

Supplement of Atmos. Meas. Tech., 10, 1495–1509, 2017
<http://www.atmos-meas-tech.net/10/1495/2017/>
doi:10.5194/amt-10-1495-2017-supplement
© Author(s) 2017. CC Attribution 3.0 License.



Supplement of

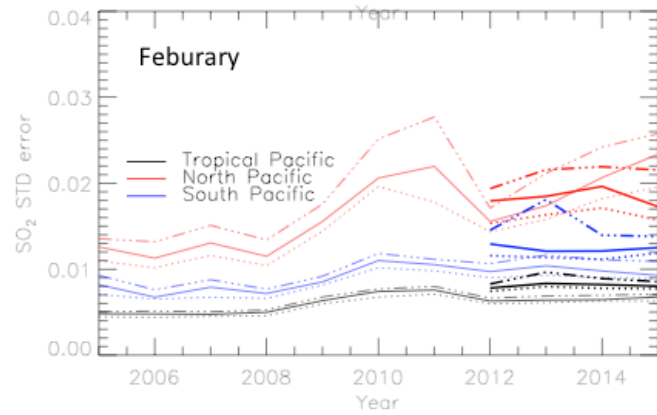
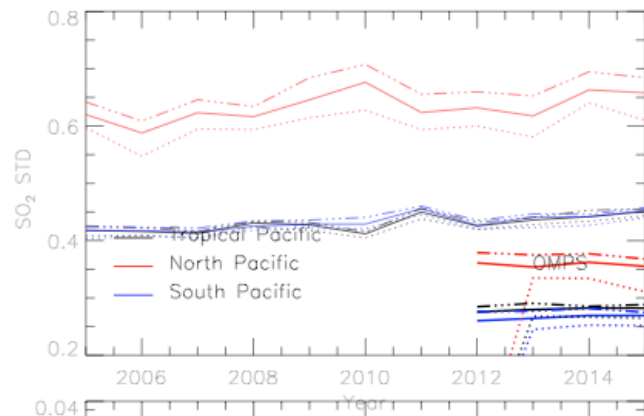
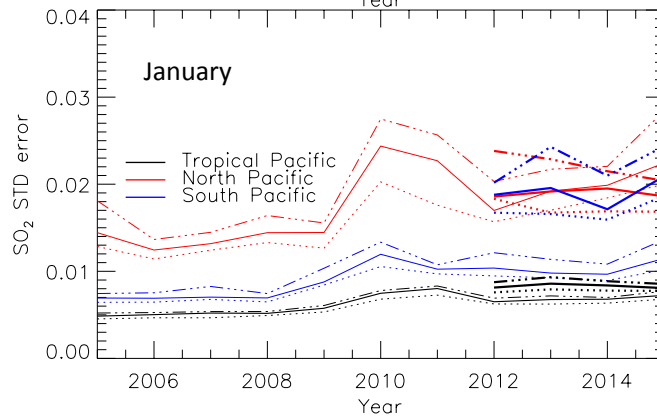
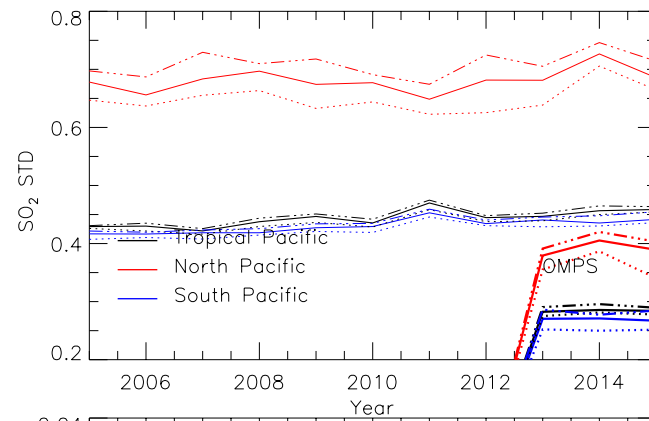
Continuation of long-term global SO₂ pollution monitoring from OMI to OMPS

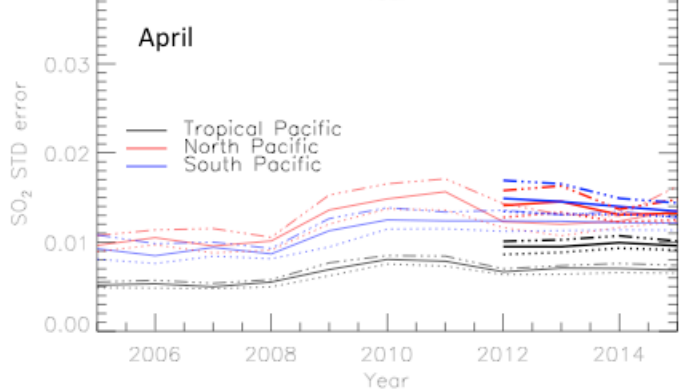
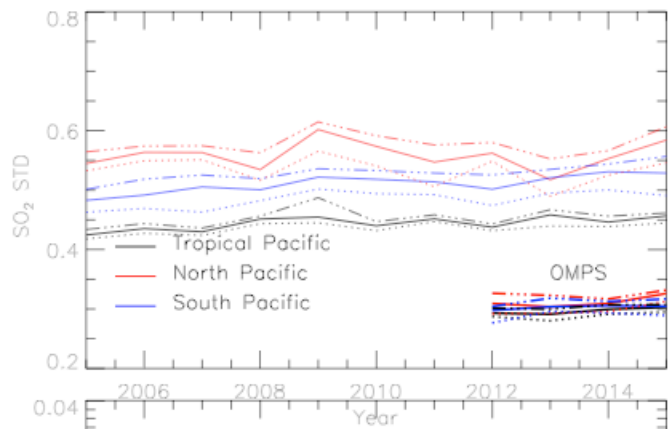
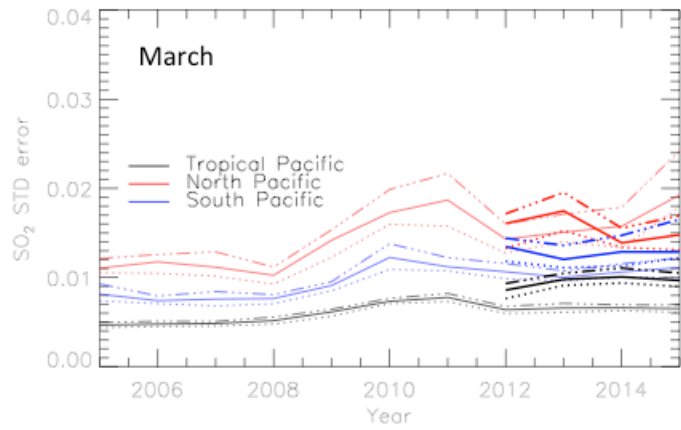
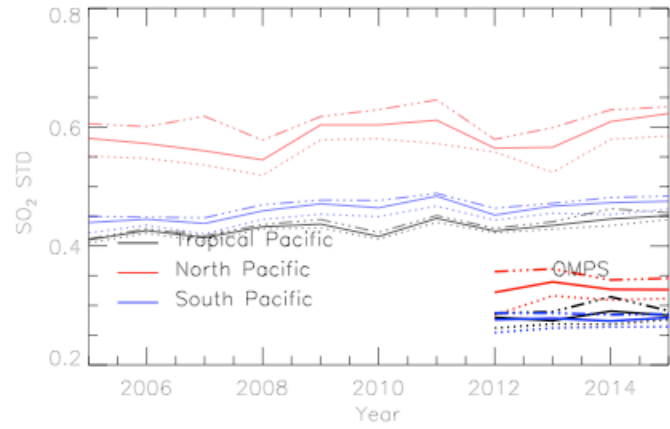
Yan Zhang et al.

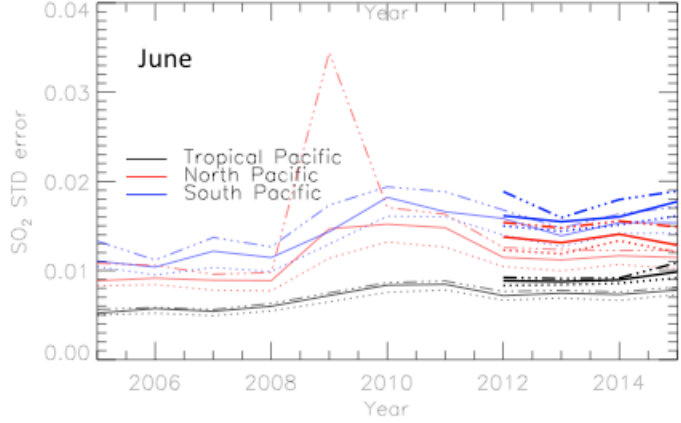
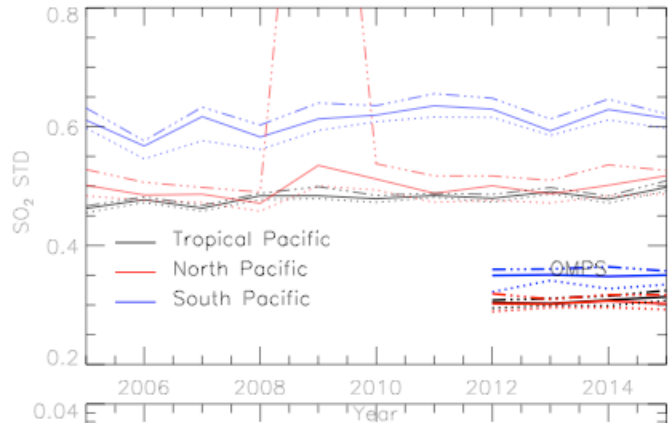
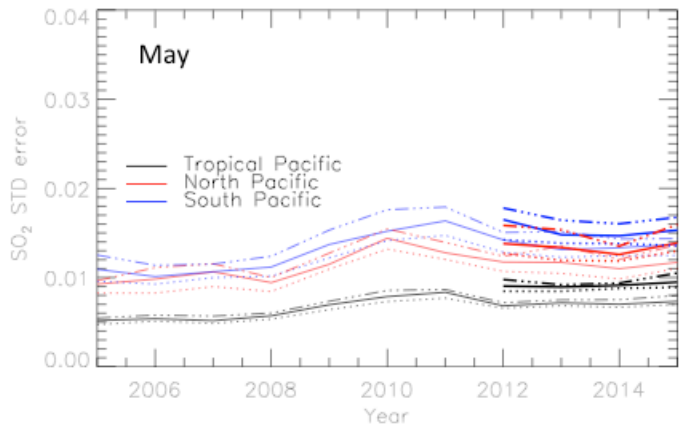
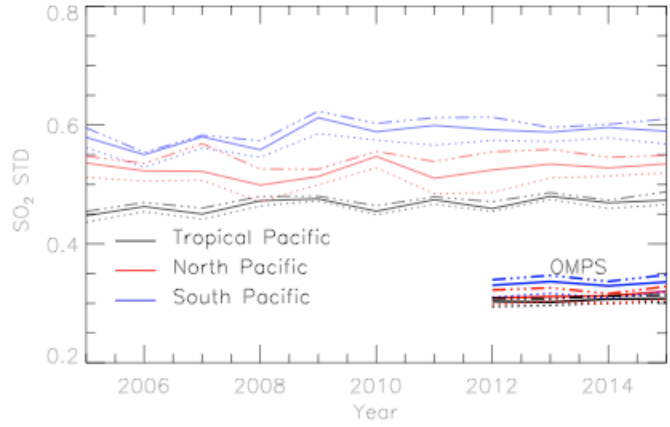
Correspondence to: Yan Zhang (yan.zhang@nasa.gov)

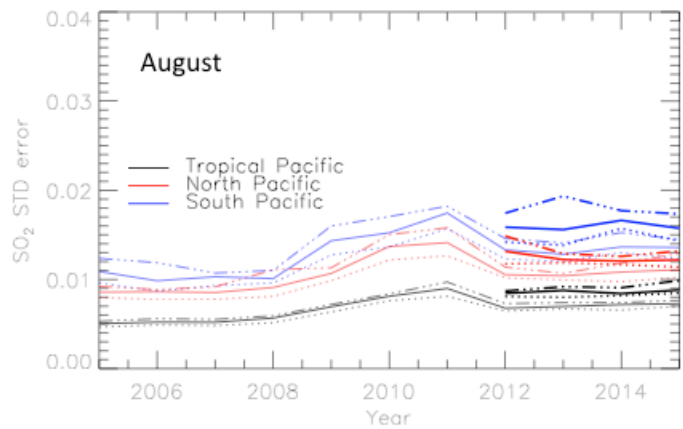
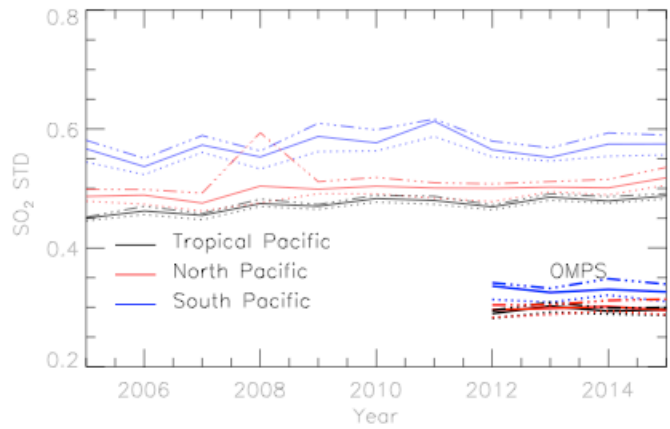
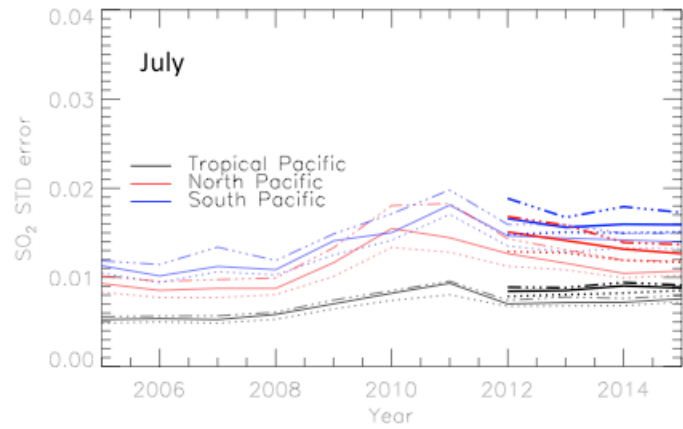
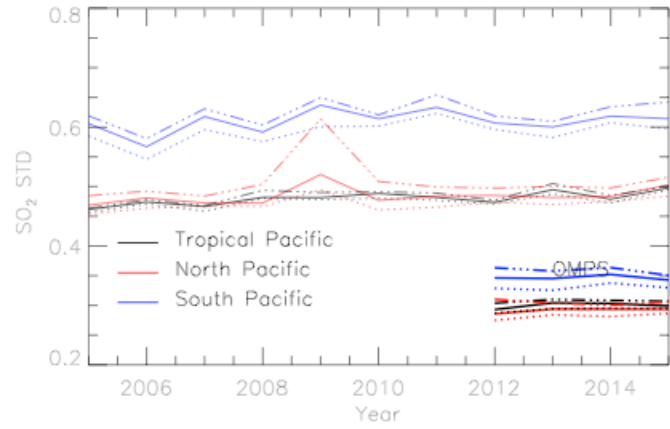
The copyright of individual parts of the supplement might differ from the CC-BY 3.0 licence.

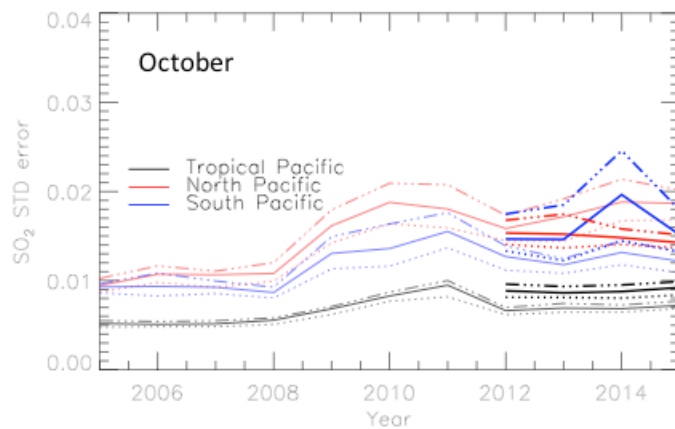
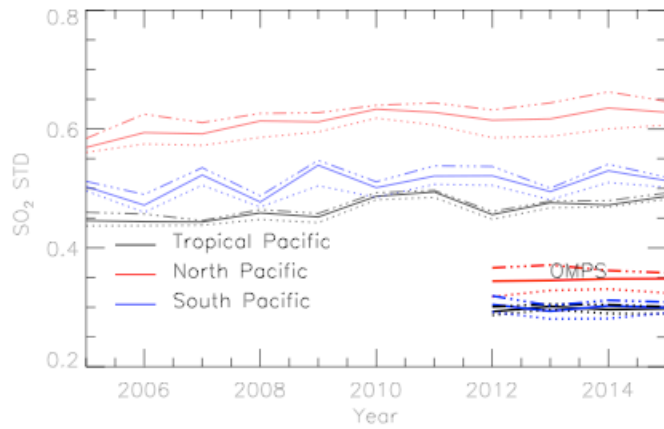
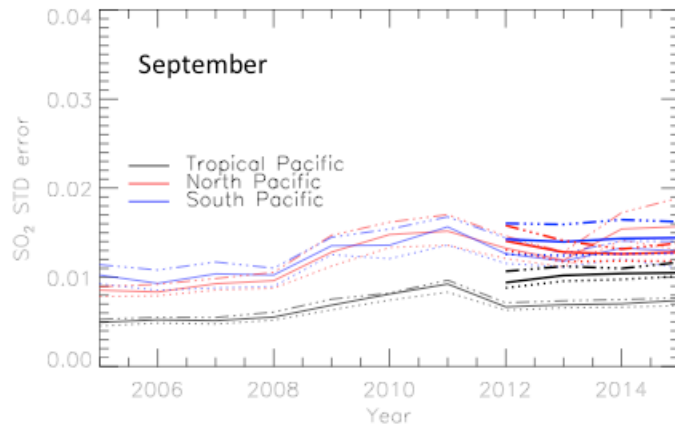
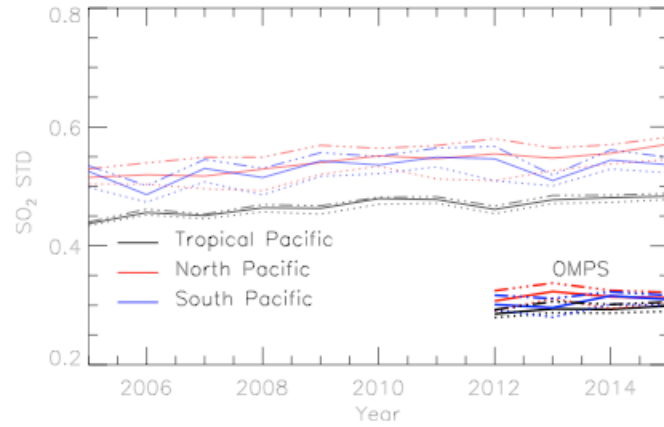
Supplemental Information











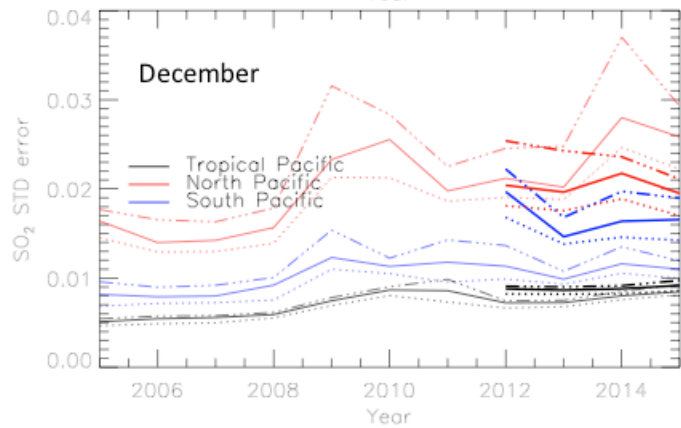
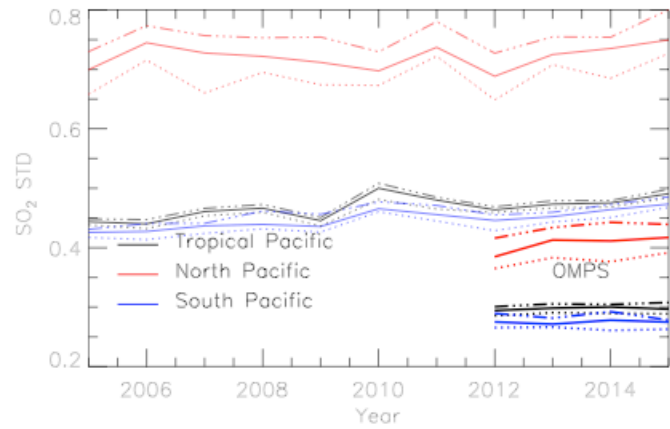
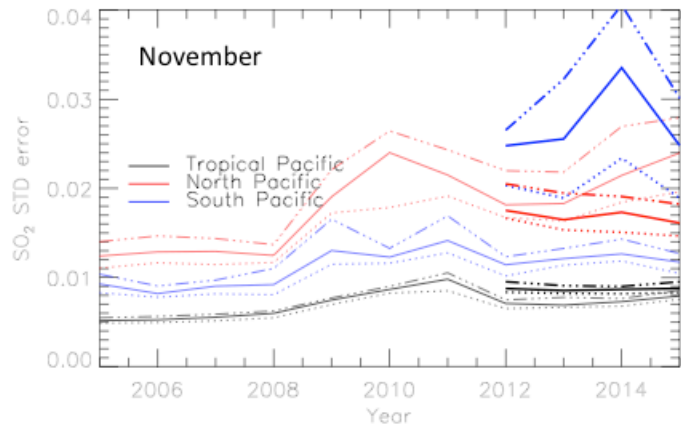
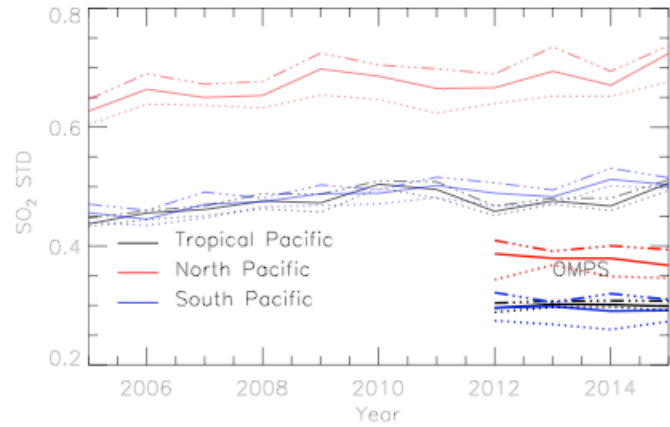


Figure S1. Standard deviation (STD, top) and Standard Error (STE, bottom) of SO₂ noise (DU) averaged over clean background regions in the Pacific (150°W-120°W), in the north between 30°N-42°N (Red), in tropics between 10°S-10°N (black), and in the south between 30°S-20°S (blue) in Jan.-Dec. of each year from 2005 to 2015. Solid lines are medians of daily SO₂ STD from each month, and dashed lines are 25% and 75% of daily SO₂ STD from each month, respectively. OMI data start in 2005 and OMPS data start in 2012.