



Supplement of

An aircraft gas chromatograph–mass spectrometer System for Organic Fast Identification Analysis (SOFIA): design, performance and a case study of Asian monsoon pollution outflow

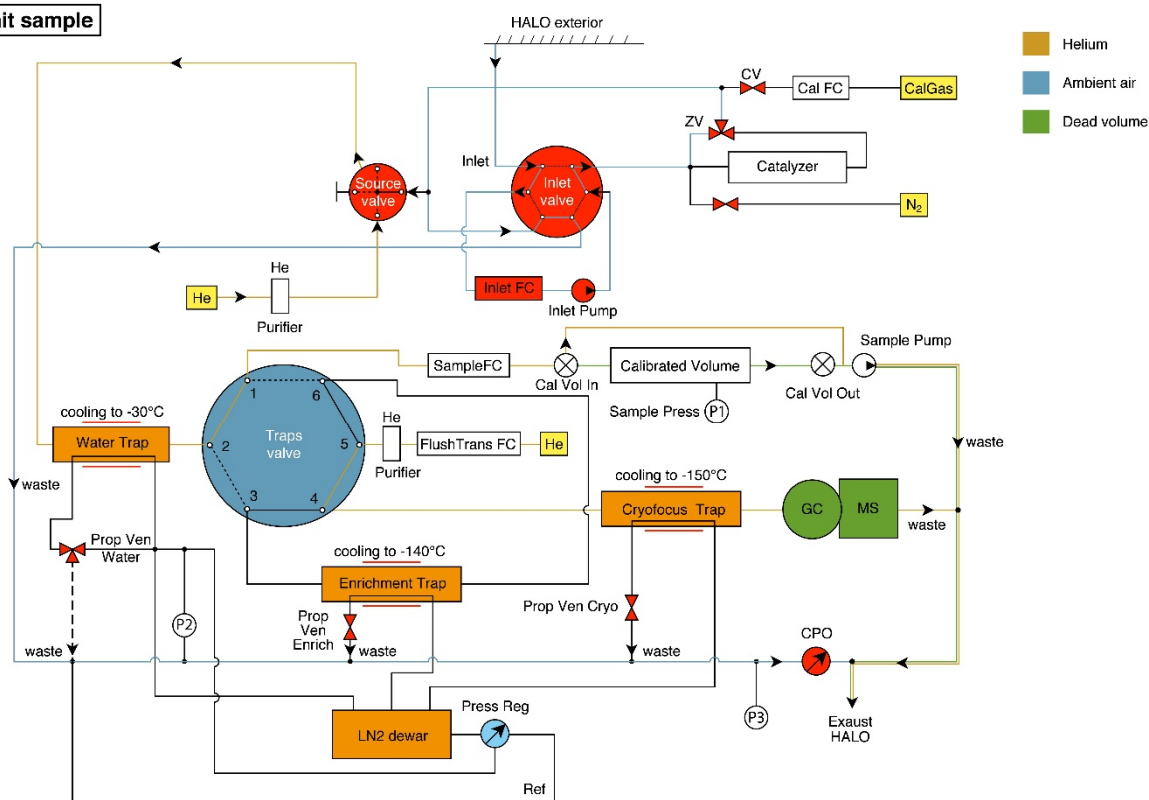
Efstratios Bourtsoukidis et al.

Correspondence to: Efstratios Bourtsoukidis (e.bourtsoukidis@mpic.de)

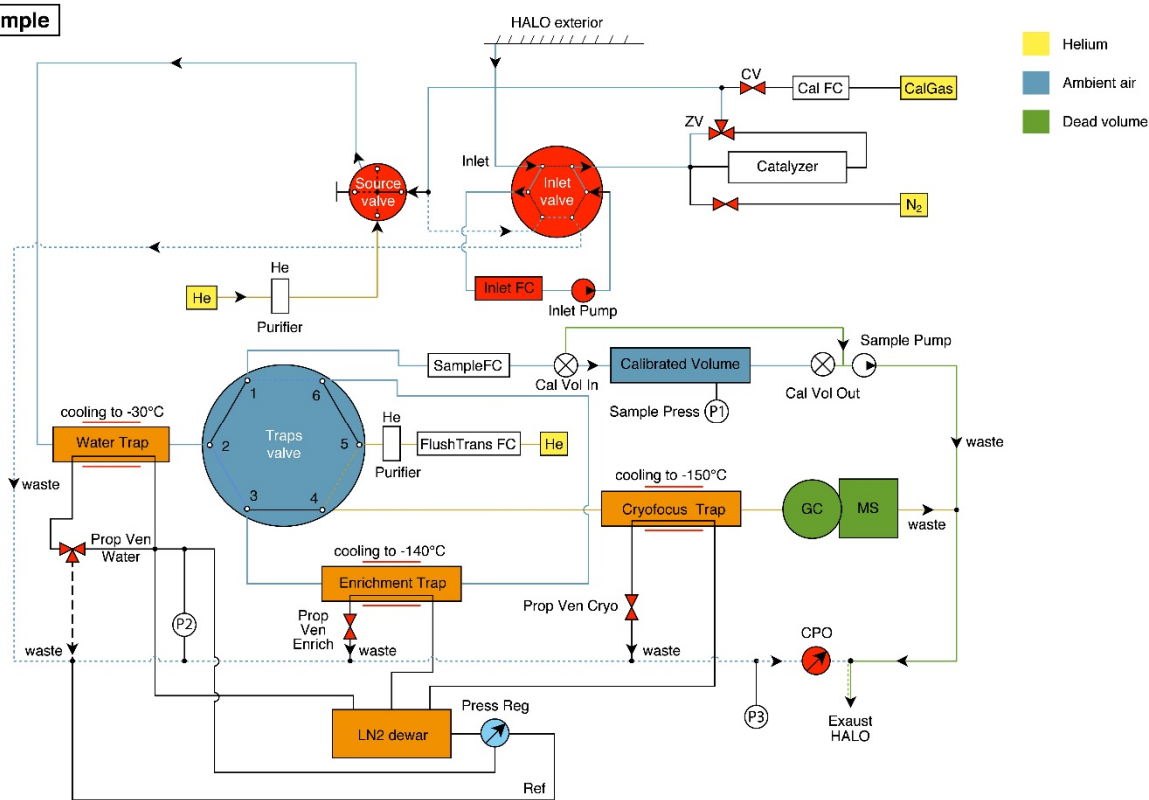
The copyright of individual parts of the supplement might differ from the CC BY 4.0 License.

Supplementary information

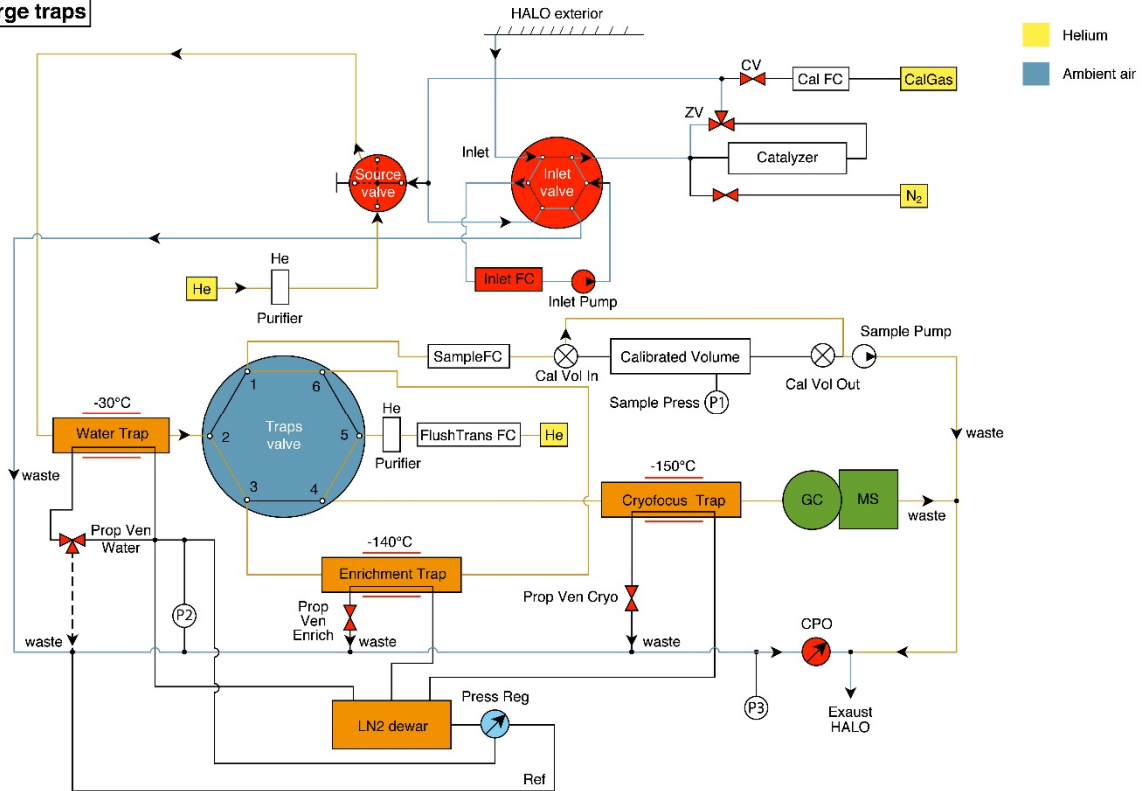
Wait sample



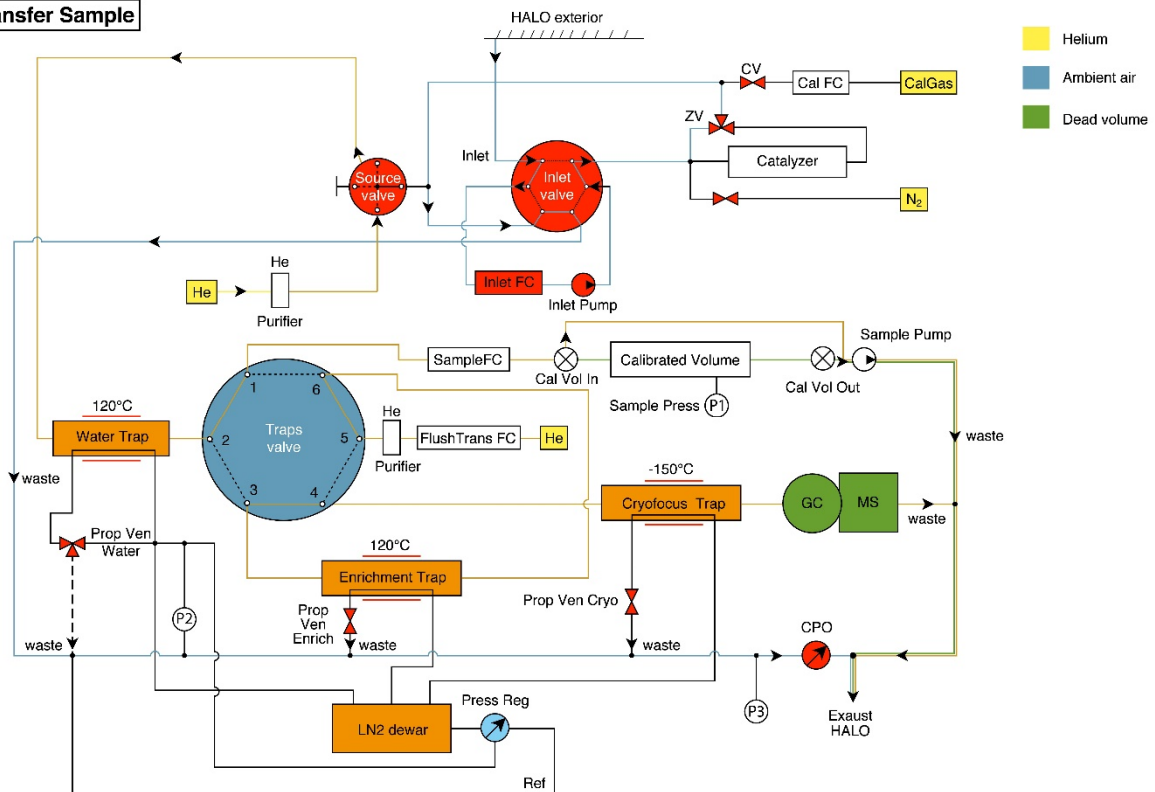
Sample



Purge traps



Transfer Sample



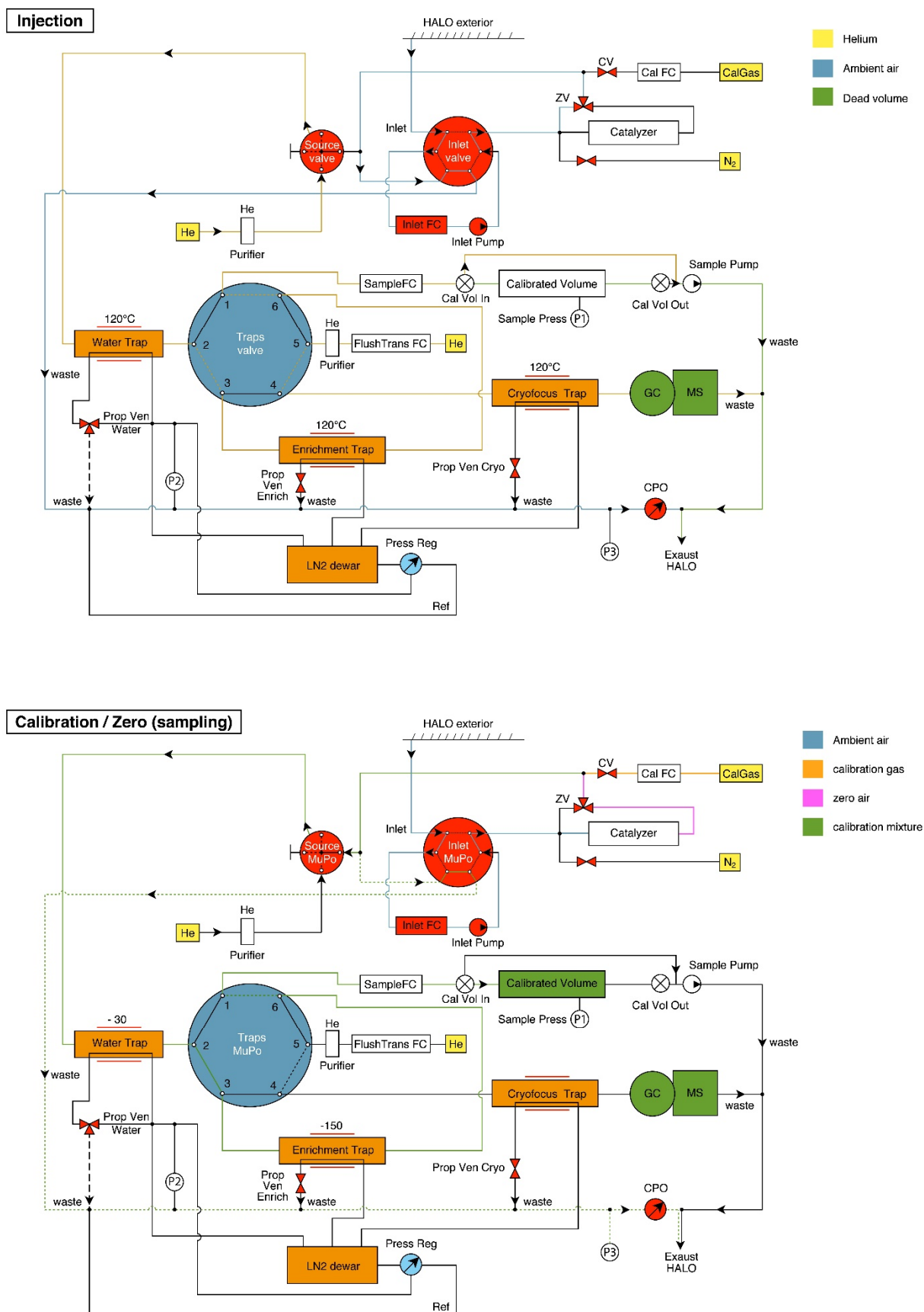


Figure S1. Diagrams of SOFIA illustrating the air flow paths during a complete cycle.

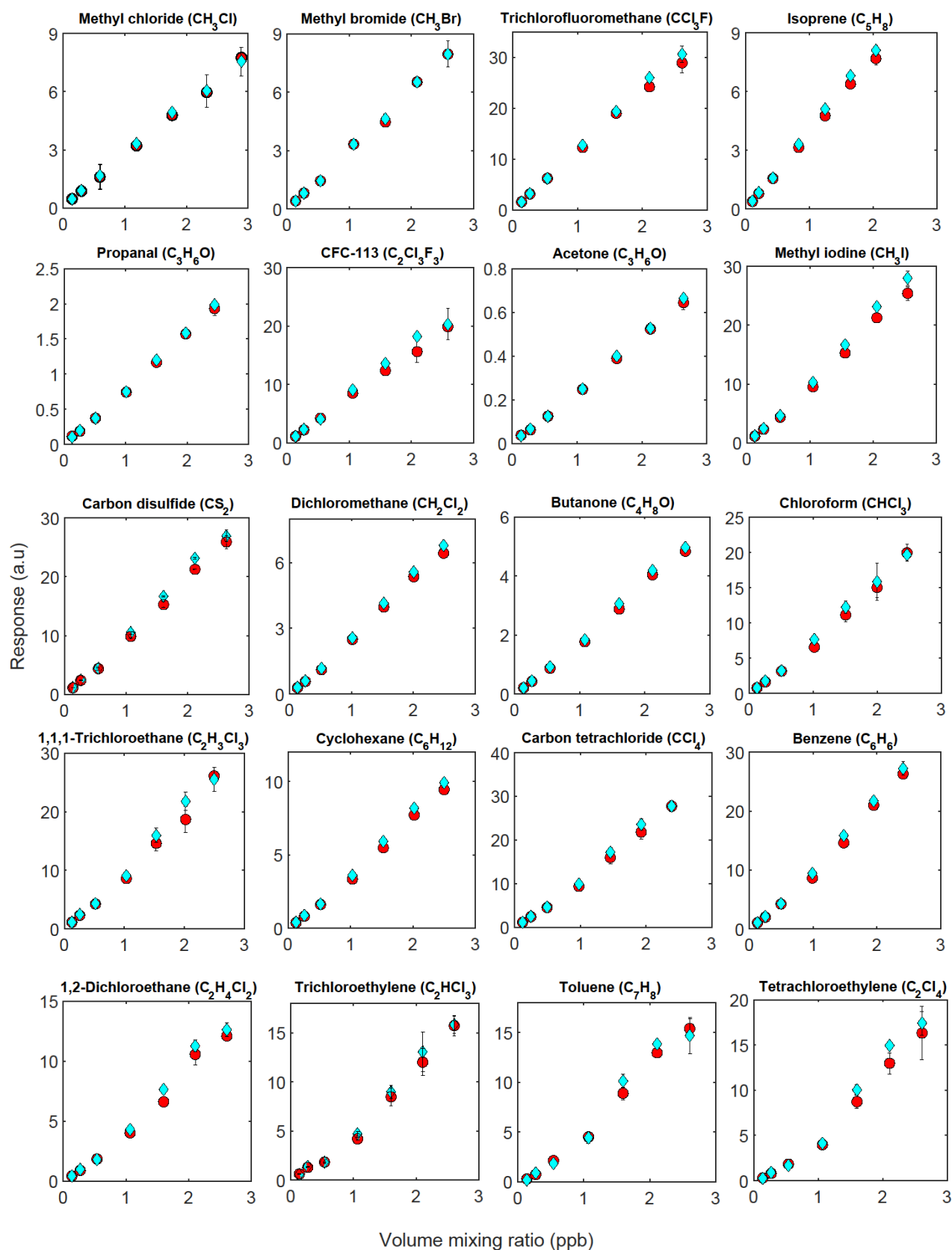


Figure S2. Calibration curves under dry (red circles) and wet (cyan diamonds) conditions. Each data point consists of 5 measurements and the standard deviation is indicated by the errorbars.

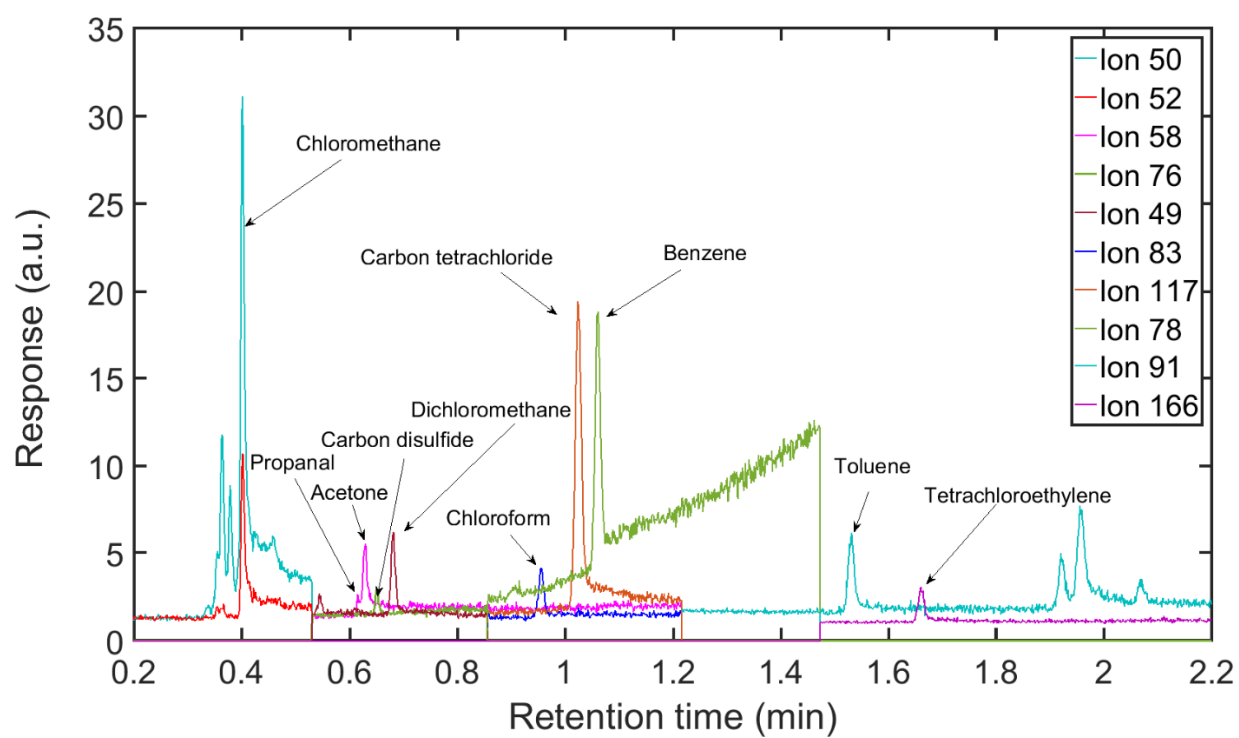


Figure S3. Ambient chromatogram obtained during OMO campaign.