

Supplement of Atmos. Meas. Tech., 11, 3661–3687, 2018
<https://doi.org/10.5194/amt-11-3661-2018-supplement>
© Author(s) 2018. This work is distributed under
the Creative Commons Attribution 4.0 License.



Supplement of

Homogenizing and estimating the uncertainty in NOAA's long-term vertical ozone profile records measured with the electrochemical concentration cell ozonesonde

Chance W. Sterling et al.

Correspondence to: Chance W. Sterling (chance.sterling@noaa.gov)

The copyright of individual parts of the supplement might differ from the CC BY 4.0 License.

Supplemental Material

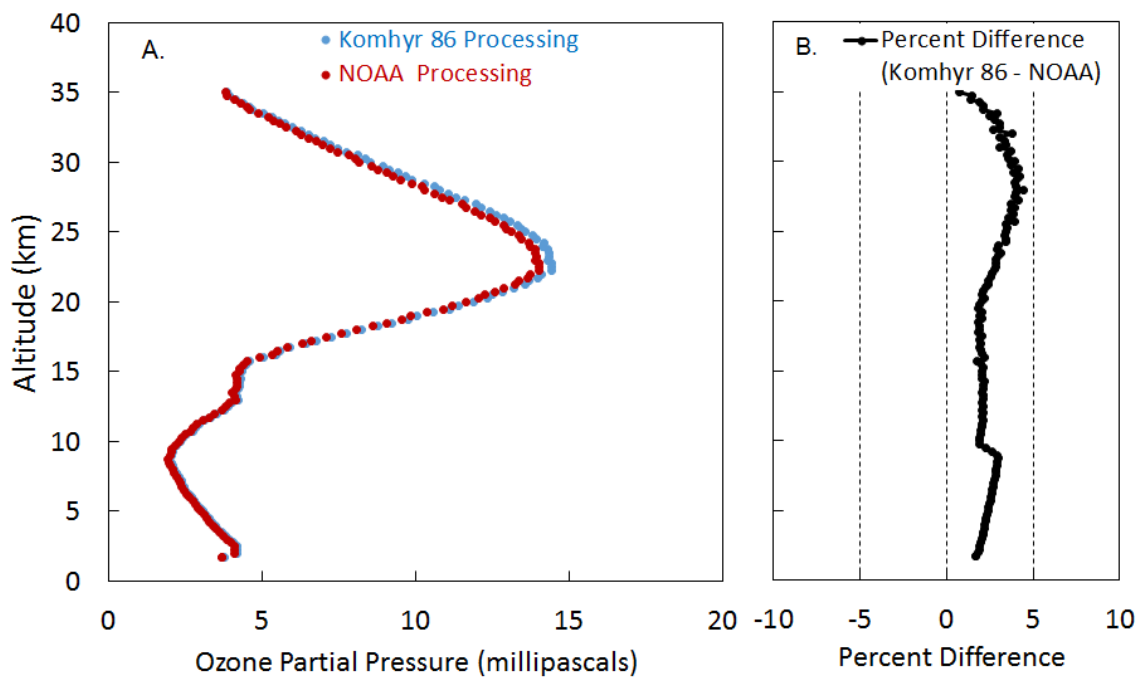


Figure S1: Average Boulder profile for Era 3 processed with the 1986 Komhyr processing and the NOAA ozone sensor efficiency processing techniques, Panel A. The percent difference in the two processing is shown in Panel B.

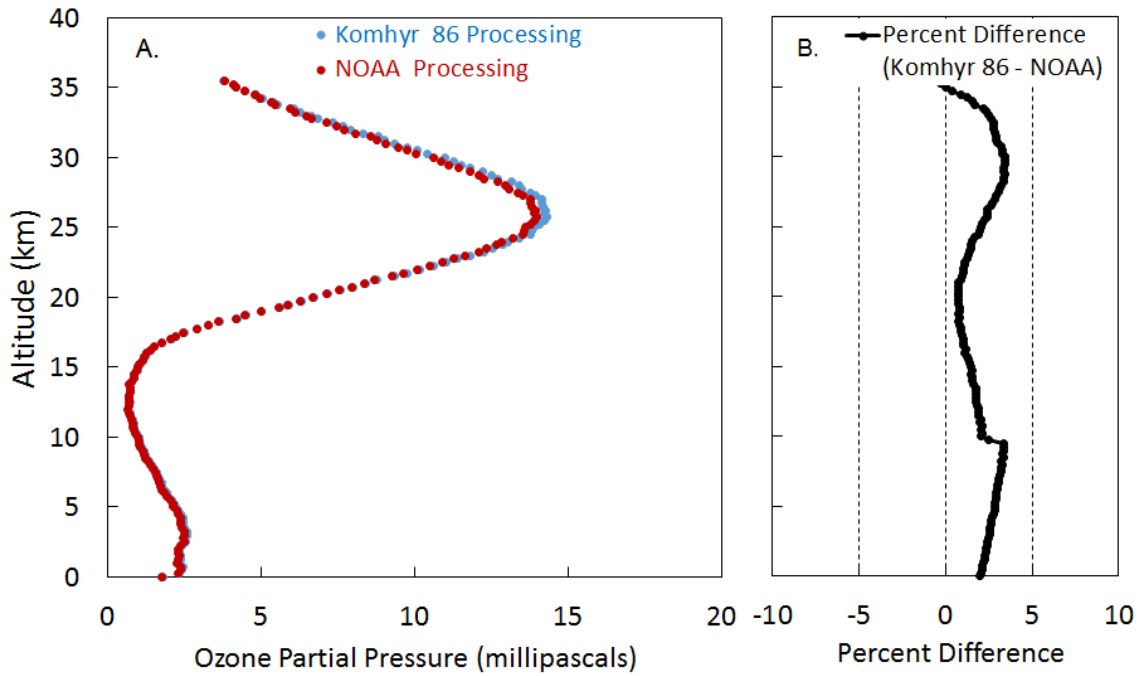


Figure S2: Average Hilo profile for Era 3 processed with the 1986 Komhyr correction and the NOAA ozone sensor efficiency correction, Panel A. The percent difference in the two processing is shown in Panel B.

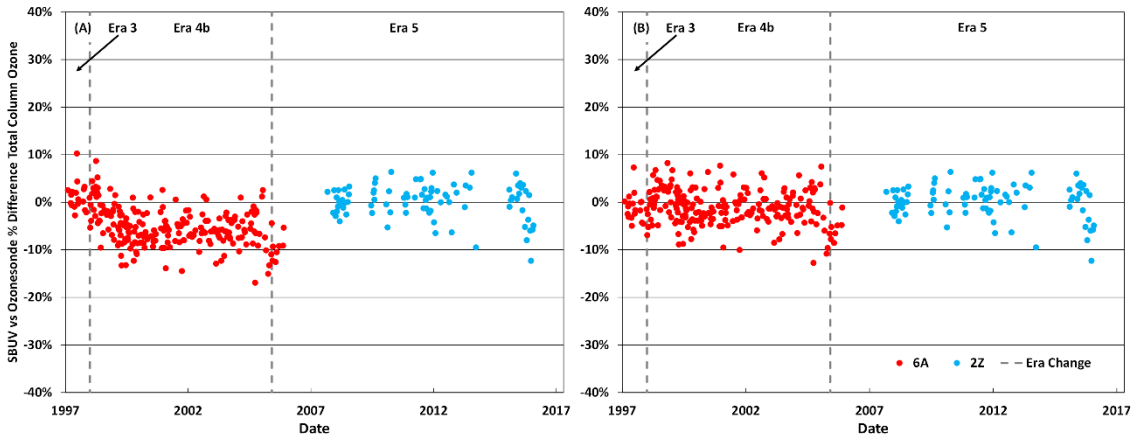


Figure S3: Suva, Fiji SBUV vs Ozone sonde total column ozone comparison before (A) and after (B) applying ozone sensor efficiency.

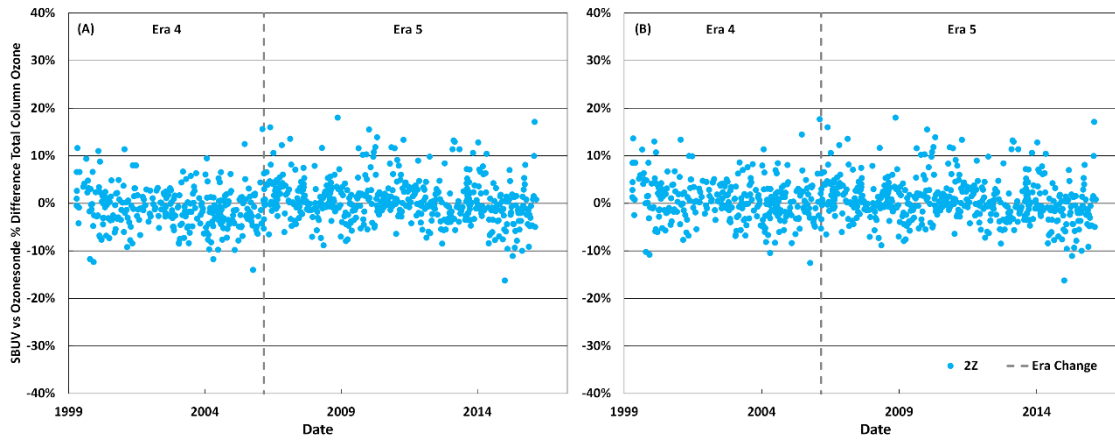
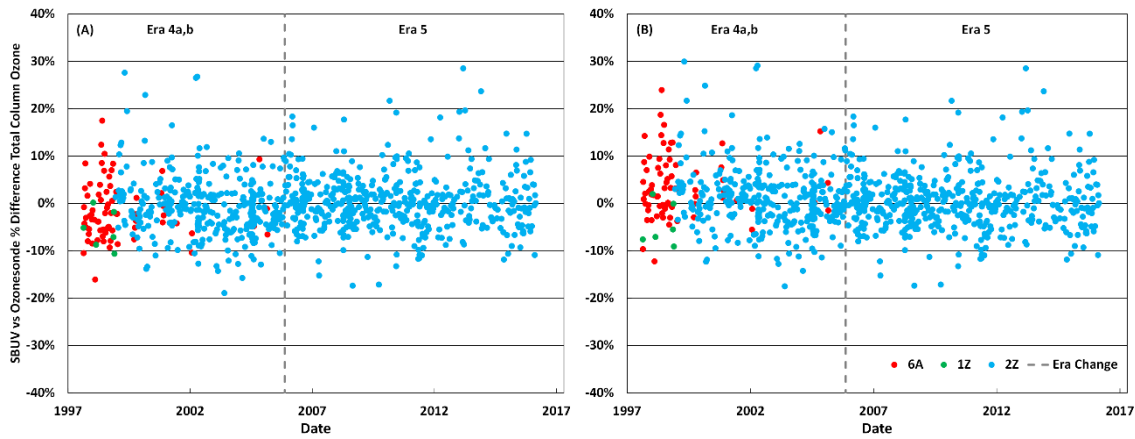


Figure S4: Huntsville, Alabama SBUV vs Ozonesonde total column ozone comparison before (A) and after (B) applying the ozone sensor efficiency.



5

Figure S5: Trinidad Head, California SBUV vs Ozonesonde total column ozone comparison before (A) and after (B) applying the ozone sensor efficiency.

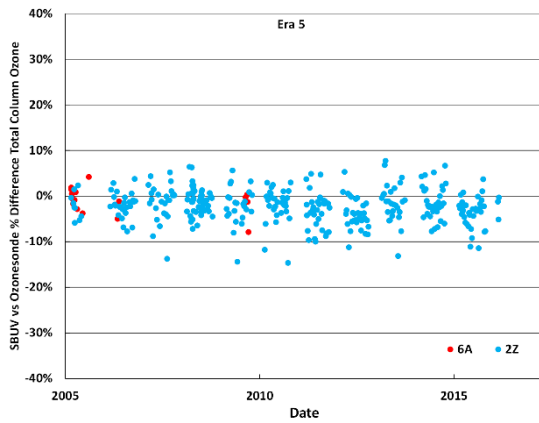


Figure S6: Summit, Greenland SBUV vs Ozonesonde total column ozone comparison after applying ozone sensor efficiency.

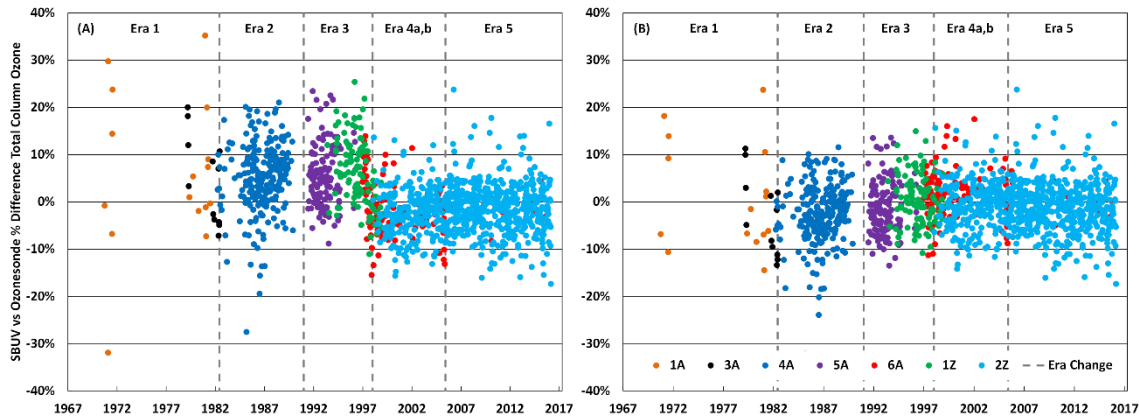
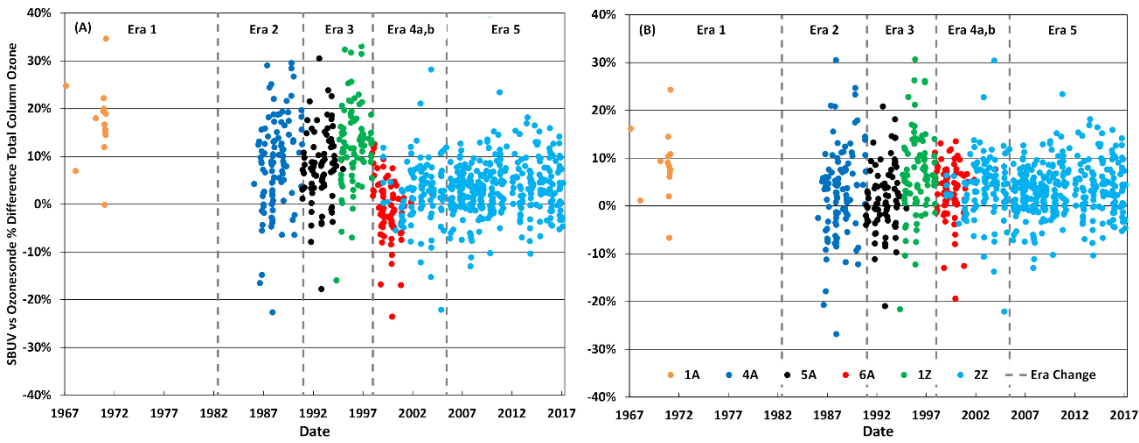
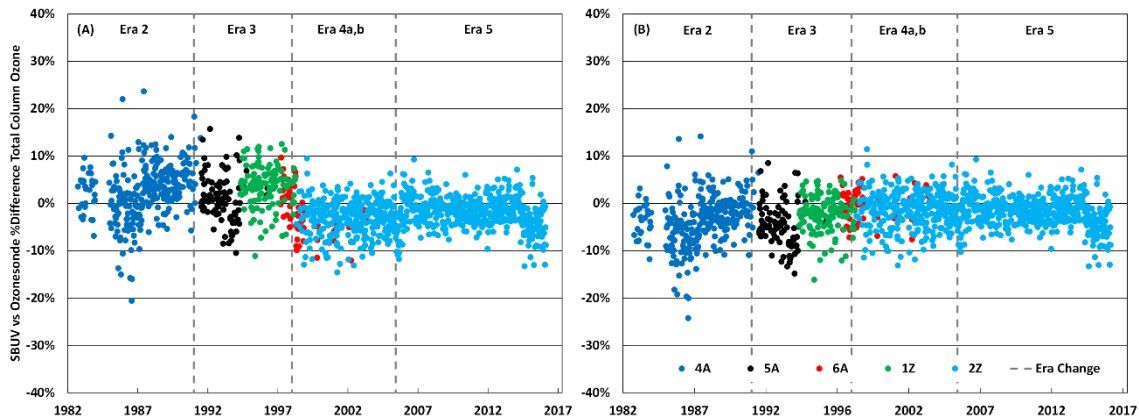


Figure S7: Boulder, CO SBUV vs Ozonesonde total column ozone comparison before (A) and after (B) applying ozone sensor efficiency.



5

Figure S8: South Pole Dobson vs Ozonesonde total column ozone comparison before (A) and after (B) applying ozone sensor efficiency.



4

Figure S9: Hilo, HI SBUV vs Ozoneonde total column ozone comparison before (A) and after (B) applying ozone sensor efficiency.

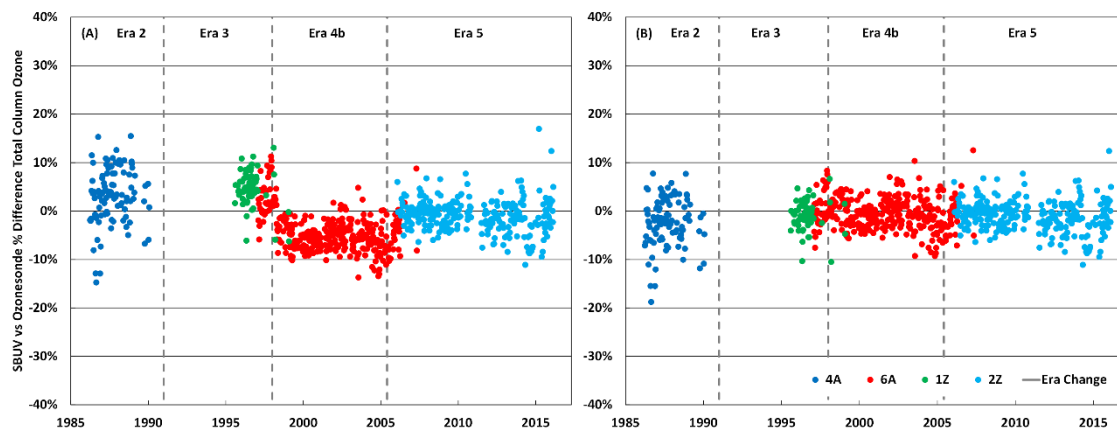


Figure S10: Pago Pago, American Samoa SBUV vs Ozoneonde total column ozone comparison before (A) and after (B) applying ozone sensor efficiency.