

Supplement of Atmos. Meas. Tech., 11, 3737–3757, 2018  
<https://doi.org/10.5194/amt-11-3737-2018-supplement>  
© Author(s) 2018. This work is distributed under  
the Creative Commons Attribution 4.0 License.



*Supplement of*

## **The IAGOS NO<sub>x</sub> instrument – design, operation and first results from deployment aboard passenger aircraft**

**Florian Berkes et al.**

*Correspondence to:* Florian Berkes (f.berkes@fz-juelich.de) and Andreas Petzold (a.petzold@fz-juelich.de)

The copyright of individual parts of the supplement might differ from the CC BY 4.0 License.

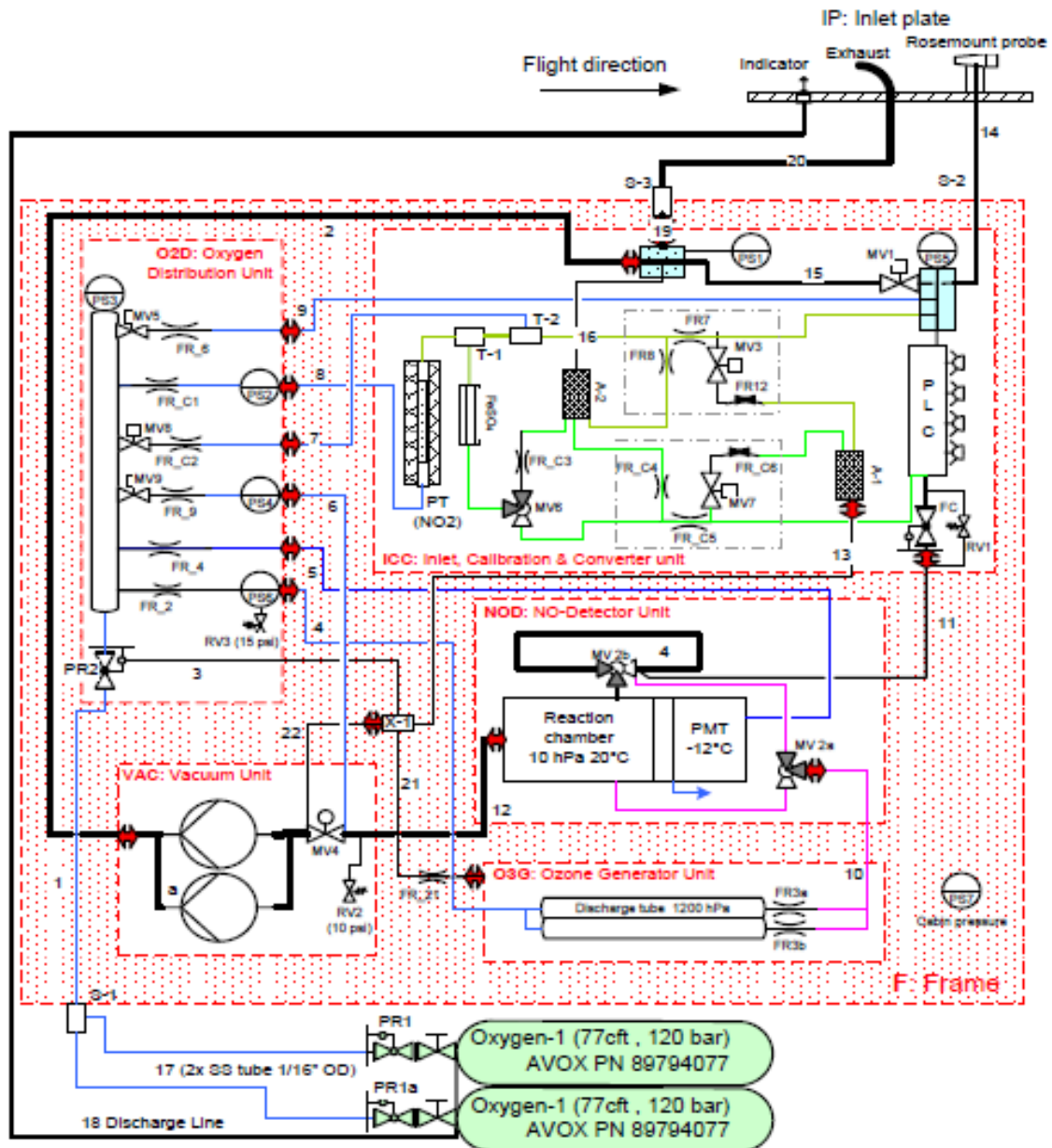
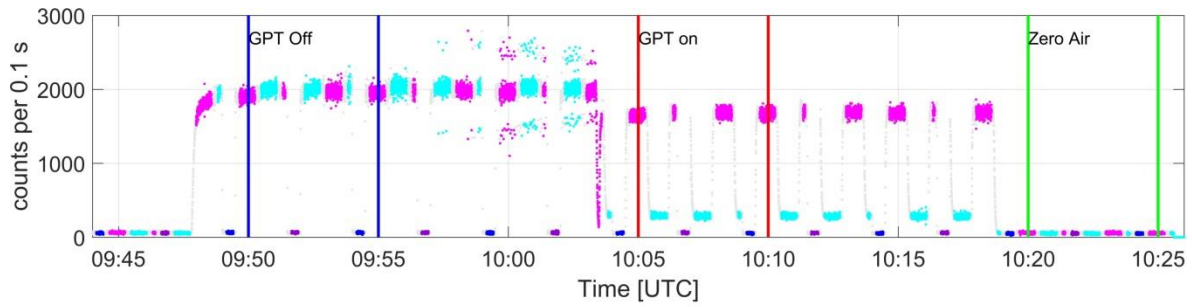


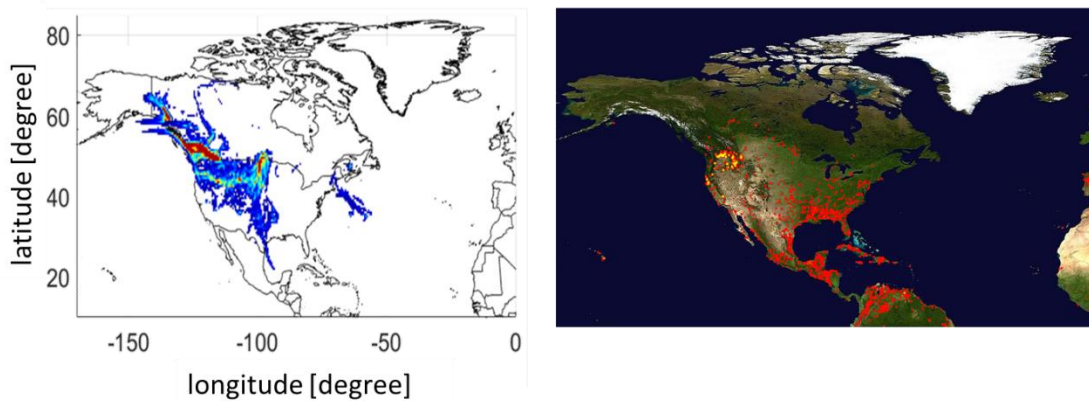
Figure S1: Detailed pneumatic diagram of the IAGOS NO<sub>x</sub> instrument (Revision 1), showing all pneumatic connections. A details description is available in the SOP (<https://www.iagos.org/iagos-core-instruments/package2b/>).



Date:20160928_092431	Netto	MessMode	ZeroMode
File name:B201_20160928_092431	NO: Offset (ZeroAir)	0	500
External data:	NO: GPT off	19400	20030
NO Referenz:15.5 ppbv	NO: GPT on	2385	2910
$S_{NOD}$ :1.2516 cps/pptv	NOc: Offset (ZeroAir)	40	560
$E_{PLC}$ :83.5%	NOc: GPT off	18860	19500
Titration:87.7 %	NOc: GPT on	16155	16765

5 **Figure S2: Determination of instrument characteristics during an external GPT in the laboratory. GPT off: only NO is flushed through the instrument. GPT on: mixture of NO and NO<sub>2</sub>. Zero-Air: NO and NO<sub>2</sub> free gas. For each interval at least 5 minutes of measurements are taken. Measure modes are shown for NO<sub>c</sub> (pink) and for NO (light blue); the zero modes are shown for NO<sub>c</sub> (purple) and for NO (dark blue).**

10



15 **Figure S3: Left: Possible contribution of surface air masses based on 4 days backward simulations using the FLEXPART model on the Plume observed at cruise altitude shown in Fig 12. FLEXPART was driven by meteorological analysis data of 1° degrees in longitude and latitude with 60 hybrid-pressure levels in the vertical from ERA-Interim. Tracers are inert, non-interacting particles and released for one hour when the first plume was observed (23 UTC). FLEXPART model output is given as the potential emission sensitivity (PES) of the particles over a particular region every hour. For this analysis the PES was time-intergrated over the analyzed period from the surface up to 500 m. Right: Fire detection map at this time period from <https://lance.modaps.eosdis.nasa.gov/cgi-bin/imagery/firemaps.cgi>.**

20

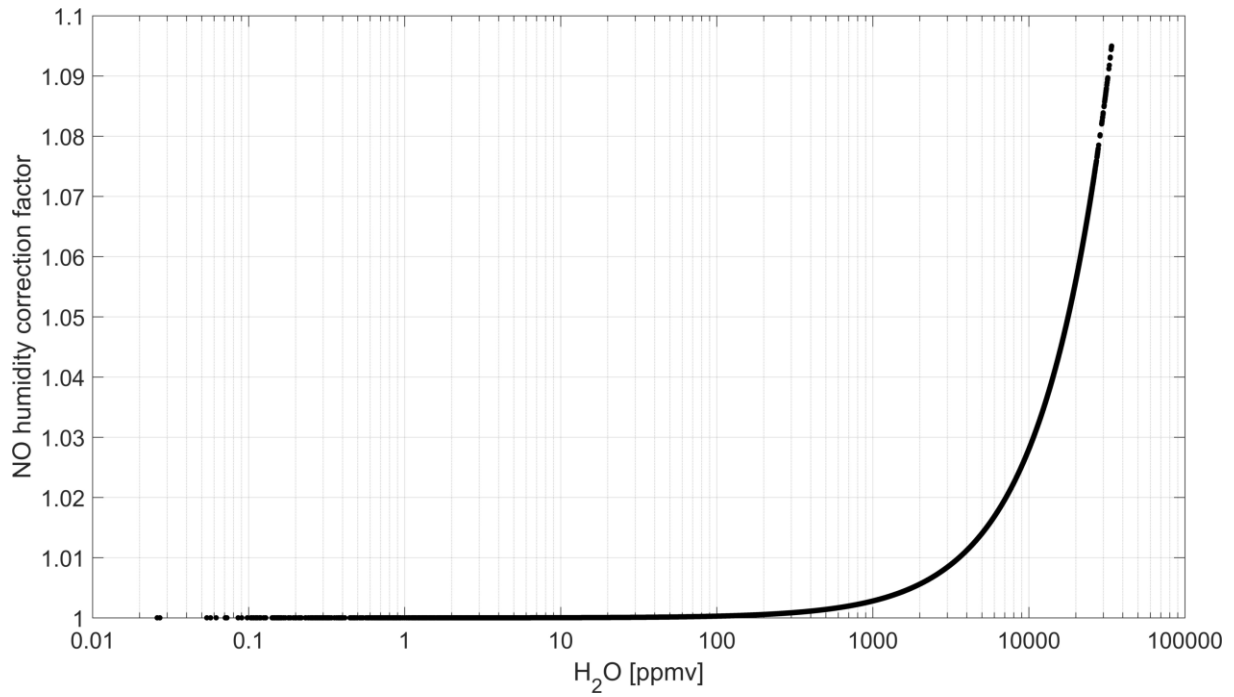
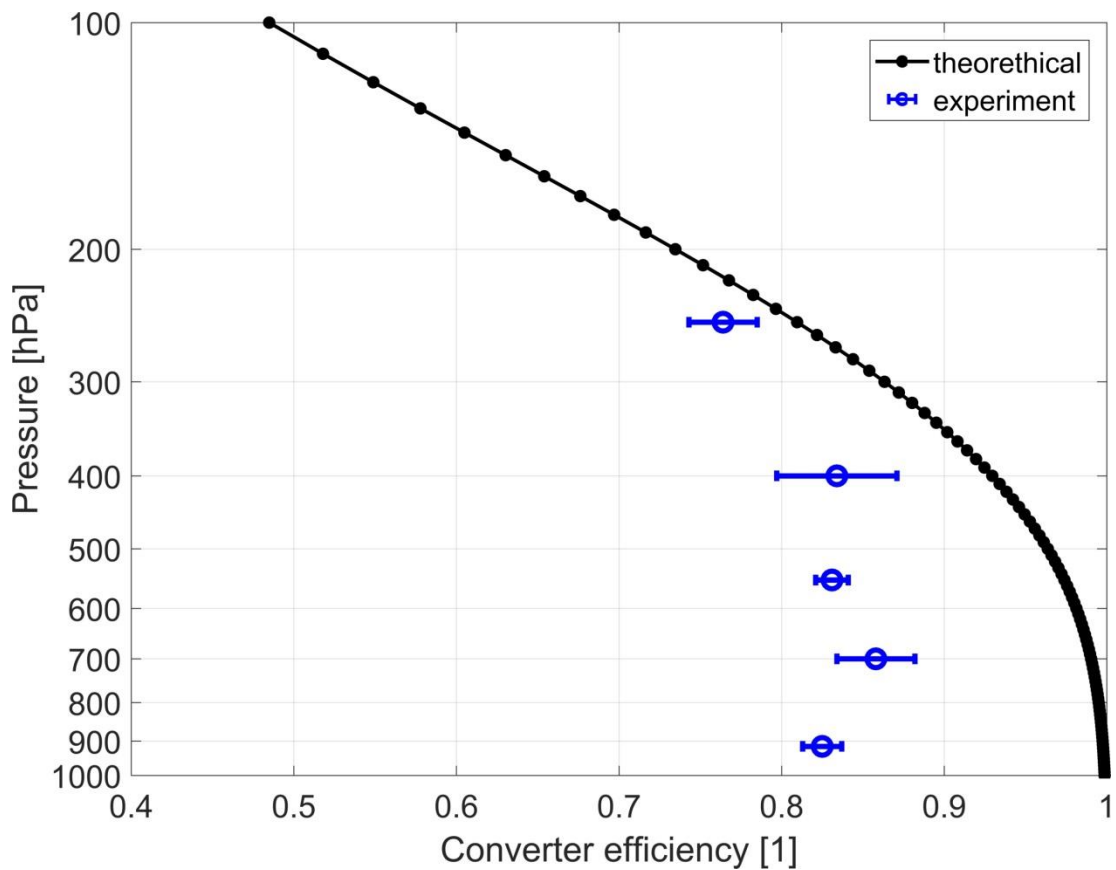


Figure S4: NO water correction factor depending on the ambient water vapor mixing ratio.



5 Figure S5: Experimental and theoretical converter efficiency determined for a pressure range between 180 and 1000 hPa. The residence time  $\tau$  increases with higher pressure inside the PLC and leads to an increase of the converter efficiency. For each individual instrument is the function  $\tau(p)$  determined.