

Supplement of Atmos. Meas. Tech., 12, 2665–2677, 2019  
<https://doi.org/10.5194/amt-12-2665-2019-supplement>  
© Author(s) 2019. This work is distributed under  
the Creative Commons Attribution 4.0 License.



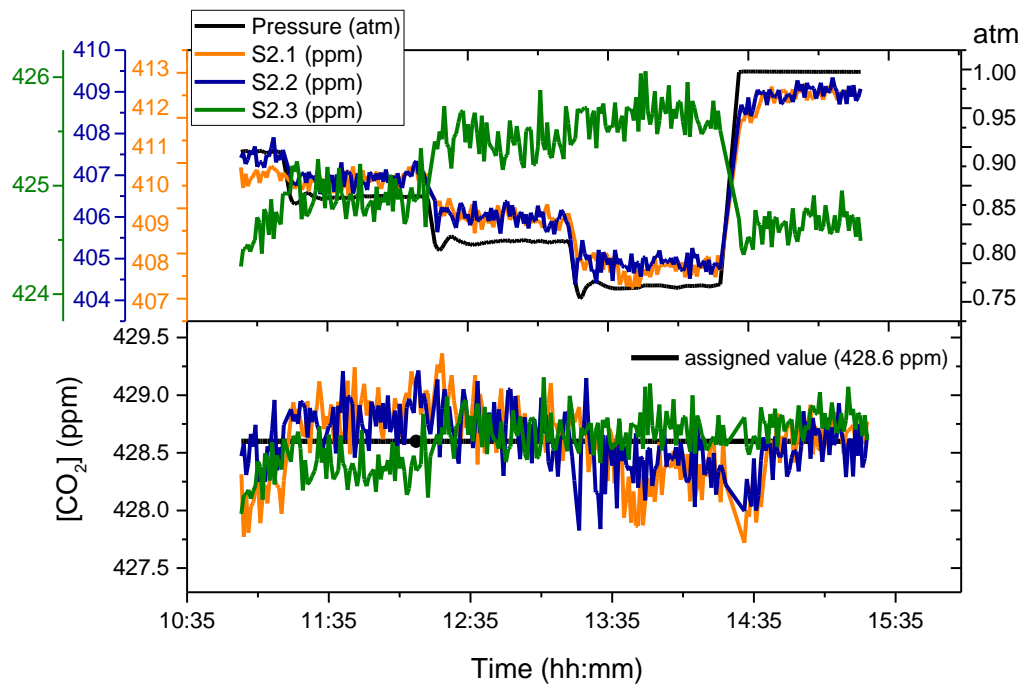
*Supplement of*

## **Characterization of a commercial lower-cost medium-precision non-dispersive infrared sensor for atmospheric CO<sub>2</sub> monitoring in urban areas**

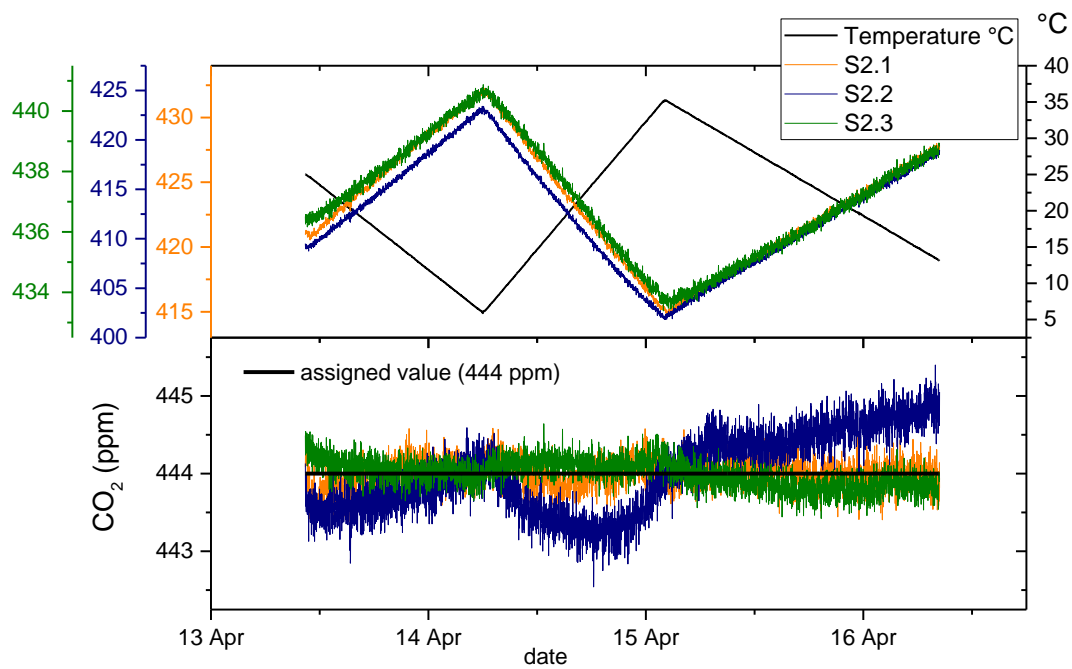
**Emmanuel Arzoumanian et al.**

*Correspondence to:* Felix R. Vogel ([felix.vogel@canada.ca](mailto:felix.vogel@canada.ca)) and Philippe Ciais ([philippe.ciais@lsce.ipsl.fr](mailto:philippe.ciais@lsce.ipsl.fr))

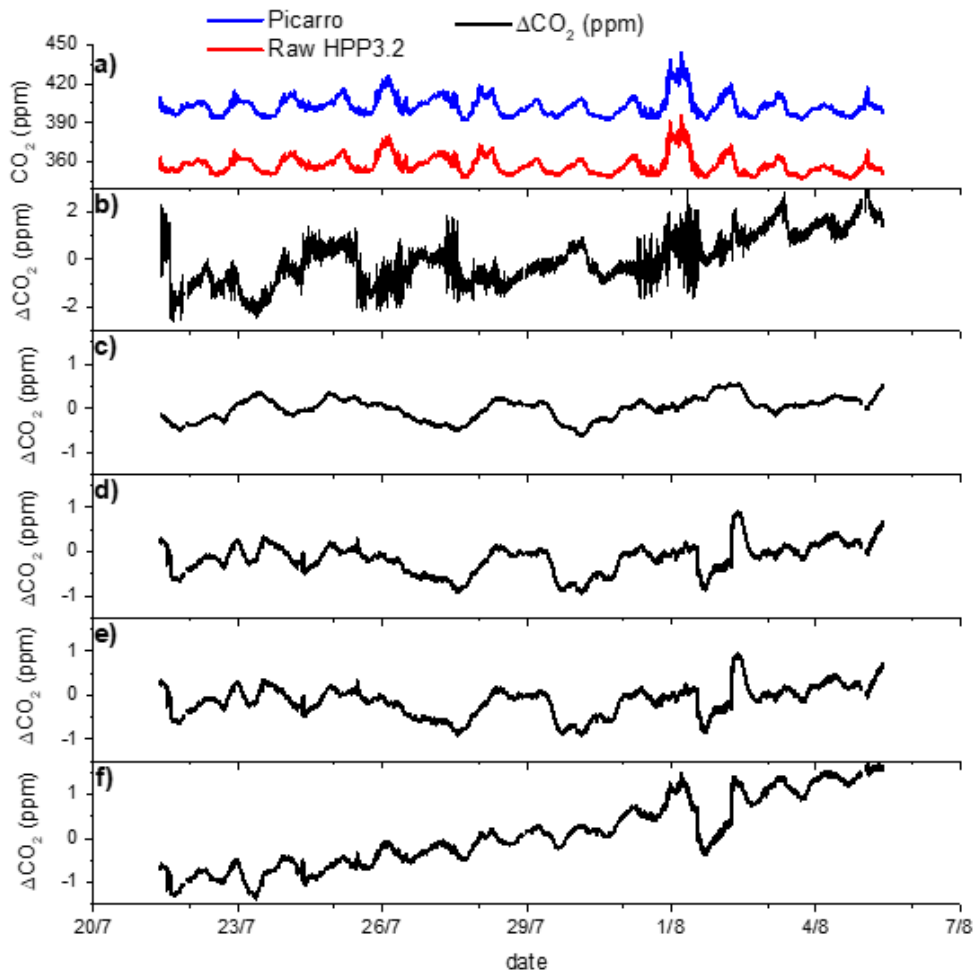
The copyright of individual parts of the supplement might differ from the CC BY 4.0 License.



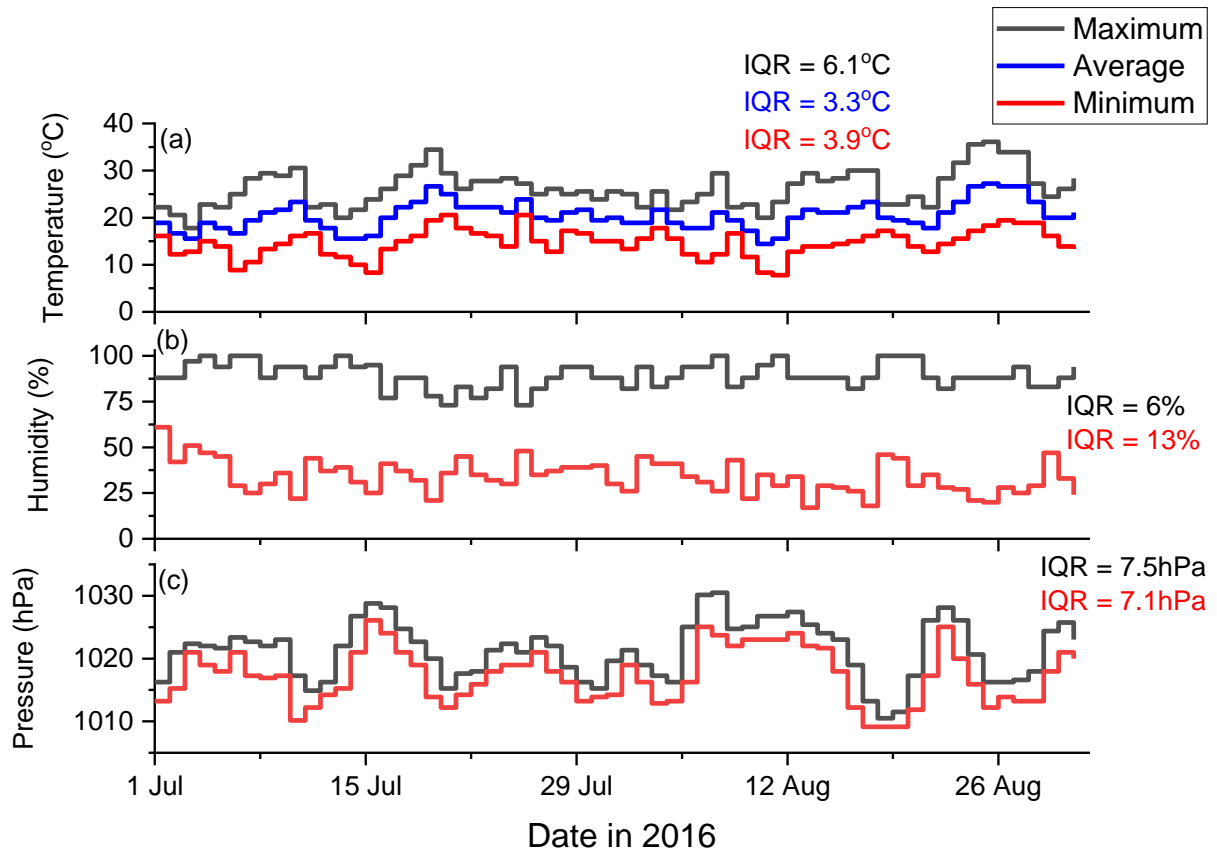
**Figure S1:** Upper panel – Effect of pressure variations (black) on reported  $\{CO_2\}$  (assigned value =428.6 ppm), S2.1 (orange), S2.2 (blue) and S2.3 (green), please note the different y-axis scales. Lower panel – Corrected  $\{CO_2\}$ .



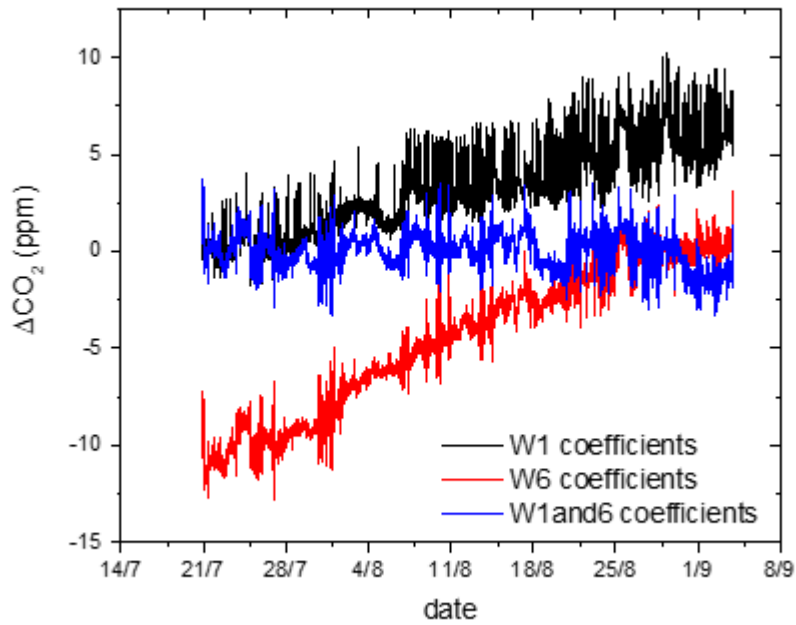
**Figure S2:** Upper panel – The effect of temperature variations (black) on raw CO<sub>2</sub> dry air mole fractions of HPP3.2 instruments measuring CO<sub>2</sub> from air from the same calibration cylinder (true value =444 ppm), S2.1 (orange), S2.2 (blue) and S2.3 (green), please note the different y-axis scales. Lower panel – Corrected CO<sub>2</sub> dry air mole fractions for HPP3.2 instruments.



**Figure S3:** A continuous time series of 1 min averages for HPP3.2 instrument S2.2 compared to the Picarro CRDS instrument after correcting for the different variables for a period of 15 days. Plot (a) shows reported  $\{CO_2\}$  measured by S2.2 and the Picarro. Plot (b) shows the difference between Picarro and S2.2 after offset correction. The next 4 plots (c), (d), (e), (f) show the difference to plot (b) after having correcting the HPP3.2  $\{CO_2\}$  to fit the Picarro  $CO_2$  using pressure, temperature, water vapor, and linear drift respectively.



**Figure S4:** Meteorological conditions in Paris during the Jussieu and Saclay field site tests. Daily minima, average and maxima of temperature (a), relative humidity (b) and pressure (c) are calculated from hourly observations. Interquartile ranges for all variables are also reported.



**Figure S5:**  $\Delta\text{CO}_2$  ( $\{\Delta\text{CO}_2\}_{\text{HPP3}} - \{\Delta\text{CO}_2\}_{\text{CRDS}}$ ) of HPP3.2 instrument S2.2 during 45 days considering different calibration periods of one week. Results from calibration periods of week one (W1) and week six (W6) are in black and red respectively. The blue curve shows corrected  $\Delta\{\text{CO}_2\}$  when both W1 and W6 are used in the calibration.