

Supplement of Atmos. Meas. Tech., 12, 6695–6719, 2019
<https://doi.org/10.5194/amt-12-6695-2019-supplement>
© Author(s) 2019. This work is distributed under
the Creative Commons Attribution 4.0 License.



Supplement of

Detectability of CO₂ emission plumes of cities and power plants with the Copernicus Anthropogenic CO₂ Monitoring (CO2M) mission

Gerrit Kuhlmann et al.

Correspondence to: Gerrit Kuhlmann (gerrit.kuhlmann@empa.ch)

The copyright of individual parts of the supplement might differ from the CC BY 4.0 License.

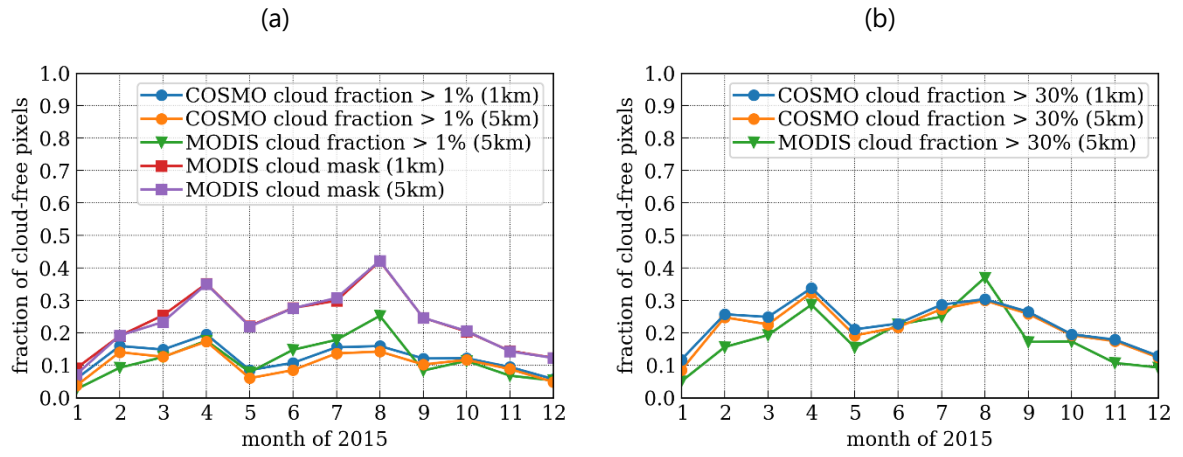


Figure S1: Monthly fractions of cloud-free pixels using COSMO- and MODIS-based cloud masks with different spatial resolution (1 km and 5 km at nadir) and (a) 1% and (b) 30% cloud fraction as threshold.