

Supplement of Atmos. Meas. Tech., 13, 1195–1212, 2020  
<https://doi.org/10.5194/amt-13-1195-2020-supplement>  
© Author(s) 2020. This work is distributed under  
the Creative Commons Attribution 4.0 License.



*Supplement of*

## **Intercomparison between the aerosol optical properties retrieved by different inversion methods from SKYNET sky radiometer observations over Qionghai and Yucheng in China**

**Zhe Jiang et al.**

*Correspondence to:* Huizheng Che (chehz@cma.gov.cn) and Minzheng Duan (dmz@mail.iap.ac.cn)

The copyright of individual parts of the supplement might differ from the CC BY 4.0 License.

## Supplementary Figure captions:

**Figure S1:** The percentage differences in retrieved SSA values by V4.2 (blue) and V5.0 (red) at the wavelength of  $0.5\mu\text{m}$  between cases with and without an assumed error of +5% (+) and -5% (o) for calibration constant  $F_0$ .

**Figure S2:** The percentage differences in retrieved SSA values by V4.2 (blue) and V5.0 (red) at the wavelength of  $0.5\mu\text{m}$  between cases with and without an assumed error of +5% (+) and -5% (o) for solid view angle SVA.

**Figure S3:** The percentage differences in retrieved SSA values by V4.2 (blue) and V5.0 (red) at the wavelength of  $0.5\mu\text{m}$  between cases with and without an assumed error of +50% (+) and -50% (o) for ground surface albedo  $A_g$ .

**Figure S4:** The percentage differences in retrieved AOD values by V4.2 (blue) and V5.0 (red) at the wavelength of  $0.5\mu\text{m}$  between cases with and without an assumed error of +5% (+) and -5% (o) for calibration constant  $F_0$ .

**Figure S5:** The percentage differences in retrieved SSA values by V4.2 (blue) and V5.0 (red) at the wavelength of  $0.5\mu\text{m}$  between cases with and without an assumed error of 1% (.), 2%(\*), 3%(+) and 4%(o) for the atmospheric pressure (PRS).

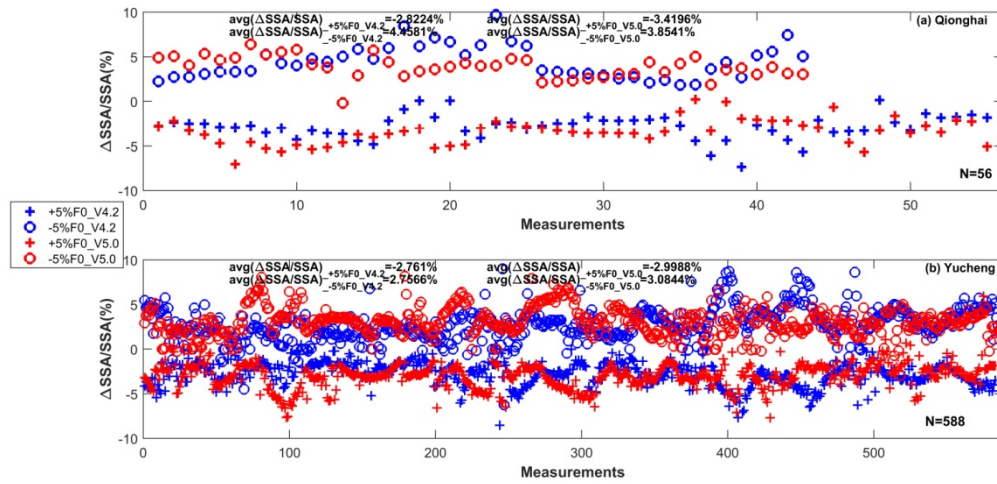


Figure S1: The percentage differences in retrieved SSA values by V4.2 (blue) and V5.0 (red) at the wavelength of  $0.5\mu\text{m}$  between cases with and without an assumed error of +5% (+) and -5% (o) for calibration constant  $F_0$ .

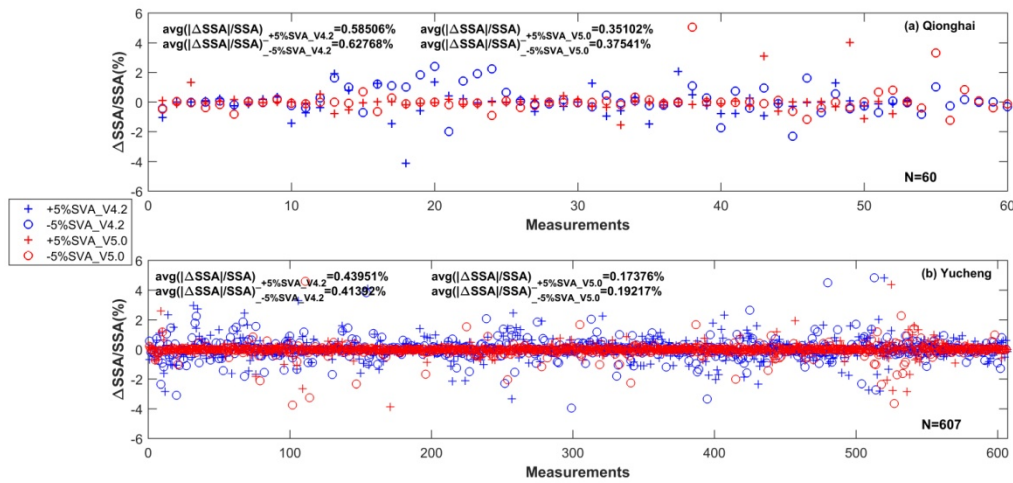


Figure S2: The percentage differences in retrieved SSA values by V4.2 (blue) and V5.0 (red) at the wavelength of  $0.5\mu\text{m}$  between cases with and without an assumed error of +5% (+) and -5% (o) for solid view angle SVA.

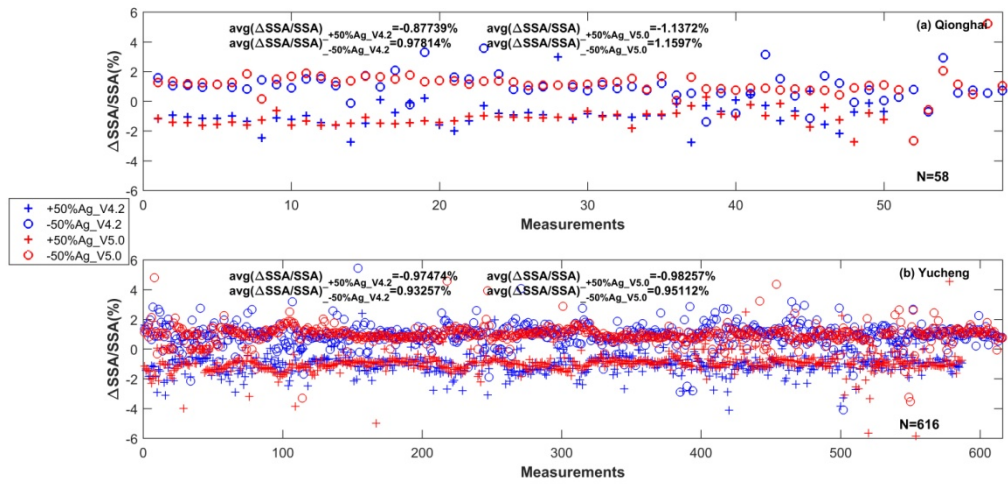


Figure S3: The percentage differences in retrieved SSA values by V4.2 (blue) and V5.0 (red) at the wavelength of 0.5 $\mu$ m between cases with and without an assumed error of +50% (+) and -50% (o) for ground surface albedo Ag.

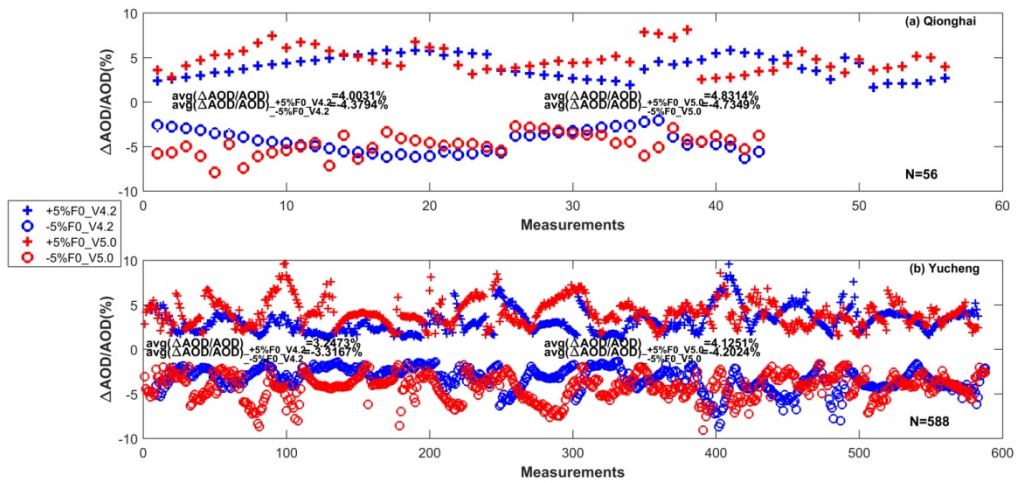


Figure S4: The percentage differences in retrieved AOD values by V4.2 (blue) and V5.0 (red) at the wavelength of 0.5 $\mu$ m between cases with and without an assumed error of +5% (+) and -5% (o) for calibration constant F0.

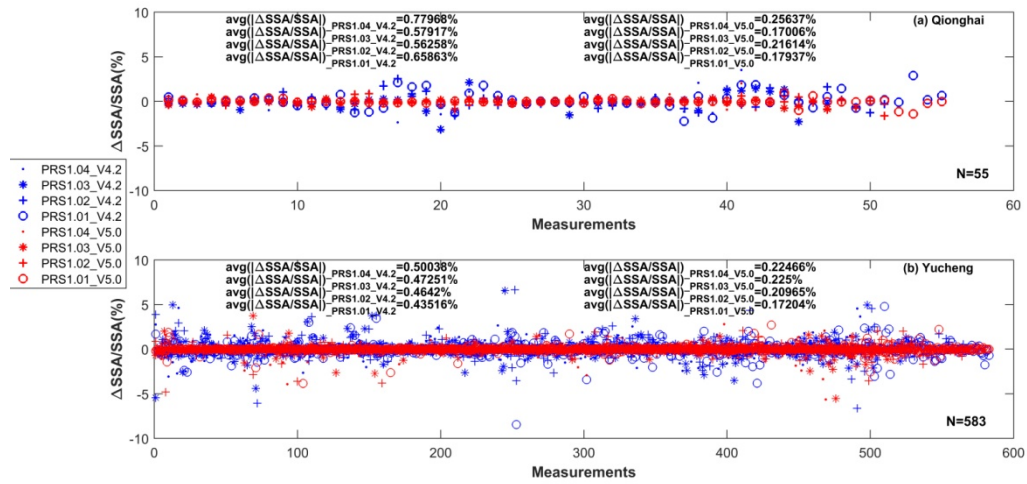


Figure S5: The percentage differences in retrieved SSA values by V4.2 (blue) and V5.0 (red) at the wavelength of 0.5 $\mu$ m between cases with and without an assumed error of 1% (.), 2%(\*), 3%(+) and 4%(o) for the atmospheric pressure (PRS).