

Supplement of Atmos. Meas. Tech., 13, 2887–2904, 2020  
<https://doi.org/10.5194/amt-13-2887-2020-supplement>  
© Author(s) 2020. This work is distributed under  
the Creative Commons Attribution 4.0 License.



*Supplement of*

## **Towards spaceborne monitoring of localized CO<sub>2</sub> emissions: an instrument concept and first performance assessment**

**Johan Strandgren et al.**

*Correspondence to:* Johan Strandgren (johan.strandgren@dlr.de)

The copyright of individual parts of the supplement might differ from the CC BY 4.0 License.

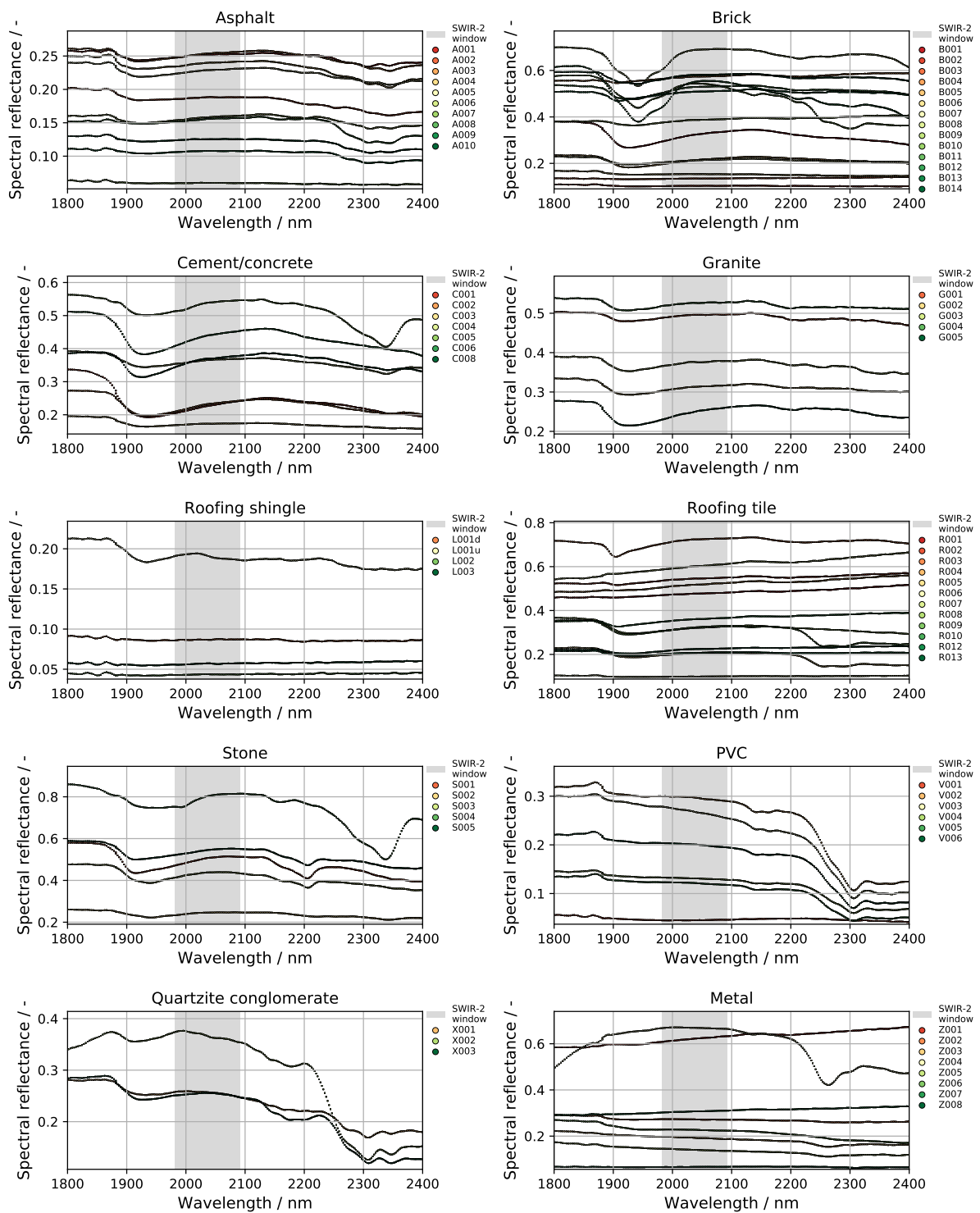


Figure S1: Spectral reflectances for different urban materials belonging to different material classes (see plot titles) as provided by the SLUM (Spectral Library of impervious Urban Materials) dataset. The figure shows that there are no particularly strong albedo features within the SWIR-2 spectral window used in this study (1882–2092 nm, see shaded area). Please see Table C.1 in Kotthaus et al. (2014) and/or the SLUM dataset report accessible at [http://www.met.reading.ac.uk/micromet/documents/LUMA\\_SLUM.pdf](http://www.met.reading.ac.uk/micromet/documents/LUMA_SLUM.pdf) for detailed information about the different urban materials represented by the subclass-IDs A001, A002, A003 etc.