



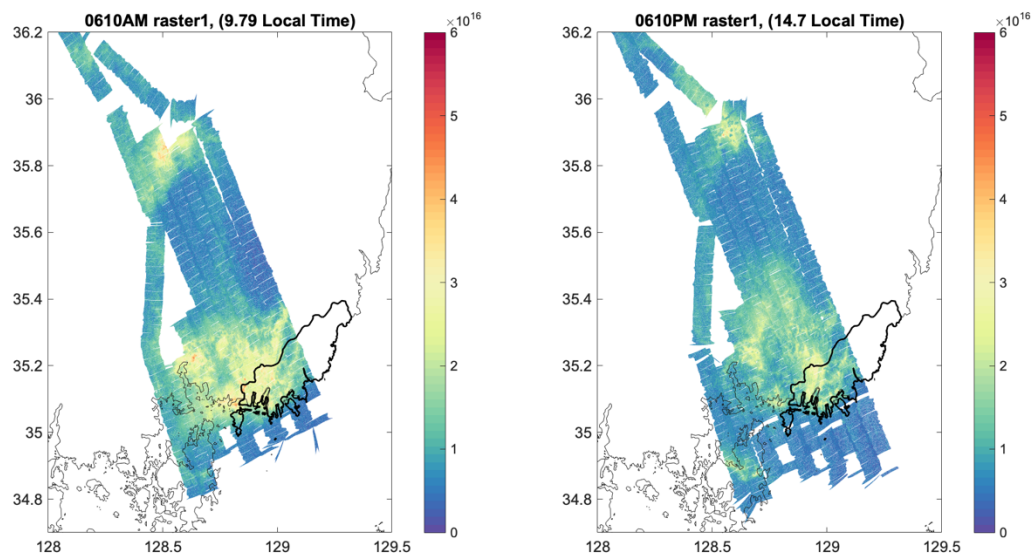
## *Supplement of*

# **Assessing sub-grid variability within satellite pixels over urban regions using airborne mapping spectrometer measurements**

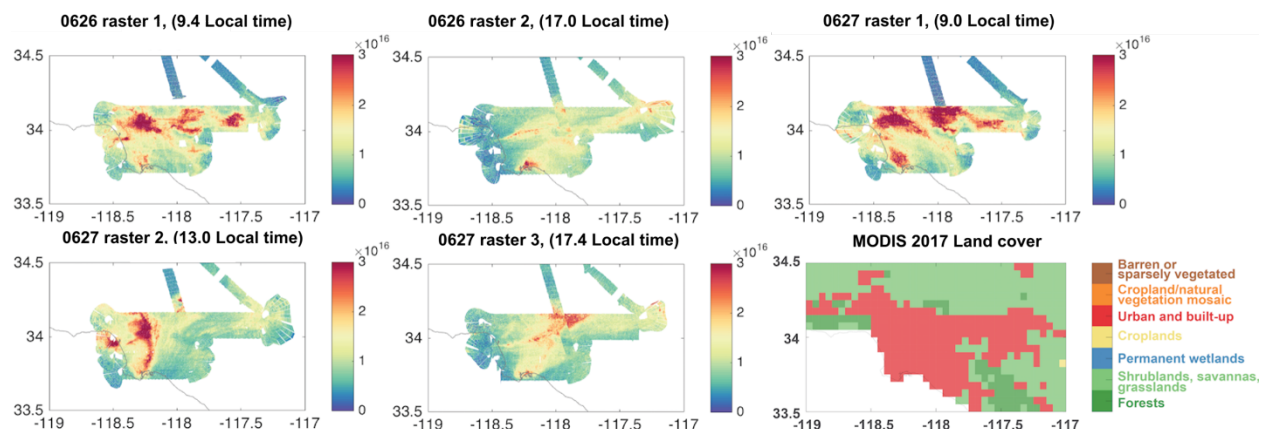
**Wenfu Tang et al.**

*Correspondence to:* Wenfu Tang (wenfut@ucar.edu)

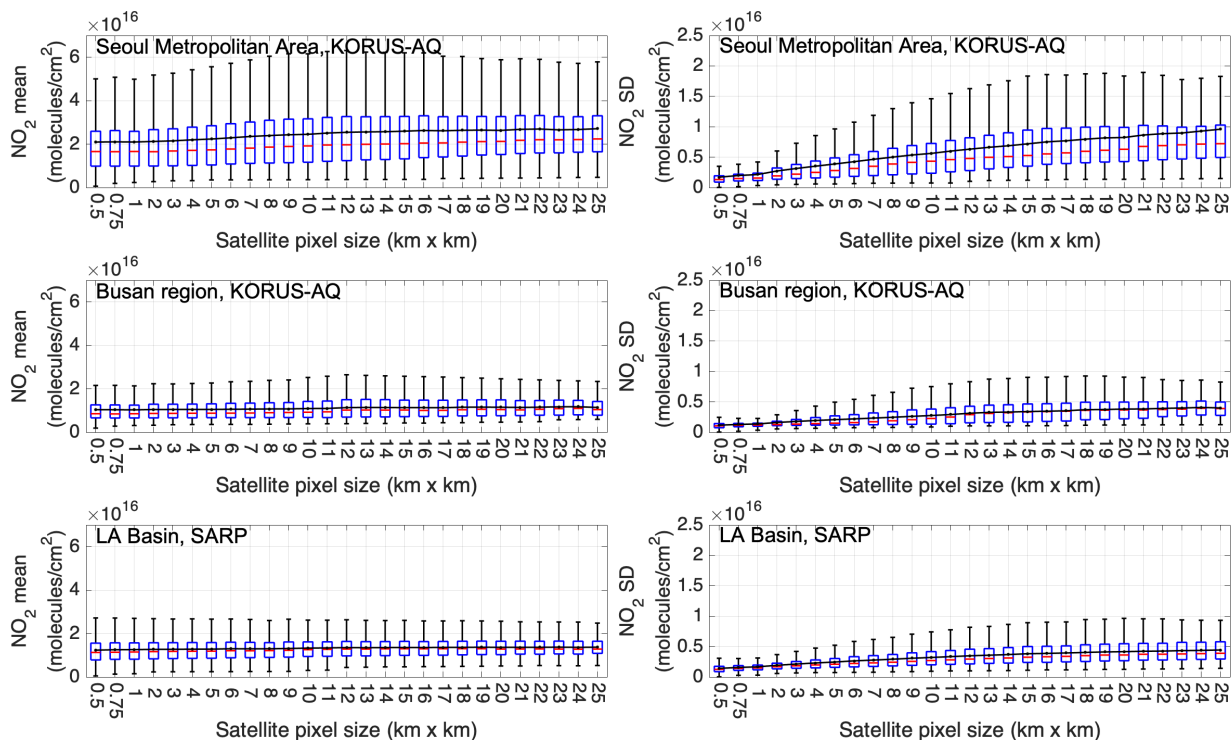
The copyright of individual parts of the supplement might differ from the article licence.



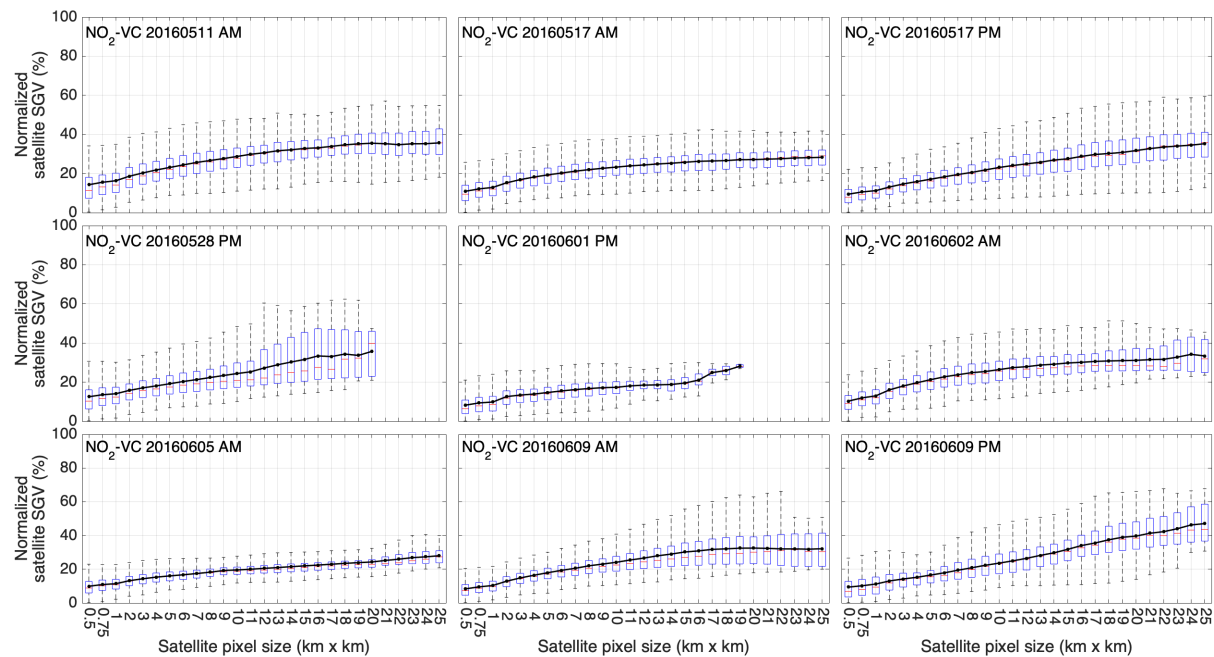
**Figure S1.** GeoTASO data of tropospheric NO<sub>2</sub> VC (molecules cm<sup>-2</sup>) measured during KORUS-AQ over the Busan region. Each panel shows a separate raster. Panel titles show month, day, AM/PM, raster number on that date, and mean time of raster acquisition. The bold polygons in each panel represent political boundary of Busan.



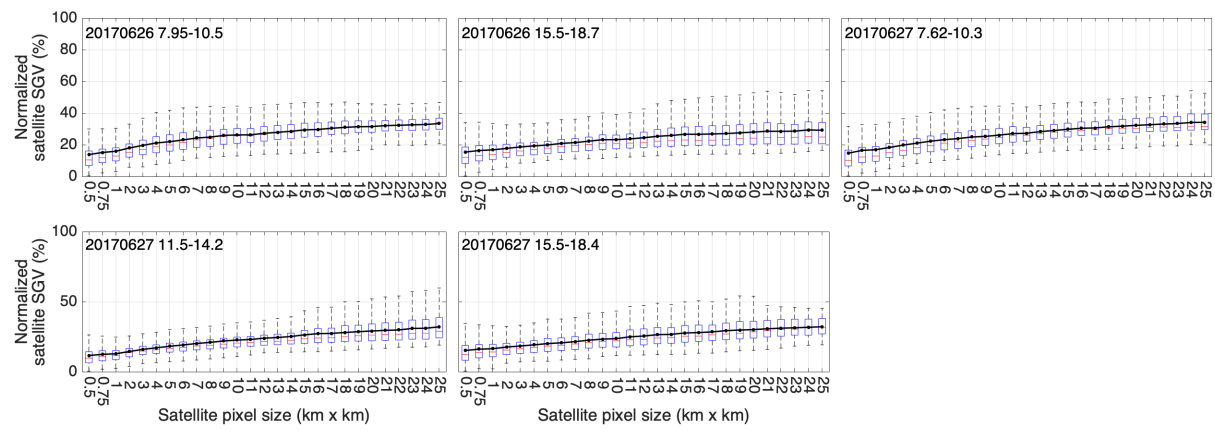
**Figure S2.** GeoTASO data of tropospheric NO<sub>2</sub> VC (molecules cm<sup>-2</sup>) measured during the SARP 2017 campaign over the Los Angeles (LA) Basin. Top panels and lower left-most two panels show separate rasters; panel titles show month, day, raster number on that date, and mean time of raster acquisition. Bottom right panel shows land cover map over the LA basin domain (MODIS Terra and Aqua MCD12C1 L3 product, version V006, annual mean at 0.05° resolution; Friedl et al., 2015).



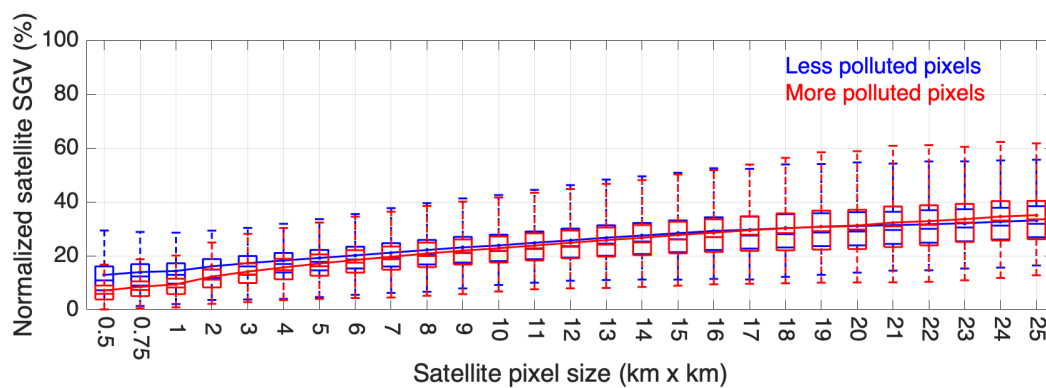
**Figure S3.** Boxplot for the mean (molecules cm<sup>-2</sup>) (panel a, c, e) and standard deviation (molecules cm<sup>-2</sup>) (panel b, d, f) within hypothetical satellite pixels over the Seoul Metropolitan Area, Busan region, and Los Angeles Basin. Medians are represented by red bars, interquartile ranges between 25th and 75th percentiles by blue boxes, and the most extreme data points not considered outliers by whiskers. The black lines represent the average of the mean and SD within satellite pixels at a given size.



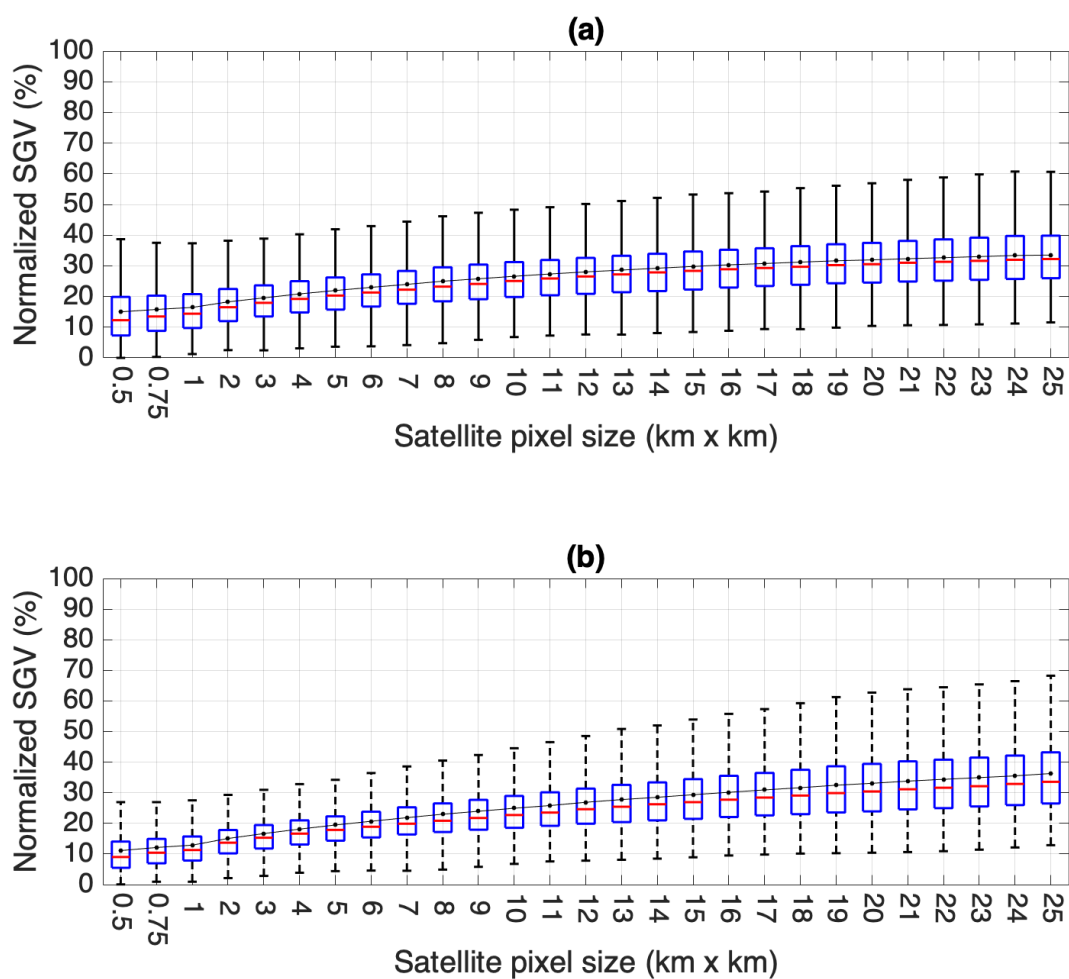
**Figure S4.** Same as Figure 4 but for individual flights over SMA.



**Figure S5.** Same as Figure S4 but for individual flights over LA Basin.

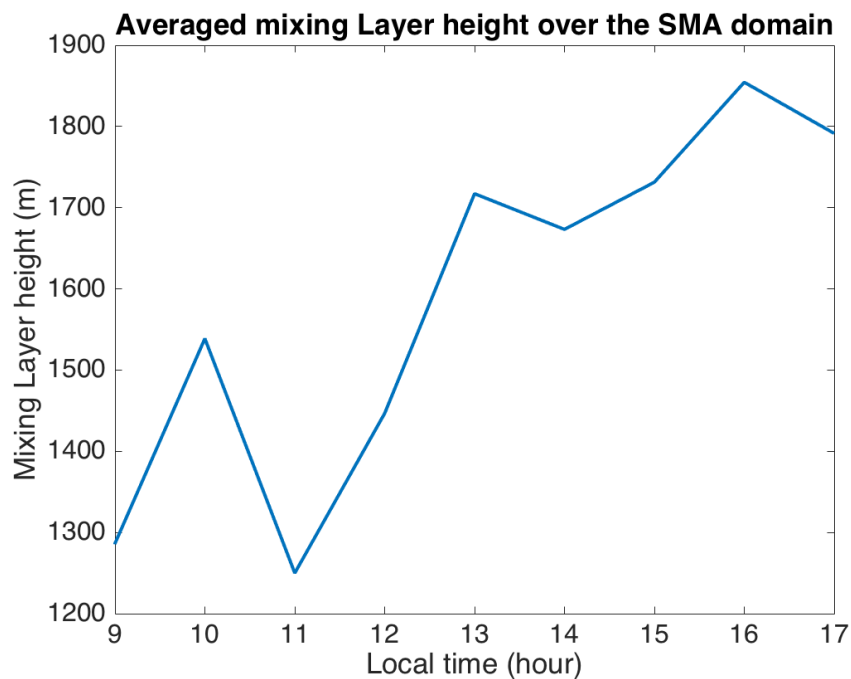


**Figure S6.** Boxplot (with medians represented by bars, interquartile ranges between 25th and 75th percentiles represented by boxes, and the most extreme data points not considered outliers represented by whiskers) for the relative sub-grid variabilities within hypothetical satellite pixels that are less polluted (the mean of the satellite pixel is lower than the average value of all pixels, i.e.,  $2 \times 10^{16}$  molecules  $\text{cm}^{-2}$ ; shown in blue) and more polluted (the mean of the satellite pixel is

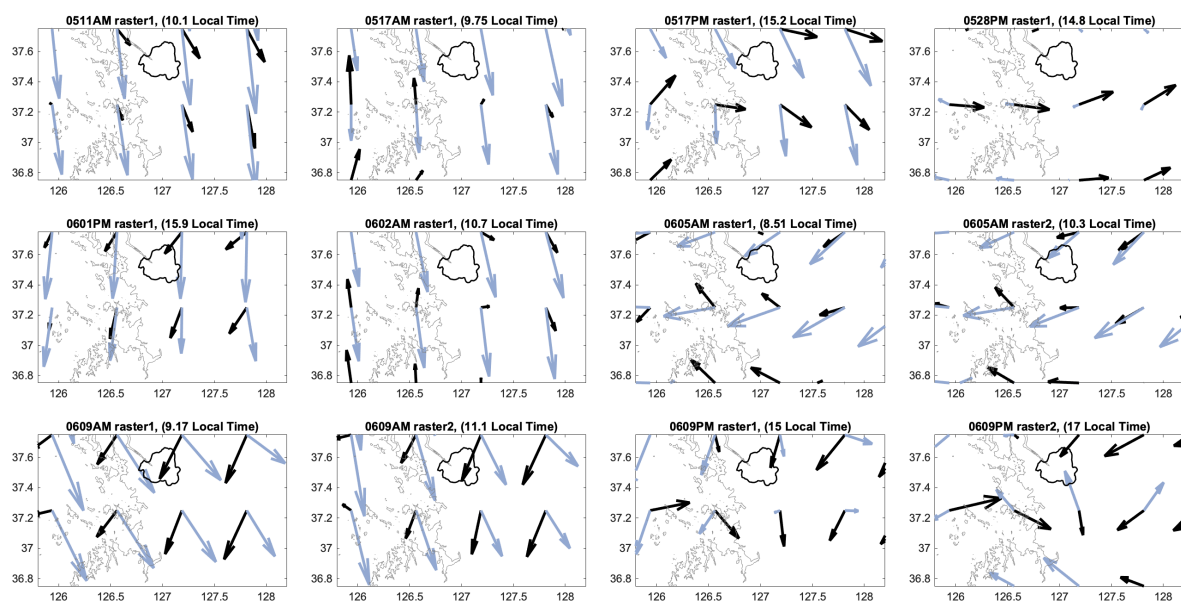


**Figure S7.** Same as Figure 4 but for (a) sampling hypothetical satellite pixels directly without grouping the GeoTASO data by time over the Seoul Metropolitan Area (SMA) and (b) sampling hypothetical satellite pixels based on rasters.

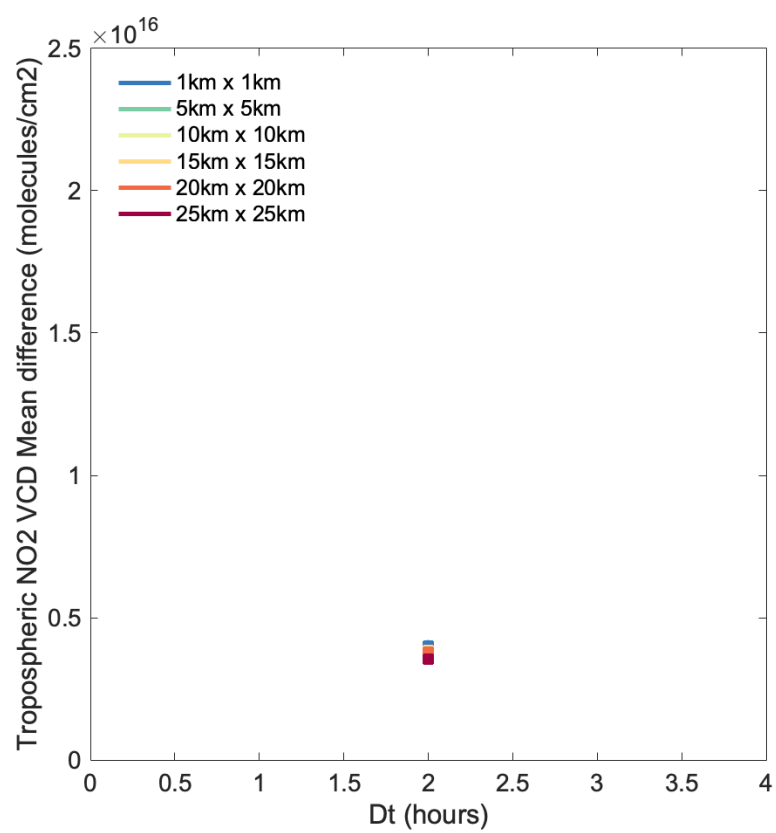




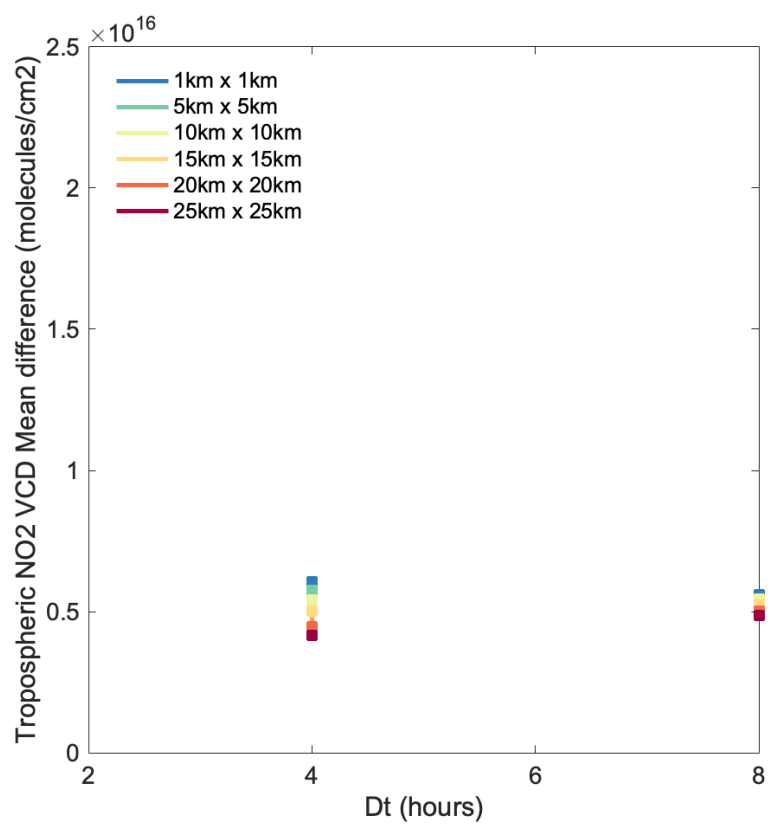
**Figure S8.** Averaged hourly mixing layer height over the Seoul Metropolitan Area during KORUS-AQ. The mixing layer height data are derived from the KORUS-AQ Airborne Differential Absorption Lidar – High Spectral Resolution Lidar (DIAL-HSRL) measurements of aerosol backscatter. Mixing layer height is only approximately equal to planetary boundary layer (PBL) height.



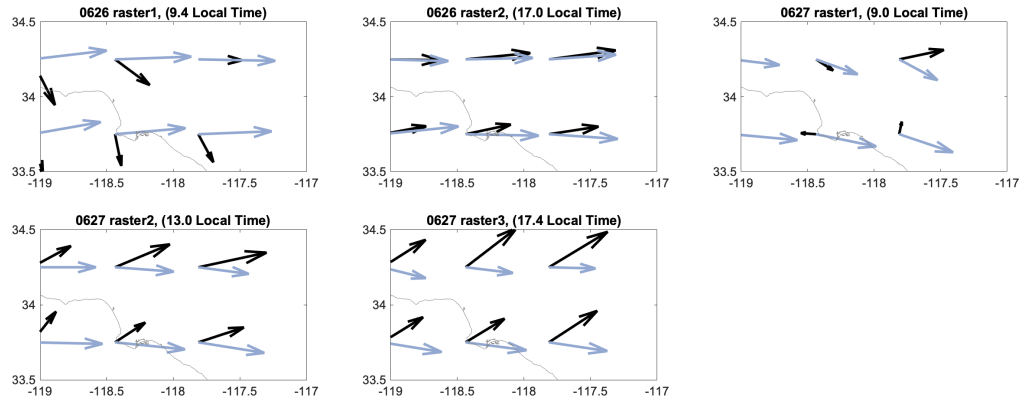
**Figure S9.** Wind fields (from MERRA-2 reanalysis dataset; GMAO, 2015) at model surface level (black) and 3 km (blue) at the raster time over Seoul Metropolitan Area during KORUS-AQ. The bold polygons in each panel represent political boundary of Seoul.



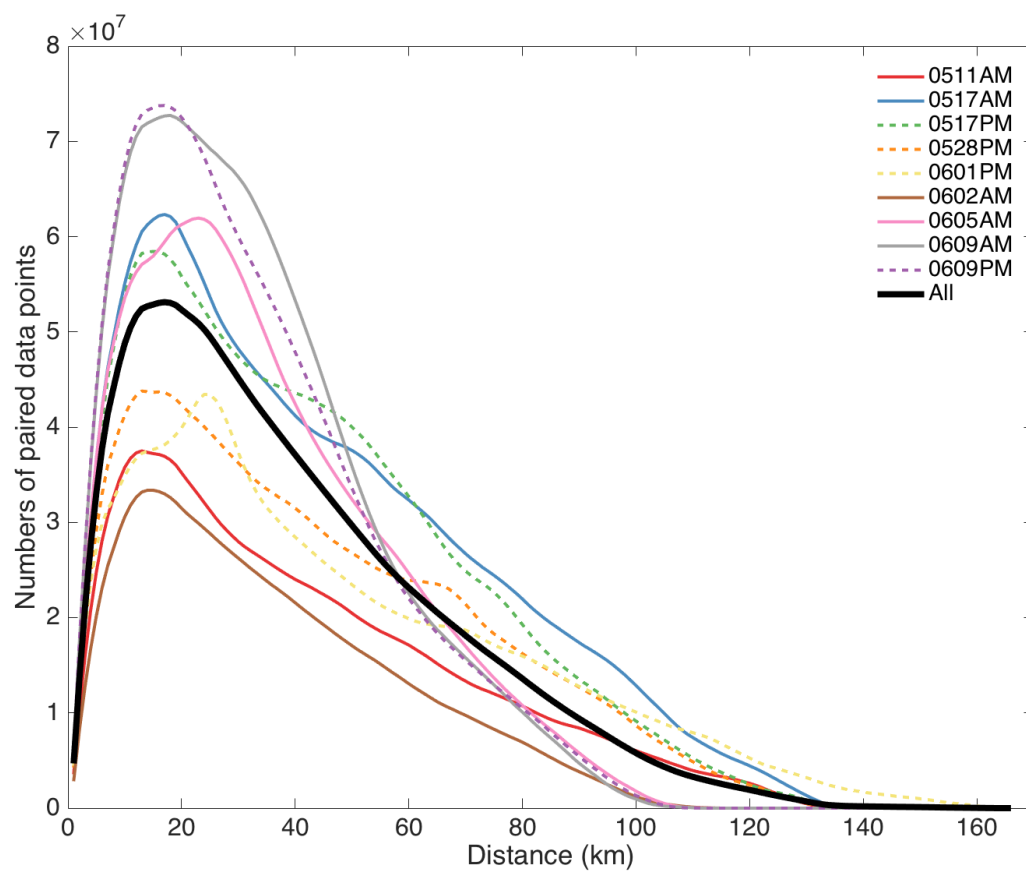
**Figure S10.** Same as Figure 6 but for Busan region.



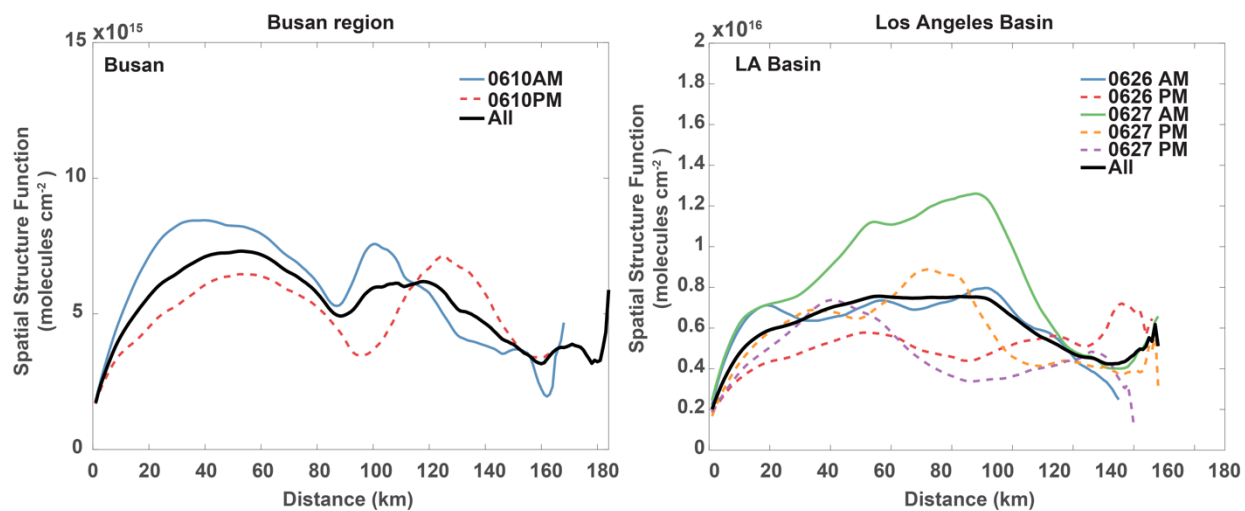
**Figure S11.** Same as Figure 6 but for Los Angeles (LA) Basin.



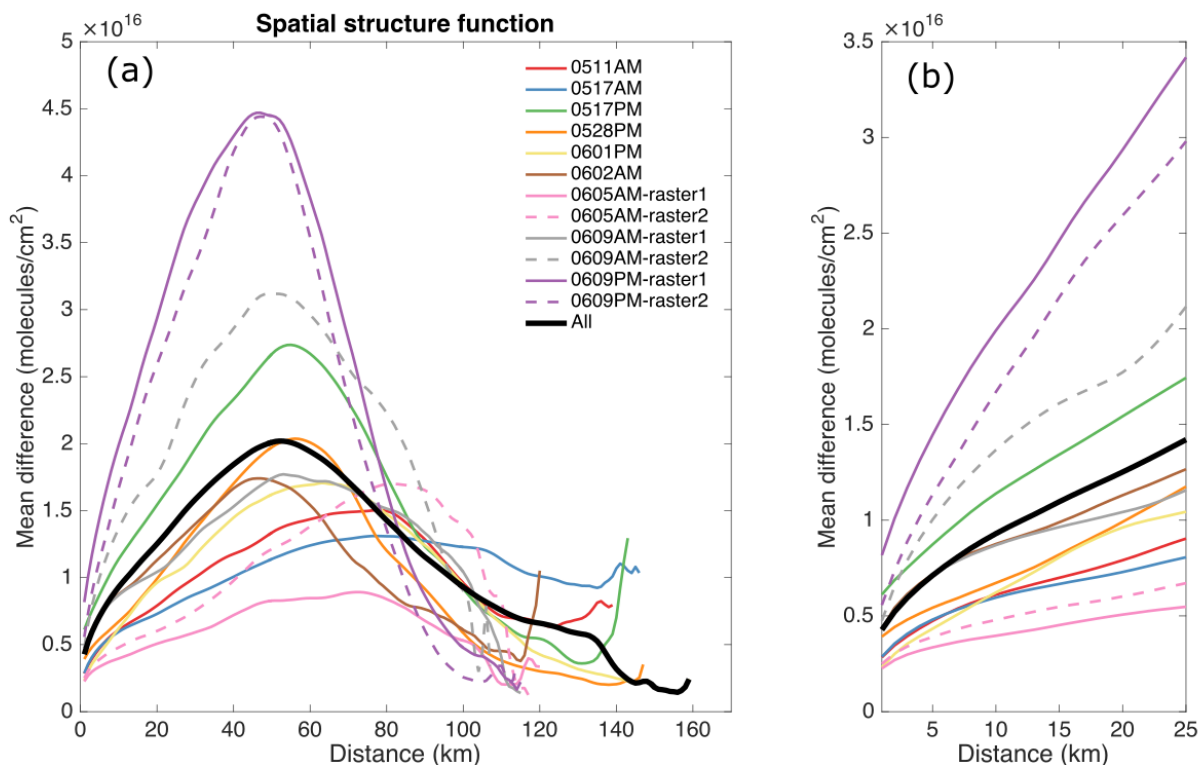
**Figure S12.** Wind fields (from MERRA-2 reanalysis dataset; GMAO, 2015) at model surface level (black) and 3 km (blue) at the raster time over LA Basin.



**Figure S13.** Numbers of paired GeoTASO data points used to calculate Spatial Structure Function (SSF; Figure 7) over the Seoul Metropolitan Area (SMA) during KORUS-AQ.

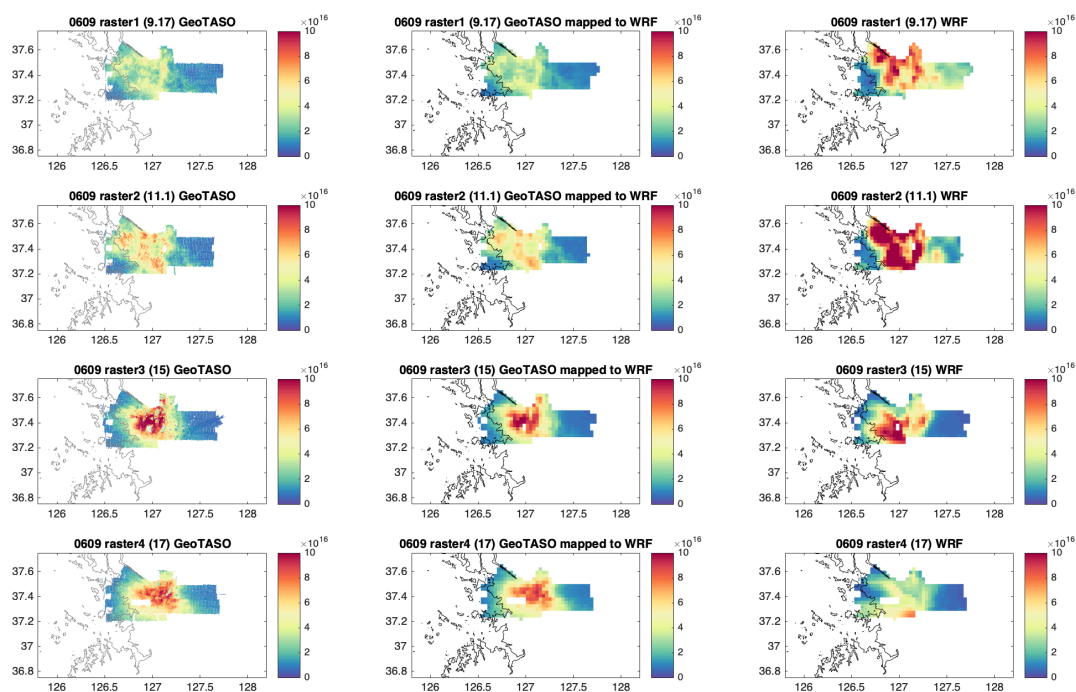


**Figure S14.** Same as Figure 7a but for Busan (left) and Los Angeles (LA) Basin (right).



**Figure S15.** (a) Spatial Structure Function (SSF) for GeoTASO data of tropospheric  $\text{NO}_2$  VC molecules  $\text{cm}^{-2}$  over the Seoul Metropolitan Area (SMA) during KORUS-AQ and (b) the zoom-in version of panel (a) for distance range of 1-25 km. The SSF calculates average of absolute value of  $\text{NO}_{2,\text{VC}}$  differences (i.e., mean difference; y-axis) across all data pairs with in the same raster (instead of hourly bin) that are separated by different distance (x-axis). The SSF based on GeoTASO data measured during morning flights are in solid colored lines while the SSF based on GeoTASO data measured during afternoon flights are in dashed colored lines. The SSF based on all the data are in black solid line.





**Figure S16.** GeoTASO data of tropospheric NO<sub>2</sub> vertical column (molecules cm<sup>-2</sup>) measured during 4 rasters on June 9<sup>th</sup>, 2016 over the Seoul Metropolitan Area (left column), GeoTASO data gridded to WRF-Chem grids (middle column), and corresponding filtered WRF-Chem model output according to the GeoTASO data coverage (right column).