



Supplement of

Validation of Aeolus Level 2B wind products using wind profilers, ground-based Doppler wind lidars, and radiosondes in Japan

Hironori Iwai et al.

Correspondence to: Hironori Iwai (iwai@nict.go.jp)

The copyright of individual parts of the supplement might differ from the article licence.

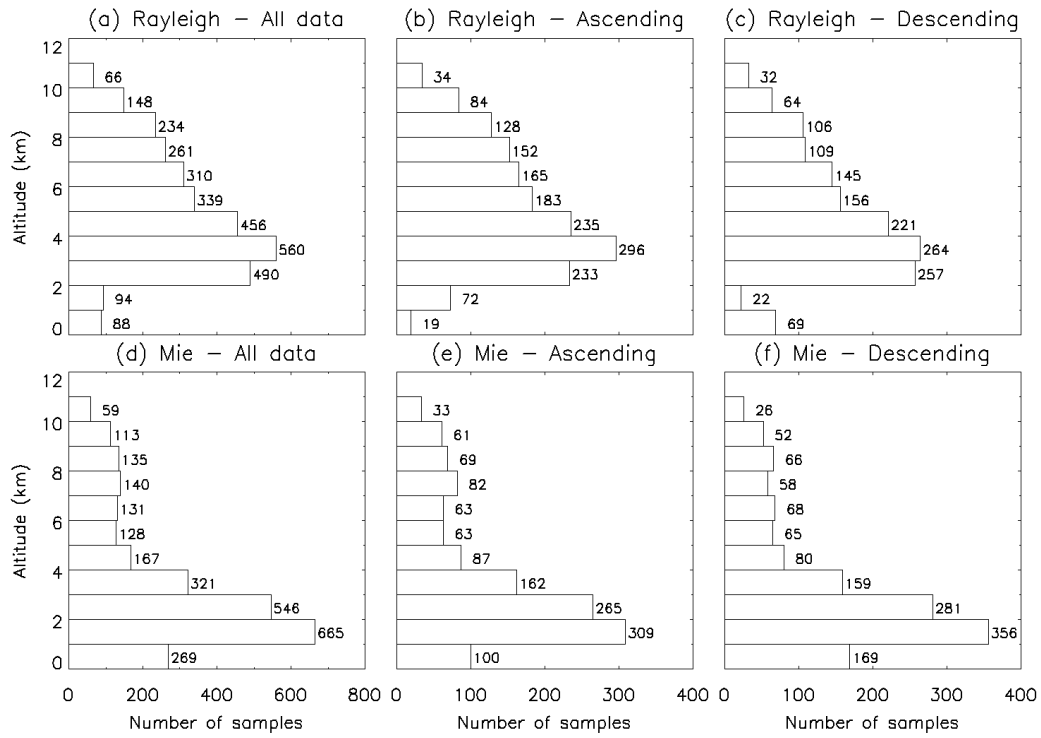


Figure S1. Vertical profiles in 1 km bins of the number of compared data points between the Aeolus and WPR HLOS winds for (a, b, c) Rayleigh-clear winds and (d, e, f) Mie-cloudy winds for (a, d) all data and (b, e) ascending and (c, f) descending orbits for baseline 2B02.

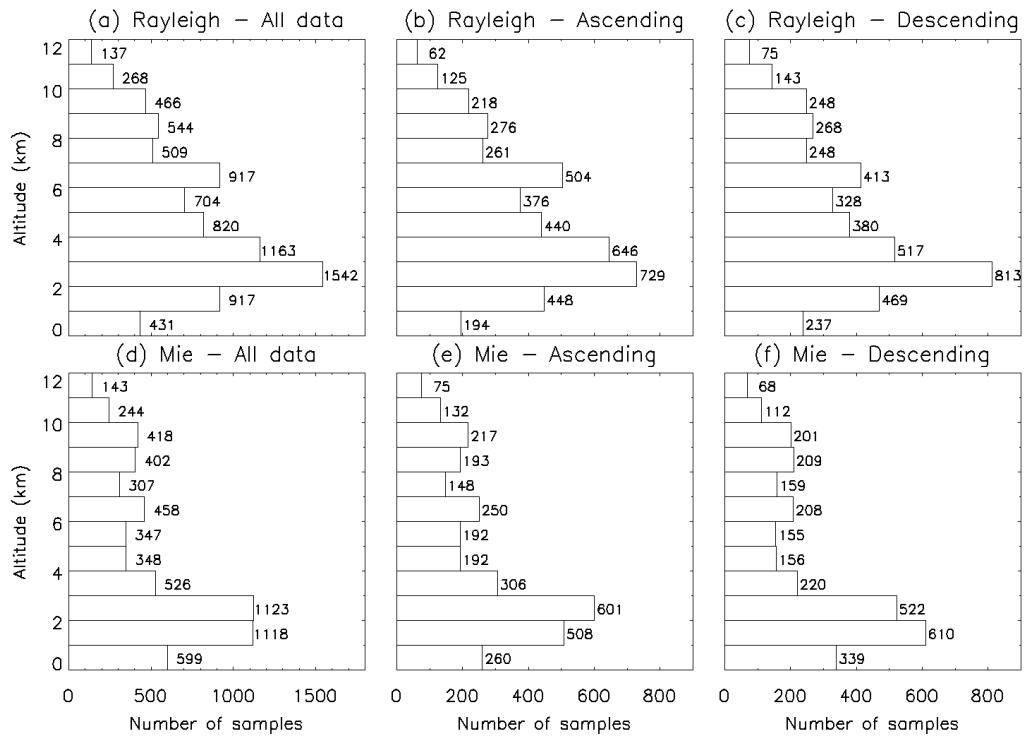


Figure S2. Same as Fig. S1 but for baseline 2B10.