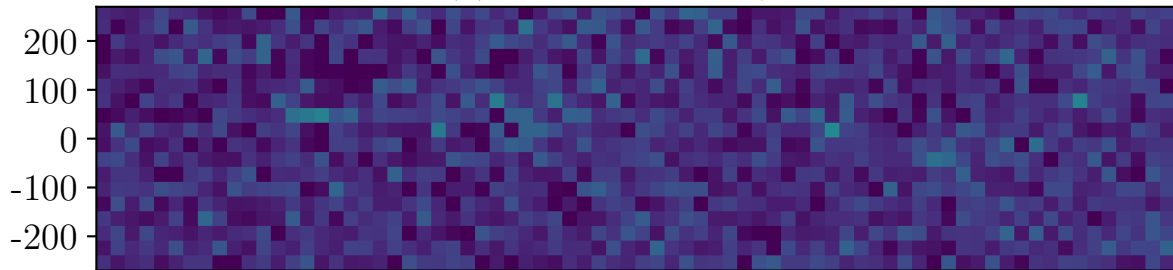
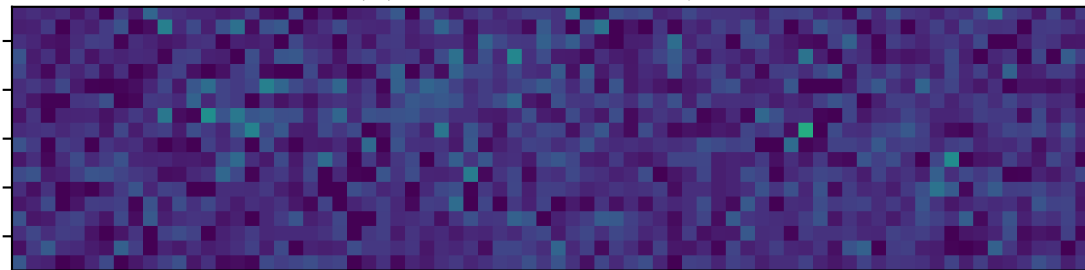


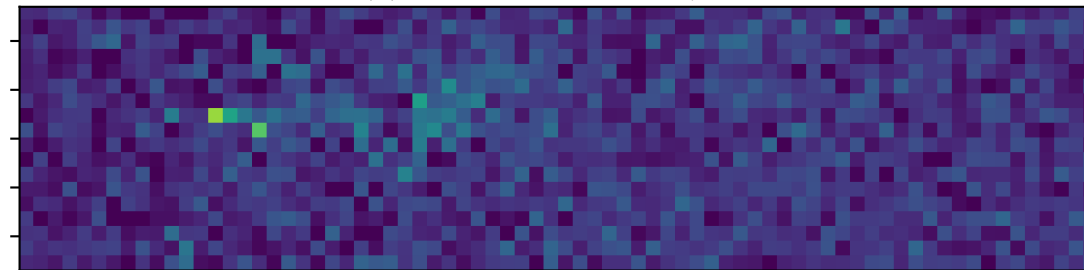
(a) Flux rate: 50 kg/h



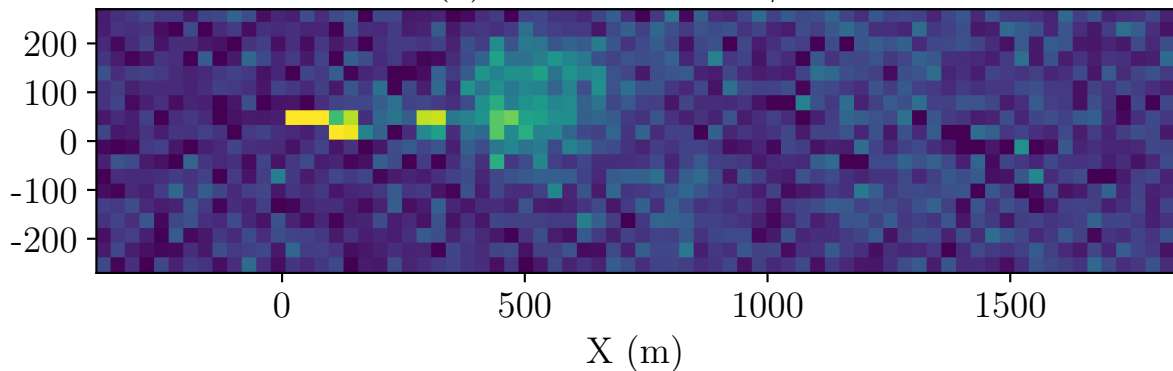
(b) Flux rate: 100 kg/h



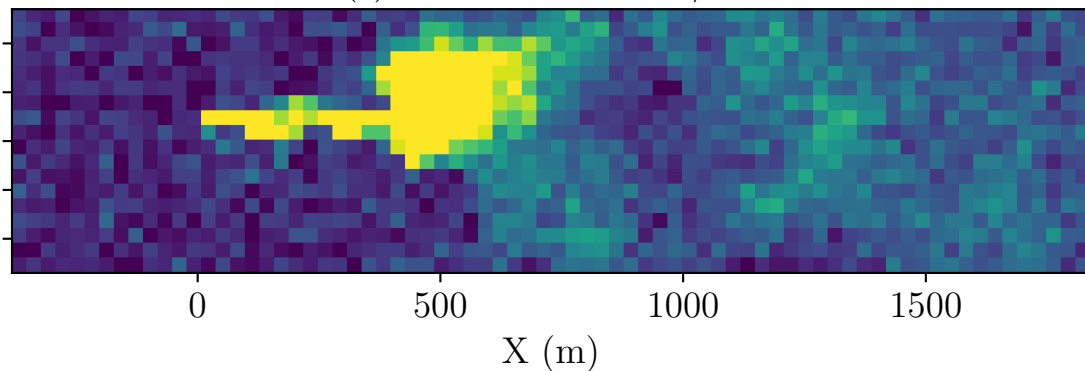
(c) Flux rate: 200 kg/h



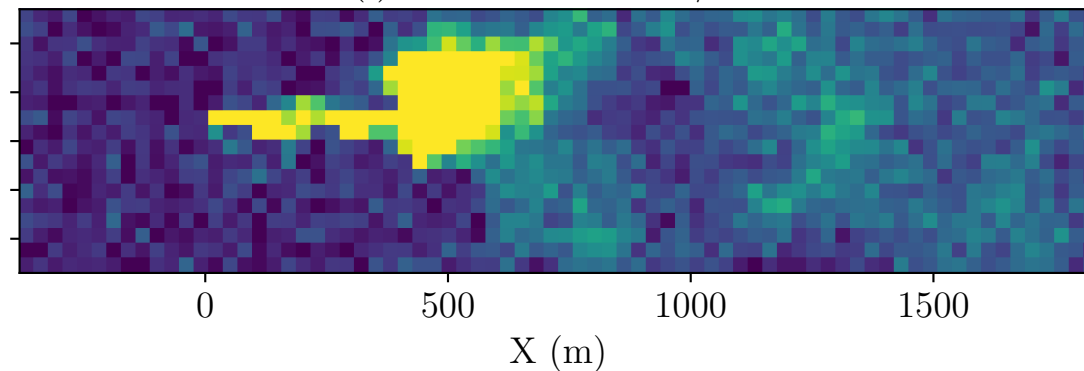
(d) Flux rate: 500 kg/h



(e) Flux rate: 1000 kg/h



(f) Flux rate: 2000 kg/h

mole m^{-2}

0.07

0.06

0.05

0.04

0.03

0.02

0.01

0.00