



*Supplement of*

## **Variations of Arctic winter ozone from the LIMS Level 3 dataset**

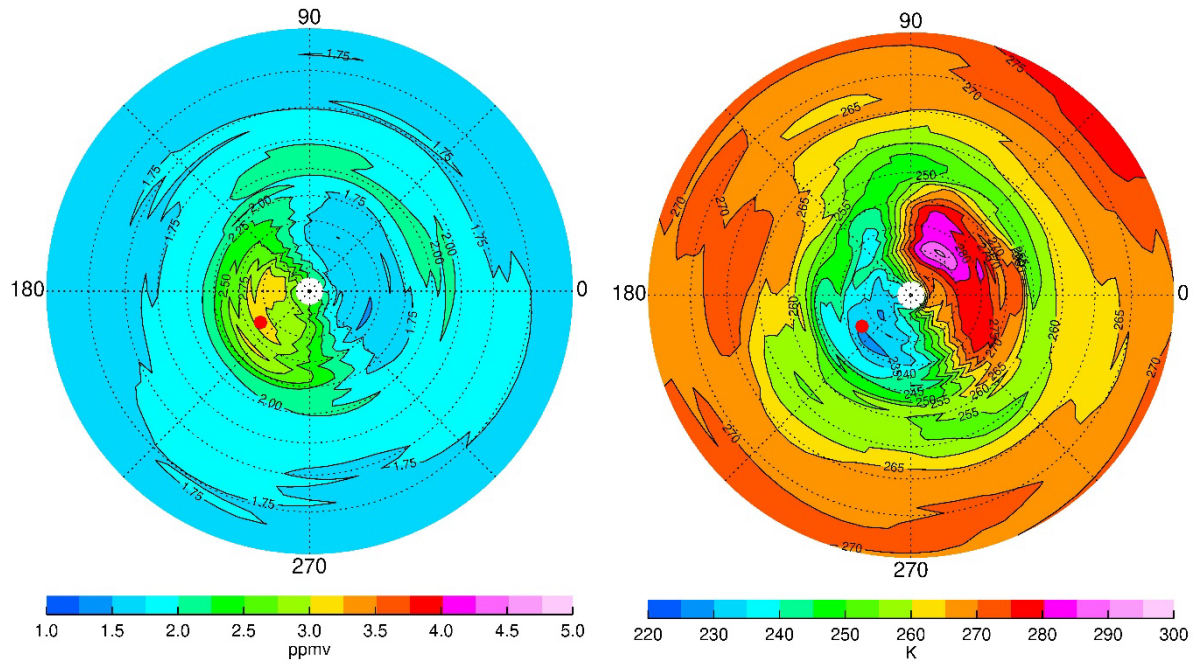
**Ellis Remsberg et al.**

*Correspondence to:* Ellis Remsberg ([ellis.e.remsberg@nasa.gov](mailto:ellis.e.remsberg@nasa.gov))

The copyright of individual parts of the supplement might differ from the article licence.

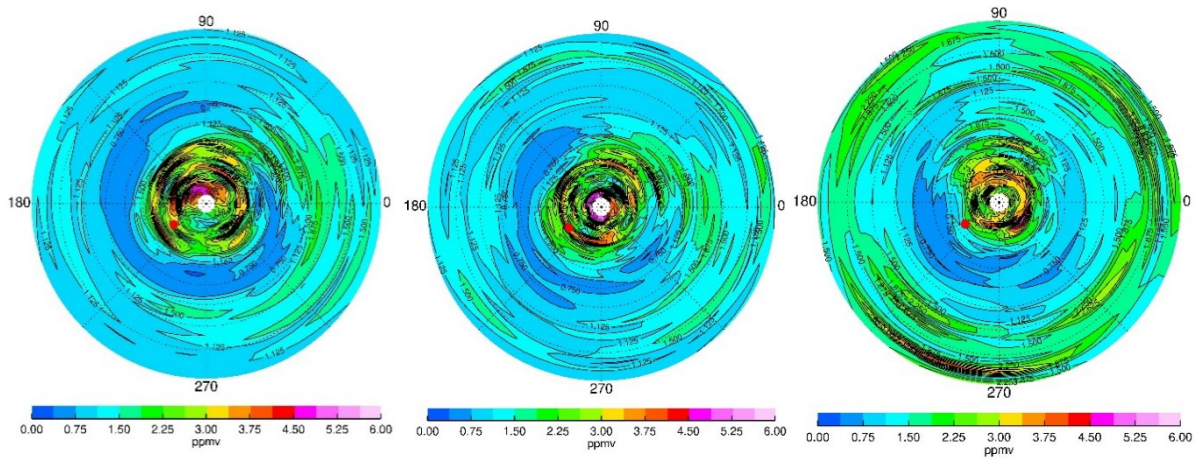
1  
2  
3  
4

### Supplemental Materials



5  
6  
7  
8  
9  
10  
11  
12

Figure S1—(left) Ozone at 0.46 hPa for January 27, 1979, for comparison with Fig. 6. (right) Temperature at 0.46 hPa for comparison with Fig. 7. Contour interval is 0.25 ppmv for ozone and 5 K for T(p). Red dot is location of Poker Flat.



13

14

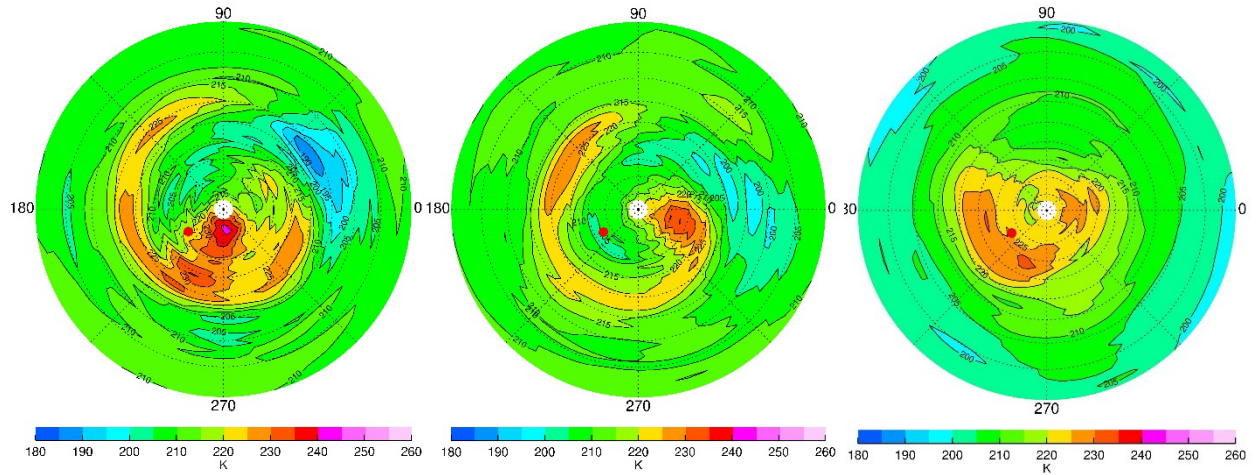
15 Figure S2—Distributions of NH ozone at 0.022 hPa: (left) January 13, (middle) February 10, and

16 (right) March 1. Contour interval is 0.25 ppmv.

17

18

19



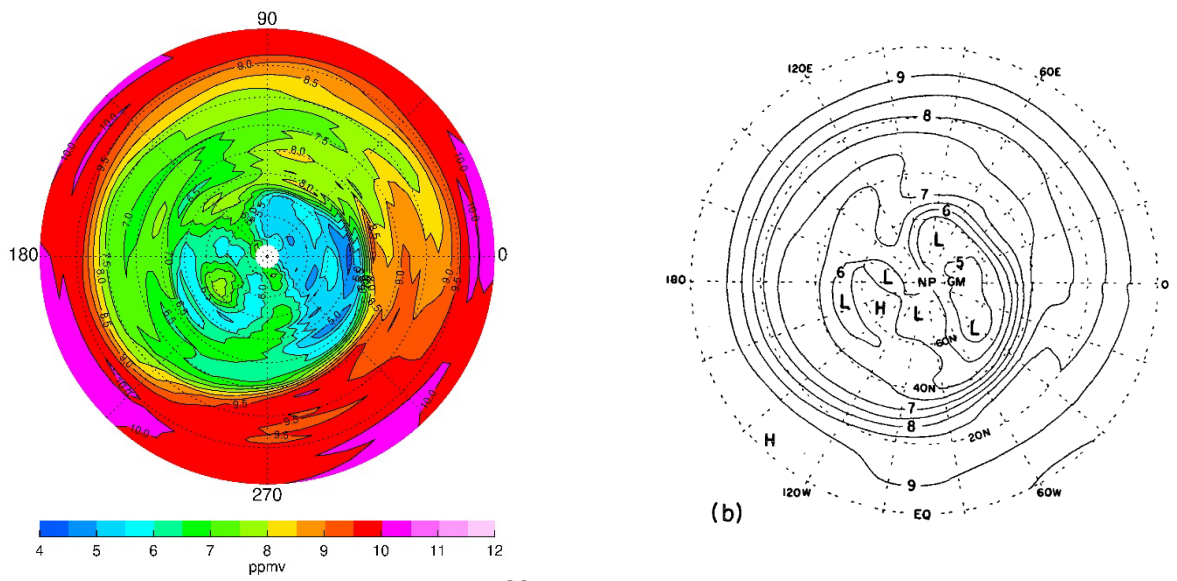
20

21 Figure S3—Distributions of NH temperature at 0.022 hPa: (left) January 13, (middle) February  
22 10, and (right) March 1. Contour interval is 5 K.

23

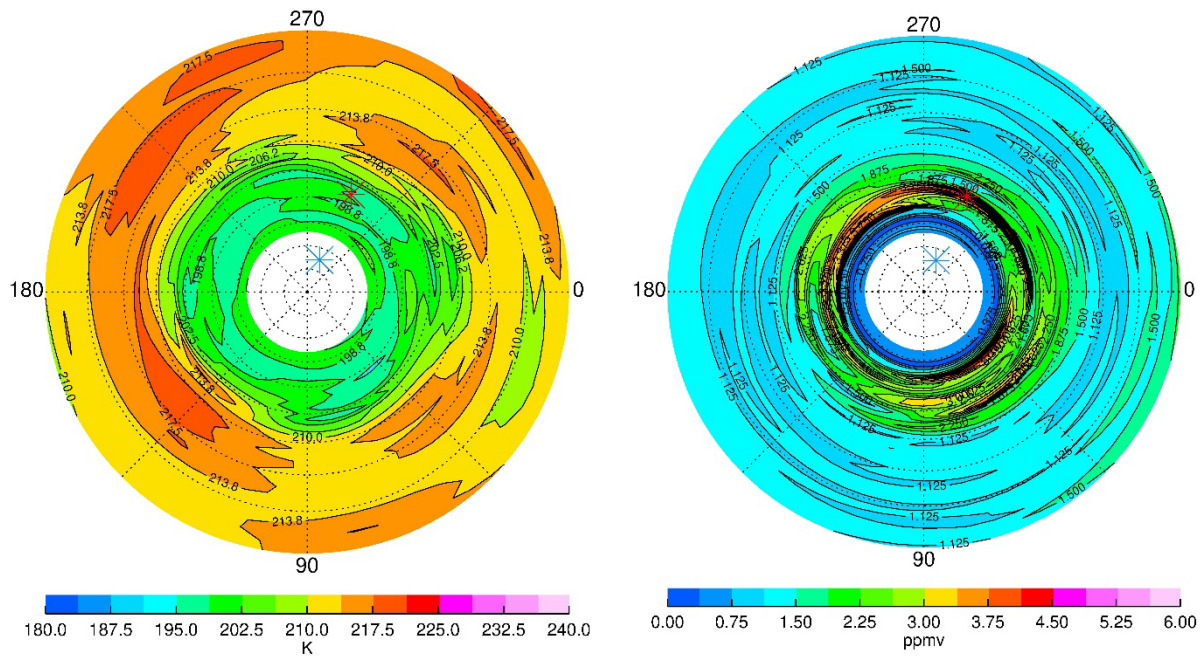
24

25  
26  
27  
28  
29  
30  
31  
32  
33  
34



36  
37  
38  
39  
40  
41  
42

Figure S4—Comparison of ozone at 10 hPa for 27 January from (left) V6 versus (right) from Leovy et al. (1985).



44

45

46 Figure S5—SH temperature (left) and ozone (right) at 0.032 hPa on January 15. Blue asterisk  
 47 denotes satellite position (-75°S, 291°E); red asterisk denotes tangent point (-45°S, 294°E).  
 48 LIMS view is from satellite to tangent point along temperature gradient maxima. Day/night  
 49 terminator is near 60°S.

50