



Supplement of

Atmospheric visibility inferred from continuous-wave Doppler wind lidar

Manuel Queißer et al.

Correspondence to: Manuel Queißer (manuelqueisser@web.de)

The copyright of individual parts of the supplement might differ from the article licence.

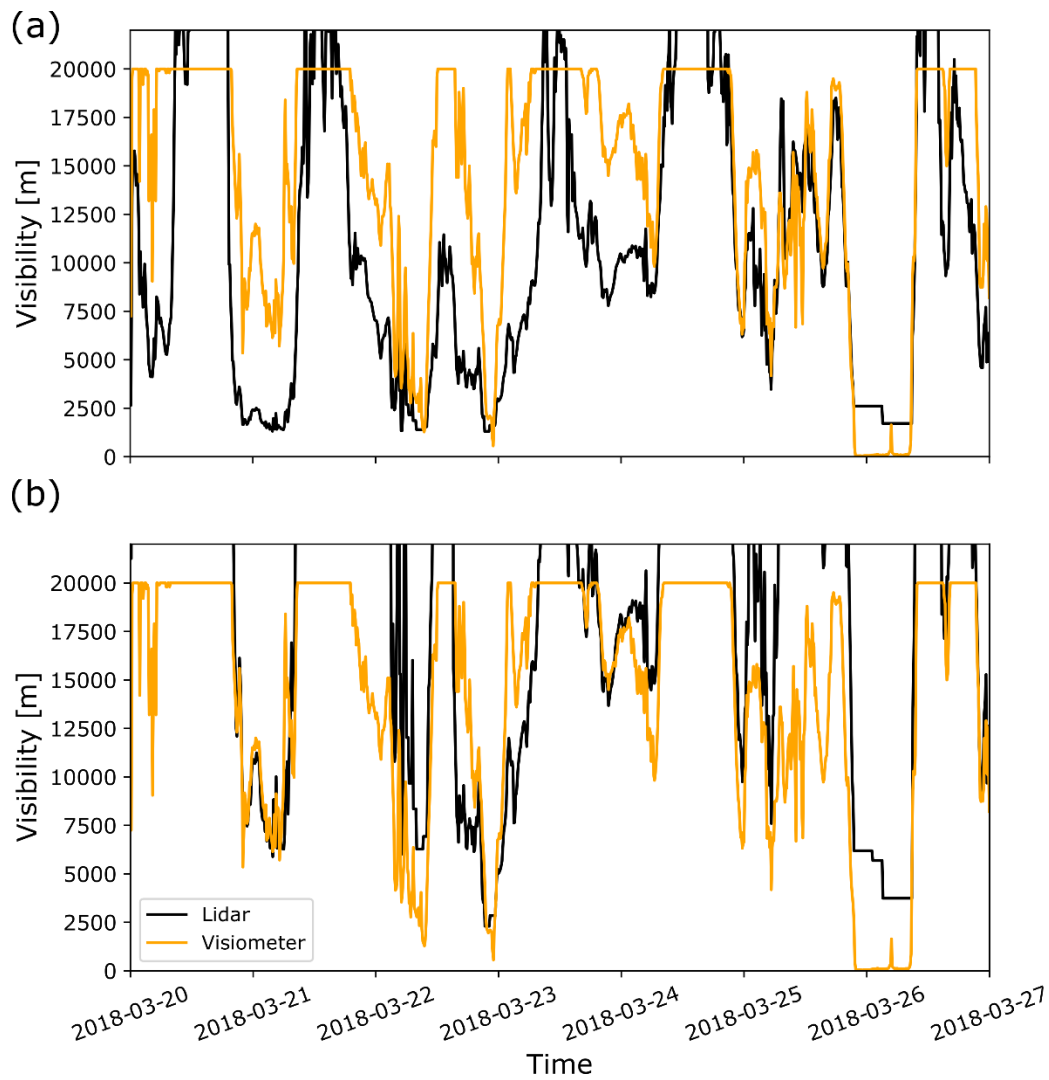


Figure S1. Linking lidar backscatter from 39 m agl to visibility for Cabauw using Method A. The visibility sensor data are from 40 m agl. The lidar ratio used is 70 sr. (a) A constant Ångström exponent of 2.0 was assumed. (b) Same as in (a) but coinciding Ångström exponent time series from the AERONET station at Cabauw were used, which were resampled to 10 min temporal resolution, as the lidar backscatter and the visiometer data. The visiometer data above 20 km are clipped by the visibility sensor.