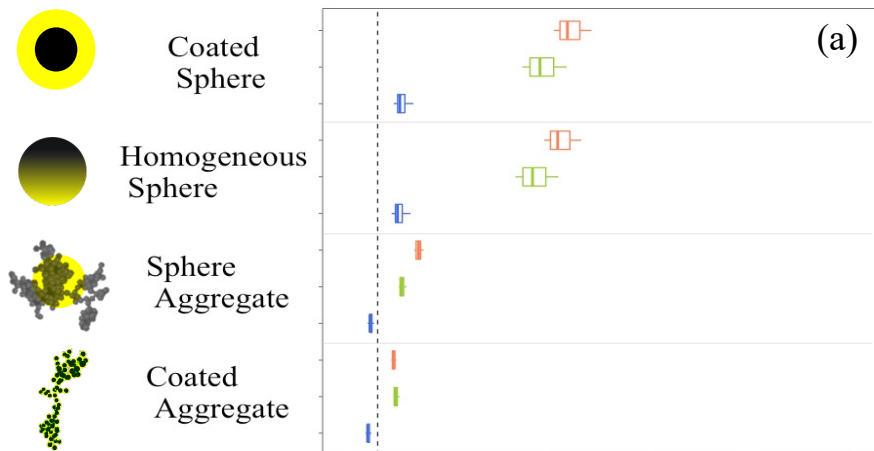


### Mini-CAST 5201BC

#### Case VI

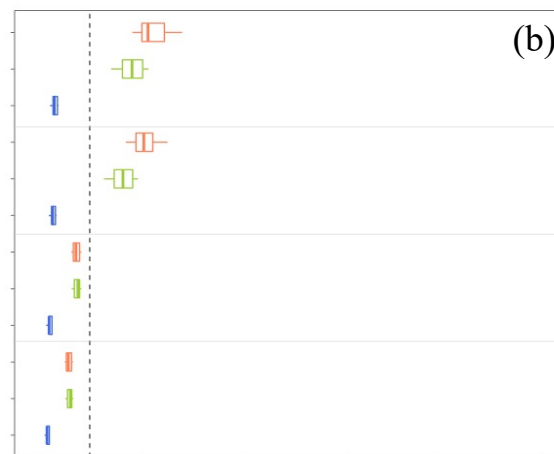
$d_{p,V} = 126 \text{ nm}; \phi = 0.96; f_{oc} = 22\%$



### Mini-CAST 5203C

#### Case VIII

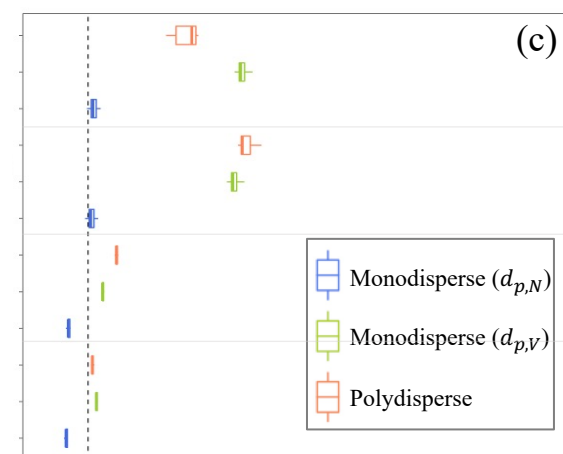
$d_{p,V} = 86 \text{ nm}; \phi = 0.93; f_{oc} = 53\%$



### Mini-CAST 5303C

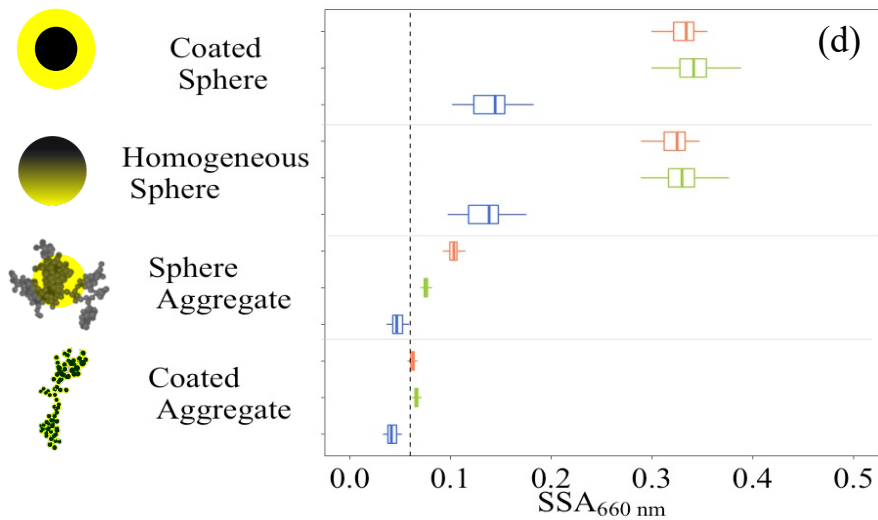
#### Case X

$d_{p,V} = 122 \text{ nm}; \phi = 0.80; f_{oc} = 23\%$



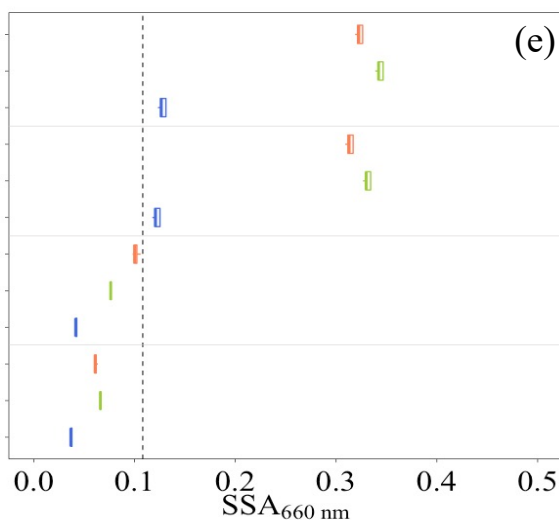
#### Case VII

$d_{p,V} = 181 \text{ nm}; \phi = 0.94; f_{oc} = 22\%$



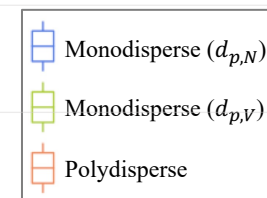
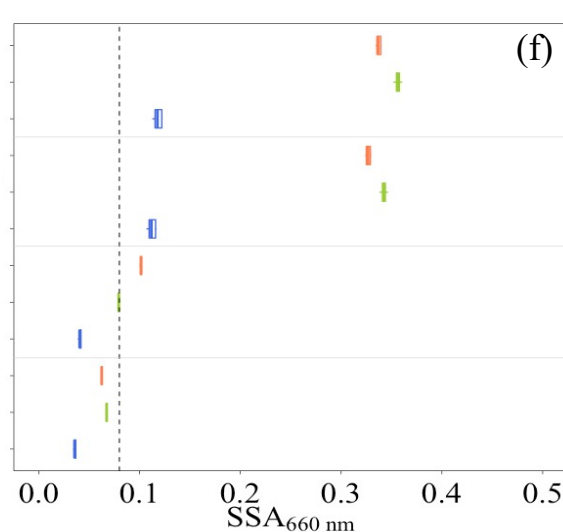
#### Case IX

$d_{p,V} = 174 \text{ nm}; \phi = 1.01; f_{oc} = 24\%$



#### Case XI

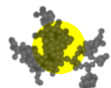
$d_{p,V} = 181 \text{ nm}; \phi = 0.80; f_{oc} = 27\%$



Coated Sphere



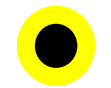
Homogeneous Sphere



Sphere Aggregate



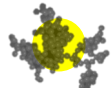
Coated Aggregate



Coated Sphere



Homogeneous Sphere



Sphere Aggregate



Coated Aggregate

$SSA_{660 \text{ nm}}$

$SSA_{660 \text{ nm}}$

$SSA_{660 \text{ nm}}$