



# Estimation of 24 h continuous cloud cover using a ground-based imager with a convolutional neural network

Bu-Yo Kim, Joo Wan Cha, and Yong Hee Lee

Research Applications Department, National Institute of Meteorological Sciences, Seogwipo, Jeju, 63568, South Korea

**Correspondence:** Bu-Yo Kim (kimbuyo@korea.kr)

Received: 25 June 2023 – Discussion started: 24 July 2023

Revised: 8 September 2023 – Accepted: 7 October 2023 – Published: 13 November 2023

**Abstract.** In this study, we aimed to estimate cloud cover with high accuracy using images from a camera-based imager and a convolutional neural network (CNN) as a potential alternative to human-eye observation on the ground. Image data collected at 1 h intervals from 2019 to 2020 at a staffed weather station, where human-eye observations were performed, were used as input data. The 2019 dataset was used for training and validating the CNN model, whereas the 2020 dataset was used for testing the estimated cloud cover. Additionally, we compared satellite (SAT) and ceilometer (CEI) cloud cover to determine the method most suitable for cloud cover estimation at the ground level. The CNN model was optimized using a deep layer and detailed hyperparameter settings. Consequently, the model achieved an accuracy, bias, root mean square error (RMSE), and correlation coefficient ( $R$ ) of 0.92,  $-0.13$ , 1.40 tenths, and 0.95, respectively, on the test dataset, and exhibited approximately 93 % high agreement at a difference within  $\pm 2$  tenths of the observed cloud cover. This result demonstrates an improvement over previous studies that used threshold, machine learning, and deep learning methods. In addition, compared with the SAT (with an accuracy, bias, RMSE,  $R$ , and agreement of 0.89, 0.33 tenths, 2.31 tenths, 0.87, and 83 %, respectively) and CEI (with an accuracy, bias, RMSE,  $R$ , agreement of 0.86,  $-1.58$  tenths, 3.34 tenths, 0.76, and 74 %, respectively), the camera-based imager with the CNN was found to be the most suitable method to replace ground cloud cover observation by humans.

## 1 Introduction

In general, clouds are a well-known natural phenomenon that plays an important role in balancing atmospheric radiation and global heat, the hydrological cycle, and weather and climate changes in the atmosphere–Earth system (Shi et al., 2021; Zhou et al., 2022). Ground cloud cover observation data are particularly important for weather prediction, environmental monitoring, and climate change prediction (Krinitzki et al., 2021). In addition, cloud cover is an important meteorological factor for solar-energy-related research fields; aviation operation-related businesses; and monsoon, El Niño, and La Niña studies based on ocean observations (Taravat et al., 2014). Ground cloud cover estimation is currently being automated with instrumental observation; however, thus far, it has been combined with human-eye observation according to the synoptic observation guidelines of the World Meteorological Organization (WMO, 2021). Human-eye observation may lack consistency depending on the observer's condition or observation period and is performed at a low frequency temporally (Kim et al., 2021b). Therefore, automatic observations are essential to reduce the uncertainty in cloud observations and increase periodicity. However, clouds have different optical properties according to their shape, type, thickness, and height (Wang et al., 2020); thus, instrument-based cloud detection and cloud cover estimation on the ground remain challenging.

Remote and automatic observation as well as estimation of cloud cover on the ground can be achieved using meteorological satellites (SATs), ceilometers (CEIs), and camera-based imagers. Meteorological SATs have the advantage of obtaining observational data over a wide spatial range and at dense temporal intervals. However, the uncertainty of cloud detection (Kim et al., 2018; Zhang et al., 2018) and bias due

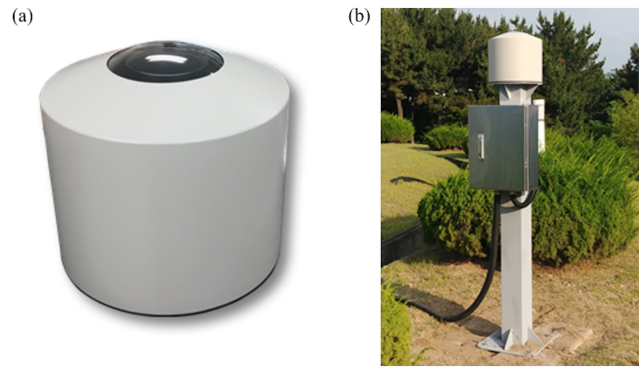
to geometric distortion are large, depending on the height of the cloud (Sunil et al., 2021). In the case of a CEI, a narrow-width beam is emitted vertically, clouds are detected from the returned signal strength, and cloud cover is estimated by weighting the previously detected cloud information (Kim et al., 2021b). Therefore, an incorrectly estimated cloud cover can be obtained even if the cloud does not fall within the beam width range of the CEI or if it is not detected. Nevertheless, it is used at several weather stations owing to the advantage of “automatic observation”. In the case of camera-based imagers, cloud cover can be estimated using the color information in an image captured from a sky-dome image that is similar to human-eye observations (Kim and Cha, 2020; Kim et al., 2016). Imagers are widely used to estimate cloud cover, and the estimation accuracy is higher than that of other remote observations (Alonso-Montesinos, 2020; Kim and Cha, 2020).

Cloud cover estimation using ground-based imagers can be performed using traditional methods, machine learning (ML), and deep learning (DL). Traditional methods estimate the cloud cover by setting a constant (or variable) value for the ratio or difference in red, green, and blue (RGB) color in the image as a threshold and distinguishing between cloud and sky (non-cloud) pixels (Shi et al., 2021; Wang et al., 2020). However, empirical methods do not adequately distinguish between the sky and clouds under various atmospheric and light source conditions (Kim and Cha, 2020; Kim et al., 2015, 2016; Yang et al., 2015). By contrast, ML and DL methods have achieved relatively highly accurate cloud cover estimation results, addressing the limitations of empirical methods through image learning (Kim et al., 2021b; Xie et al., 2020). In particular, DL methods can learn images deeper than ML methods; therefore, they can hierarchically extract various contextual information and global features from images to statistically estimate the cloud cover (Wang et al., 2020). Various algorithms are used for image learning, with the convolutional neural network (CNN) being the most commonly used. A CNN can design a model with high accuracy by setting the hyperparameters, such as the layer depth, feature size, and activation function, according to the characteristics of the input data. The aim of this study was to estimate cloud cover with high accuracy using images from a camera-based imager and a CNN as a potential alternative to human-eye observation on the ground. The estimated cloud cover was evaluated by comparing cloud cover data observed from staffed weather stations, meteorological SATs, and CEIs.

## 2 Research data and methods

### 2.1 Imager information and input dataset

The camera-based imager used in this study was an automatic cloud observation system (ACOS) developed by the



**Figure 1.** Appearance of the automatic cloud observation system (ACOS) (a) and installation environment (b) (Kim and Cha, 2020).

Korea Meteorological Administration (KMA), National Institute of Meteorological Sciences (NIMS), and A&D System Co., Ltd., as shown in Fig. 1. The ACOS is installed in the Daejeon Regional Office of Meteorology (36.37° N, 127.37° E) and continuously captures the sky dome over a 180° field of view (FOV) (fisheye lens) for 24 h at 10 min intervals and saves it as images. As summarized in Table 1, the ISO and exposure time were automatically set such that the objects (clouds) could be continuously captured during the day and night (Kim et al., 2021b). In addition, a heating and ventilation device was installed such that the clouds can be captured without artificially managing the ACOS. The image data used were captured at 1 h intervals and on time from 2 January 2019 to 9 December 2020, matching the typical human-eye observation interval. According to the KMA surface weather observation guidelines, cloud cover should be observed every hour (KMA, 2022). However, a slight difference in observation time may occur, depending on the observer. In this study, it was assumed that the time difference between the images observed and the human observations would not be significant. Instances of equipment maintenance, power outages, or unfavorable weather conditions, such as snow cover or fog preventing the capture of images or making it impossible to visually identify cloud cover, were excluded from the image data. In addition, KMA cloud cover observations were performed at 1 h intervals during the day and at 1–3 h intervals at night (Kim and Cha, 2020). Therefore, 5607 and 4742 images were collected in 2019 and 2020, respectively, excluding the unavoidable cases.

In this study, the 2019 dataset was used for training and validating the CNN model, whereas the 2020 dataset was used for testing. For training and validating the CNN model, 500 data points were randomly sampled with a replacement for each cloud cover class in 2019, and 5500 data points were randomly selected at a ratio of 8 : 2 to form training (4400 cases, including duplicate data) and validation (897 cases, excluding duplicate data) datasets. The frequency distribution by class of observed cloud cover data in 2019 was as high as approximately 61 % in the 0-tenth class (ap-

**Table 1.** Detailed automatic cloud observation system (ACOS) specifications.

Function	Description
Size	264 mm ( $L$ ) $\times$ 264 mm ( $W$ ) $\times$ 250 mm ( $H$ ), 6.5 kg
Pixels	2432 $\times$ 2432
Focal length	8 mm, 180° fisheye lens
Sensor	CMOS
Aperture	F8 (daytime) $\sim$ F11 (nighttime)
Shutter speeds	1/1000 s (daytime) $\sim$ 5 s (nighttime)
ISO	100 (daytime) $\sim$ 25 600 (nighttime)
Observation periods	24 h operation, hourly observation for 10 min
Additional features	24 h automatic heating (below $-2^\circ$ ) and ventilation

proximately 36 %) and 10-tenth class (approximately 26 %), and the remaining 1–9-tenth class exhibited a low-frequency distribution of approximately 39 % (minimum at 1-tenth class: approximately 2 %, maximum at 9-tenth class: approximately 8 %). Therefore, when training all the data from 2019, the model can overfit for the 0-tenth and 10-tenth classes. To prevent the potential overfitting that can occur in specific classes, we employed random sampling with replacement, which limits the number of images for each cloud cover class. This approach ensures that the model is designed and trained such that there is sufficient weight update in each layer of the CNN for classes with fewer cases (Park et al., 2022).

The ACOS captures a sky dome similar to human-eye observation and saves it as a two-dimensional image. However, images captured with a fisheye lens are distorted because the size of the objects placed at the edge of the image is relatively smaller than that at the center of the image (Lothon et al., 2019). Therefore, we performed an orthogonal projection distortion correction for the relative sizes of the objects in the image (Kim et al., 2021b). In addition, because the FOV of the imager is 180°, the horizontal plane is permanently shielded by surrounding objects (buildings, equipment, and trees) (Kim et al., 2015, 2016). Therefore, only the pixel data within a FOV of 160° (zenith angle of 80°) were used in this study. In addition, the image produced by the imager was converted into 128  $\times$  128 pixels and used for training, validating, and testing the CNN model, thus ensuring the estimation of cloud cover even in a resource-constrained DL environment.

## 2.2 Verification dataset

Traditional cloud cover observation estimates the amount of cloud cover in the sky by observing visible clouds from the ground (Spänkuch et al., 2022; WMO, 2021). In other words, by observing clouds in various directions of the sky dome through the human eye, the cloud cover is determined as a tenth of 0 to 10 by comprehensively estimating the amount of covered cloud using human cognitive abilities and previously learned memories. Therefore, in this study, the accu-

racy of the cloud cover estimated by the CNN was evaluated by considering the human-eye observation (OBS) cloud cover as the true value. In addition, to determine the suitability of camera-based ground cloud cover estimation, its estimation performance was compared with the cloud cover estimation performance of meteorological SAT and CEI. We used accuracy, bias, root mean square error (RMSE), and correlation coefficient ( $R$ ) for a comparative analysis of the data using Eqs. (1)–(4).

$$\text{Accuracy} = \frac{\text{TP} + \text{TN}}{\text{TP} + \text{TN} + \text{FP} + \text{FN}} \quad (1)$$

$$\text{bias} = \frac{\sum (M - O)}{N} \quad (2)$$

$$\text{RMSE} = \sqrt{\frac{\sum (M - O)^2}{N}} \quad (3)$$

$$R = \frac{\sum (M - \bar{M})(O - \bar{O})}{\sqrt{\sum (M - \bar{M})^2} \sqrt{\sum (O - \bar{O})^2}}, \quad (4)$$

where TP, TN, FP, and FN denote the number of true positives, true negatives, false positives, and false negatives, respectively;  $O$  denotes the observed cloud cover;  $M$  denotes the estimated cloud cover (CNN, SAT, or CEI); and  $N$  denotes the number of data.

For the meteorological SAT, cloud cover data from GeoKOMPSAT-2A (GK-2A), a geostationary SAT of the KMA National Meteorological Satellite Center (NMSC), were used. The cloud cover of GK-2A was estimated using a cloud fraction within a radius of 5 km after converting the Cartesian coordinates of the grid (resolution 2 km  $\times$  2 km) around the reference grid point into spherical coordinates. In this case, considering the cloud height, zenith angle, and cloud cover observed on the ground, an approximation of the cloud cover on the ground was determined using a regression equation to which weights under each condition were applied (NMSC, 2021). Because these data are provided as integer values from 0 % to 100 %, they were converted into tenths from 0 to 10, as listed in Table 2. The CEI (Vaisala CL31) used in this study uses cloud detection information

sampled four times per minute to estimate the cloud cover by weighting the information for 30 min. As the estimated cloud cover was recorded in oktas, it was converted into tenths, as summarized in Table 2. In the case of 2 and 6 oktas, they were converted into tenths (2 or 3 tenths and 7 or 8 tenths), with the smallest difference from the observed cloud cover at the same observation time (if the observed cloud cover was 3 tenths, the 2 oktas were converted into 3 tenths). The time resolution of the two datasets was determined at the same 1 h interval as the observation interval, and missing data were excluded from the test dataset.

### 3 CNN model architecture

A CNN is a DL method used in various computer vision applications, including image classification and object detection. For tree-, vector-, and regularization-based ML methods, the models are trained using predefined features (Kim et al., 2022a, b, c). Therefore, when using an ML method, it is necessary to understand the chromatic statistical characteristics of the input data before constructing a model (Kim et al., 2021b). By contrast, DL methods, such as CNNs, extract spatial characteristics from the input image while iteratively performing forward and backward propagation, enabling the model to learn the features of the image (Ye et al., 2017). This process can enable the design of a highly accurate model by setting hyperparameters such as layer depth, feature map size, activation function, and learning rate (Wang et al., 2020). In this study, the CNN model comprised an input layer, seven convolutional layers (Conv), six pooling layers, three fully connected layers (Fc), and an output layer, as shown in Fig. 2, and the hyperparameters of each layer were set as follows.

The image is inputted into the input layer as  $128 \times 128 \times 3$  three-dimensional tensor data comprising  $128 \times 128$  RGB channels. At each step of the convolutional layer, several  $n \times n$  filters (kernels) scan the input data and extract their convolved feature maps. The filter of the convolutional layer has a weight associated with a specific area of the image and recognizes a specific pattern or structure of the image by learning the weight (Yao et al., 2021). In this study, a  $3 \times 3$  filter was used, and zero padding was used to maintain the feature map characteristics of multiples of 2. At each stage of the pooling layer, each feature map is downsampled to a size of  $1/n$  using an  $n \times n$  size filter to reduce the image size. The pooling process is used to abstract images and improve the generalizability of the model (Zhou et al., 2021). In addition, this process avoids overfitting, and the prediction accuracy is improved because fewer unnecessary details are learned in addition to the main features. Max pooling, which extracts the maximum value within a  $2 \times 2$  filter, is used (Geng et al., 2020). In the fully connected layer, the feature map output from the last convolutional layer is input and flattened to one dimension to estimate the cloud cover using a mul-

tilayer perceptron neural network. In this process, the first fully connected layer randomly reduces 10 % of the neurons (dropout = 0.1) to avoid overfitting (Srivastava et al., 2014).

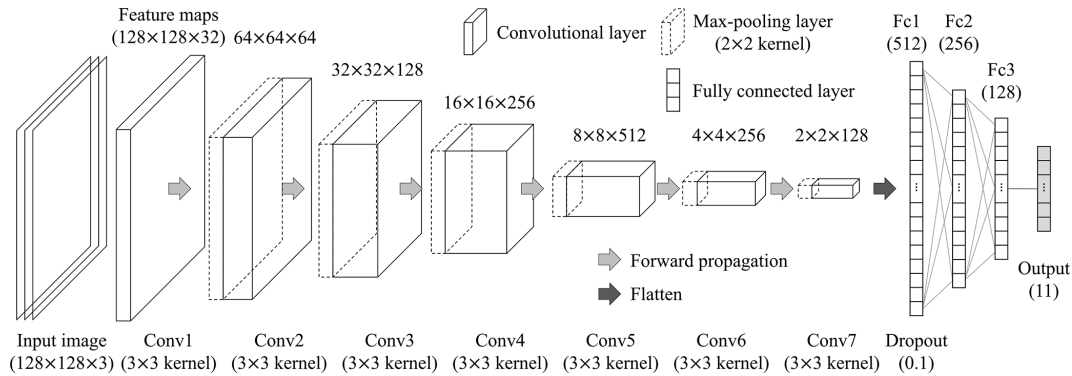
An activation function exists between the convolutional, pooling, and fully connected layers, which converts the input signal such that it has nonlinear characteristics before being transmitted to the output signal. Because of the nature of the CNN model, as the convolutional layer deepens, the problem of exploding or vanishing weights may occur. We update the weights using a leaky rectified linear unit (LeakyReLU = 0.1) activation function to address these two problems (Yuen et al., 2021). In the last fully connected layer, the probability distribution of the 11 cloud cover classes is obtained using the softmax activation function, and the class with the highest probability is classified as a cloud cover.

In the output layer, the error between the output value and correct answer (label) is minimized using gradient descent while adjusting the weights of each layer, whereas forward and backward propagation is repeated. We used adaptive moment estimation (ADAM) for the gradient descent. ADAM is a combination of momentum optimization and root mean square propagation algorithms and is an optimization algorithm with excellent performance (Onishi and Sugiyama, 2017). The learning rate of the CNN model was set to 0.001, and the number of data points used for learning once per epoch (batch size) was set to 256. The training and validation results of the CNN model are evaluated in terms of categorical loss (mean square error (MSE)) and accuracy by epoch, as shown in Fig. 3. If the validation loss of the learned result did not improve compared to the loss before the fifth epoch, the weight of the epoch with the lowest previous loss was selected to determine the optimal CNN model. Consequently, the estimation performance of the model with the weights updated 70 times (70 epochs) was the best; that is, compared with the OBS cloud cover, the model achieved a bias, RMSE, and  $R$  of  $-0.04$  tenths, 0.67 tenths, and 0.98 on the training dataset and  $-0.03$  tenths, 1.00 tenth, and 0.96 on the validation dataset, respectively. This result is an improvement compared to the cloud cover estimation performance on the training (bias, RMSE, and  $R$  of 0.07 tenths, 1.05 tenths, and 0.96, respectively) and validation (bias, RMSE, and  $R$  of 0.06 tenths, 1.51 tenths, and 0.93, respectively) datasets achieved by the supervised-learning-based support vector regression method presented by Kim et al. (2021b).

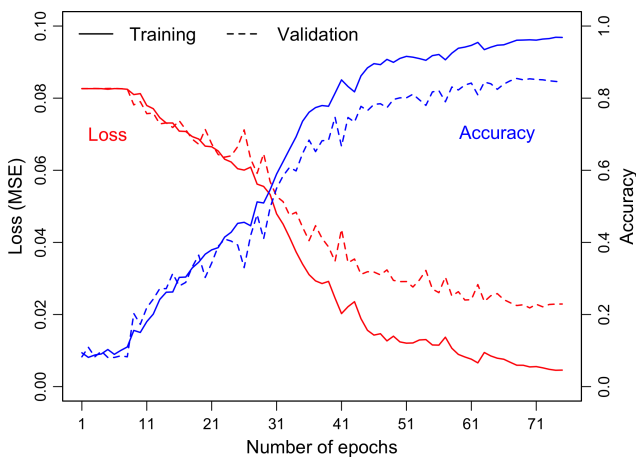
Clouds exhibit varying colors at different times of the day, including daytime, nighttime, and sunrise/sunset time; therefore, the threshold method (traditional method), which uses the ratio or difference of RGB brightness, cannot effectively distinguish the clouds from the sky. Using the threshold method, Kim et al. (2016), Shields et al. (2019), and Kim and Cha (2020) estimated the cloud cover by dividing the daytime and nighttime algorithms. In this case, estimated cloud cover at sunrise and sunset time may appear discontinuous, and the degree of uncertainty is large. Furthermore, depending on the shape, thickness, and height, the clouds in

**Table 2.** Tenth cloud cover conversion table of satellite (%) and ceilometer (okta) cloud cover.

%	≤ 5	5–15	15–25	25–35	35–45	45–55	55–65	65–75	75–85	85–95	> 95
Okta	0	1	2	2	3	4	5	6	6	7	8
Tenth	0	1	2	3	4	5	6	7	8	9	10



**Figure 2.** Architecture of CNN model for cloud cover classification.



**Figure 3.** Categorical loss and accuracy by epoch for training and validation datasets.

**Table 3.** Seasonal accuracy, bias, RMSE, and *R* of estimated (CNN) cloud cover for the test dataset.

Season	<i>N</i>	Accuracy	Bias	RMSE	<i>R</i>
Winter	1029	0.94	−0.26	1.38	0.95
Spring	1448	0.94	−0.02	1.53	0.93
Summer	1186	0.93	−0.13	1.31	0.91
Fall	1079	0.93	−0.16	1.33	0.95
All season	4742	0.92	−0.13	1.40	0.95

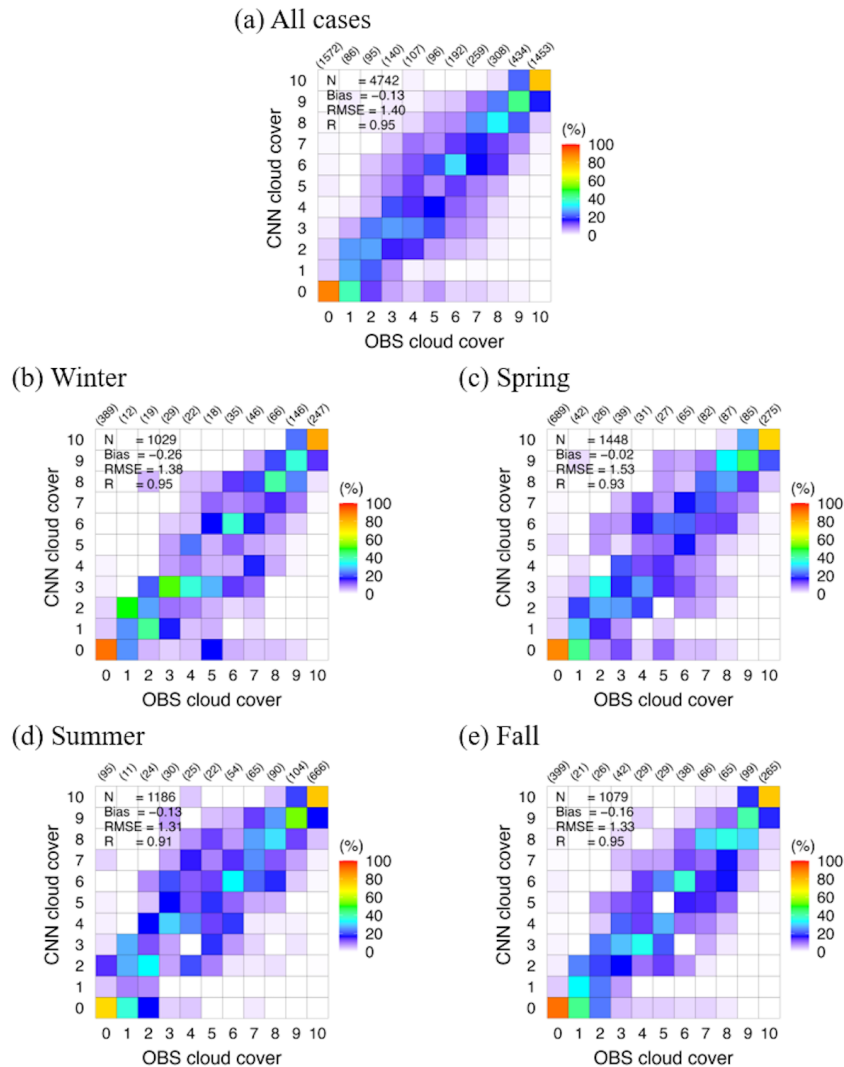
the image can appear dark, bright, or transparent. Therefore, it is necessary to distinguish the sky and clouds using the spatial characteristics of the image. However, Kim et al. (2021b) discovered that an ML method that learns using the statisti-

cal characteristics (mean, kurtosis, skewness, quantile, etc.) of the RGB color in the image can reflect the nonlinear visual characteristics effectively but not the spatial characteristics. Therefore, a DL method capable of accurately reflecting the visual and spatial characteristics of an image, such as the one utilized in this study, is suitable for estimating cloud cover for a sky dome. In this study, more data were used for training each cloud cover class through random sampling with a replacement than those used by Xie et al. (2020) and Ye et al. (2022). Furthermore, using DL supervised learning, the ability to extract image features was further improved by using deeper convolutional layers compared with Onishi and Sugiyama (2017).

## 4 Results

### 4.1 Evaluation of the CNN model on the test dataset

The CNN and OBS cloud covers estimated using the test dataset are shown as density heatmap plots for all cases and seasonal cases in Fig. 4. The column in each plot indicates the ratio (%) of the cloud cover estimated by the CNN to those by OBS; that is, a higher frequency in the diagonal one-to-one grids results in a higher agreement between the OBS and CNN cloud covers. The Korean Peninsula shows various distributions and visually different characteristics of cloud cover, owing to the influence of seasonal air masses and geographical characteristics (Kim et al., 2021b). In other words, in winter, the sky is generally clear, and cloud occurrence frequency and cloud height are low, owing to the influence of the Siberian air mass; in summer, the weather is generally cloudy, and cloud occurrence frequency and cloud



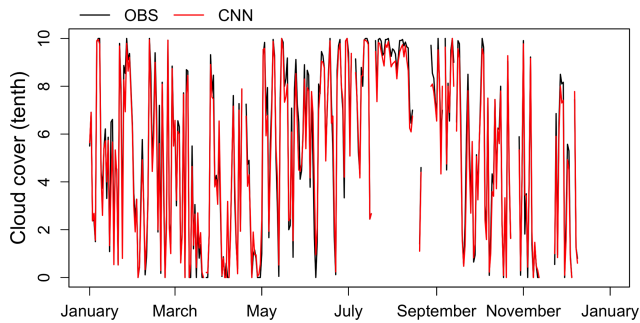
**Figure 4.** Density heatmap plots of observed (OBS) and estimated (CNN) cloud cover for all cases (a) and seasonal cases (b–e) for the test dataset. The number of parentheses in each column denotes the number of OBS cloud cover cases.

height are high, owing to the influence of the Okhotsk Sea and North Pacific air mass; and in spring and fall, the weather is fluid, owing to the influence of the Yangtze River air mass (Kim and Lee, 2018; Kim et al., 2020a, 2021a). In addition, the Korean Peninsula is located in the westerly wind zone, and cumulus heat clouds generated in the West Sea flow inland and develop (Kim et al., 2020b). The distribution of cloud cover by season is shown in Fig. 4b–e, and the test results of the estimated cloud cover are summarized in Table 3. By season, the cloud cover of 0 and 10 tenths had a high agreement, and the spread between 1 and 9 tenths was large; however, it generally exhibited a linear distribution with that of OBS. The CNN cloud cover exhibited a small difference from that of OBS in terms of seasonal mean, with an accuracy of 0.93 or higher and a high correlation coefficient of 0.91 or higher. The evaluation of the CNN cloud cover for all cases exhibited an accuracy, RMSE, and  $R$  of 0.92,

1.40 tenths, and 0.95, respectively, indicating improved estimation performance compared to that described by Kim et al. (2021b) using an ML method (accuracy, RMSE, and  $R$  of 0.88, 1.45 tenths, and 0.93, respectively). Figure 5 shows the daily mean cloud cover of OBS and CNN for the test dataset. The daily mean estimation results also exhibited a bias, RMSE, and  $R$  of  $-0.15$  tenths, 0.63 tenths, and 0.99, respectively, indicating improved results compared to those described by Kim et al. (2021b) (RMSE and  $R$  of 0.92 tenths and 0.96, respectively).

The CNN cloud cover during daytime, nighttime, and sunrise/sunset time is summarized in Table 4. In this study, daytime was defined as a solar zenith angle (SZA) of less than  $80^\circ$ , nighttime was defined as an SZA  $> 100^\circ$ , and sunrise/sunset time was defined as  $100^\circ \geq \text{SZA} > 80^\circ$ . In general, the daytime and nighttime CNN cloud cover did not exhibit a large difference compared with the OBS cloud cover; how-





**Figure 5.** Observed (OBS) and estimated (CNN) daily mean cloud cover time series for the test dataset.

ever, the bias and RMSE were relatively large, and  $R$  was low during sunrise/sunset time. This is because the sky and clouds become reddish or bluish, owing to the sky glow during sunrise/sunset time, making it difficult to distinguish between the sky and clouds (Kim and Cha, 2020; Kim et al., 2016, 2021b). Humans observe the sky dome in three dimensions and easily detect covered clouds within the sky glow based on previous observations; however, there are limitations in the method using only limited information (images) such as this study (Al-Lahham et al., 2020; Krinitskiy et al., 2021). In particular, there were many cases where the CNN cloud cover was smaller than the OBS cloud cover in the 9- and 10-tenth classes during sunrise/sunset time. The mean SZAs of the two classes were  $85.13^\circ$  and  $98.11^\circ$ , respectively, and the error was relatively large when the sun moved completely above and below the horizon (i.e., at 07:00–08:00 and 19:00–20:00 LST, respectively). Moreover, unsupervised-learning-based DL methods (e.g., segmentation and clustering) can generate large errors (Fa et al., 2019; Xie et al., 2020). These methods have the advantage of being able to estimate cloud cover without learning previously accumulated data. However, because there is no correct answer, the estimation performance deteriorates if the sky and clouds are not clearly distinguished, as in these limitations (Zhou et al., 2022). Therefore, optical image correction for a sky dome such as that described by Hasenbalg et al. (2020) will be required to estimate the cloud cover from these images. Moreover, in this study, images acquired at sunrise/sunset time accounted for 16.23 % of all learning datasets. In other words, the images acquired at sunrise/sunset time learned 2 to 3 times fewer images for each cloud cover class than images acquired at daytime and nighttime. The DL method can degrade training performance when the amount of labeled data is limited (Ker et al., 2017). Conversely, the DL method can extract image features with a more complex structure by more complex and deeper learning as the amount of data increases (LeCun et al., 2015). Therefore, it is expected that more robust and accurate results can be obtained if more images are acquired during sunrise/sunset time (Geng et al., 2021; Qian et al., 2022). Nevertheless, this study achieved

**Table 4.** Accuracy, bias, RMSE, and  $R$  for daytime, nighttime, and sunrise/sunset time of estimated cloud cover for the test dataset.

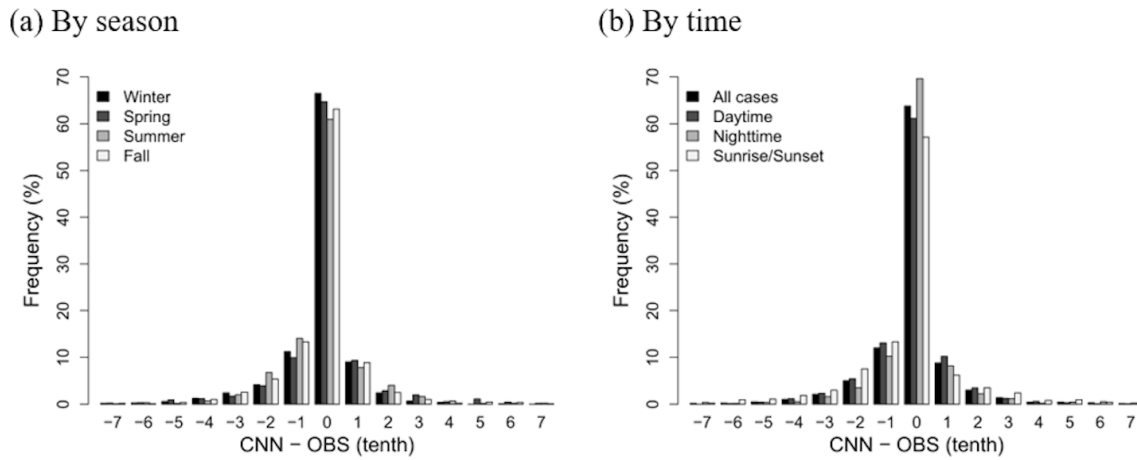
Time	$N$	Accuracy	Bias	RMSE	$R$
Daytime	2163	0.93	−0.12	1.27	0.95
Nighttime	1838	0.93	−0.08	1.39	0.95
Sunrise/sunset	741	0.90	−0.29	1.74	0.92

better cloud cover estimation results compared to those of Kim et al. (2016) for daytime (RMSE and  $R$  of 2.12 tenths and 0.87, respectively) and those of Kim and Cha (2020) for nighttime (RMSE and  $R$  of 1.78 tenths and 0.91, respectively) using the threshold method. In addition, the accuracy and  $R$  by time exhibited improved results than those of Kim et al. (2021b) (accuracy and  $R$  values of 0.89 and 0.95, 0.86 and 0.93, and 0.85 and 0.90 for daytime, nighttime, and sunrise/sunset time, respectively) using the ML method.

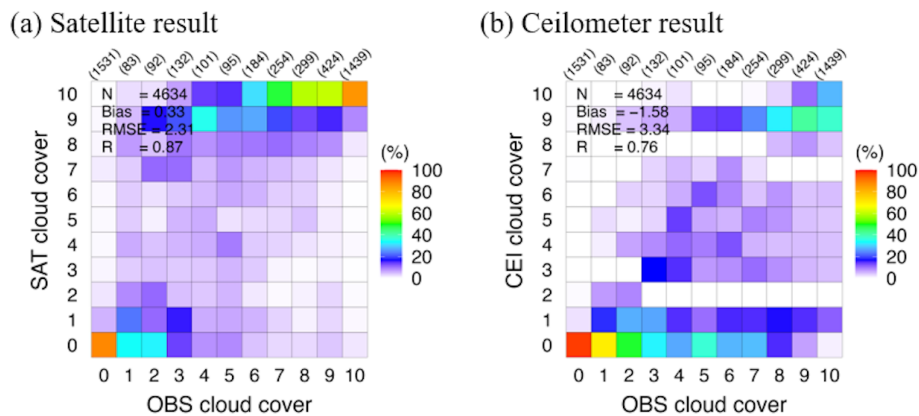
The relative frequency distribution by season and time of cloud cover difference between the OBS and CNN cloud cover is shown in Fig. 6. In this relative frequency distribution, a higher frequency at which the difference is 0 tenths results in a higher agreement between the OBS and CNN cloud cover observations. In general, a comparison between automatic instrument observations and cloud cover observed by humans allows for a difference of two levels (i.e., 2 tenths or 2 oktas) (Ye et al., 2022). Table 5 summarizes the agreement for the 0–3-tenth cloud cover difference between the OBS and CNN. The agreement of the difference between 0 and 2 tenths was greater than approximately 61 %, 83 %, and 91 % for all seasons, and the high agreements were 63.79 %, 84.65 %, and 92.66 % for all cases, respectively. This result is an improvement of approximately 22 %, 5 %, and 3 %, respectively, compared with the agreement for the 0–2-tenth difference reported by Kim et al. (2021b) using the ML method. During nighttime and sunrise/sunset time, the agreement for a 0-tenth difference between the OBS and CNN cloud cover improved significantly to approximately 26 % and 27 %, respectively, whereas that for a 1-tenth difference improved to approximately 8 % and 11 %, respectively. The CNN cloud cover in this study exhibited a high agreement of approximately 93 % with that of OBS within a difference of 2 tenths and exhibited a higher agreement than 80 %–91 % agreements of previous studies using the threshold, ML, and DL methods (Fa et al., 2019; Kim and Cha, 2020; Kim et al., 2015, 2016, 2021b; Krinitskiy and Sinitsyn, 2016; Wang et al., 2021; Xie et al., 2020).

#### 4.2 Verification with satellite and ceilometer data

To determine the suitability of the cloud cover estimation method using the camera-based imager presented in this study, OBS, SAT, and CEI cloud cover data were compared. For comparison, cloud cover data from 4634 cases were used, excluding data with missing SAT or CEI cloud cover in the



**Figure 6.** Relative frequency distributions of differences between observed (OBS) and estimated (CNN) cloud cover by season and time for the test dataset.



**Figure 7.** Density heatmap plots of satellite (SAT) and ceilometer (CEI) cloud covers for the test dataset. The number of parentheses in each column denotes the number of OBS cloud cover cases.

test dataset. A density heatmap plot of the OBS cloud cover and the SAT and CEI cloud covers is shown in Fig. 7. Unlike the density heatmap plot of the CNN cloud cover, the SAT and CEI cloud covers showed overestimation or underestimation of the cloud cover. In other words, the frequencies of OBS and CNN cloud cover were extremely similar in the relative frequency distribution by cloud cover, as shown in Fig. 8, whereas SAT cloud cover had a high frequency in 10 tenths and a low-frequency distribution in other mostly cloudy cases. Conversely, the CEI cloud cover exhibited a low-frequency distribution in the 10 tenths and a high-frequency distribution in partly cloudy cases. The SAT and CEI cloud cover evaluation results are summarized in Table 6. Both remote observation results exhibited low accuracy, large bias, low RMSE, and low  $R$  values and agreements. Although SAT data have several spatial and temporal advantages, large cloud detection errors occur due to the large spatial resolution of  $2\text{ km} \times 2\text{ km}$  and uncertainty in cloud cover estimation based on cloud height (NMSC, 2021;

Zhang et al., 2018). Using a CEI, it is difficult to accurately detect and estimate clouds located in the sky dome by observing only a narrow beam-width area (Utrillas et al., 2022). Therefore, to estimate cloud cover from the ground, the combination of images acquired with a camera-based imager and a CNN is the most suitable and closest method to replace human-eye observation.

## 5 Summary and conclusions

In this study, images captured using a camera-based imager and a CNN were used to estimate 24 h continuous cloud cover from the ground. Data collected over a long period were used to capture various visual clouds and estimate cloud cover. Images were captured by a staffed weather station from 2019 to 2020 at 1 h intervals, matching the time interval typically used for human-eye observations. The 2019 data were used for training and validating the CNN model, whereas the 2020 data were used for testing. The training

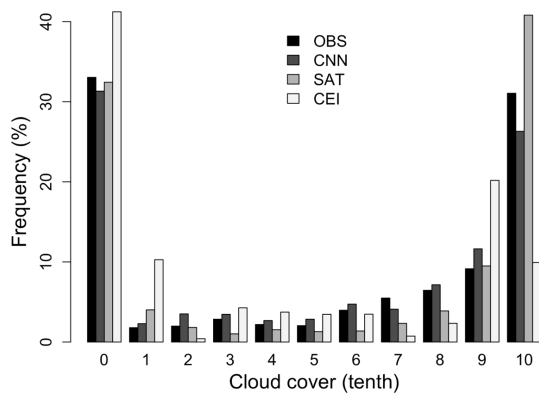


**Table 5.** Agreements of differences (Diff.) between observed (OBS) and estimated (CNN) cloud cover by season and time for the test dataset.

Diff.	Winter	Spring	Summer	Fall	Annual	Daytime	Nighttime	Sunrise/ sunset
±0 tenths	66.47	64.71	60.96	63.11	63.79	61.12	69.64	57.09
±1 tenth	86.78	84.05	82.88	85.36	84.65	84.47	88.08	76.65
±2 tenths	93.39	90.88	93.68	93.23	92.66	93.39	93.80	87.72
±3 tenths	96.50	94.61	97.30	96.85	96.20	96.99	96.52	93.12

**Table 6.** Accuracy, bias, RMSE, *R*, and agreements of satellite and ceilometer for the test dataset. The unit of bias and RMSE is tenths, and agreement for the 0–3-tenth differences is %.

	Accuracy	Bias	RMSE	<i>R</i>	±0 tenths	±1 tenth	±2 tenths	±3 tenths
SAT	0.89	0.33	2.31	0.87	59.09	73.87	82.82	88.78
CEI	0.86	−1.58	3.34	0.76	46.72	66.81	73.54	77.13



**Figure 8.** Relative frequency distribution by cloud cover of observation (OBS), estimation (CNN), satellite (SAT), and ceilometer (CEI) cloud cover for the test dataset.

dataset did not use the entirety of the collected data but used randomly sampled data with replacements for each cloud cover class to organize the dataset. In other words, overfitting of the cloud cover class with a high observation frequency was prevented, and weight was assigned to the class with a low observation frequency. In this study, a novel method was attempted to learn a DL model for cloud cover estimation. Compared to the datasets of previous studies (e.g., Fa et al., 2019; Kim et al., 2021b; Xie et al., 2020; Ye et al., 2022), more images were learned, and long-term estimated data were analyzed. Furthermore, the estimated results were compared with observational data from a staffed weather station and other remote observational data (i.e., from a satellite and ceilometer). Consequently, the cloud cover estimated for the test dataset exhibited an accuracy, RMSE, *R*, and agreement of 0.92, 1.40 tenths, 0.95, and within a ±2-tenth difference of approximately 93 %, respectively, with OBS cloud cover. This result shows improved cloud cover estimation performance compared with that of previous studies using

the threshold, ML, and DL methods. In addition, the camera-based imager with a CNN was found to be the most suitable for cloud cover estimation on the ground compared to the estimation using a SAT and CEI. SAT and CEI remote observations can determine the temporal, spatial, and vertical distributions of clouds; however, their uncertainty is extremely large. A camera-based imager with a CNN, as in this study, is the most suitable method for replacing ground cloud cover observations. Depending on the characteristics of the data to be learned, it is possible to estimate the cloud cover in percent instead of oktas and tenths; accordingly, the time resolution can also be estimated in minutes rather than hourly intervals. This configuration can be fully utilized, even in a limited computer resource environment, using a low-cost fisheye camera-based imager and edge computing. The formation of these dense observation networks and the accumulation of data make it possible to maintain the consistency of meteorological data. Therefore, various observation devices and methods that can replace cloud observation methods that use human-eye observations on the ground should be developed and tested.

*Code availability.* The code for this paper is available from the corresponding author.

*Data availability.* The data for this paper is available from the corresponding author.

*Sample availability.* The samples for this paper are available from the corresponding author.

*Author contributions.* BYK carried out this study and the analysis. The results were discussed with JWC and YHL. BYK developed

the deep learning model code and performed the simulations and visualizations. The manuscript was mainly written by BYK with contributions by JWC and YHL.

*Competing interests.* The contact author has declared that none of the authors has any competing interests.

*Disclaimer.* Publisher's note: Copernicus Publications remains neutral with regard to jurisdictional claims made in the text, published maps, institutional affiliations, or any other geographical representation in this paper. While Copernicus Publications makes every effort to include appropriate place names, the final responsibility lies with the authors.

*Acknowledgements.* This work was funded by the Korea Meteorological Administration Research and Development Program "Research on Weather Modification and Cloud Physics" (grant no. KMA2018-00224).

*Financial support.* This research has been supported by the Korea Meteorological Administration (grant no. KMA2018-00224).

*Review statement.* This paper was edited by Yuanjian Yang and reviewed by two anonymous referees.

## References

- Al-Lahham, A., Theeb, O., Elalem, K., Alshawi, A. T., and Alshebeili, S. A.: Sky imager-based forecast of solar irradiance using machine learning, *Electronics*, 9, 1700, <https://doi.org/10.3390/electronics9101700>, 2020.
- Alonso-Montesinos, J.: Real-time automatic cloud detection using a low-cost sky camera, *Remote Sens.*, 12, 1382, <https://doi.org/10.3390/rs12091382>, 2020.
- Fa, T., Xie, W., Wang, Y., and Xia, Y.: Development of an all-sky imaging system for cloud cover assessment, *Appl. Opt.*, 58, 5516–5524, <https://doi.org/10.1364/AO.58.005516>, 2019.
- Geng, Y. A., Li, Q., Lin, T., Yao, W., Xu, L., Zheng, D., Zhou, X., Zheng, L., Lyu, W., and Zhang, Y.: A deep learning framework for lightning forecasting with multi-source spatiotemporal data, *Q. J. Roy. Meteor. Soc.*, 147, 4048–4062, <https://doi.org/10.1002/qj.4167>, 2021.
- Geng, Z., Zhang, Y., Li, C., Han, Y., Cui, Y., and Yu, B.: Energy optimization and prediction modeling of petrochemical industries: An improved convolutional neural network based on cross-feature, *Energy*, 194, 116851, <https://doi.org/10.1016/j.energy.2019.116851>, 2020.
- Hasenbalg, M., Kuhn, P., Wilbert, S., Nouri, B., and Kazantzidis, A.: Benchmarking of six cloud segmentation algorithms for ground-based all-sky imagers, *Sol. Energy*, 201, 596–614, <https://doi.org/10.1016/j.solener.2020.02.042>, 2020.
- Ker, J., Wang, L., Rao, J., and Lim, T.: Deep learning applications in medical image analysis, *IEEE Access*, 6, 9375–9389, <https://doi.org/10.1109/ACCESS.2017.2788044>, 2017.
- Kim, B. Y. and Cha, J. W.: Cloud observation and cloud cover calculation at nighttime using the Automatic Cloud Observation System (ACOS) package, *Remote Sens.*, 12, 2314, <https://doi.org/10.3390/rs12142314>, 2020.
- Kim, B. Y. and Lee, K. T.: Radiation component calculation and energy budget analysis for the Korean Peninsula region, *Remote Sens.*, 10, 1147, <https://doi.org/10.3390/rs10071147>, 2018.
- Kim, B. Y., Jee, J. B., Jeong, M. J., Zo, I. S., and Lee, K. T.: Estimation of total cloud amount from skyviewer image data, *J. Korean Earth Sci. Soc.*, 36, 330–340, <https://doi.org/10.5467/JKESS.2015.36.4.330>, 2015.
- Kim, B. Y., Jee, J. B., Zo, I. S., and Lee, K. T.: Cloud cover retrieved from skyviewer: A validation with human observations, *Asia-Pac. J. Atmos. Sci.*, 52, 1–10, <https://doi.org/10.1007/s13143-015-0083-4>, 2016.
- Kim, B. Y., Lee, K. T., Jee, J. B., and Zo, I. S.: Retrieval of outgoing longwave radiation at top-of-atmosphere using Himawari-8 AHI data, *Remote Sens. Environ.*, 204, 498–508, <https://doi.org/10.1016/j.rse.2017.10.006>, 2018.
- Kim, B. Y., Cha, J. W., Ko, A. R., Jung, W., and Ha, J. C.: Analysis of the occurrence frequency of seedable clouds on the Korean Peninsula for precipitation enhancement experiments, *Remote Sens.*, 12, 1487, <https://doi.org/10.3390/rs12091487>, 2020a.
- Kim, B. Y., Cha, J. W., Jung, W., and Ko, A. R.: Precipitation enhancement experiments in catchment areas of dams: Evaluation of water resource augmentation and economic benefits, *Remote Sens.*, 12, 3730, <https://doi.org/10.3390/rs12223730>, 2020b.
- Kim, B. Y., Cha, J. W., Chang, K. H., and Lee, C.: Visibility prediction over South Korea based on random forest, *Atmosphere*, 12, 552, <https://doi.org/10.3390/atmos12050552>, 2021a.
- Kim, B.-Y., Cha, J. W., and Chang, K.-H.: Twenty-four-hour cloud cover calculation using a ground-based imager with machine learning, *Atmos. Meas. Tech.*, 14, 6695–6710, <https://doi.org/10.5194/amt-14-6695-2021>, 2021b.
- Kim, B. Y., Cha, J. W., Chang, K. H., and Lee, C.: Estimation of the visibility in Seoul, South Korea, based on particulate matter and weather data, using machine-learning algorithm, *Aerosol Air Qual. Res.*, 22, 220125, <https://doi.org/10.4209/aaqr.220125>, 2022a.
- Kim, B. Y., Lim, Y. K., and Cha, J. W.: Short-term prediction of particulate matter (PM<sub>10</sub> and PM<sub>2.5</sub>) in Seoul, South Korea using tree-based machine learning algorithms, *Atmos. Pollut. Res.*, 13, 101547, <https://doi.org/10.1016/j.apr.2022.101547>, 2022b.
- Kim, B. Y., Belorid, M., and Cha, J. W.: Short-term visibility prediction using tree-based machine learning algorithms and numerical weather prediction data, *Weather Forecast.*, 37, 2263–2274, <https://doi.org/10.1175/WAF-D-22-0053.1>, 2022c.
- KMA: Surface weather observation guidelines, 1–303, <https://data.kma.go.kr> (last access: 7 September 2023), 2022.
- Krinitzkiy, M. A. and Sinitsyn, A. V.: Adaptive algorithm for cloud cover estimation from all-sky images over the sea, *Oceanology*, 56, 315–319, <https://doi.org/10.1134/S0001437016020132>, 2016.
- Krinitzkiy, M., Aleksandrova, M., Verezemskaya, P., Gulev, S., Sinitsyn, A., Kovaleva, N., and Gavrikov, A.: On the generalization ability of data-driven models in the prob-

- lem of total cloud cover retrieval, *Remote Sens.*, 13, 326, <https://doi.org/10.3390/rs13020326>, 2021.
- LeCun, Y., Bengio, Y., and Hinton, G.: Deep learning, *Nature*, 521, 436–444, <https://doi.org/10.1038/nature14539>, 2015.
- Lothon, M., Barnéoud, P., Gabella, O., Lohou, F., Derrien, S., Rondi, S., Chiriaco, M., Bastin, S., Dupont, J.-C., Haeffelin, M., Badosa, J., Pascal, N., and Montoux, N.: ELIFAN, an algorithm for the estimation of cloud cover from sky imagers, *Atmos. Meas. Tech.*, 12, 5519–5534, <https://doi.org/10.5194/amt-12-5519-2019>, 2019.
- NMSC: GK-2A AMI algorithms theoretical basis document – Cloud amount and cloud fraction, 1–22, <https://nmsc.kma.go.kr> (last access: 11 June 2023), 2021.
- Onishi, R. and Sugiyama, D.: Deep convolutional neural network for cloud coverage estimation from snapshot camera images, *Sola*, 13, 235–239, <https://doi.org/10.2151/sola.2017-043>, 2017.
- Park, H. J., Kim, Y., and Kim, H. Y.: Stock market forecasting using a multi-task approach integrating long short-term memory and the random forest framework, *Appl. Soft Comput.*, 114, 108106, <https://doi.org/10.1016/j.asoc.2021.108106>, 2022.
- Qian, J., Liu, H., Qian, L., Bauer, J., Xue, X., Yu, G., He, Q., Zhou, Q., Bi, Y., and Norra, S.: Water quality monitoring and assessment based on cruise monitoring, remote sensing, and deep learning: A case study of Qingcaosha Reservoir, *Front. Environ. Sci.*, 10, 979133, <https://doi.org/10.3389/fenvs.2022.979133>, 2022.
- Shi, C., Zhou, Y., and Qiu, B.: CloudU-Netv2: A cloud segmentation method for ground-based cloud images based on deep learning, *Neural Process. Lett.*, 53, 2715–2728, <https://doi.org/10.1007/s11063-021-10457-2>, 2021.
- Shields, J. E., Burden, A. R., and Karr, M. E.: Atmospheric cloud algorithms for day/night whole sky imagers, *Appl. Opt.*, 58, 7050–7062, <https://doi.org/10.1364/AO.58.007050>, 2019.
- Spänkuch, D., Hellmuth, O., and Görsdorf, U.: What is a cloud? Toward a more precise definition, *B. Am. Meteorol. Soc.*, 103, E1894–E1929, <https://doi.org/10.1175/BAMS-D-21-0032.1>, 2022.
- Srivastava, N., Hinton, G., Krizhevsky, A., Sutskever, I., and Salakhutdinov, R.: Dropout: A simple way to prevent neural networks from overfitting, *J. Mach. Learn. Res.*, 15, 1929–1958, 2014.
- Sunil, S., Padmakumari, B., Pandithurai, G., Patil, R. D., and Naidu, C. V.: Diurnal (24 h) cycle and seasonal variability of cloud fraction retrieved from a Whole Sky Imager over a complex terrain in the Western Ghats and comparison with MODIS, *Atmos. Res.*, 248, 105180, <https://doi.org/10.1016/j.atmosres.2020.105180>, 2021.
- Taravat, A., Del Frate, F., Cornaro, C., and Vergari, S.: Neural networks and support vector machine algorithms for automatic cloud classification of whole-sky ground-based images, *IEEE Geosci. Remote S.*, 12, 666–670, <https://doi.org/10.1109/LGRS.2014.2356616>, 2014.
- Utrillas, M. P., Marín, M. J., Estellés, V., Marcos, C., Freile, M. D., Gómez-Amo, J. L., and Martínez-Lozano, J. A.: Comparison of cloud amounts retrieved with three automatic methods and visual observations, *Atmosphere*, 13, 937, <https://doi.org/10.3390/atmos13060937>, 2022.
- Wang, M., Zhou, S., Yang, Z., and Liu, Z.: Clouda: A ground-based cloud classification method with a convolutional neural network, *J. Atmos. Ocean. Tech.*, 37, 1661–1668, <https://doi.org/10.1175/JTECH-D-19-0189.1>, 2020.
- Wang, Y., Liu, D., Xie, W., Yang, M., Gao, Z., Ling, X., Huang, Y., Li, C., Liu, Y., and Xia, Y.: Day and night clouds detection using a thermal-infrared all-sky-view camera, *Remote Sens.*, 13, 1852, <https://doi.org/10.3390/rs13091852>, 2021.
- WMO: Measurement of meteorological variables, Guide to instruments and methods of observation, Vol. I, <https://library.wmo.int> (last access: 25 June 2023), 2021.
- Xie, W., Liu, D., Yang, M., Chen, S., Wang, B., Wang, Z., Xia, Y., Liu, Y., Wang, Y., and Zhang, C.: SegCloud: a novel cloud image segmentation model using a deep convolutional neural network for ground-based all-sky-view camera observation, *Atmos. Meas. Tech.*, 13, 1953–1961, <https://doi.org/10.5194/amt-13-1953-2020>, 2020.
- Yang, J., Min, Q., Lu, W., Yao, W., Ma, Y., Du, J., Lu, T., and Liu, G.: An automated cloud detection method based on the green channel of total-sky visible images, *Atmos. Meas. Tech.*, 8, 4671–4679, <https://doi.org/10.5194/amt-8-4671-2015>, 2015.
- Yao, S., Xu, Y. P., and Ramezani, E.: Optimal long-term prediction of Taiwan’s transport energy by convolutional neural network and wildebeest herd optimizer, *Energy Rep.*, 7, 218–227, <https://doi.org/10.1016/j.egy.2020.12.034>, 2021.
- Ye, L., Cao, Z., and Xiao, Y.: DeepCloud: Ground-based cloud image categorization using deep convolutional features, *IEEE Trans. Geosci. Remote S.*, 55, 5729–5740, <https://doi.org/10.1109/TGRS.2017.2712809>, 2017.
- Ye, L., Wang, Y., Cao, Z., Yang, Z., and Min, H.: A self training mechanism with scanty and incompletely annotated samples for learning-based cloud detection in whole sky images, *Earth Space Sci.*, 9, e2022, <https://doi.org/10.1029/2022EA002220>, 2022.
- Yuen, B., Hoang, M. T., Dong, X., and Lu, T.: Universal activation function for machine learning, *Sci. Rep.*, 11, 18757, <https://doi.org/10.1038/s41598-021-96723-8>, 2021.
- Zhang, J., Liu, P., Zhang, F., and Song, Q.: CloudNet: Ground-based cloud classification with deep convolutional neural network, *Geophys. Res. Lett.*, 45, 8665–8672, <https://doi.org/10.1029/2018GL077787>, 2018.
- Zhou, X., Feng, J., and Li, Y.: Non-intrusive load decomposition based on CNN–LSTM hybrid deep learning model, *Energy Rep.*, 7, 5762–5771, <https://doi.org/10.1016/j.egy.2021.09.001>, 2021.
- Zhou, Z., Zhang, F., Xiao, H., Wang, F., Hong, X., Wu, K., and Zhang, J.: A novel ground-based cloud image segmentation method by using deep transfer learning, *IEEE Geosci. Remote S.*, 19, 1–5, <https://doi.org/10.1109/LGRS.2021.3072618>, 2022.