



Supplement of

Improved convective cloud differential (CCD) tropospheric ozone from S5P-TROPOMI satellite data using local cloud fields

Swathi Maratt Satheesan et al.

Correspondence to: Swathi Maratt Satheesan (swathi@iup.physik.uni-bremen.de)

The copyright of individual parts of the supplement might differ from the article licence.

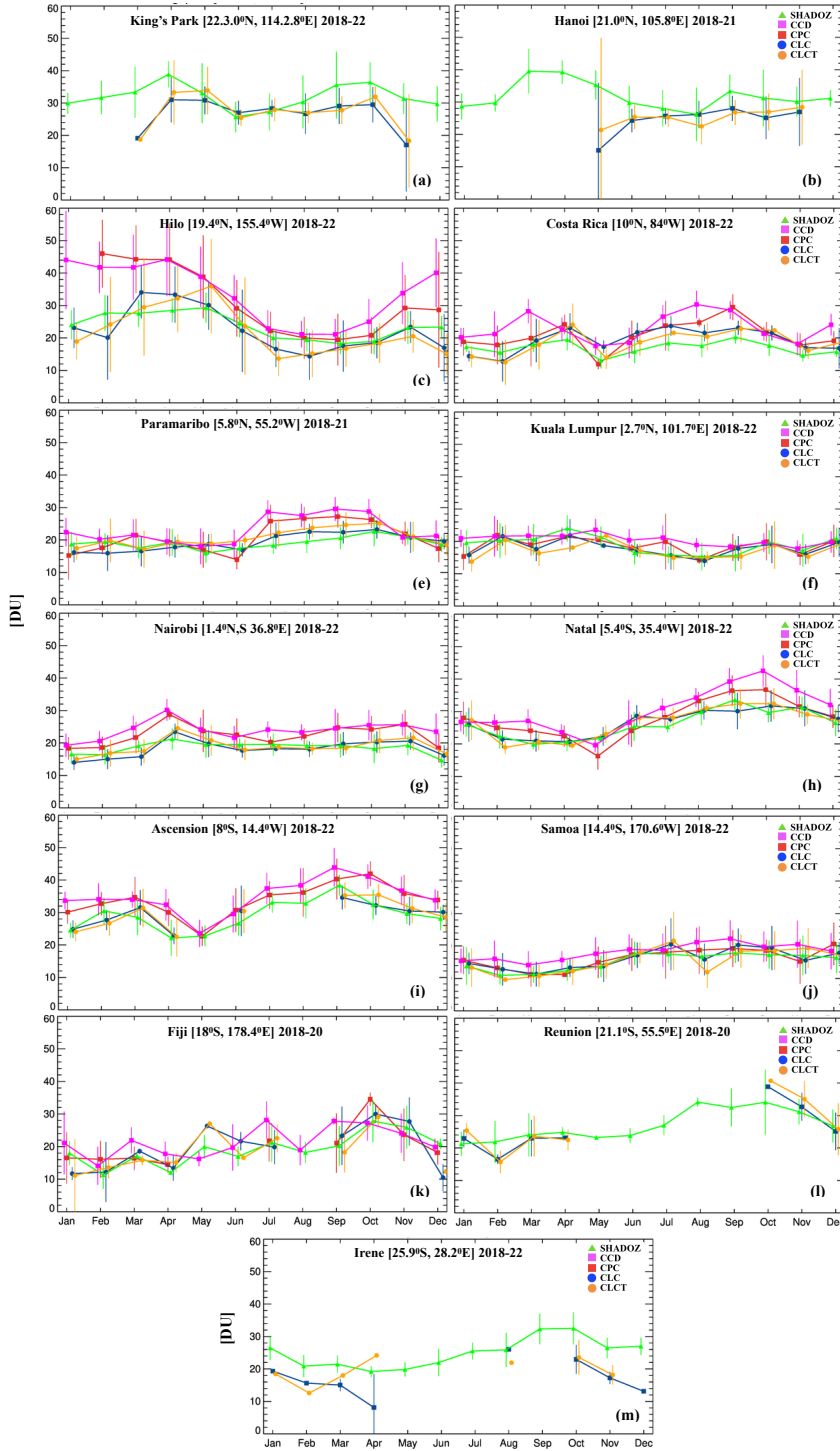


Figure S1. Seasonal daily collocated means of TROPOMI and ozonesonde tropospheric ozone columns up to 270 hPa at thirteen SHADOZ sites from 2018-2022. The green line indicates ozonesondes. The magenta line indicates TCO-CCD-ESA. The red, blue, and yellow lines are CPC, CLC, and CLCT results, respectively. The error bar is the corresponding standard deviation (1σ) of the monthly means. No error bars are shown for stations with only one launch per month. The time period varies with stations according to the data availability.