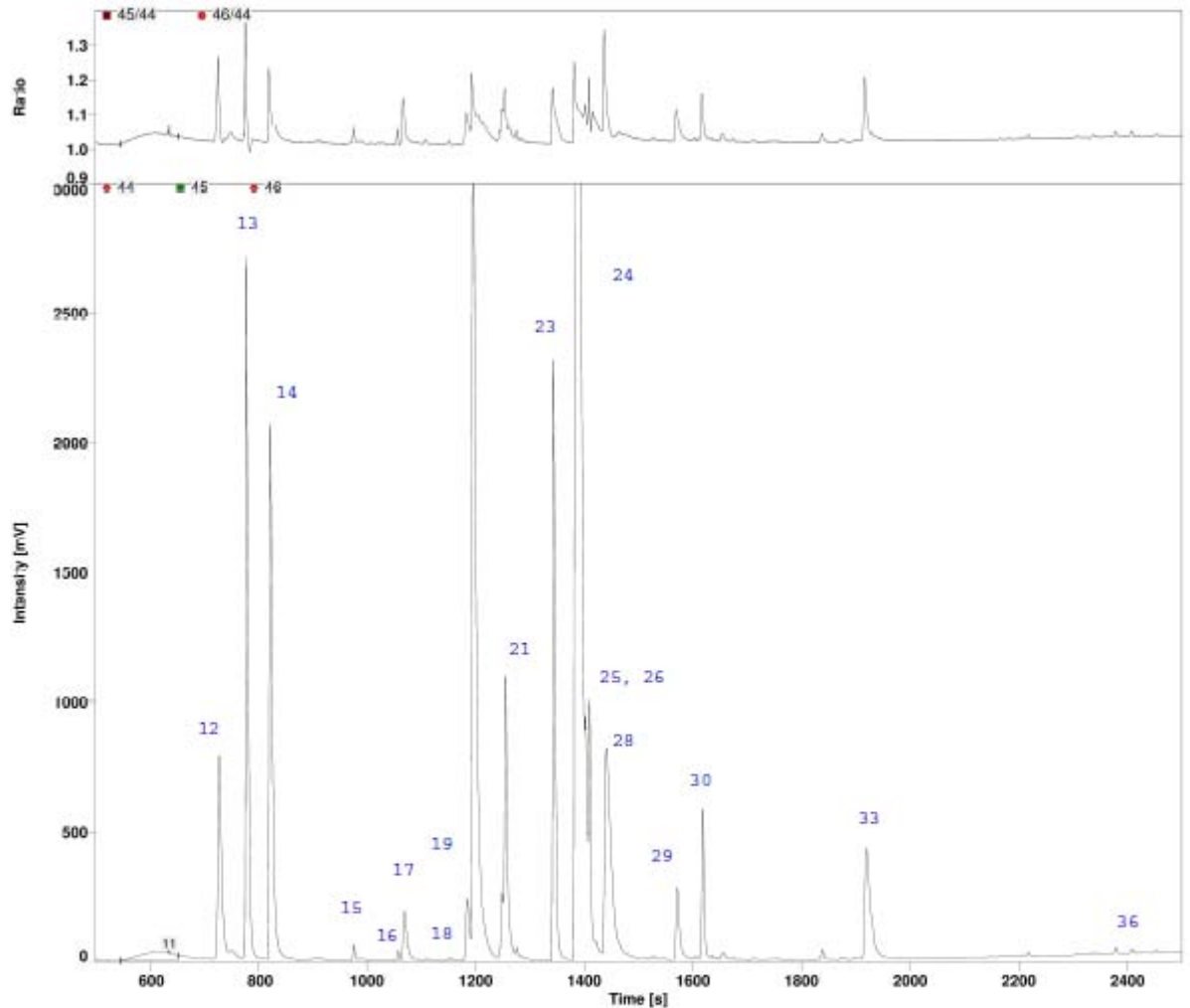


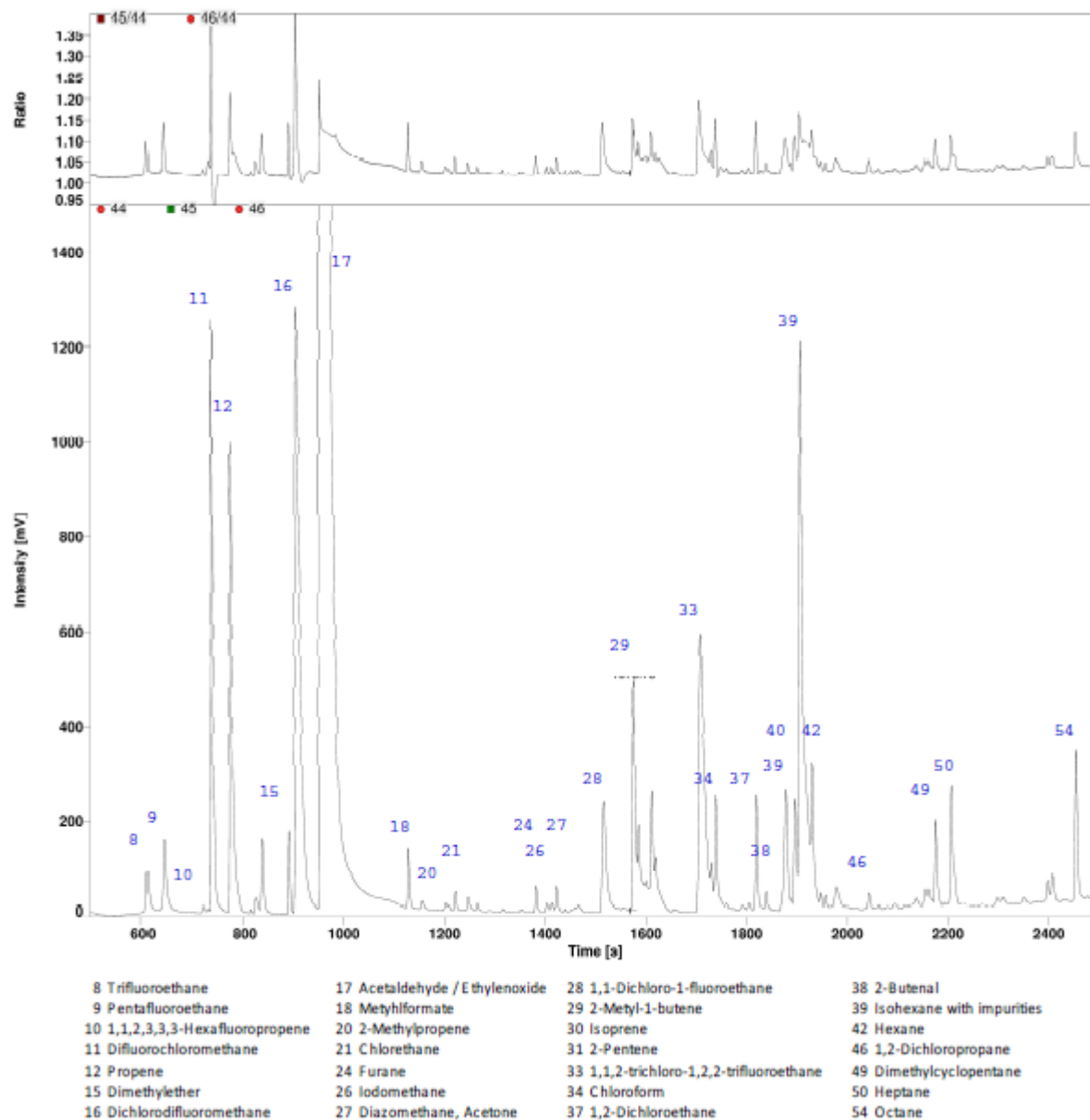
Supplementary Material

The supplementary material shows the IRMS-chromatograms for both fractions of a sample from the coastal site. Both the mass 45 trace and the m/z 54/46 ratios are shown. In addition the spectra of selected organohalogenes from the concurrent quadrupole-MS run are shown, which have been used to assess the peak purity.

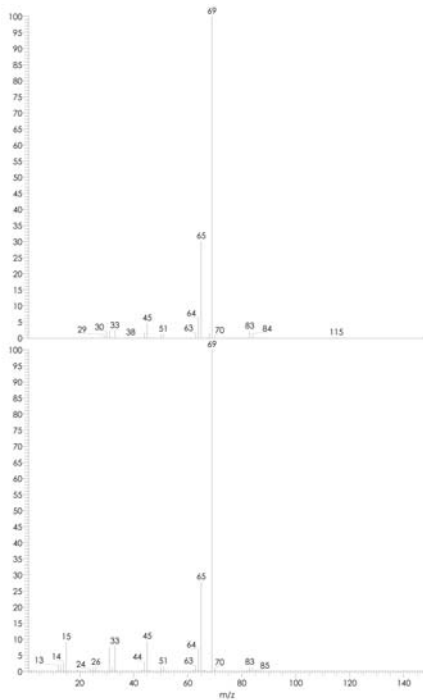


11 Carbonyl sulfide	16 bromomethane	23 2-Propenal	29 Isopentane
12 Norflurane	17 1-chloro-1,1-difluoroethane	24 Propanal	30 Pentane
13 Chloromethane	18 isobutane	25 dichloromethane	31 Cyclopentane
14 Propane	19 2-butene / bromochlorodifluoromethane	26 CS ₂	33 Carbontetrachloride
15 acetaldehyde	21 butane / 1,2-dichloro-1,1,2,2-tetrafluoroethane	28 trichlorofluoromethane	36 bromoform

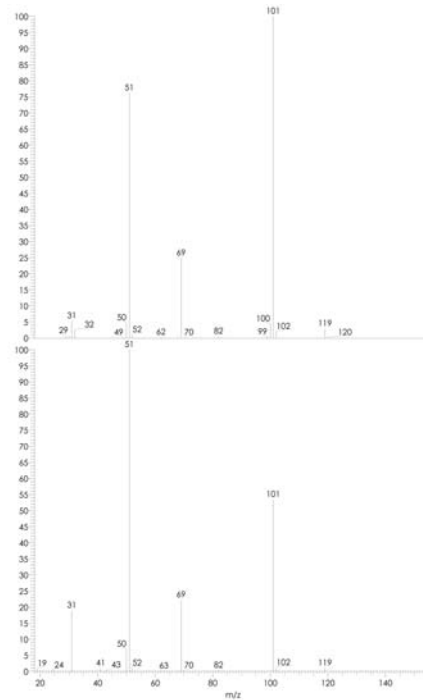
Mass 45 trace and m/z 46/45 ratio of Fraction A of a representative sample from the coastal site



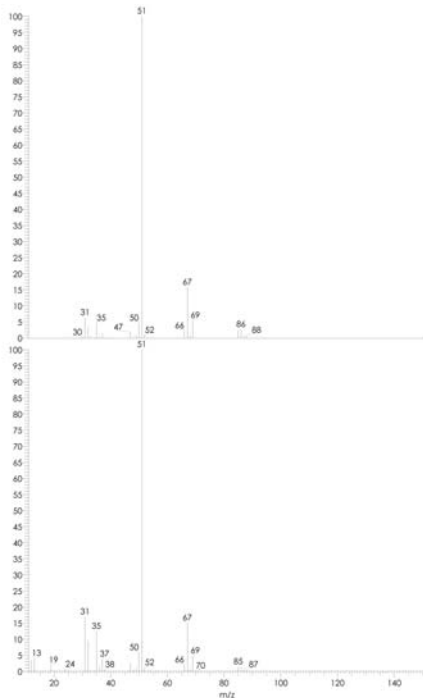
Mass 45 trace and m/z 46/45 ratio of Fraction B of a representative sample from the coastal site



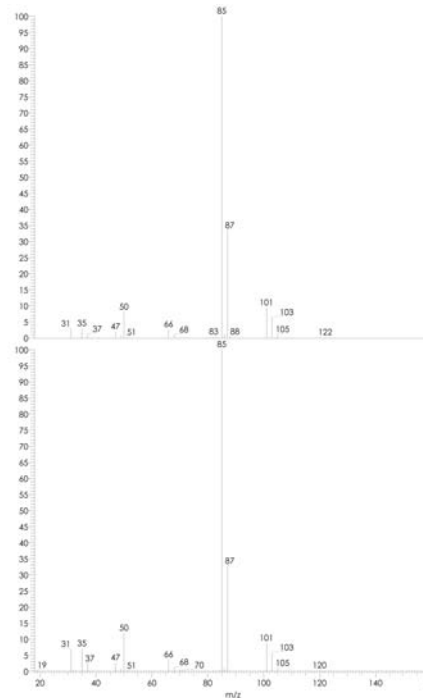
Fraction B; Trifluoroethane



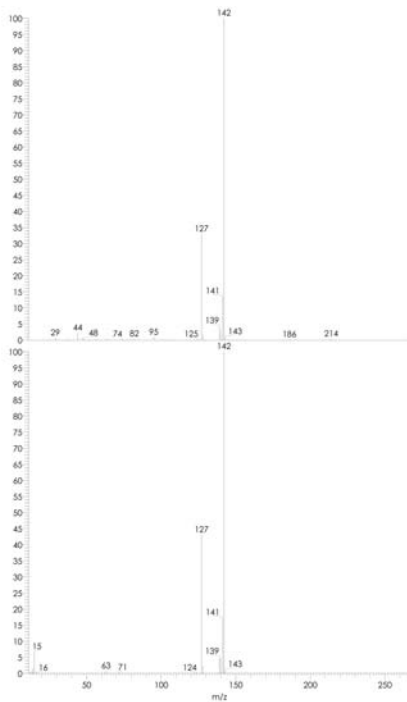
Fraction B: Pentafluoroethane



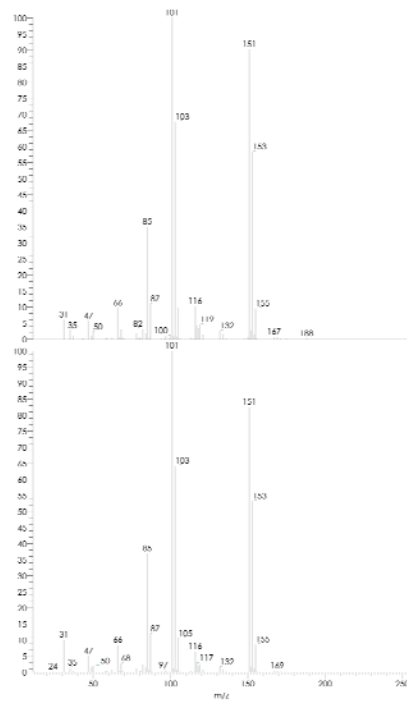
Fraction B: Chlorodifluoromethane



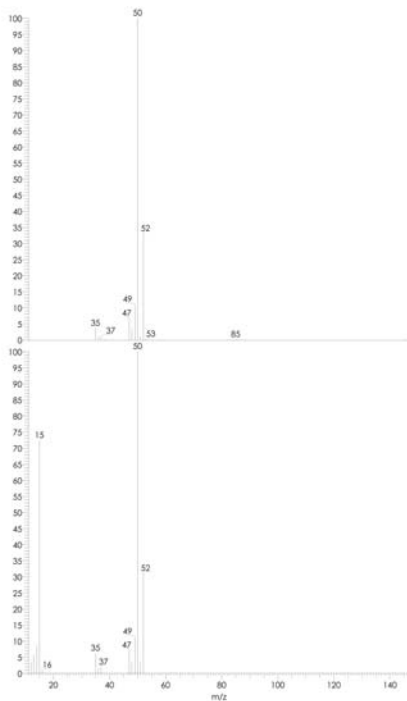
Fraction B: Dichlorodifluoromethane



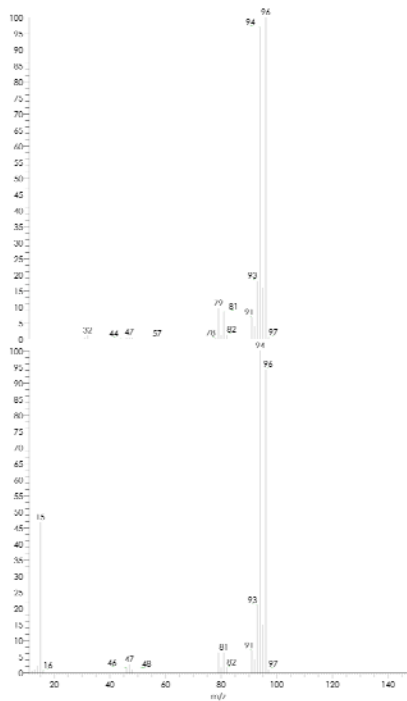
Fraction B: Iodomethane



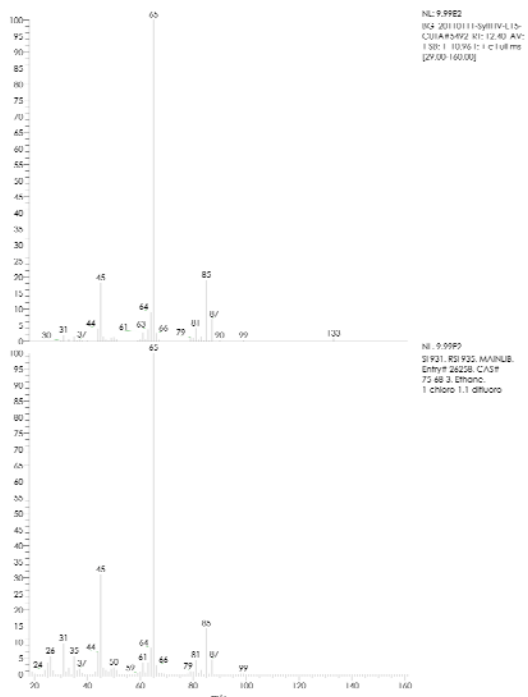
Fraction B: 1,1,2-Trichloro-1,2,2-trifluoroethane



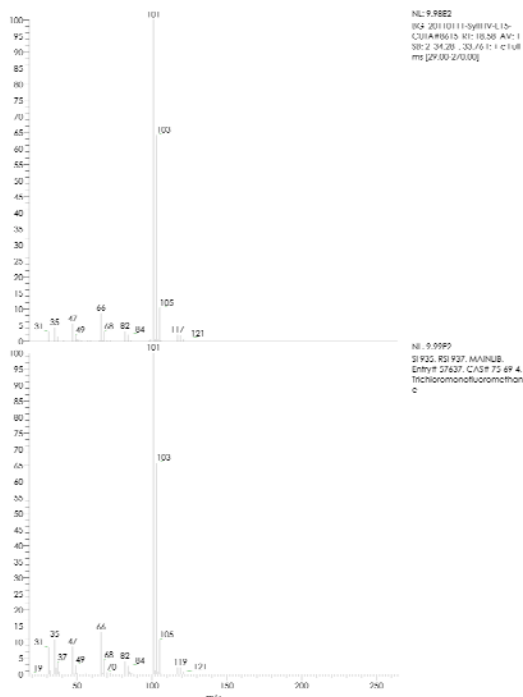
Fraction A: Chloromethane



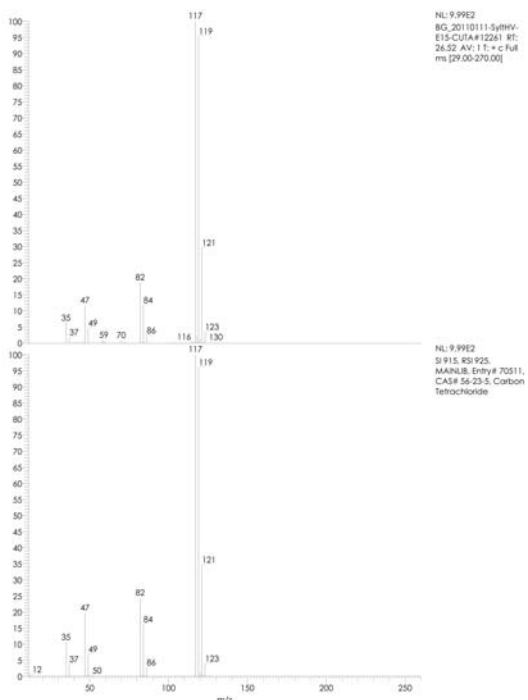
Fraction A: Bromomethane



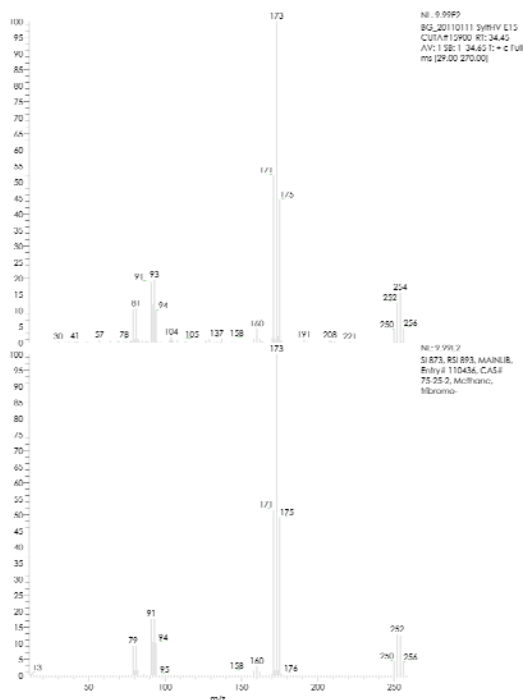
Fraction A: 1-Chloro-1,1-difluoromethane



Fraction A: Trichlorofluoromethane



Fraction A: Tetrachloromethane



Fraction A: Bromoform

