



# Statistical framework for estimating GNSS bias

Juha Vierinen<sup>1</sup>, Anthea J. Coster<sup>1</sup>, William C. Rideout<sup>1</sup>, Philip J. Erickson<sup>1</sup>, and Johannes Norberg<sup>2</sup>

<sup>1</sup>Haystack Observatory, Massachusetts Institute of Technology, Route 40 Westford, 01469 MA, USA

<sup>2</sup>Finnish Meteorological Institute, P.O. Box 503, 00101 Helsinki, Finland

Correspondence to: Juha Vierinen (x@mit.edu)

Received: 26 July 2015 – Published in Atmos. Meas. Tech. Discuss.: 11 September 2015

Revised: 19 January 2016 – Accepted: 1 March 2016 – Published: 30 March 2016

**Abstract.** We present a statistical framework for estimating global navigation satellite system (GNSS) non-ionospheric differential time delay bias. The biases are estimated by examining differences of measured line-integrated electron densities (total electron content: TEC) that are scaled to equivalent vertical integrated densities. The spatiotemporal variability, instrumentation-dependent errors, and errors due to inaccurate ionospheric altitude profile assumptions are modeled as structure functions. These structure functions determine how the TEC differences are weighted in the linear least-squares minimization procedure, which is used to produce the bias estimates. A method for automatic detection and removal of outlier measurements that do not fit into a model of receiver bias is also described. The same statistical framework can be used for a single receiver station, but it also scales to a large global network of receivers. In addition to the Global Positioning System (GPS), the method is also applicable to other dual-frequency GNSS systems, such as GLONASS (Globalnaya Navigazionnaya Sputnikovaya Sistema). The use of the framework is demonstrated in practice through several examples. A specific implementation of the methods presented here is used to compute GPS receiver biases for measurements in the MIT Haystack Madrigal distributed database system. Results of the new algorithm are compared with the current MIT Haystack Observatory MAPGPS (MIT Automated Processing of GPS) bias determination algorithm. The new method is found to produce estimates of receiver bias that have reduced day-to-day variability and more consistent coincident vertical TEC values.

## 1 Introduction

A dual-frequency global navigation satellite system (GNSS) receiver can measure the line-integrated ionospheric electron density between the receiver and the GNSS satellite by observing the transionospheric propagation time difference between two different radio frequencies. Ignoring instrumental effects, this propagation delay difference is directly proportional to the line integral of electron density (Davies, 1965). This is derived, e.g., by Vierinen et al. (2014).

Received GNSS signals are noisy and contain systematic instrumental effects, which result in errors when determining the relative time delay between the two frequencies. The main instrumental effects are frequency-dependent delays that occur in the GNSS transmitter and receiver, arising from dispersive hardware components such as filters, amplifiers, and antennas. Loss of satellite signal can also cause unwanted jumps in the measured relative time delay and cause unwanted nonzero mean errors in the relative time delay measurement. Because line-integrated electron density is determined from this relative time delay, it is important to be able to characterize and estimate these non-ionospheric sources of relative time delay.

The non-ionospheric relative time delay due to hardware is commonly referred to as *bias* in the literature. For the specific case of GPS measurements, the bias is often separated into two parts ordered by the source of delay: satellite bias and receiver bias.

A GNSS measurement of relative propagation time delay difference including the line-integrated electron density effect can be written as

$$m = b + c + \int_S N_e(s) ds + \xi, \quad (1)$$

where  $m$  is the measurement,  $b$  is the receiver bias,  $c$  is the satellite bias,  $S$  is the path between the receiver and the satellite,  $N_e(s)$  is the ionospheric electron density at position  $s$ , and  $\xi$  is the measurement noise. The measurement is scaled to total electron content (TEC) units, i.e.,  $10^{16} \text{m}^{-2}$ , and therefore bias terms also have units of TEC. See Dyrud et al. (2008) and references therein for a more detailed discussion.

For ionospheric research with GNSS receivers that perform measurements of the form shown in Eq. (1), the quantity of interest is usually the three-dimensional electron density function  $N_e(s)$ . However, this quantity is challenging to derive from just GNSS measurements alone, as we only observe one-dimensional line integrals through the ionosphere. The problem is an ill-posed inverse problem called the limited-angle tomography problem (Bust and Mitchell, 2008). The difficulty arises from the fact that line integrals are measured only at a small number of selected viewing angles, and this information is not sufficient to fully determine the unknown electron density distribution without making further assumptions about the unknown measurable  $N_e(s)$ . These assumptions often impose horizontal and vertical smoothness, as well as temporal continuity.

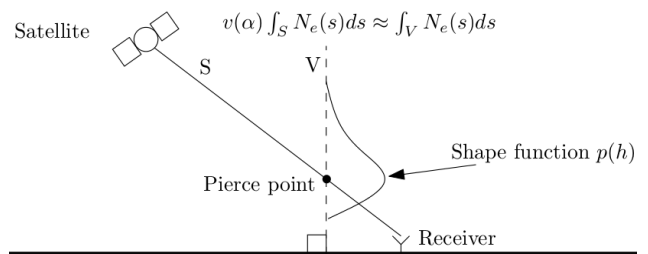
A considerable number of prior studies have attempted to solve this tomographic inversion problem in three dimensions for beacon satellites as well as for GPS satellites (see, e.g., Bust and Mitchell (2008) and references therein). Because of the large computational costs and complexities associated with full tomographic solvers, much of the practical research is done using a reduced quantity called the vertical total electron content (VTEC). As we will describe in more detail below, VTEC in essence results from a reduced parameterization of the ionosphere that is used to simplify the tomography problem and make it more well-posed. VTEC processing is only concerned with the integrated column density, and therefore the measurements are reported in TEC units.

The fundamental assumption for vertical TEC processing is that a slanted line integral measurement of electron density can be converted into an equivalent vertical line integral measurement with a parameterized scaling factor  $v(\alpha)$ :

$$\int_V N_e(s) ds \approx v(\alpha) \int_S N_e(s) ds, \quad (2)$$

where “V” is a vertical path, “S” is the associated slanted path,  $\alpha$  is the elevation angle, and  $v(\alpha)$  is the scaling factor that relates a slanted integral to a vertical line integral.

There are several ways that  $v(\alpha)$  can be derived without resorting to full tomographic reconstruction of the altitude profile shape. Typically, the ionosphere above a certain geographic point is assumed to be described with some vertical shape profile  $p(h)$  multiplied by a scalar  $N_e(h) = Np(h)$ . One example of an often-used shape profile is the Chapman



**Figure 1.** A scaled altitude profile model of the ionosphere assumes that the ionosphere locally has a fixed horizontally stratified altitude profile shape multiplied by a scalar. This makes it possible to relate slanted line integrals to equivalent vertical line integrals using an elevation-dependent scaling factor called the mapping function. The pierce point is located where the ray pierces the peak of the electron density profile.

profile:

$$p(h) = \exp\left(1 - z(h) - e^{-z(h)}\right), \quad (3)$$

where  $z(h) = (h - h_m)/H$ ,  $h_m$  is the peak altitude of the ionosphere, and  $H$  is the scale height (Feltens, 1998). Another example is a slab with exponential top and bottom side ramps as described by Coster et al. (1992) and Mannucci et al. (1998). Figure 1 depicts the geometry and profile shape assumptions in vertical TEC processing.

In more advanced models, the mapping function can be parameterized not only by elevation angle but also by factors such as time of day, geographic location, solar activity, and the azimuth of the observation ray. In practice, this can be done by using a first-principles ionospheric model to derive a more physically motivated mapping function.

Although the vertical TEC assumptions described above are not as flexible as a full tomographic model that attempts to determine the altitude profile, they provide model-to-data fits that are to first order good enough to produce measurements that are useful for studies of the ionosphere. The utility of this simplified model derives from the fact that it results in an overdetermined, well-posed problem that can be inverted with relatively stable results. The main practical difficulties in data reduction using the simplified model are estimating the receiver and satellite biases  $b$  and  $c$ , as well as handling possible model errors.

In this paper, a novel statistical framework for deriving these GNSS measurement biases is described. The method is based on examining large numbers of differences between slanted TEC measurements that are scaled with the mapping function  $v(\alpha)$ . The differences between pairs of measurements are assumed to be Gaussian normal random variables with a variance that is determined by the properties of the two measurements, i.e., spacing in time, geographic distance, and elevation angle. While the Gaussian assumption results in a numerically efficient system of equations, this assumption is also supported by numerical evidence, which suggests that

the distribution of the differences of vertical TEC measurements is close to a zero mean normal random distribution, with the standard deviation increasing when the geographic distance between pierce points is increased, the temporal distance is increased, or the elevation angle of the measurement is decreased.

We will show how this general statistical framework can be used to estimate biases in multiple special cases and finally compare the newly presented method with an existing bias determination scheme within the MIT Haystack MAPGPS (MIT Automated Processing of GPS) algorithm (Rideout and Coster, 2006). We will refer to this new method for bias determination as weighted linear least squares of independent differences (WLLSID).

## 2 Receiver bias estimation

Let us denote Eq. (1) in a more compact form, but now with indexing  $i$  to denote the index of a measurement,  $j$  to denote receiver, and  $k$  to denote the satellite:

$$m_i = b_{j(i)} + c_{k(i)} + n_i + \xi_i. \quad (4)$$

Here  $n_i$  is the line integral of electron density through the ionosphere for measurement  $i$ . The receiver and satellite index associated with measurement  $i$  is given by  $j(i)$  and  $k(i)$ . Receiver noise is represented with  $\xi_i$ .

Now consider subtracting slanted TEC measurements  $i$  and  $i'$ , which are scaled with corresponding mapping function values  $v_i$  and  $v_{i'}$ , which convert slanted TEC to equivalent vertical TEC. In this analysis, it does not matter if these measurements are associated with the same receiver or the same satellite, or even if they occur at the same time.

$$v_i m_i - v_{i'} m_{i'} = (v_i n_i - v_{i'} n_{i'}) + v_i b_{j(i)} - v_{i'} b_{j(i')} + v_i c_{k(i)} - v_{i'} c_{k(i')} + v_i \xi_i - v_{i'} \xi_{i'} \quad (5)$$

This type of a difference equation has several benefits. If measurements  $i$  and  $i'$  are performed at a time close to each other  $t_i \approx t_{i'}$  and have closely located pierce points  $x_i \approx x_{i'}$ , then we can make the assumption that  $v_i n_i \approx v_{i'} n_{i'}$ , i.e., that the vertical TEC is similar.

We can statistically model this similarity by assuming that the difference of equivalent vertical line-integrated electron content between two measurements is a normally distributed random variable with variance

$$v_i n_i - v_{i'} n_{i'} = \tilde{\xi}_{i,i'} \sim N(0, S_{i,i'}), \quad (6)$$

where  $S_{i,i'}$  is the structure function that indicates what we assume to be the variance of the difference of the two measurements  $i$  and  $i'$ . This structure function would be our best guess of how different we expect these two measurements to be.

We assume the structure function depends on the following factors: (1) geographic distance between pierce points

$d_{i,i'} = |x_i - x_{i'}|$ , (2) difference in time between when the measurements were made  $\tau_{i,i'} = |t_i - t_{i'}|$ , (3) receiver noise of both measurements  $\xi_i + \xi_{i'}$ , and (4) modeling errors that are dependent on elevation angles  $\alpha_i$  and  $\alpha_{i'}$  of the measurements. The modeling errors in (4) are caused by inaccuracies in the assumption that we can scale a slanted measurement into an equivalent vertical measurement.

The following subsections describe the structure function behaviors for each dependent variable.

### 2.1 Geographic distance

In order to model the variability of electron density as a function of geographic location, we assume the difference between two measurements to be a random variable:

$$v_i n_i - v_{i'} n_{i'} \sim N(0, D(d_{i,i'})), \quad (7)$$

where in this work we use  $\sqrt{D(d)} = 0.5d$  in units of (TECu/100 km). This implies that we assume the standard deviation of difference of two vertical TEC measurements to grow at a rate of 0.5 TEC units per 100 km of spacing between pierce points.

For the results in this paper, we use the functional form above, but this can be improved in future work by a more complicated spatial structure function  $D(x_i, x_{i'}, t_i, t_{i'})$ , which is a function of pierce point locations  $x_i$  and  $x_{i'}$ , as well as the time of the measurements  $t_i$  and  $t_{i'}$ . This function could for example be derived experimentally from vertical TEC measurements themselves. This would allow more accurate modeling of sunrise and sunset phenomena, as well as meridional and zonal gradients.

### 2.2 Temporal distance

Two measurements do not necessarily have to occur at the same time, but one would expect the two measurements to differ more if they have been taken further apart from one another. This difference can also be modeled as a normal random variable:

$$v_i n_i - v_{i'} n_{i'} \sim N(0, T(\tau_{i,i'})), \quad (8)$$

where  $T(\tau_{i,i'})$  is a structure function that statistically describes the difference in vertical TEC from one measurement to the other when the time difference between the two measurements is  $\tau_{i,i'} = |t_i - t_{i'}|$ .

In this work, we use  $\sqrt{T(\tau)} = 20\tau$  in units of TECu/hour. This makes the assumption that the standard deviation of the difference of two vertical TEC measurements grows at the rate of 20 TEC units for each hour.

Again, an improved version of this time structure function could also be obtained by estimating it from data, but this is the subject of a future study.

### 2.3 Model and receiver errors

There are modeling errors that are caused by our assumption that we can scale a slanted line integral to a vertical line integral as shown in Eq. (2). First of all, this assumption does not correctly take into account that the slanted path cuts through different latitudes and longitudes and thus averages vertical TEC over a geographic area. In addition to this, our mapping function assumes an altitude profile for the ionosphere that is hopefully close to reality, but never perfect. The ionosphere can have several local electron density maxima and can have horizontal structure in the form of, e.g., traveling ionospheric disturbances, or typical ionospheric phenomena such as the Appleton anomaly at the Equator or the ionospheric trough at high latitudes.

In addition to this, GNSS receivers often have difficulty with low-elevation measurements arising from near-field multi-path propagation, which is different for both frequencies. These errors can in some cases severely affect vertical TEC estimation and thus also bias estimation.

To first order, the errors caused by the inadequacies of the model assumptions or anomalous near-field propagation increase proportionally to the zenith angle. It is useful to include this modeling error in the equations as yet another random variable. We have done this by assuming the elevation-angle-dependent errors to be a random variable of the following form:

$$v_i n_i - v_{i'} n_{i'} \sim N(0, E(\alpha_i) + E(\alpha_{i'})). \quad (9)$$

Here  $E(\alpha_i)$  is the structure function that indicates the modeling error variance as a function of elevation angle. In this work, we use a structure function where the variance grows rapidly as the elevation angle approaches the horizon, expressed as  $\sqrt{E(\alpha_i)} = 20(\cos \alpha_i)^4$ . This form penalizes lower elevations more heavily.

The structure function that takes into account vertical TEC scaling errors and receiver issues at low elevations can also be determined from vertical TEC estimates, e.g., by doing a histogram of coincident measurements of vertical TEC:

$$E(\alpha) \approx \langle |v_i n_i - v_{i'} n_{i'}|^2 \rangle \quad (10)$$

for all  $i, i'$ , where  $|x_i - x_{i'}| < \epsilon_d$  and  $|\alpha_{i'} - \alpha| < \epsilon_\alpha$ . Here  $\epsilon_d$  determines the threshold for distance between pierce points that we consider to be coincidental, and  $\epsilon_\alpha$  determines the resolution of the histogram on the  $\alpha$  axis. Here the angle brackets  $\langle \cdot \rangle$  denote a sample average operator.

### 3 Generalized linear least-squares solution

If we assume that all random variables in the structure functions of the previous section are independent random variables, we can simply add them together to obtain the full structure function

$$S_{i,i'} = D(d_{i,i'}) + T(\tau_{i,i'}) + E(\alpha_i) + E(\alpha_{i'}). \quad (11)$$

The differences in Eq. (5) can be expressed in matrix form as

$$\mathbf{m} = \mathbf{A}\mathbf{x} + \boldsymbol{\xi}, \quad (12)$$

where

$$\mathbf{A} = \begin{bmatrix} \ddots & \vdots & \vdots & \vdots & \ddots \\ \cdots & v_i & \cdots & v_i & \cdots \\ \ddots & \vdots & \vdots & \vdots & \ddots \end{bmatrix} - \begin{bmatrix} \ddots & \vdots & \vdots & \vdots & \ddots \\ \cdots & v_{i'} & \cdots & v_{i'} & \cdots \\ \ddots & \vdots & \vdots & \vdots & \ddots \end{bmatrix}, \quad (13)$$

with the measurement vector containing differences between vertically scaled measurements

$$\mathbf{m} = [\cdots, v_i m_i - v_{i'} m_{i'}, \cdots]^T, \quad (14)$$

and the unknown vector  $\mathbf{x}$  contains the receiver and satellite biases

$$\mathbf{x} = [b_0, \cdots, b_N, c_0, \cdots, c_M]^T. \quad (15)$$

For  $\mathbf{x}$ ,  $N$  indicates the number of receivers and  $M$  indicates the number of satellites.

The random variable vector  $\boldsymbol{\xi} \sim N(0, \boldsymbol{\Sigma})$  has a diagonal covariance matrix defined by the structure function of each measurement pair used to form differences:

$$\boldsymbol{\Sigma} = \text{diag}(S_{i,i'}, \cdots). \quad (16)$$

The theory matrix  $\mathbf{A}$  forms the forward model for the measurements as a linear function of the receiver biases.

This type of a measurement is known as a linear statistical inverse problem (Kaipio and Somersalo, 2005), and it has a closed-form solution for the maximum-likelihood estimator for the unknown  $\mathbf{x}$ , which in this case is a vector of receiver and satellite biases:

$$\hat{\mathbf{x}} = (\mathbf{A}^T \boldsymbol{\Sigma}^{-1} \mathbf{A})^{-1} \mathbf{A}^T \boldsymbol{\Sigma}^{-1} \mathbf{m}. \quad (17)$$

This matrix equation is often not practical to compute directly due to the typically large number of rows in  $\mathbf{A}$ . However, because the matrix  $\mathbf{A}$  is very sparse, the solution can be obtained using sparse linear least-squares solvers. In this work, we use the LSQR package (Paige et al., 1982) for minimizing  $|\tilde{\mathbf{A}}\mathbf{x} - \tilde{\mathbf{m}}|^2$ , where  $\tilde{\mathbf{A}}$  and  $\tilde{\mathbf{m}}$  are scaled versions of the matrix  $\mathbf{A}$  and vector  $\mathbf{m}$ . Each row of  $\mathbf{A}$  and  $\mathbf{m}$  are scaled with the square root of the variance of the associated measurement  $\sqrt{S_{i,i'}}$  in order to whiten the noise. In practice, this performs a linear transformation with matrix  $\mathbf{P}$  that projects the linear system into a space where the covariance matrix is an identity matrix  $\mathbf{P}^T \boldsymbol{\Sigma} \mathbf{P} = \mathbf{I}$ .

#### 3.1 Outlier removal and bad receiver detection

When a maximum-likelihood solution has been obtained, a useful diagnostic examines the residuals  $\mathbf{r} = |\tilde{\mathbf{A}}\hat{\mathbf{x}} - \tilde{\mathbf{m}}|$ . If the

residuals are larger than a certain threshold, they can be determined to be measurements that do not consistently fit the model, i.e., outliers.

Outliers can be caused by several different mechanisms. They can be of ionospheric origin, where vertical TEC gradients are sharper than our structure function expects them to be. They can also be simply caused by a loss of lock in the receiver, which can result in a large erroneous jump in slanted TEC.

These outlying measurements can be detected and removed by a statistical test, for example  $|\tilde{\mathbf{A}}\hat{\mathbf{x}} - \tilde{\mathbf{m}}| > 4\sigma$ , where  $\sigma$  is the standard deviation of the residuals estimated with  $\sigma = \text{median}(|\tilde{\mathbf{A}}\hat{\mathbf{x}} - \tilde{\mathbf{m}}|)$ . After the removal of problematic measurements, another improved maximum-likelihood solution, one not contaminated by outliers, can be obtained. The procedure for outlier removal can be repeated over several iterations to ensure that no problematic data are used for bias estimation.

## 4 Special cases

The previous section described the general method for estimating bias by using differences of slanted TEC measurements scaled by the mapping function. However, in practice this general form rarely needs to be used. In the following sections we describe several important and practical special cases, including known satellite bias, single receiver bias estimation, and multiple biases for each receiver.

### 4.1 Known satellite bias

If satellite bias is known a priori to a good accuracy, then it can be subtracted from the measurements and the difference equation. This reduces Eq. (5) to

$$v_i m_i - v_{i'} m_{i'} = (v_i n_i - v_{i'} n_{i'}) + v_i b_{j(i)} - v_{i'} b_{j(i')} + v_i \xi_i - v_{i'} \xi_{i'}. \quad (18)$$

This form results in the same linear measurement equations, except that the satellite biases are not unknown parameters. In this case, the theory matrix will only have at most two nonzero elements for each row.

For GPS receivers, satellite biases are known to a good accuracy using a separate and comprehensive analysis technique (Komjathy et al., 2005), and therefore this special case is appropriate for bias determination for GPS receivers.

### 4.2 Single receiver and known satellite bias

For the case that the satellite bias is known a priori and there is furthermore only one receiver, then the matrix only has one column with the unknown bias for the receiver.

This still results in an overdetermined problem that can be solved. The solution of this special case mathematically resembles a known analysis procedure that is often referred to as “scallop” (P. Doherty, personal communication, 2003;

Carrano and Groves, 2006). This latter technique depends on the assumption that the concave or convex shape of all zenith TEC estimates collected by a single receiver observed over a 24 h period should be minimized. This same goal is obtained when time differences are minimized. The main difference in this work is that the statistical framework uses a structure function that weights differences of measurements based on time between the measurements, the elevation angle, and the pierce point distance.

Figure 2 shows an example receiver bias that is determined using only data from a single receiver. In this case, time differences with  $\tau_{i,i'}$  less than 2 h were used, in order to keep the number of measurements manageable. We also used differences of measurements between different satellites. A comparison of results with measurements obtained with the standard MAPGPS algorithm shows quite similar results between the two techniques.

## 4.3 Multiple biases

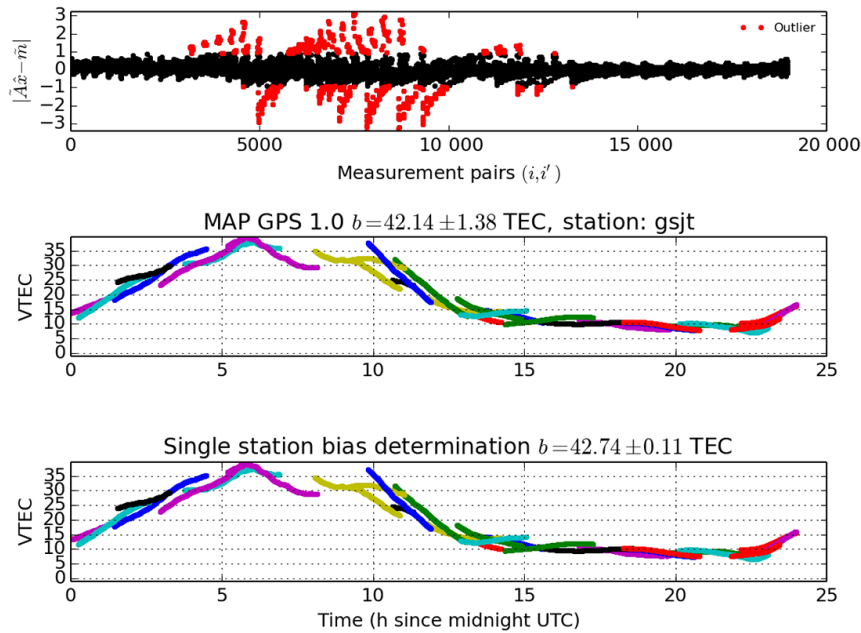
There are several reasons for considering the use of multiple biases for the same satellite and receiver. This special case can also be handled by the same framework.

If there is a loss of phase lock on a receiver, this might result in a discontinuity in the relative time-of-flight measurement, which appears as a discrete jump in the slanted TEC curve. Rather than attempting to realign the curve by assuming continuity, it is possible, using our framework, to simply assign an independent bias parameter to each continuous part of a TEC curve. As long as there are enough overlapping measurements, the biases can be estimated.

For GNSS implementations other than GPS, it is possible that satellite biases are not known or cannot be treated as a single satellite bias. For example, the GLONASS (Globalnaya Navigazionnaya Sputnikovaya Sistema) network uses a different frequency for each satellite, which means that any relative time delays between frequencies caused by the receiver or transmitter hardware will most likely be different for each satellite–receiver pair. Because of this, it is natural to combine the satellite bias and receiver bias into a combined bias, which is unique for each satellite–receiver combination.

Receiver biases are also known to depend on temperature (Coster et al., 2013), because dispersive properties of the different parts of the receiver can change as a function of temperature. If an independent bias term is assigned to, e.g., each satellite pass, this also allows temperature-dependent effects to be accounted for, as a single satellite pass lasts only part of the day.

Multiple bias terms can be added in a straightforward manner to the model using Eq. (18). This is the same equation that is used for the known satellite bias special case. Here,  $b_{j(i)}$  can be interpreted as an unknown relative bias term that can vary from one continuous slanted TEC curve to another. The meaning of  $j(i)$  in this case is different. It is a function that assigns bias terms to measurements  $i$ . Each receiver does not



**Figure 2.** Bias estimation using time differences of measurements obtained with a single receiver. Top panel shows the residuals of the maximum likelihood fit to the data. The points shown with red are automatically determined as outliers and not used for determining the receiver bias. These mostly occur during daytime at low elevations. The center panel shows vertical TEC estimated with the original MAPGPS receiver bias determination algorithm, while the bottom panel shows vertical TEC measurements obtained using only time differences using the new method described in this paper, assuming constant receiver bias and known satellite bias. The VTEC results do not differ significantly.

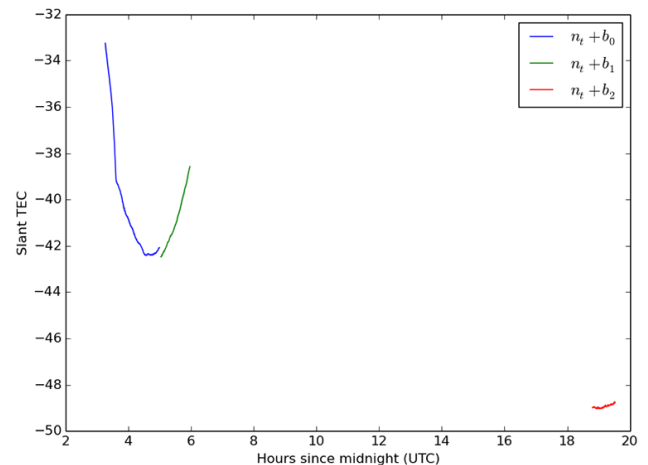
necessarily need to have one unknown bias parameter; it can have many.

An example of a measurement where the same satellite is observed using a single receiver is shown in Fig. 3. In this case, the satellite is measured in the morning first, and during the pass there is a discontinuity in the TEC curve, most likely due to loss of lock. We give the measurements before  $\sim 05:00$  UTC and from  $\sim 05:00$  to  $06:00$  UTC an independent bias term  $b_0$  and  $b_1$ . The same satellite is seen again in the evening at  $19:00$  UTC, and we again assign a new bias term to it:  $b_2$ .

Another multiple-bias example is shown in Fig. 4, which displays measurements from 19 neighboring receivers in China. A few of these receivers have discrete jumps in the slanted TEC curves that make it impossible to assume a constant receiver bias during the course of the entire day. This can be seen as a poor fit using the standard MIT Haystack MAPGPS algorithm. When multiple bias terms are introduced (in the same way as depicted in Fig. 3), the measurements from these stations can be recovered.

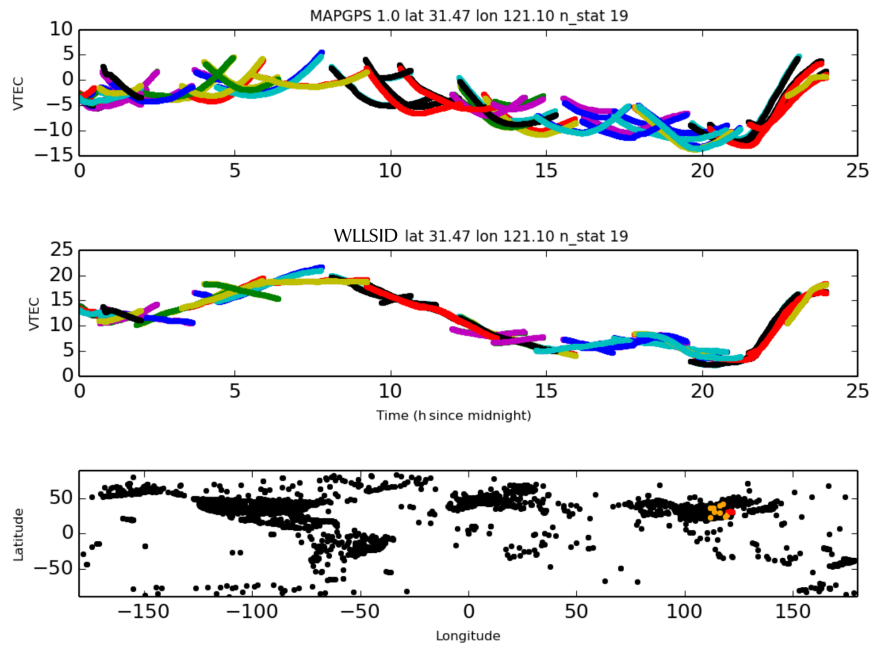
## 5 Comparison

In order to test the framework in practice for a large network of GPS receivers, we implemented the framework described in this paper as a new bias determination algorithm for the MIT Haystack MAPGPS software, which analyzes data from over 5000 receivers on a daily basis. We used the MAPGPS



**Figure 3.** An example of a measurement of a single satellite collected by a single receiver. A loss of phase lock occurs during the first pass of the satellite, resulting in two receiver biases for that pass ( $b_0$ : blue curve;  $b_1$ : green curve). During the next pass, a drift in the receiver bias could have occurred, so another receiver bias ( $b_2$ : red curve) is determined when the satellite is measured during the end of the day.

program to obtain slanted TEC estimates. Then, instead of using the MAPGPS routines for determining receiver biases, we used the new methods described in this paper. We label



**Figure 4.** Vertical TEC with satellite bias estimated using the current version of the MIT Haystack Observatory MAPGPS algorithm (Rideout and Coster, 2006) shown above. Multiple receivers have problems with receiver stability, which makes the assumption of unchanging receiver bias problematic and causes the receiver bias determination to fail. Vertical TEC with receiver biases obtained using the multiple-biases assumption is shown below. The new method produces a more consistent baseline. The red dots show stations that are plotted. The algorithm uses all of the data from the 19 stations marked with orange and red dots. The stations marked with orange are used to assist in reconstruction by using a larger geographic area.

results obtained using the new bias determination algorithm with WLLSID.

When fitting for receiver bias, we assumed a fixed receiver bias for each station over 24 h. We also assumed a known satellite bias, which was removed from the slanted measurement. To keep the size of the matrix manageable, we selected sets of 11 neighboring receiver stations and considered each combination of measurements across receiver and satellites occurring within 5 min of each other as differences that went into the linear least-squares solution. For this comparison, we did not use time differences.

To estimate the goodness of the new receiver bias determination, we compared the method with the existing MAPGPS algorithm for determining receiver bias, which utilizes a combination of scalloping, zero-TEC, and differential linear least-squares methods (Rideout and Coster, 2006; Gaposchkin and Coster, 1993). At latitudes higher than  $70^\circ$ , the zero TEC method is used. This method finds the value of bias in such a way that the minimum value of TEC is 0. At low and midlatitudes scalloping is first used. Scalloping finds the bias by finding the optimally flat vertical TEC  $\pm 2$  h around local noon. After finding the bias with either zero TEC or scalloping, the values are refined by using the differential TEC method described by Gaposchkin and Coster (1993).

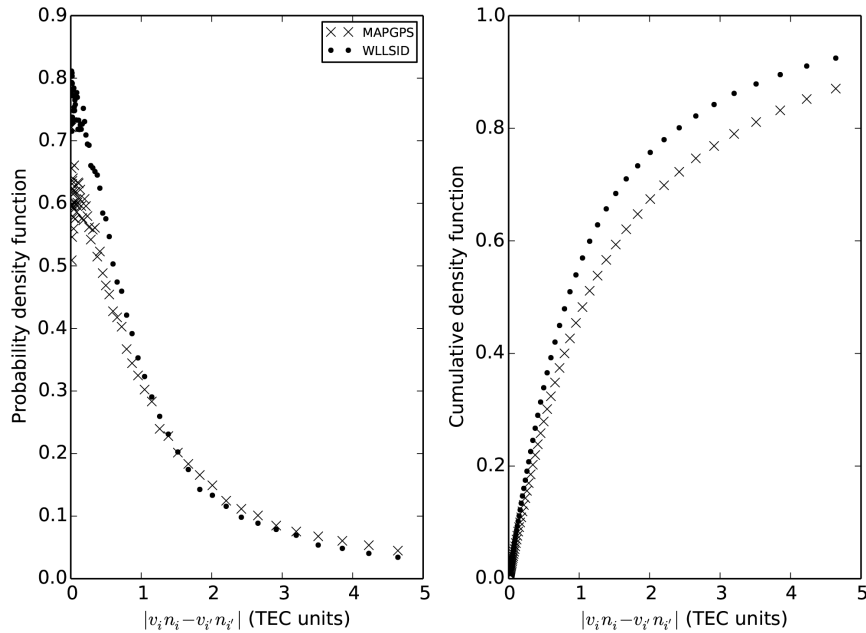
## 5.1 Self-consistency comparison

As a measurement of goodness, we used the absolute difference between two simultaneous geographically coincident measurements of vertical TEC  $|v_i n_i - v_{i'} n_{i'}|$ . The two measurements were considered coincident if the distance between the pierce points was less than 50 km and the measurements occurred within 30 s of each other. We also required that the two measurements were not obtained using the same receiver. As a figure of merit, we used the mean value of the absolute differences:

$$F = \frac{1}{N} \sum_{i \neq i'} |v_i n_i - v_{i'} n_{i'}|. \quad (19)$$

This figure of merit measures the self-consistency of the measurements, i.e., how well the vertical TEC measurements obtained with different receivers agree with one another. The smaller the value, the more consistent the vertical TEC measurements are.

All in all, we found 192 360 such coincidences for the 5220 GPS receivers in the database over a 24 h period starting at midnight 15 March 2015. Biases for the measurements were obtained both with the new and existing MAPGPS bias determination methods (MAPGPS and WLLSID). The figure of merit for the existing MAPGPS method was 2.25 TEC



**Figure 5.** Probability density function and cumulative density functions for 192 360 coincidences where vertical TEC was measurement within the same 30 s time interval and have pierce points less than 50 km apart from one another. The new method (labeled as WLLSID) has significantly more < 1 TEC unit differences than the old method.

units, and the WLLSID method has a figure of merit of 1.62 TEC units, which is about 30 % better.

The probability density function and cumulative density function estimates for the coincident vertical TEC differences are shown in Fig. 5. The new method results in significantly more < 1 TEC unit differences than the old method. It is evident from the cumulative distribution function that both methods also result in some coincidences that are in large disagreement with each other. The result occurs at least in part due to our inclusion of elevations down to 10° in the comparison, and it is therefore expected that some low-elevation measurements will be significantly different from one another.

## 5.2 Receiver bias day-to-day change

We also investigated receiver bias variation from day to day. We arbitrarily selected two consecutive quiet days: days 140 and 141 of 2015. We calculated the sample mean day-to-day change in receiver bias across all receivers:

$$\delta b = \frac{1}{N} \sum_{i=0}^N b_{i,140} - b_{i,141}, \quad (20)$$

where  $N$  is the number of receiver. In addition to this, we calculated the standard deviation using sample variance:

$$\sigma_b = \sqrt{\frac{1}{N-1} \sum_{i=0}^N ((b_{i,140} - b_{i,141}) - \delta b)^2}. \quad (21)$$

For the MAPGPS method, we found overall that  $\delta b = -0.2 \pm 0.05(2\sigma)$  TEC units and  $\sigma_b = 1.6$  TEC units. With the new WLLSID method, we found that  $\delta b = 0.02 \pm 0.05(2\sigma)$  TEC units and  $\sigma_b = 1.3$  TEC units. This indicates not only that the day-to-day variability is slightly smaller with the new method but also that the old method has a statistically significant nonzero mean day-to-day change in receiver bias, which is not seen with the new method. When the data are broken down into high and equatorial latitudes, the result is similar.

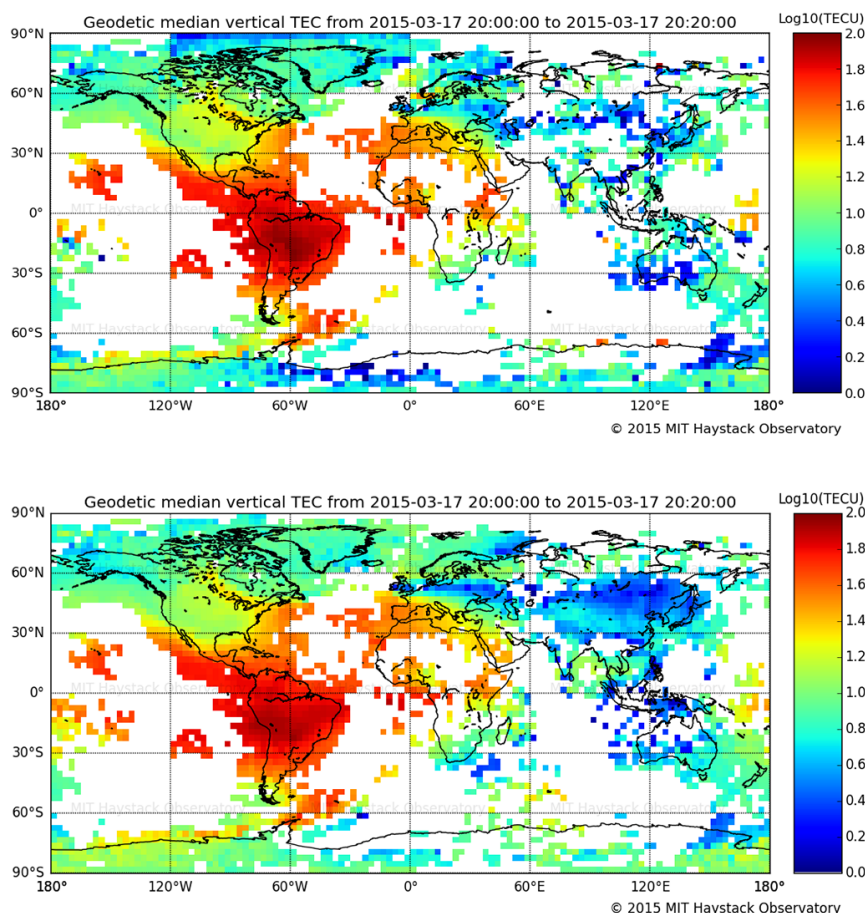
## 5.3 Qualitative comparison

In order to qualitatively compare the MAPGPS bias determination method with the WLLSID method, we produced a global TEC map with the WLLSID method and the existing MAPGPS bias determination method. The processing involved with making these TEC maps is described by Rideout and Coster (2006).

To highlight the differences between the two methods, we chose a geomagnetic storm day (17 March 2015), where we would expect large gradients and more issues with data quality. Because of this, the bias determination problem is more challenging than on a geomagnetically quiet day.

The two maps are shown in Fig. 6. The two TEC maps show no major differences in broad general features, which is to be expected. The main differences between the two images is that there are visibly fewer outliers produced by the new method. For example, the Asian and European sectors are significantly smoother with the new method. The ionospheric trough associated with the sub-auroral ioniza-





**Figure 6.** Global TEC map produced using two different methods for the St. Patrick's Day storm on 17 March 2015. Top: a map produced with the MAPGPS method. Bottom: a map produced with the new WLLSID bias determination method.

tion drift (SAID) stretching from Asia to northern Europe is much more clearly seen with the new method. Probably due to the strong gradients associated with the storm, the old method fails to derive good bias values for a large number of receivers in China, resulting in negative TEC values, which are not plotted. The new method finds these values of bias more reliably.

The polar regions have slightly more TEC when using WLLSID. This is because the MAPGPS uses the zero-TEC method for receiver bias determination at high latitudes, whereas the WLLSID method is applied in the same way everywhere.

## 6 Conclusions

In this paper, we describe a statistical framework for estimating bias of GNSS receivers by examining differences between measurements. We show that the framework results in a linear model, which can be solved using linear least squares. We describe a way that the method can be efficiently implemented using a sparse matrix solver with very

low memory footprint, which is necessary when estimating receiver biases for extremely large networks of GNSS receivers.

We compare our method for bias determination with the existing MIT Haystack MAPGPS method and find the new method results in smaller day-to-day variability in receiver bias, as well as a more self-consistent vertical TEC map. Qualitatively, the new method reproduces the same general features as the existing MAPGPS method that we compared with, but it is generally less noisy and contains fewer outliers.

The weighting of the measurement differences is done using a structure function. We outline a few ways to do this, but these are not guaranteed to be the best ones. Future improvements to the method can be obtained by coming up with a better structure function, which can possibly be determined from the data themselves, e.g., using histograms, empirical orthogonal function analysis, or similar methods.

While we describe how differences result in a linear model, we do not explore to a large extent in this work the possible ways in which differences can be formed between measurements. Because of the large number of mea-

surements, obviously all the possible differences cannot be included in the model. In this study, we only explored two types of differences: (1) differences between geographically separated, temporally simultaneous measurements obtained with tens of receivers located near each other and (2) differences in time less than 2 h performed with a single receiver. There are countless other possibilities, and it is a topic of future work to explore what differences to include to obtain better results.

We describe several important special cases of the method: known satellite bias, single receiver and known satellite bias, and the case of multiple bias terms per receiver. The first two are applicable for GPS receivers, and the last one is applicable to GLONASS measurements, as well as measurements where a loss satellite signal has caused a step-like error in the TEC curve.

*Acknowledgements.* GPS TEC analysis and the Madrigal distributed database system are supported at MIT Haystack Observatory by the activities of the Atmospheric Sciences Group, including National Science Foundation grants AGS-1242204 and AGS-1025467 to the Massachusetts Institute of Technology. Vertical TEC measurements using the standard MAPGPS algorithm are provided free of charge to the scientific community through the Madrigal system at <http://madrigal.haystack.mit.edu>.

Edited by: M. Portabella

## References

- Bust, G. S. and Mitchell, C. N.: History, current state, and future directions of ionospheric imaging, *Rev. Geophys.*, 46, 1–23, 2008.
- Carrano, C. S. and Groves, K.: The GPS Segment of the AFRL-SCINDA Global Network and the Challenges of Real-Time TEC Estimation in the Equatorial Ionosphere, *Proceedings of the 2006 National Technical Meeting of The Institute of Navigation*, Monterey, CA, 2006.
- Coster, A., Williams, J., Weatherwax, A., Rideout, W., and Herne, D.: Accuracy of GPS total electron content: GPS receiver bias temperature dependence, *Radio Sci.*, 48, 190–196, doi:10.1002/rds.20011, 2013.
- Coster, A. J., Gaposchkin, E. M., and Thornton, L. E.: Real-time ionospheric monitoring system using the GPS, MIT Lincoln Laboratory, Technical Report, 954, 1992.
- Davies, K.: Ionospheric Radio Propagation, National Bureau of Standards, 278–279, 1965.
- Dyrud, L., Jovancevic, A., Brown, A., Wilson, D., and Ganguly, S.: Ionospheric measurement with GPS: Receiver techniques and methods, *Radio Sci.*, 43, RS6002, doi:10.1029/2007RS003770, 2008.
- Feltens, J.: Chapman profile approach for 3-D global TEC representation, IGS Presentation, 1998.
- Gaposchkin, E. M. and Coster, A. J.: GPS L1-1,2 Bias Determination, Lincoln Laboratory Technical Report, 971, 1993.
- Kaipio, J. and Somersalo, E.: *Statistical and Computational Inverse Problems*, Springer, New York, USA, 2005.
- Komjathy, A., Sparks, L., Wilson, B. D., and Mannucci, A. J.: Automated daily processing of more than 1000 ground-based GPS receivers for studying intense ionospheric storms, *Radio Sci.*, 40, RS6006, doi:10.1029/2005RS003279, 2005.
- Mannucci, A. J., Wilson, B. D., Yuan, D. N., Ho, C. H., Lindqwister, U. J., and Runge, T. F.: A global mapping technique for GPS-derived ionospheric total electron content measurements, *Radio Sci.*, 33, 565–582, 1998.
- Paige, C. C. and Michael, A.: Saunders, LSQR: An algorithm for sparse linear equations and sparse least squares, *ACM Transactions on Mathematical Software (TOMS)*, 8, 43–71, 1982.
- Rideout, W. and Coster, A.: Automated GPS processing for global total electron content data, *GPS Solutions*, 10, 219–228, 2006.
- Vierinen, J., Norberg, J., Lehtinen, M. S., Amm, O., Roininen, L., Väänänen, A., and McKay-Bukowski, D. J.: Beacon satellite receiver for ionospheric tomography, *Radio Sci.*, 49, 1141–1152, 2014.