

Supplement of Atmos. Meas. Tech., 9, 5203–5212, 2016
<http://www.atmos-meas-tech.net/9/5203/2016/>
doi:10.5194/amt-9-5203-2016-supplement
© Author(s) 2016. CC Attribution 3.0 License.



Supplement of

Comparison of OMI NO₂ observations and their seasonal and weekly cycles with ground-based measurements in Helsinki

Iolanda Ialongo et al.

Correspondence to: Iolanda Ialongo (iolanda.ialongo@fmi.fi)

The copyright of individual parts of the supplement might differ from the CC-BY 3.0 licence.

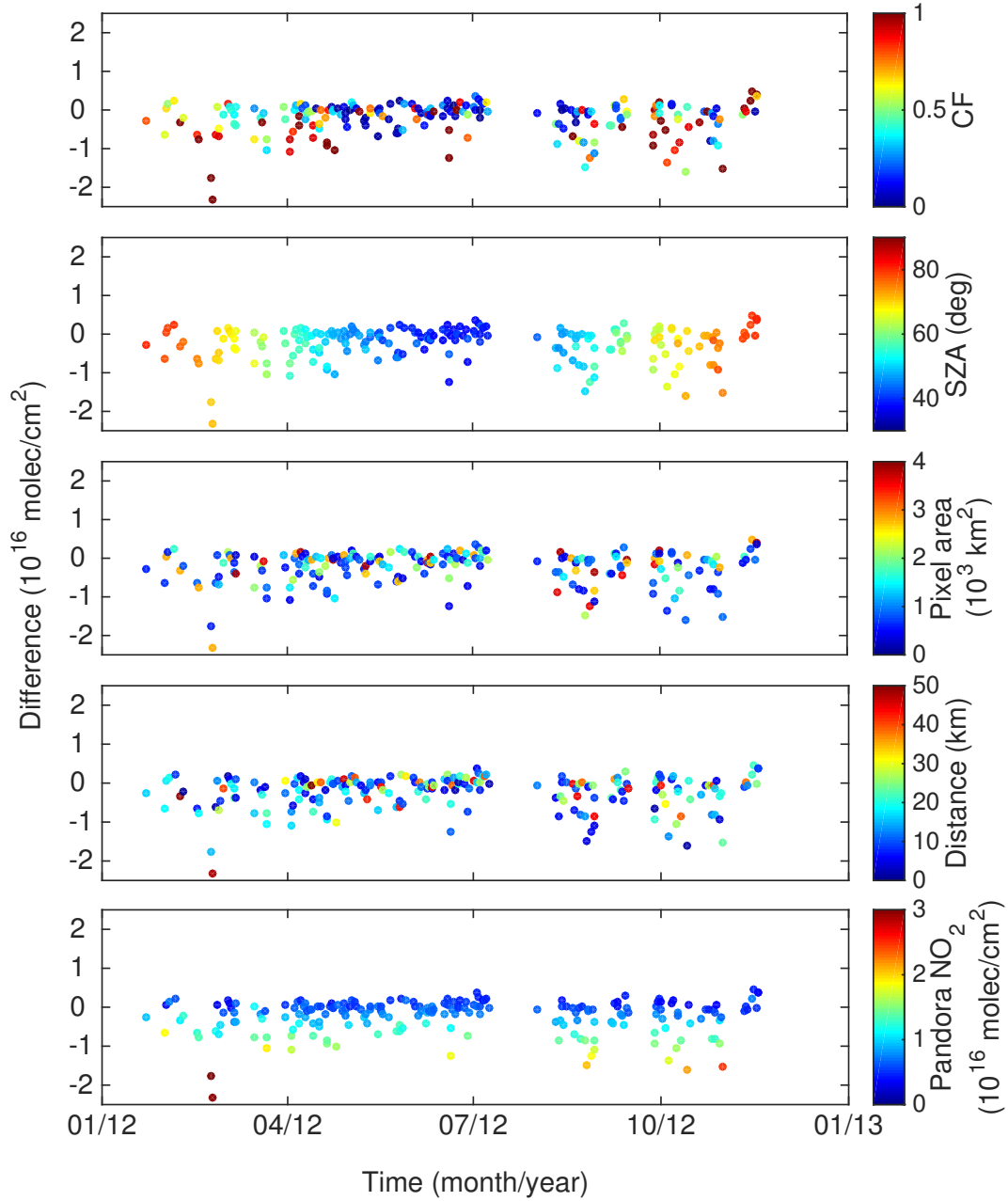


Figure S1. Difference between OMI DOMINO and Pandora NO₂ total column in Helsinki during 2012. The colorscales in the different panels correspond to OMI CF, SZA, pixel area, distance between the actual location of Pandora instrument and the center of OMI pixel, as well as Pandora NO₂ total column.

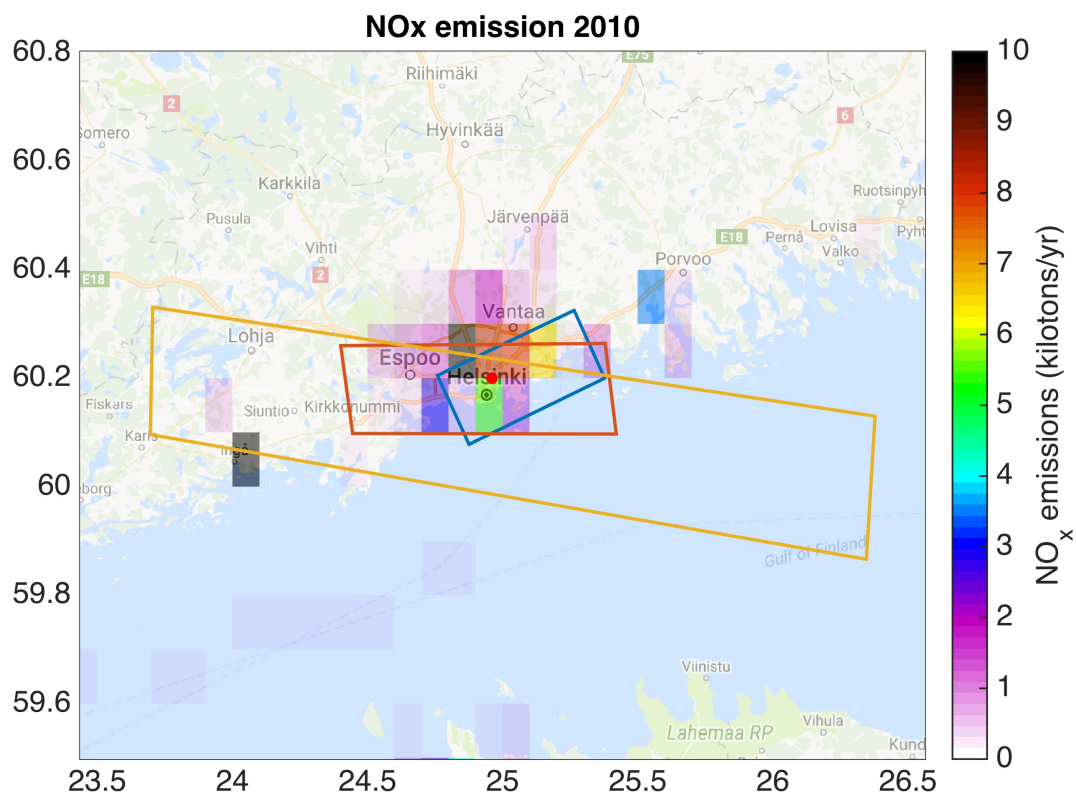


Figure S2. EDGARv4.3.1 NO_x emission map over Helsinki area in 2010. The outlines of the OMI pixels with cross-track position 17, 53 and 60 are shown in blue, red and yellow, respectively.