

**Boundary layer
height inferred from
DTS measurements**

C. A. Keller et al.

This discussion paper is/has been under review for the journal Atmospheric Measurement Techniques (AMT). Please refer to the corresponding final paper in AMT if available.

Fiber optic distributed temperature sensing for the determination of the nocturnal atmospheric boundary layer height

C. A. Keller¹, H. Huwald², M. K. Vollmer¹, A. Wenger¹, M. Hill¹, M. B. Parlange², and S. Reimann¹

¹Air Pollution/Environmental Technology Laboratory, Empa, Duebendorf, Switzerland

²School of Architecture, Civil and Environmental Engineering, EPFL, Lausanne, Switzerland

Received: 1 April 2010 – Accepted: 15 June 2010 – Published: 24 June 2010

Correspondence to: C. A. Keller (christoph.keller@empa.ch)

Published by Copernicus Publications on behalf of the European Geosciences Union.

Title Page

Abstract

Introduction

Conclusions

References

Tables

Figures

⏪

⏩

◀

▶

Back

Close

Full Screen / Esc

Printer-friendly Version

Interactive Discussion



Abstract

A new method for measuring air temperature profiles in the atmospheric boundary layer at high spatial and temporal resolution is presented. The measurements are based on Raman scattering distributed temperature sensing (DTS) with a fiber optic cable attached to a tethered balloon. These data were used to estimate the height of the stable nocturnal boundary layer. The experiment was successfully deployed during a two-day campaign in September 2009, providing evidence that DTS is well suited for this atmospheric application. Observed stable temperature profiles exhibit an exponential shape confirming similarity concepts of the temperature inversion close to the surface. The atmospheric mixing height (MH) was estimated to vary between 5 m and 50 m as a result of the nocturnal boundary layer evolution. This value is in good agreement to the MH derived from concurrent Radon-222 (^{222}Rn) measurements and in previous studies.

1 Introduction

Air pollutants emitted at the surface are mixed into the lowest layer of the atmosphere that, depending on meteorological conditions, varies largely in depth from a few meters to a few kilometers (Brutsaert, 1982; Stull, 1988). The atmospheric boundary layer height, hereafter referred to as mixing height (MH), denotes the vertical extent of this layer making the MH a key parameter for describing the physical state of the lower troposphere. Vertical mixing within this layer is driven by turbulence that is either produced mechanically (shear production) or produced and destroyed by buoyancy. The atmospheric boundary layer is commonly classified as unstable, neutral or stable, depending on the thermal stratification. For all conditions, various definitions of the MH exist, which is reflected in the numerous suggestions on how to measure or parameterize this quantity (Seibert et al., 2000, and references therein).

AMTD

3, 2723–2741, 2010

Boundary layer height inferred from DTS measurements

C. A. Keller et al.

Title Page

Abstract

Introduction

Conclusions

References

Tables

Figures

◀

▶

◀

▶

Back

Close

Full Screen / Esc

Printer-friendly Version

Interactive Discussion



Boundary layer height inferred from DTS measurements

C. A. Keller et al.

Title Page

Abstract

Introduction

Conclusions

References

Tables

Figures



Back

Close

Full Screen / Esc

Printer-friendly Version

Interactive Discussion



The stable boundary layer (SBL) normally develops during night time when solar warming stops and surface cooling due to a net negative long-wave radiation budget induces a stable stratification of the air. This process considerably weakens turbulent vertical mixing, leading to a MH in the range of only a few meters up to 500 m (e.g. Stull, 1988; Mahrt and Vickers, 2002; Pahlow et al., 2001; Salmond and McKendry, 2002; Cheng et al., 2005; Kumar et al., 2006; Steinbacher et al., 2007). A shallow and persistent SBL over landmasses typically develops after hot and dry summer days under low wind and clear sky conditions. Such conditions are of particular interest as they represent an excellent possibility to estimate the local flux of atmospheric trace gases (e.g. Conen et al., 2002; Buchmann et al., 2003; Steinbacher et al., 2007). Since the temperature profile reflects the balance between surface cooling and vertical mixing, highly resolved measurements of the evolution of this profile provide valuable information about the state of the SBL.

Radiosondes are the most commonly used means to provide high-resolution information on vertical profiles of meteorological parameters such as temperature, humidity and wind speed (e.g. Sempreviva and Gryning, 2000; Johansson and Bergstro, 2005; Basha and Venkat Ratnam, 2009). However, radio soundings are usually only taken at specific times, wherefore these data do not allow studying the short term evolution of the atmosphere. A continuous monitoring of the atmosphere is possible with remote sensing systems such as lidars (Eichinger et al., 1993; Pahlow et al., 2005) and RASSodars (Nadeau et al., 2009). Unfortunately, these systems can be limited in vertical resolution which makes it difficult to accurately detect very low MH or have other limitations due to eye safety or noise pollution (e.g. Clifford et al., 1994; Lammert and Boesenberg, 2005; Hennemuth and Lammert, 2006; Emeis et al., 2008). An important tool for studying the BLH has been measurements on tall towers and tethered balloons (e.g. Clarke et al., 1971; Haugen et al., 1971; Soilemes et al., 1993; Van Ulden and Wieringa, 1996; Schnitzhofer et al., 2009). While high spatial resolution can be achieved with a tall tower (although associated with high costs), it has been difficult to obtain synchronous profile measurements from a tethered balloon system.

**Boundary layer
height inferred from
DTS measurements**

C. A. Keller et al.

[Title Page](#)[Abstract](#)[Introduction](#)[Conclusions](#)[References](#)[Tables](#)[Figures](#)[⏪](#)[⏩](#)[◀](#)[▶](#)[Back](#)[Close](#)[Full Screen / Esc](#)[Printer-friendly Version](#)[Interactive Discussion](#)

Raman scattering fiber optic distributed temperature sensing (DTS) has recently proven to be a powerful tool for accurately measuring ambient temperature at high temporal (1 min) and spatial (1 m) resolution over distances of several kilometers (Selker et al., 2006a,b; Tyler et al., 2009; Roth et al., 2010). It is based on the inelastic scattering of photons (Raman effect) causing a temperature dependent intensity ratio between the amplitudes of the backscattered Stokes to anti-Stokes signals. Laser pulses travel within an optical fiber and the backscattered light reaches a detector where the intensity of the incident signals are evaluated. The exact position on the fiber of a backscattered signal is determined from the time of flight of a light pulse. For a more detailed description of the DTS system, the reader is referred to Selker et al. (2006a) who also give several examples of possible applications of DTS for temperature measurements in different environmental systems. To date, the use of DTS in environmental monitoring has been predominantly focused on hydrological applications (e.g. Selker et al., 2006b; Westhoff et al., 2007; Moffett et al., 2008; Tyler et al., 2008; Hoes et al., 2009; Vogt et al., 2010; Roth et al., 2010), although its characteristics also perfectly meet the requirements for atmospheric sensing.

In this context, the Nocturnal Boundary Layer Balloon Experiment (NOBALEX) was carried out in September 2009 in a suburban area (Duebendorf, Switzerland) with the aim to test the ability of DTS for measuring the evolution of vertical temperature profiles within the stable boundary layer as well as to estimate fluxes of anthropogenic pollutants between the surface and the atmosphere.

This paper focuses on the DTS measurements conducted during the NOBALEX campaign, including a description of the experimental setup, a quality analysis, and the estimation of the nocturnal MH. Results are compared with an independent estimation of the MH based on measurements of Radon-222 (^{222}Rn).

2 Setup and experiments

A schematic drawing of the experimental setup is shown in Fig. 1. A tethered balloon lifting system was used to vertically install a fiber optic cable (AFL mini-link, 900 μm o.d., 0.7 gm^{-1}) in the lowest 100 m of the atmosphere. Connected to a DTS instrument (Agilent Technology, model N4386A), the fiber cable was fixed along the 100 m cord of the tethered balloon (4.25 m^3 helium; Wittich & Visser, Rijswijk, The Netherlands). The fiber cable was measured in a single-ended configuration, with a 60 m lead section of the fiber cable coiled up in a thermally insulated water bath of an accurately known temperature (measured by several HOBO Tidbit temperature loggers with a resolution of 0.02 $^{\circ}\text{C}$ and an accuracy of 0.2 $^{\circ}\text{C}$), allowing for an in-situ calibration of the DTS system. The next 200 m of the fiber string were looped up and down along the balloon cord. As a consequence, two temperature profiles could be measured simultaneously, enabling to check both the quality and consistency of the measurements as well as the spatial repeatability of the employed system. The last 350 m section of the fiber cable remained on the spool and was measured to avoid the presence of disturbing fiber termination effects in the two profiles of interest. The spatial resolution along the fiber was 1 m.

The loss in optical intensity that weakens the backscattered signal increases with distance along the fiber and is specific for the fiber optical cable used. To quantify and correct for this effect, the cable was pre-calibrated in the lab prior to the experiments by measuring two different cable sections of 50 m each in a reference container (water bath) of known temperature.

The integration time for the DTS measurements was set to 5 min. This period is long enough to obtain a precision for temperature better than 0.5 $^{\circ}\text{C}$ and short enough to account for the time scale of changes in the temperature profile. The response time of the 900 μm o.d. plastic coated fiber optic cable to a sudden ambient air temperature change is well within the specified integration time. Averaging the two simultaneously measured temperature profiles allows distinguishing between measurement noise and

Boundary layer height inferred from DTS measurements

C. A. Keller et al.

Title Page

Abstract

Introduction

Conclusions

References

Tables

Figures



Back

Close

Full Screen / Esc

Printer-friendly Version

Interactive Discussion



real fluctuations. Results show that the two simultaneously measured sections (profiles) of a measurement (temperature trace) are highly correlated and it is concluded that temperature changes are well captured using an integration time of 5 min (see below).

5 Atmospheric pressure was measured with high frequency (every 8 s) at approximately 1 m below the balloon using a P300-Baro pressure sensor (Pace Scientific Inc.). The pressure information was used to derive the height above ground of the balloon. This procedure was considered to be more accurate than using the length of the cord since it is not affected by the wind drag of the balloon.

10 To additionally measure anthropogenic pollutants in the near-surface atmosphere, a 150 m Teflon tube was fixed to the balloon cord and air was drawn through the tube by a membrane pump for sampling and analysis at the ground (Keller et al., 2010).

All measurements were carried out at a station of the Swiss National Air Pollution Monitoring Network (NABEL) in Duebendorf (47° 24' N, 8° 36' E, 433 m a.s.l.), within
15 a suburban area located about 10 km west of Zurich. All principal meteorological parameters and a suite of trace gases are continuously monitored as part of the monitoring programme. To complement this data set and to obtain a second, independent estimate of the MH, measurements of ^{222}Rn were carried out throughout the experimental period. Ambient air concentrations of ^{222}Rn were measured at 10 m above ground
20 using a dual loop two-filter system (Zaharowski et al., 2004). In addition, an accumulation chamber in combination with an Alphaguard Radon detector monitor (SAPHYMO GmbH, Frankfurt a.M., Germany) as described in detail by Szegvary et al. (2007) was used to determine the local exhalation rate of ^{222}Rn .

25 A first measurement campaign (8 September, 4 p.m. to 9 September, 9 a.m., 2009, UTC+1) was conducted with the goal to derive vertical profiles of greenhouse gases. Therefore, the balloon was repeatedly moved to discrete altitudes (100 m, 80 m, 50 m, 35 m, 20 m, 10 m, 5 m, 2 m) where it was kept for approximately 15 min before being shifted to the next level. This procedure resulted in several profiles of reduced heights. A second campaign (10 September, 7 p.m. to 11 September, 9 a.m., 2009, UTC+1)

**Boundary layer
height inferred from
DTS measurements**C. A. Keller et al.

[Title Page](#)[Abstract](#)[Introduction](#)[Conclusions](#)[References](#)[Tables](#)[Figures](#)[Back](#)[Close](#)[Full Screen / Esc](#)[Printer-friendly Version](#)[Interactive Discussion](#)

was specifically dedicated to the acquisition of vertical temperature profiles of the near-surface atmosphere and the balloon was permanently kept at a height of 100 m above ground, providing a complete temperature record throughout the night.

3 Data analysis and results

5 Measurements were collected during two nights following warm days with daily temperature maxima of 25.1 °C and 24.3 °C, respectively. By the early morning, surface air temperatures had decreased to 9.6 °C and 12.4 °C and wind speeds at the 10 m level never exceeded 1 ms⁻¹ during the night. The balloon did not experience significant horizontal drag during the nights which leads to the conclusion that wind speed was
10 weak within the entire 100 m slab. Mean net radiation at the surface between 7 p.m. to 7 a.m. was -71.0 W m⁻² in the first night and -53.2 W m⁻² in the second, indicating strong surface cooling. While the first night was clear, light clouds appeared in the second half of the second night explaining the less pronounced cooling.

3.1 Example trace

15 An exemplary measurement from the DTS instrument is shown in Fig. 2. The upper panel shows the temperature record along the first 350 m of the fiber cable measured during a 5 min integration period, the lower panel depicts the intensity loss (in dB) which occurred along the same distance. The intensity decreases fairly linearly along the cable at about 3 dB km⁻¹. The absence of noticeable steps in the loss trace indicate that
20 the measurement is not subject to local inhomogeneities, perturbations or irregularities along the cable (the steep drop in intensity at the beginning of the sensor cable is a result of the fiber connection to the DTS instrument).

The mean temperature of the in-situ calibration section (10–70 m) was 19.2 °C during the experiment, only 0.6 °C lower than the uniform temperature of 19.8 °C of the water
25 bath. This final offset correction was applied to all DTS temperature measurements.

Boundary layer height inferred from DTS measurements

C. A. Keller et al.

Title Page

Abstract

Introduction

Conclusions

References

Tables

Figures



Back

Close

Full Screen / Esc

Printer-friendly Version

Interactive Discussion



**Boundary layer
height inferred from
DTS measurements**

C. A. Keller et al.

[Title Page](#)[Abstract](#)[Introduction](#)[Conclusions](#)[References](#)[Tables](#)[Figures](#)[⏪](#)[⏩](#)[◀](#)[▶](#)[Back](#)[Close](#)[Full Screen / Esc](#)[Printer-friendly Version](#)[Interactive Discussion](#)

The upward and downward segment (profile 1 and 2) of the vertical temperature profiles of the atmosphere were derived using the information where the balloon was fixed to the fiber string and at which altitude the balloon resided. The two profiles coincide well and have a correlation coefficient R^2 equal to 0.98 and a root mean square error (RMSE) of 0.44 °C. These values demonstrate that the system calibration procedure resulted in the determination of valid set parameters for the specific optical fiber used during the experiments.

Indeed, offset-corrected DTS temperature measurements are corroborated when compared to conventional temperature measurements with a ventilated thermohygrometer (Thygan VTP, Meteolabor, Switzerland) observed at the NABEL station, as shown in Fig. 3 (comparison of data at the same height above ground). Except for a short period in the morning, DTS measurements closely follow the NABEL measurements and no significant differences between the two DTS segments are observed.

3.2 Temperature profiles and MH estimation

The evolution of the potential temperature Θ during the second campaign is shown in Fig. 4a. As observed in the measurements of campaign 1, the potential temperature was almost constant throughout the entire layer before sunset at about 6:50 p.m., indicating a well mixed boundary layer during this time. With sunset, the air near the surface started to cool and an inversion developed. Since this cooling is induced by the net heat loss of the ground due to strong radiative cooling, the air next to the surface experiences the strongest temperature decrease. The stable atmospheric stratification was eroded shortly after sunrise when the surface quickly warmed up again and latent and sensible heat was transferred to the atmosphere leading to increased convection, turbulence and mixing.

Figure 4b shows a representative nocturnal profile of Θ . This profile can be described with the exponential model (Stull, 1988)

$$\Theta(z) = \Delta\Theta_s \cdot e^{-z/H} \quad (1)$$

where $\Delta\Theta_s$ is the potential temperature difference between the non-disturbed air aloft and the surface (in °C), z is the height (in m) and H is the e-folding depth in m. H denotes the depth of a rectangle with abscissa $\Delta\Theta_s$ which covers the same area as below the exponential curve and is therefore often referred to as the mixing height (Stull, 1988).

For every temperature profile during stable atmospheric conditions, a minimum RMSE fit between observed and theoretical profile (Eq. 1) was calculated which provided the MH for each time. This MH varied between 5 m and 50 m during night 2 (Fig. 4a, bold dashed line) and between 15 m and 45 m during night 1 (no figure shown). These values are similar to the MH previously estimated for the same site under similar meteorological conditions (Buchmann et al., 2003; Steinbacher et al., 2007).

3.3 Comparison with MH estimated from Radon-222 measurements

Radioactive ^{222}Rn has a precisely known lifetime of 5.5 days and is released from soils with relatively small spatial and temporal variability, wherefore it is often used as tracer for atmospheric dilution (e.g. Biraud et al., 2000; Schmidt et al., 2001; Conen et al., 2002; Zaharowski et al., 2004). Relating the observed concentration increase between time t_1 and t_2 to the local exhalation rate $F_{\text{Rn}222}$ (in $\text{Bq m}^{-2} \text{h}^{-1}$), the MH can be estimated by (Sesana et al., 2003)

$$\text{MH} = \frac{F_{\text{Rn}222}(1 - e^{-\lambda\Delta t})}{\lambda(C_{\text{Rn}222}(t_2) - C_{\text{Rn}222}(t_1)e^{-\lambda\Delta t})} \quad (2)$$

with λ being the radioactive decay constant of ^{222}Rn ($7.55 \times 10^{-3} \text{h}^{-1}$), and $C_{\text{Rn}222}(t)$ the measured ^{222}Rn concentration at time t . From 7 September to 12 September, measured ^{222}Rn concentrations at Duebendorf showed a distinct diurnal cycle with values

Boundary layer height inferred from DTS measurements

C. A. Keller et al.

Title Page

Abstract

Introduction

Conclusions

References

Tables

Figures

◀

▶

◀

▶

Back

Close

Full Screen / Esc

Printer-friendly Version

Interactive Discussion



Boundary layer height inferred from DTS measurements

C. A. Keller et al.

Title Page

Abstract

Introduction

Conclusions

References

Tables

Figures

⏪

⏩

◀

▶

Back

Close

Full Screen / Esc

Printer-friendly Version

Interactive Discussion



in the order of 5 Bq m^{-3} during the day but rising to more than 20 Bq m^{-3} during night. Mean exhalation rates amounted to $65 \text{ Bq m}^{-2} \text{ h}^{-1}$, which is in good agreement with the value of $67.9 \text{ Bq m}^{-2} \text{ h}^{-1}$ approximated from gamma dose rate data by Szegvary et al. (2007) for this region. Applying Eq. (2) to the ^{222}Rn measurements during the two campaigns (using $\Delta t=2 \text{ h}$), a MH varying between 15 m and 50 m is derived (see red squares in Fig. 4a).

^{222}Rn concentrations decreased in the second half of campaign 2, wherefore no MH could be estimated and indicating that residual air was mixed into the SBL during this period. This process is not reflected by the DTS measurements, showing that caution is needed when comparing the MH derived from the ^{222}Rn accumulation with the MH estimated from surface cooling since the time scales and the underlying physical principles may differ. While the ^{222}Rn method is representative for how effectively air has been mixed within the considered time span of 2 h, the temperature profile depicted by the DTS system reflects the current state of the lower atmosphere and its thermal stability. Nevertheless, where a direct comparison is possible, the MH estimated by the two methods lie within a factor of 1.5. This result indicates that under stable conditions, the evolution of the potential temperature profile is a good measure for atmospheric mixing.

4 Conclusions

Raman scattering fiber optic distributed temperature sensing (DTS) in combination with a tethered balloon was successfully applied to measure the evolution of high resolution vertical temperature profiles within the atmospheric boundary layer. Results from a series of field experiments demonstrate that DTS is very well suited for atmospheric applications. The measurement technique and experimental setup presented in this study constitute an important extension of past DTS applications, typically in the area of hydrological monitoring and geo-engineering. As a result of its relatively easy handling, DTS constitutes an interesting and promising alternative for measuring atmo-

spheric temperature profiles with high spatial and temporal resolution when compared to conventional techniques. It may also be used as a reference for in-situ validation of other sampling techniques such as atmospheric boundary layer lidars.

Measurements were carried out during two clear nights in September 2009 in the presence of relatively strong temperature inversions. Most of the temperature profiles measured during this study closely match an exponential model, showing the evolution of a strong inversion in the boundary layer during the observational periods. The MH derived from the temperature profiles varied between 5 m and 50 m. This value is similar to those estimated in previous studies and deviates less than 50% from the MH derived from ^{222}Rn measurements at the same site using a mass balance approach. The relatively high sampling frequency of the DTS measurements allows the estimation of a MH with a temporal resolution of only 5 min.

Up to now, the method presented in this study is restricted to low wind conditions, since the tethered balloon system suffers from strong wind drag otherwise. For using the fiber optic DTS system continuously and under more challenging weather conditions, installing it on a tall tower or mast might be an interesting alternative.

Acknowledgements. We highly acknowledge the cooperation of F. Conen in conducting and calibrating the ^{222}Rn measurements. W. Eugster contributed with both technical support and scientific discussions. We are grateful to M. Steinbacher, D. Brunner and S. Henne for helpful discussions. The Swiss National Air Pollution Monitoring Network (NABEL) is run by Empa in joint collaboration with the Swiss Federal Office for the Environment. This project was funded by the Swiss National Science Foundation (project no. 200021-117753, 200020-125092/1 and 200021-120238).

References

Basha, G. and Venkat Ratnam, M.: Identification of atmospheric boundary layer height over a tropical station using high-resolution radiosonde refractivity profiles: comparison with GPS radio occultation measurements, *J. Geophys. Res.*, 114, D16101, doi:10.1029/2008JD011692, 2009. 2725

Boundary layer height inferred from DTS measurements

C. A. Keller et al.

Title Page

Abstract

Introduction

Conclusions

References

Tables

Figures

◀

▶

◀

▶

Back

Close

Full Screen / Esc

Printer-friendly Version

Interactive Discussion



Boundary layer height inferred from DTS measurements

C. A. Keller et al.

Title Page

Abstract

Introduction

Conclusions

References

Tables

Figures

◀

▶

◀

▶

Back

Close

Full Screen / Esc

Printer-friendly Version

Interactive Discussion



- Biraud, S., Ciais, P., Ramonet, M., Simmonds, P., Kazan, V., Monfray, P., O'Doherty, S., Spain, T., and Jennings, S.: European greenhouse gas emissions estimated from continuous atmospheric measurements and Radon 222 at Mace Head, Ireland, *J. Geophys. Res.*, 105, 1351–1366, 2000. 2731
- 5 Brutsaert, W.: *Evaporation into the Atmosphere*, Kluwer Academic Publishers, Dordrecht, Boston, Lancaster, 1982. 2724
- Buchmann, B., Stemmler, K., and Reimann, S.: Regional emissions of anthropogenic halocarbons derived from continuous measurements of ambient air in Switzerland, *Chimia*, 57, 522–528, 2003. 2725, 2731
- 10 Cheng, Y., Parlange, M., and Brutsaert, W.: Pathology of Monin-Obukhov similarity in the stable boundary layer, *J. Geophys. Res.-Atmos.*, 110, D06101, doi:10.1029/2004JD004923, 2005. 2725
- Clarke, R., Dyer, A., Brook, R., Reid, D., and Troup, J.: The Wangara experiment: boundary layer data, Division of Meteorological Physics Technical Paper 19 Commonwealth Scientific and Industrial Research Organisation of Australia (CSIRO), Australia, 1971. 2725
- 15 Clifford, S., Kaimal, J., Lataitis, R., and Strauch, R.: Ground-based remote profiling in atmospheric studies: an overview, *Proc. IEEE*, 82(3), 313–355, 1994. 2725
- Conen, F., Neftel, A., Schmid, M., and Lehmann, B.: $\text{N}_2\text{O}/^{222}\text{Rn}$ – soil flux calibration in the stable nocturnal surface layer, *Geophys. Res. Lett.*, 29, doi:10.1029/2001GL013429, 2002. 2725, 2731
- 20 Eichinger, W., Cooper, D., Parlange, M., and Katul, G.: The application of a scanning, water raman-lidar as a probe of the atmospheric boundary layer, *IEEE T. Geosci. Remote Se.*, 31, 70–79, 1993. 2725
- Emeis, S., Schafer, K., and Munkel, C.: Surface-based remote sensing of the mixing layer height – a review, *Meteorol. Z.*, 17, 621–630, doi:10.1127/0941-2948/2008/0312, 2008. 2725
- 25 Haugen, D., Kaimal, J., and Bradley, E.: An experimental study of Reynold stress and heat flux in the atmospheric surface layer, *Q. J. Roy. Meteor. Soc.*, 97, 168–180, 1971. 2725
- Hennemuth, B. and Lammert, A.: Determination of the atmospheric boundary layer height from radiosonde and lidar backscatter, *Bound.-Lay. Meteorol.*, 120, 181–200, doi:10.1007/s10546-005-9035-3, 2006. 2725
- 30 Hoes, O., Luxemburg, W., Westhof, M., van de Giesen, N., and Selker, J.: Identifying seepage in ditches and canals in polders in The Netherlands by distributed temperature sensing, *Lowland Technol. Int.*, 11, 21–26, 2009. 2726

Boundary layer height inferred from DTS measurements

C. A. Keller et al.

Title Page

Abstract

Introduction

Conclusions

References

Tables

Figures

◀

▶

◀

▶

Back

Close

Full Screen / Esc

Printer-friendly Version

Interactive Discussion



- Johansson, C. and Bergstro, H.: An auxiliary tool to determine the height of the boundary layer, *Bound.-Lay. Meteorol.*, 115, 423–432, doi:10.1007/s10546-004-1424-5, 2005. 2725
- Keller, C. A., Huwald, H., Vollmer, M., and Reimann, S.: Regional greenhouse gas fluxes derived from vertical concentration profiles at a suburban site in Switzerland, in preparation, 2010.
- 5 Kumar, V., Kleissl, J., Meneveau, C., and Parlange, M.: Large-eddy simulation of a diurnal cycle of the atmospheric boundary layer: atmospheric stability and scaling issues, *Water Resour. Res.*, 42, W06D09, doi:10.1029/2005WR004651, 2006. 2725
- Lammert, A. and Boesenberg, J.: Determination of the convective boundary layer height with laser remote sensing, *Bound.-Lay. Meteorol.*, 119, 159–170, doi:10.1007/s10546-005-9020-x, 2005. 2725
- 10 Mahrt, L. and Vickers, D.: Contrasting vertical structures of nocturnal boundary layers, *Bound.-Lay. Meteorol.*, 105, 351–363, doi:10.1023/A:1019964720989, 2002. 2725
- Moffett, K., Tyler, S., Torgersen, T., Menon, M., Selker, J., and Gorelick, M.: Processes controlling the thermal regime of saltmarsh channel beds, *Environ. Sci. Technol.*, 42, 671–676, doi:10.1021/es071309m, 2008. 2726
- 15 Nadeau, D., Brutsaert, W., Parlange, M., Bou-Zeid, E., Barrenetxea, G., Couach, O., Boldi, M., Selker, J., and Vetterli, M.: Estimation of urban sensible heat flux using a dense wireless network of observations, *Environ. Fluid Mech.*, 9, 635–653, 2009. 2725
- 20 Pahlow, M., Parlange, M., and Porte-Agel, F.: On Monin-Obukhov similarity in the stable atmospheric boundary layer, *Bound.-Lay. Meteorol.*, 99, 225–248, 2001. 2725
- Pahlow, M., Kleissl, J., Parlange, M., Ondov, J., and Harrison, D.: Atmospheric boundary-layer structure observed during a haze event due to forest-fire smoke, *Bound.-Lay. Meteorol.*, 114, 53–70, 2005. 2725
- 25 Roth, T., Westhoff, M., Huwald, H., Huff, J., Rubin, J., Barrenetxea, G., Vetterli, M., Parriaux, A., Selker, J., and Parlange, M.: Stream temperature response to three riparian vegetation scenarios by use of a distributed temperature validated model, *Environ. Sci. Technol.*, doi:10.1021/es902654f, 44(6), 2072–2078, 2010. 2726
- Salmond, J. and McKendry, L.: Secondary ozone maxima in a very stable nocturnal boundary layer: observations from the Lower Fraser Valley BC, *Atmos. Environ.*, 36, 5771–5782, doi:10.1016/S1352-2310(02)00698-2, 2002. 2725
- 30 Schmidt, M., Glatzel-Mattheier, H., Sartorius, H., Worthy, D., and Levin, I.: Western European N₂O emissions: a top-down approach based on atmospheric observations, *J. Geophys.*

**Boundary layer
height inferred from
DTS measurements**

C. A. Keller et al.

Title Page

Abstract

Introduction

Conclusions

References

Tables

Figures

◀

▶

◀

▶

Back

Close

Full Screen / Esc

Printer-friendly Version

Interactive Discussion



Res., 106, 5507–5516, 2001. 2731

Schnitzhofer, R., Wisthaler, A., and Hansel, A.: Real-time profiling of organic trace gases in the planetary boundary layer by PTR-MS using a tethered balloon, *Atmos. Meas. Tech.*, 2, 773–777, doi:10.5194/amt-2-773-2009, 2009. 2725

5 Seibert, P., Beyrich, F., Gryning, S., Joffre, S., Rasmussen, A., and Tercier, P.: Review and intercomparison of operational methods for the determination of the mixing height, *Atmos. Environ.*, 34, 773–777, doi:10.1016/S1352-2310(99)00349-0, 2000. 2724

Selker, J., Thevenaz, L., Huwald, H., Mallet, A., Luxemburg, W., van de Giesen, N., Stejskal, M., Zeman, J., Westhoff, M., and Parlange, M.: Distributed fiber-optic temperature sensing for hydrological systems, *Water Resour. Res.*, 42, W12202, doi:10.1029/2006WR005326, 2006a. 2726

10 Selker, J., van de Giesen, N., Westhoff, M., Luxemburg, W., and Parlange, M.: Fiber optics opens window on stream dynamics, *Geophys. Res. Lett.*, 33, L24401, doi:10.1029/2006GL027979, 2006b. 2726

15 Sempreviva, A. and Gryning, S.: Mixing height over water and its role on the correlation between temperature and humidity fluctuations in the unstable surface layer, *Bound.-Lay. Meteorol.*, 97, 273–291, doi:10.1023/A:1002749729856, 2000. 2725

Sesana, L., Caprioli, E., and Marcazzan, G.: Long period study of outdoor radon concentration in Milan and correlation between its temporal variations and dispersion properties of atmosphere, *J. Environ. Radioactiv.*, 65, 147–160, doi:10.1016/S0265-931X(02)00093-0, 2003. 2731

20 Soilemes, A., Helmis, C., Papageorgas, P., and Asimakopoulos, D.: A tethered balloon profiler system, *Meas. Sci. Technol.*, 4, 1163–1168, 1993. 2725

Steinbacher, M., Fischer, A., Vollmer, M., Buchmann, B., Reimann, S., and Hueglin, C.: Perennial observations of molecular hydrogen at a suburban site in Switzerland, *Atmos. Environ.*, 41, 2111–2124, doi:10.1016/j.atmosenv.2006.10.075, 2007. 2725, 2731

25 Stull, R.: *An Introduction to Boundary Layer Meteorology*, Kluwer Academic Publishers, Dordrecht, 1988. 2724, 2725, 2731

Szegvary, T., Leuenberger, M. C., and Conen, F.: Predicting terrestrial ²²²Rn flux using gamma dose rate as a proxy, *Atmos. Chem. Phys.*, 7, 2789–2795, doi:10.5194/acp-7-2789-2007, 2007. 2728, 2732

30 Tyler, S., Burak, S., McNamara, J., Lamontagne, A., Selker, J., and Dozier, J.: Fiber optic measurement of distributed base temperatures of two snowpacks, *J. Glaciol.*, 54, 673–679,

**Boundary layer
height inferred from
DTS measurements**C. A. Keller et al.

[Title Page](#)[Abstract](#)[Introduction](#)[Conclusions](#)[References](#)[Tables](#)[Figures](#)[⏪](#)[⏩](#)[◀](#)[▶](#)[Back](#)[Close](#)[Full Screen / Esc](#)[Printer-friendly Version](#)[Interactive Discussion](#)

doi:10.3189/002214308786570827, 2008. 2726

Tyler, S., Selker, J., Hausner, M., Hatch, C., Torgersen, T., Thodal, C., and Schladow, S.: Environmental temperature sensing using Raman spectra DTS fiber-optic methods, *Water Resour. Res.*, 45, W00D23, doi:10.1029/2008WR007052, 2009. 2726

5 Van Ulden, A. and Wieringa, J.: Atmospheric boundary layer research at Cabauw, Bound.-Lay. Meteorol., 78, 39–69, doi:10.1007/BF00122486, 1996. 2725

Vogt, T., Schneider, P., Hahn-Woernle, L., and Cirpka, O.: Estimation of seepage rates in a losing stream by means of fiber-optic high-resolution vertical temperature profiling, *J. Hydrol.*, 380, 154–164, doi:10.1016/j.jhydrol.2009.10.033, 2010. 2726

10 Westhoff, M. C., Savenije, H. H. G., Luxemburg, W. M. J., Stelling, G. S., van de Giesen, N. C., Selker, J. S., Pfister, L., and Uhlenbrook, S.: A distributed stream temperature model using high resolution temperature observations, *Hydrol. Earth Syst. Sci.*, 11, 1469–1480, doi:10.5194/hess-11-1469-2007, 2007. 2726

15 Zaharowski, W., Chambers, S., and Henderson-Sellers, A.: Ground based Radon-222 observations and their application to atmospheric studies, *J. Environ. Radioactiv.*, 76, 3–33, doi:10.1016/j.jenvrad.2004.03.033, 2004. 2728, 2731

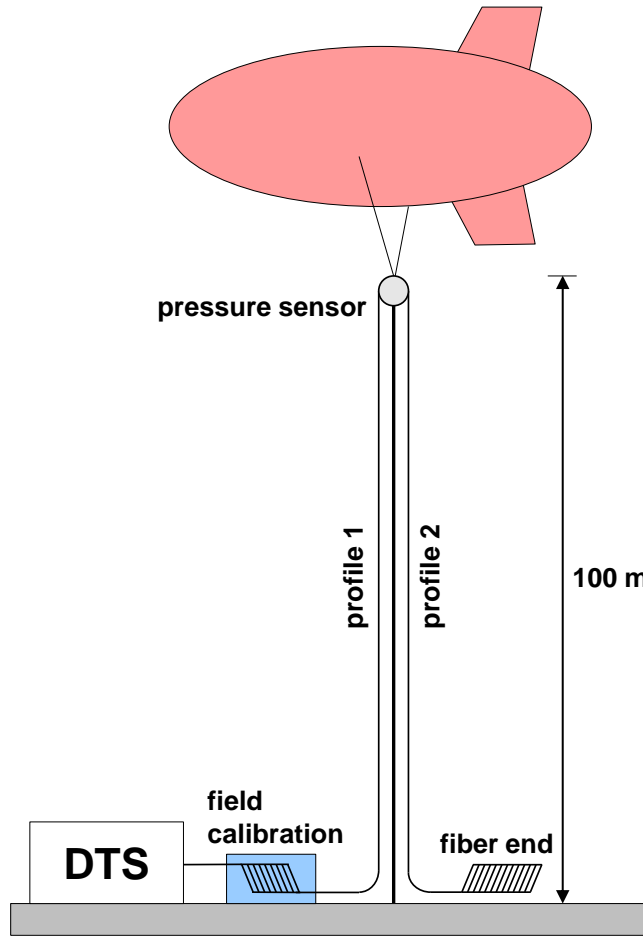


Fig. 1. Illustration of the experimental setup.

Boundary layer height inferred from DTS measurements

C. A. Keller et al.

Title Page

Abstract Introduction

Conclusions References

Tables Figures

◀ ▶

◀ ▶

Back Close

Full Screen / Esc

Printer-friendly Version

Interactive Discussion



Boundary layer height inferred from DTS measurements

C. A. Keller et al.

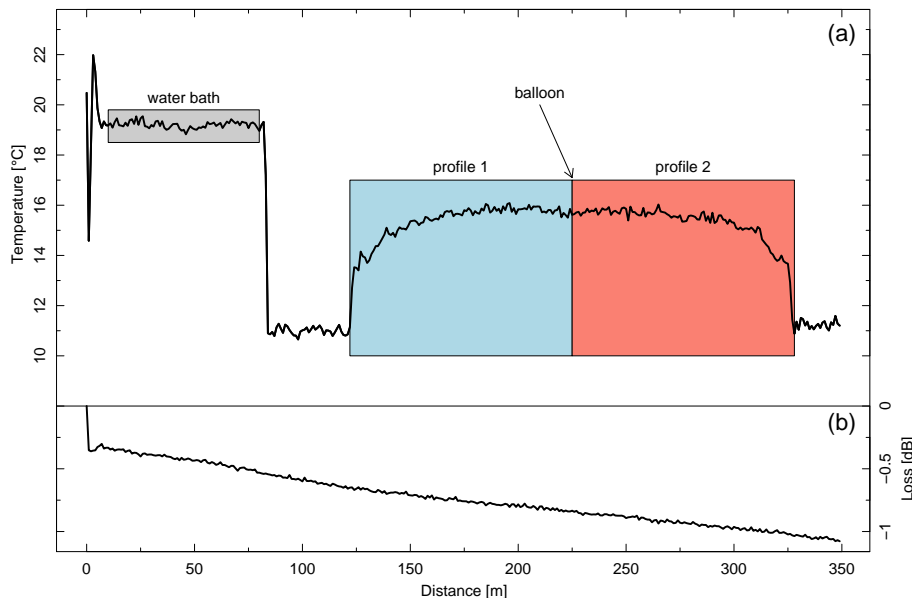


Fig. 2. DTS record of 11 September, 02:20 a.m. along the first 350 m of the fiber cable. **(a)** Temperature measurements in °C, the shaded areas show the location of the calibration section (water bath) and the upward and downward atmospheric profile fiber cable sections. **(b)** Loss of signal intensity (dB).

[Title Page](#)[Abstract](#)[Introduction](#)[Conclusions](#)[References](#)[Tables](#)[Figures](#)[◀](#)[▶](#)[◀](#)[▶](#)[Back](#)[Close](#)[Full Screen / Esc](#)[Printer-friendly Version](#)[Interactive Discussion](#)

Boundary layer height inferred from DTS measurements

C. A. Keller et al.

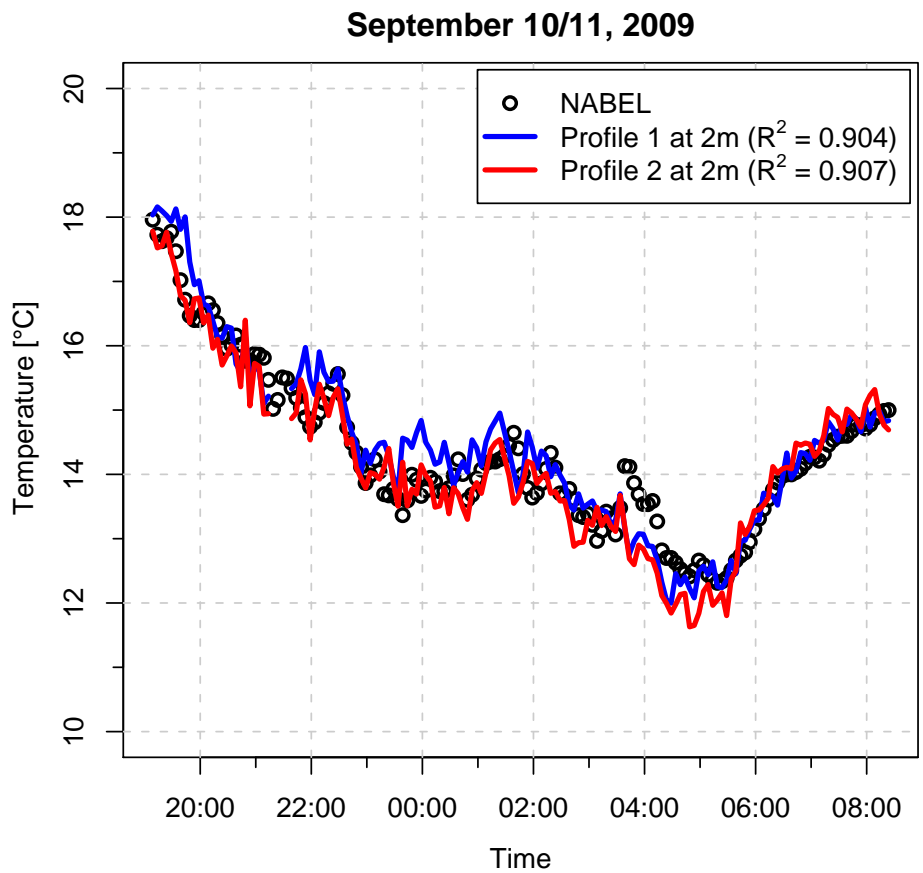


Fig. 3. Comparison of DTS temperatures measured 2 m above ground and air temperature measurements from the collocated NABEL network station (cf. Fig. 1 for definition of profiles). Correlations between DTS measurements and NABEL data are given in the legend.

Title Page

Abstract	Introduction
Conclusions	References
Tables	Figures

⏪
⏩

◀
▶

Back
Close

Full Screen / Esc

Printer-friendly Version

Interactive Discussion



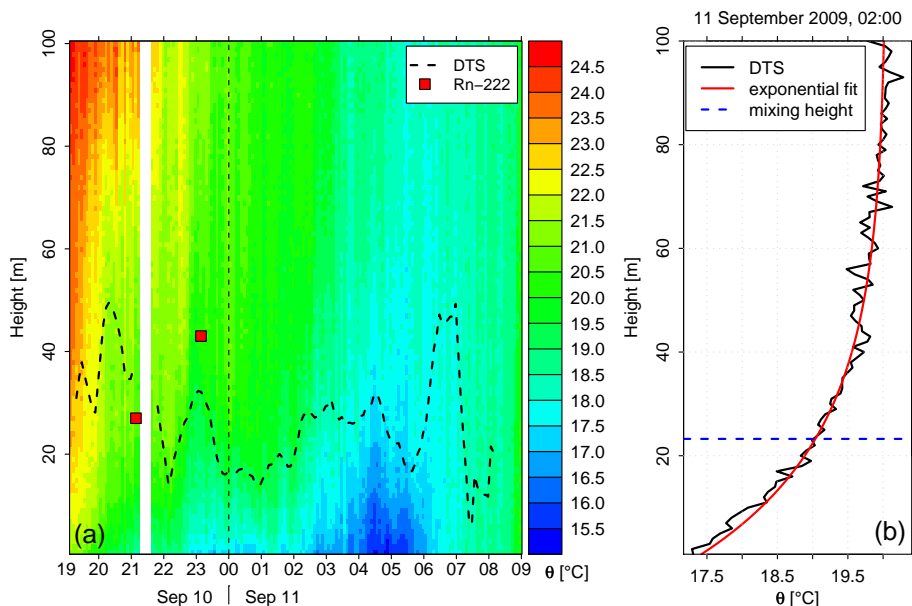


Fig. 4. (a) Evolution of potential temperature Θ during campaign 2 (10 Sep, 7 p.m.–11 Sep, 9 p.m.). The bold dashed line and the red squares denote the mixing heights as determined from exponential profile fits and ^{222}Rn measurements, respectively. The white vertical band is a period of missing data; (b) Example of a DTS measurement profile for 11 Sep, 2 a.m. (black) and the corresponding best fit of an exponential curve (red). Mixing height H is shown in blue.

Boundary layer height inferred from DTS measurements

C. A. Keller et al.

Title Page

Abstract

Introduction

Conclusions

References

Tables

Figures

◀

▶

◀

▶

Back

Close

Full Screen / Esc

Printer-friendly Version

Interactive Discussion

