

**Towards a 3-D
tomographic retrieval
for GLORIA**

J. Ungermann et al.

This discussion paper is/has been under review for the journal Atmospheric Measurement Techniques (AMT). Please refer to the corresponding final paper in AMT if available.

Towards a 3-D tomographic retrieval for the Air-borne Limb-imager GLORIA

**J. Ungermann^{1,2}, M. Kaufmann¹, L. Hoffmann¹, P. Preusse¹, H. Oelhaf³,
F. Friedl-Vallon³, and M. Riese¹**

¹Institut für Chemie und Dynamik der Geosphäre (ICG-1), Forschungszentrum Jülich, Jülich, Germany

²German Research School for Simulation Sciences GmbH, Jülich, Germany

³Institut für Meteorologie und Klimaforschung, Karlsruher Institut für Technologie, Karlsruhe, Germany

Received: 8 June 2010 – Accepted: 2 July 2010 – Published: 15 July 2010

Correspondence to: J. Ungermann (j.ungermann@fz-juelich.de)

Published by Copernicus Publications on behalf of the European Geosciences Union.

Title Page

Abstract

Introduction

Conclusions

References

Tables

Figures

◀

▶

◀

▶

Back

Close

Full Screen / Esc

Printer-friendly Version

Interactive Discussion



Abstract

GLORIA (Gimballed Limb Observer for Radiance Imaging of the Atmosphere) is a new remote sensing instrument essentially combining a Fourier transform infrared spectrometer with two two-dimensional (2-D) detector arrays in combination with a highly flexible gimbal mount. It will be housed in the belly pod of the German research aircraft HALO (High Altitude and Long Range Research Aircraft). It is unique in its high spatial and spectral resolution. Furthermore, the horizontal view angle with respect to the aircraft can be varied from 45° to 135°. This allows for tomographic measurements of mesoscale events for a wide variety of atmospheric constituents.

In this paper, a fast tomographic retrieval scheme is presented, which is able to fully exploit the high-resolution radiance observations of the GLORIA limb sounder. The algorithm is optimized for massive 3-D retrievals of several hundred thousands of measurements and atmospheric constituents on common hardware. The new scheme is used to explore the capabilities of GLORIA to sound the atmosphere in full 3-D with respect to the choice of the flightpath and to different measurement modes of the instrument using ozone as a test species. It is demonstrated that the achievable resolution should approach 200 m vertically and 20 km–30 km horizontally. Finally, a comparison of the 3-D inversion with conventional 1-D inversions using the assumption of a horizontally homogeneous atmosphere is performed.

1 Introduction

The exchange of air between the upper troposphere and lower stratosphere (UTLS) plays an important role in the proper determination of radiative forcing and thereby also for long-term climate forecasts (e.g. de F. Forster and Shine, 1997). Due to the physical, chemical and microphysical complexity of the region, the involved processes are among the least understood of the atmosphere (e.g. Holton et al., 1995).

AMTD

3, 2995–3046, 2010

Towards a 3-D tomographic retrieval for GLORIA

J. Ungermann et al.

Title Page

Abstract

Introduction

Conclusions

References

Tables

Figures

◀

▶

◀

▶

Back

Close

Full Screen / Esc

Printer-friendly Version

Interactive Discussion



Towards a 3-D tomographic retrieval for GLORIA

J. Ungermann et al.

Title Page

Abstract

Introduction

Conclusions

References

Tables

Figures



Back

Close

Full Screen / Esc

Printer-friendly Version

Interactive Discussion



For example, mixing of trace gasses in this altitude region can be understood as a scale cascade from synoptic scale streamers over elongated filaments down to small-scale three-dimensional turbulence. Currently, there is an observational gap between the synoptic-scale streamers resolved by satellite instruments and small-scale features resolved by in situ instruments (e.g. Sparling and Bacmeister, 2001). Consequently, improved observation techniques are needed to fill this gap by providing high-resolution 3-D fields of atmospheric temperature and trace gasses.

Due to their ability to sound the atmosphere with high vertical resolution, infrared limb sounding instruments have been employed to study processes in the UTLS.

Trace gas fields obtained from global infrared limb sounding (e.g. LIMS (Gille and Russel III, 1984), SAMS (Drummond et al., 1980), CRISTA (Riese et al., 1997; Ofermann et al., 1999), or MIPAS (Fischer et al., 2008)) greatly contributed to our understanding of the 3-D composition, structure and large-scale dynamics of the middle atmosphere (e.g. Riese et al., 2002). However, the spatial resolution obtained by these sensors is relatively coarse compared to the scales of structures in the tropopause region. This limitation may be overcome in the future by new limb imaging concepts (e.g. Riese et al., 2005), which will greatly improve both the vertical sampling as well as the horizontal sampling and coverage and provide, for the first time, global 3-D observations (ESA, 2008; Ungermann et al., 2010).

Current limb emission sensors such as MIPAS-STR (e.g. Höpfner et al., 2001; Keim et al., 2008) and CRISTA-NF (e.g. Spang et al., 2008; Hoffmann et al., 2009) on-board the high-flying Russian aircraft Geophysica provide adequate spatial sampling in two dimensions (vertical and along the flight track). However, they are limited by a relative broad weighting function (≈ 200 km) of the observations in the viewing direction (perpendicular to the flight track).

Where such conventional remote sensing instruments cannot resolve the atmosphere well along line-of-sight, the new Gimballed Limb Observer for Radiance Imaging of the Atmosphere (GLORIA) instrument has the capability to derive, for the first time, fine atmospheric structures in three dimensions. GLORIA is a development of

Towards a 3-D tomographic retrieval for GLORIA

J. Ungermann et al.

[Title Page](#)[Abstract](#)[Introduction](#)[Conclusions](#)[References](#)[Tables](#)[Figures](#)[Back](#)[Close](#)[Full Screen / Esc](#)[Printer-friendly Version](#)[Interactive Discussion](#)

Forschungszentrum Jülich GmbH and the Karlsruhe Institute for Technology. Deriving highly resolved 3-D temperature and trace gas concentration fields from GLORIA observations (e.g. for transport studies) poses a tomographic problem that needs special attention to handle the computational complexity. Further, GLORIA serves as an air-borne precursor for a proposed satellite-borne instrument (ESA, 2008).

2-D tomographic retrievals for satellite-borne, limb-sounding measurements were explored by a variety of authors for different purposes and individual instruments (e.g. Solomon et al., 1984; Gurevich, 1995). Practical implementations for the large-scale 2-D retrieval of atmospheric constituents were first produced by Carlotti et al. (2001) for MIPAS and Livesey and Read (2000) for MLS (Microwave Limb Sounder). However, no current satellite infrared limb-sounder can deliver a highly resolved 3-D picture of atmospheric structures.

In Sect. 2, we introduce the GLORIA instrument in more detail. We present our methodology for tomographic retrieval in Sect. 3, thereby first describing our forward model in Sect. 3.1, and our regularization scheme in Sect. 3.2. Some important implementation details for handling the sheer amount of unknowns and measurements are presented with respect to the inversion in Sect. 3.3 and with respect to diagnosing the results in Sect. 3.4. We apply the methodology on a simplified retrieval setup and analyze the principal capabilities of a tomographic retrieval using simulated measurements of GLORIA in Sect. 4.1 to Sect. 4.4. We finally compare the results with conventional retrievals using the assumption of horizontal homogeneity in Sect. 4.5.

2 The GLORIA Infrared Limb Imager

GLORIA (Fig. 1) is an infrared remote limb sounder that provides unprecedented 3-D sampling of the atmosphere for a limb sounder. Infrared limb sounding exploits the radiation thermally emitted in the atmosphere along the line-of-sight (LOS) of the instrument, which is directed towards the limb of the Earth's atmosphere. The point of the LOS closest to the surface is called the tangent point. Under optically-thin conditions,

the tangent point of the LOS generally determines the point in the atmosphere that contributes most to the measured radiation.

The GLORIA instrument (Friedl-Vallon et al., 2006) essentially combines a Fourier transform infrared spectrometer with two two-dimensional (2-D) detector arrays measuring in the spectral regions from 770 cm^{-1} to 1400 cm^{-1} (see Table 1 for instrument characteristics). The 2-D detector array will consist of about 128×128 pixels, providing more than 16 000 simultaneous limb-views within an elevation angle of -3.27° (corresponding to an altitude of roughly 4 km) to 0.8° and with a horizontal field-of-view of 4.07° . To increase the signal-to-noise ratio, individual array pixels will be co-added to obtain sampling patterns of specific scientific measurement modes.

The GLORIA instrument has the ability to pan the instrument LOS relative to the flight direction. This is realized using a gimbal mount that also stabilizes the LOS during measurements. While conventional air-borne instruments usually point 90° relative to the flight direction, GLORIA is capable of adjusting its LOS between 45° and 135° , allowing for viewing the same air volume from multiple angles. Depending on the aircraft, onto which GLORIA will be mounted, the possible range of angles may be slightly reduced due to obstructing parts of the aircraft. In combination with adapted flight paths of the carrier, this shall enable the retrieval of three-dimensionally (3-D) resolved air volumes.

Another advantage of the instrument concept is its great flexibility, i.e. the trade-off between spatial and spectral resolution can be adapted to the scientific needs. While currently only two modes are specified (“dynamics” and “chemistry” mode of Table 1), the hardware poses few restrictions should a certain scientific question require a different trade-off between spatial and spectral sampling. As this paper explores the capabilities of GLORIA for tomographic retrievals, we focus on the measurement mode that offers the highest temporal sampling, which is the dynamics mode of Table 1. As an example for the spectral resolution of the dynamics mode, simulated spectra for mid-latitude atmospheric conditions and 12 km tangent altitude are shown in Fig. 2. Even at this reduced spectral resolution, infrared emission features of important atmospheric

Towards a 3-D tomographic retrieval for GLORIA

J. Ungermann et al.

Title Page

Abstract

Introduction

Conclusions

References

Tables

Figures



Back

Close

Full Screen / Esc

Printer-friendly Version

Interactive Discussion



constituents are clearly visible (e.g. CO₂, CFC, CCl₄, H₂O, O₃, HNO₃, CH₄, N₂O, or PAN, which Weigel et al. (2010) successfully retrieved using the CRISTA-NF instrument).

The focus of this paper is to describe a methodology that enables 3-D tomographic retrievals using simulated GLORIA measurements and to show the principal feasibility of this via simplified numerical experiments.

3 A retrieval approach for large-scale inverse problems

The inverse problem in the field of atmospheric limb sounding is to retrieve an atmospheric state, usually a vertical profile, from a set of emission spectra, usually taken from different tangent heights. Given an atmospheric state $\mathbf{x} \in \mathbb{R}^n$ it is possible to model the radiative transfer and the instrument effects with a model F to generate simulated measurements $\mathbf{y} \in \mathbb{R}^m$. F represents the actual physics as accurately as possible, given the constraints of understanding of physical processes and instrument effects, but also performance constraints. The inverse problem then consists of deriving an atmospheric state from a set of noisy measurements, i.e.

$$\mathbf{y} = F(\mathbf{x}) + \boldsymbol{\epsilon} \quad (1)$$

with $\boldsymbol{\epsilon} \in \mathbb{R}^m$ representing the measurement errors. The current state-of-the-art in the field of atmospheric limb sounding is to measure and to retrieve 1-D profiles or 2-D vertical planes accordingly (e.g. Solomon et al., 1984; Livesey and Read, 2000; Carlotti et al., 2001; Steck et al., 2005; Carlotti et al., 2006). The general approach is independent of the dimensionality of the problem, but the computational complexity increases with the number of involved unknowns and measurements.

GLORIA allows to implement 3-D observation patterns in contrast to existing instruments. The associated 3-D tomographic reconstructions are extremely demanding on computational resources due to the large parameter space and the correspondingly

Towards a 3-D tomographic retrieval for GLORIA

J. Ungermann et al.

Title Page

Abstract

Introduction

Conclusions

References

Tables

Figures

⏪

⏩

◀

▶

Back

Close

Full Screen / Esc

Printer-friendly Version

Interactive Discussion



Towards a 3-D tomographic retrieval for GLORIA

J. Ungermann et al.

Title Page

Abstract

Introduction

Conclusions

References

Tables

Figures

◀

▶

◀

▶

Back

Close

Full Screen / Esc

Printer-friendly Version

Interactive Discussion



large amount of measurements required to properly resolve the volume. Many different approaches have been tried to efficiently perform such a tomographic inversion, the most popular in the medical field being the filtered back-projection (e.g. Natterer, 2001). However, as the line of sights of GLORIA measurements do not span regular planes and due to the arbitrary shape of the carrier's flight path, a more flexible approach prevalent for resolving seismic measurements based on non-linear iterative minimization has been chosen (e.g. Rodgers, 2000; Nolet, 2008).

The inversion of F presents a non-linear, ill-posed, and in many cases both under- and over-constrained inversion problem. One way to obtain a unique and physically reasonable solution is regularization. We use a standard Tikhonov regularization approach as described, e.g., by Rodgers (2000). In our nomenclature, $\mathbf{x}_a \in \mathbb{R}^n$ is the a priori knowledge about the state of the atmosphere, $\mathbf{S}_a \in \mathbb{R}^{n \times n}$ is a covariance matrix for the a priori state \mathbf{x}_a , $\mathbf{y} \in \mathbb{R}^m$ represents the vector of measurements and $\mathbf{S}_e \in \mathbb{R}^{m \times m}$ the covariance matrix of the measurement error. The method then computes a statistically optimal weighted average between the a priori information and the information contained in the measurements. The solution is calculated by minimizing the cost function $J: \mathbb{R}^n \mapsto \mathbb{R}$ with

$$J(\mathbf{x}) = (\mathbf{x} - \mathbf{x}_a)^T \mathbf{S}_a^{-1} (\mathbf{x} - \mathbf{x}_a) + (\mathbf{F}(\mathbf{x}) - \mathbf{y})^T \mathbf{S}_e^{-1} (\mathbf{F}(\mathbf{x}) - \mathbf{y}). \quad (2)$$

A simple Newton iteration for solving the equation $J'(\mathbf{x}) \stackrel{!}{=} 0$ gives the formula

$$\mathbf{x}_{i+1} = \mathbf{x}_i - J''(\mathbf{x}_i)^{-1} J'(\mathbf{x}_i) \quad (3)$$

Approximating the Hessian matrix $J''(\mathbf{x}_i)$ by dropping all terms involving the second derivative of F (as they are too costly to calculate and hopefully negligible as the problem at hand is only "slightly" non-linear) results in the well-know Gauss-Newton iteration scheme:

$$\mathbf{x}_{i+1} = \mathbf{x}_i - \left(\mathbf{S}_a^{-1} + \mathbf{F}'(\mathbf{x}_i)^T \mathbf{S}_e^{-1} \mathbf{F}'(\mathbf{x}_i) \right)^{-1} \cdot \left(\mathbf{S}_a^{-1} (\mathbf{x}_i - \mathbf{x}_a) + \mathbf{F}'(\mathbf{x}_i)^T \mathbf{S}_e^{-1} (\mathbf{F}(\mathbf{x}_i) - \mathbf{y}) \right) \quad (4)$$

Towards a 3-D tomographic retrieval for GLORIA

J. Ungermann et al.

Title Page

Abstract

Introduction

Conclusions

References

Tables

Figures

⏪

⏩

◀

▶

Back

Close

Full Screen / Esc

Printer-friendly Version

Interactive Discussion



The matrix \mathbf{S}_a^{-1} is effectively chosen and defined by our regularization and can be considered as a tuning parameter (see Sect. 3.2). This method only delivers a maximum likelihood estimate if \mathbf{S}_a corresponds to the actual a priori covariance, which generally is not available or accurate enough (especially for 2-D and 3-D problems). However, the statistical interpretation of the matrices and the results remains valid as long as \mathbf{S}_a fulfills the formal requirements of a covariance matrix, i.e. being symmetric and positive semi-definite. The matrix \mathbf{S}_e is assumed to be diagonal (or at least block-diagonal), which means that \mathbf{S}_e^{-1} has the same sparse structure and can be rather efficiently calculated.

In the following we will shortly present our forward model F , describe how our regularization matrix \mathbf{S}_a^{-1} is set up and how to efficiently implement the optimal estimation scheme for large tomographic problems.

3.1 Fast forward model and Jacobian calculation

For tomographic 3-D retrievals, the forward model needs to simulate many more measurements than is usual for a single conventional 1-D retrieval, so a fast forward model is of utmost importance.

A single measurement is generally simulated by casting multiple rays from the observer position, calculating the radiative transport along each ray and aggregating the resulting values according to a weighting function that is designed according to the field-of-view of the instrument. The re-use of a single ray for multiple measurements allows a significant reduction of computational effort for imager instruments. We therefore split the forward model F into a linear map $\mathbf{H} \in \mathbb{R}^{m \times p}$ and a non-linear function simulating the 1-D beams $P: \mathbb{R}^n \mapsto \mathbb{R}^p$ with $F(\mathbf{x}) = \mathbf{H} \cdot P(\mathbf{x})$. The matrix \mathbf{H} is generally extremely sparse and stored accordingly.

The function P is realized using the emissivity growth approximation (EGA) method (e.g. Weinreb and Neuendorffer, 1973; Gordley and Russel, 1981; Marshall et al., 1994). Our implementation of the EGA method was previously used as forward model

Towards a 3-D tomographic retrieval for GLORIA

J. Ungermann et al.

Title Page

Abstract

Introduction

Conclusions

References

Tables

Figures

◀

▶

◀

▶

Back

Close

Full Screen / Esc

Printer-friendly Version

Interactive Discussion



for retrievals for several satellite- and air-borne remote sensing experiments (e.g. Hoffmann et al., 2008, 2009; Eckermann et al., 2009; Hoffmann and Alexander, 2009). Compared with conventional line-by-line calculations this approach is about a factor 1000 faster, since the radiative transfer is calculated based on precalculated spectrally averaged values of emissivity stored in lookup tables. The emissivity look-up-tables for the forward model are prepared by means of exact line-by-line calculations utilizing the Reference Forward Model (RFM) (Dudhia et al., 2002). Processing actual GLORIA measurements of the troposphere will likely require additional measures to reduce the error introduced by the approximate EGA method (e.g. Francis et al., 2006).

As seen in (4), the employed inversion algorithm requires the Jacobian matrix of F (also called the Kernel matrix). Given a fast enough forward model and exploiting the sparsity of the Jacobian matrix (Ungermann et al., 2010), it is feasible to determine the Jacobian matrix via finite differences even for tomographic problems of the given size. The Jacobian matrix $F'(\mathbf{x})$ for typical tomographic 3-D problems is very sparse as a single measurement is influenced only by a small fraction of the volume defined by \mathbf{x} . In our 3-D setups, generally about 99% of the Jacobian matrix entries are zero.

3.2 Setup of regularization matrix

For the regularization matrix \mathbf{S}_a^{-1} , we use Tikhonov regularization matrices to assemble the inverse of a covariance matrix. This approach allows for an easy setup of \mathbf{S}_a^{-1} , but not for \mathbf{S}_a itself. In effect, the variances of \mathbf{S}_a cannot be directly set opposed to approaches defining \mathbf{S}_a according to some ad-hoc distribution, e.g. a Gaussian distribution (Tarantola, 2004). However, inverting a dense \mathbf{S}_a directly or indirectly is computational too costly, so we chose to define \mathbf{S}_a^{-1} instead.

We define four matrices \mathbf{L}_0 , \mathbf{L}_1^x , \mathbf{L}_1^y , and $\mathbf{L}_1^z \in \mathbb{R}^{n \times n}$ corresponding to regularization of zero-th moment and first moment in the three dimensions. Then \mathbf{S}_a^{-1} is set to

$$\mathbf{S}_a^{-1} = \left((\alpha_0)^2 \mathbf{L}_0^T \mathbf{L}_0 + (\alpha_1^x)^2 \mathbf{L}_1^{xT} \mathbf{L}_1^x + (\alpha_1^y)^2 \mathbf{L}_1^{yT} \mathbf{L}_1^y + (\alpha_1^z)^2 \mathbf{L}_1^{zT} \mathbf{L}_1^z \right) \quad (5)$$

with the tuning parameters α_0 , α_1^x , α_1^y , and $\alpha_1^z \in \mathbb{R}$. The matrix \mathbf{S}_a^{-1} becomes singular if α_0 is set to zero, so the Gauss-Newton iteration defined in (4) should be replaced by a Levenberg-Marquardt iteration scheme to ensure convergence (with more care in parameter choice the scheme presented in Appendix A2 should also be applicable).

The matrix \mathbf{L}_0 is simply the inverse of the a priori standard deviations. The \mathbf{L}_1 matrices are simple Tikhonov regularization matrices of first order, adjusted for the non-uniform grid size (see Appendix A1 for a detailed discussion). Together, the matrices penalize deviations of the retrieved profile from the a priori profile and of the three partial derivatives of the retrieved profile in the direction of the three spatial dimensions from the corresponding partial derivative of the a priori profile.

3.3 Iterative techniques for solving large-scale linear equation systems

The iteration formula (4) is ideal for tomographic retrievals, as all involved matrices are sparse matrices. This significantly reduces both memory consumption and computation time.

The matrix inversion seemingly implied in (4) is naturally not performed naively, but a linear equation system is solved instead. Using Cholesky- or QR-decompositions becomes quickly infeasible for tomographic problems, as it either consumes prohibitive amounts of computation time or becomes numerically unstable so that it requires special treatment.

The linear equation system in each step is defined by the matrix $\mathbf{C} \in \mathbb{R}^{n \times n}$:

$$\mathbf{C} = \left(\mathbf{S}_a^{-1} + \mathbf{F}'(\mathbf{x}_i)^T \mathbf{S}_e^{-1} \mathbf{F}'(\mathbf{x}_i) \right). \quad (6)$$

For our choice of \mathbf{S}_a^{-1} , this matrix is symmetric positive definite suggesting an iterative conjugate gradient scheme. As \mathbf{C} is most likely not very sparse due to the term $\mathbf{F}'(\mathbf{x}_i)^T \mathbf{S}_e^{-1} \mathbf{F}'(\mathbf{x}_i)$, we avoid calculating it altogether, as the generation itself is quite costly and consumes a large amount of memory. Gladly, the conjugate gradient algorithm does not require the matrix \mathbf{C} , but only the result of products of \mathbf{C} with given

Towards a 3-D tomographic retrieval for GLORIA

J. Ungermann et al.

Title Page

Abstract

Introduction

Conclusions

References

Tables

Figures

◀

▶

◀

▶

Back

Close

Full Screen / Esc

Printer-friendly Version

Interactive Discussion



vectors. This product can be cheaply provided by four matrix-vector products, i.e. multiplying the given vector first with $\mathbf{F}'(\mathbf{x}_i)$, then the result of this product with \mathbf{S}_e^{-1} and so on.

(4) also lends well to algorithmic differentiation methods that do not calculate the full Jacobian matrix, but offer a way to efficiently calculate the product of the Jacobian matrix or its transpose with a given vector.

As we found the convergence speed of the conjugate gradient method lacking for our 3-D tomographic setups (especially for multi-target setups involving targets of different magnitudes), we employed a simple Jacobi preconditioning scheme (e.g. Saad, 2003). Most pre-conditioners require full knowledge of the matrix \mathbf{C} . For the Jacobi preconditioning only the diagonal of \mathbf{C} is required, which can be calculated using only about $O(nm)$ multiplications if \mathbf{S}_e^{-1} is a diagonal matrix. If the non-diagonal elements of \mathbf{S}_e^{-1} are not zero and cannot be neglected, this preconditioning requires an additional multiplication of the Jacobian with \mathbf{S}_e^{-1} , i.e. $O(nm^2)$ multiplications neglecting the sparsity of the involved matrices.

The conjugate gradient scheme requires a convergence criteria to determine if the current solution is good enough. We abort the conjugate gradient scheme, as soon as the residuum has been reduced by a certain percentage. We found the Gauss-Newton scheme to converge faster, if for the first iterations only a small reduction of the residuum is required, tightening the convergence criteria as the Gauss-Newton iteration converged upon the solution. In addition to the outer Gauss-Newton iteration converging faster, this naturally also decreases the number of inner iterations used in the conjugate gradient scheme (see Appendix A2).

3.4 Memory-conserving diagnostics

We determine the retrieval diagnostics according to Rodgers (2000). This generally requires the calculation of the gain matrix \mathbf{G} that maps differences of measurements onto differences of retrieval result and the averaging kernel matrix \mathbf{A} that maps the true

Towards a 3-D tomographic retrieval for GLORIA

J. Ungermann et al.

Title Page

Abstract

Introduction

Conclusions

References

Tables

Figures

◀

▶

◀

▶

Back

Close

Full Screen / Esc

Printer-friendly Version

Interactive Discussion



atmospheric state onto the retrieval result. With $\hat{\mathbf{x}}$ being the retrieval result, the gain matrix is defined as

$$\mathbf{G} = \left(\mathbf{S}_a^{-1} + \mathbf{F}'(\hat{\mathbf{x}})^T \mathbf{S}_e^{-1} \mathbf{F}'(\hat{\mathbf{x}}) \right)^{-1} \mathbf{F}'(\hat{\mathbf{x}})^T \mathbf{S}_e^{-1} \quad (7)$$

and the averaging kernel matrix (also called resolution matrix in the field of seismology) is defined as

$$\mathbf{A} = \mathbf{G} \mathbf{F}'(\hat{\mathbf{x}}) = \left(\mathbf{S}_a^{-1} + \mathbf{F}'(\hat{\mathbf{x}})^T \mathbf{S}_e^{-1} \mathbf{F}'(\hat{\mathbf{x}}) \right)^{-1} \mathbf{F}'(\hat{\mathbf{x}})^T \mathbf{S}_e^{-1} \mathbf{F}'(\hat{\mathbf{x}}). \quad (8)$$

With \mathbf{x}_t being the true state of the atmosphere, the retrieval result can be expressed by the linear expression

$$\hat{\mathbf{x}} = \mathbf{A} \mathbf{x}_t + (\mathbf{I} - \mathbf{A}) \mathbf{x}_a + \mathbf{G} \mathcal{E}, \quad (9)$$

which gives the basis for the (linear) diagnostics.

The gain matrix \mathbf{G} can then be used to estimate the influence of measurement noise on the retrieval result: $\mathbf{S}_{\text{noise}} = \mathbf{G} \mathbf{S}_e \mathbf{G}^T$. The averaging kernel matrix can be used to deduce various interesting quantities, including measurement contribution and resolution (e.g. Rodgers, 2000; von Clarmann et al., 2009).

For large 2-D or 3-D setups, the full matrix-inversion in equations (7) and (8) is computationally too costly and furthermore numerically unstable. Further, even if the matrices could be reliably generated, they become too large to keep fully in memory. E.g., for our simple baseline setup (see Sect. 4.1), the full averaging kernel matrix alone would require about 80 Gigabyte of memory in double precision.

It is however possible to derive diagnostics for a single point without any matrix inversion as first demonstrated by Nolet (1985). Applying this approach onto Rodgers' more advanced diagnostics, for the diagnostics of a single point only the corresponding row of \mathbf{G} is needed to estimate the noise error (which is generally estimated using the corresponding diagonal element of $\mathbf{S}_{\text{noise}}$) and only the corresponding row of \mathbf{A} is needed to derive measurement contribution and resolution.

Towards a 3-D tomographic retrieval for GLORIA

J. Ungermann et al.

Title Page

Abstract

Introduction

Conclusions

References

Tables

Figures



Back

Close

Full Screen / Esc

Printer-friendly Version

Interactive Discussion



Towards a 3-D tomographic retrieval for GLORIA

J. Ungermann et al.

Title Page

Abstract

Introduction

Conclusions

References

Tables

Figures

◀

▶

◀

▶

Back

Close

Full Screen / Esc

Printer-friendly Version

Interactive Discussion



To derive a single row of \mathbf{A} and \mathbf{G} , only a single row of

$$\mathbf{C} = (\mathbf{S}_a^{-1} + \mathbf{F}'(\hat{\mathbf{x}})^T \mathbf{S}_e^{-1} \mathbf{F}'(\hat{\mathbf{x}}))^{-1}$$

is needed, as this row vector can then be multiplied using vector-matrix multiplications from the left to the right with $\mathbf{F}'(\hat{\mathbf{x}})^T \mathbf{S}_e^{-1}$, respectively $\mathbf{F}'(\hat{\mathbf{x}})^T \mathbf{S}_e^{-1} \mathbf{F}'(\hat{\mathbf{x}})$ to derive the rows of \mathbf{G} and \mathbf{A} .

As \mathbf{C}^{-1} is symmetrical, so is \mathbf{C} . This simplifies the problem, as columns of \mathbf{C} can be easily calculated using the same iterative linear equation system solver described in the preceding section, and using the proper unit vector for the right-hand-side.

Estimating the covariance of the smoothing error requires an actual covariance matrix describing the actual statistics of the atmosphere, which our ad-hoc covariance matrix cannot deliver. However, assuming that the employed covariance matrix were the true one, the smoothing error

$$\mathbf{S}_s = (\mathbf{A} - \mathbf{I}) \mathbf{S}_a (\mathbf{A} - \mathbf{I})^T \quad (10)$$

can also be computed for individual data points. The i th element of the diagonal of \mathbf{S}_s is the i th row of $(\mathbf{A} - \mathbf{I})$ multiplied with \mathbf{S}_a multiplied with the i th column of $(\mathbf{A} - \mathbf{I})^T$ (being naturally identical with the i th row of $(\mathbf{A} - \mathbf{I})$). The corresponding row of \mathbf{A} was already previously calculated and subtracting one for the subtraction of \mathbf{I} is trivial. The matrix-vector product with \mathbf{S}_a can be replaced by another application of the conjugate gradient scheme using \mathbf{S}_a^{-1} as equation system and the modified row of \mathbf{A} as right-hand-side.

Using this method, it is possible to retrieve diagnostic information for individual points of \mathbf{x} without keeping the full matrices \mathbf{G} or \mathbf{A} in memory or even fully generating them. For tomographic retrievals, it is too costly to determine the diagnostics for all points of the retrieval as this generally requires far more computation time than the retrieval itself. But for our tomographic setups, we found the diagnostic quantities to generally vary only slowly from point to point, so that one can use Monte-Carlo techniques to randomly sample a subset of \mathbf{x} to get quickly a good impression of the overall quality and characteristics of the retrieval and to determine the areas that deserve a closer look.

3.5 Discrete representation of the atmosphere

Large-scale, three-dimensional inversions require an efficient representation of the atmospheric state. Temperature, pressure, aerosol and a varying number of trace gasses need to be represented with sufficient detail over the whole volume from which emitted infrared radiance can reach the detector of the instrument. A simple extension of the typical one-dimensional discretization with linear interpolation for the representation of profiles has been used for the results in this paper. A cuboid of atmosphere is discretized by sampling it at the cross-points of a rectilinear grid. Between the grid points, the value is linearly interpolated between the eight corners of the cube. The grid needs not to be fully regular and thereby allows for a denser representation in the area with the most measurements (in our setup the center) and a sparser representation at other places.

4 Numerical experiments

This section describes several numerical experiments performed for the GLORIA instrument. Their purpose is on the one hand to demonstrate the feasibility of large-scale 3-D tomographic inversions using the methodology presented in Sect. 3, on the other hands to explore the tomographic capabilities of the GLORIA instrument itself.

4.1 Simulation setup

One intent of the simulations is to demonstrate the feasibility of tomographic retrievals. To that end, we employ a three-dimensional GEM-AQ (Global Environmental Multi-scale model, Air Quality; (Kaminski et al., 2008)) data set as our test atmosphere, which is used to generate simulated measurements of GLORIA. The general idea is to reconstruct the original 3-D atmosphere from simulated measurements. To keep the inversion rather simple, only a single target shall be reconstructed. We chose ozone instead of the simpler and perhaps more natural temperature as it can be used as

Towards a 3-D tomographic retrieval for GLORIA

J. Ungermann et al.

Title Page

Abstract

Introduction

Conclusions

References

Tables

Figures



Back

Close

Full Screen / Esc

Printer-friendly Version

Interactive Discussion



Towards a 3-D tomographic retrieval for GLORIA

J. Ungermann et al.

Title Page

Abstract

Introduction

Conclusions

References

Tables

Figures



Back

Close

Full Screen / Esc

Printer-friendly Version

Interactive Discussion



a tracer to examine the UTLS air exchange and therefore fits to the scientific focus of GLORIA. According to GEM-AQ model simulations of the synoptic situation during the European heat wave of July 2006, ozone also exhibits quite interesting horizontal structures close to a tropopause fold (Struzewska and Kaminski, 2008). Figure 3 shows part of one such structure, an ozone filament over the north west of France at 200 hPa with a horizontal extension of about 250 km \times 2000 km. This filament is a remnant of upper stratospheric air mixed into the lower-most stratosphere. Ozone values inside this filament are about 50% increased in comparison to the ambient air.

The horizontal sampling of the GEM-AQ data set is about 12 km while the vertical resolution in the UTLS region is about 1 km. For our simulation we picked a volume from 8.64° E to 8.64° W and from 40.00° N to 52.00° N. For generating the simulated measurements, this region is sampled with a horizontal grid size of \approx 11 km. For the inversion, the atmosphere is sampled with this fine grid only from 2.88° E to 2.88° W and from 44.00° N to 48° N. The outer region is covered by only three samples on each side to reduce the number of unknowns. The vertical sampling is 1 km from 1 km to 6 km altitude, 0.25 km from 6 km to 16 km, 1 km from 16 km to 20 km, and 2 km from 20 km to 60 km. The retrieval shall derive ozone in the vertical region from 4 km to 20 km over the full horizontal extent from the simulated measurements. The inversion is simplified by assuming perfect knowledge of the top-column above 20 km and all entities except ozone in the retrieved area. In this idealized study, we concentrate on the properties of the tomographic retrieval method and therefore neglect other uncertainties.

We use temperature, pressure, CCl₄, CO₂, ClONO₂, H₂O, HNO₃ and ozone in our simulations as these contribute most of the radiation around 778.5 cm⁻¹. As not all these trace gases are contained in the GEM-AQ model data, we take CCl₄, CO₂, ClONO₂, and HNO₃ from mid-latitude profiles of Remedios et al. (2007). For this study, we assume clear-sky conditions and no advection.

The employed regularization scheme uses the ozone mid-latitude values and standard deviations of Remedios et al. (2007) for x_a and L_0 . As initial guess x_0 , we take ozone values for polar conditions from the same source. The parameter α_0 has been

Towards a 3-D tomographic retrieval for GLORIA

J. Ungermann et al.

Title Page

Abstract

Introduction

Conclusions

References

Tables

Figures

⏪

⏩

◀

▶

Back

Close

Full Screen / Esc

Printer-friendly Version

Interactive Discussion



set to 0.1 to reduce the bias towards the a priori profile. The retrievals seem to not require this term, but we added it to ensure that \mathbf{S}_a^{-1} is a regular, well-conditioned matrix. As it is also symmetric and positive definite, it is invertible and its inverse can be interpreted as a covariance matrix. The parameter α_1^z has been set to 4×10^5 and α_1^x and α_1^y both to 8×10^8 . One can loosely interpret the α_1 parameters as the product of the “typical” standard deviation of ozone times a “correlation length”. Using the standard deviation of ozone at 12 km from Remedios et al. (2007) as a basis, this corresponds roughly to a vertical correlation length of ≈ 200 m and a horizontal correlation length of ≈ 450 km. A parameter study of these parameters showed that these relative weights deliver the visually best results and that the overall strength is L-curve optimal. The retrieval results are robust against small changes of the tuning parameters. Reducing the horizontal tuning parameters below, e.g., 2×10^8 leads to noticeable noisiness and increasing it over 16×10^8 to noticeable smoothing (both not depicted). The vertical smoothing seems not to be essential and in fact, the presented retrievals converge to similar results without vertical smoothing. It has however a noticeable effect on the retrieval result above the instrument altitude of 15 km, where insufficient measurement information is available and the chosen regularization parameter has been chosen as the smallest value, for which acceptable results in that height range are retrieved. The resulting system matrix \mathbf{C} has a condition of approximately 450 000, which allows for a quick convergence of the conjugate gradient scheme.

The simulations presented here use measurements, which are each averaged over two rows of the GLORIA detector, i.e. over 256 detector pixels and thereby deviate slightly from the envisioned co-adding of the “dynamics” mode. As the co-adding is performed off-line, this requires no change to the instrument whatsoever. We average over two rows instead of a single one largely because our atmosphere model does not offer such fine vertical details in the region of interest and we could significantly reduce simulation times by this. In the presence of clouds, affected detector pixels would be removed from the measurement. The measurement noise is modelled by a stochastic additive offset component and a stochastic multiplicative gain component. This assumes

Towards a 3-D tomographic retrieval for GLORIA

J. Ungermann et al.

Title Page

Abstract

Introduction

Conclusions

References

Tables

Figures

⏪

⏩

◀

▶

Back

Close

Full Screen / Esc

Printer-friendly Version

Interactive Discussion



that any systematic component can be handled by calibration or during the retrieval itself. According to the specification of GLORIA, the offset component for 256 averaged pixels is expected to have a standard deviation of $0.1875 \times 10^{-5} \text{ W}/(\text{m}^2 \text{ sr cm}^{-1})$. For the gain component for 256 averaged pixels, we assume that a stochastic component with a standard deviation of 0.1 percent remains. We perform both simulations with and without added noise according to this specification as presented below. The simulations use only a single channel at 778.5 cm^{-1} , which was previously used by Weigel et al. (2010) to derive ozone from CRISTA-NF measurements. This channel is optically thin in the troposphere, close to the CO_2 Q-branch at $12.6 \mu\text{m}$ usually employed for deriving temperature, and relatively unaffected by water vapor. A realistic setup would naturally need more channels to compensate for instrument effects, aerosol, etc. On the other hand, at least for O_3 it is possible to add further channels with strong O_3 contribution to reduce measurement noise. A single image with the described 64 individual measurements will be generated by GLORIA every $\approx 3 \text{ s}$. For the description of the employed panning, see Sect. 4.3.

Retrieving this baseline setup uses roughly 60 CPU h, respectively 9 h of real time on an eight-core machine consuming only about 1.3 Gb of memory total. Thereby about 90 percent of the computation time is used for calculating the Jacobian matrix twice.

4.2 Analysis of baseline setup

We first present and analyze the baseline setup in greater detail. The aircraft is assumed to fly a circle with $\approx 400 \text{ km}$ diameter over the north of France in 15 km height as is depicted in Fig. 4. Within this circle, at 12 km height, an ozone filament is clearly visible (shown in Fig. 3), which is the “target” of the retrieval. Within this paper, the tangent points of measurements close to the cut plane are usually drawn as small white circles. Their presence indicates the part of the volume where good agreement between the retrieved atmospheric state and the true atmospheric state is expected.

Towards a 3-D tomographic retrieval for GLORIA

J. Ungermann et al.

[Title Page](#)[Abstract](#)[Introduction](#)[Conclusions](#)[References](#)[Tables](#)[Figures](#)[Back](#)[Close](#)[Full Screen / Esc](#)[Printer-friendly Version](#)[Interactive Discussion](#)

The diagnostic information for the baseline setup was derived with the technique described in Sect. 3.4. Only the depicted planes were calculated and required several times as much computation time as the retrievals themselves (one depicted plane including all diagnostic entities costs ≈ 250 CPU hours). Figure 5 shows the retrieval result for the baseline setup with added instrument noise. Figure 5a shows that the filament is qualitatively well reproduced and Fig. 5b indicates that the error in the region covered with tangent points is well below ± 5 percent. The vertical cuts in Fig. 5c and d show also a good agreement at other heights. The influence of noise on the retrieval result can be well seen in Fig. 6, where the same setup is simulated without instrument noise, marking it as important to further reduce the noise, e.g. by adding more spectral points. Simulations indicate that decreasing the noise by means of averaging over time does not improve the result as fewer measurements deliver less spatial resolution. The given simulation setup has a high measurement contribution close to one within the convex region spanned by the tangent points (not depicted) indicating a negligible influence of a priori information. The influence of instrument noise at 12 km height is generally less than ≈ 3 ppb in the region covered by tangent points.

The resolution is determined by calculating the FWHM of the corresponding row of the averaging kernel matrix in the three dimensions. This is naturally only a meaningful measure, if the volume where the row of the averaging kernel matrix is larger than half its maximum has an approximately ellipsoid shape. We found this to be the case within the region covered by tangent points, outside this region, it may also be, e.g., of a “banana” shape, so the resolution cannot be easily expressed with just three numbers. That aside, the vertical resolution is ≈ 325 m in the region covered by tangent points at 12 km height as is shown in Fig. 7. As at 12 km height, the best horizontal coverage with tangent points is given, the achievable vertical resolution also peaks here. Simulations with a finer height grid of 125 m and 128 distinct vertical measurements per image (not depicted) indicate that a vertical resolution of ≈ 200 m seems possible. In Fig. 7b one can see that the achievable vertical resolution in the “tangent point holes” at the bottom and at the top of the analyzed volume increases rapidly due to a lack of

measurements. This suggests that the radius of the circle, respectively the height of the aircraft, which determine the height region with best tangent point coverage, should be chosen according to the height region, one is most interested in.

The horizontal resolution in longitudinal direction in Fig. 8a is around 20 km to 30 km indicating that the chosen sampling grid is fine enough to resolve all information present. The low values at the upper and lower part of Fig. 8a result from the fact that the shape of the rows of the averaging kernel matrix in this region deteriorates from a roughly ellipsoid shape towards something resembling more “bananas”, which extend roughly in north-south direction. Correspondingly, the horizontal resolution in latitudinal direction is quite similar to that in longitudinal direction within the region covered by tangent points, but increases rapidly towards the north and south and is deceptively low towards the east and west. Figure 8b indicates that the horizontal resolution is best in the middle of the volume, where the air volume is seen from most angles. Towards the border, especially to the lower left and lower right, the coverage decreases and therewith also the horizontal resolution. By tuning the regularization parameters (not depicted), it is possible to shift information between vertical resolution, horizontal resolution and measurement noise. We found the current setup sufficient for our purposes and reserve a thorough analysis of the regularization scheme for future studies.

4.3 Effect of panning

An innovative new feature of the GLORIA instrument is the ability to point the detector in different horizontal directions without changing the flight direction of the aircraft itself to enable 3-D tomographic reconstructions.

We examined the effect of panning on the tomographic reconstruction to determine, in which way this feature actually benefits the retrieval result. The baseline setup described in Sect. 4.2 made use of the full GLORIA panning capability by moving the detector by 4° between taking two images and going back to 45° as soon as an angle of 135° is reached. Figure 9 shows an exemplary retrieval without any panning, i.e. fixing the instrument viewing direction to 90° like a conventional instrument would

Towards a 3-D tomographic retrieval for GLORIA

J. Ungermann et al.

Title Page

Abstract

Introduction

Conclusions

References

Tables

Figures



Back

Close

Full Screen / Esc

Printer-friendly Version

Interactive Discussion



Towards a 3-D tomographic retrieval for GLORIA

J. Ungermann et al.

[Title Page](#)[Abstract](#)[Introduction](#)[Conclusions](#)[References](#)[Tables](#)[Figures](#)[Back](#)[Close](#)[Full Screen / Esc](#)[Printer-friendly Version](#)[Interactive Discussion](#)

measure. The strength of the regularization has not been changed by, e.g., increasing the horizontal regularization strength to retain comparability of the results. As can be seen in Fig. 9a, the tangent points of measurements do not span a volume but are located on a 2-D surface in space. Consequently, the retrieval does not deliver to a good representation of the true atmosphere, which we were unable to significantly improve by, e.g., tuning the regularization. Figure 9b depicts the retrieved atmospheric state. It seems difficult to discern the original filament from this data as the relative error exceeds -10% even close to the tangent points in the middle.

Better results can be achieved with a reduced panning in contrast to no panning at all. Figure 10 depicts a retrieval setup, in which the panning is reduced to the range from 65° to 115° relative to the flight direction, but the filament is still difficult to discern. Our simulations indicate that the results improve the wider the angle gets, with an optimum close to the angle available for GLORIA. Extending the fan further (not depicted), more rays pass through air volumes that are not viewed from multiple angles and are therefore difficult to resolve three-dimensionally. In addition, these rays are missing on the inside of the flight path, reducing the retrieval quality there.

A second consideration must be given to the panning step size, in which the available panning angle is used. While the simulations did not show the result being very sensitive to it, it has been found that the result improves the more evenly distributed the tangent points of the individual measurements are. Reducing the step size increases the number of tangent point “circles”, but reduces the number of points on the “circle”. For the “dynamics mode”, we found the natural step size of 4° optimal for our setup, while, e.g., for the “chemistry mode”, which requires longer time for a single measurement, a larger step size might be chosen.

In effect, the ability to pan the instrument is an invaluable asset for tomographic reconstruction.

4.4 Choice and effect of flightpath

The choice of flightpath is of large importance for 3-D tomographic retrievals. Closed or nearly closed paths seem to be able to provide a good reconstruction of the true atmospheric state, similar to computer tomography. In our experiments the true atmospheric state was only reproduced accurately in those parts of the volume, where the tangent points of measurements are located. In effect, the flightpath and panning (see Sect. 4.3) should be chosen accordingly. A perfectly circular flight path gives the most regular distribution of tangent points as presented in Sect. 4.1. As such a flight path may not be feasible for practical concerns, we will discuss in the following how approximations to the ideal circular track work.

Exemplary, we present two such approximations, one being a square flightpath and one being an octagonal flight path. Figure 11 depicts a simple square track in the same style as Fig. 4. One can see that the area below the corners of the square are devoid of measurements while there are large extensions below the sides of the square (the latter ones could be avoided by influencing the panning in a more complicated way than employed here). Figure 11b shows the relative error of the retrieval result for this flight path at 12 km height. One can see good agreement where tangent points are located, but the corners – being devoid of tangent points – are already quite erroneous. Calculating horizontal resolution (not depicted) indicates that the values in the corners are nearly purely derived by horizontal smoothing. Figure 12 shows in comparison an octagonal flight path, which resembles a circular track more closely. Figure 12a depicts again the location of tangent points in space and time and Fig. 12b shows the relative error of the retrieval result at 12 km height. The area covered by tangent points is larger, corresponding with a larger area of good agreement. In principle, this seems to be a good compromise as a larger area is covered by tangent points so that the true ozone structure can actually be identified better than in Fig. 3a. However the horizontal resolution is generally higher than for the baseline setup and the vertical resolution quickly becomes larger in between the “petals”.

Towards a 3-D tomographic retrieval for GLORIA

J. Ungermann et al.

Title Page

Abstract

Introduction

Conclusions

References

Tables

Figures



Back

Close

Full Screen / Esc

Printer-friendly Version

Interactive Discussion



Both presented approximations to a circular flight track seem usable and could possibly be optimized further by adjusting, e.g., the panning. One seems to be able to trade horizontal resolution for covered volume, so the flight path can be determined according to scientific need. Therefore, it is expected that a workable flight track can be found for campaigns given typical restrictions imposed by aerospace regulations and scientific goals.

4.5 Comparison with individual 1-D retrievals

The tomographic retrieval is more robust in the presence of horizontal inhomogeneity than conventional 1-D retrievals.

To compare the tomographic approach with conventional retrievals, we used each individual image of the standard setup to perform a single 1-D retrieval. To exclude secondary representation effects, only ozone within the retrieval height range was kept 3-D, everything else was made horizontally homogeneous. We found that the 1-D retrievals required a stronger vertical regularization (i.e. $\alpha_1^z = 4 \times 10^6$) as the regularizing influence of the horizontal smoothing is missing. Figure 13 depicts exemplary the results of the 1-D retrievals at 12 km height with the true atmosphere as background. One sees clearly that ozone is severely underestimated at several places. Even very closely spaced 1-D retrievals deliver vastly varying results depending on the direction in which the image was taken. Profiles underestimating ozone are generally derived from images pointing northwards and profiles overestimating it are generally pointed southwards. Increasing the strength of the vertical smoothing further, the noisiness of the results decreases at the cost of an increasingly reduced vertical resolution. However, the systematic under- and overestimation is not affected by the regularization.

To gain deeper insight into the reason for this deviations, we selected a single retrieval with an underestimation of $\approx 20\%$ indicated by a broad black circle in Fig. 13 for analysis. Figure 14 shows the rays of the corresponding image together with the ozone values along the line-of-sights. As ozone has a strong vertical gradient, the values have been horizontally normalized to the ozone value being closest to the tangent point

Towards a 3-D tomographic retrieval for GLORIA

J. Ungermann et al.

Title Page

Abstract

Introduction

Conclusions

References

Tables

Figures



Back

Close

Full Screen / Esc

Printer-friendly Version

Interactive Discussion



respectively the horizontal instrument location above 15 km. One can see a strong horizontal structure with ozone concentrations decreasing away from the instrument. Figure 15b shows the row of the 1-D averaging kernel matrix corresponding to the value at 12 km. One can see the expected vertical averaging, but this is not the reason for the underestimation as the ozone concentrations above and below 12 km are quite similar. Only a 2-D averaging kernel matrix gives insight into this problem, as only this models the mapping of the true (in this case and actually always 2-D) atmosphere onto the retrieval result. This can be simply generated by using the 1-D gain matrix shown in Fig. 15a and a 2-D Jacobian matrix. To generate the latter, we generated a 2-D atmosphere with the same height grid and a 5 km horizontal grid. By multiplying the 1-D gain matrix with the 2-D Jacobian matrix, one gains an averaging kernel matrix describing how the 2-D true atmospheric state is mapped onto the 1-D retrieval result as is shown in Fig. 16. A similar technique was used by von Clarmann et al. (2009) to estimate the horizontal resolution of MIPAS. Accumulating the values belonging to the same height delivers a matrix identical to the 1-D averaging kernel matrix of Fig. 15b. The clearly visible horizontal oscillations above 12 km sum up horizontally to (nearly) zero but still reduce the retrieved value due to the gradient and strong concentration of ozone at those heights. The oscillations itself is the consequence of the averaging kernel matrix \mathbf{A} being a linear combination ($\mathbf{A} = \mathbf{G}\mathbf{F}'(\hat{\mathbf{x}})$) of the rows of the Jacobian matrix, i.e. the weighting functions, which are of a curved shape. Figure 15a shows a row of the gain matrix; it depicts the coefficients used to add up the weighting functions (rows of the Jacobian matrix) to generate the row of the averaging kernel matrix for 12 km. It is a weighted average of the measurements with tangent points close to 12 km. Figure 16a shows one such 2-D weighting function. The corresponding 1-D weighting function consists of the accumulation of values of a row belonging to the same height. One can see that its maximum lies at the tangent point, but significant contributions are also present at higher altitudes. As the sum of just these weighting functions would therefore stay positive for several kilometers above 12 km and a bit below, some weighting functions at those higher and lower heights are subtracted to

Towards a 3-D tomographic retrieval for GLORIA

J. Ungermann et al.

[Title Page](#)[Abstract](#)[Introduction](#)[Conclusions](#)[References](#)[Tables](#)[Figures](#)[◀](#)[▶](#)[◀](#)[▶](#)[Back](#)[Close](#)[Full Screen / Esc](#)[Printer-friendly Version](#)[Interactive Discussion](#)

compensate, which causes the negative swings in Fig. 15a. As a result the row of the 1-D averaging kernel matrix depicted in Fig. 15b approximates a delta-function.

It is now clear, what causes the ≈ 20 percent underestimation in the case at hand. The horizontal oscillations of the 2-D averaging kernel matrix in combination with the decreasing ozone concentrations away from the instrument cause this underestimation. The effect is especially pronounced as ozone concentrations increase with height and oscillations in the 2-D averaging kernel far above the retrieved value still contribute. For trace gas species that remain approximately constant or decrease in concentration the effect should be less pronounced due to the decrease in air pressure with height. The same problem has affected the evaluation of MIPAS (Michelson Interferometer for Passive Atmospheric Sounding) measurements as demonstrated by Kiefer et al. (2010). Naturally, the oscillations of the 2-D averaging kernel matrix at higher altitudes contribute only noticeably to the result, if the atmosphere is not horizontally homogeneous.

In contrast, the 3-D retrieval is able to use more measurements and thereby more weighting functions in the construction of the averaging kernel matrix. This increases the vector space spanned by the weighting functions and thereby offers better approximations to the desired delta functions. Where a 3-D retrieval is not possible or desired, the 2-D averaging kernel matrix can be used to estimate the errors caused by wrongly assuming horizontal inhomogeneity for 1-D retrievals depending on assumptions about existing gradients.

5 Conclusions

We introduced a methodology allowing for efficient tomographic retrievals from LIMB measurements that can be applied to both satellite- and air-borne instruments. We demonstrated how the use of sparse matrices combined with iterative solvers deliver in an efficient manner a solution to the non-linear, ill-posed problem of tomography. We also showed how the result of such an inversion can be analyzed using the powerful

Towards a 3-D tomographic retrieval for GLORIA

J. Ungermann et al.

Title Page

Abstract

Introduction

Conclusions

References

Tables

Figures



Back

Close

Full Screen / Esc

Printer-friendly Version

Interactive Discussion



Towards a 3-D tomographic retrieval for GLORIA

J. Ungermann et al.

Title Page

Abstract

Introduction

Conclusions

References

Tables

Figures

◀

▶

◀

▶

Back

Close

Full Screen / Esc

Printer-friendly Version

Interactive Discussion



diagnostic tools of Rodgers (2000) without generating the dense gain and averaging kernel matrices for (a subset of) all data points. The presented numerical inversion scheme is able to efficiently handle the massive amount of measurements and unknowns of tomographic retrievals and is both able to handle the described 3-D setups, but is also well suited for 2-D retrievals of satellite measurements.

We employed this method on simulated measurements of the GLORIA instrument to demonstrate its capability to three-dimensionally resolve air volumes. The new GLORIA instrument combines an infrared 2-D detector array with a Michelson interferometer mounted in a highly flexible gimbal and is unique in its high spatial and spectral resolution and its ability to scan the line-of-sight (LOS) 90° horizontally. This is a significant advance compared to previous limb sounders, which are limited by their restricted measurement geometry. An ozone filament at 12 km found in GEM-AQ simulations served as a test setup.

We found that using a nearly circular flightpaths, the 3-D structure of the ozone filament could be qualitatively well reproduced in the region well covered by tangent points of measurements. As a perfectly circular flight track is probably infeasible, we examined different closed curves and found that also approximations to a circle deliver very useful results. A 3-D resolution of ≈ 325 m vertically and of ≈ 25 km \times 25 km horizontally was achieved in our test retrievals. The vertical resolution can likely be improved to 200 m with a different setup.

One of the innovative features of the GLORIA instrument is its ability to horizontally pan the LOS of the instrument away from the typical angle of 90° relative to the flight direction of its carrier. It was demonstrated that this feature is a key component that enables the tomographic retrieval capability.

Finally, we set up a series of conventional 1-D retrievals based on the assumption of horizontal homogeneity. We found that these retrievals were subject to large systematic errors depending on the direction of the LOS. We used a 2-D averaging kernel matrix to analyze the 1-D retrieval and found that the 2-D averaging kernel matrix is subject to horizontal oscillations, which affect the retrieval result in the presence of

strong gradients and high concentrations in upper layers. This affects especially the retrieval of ozone but should also be considered for other species. A tomographic retrieval can use more measurements from different angles to subdue these oscillations and derive a better inversion result.

5 The GLORIA instrument should be able to derive highly resolved 3-D volumes of the UTLS enabling a better understanding of meso-scale processes and structures in this region. The combination of the 2-D detector array and the ability to pan the LOS are able to deliver sufficient measurements from different angle to achieve a 3-D reconstruction with vertical resolution of ≈ 200 m and horizontal resolution of ≈ 25 km. 10 This should allow GLORIA to deliver results with a spatial resolution, which is unprecedented for current limb sounders.

Appendix A

A1 Setup of L_1^z

15 The three-dimensional, rectilinear grid is defined by three vectors $\mathbf{g}^x \in \mathbb{R}^{n_x}$, $\mathbf{g}^y \in \mathbb{R}^{n_y}$ and $\mathbf{g}^z \in \mathbb{R}^{n_z}$ that consist of the ordered (ascending in our implementation) coordinates (in our setup longitude for \mathbf{g}^x , latitude for \mathbf{g}^y and altitude for \mathbf{g}^z). The elements of the state space vector \mathbf{x} are ordered also according to the coordinates, varying fastest in altitude (z) and slowest in latitude (x). Last, three maps h_x , h_y and h_z are needed that map the coordinates of the i -th element of \mathbf{x} onto the corresponding index of the coordinate in the coordinate vectors \mathbf{g}^x , \mathbf{g}^y or \mathbf{g}^z . E.g., if the x -coordinate of the i -th element of \mathbf{x} would be the smallest one contained in the grid, the function h_x would map i onto the index 0, as the first element of \mathbf{g}^x is the smallest x -coordinate. Here, 20 we also use the convention that g_i^x denotes the i -th element of \mathbf{g}^x .

Towards a 3-D tomographic retrieval for GLORIA

J. Ungermann et al.

Title Page

Abstract

Introduction

Conclusions

References

Tables

Figures

◀

▶

◀

▶

Back

Close

Full Screen / Esc

Printer-friendly Version

Interactive Discussion



Towards a 3-D tomographic retrieval for GLORIA

J. Ungermann et al.

Title Page

Abstract

Introduction

Conclusions

References

Tables

Figures

◀

▶

◀

▶

Back

Close

Full Screen / Esc

Printer-friendly Version

Interactive Discussion



With $\mathbf{L}_1^x = (l_{i,j}^x)_{i,j}$, then

$$l_{i,j}^x = \begin{cases} -1/|\mathbf{g}^x_{h_x(i)+1} - \mathbf{g}^x_{h_x(i)}| & \text{if } i = j \text{ and } h_x(i) < n_x - 1 \\ 1/|\mathbf{g}^x_{h_x(i)+1} - \mathbf{g}^x_{h_x(i)}| & \text{if } h_x(i) + 1 = h_x(j), h_x(i) < n_x - 1, h_y(i) = h_y(j), \text{ and } h_z(i) = h_z(j) \\ 0 & \text{else} \end{cases} \quad (\text{A1})$$

Please note that the absolute value function $|\cdot|$ in this case shall also imply a conversion to meter (where applicable), which means that, e.g., the same difference in longitude results in different values for points at different latitudes. The first term describes the main diagonal, the second term a side diagonal. In case of multi-target retrievals, an additional condition must ensure that the entry is zero if i and j describe different target types and a row-scaling must be introduced that introduces different weights for each target type as described by Steck et al. (2005) for 2-D regularization. We found the inverse of the typical standard deviation of a target to be a useful first guess for such a scaling factor. It is also possible to introduce an altitude- or altogether location-dependent regularization by scaling the rows of the \mathbf{L} matrices. The matrices \mathbf{L}_1^y and \mathbf{L}_1^z can be likewise constructed.

Multiplying the matrix \mathbf{L}_1^x with \mathbf{x} corresponds to computing the partial derivative $\partial/\partial x$ of the atmospheric profile using finite differences using the closest neighboring point. It is straightforward to extend this approach to include higher moments.

A2 Parametrization of the conjugate gradient scheme

Combining a Newton scheme with a conjugate gradient method as we describe in Sect. 3.3 exhibits under certain conditions itself regularizing properties (Hanke, 1997). While this in itself may not be desired, it shows some useful properties to reduce the amount of time required for the inversion. While the most computation time in

choices based on the norm of the current gradient of the cost function (e.g. Nocedal and Wright, 2006).

Some exemplary results are depicted in Fig. 17. The initial required reduction of the residuum is 0.1, meaning that the residuum should be reduced until its norm is smaller than 10 percent of the norm of the r.h.s. Depicted is how the number of outer and inner iterations changes if the adjustment factor is modified. For an adjustment factor smaller than 1.2, the outer iteration stops with a negligibly larger value of the cost function (with a relative error of 0.01 percent), which could be fixed by adjusting the convergence criteria of the outer iteration. For smaller reduction and adjustment factors than depicted, the number of necessary outer iterations increases significantly. The figure is typical for other initial required reduction values. There is usually an optimum, where the number of outer iterations is minimal while the number of required inner iterations steadily increases.

Acknowledgements. We sincerely thank A. Dudhia, Uni. Oxf., for providing us with the reference forward model (RFM). We also thank the many unmentioned members of the GLORIA team involved in making this instrument a reality.

References

Cairo, F., Pommereau, J. P., Law, K. S., Schlager, H., Garnier, A., Fierli, F., Ern, M., Streibel, M., Arabas, S., Borrmann, S., Berthelier, J. J., Blom, C., Christensen, T., D'Amato, F., Di Donfrancesco, G., Deshler, T., Diedhiou, A., Durry, G., Engelsen, O., Goutail, F., Harris, N. R. P., Kerstel, E. R. T., Khaykin, S., Konopka, P., Kylling, A., Larsen, N., Lebel, T., Liu, X., MacKenzie, A. R., Nielsen, J., Oulanowski, A., Parker, D. J., Pelon, J., Polcher, J., Pyle, J. A., Ravegnani, F., Rivière, E. D., Robinson, A. D., Rckmann, T., Schiller, C., Simões, F., Stefanutti, L., Stroh, F., Some, L., Siegmund, P., Sitnikov, N., Vernier, J. P., Volk, C. M., Voigt, C., von Hobe, M., Viciani, S., and Yushkov, V.: An introduction to the SCOUT-AMMA stratospheric aircraft, balloons and sondes campaign in West Africa, August 2006: rationale and roadmap, *Atmos. Chem. Phys.*, 10, 2237–2256, doi:10.5194/acp-10-2237-2010, 2010.

Towards a 3-D tomographic retrieval for GLORIA

J. Ungermann et al.

Title Page

Abstract

Introduction

Conclusions

References

Tables

Figures

◀

▶

◀

▶

Back

Close

Full Screen / Esc

Printer-friendly Version

Interactive Discussion



**Towards a 3-D
tomographic retrieval
for GLORIA**

J. Ungermann et al.

[Title Page](#)[Abstract](#)[Introduction](#)[Conclusions](#)[References](#)[Tables](#)[Figures](#)[◀](#)[▶](#)[◀](#)[▶](#)[Back](#)[Close](#)[Full Screen / Esc](#)[Printer-friendly Version](#)[Interactive Discussion](#)

Carlotti, M., Dinelli, B. M., Raspollini, P., and Ridolfi, M.: Geo-fit approach to the analysis of limb-scanning satellite measurements, *Appl. Optics*, 40, 1872–1885, doi:10.1364/AO.40.001872, 2001. 2998, 3000

Carlotti, M., Brizzi, G., Papandrea, E., Prevedelli, M., Ridolfi, M., Dinelli, B. M., and Magnani, L.: GMTR: Two-dimensional geo-fit multitarget retrieval model for Michelson Interferometer for Passive Atmospheric Sounding/Environmental Satellite observations, *Appl. Optics*, 45, 716–727, doi:10.1364/AO.45.000716, 2006. 3000

de F. Forster, P. M., and Shine, K. P.: Radiative forcing and temperature trends from stratospheric ozone changes, *J. Geophys. Res.*, 102, 10841–10855, doi:10.1029/96JD03510, 1997. 2996

Drummond, J. R., Houghton, J. T., Peskett, G. D., Rodgers, C. D., Wale, M. J., Whitney, J., and Williamson, E. J.: The stratospheric and mesospheric sounder on Nimbus 7, *Phil. Trans. Royal Soc. London*, 296, 219–241, doi:10.1098/rsta.1980.0166, 1980. 2997

Dudhia, A., Morris, P. E., and Wells, R. J.: Fast monochromatic radiative transfer calculations for limb sounding, *J. Quant. Spectrosc. Ra.*, 74, 745–756, doi:10.1016/S0022-4073(01)00285-0, 2002. 3003

Eckermann, S. D., Hoffmann, L., Höpfner, M., Wu, D. L., and Alexander, M. J.: Antarctic NAT PSC belt of June 2003: Observational validation of the mountain wave seeding hypothesis, *Geophys. Res. Lett.*, 36, doi:10.1029/2008GL036629, 2009. 3003

ESA: Candidate Earth Explorer Core Missions – Report for Assessment: PREMIER - PProcess Exploitation through Measurements of Infrared and millimetre-wave Emitted Radiation, SP-1313/5, ESA Publications Division, ESTEC, Keplerlaan 1, 2200 AG Noordwijk, The Netherlands, 2008. 2997, 2998

Fischer, H., Birk, M., Blom, C., Carli, B., Carlotti, M., von Clarmann, T., Delbouille, L., Dudhia, A., Ehhalt, D., Endemann, M., Flaud, J. M., Gessner, R., Kleinert, A., Koopman, R., Langen, J., López-Puertas, M., Mosner, P., Nett, H., Oelhaf, H., Perron, G., Remedios, J., Ridolfi, M., Stiller, G., and Zander, R.: MIPAS: an instrument for atmospheric and climate research, *Atmos. Chem. Phys.*, 8, 2151–2188, doi:10.5194/acp-8-2151-2008, 2008. 2997

Francis, G. L., Edwards, D. P., Lambert, A., Halvorson, C. M., Lee-Taylor, J. M., and Gille, J. C.: Forward modeling and radiative transfer for the NASA EOS-Aura High Resolution Dynamics Limb Sounder (HIRDLS) instrument, *J. Geophys. Res.*, 111, doi:10.1029/2005JD006270, 2006. 3003

Towards a 3-D tomographic retrieval for GLORIA

J. Ungermann et al.

Title Page

Abstract

Introduction

Conclusions

References

Tables

Figures

◀

▶

◀

▶

Back

Close

Full Screen / Esc

Printer-friendly Version

Interactive Discussion



- Friedl-Vallon, F., Riese, M., Maucher, G., Lengel, A., Hase, F., Preusse, P., and Spang, R.: Instrument concept and preliminary performance analysis of GLORIA, *Adv. Space Res.*, 37, 2287–2291, doi:10.1016/j.asr.2005.07.075, 2006. 2999
- Gille, J. C. and Russel III, J. M.: The Limb Infrared Monitor of the Stratosphere: Experiment Description, Performance, and Results, *J. Geophys. Res.*, 89, 5125–5140, doi:10.1029/JD089iD04p05125, 1984. 2997
- Gordley, L. L. and Russel, J. M.: Rapid inversion of limb radiance data using an emissivity growth approximation, *Appl. Optics*, 20, 807–813, doi:10.1364/AO.20.000807, 1981. 3002
- Gurevich, G.: Application of satellite tomography methods for the improvement of atmospheric sounding inversion algorithms, in: *Geoscience and Remote Sensing Symposium, 1995. IGARSS '95, Quantitative Remote Sensing for Science and Applications, International, vol. 2, 1195–1197*, doi:10.1109/IGARSS.1995.521182, 1995. 2998
- Hanke, M.: Conjugate gradient type methods for ill-posed problems, John Wiley & Sons, 1995. 3022
- Hanke, M.: Regularizing properties of a truncated Newton-CG algorithm for nonlinear inverse problems, *Numerical Functional Analysis and Optimization*, 18, 971–993, doi:10.1080/01630569708816804, 1997. 3021
- Hoffmann, L. and Alexander, M. J.: Retrieval of stratospheric temperatures from Atmospheric Infrared Sounder radiance measurements for gravity wave studies, *J. Geophys. Res.*, 114, doi:10.1029/2008JD011241, 2009. 3003
- Hoffmann, L., Kaufmann, M., Spang, R., Müller, R., Remedios, J. J., Moore, D. P., Volk, C. M., von Clarmann, T., and Riese, M.: Envisat MIPAS measurements of CFC-11: retrieval, validation, and climatology, *Atmos. Chem. Phys.*, 8, 3671–3688, doi:10.5194/acp-8-3671-2008, 2008. 3003
- Hoffmann, L., Weigel, K., Spang, R., Schroeder, S., Arndt, K., Lehmann, C., Kaufmann, M., Ern, M., Preusse, P., Stroh, F., and Riese, M.: CRISTA-NF measurements of water vapor during the SCOUT-O3 Tropical Aircraft Campaign, *Adv. Space Res.*, 43, 74–81, doi:10.1016/j.asr.2008.03.018, 2009. 2997, 3003
- Holton, J. R., Haynes, P. H., McIntyre, M. E., Douglass, A. R., Rood, R. B., and Pfister, L.: Stratosphere-Troposphere Exchange, *Rev. Geophys.*, 33, 403–439, 1995. 2996
- Höpfner, M., Blom, C., Clarmann, T., Fischer, F., Glatthor, N., Gulde, T., Hase, F., Keim, C., Kimmig, W., Lessenich, K., Piesch, C., Sartorius, C., and Stiller, G.: MIPAS-STR data analysis of APE-GAIA measurements, in: *IRS 2000: Current Problems in Atmospheric Radiation*;

Towards a 3-D tomographic retrieval for GLORIA

J. Ungermann et al.

Title Page

Abstract

Introduction

Conclusions

References

Tables

Figures

◀

▶

◀

▶

Back

Close

Full Screen / Esc

Printer-friendly Version

Interactive Discussion



Proc. of the Internat. Radiation Symp., edited by: Smith, W., 1136–1139, DEEPAK Publ., 2001. 2997

Kaminski, J. W., Neary, L., Struzewska, J., McConnell, J. C., Lupu, A., Jarosz, J., Toyota, K., Gong, S. L., Ct, J., Liu, X., Chance, K., and Richter, A.: GEM-AQ, an on-line global multiscale chemical weather modelling system: model description and evaluation of gas phase chemistry processes, *Atmos. Chem. Phys.*, 8, 3255–3281, doi:10.5194/acp-8-3255-2008, 2008. 3008

Keim, C., Liu, G. Y., Blom, C. E., Fischer, H., Gulde, T., Höpfner, M., Piesch, C., Ravegnani, F., Roiger, A., Schlager, H., and Sitnikov, N.: Vertical profile of peroxyacetyl nitrate (PAN) from MIPAS-STR measurements over Brazil in February 2005 and its contribution to tropical UT NO_y partitioning, *Atmos. Chem. Phys.*, 8, 4891–4902, doi:10.5194/acp-8-4891-2008, 2008. 2997

Kiefer, M., Arnone, E., Dudhia, A., Carlotti, M., Castelli, E., von Clarmann, T., Dinelli, B. M., Kleinert, A., Linden, A., Milz, M., Papandrea, E., and Stiller, G.: Impact of temperature field inhomogeneities on the retrieval of atmospheric species from MIPAS IR limb emission spectra, *Atmos. Meas. Tech. Discuss.*, 3, 1707–1742, doi:10.5194/amtd-3-1707-2010, 2010. 3018

Livesey, N. J. and Read, W. G.: Direct Retrieval of Line-of-Sight Atmospheric Structure from Limb Sounding Observations, *Geophys. Res. Lett.*, 27, 891–894, doi:10.1029/1999GL010964, 2000. 2998, 3000

Marshall, B. T., Gordley, L. L., and Chu, D. A.: BANDPAK: Algorithms for Modeling Broadband Transmission and Radiance, *J. Quant. Spectrosc. Ra.*, 52, 581–599, doi:10.1016/0022-4073(94)90026-4, 1994. 3002

Natterer, F.: The mathematics of computerized tomography, Society for Industrial and Applied Mathematics, Philadelphia, PA, USA, 2001. 3001

Nocedal, J. and Wright, S. J.: Numerical Optimization, Springer, 2006. 3022, 3023

Nolet, G.: Solving or resolving inadequate and noisy tomographic systems, *J. Comput. Phys.*, 61, 463–482, doi:10.1016/0021-9991(85)90075-0, <http://www.sciencedirect.com/science/article/B6WHY-4DD1W4N-17F/2/b8ae225f6a600fad6b93b60c4c6237b0>, 1985. 3006

Nolet, G.: A Breviary Of Seismic Tomography: Imaging The Interior Of The Earth And Sun, Cambridge University Press, 2008. 3001

Offermann, D., Grossmann, K.-U., Barthol, P., Knieling, P., Riese, M., and Trant, R.: Cryogenic Infrared Spectrometers and Telescopes for the Atmosphere (CRISTA) experiment and middle

Towards a 3-D tomographic retrieval for GLORIA

J. Ungermann et al.

Title Page

Abstract

Introduction

Conclusions

References

Tables

Figures

◀

▶

◀

▶

Back

Close

Full Screen / Esc

Printer-friendly Version

Interactive Discussion



atmosphere variability, *J. Geophys. Res.*, 104, 16311–16325, doi:10.1029/1998JD100047, 1999. 2997

Remedios, J. J., Leigh, R. J., Waterfall, A. M., Moore, D. P., Sembhi, H., Parkes, I., Greenhough, J., Chipperfield, M. P., and Hauglustaine, D.: MIPAS reference atmospheres and comparisons to V4.61/V4.62 MIPAS level 2 geophysical data sets, *Atmos. Chem. Phys. Discuss.*, 7, 9973–10017, doi:10.5194/acpd-7-9973-2007, 2007. 3009, 3010, 3031

Riese, M., Preusse, P., Spang, R., Ern, M., Jarisch, M., Grossmann, U., and Offermann, D.: Measurements of trace gases by the cryogenic infrared spectrometers and telescopes for the atmosphere CRISTA experiment, *Adv. Space Res.*, 19, 563–566, doi:10.1016/S0273-1177(97)00172-5, 1997. 2997

Riese, M., Manney, G. L., Oberheide, J., Tie, X., Spang, R., and Küll, V.: Stratospheric transport by planetary wave mixing as observed during CRISTA-2, *J. Geophys. Res.*, 107, doi:10.1029/2001JD000629, 2002. 2997

Riese, M., Friedl-Vallon, F., Spang, R., Preusse, P., Schiller, C., Hoffmann, L., Konopka, P., Oelhaf, H., von Clarmann, T., and Höpfner, M.: GLOBal limb Radiance Imager for the Atmosphere (GLORIA): Scientific objectives, *Adv. Space Res.*, 36, 989–995, doi:10.1016/j.asr.2005.04.115, 2005. 2997

Rodgers, C. D.: *Inverse Methods for Atmospheric Sounding: Theory and Practice*, vol. 2, Series on Atmospheric, Oceanic and Planetary Physics, World Scientific, 2000. 3001, 3005, 3006, 3019, 3022

Saad, Y.: *Iterative Methods for Sparse Linear Systems*, S.I.A.M., Philadelphia, 2nd edn., 2003. 3005

Solomon, S. C., Hays, P. B., and Abreu, V. J.: Tomographic inversion of satellite photometry, *Appl. Optics*, 23, 3409–3414, doi:10.1364/AO.23.003409, http://ao.osa.org/abstract.cfm?URI=ao-23-19-3409, 1984. 2998, 3000

Spang, R., Hoffmann, L., Kullmann, A., Olschewski, F., Preusse, P., Knieling, P., Schroeder, S., Stroh, F., Weigel, K., and Riese, M.: High resolution limb observations of clouds by the CRISTA-NF experiment during the SCOUT-O3 tropical aircraft campaign, *Adv. Space Res.*, 42, 1765–1775, doi:10.1016/j.asr.2007.09.036, 2008. 2997

Sparling, L. C. and Bacmeister, J. T.: Scale dependence of tracer microstructure: PDFs, intermittency and the dissipation scale, *Geophys. Res. Lett.*, 28, 2823–2826, doi:10.1029/2000GL012781, 2001. 2997

**Towards a 3-D
tomographic retrieval
for GLORIA**

J. Ungermann et al.

[Title Page](#)[Abstract](#)[Introduction](#)[Conclusions](#)[References](#)[Tables](#)[Figures](#)[⏪](#)[⏩](#)[◀](#)[▶](#)[Back](#)[Close](#)[Full Screen / Esc](#)[Printer-friendly Version](#)[Interactive Discussion](#)

Steck, T., Höpfner, M., von Clarmann, T., and Grabowski, U.: Tomographic retrieval of atmospheric parameters from infrared limb emission observations, *Appl. Optics*, 44, 3291–3301, doi:10.1364/AO.44.003291, 2005. 3000, 3021

Struzewska, J. and Kaminski, J. W.: Formation and transport of photooxidants over Europe during the July 2006 heat wave – observations and GEM-AQ model simulations, *Atmos. Chem. Phys.*, 8, 721–736, doi:10.5194/acp-8-721-2008, 2008. 3009

Tarantola, A.: *Inverse Problem Theory*, Society for Industrial and Applied Mathematics, Philadelphia, 2004. 3003

Ungermann, J., Hoffmann, L., Preusse, P., Kaufmann, M., and Riese, M.: Tomographic retrieval approach for mesoscale gravity wave observations by the PREMIER Infrared Limb-Sounder, *Atmos. Meas. Tech.*, 3, 339–354, doi:10.5194/amt-3-339-2010, 2010. 2997, 3003

von Clarmann, T., De Clercq, C., Ridolfi, M., Höpfner, M., and Lambert, J.-C.: The horizontal resolution of MIPAS, *Atmos. Meas. Tech.*, 2, 47–54, doi:10.5194/amt-2-47-2009, 2009. 3006, 3017

Weigel, K.: *Infrared limb-emission observations of the upper troposphere, lower stratosphere 15 with high spatial resolution*, Ph.D. thesis, University of Wuppertal, 2009.

Weigel, K., Riese, M., Hoffmann, L., Hofer, S., Kalicinsky, C., Knieling, P., Olschewski, F., Preusse, P., Stroh, F., Spang, R., and Volk, C. M.: CRISTA-NF measurements during the AMMA-SCOUT-O3 aircraft campaign, *Atmos. Meas. Tech. Discuss.*, 3, 923–964, doi:10.5194/amtd-3-923-2010, 2010. 3000, 3011

Weinreb, M. P. and Neuendorffer, A. C.: Method to Apply Homogeneous-path Transmittance Models to Inhomogenous Atmospheres, *J. Atmos. Sci.*, 30, 662–666, doi:10.1175/1520-0469(1973)030<0662:MTAHTP>2.0.CO;2, 1973. 3002

Towards a 3-D tomographic retrieval for GLORIA

J. Ungermann et al.

Table 1. This table shows the principle technical characteristics of the GLORIA instrument. The panning angle might be slightly reduced depending on the aircraft onto which GLORIA will be mounted. Both spectral resolution and NESR are given for apodized spectra.

GLORIA instrument specification (15 km observer altitude)		
Mode	Dynamics	Chemistry
lower limit of FOV	-3.27° (4 km)	-3.27° (4 km)
upper limit of FOV	$+0.8^\circ$	$+0.8^\circ$
vertical FOV	4.07°	4.07°
horizontal FOV	4.07°	4.07°
vertical sampling	140 m	560 m
horizontal sampling	2.2 km	17.9 km
panning	$45^\circ - 135^\circ$	90°
spectral coverage	$770-1100 \text{ cm}^{-1}$	$770-1400 \text{ cm}^{-1}$
spectral resolution	1.25 cm^{-1}	0.1 cm^{-1}
NESR	$3.5 \text{ nW}/(\text{cm}^2 \text{ sr cm}^{-1})$	$2 \text{ nW}/(\text{cm}^2 \text{ sr cm}^{-1})$
acquisition time	$\approx 3 \text{ s}$	$\approx 36 \text{ s}$

Title Page

Abstract

Introduction

Conclusions

References

Tables

Figures

◀

▶

◀

▶

Back

Close

Full Screen / Esc

Printer-friendly Version

Interactive Discussion



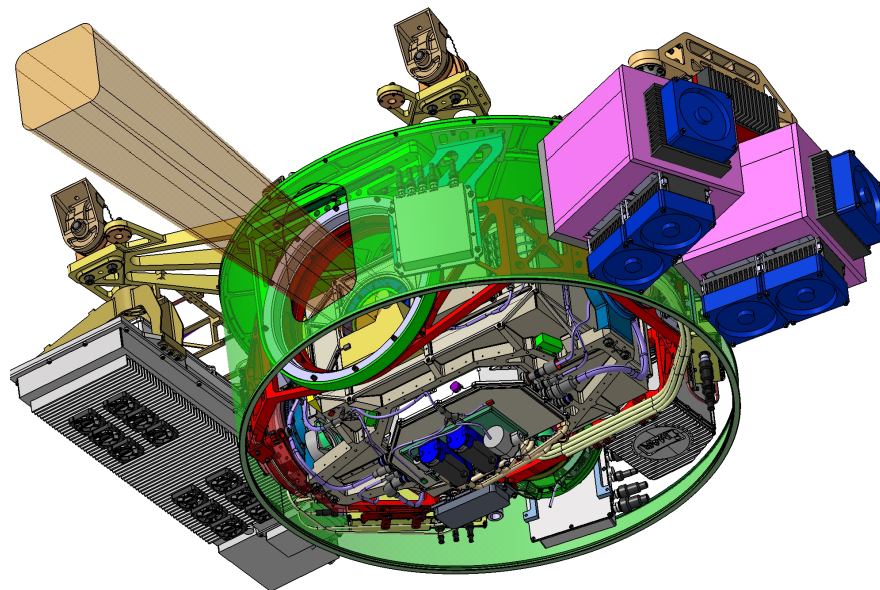


Fig. 1. Design of the GLORIA instrument. GLORIA will be housed in the belly pod of HALO and mounted on a base plate suspended from the aircraft. The picture shows a view where HALO and the base plate are omitted. The yellow beam indicates the viewing beam of the instrument. The GLORIA interferometer will be mounted in a cardanic frame for compensation of aircraft movements. The outermost, vertical axis is given by the green cylinder which also closes the belly pod to the air stream.

Towards a 3-D tomographic retrieval for GLORIA

J. Ungermann et al.

Title Page

Abstract

Introduction

Conclusions

References

Tables

Figures

◀

▶

◀

▶

Back

Close

Full Screen / Esc

Printer-friendly Version

Interactive Discussion



**Towards a 3-D
tomographic retrieval
for GLORIA**

J. Ungermann et al.

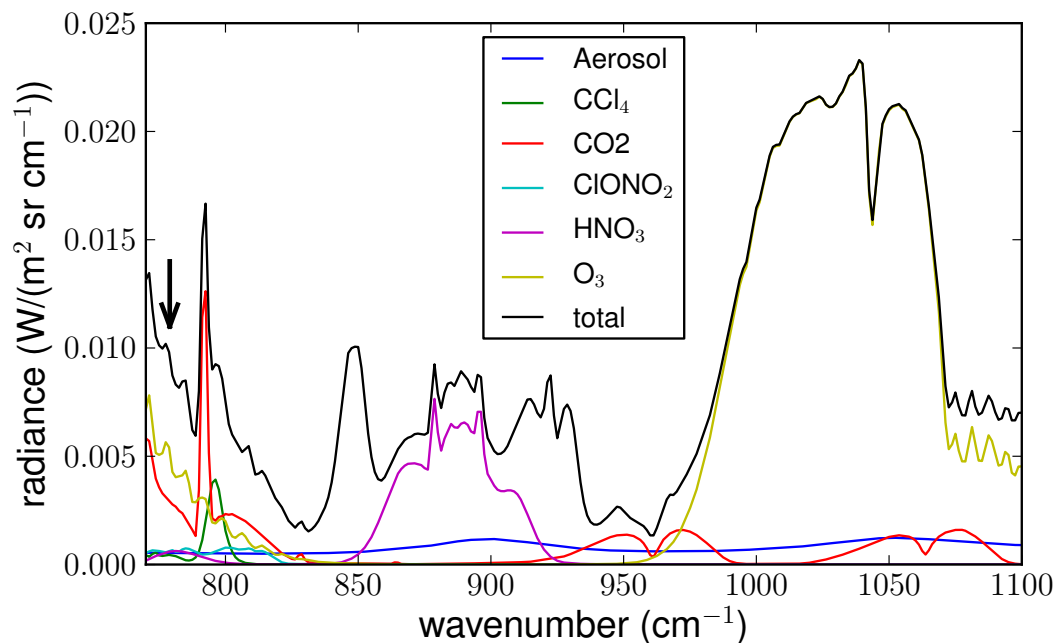


Fig. 2. Simulated radiance spectra for the GLORIA instrument. Calculations are based on mid-latitude atmospheric conditions (Remedios et al., 2007) and 12 km tangent altitude. The black curve indicates total radiance. The other curves indicate radiance for single emitter atmospheres (see legend). The black arrow indicates the O₃ line used for the retrievals.

[Title Page](#)[Abstract](#)[Introduction](#)[Conclusions](#)[References](#)[Tables](#)[Figures](#)[◀](#)[▶](#)[◀](#)[▶](#)[Back](#)[Close](#)[Full Screen / Esc](#)[Printer-friendly Version](#)[Interactive Discussion](#)

Towards a 3-D tomographic retrieval for GLORIA

J. Ungermann et al.

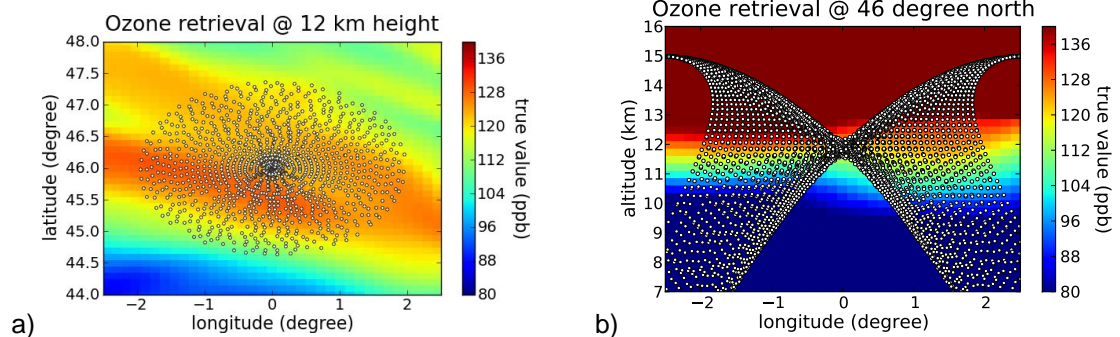


Fig. 3. Two cuts through the full 3-D true atmospheric state. **(a)** shows the ozone filament at 12 km height, while **(b)** shows a vertical cut along 46° N. Tangent points close to the cut planes are shown as small white circles.

Title Page

Abstract

Introduction

Conclusions

References

Tables

Figures

◀

▶

◀

▶

Back

Close

Full Screen / Esc

Printer-friendly Version

Interactive Discussion



Towards a 3-D tomographic retrieval for GLORIA

J. Ungermann et al.

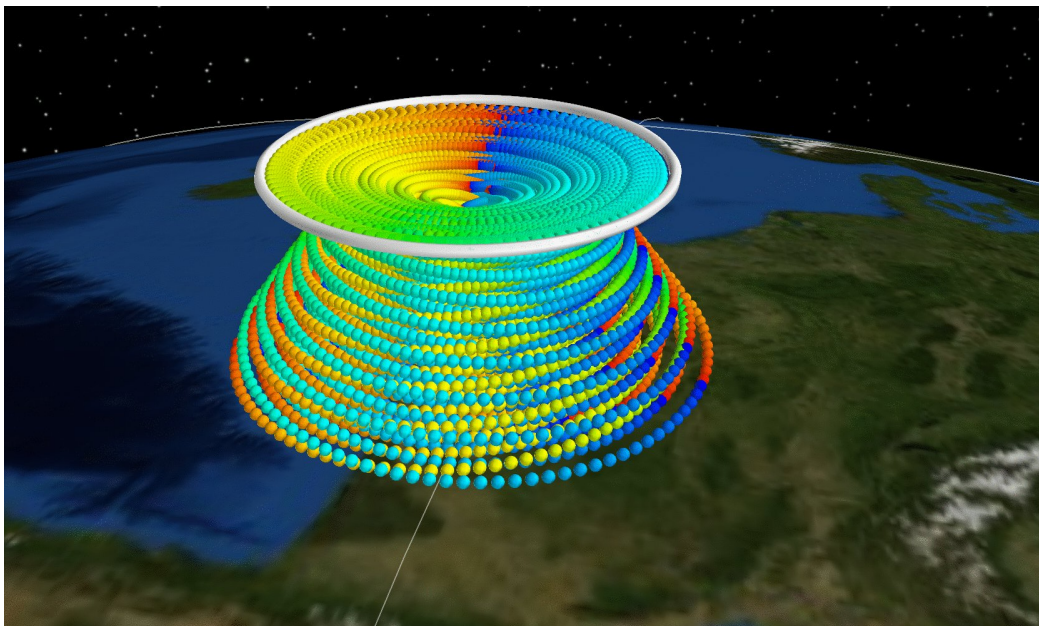


Fig. 4. This figure demonstrates a circular flight path and shows the location of the tangents of the measurements as color-coded spheres (red being the first measurements, blue the last ones) and the flight-track as a white tube.

[Title Page](#)[Abstract](#)[Introduction](#)[Conclusions](#)[References](#)[Tables](#)[Figures](#)[◀](#)[▶](#)[◀](#)[▶](#)[Back](#)[Close](#)[Full Screen / Esc](#)[Printer-friendly Version](#)[Interactive Discussion](#)

Towards a 3-D
tomographic retrieval
for GLORIA

J. Ungermann et al.

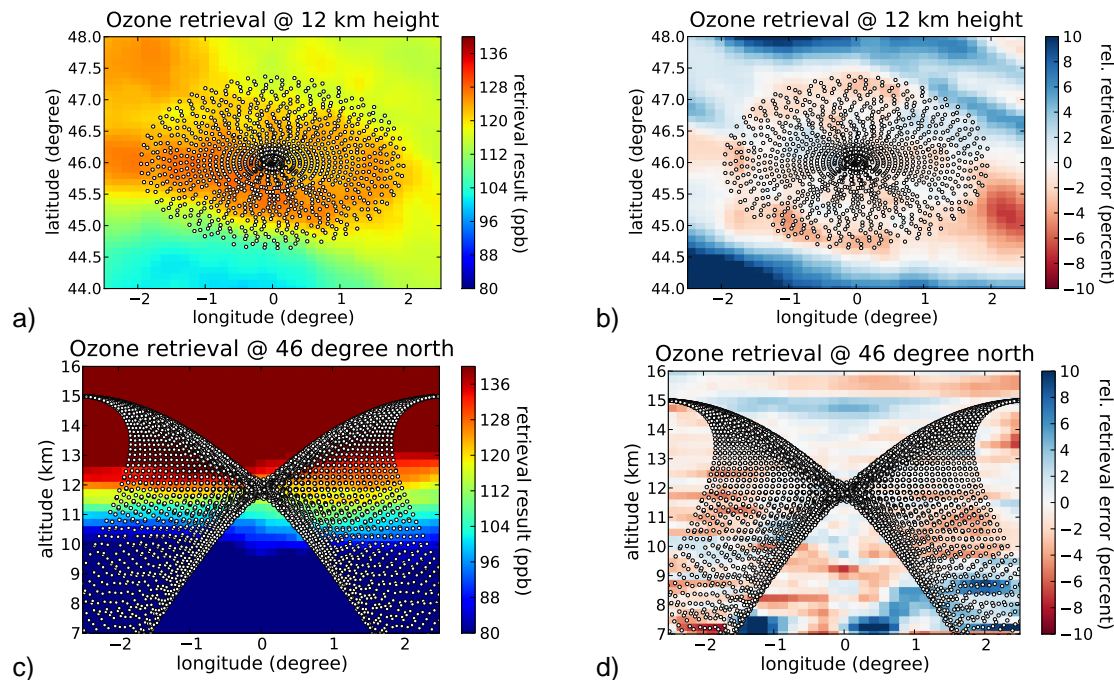


Fig. 5. The retrieval result of the baseline setup with added instrument noise. **(a)** shows the retrieved ozone values at 12 km height while **(b)** depicts the relative error in percent compared to the true values. **(c)** and **(d)** shows the same information for a vertical cut at 46° N.

Title Page

Abstract

Introduction

Conclusions

References

Tables

Figures

◀

▶

◀

▶

Back

Close

Full Screen / Esc

Printer-friendly Version

Interactive Discussion



Towards a 3-D tomographic retrieval for GLORIA

J. Ungermann et al.

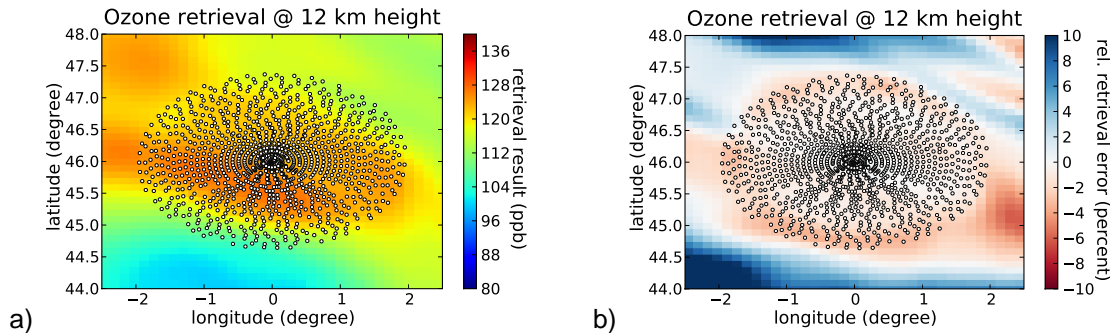


Fig. 6. The retrieval results without added instrument noise help identifying inherent errors produced by the tomographic procedure itself. **(a)** shows a very good agreement with the true atmospheric state depicted in Fig. 3a. In **(b)** it becomes apparent that large errors are introduced in the regions far from the center.

[Title Page](#)[Abstract](#)[Introduction](#)[Conclusions](#)[References](#)[Tables](#)[Figures](#)[◀](#)[▶](#)[◀](#)[▶](#)[Back](#)[Close](#)[Full Screen / Esc](#)[Printer-friendly Version](#)[Interactive Discussion](#)

Towards a 3-D tomographic retrieval for GLORIA

J. Ungermann et al.

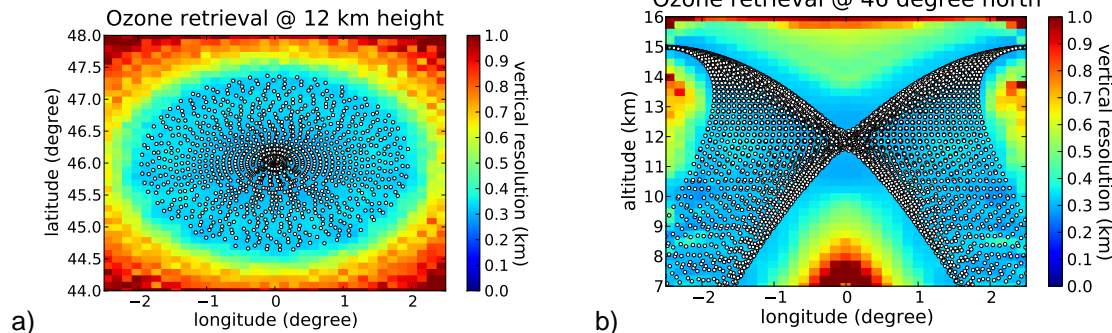


Fig. 7. The vertical resolution.

Title Page

Abstract

Introduction

Conclusions

References

Tables

Figures

⏪

⏩

◀

▶

Back

Close

Full Screen / Esc

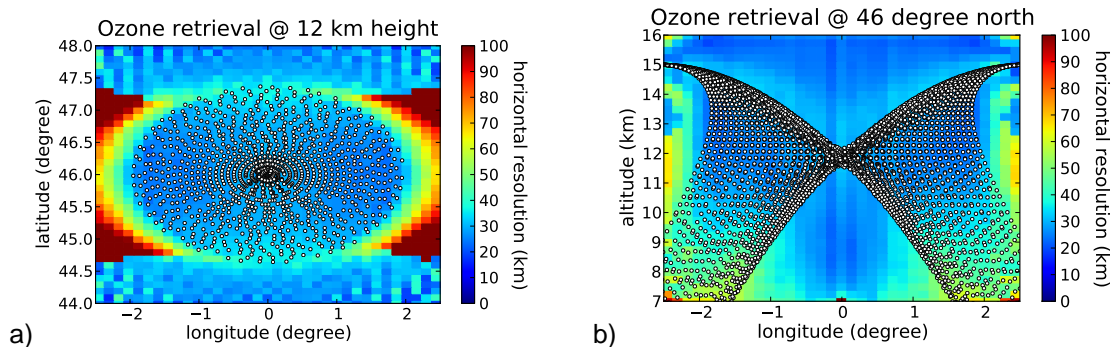
Printer-friendly Version

Interactive Discussion



**Towards a 3-D
tomographic retrieval
for GLORIA**

J. Ungermann et al.

**Fig. 8.** The horizontal resolution in longitudinal direction.[Title Page](#)[Abstract](#)[Introduction](#)[Conclusions](#)[References](#)[Tables](#)[Figures](#)[⏪](#)[⏩](#)[◀](#)[▶](#)[Back](#)[Close](#)[Full Screen / Esc](#)[Printer-friendly Version](#)[Interactive Discussion](#)

Towards a 3-D tomographic retrieval for GLORIA

J. Ungermann et al.

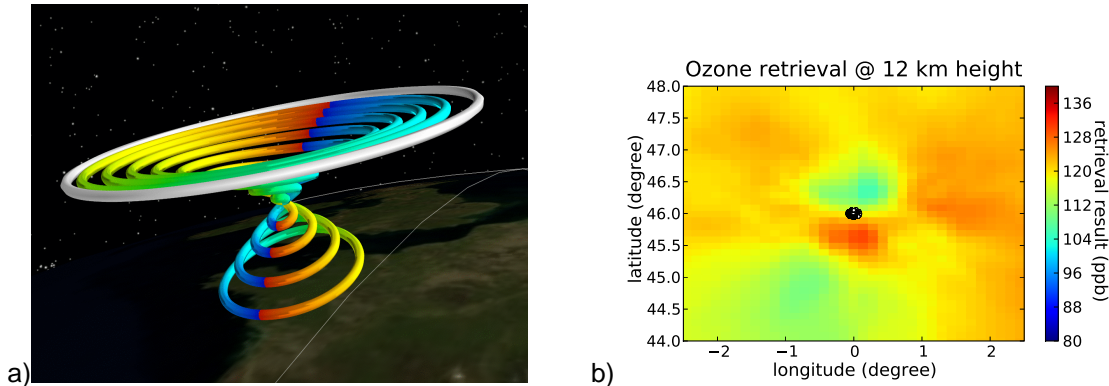


Fig. 9. This figure demonstrates a tomographic retrieval without panning. **(a)** shows the location of the tangents of the measurements as color-coded spheres (red being the first measurements, blue the last ones) and the flight-track as white tube. **(b)** shows the retrieval result at 12 km height.

[Title Page](#)[Abstract](#)[Introduction](#)[Conclusions](#)[References](#)[Tables](#)[Figures](#)[◀](#)[▶](#)[◀](#)[▶](#)[Back](#)[Close](#)[Full Screen / Esc](#)[Printer-friendly Version](#)[Interactive Discussion](#)

Towards a 3-D tomographic retrieval for GLORIA

J. Ungermann et al.

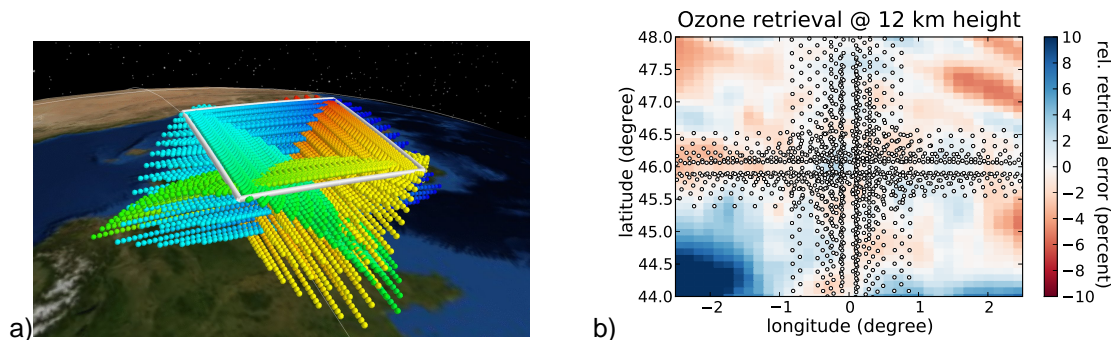
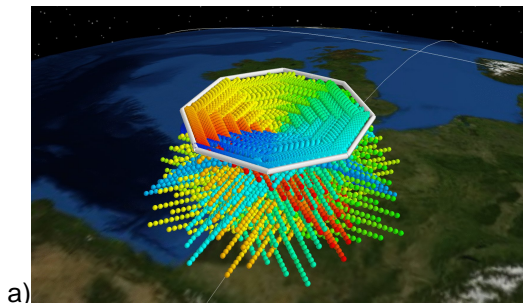
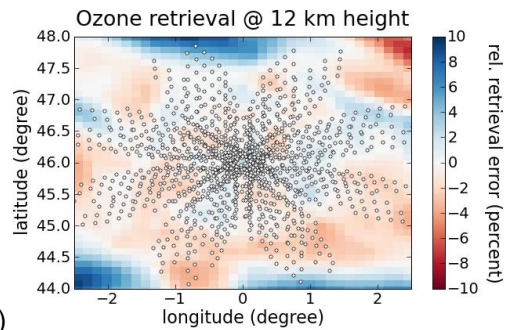


Fig. 11. This figure demonstrates a square flight path. **(a)** shows the location of the tangents of the measurements as color-coded spheres (red being the first measurements, blue the last ones) and the flight-track as white tube. **(b)** shows the relative error of the retrieval result at 12 km height.

[Title Page](#)[Abstract](#)[Introduction](#)[Conclusions](#)[References](#)[Tables](#)[Figures](#)[⏪](#)[⏩](#)[◀](#)[▶](#)[Back](#)[Close](#)[Full Screen / Esc](#)[Printer-friendly Version](#)[Interactive Discussion](#)



a)



b)

Fig. 12. This figure demonstrates an octagonal flight path. **(a)** shows the location of the tangents of the measurements as color-coded spheres (red being the first measurements, blue the last ones) and the flight-track as white tube. **(b)** shows the relative error of the retrieval result at 12 km height.

Towards a 3-D tomographic retrieval for GLORIA

J. Ungermann et al.

Title Page

Abstract

Introduction

Conclusions

References

Tables

Figures

⏪

⏩

◀

▶

Back

Close

Full Screen / Esc

Printer-friendly Version

Interactive Discussion



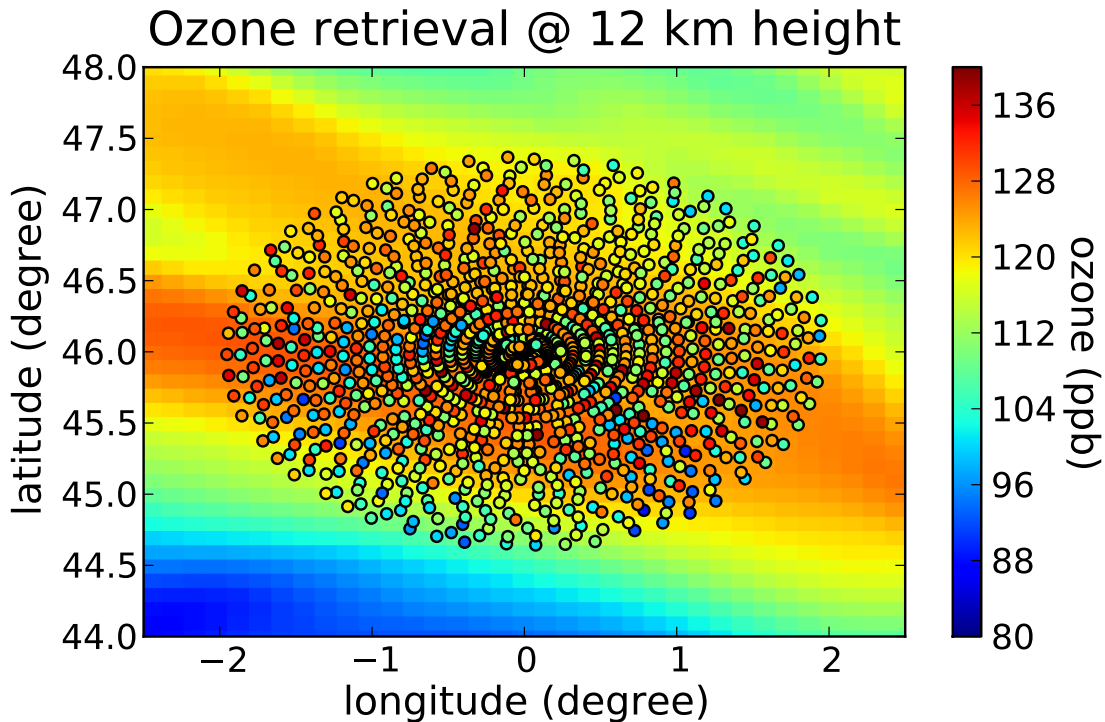


Fig. 13. The retrieval results for 12 km height of all 1-D retrievals shown as color-coded circles placed at the horizontal location of the closest tangent point. The data point highlighted by a broad black circle has been selected for closer examination.

Towards a 3-D tomographic retrieval for GLORIA

J. Ungermann et al.

Title Page

Abstract

Introduction

Conclusions

References

Tables

Figures

◀

▶

◀

▶

Back

Close

Full Screen / Esc

Printer-friendly Version

Interactive Discussion



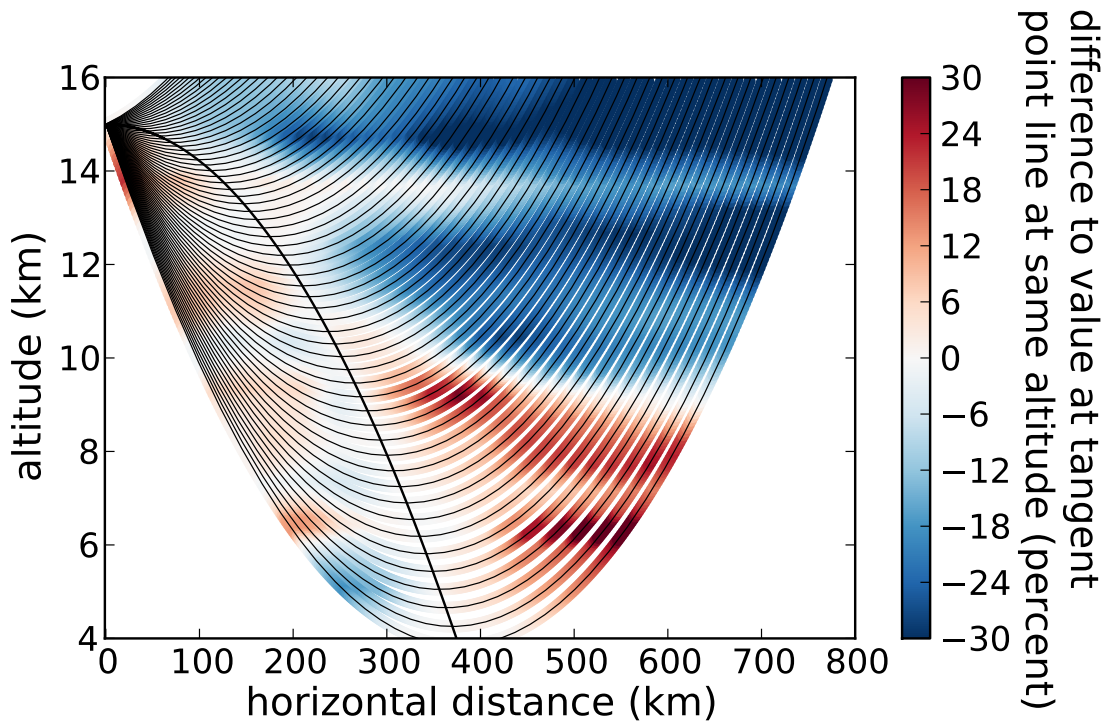


Fig. 14. Depicted are the rays of an exemplary 1-D retrieval. The ozone values are depicted relative to the value at the line of tangent points. The tangent points are shown as bold line starting from the instrument to the left and arcing down towards the ground. One can see clearly several structures in ozone, especially a strong increase in ozone to the right.

Towards a 3-D tomographic retrieval for GLORIA

J. Ungermann et al.

Title Page

Abstract Introduction

Conclusions References

Tables Figures

◀ ▶

◀ ▶

Back Close

Full Screen / Esc

Printer-friendly Version

Interactive Discussion



Towards a 3-D tomographic retrieval for GLORIA

J. Ungermann et al.

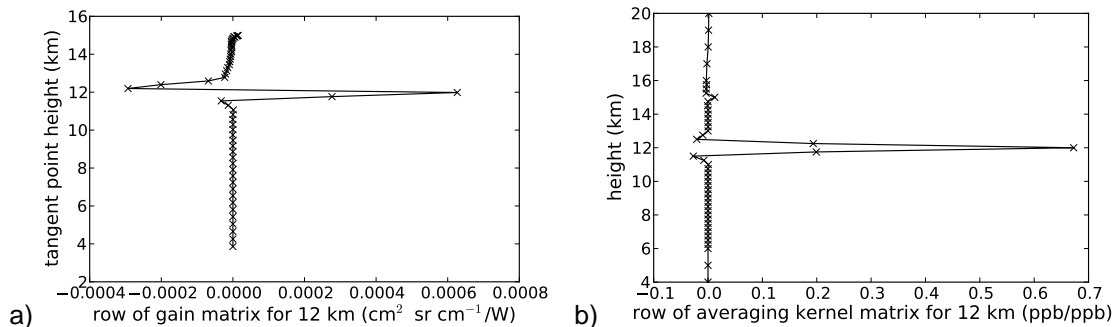


Fig. 15. (a) shows the row of the gain matrix corresponding to the retrieval result at 12 km. (b) shows the row of the 1-D averaging kernel matrix describing the relationship between the true atmosphere and the 1-D retrieval result at 12 km.

[Title Page](#)
[Abstract](#)
[Introduction](#)
[Conclusions](#)
[References](#)
[Tables](#)
[Figures](#)
[◀](#)
[▶](#)
[◀](#)
[▶](#)
[Back](#)
[Close](#)
[Full Screen / Esc](#)
[Printer-friendly Version](#)
[Interactive Discussion](#)


Towards a 3-D
tomographic retrieval
for GLORIA

J. Ungermann et al.

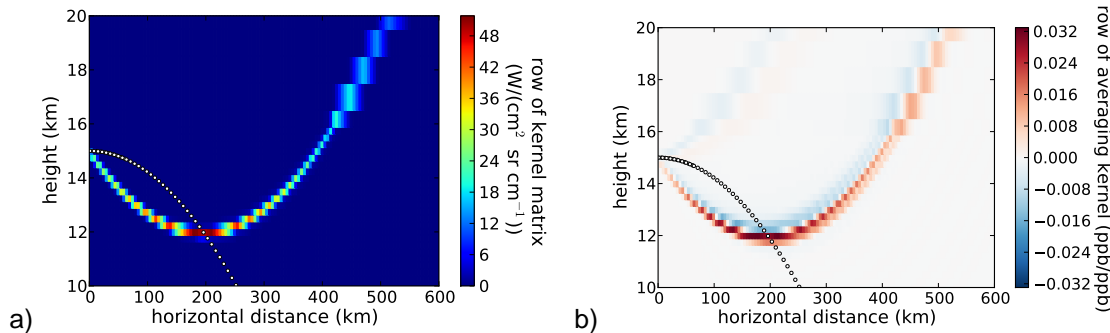


Fig. 16. This figure examines the effect of the assumption of horizontal homogeneity on a single 1-D retrieval more closely. **(a)** shows exemplary the weighting function with tangent height closest to 12 km. The 1-D weighting function corresponds to the horizontal sum of this matrix. **(b)** depicts the row associated with 12 km retrieval height of the full 2-D averaging kernel matrix that shows the contributions of higher layers to the retrieval result.

Title Page

Abstract

Introduction

Conclusions

References

Tables

Figures

◀

▶

◀

▶

Back

Close

Full Screen / Esc

Printer-friendly Version

Interactive Discussion



Towards a 3-D tomographic retrieval for GLORIA

J. Ungermann et al.

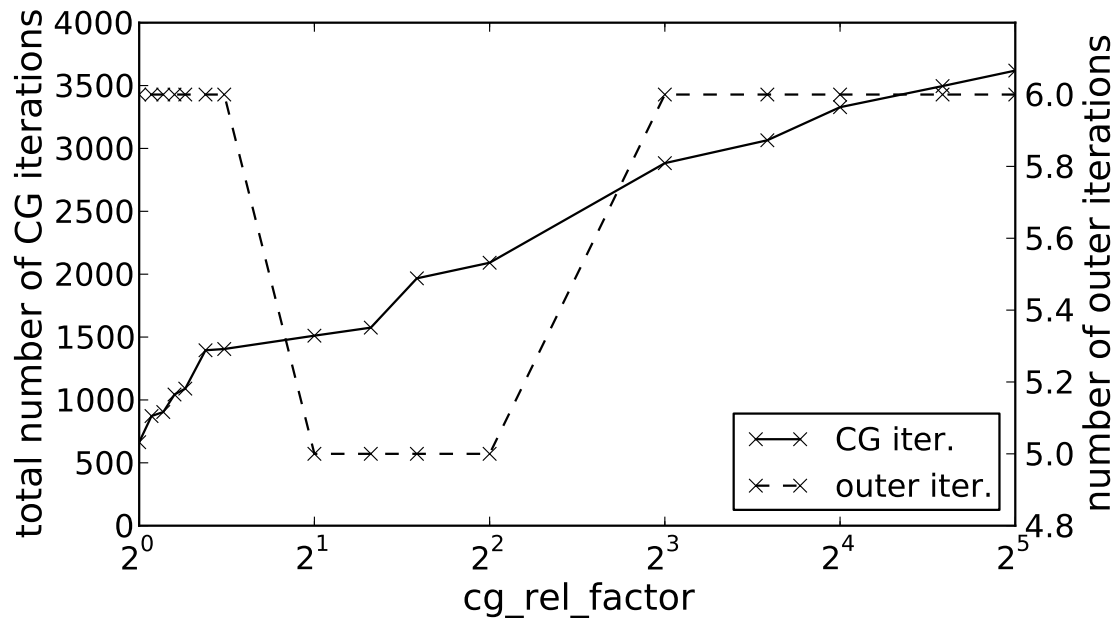


Fig. 17. The effect on parameterizing the conjugate gradient scheme on solving the baseline setup of Sect. 4.2. 'cg_rel_factor' describes a multiplicative adjustment factor for modifying the required reduction of the residuum after each outer iteration (increasing the required reduction of the residuum ion case the cost function was reduced or vice versa).

Title Page	
Abstract	Introduction
Conclusions	References
Tables	Figures
◀	▶
◀	▶
Back	Close
Full Screen / Esc	
Printer-friendly Version	
Interactive Discussion	

