

**Possible shift of
spectral response
function**

B. J. Sohn et al.

This discussion paper is/has been under review for the journal Atmospheric Measurement Techniques (AMT). Please refer to the corresponding final paper in AMT if available.

Possible shift of spectral response function of the MODIS 6.8 μm water vapor channel causing a cold bias up to 3 K

B. J. Sohn, B.-R. Kim, and S.-S. Lee

School of Earth and Environmental Sciences, Seoul National University, Seoul, 151–747, Korea

Received: 23 June 2010 – Accepted: 20 July 2010 – Published: 4 August 2010

Correspondence to: B. J. Sohn (sohn@snu.ac.kr)

Published by Copernicus Publications on behalf of the European Geosciences Union.

Title Page

Abstract

Introduction

Conclusions

References

Tables

Figures

⏪

⏩

◀

▶

Back

Close

Full Screen / Esc

Printer-friendly Version

Interactive Discussion



Abstract

The calibration of the Moderate-resolution Imaging Spectroradiometer (MODIS) 6.8 μm water vapor (WV) channel was assessed by comparing Terra/MODIS measurements with the WV channel brightness temperatures equivalent to Infrared Atmospheric Sounding Interferometer (IASI) measurements for June 2007 and December 2007. IASI spectral information was transferred to the Japanese Multifunctional Transport Satellite (MTSAT)-1R WV channel and then to the MODIS WV channel. Results indicate that the MODIS WV channel is biased low up to 3 K, likely caused by the shift of the spectral response function by about $+11 \text{ cm}^{-1}$. This finding is particularly important because the bias of -3 K can cause about $+30\%$ relative errors in the retrieval of upper tropospheric humidity (UTH). In other words, the current MODIS measurements may result in higher UTH values, showing relative errors up to $+30\%$.

1 Introduction

Accurate measurements of meteorological/geophysical parameters from satellites rely critically on radiometric calibration of the sensors. In principle, radiometric characteristics determined before launch can be used for calibration during the flight, with the use of an onboard calibration system. However, because of various undetected performance anomalies and sensitivity changes of the detector due to aging processes, vicarious calibrations are necessary for both monitoring and absolute calibration purposes.

With well-calibrated Moderate-resolution Imaging Spectroradiometer (MODIS) measurements, there has been great success in utilizing the MODIS products of various geophysical parameters to understand the global climate system. Among 36 MODIS channels, the 6.8 μm water vapor (WV) channel is of particular interest because of its relationship with the upper tropospheric humidity (UTH) (e.g., Soden and Bretherton 1993) that is often used for the water vapor feedback studies. As part of the MODIS

Possible shift of spectral response function

B. J. Sohn et al.

Title Page

Abstract

Introduction

Conclusions

References

Tables

Figures



Back

Close

Full Screen / Esc

Printer-friendly Version

Interactive Discussion



Possible shift of spectral response function

B. J. Sohn et al.

Title Page

Abstract

Introduction

Conclusions

References

Tables

Figures

◀

▶

◀

▶

Back

Close

Full Screen / Esc

Printer-friendly Version

Interactive Discussion



calibration efforts, it has been reported that onboard calibration provides $6.8\ \mu\text{m}$ WV channel measurements with the same accuracy as the prelaunch radiometric value of $0.27\ \text{K}$ (Xiong and Barnes, 2006). The intercalibration of Terra/MODIS channel measurements against contemporaneous measurements made by NASA ER-2 underflights have also indicated that the absolute accuracies of MODIS measurements are not worse than the claimed prelaunch radiometric uncertainty (Moeller et al., 2003).

Despite such expected accuracies from the presumably well-calibrated MODIS sensor, recent studies on comparing WV channel brightness temperatures reveal an inconsistency in the results. Sohn et al. (2008) evaluated measurements of the Japanese Multi-functional Transport Satellite-1R (MTSAT-1R) $6.8\ \mu\text{m}$ WV channel by collocating with the Terra/MODIS and transforming the brightness temperature (TB) of the MODIS $6.8\ \mu\text{m}$ WV channel into the MODIS-equivalent MTSAT-1R TB. Their results suggested that the MTSAT-1R WV channel has a warm bias up to $2\ \text{K}$.

In contrast, it has been reported that the MTSAT-1R WV channel has a few tenths of a degree of bias when compared to the equivalent channel TB from the Infrared Atmospheric Sounding Interferometer (IASI) hyperspectral images (http://mscweb.kishou.go.jp/monitoring/gsics/ir/gsir_mt1r.htm). Considering that the IASI sensor is well calibrated to an uncertainty level below $0.2\ \text{K}$ (Blumstein et al., 2007; Larar et al., 2010), one possible explanation of the discrepancy is that the MODIS WV channel may be biased cold. Such cold bias of Aqua/MODIS WV channel has been reported by Tobin et al. (2006) from the comparison with AIRS-driven MODIS-equivalent temperatures. Although a direct comparison between IASI and MODIS is desirable, it may be available only over the polar regions, based on the so-called Simultaneous Nadir Overpasses (SNO) method (Cao et al., 2005). The equatorial crossing time of the IASI is 09:30, whereas it is 10:30 for Terra/MODIS and 13:30 for Aqua/MODIS. However, it is thought be difficult to apply the SNO technique for the water vapor channel under extremely dry conditions such as in polar regions, because the WV channel is mostly affected by surface signals, similar to window channels. In other words, it may be difficult to diagnose the effect caused by any shift of the WV spectral response function using the

SNO technique.

In this paper, by taking the IASI observations as a reference, we have investigated the calibration status of the MODIS 6.8 μm WV channel. Because direct comparison between IASI and MODIS is difficult, we used the MTSAT-1R WV channel as a surrogate IASI to intercalibrate the MODIS WV channel; that is, accurate spectral information from IASI is transferred to the MODIS water vapor channel through the MTSAT-1R. Here we provide strong evidence that the Terra/MODIS 6.8 μm WV channel is biased cold up to 3 K.

2 Data used

In this investigation, WV channel images from the MTSAT-1R and Terra/MODIS and hyperspectral images from IASI over the 6.8 μm water vapor absorption band for June and December 2007 (a total of two months) are taken over the MTSAT-1R observation area of 30° N–30° S and 110° E–180° E. Their respective spectral response functions for the 6.8 μm strong water vapor absorption band are given in Fig. 1. Hereafter, the 6.8 μm absorption band is referred to as the WV channel.

IASI is a passive infrared sensing instrument based on the Michelson Interferometer onboard the Meteorological Operational Satellite/EUMETSAT (MetOp/EUMETSAT). Its spectral coverage is from 3.63 to 15.5 μm (or 645 to 2760 cm^{-1}) with 8461 spectral samples at a 0.5 cm^{-1} spectral resolution (EUMETSAT). The IASI Level 1C (IASI L1C) data with a 12-km spatial resolution at the sub-satellite point were downloaded from the NOAA/CLASS Website (<http://www.nsof.class.noaa.gov/saa/products/welcome>). After the launch in October 2006, IASI has shown good in-flight performance, especially regarding its radiometric and spectral accuracy, for which the calibration accuracy is claimed to be well below 0.15 K (Blumstein et al., 2007) and within about 0.1 K (Larar et al., 2010).

The geostationary MTSAT-1R satellite located at 140° E carries an IR imager to measure IR radiances at four spectral bands (centered at 10.8, 12.0, 6.8, and 3.8 μm)

Possible shift of spectral response function

B. J. Sohn et al.

Title Page

Abstract

Introduction

Conclusions

References

Tables

Figures

◀

▶

◀

▶

Back

Close

Full Screen / Esc

Printer-friendly Version

Interactive Discussion



with a 4.0 km pixel resolution at the sub-satellite point. In this study, we used MT-SAT/High Rate Information Transmission (MTSAT/HRIT) data from the Japan Meteorological Agency (JMA). The HRIT count values for the WV channel were converted into TB using the calibration table provided by the JMA Web site (http://mscweb.kishou.go.jp/operation/calibration/mt1r/HRIT/mt1r_hrhit.htm).

The MODIS sensors onboard both the Terra and Aqua platforms each have 36 channels. The Terra/MODIS data set used in this study consists of channel radiances (MOD021KM), geolocation (MOD03: latitude, longitude, and satellite zenith angle), and cloud mask (MOD35_L2). The nominal spatial resolution of the MODIS data used is 1 km at the nadir.

3 Methodology

This examination includes the following steps: (1) development of a theoretical relationship of TB between the MODIS and MTSAT-1R WV channels, (2) bias correction of the MTSAT-1R WV channel TB, (3) estimation of IASI-equivalent MODIS WV channel TB from the collocated MTSAT-1R WV channel TB, and (4) comparison of IASI-equivalent MODIS TBs with measured TBs. A detailed description of the method is as follows.

Because the IASI provides spectral signatures with a 0.5 cm^{-1} resolution, the expected relationship of TB between MTSAT-1R and MODIS can be theoretically calculated by applying their respective spectral response functions (SRFs). Once an IASI-based pseudo-channel corresponding to any target channel is selected (here, the WV channel of the MTSAT-1R or the MODIS), the radiance measured by the pseudo-channel (N_{WV}) can be inferred as follows:

$$N_{WV} \equiv \int_{\nu_1}^{\nu_2} \Phi(\nu) N_\nu d\nu / \int_{\nu_1}^{\nu_2} \Phi(\nu) d\nu \quad (1)$$

where $\Phi(\nu)$ is the SRF of the target channel at the wave number ν , and N_ν is the

Possible shift of spectral response function

B. J. Sohn et al.

Title Page

Abstract

Introduction

Conclusions

References

Tables

Figures

◀

▶

◀

▶

Back

Close

Full Screen / Esc

Printer-friendly Version

Interactive Discussion



IASI-measured radiance at the wave number ν . The calculated synthetic radiance is then converted into TB for the WV channels of MTSAT-1R and MODIS to obtain the TB relationship between the two WV channels. The regression equation may be expressed as:

$$5 \quad TB_{\text{MODIS}} = a + bTB_{\text{MTSAT}} \quad (2)$$

In Eq. (2), TB_{MODIS} and TB_{MTSAT} are brightness temperatures of the MODIS and MTSAT-1R WV channels inferred from IASI spectral measurements, referred to as “IASI-equivalent” MODIS and MTSAT-1R WV channel TBs, respectively. The coefficients of Eq. (2) are obtained by regressing two sets of TBs only from clear-sky scenes.

10 Because TB_{MTSAT} in Eq. (2) is theoretically calculated with IASI spectral signatures, bias correction should be made before applying Eq. (2) to infer TB_{MODIS} from measured MTSAT-1R WV TB. The bias is determined by comparing measured MTSAT-1R TB with TB_{MTSAT} from collocated IASI pixels. Finally, the bias-corrected MTSAT-1R WV TB is inserted into Eq. (2) to infer “IASI-equivalent” MODIS WV channel TB (i.e., TB_{MODIS}), which is then compared with collocated and measured MODIS WV channel TBs.

15 Collocated match-up data are constructed using MTSAT-1R vs. IASI images as well as MTSAT-1R vs. MODIS images. Since the instruments being considered are onboard different satellite platforms, their time–space resolutions and viewing geometries are quite different. For example, the spatial resolution at nadir is 12 km for IASI and 4 km for MTSAT-1R. In order to remove the effects of different spatial and temporal resolutions and viewing geometry differences, we projected measurements from different sensors onto a common reference. Images were selected when observation time differences were within ± 5 min. Data were further processed for the construction of match-up data when an absolute difference in viewing angle between two observations was less than 20 5° . Then, brightness temperatures from each satellite were averaged and reformatted into a $0.2^\circ \times 0.2^\circ$ grid to mitigate the effects of different spatial resolutions.

25 Brightness temperatures were averaged only when the 0.2° grid was entirely filled with clear pixels, at least in the middle to upper tropospheric layer, to remove the effect

Possible shift of spectral response function

B. J. Sohn et al.

[Title Page](#)[Abstract](#)[Introduction](#)[Conclusions](#)[References](#)[Tables](#)[Figures](#)[◀](#)[▶](#)[◀](#)[▶](#)[Back](#)[Close](#)[Full Screen / Esc](#)[Printer-friendly Version](#)[Interactive Discussion](#)

Possible shift of spectral response function

B. J. Sohn et al.

Title Page

Abstract

Introduction

Conclusions

References

Tables

Figures

◀

▶

◀

▶

Back

Close

Full Screen / Esc

Printer-friendly Version

Interactive Discussion



of cloud contamination in the 6.8 μm channel TB, whose weighting function is generally located in the upper troposphere. For the IASI and MTSAT-1R collocation, the pixel was considered to be cloud-free for the water vapor channel if the MTSAT-1R window channel TB (around the 11 μm band) is larger than 275 K (Sohn and Schmetz, 2004) and the TB difference between the window and water vapor channels is larger than 25 K (Soden, 1998). These thresholds eliminate pixels contaminated by high or middle clouds. The grid remains if the standard deviation of TB11 within the grid is less than 0.8 K for the spatial homogeneity check.

For the MODIS and MTSAT-1R pair, the MODIS level 2 cloud mask products (MOD35_L2) were used to ensure the removal of cloud-contaminated scenes. The homogeneity criterion was also applied to remove targets contaminated by clouds or coastal lines. The 0.8 K standard deviation of TB11 within a grid was also used as a criterion for the spatial homogeneity check.

4 Results

For the given IASI spectrum, the MODIS and MTSAT-1R WV TB were estimated for June and December, 2007, by applying their respective SRFs. Figure 2 shows scatter plots of MTSAT-1R and MODIS WV channel TBs inferred from IASI measurements. Regression lines are represented by dashed lines, and solid diagonal lines represent one-to-one matches. These show the MODIS and MTSAT-1R WV channel measurements to be well behaved, with a correlation coefficient of 0.99 for both the summer month and the winter month, indicating that MODIS TB can be predicted by MTSAT-1R measurement or vice-versa, if calibrations are accurate. The regression equations obtained for June and December, 2007 were as follows:

$$\text{For June 2007:} \quad \text{TB}_{\text{MODIS}} = -5.83 + 1.03\text{TB}_{\text{MTSAT}} \quad (3)$$

$$\text{For December 2007:} \quad \text{TB}_{\text{MODIS}} = -4.78 + 1.02\text{TB}_{\text{MTSAT}} \quad (4)$$

Possible shift of spectral response function

B. J. Sohn et al.

Title Page

Abstract

Introduction

Conclusions

References

Tables

Figures

⏪

⏩

◀

▶

Back

Close

Full Screen / Esc

Printer-friendly Version

Interactive Discussion



In Eqs. (3) and (4), the IASI-equivalent MTSAT-1R TB (i.e., TB_{MTSAT}) is used as a predictor to estimate the IASI-equivalent MODIS TB (i.e., TB_{MODIS}). However, the measured MODIS TB is compared with the IASI-equivalent MODIS TB estimated from the collocated MTSAT-1R TB; thus the bias between TB_{MTSAT} and the measured MTSAT-1R TB should be evaluated and taken into account before predicting TB_{MODIS} .

In order to assess the bias, measured MTSAT-1R TBs were compared with IASI-equivalent MTSAT-1R TBs using the collocated IASI-MTSAT data – Fig. 3a,b. The scatter plots indicate an almost one-to-one correspondence between the two sets of TB data for both the winter month and the summer month. The mean biases of 0.12 K and 0.09 K appear insignificant; nevertheless, those values were taken into account for correcting the bias of the measured MTSAT-1R TBs.

At the same time, the IASI-based relationship between TB_{MODIS} and TB_{MTSAT} expressed in Eqs. (3) and (4) can be applied to predict MTSAT-1R TBs from MODIS TB measurements. The predicted MTSAT-1R TBs (or MODIS-equivalent MTSAT-1R TBs) can be compared with collocated measured MTSAT-1R TBs, which can be used as a way to assess the calibration status of MTSAT-1R WV channel measurements based on the MODIS measurements as a reference. It is similar to the approach used by Sohn et al. (2008). Comparison results given in Fig. 3c,d suggest that MTSAT-1R WV channel overestimates TBs by 2.2 to 2.5 K when MODIS measurements are used as a reference. This overestimate is significantly different from the near agreement shown between IASI-equivalent TBs and measured TBs in Fig. 3a,b, leading to a conjecture that MODIS WV channel calibration may be problematic if IASI measurements are assumed to be true. Taking results shown in Fig. 3 as a working hypothesis, we further proceed to assess the calibration status of MODIS WV measurements and examine possible causes of the calibration bias if any.

Using Eqs. (3) and (4), the IASI-equivalent MODIS TBs were estimated from collocated MTSAT-1R TBs with a bias adjustment. Figure 4 shows the scatter plots of observed versus IASI-equivalent MODIS WV channel TBs for June and December, 2007. The dashed lines represent regression lines, while the solid lines represent per-

Possible shift of spectral response function

B. J. Sohn et al.

Title Page

Abstract

Introduction

Conclusions

References

Tables

Figures

⏪

⏩

◀

▶

Back

Close

Full Screen / Esc

Printer-friendly Version

Interactive Discussion



fect matches. In Fig. 4, it can be seen that the measured MODIS WV channel TBs are strongly correlated with IASI-equivalent TBs (correlation coefficient 0.99); however, biases of -3.06 K for June 2007, and -2.02 K for December 2007, suggest that MODIS water vapor TBs are biased low, up to about 2–3 K. The seasonal dependence of the bias appears to be related to the degree of wetness of the upper troposphere. Considering that the water vapor absorption signal is stronger (weaker) for moister (drier) condition, we may expect a smaller difference in TB for the drier atmosphere if all other calibration factors remain unchanged, as also expressed in Eqs. (3) and (4). It is also of interest to note that the bias seems to be larger for the colder scenes. Again, considering that higher UTH is often depicted by a colder WV channel TB, the temperature dependence of bias is consistent with the seasonal dependence.

We assume that the discrepancies between measured and inferred MODIS WV channel TBs are due to the error in the MODIS SRF position. The cold bias of TB and its dependence on season and scene temperature were found to be almost cancelled by introducing a spectral shift for the MODIS $6.8\ \mu\text{m}$ WV channel (not shown). The analysis was repeated with convolutions of IASI spectra with an SRF of the MODIS WV channel shifted by $+11\ \text{cm}^{-1}$. This result is consistent with the suggested cold bias around 1 K in the MODIS water vapor channel, based on comparison with the brightness temperature inferred from Atmospheric Infrared Sounder (AIRS), which has previously been attributed to an SRF shift of $+5.0\ \text{cm}^{-1}$ (Tobin et al., 2006). Considering that the AIRS has gaps over the $6.8\ \mu\text{m}$ WV absorption band, the Tobin et al. (2006) WV channel results should not be definite, our result of an $+11\ \text{cm}^{-1}$ SRF shift causing a cold bias up to 3 K should be counted as significant for MODIS data processing.

5 Conclusions

We assessed the calibration performance of the Terra/MODIS $6.8\ \mu\text{m}$ WV absorption channel by using collocated MTSAT-1R as a surrogate of IASI. In so doing, IASI spectral measurements were convolved into the brightness temperatures of $6.8\ \mu\text{m}$ WV ab-

Possible shift of spectral response function

B. J. Sohn et al.

Title Page

Abstract

Introduction

Conclusions

References

Tables

Figures

◀

▶

◀

▶

Back

Close

Full Screen / Esc

Printer-friendly Version

Interactive Discussion



EUMETSAT: IASI Level 1 product guide, EUM/OPS-EPS/MAN/04/0032, V2E. EUMETSAT, Darmstadt, Germany, (<http://oiswww.eumetsat.org/WEBOPS/eps-pg/IASI-L1/IASIL1-PG-0TOC.htm>), 2008.

Larar, A. M., Smith, W. L., Zhou, D. K., Liu, X., Revercomb, H., Taylor, J. P., Newman, S. M., and Schlüssel, P.: IASI spectral radiance validation inter-comparisons: case study assessment from the JAIVEx field campaign, *Atmos. Chem. Phys.*, 10, 411–430, doi:10.5194/acp-10-411-2010, 2010.

Moeller, C. C., Revercomb, H. E., Ackerman, S. A., Menzel, W. P., and Knuteson, R. O.: Evaluation of MODIS thermal IR band L1B radiances during SAFARI 2000, *J. Geophys. Res.*, 108(D13), 8494, doi:10.1029/2002JD002323, 2003.

Soden, B. J. and Bretherton, F. P.: Upper-tropospheric relative humidity from the GOES 6.7 μm channel: Method and climatology for July 1987, *J. Geophys. Res.*, 98, 16669–16688, 1993.

Soden, B. J.: Tracking upper tropospheric water vapor radiances: A satellite perspective, *J. Geophys. Res.*, 103, 17069–17081, 1998.

Sohn, B. J., Schmetz, J., Tjemkes, S., Koenig, M., Lutz, H., Arriaga, A., and Chung, E. S.: Intercalibration of the Meteosat 7 water vapor channel with SSM/T-2, *J. Geophys. Res.*, 105, 16673–16680, 2000.

Sohn, B. J. and Schmetz, J.: Water vapor-induced OLR variations associated with high cloud changes over the tropics: A study from Meteosat-5 observations, *J. Climate*, 17, 1987–1996, 2004.

Sohn, B. J., Park, H. S., Han, H. J., and Ahn, M. H.: Evaluating the calibration of MTSAT-1R infrared channels using collocated Terra MODIS measurements, *Int. J. Remote Sens.*, 29, 3033–3042, 2008.

Tobin, D. C., Revercomb, H. E., Moeller, C. C., and Pagano, T. S.: Use of atmospheric infrared sounder high-spectral resolution spectra to assess the calibration of moderate resolution imaging spectroradiometer on EOS aqua, *J. Geophys. Res.*, 111, D09S05, doi:10.1029/2005JD006095, 2006.

Xiong, X. and Barnes, W.: An overview of MODIS radiometric calibration and characterization, *Adv. Atmos. Sci.*, 23, 69–79, 2006.

Possible shift of spectral response function

B. J. Sohn et al.

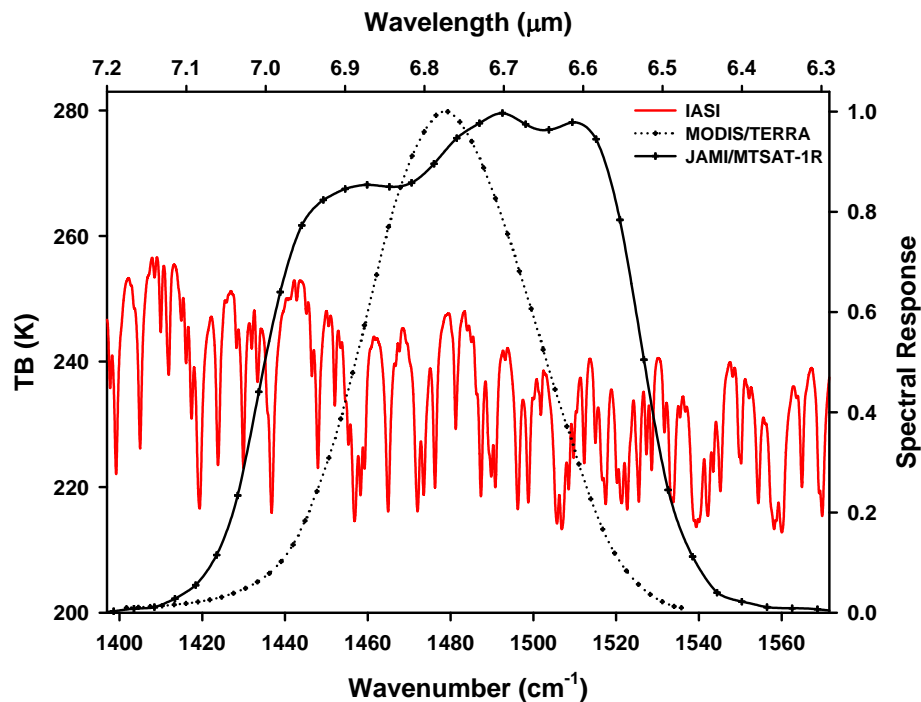


Fig. 1. The normalized spectral response functions of the MODIS and MTSAT-1R 6.8 μm water vapor channels. The IASI spectrum collected at 00:30 UTC 16 June 2007 at the location (3.22°N , 140.06°E) is overlaid.

[Title Page](#)[Abstract](#)[Introduction](#)[Conclusions](#)[References](#)[Tables](#)[Figures](#)[◀](#)[▶](#)[◀](#)[▶](#)[Back](#)[Close](#)[Full Screen / Esc](#)[Printer-friendly Version](#)[Interactive Discussion](#)

**Possible shift of
spectral response
function**

B. J. Sohn et al.

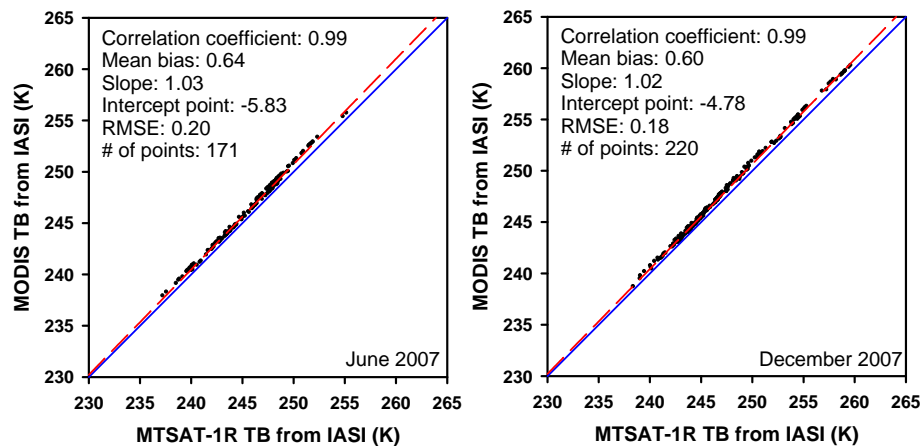


Fig. 2. Brightness temperatures inferred from IASI measurements for the MODIS and MTSAT-1R 6.8 μm water vapor channels in June 2007 (left) and December 2007 (right).

[Title Page](#)[Abstract](#)[Introduction](#)[Conclusions](#)[References](#)[Tables](#)[Figures](#)[⏪](#)[⏩](#)[◀](#)[▶](#)[Back](#)[Close](#)[Full Screen / Esc](#)[Printer-friendly Version](#)[Interactive Discussion](#)

Possible shift of spectral response function

B. J. Sohn et al.

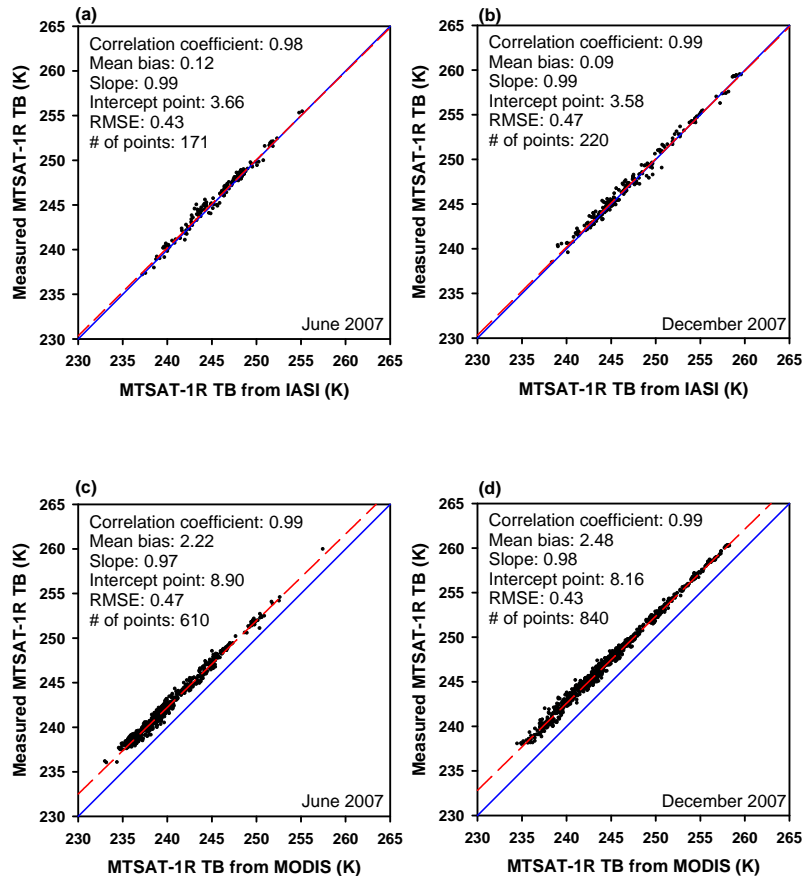


Fig. 3. Scatter plots of IASI equivalent MTSAT-1R and measured MTSAT-1R water vapor channel brightness temperatures for June 2007 **(a)** and December 2007 **(b)**, and of MODIS equivalent MTSAT-1R and measured MTSAT-1R water vapor channel brightness temperatures for June 2007 **(c)** and December 2007 **(d)**.

**Possible shift of
spectral response
function**

B. J. Sohn et al.

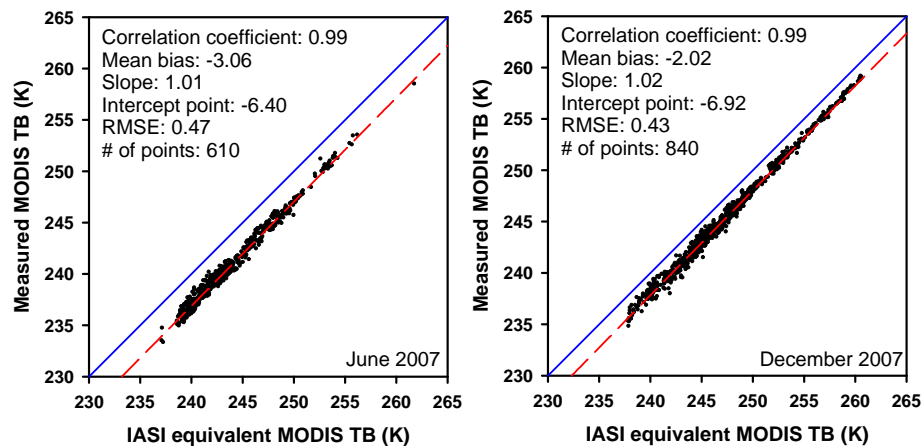


Fig. 4. Scatter plots of measured MODIS and IASI equivalent MODIS brightness temperatures for June 2007 (left) and December 2007 (right).

[Title Page](#)[Abstract](#)[Introduction](#)[Conclusions](#)[References](#)[Tables](#)[Figures](#)[⏪](#)[⏩](#)[◀](#)[▶](#)[Back](#)[Close](#)[Full Screen / Esc](#)[Printer-friendly Version](#)[Interactive Discussion](#)