

**SCIAMACHY PMDs
identification of
clouds and ice/snow
II**

J. M. Krijger et al.

Improved identification of clouds and ice/snow covered surfaces in SCIAMACHY observations

J. M. Krijger¹, P. Tol¹, L. G. Istomina², C. Schlundt², H. Schrijver¹, and I. Aben¹

¹SRON, Netherlands Institute for Space Research, Sorbonnelaan 2,
3584 CA Utrecht, The Netherlands

²Institute of Environmental Physics, University of Bremen, Bremen, Germany

Received: 1 February 2011 – Accepted: 7 February 2011 – Published: 22 February 2011

Correspondence to: J. M. Krijger (krijger@sron.nl)

Published by Copernicus Publications on behalf of the European Geosciences Union.

Title Page

Abstract

Introduction

Conclusions

References

Tables

Figures

⏪

⏩

◀

▶

Back

Close

Full Screen / Esc

Printer-friendly Version

Interactive Discussion

Abstract

An improved version is presented of the SCIAMACHY PMD Identification of Clouds and Ice/snow method (SPICI). SPICI uses the SCIAMACHY measurements in the wavelength range between 450 nm and 1.6 μm to make a distinction between clouds and ice/snow covered surfaces, specifically developed to identify cloud-free SCIAMACHY observations. For this purpose the SCIAMACHY Polarisation Measurement Devices (PMDs) are used because they provide higher spatial resolution compared to the main spectrometer measurements. The improvements (compared to Krijger et al., 2005) include a snow over vegetation detection and correction for SCIAMACHY PMD degradation.

1 Introduction

Satellite-based passive remote sensing is commonly used to derive global information about the composition of the Earth's atmosphere. Information about the total column or even vertical profiles of different gases in the Earth atmosphere can be obtained by measuring the radiance (intensity) spectrum of sunlight reflected by the Earth's atmosphere, since these spectra contain absorption bands of gases present in the atmosphere. In the ultra-violet, visible and near infra-red wavelength range the presence of clouds can strongly affect the observation of constituents in the troposphere, because clouds effectively screen the lower part of the atmosphere. When clouds are not properly accounted for, and especially when a significant part of the airmass of interest is below the cloud, (large) errors are introduced. Therefore, cloud detection algorithms are of crucial importance in satellite remote sensing.

The SCanning Imaging Absorption SpectroMeter for Atmospheric CartographY (SCIAMACHY) is a joint German/Dutch/Belgian instrument on board the ESA ENVISAT satellite, which was launched on 1 March 2002 and is still operational and providing exciting scientific results. SCIAMACHY is a grating spectrometer measuring the radiance

AMTD

4, 1113–1138, 2011

SCIAMACHY PMDs identification of clouds and ice/snow II

J. M. Krijger et al.

Title Page

Abstract

Introduction

Conclusions

References

Tables

Figures

⏪

⏩

◀

▶

Back

Close

Full Screen / Esc

Printer-friendly Version

Interactive Discussion

of reflected and back-scattered sunlight in the 240–2380 nm wavelength range at 0.2–1.5 nm spectral resolution. In order to account for the instrument polarisation sensitivity, SCIAMACHY measures the polarisation of reflected sunlight using seven broadband detectors, referred to as the Polarisation Measurement Devices (PMDs).

5 Several cloud-detection algorithms were developed for use in SCIAMACHY or GOME, its predecessor, like ICFA (Kuze and Chance, 1994), OCRA (Loyola, 1998), CRAG (von Bargaen et al., 2000), CRUSA (Wenig, 2001), FRESCO (Koelemeijer et al., 2001), SACURA (Kokhanovsky et al., 2003; Rozanov and Kokhanovsky, 2004), FRESCO+ (Wang et al., 2008), GOMECAT (Kurosu et al., 1998), HICRU (Grzegorski et al., 2004), SPICS (Lotz et al., 2009) and MICROS (Schludt et al., 2010). These methods either use the high spectral resolution measurements from the main spec-
10 trometer, the broadband PMD measurements, a combination of both, or external mea-
surements. Because both clouds and ice/snow covered surfaces are highly reflective and white in the visible wavelength range, many of these algorithms are unable to dis-
15 tinguish between clouds or ice/snow covered surfaces in the observation. In principle, cloud-detection methods using the O₂ A band, like FRESCO and SACURA, can deter-
mine the pressure and thus discriminate white clouds from a white surface, but this is not part of the current versions of these algorithms. Without the ability to distinguish
20 between cloudy and ice/snow covered surfaces, all observations over ice/snow covered surfaces are usually flagged as cloudy and therefore often not used. A method to dis-
tinguish between clouds and ice/snow covered surfaces is thus of crucial importance to be able to identify cloud-free observations.

Here we present an updated version of the SCIAMACHY PMD Identification of
25 Clouds and Ice/snow method (SPICI, pronounced with hard c). It uses, a.o. the SCIA-
MACHY PMD measurements in the wavelength range around 1.6 μm, where the re-
flectivity of ice/snow covered surfaces is significantly reduced while the reflectivity of
clouds is still high. Using this clear spectral difference in reflectivity a distinction be-
tween clouds and ice/snow covered surfaces in the SCIAMACHY observations can be
made. In this updated version we employ a normalised vegetation index to improve

**SCIAMACHY PMDs
identification of
clouds and ice/snow
II**

J. M. Krijger et al.

Title Page

Abstract

Introduction

Conclusions

References

Tables

Figures



Back

Close

Full Screen / Esc

Printer-friendly Version

Interactive Discussion



the distinction over vegetated surfaces and, for the first time, provide an accurate PMD degradation correction (valid for NADIR viewing).

The great strength of SPICI remains its simple implementation without the need of external datasets, allowing scientists to implement their own cloud-mask without downloading large datasets. In addition they can optimize the used thresholds based upon their own needs.

The structure of this paper is as follows. In Sect. 2 we describe SCIAMACHY and the Polarisation Measurement Devices on-board. The original SPICI algorithm is summarized in Sect. 3, with the new method to detect snow covered forests in Sect. 4 and the degradation correction in Sect. 5. Validation of the improved SPICI algorithm is presented in Sect. 6. We finish with a summary in Sect. 7.

2 SCIAMACHY polarisation measurement devices

2.1 SCIAMACHY

SCIAMACHY's primary mission objective is to perform global measurements of trace gases in the troposphere and stratosphere (Bovensmann et al., 1999). The instrument provides column and/or vertical profile information on O₃, H₂CO, SO₂, BrO, OCIO, NO₂, H₂O, CO, CO₂, CH₄, N₂O, O₂, (O₂)₂, and on clouds and aerosols as well. SCIAMACHY measures the radiance of reflected and back-scattered sunlight in 8 channels, covering the 240–1750 nm (channels 1–6) and two IR bands 1940–2040 nm and 2265–2380 nm (channels 7 and 8, respectively) at 0.2–1.5 nm spectral resolution. SCIAMACHY alternates between nadir and limb viewing modes for most part of the orbit. The swath of the instrument in nadir mode is 960 km, and the individual main channel measurements have a footprint on Earth ranging from 60 km × 30 km to 240 km × 30 km (across × along track), thereby providing global coverage in a period of six days (Bovensmann et al., 1999).

SCIAMACHY PMDs identification of clouds and ice/snow II

J. M. Krijger et al.

Title Page

Abstract

Introduction

Conclusions

References

Tables

Figures

⏪

⏩

◀

▶

Back

Close

Full Screen / Esc

Printer-friendly Version

Interactive Discussion

2.2 SCIAMACHY PMD measurements

SCIAMACHY is a highly polarisation-sensitive instrument due to the instrument's gratings and mirrors. Neglect of such polarisation sensitivity can lead to errors in the radiances of several tens of percent at wavelengths where the instrument polarisation sensitivity is highest. In order to correct for this polarisation sensitivity, SCIAMACHY measures the polarisation of reflected sunlight using seven broadband detectors, referred to as Polarisation Measurement Devices (see Table 1), which roughly cover the spectral range of the main spectrometer. Because the PMDs are mainly sensitive to parallel (to the instrument slit) polarised light, while the main channel spectrometer is sensitive to both polarisation components, information on the polarisation of the incoming light is obtained by combining the two measurements (Slijkhuis, 2000). The PMDs are read out at 40 Hz, but are down-sampled to 32 Hz for processing. This still gives a much better spatial resolution ($\sim 7 \text{ km} \times 30 \text{ km}$) than the main spectral channels where the fastest read-out occurs at 8 Hz, and more commonly at 1 Hz. This high PMD spatial resolution allows for easier detection of clouds which is the reason why we use the PMDs in the SPICI algorithm. In this paper we focus on four PMDs (PMD 2 to 5) that cover the visible and near-infrared wavelength range from 450 nm to 1700 nm.

Because we employ only the ratio between different PMD measurements any effect from polarisation on such ratios is due to the difference in polarisation-sensitivity or degree of polarisation. For all PMDs these differences are small, except PMD 1 and 7, which are not used in this study.

3 SPICI original

In Krijger et al. (2005) the complete derivation and validation of the SPICI algorithm is described. In brief, the SPICI method allows for fast and simple identification of cloud-free SCIAMACHY PMD observations. The NIR SCIAMACHY PMD measurements are employed to distinguish between clouds and ice/snow covered surfaces, which is

AMTD

4, 1113–1138, 2011

SCIAMACHY PMDs identification of clouds and ice/snow II

J. M. Krijger et al.

Title Page

Abstract

Introduction

Conclusions

References

Tables

Figures

⏪

⏩

◀

▶

Back

Close

Full Screen / Esc

Printer-friendly Version

Interactive Discussion



more complicated employing the visible wavelengths only. The method employs the ratios of different SCIAMACHY PMD measurements which makes the approach very robust with respect to e.g. calibration uncertainties. The threshold values were defined using collocated observations with the well known and validated high-spatial resolution MODIS data.

The initial algorithm consists of two steps: In the first step the algorithm only uses PMD 2, 3 and 4 to determine the presence of a white surface in the visible wavelength range. Because at these wavelengths one cannot separate clouds from ice/snow covered surfaces, a second step is needed to finally detect cloud-free observations also over ice/snow covered surfaces.

The SPICI method is easily implemented and can be summarised as follows:

$$\begin{aligned}
 W_4 &= S_4/0.795 \\
 W_3 &= S_3/1.000 \\
 W_2 &= S_2/0.750 \\
 T(\text{Saturation}) &= \frac{\max(W_4, W_3, W_2) - \min(W_4, W_3, W_2)}{\max(W_4, W_3, W_2)} \\
 \text{Cloud - free} &: T \geq 0.35 \\
 \text{Ice/Snow clear} &: T < 0.35 \ \& \ \frac{S_5}{S_4} \leq 0.16 \\
 \text{Cloud} &: T < 0.35 \ \& \ \frac{S_5}{S_4} \geq 0.16
 \end{aligned} \tag{1}$$

with instrument signal S_i from PMD i (in BU, dark-signal-corrected). The threshold values were tuned so cloudy observations are rarely flagged cloud-free, although some cloud-free observations are mistakenly flagged cloudy. The thresholds can be somewhat relaxed in cases where some cloud contamination is acceptable. Studies extremely sensitive to clouds should decrease the saturation threshold to values as low as 0.1.

**SCIAMACHY PMDs
identification of
clouds and ice/snow
II**

J. M. Krijger et al.

Title Page

Abstract

Introduction

Conclusions

References

Tables

Figures

⏪

⏩

◀

▶

Back

Close

Full Screen / Esc

Printer-friendly Version

Interactive Discussion



4 Snow and forest

After its publication, SPICI became part of the official ESA level 2 product. Its extensive use revealed that SPICI declared large areas in northern America and Asia as always cloudy during the snow season. This is common behaviour for cloud-retrieval algorithms that cannot distinguish between snow and clouds, but SPICI was intended to make this distinction. These areas turn out to be boreal forests with snow-covered leaves that have a similar reflectance ratio between 85 nm and 1600 nm as water/ice clouds, varying slightly depending on the snow fraction. To overcome this deficiency, we use a normalized difference snow and vegetation indices as used (among others) by MODIS¹, but adapted to SCIAMACHY data. The PMD 2/PMD 5 ratio is a snow index, using the fact that snow has high visible reflectance and low infrared reflectance, while clouds have the same reflectance at both wavelength ranges: if the ratio is high enough, the pixel is snow-covered. However, this snow index can become too small in forested locations with snow, which leads to the original problem of misidentifying snow as cloud. Therefore the snow index is used in combination with a vegetation index: the PMD 4/PMD 3 ratio. The vegetation index is based on the fact that plants absorb red light and reflect near-infrared light, i.e. vegetation has a high index. Even snow-covered forests have a relatively high vegetation index. To mark these areas as cloud-free, without including other land types with clouds, the snow index is allowed to be lower when the vegetation index is higher. Figure 1 illustrates this by showing a density plot with the ratio of the number of cloud-free and clouded observations (according to collocated MODIS observations) as a function of SCIAMACHY PMD 4/PMD 3 and PMD 2/PMD 5. The exact ratio is indicated in the color bar going from cloud-dominated (blue) to cloud-free dominated (red). Note that the upper right region is completely dominated by cloud-free observations. Given the still uncalibrated state of the SCIAMACHY PMDs an empirical fit was made to this area, allowing a maximum of 10% mis-identified scenes (snow-covered while actually cloudy according to MODIS). The

¹<http://modis-snow-ice.gsfc.nasa.gov/>

SCIAMACHY PMDs identification of clouds and ice/snow II

J. M. Krijger et al.

Title Page

Abstract

Introduction

Conclusions

References

Tables

Figures

⏪

⏩

◀

▶

Back

Close

Full Screen / Esc

Printer-friendly Version

Interactive Discussion



obtained fit is shown in Fig. 1 as the solid curve. In the new version of SPICl all observations in this area (which have been deemed cloudy in the first step of the SPICl algorithm) are now considered snow-covered (and thus cloud-free) instead. This can be formulated as follows:

$$\begin{aligned}
 W_{43} &= (S_4/0.795)/S_3 \\
 W_{25} &= S_2/S_5 \\
 \text{Ice/Snow} \quad W_{43} &\geq 0.77 + 1/(W_{25} - 0.08)
 \end{aligned}
 \tag{2}$$

Figure 2 shows the locations of these observations (that went from clouded to cloud-free in the new version of SPICl) correspond with boreal forest.

5 Degradation

The spectrometer SCIAMACHY on ENVISAT has been collecting data since launch in 2002. Over the years the exposure to space has affected the optical performance and rendered the on-ground calibration data increasingly more outdated. One of the main long-term monitoring activities to be performed over the mission's lifetime is to trace the degradation of optical components. Therefore regular trend analyses to measurement data are obtained with the internal WLS and of observations of the unobscured sun above the atmosphere. In order to monitor the different SCIAMACHY light paths, solar measurements are taken in various viewing geometries, yielding so called m-factors to describe and correct for the degradation (Bramstedt, 2009). M-factors are generated for each of the SCIAMACHY light paths (nadir, limb and the calibration light path). Indications are that the major degrading element in the SCIAMACHY optical path seems to be the ESM mirror. For the science channels m-factors are multiplicative correction factors as applied to the absolute radiometric calibration. This is different to the PMD channels where the m-factors impact the polarisation correction in a more complex way. For the PMDs similar m-factors are derived (while at moment of this writing not applied to SCIAMACHY PMD data, they are available on-line). However, the solar and

SCIAMACHY PMDs identification of clouds and ice/snow II

J. M. Krijger et al.

Title Page

Abstract

Introduction

Conclusions

References

Tables

Figures

⏪

⏩

◀

▶

Back

Close

Full Screen / Esc

Printer-friendly Version

Interactive Discussion



SCIAMACHY PMDs identification of clouds and ice/snow II

J. M. Krijger et al.

Title Page

Abstract

Introduction

Conclusions

References

Tables

Figures

⏪

⏩

◀

▶

Back

Close

Full Screen / Esc

Printer-friendly Version

Interactive Discussion



white light source observations are performed at different scan-angles from those used during normal nadir scanning, which especially affects the PMDs as polarisation is very dependent on scan-mirror angle (Schutgens and Stammes, 2003; Krijger et al., 2009). Therefore we searched for alternative methods to determine PMD degradation. The SPICI application requires only ratios of PMD signals, therefore we are only interested in relative degradation. For GOME it was shown that the different PMDs degrade initially at the same rate and therefore the signal ratios remain constant, but eventually the changes will be different and the SPICI threshold should be adjusted. Here we choose therefore to correct the PMD ratios and not the individual PMDs.

The large wavelength range covered by the PMDs require different methods to assess the amount of degradation. For the visible wavelengths the same assumption can be made as for the original SPICI algorithm, namely that clouds are white and remain so over time. We identify fully clouded pixels according the FRESCO algorithm. The behaviour in time of the PMD pixels is indicated as the corresponding 'FRESCO' method in Fig. 3. SCIAMACHY main science channels show scan-angle dependent degradation (Bramstedt, 2009), therefore we checked for a similar effect in the PMDs by separating the FRESCO cloudy PMD observations into Extreme-East, East, West and Extreme West. Only in the ratio of the PMD 2 and PMD 3 signals a slight scan-angle dependent effect can be observed, but given the observed uncertainties this effect can at this moment be ignored. An alternative and immediate verification of the PMD degradation in the SPICI algorithm is by only monitoring the most color-saturated PMD observations ($T < 0.1$). This is shown as the "SPICI" method in Fig. 3, and it is clear the different methods agree.

For the non-visible wavelengths this approach can no longer be used, as ice/water clouds appear slightly differently in the infrared. However, the radiance at scenes like the Libyan desert is expected to be rather constant. In Fig. 3 we have plotted all PMD observations over the Libyan desert as a function of time showing the direct relative degradation.

SCIAMACHY PMDs identification of clouds and ice/snow II

J. M. Krijger et al.

Title Page	
Abstract	Introduction
Conclusions	References
Tables	Figures
⏪	⏩
◀	▶
Back	Close
Full Screen / Esc	
Printer-friendly Version	
Interactive Discussion	

An alternative method uses the fact that in the infrared only a few different dominant albedo regimes are present. When observing the distribution of PMD 5/PMD 4 measurements, it immediately becomes clear that there are three dominant ratios, one from ice/snow/clouds (low values), one from desert areas (high values) and one from ocean combined with other land observations (middle values). Relative PMD degradation will shift the absolute values of these distributions but not the shape of the distribution, except for a squeeze. See Fig. 4 for an example of the distribution of the PMD 5/PMD 4 ratio in January 2003 (black), where no degradation is expected yet and the same month in 2009 (red). Notice the presence of the three maxima, but the squeezing of the shape as a result of relative degradation. We have determined for each 8 day period the distribution shape of the PMD 5/PMD 4 ratios and the squeeze of the shape, thus assuming a multiplicative degradation. The degradation as obtained from this method is in good agreement with the results from other methods in Fig. 3 (bottom right, labeled “Profile”). All methods show in varying degree a small amount of seasonal variation, however these variations do not change the general observed trend.

As expected these curves shown in Fig. 3 differ from the PMD m-factors due to the different scan angles. Fig. 3 shows that all relative PMD degradation appears linear in time in first approximation. A linear fit was made through the combination of all methods (except the m-factors) for each PMD ratio as a function of modified Julian date (days since 1 January 2000). The results of the fits are shown in Table 2. These fits will allow correction for ‘relative’ PMD degradation in nadir viewing observations.

6 Validation

Originally SPICI was validated on specific co-located scenes observed very close in time by both SCIAMACHY and MODIS. However the improved SPICI requires a larger scale validation due to the long-term use of SCIAMACHY on the one hand and global application on the other. Several methods were employed for validation.



6.1 MICROS

Recently Schlundt et al. (2010) developed a new algorithm, called MICROS (**Mer**ls **Cloud fR**action **fO**r **Sc**iamachy), to determine an accurate geometric cloud fraction for SCIAMACHY ground scenes at nadir using MERIS spectral observations. The MICROS algorithm is the improved version of MCFA (**MERIS Cloud Fraction Algorithm**) by Kokhanovsky et al. (2009). While much more accurate than SPICl it has still problems detecting snow/ice and requires the download of large external datasets together with collocation information of the observations. However, because of the close collocation in both space and time between MERIS and SCIAMACHY (both on ENVISAT) it is well suited for validation of SPICl. We describe the method briefly here.

6.1.1 MERIS

MERIS (MEdium Resolution Imaging Spectrometer) is a multi-spectral instrument, also mounted on the ENVISAT satellite. It measures the solar radiation reflected by the Earth's atmosphere or surface in the visible and near-infrared part of the electromagnetic spectrum between 390 and 1040 nm at a spectral resolution of 1.8 nm (Bezy and Rast, 1999). By looking in the nadir direction, the Earth is imaged with a spatial resolution of $1.2 \times 1.2 \text{ km}^2$ at reduced resolution (RR; operational) and $300 \times 300 \text{ m}^2$ at full resolution (FR; coastal zones and over land). The instrument's field of view is about 68.5° covering a swath width of 1150 km, which yields a global coverage every three days.

The MERIS RR data are used as sub-pixel information for the relatively large SCIAMACHY pixel which enables the derivation of SCIAMACHY cloud fraction with an accuracy much higher when compared to PMD based cloud fraction. Both instruments observe the same ground scene simultaneously.

AMTD

4, 1113–1138, 2011

SCIAMACHY PMDs identification of clouds and ice/snow II

J. M. Krijger et al.

Title Page

Abstract

Introduction

Conclusions

References

Tables

Figures

⏪

⏩

◀

▶

Back

Close

Full Screen / Esc

Printer-friendly Version

Interactive Discussion



6.1.2 Method

The purpose of the MERIS cloud screening part in MICROS is to identify each pixel as either clear land, clear water or cloud, as described in full detail in Schlundt et al. (2010). Difficulties arise particularly with regard to clouds over bright surfaces, such as snow/ice covered regions, deserts or sun glint areas, which are treated separately by the MICROS algorithm. The algorithm, based on the threshold approach of various MERIS channels (from 412.5 nm to 865 nm), is made up of several steps where specific conditions are checked in order to distinguish between sun glint, water, land, bare soil, snow/ice, optically thin and thick clouds. The very last step of the MERIS cloud screening takes cloud border and adjacency effects (e.g., cloud shadowing or increased radiation by actinic flux) into account. This is done by additionally flagging the two adjacent pixels also as cloudy (in all directions), when a clouded MERIS pixels is found.

6.1.3 Results

We have compared the MICROS thick cloud fraction with the SPICI cloud fraction (averaged over the same main science channel footprint) for a total of 90 orbits randomly selected between 2005 and 2009, focussing here on the lower (snow-free) latitudes, both as function of location and time. In 61% ($\pm 8\%$ standard deviation between different orbits) of all cases both MICROS and SPICI agree on an observation being cloudy, in 27% ($\pm 6\%$) both agree on an observation being cloud-free. In 9% ($\pm 4\%$) SPICI classifies a pixel as cloudy, while according to MICROS the observation is cloud-free. However again the main issue is how often SPICI identifies a clouded scene (according to MICROS) as cloud-free, and according to this comparison a total of only 3% ($\pm 2\%$) of the measurements is misidentified, and these are all scenes which according to MICROS only have a very small amount of cloud present (which some trace gas retrievals can cope with) or are at the (always uncertain) edges of clouds, where MICROS also flags adjacent unclouded MERIS observations as clouded, to take adjacency effects

SCIAMACHY PMDs identification of clouds and ice/snow II

J. M. Krijger et al.

Title Page

Abstract

Introduction

Conclusions

References

Tables

Figures

◀

▶

◀

▶

Back

Close

Full Screen / Esc

Printer-friendly Version

Interactive Discussion



into account. These fractions do not change within the uncertainties over time, indicating that the degradation is accurately corrected.

6.2 FRESCO

We performed another validation with the FRESCO+ algorithm (Wang et al., 2008), which uses the O₂A band to detect clouds. The algorithm was originally developed for GOME-1 (Koelemeijer et al., 2001), has been successfully applied to SCIAMACHY and constantly improved since that time. While it can only detect effective cloud fraction, it does a good job of detecting the presence of clouds, although not yet over snow/ice covered scenes. As such we focus our comparison here with SPICI on snow/ice free scenes. For each FRESCO cloud retrieval we average the collocated SPICI (PMD) measurements. We selected a number of random days, 1 January 2003, 1 September 2008, 1 January 2009 and 1 January 2010 (to also determine degradation effects). In 66% ($\pm 2\%$) of all cases both FRESCO and SPICI agree on an observation being cloudy, in 22% ($\pm 1\%$) both agree on an observation being cloud-free. In 8% ($\pm 4\%$) SPICI classifies a pixel as cloudy, while according to FRESCO the observation is cloud-free. Again the main issue is how often SPICI identifies a clouded scene as cloud-free, and according to this comparison a total of only 4% ($\pm 0.2\%$) of the measurements is misidentified, and these are all scenes which according to FRESCO only have a very small amount of cloud present (which some trace gas retrievals can cope with).

6.3 Snow filter

As both MERIS and SCIAMACHY FRESCO are not (well) suited for cloud detection over snow/ice surfaces, we employed AATSR to validate our SPICI snow/ice cloud detection including the applied degradation correction. For this the improved AATSR snow detection method first presented in Istomina et al. (2010) were used.

SCIAMACHY PMDs identification of clouds and ice/snow II

J. M. Krijger et al.

Title Page

Abstract

Introduction

Conclusions

References

Tables

Figures

⏪

⏩

◀

▶

Back

Close

Full Screen / Esc

Printer-friendly Version

Interactive Discussion



6.3.1 AATSR

The AATSR (Advanced Along Track Scanning Radiometer) instrument onboard the ENVISAT satellite is a low-resolution conical imaging spectrometer operating in the visible, near-infrared, mid-infrared and thermal spectrum ranges. The prime scientific objective of AATSR is to establish continuity of the ATSR-1 and ATSR-2 data sets of precise sea surface temperature (SST), thereby ensuring the production of a 10 year near-continuous data set for climate research. The (A)ATSR instruments are unique in their use of along track scanning to provide two views of the surface, and thus improve possibilities for atmospheric correction. The surface is first viewed along the direction of the orbit track, at an angle of 55° (forward view), as the spacecraft flies towards the scene. Then, 150 seconds later, when the satellite has moved approximately 1000 km along the ground track, a second observation of the same scene is made at the sub-satellite point (nadir view). The nominal pixel size of AATSR is $1 \text{ km} \times 1 \text{ km}$ at the center of the nadir swath and $1 \text{ km} \times 2 \text{ km}$ at the center of the forward swath. The AATSR field of view comprises two 512 km wide curved swaths, with 555 pixels across the nadir swath and 371 pixels across the forward swath.

6.3.2 Method and dataset

The cloud/snow discrimination method described in full detail in Istomina et al. (2010) uses a combination of relative thresholds in seven AATSR channels in order to discriminate the spectral behavior of clear snow scene from that of cloud, land, ocean, etc. These criteria connect nadir top-of-atmosphere reflectance in visible, near-infrared and brightness temperatures in the thermal-infrared. While the visible and near-infrared criteria select scenes with the spectral behaviour similar to a snow spectrum, the thermal infrared (TIR) thresholds distinguish cloud-free areas over surfaces with emissivity close to unity (snow, open ocean).

The validation dataset contains 100 daytime AATSR scenes with approximate dimensions $10^\circ \times 15^\circ$ each, with a spatial resolution of $1 \text{ km} \times 1 \text{ km}$ (nadir view). It covers

SCIAMACHY PMDs identification of clouds and ice/snow II

J. M. Krijger et al.

Title Page

Abstract

Introduction

Conclusions

References

Tables

Figures



Back

Close

Full Screen / Esc

Printer-friendly Version

Interactive Discussion



**SCIAMACHY PMDs
identification of
clouds and ice/snow
II**

J. M. Krijger et al.

Title Page	
Abstract	Introduction
Conclusions	References
Tables	Figures
⏪	⏩
◀	▶
Back	Close
Full Screen / Esc	
Printer-friendly Version	
Interactive Discussion	

the timespan of nearly 6 years, starting in 2003 and ending in 2009, with most data from 2008 (42 scenes). The vast majority of scenes has been observed in the Western Hemisphere beyond the Arctic Circle, at particular locations like Northern Alaska, Beaufort Sea, Queen Elisabeth Islands and Greenland. A few scenes have been observed in the Eastern Hemisphere, at Spitsbergen and the Scandinavian Peninsula. All the data have been observed from March to May, to ensure sufficient snow coverage and enough daylight (solar zenith angle from 50° to 80°). Depending on location, our validation dataset features different surface types covered with almost continuous snow coverage: snow-covered sea ice, snow-covered mountains and fjords. Partial snow coverage like e.g. in the case of snowy forests has been avoided in this dataset. Open ocean and bare soil areas are almost not represented in the dataset.

6.3.3 Results

Figure 5 shows for two example AATSR observations the snow fraction (the number of cloud-free snow-covered scenes observations by AATSR divided by the total number of AATSR scenes inside the SCIAMACHY PMD scene) for each collocated SCIAMACHY PMD footprint. Only SCIAMACHY measurements with a solar zenith angle smaller than 89° are shown. Red indicates a large snow/ice fraction, decreasing through yellow to blue, which indicates non-snow/ice surfaces (sea, clouds, land cover other than snow, etc). Each PMD footprint that according to SPICl is a cloud-free snow covered scene has been outlined in black.

SPICl clearly detects most of these cloud-free snow-covered scenes, while rarely misidentifying cloudy scenes: only 2–5% of all observations of the cases we studied (not all shown here). This happens mostly at the edges of large snow-covered scenes, most likely due to thin transparent clouds over snow-covered scenes. However, as most SCIAMACHY trace-gas observations use an integration time of 0.25 s to 1 s (compared to the 0.03125 s of the PMDs), one must combine 8 to 32 PMD measurements to determine an average cloud-fraction. Since most trace-gas observation methods ignore an observation when even a single PMD measurement indicates clouds, such minor edge



effects of a single PMD footprint can be ignored as most neighbouring footprints will already indicate a cloud. Also the number of misidentifications over time remains quite constant, showing that the degradation correction works for the snow/ice detection part of SPICI.

7 Summary

We presented an improved version of the SCIAMACHY PMD Identification of Clouds and Ice/snow method (SPICI), using the SCIAMACHY measurements in the wavelength range between 450 nm and 1.6 μ m to make a distinction between clouds and ice/snow covered surfaces, specifically developed to identify cloud-free SCIAMACHY observations. The SCIAMACHY Polarisation Measurement Devices (PMDs) are used because they provide higher spatial resolution compared to the main spectrometer measurements. The improvements (compared to Krijger et al., 2005) include a snow over vegetation detection using the PMD 2/PMD 5 compared to PMD 4/PMD 3 ratio for the least saturated, T (= cloudy) observations. In addition we provided a correction for SCIAMACHY PMD degradation, obtained by various methods (namely by observing clouds, deserts and albedo distribution profiles), which result in different corrections than the traditional M-factors, as expected due to angle dependant scan-mirror contamination.

Including both the new expansion for snow-covered forest and the PMD degradation correction, the new SPICI algorithm can be summarized as follows:

$$\begin{aligned}
 W_4 &= S_{\text{PMD4}}/0.795/(1.0591 - 5.384 \times 10^{-5} \times m) \\
 W_3 &= S_{\text{PMD3}}/1.000 \\
 W_2 &= S_{\text{PMD2}}/0.750/(1.0085 - 7.696 \times 10^{-6} \times m) \\
 W_{54} &= S_{\text{PMD5}}/S_{\text{PMD4}} * (1.070 - 6.375 \times 10^{-6} \times m) \\
 W_{43} &= W_4/W_3 \\
 W_{25} &= S_{\text{PMD2}}/S_{\text{PMD5}}/(1.021 - 1.952 \times 10^{-5} \times m)
 \end{aligned} \tag{3}$$

SCIAMACHY PMDs identification of clouds and ice/snow II

J. M. Krijger et al.

Title Page

Abstract

Introduction

Conclusions

References

Tables

Figures

◀

▶

◀

▶

Back

Close

Full Screen / Esc

Printer-friendly Version

Interactive Discussion



$$T(\text{Saturation}) = \frac{\max(W_4, W_3, W_2) - \min(W_4, W_3, W_2)}{\max(W_4, W_3, W_2)}$$

Cloud – free : $T \geq 0.35$

Ice/Snow : $T < 0.35$ AND (4)
 $\{W_{54} \leq 0.16$ OR
 $W_{43} \geq 0.77 + 1/(W_{25} - 0.08)\}$

Cloud : Remainder,

with m the modified Julian date MJD2000. When validated with AATSR's most advanced method of cloud-free snow detection and MERIS's most advanced method of cloud detection, SPICI works extremely well, with less than 5% misidentifications where clouded observations are identified as cloud-free.

8 Concluding

The improved SPICI method allows quick and easy identification of cloud-free SCIAMACHY observations, even over (partly) snow/ice covered regions, while taking the SCIAMACHY PMD degradation into account.

Acknowledgements. The authors would like to thank Richard van Hees, Pieter van der Meer, Ralph Snel and Georgina Miles for their discussions, input and comments. The authors thank Ping Wang for useful discussions on the FRESCO+ algorithm and for providing the FRESCO+ data. The authors acknowledge SRON and in particular Richard van Hees for providing the NADC tools and patched SCIAMACHY level 1b data products, and ESA for providing AATSR, and MERIS data. SCIAMACHY is a joint project of the German Space Agency DLR and the Dutch Space Agency NIVR with contribution of the Belgian Space Agency. The authors thank the Netherlands SCIAMACHY Data Center and ESA for providing SCIAMACHY data. The work performed is (partly) financed by NSO (formerly NIVR). This paper is dedicated to the memory of Annemieke Gloudemans, for her inspiration and insights.

SCIAMACHY PMDs identification of clouds and ice/snow II

J. M. Krijger et al.

Title Page

Abstract

Introduction

Conclusions

References

Tables

Figures

⏪

⏩

◀

▶

Back

Close

Full Screen / Esc

Printer-friendly Version

Interactive Discussion



References

- Bezy, J. L. and Rast, M.: The ESA Medium Resolution Imaging Spectrometer MERIS a review of the instrument and its mission, *Int. J. Remote Sens.*, 20, 1681–1702, doi:10.1080/014311699212416, 1999. 1123
- 5 Bovensmann, H., Burrows, J. P., Buchwitz, M., Frerick, J., Noel, S., Rozanov, V. V., Chance, K. V., and Goede, A. P. H.: SCIAMACHY: Mission objectives and measurement modes, *J. Atmos. Sci.*, 56, 127–150, 1999. 1116
- Bramstedt, K.: SCIAMACHY Monitoring factors: observation and end-to-end correction of instrument performance degradation, in: *Atmospheric Science Conference Proceedings, SP-676*, 2009. 1120, 1121
- 10 Grzegorski, M., Frankenburg, C., Plat, U., Wenig, M., Fournier, N., Stammes, P., and Wagner, T.: Determination of cloud parameters from SCIAMACHY data for the correction of tropospheric trace gases, in: *Proceedings of the ENVISAT & ERS Symposium, 6–10 September 2004, Salzburg, Austria, ESA publication SP-572, (CD-ROM)*, 2004. 1115
- 15 Istomina, L. G., von Hoyningen-Huene, W., Kokhanovsky, A. A., and Burrows, J. P.: The detection of cloud-free snow-covered areas using AATSR measurements, *Atmos. Meas. Tech.*, 3, 1005–1017, doi:10.5194/amt-3-1005-2010, 2010. 1125, 1126
- Koelemeijer, R. B. A., Stammes, P., Hovenier, J. W., and de Haan, J. F.: A fast method for retrieval of cloud parameters using oxygen A band measurements from the Global Ozone Monitoring Experiment, *J. Geophys. Res.*, 3475–3490, 2001. 1115, 1125
- 20 Kokhanovsky, A. A., Rozanov, V. V., E. P. Zege, H. B., and Burrows, J. P.: A semianalytical cloud retrieval algorithm using backscattered radiation in 0.4–2.4 μm spectral region, *J. Geophys. Res.*, 108, 4008, doi:10.1029/2001JD001543, 2003. 1115
- Kokhanovsky, A. A., von Hoyningen-Huene, W., and Burrows, J. P.: Determination of the cloud fraction in the SCIAMACHY ground scene using MERIS spectral measurements, *Int. J. Remote Sens.*, 30, 6151–6167, doi:10.1080/01431160902842326, 2009. 1123
- 25 Krijger, J., Snel, R., and Slijkhuis, S.: Revised Polarisation calibration of SCIAMACHY, in: *Atmospheric Science Conference Proceedings, SP-676*, 2009. 1121
- Krijger, J. M., Aben, I., and Schrijver, H.: Distinction between clouds and ice/snow covered surfaces in the identification of cloud-free observations using SCIAMACHY PMDs, *Atmos. Chem. Phys.*, 5, 2729–2738, doi:10.5194/acp-5-2729-2005, 2005. 1114, 1117, 1128
- 30

SCIAMACHY PMDs identification of clouds and ice/snow II

J. M. Krijger et al.

Title Page

Abstract

Introduction

Conclusions

References

Tables

Figures

◀

▶

◀

▶

Back

Close

Full Screen / Esc

Printer-friendly Version

Interactive Discussion



SCIAMACHY PMDs identification of clouds and ice/snow

II

J. M. Krijger et al.

Title Page

Abstract

Introduction

Conclusions

References

Tables

Figures

◀

▶

◀

▶

Back

Close

Full Screen / Esc

Printer-friendly Version

Interactive Discussion



- Kurosu, T., Chance, K., and Spurr: Cloud Retrieval Algorithm for the European Space Agency's Global Ozone Monitoring Experiment, in: Proceedings of SPIE, EUROPTO Series: Satellite Remote Sensing of Clouds and the Atmosphere III, edited by: Russel, J. E., 495, 17–26, 1998. 1115
- 5 Kuze, A. and Chance, K. V.: Analysis of cloud top height and cloud coverage from satellites using the O₂ A and B bands, *J. Geophys. Res.*, 99, 14481–14491, 1994. 1115
- Lotz, W. A., Vountas, M., Dinter, T., and Burrows, J. P.: Cloud and surface classification using SCIAMACHY polarization measurement devices, *Atmos. Chem. Phys.*, 9, 1279–1288, doi:10.5194/acp-9-1279-2009, 2009. 1115
- 10 Loyola, D.: A New Cloud Recognition Algorithm for Optical Sensors, in: IEEE International Geoscience and Remote Sensing Symposium, volume 2 of IGARSS 1998 Digest, 572–574, 1998. 1115
- Rozanov, V. V. and Kokhanovsky, A. A.: Semianalytical cloud retrieval algorithm as applied to the cloud top altitude and the cloud geometrical thickness determination from top-of-atmosphere reflectance measurements in the oxygen A band, *J. Geophys. Res.-Atmos.*, 109, D5202, doi:10.1029/2003JD004104, 2004. 1115
- 15 Schlundt, C., Kokhanovsky, A. A., von Hoyningen-Huene, W., Dinter, T., Istomina, L., and Burrows, J. P.: Synergetic cloud fraction determination for SCIAMACHY using MERIS, *Atmos. Meas. Tech. Discuss.*, 3, 3601–3642, doi:10.5194/amtd-3-3601-2010, 2010. 1115, 1123, 1124
- 20 Schutgens, N. A. J. and Stammes P.: A novel approach to the polarization correction of spaceborne spectrometers, *J. Geophys. Res.*, 108(D7), 4229, doi:10.1029/2002JD002736, 2003. 1121
- Slijkhuis, S.: ENVISAT-1 SCIAMACHY Level 0 to 1c Processing, Algorithm Theoretical Basis Document, issue 2 (ENV-ATB-DLR-SCIA-0041), Tech. rep., DLR, 2000. 1117
- 25 von Barga, A., Kurosu, T., Chance, K., Loyola, D., Aberle, B., and Spurr, R. J.: Cloud Retrieval Algorithm for GOME (CRAG), Report ER-TN-DKLR-CRAG-007, European Space Agency (ESA/ESTEC), Noordwijk, 2000. 1115
- Wang, P., Stammes, P., van der A, R., Pinardi, G., and van Roozendaal, M.: FRESCO+: an improved O₂ A-band cloud retrieval algorithm for tropospheric trace gas retrievals, *Atmos. Chem. Phys.*, 8, 6565–6576, doi:10.5194/acp-8-6565-2008, 2008. 1115, 1125
- 30 Wenig, M.: Satellite Measurements of Long-Term Global Tropospheric Trace Gas Distributions and Source Strengths, Ph.D. thesis, University of Heidelberg, Germany, 2001. 1115

SCIAMACHY PMDs identification of clouds and ice/snow II

J. M. Krijger et al.

Title Page

Abstract

Introduction

Conclusions

References

Tables

Figures

⏪

⏩

◀

▶

Back

Close

Full Screen / Esc

Printer-friendly Version

Interactive Discussion



Table 1. Wavelength ranges of SCIAMACHY Polarisation Measurement Devices, containing 80% of the signal.

PMD	range (nm)
1	310–365
2	455–515
3	610–690
4	800–900
5	1500–1635
6	2280–2400
7	800–900 (U-sensitive)

SCIAMACHY PMDs identification of clouds and ice/snow II

J. M. Krijger et al.

Title Page

Abstract

Introduction

Conclusions

References

Tables

Figures

⏪

⏩

◀

▶

Back

Close

Full Screen / Esc

Printer-friendly Version

Interactive Discussion



Table 2. Linear fit description of the various relative PMD degradation, with m the modified Julian date MJD2000.

PMD 2/3	1.0085	$-7.696 \times 10^{-6} \times m$
PMD 4/3	1.0591	$-5.384 \times 10^{-5} \times m$
PMD 2/5	1.0210	$-1.952 \times 10^{-5} \times m$
PMD 4/5	1.0700	$-6.375 \times 10^{-6} \times m$

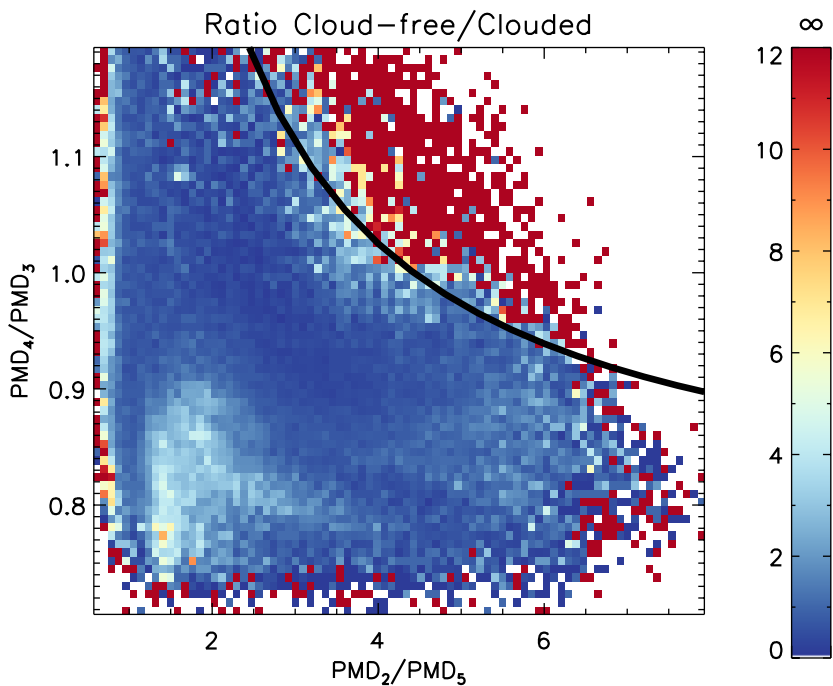


Fig. 1. Density plot showing the ratio of the number of cloud-free and clouded observations (according to MODIS) as a function of the SCIAMACHY ratios PMD 4/PMD 3 and PMD 2/PMD 5. Note that dark red indicates no cloudy measurements were present for those particular ratios, while white at the edges of the image indicates no measurements were present at all. The black curve indicates the cloud-free optimised boundary between the cloud-free and clouded regions.

**SCIAMACHY PMDs
identification of
clouds and ice/snow
II**

J. M. Krijger et al.

Title Page

Abstract Introduction

Conclusions References

Tables Figures

⏪ ⏩

⏴ ⏵

Back Close

Full Screen / Esc

Printer-friendly Version

Interactive Discussion



**SCIAMACHY PMDs
identification of
clouds and ice/snow
II**

J. M. Krijger et al.

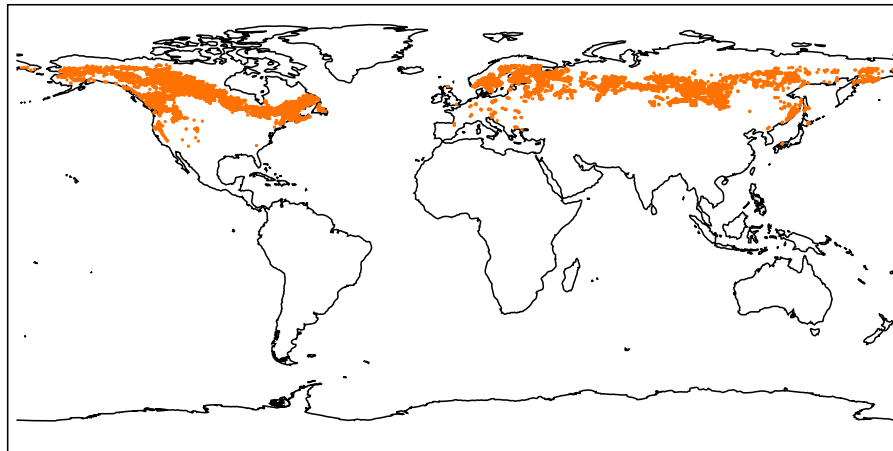


Fig. 2. The locations of measurements that the new snow and forest test indicates as being snow-covered forests instead of clouds during January 2003. All locations are found over boreal forest.

[Title Page](#)[Abstract](#)[Introduction](#)[Conclusions](#)[References](#)[Tables](#)[Figures](#)[◀](#)[▶](#)[◀](#)[▶](#)[Back](#)[Close](#)[Full Screen / Esc](#)[Printer-friendly Version](#)[Interactive Discussion](#)

SCIAMACHY PMDs identification of clouds and ice/snow II

J. M. Krijger et al.

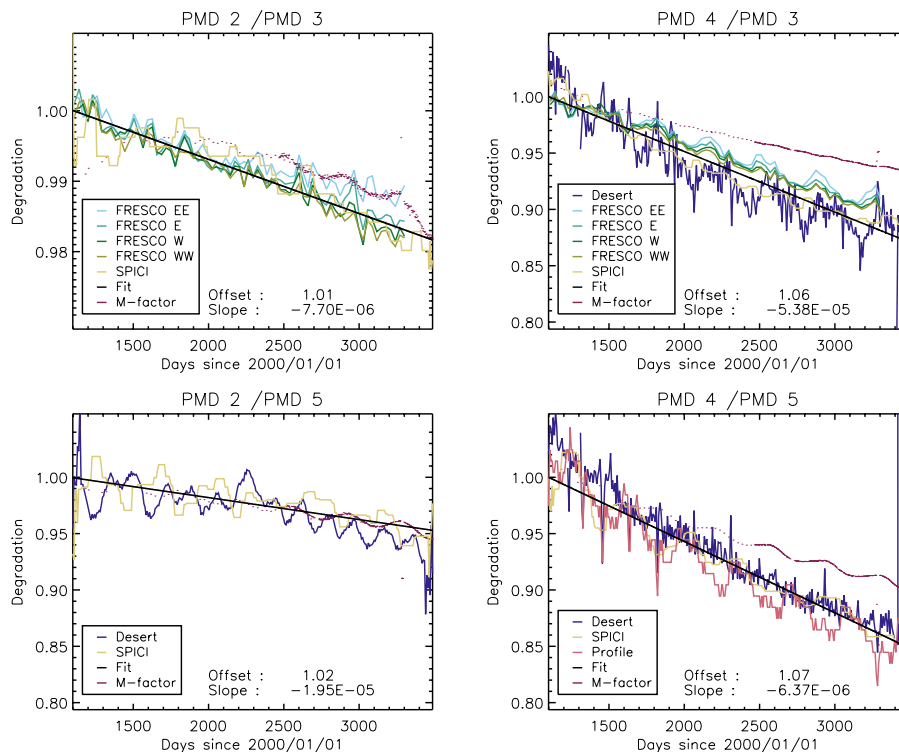


Fig. 3. Degradation for different PMD ratios (indicated at top) and for different methods (colour-coded, detailed description of methods in the main text) as a function of time. Indicated at the bottom of each figure are the components of a linear fit to the degradation, which can be used for degradation correction.

[Title Page](#)
[Abstract](#)
[Introduction](#)
[Conclusions](#)
[References](#)
[Tables](#)
[Figures](#)
[◀](#)
[▶](#)
[◀](#)
[▶](#)
[Back](#)
[Close](#)
[Full Screen / Esc](#)
[Printer-friendly Version](#)
[Interactive Discussion](#)

SCIAMACHY PMDs identification of clouds and ice/snow II

J. M. Krijger et al.

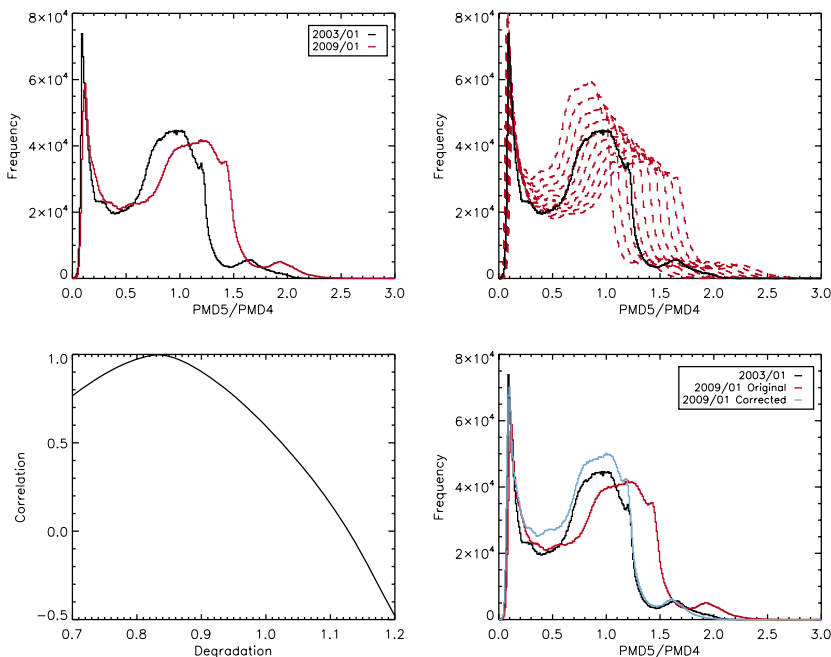


Fig. 4. The top-left panel shows the distribution profile of PMD 5/PMD 4 ratio as original in January 2003 (black), and the profile in January 2009 (red). It is clear that they have a similar profile with several maxima, apart from a shift. In the top-right panel the distribution of the PMD 5/PMD 4 ratio is again shown but now the January 2009 PMD 5/PMD 4 ratio has been multiplied with increasing degradation values, thus shifting the profile distribution. The bottom-left panel shows the correlation between the January 2009 and original January 2003 profile distribution, as a function of the applied degradation factor. From this panel the most likely (best correlated) degradation factor can be determined. The bottom-right panel repeats the upper-left panel, but now adds the degradation corrected profile for January 2009, showing the similarity in profiles. Repeating this method for each month allows determination of the degradation for the PMD 4/PMD 5 ratio.

SCIAMACHY PMDs identification of clouds and ice/snow II

J. M. Krijger et al.

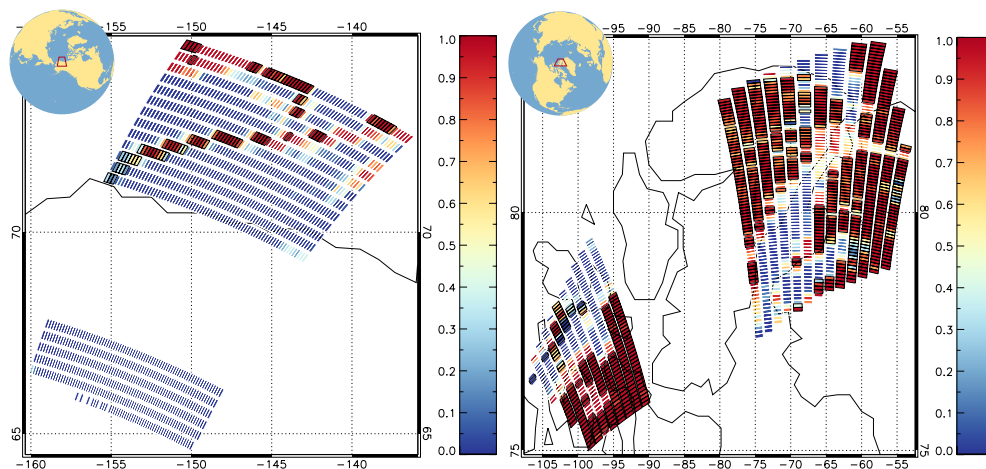


Fig. 5. Snow fraction, the number of cloud-free snow-covered scenes observations by AATSR divided by the total number of AATSR scenes inside each collocated SCIAMACHY PMD scene, as indicated by the colorbar on the right. Each footprint indicated by SPICL as cloud-free snow covered scene has been outlined in black. Top 6 May 2004, bottom 5 May 2009.

[Title Page](#)
[Abstract](#)
[Introduction](#)
[Conclusions](#)
[References](#)
[Tables](#)
[Figures](#)
[⏪](#)
[⏩](#)
[◀](#)
[▶](#)
[Back](#)
[Close](#)
[Full Screen / Esc](#)
[Printer-friendly Version](#)
[Interactive Discussion](#)