

**GRAS RS data
validation**

F. Zus et al.

This discussion paper is/has been under review for the journal Atmospheric Measurement Techniques (AMT). Please refer to the corresponding final paper in AMT if available.

Validation of refractivity profiles derived from GRAS raw-sampling data

F. Zus¹, G. Beyerle¹, S. Heise¹, T. Schmidt¹, J. Wickert¹, and C. Marquardt²

¹Helmholtz Centre Potsdam, GFZ German Research Centre for Geoscience Potsdam, Potsdam, Germany

²EUMETSAT, Darmstadt, Germany

Received: 25 February 2011 – Accepted: 12 March 2011 – Published: 16 March 2011

Correspondence to: F. Zus (zusflo@gfz-potsdam.de)

Published by Copernicus Publications on behalf of the European Geosciences Union.

Title Page

Abstract

Introduction

Conclusions

References

Tables

Figures

◀

▶

◀

▶

Back

Close

Full Screen / Esc

Printer-friendly Version

Interactive Discussion



Abstract

Results from GRAS (GNSS Receiver for Atmospheric Sounding) RO (Radio Occultation) data recorded in RS (Raw Sampling) mode processed at the GFZ (German Research Centre for Geoscience) Potsdam are presented. The experimental processing software POCS-X includes FSI (Full Spectrum Inversion) in order to cope with multipath regions and enables in connection with RS data to retrieve atmospheric refractivity profiles down to the Earth's surface. Radio occultation events observed between 30 September and 30 October 2007 are processed and the retrievals are validated against co-located ECMWF (European Centre for Medium-Range Weather Forecasts) profiles. The intercomparison indicates good quality of the retrieved profiles. In the altitude range 8 to 25 km the standard deviation is below 1%. The mean deviation in this altitude range tends to be negative. At 30 km the negative bias reaches about -0.4% . Below 8 km the standard deviation increases, reaching 2.5% at 2 km. Below 2 km the mean deviation tends to be negative, reaching -1.9% close to the ground. The negative bias mainly stems from the tropical lower troposphere; there, the negative bias reaches -3% . The tropospheric penetration depth obtained from RS data shows a vast improvement compared to the tropospheric penetration depth typically obtained from CL (Closed Loop) data; 50% of all retrieved profiles reach 720 m.

1 Introduction

In a RO (Radio Occultation) event, the radio signal transmitted by a GPS (Global Positioning System) satellite, traverses the atmosphere before it is recorded by a receiver aboard a LEO (Low Earth Orbiting) satellite. Refraction in the atmosphere changes the phase and amplitude of the signal. Bending angles are derived and inverted to atmospheric refractivity under the assumption of spherical symmetry. This unique remote sensing method of bending angle/refractivity profiles provides valuable input for

GRAS RS data validation

F. Zus et al.

Title Page

Abstract

Introduction

Conclusions

References

Tables

Figures

◀

▶

◀

▶

Back

Close

Full Screen / Esc

Printer-friendly Version

Interactive Discussion



numerical weather prediction (Kursinski et al., 1997; Rocken et al., 1997, Wickert et al., 2001, 2009; Anthes et al., 2008; von Engeln et al., 2009; Beyerle et al., 2010).

In the upper troposphere and lower stratosphere good agreement between RO retrievals and meteorological analyses is found. Obtaining accurate retrievals in the lower troposphere (at altitudes below 8 km) has proven to be more difficult due to the complicated structure of refractivity there. Advanced receiver tracking methods and the application of sophisticated retrieval algorithms are required. Retrieval algorithms such as the CT (Canonical Transform) (Gorbunov, 2002) or the FSI (Full Spectrum Inversion) (Jensen et al., 2003) allow to determine bending angles in multipath regions. Errors introduced by CL (Closed Loop) tracking are reduced by OL (Open Loop) tracking (Sokolovskiy, 2001). Open Loop tracking is routinely used on the COSMIC (Constellation Observing System for Meteorology, Ionosphere and Climate) mission and the TerraSAR-X mission, and proves to increase the data yield and quality of RO soundings in the lower troposphere (Anthes et al., 2008; Beyerle et al., 2010). Besides improving the ability to probe deeper into the lower troposphere, OL tracking also enables recording rising occultations, thus the number of occultation events from the same RO-instrument increases considerably.

The RO-instrument GRAS (GNSS Receiver for Atmospheric Sounding) on-board of EUMETSAT's (European Organisation for the Exploitation of Meteorological Satellites) MetOp satellite has been designed for observing setting and rising occultations from the GPS satellite constellation. A dedicated ESA (European Space Agency) funded study was set up to investigate the potential of RO data recorded in RS (Raw Sampling) mode (equivalent to OL tracking). The study exploited a set of in-orbit GRAS data to characterize the performance of the instrument for atmospheric sounding (Bonedal et al., 2010). A key objective was the analysis of measurement conditions requiring the application of OL tracking and the retrieval of atmospheric profiles. Starting from the same data set, provided by EUMETSAT, participants of the study were asked to retrieve bending angle/refractivity profiles. Among different institutions, i.e. RUAG Space AB, EUMETSAT, DMI (Danish Meteorological Institute), and the University of Graz, the

**GRAS RS data
validation**

F. Zus et al.

Title Page

Abstract

Introduction

Conclusions

References

Tables

Figures

◀

▶

◀

▶

Back

Close

Full Screen / Esc

Printer-friendly Version

Interactive Discussion



**GRAS RS data
validation**

F. Zus et al.

Title Page

Abstract

Introduction

Conclusions

References

Tables

Figures

◀

▶

◀

▶

Back

Close

Full Screen / Esc

Printer-friendly Version

Interactive Discussion



GFZ (German Research Centre for Geoscience) Potsdam participated in this study. A profile-to-profile intercomparison with other teams in the RS study is ongoing; first results were presented at the OPAC (Occultations for Probing Atmosphere and Climate) workshop in Graz, Austria, 2010 (Marquardt et al., 2010). In this paper we provide a brief description of GFZs in-house experimental processing software package (POCS-X) and compare retrieved refractivity profiles to co-located ECMWF (European Centre for Medium-Range Weather Forecasts) profiles.

This paper is structured as follows. In Sect. 2 we briefly describe the construction of the phase and amplitude from GRAS measurements and the inversion procedure. In Sect. 3 refractivity profiles are compared to ECMWF analyses. Section 4 summarizes the main results.

2 Processing of GRAS RS data

In this section we provide a brief description of processing steps leading from RO measurements to refractivity profiles. For further details the reader is referred to e.g. Hajj et al. (2002); Wickert et al. (2004); Sokolovskiy et al. (2009); Beyerle et al. (2010). The processing consists of two stages. In the first processing step, hereinafter referred to as Level 1 processing, L1/L2 atmospheric excess phase paths are derived from the GRAS measurements. In the second processing step, hereinafter referred to as Level 2 processing, excess phase paths are inverted to refractivity profiles.

2.1 Level 1 processing

The GRAS instrument normally tracks the L1 coarse acquisition code (C/A) and the L1/L2 P(Y)-code using a Phase-Locked-Loop (PLL). In this tracking mode (CL mode), GRAS produces phase and SNR (Signal to Noise Ratio) measurements of the occulting signal at a rate of 50 Hz. The receiver either tracks both the L1 and L2 signals or, at low altitudes (<5–10 km), the L1 signal is tracked in RS mode parallel to the CL mode.

In RS mode, GRAS produces measurements of the occulting signal at a rate of 1 kHz (Bonnedal et al., 2010).

The GRAS instrument outputs NCO (Numerically-Controlled Oscillator) phase samples ϕ_n^{nco} along with in-phase and quadrature-phase correlation sum samples $\hat{I}_n = I_n/D_n$ and $\hat{Q}_n = Q_n/D_n$ respectively. Here, the subscript n denotes sample number, I_n and Q_n denote the demodulated in-phase and quadrature-phase correlation sum samples and $D_n = \pm 1$ denote the navigation data bits. The total phase sample ϕ_n is reconstructed according to

$$\phi_n = \phi_n^{nco} + \delta \phi_n \quad (1)$$

The residual phase sample $\delta \phi_n$ is determined through application of the four-quadrant inverse tangent to demodulated in- and quadrature-phase correlation sum samples

$$\delta \phi_n = \text{atan2}(Q_n, I_n) + c_n \quad (2)$$

The additional term c_n unwraps the residual phase (Beyerle et al., 2006)

$$c_n = \begin{cases} c_{n-1} + 2\pi : \text{atan2}(Q_n, I_n) - \text{atan2}(Q_{n-1}, I_{n-1}) < -\pi \\ c_{n-1} - 2\pi : \text{atan2}(Q_n, I_n) - \text{atan2}(Q_{n-1}, I_{n-1}) > +\pi \\ c_{n-1} : \text{otherwise} \end{cases} \quad (3)$$

with $c_1 = 0$. The residual phase extraction requires demodulated in- and quadrature-phase samples. Thus, knowledge of the navigation data bits is presupposed. The GFZ established a network of ground-based GPS receivers for that purpose (Beyerle et al., 2009). Navigation data bits collected by GFZ's ground station network, hereinafter referred to as external navigation data bits, are used whenever available. During the time period considered in this study (September/October in 2007) GFZ's ground station network provided navigation data bits with a global coverage of about 75% (currently the global coverage is about 99%). Internal navigation data bits, contained in EUMETSAT

GRAS RS data validation

F. Zus et al.

Title Page

Abstract

Introduction

Conclusions

References

Tables

Figures

◀

▶

◀

▶

Back

Close

Full Screen / Esc

Printer-friendly Version

Interactive Discussion



NetCDF file, are used if external navigation data bits are not available. The reconstruction of the phase following Eqs. (1)–(3) is done in the same way for CL and RS data.

The phase of the L1 signal is assembled from CL data recorded at 50 Hz and RS data recorded at 1 kHz. We select the longest contiguous CL and RS record. In this selection preference is given to RS data in the CL/RS overlap region. The phase of the assembled L1 signal is in general not continuous, i.e. the contiguous CL and RS records deviate by a (constant) phase-offset. This phase-offset is determined from data in the CL/RS overlap region. The resulting continuous L1 signal is downsampled to 50 Hz. The phase of the L2 signal is solely available from CL data recorded at 50 Hz. The phase data are corrected for relativistic effects and a zero differencing scheme is applied to retrieve L1/L2 atmospheric excess phase paths (Beyerle et al., 2005).

2.2 Level 2 processing

2.2.1 Standard retrieved bending angles

For the low-pass filtering of the L1/L2 excess phase paths and the simultaneous calculation of the L1/L2 excess phase path rates (derivative with respect to time) we apply a local polynomial regression of degree 3 using 71 samples (Savitzky-Golay smoothing filter). The bending angles α_1 and α_2 as functions of the impact parameters p_1 and p_2 are calculated from the L1 and L2 excess phase path rates (Kursinski et al., 1997). The bending angle related to the neutral atmosphere is determined through ionospheric calibration using the L1 and L2 bending angles (Hajj et al., 2002). After the low-pass filtering and the ionospheric calibration, statistical optimization is performed to damp bending angle noise (Healy, 2001):

$$\alpha = \alpha_b + \frac{\sigma_b^2}{(\sigma_b^2 + \sigma_o^2)} (\alpha_o - \alpha_b) \quad (4)$$

GRAS RS data validation

F. Zus et al.

Title Page

Abstract

Introduction

Conclusions

References

Tables

Figures

◀

▶

◀

▶

Back

Close

Full Screen / Esc

Printer-friendly Version

Interactive Discussion



**GRAS RS data
validation**

F. Zus et al.

[Title Page](#)[Abstract](#)[Introduction](#)[Conclusions](#)[References](#)[Tables](#)[Figures](#)[◀](#)[▶](#)[◀](#)[▶](#)[Back](#)[Close](#)[Full Screen / Esc](#)[Printer-friendly Version](#)[Interactive Discussion](#)

Here α_b and α_o denotes the background and observed bending angle and σ_b and σ_o denotes the background and observation error variance. The bending angle α represents the optimal estimate taking into account both the background and the observation errors. The background bending angle profile is computed from the co-located MSIS climatology (Hedin, 1991) refractivity profile using the inverse Abel transform (Fjeldbo et al., 1971). The background error variance is taken to be 20% of the background bending angle (Healy, 2001). The observation error variance is taken to be $1.2 \mu\text{rad}$ (von Engel et al., 2009).

2.2.2 FSI retrieved bending angles

The arrival times of different frequency components in the RO signal can be determined from the derivatives of the phases of the Fourier Transform of the entire complex RO signal (Jensen et al., 2003). This fact allows for the efficient computation of bending angle profiles within regions of multipath ray propagation. The implementation of the FSI closely follows Beyerle (2005). The excess phase path related to the neutral atmosphere is determined through ionospheric calibration using the L1 and L2 excess phase paths (Beyerle et al., 2004). Frequency variations caused by radial variations in the radius vectors of the GPS and the LEO satellite are accounted for Jensen et al. (2003). The RO signal in the time domain is not truncated and not subject to any filtering. While the bending angle as a function of the impact parameter follows from the derivative of the FSI phase, the valid impact parameter range is determined from the FSI amplitude. Specifically, the bending angle profiles are truncated at that impact parameter value where the FSI amplitude drops below 50% of the maximum value. The resolution of the FSI bending angle profile is reduced from 0.5 m to 50 m using a running mean.

2.2.3 Refractivity from RO data

Since multipath ray propagation is unlikely to occur at high altitudes, FSI retrieved bending angles are replaced by the corresponding standard retrieved bending angles above 12 km ray-height. Finally, the assembled bending angle profile is inverted to a refractivity profile using the Abel transform (Fjeldbo et al., 1971).

2.3 Refractivity from ECMWF analysis

ECMWF refractivity is computed from pressure, temperature and water vapor partial pressure (Bevis et al., 1994). Interpolation between grid points ($0.5^\circ \times 0.5^\circ$ horizontal resolution; 91 model levels in the vertical) and linear interpolation in time is performed between 6 h analyses fields. The discrepancy between the RO refractivity retrieval and the ECMWF refractivity is measured in terms of the fractional refractivity deviation.

2.4 Quality Control

Quality Control (QC) is applied at different stages of the processing. The early stage QC is applied at Level 1 and Level 2 and examines CL and RS data gaps, the CL/RS overlap, SNRs, and L1/L2 excess phase path ratios. Entire profiles are rejected if needed. The final stage QC compares the retrieved refractivity profiles to the ECMWF refractivity profiles. Profiles where the fractional refractivity deviation exceeds $\pm 10\%$ at any altitude between 5 km and 30 km are rejected.

3 Results and discussion

The focus is on data from September/October 2007 (Day Of Year – DOY: 273–300) provided by EUMETSAT. Out of 18 878 occultation events, 12 678 occultation events pass our QC. Note that there are significantly more (successfully retrieved) profiles

Title Page

Abstract

Introduction

Conclusions

References

Tables

Figures

◀

▶

◀

▶

Back

Close

Full Screen / Esc

Printer-friendly Version

Interactive Discussion



**GRAS RS data
validation**

F. Zus et al.

Title Page

Abstract

Introduction

Conclusions

References

Tables

Figures

◀

▶

◀

▶

Back

Close

Full Screen / Esc

Printer-friendly Version

Interactive Discussion



from setting occultation events than rising occultation events. In fact, 60% of all retrieved profiles stem from setting occultation events. This is due to the fact that in rising occultation events data gaps in the CL portion of the signal are frequent (about 33% of all rising occultation events are affected). Since our retrieval algorithm relies on the longest contiguous CL and RS records, and no attempt is made to fill data gaps in the CL portion of the signal, a large number of rising occultation events are rejected by our QC. Figure 1 shows the total number of occultations, the number of occultations after early stage QC and the number of occultations after final stage QC versus day of year.

3.1 Upper troposphere and lower stratosphere

The left panel of Fig. 2 shows the fractional refractivity deviation (measured in terms of the mean and the one-sigma standard deviation) versus altitude for all occultation events. The standard deviation between 8 km to 25 km is below 1%, confirming the high quality of the GPS RO data in the upper troposphere and lower stratosphere. The mean deviation in this altitude range tends to be negative, reaching -0.4% in between 30 and 35 km. This finding is consistent with recent validation studies of operational GRAS RO data (von Engel et al., 2009). The source of this bias is yet not well understood. The influence of the filter options, the low-pass filter applied to the phase and the statistical optimization applied to the bending angle, can not be ruled out. For example, the role of the low-pass filter was recently discussed in the context of retrievals derived from COSMIC RO data (see the COSMIC page <http://cosmic-io.cosmic.ucar.edu/cdaac/status.html>). Likewise, the statistical optimization can introduce a bias, i.e. the background bending angle can be biased. Since we assume that the observation error variance is constant, but the background error variance is a fraction of the background bending angle (see Eq. 4), the optimal bending angle automatically tends towards the observed bending angle at low ray-heights. Thus if the negative bias stems from the retrieval, the negative bias is inherent to the observed bending angle. Indeed, the negative bias does not only show up in the fractional deviation of refractivity but also in the fractional deviation of non-optimized bending angles (not

shown). However, it is important to note that retrievals derived by different processing centers (different filter options) for different RO missions, e.g. COSMIC and TerraSAR-X, show essentially the same negative bias (see the GRAS SAF monitoring page <http://www.grassaf.org/monitoring/>). Therefore, it can not be excluded that this negative bias stems from the ECMWF analysis. The right panel of Fig. 2 shows the fractional refractivity deviation versus altitude for rising and setting occultation events. While the mean and the standard deviation for rising and setting occultation events are similar above 8 km, below 8 km we observe distinct differences.

3.2 Lower troposphere

At first and for sake of clarity, Fig. 3 shows the fractional refractivity deviation versus altitude for all occultation events in the lower troposphere. The number of retrieved data points at a given altitude is attached to the figure. Below 8 km the standard deviation is increasing, reaching 2.5% at 2 km. Below 2 km the mean deviation tends to be negative, reaching -1.9% close to the ground. Though comparatively small, it is worth to mention that a small positive bias exists in between 2 and 6 km. The 50% altitude, defined as the altitude where the number of successfully retrieved data points is reduced to 50%, is 720 m; that is, compared to RO data recorded in CL mode, RO data recorded in RS mode strongly improves the ability to probe deep into the lower troposphere. Figure 4 shows the fractional refractivity deviation versus altitude for rising and setting occultation events in the lower troposphere. The number of retrieved data points at a given altitude is attached to the figure. The standard deviation differs by up to 1% at 2 km. The small positive bias between 2 and 6 km mentioned previously stems from setting occultations. For both, rising and setting occultations, a pronounced negative bias exists close to the ground. The differences in the fractional refractivity deviation are accompanied by a difference in the number of retrieved data points at a given altitude; compared to rising occultations, setting occultations extend deeper into the lower troposphere.

Title Page

Abstract

Introduction

Conclusions

References

Tables

Figures

◀

▶

◀

▶

Back

Close

Full Screen / Esc

Printer-friendly Version

Interactive Discussion



**GRAS RS data
validation**

F. Zus et al.

Title Page

Abstract

Introduction

Conclusions

References

Tables

Figures

◀

▶

◀

▶

Back

Close

Full Screen / Esc

Printer-friendly Version

Interactive Discussion



The meridional distribution of the fractional refractivity deviation at low altitudes shows that the negative and comparatively small positive bias mainly stem from the tropical lower troposphere. It is convenient to separate the occultation events into different latitude bands; the Southern Hemisphere, ranging from 30° N–90° N, the hemisphere ranging from 30° S–90° S and the tropics, ranging from 30° S–30° N. Figures 5–7 show the fractional refractivity deviation versus altitude for the Southern Hemisphere and the tropics. Again, the number of retrieved data points at a given altitude is attached to the figures. In the Northern and Southern Hemisphere biases are insignificant from 2 km to 10 km. Below 2 km the negative bias reaches –1% in the Northern Hemisphere and –2% in the Southern Hemisphere. The standard deviation is well below 2% for both hemispheres. The 50% altitude is about 830 m for Northern Hemisphere and about 630 m for the Southern Hemisphere. In the tropics a pronounced negative bias exists reaching –3% close to the ground. The standard deviation reaches 3.5% at 2 km. The 50% altitude is about 800 m. For the northern and Southern Hemisphere we do not find significant differences between rising and setting occultations in terms of the fractional refractivity deviation and the number of retrieved data points at a given altitude (not shown). Figure 8 shows the fractional refractivity deviation versus altitude for rising and setting occultation events along with the number of retrieved data points at a given altitude in the tropics. For rising occultations biases are insignificant from 2 km to 6 km. For setting occultations the bias tends to be positive, reaching 1% in between 2 and 3 km. The fraction of profiles probing the lower troposphere is significantly larger for setting occultations than for rising occultations.

A possible explanation of the enhanced negative bias below 2 km is the presence of critical refraction (Ao et al., 2003; Sokolovskiy, 2003); in particular in the tropics a frequently observed phenomenon. For example, Beyerle et al. (2006) estimated that in the tropics about 58% of all occultation events are affected by critical refraction. End-to-end simulations performed in the same study (including a receiver operating in OL mode implemented in software) suggest that critical refraction introduces a mean error of about –1%; the standard deviation is estimated to be about 2%. In addition

**GRAS RS data
validation**

F. Zus et al.

Title Page

Abstract

Introduction

Conclusions

References

Tables

Figures

◀

▶

◀

▶

Back

Close

Full Screen / Esc

Printer-friendly Version

Interactive Discussion



recent investigations by Sokolovskiy et al. (2010) point to the fact that the truncation and filtering of RO signals have a large influence on both, positive and negative, biases in the tropical lower troposphere. In particular, these investigations indicate that the truncation of RO signals (in the time domain) tends to enhance the negative bias and simultaneously reduce the positive bias (mean deviation between COSMIC and ECMWF). Figure 9 shows the frequency distribution (normed to unity) of the minimum SLTA (Straight Line Tangent point Altitude) for rising and setting occultation events in the tropics for October 2007, DOY: 280–286. The SLTA corresponds to the altitude of the tangent point above Earth's surface of the straight line between the GPS and LEO satellite. The mean minimum SLTA for setting occultations is -128 km. The mean minimum SLTA for rising occultations is -116 km. The question arises to what extent (if at all) this mean minimum SLTAs affects the negative and positive bias in the tropical lower troposphere. This question can only be answered by part: we can not decrease the minimum SLTA (we do not have data below the minimum SLTA) but only increase the minimum SLTA. Here we use some ad hoc procedure to truncate the RO signal: The noise level of the RO signal is estimated by averaging the amplitude over the last 3 s at the bottom of an occultation. The RO signal is used for inversion above lowest SLTA where the amplitude, smoothed with a 1 s window, exceeds the noise level by 50%. We restrict this procedure to RO signals with a minimum SLTA < -100 km. This procedure is similar to the one proposed by Sokolovskiy et al. (2009). Figure 10 shows the corresponding frequency distribution (normed to unity) of the minimum SLTA for rising and setting occultation events in the tropics. The mean minimum SLTA for setting occultations is now -112 km. The mean minimum SLTA for rising occultations is now -100 km. Figures 11 and 12 show the fractional refractivity deviation versus altitude for rising and setting occultations for both options: the case when the RO signal is/is not truncated. Again, the number of retrieved data points at a given altitude is attached to the figure. Indeed, we find that if the RO signal is truncated the negative bias is enhanced while the positive bias is decreased. The exact magnitude of biases in the lower tropical troposphere is at least to some extent affected by the length of the RO

signal used in the inversion procedure. Since we truncate the RO signal in the time domain, but we do not alter the truncation procedure in the impact parameter domain, the fraction of profiles probing the lower troposphere is reduced accordingly.

4 Conclusions

5 Preliminary validation efforts of refractivity profiles derived from GRAS RS data indicate good quality when compared to refractivity profiles derived from the ECMWF analysis. In the altitude range 8 to 25 km the standard deviation is below 1%. The mean deviation in this altitude range tends to be negative. At 30 km the negative bias reaches about -0.4%. This feature is also observed by other RO missions, e.g. COSMIC and
10 TerraSAR-X.

Raw sampling and the application of an advanced retrieval algorithm work as intended, allowing for refractivity profiles that extend deep into the lower troposphere. The 50% altitude is 720 m, a vast improvement compared to a 50% altitude of about 3 km typically obtained from CL data. In the tropical lower troposphere a pronounced
15 negative bias exists, reaching -3%. A small positive bias exists, reaching about 1% in between 2 and 3 km. The exact magnitudes of these biases depend at least to some extent on the length of the RO signal used in the inversion procedure, i.e. the truncation of RO signals tends to reduce the positive bias and enhances the negative bias.

20 Currently 68% of all occultations pass our QC, corresponding to about 450 profiles per day. An increased yield of the retrievals, i.e. a method to fill data gaps in the CL portion of the RO signal, is work in progress. The profile-to-profile intercomparison with other teams participating in the GRAS RS study is on-going. This intercomparison will be beneficial to study uncertainties in different processing software packages.

25 *Acknowledgements.* The European Centre of Medium-Range Weather Forecasts provided meteorological analysis fields. The RS study was funded by the European Space Agency under contract 21995/08/NL/EL.

Title Page

Abstract

Introduction

Conclusions

References

Tables

Figures

◀

▶

◀

▶

Back

Close

Full Screen / Esc

Printer-friendly Version

Interactive Discussion



References

- Anthes, R. A., Bernhardt, P. A., Chen, Y., Cucurull, L., Dymond, K. F., Ector, D., Healy, S. B., Ho, S.-P., Hunt, D. C., Kuo, Y.-H., Liu, H., Manning, K., McCormick, C., Meehan, T. K., Randel, W. J., Rocken, C., Schreiner, W. S., Sokolovskiy, S. V., Syndergaard, S., Thompson, D. C., Trenberth, K. E., Wee, T.-K., Yen, N. L., and Zeng, Z.: The COSMIC/FORMOSAT-3 Mission: Early Results, *B. Am. Meteorol. Soc.*, 83, 313–333, doi:10.1175/BAMS-89-3-313, 2008. 1827
- 5 Ao, C. O., Meehan, T. K., Hajj, G. A., Mannucci, A. J., and Beyerle, G.: Lower-troposphere refractivity bias in GPS occultation retrievals, *J. Geophys. Res.*, 108(D18), 4577, doi:10.1029/2002JD003216, 2003. 1835
- 10 Bevis, M., Businger, S., Chiswell, S., Herring, T. A., Anthes, R. A., Rocken, C., and Ware, R. H.: GPS meteorology: Mapping zenith wet delays onto precipitable water, *J. Appl. Meteorol.*, 33(3), 379–386, 1994. 1832
- Beyerle, G.: Simulating GPS radio occultation events, Scientific report, 05-09, Danish Meteorological Institute (DMI), 1-38, 2005. 1831
- 15 Beyerle, G., Wickert, J., Schmidt, T., and Reigber, C.: Atmospheric sounding by global navigation satellite system radio occultation: An analysis of the negative refractive bias using CHAMP observations, *J. Geophys. Res.*, 109, D01106, doi:10.1029/2003JD003922, 2004. 1831
- 20 Beyerle, G., Wickert, J., Schmidt, T., and Reigber, C.: GPS radio occultation with GRACE: Atmospheric profiling utilizing the zero difference technique, *Geophys. Res. Lett.*, 32, L13806, doi:10.1029/2005GL023109, 2005. 1830
- Beyerle, G., Schmidt, T., Wickert, J., Heise, S., Rothacher, M., König-Langlo, G., and Lauritsen, K. B.: Observations and simulations of receiver-induced refractivity biases in GPS radio occultation, *J. Geophys. Res.*, 111, doi:10.1029/2005JD006673, 2006. 1829, 1835
- 25 Beyerle, G., Ramatschi, M., Galas, R., Schmidt, T., Wickert, J., and Rothacher, M.: A data archive of GPS navigation messages, *GPS Solutions*, 13, 35–41, doi:10.1007/s10291-008-0095-y, 2009. 1829
- 30 Beyerle, G., Grunwaldt, L., Heise, S., Köhler, W., König, R., Michalak, G., Rothacher, M., Schmidt, T., Wickert, J., Tapley, B. D., and Giesinger, B.: First results from the GPS atmosphere sounding experiment TOR aboard the TerraSAR-X satellite, *Atmos. Chem. Phys. Discuss.*, 10, 28821–28857, doi:10.5194/acpd-10-28821-2010, 2010. 1827, 1828

GRAS RS data validation

F. Zus et al.

Title Page

Abstract

Introduction

Conclusions

References

Tables

Figures

◀

▶

◀

▶

Back

Close

Full Screen / Esc

Printer-friendly Version

Interactive Discussion



**GRAS RS data
validation**

F. Zus et al.

Title Page

Abstract

Introduction

Conclusions

References

Tables

Figures

◀

▶

◀

▶

Back

Close

Full Screen / Esc

Printer-friendly Version

Interactive Discussion



- Bonnedal, M., Christensen, J., Carlström, A., and Berg, A.: Metop-GRAS in-orbit instrument performance, *GPS Solutions*, 14, 109–120, doi:10.1007/s10291-009-0142-3, 2010. 1827, 1829
- 5 Fjeldbo, G., Kliore, A. J., and Eshleman, V. R.: The neutral atmosphere of Venus as studied with the Mariner V radio occultation experiments, *Astron. J.*, 76(2), 123–140, 1971. 1831, 1832
- Gorbunov, M. E.: Canonical transform method for processing radio occultation data in the lower troposphere, *Radio Sci.*, 37(5), 1076, doi:10.1029/2000RS002592, 2002. 1827
- 10 Hajj, G. A., Kursinski, E. R., Romans, L. J., Bertiger, W. I., and Leroy, S. S.: A technical description of atmospheric sounding by GPS occultation, *J. Atmos. Sol.-Terr. Phys.*, 64, 451–469, 2002. 1828, 1830
- Healy, S. B.: Smoothing radio occultation bending angles above 40 km, *Ann. Geophys.*, 19, 459–468, doi:10.5194/angeo-19-459-2001, 2001. 1830, 1831
- Hedin, A. E.: Extension of the MSIS thermosphere model into the middle and lower atmo-
15 sphere, *J. Geophys. Res.*, 96, 1159–1172, 1991. 1831
- Jensen, A. S., Lohmann, M., Benzon, H.-H., and Nielsen, A.: Full spectrum inversion of radio occultation signals, *Radio Sci.*, 38(3), 1040, doi:10.1029/2002RS002763, 2003. 1827, 1831
- Kursinski, E. R., Hajj, G. A., Schofield, J. T., Linfield, R. P., and Hardy, K. R.: Observing Earth's atmosphere with radio occultation measurements using Global Positioning System,
20 *J. Geophys. Res.*, 19, 23429–23465, doi:10.1029/97JD01569, 1997. 1827, 1830
- Marquardt, C. and the GRAS Raw Sampling study team: Overview on GRAS Raw Sampling and Data Quality Aspects, presentation at the OPAC-4 workshop, Graz, Austria, 2010. 1828
- Rocken, C., Anthes, R., Exner, M., Hunt, D., Sokolovskiy, S., Ware, R., Gorbunov, M., Schreiner, W., Feng, D., Herman, B., Kuo, Y.-H., and Zou, X.: Analysis and validation of GPS/MET data
25 in the neutral atmosphere, *J. Geophys. Res.*, 102, 29849–29866, doi:10.1029/97JD02400, 1997. 1827
- Sokolovskiy, S.: Tracking tropospheric radio occultation signals from low Earth orbit, *Radio Sci.*, 36(3), 483–498, 2001. 1827
- Sokolovskiy, S.: Effect of superrefraction on inversions of radio occultation signals in the lower troposphere, *Radio Sci.*, 38(3), 1058, doi:10.1029/2002RS002728, 2003. 1835
- 30 Sokolovskiy, S., Rocken, C., Schreiner, W., Hunt, D., and Johnson, J.: Postprocessing of L1 GPS radio occultation signals recorded in open-loop mode, *Radio Sci.*, 44, RS2002, doi:10.1029/2008RS003907, 2009. 1828, 1836

**GRAS RS data
validation**

F. Zus et al.

[Title Page](#)[Abstract](#)[Introduction](#)[Conclusions](#)[References](#)[Tables](#)[Figures](#)[◀](#)[▶](#)[◀](#)[▶](#)[Back](#)[Close](#)[Full Screen / Esc](#)[Printer-friendly Version](#)[Interactive Discussion](#)

- Sokolovskiy, S., Rocken, C., Schreiner, W., and Hunt, D.: On the uncertainty of radio occultation inversions in the lower troposphere, *J. Geophys. Res.*, 115, D22111, doi:10.1029/2010JD014058, 2010. 1836
- 5 von Engeln, A., Healy, S., Marquardt, C., Andres, Y., and Sancho, F.: Validation of operational GRAS radio occultation data, *Geophys. Res. Lett.*, 36, L17809, doi:10.1029/2009GL039968, 2009. 1827, 1831, 1833
- 10 Wickert, J., Reigber, C., Beyerle, G., König, R., Marquardt, C., Schmidt, T., Grunwaldt, L., Galas, R., Meehan, T., Melbourne, W. G., and Hocke, K.: Atmosphere sounding by GPS radio occultation: First Results from CHAMP, *Geophys. Res. Lett.*, 28, 17, 3263–3266, 2001. 1827
- Wickert, J., Schmidt, T., Beyerle, G., König, R., Reigber, C., and Jakowski, N.: The radio occultation experiment aboard CHAMP: Operational data processing and validation of atmospheric parameters, *J. Meteorol. Soc. Jpn.*, 82, 381–395, 2004. 1828
- 15 Wickert, J., Michalak, G., Schmidt, T., Beyerle, G., Cheng, C., Healy, S., Heise, S., Huang, C., Jakowski, N., Köhler, W., Mayer, C., Offiler, D., Ozawa, E., Pavelyev, A., Rothacher, M., Tapley, B., and Arras, C.: GPS radio occultation: Results from CHAMP, GRACE and FORMOSAT-3/COSMIC, *Terr. Atmos. Ocean. Sci.*, 20, 35–50, doi:10.3319/TAO.2007.12.26.01(F3C), 2009. 1827

GRAS RS data validation

F. Zus et al.

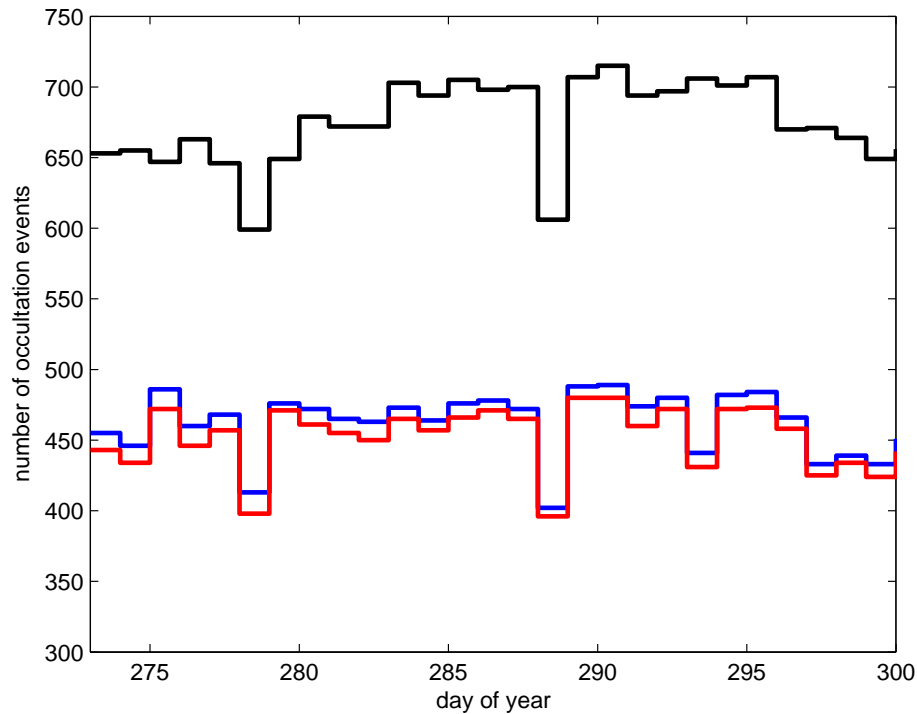


Fig. 1. Number of occultation events versus day of year. Total number of occultations events (black), number of profiles after early stage QC (blue) and number of profiles after final stage QC (red).

[Title Page](#)[Abstract](#)[Introduction](#)[Conclusions](#)[References](#)[Tables](#)[Figures](#)[◀](#)[▶](#)[◀](#)[▶](#)[Back](#)[Close](#)[Full Screen / Esc](#)[Printer-friendly Version](#)[Interactive Discussion](#)

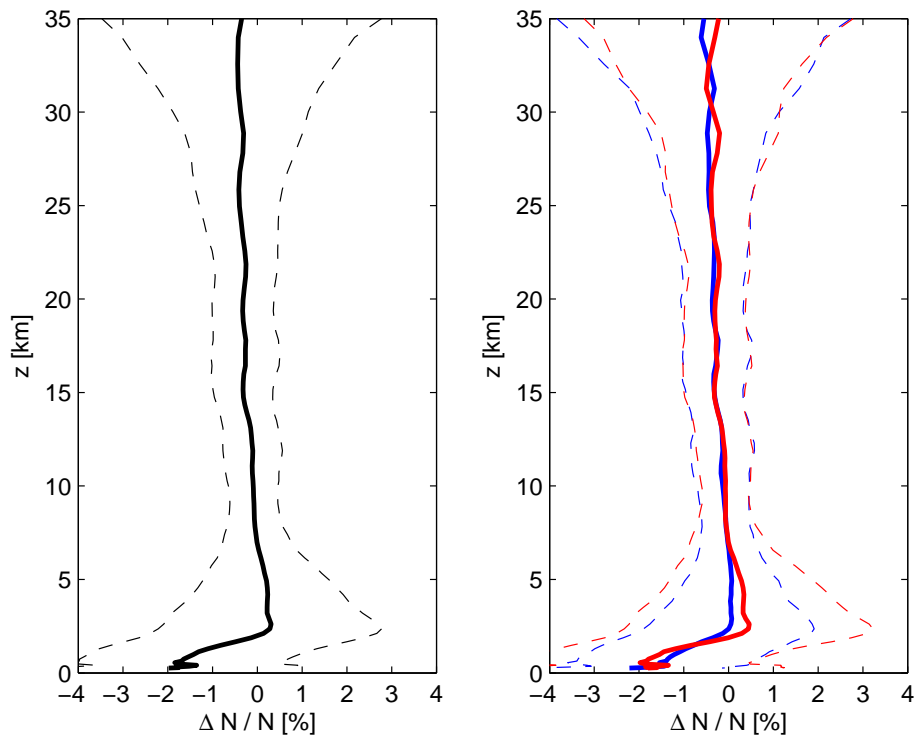


Fig. 2. Left panel: fractional refractivity deviation for all occultation events versus altitude. Right panel: fractional refractivity deviation for rising and setting occultation events versus altitude. The blue (red) line corresponds to rising (setting) occultations. The solid line indicates the mean and the dashed line indicates the one-sigma standard deviation.

GRAS RS data validation

F. Zus et al.

Title Page

Abstract Introduction

Conclusions References

Tables Figures

◀ ▶

◀ ▶

Back Close

Full Screen / Esc

Printer-friendly Version

Interactive Discussion



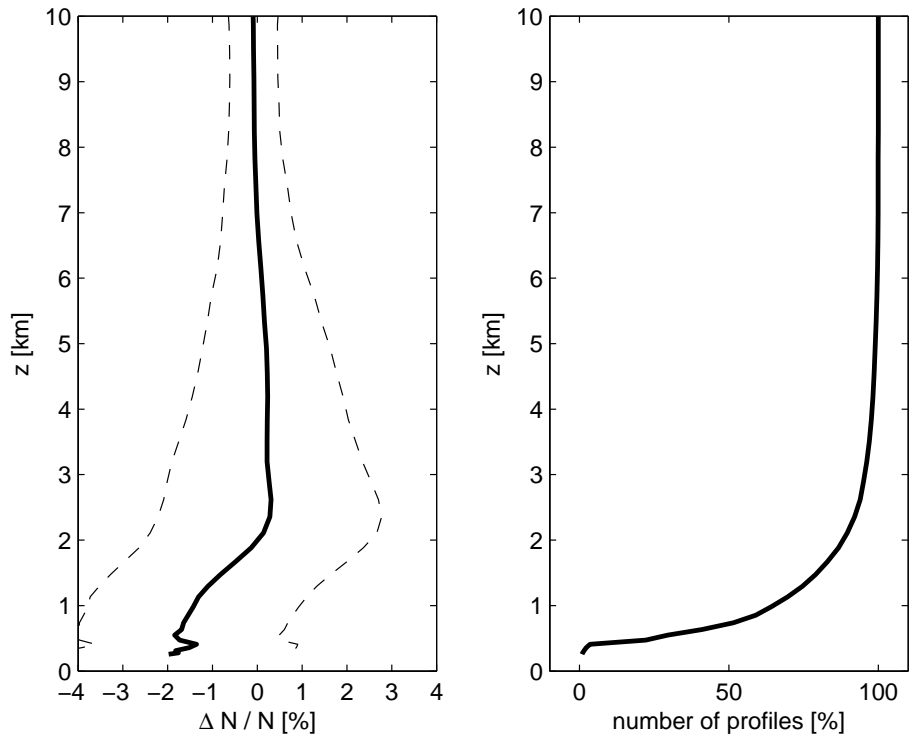


Fig. 3. Fractional refractivity deviation (left) and number of retrieved data points (right) versus altitude. The solid line indicates the mean, the dashed line indicates the one-sigma standard deviation.

GRAS RS data validation

F. Zus et al.

Title Page

Abstract Introduction

Conclusions References

Tables Figures

◀ ▶

◀ ▶

Back Close

Full Screen / Esc

Printer-friendly Version

Interactive Discussion



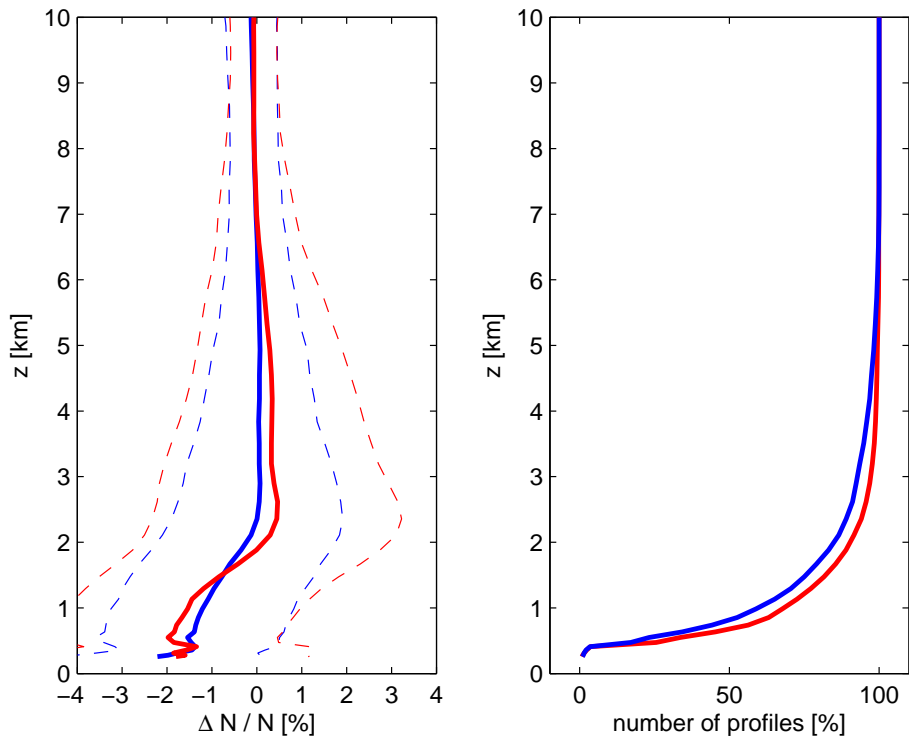


Fig. 4. Fractional refractivity deviation (left) and number of retrieved data points (right) versus altitude. The blue (red) line corresponds to rising (setting) occultations. The solid line indicates the mean, the dashed line indicates the one-sigma standard deviation.

GRAS RS data validation

F. Zus et al.

Title Page

Abstract Introduction

Conclusions References

Tables Figures

◀ ▶

◀ ▶

Back Close

Full Screen / Esc

Printer-friendly Version

Interactive Discussion



GRAS RS data
validation

F. Zus et al.

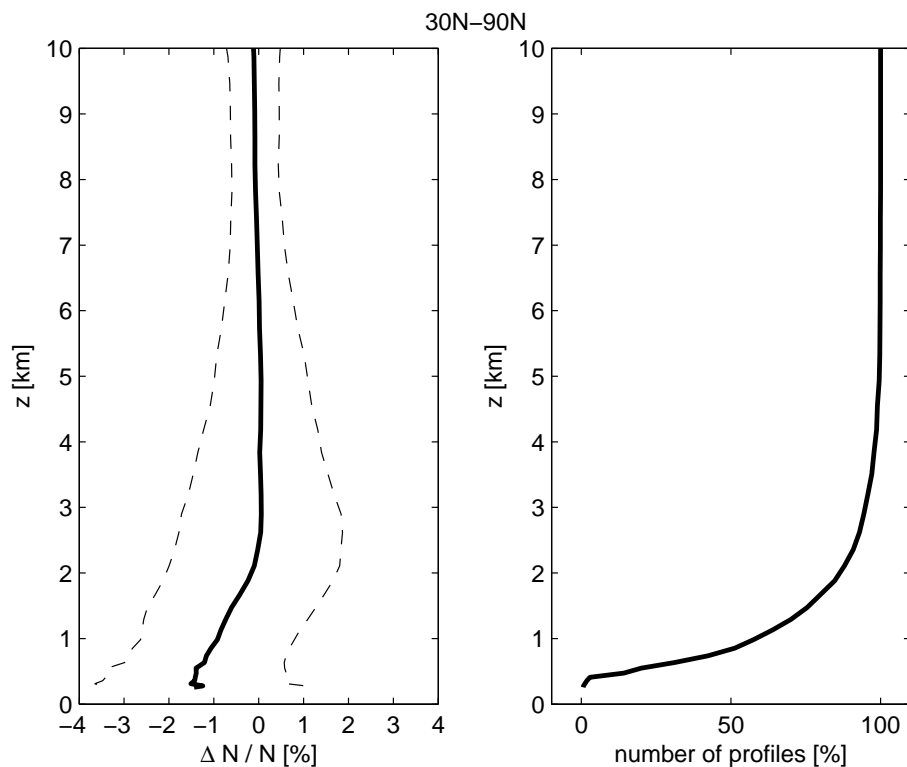


Fig. 5. Fractional refractivity deviation (left) and number of retrieved data points (right) versus altitude (Northern Hemisphere: 30°N–90°N). The solid line indicates the mean, the dashed line indicates the one-sigma standard deviation.

[Title Page](#)[Abstract](#)[Introduction](#)[Conclusions](#)[References](#)[Tables](#)[Figures](#)[◀](#)[▶](#)[◀](#)[▶](#)[Back](#)[Close](#)[Full Screen / Esc](#)[Printer-friendly Version](#)[Interactive Discussion](#)

GRAS RS data
validation

F. Zus et al.

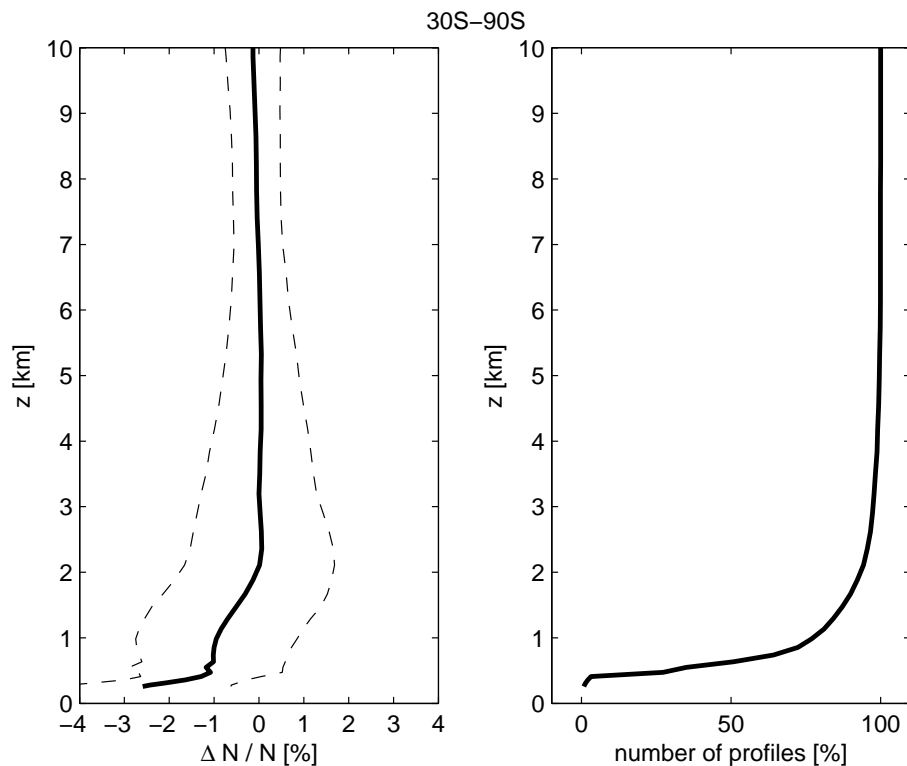


Fig. 6. Fractional refractivity deviation (left) and number of retrieved data points (right) versus altitude (Southern Hemisphere: 30° S–90° S). The solid line indicates the mean, the dashed line indicates the one-sigma standard deviation.

[Title Page](#)[Abstract](#)[Introduction](#)[Conclusions](#)[References](#)[Tables](#)[Figures](#)[◀](#)[▶](#)[◀](#)[▶](#)[Back](#)[Close](#)[Full Screen / Esc](#)[Printer-friendly Version](#)[Interactive Discussion](#)

GRAS RS data
validation

F. Zus et al.

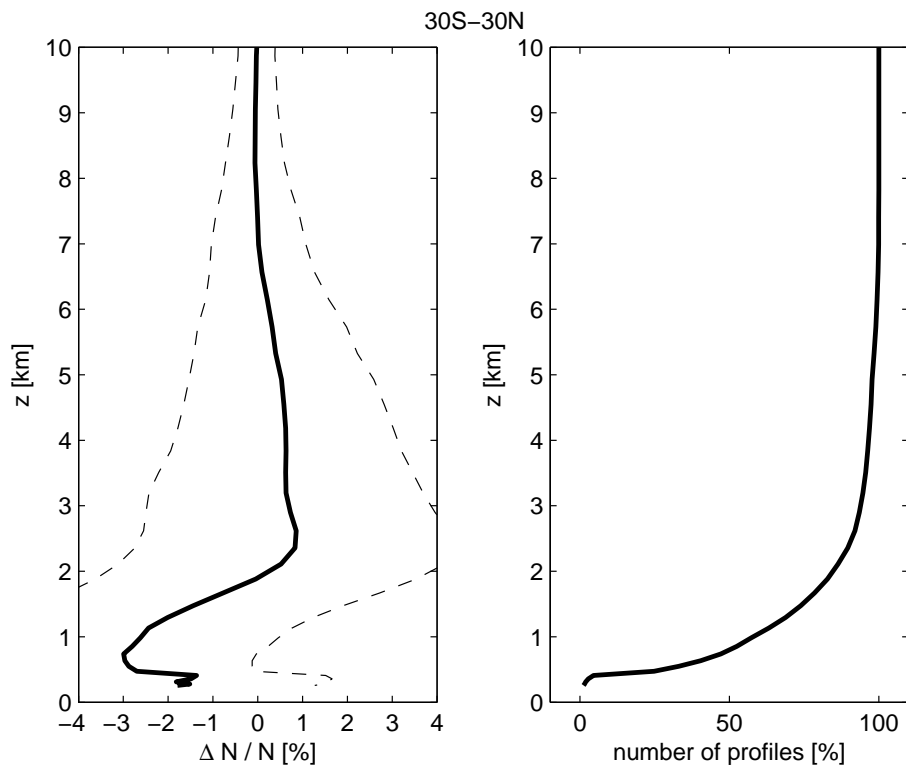


Fig. 7. Fractional refractivity deviation (left) and number of retrieved data points (right) versus altitude (tropics: 30° S–30° N). The solid line indicates the mean, the dashed line indicates the one-sigma standard deviation.

[Title Page](#)[Abstract](#)[Introduction](#)[Conclusions](#)[References](#)[Tables](#)[Figures](#)[◀](#)[▶](#)[◀](#)[▶](#)[Back](#)[Close](#)[Full Screen / Esc](#)[Printer-friendly Version](#)[Interactive Discussion](#)

GRAS RS data validation

F. Zus et al.

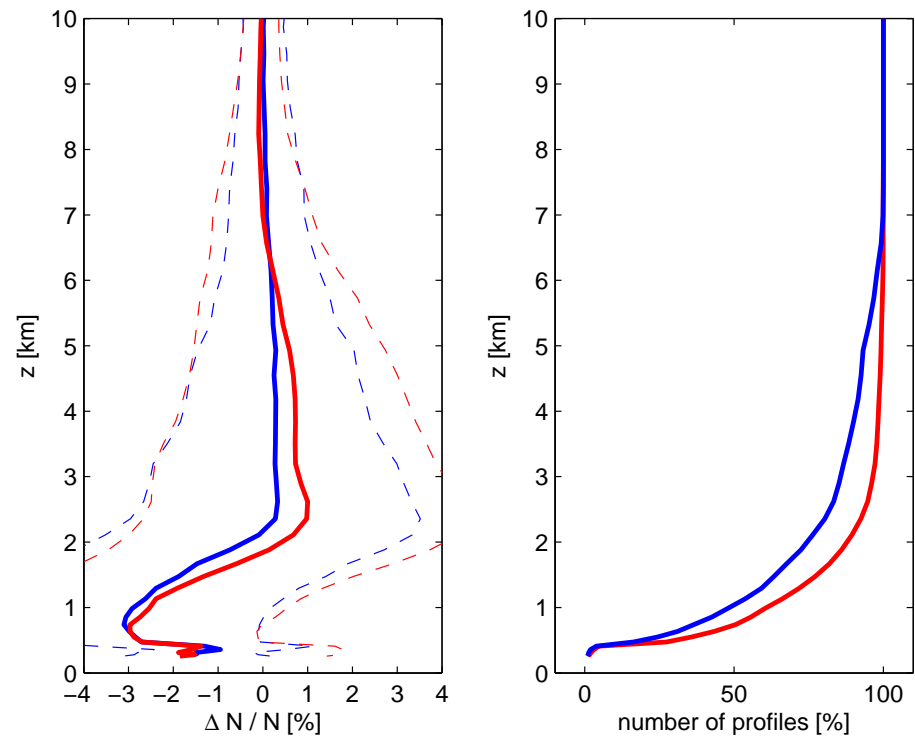


Fig. 8. Fractional refractivity deviation (left) and number of retrieved data points (right) versus altitude (tropics: 30° S–30° N). The blue (red) line corresponds to rising (setting) occultations. The solid line indicates the mean, the dashed line indicates the one-sigma standard deviation.

Title Page

Abstract	Introduction
Conclusions	References
Tables	Figures

◀
▶

◀
▶

Back Close

Full Screen / Esc

Printer-friendly Version

Interactive Discussion



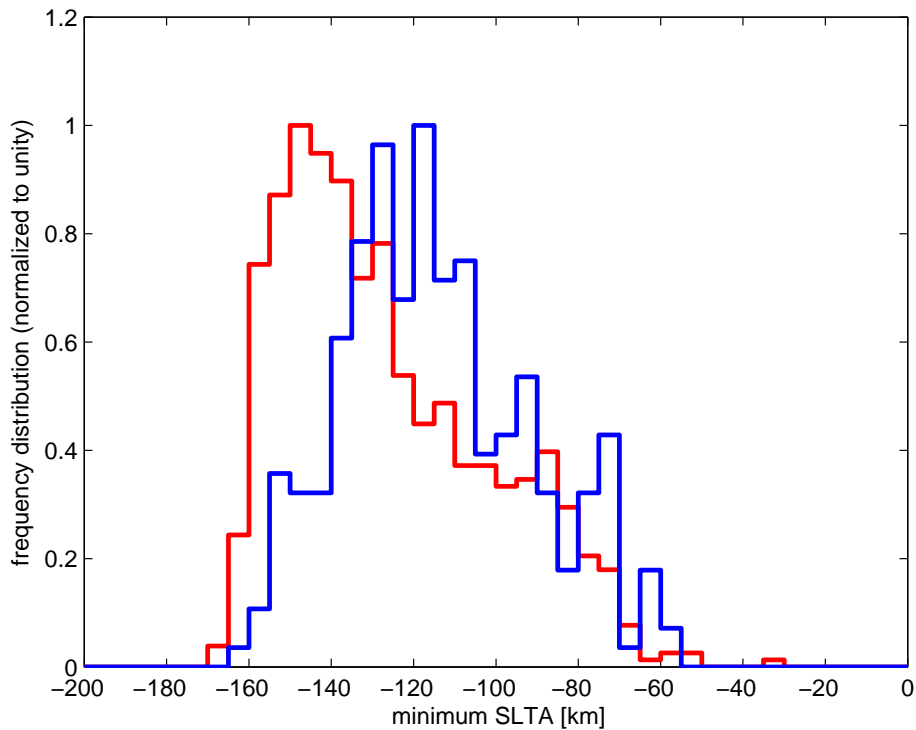


Fig. 9. Normalized frequency distribution of the minimum SLTA. The blue (red) line corresponds to rising (setting) occultations. The data is taken from October 2007, DOY: 280–286.

GRAS RS data validation

F. Zus et al.

Title Page

Abstract Introduction

Conclusions References

Tables Figures

◀ ▶

◀ ▶

Back Close

Full Screen / Esc

Printer-friendly Version

Interactive Discussion



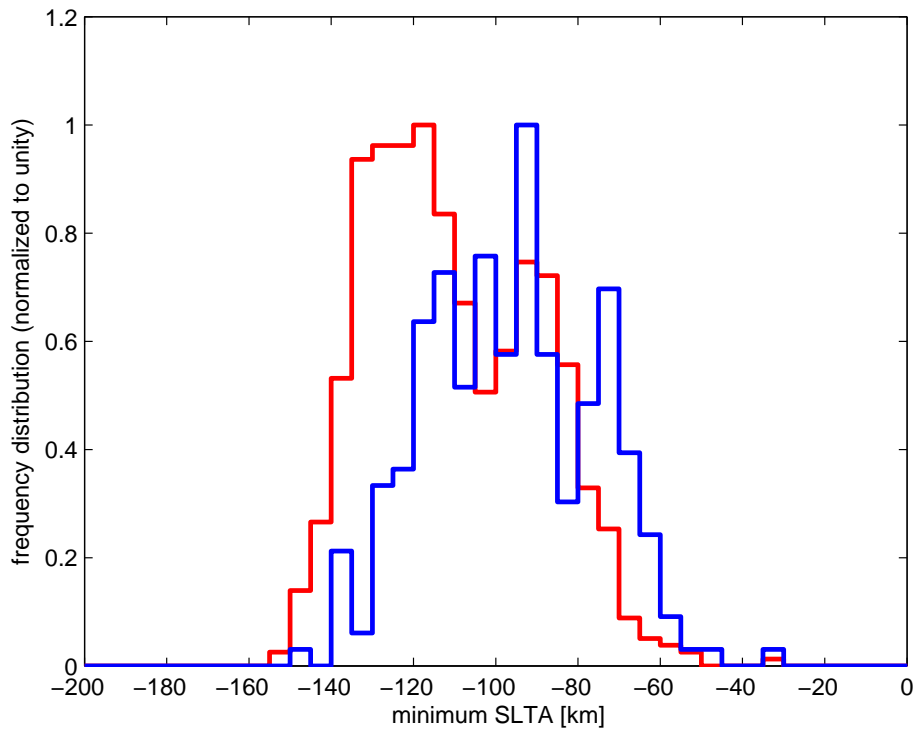


Fig. 10. Same as Fig. 9. The RO signal is truncated (for details refer to Sect. 3.2).

GRAS RS data validation

F. Zus et al.

Title Page

Abstract Introduction

Conclusions References

Tables Figures

◀ ▶

◀ ▶

Back Close

Full Screen / Esc

Printer-friendly Version

Interactive Discussion



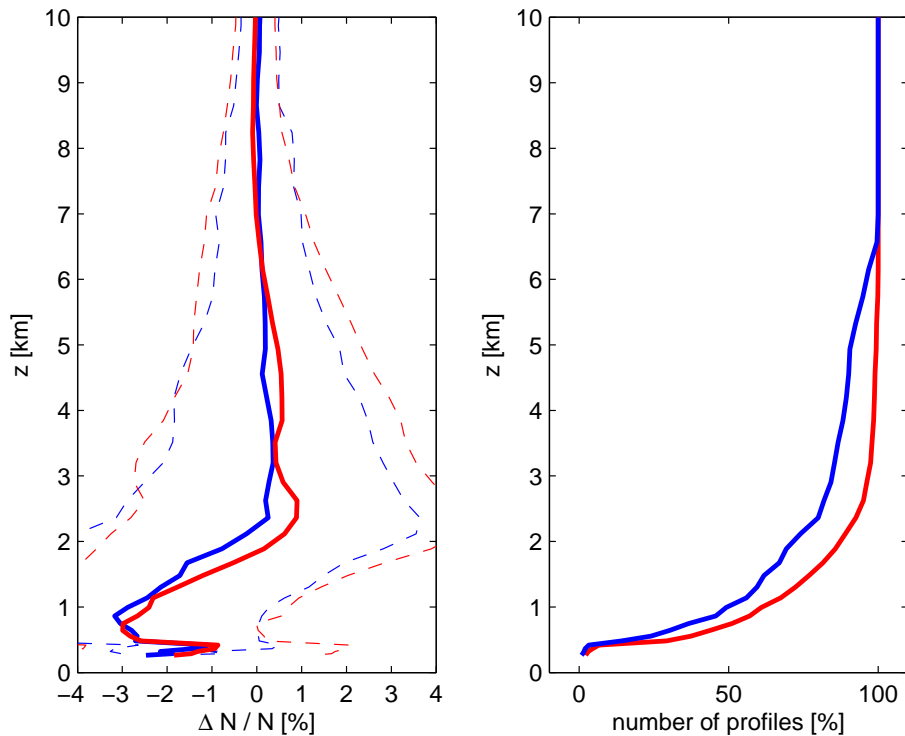


Fig. 11. Fractional refractivity deviation (left) and number of retrieved data points (right) versus altitude (tropics: 30° S–30° N). The blue (red) line corresponds to rising (setting) occultations. The solid line indicates the mean, the dashed line indicates the one-sigma standard deviation. The intercomparison is restricted to data from October 2007, DOY: 280–286. The RO signal is not truncated (standard processing option).

GRAS RS data validation

F. Zus et al.

Title Page

Abstract Introduction

Conclusions References

Tables Figures

◀ ▶

◀ ▶

Back Close

Full Screen / Esc

Printer-friendly Version

Interactive Discussion



GRAS RS data
validation

F. Zus et al.

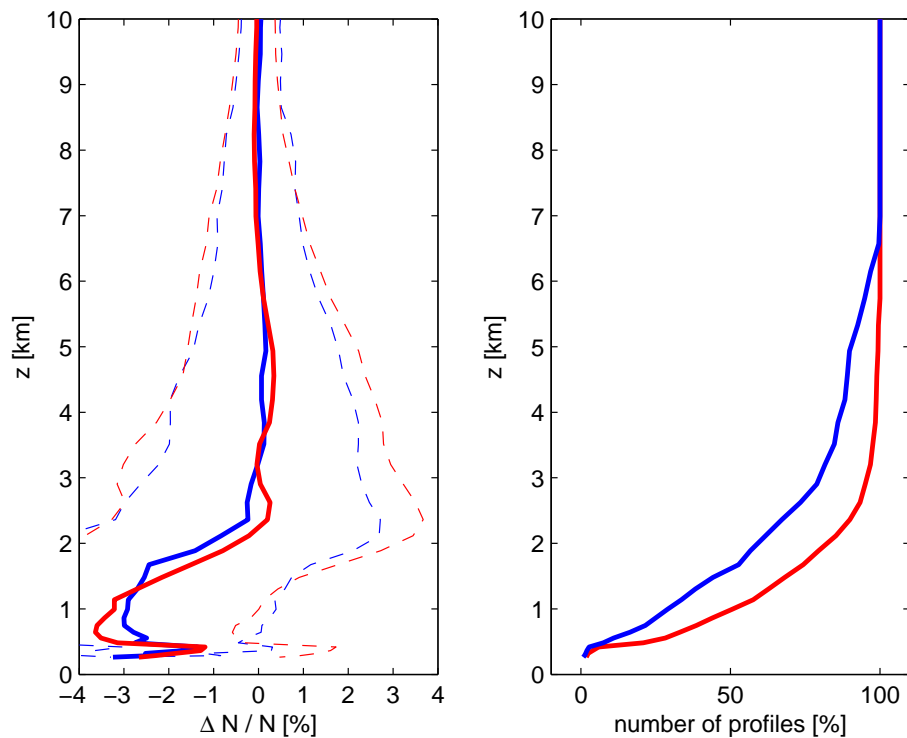


Fig. 12. Same as Fig. 11. The RO signal is truncated (for details refer to Sect. 3.2).

Title Page

Abstract

Introduction

Conclusions

References

Tables

Figures

◀

▶

◀

▶

Back

Close

Full Screen / Esc

Printer-friendly Version

Interactive Discussion

