

## ***Interactive comment on “Water isotopic ratios from a continuously melted ice core sample” by V. Gkinis et al.***

**V. Gkinis et al.**

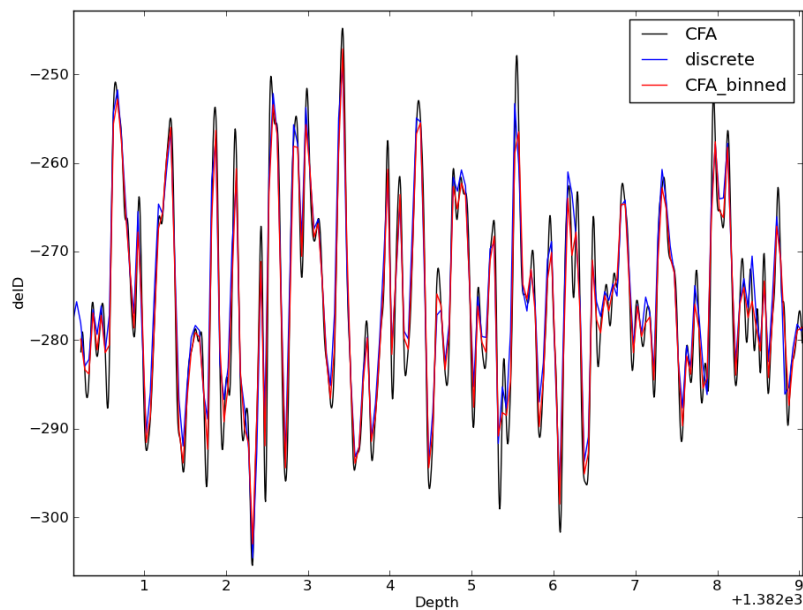
v.gkinis@nbi.ku.dk

Received and published: 3 November 2011

Figure 1

Interactive comment on Atmos. Meas. Tech. Discuss., 4, 4073, 2011.

C1932



**Fig. 1.** Comparison between CFA-binned and discrete data

C1933