

**Validation of six
years of SCIAMACHY
carbon monoxide
observations**

A. T. J. de Laat et al.

**Validation of six years of SCIAMACHY
carbon monoxide observations using
MOZAIC CO profile measurements**

A. T. J. de Laat^{1,2}, R. Dijkstra², H. Schrijver², P. Nédélec³, and I. Aben²

¹Royal Netherlands Meteorological Institute (KNMI), De Bilt, The Netherlands

²Netherlands Organisation for Space Research (SRON), Utrecht, The Netherlands

³Centre National de la Recherche Scientifique (CNRS), Université Paul Sabatier, Laboratoire d'aérodynamique, Toulouse, France

Received: 31 January 2012 – Accepted: 23 February 2012 – Published: 29 February 2012

Correspondence to: A. T. J. de Laat (laatdej@knmi.nl)

Published by Copernicus Publications on behalf of the European Geosciences Union.

Title Page

Abstract

Introduction

Conclusions

References

Tables

Figures

⏪

⏩

◀

▶

Back

Close

Full Screen / Esc

Printer-friendly Version

Interactive Discussion

Abstract

This paper presents a validation study of SCanning Imaging Absorption spectroMeter for Atmospheric CHartographyY (SCIAMACHY) carbon monoxide (CO) total column measurements from the Iterative Maximum Likelihood Method (IMLM) algorithm using vertically integrated profile aircraft measurements obtained within the MOZAIC project for the six year time period of 2003–2008.

Overall we find a good agreement between SCIAMACHY and airborne measurements for both mean values – also on a year-to-year basis – as well as seasonal variations. Several locations show large biases that are attributed to local effects like orography and proximity of large emission sources. Differences were detected for individual years: 2003, 2004 and 2006 have larger biases than 2005, 2007 and 2008, which appear to be related to SCIAMACHY instrumental issues but require more research. Results from this study are consistent with, and complementary to, findings from a previous validation study using ground-based measurements (de Laat et al., 2010). Despite the presence of some biases, this study provides additional confidence that SCIAMACHY, if individual measurements are of sufficient quality – good signal-to-noise – can be used to determine the spatial distribution and seasonal cycles of CO total columns.

1 Introduction

The SCIAMACHY instrument (SCanning Imaging Absorption spectroMeter for Atmospheric CHartographyY; launched March 2002) onboard of the ENVISAT satellite (Bovensmann et al., 1999) has been proving carbon monoxide (CO) measurements based on reflected sunlight measurements in the short-wave infrared around 2.3 μm (Gloudemans et al., 2008) from 2003 onwards. As of this moment, from the perspective of instrument characteristics six years of reliable data is available (2003–2008).

AMTD

5, 1985–2010, 2012

Validation of six years of SCIAMACHY carbon monoxide observations

A. T. J. de Laat et al.

Title Page

Abstract

Introduction

Conclusions

References

Tables

Figures

◀

▶

◀

▶

Back

Close

Full Screen / Esc

Printer-friendly Version

Interactive Discussion

Validation of six years of SCIAMACHY carbon monoxide observationsA. T. J. de Laat et al.

[Title Page](#)[Abstract](#)[Introduction](#)[Conclusions](#)[References](#)[Tables](#)[Figures](#)[⏪](#)[⏩](#)[◀](#)[▶](#)[Back](#)[Close](#)[Full Screen / Esc](#)[Printer-friendly Version](#)[Interactive Discussion](#)

De Laat et al. (2010) presented an extensive validation of SCIAMACHY CO total column measurements from the Iterative Maximum Likelihood Method (IMLM) retrieval algorithm – developed at the Netherlands Institute for Space Research (SRON) (Gloude-
mans et al., 2006, 2008, 2009). The validation was done by comparing the SCIAMACHY measurements with ground-based spectrometer (GBS) observations for the five year period 2003–2007.

In summary, de Laat et al. (2010) found that overall there was a good agreement between SCIAMACHY and GBS observations for both mean values as well as seasonal variations. Validation results were robust with regard to the choices of the instrument-noise error filter, sampling area, and time averaging required for the validation of SCIAMACHY CO total column measurements.

However, de Laat et al. (2010) also noted that validation was hampered by local emissions, station elevation effects and the large instrument-noise errors of individual SCIAMACHY measurements. Furthermore, it was noted that the spatial coverage of the GBS observations available for the validation of the 2003–2007 SCIAMACHY CO columns is sub-optimal for global validation purposes.

To further investigate the quality of SCIAMACHY IMLM CO we present a brief validation study using Measurements of OZone, water vapour, carbon monoxide and nitrogen oxides by in-service Airbus aircraft (MOZAIC) (Marenco et al., 1998). MOZAIC provides CO vertical profiles at ascends and descends around airports that can be converted to partial CO columns – as the aircrafts do not observed beyond about 12 km altitude, and the missing partial column above 12 km can be quantified from model simulations to derive a total CO column that can be compared with the SCIAMACHY measurements. The MOZAIC measurements provide a different independent dataset to compare with, and measurements cover areas not sampled by the GBS network. The validation period considered in this paper is 2003–2008, so compared to de Laat et al. (2010) the year 2008 is now also included for which no previous validation study has been performed.

This paper is organized as follows. Section 2 describes the measurement data and transport model TM5, section three presents the results of the comparison between SCIAMACHY and MOZAIC measurements which are discussed in Sect. 4. Section 5 ends the paper with some conclusions.

2 Datasets

2.1 SCIAMACHY

For this study we use SCIAMACHY CO total columns retrieved with the IMLM algorithm version 7.4 in the short-wave infrared wavelength range between 2324.5–2337.9 nm (Gloudemans et al., 2008, 2009). This spectral region is sensitive to the whole column, with almost uniform sensitivity from 200 hPa down to the surface (Gloudemans et al., 2008). In this paper, we assume that the SCIAMACHY CO total column is the real total column. De Laat et al. (2010) estimated that the effects of the SCIAMACHY CO a priori and averaging kernel were of the order of only a few percent.

Single SCIAMACHY CO measurements have large instrument-noise errors – typically of the order of 10–100 % of the total CO column value (de Laat et al., 2007). Hence, obtaining valuable information about CO from SCIAMACHY requires averaging multiple measurements and weighing them with their corresponding instrument-noise errors. Several studies have shown that reducing the instrument-noise error by averaging multiple measurements yields useful information about CO (de Laat et al., 2006, 2007, 2010; Gloudemans et al., 2006, 2009). De Laat et al. (2007) estimated the SCIAMACHY CO precision is approximately 1×10^{17} molecules cm^{-2} .

We use SCIAMACHY CO observations over both land as well as ocean measurements over low altitude clouds between the surface and 800 hPa using the same selection criteria as in Gloudemans et al. (2009) and de Laat et al. (2010). This greatly improves spatio-temporal coverage as discussed in these papers. However, using measurements over low altitude clouds means that only the partial CO column above the

Validation of six years of SCIAMACHY carbon monoxide observations

A. T. J. de Laat et al.

Title Page

Abstract

Introduction

Conclusions

References

Tables

Figures

⏪

⏩

◀

▶

Back

Close

Full Screen / Esc

Printer-friendly Version

Interactive Discussion



cloud is observed. The missing below-cloud CO partial column is estimated from TM5 model results and added to the SCIAMACHY measurements where applicable. This contribution is quantified and summarized for all comparisons, see further Table 1.

2.2 MOZAIC

MOZAIC was initiated in 1993 by European scientists, aircraft manufacturers and airlines to better understand the natural variability of the chemical composition of the atmosphere and how it is changing under the influence of human activity, with particular interest in the effects of aircraft. MOZAIC consists of automatic and regular measurements of reactive gases by five long range passenger airliners. A large database of measurements (about 30 000 flights since 1994) allows studies of chemical and physical processes in the atmosphere, validations of global chemistry transport models and satellite retrievals. MOZAIC data provide detailed climatologies of trace gases at 9–12 km. MOZAIC data also provide frequent vertical profiles over a large number of airports. These vertical profile measurements of CO will be used to calculate CO total columns (see further Sect. 2.4). Evaluation of MOZAIC CO measurements indicates a precision of $\pm 5\%$, which is sufficiently accurate for validation purposes (Nedelec et al., 2003). For more information about the MOZAIC program see Marengo et al. (1998) or the website found at <http://mozaic.aero.obs-mip.fr>.

2.3 Global chemistry-transport model TM5

We use the TM5 chemistry-transport model for the years 2003 to 2008 to quantify various effects that are important for the comparison of SCIAMACHY and MOZAIC measurements. This model is an update from the TM4 model used in de Laat et al. (2007, 2010) and Gloudemans et al. (2009). A detailed description of the model can be found in Huijn^o \times 2^o longitude-latitude with 34 vertical levels. Meteorological ECMWF operational analysis input fields used in TM5 are pre-processed as described in Bregman et al. (2003). Biomass burning emissions are taken from the Global Fire

Validation of six years of SCIAMACHY carbon monoxide observations

A. T. J. de Laat et al.

Title Page

Abstract

Introduction

Conclusions

References

Tables

Figures

◀

▶

◀

▶

Back

Close

Full Screen / Esc

Printer-friendly Version

Interactive Discussion



Emissions Database, version 2 (GFEDv2) 8-day emission inventory (Van der Werf et al., 2006). The biomass burning emissions are distributed over different altitude ranges, depending on the latitude. The emission heights are similar to those described in Dentener et al. (2006), except the injection height in the tropics is increased to 2 km based on the evidence from recent satellite observations (e.g. Labonne et al., 2007). Anthropogenic emissions are based on the present-day anthropogenic emissions from the inventory from the RETRO project for the year 2000 (Schultz et al., 2007), while East-Asian anthropogenic emissions are replaced by the REAS inventory (Ohara et al., 2007). For biogenic emissions climatological values are used as derived from GEIA (Global Emissions Inventory Activity; Guenther et al., 1995).

Validation of TM5 simulated CO against various types of measurements indicates that the model produces realistic seasonal cycles, but tends to underestimate CO in the Northern Hemisphere by 10–20 % depending on season with larger differences during winter (Huijnen et al, 2010). This is consistent with findings of Elguindi et al. (2010) who report that the model tends to underestimate CO. Shindell et al. (2006) report that transport models in general tend to underestimate CO. These discrepancies have been attributed to various causes, including hydrocarbon oxidation, uncertainties in the seasonal cycle of anthropogenic emissions and biomass burning injection heights and vertical redistribution. Elguindi et al. (2010) also suggest that part of the discrepancy might also be related to the fact that model grid boxes are compared to point measurements, particularly near the surface. Given that the model results are only used for quantifying missing subcolumns – either for SCIAMACHY measurements over clouded ocean scenes or for the CO column above the maximum MOZAIC profile altitude – the Northern Hemisphere TM5 model bias can be considered to be only of secondary importance.

Validation of six years of SCIAMACHY carbon monoxide observations

A. T. J. de Laat et al.

[Title Page](#)[Abstract](#)[Introduction](#)[Conclusions](#)[References](#)[Tables](#)[Figures](#)[⏪](#)[⏩](#)[◀](#)[▶](#)[Back](#)[Close](#)[Full Screen / Esc](#)[Printer-friendly Version](#)[Interactive Discussion](#)

2.4 Post processing and selection criteria

For comparing SCIAMACHY and MOZAIC measurements we use the following procedure, which is based on the methodology presented in de Laat et al. (2010).

MOZAIC profiles must be converted to partial columns. In order to ensure that the MOZAIC profile measurements are representative for a significant part of the troposphere we only select profiles that start below 800 hPa and measure at least up to 300 hPa. The missing partial column above the highest altitude where MOZAIC measures is estimated from TM5 model results. For each MOZAIC CO profile the collocated model column above the maximum altitude of the MOZAIC profile is calculated, shown in Fig. 1. For more than 95 % (99 %) of the CO profiles this subcolumn contains less than 20 % (30 %) of the total column, with mean and median values of 9.4 and 8.0 %, respectively, for the modeled subcolumn as fraction of the total column. Assuming that TM5 model biases in upper atmospheric CO are not larger than 10 %, biases in the total columns for the combination of MOZAIC and TM5 data that can be attributed to biases in TM5 are not larger than 2–3 %.

Note that rather than adding the model estimate of the missing column to the MOZAIC partial column it is also possible to scale the MOZAIC partial column with the modeled ratio of the total column over the modeled partial column. However, an evaluation of results from both methods yielded very similar total column estimates, indicating that results are robust with regard to the choice of correcting for the “missing” part in the MOZAIC profiles.

The comparison between SCIAMACHY and MOZAIC is hampered by the limited number of true collocations because of the SCIAMACHY spatial resolution and cloud cover and by the large instrument errors of individual SCIAMACHY measurements. De Laat et al. (2010) introduced an averaging method in which for a given spatial area all SCIAMACHY measurements within a certain time interval were averaged. The length of the time interval was chosen such that instrument-noise error of the average SCIAMACHY CO columns was 1×10^{17} molecules cm^{-2} or smaller. The value of

Validation of six years of SCIAMACHY carbon monoxide observations

A. T. J. de Laat et al.

Title Page

Abstract

Introduction

Conclusions

References

Tables

Figures

⏪

⏩

◀

▶

Back

Close

Full Screen / Esc

Printer-friendly Version

Interactive Discussion



1×10^{17} molecules cm^{-2} was derived from synthetic tests with the retrieval algorithm for quantifying non-instrument-noise errors and systematic biases. MOZAIC measurements falling within this spatio-temporal “area” are simply averaged. Based on the results from de Laat et al. (2010) we start with comparing SCIAMACHY CO with MOZAIC within an $8^\circ \times 8^\circ$ grid.

Because MOZAIC flights are intermittent, the frequency of visits to airports by aircrafts that take part in MOZAIC varies considerably. Figure 2 provides a geographical overview of where $8^\circ \times 8^\circ$ grids in which MOZAIC data was sampled. Indicated are also the FTIR locations used in de Laat et al. (2010). Note that several FTIR stations fall outside of the area shown here: Ny Alesund (Spitsbergen), Kiruna (northern Sweden), Lauder (New Zealand) and Arrival Heights (Antarctica). Clearly the GBS and MOZAIC networks complement each other. Table 2 provides a list of most frequently visited airports within the grid boxes shown in Fig. 2.

Biases that might be introduced by the area averaging methodology and effects of different grid comparison areas will be discussed later in this paper.

3 Results

3.1 Time series

Figure 3a–c present the comparison of MOZAIC and SCIAMACHY CO total column time series for the $8^\circ \times 8^\circ$ grid boxes in Fig. 2.

In general there is a reasonable to good agreement between both. We will discuss all grid box comparison, grouped according to geographical region.

The eastern USA boxes [1, 2, 3] all show a good agreement. The seasonal cycle of location 1 (Los Angeles, San Francisco) is well reproduced by SCIAMACHY. Although there are fewer observations for region 3, IMLM still shows seasonal variations. Note that for in particular location 1 most SCIAMACHY observations are from above oceanic low clouds (Table 1), which are very persistent in this region.

Validation of six years of SCIAMACHY carbon monoxide observations

A. T. J. de Laat et al.

Title Page

Abstract

Introduction

Conclusions

References

Tables

Figures

⏪

⏩

◀

▶

Back

Close

Full Screen / Esc

Printer-friendly Version

Interactive Discussion



Validation of six years of SCIAMACHY carbon monoxide observations

A. T. J. de Laat et al.

Title Page

Abstract

Introduction

Conclusions

References

Tables

Figures

⏪

⏩

◀

▶

Back

Close

Full Screen / Esc

Printer-friendly Version

Interactive Discussion



For the central and eastern USA boxes [4–9] there is also a reasonable to good agreement. Seasonal cycles are reproduced. The comparison for locations 4, 5, 7 and 8 shows that during 2004 and 2006 SCIAMACHY is considerably lower than MOZAIC. This phenomenon was also reported in de Laat et al. (2010) for the comparison with the FTIR measurements, and might point to some unresolved SCIAMACHY calibration issues. Also note that the year 2008 – which was not covered in de Laat et al. (2010) looks as good as any other year, suggesting that SCIAMACHY data for 2008 is of similar quality as the other years.

Location 10 represents a tropical location (Caracas, Venezuela). Although SCIAMACHY measurements are comparable to MOZAIC measurements, this region shows not much seasonal variation in CO total columns, and the measurement sample is not very large. Also here SCIAMACHY appears to underestimate CO in 2006. Note that all SCIAMACHY measurements come from observations over low altitude ocean clouds (Table 1), as the surface reflectance of the densely vegetated surrounding land – and thereby the signal-to-noise of the SCIAMACHY measurements – is small.

Location 11 represents the region around Lagos, Nigeria. This is a region with a strong seasonal cycle and high CO concentrations during the winter months (Redelsperger et al., 2006; Hopkins et al., 2009). Although for some years no MOZAIC measurements were made, the MOZAIC measurements show consistently larger CO columns than the SCIAMACHY measurements. A possible explanation might be that local pollution – either anthropogenic or biomass burning – which is not represented by the SCIAMACHY averaging over the $8^\circ \times 8^\circ$ grid box – affects the MOZAIC measurements.

Location 12 (Windhoek, Namibia) is in the Southern Hemisphere in a region that is strongly affected by seasonal biomass burning. Furthermore, the high surface reflectance of this area ensures a good signal-to-noise ratio for the SCIAMACHY measurements and thus many comparisons. Clearly SCIAMACHY data show a very similar seasonal cycle and similar CO total columns, also in 2008. Overall, the agreement is very good.

Validation of six years of SCIAMACHY carbon monoxide observations

A. T. J. de Laat et al.

Title Page

Abstract Introduction

Conclusions References

Tables Figures

⏪ ⏩

◀ ▶

Back Close

Full Screen / Esc

Printer-friendly Version

Interactive Discussion



Locations 13–15 are all located over Europe, a region that was already covered by the comparison between SCIAMACHY and FTIR (de Laat et al., 2010). Similar to the FTIR results, there is a good agreement between SCIAMACHY and MOZAIC in terms of both the average total columns as well as the seasonal cycle, although especially for 2004 and 2006 there appears to be a bias in SCIAMACHY. The comparison for 2008 is similar to other years.

Locations 16–21 cover the Middle East region. Here, although there are fewer MOZAIC measurement, signal-to-noise of the SCIAMACHY measurements is as high as it can get due to the high reflectivity of the dry (semi) desert surface. Overall, there is a reasonable agreement between SCIAMACHY and MOZAIC, although the seasonal cycles in this region are not very large. Furthermore, for several grid boxes, CO total columns from MOZAIC are larger than SCIAMACHY. As with Lagos, Nigeria, this might be related to local pollution that is not represented by the SCIAMACHY averages.

Locations 22–24 are all over eastern China. Temporal coverage is limited, but concentrations for location 22 (~Hong Kong) and 23 (Shanghai) are similar, and the large variations in CO total columns from one measurement to the next are also observed with SCIAMACHY. For location 24 – Beijing – MOZAIC show much larger columns than SCIAMACHY. It is very likely that the particular geographical conditions of Beijing can explain these differences. On the one hand, Beijing borders a mountainous area which is much less densely populated and industrialized region, which is relevant given the $8^\circ \times 8^\circ$ grid box averaging of SCIAMACHY. On the other hand, the local geography enhances the buildup of pollution in the boundary layer around Beijing. Finally, the buildup of pollution and formation of a well known boundary layer haze over Beijing (Chan and Yao, 2008). In combination with dust storms from the interior of the continent (Eck et al., 2005) this may limit the sensitivity of the SCIAMACHY measurements to the polluted boundary layer, as SCIAMACHY observes CO from reflected solar radiation around 2.3 micron and thus depends on light passing through CO pollution (M. Krijger, SRON, personal communication, 2012).

Validation of six years of SCIAMACHY carbon monoxide observations

A. T. J. de Laat et al.

Title Page

Abstract

Introduction

Conclusions

References

Tables

Figures

⏪

⏩

◀

▶

Back

Close

Full Screen / Esc

Printer-friendly Version

Interactive Discussion



Locations 25 and 26 are located over India. For location 25 over central Indian SCIAMACHY and MOZAIC are comparable and show similar seasonal cycles and the year 2008 is similar to other years. For location 26 in Northern India SCIAMACHY is smaller than MOZAIC, which in part may be related to again local pollution not represented by the SCIAMACHY averaging over $8^\circ \times 8^\circ$ grid boxes.

Locations 27 and 28 in southeastern Asia – Bangkok – show limited temporal coverage. Summertime CO total columns are similar, but SCIAMACHY misses some enhanced CO during the winter 2005–2006, although for years without MOZAIC measurements the SCIAMACHY measurements clearly show similar wintertime enhancement, suggesting that maybe collocation issues like cloud contamination may have hampered SCIAMACHY observing the wintertime enhancement.

Finally, locations 29 and 30 over Japan show similar seasonal cycles. De Laat et al. (2010) showed that for two FTIR stations in northern Japan results were good, and this comparison confirms those findings.

3.2 Statistics

Figure 4a shows a scatter plot of the 2003–2008 average CO total columns for SCIAMACHY and MOZAIC comparisons presented in Fig. 3 and Table 1. The comparison shows a very good agreement between SCIAMACHY and MOZAIC, apart from three outliers who were already identified in Sect. 3.1 (Lagos, Teheran and Beijing). Disregarding these three locations by removing points for which the bias is larger than the arbitrary value of 1.0×10^{18} molecules cm^{-2} , we find a correlation of 0.92 for the comparison. However, there is a small CO total column bias between SCIAMACHY and MOZAIC of approximately 0.3×10^{18} molecules cm^{-2} ($\sim 15\%$).

Figure 4b shows the same comparison as in Fig. 4a but for all years separately. Similar to Fig. 4a, there is a good agreement between SCIAMACHY and MOZAIC if we disregard the three locations discussed above as well as location 6 (year 2008) and location 23 (year 2004). Disregarding these stations results in a correlation of 0.75.

Validation of six years of SCIAMACHY carbon monoxide observationsA. T. J. de Laat et al.

[Title Page](#)[Abstract](#)[Introduction](#)[Conclusions](#)[References](#)[Tables](#)[Figures](#)[⏪](#)[⏩](#)[◀](#)[▶](#)[Back](#)[Close](#)[Full Screen / Esc](#)[Printer-friendly Version](#)[Interactive Discussion](#)

Figure 4c shows the comparison for all individual years. Disregarding the outliers discussed above results in correlation coefficients between 0.54 and 0.93. Comparing year to year we note that the years 2003, 2004 and 2006 have relatively large biases ($0.3\text{--}0.5 \times 10^{18}$ molecules cm^{-2} ; $\sim 10\text{--}25\%$), which was already noted in the discussion of the time series. The years 2005, 2007 and 2008 have smaller biases ($0.1\text{--}0.2 \times 10^{18}$ molecules cm^{-2} ; $\sim 3\text{--}10\%$).

Note that the year 2008 – not evaluated in de Laat et al. (2010) – appears similar to the other years, although some locations with high CO total columns did not provide observations in 2008. However, removing stations with CO total columns larger than 2.5×10^{18} molecules cm^{-2} for the years 2003–2007 yielded lower correlations similar to the 2008 correlation ($R = 0.54\text{--}0.77$), indicating that also the correlation for 2008 could be considered similar to the other years.

4 Discussion

The results from the comparison of SCIAMACHY with MOZAIC data are fully consistent with what was reported in de Laat et al. (2010). Overall, there is a good agreement between the satellite and in situ measurements. There are locations for which both observational records diverge. These differences are attributed to local effects and multiple explanations have been proposed although this was not investigated in more detail.

The comparison for 2003, 2004 and 2006 show larger biases than for the other years, a finding also noted in de Laat et al. (2010). For the years 2003 and 2004 the most obvious explanation is the frequent “decontaminations” that took place. The SCIAMACHY channel 8 detectors are hampered by the buildup of a microscopic ice layer, which reduces signal-to-noise and increases scattering effects. During 2003 and 2004 the detector was frequently heated to evaporate the ice in the hope that the vapor would escape the spacecraft. After 2005, the frequent decontaminations were stopped

and after an initial buildup the ice layer would remain stable. Hence, decontaminations cannot explain the bias observed for 2006. Another possible explanation might be a change in the available detector pixels. SCIAMACHY channel 8 suffers from radiation damage, which results in a steady reduction in the number of functioning detector pixels. The pixels used for the IMLM retrieval algorithm have to be actively varied to take this effect into account. This leads – over time – to different sets of pixels being used for the retrieval which might lead to different retrieval results. However, it is unclear as to whether the varying pixel mask can explain why for 2007 and 2008 the bias is smaller.

5 Conclusions

The validation of SCIAMACHY CO total columns with integrated in situ CO profile measurements from the MOZAIC campaign shows a good to very good agreement. A few location show large biases, likely related to local effects. If SCIAMACHY measurements are of sufficient quality – good signal-to-noise – then seasonal cycles can easily be discerned. Results from this study are consistent with those presented in de Laat et al. (2010).

The comparison for individual years shows that the years 2003, 2004 and 2006 have larger biases than 2005, 2007 and 2008. For this study we extended the SCIAMACHY measurements with the year 2008. The validation with GBS measurements presented in de Laat et al. (2010) only covered the years 2003–2007, and from this study we conclude that for 2008 SCIAMACHY provides good quality CO total column measurements as well.

Finally, we conclude that the MOZAIC network provides additional and crucial information for the validation of SCIAMACHY CO total columns. The network nicely complements the GBS network with a certain overlap – in particular in Europe and Japan – but also provides measurements at locations not covered by the GBS network

Validation of six years of SCIAMACHY carbon monoxide observations

A. T. J. de Laat et al.

Title Page

Abstract

Introduction

Conclusions

References

Tables

Figures

⏪

⏩

◀

▶

Back

Close

Full Screen / Esc

Printer-friendly Version

Interactive Discussion



– Middle East, south and southeast Asia, western USA, South Africa. Note that the GBS network covers some areas not visited by MOZAIC – high latitudes, Australia and New Zealand. Hence, both networks are mutually complementary.

References

- 5 Bovensmann, H., Burrows, J. P., Buchwitz, M., Frerick, J., Noel, S., Rozanov, V. V., Chance, K. V., and Goede, A. H. P.: SCIAMACHY – Mission Objectives and Measurement Modes, *J. Atmos. Sci.*, 56, 127–150, 1999.
- Bregman, B., Segers, A., Krol, M., Meijer, E., and van Velthoven, P.: On the use of mass-conserving wind fields in chemistry-transport models, *Atmos. Chem. Phys.*, 3, 447–457, doi:10.5194/acp-3-447-2003, 2003.
- 10 Chan, C. K. and Yao, X.: Air pollution in mega cities in China, *Atmos. Environ.*, 42, 1–42, doi:10.1016/j.atmosenv.2007.09.003, 2008.
- de Laat, A. T. J., Gloudemans, A. M. S., Schrijver, H., van den Broek, M. M. P., Meirink, J. F., Aben, I., and Krol, M.: Quantitative analysis of SCIAMACHY carbon monoxide total column measurements, *Geophys. Res. Lett.*, 33, L07807, doi:10.1029/2005GL025530, 2006.
- 15 de Laat, A. T. J., Gloudemans, A. M. S., Aben, I., Krol, M., van der Werf, G., Meirink, J. F., and Schrijver, H.: SCIAMACHY Carbon Monoxide total columns: Statistical evaluation and comparison with CTM results, *J. Geophys. Res.*, 112, D12310, doi:10.1029/2006JD008256, 2007.
- 20 de Laat, A. T. J., Gloudemans, A. M. S., Schrijver, H., Aben, I., Nagahama, Y., Suzuki, K., Mahieu, E., Jones, N. B., Paton-Walsh, C., Deutscher, N. M., Griffith, D. W. T., De Mazière, M., Mittermeier, R. L., Fast, H., Notholt, J., Palm, M., Hawat, T., Blumenstock, T., Hase, F., Schneider, M., Rinsland, C., Dzhola, A. V., Grechko, E. I., Poberovskii, A. M., Makarova, M. V., Mellqvist, J., Strandberg, A., Sussmann, R., Borsdorff, T., and Rettinger, M.: Validation of five years (2003–2007) of SCIAMACHY CO total column measurements using ground-based spectrometer observations, *Atmos. Meas. Tech.*, 3, 1457–1471, doi:10.5194/amt-3-1457-2010, 2010.
- 25 Dentener, F., Kinne, S., Bond, T., Boucher, O., Cofala, J., Generoso, S., Ginoux, P., Gong, S., Hoelzemann, J. J., Ito, A., Marelli, L., Penner, J. E., Putaud, J.-P., Textor, C., Schulz, M., van der Werf, G. R., and Wilson, J.: Emissions of primary aerosol and precursor gases in
- 30

Validation of six years of SCIAMACHY carbon monoxide observations

A. T. J. de Laat et al.

Title Page

Abstract

Introduction

Conclusions

References

Tables

Figures

◀

▶

◀

▶

Back

Close

Full Screen / Esc

Printer-friendly Version

Interactive Discussion



Validation of six years of SCIAMACHY carbon monoxide observations

A. T. J. de Laat et al.

Title Page

Abstract

Introduction

Conclusions

References

Tables

Figures

⏪

⏩

◀

▶

Back

Close

Full Screen / Esc

Printer-friendly Version

Interactive Discussion



the years 2000 and 1750 prescribed data-sets for AeroCom, *Atmos. Chem. Phys.*, 6, 4321–4344, doi:10.5194/acp-6-4321-2006, 2006.

Eck, T. F., Holben, B. N., Dubovik, O., Smirnov, A., Goloub, P., Chen, H. B., Chatenet, B., Gomes, L., Zhang, X.-Y., Tsay, S.-C., Ji, Q., Gilles, D., and Slutské, I.: Columnar aerosol optical properties at AERONET sites in central eastern Asia and aerosol transport to the tropical mid-Pacific, *J. Geophys. Res.*, 110, D06202, doi:10.1029/2004JD005274, 2005.

Elguindi, N., Clark, H., Ordóñez, C., Thouret, V., Flemming, J., Stein, O., Huijnen, V., Moinat, P., Inness, A., Peuch, V.-H., Stohl, A., Turquety, S., Athier, G., Cammas, J.-P., and Schultz, M.: Current status of the ability of the GEMS/MACC models to reproduce the tropospheric CO vertical distribution as measured by MOZAIC, *Geosci. Model Dev.*, 3, 501–518, doi:10.5194/gmd-3-501-2010, 2010.

Gloudemans, A. M. S., Krol, M. C., Meirink, J. F., de Laat, A. T. J., van der Werf, G. R., Schrijver, H., van den Broek, M. M. P., and Aben, I.: Evidence for long-range transport of carbon monoxide in the Southern Hemisphere from SCIAMACHY observations, *Geophys. Res. Lett.*, 33, L16807, doi:2006GL026804, 2006.

Gloudemans, A. M. S., Schrijver, H., Hasekamp, O. P., and Aben, I.: Error analysis for CO and CH₄ total column retrievals from SCIAMACHY 2.3 μm spectra, *Atmos. Chem. Phys.*, 8, 3999–4017, doi:10.5194/acp-8-3999-2008, 2008.

Gloudemans, A. M. S., de Laat, A. T. J., Schrijver, H., Aben, I., Meirink, J. F., and van der Werf, G. R.: SCIAMACHY CO over land and oceans: 2003–2007 interannual variability, *Atmos. Chem. Phys.*, 9, 3799–3813, doi:10.5194/acp-9-3799-2009, 2009.

Guenther, A., Hewitt, C. N., Erickson, D., Fall, R., Geron, C., Graedel, T., Harley, P., Klinger, L., Lerdau, M., McKay, W. A., Pierce, T., Scholes, B., Steinbrecher, R., Tallamraju, R., Taylor, J., and Zimmerman, P.: A global model of natural volatile organic compound emissions, *J. Geophys. Res.*, 100, 8873–8892, 1995.

Hopkins, J. R., Evans, M. J., Lee, J. D., Lewis, A. C., H Marsham, J., McQuaid, J. B., Parker, D. J., Stewart, D. J., Reeves, C. E., and Purvis, R. M.: Direct estimates of emissions from the megacity of Lagos, *Atmos. Chem. Phys.*, 9, 8471–8477, doi:10.5194/acp-9-8471-2009, 2009.

Huijnen, V., Williams, J., van Weele, M., van Noije, T., Krol, M., Dentener, F., Segers, A., Houweling, S., Peters, W., de Laat, J., Boersma, F., Bergamaschi, P., van Velthoven, P., Le Sager, P., Eskes, H., Alkemade, F., Scheele, R., Nédélec, P., and Pätz, H.-W.: The global chemistry transport model TM5: description and evaluation of the tropospheric chemistry

Validation of six years of SCIAMACHY carbon monoxide observations

A. T. J. de Laat et al.

[Title Page](#)

[Abstract](#)

[Introduction](#)

[Conclusions](#)

[References](#)

[Tables](#)

[Figures](#)

[⏪](#)

[⏩](#)

[◀](#)

[▶](#)

[Back](#)

[Close](#)

[Full Screen / Esc](#)

[Printer-friendly Version](#)

[Interactive Discussion](#)



version 3.0, Geosci. Model Dev., 3, 445–473, doi:10.5194/gmd-3-445-2010, 2010.

Labonne, M., Breon, F.-M., and Chevallier, F.: Injection heights of biomass burning aerosols as seen from a space borne lidar, *Geophys. Res. Lett.*, 34, L11806, doi:10.1029/2007GL029311, 2007.

5 Marengo, A., Thouret, V., Nedelec, P., Smit, H., Helten, M., Kley, D., Karcher, F., Simon, P., Law, K., Pyle, J., Poschmann, G., Wrede, R. V., Hume, C., and Cook, T.: Measurements of ozone and water vapour by Airbus in-service aircraft: The MOZAIC airborne program, An overview, *J. Geophys. Res.*, 103, 25631–25642, 1998.

10 Nedelec, P., Cammas, J.-P., Thouret, V., Athier, G., Cousin, J.-M., Legrand, C., Abonnel, C., Lecoœur, F., Cayez, G., and Marizy, C.: An improved infrared carbon monoxide analyser for routine measurements aboard commercial Airbus aircraft: technical validation and first scientific results of the MOZAIC III programme, *Atmos. Chem. Phys.*, 3, 1551–1564, doi:10.5194/acp-3-1551-2003, 2003.

15 Ohara, T., Akimoto, H., Kurokawa, J., Horii, N., Yamaji, K., Yan, X., and Hayasaka, T.: An Asian emission inventory of anthropogenic emission sources for the period 1980–2020, *Atmos. Chem. Phys.*, 7, 4419–4444, doi:10.5194/acp-7-4419-2007, 2007.

Redelsperger, J.-L., Thorncroft, C. D., Diedhiou, A., Lebel, T., Parker, D. J., and Polcher, J.: African Monsoon Multidisciplinary Analysis: An International Research Project and Field Campaign, *B. Am. Meteorol. Soc.*, 87, 1739–1746, 2006.

20 Schultz, M. G., Backman, L., Balkanski, Y., Bjoerndalsaeter, S., Brand, R., Burrows, J. P., Dalsoeren, S., de Vasconcelos, M., Grodtmann, B., Hauglustaine, D. A., Heil, A., Hoelzemann, J. J., Isaksen, I. S. A., Kaurola, J., Knorr, W., Ladstaetter-Weienmayer, A., Mota, B., Oom, D., Pacyna, J., Panasiuk, D., Pereira, J. M. C., Pulles, T., Pyle, J., Rast, S., Richter, A., Savage, N., Schnadt, C., Schulz, M., Spessa, A., Staehelin, J., Sundet, J. K., Szopa, S., Thonicke, K., van het Bolscher, M., van Noije, T., van Velthoven, P., Vik, A. F., and Wittrock, F.: REanalysis of the TROpospheric chemical composition over the past 40 years (RETRO) – A long-term global modeling study of tropospheric chemistry, Final Report, Julich/Hamburg, Germany, 2007, published as report no. 48/2007 in the series “Reports on Earth System Science” of the Max Planck Institute for Meteorology, Hamburg, 2007.

30 Shindell, D. T., Faluvegi, G., Stevenson, D. S., Krol, M. C., Emmons, L. K., Amann, C. S. Atherton and D. J. Bergmann, I. Bey, T. Butler, K., Cofala, J., Collins, W. J., Derwent, R. G., Doherty, R. M., Drevet, J., Eskes, H. J., Fiore, A. M., Gauss, M., Hauglustaine, D. A., Horowitz, L. W., Isaksen, I. S. A., Lawrence, M. G., Montanaro, V., Müller, J.-F., Pitari, G.,

Prather, M. J., Pyle, J. A., Rast, S., Rodriguez, J. M., Sanderson, M. G., Savage, N. H., Strahan, S. E., Sudo, K., Szopa, S., Unger, N., van Noije, T. P. C., and Zeng, G.: Multimodel simulations of carbon monoxide: Comparison with observations and projected near-future changes, *J. Geophys. Res.*, 111, D19306, doi:10.1029/2006JD007100, 2006.

- 5 van der Werf, G. R., Randerson, J. T., Giglio, L., Collatz, G. J., Kasibhatla, P. S., and Arellano Jr., A. F.: Interannual variability in global biomass burning emissions from 1997 to 2004, *Atmos. Chem. Phys.*, 6, 3423–3441, doi:10.5194/acp-6-3423-2006, 2006.

AMTD

5, 1985–2010, 2012

Validation of six years of SCIAMACHY carbon monoxide observations

A. T. J. de Laat et al.

Title Page

Abstract

Introduction

Conclusions

References

Tables

Figures

⏪

⏩

◀

▶

Back

Close

Full Screen / Esc

Printer-friendly Version

Interactive Discussion



Validation of six years of SCIAMACHY carbon monoxide observations

A. T. J. de Laat et al.

Table 1. Δ is the mean difference between SCIAMACHY and MOZAIC CO total columns (10^{17} molecules cm^{-2} and percentage). σ is the mean root-mean-square difference between SCIAMACHY and MOZAIC CO total columns (10^{17} molecules cm^{-2} and percentage). R is the Pearson's correlation coefficient for the comparison between SCIAMACHY and MOZAIC CO total columns. N is the total number of SCIAMACHY-MOZAIC comparison values. OCE is the estimated below cloud partial CO column for SCIAMACHY CO total column measurements over low altitude clouds over oceans (10^{17} molecules cm^{-2} and percentage). Note that for many grids SCIAMACHY averages are based on both land and ocean measurements (see also PIX OCE). PIX OCE is the fractional part of SCIAMACHY measurements taken over low altitude ocean clouds for that particular grid box. UTLS is the TM5 estimated CO column above the maximum height of the MOZAIC profile (percentage of the MOZAIC total column). Z = mean elevation with $8^\circ \times 8^\circ$ comparison grid (meters).

No.	Lon	Lat	Δ [10^{17}]	Δ [%]	σ [10^{17}]	σ [%]	R	N	OCE [10^{17}]	OCE [%]	PIX OCE [%]	UTLS [%]	Z [m]
1	-120	34	-3.7	-17	4.1	19	0.61	75	1.6	8	94	6	407
2	-120	42	-4.1	-18	3.3	15	0.70	20	0.2	1	39	5	1165
3	-120	50	-3.2	-15	4.1	19	0.47	46	<0.1	<1	1	5	954
4	-96	34	-3.0	-14	4.5	21	0.41	90	<0.1	<1	1	9	263
5	-80	34	-1.5	-7	4.7	21	0.37	108	1.5	7	95	8	150
6	-88	42	-3.3	-14	3.6	15	0.54	35	0.0	0	0	7	228
7	-80	42	-3.0	-13	4.4	19	0.38	66	0.0	0	0	8	249
8	-72	42	-3.0	-12	3.5	14	0.50	143	3.7	15	99	9	127
9	-72	50	-1.1	-5	5.9	27	-0.11	22	0.0	0	3	5	400
10	-64	10	-4.3	-19	5.5	25	0.07	42	1.0	5	100	10	116
11	0	10	-11.2	-36	9.5	31	0.12	26	<0.1	<1	18	9	230
12	16	-22	-1.1	-7	4.1	27	0.56	211	0.2	1	59	10	917
13	0	50	-2.4	-11	3.5	16	0.53	76	2.6	12	96	9	81
14	8	50	-1.4	-6	4.3	20	0.48	114	1.2	6	77	6	362
15	16	50	-0.7	-3	4.4	21	0.44	96	<0.1	<1	6	5	314
16	32	18	-5.4	-25	5.2	24	0.08	14	0.0	0	0	10	429
17	32	26	-5.3	-24	3.8	17	0.17	20	<0.1	<1	8	8	300
18	32	34	-5.2	-24	3.6	16	0.41	62	0.4	2	56	11	326

Validation of six years of SCIAMACHY carbon monoxide observations

A. T. J. de Laat et al.

Table 1. Continued.

No.	Lon	Lat	Δ [10^{17}]	Δ [%]	σ [10^{17}]	σ [%]	R	N	OCE [10^{17}]	OCE [%]	PIX OCE [%]	UTLS [%]	Z [m]
19	48	26	-2.6	-13	4.2	21	0.02	31	<0.1	<1	14	10	346
20	56	26	-3.5	-17	3.2	15	0.42	68	0.1	<1	39	12	520
21	48	34	-11.7	-40	12.0	41	-0.07	68	<0.1	<1	26	5	1119
22	112	26	-0.2	0	8.3	27	0.22	21	1.7	6	91	9	363
23	120	34	-3.0	-9	9.1	27	0.35	30	3.9	12	98	12	56
24	112	42	-21.5	-57	16.4	43	0.02	54	0.0	0	0	3	1132
25	80	18	-0.7	-3	5.4	25	0.31	75	0.1	<1	42	10	311
26	80	26	-3.9	-16	4.7	20	0.05	53	0.0	0	0	10	648
27	104	10	-2.6	-11	3.1	13	0.46	8	1.8	8	100	11	65
28	96	18	-4.3	-17	7.8	31	-0.52	15	0.7	3	72	9	360
29	136	34	-3.2	-11	5.9	22	0.38	105	4.2	16	100	6	112
30	144	34	-3.7	-14	5.2	19	0.35	57	3.5	13	100	5	9

Title Page

Abstract

Introduction

Conclusions

References

Tables

Figures

◀

▶

◀

▶

Back

Close

Full Screen / Esc

Printer-friendly Version

Interactive Discussion

Table 2. Most frequently visited airports for which ascending or descending MOZAIC flights fall within the $8^\circ \times 8^\circ$ grid box.

No.	Cities
1	Vancouver
2	Portland
3	San Francisco, Los Angeles
4	Houston, Dallas
5	Atlanta, Miami
6	Chicago
7	Cincinnati, Detroit, Washington
8	Philadelphia, New York, Boston
9	Montreal, Toronto
10	Caracas
11	Lagos
12	Windhoek
13	London, Paris, Brussels
14	Munich, Frankfurt
15	Vienna
16	Khartoum
17	Cairo
18	Tel Aviv
19	Riyadh, Kuwait
20	Dubai, Abu Dhabi
21	Teheran
22	Hong Kong
23	Shanghai
24	Beijing
25	Madras, Hyderabad
26	Delhi
27	Bangkok*
28	Bangkok*
29	Osaka
30	Tokyo

*Depending on the airport location the direction of descending or ascending MOZAIC flights can fall within different grid boxes, as is the case for Bangkok.

Validation of six years of SCIAMACHY carbon monoxide observations

A. T. J. de Laat et al.

Title Page

Abstract Introduction

Conclusions References

Tables Figures

⏪ ⏩

◀ ▶

Back Close

Full Screen / Esc

Printer-friendly Version

Interactive Discussion



Validation of six years of SCIAMACHY carbon monoxide observations

A. T. J. de Laat et al.

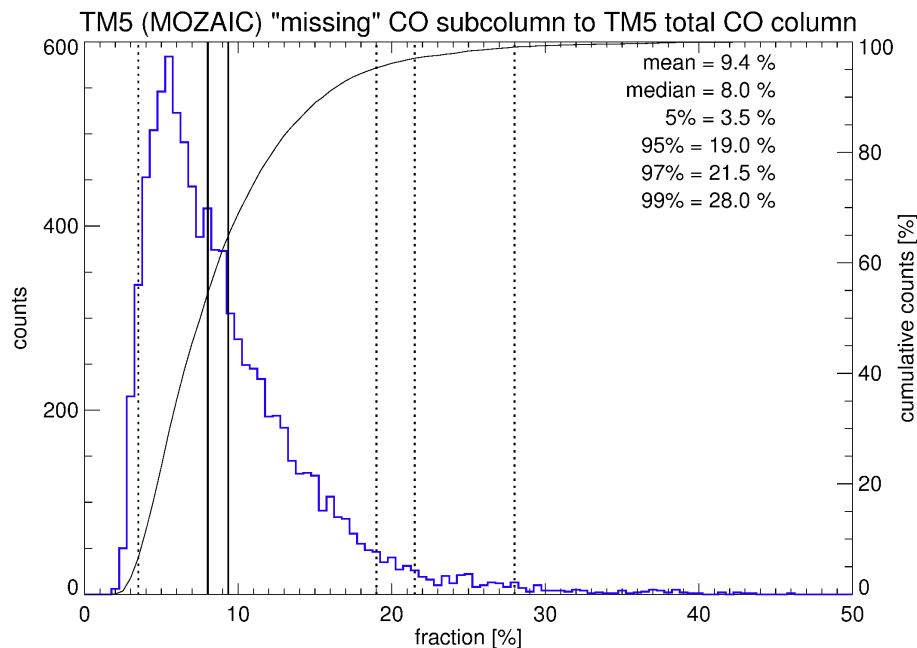


Fig. 1. Probability distribution of the partial CO column “missed” by MOZAIC due to the maximum altitude of MOZAIC CO profiles based on collocated TM5 simulated CO profiles. The “missing” partial column is expressed as fraction of the total column. Indicated are also cumulative counts, the mean and median values (solid lines) and the 5% and 95/97/99% occurrence intervals (dashed lines).

[Title Page](#)[Abstract](#)[Introduction](#)[Conclusions](#)[References](#)[Tables](#)[Figures](#)[◀](#)[▶](#)[◀](#)[▶](#)[Back](#)[Close](#)[Full Screen / Esc](#)[Printer-friendly Version](#)[Interactive Discussion](#)

Validation of six years of SCIAMACHY carbon monoxide observations

A. T. J. de Laat et al.

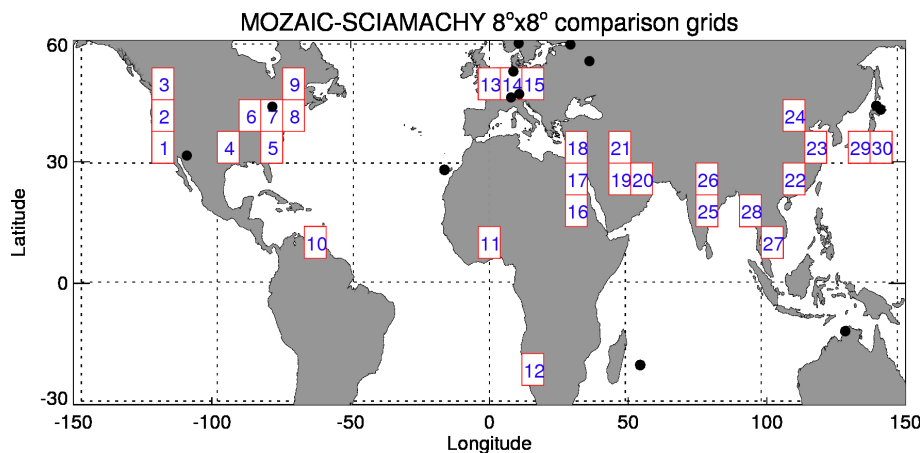


Fig. 2. Grid areas of $8^\circ \times 8^\circ$ with at least 25 MOZAIC comparison values for the period 2003–2008 (see Sect. 2 for explanation of how the comparison is devised). Grids are numbered from south to north and west to east for use in other figures. The black dots denote FTIR locations used for validation of SCIAMACHY CO in de Laat et al. (2010).

Title Page

Abstract

Introduction

Conclusions

References

Tables

Figures

◀

▶

◀

▶

Back

Close

Full Screen / Esc

Printer-friendly Version

Interactive Discussion



Validation of six years of SCIAMACHY carbon monoxide observations

A. T. J. de Laat et al.

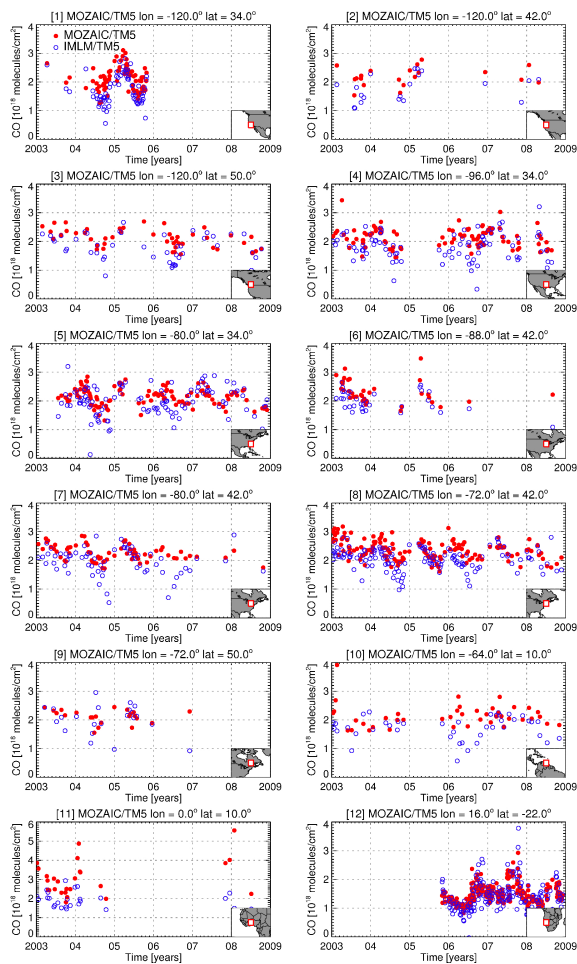


Fig. 3. See caption on p. 2009.

Title Page

Abstract

Introduction

Conclusions

References

Tables

Figures

⏪

⏩

◀

▶

Back

Close

Full Screen / Esc

Printer-friendly Version

Interactive Discussion

Validation of six years of SCIAMACHY carbon monoxide observations

A. T. J. de Laat et al.

[Title Page](#)

[Abstract](#)

[Introduction](#)

[Conclusions](#)

[References](#)

[Tables](#)

[Figures](#)

[⏪](#)

[⏩](#)

[◀](#)

[▶](#)

[Back](#)

[Close](#)

[Full Screen / Esc](#)

[Printer-friendly Version](#)

[Interactive Discussion](#)

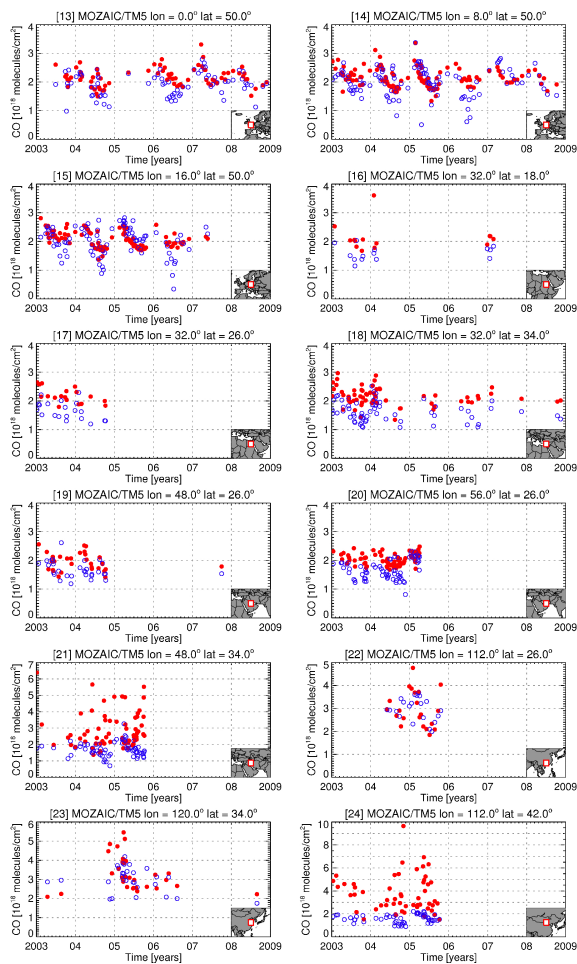


Fig. 3. See caption on next page.

Validation of six years of SCIAMACHY carbon monoxide observations

A. T. J. de Laat et al.

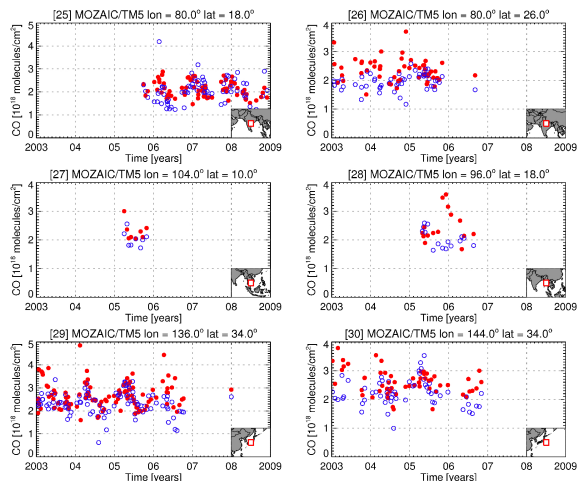


Fig. 3. Comparison of SCIAMACHY and MOZAIC time series for the period 2003–2008 for the $8^\circ \times 8^\circ$ grid boxes shown in, and numbered according to, Fig. 2. The small map in the lower right corner of the panels denotes the grid box for orientation. The coordinates in the panel titles is the central longitude-latitude of the grid box. SCIAMACHY CO is denoted by the open circles, with the blue circles denoting measurements that have corresponding MOZAIC measurements. The filled red markers are the MOZAIC measurements.

[Title Page](#)
[Abstract](#)
[Introduction](#)
[Conclusions](#)
[References](#)
[Tables](#)
[Figures](#)
[⏪](#)
[⏩](#)
[◀](#)
[▶](#)
[Back](#)
[Close](#)
[Full Screen / Esc](#)
[Printer-friendly Version](#)
[Interactive Discussion](#)

Validation of six years of SCIAMACHY carbon monoxide observations

A. T. J. de Laat et al.

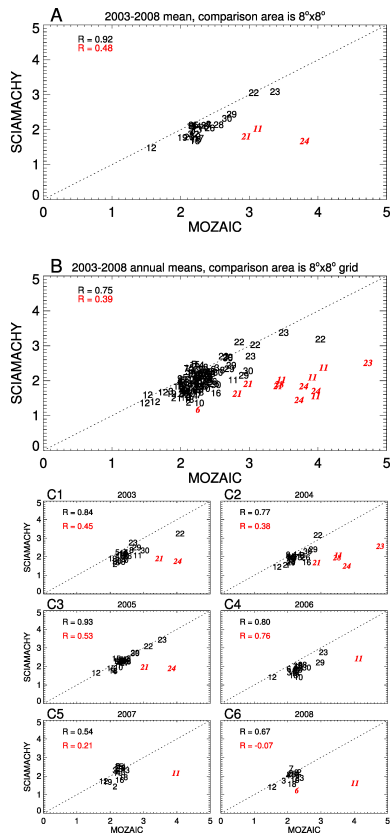


Fig. 4. (A) Scatter plot of SCIAMACHY and MOZAIC 2003–2008 mean CO total columns for the locations shown in Figs. 2 and 3. Stations are numbered according to Fig. 2 and Table 1. Red colored numbers indicate locations where the absolute differences between SCIAMACHY and MOZAIC are larger than 1×10^{18} molecules cm^{-2} . The correlation values correspond to the correlation for all locations (red value) and correlation with locations where absolute differences between SCIAMACHY and MOZAIC is larger than 1×10^{18} molecules cm^{-2} removed (black value). (B) Similar to (A) but for all annual means for the period 2003–2008. (C1)–(C6) Similar to (B) but for every year separately.