

**A disjunct eddy
accumulation system
for the measurement
of BVOC fluxes**

G. D. Edwards et al.

**A disjunct eddy accumulation system
for the measurement of BVOC fluxes:
instrument characterizations and field
deployment**

G. D. Edwards¹, D. K. Martins^{2,*}, T. Starn³, K. Pratt², and P. B. Shepson^{2,4}

¹Department of Chemistry, Eastern Michigan University, Ypsilanti, MI 48197, USA

²Department of Chemistry, Purdue University, West Lafayette, IN 47907, USA

³Department of Chemistry, West Chester University, West Chester, PA 19383, USA

⁴Purdue Climate Change Research Center, Purdue University, West Lafayette, IN 47907, USA

* now at: Department of Meteorology, Pennsylvania State University, University Park, PA 16802, USA

Received: 20 January 2012 – Accepted: 22 March 2012 – Published: 4 April 2012

Correspondence to: G. D. Edwards (gedward4@emich.edu)

Published by Copernicus Publications on behalf of the European Geosciences Union.

Title Page

Abstract

Introduction

Conclusions

References

Tables

Figures

⏪

⏩

◀

▶

Back

Close

Full Screen / Esc

Printer-friendly Version

Interactive Discussion

Abstract

Biological volatile organic compounds (BVOCs), such as isoprene and monoterpenes, are emitted in large amounts from forests. Quantification of the flux of BVOCs is critical in the evaluation of the impact of these compounds on the concentrations of atmospheric oxidants and on the production of secondary organic aerosol. A disjunct eddy accumulation (DEA) sampler system was constructed for the measurement of speciated BVOC fluxes. Unlike traditional eddy covariance (EC), the relatively new technique of disjunct sampling differs by taking short, discrete samples that allows for slower sampling frequencies. Disjunct sample airflow is directed into cartridges containing sorbent materials at sampling rates proportional to the magnitude of the vertical wind. Compounds accumulated on the cartridges are then quantified by thermal desorption and gas chromatography. Herein, we describe our initial tests to evaluate the disjunct sampler including the application of using vertical wind measurements to create optimized sampling thresholds. Measurements of BVOC fluxes obtained from DEA during its deployment above a mixed hardwood forest at the University of Michigan Biological Station (Pellston, MI) during the 2009 CABINEX field campaign are reported. Daytime (09:00 a.m. to 05:00 p.m.) isoprene fluxes, when averaged over the footprint of the tower were $1.31 \text{ mg m}^{-2} \text{ h}^{-1}$ which is comparable to previous flux measurements at this location. Speciated monoterpene fluxes are some of the first to be reported from this site. Daytime averages were $26.7 \text{ } \mu\text{g m}^{-2} \text{ h}^{-1}$ for α -pinene and $10.6 \text{ } \mu\text{g m}^{-2} \text{ h}^{-1}$ for β -pinene. These measured concentrations and fluxes were compared to the output of an atmospheric chemistry model, and were found to be consistent with our knowledge of the variables that control BVOCs fluxes at this site.

1 Introduction

Biological volatile organic compounds (BVOCs) released from the biosphere have been shown to play a significant role in atmospheric chemistry (Guenther et al., 1993).

A disjunct eddy accumulation system for the measurement of BVOC fluxes

G. D. Edwards et al.

Title Page

Abstract

Introduction

Conclusions

References

Tables

Figures

⏪

⏩

◀

▶

Back

Close

Full Screen / Esc

Printer-friendly Version

Interactive Discussion



A disjunct eddy accumulation system for the measurement of BVOC fluxes

G. D. Edwards et al.

Title Page

Abstract

Introduction

Conclusions

References

Tables

Figures

⏪

⏩

◀

▶

Back

Close

Full Screen / Esc

Printer-friendly Version

Interactive Discussion



Plants are estimated to emit greater than 1.2×10^{12} kg of these BVOCs per year to the atmosphere, an estimated 40 % of which is made up of one species, isoprene (2-methyl-1,3-butadiene, C_5H_8) (Guenther et al., 1995). Emission rates of isoprene are strongly correlated with ambient light and temperature (e.g., Loreto et al., 1997). The next largest contributors to the total BVOC flux are monoterpenes, molecules with the general formula $C_{10}H_{16}$, which include the species α - and β -pinene (Kesselmeier and Staudt, 1999; Lee et al., 2005). Isoprene is emitted by many broad-leaf species while monoterpenes are emitted from conifers as well as broad-leaved trees. Monoterpene emission rates appear to be largely controlled by temperature (e.g., Guenther et al., 1993; Arneth et al., 2008). These BVOCs are highly reactive due to their nature as unsaturated hydrocarbons. In the sunlit troposphere, hydroxyl radicals (OH) can rapidly attack these molecules and add across the carbon-carbon double bonds, creating peroxy radical intermediates (e.g., Zhang et al., 2000). In the presence of nitrogen oxides ($NO + NO_2$), the peroxy radicals generate photochemical ozone via oxidation of NO to NO_2 (Chamedies et al., 1971). Isoprene oxidation via this mechanism has been implicated in regional events of elevated tropospheric ozone (e.g., Biesenthal et al., 1997; Harrison et al., 2001). Similar mechanisms also describe the oxidation of monoterpenes to produce ozone (e.g., Kesselmeier and Staudt, 1999). In addition to their influence on the oxidative capacity of the atmosphere, BVOC oxidation products can contribute to secondary organic aerosol (SOA) formation (e.g., Makela et al., 1997; Kavouras et al., 1999; Griffin et al., 1999). BVOC-derived SOA represents a source of aerosol to the atmosphere that can impact both regional air quality and global climate (Andreae and Crutzen, 1997). The potential role of isoprene and other naturally emitted hydrocarbons in biosphere-climate chemistry feedbacks was summarized by Shallcross and Monks (2000) and Fuentes et al. (2001). Knowledge of speciated BVOC emission rates is essential to reduce uncertainties associated with predictions of BVOC concentrations and subsequent impacts on the SOA and ozone production on local, region and global scales.

A disjunct eddy accumulation system for the measurement of BVOC fluxes

G. D. Edwards et al.

Title Page

Abstract

Introduction

Conclusions

References

Tables

Figures

⏪

⏩

◀

▶

Back

Close

Full Screen / Esc

Printer-friendly Version

Interactive Discussion

The most common flux measurement reported to date is the eddy covariance (EC) approach (Baldocchi et al., 1995). In EC, it is necessary to utilize a method that measures BVOC concentration on a time scale corresponding to the smallest of the important eddies that carry the flux, i.e., up to 10 Hz (Baldocchi et al., 1995). However, for many trace-level species, this is often not feasible as current analytical techniques have insufficient response times. The current exceptions are proton transfer-reaction mass spectrometry, PTR-MS, which has been used for isoprene flux measurements (e.g., Karl et al., 2004; Warneke et al., 2005), and the Fast Isoprene Sensor (e.g., Westberg et al., 2001). However, PTR-MS cannot determine speciated monoterpene fluxes as these instruments measure the sum of all of the isobaric monoterpene species (e.g., Kim et al., 2009). Further, the Fast Isoprene Sensor suffers interference in environments where isoprene is not the dominate alkene (Edwards et al., 2007; Barket et al., 2001). To measure the fluxes of both isoprene and speciated monoterpenes, methods that enable fast sampling with off-line analysis have been developed. By using systems that accumulate the species of interest, the low ambient concentration of these molecules can be overcome. There are two types of accumulation-based flux measurements: the established technique of relaxed eddy accumulation (REA) (e.g., Tani et al., 2002; Christensen et al., 2001; Lee et al., 2005; Kuhn, 2007) and, more recently, disjunct eddy accumulation (DEA) (e.g., Rinne et al., 2000, 2002; Turnipseed et al., 2009). The premise of DEA is similar to REA in that two segregated samples are taken based on the direction of the vertical wind. However, rather than sampling all eddies as in REA, in DEA a larger volume from a statistically representative and objectively collected set of eddies is sampled into an intermediate storage reservoir. The air is partitioned into updraft and downdraft reservoirs over some averaging period. This is based on the sign of the vertical wind and proportional to its magnitude. The average flux over the sampling period is related to the concentrations in the updraft and downdraft reservoirs as determined by analysis of these reservoirs off-line using a suitable analysis platform such as gas chromatography. As a large part of the flux in the atmospheric surface layer is carried by relatively large eddies, Lenschow et al. (1994), showed that

A disjunct eddy accumulation system for the measurement of BVOC fluxes

G. D. Edwards et al.

Title Page

Abstract

Introduction

Conclusions

References

Tables

Figures

⏪

⏩

◀

▶

Back

Close

Full Screen / Esc

Printer-friendly Version

Interactive Discussion



the disjunct sampling does not increase the statistical uncertainty of the flux values more than 8 % if the time interval between samples is shorter than the appropriate integral timescale. A major advantage of disjunct eddy accumulation this is a direct flux measurement method and does not depend on similarity assumptions, empirical relationships or derived correction constants. This makes the approach potentially less vulnerable to systematic errors, which can affect gradient and REA measurements (Rinne et al., 2000). However, as described by Turnipseed et al. (2009), disjunct sampling allows longer time to process the samples, but increases the uncertainty of the measurements and with mechanically undisturbed wind measurements and relatively homogeneous conditions; DEA can be a viable approach for the flux measurements.

In this paper, a new DEA sampling system is described that has been used to measure of both isoprene and speciated monoterpenes mixing ratios and fluxes. Characterization of the DEA system is described both in the lab and also, the field. In addition, field measurements of ambient isoprene and monoterpene (α - and β -pinene) concentrations and fluxes above a forest site in Northern Michigan are reported. Here, the DEA system was deployed at the University of Michigan Biological Station (UMBS, Carroll et al., 2001) as part of the Combined Atmosphere-Biosphere Intensive Experiment (CABINEX) campaign (Bertman et al., 2012). The UMBS region forest is a late successional growth forest, where the main tree species, aspen (a strong isoprene emitter), is at the end of its life cycle, and the forest is now undergoing a successional transition to a forest more substantially impacted by terpene emitters, such as white pine (Stearns and Likens, 2002; Bergen and Dronova, 2007). Thus, the ability to measure the impacts on and implications for local atmospheric chemistry above the forest during such transition is important, and represents a good opportunity to examine the differences in impacts of isoprene vs. terpenes. To our knowledge, DEA has only been utilized to measure both isoprene and speciated monoterpenes just once previously, by Rinne et al. (2002) for experiments in the Amazon. The deployment of our DEA system during CABINEX represents the first use of the disjunct accumulation technique for

the purpose of determining both isoprene and monoterpene fluxes in North American forest, and at one undergoing a successional transition.

2 Theory of operation

For a disjunctly sampled time series, the turbulent flux of a scalar, c , can be estimated as the covariance of the subset of data points and the vertical velocity component of the wind, w (Rinne et al., 2000).

$$F_c = \langle w'c' \rangle_{\text{disj}} = \frac{1}{N} \sum_{i=1}^N w'(t_i)c'(t_i) \quad (1)$$

Here, N is the total number of disjunctly sampled points, and w' and c' are deviations from the mean of the vertical velocity w , and the scalar density c , respectively. The variable t_i represents the i th time component of an ensemble time average for the disjunct sample. Turnipseed et al. (2009) showed that for continuous sampling, accumulated volumes (V^+ for updrafts and V^- for downdrafts) from each disjunctly isolated air sample that is stored in some initial storage reservoir can be dispensed into updraft or downdraft reservoirs at rates proportional to the instantaneous vertical wind. The total scalar flux can be related to the concentrations in these updraft and downdraft reservoirs where, under ideal conditions:

$$F_c = \langle w'c' \rangle_{\text{disj}} = \frac{V^\pm}{kN} (c^+ - c^-) = \frac{\overline{w'_{\text{disj}}}}{2} (c^+ - c^-) \quad (2)$$

Here, V^\pm represents the total volume over the entire flux averaging period, k is a constant relating the sampling flow rate and/or the dispense time to w , and $\overline{w'_{\text{disj}}}$ is the mean vertical wind velocity during disjunct sampling. The variables c^+ and c^- represent the concentrations of the scalar in the updraft or downdraft reservoirs. Under ideal

A disjunct eddy accumulation system for the measurement of BVOC fluxes

G. D. Edwards et al.

Title Page

Abstract

Introduction

Conclusions

References

Tables

Figures

⏪

⏩

◀

▶

Back

Close

Full Screen / Esc

Printer-friendly Version

Interactive Discussion



conditions, $\bar{w}_{\text{disj}} = 0$ and the volume collected as updrafts equals that of downdrafts. However, under real atmospheric conditions, $\bar{w}_{\text{disj}} \neq 0$, and unequal volumes are collected. The volume difference, ΔV , is a function of the total volume collected V_{tot} where,

$$\Delta V = V^+ - V^- = 2fV_{\text{tot}} \quad (3)$$

Here, f is a scaling factor as described by Hicks and McMillen (1984), calculated according to:

$$f = \left(\frac{V^+}{V_{\text{tot}}} - \frac{1}{2} \right) \quad (4)$$

The mass m in each accumulated reservoir can now be related to the ideal case (m_v) such that

$$m^+ = m_v^+ + \frac{\Delta V}{2} c^+ = m_v^+ + V_{\text{tot}} f c^+ \quad (5a)$$

$$m^- = m_v^- + \frac{\Delta V}{2} c^- = m_v^- + V_{\text{tot}} f c^- \quad (5b)$$

Turnipseed et al. (2009) showed that if \bar{w}_{disj} and \bar{c}_{disj} are the mean vertical wind and concentration of the scalar c respectively, Eq. (2) now becomes:

$$F_c = \langle w'c' \rangle_{\text{disj}} = \frac{1}{kN} (m_v^+ - m_v^-) + \bar{w}_{\text{disj}} \left(\frac{(c^+ + c^-)}{2} - \bar{c}_{\text{disj}} \right) \quad (6)$$

Or, in terms of the density of the scalar, c , the average is taken from the absolute value of vertical wind velocities such that

$$F_c = \langle w'c' \rangle = \frac{|\bar{w}_{\text{disj}}|}{2} (c_v^+ - c_v^-) + \bar{w}_{\text{disj}} \left(\frac{(c^+ + c^-)}{2} - \bar{c}_{\text{disj}} \right) \quad (7)$$

A disjunct eddy accumulation system for the measurement of BVOC fluxes

G. D. Edwards et al.

Title Page

Abstract

Introduction

Conclusions

References

Tables

Figures

◀

▶

◀

▶

Back

Close

Full Screen / Esc

Printer-friendly Version

Interactive Discussion

3 Lab characterizations

Figure 1 shows a flow schematic of the DEA sampler. During routine operation, ambient samples are acquired every 30 s with the system operating autonomously. All of the analog and digital input/outputs were controlled using Labview 8.6 (National Instruments, Corp.) using custom designed software. The sampling cycle begins by rapidly flushing ambient air through a 3.5 m, 0.95 cm ID inlet and through an intermediate storage reservoir, (ISR) using a rotary vane vacuum pump (Gast, model 1023-101Q-G608X). The ISR consists of a heated ($T = 60^{\circ}\text{C}$), PFA coated, stainless steel cylinder of 300 cm^3 internal volume. At pre-determined time intervals, the instantaneous value of the vertical wind is recorded and the control computer closes two 0.79 cm solenoid stop valves (Parker, model no. 7121SN21V00N0C111P3) upstream and downstream of the ISR to secure the sample. The magnitude and direction of the vertical wind is measured using a CSAT3 sonic anemometer (Campbell Scientific, Inc.) at a frequency of 10 Hz. The flow rate through the ISR was measured to be 152 SLPM giving a residence time of air within the inlet tubing and ISR of 0.12 s during flushing. This lag was used to synchronize the DEA with the correct wind measurement; the control computer thus accounts for the delay associated with this transfer time from the inlet to the ISR before closing.

Samples are then taken from the ISR by directing the airflow through pre-conditioned glass-lined sample cartridge traps ($10.2\text{ cm} \times 0.3\text{ cm}$ ID) via a micro diaphragm gas pump (KNF Neuberger, model no. UNMP830) and additional control valves. Each cartridge trap is loaded with 100 mg of Tenax-TA (Scientific Instrument Services, Inc.) to ensure capture of the molecules of interest. The flow rate through the traps was controlled at $200.00 (\pm 0.44)$ sccm using a mass flow controller, MFC (MKS, Inc. 1179A25090). The pressure within the ISR was also monitored using an absolute pressure transducer (Omega; PX181-015G5V). After the sample is acquired, the sampling valves are closed, and the stop valves are opened to re-flush the ISR and repeat the cycle. The cartridge traps accumulate updraft and downdraft samples for user

A disjunct eddy accumulation system for the measurement of BVOC fluxes

G. D. Edwards et al.

Title Page

Abstract

Introduction

Conclusions

References

Tables

Figures



Back

Close

Full Screen / Esc

Printer-friendly Version

Interactive Discussion



A disjunct eddy accumulation system for the measurement of BVOC fluxes

G. D. Edwards et al.

Title Page

Abstract

Introduction

Conclusions

References

Tables

Figures

⏪

⏩

◀

▶

Back

Close

Full Screen / Esc

Printer-friendly Version

Interactive Discussion



defined periods of time. Once the cartridges are removed, they are capped at both ends using stainless steel caps with PTFE seals (Scientific Instrument Services, Inc. model 781006), placed in a plastic test tube (BD Falcon 14-959 Series), which itself is purged with high purity nitrogen (UHP 5.0, Praxair). Analyses of the samples was conducted using a commercial thermal desorption system (Scientific Instrument Services TD-4) coupled to a gas chromatograph with a flame ionization detector (HP 5890). Total analysis time between samples from initial injection to completion of analysis was ~ 50 min per cartridge.

To ensure the cartridges are free from potential interferences prior to sample collection, each sample cartridge is preconditioned. This was achieved by heating the cartridges to 350 °C for 15 min under a flow of pure helium (UHP 5.0, Praxair). Sampled cartridges were analyzed after periods of time ranging from 1 h to 1 week. None of the preconditioned traps showed any artifact peaks in the GC-FID chromatograms after the preconditioning process. The finite amount of sorbent materials in the cartridge traps leads to a finite “breakthrough” (or elution) volume (e.g., Simon et al., 1995). Tests were conducted to determine the breakthrough volume for the cartridges used. For the most volatile of the BVOCs of interest, isoprene, the breakthrough volume was found to be in excess of 5 l for the cartridges described here. Measurements made using the DEA sampler resulted in sample volumes less than 3.5 l (as will be described in Sect. 4). Hence, it is unlikely that any samples were subject to breakthrough. As monoterpenes are less volatile than isoprene, it is likely that the monoterpene breakthrough volume is larger. Similarly, although breakthrough volumes decrease with increasing temperature (Simon et al., 1995), the maximum temperature encountered in the field was only 28 °C and thus similar to those in the lab experiments (Bertman et al., 2012).

BVOC losses due to reactions in the sample lines of the DEA sampler were assumed to be minimal. During normal operation, the residence time of air samples in the inlet is 0.12 s. BVOCs have lifetimes of several minutes under typical concentrations of atmospheric oxidants (OH, O₃) (Atkinson et al., 1997). It is therefore unlikely that the residence time within the inlet line is long enough to cause significant loss of the target

A disjunct eddy accumulation system for the measurement of BVOC fluxes

G. D. Edwards et al.

Title Page

Abstract

Introduction

Conclusions

References

Tables

Figures

⏪

⏩

◀

▶

Back

Close

Full Screen / Esc

Printer-friendly Version

Interactive Discussion



molecules prior to trapping within the ISR. Similarly, we assume negligible BVOC loss by OH during storage in the ISR. OH has an atmospheric lifetime of typically a few tenths of a second at UMBS (diCarlo et al., 2004), so it is reasonable to assume most, if not all OH has been lost prior to reaching the ISR. If some OH remains, assuming typical ambient concentrations of OH, isoprene and monoterpenes, and a ISR storage time of 20 s, the loss of these molecules due to OH reaction is less than 1 %.

Reactive losses within the ISR are assumed to be small as ozonolysis lifetimes for isoprene are several orders of magnitude smaller than for OH reactions (e.g., Atkinson et al., 1997). BVOCs do, however, has the potential to react with ozone while the BVOCs are trapped on the sorbent bed, thereby presenting erroneous results (e.g., Calogirou et al., 1996; Helmig, 1997; Dettmer et al., 2002). This is primarily due to the long accumulation times associated with DEA (>50 min for most samples). As summarized by Helmig (1997), various materials can be used to remove ozone during sampling. To allow for maximum recovery of the highly reactive BVOCs, ozone “scrubbers” were added to the DEA sampler immediately prior to the “up” and “down” cartridge traps. These consisted of a 0.635 cm PFA union loaded with 350 mg of KI. Inert glass wool was used to seal the KI within the ozone scrubber. During laboratory tests, 8 ppb of isoprene and 500 pptv of monoterpenes were sampled onto a cartridge trap every 30 s for a period of 1 h, first in air with no ozone and then with 50 ppb of ozone added to the samples. No statistically significant loss of BVOCs was observed as a result of the presence of ozone; GC peaks for both isoprene and monoterpenes were within the measured precision indicating effective removal of the ozone by the KI. In addition, the presence of the KI did not cause the formation of any artifacts or additional peaks in the chromatograms or give rise to any change in the flow rate through the cartridge traps. During ambient sampling each KI scrubber was changed daily. Fick et al. (2001) showed that 200 mg of KI could scrub 75 ppb of ozone without significant artifact formation for 24 h with over 95 % retention of the BVOC α -pinene. Since the sampler does not operate continually, and the ambient air during field deployment contains less than

75 ppb of ozone (Bertman et al., 2012), we assume that the 350 mg KI scrubbers were able to efficiently remove all ozone during routine operation.

The DEA instrument was calibrated by using gas phase standards made using liquid, reagent grade isoprene, α -pinene and β -pinene (99.9% purity, Aldrich) and injecting them into a TedlarTM bag typically filled with 120 l of air to achieve a known concentration of gas phase BVOCs representative of typical ambient conditions. The relative uncertainty in the mass of species accumulated on a cartridge trap was calculated via Eq. (8), where:

$$\%e_{\text{conc}} = \sqrt{(\%e_{\text{peak}})^2 + (\%e_{\text{cal}})^2 + (\%e_{\text{vol}})^2} \quad (8)$$

Here, $\%e$ represents the relative uncertainty and the subscripts peak, cal, and vol represent the integrated chromatogram peak height, calibration factor (i.e., slope of the calibration curve), and accumulated volume during disjunct sampling. The parameter $\%e_{\text{peak}}$ is affected by precision during desorption, separation, and detection of both isoprene and monoterpenes. Precision was calculated to be $\pm 3\%$ (1σ) for isoprene and $\pm 8\%$ for both α - and β -pinene. The uncertainty of the calibration factor, $\%e_{\text{cal}}$, ranged from 5% for isoprene to 12% for α -pinene and β -pinene. The uncertainty in the accumulated volume, $\%e_{\text{vol}}$, was determined to be 4% (see later). The total propagated relative uncertainty in the masses of species accumulated $\%e_{\text{conc}}$, was calculated as 9% for isoprene, 13% for α -pinene and 17% for β -pinene.

The uncertainty in the overall flux in any scalar measured by DEA can also be calculated and is given by the propagation of errors in the five individual components that make up Eq. (7). These are the uncertainty in the determined density of scalar in the updraft tube, (c^+), the downdraft tube, (c^-), the mass of these scalars in the volume collected as updrafts or downdrafts (c_v^+ and c_v^-), the mean vertical wind (\bar{w}_{disj}) and mean scalar density (\bar{c}_{disj}) of the disjunctly sampled points. Combining Eqs. (7) and (8)

A disjunct eddy accumulation system for the measurement of BVOC fluxes

G. D. Edwards et al.

[Title Page](#)[Abstract](#)[Introduction](#)[Conclusions](#)[References](#)[Tables](#)[Figures](#)[◀](#)[▶](#)[◀](#)[▶](#)[Back](#)[Close](#)[Full Screen / Esc](#)[Printer-friendly Version](#)[Interactive Discussion](#)

we see that this uncertainty, e_{Flux} , is given by:

$$e_{\text{Flux}} = \left(\left[\left(\frac{|\overline{W}_{\text{disj}}| C_V^+}{2} \right) \sqrt{(\%e_{w,\text{disj}})^2 + (\%e_{C_V^+})^2} \right]^2 + \left[\left(\frac{|\overline{W}_{\text{disj}}| C_V^-}{2} \right) \sqrt{(\%e_{w,\text{disj}})^2 + (\%e_{C_V^-})^2} \right]^2 + \left[\left(\frac{\overline{W}_{\text{disj}} C^+}{2} \right) \sqrt{(\%e_{w,\text{disj}})^2 + (\%e_{C^+})^2} \right]^2 + \left[\left(\frac{\overline{W}_{\text{disj}} C^-}{2} \right) \sqrt{(\%e_{w,\text{disj}})^2 + (\%e_{C^-})^2} \right]^2 + \left[\overline{W}_{\text{disj}} \overline{C}_{\text{disj}} \sqrt{(\%e_{w,\text{disj}})^2 + (\%e_{\overline{C}_{\text{disj}}})^2} \right]^2 \right)^{\frac{1}{2}} \quad (9)$$

Uncertainties in the flux measurements associated with the solution of Eq. (9) averaged $\pm 35\%$ for isoprene fluxes and $\pm 56\%$ for monoterpenes.

4 Field characterizations

During summer 2009, the DEA sampler system was mounted at the 26.6 m level of the walk-up PROPHET tower located at the UMBS site (Carroll et al., 2000). The canopy height was, on average, 24 m. Just over a month prior to the start of the CABINEX campaign in July 2009, the sonic anemometer was mounted on the tower, so that representative wind conditions (i.e., a wide range of azimuth angles, wind speeds, and atmospheric stability) could be sampled. From data collected in May and June 2009, an apparent correlation between the horizontal wind components and the vertical wind was observed, indicating the measurements were biased by a non-level anemometer, uneven terrain, or flow disturbances around the tower. The effect of “no-level” bias in the sonic anemometer data has been shown to cause errors in the calculated flux (Rinne et al., 2000; Turnipseed et al., 2009). Using these data and based on the recommendations of Turnipseed et al. (2009) an applied 3×3 matrix was used to virtually rotate

A disjunct eddy accumulation system for the measurement of BVOC fluxes

G. D. Edwards et al.

Title Page

Abstract

Introduction

Conclusions

References

Tables

Figures

◀

▶

◀

▶

Back

Close

Full Screen / Esc

Printer-friendly Version

Interactive Discussion



A disjunct eddy accumulation system for the measurement of BVOC fluxes

G. D. Edwards et al.

Title Page

Abstract

Introduction

Conclusions

References

Tables

Figures

⏪

⏩

◀

▶

Back

Close

Full Screen / Esc

Printer-friendly Version

Interactive Discussion



the anemometer data into the mean streamline, according to the “Planar Fit” method (Wilczak et al., 2001). The “Planar Fit” method uses an ensemble of wind measurements assumed to be representative of a broad range of azimuth wind angles, wind speeds, and stability conditions to define a plane. A multiple linear regression is then used to find the best-fit plane that is representative of the mean streamline, and the transformed vertical wind direction (w_T) is defined perpendicular to this plane. The coordinate rotation algorithm reduced the correlations such that coupling between the vertical and horizontal wind was removed (correlation coefficient < 0.1).

During this period the “stationarity” of the location of the DEA instrument was also investigated. As described in the overview by Mahrt (1998), almost all atmospheric tower based measurements are subject to nonstationary or inhomogeneous conditions to some degree. A practical estimate of the overall flux sampling error owing to inhomogeneous conditions can be constructed in terms of the record of flux between the beginning of the disjunct sampling time and a reference point within the disjunct sample period. Grossman (1992) showed that:

$$F_c(0, x) = \frac{1}{x_r} \sum_{x=0}^{x=x_r} w' c' \quad (10)$$

where x_r is the r th observational point during sampling and c is any transported scalar. The flux is then repeatedly computed by incrementally increasing x_r from some small value up to the length of the entire record to form a time series of $F_c(0, x_r)$. If errors are small, $F_c(0, x_r)$ converges to the record flux well before x approaches the end of that record. Using 10 Hz sonic anemometer data, sensible heat fluxes were calculated via the eddy covariance (EC) technique described by the solution of Eq. (1). Here, the scalar c' in Eq. (1) is replaced by temperature, T' (Pressley et al., 2006). Temperatures were calculated from the speed of sound in air data reported by the sonic anemometer. The averaging time was systematically increased from 15 min to the maximum sampling time for a DEA sample, 115 min. The data showed that sensible heat flux does converge quickly. Differences between F_c calculations for sensible heat flux

A disjunct eddy accumulation system for the measurement of BVOC fluxes

G. D. Edwards et al.

Title Page

Abstract

Introduction

Conclusions

References

Tables

Figures

⏪

⏩

◀

▶

Back

Close

Full Screen / Esc

Printer-friendly Version

Interactive Discussion

averaged over 115 min deviated by $< 5\%$ from the averages obtained by averaging over 15 min. Similar trends were observed in the sensible heat data taken during the July and early August during the main CABINEX campaign. Although these small differences in $F_c(0, x_r)$ do not rule out significant sampling errors owing to inhomogeneity at the instrument sampling height, these appear to be smaller than the uncertainty propagated via the solution of Eq. (9).

As described by Turnipseed et al. (2009), the selection of the maximum wind speed expected during a disjunct sampling period, w_{\max} , can be used to determine the maximum rate at which the cartridge traps are filled. Underestimation of w_{\max} can lead to the dispense cycle being terminated prematurely, thereby causing some sample volume to be “missed”. If w_{\max} is set too large, only small sample volumes and thus, scalar densities are collected. This may make determination of BVOC concentrations less reliable. During CABINEX, w_{\max} was set according to the maximum predicted vertical wind speed for that hour, which was chosen to be 3σ of the vertical wind speeds measured during the previous hour. This calculation is performed automatically by the sampling computer which then adjusts the maximum sampling time as turbulent eddies vary during the day. If $w_{\text{disj}} > w_{\max}$, the DEA sampler cartridges were filled for a default period of 20 s (the maximum sample time available).

Similarly, w_{\min} , the minimum vertical wind determined to be an actual eddy was also determined. The use and impact of this dead-band threshold in REA measurements has been well documented (e.g., Oncley et al., 1993; Bowling et al., 1999; Ammann and Meixner, 2002; Ren et al., 2011), but the application has not been applied to the few DEA measurements so far reported (Rinne et al., 2000, 2002; Turnipseed et al., 2009). Our sampler therefore differs from the methodologies described to date, and we must then assess the impact on the calculated fluxes. For example, if w_{\min} is too conservative, this could lead to sampling of sonic anemometer noise and collection of disjunct samples that are not truly representative of the turbulent flux. If w_{\min} is too large, small eddies typically observed during calm periods (e.g., early morning or late afternoon) could be “missed”. Bowling et al. (1999) showed that for an REA

A disjunct eddy accumulation system for the measurement of BVOC fluxes

G. D. Edwards et al.

Title Page

Abstract

Introduction

Conclusions

References

Tables

Figures

⏪

⏩

◀

▶

Back

Close

Full Screen / Esc

Printer-friendly Version

Interactive Discussion



sampler, using a dead-band threshold that was allowed to change between sampling periods, but remained constant over that period could significantly improve capture of flux. The authors concluded that using this “moving threshold” provided good estimates of flux obtained via REA when compared to EC flux measurements. Consequently, a threshold of $2\sigma/3$ (0.66σ) of the previous hour’s vertical wind for the data described here.

The reasons for using this value were twofold. The discontinuous nature of DEA allows for traceable mass flow control for each sample as it is taken, and precise knowledge of the sample volume for the scalar being examined is necessary. However, errors can be introduced into the determination of scalar density based on the ability of the MFC to deliver precise target volumes, especially over short sample times. Experiments were performed by manually varying the sample time at a constant flow rate of 200.00 sccm and comparing the actual (integrated flow rate) volume to the target (calculated) volume as a function of sample time. The results are shown in Fig. 2. Figure 2 shows when the ISR valves are opened, deviations in the flow rate are initially observed due to changes in pressure upstream of the MFC. This error is only of concern at short dispense times, i.e., small w_{disj} values, and the flow rate returns to the set point within ca. 3 s. Thus, at longer dispense times (i.e., larger w_{disj} values), the uncertainty in the flow is integrated away and delivery volume evens out to be within 4% of the target. The sample time threshold (which can be converted to minimum wind speed threshold) can then be defined as the time where this relative error becomes adequately small.

To ensure that no pressure transients were likely to impact the determined volume, a conservative threshold that eliminated all sample times of ≤ 3.0 s was used in CABINEX. To examine how this sample time translated into a detected vertical wind, the 34 days of vertical wind data taken prior to the start of the CABINEX campaign was examined. It was found, on average, DEA cycles with dispense times ≤ 3.0 s occurred infrequently ($\leq 10\%$ on the time) if w_{min} was set to 0.66σ of the previous hours average vertical wind. If w_{disj} was lower than this value, the vertical wind was still recorded by the computer software but the computer did not open the valves to sample the

A disjunct eddy accumulation system for the measurement of BVOC fluxes

G. D. Edwards et al.

Title Page

Abstract

Introduction

Conclusions

References

Tables

Figures

⏪

⏩

◀

▶

Back

Close

Full Screen / Esc

Printer-friendly Version

Interactive Discussion

corresponding eddy and it did not contribute to the accumulated sample volume. Using these thresholds, the DEA sampler acquired over 6000 samples in the CABINEX campaign. 44.2 % of the samples were detected as updrafts and 43.6 % were downdrafts. For the remaining 12.2 % of the samples, the vertical wind was below the w_{\min} threshold. Recorded winds larger than w_{\max} took place infrequently, and this “under sampling” occurred in only 2.5 % of the samples taken during CABINEX. The delivered volume to each cartridge ranged from 112 cm³ to 3159 cm³ with a mean sample volume of 1245 cm³.

Using these thresholds does lead to the potential for accumulated sample volumes significantly less than those that would be accumulated if all eddies were sampled. Although the times where $w_{\text{disj}} < w_{\min}$ were infrequent, the small eddies associated with these small vertical winds are still part of the flux. By not sampling them, the difference between the updraft scalar and the downdraft scalar (ΔC) could be artificially large (Pattey et al., 1993). In REA instruments this is compensated for by adjusting a dimensionless, empirical coefficient b used to calculate REA flux. Usually, this is achieved by conditionally sampling at 10 Hz wind/temperature data to derive the b coefficient with the same threshold used as when sampling/accumulating at valve speeds < 10 Hz (e.g., Bowling et al., 1999; Ammann and Meixner, 2002). As no such empirical correction coefficients are used in the calculation of DEA flux, we assume no correction factor is needed.

To test this hypothesis, 10 Hz sonic anemometer wind/temperature data were analyzed with simulated DEA sampling. This enabled both estimations of the effect of the dead-band on ΔC and also, whether using a dead-band creates the need for an empirical correction in the DEA flux (Turnipseed, 2012). First, data were considered where all eddies were used to calculate the simulated accumulation volumes. These data were then compared to cases where w_{\min} thresholds of, 0.25σ , 0.33σ , 0.50σ , 0.66σ , 1σ and 1.50σ were applied to the data thus, eliminating smaller eddies from the calculation. Comparing these simulations, using a threshold value w_{\min} does lead to a larger concentration difference between the updraft and downdraft reservoirs (ΔC),

A disjunct eddy accumulation system for the measurement of BVOC fluxes

G. D. Edwards et al.

Title Page

Abstract

Introduction

Conclusions

References

Tables

Figures

⏪

⏩

◀

▶

Back

Close

Full Screen / Esc

Printer-friendly Version

Interactive Discussion



but the difference is small relative to the size of the total sample volume. This is similar to the findings of Bowling et al. (1993). For example, using the threshold of 0.25σ , the simulated total volume differed by 2.3 % while the difference was 26.2 % when threshold was set to 1.50σ . For the threshold of 0.66σ used in CABINEX, the total volumes differed by 11.1 %.

Simulated fluxes were also determined for the various thresholds. As the sonic anemometer reports the vertical wind even when no sample is taken ($w_{\text{disj}} < w_{\text{min}}$), the effect on flux can be calculated for cases where, all w values are included, or, where some values of w are rejected (assuming delivery by the MFC of a consistent target volume for the shortest sampling times). Here, 10 Hz sonic anemometer data were used to simulate disjunct sampling/accumulation of sonic anemometer wind/temperature data to compute the change in sensible heat flux for cases where the small eddies are both included in the calculation and then, are eliminated by application of the various dead-bands. The data comparison again shows that only small corrections are necessary for most thresholds. The flux difference ranged from 1.9 % where $w_{\text{min}} = 0.25\sigma$, to 23.2 % for a 1.50σ threshold. The 0.66σ threshold used in CABINEX saw a difference of 8.6 %. As shown previously, this difference is small compared to the total flux uncertainty. Considering all these data, we conclude that for environment of the CABINEX campaign at least, a threshold value of 0.66σ does not significantly alter the determined flux as the vertical winds eliminated by the application of this dead-band seem to be too small to contribute significantly to the overall flux. In fact, the difference are smaller than the concentration uncertainty associated the species investigated here (e.g., $\pm 9\%$ for isoprene).

5 Isoprene concentrations and fluxes during CABINEX

Due to limitations on the number of sample cartridges, daily continuous DEA measurement was not possible. Instead, the campaign was broken up into eight DEA sampling “intensives”, conducted between 9 July and 4 August 2009, with gaps of several days

in between to allow for sample analysis and regeneration of the cartridge traps. Prior to beginning each intensive, the DEA sampler was calibrated and blank samples were acquired. Calibrations performed in the field showed little difference in GC-FID sensitivity and little to day-to-day variation between slopes of calibration curves observed.

5 During CABINEX the instrument had a calculated limit of detection of 15 pptv with an instrument precision of 3%. Each cartridge was analyzed within four days of collection.

Figure 3 shows the isoprene concentrations measured during each day of the CABINEX intensives. Isoprene has a distinct diurnal profile, with isoprene concentrations rising to a maximum in the mid afternoon, as previously observed by several authors (Edwards et al., 2007; Apel et al., 2001; Westberg et al., 2001). The mean, midday (10:00–14:00 local time) isoprene concentration was 2.09 (± 0.19) ppb. These data compare to median isoprene concentrations of 1.96 (± 0.43) ppb made reported during the PROPHET 1998 experiment at this site (Apel et al., 2001). The maximum observed isoprene concentration was 4.22 ppbv, with a minimum value of 0.45 ppbv, although no isoprene measurements were taken at night when isoprene concentrations are typically much lower (e.g., Edwards et al., 2007). Also shown in Fig. 3 are the error bars associated with each calculated isoprene concentration average following the solution of Eq. (8). As described above this was determined to be 9% for isoprene. Figure 4 shows the corresponding isoprene fluxes and associated uncertainties for each of the intensives. Data show a distinct diurnal profile with a positive, or net upward flux observed in all data. Fluxes are low during the early morning before a steady increase. Isoprene fluxes are maximum in the mid afternoon. The maximum observed isoprene flux was $3.62 \text{ mgm}^{-2} \text{ h}^{-1}$, with a minimum value of $0.27 \text{ mgm}^{-2} \text{ h}^{-1}$. The median isoprene flux was $1.31 \text{ mgm}^{-2} \text{ h}^{-1}$. These values are within the range of daytime measurements of $1.0 \text{ mgm}^{-2} \text{ h}^{-1}$ to $12.0 \text{ mgm}^{-2} \text{ h}^{-1}$ previously reported at this (Westberg et al., 2001). As described above, the propagated uncertainty in the DEA isoprene flux was, on average $\pm 35\%$. The largest uncertainty determined in these data was $\pm 70\%$, and the minimum was $\pm 16\%$. Uncertainties were typically larger during times when isoprene concentrations were small, e.g., during the early morning or late afternoon.

A disjunct eddy accumulation system for the measurement of BVOC fluxes

G. D. Edwards et al.

Title Page

Abstract

Introduction

Conclusions

References

Tables

Figures

⏪

⏩

◀

▶

Back

Close

Full Screen / Esc

Printer-friendly Version

Interactive Discussion



6 Comparison to sensible heat flux, H

Although the magnitude of the correlation between isoprene fluxes and energy fluxes varies from one day to the next, Pressley et al. (2006) showed that longer term averages suggest strong linear correlations between isoprene fluxes and energy fluxes at this site. These correlations were also observed by Rinne et al. (2002) during DEA measurements of BVOC fluxes in the Amazon. Similarly, it has been shown by Westberg et al. (2001) that the diurnal pattern of H is almost identical to the diurnal pattern of isoprene flux. This is due to the biosphere-atmosphere exchange of energy being driven by environmental parameters that also drive isoprene emissions (temperature and solar radiation). Likewise, canopy dynamics also affect both energy and isoprene exchange. Sensible heat fluxes were calculated and averaged to the same time period as DEA isoprene flux measurements allowing direct comparison between these two variables. Linear regression of isoprene fluxes vs. H for the whole campaign and is shown in Fig. 5. These data show slope of 8.95×10^{-3} , with an R^2 of 0.796 during CABINEX, compared to Presley et al. (2006), who reported an average slope of 1.32×10^{-2} ($\pm 5.93 \times 10^{-3}$, $R^2 = 0.884$). A close correlation between these data suggest that, over a wide range of ambient conditions during CABINEX, the DEA instrument was able to capture the major environmental parameters that drive isoprene emissions and exchange between the canopy and the atmosphere.

7 Comparison to isoprene emission models

Guenther et al. (1991, 1993) showed that isoprene emission can be quantified via:

$$I = I_S \times C_L \times C_T \quad (11)$$

Here, I is the isoprene emission rate at ambient temperature (T) and photosynthetically active radiation flux (PAR). I_S is the base emission rate (grams carbon as isoprene per gram dry leaf mass per hour) at a standard temperature of 30°C and PAR flux

A disjunct eddy accumulation system for the measurement of BVOC fluxes

G. D. Edwards et al.

Title Page

Abstract

Introduction

Conclusions

References

Tables

Figures

◀

▶

◀

▶

Back

Close

Full Screen / Esc

Printer-friendly Version

Interactive Discussion



of $1000 \text{ mol m}^{-2} \text{ s}^{-1}$. C_L and C_T are environmental adjustment functions for PAR and temperature, respectively. The factor C_L is a function of the PAR flux, and is defined as:

$$C_L = \frac{\alpha C_{L1} \text{PAR}}{\sqrt{1 + \alpha^2 \text{PAR}^2}} \quad (12)$$

5 The value $\alpha = 0.0027$ and $C_{L1} = 1.066$, are empirical constants derived by Guenther et al. (1993) by fitting the above expression to measured emission rates. The temperature dependence of isoprene emissions is controlled by the factor C_T , which is defined in Eq. (12) and has been used to describe the temperature response of enzymatic activity (Guenther et al., 1993).

$$10 \quad C_T = \frac{\exp \frac{C_{T1}(T-T_s)}{RT_s T}}{1 + \exp \frac{C_{T2}(T-T_m)}{RT_s T}} \quad (13)$$

Here, T is the leaf temperature, R is the ideal gas constant ($8.31 \text{ J mol}^{-1} \text{ K}^{-1}$), $C_{T1} = 95 \text{ kJ mol}^{-1}$, $C_{T2} = 230 \text{ kJ mol}^{-1}$, and $T_m = 314 \text{ K}$; the values of these coefficients were determined by Guenther et al. (1993) by fitting to experimental data. T_s is a standard temperature, 303 K . Data for PAR were obtained from in situ measurements made by the University of Houston (Lefer, 2012), while temperature data were also recorded as part of the meteorological dataset (Bertman et al., 2012). These data were averaged to the same time base as the DEA data (55 min) and represent the midpoint of that averaging period. Comparison of the estimated isoprene flux via this algorithm and the isoprene flux measured by DEA is shown in Fig. 6. The data suggest that the measured DEA isoprene flux is comparable to the algorithms described by Guenther et al. (1993) both in profile and peak flux. Although the emission algorithm does over-predict the averaged flux by 27 %, this over-prediction is within the 1σ uncertainty of the measured data and could also be due to other factors, e.g., canopy shading that were not accounted for.

A disjunct eddy accumulation system for the measurement of BVOC fluxes

G. D. Edwards et al.

Title Page

Abstract

Introduction

Conclusions

References

Tables

Figures

⏪

⏩

◀

▶

Back

Close

Full Screen / Esc

Printer-friendly Version

Interactive Discussion



8 Monoterpene concentrations and fluxes during CABINEX

Concentrations and fluxes of the individual monoterpenes α -pinene and β -pinene were also measured using DEA during the CABINEX campaign. There were six intensives for which there were measurable concentrations of these species, as shown in Fig. 7.

5 Unlike isoprene, no definitive diurnal profile was observed during the daytime sampling, and concentrations were several orders of magnitude smaller than for isoprene. In order to capture the low concentrations of monoterpenes at this field site that is dominated by isoprene-emitting trees, it was necessary to extend the DEA sampling period to 115 min. No terpenes were quantified during the first few CABINEX intensives, in which the sampling times were typically 55 min. This accumulation period was
10 insufficient to preconcentrate enough monoterpenes to be statistically significantly different from the blank chromatogram. No other monoterpene species were successfully quantified in this campaign as the concentrations of these species were either not significantly different from blanks or no calibration standard was available. For these longer sampling time periods, α -pinene was always above the detection limit (15 pptv),
15 whereas in only 18 of the 25 samples β -pinene showed concentrations above the detection limit. Hence, in Fig. 7, for some of the measurement periods, we report concentrations of α -pinene but not the corresponding concentration of β -pinene. The concentrations observed during CABINEX ranged from a maximum of 67.4 (± 8.8) pptv for α -pinene and 33.3 (± 5.7) pptv for β -pinene to a minimum of 30.2 pptv for α -pinene and 15.3 (± 3.5) pptv for β -pinene. Median concentrations were 48.6 (± 6.8) pptv and 27.2 (± 7.2) pptv for α - and β -pinene, respectively.
20

For UMBS, Kim et al. (2009) previously reported concentrations of total mono- and sesquiterpenes using data taken via PTR-MS during summer 2005. Data showed
25 an average total monoterpene concentration of ~ 200 pptv. Similarly, an average total monoterpene concentration of ~ 170 pptv was reported during the summer 2008 PROPHET study by Mielke et al. (2010) using a proton transfer reaction linear ion trap mass spectrometer. Speciated monoterpene measurements at this field site have

AMTD

5, 2703–2746, 2012

A disjunct eddy accumulation system for the measurement of BVOC fluxes

G. D. Edwards et al.

Title Page

Abstract

Introduction

Conclusions

References

Tables

Figures

⏪

⏩

◀

▶

Back

Close

Full Screen / Esc

Printer-friendly Version

Interactive Discussion

A disjunct eddy accumulation system for the measurement of BVOC fluxes

G. D. Edwards et al.

Title Page

Abstract

Introduction

Conclusions

References

Tables

Figures

◀

▶

◀

▶

Back

Close

Full Screen / Esc

Printer-friendly Version

Interactive Discussion



been infrequently reported in the literature. Branch enclosure measurements made by Ortega et al. (2007) showed that the dominant light-dependent monoterpene emitted from all deciduous species was trans-ocimene with conifers emitting α -pinene, β -pinene, camphene, d-limonene, and para-cymene among other monoterpenes. Kim et al. (2009) reported speciated monoterpenes from canister measurements taken in their 2005 study. The monoterpene budget was determined to be made up of primarily α - and β -pinene (33% and 28%, respectively) with average concentrations of these monoterpenes being reported as 60 pptv for α -pinene and 50 pptv for β -pinene. All of these literature data are in close agreement, if slightly larger than those measured by DEA in the 2009 CABINEX campaign.

The control of monoterpene emissions at this site seems to be strongly linked with temperature, as predicted by Guenther et al. (1993). Also shown in Fig. 7 is the temperature profile over the disjunct accumulation time of 115 min. Although ambient temperatures during CABINEX were generally lower than those previously recorded at UMBS (Bertman et al., 2012) and some days showed little diurnal variation, there is quite close correlation between the variations in the temperature diurnal profiles and the corresponding monoterpene concentrations as measured by DEA. This is most clearly shown in Fig. 7c and h. This lends confidence that the DEA method was able to capture the changes in the driving force for ambient monoterpene emission.

Figure 8 shows α - and β -pinene fluxes at the CABINEX site as well as temperature data associated with these fluxes included for reference. As described previously, for some cartridges it was not possible to distinguish the β -pinene peak, hence the absence of these data for times where α -pinene fluxes are reported. From Fig. 8, the speciated monoterpene flux shows that α -pinene fluxes were slightly greater than those of β -pinene. The maximum observed α -pinene flux was $64.9 \mu\text{g m}^{-2} \text{h}^{-1}$, with a minimum value of $10.2 \mu\text{g m}^{-2} \text{h}^{-1}$. The median α -pinene flux was $26.7 \mu\text{g m}^{-2} \text{h}^{-1}$. For β -pinene, maximum, minimum, and median fluxes were 21.8, 6.4, and $10.6 \mu\text{g m}^{-2} \text{h}^{-1}$, respectively. Figure 8 also shows the propagated uncertainty in the determined monoterpene flux. These uncertainties are much larger than for isoprene due to the very low

concentrations of monoterpenes measured during the campaign, combined with larger precision for the monoterpenes. The propagated uncertainty in the DEA terpene flux was, on average, $\pm 56\%$. The largest uncertainty determined in these data was $\pm 91\%$, while the minimum was $\pm 20\%$.

Ratios of α -pinene and β -pinene fluxes to isoprene flux were calculated. The data show that daytime fluxes of these monoterpenes were ~ 20 – 50 times less than those of isoprene, with almost no diurnal trend observed. Kim et al. (2009) reported the average daytime ratio between α -pinene + β -pinene flux and isoprene fluxes was 5.1% . This compares favorably to the value calculated by Ortega et al. (2007) of 4% based on branch enclosure measurements. Using the DEA data measured during CABINEX, this ratio was slightly lower than previously reported and was calculated as 2.8% , although the uncertainty associated with the ratio is large ($\pm 6\%$) and thus care needs to be used in the direct comparison of the data presented here with these previous measurements.

9 Comparison to 1-D atmospheric chemistry model

For comparison with the α -pinene and β -pinene concentrations and fluxes measured during CABINEX, a one-dimensional model was constructed to simulate the emission, transport, and reaction of 57 BVOCs at UMBS (Pratt et al., 2012), given the specified flux information from Ortega et al. (2007, 2008). Herein, we concentrate on the calculated emission rates and concentrations of α - and β -pinene on two mostly-sunny days: 21 July and 4 August 2009. The model consists of 26 vertically-spaced bins, including 2 bins within the forest canopy, from 12.1 m to 998 m above ground. Vertical transport of BVOCs following emission is described by thermal eddy diffusivity (K_H) profiles modeled by a modified version of the CACHE model (Forkel et al., 2006), driven by meteorology at the UMBS site for July–August 2009 (Bryan et al., 2012).

As discussed above, monoterpene emissions are primarily driven by temperature, which can be parameterized by a β -factor, measured for the different tree species at UMBS during branch-enclosure experiments; therefore, the diurnal fluxes of α -pinene

A disjunct eddy accumulation system for the measurement of BVOC fluxes

G. D. Edwards et al.

Title Page

Abstract

Introduction

Conclusions

References

Tables

Figures

⏪

⏩

◀

▶

Back

Close

Full Screen / Esc

Printer-friendly Version

Interactive Discussion



and β -pinene were calculated according to Guenther et al. (1993):

$$ER(T) = ER(T_s) * \exp \beta(T - T_s) \quad (14)$$

$ER(T_s)$ is the BVOC emission rate at a standard temperature of 303.15 K. Monoterpene emissions have been observed to vary considerably between individual trees (Ortega et al., 2008); therefore, in addition to the average calculated individual BVOC emission rates, minimum and maximum rates were calculated to account for this variability. Previous measurements of monoterpene β -factors showed an average value of 0.14 K^{-1} with inner-quartile ranges of $0.11\text{--}0.17 \text{ K}^{-1}$ (Ortega et al., 2008). Following the method of Ortega et al. (2007), BVOC production rates were calculated by dividing the BVOC fluxes by the height of the first canopy bin (8.8 m), which covers the majority of the leaf biomass at the site (Villani et al., 2003). Three production rate scenarios were constructed to examine the model sensitivity to BVOC emissions. As a base case, production rates were calculated considering the average emission rates and β -factors, as well as scaling monoterpenes by +57 % (possible underestimation due to average sampling loss of $\sim 30\%$ and measurement uncertainty of +27 %) (Ortega et al., 2007, 2008). Maximum production rates were calculated considering maximum emission rates, lower quartile β -factors, monoterpene scaling by +107 %, accounting for maximum estimated sampling losses of 80 %, in addition to measurement uncertainties (Ortega et al., 2008). Minimum production rates were calculated considering minimum emission rates, upper quartile β -factors, and monoterpene scaling by +10 % (underestimation due to minimum sampling loss) (Ortega et al., 2008).

Within the 1-D atmospheric chemistry model, α - and β -pinene were allowed to react with OH, O_3 , and NO_3 according to literature rate constants (Atkinson et al., 1997; Atkinson and Arey, 2003). Half hour average diurnal profiles of OH, O_3 , and NO_3 were utilized as inputs for oxidant concentrations. During CABINEX, OH concentrations were measured by the University of Indiana using the laser-induced fluorescence instrument described by Dusanter et al. (2009). O_3 was measured using a Thermo Environmental Instruments model 49C UV absorption ozone analyzer (Carroll, 2012). The half hour

A disjunct eddy accumulation system for the measurement of BVOC fluxes

G. D. Edwards et al.

Title Page

Abstract

Introduction

Conclusions

References

Tables

Figures

⏪

⏩

◀

▶

Back

Close

Full Screen / Esc

Printer-friendly Version

Interactive Discussion



resolution average diurnal profile of NO₃ radical concentrations was calculated using a simple box model, based on that described by Hurst et al. (2001).

Concentrations and fluxes measured by DEA were compared to model outputs for the sampling height for the two days in question. The comparisons of monoterpene concentrations are shown in Fig. 9, while Fig. 10 shows the comparison of measured fluxes and emission data. The model error bars are large owing to the large propagated uncertainty in the emission rates, showing the need for speciated flux measurements to reduce these uncertainties and further understand the associated chemistry. However when also taking into account the propagated uncertainties in these measured data (not show to maintain clarity), the measured data points are within the propagated uncertainties associated with the model results. This suggests that the emission rates used to parameterize the model are reasonable, and the measured data obtained by DEA are representative of the monoterpene fluxes at this site. During the 20 July comparison, averaged model α -pinene concentrations were 26.0 pptv during daylight hours, compared to a measured average of 61.5 pptv (± 8 pptv). Similarly for β -pinene, the model averaged 19.7 pptv compared to a measured concentration of 26.3 pptv (± 4.5 pptv) at the site. For data calculated on 4 August, average model α -pinene concentrations were 18.2 pptv compared to the DEA measured value of 39.3 pptv (± 5.1 pptv). For β -pinene, the model average was 13.2 pptv compared to a measured concentration of 27.2 pptv (± 4.5 pptv). Although both these days show model data lower than the measurements, the measured points still lie within the uncertainty of the model.

The calculated α -pinene emission rate was, on average, 13–18% of the total monoterpenes emissions (depending on the time of day). The associated lower and upper ranges were 11–16% and 15–22%, respectively. For β -pinene emission rates, the calculated average was 9–12% of total monoterpene emissions, ranging from 8–11% to 10–14% when accounting for emission uncertainties. Compared to monoterpene fluxes, as shown in Fig. 9, the model agreement is much better. For α -pinene, the model slightly underestimates the measured fluxes. Averaged

A disjunct eddy accumulation system for the measurement of BVOC fluxes

G. D. Edwards et al.

Title Page

Abstract

Introduction

Conclusions

References

Tables

Figures



Back

Close

Full Screen / Esc

Printer-friendly Version

Interactive Discussion



A disjunct eddy accumulation system for the measurement of BVOC fluxes

G. D. Edwards et al.

Title Page

Abstract

Introduction

Conclusions

References

Tables

Figures

⏪

⏩

◀

▶

Back

Close

Full Screen / Esc

Printer-friendly Version

Interactive Discussion

even further. Similarly, during field deployment, 12.2% of the time the vertical wind was below w_{\min} resulting in a “null sample”. The threshold of 0.66σ does not appear to have significantly altered the statistics of sampling enough to cause errors in the estimation of the flux, but it was also perhaps too conservative and smaller thresholds could be used while still eliminating where the problem of accurate sample volume determination. In addition, this “null sample” could be collected in a third sample tube that represents neither updrafts or down drafts and is analyzed in a similar way to the “active” tubes. Such collection methods are routinely employed on REA measurements (e.g., Christiansen et al., 2000; Graus et al., 2006; Turnipseed et al., 2009). However the current ISR and valve system would need to be modified to allow such sampling.

During this work the GC-FID detector provided high sensitivity for isoprene and some terpenes. However, other suitable detectors could be employed such as GC-MS based systems with the potential for multidimensional MSⁿ analysis that has the ability to determine both the parent ion and fragments of these ions. This analytical capability could be used in future experiments to detect other compounds of interest via DEA, such as the isoprene oxidation products. However; it is typically more difficult to achieve high precision with these detectors when compared to the FID. Although there are still developments and improvements possible in the DEA/TD-4/GC-FID detector, in its current configuration, this instrument has shown the potential of this method as a field-portable micrometeorological instrument for the fast and accurate measurement of atmospheric BVOC concentrations and fluxes.

Acknowledgement. The authors would like to thank Kimberly Hill Edwards, Steve Bertman, Mary Ann Carroll and the University of Michigan Biological Station for logistic support and all the CABINEX campaign participants for the free use of their data. The technical help of Detlev Helmig for use of emission data used to parameterize the model, Andrew Turnipseed with respect to the use of a dead-band threshold and its application to DEA and the Jonathan Amy Facility for Chemical Instrumentation at Purdue for construction of the sampler is greatly appreciated. The authors also would like to acknowledge the helpful comments of the several anonymous reviewers who have helped significantly improve the manuscript. This work was funded partly funded by Eastern Michigan University New Faculty “start-up” (Edwards), by

Eastern Michigan University Provosts Faculty Research Award (Edwards) and by NSF grant # 0904151. K. A. Pratt is grateful for funding from a NOAA climate & global change postdoctoral fellowship.

References

- 5 Andreae, M. O. and Crutzen, P. J.: Atmospheric aerosols: biogeochemical sources and role in atmospheric chemistry, *Science*, 76, 1052–1058, 1997.
- Arneeth, A., Monson, R. K., Schurgers, G., Niinemets, Ü., and Palmer, P. I.: Why are estimates of global terrestrial isoprene emissions so similar (and why is this not so for monoterpenes)?, *Atmos. Chem. Phys.*, 8, 4605–4620, doi:10.5194/acp-8-4605-2008, 2008.
- 10 Ammann, C. and Meixner, F. X.: Stability dependence of the relaxed eddy accumulation coefficient for various scalar quantities, *J. Geophys. Res.*, 107, 4071, doi:10.1029/2001JD000649, 2002.
- Apel, E. C., Riemer, D. D., Hills, A., Baugh, W., Orlando, J., Faloon, I., Tan, D., Brune, W., Lamb, B., Westberg, H., Carroll, M. A., Thornberry, T., and Geron, C. D.: Measurement and
15 interpretation of isoprene fluxes and isoprene, methacrolein, and methyl vinyl ketone mixing ratios at the PROPHET site during the 1998 intensive, *J. Geophys. Res.*, 107, 4034, doi:10.1029/2000JD000225 2002.
- Atkinson, R., Baulch, D. L., Cox, R. A., Hampson, R. F., Kerr, J. A., Rossi, M. J., and Troe, J.: Evaluated kinetic, photochemical and heterogeneous data for atmospheric chemistry. IU-PAC subcommittee on gas kinetic data evaluation for atmospheric chemistry, *J. Phys. Chem. Chem. Ref.*, 26, 1329, doi:10.1063/1.556048, 1997.
- 20 Baldocchi, D., Guenther, A., Harley, P., Klinger, L., Zimmerman, P., Lamb, B., and Westberg, H.: The fluxes and air chemistry of isoprene above a deciduous hardwood forest, *Philos. Trans. Roy. Soc.*, 351, 279–296, 1995.
- 25 Barkot, D. J., Hurst, J. M., Couch, T. L., Colorado, A., Shepson, P. B., Riemer, D. D., Hills, A. J., Apel, E. C., Hafer, R., Lamb, B. K., Westberg, H. H., Farmer, C. T., Stabenau, E. R., and Zika, R. G.: Intercomparison of automated methodologies for determination of ambient isoprene during the PROPHET 1998 summer campaign, *J. Geophys. Res.*, 106, 24301, doi:10.1029/2000JD900562, 2001.

A disjunct eddy accumulation system for the measurement of BVOC fluxes

G. D. Edwards et al.

Title Page

Abstract

Introduction

Conclusions

References

Tables

Figures

⏪

⏩

◀

▶

Back

Close

Full Screen / Esc

Printer-friendly Version

Interactive Discussion



A disjunct eddy accumulation system for the measurement of BVOC fluxes

G. D. Edwards et al.

[Title Page](#)[Abstract](#)[Introduction](#)[Conclusions](#)[References](#)[Tables](#)[Figures](#)[⏪](#)[⏩](#)[◀](#)[▶](#)[Back](#)[Close](#)[Full Screen / Esc](#)[Printer-friendly Version](#)[Interactive Discussion](#)

- Biesenthal, T. A., Wu, Q., Shepson, P. B., Wiebe, H. A., Anlauf, K., and Mackays, K.: Observations of anthropogenic inputs of the isoprene oxidation products methyl vinyl ketone and methacrolein to the atmosphere, *Atmos. Environ.*, 31, 2049, doi:10.1029/97GL01337, 1997.
- 5 Bertman, S. B., Carroll, M. A., Stevens, P., and Shepson, P. B.: Overview of the combined atmosphere-biosphere intensive experiment CABINEX, in preparation, 2012.
- Bergen, K. M. and Dronova, I.: Observing succession on aspen-dominated landscapes using a remote sensing-ecosystem approach, *Landscape Ecol.*, 22, 1395–1410, 2007.
- Bowling, D. R., Delany, A. C., Turnipseed, A. A., Baldocchi, D. D., and Monson, R. K.: Modification of the relaxed eddy accumulation technique to maximize measured scalar mixing ratio differences in updrafts and downdrafts, *J. Geophys Res.*, 104, 9121–9133, 1999.
- 10 Bryan, A. M., Bertman, S. B., Carroll, M. A., Dusanter, S., Edwards, G. D., Forkel, R., Griffith, S., Guenther, A. B., Hansen, R. F., Helmig, D., Jobson, T., Keutsch, F., Lefer, B., Pressley, S. N., Shepson, P. B., Stevens, P. S., and Steiner, A. L.: In-canopy gas-phase chemistry during CABINEX 2009: Sensitivity of a 1-D canopy model to vertical mixing and isoprene chemistry, *Atmos. Chem. Phys.*, submitted, 2012.
- 15 Calogirou, A., Larsen, B. R., Brussol, C., Duane, M., and Kotzias, D.: Decomposition of terpenes by ozone during sampling on Tenax, *Anal. Chem.*, 68, 1499–1506, 1996.
- Carroll, M. A., Bertman, S. B., and Shepson, P. B.: Overview of the Program for Research on Oxidants: PHotochemistry, Emissions, and Transport (PROPHET) summer 1998 measurements intensive, *J. Geophys Res.*, 106, 24275, doi:10.1029/2001JD900189, 2001.
- 20 Chamedies, W. L. and Walker, J. C. G.: A photochemical theory for tropospheric ozone, *J. Geophys. Res.*, 78, 8751–8760, 1973.
- Coeur, C., Jacob, V., Denis, I., and Foster, P.: Decomposition of alpha-pinene and sabinene on solid sorbents, Tenax TA and Carboxen, *J. Chromatogr. A*, 786, 185–187, 1997.
- 25 Clausen, P. A. and Wolkoff, P.: Degradation products of Tenax-TA formed during sampling and thermal desorption analysis: Indicators of reactive species indoors, *Atmos. Environ.*, 31, 715–725, 1997.
- Dettmer, K. and Engewald, W.: Adsorbent materials commonly used in air analysis for adsorptive enrichment and thermal desorption of volatile organic compounds, *Anal. Biol. Chem.*, 373, 490–500, 2002.
- 30 DiCarlo, P., Brune, W. H., Martinez, M., Harder, H., Lescher, R., Ren, X., Thornberry, T., Carroll, M. A., Young, V., Shepson, P. B., Riemer, D., and Apel, E.: Missing OH reactivity in a forest: evidence for unknown reactive biogenic VOCs, *Science*, 304, 722–725, 2004.

A disjunct eddy accumulation system for the measurement of BVOC fluxesG. D. Edwards et al.

[Title Page](#)[Abstract](#)[Introduction](#)[Conclusions](#)[References](#)[Tables](#)[Figures](#)[⏪](#)[⏩](#)[◀](#)[▶](#)[Back](#)[Close](#)[Full Screen / Esc](#)[Printer-friendly Version](#)[Interactive Discussion](#)

- Dusanter, S., Vimal, D., Stevens, P. S., Volkamer, R., and Molina, L. T.: Measurements of OH and HO₂ concentrations during the MCMA-2006 field campaign – Part 1: Deployment of the Indiana University laser-induced fluorescence instrument, *Atmos. Chem. Phys.*, 9, 1665–1685, doi:10.5194/acp-9-1665-2009, 2009.
- 5 Edwards, G. D., Shepson, P. B., Grossenbacher, J., Wells, J. M., Patterson, G. E., Barkett, D. J., Preesley, S., Karl, T., and Apel, E.: Development of an automated cylindrical ion trap mass spectrometer for the determination of atmospheric volatile organic compounds, *Anal. Chem.*, 79, 5040–5050, 2007.
- Fick, J., Pommer, L., Andersson, B., and Nilsson, C.: Ozone removal in the sampling of parts per billion levels of terpenoid compounds: An evaluation of different scrubber materials, *Environ. Sci. Technol.*, 35, 1458–1462, 2001.
- 10 Foken, T. and Wichura, B.: Tools for quality assessment of surface based flux measurements, *Agr. Forest Meteorol.*, 78, 83–105, 1996.
- Forkel, R., Klemm, O., Graus, M., Rappenglück, B., Stockwell, W. R., Grabmer, W., Held, A., Hansel, A., and Steinbrecher, R.: Trace gas exchange and gas phase chemistry in a Norway spruce forest: a study with a coupled 1-dimensional canopy atmospheric chemistry emission model, *Atmos. Environ.*, 40, 28–42, 2006.
- 15 Fuentes, J. D., Lerdau, M., Atkinson, R., Baldocchi, D., Bottenheim, J. W., Ciccioli, P., Lamb, B., Geron, C., Gu, L., Guenter, A., Sharkey, T. D., and Stockwell, W.: Biogenic hydrocarbons in the atmospheric boundary layer: a review, *B. Am. Meteorol. Soc.*, 1537, doi:10.1175/1520-0477(2000)081<1537:BHITAB>2.3.CO;2, 2000.
- 20 Fuentes, J. D., Hayden, B. P., Garstang, M., Lerdau, M., Fitzjarrald, D., Baldocchi, D. D., Monson, R., Lamb, B., and Geron, C.: New directions: VOCs and biosphere-atmosphere feedbacks, *Atmos. Environ.*, 35, 189–191, 2001.
- 25 Guenther, A. B., Monson, R. K., and Fall, R.: Isoprene and monoterpene emission rate variability – observations with eucalyptus and emission rate algorithm development, *J. Geophys. Res.*, 96, 10799–10808, 1991.
- Guenther, A. B., Zimmerman, P. R., Harley, P. C., Monson, R. K., and Fall, R.: Isoprene and monoterpene emission rate variability – model evaluations and sensitivity analyses, *J. Geophys. Res.*, 98, 12609–12617, 1993.
- 30 Guenther, A. B., Hewitt, C. N., Erickson, D., Fall, R., Geron, C., Graedel, T., Harley, P., Klinger, L., Lerdau, M., Mckay, W. A., Pierce, T., Scholes, B., Steinbrecher, R., Tallamraju, R.,

A disjunct eddy accumulation system for the measurement of BVOC fluxes

G. D. Edwards et al.

[Title Page](#)[Abstract](#)[Introduction](#)[Conclusions](#)[References](#)[Tables](#)[Figures](#)[⏪](#)[⏩](#)[◀](#)[▶](#)[Back](#)[Close](#)[Full Screen / Esc](#)[Printer-friendly Version](#)[Interactive Discussion](#)

Taylor, J., and Zimmerman, P. J.: A global-model of natural volatile organic-compound emissions, *J. Geophys. Res.*, 100, 8873, doi:10.1029/94JD02950, 1995.

Graus, M., Hansel, A., Wisthaler, A., Lindinger, C., Forkel, R., Haufl, K., Klauer, M., Pfichner, A., Rappengluck, B., Steigner, D., and Steinbrecher, R.: A relaxed-eddy-accumulation method for the measurement of isoprenoid canopy-fluxes using an online gas-chromatographic technique and PTR-MS simultaneously, *Atmos. Environ.*, 40, S43–S54, 2006.

Griffin, R. J., Cocker, D. R., Seinfeld, J. H., and Dabdub, D.: Estimate of global atmospheric organic aerosol from oxidation of biogenic hydrocarbons, *Geophys. Res. Lett.*, 26, 2421–2724, 1999.

Harrison, D., Hunter, M. C., Lewis, A. C., Seakins, P. W., Nunes, T. V., and Pio, C. A.: Ambient isoprene and monoterpene concentrations in a greek fir forest. reconciliation with emissions measurements and effects on measured OH concentrations, *Atmos. Environ.*, 35, 4687, doi:10.1016/S1352-2310(01)00091-7, 2001.

Grossman, R. L.: Sampling errors in the vertical fluxes of potential temperature and moisture measured by aircraft during FIFE, *J. Geophys. Res.*, 97, 18439–18443, 1992.

Helmig, D.: Ozone removal techniques in the sampling of atmospheric volatile organic trace gases, *Atmos Environ.* 31, 3636–3651, 1997.

Hicks, B. B. and McMillen, R. T.: A simulation of eddy accumulation method for measuring pollutant fluxes, *J. Clim. Appl. Meteorol.*, 23, 637–643, 1984.

Hurst, J. M., Barket, D. J., Herrera-Gomez, O., Couch, T. L., Shepson, P. B., Faloon, I., Tan, D., Brune, W., Westberg, H., Lamb, B., Biesenthal, T., Young, V., Goldstein, A., Munger, J. W., Thornberry, T., and Carroll, M. A.: Investigation of the nighttime decay of isoprene, *J. Geophys. Res.*, 106, 24335–24346, 2001.

Karl, T. G. and Guenther, A.: Atmospheric variability of biogenic vocs in the surface layer measured by proton-transfer-reaction mass spectrometry, *Int. J. Mass Spec.*, 239, 77–86, 2004.

Karl, T. G., Spirig, C., Rinne, J., Stroud, C., Prevost, P., Greenberg, J., Karl, T. G., Spirig, C., Rinne, J., Stroud, C., Prevost, P., Greenberg, J., Fall, R., and Guenther, A.: Virtual disjunct eddy covariance measurements of organic compound fluxes from a subalpine forest using proton transfer reaction mass spectrometry, *Atmos. Chem. Phys.*, 2, 279–291, doi:10.5194/acp-2-279-2002, 2002.

Kavouras, I. G., Mihalopoulos, N., and Stephanou, E. G.: Formation and gas/particle partitioning of monoterpenes photooxidation products over forests, *Geophys. Res. Lett.*, 26, 55–58, 1999.

A disjunct eddy accumulation system for the measurement of BVOC fluxes

G. D. Edwards et al.

[Title Page](#)[Abstract](#)[Introduction](#)[Conclusions](#)[References](#)[Tables](#)[Figures](#)[⏪](#)[⏩](#)[◀](#)[▶](#)[Back](#)[Close](#)[Full Screen / Esc](#)[Printer-friendly Version](#)[Interactive Discussion](#)

Kim, S., Karl, T., Helmig, D., Daly, R., Rasmussen, R., and Guenther, A.: Measurement of atmospheric sesquiterpenes by proton transfer reaction-mass spectrometry (PTR-MS), *Atmos. Meas. Tech.*, 2, 99–112, doi:10.5194/amt-2-99-2009, 2009.

Kesselmeier, J. and Staudt, M.: Biogenic volatile organic compounds (VOC): An overview on emission, physiology and ecology, *J. Atmos. Chem.*, 33, 23–88, 1999.

Kuhn, U., Andreae, M. O., Ammann, C., Araújo, A. C., Brancaleoni, E., Ciccioli, P., Dindorf, T., Frattoni, M., Gatti, L. V., Ganzeveld, L., Kruijt, B., Lelieveld, J., Lloyd, J., Meixner, F. X., Nobre, A. D., Pöschl, U., Spirig, C., Stefani, P., Thielmann, A., Valentini, R., and Kesselmeier, J.: Isoprene and monoterpene fluxes from Central Amazonian rainforest inferred from tower-based and airborne measurements, and implications on the atmospheric chemistry and the local carbon budget, *Atmos. Chem. Phys.*, 7, 2855–2879, doi:10.5194/acp-7-2855-2007, 2007.

Lee, A., Schade, G. W., Holzinger, R., and Goldstein, A. H.: A comparison of new measurements of total monoterpene flux with improved measurements of speciated monoterpene flux, *Atmos. Chem. Phys.*, 5, 505–513, doi:10.5194/acp-5-505-2005, 2005.

Lee, J. H., Batterman, S. A., Jia, C. R., and Chernyak, S.: Ozone artifacts and carbonyl measurements using Tenex GR, Tenex TA, Carboparck B, and Carbopack X adsorbents, *J. Air Waste Manage. Assoc.*, 56, 1503–1517, 2006.

Lenschow, D. H., Mann, J., and Kristensen, L.: How long is long enough when measuring fluxes and other turbulence statistics?, *J. Atmos. Ocean Tech.*, 11, 661–673, 1994.

Lindinger, W., Hansel, A., and Jordan, A.: On-line monitoring of volatile organic compounds at pptv levels by means of proton-transfer-reaction mass spectrometry (PTR-MS) – medical applications, food control and environmental research, *Int. J. Mass Spec.*, 173, 1230, doi:10.1016/S0168-1176(97)00281-4, 1998.

Loreto, F.: Emission of isoprenoids by plants: their role in atmospheric chemistry, response to the environment, and biochemical pathways, *J. Env. Path Toxicol. Oncol.*, 16, 119–124, 1997.

Makela, J. M., Aalto, P., Jokinen, V., Pohja, T., Nissinen, A., Palmroth, S., Markkanen, T., Seitsonen, K., Lihavainen, H., and Kulmala, M.: Observations of ultrafine aerosol particle formation and growth in boreal forest, *Geophys. Res. Lett.* 24, 1219–1222, 1997.

Martins, D.: Development of methods for measurement of biosphere-atmosphere exchange of carbon and nitrogen, Ph.D. Thesis, Purdue University, West Lafayette, IN, 2008.

A disjunct eddy accumulation system for the measurement of BVOC fluxes

G. D. Edwards et al.

Title Page

Abstract

Introduction

Conclusions

References

Tables

Figures

⏪

⏩

◀

▶

Back

Close

Full Screen / Esc

Printer-friendly Version

Interactive Discussion



- Mahrt, L.: Flux sampling errors for aircraft and towers, *J. Atmos. Ocean Tech.*, 15, 416, doi:10.1175/1520-0426(1998)015<0416:FSEFAA>2.0.CO;2, 1998.
- Mielke, L. H., Pratt, K. A., Shepson, P. B., McLuckey, S. A., Wisthaler, A., and Hansel, A.: quantitative determination of biogenic volatile organic compounds in the atmosphere using proton-transfer reaction linear ion trap mass spectrometry, *Anal. Chem.*, 82, 7952–7957, 2009.
- Oncley, S., Delany, A., Horst, T., and Tans, P.: Verification of flux measurement using relaxed eddy accumulation, *Atmos. Environ. A*, 27, 2417–2426, 1993.
- Ortega, J., Helmig, D., Guenther, A., Harley, P., Pressley, S., and Vogel, C.: Flux estimates and OH reaction potential of reactive biogenic volatile organic compounds (BVOCs) from a mixed northern hardwood forest, *Atmos. Environ.*, 41, 5479–5495, 2007.
- Ortega, J., Helmig, D., Daly, R. W., Tanner, D. M., Guenther, A. B., and Herrick, J. D.: Approaches for quantifying reactive and low-volatility biogenic organic compound emissions by vegetation enclosure techniques – Part B: Applications, *Chemosphere*, 72, 365–380, 2008.
- Pattey, E., Desjardins, R. L., and Rochette, P.: Accuracy of the relaxed eddy-accumulation technique, evaluated using CO₂ flux measurements, *Bound.-Layer Meteorol.*, 66, 341–355, 1993.
- Pollmann, J., Ortega, J., and Helmig, D.: Analysis of atmospheric sesquiterpenes: Sampling losses and mitigation of ozone interferences, *Environ. Sci. Tech.*, 39, 9620–9629 2005.
- Pressley, S., Lamb, B., Westberg, H., and Vogel, C.: Relationships among canopy scale energy fluxes and isoprene flux derived from long-term, seasonal eddy covariance measurements over a hardwood forest, *Agric. Forest Meteorol.*, 136, 188–202, 2006.
- Ren, X., Sanders, J. E., Rajendran, A., Weber, R. J., Goldstein, A. H., Pusede, S. E., Browne, E. C., Min, K.-E., and Cohen, R. C.: A relaxed eddy accumulation system for measuring vertical fluxes of nitrous acid, *Atmos. Meas. Tech.*, 4, 2093–2103, doi:10.5194/amt-4-2093-2011, 2011.
- Rinne, H. J. I., Delany, A. C., Greenberg, J. P., and Guenther, A. B.: A true eddy accumulation system for trace gas fluxes using disjunct eddy sampling method, *J. Geophys. Res.* 105, 24791–24798, 2000.
- Rinne, H. J. I., Guenther, A. B., Greenberg, J. P., and Harley, P. C.: Isoprene and monoterpene fluxes measured above amazonian rainforest and their dependence on light and temperature, *Atmos. Environ.*, 36, 2421–2426, 2002.

A disjunct eddy accumulation system for the measurement of BVOC fluxes

G. D. Edwards et al.

[Title Page](#)[Abstract](#)[Introduction](#)[Conclusions](#)[References](#)[Tables](#)[Figures](#)[⏪](#)[⏩](#)[◀](#)[▶](#)[Back](#)[Close](#)[Full Screen / Esc](#)[Printer-friendly Version](#)[Interactive Discussion](#)

- Shallcross, D. E. and Monks, P. S.: New directions: a role for isoprene in biosphereclimate-chemistry feedbacks, *Atmos. Environ.*, 34, 1659–1660, 2000.
- Shu, S. and Morrison, G.: Dynamic solid phase microextraction sampling for reactive terpenes in the presence of ozone, *Talanta*, 82, 1884–1891, 2010.
- 5 Simon, V., Riba, M., Waldhart, A., and Torres, L.: Breakthrough volume of monoterpenes on Tenax TA – influence of temperature and concentration for alpha-pinene, *J. Chrom. A*, 704, 465–471, 1995.
- Stearns, F. and Likens, G. E.: One hundred years of recovery of a pine forest in Northern Wisconsin, *Amer. Midland Nat.*, 148, 2–19, 2002.
- 10 Tani, A., Nozoe, S., Aoki, M., and Hewitt, C. N.: Monoterpene fluxes measured above a Japanese red pine forest at Oshiba Plateau, Japan, *Atmos. Environ.*, 36, 3391–3402, 2002.
- Turnipseed, A. A., Pressley, S. N., Karl, T., Lamb, B., Nemitz, E., Allwine, E., Cooper, W. A., Shertz, S., and Guenther, A. B.: The use of disjunct eddy sampling methods for the determination of ecosystem level fluxes of trace gases, *Atmos. Chem. Phys.*, 9, 981–994, doi:10.5194/acp-9-981-2009, 2009.
- 15 Villani, M. G., Schmid, H. P., Su, H.-B., Hutton, J. L., and Vogel, C. S.: Turbulence statistics measurements in a northern hardwood forest, *Bound.-Layer Meteorol.*, 108, 343–364, 2003.
- Warneke, C., Kato, S., De Gouw, J. A., Goldan, P. D., Kuster, W. C., Shao, M., Lovejoy, E. R., Fall, R. and Fehsenfeld, F. C.: Online volatile organic compound measurements using a newly developed proton-transfer ion-trap mass spectrometry instrument during New England Air Quality Study – Intercontinental Transport and Chemical Transformation 2004: Performance, intercomparison, and compound identification, *Environ. Sci. Tech.*, 39, 5390, doi:10.1021/es050602o, 2005.
- 20 Wang, J. L. and Chen W. L.: Construction and validation of automated purge-and-trap-gas chromatography for the determination of volatile organic compounds, *J. Chromatogr. A*, 927, 143–154, 2001.
- Westberg, H., Lamb, B., Hafer, R., Hills, A., Shepson, P. B., and Vogel, C.: Measurement of isoprene fluxes at the PROPHET site, *J. Geophys. Res.*, 106, 24347–24358, 2001.
- 30 Wilczak, J. M., Oncley, S. P., and Stage, S.: Sonic anemometer tilt correction algorithms, *Bound-Lay. Meteorol.*, 99, 127–150, 2001.
- Zhang, R., Suh, I., Clinkenbeard, A. D., Lei, W., and North, S. W.: Kinetic studies of OH-initiated reactions of isoprene, *J. Geophys. Res.*, 105, 24627–24635, 2000.

A disjunct eddy accumulation system for the measurement of BVOC fluxes

G. D. Edwards et al.

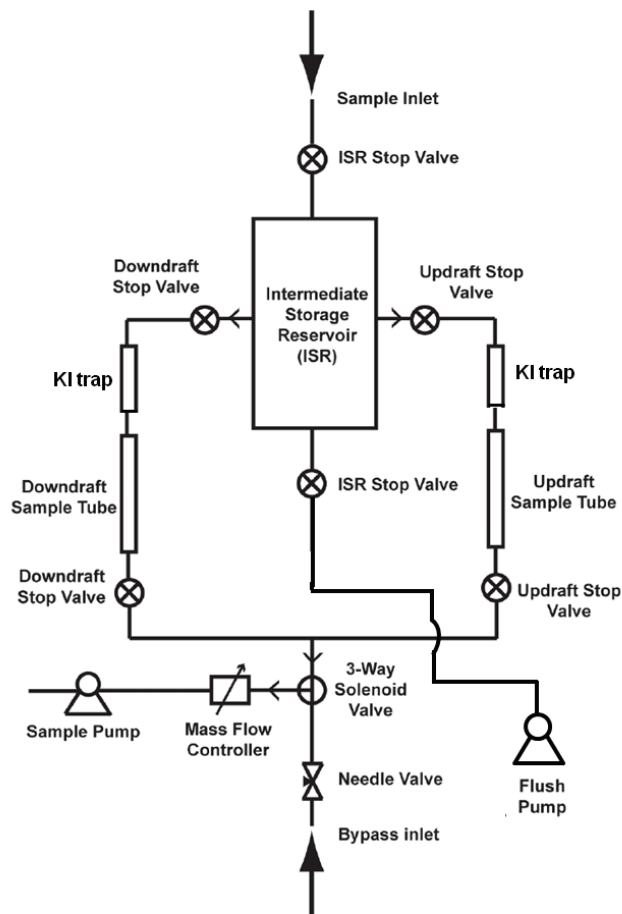


Fig. 1. Schematic diagram of the DEA sampling instrument.

Title Page

Abstract

Introduction

Conclusions

References

Tables

Figures

◀

▶

◀

▶

Back

Close

Full Screen / Esc

Printer-friendly Version

Interactive Discussion

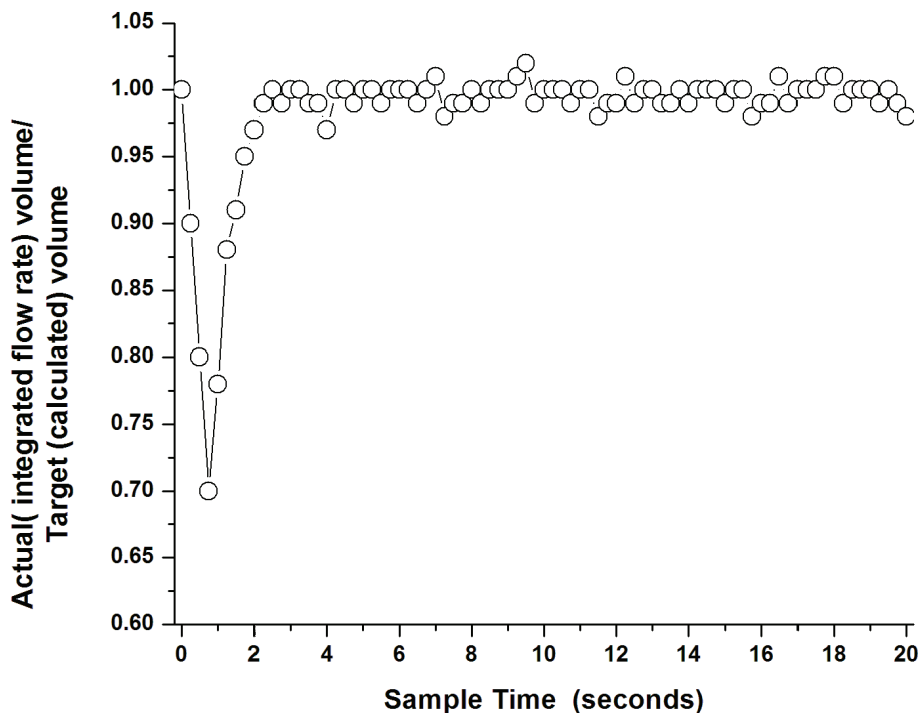


Fig. 2. Effect of pressure spikes upon opening the ISR sample valves on the ratio of actual flow rate/target flow rate. To eliminate these pressure spikes, values of w corresponding to sample times <3.0 s were not sampled. This conservative estimate resulted in the inclusion of a dead-band threshold in the DEA measurements but such a threshold has negligible effect on sample volumes accumulated or calculated flux (see text for details).

A disjunct eddy accumulation system for the measurement of BVOC fluxes

G. D. Edwards et al.

Title Page	
Abstract	Introduction
Conclusions	References
Tables	Figures
⏪	⏩
◀	▶
Back	Close
Full Screen / Esc	
Printer-friendly Version	
Interactive Discussion	



A disjunct eddy accumulation system for the measurement of BVOC fluxes

G. D. Edwards et al.

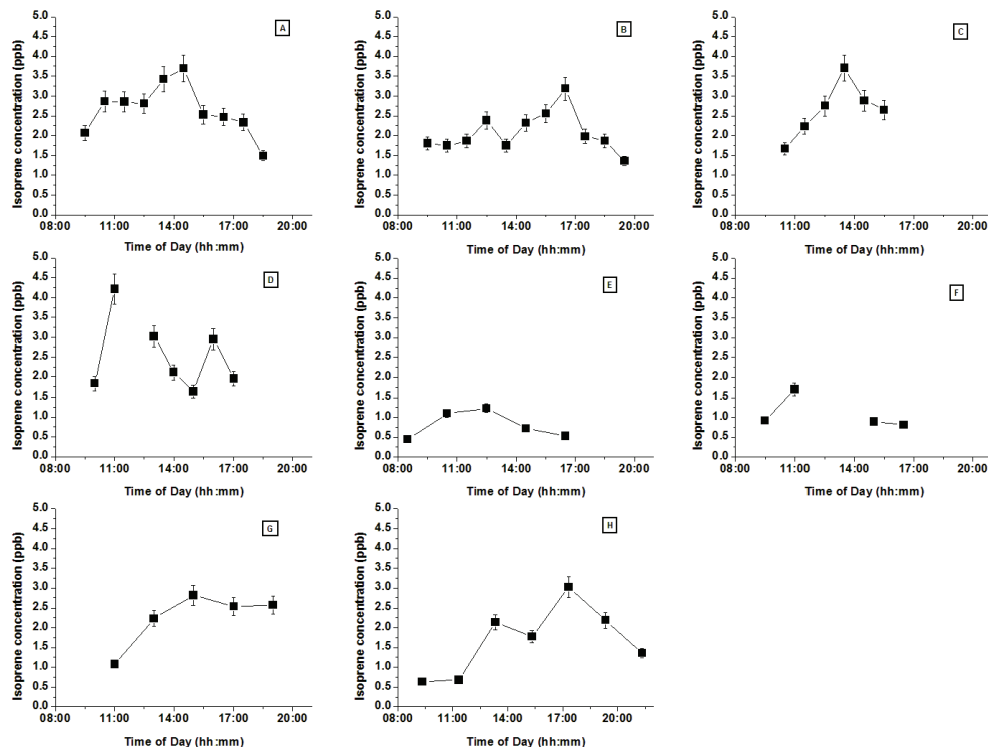


Fig. 3. Isoprene concentrations (in ppbv) measured during the 2009 CABINEX campaign via DEA. Data show daily isoprene concentrations during the eight intensives the DEA was deployed. Letters assigned to plots in Fig. 3 and all subsequent figures, represent the days of measurement: **(A)** = July, **(B)** = 14 July, **(C)** = 20 July, **(D)** = 21 July, **(E)** = 26 July, **(F)** = 30 July, **(G)** = 31 July, **(H)** = 4 August. Each data point represents the midpoint of the averaging period which ranged from 55 to 115 min. Error bars represent the propagated uncertainty in the derived concentration (see text for details).

[Title Page](#)
[Abstract](#)
[Introduction](#)
[Conclusions](#)
[References](#)
[Tables](#)
[Figures](#)
[◀](#)
[▶](#)
[◀](#)
[▶](#)
[Back](#)
[Close](#)
[Full Screen / Esc](#)
[Printer-friendly Version](#)
[Interactive Discussion](#)

A disjunct eddy accumulation system for the measurement of BVOC fluxes

G. D. Edwards et al.

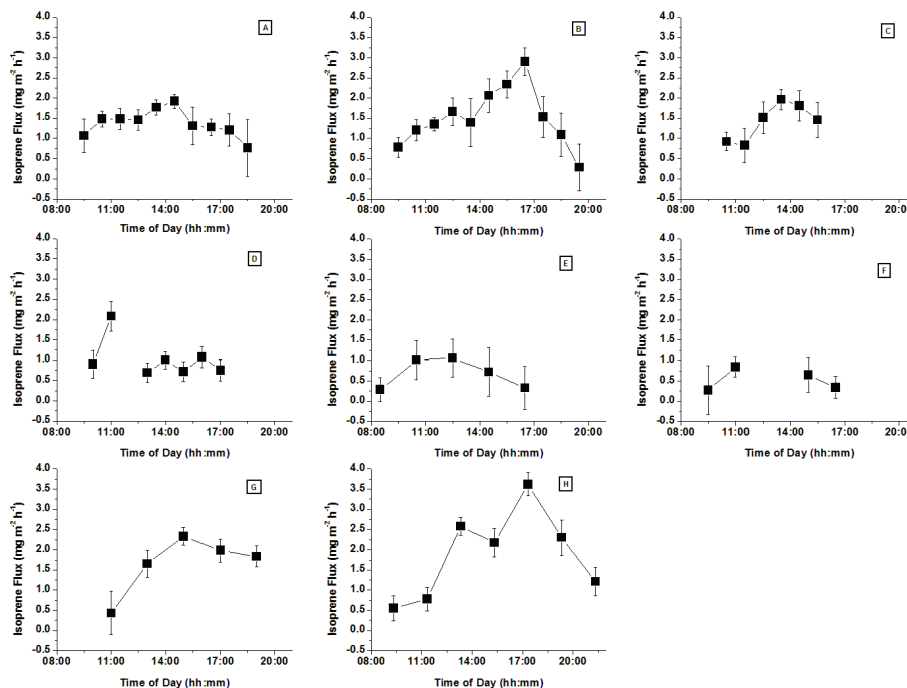


Fig. 4. Isoprene fluxes ($\text{mg m}^{-2} \text{h}^{-1}$) measured during the CABINEX 2009 campaign via DEA during the same eight intensives. Again, data represent time averages flux over the DEA measurement cycle and the tower footprint. Error bars represented the propagated uncertainty associated with each flux measurement data point.

[Title Page](#)[Abstract](#)[Introduction](#)[Conclusions](#)[References](#)[Tables](#)[Figures](#)[◀](#)[▶](#)[◀](#)[▶](#)[Back](#)[Close](#)[Full Screen / Esc](#)[Printer-friendly Version](#)[Interactive Discussion](#)

A disjunct eddy accumulation system for the measurement of BVOC fluxes

G. D. Edwards et al.

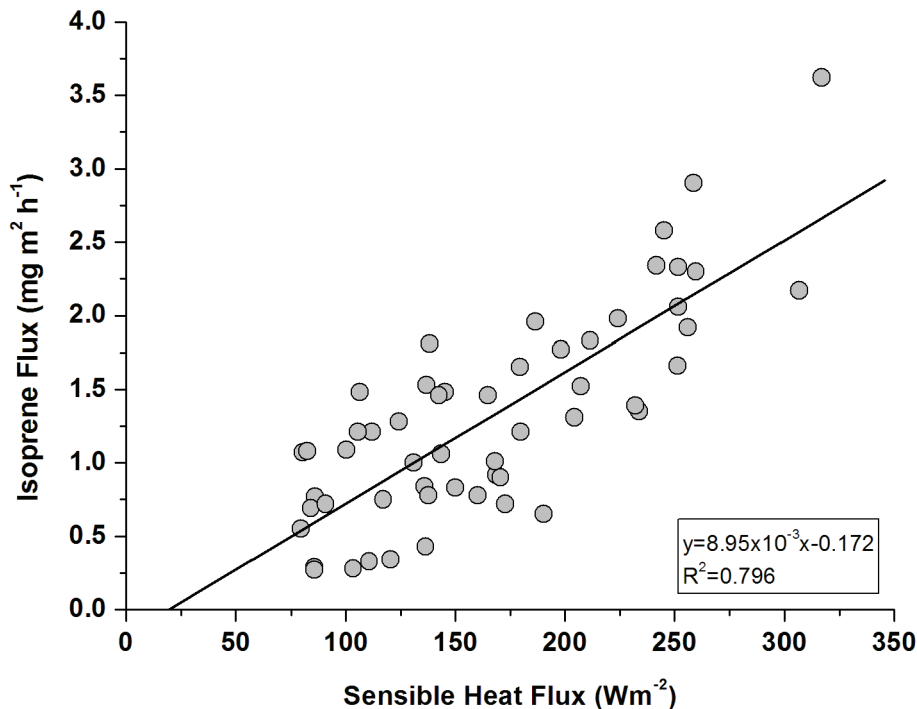


Fig. 5. Averaged isoprene fluxes for the whole CABINEX 2009 campaign versus the corresponding average sensible heat flux (W m^{-2}) derived from eddy covariance of sonic anemometer temperature data, averaged to DEA measurement times.

[Title Page](#)[Abstract](#)[Introduction](#)[Conclusions](#)[References](#)[Tables](#)[Figures](#)[⏪](#)[⏩](#)[⏴](#)[⏵](#)[Back](#)[Close](#)[Full Screen / Esc](#)[Printer-friendly Version](#)[Interactive Discussion](#)

A disjunct eddy accumulation system for the measurement of BVOC fluxes

G. D. Edwards et al.

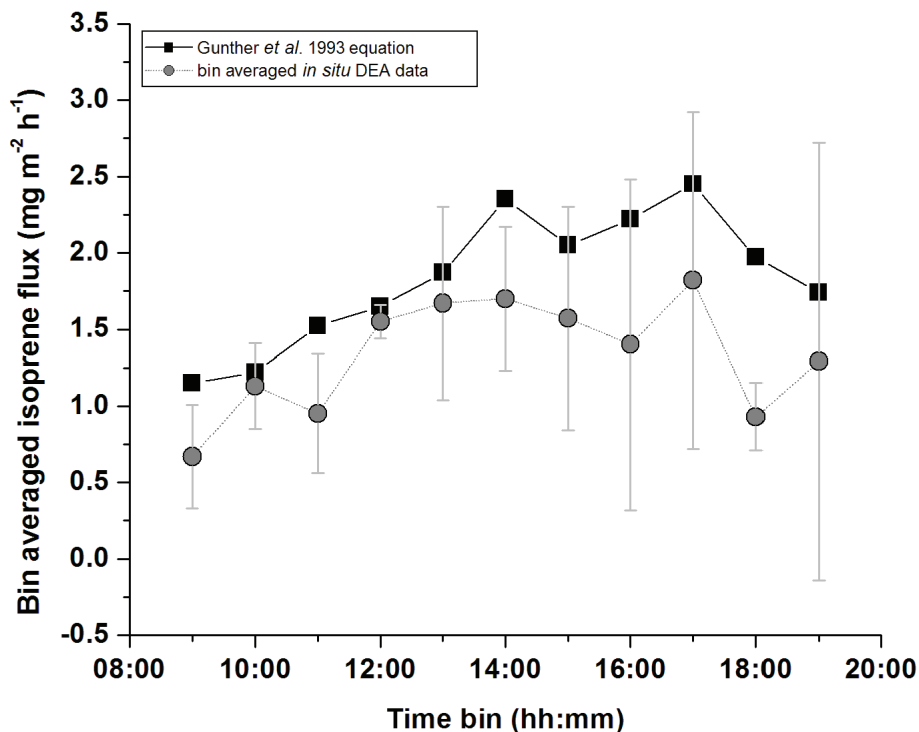


Fig. 6. Comparison of average isoprene flux measured by DEA during CABINEX 2009 to emission algorithms described by Guenther et al. (1993). The emission algorithm over predicts measured isoprene fluxes but are generally within the 1σ standard deviation of the isoprene flux as shown.

[Title Page](#)[Abstract](#)[Introduction](#)[Conclusions](#)[References](#)[Tables](#)[Figures](#)[◀](#)[▶](#)[◀](#)[▶](#)[Back](#)[Close](#)[Full Screen / Esc](#)[Printer-friendly Version](#)[Interactive Discussion](#)

A disjunct eddy accumulation system for the measurement of BVOC fluxes

G. D. Edwards et al.

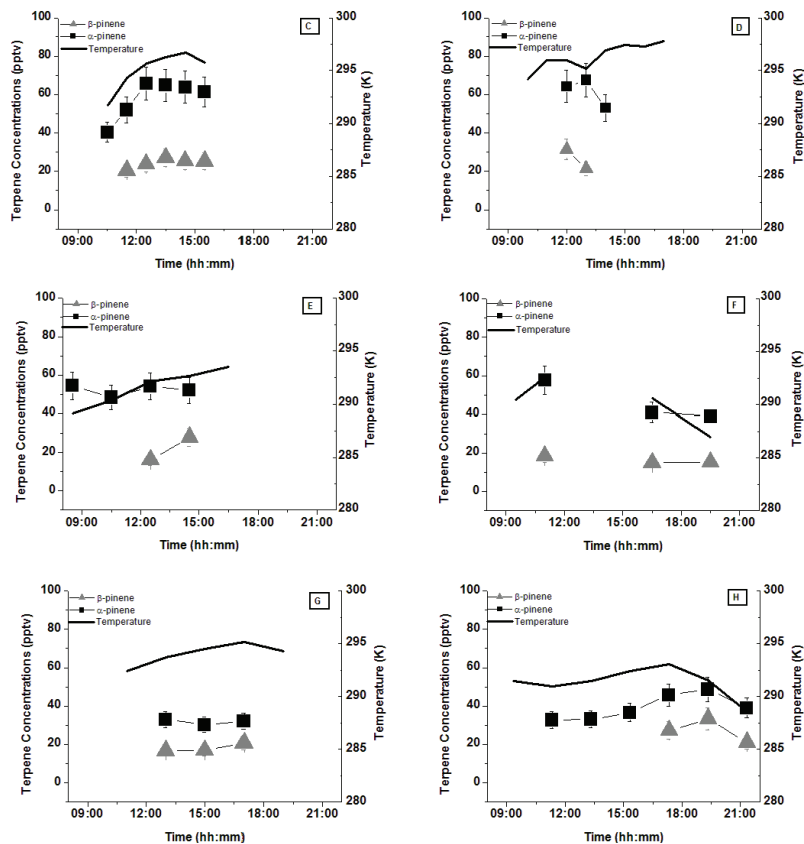


Fig. 7. Concentrations of α - and β -pinene measured via DEA during six intensives of the CAB-INEX 2009 campaign. Data show very low concentrations owing to the nature of this forest site as the forest being dominated by isoprene emitting trees rather than terpene emitting species. Error bars represent the propagated uncertainty associated with the monoterpene measurements. Also plotted are temperature data showing changes driving force for terpene emission are captured in the concentration profile.

A disjunct eddy accumulation system for the measurement of BVOC fluxes

G. D. Edwards et al.

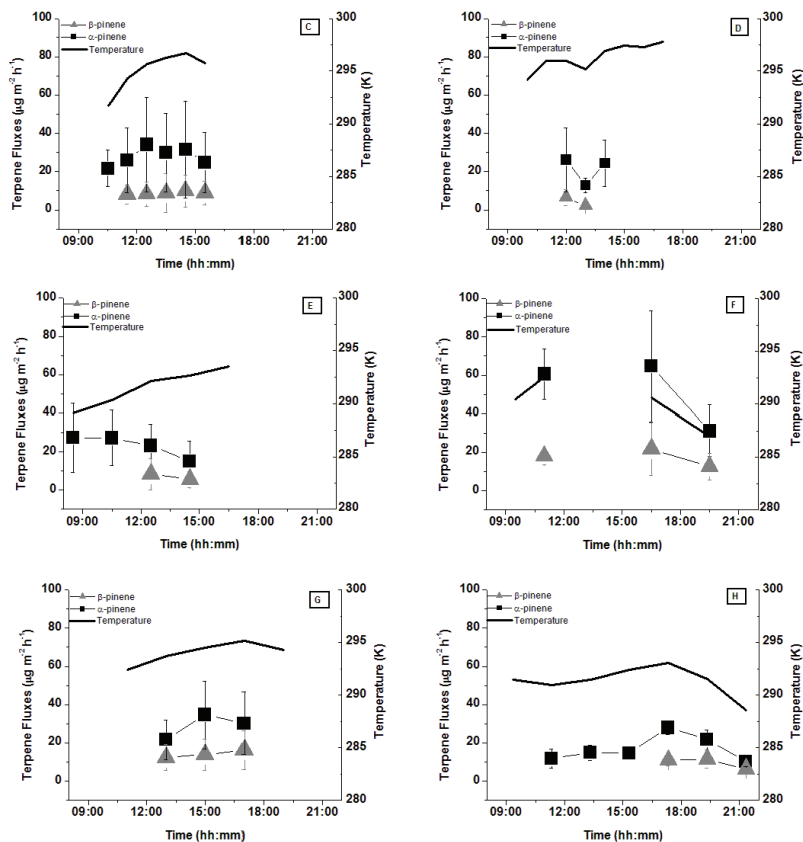


Fig. 8. α -pinene and β -pinene fluxes measured by DEA during six intensives during CABINEX 2009. Error bars represent the propagated uncertainty associated with each flux measurement data point. Again, changes in flux mirror changes in ambient temperature over the course of the day.

A disjunct eddy accumulation system for the measurement of BVOC fluxes

G. D. Edwards et al.

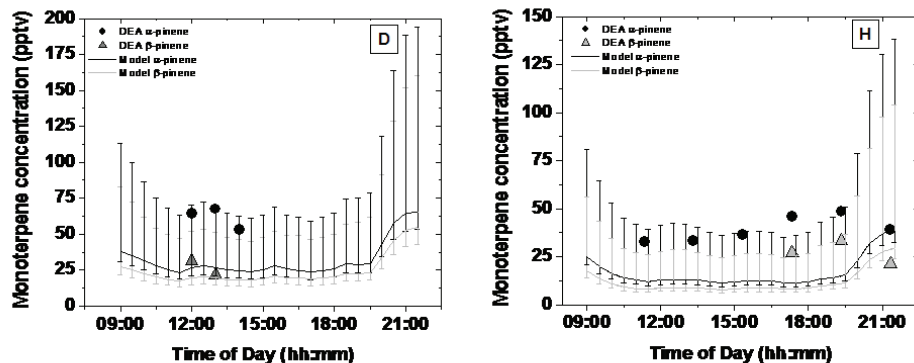


Fig. 9. Comparison of α -pinene and β -pinene concentrations to a 1-D atmospheric chemistry model. Using data measured during CABINEX 2009 to constrain the model, calculated concentrations of α - and β -pinene compare well with the DEA measurements on two partly-sunny days tested 21 July (**D**) and 4 August (**H**), despite the inherently low terpene concentrations at this field site.

[Title Page](#)[Abstract](#)[Introduction](#)[Conclusions](#)[References](#)[Tables](#)[Figures](#)[◀](#)[▶](#)[◀](#)[▶](#)[Back](#)[Close](#)[Full Screen / Esc](#)[Printer-friendly Version](#)[Interactive Discussion](#)

A disjunct eddy accumulation system for the measurement of BVOC fluxes

G. D. Edwards et al.

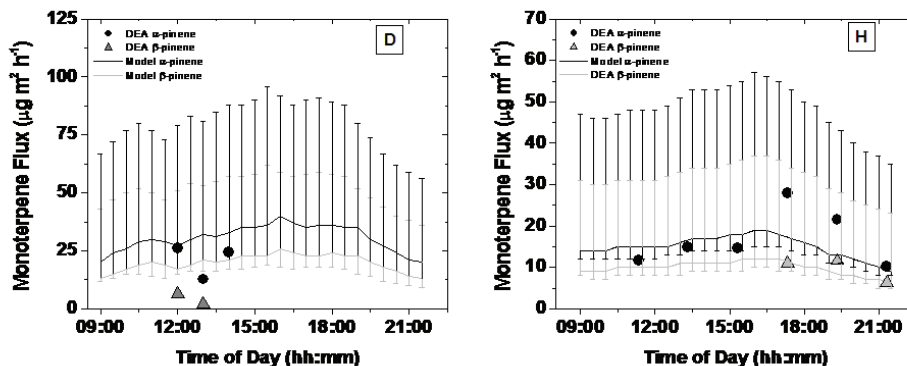


Fig. 10. Comparison of pinene and β -pinene fluxes to a 1-D atmospheric chemistry model. Again, fluxes of pinene and β -pinene compare well with the DEA measurements and are significantly within the relatively large uncertainties associated with this emission based model.

[Title Page](#)[Abstract](#)[Introduction](#)[Conclusions](#)[References](#)[Tables](#)[Figures](#)[◀](#)[▶](#)[◀](#)[▶](#)[Back](#)[Close](#)[Full Screen / Esc](#)[Printer-friendly Version](#)[Interactive Discussion](#)