

**Improved cirrus detection for SEVIRI and validation with MODIS**

F. Ewald et al.

# An improved cirrus detection algorithm MeCiDA2 for SEVIRI and its validation with MODIS

F. Ewald<sup>1,2</sup>, L. Bugliaro<sup>1</sup>, H. Mannstein<sup>1</sup>, and B. Mayer<sup>1,2</sup>

<sup>1</sup>Deutsches Zentrum für Luft- und Raumfahrt, Institut für Physik der Atmosphäre, Oberpfaffenhofen, Germany

<sup>2</sup>Ludwig Maximilians Universität, Institut für Meteorologie, München, Germany

Received: 21 May 2012 – Accepted: 2 July 2012 – Published: 1 August 2012

Correspondence to: F. Ewald (florian.ewald@campus.lmu.de)

Published by Copernicus Publications on behalf of the European Geosciences Union.

Title Page

Abstract

Introduction

Conclusions

References

Tables

Figures

⏪

⏩

◀

▶

Back

Close

Full Screen / Esc

Printer-friendly Version

Interactive Discussion

## Abstract

The influence of cirrus clouds on the radiation budget of the Earth depends on their optical properties and their global coverage. The monitoring of cirrus coverage with instruments aboard geostationary satellites enables the investigation of cirrus clouds at the global scale as well as the identification of their diurnal variation. For instance, the Spinning Enhanced Visible and Infrared Imager (SEVIRI) aboard the Meteosat Second Generation (MSG) satellites provides data with high temporal resolution of 15 min and a spatial resolution of 3 km × 3 km at the sub-satellite point. In addition, the Moderate Resolution Imaging Spectroradiometer (MODIS) aboard the sun-synchronous platforms Terra and Aqua delivers at least one observation per day with a high spatial resolutions ranging from 250 m × 250 m to 1 km × 1 km. Since the infrared channels of the SEVIRI instrument are suitable for an observation which is independent from day-light, Krebs et al. (2007) developed a cirrus detection algorithm for SEVIRI (called MeCiDA), based solely on its thermal channels. Since MeCiDA was optimised for the area of Europe only, we present an improved version of the algorithm which allows application to the full Meteosat disc. Required changes include the consideration of the viewing angle dependency and of the sensitivity of the 9.7 μm channel to the ozone column. To this end, a correction is implemented that minimises the influence of the variability of the stratospheric ozone. The validation of the proposed improvements is carried out by using MeCiDA applied to MODIS data to address viewing angle-dependent cirrus detection and by additionally comparing it to the Cloud Optical Properties MOD06 cirrus product. The new MeCiDA version detects less cirrus than the original one for latitudes larger than 40° but almost the same amount elsewhere. MeCiDA's version for MODIS is more sensitive than that for SEVIRI with cirrus occurrences higher by 10%, and the new MeCiDA provides almost the same cirrus coverage (±0.1) as given by the Cloud Phase Optical Properties from MODIS for latitudes smaller than 50°. Finally, the influence of sub-pixel clouds on the SEVIRI cirrus detection has been examined: more than 60% of the undetected SEVIRI cirrus pixels have a cirrus coverage smaller than 0.5.

### Improved cirrus detection for SEVIRI and validation with MODIS

F. Ewald et al.

Title Page

Abstract

Introduction

Conclusions

References

Tables

Figures



Back

Close

Full Screen / Esc

Printer-friendly Version

Interactive Discussion



## 1 Introduction

Clouds, especially thin ice clouds, play an essential role in climate since they have the ability to interact strongly with incoming and outgoing solar and terrestrial radiation. While thin ice clouds, so called cirrus clouds, reflect only a small portion of the incoming solar radiation, they are very effective at inhibiting the transmission of thermal radiation. Due to their location in the upper troposphere where low temperatures prevail, their emission of thermal radiation to space is small. Thus, the radiative forcing of cirrus clouds on the radiation balance at the top of atmosphere can be positive and may lead to a warming of the Earth-atmosphere system. Furthermore, cirrus clouds can be of anthropogenic origin. The warm and humid exhaust of aircraft in this part of the atmosphere can lead to the formation of condensation trails (contrails) (Schmidt, 1941; Appleman, 1953; Schumann, 1996) that can eventually evolve into extended cirrus clouds (Duda et al., 2004; Atlas et al., 2006; Minnis et al., 1998, 2004; Jensen et al., 1998; Unterstrasser and Gierens, 2010). Changes in cirrus cloud cover or optical and physical properties can thus contribute to climate change.

For this reason, cirrus cloud remote sensing from space is an important and effective tool to monitor climate change. On polar orbiting satellites there are instruments that are very sensitive to cirrus clouds like the TIROS Operational Vertical Sounder TOVS (Stubenrauch et al., 2006), the High Resolution Infrared Radiation Sounder HIRS (Wylie et al., 2005), the Stratospheric Aerosol and Gas Experiment limb sounder SAGE II (Wylie and Wang, 1997), the Atmospheric Infrared Sounder AIRS (Stubenrauch et al., 2010), or the Cloud-Aerosol Lidar with Orthogonal Polarization CALIOP (Vaughan et al., 2004). However, sounders have the disadvantage of a coarse spatial resolution, while lidars have a very limited spatial coverage due to their small footprint size. Moreover, polar orbiting platforms do not allow for the investigation of diurnal cycles of cirrus cloud coverage and properties. In contrast, passive optical instruments aboard geostationary satellites offer the possibility to investigate the diurnal cycles of clouds because of their high repeat cycle (usually between 5 and 30 min)

### Improved cirrus detection for SEVIRI and validation with MODIS

F. Ewald et al.

Title Page

Abstract

Introduction

Conclusions

References

Tables

Figures



Back

Close

Full Screen / Esc

Printer-friendly Version

Interactive Discussion



## Improved cirrus detection for SEVIRI and validation with MODIS

F. Ewald et al.

Title Page	
Abstract	Introduction
Conclusions	References
Tables	Figures
⏪	⏩
◀	▶
Back	Close
Full Screen / Esc	
Printer-friendly Version	
Interactive Discussion	

and their almost global spatial coverage. Because of this, the MeCiDA algorithm (Meteosat Cirrus Detection Algorithm) was developed in Krebs et al. (2007) for application to MSG/SEVIRI (Sect. 2.1). This dedicated cirrus detection scheme uses exclusively the seven thermal channels of MSG/SEVIRI and employs morphological and multi-spectral threshold techniques to infer the presence of cirrus cloud inside MSG/SEVIRI pixels (Sect. 3.1). However, this algorithm has been developed and tuned for Central Europe so that its global applicability is not guaranteed. In particular, the scheme does not contain any explicit viewing angle dependency and it has shown to be too sensitive to ozone properties due to the use of the MSG/SEVIRI channel centred at 9.7  $\mu\text{m}$  (see Sect. 4.1). During studies of the difference in cirrus coverage between the Northern and Southern Hemisphere far too high values for the cirrus coverage over the South Atlantic have been observed. Since this artefact leads to unrealistic overcast situations over large areas, its cause needs to be investigated in-depth.

To overcome these deficiencies we have derived the function of the viewing angle dependency starting from an exhaustive radiative transfer simulation dataset (Sect. 4.2) and we have estimated the impact of stratospheric ozone amount on brightness temperatures measured at a wavelength of 9.7  $\mu\text{m}$  (Sect. 4.3). To test the impact of these changes we have made extensive use of MODIS data and products. First, we have adapted and applied MeCiDA to the MODIS instrument aboard the polar orbiting Terra satellite (Sect. 5.1). This enables us to compare the outcome of the same algorithm when applied to different sensors with different viewing angle geometries. On the other hand, we have compared cirrus cover maps derived from MeCiDA before and after the modifications to an independent cirrus cloud product (the MOD06 Cloud Phase Optical Properties) (Sect. 3.2). The results are illustrated in Sect. 6.

## 2 Instruments

The SEVIRI radiometer aboard the geostationary Meteosat Second Generation (MSG) satellite and the MODIS instrument aboard the polar orbiting Terra and Aqua spacecraft



provide complementary information about clouds and their optical and microphysical properties. In particular, MODIS has 36 spectral channels with high spatial resolution ( $\leq 1000$  m) and provides global coverage of the Earth every one or two days with a repeat cycle of 16 days. In contrast, SEVIRI has a high temporal resolution ( $\leq 15$  min) but a coarser spatial resolution and fewer spectral channels. Detailed characteristics of the two sensors are given in the next two subsections.

## 2.1 SEVIRI

The Spinning Enhanced Visible and Infrared Imager SEVIRI (Schmetz et al., 2002) aboard the geostationary MSG satellite scans a large portion of the Earth with 11 low resolution spectral bands of 3 km sampling distance and one high resolution visible (HRV) channel of 1 km sampling distance (see Table 1). The SEVIRI high temporal resolution of 15 min (or 5 min in rapid scan mode) enables a quantitatively investigation of the life cycle of clouds. Its seven thermal channels are onboard calibrated (10 bits), while the solar channels are not (vicarious calibration methods are used instead). The Meteosat Second Generation programme started in August 2002 with the launch of the first satellite (MSG1, renamed to Meteosat-8), continued in December 2005 with the MSG2 satellite (renamed to Meteosat-9) and should last until 2018 with two more satellites.

## 2.2 MODIS

The Moderate Resolution Imaging Spectrometer MODIS provides high radiometric sensitivity (12 bit) in 36 spectral bands ranging from  $0.4 \mu\text{m}$  to  $14.4 \mu\text{m}$ . Two solar bands (bands 1–2) are imaged at a nominal resolution of 250 m at nadir, five solar bands (bands 3–7) at 500 m, and the remaining 29 bands (bands 8–36) at 1 km. The MODIS bands corresponding to SEVIRI's channels are shown in Table 1. A  $\pm 55$ -degree scanning pattern at the orbit height of 705 km achieves a 2330 km wide swath and provides global coverage every one to two days. MODIS is one of the key instruments

### Improved cirrus detection for SEVIRI and validation with MODIS

F. Ewald et al.

Title Page

Abstract

Introduction

Conclusions

References

Tables

Figures

◀

▶

◀

▶

Back

Close

Full Screen / Esc

Printer-friendly Version

Interactive Discussion



aboard the polar orbiting sun-synchronous Earth Observing System (EOS) spacecraft Terra and Aqua. Terra (EOS AM-1), launched December 1999, is the morning satellite with an equator descending node crossing time of 10:30 UTC, while Aqua (EOS PM-1), launched May 2002, is the afternoon satellite with an equator ascending node crossing time of 13:30 UTC.

### 3 Detection of cirrus clouds

Cirrus cloud detection by means of passive imagers is a delicate task. The main reason is that cirrus often shows very low optical thickness and is hardly visible in solar channels over bright surfaces. At the same time, since its high transmissivity (and low emissivity) produces brightness temperatures that are a mixture of those from the surface and from the clouds, cirrus is difficult to detect in thermal channels as well. In contrast, optically thick water clouds are opaque and the surface albedo/temperature is irrelevant. Thus, advanced techniques must be employed to detect cirrus clouds. In this section we give an overview of two algorithms. The first one is the day- and night-time Meteosat Cirrus Detection Algorithm MeCiDA that has been developed by Krebs et al. (2007) to extract information about cirrus cloud contamination from thermal SEVIRI channels over Central Europe. The second algorithm has been developed for application to MODIS by the MODIS team. Unlike the MeCiDA algorithm, the MODIS product Cloud Phase Optical Properties CPO is limited to daytime use only.

#### 3.1 SEVIRI: MeCiDA

The Meteosat Cirrus Detection Algorithm MeCiDA (Krebs et al., 2007) was developed to analyse the influence of air traffic on the diurnal cycle of cirrus clouds over Central Europe. Please notice that in Krebs et al. (2007) and this paper a cirrus cloud is any cloud whose topmost layer is composed of ice crystals. This means that not only thin cirrus clouds belong to this category but also cumuli and deep convective clouds with

## Improved cirrus detection for SEVIRI and validation with MODIS

F. Ewald et al.

Title Page

Abstract

Introduction

Conclusions

References

Tables

Figures

◀

▶

◀

▶

Back

Close

Full Screen / Esc

Printer-friendly Version

Interactive Discussion



---

**Improved cirrus detection for SEVIRI and validation with MODIS**F. Ewald et al.

---

[Title Page](#)[Abstract](#)[Introduction](#)[Conclusions](#)[References](#)[Tables](#)[Figures](#)[⏪](#)[⏩](#)[◀](#)[▶](#)[Back](#)[Close](#)[Full Screen / Esc](#)[Printer-friendly Version](#)[Interactive Discussion](#)

iced tops. The algorithm consists of six independent tests whose results are merged into one single cirrus mask (see Table 2 for an overview). Each test is considered as a stand-alone cirrus detection algorithm and tries to identify both thin and thick cirrus, even in the presence of an underlying water cloud. MeCiDA decides whether a SEVIRI pixel is cirrus covered by means of several threshold and morphological tests based on thermal channels alone. Therefore it enables the continuous monitoring of cirrus coverage. There are two different test groups, the multi-spectral threshold tests and the morphological tests. Test 1–3 and 6 belong to the first test group: they adopt brightness temperature differences (BTD) between various channel pairs to detect thin cirrus layers. Additional constraints on brightness temperatures (BT) or brightness temperature difference ensure that also very cold clouds and thick cirrus clouds are detected. Despite their basic similarity, Test 1–3 and Test 6 differ in two details (see Table 2):

- to enable a most general application, Test 1–3 use so-called corrected brightness temperature differences: to produce these corrected BTDs the brightness temperature difference of the underlying feature (ground or water cloud) is subtracted from the measured brightness temperature difference. Test 6 is not equipped with such a mechanism;
- if the pixels pointed at by the BTD test represent clouds whose tops are located in the upper troposphere they must be visible in one of the two SEVIRI water vapour channels; this additional constraint is implemented by means of a particular threshold test applied to a water vapour BT in Test 1–3. Test 6 uses to this end a somewhat simpler BT test on the CO<sub>2</sub> channel located around 13.4 μm.

These differences play an important role when analysing the performance of these tests.

The second test group comprising Test 4 and Test 5 exploit almost exclusively the morphology of the cirrus clouds in the water vapour channels: cirrus clouds appear as high-frequency structures on top of the otherwise very slowly changing water vapour fields. To extract the cirrus structures various high-pass filters are applied to extract

information about the so-called “local standard deviation”. The corresponding local deviation filter operation reads as

$$g_{i,j} = \sqrt{(f_{i,j} \odot K - f_{i,j})^2 \odot K}, \quad (1)$$

where  $\odot$  is the convolution operator,  $f_{i,j}$  is the original image,  $K$  is a Gaussian convolution kernel and  $g_{i,j}$  is the filtered image. The difference between the original and the smoothed image is squared and the result is smoothed again. The convolution kernel  $K(x, y)$  is

$$K(x, y) = \frac{1}{N} \exp\left(-\frac{x^2 + y^2}{2 \cdot \left(\frac{s}{4}\right)^2}\right), \quad (2)$$

where  $N$  is a factor that normalizes the sum of all kernel values to unity,  $s$  is the kernel size (an odd number) which we set to 15 for our application, and  $x$  and  $y$  are in the range from  $-(s-1)/2$  to  $+(s-1)/2$ .

Figure 1 shows an example of MeCiDA cirrus mask (panel a) for a MODIS granule acquired on 11 January 2009 at 12:00 UTC. A false colour composite using MODIS band 1, band 2 and the inverted band 31 (see Table 1) is depicted in Fig. 2 in MSG/SEVIRI projection. This channel combination has been selected for the RGB because it allows a visual discrimination of clouds: low clouds exhibit a yellow colour, thick high clouds are white and thin ice clouds are violet. This is useful for testing the plausibility of the cirrus masks produced by the algorithms. In this case, MeCiDA produces an accurate cirrus distribution. All the cirrus clouds in the northern part of the picture (Fig. 1) are also visible in the RGB (Fig. 2). However, in the lower right corner MeCiDA detects a cirrus clouds that cannot be identified in the RGB.

### 3.2 MODIS: CPO

The Cloud Phase Optical Properties (CPO) is a scientific dataset contained in the MOD06 cloud product. This dataset combines information from visible and thermal

## Improved cirrus detection for SEVIRI and validation with MODIS

F. Ewald et al.

Title Page

Abstract

Introduction

Conclusions

References

Tables

Figures

⏪

⏩

◀

▶

Back

Close

Full Screen / Esc

Printer-friendly Version

Interactive Discussion





## Improved cirrus detection for SEVIRI and validation with MODIS

F. Ewald et al.

Title Page

Abstract

Introduction

Conclusions

References

Tables

Figures

◀

▶

◀

▶

Back

Close

Full Screen / Esc

Printer-friendly Version

Interactive Discussion



MODIS bands to infer cloud phase. It is the basis for the derivation of cloud optical thickness and cloud effective radius and is described in Platnick et al. (2003). Its structure is quite elaborate: it combines cloud mask results (Ackerman et al., 1998) with a bispectral thermal algorithm and a shortwave infrared algorithm. The bispectral algorithm (Baum et al., 2000) exploits the stronger absorption of radiation by ice with respect to water at 11  $\mu\text{m}$  when compared to 8.5  $\mu\text{m}$ . The shortwave infrared algorithm consists of threshold tests applied to the ratio of a near infrared channel (1.61 or 2.13  $\mu\text{m}$ ) to a shortwave infrared channel (0.65, 0.86 or 1.24  $\mu\text{m}$ , depending on surface type). At the near infrared wavelengths, absorption of radiation by water and ice particles takes place as a function of thermodynamic phase and particle radius while at the shorter wavelengths only scattering matters. The “bispectral thermal algorithm” provides an initial phase determination and serves as fallback for the “shortwave infrared algorithm”, which is available with a spatial resolution of 1 km  $\times$  1 km. The Cloud Phase Optical Properties offers a sophisticated detection of cloud phase during daytime, though the phase discrimination for optically thin cirrus and supercooled water drops remains problematic (Platnick et al., 2003) as with other algorithms relying on passive instruments.

## 4 Improved cirrus detection with SEVIRI

### 4.1 Deficiencies of MeCiDA1

During an investigation of cirrus clouds in the Southern Atlantic a striking feature was observed: during the southern spring cirrus coverage started to increase and rapidly reached 100%. This unrealistic behaviour could be identified to be a failure of Test 6 in this region due to its dependency on the ozone channel located at 9.7  $\mu\text{m}$  and the presence of the ozone hole and the following reduction of ozone at mid-latitudes which is a typical phenomenon for Southern Hemisphere spring. This illustrates the fact that MeCiDA had been developed for Central Europe and was not directly applicable to

other regions. Another related issue is the lack of a viewing angle dependency of the thresholds used in the tests. This was due again to the fact that the original algorithm had been tested and tuned for Central Europe where the SEVIRI viewing angle ranges approximately between 50° and 65°.

## 5 4.2 Viewing angle dependency

The atmospheric path of radiation emitted by the Earth-atmosphere system increases with satellite viewing angle, i.e. when regions closer to the horizon are observed. Because of the presence of (weak or strong) gas absorption bands in all the thermal channels the measured BTs decrease with satellite viewing angle because the path length for radiation is longer. Absorption of radiation from warm layers of the atmosphere is intensified along the line of sight as well as the emission of radiation from colder layers of the atmosphere (limb darkening). This effect mainly affects the BT tests of MeCiDA but has not been considered up to now. Test 1–3 use corrected BTDs and are less affected since the subtraction of the BTD of the underlying or surrounding feature from the measured BTDs partly accounts for this effect. Test 6 also belongs to the BTD test group (see Sect. 3.1) but will be analysed in more detail in Sect. 4.3 due to its ozone dependency (see Sect. 4.1).

In order to correctly take into account the viewing angle dependency the extensive radiative transfer simulation dataset has been used, that was also employed during the development of MeCiDA (see also Krebs et al., 2007, Sect. 2.2). It comprises detailed radiative transfer calculations based on random variation of all relevant input data to cover a wide range of possible conditions. The details of radiative transfer calculations performed with the libRadtran package (Mayer and Kylling, 2005) can be found in Krebs et al. (2007).

In order to determine viewing angle dependent thresholds for the BT and BTDs used in the MeCiDA tests we computed the two-dimensional histogram of the BTs of these channels or channel combinations as a function of the cosine of the satellite zenith angle  $\mu = \cos\theta$ . Figure 3 shows an example for the channel at 13.4  $\mu\text{m}$ . The red “ridge”

## Improved cirrus detection for SEVIRI and validation with MODIS

F. Ewald et al.

Title Page

Abstract

Introduction

Conclusions

References

Tables

Figures



Back

Close

Full Screen / Esc

Printer-friendly Version

Interactive Discussion



## Improved cirrus detection for SEVIRI and validation with MODIS

F. Ewald et al.

Title Page

Abstract

Introduction

Conclusions

References

Tables

Figures

⏪

⏩

◀

▶

Back

Close

Full Screen / Esc

Printer-friendly Version

Interactive Discussion

in this plot corresponds to situations without cirrus clouds, while the blue “ridge” corresponds to situations with cirrus clouds. Of course, the absence of cirrus is mirrored in high BTs but the decrease of these cloudless BTs with increasing satellite zenith angle is not negligible. The determination of new, angle-dependent thresholds was done for each  $\mu$  separately as described in the following: For each  $\mu$  contained in the simulations, we approximated the red and blue “ridge” in Fig. 3 by means of two Gaussian fits. The mean values of these two Gaussian curves mark the “baseline” of both BT distributions. Their mean value lies always within the trough between the red and blue “ridge” and serves as a separation between both distributions. Finally, a quadratic function  $T(\mu) = a\mu^2 + b\mu + c$  was fitted to these separating mean values. This fitted function  $T(\mu)$  represents the desired satellite viewing angle dependent threshold function.

Since MeCiDA was originally tuned for Central Europe (Krebs et al., 2007) where it proved to be accurate, our intention was to keep its performance over this region unchanged. Thus, an offset value was calculated such that the value of the quadratic function  $T(\mu)$  determined above at  $\mu \approx 0.5$ , corresponding to the approximate mean  $\mu$  value for this region, was shifted to the original value given in Krebs et al. (2007).

For all other values of  $\mu$  we applied a scaling factor to this shift since the curvature of  $T(\mu)$  varies as a function of  $\mu$ . This scaling factor was calculated by taking the ratio of the spread between the red and blue “ridge” at  $\mu$  and the spread at  $\mu = 0.5$ . This procedure guarantees the continuity between the old and the new algorithm over Europe with simultaneous consideration of a proper differentiation between scenes with and without cirrus for other regions.

This way, all “simple” threshold tests in MeCiDA that do not use corrected BTDs but simple BTs or BTs could be modified to take into account the satellite viewing angle dependency. The results are displayed in Table 2 together with the original values of the thresholds.

### 4.3 Cirrus detection with the 9.7 $\mu\text{m}$ SEVIRI channel

As already mentioned in Sect. 4.1, a misidentification is produced by the BTD Test 6a  $T_{9.7} - T_{13.4} > -7\text{K}$  because the constant threshold employed in this test is not capable to distinguish between cirrus and cirrus free pixels during the course of the year. In fact, the threshold should take into account the annual cycle of ozone since ozone concentrations (and vertical temperature profiles) affect the BT at 9.7  $\mu\text{m}$ . This effect is exemplified by the consideration of this BTD over a region in the South Atlantic located between 45° S–55° S, 45° W–10° W, called SAR in the following, as shown in Fig. 4. To this end, MeCiDA Tests 1–5 were applied to all the available time slots in the year 2007. While MeCiDA Test 6 turned out to be unreliable in this region, the remaining tests proved to yield low false alarm rates such that they could be used to roughly determine which pixels are cirrus covered and which ones are not. Using MeCiDA Tests 1–5 to separate between cloudy and cloudless pixels, we derived  $T_{9.7} - T_{13.4}$  for pixels with and without cirrus and computed the spatial averages for the SAR region. Both cirrus covered and cirrus free BTDs are plotted in Fig. 4. The two curves are separated by approximately 5 K and show a pronounced annual cycle of approximately 5 K. This effect is sufficient to produce mis-detections at the beginning and at the end of the year in this region (see threshold line in Fig. 4).

The observed annual cycle is produced by both the ozone and the CO<sub>2</sub> channels, i.e. the 9.7  $\mu\text{m}$  and the 13.4  $\mu\text{m}$  channels. The channel at 9.7  $\mu\text{m}$  differs from all other thermal channels in that the main part of the absorber gas ozone affecting measurements in this spectral interval is located in the stratosphere, i.e. above the clouds, especially also above the cirrus clouds. Thus, while water vapour for instance becomes almost irrelevant in the 10.8  $\mu\text{m}$  channel when a high cloud is present in the atmosphere, the ozone concentration is still crucial for the interpretation of the ozone channel measurement.

During the distinct warming over the SAR region, starting in southern spring at the onset of the ozone destruction by the exposure to sunlight, one can observe

## Improved cirrus detection for SEVIRI and validation with MODIS

F. Ewald et al.

Title Page

Abstract

Introduction

Conclusions

References

Tables

Figures

⏪

⏩

◀

▶

Back

Close

Full Screen / Esc

Printer-friendly Version

Interactive Discussion

---

**Improved cirrus  
detection for SEVIRI  
and validation with  
MODIS**F. Ewald et al.

---

[Title Page](#)[Abstract](#)[Introduction](#)[Conclusions](#)[References](#)[Tables](#)[Figures](#)[⏪](#)[⏩](#)[◀](#)[▶](#)[Back](#)[Close](#)[Full Screen / Esc](#)[Printer-friendly Version](#)[Interactive Discussion](#)

considerable spikes in 9.7  $\mu\text{m}$  temperatures. High ozone concentrations prevalent at that time lead to higher BTs in this channel in the presence of a cirrus cloud since the ozone layer is located in a part of the stratosphere with higher temperatures than the cirrus cloud top temperature. In contrast, with the presence of low clouds or in the cloud free case an increased ozone concentration leads to lower temperatures in this channel since stratospheric ozone layer temperatures are lower than near ground temperatures. Using again the set of radiative transfer simulations described in Sect. 4.2 we show that a variability of the ozone column by  $\pm 50$  DU causes variability in brightness temperature of  $\pm 5$  K in the SEVIRI 9.7  $\mu\text{m}$  channel. According to Kurzeja (1984), planetary waves at high latitudes are responsible for a variation of the ozone column of up to  $\pm 60$  DU. The mean annual cycle of ozone lies also in this range (Jiang et al., 2008a,b). The very low temperatures of the ozone layer in polar winter also have a cooling effect on the ozone channel. Finally, these effects are enhanced close to the SEVIRI horizon due to the slant view of the satellite. The 13.4  $\mu\text{m}$  channel also presents an annual cycle, but to a lower extent than the ozone channel. The  $\text{CO}_2$  gas is well-mixed in the troposphere such that the 13.4  $\mu\text{m}$  channel temperatures are less sensitive to air temperature changes in confined atmospheric layers like the stratosphere. The 13.4  $\mu\text{m}$  BTs over optically-thick cirrus clouds fluctuate between 240 K in summer and 225 K in winter, which can be assigned solely to changes in atmosphere temperatures as there is no significant fluctuation in  $\text{CO}_2$  concentrations.

Since we wanted to keep the ozone channel at 9.7  $\mu\text{m}$  in our detection algorithm in order to maintain a broad variety of cirrus tests in MeCiDA, we decided to modify Test 6a in such a way as to produce a larger temperature difference between the cirrus covered and the cirrus free case that is independent of time of the year. To this end, the  $\text{CO}_2$  channel was replaced with the 10.8  $\mu\text{m}$  channel and the channel combination  $T_{9.7} - T_{10.8}$  was selected. Although this BTD shows a pronounced annual cycle for both cirrus free and cirrus covered pixels (see Fig. 5a), for cirrus contaminated observations this is mainly produced by the ozone channel alone since cirrus measurements in the atmospheric window channel centred at 10.8  $\mu\text{m}$  have a moderate dependency on time

of the year between 245 K in summer and 235 K in winter. The result of this substitution is plotted in Fig. 5a as a function of day of the year averaged over the SAR region in 2007 for both cirrus and cirrus free pixels (again obtained from MeCiDA Tests 1–5).

These two curves are apart by more than 10 K thus confirming a strong sensitivity of this new channel difference on cirrus clouds and making it easier to differentiate between cirrus covered and cirrus free pixels. Second, to mitigate the effect of varying ozone concentrations on this channel combination, a correction was added by considering very cold (thick) cirrus pixels with  $10.8\ \mu\text{m}$  brightness temperatures  $T_{10.8}$  smaller than 238 K. This value for an average viewing angle over Central Europe ( $\mu = 0.5$ ) is adapted to other viewing angles in the same way like the other tests (Table 2, Test 6a). In the case of cold cirrus clouds, the  $T_{9.7} - T_{10.8}$  is a proxy for the influence of stratospheric ozone on  $9.7\ \mu\text{m}$  channel measurements and can be used to reduce the effect of the annual cycle of ozone on  $T_{9.7}$  measurements, i.e. to produce a correction term  $\Delta T_{\text{corr}}^{\text{O}_3}$  to be added to the  $T_{9.7}$  brightness temperature.

We proceed like this: first, all pixels with  $T_{10.8} < (230.1 + 17.3\mu - 6.4\mu^2)$  K are marked. This threshold was determined using the same method as in Sect. 4.2 and corresponds to  $T_{10.8} < 238$  K over Europe. Then, connected cloud pixels are identified and their  $T_{9.7} - T_{10.8}$  temperature differences are averaged into a single value. To obtain an upper estimate for the ozone influence on  $T_{9.7}$  only cloud clusters (i.e. blobs of connected cloud pixels) with a difference value above the mean difference value of  $T_{9.7} - T_{10.8}$  in the corresponding  $10^\circ \times 10^\circ$  latitude/longitude region are incorporated in this average. This average then represents the  $\Delta T_{\text{corr}}^{\text{O}_3}$  for the corresponding cloud patch. In order to guarantee temporally stable results and to reduce false corrections, too small cloud objects (with less than 450 pixels, which corresponds to approx.  $5000\ \text{km}^2$  on SEVIRI over Europe) are excluded. In addition, overshooting Cb tops are detected and filtered out using  $T_{6.2} - T_{10.8} > 0$  K (Tjemkes et al., 1997). Overshooting Cb tops are not suitable for this technique due to their vertical extent into the lower stratosphere, which would partly mask the effect of ozone and cause a diurnal cycle.

## Improved cirrus detection for SEVIRI and validation with MODIS

F. Ewald et al.

Title Page

Abstract

Introduction

Conclusions

References

Tables

Figures

⏪

⏩

◀

▶

Back

Close

Full Screen / Esc

Printer-friendly Version

Interactive Discussion



## Improved cirrus detection for SEVIRI and validation with MODIS

F. Ewald et al.

Title Page

Abstract

Introduction

Conclusions

References

Tables

Figures

⏪

⏩

◀

▶

Back

Close

Full Screen / Esc

Printer-friendly Version

Interactive Discussion



Since in every satellite scene only few pixels, if any, will satisfy these conditions, the correction value that is available only at single spots is then interpolated and extrapolated to the full area of observation. This is done by anisotropic kriging to take into account the zonal character of the ozone field. If no such cold cirrus are present, an empirical value of  $\Delta T_{\text{corr}}^{\text{O}_3} = 4 \text{ K}$  is used. After application of this correction, the BTD first shown in Fig. 5a then looks like in Fig. 5b.

Finally, viewing angle dependency was analysed in analogy to Sect. 4.2 to obtain the final revised version of Test 6a as in Table 2.

In the following, the original version of MeCiDA from Krebs et al. (2007) will be called MeCiDA1 while the new version described here will be referred to as MeCiDA2.

## 5 Validation

Our methodology to validate the changes introduced in the original MeCiDA algorithm (MeCiDA1) is twofold. On one side, the MODIS product CPO (see Sect. 3.2) is used as independent source of information. It is based on different physical principles than MeCiDA (it relies on solar channels etc.) and uses data from a sensor aboard a polar orbiting satellite that thus sees the Earth under different viewing conditions. Thus, comparison of MeCiDA1 and MeCiDA2 cirrus masks with CPO will give insight into the performance of the old and new MeCiDA version. On the other side, to get a more detailed information about the effect produced by the consideration of the satellite viewing dependency we decided to adapt MeCiDA to MODIS. This way, the same algorithm could be applied to cloud fields that were observed under different angles by the two sensors, the geostationary SEVIRI and the polar orbiting MODIS.

For the comparison we selected a winter and a summer month: January and July 2008, for the region between  $-10^\circ \text{ E}$  and  $+20^\circ \text{ E}$  (Fig. 6). This way, the latitude dependency of cirrus detection (and hence the viewing angle dependency) can be assessed. Furthermore, the selected region both contains land and ocean pixels and reaches to very high southern latitudes where the ozone problem mentioned in Sect. 4.1 was

encountered. For the comparisons between MeCiDA and the MODIS product CPO we retrieved from the MODIS archive all Collection 5 MOD06 granules that intersect this region and time intervals. Since the CPO product makes use of solar channels, only day granules could be considered. In contrast, for the comparisons between MeCiDA on SEVIRI and MeCiDA on MODIS all MOD02 granules could be utilized because only thermal channels were needed. In total, 1412 MODIS granules in January and 1416 MODIS granules in July were used for this comparison (MOD02 and MOD06 for each granule).

### 5.1 Adaption of MeCiDA to MODIS: MoCiDA

Since MODIS with its 36 spectral bands also covers the 11 SEVIRI channels it is possible in principle to apply MeCiDA to MODIS data. However, a closer look at the MODIS and SEVIRI spectral response functions reveals that MODIS bands are in general narrower and that the first SEVIRI water vapour channel is shifted with respect to MODIS: the SEVIRI channel is centred at  $6.25\ \mu\text{m}$  while the corresponding MODIS channel is centred at  $6.75\ \mu\text{m}$  (see Fig. 7).

This requires special care and a modification of the thresholds in those tests using this channel. In order to determine the needed modifications of the threshold values, we have performed radiative transfer calculations for both sensors and selected atmospheric conditions. Identical to SEVIRI (see the description of the radiative transfer calculations in Sect. 4.2), MODIS bands are simulated using LOWTRAN 7 with 15 sample points for each band. It was found that  $T_{9.7, \text{SEVIRI}} - T_{9.7, \text{MODIS}}$  is always negative. This is particularly true for clear sky conditions and large satellite viewing angles, while in the presence of cirrus clouds this difference becomes less negative. The  $\text{CO}_2$  channel shows the opposite behaviour:  $T_{13.4, \text{SEVIRI}} - T_{13.4, \text{MODIS}}$  is always positive without clouds, but it tends to zero for cirrus covered pixels. Furthermore, SEVIRI channel 5 ( $6.25\ \mu\text{m}$ ) temperatures are colder than MODIS band 27 temperatures ( $6.75\ \mu\text{m}$ ) by approximately 3 K in the presence of cirrus clouds such that  $T_{6.2} - T_{7.3} > -12\ \text{K}$  in Test 1, 2 and 3 are modified to  $T_{6.2} - T_{7.3} > -9\ \text{K}$  (see also Table 3).

## Improved cirrus detection for SEVIRI and validation with MODIS

F. Ewald et al.

Title Page

Abstract

Introduction

Conclusions

References

Tables

Figures

⏪

⏩

◀

▶

Back

Close

Full Screen / Esc

Printer-friendly Version

Interactive Discussion





## Improved cirrus detection for SEVIRI and validation with MODIS

F. Ewald et al.

[Title Page](#)

[Abstract](#)

[Introduction](#)

[Conclusions](#)

[References](#)

[Tables](#)

[Figures](#)

[⏪](#)

[⏩](#)

[◀](#)

[▶](#)

[Back](#)

[Close](#)

[Full Screen / Esc](#)

[Printer-friendly Version](#)

[Interactive Discussion](#)



Dependencies of BT and BTDs on satellite viewing angles were inherited from MeCiDA2. Finally, this leaves us with two versions of MeCiDA for MODIS, called MoCiDA (MODIS Cirrus Detection Algorithm): MoCiDA1 refers to the first version of MeCiDA as displayed in Krebs et al. (2007) while MoCiDA2 refers to the version presented in this paper including satellite viewing angle dependency and ozone correction.

Finally, we discuss here an example of comparison between MoCiDA and CPO by looking at Fig. 1b. Here, the difference between these two cloud masks is plotted (the MeCiDA mask is found in the left panel in Fig. 1 and a RGB false colour composite in Fig. 2). Two main effects appear here: (1) around those cirrus structures that are detected by both algorithms MoCiDA tends to detect some additional cloud pixels. According to the violet colours of many of these additional pixels in the RGB image, this seems to suggest a higher sensitivity of MoCiDA with respect to CPO. (2) There is an additional cloud structure that is identified by CPO as cirrus while MoCiDA does not see it at all. Here, it seems that CPO is (correctly) detecting the iced tops of these cloud structures. Remember that the differences observed here are due only to algorithmic differences since the sensor utilised is the same for MoCiDA and CPO.

### 5.2 Collocation of SEVIRI and MODIS and averaging

The different viewing geometries of the SEVIRI and MODIS instruments can produce apparent spatial shifts of cloud structures, especially cirrus clouds, due to their location in the upper troposphere between approx. 8 and 12 km in mid-latitudes or even higher in the tropics. This leads to spurious results when cirrus masks extracted from different space-borne sensors are compared to each other. For this reason, we displace the cirrus clouds in such a way as to minimise these parallax effects. To reach this goal, we use the Cloud Top Pressure (Menzel et al., 2008) contained in the MOD06 product (5 km × 5 km) in combination with ECMWF ERA40 reanalysis (Uppala et al., 2005) pressure fields to determine the geometric top height of the detected cirrus clouds. In order to suppress possible MOD06 product deficiencies and to produce meaningful values for MoCiDA pixels at the mostly semi-transparent edges of cirrus clouds, we

took the maximum height in an area of  $9 \times 9$  pixels centred around the pixel under consideration. When no pressure value could be found in the MOD06 product, a cirrus cloud top height of 10 km was assumed for this pixel.

After parallax correction, MODIS cirrus masks were projected onto the SEVIRI grid: MODIS pixels belonging to one SEVIRI pixel were averaged thus providing cirrus cloud cover for every SEVIRI grid point. As a result, a mask of cirrus clouds derived from MODIS data is obtained for the SEVIRI grid.

For the comparison between MODIS and SEVIRI, we start with a MODIS granule and select the SEVIRI slot that lies closest to the given MODIS overpass. Thus, at most an acquisition time difference of 7.5 min is achieved. Nevertheless, this can lead to different cloud masks because during this time clouds might have evolved. Once the MoCiDA and MeCiDA cirrus masks are obtained, the information about cirrus coverage is stored for every SEVIRI pixel contained in the region of interest (see Fig. 6). This procedure was repeated for all MODIS granules in January and July 2008. Eventually the mean frequency of cirrus occurrence is computed for every SEVIRI pixel by taking the ratio of the number of cirrus observations and the number of overall observations (temporal averaging). Finally, the region of interest is split into  $5^\circ$  degree latitude boxes and the mean frequency of cirrus occurrence for a pixel inside these boxes is generated as the spatial average inside the box of all (temporal) mean pixel frequencies of cirrus occurrence.

## 6 Results

For a first illustration of the performance of MeCiDA1 and MoCiDA1 we start the following subsections with a short discussion of the sample scene displayed in Fig. 2. Then, to evaluate the effect of the changes described in Sects. 4.2 and 4.3 we discuss zonal means of cirrus cloud cover as derived from MeCiDA1 or MeCiDA2 against MoCiDA1 or MoCiDA2 or CPO as a function of latitude ( $^\circ$  N). Since the amount of MODIS observations is very high close to the upper and lower SEVIRI disc and because at the

### Improved cirrus detection for SEVIRI and validation with MODIS

F. Ewald et al.

Title Page

Abstract

Introduction

Conclusions

References

Tables

Figures

◀

▶

◀

▶

Back

Close

Full Screen / Esc

Printer-friendly Version

Interactive Discussion



same time the spatial resolution of SEVIRI is very poor, we perform the comparisons between  $-470^{\circ}$  N and  $+70^{\circ}$  N.

## 6.1 MeCiDA vs. MoCiDA: comparison

In Fig. 8 the difference in cloud cover between MeCiDA2 and MoCiDA2 are plotted for the scene shown in Fig. 2. Generally speaking, both algorithms detect the same cirrus structures. Nevertheless, differences are also present and are mainly located close to cloud edges. This might be partly due to the slight acquisition time difference between the SEVIRI and the MODIS observation, during which clouds have evolved or moved. Also, the discrepancies come from the higher spatial resolution of the MODIS instrument that enables a more detailed definition of cloud contours. Finally, the different viewing geometry of the two sensors could be responsible for the disagreement. In fact, small cloud holes might disappear in the SEVIRI mask due to the slant viewing geometry of SEVIRI in this region West of Spain: this could be the case in the upper left corner of the observed granule. Furthermore, the slant optical thickness of a cirrus cloud is of course larger than the nadir optical thickness. This could result in a higher detection efficiency of SEVIRI with respect to the MODIS measurements: this could be the case for the small cirrus clouds detected by MeCiDA2 right west of the southern coast of Portugal that are not retrieved by MoCiDA2 (or only partially).

All zonal means of cirrus cover for MeCiDA1, MeCiDA2, MoCiDA1 and MoCiDA2 are shown in Fig. 9 for January (panel a) and July (panel b). In both months all curves clearly indicate the location of the Inner Tropical Convergence Zone (ITCZ) around the Equator where the high insolation leads to pronounced convection and to the formation of cirrus clouds. While the subtropical zones are almost cirrus free due to the general subsidence, cirrus coverage increases for latitudes higher than  $\pm 30^{\circ}$  N.

We first discuss MeCiDA1 and MoCiDA1, the dashed black and dashed blue curve in Fig. 9a and b. The two curves in Fig. 9a run parallel, apart from latitudes South of  $55^{\circ}$  S, where they approach each other. MeCiDA1 shows a systematically lower cirrus cover of up to 0.15. The rapid increase towards the poles starting at  $-40^{\circ}$  N is very striking

### Improved cirrus detection for SEVIRI and validation with MODIS

F. Ewald et al.

Title Page

Abstract

Introduction

Conclusions

References

Tables

Figures

⏪

⏩

◀

▶

Back

Close

Full Screen / Esc

Printer-friendly Version

Interactive Discussion



## Improved cirrus detection for SEVIRI and validation with MODIS

F. Ewald et al.

Title Page	
Abstract	Introduction
Conclusions	References
Tables	Figures
⏪	⏩
◀	▶
Back	Close
Full Screen / Esc	
Printer-friendly Version	
Interactive Discussion	

and is related to the uncorrected MeCiDA1 ozone dependency. Such a behaviour is not observed elsewhere and can therefore not be solely explained with the viewing angle differences between SEVIRI and MODIS. As far as MeCiDA2 and MoCiDA2 are concerned (the solid yellow and red lines in Fig. 9), we see that MoCiDA2 is still more sensitive to cirrus clouds than MeCiDA2, probably because of MODIS' higher spatial resolution. However, the difference between the yellow and red line is now smaller than between the two dashed curves (MeCiDA1 and MoCiDA1). Furthermore, the MeCiDA2 and MoCiDA2 cirrus covers differ by an approximately constant amount over the entire latitude range. This confirms the expectation that the two algorithms now work similarly well at the global scale, although the underlying sensor characteristics and satellite platform orbit differ.

Comparing MeCiDA1 with MeCiDA2, they almost coincides for latitudes between  $\pm 30^\circ$  while MoCiDA's changes are more pronounced already in this latitude band and are largest between  $+20^\circ$  N and  $+50^\circ$  N. Closer to the poles differences between the two algorithms versions are larger. Although a peak at around  $-55^\circ$  N is present in both versions, in version 2 of the cirrus detection schemes it is shallower.

Figure 9b depicts a similar behaviour. In particular, the exceedingly high values close to  $+60^\circ$  N disappear and the overall difference between MeCiDA and MoCiDA is considerably smaller for version 2 than for version 1. As for January, the winter hemisphere mid- to high-latitudes show high values of cirrus coverage, probably related to the enhanced occurrence of fronts with iced tops.

The values of ice cloud cover obtained with the revised versions of these algorithms (MeCiDA2, MoCiDA2) are plausible. For instance, Hagihara et al. (2010, Fig. 13c) show zonal means of cirrus coverage for September 2006–November 2006 extracted from the CALIOP/CALIPSO lidar sensor (Winker et al., 2010) and the MODIS radiometer measurements. This plot can be compared to Fig. 9 in this study. The location of maxima and minima is very similar in the latitude range ( $-30^\circ$  N,  $+70^\circ$  N) but MeCiDA2 and MoCiDA2 underestimate cirrus cloud coverage with respect to CALIOP by approx. 0.2 due to the higher sensitivity of the lidar instrument. Closer to the south pole the situation



**Improved cirrus detection for SEVIRI and validation with MODIS**

F. Ewald et al.

Title Page

Abstract Introduction

Conclusions References

Tables Figures

⏪ ⏩

◀ ▶

Back Close

Full Screen / Esc

Printer-friendly Version

Interactive Discussion

is different. The strong cirrus coverage increase observed for both our MeCiDA2 and MoCiDA2 in the Southern Hemisphere does not find a counterpart in the CALIOP data where cirrus coverage only reaches 0.4–0.5 at  $-70^{\circ}$  N. This is consistent with Kahn et al. (2008, Fig. 5b), where zonal averages between  $\pm 70^{\circ}$  N of effective cloud amount or upper layer clouds and a period of five days from July to November 2006 derived from the Atmospheric Infrared Sounder (AIRS) aboard Aqua (Aumann et al., 2003) is shown. The peak of effective cloud amount in the ITCZ at  $10^{\circ}$  N amounts to approx. 0.35, then it decreases to 0.15 at  $-10^{\circ}$  N and 0.2 at  $25^{\circ}$  N and increases again to values around 0.30 at  $-40^{\circ}$  N and  $55^{\circ}$  N. In the Northern Hemisphere, effective cloud amount then stays almost constant, while in the Southern Hemisphere effective cloud amount decreases to 0.15 at  $-70^{\circ}$  N, which contrasts our observations. However, it must be noticed that effective cloud amount is the product of cloud emissivity and cloud fraction. Since emissivity for cirrus clouds is often smaller than 1, AIRS effective cloud amount and our cloud cover are not directly comparable. In a further study by Stubenrauch et al. (2010) where climatological zonal means of high cloud cover from various sources (AIRS: 2003–2008, Path-B TOVS: 1987–1995, CALIOP: 2007–2008, ISCCP: 1984–2004) are presented for January and July (Stubenrauch et al., 2010, Fig. 7), we do not only observe that cloud cover in our study shows a realistic behaviour, but also that the cirrus cover increase toward the south pole in July 2008 plotted in Fig. 9 could be realistic since the CALIOP/CALIPSO has the same behaviour. In the global map of average cirrus coverage from ISCCP for 1984–1999 (Stordal et al., 2005, Fig. 1) high values above land are also shown in the Northern Hemisphere in the latitude belt between  $25^{\circ}$  N and  $70^{\circ}$  N. Thus, after all these considerations, it is not clear whether the cirrus cover increase towards the poles observed with MeCiDA and MoCiDA in this study is an algorithmic artifact or a real issue. Apart from this latitude region, the cirrus coverage obtained by MeCiDA2/MoCiDA2 is consistent with recent publications.



## 6.2 MeCiDA vs. MoCiDA: sub-pixel effects

In this section we study the impact of resolution on the detection efficiency. Since MoCiDA is first applied to high resolution data (MODIS) and the resulting  $1 \times 1 \text{ km}^2$  cirrus mask is then projected to the SEVIRI grid, we can investigate the dependency of cirrus detection using SEVIRI data as a function of sub-scale cirrus coverage that can be extracted from MODIS. Generally speaking, we expect MeCiDA's performance to increase with increasing sub-pixel cirrus cover. The result of this investigation is shown in Fig. 10. Here we collected all the data from January and July 2008 to classify those SEVIRI pixels that were identified by MoCiDA as cirrus covered but at the same time as cirrus free by MeCiDA. We built four classes according to SEVIRI sub-pixel cirrus coverage: 0.00–0.25, 0.25–0.50, 0.50–0.75 and 0.75–1.00.

The most populated class is of course the first one with sub-pixel cirrus cover between 0.00 and 0.25: in fact, 40 % of all undetected pixels are covered at most to one quarter by cirrus clouds. The percentage in Fig. 10 decreases then as a function of increasing cirrus coverage, as expected. However, it is surprising that the last three categories are very similar to each other and explain more or less 20 % each of the detection efficiency difference. This statistics further agrees with the observation described in Sec. 6.1, where MoCiDA detects a more or less constant higher amount of cirrus clouds over all latitude bins.

## 6.3 MeCiDA vs. CPO

As a comparison between MoCiDA and CPO has already been performed in Sect. 3.2 discussing Fig. 1, no additional sample scene with the differences between MeCiDA and CPO will be shown here. In fact, MeCiDA and MoCiDA perform very similarly for this granule (see Fig. 8). Thus, we simply refer to Sect. 5.1 for a discussion of Fig. 1b and to Sect. 6.1 for a discussion of Fig. 8. These considerations are still valid here.

As far as the zonal means are concerned, the anomalies observed at latitudes around  $-55^\circ \text{ N}$  in January 2008 and  $+60^\circ \text{ N}$  in July 2008 are evident in the comparison

### Improved cirrus detection for SEVIRI and validation with MODIS

F. Ewald et al.

Title Page

Abstract

Introduction

Conclusions

References

Tables

Figures

⏪

⏩

◀

▶

Back

Close

Full Screen / Esc

Printer-friendly Version

Interactive Discussion



plots of CPO versus MeCiDA (Fig. 11). Here, the CPO product shows much smaller cirrus coverages than MeCiDA1 (black dashed curve). In January (Fig. 11a), differences between  $-30^{\circ}$  N and  $+30^{\circ}$  N are very low and never exceed 0.05. Somewhat larger differences are observed at higher latitudes ( $> 40^{\circ}$  N) where differences are of the order of 0.15. MeCiDA2 (red solid curve) is very similar to CPO and differs from it by at most 0.15 at  $-70^{\circ}$  N or 0.1 at  $+50^{\circ}$  N. In particular, the peak at  $-55^{\circ}$  N has disappeared. In July 2008 (Fig. 11b) the agreement between MeCiDA2 and CPO is even better. While MeCiDA1 showed large disagreement starting at  $45^{\circ}$  N polewards, MeCiDA2 never differs from CPO by more than 0.05 except at  $60^{\circ}$  N where the discrepancy amounts to 0.15. Please notice that this agreement nevertheless does not imply that both algorithms MeCiDA2 and CPO are detecting exactly the same cirrus clouds. In fact, under some circumstances the higher cirrus detection capabilities of CPO due to the higher spatial resolution of MODIS and to the use of solar channels might be balanced by some MeCiDA2 false alarms.

## 7 Conclusions

Due to their special role for climate, it is important to monitor cirrus coverage at the global level. We presented the improved version of the day and night cirrus detection algorithm MeCiDA (Krebs et al., 2007) that uses seven thermal channels of the SEVIRI instrument aboard Met-8 and Met-9. The new algorithm, called MeCiDA2 in contrast to the original version MeCiDA1, can now be applied to the entire MSG/SEVIRI disc and takes into account the viewing angle dependency of the cirrus cloud detection and correctly deals with brightness temperatures in the ozone channel centred at  $9.7 \mu\text{m}$ .

To validate the new algorithm and the impact of the proposed modifications we adapted MeCiDA to Terra/MODIS to exploit the different viewing geometry of this instrument. Furthermore, we compared to the MOD06 Cloud Phase Optical Properties (CPO) product in order to have an independent check of the algorithm performance. In both cases, the data basis consisted in January and July 2008 to consider seasonal

### Improved cirrus detection for SEVIRI and validation with MODIS

F. Ewald et al.

Title Page

Abstract

Introduction

Conclusions

References

Tables

Figures

◀

▶

◀

▶

Back

Close

Full Screen / Esc

Printer-friendly Version

Interactive Discussion

variation. The comparison was performed on a part of the SEVIRI disc between  $-10^{\circ}$  E and  $+20^{\circ}$  E to investigate viewing angle dependence.

We conclude that the consideration of viewing angle dependency and ozone effect strongly reduces false alarm rates, mainly at higher latitudes beyond  $\pm 50^{\circ}$ . Closer to the Equator the performance of MeCiDA has only been slightly affected by the changes. Usually, MeCiDA now detects less cirrus clouds than before. The comparison to CPO reveals that cirrus cloud cover difference between CPO and MeCiDA2 is smaller than 0.1 apart from latitude higher than  $50^{\circ}$  N. MeCiDA2 however only uses thermal information, and is thus a day and night algorithm that can be applied to produce diurnal cycles of cirrus cover.

*Acknowledgements.* We thank NASA for the provision of MODIS data through <http://ladsweb.nascom.nasa.gov/>, EUMETSAT for the provision of SEVIRI data and ECMWF for the reanalysis dataset ERA40. We would also like to extend out exceptional gratitude to Kasper Graf for providing a continuous SEVIRI dataset over the examined regions and Simon Unterstrasser and Richard Keane for the careful review.

## References

- Ackerman, S., Strabala, K., Menzel, W., Frey, R., Moeller, C., and Gumley, L.: Discriminating clear sky from clouds with MODIS, *J. Geophys. Res.*, 103, 32141–32157, 1998. 5279
- Appleman, H.: The formation of exhaust contrails by jet aircraft, *B. Am. Meteorol. Soc.*, 34, 14–20, 1953. 5273
- Atlas, D., Wang, Z., and Duda, D.: Contrails to cirrus – morphology, microphysics, and radiative properties, *J. Appl. Meteorol. Clim.*, 45, 5–19, 2006. 5273
- Aumann, H. H., Chahine, M., Gautier, C., Goldberg, M., Kalnay, E., McMillan, L., Revercomb, H., Rosenkranz, P., Smith, W., Staelin, D., Strow, L., and Susskind, J.: AIRS/AMSU/HSB on the Aqua mission: design, science objectives, data products, and processing systems, *IEEE T. Geosci. Remote*, 41, 253–264, 2003. 5291
- Baum, B., Soulen, P., Strabala, K., King, M., Ackerman, S., Menzel, W., and Yang, P.: Remote sensing of cloud properties using MODIS airborne simulator imagery during SUCCESS. 2. Cloud thermodynamic phase, *J. Geophys. Res.*, 105, 11781–11792, 2000. 5279

## Improved cirrus detection for SEVIRI and validation with MODIS

F. Ewald et al.

Title Page

Abstract

Introduction

Conclusions

References

Tables

Figures



Back

Close

Full Screen / Esc

Printer-friendly Version

Interactive Discussion





## Improved cirrus detection for SEVIRI and validation with MODIS

F. Ewald et al.

Title Page

Abstract

Introduction

Conclusions

References

Tables

Figures

⏪

⏩

◀

▶

Back

Close

Full Screen / Esc

Printer-friendly Version

Interactive Discussion



- Duda, D., Minnis, P., Nguyen, L., and Palikonda, R.: A case study of the development of contrail clusters over the Great Lakes, *J. Atmos. Sci.*, 61, 1132–1146, 2004. 5273
- Hagihara, Y., Okamoto, H., and Yoshida, R.: Development of a combined CloudSat-CALIPSO cloud mask to show global cloud distribution, *J. Geophys. Res.*, 115, D00H33, doi:10.1029/2009JD012344, 2010. 5290
- Jensen, E., Ackerman, A., Stevens, D., Toon, O., and Minnis, P.: Spreading and growth of contrails in a sheared environment, *J. Geophys. Res.*, 103, 31557–31568, 1998. 5273
- Jiang, X., Pawson, S., and Camp, C.: Interannual variability and trends of extratropical ozone. Part I: Northern Hemisphere, *J. Atmos. Sci.*, 65, 3013–3029, 2008a. 5283
- Jiang, X., Pawson, S., and Camp, C.: Interannual variability and trends of extratropical ozone. Part II: Southern Hemisphere, *J. Atmos. Sci.*, 65, 3030–3041, 2008b. 5283
- Kahn, B. H., Chahine, M. T., Stephens, G. L., Mace, G. G., Marchand, R. T., Wang, Z., Barnett, C. D., Eldering, A., Holz, R. E., Kuehn, R. E., and Vane, D. G.: Cloud type comparisons of AIRS, CloudSat, and CALIPSO cloud height and amount, *Atmos. Chem. Phys.*, 8, 1231–1248, doi:10.5194/acp-8-1231-2008, 2008. 5291
- Krebs, W., Mannstein, H., Bugliaro, L., and Mayer, B.: Technical note: A new day- and nighttime Meteosat Second Generation Cirrus Detection Algorithm MeCiDA, *Atmos. Chem. Phys.*, 7, 6145–6159, doi:10.5194/acp-7-6145-2007, 2007. 5272, 5274, 5276, 5280, 5281, 5285, 5287, 5293, 5299, 5300
- Kurzeja, R.: Spatial variability of total ozone at high latitudes in winter, *J. Atmos. Sci.*, 41, 695–697, 1984. 5283
- Mayer, B. and Kylling, A.: Technical note: The libRadtran software package for radiative transfer calculations - description and examples of use, *Atmos. Chem. Phys.*, 5, 1855–1877, doi:10.5194/acp-5-1855-2005, 2005 5280
- Menzel, W. P., Frey, R. A., Zhang, H., Wylie, D. P., Moeller, C. C., Holz, R. E., Maddux, B., Baum, B. A., Strabala, K. I., and Gumley, L. E.: MODIS global cloud-top pressure and amount estimation: algorithm description and results, *J. Appl. Meteorol. Clim.*, 47, 1175–1198, doi:10.1175/2007JAMC1705.1, 2008. 5287
- Minnis, P., Young, D., Garber, D., Nguyen, L., Smith Jr., W., and Palikonda, R.: Transformation of contrails into cirrus during SUCCESS, *Geophys. Res. Lett.*, 25, 1157–1160, 1998. 5273
- Minnis, P., Ayers, J. K., Palikonda, R., and Phan, D.: Contrails, cirrus trends, and climate, *J. Climate*, 17, 1671–1685, 2004. 5273

## Improved cirrus detection for SEVIRI and validation with MODIS

F. Ewald et al.

Title Page

Abstract

Introduction

Conclusions

References

Tables

Figures

⏪

⏩

◀

▶

Back

Close

Full Screen / Esc

Printer-friendly Version

Interactive Discussion

- Platnick, S., King, M., Ackerman, S., Menzel, W., Baum, B., Riedi, J., and Frey, R.: The MODIS cloud products: algorithms and examples from TERRA, *IEEE T. Geosci. Remote*, 41, 459–473, 2003. 5279
- Schmetz, J., Pili, P., Tjemkes, S., Just, D., Kerkmann, J., Rota, S., and Ratier, A.: An introduction to Meteosat Second Generation (MSG), *B. Am. Meteorol. Soc.*, 83, 977–992, doi:10.1175/1520-0477(2002)083<0977:AITMSG>2.3.CO;2, 2002. 5275
- Schmidt, E.: Die Entstehung von Eisnebel aus den Auspuffgasen von Flugmotoren, *Schriften der Deutschen Akademie der Luftfahrtforschung*, 44, 1–15, 1941. 5273
- Schumann, U.: On conditions for contrail formation from aircraft exhausts, *Meteorol. Z.*, 5, 4–23, 1996. 5273
- Stordal, F., Myhre, G., Stordal, E. J. G., Rossow, W. B., Lee, D. S., Arlander, D. W., and Svendby, T.: Is there a trend in cirrus cloud cover due to aircraft traffic?, *Atmos. Chem. Phys.*, 5, 2155–2162, doi:10.5194/acp-5-2155-2005, 2005. 5291
- Stubenrauch, C., Chédin, A., Rädcl, G., Scott, N., and Serrar, S.: Cloud properties and their seasonal and diurnal variability from TOVS path-B, *J. Atmos. Chem.*, 19, 5531–5553, 2006. 5273
- Stubenrauch, C. J., Cros, S., Guignard, A., and Lamquin, N.: A 6-year global cloud climatology from the Atmospheric InfraRed Sounder AIRS and a statistical analysis in synergy with CALIPSO and CloudSat, *Atmos. Chem. Phys.*, 10, 7197–7214, doi:10.5194/acp-10-7197-2010, 2010. 5273, 5291
- Tjemkes, S. A., van de Berg, L., and Schmetz, J.: Warm water vapour pixels over high clouds as observed by Meteosat, *Beitr. Phys. Atmos.*, 70, 15–21, 1997. 5284
- Unterstrasser, S. and Gierens, K.: Numerical simulations of contrail-to-cirrus transition – Part 1: An extensive parametric study, *Atmos. Chem. Phys.*, 10, 2017–2036, doi:10.5194/acp-10-2017-2010, 2010. 5273
- Uppala, S. M., Kållberg, P. W., Simmons, A. J., Andrae, U., Bechtold, V. D. C., Fiorino, M., Gibson, J. K., Haseler, J., Hernandez, A., Kelly, G. A., Li, X., Onogi, K., Saarinen, S., Sokka, N., Allan, R. P., Andersson, E., Arpe, K., Balmaseda, M. A., Beljaars, A. C. M., Berg, L. V. D., Bidlot, J., Bormann, N., Caires, S., Chevallier, F., Dethof, A., Dragosavac, M., Fisher, M., Fuentes, M., Hagemann, S., Hólm, E., Hoskins, B. J., Isaksen, I., Janssen, P. A. E. M., Jenne, R., McNally, A. P., Mahfouf, J.-F., Morcrette, J.-J., Rayner, N. A., Saunders, R. W., Simon, P., Sterl, A., Trenberth, K. E., Untch, A., Vasiljevic, D., Viterbo, P., and Woollen, J.:

## Improved cirrus detection for SEVIRI and validation with MODIS

F. Ewald et al.

Title Page

Abstract

Introduction

Conclusions

References

Tables

Figures

⏪

⏩

◀

▶

Back

Close

Full Screen / Esc

Printer-friendly Version

Interactive Discussion

The ERA-40 re-analysis, Q. J. Roy. Meteor. Soc., 131, 2961–3012, doi:10.1256/qj.04.176, 2005. 5287

Vaughan, M., Young, S., Winker, D., Powell, K. Omar, A., Liu, Z., Hu, Y., and Hostetler, C.: Fully automated analysis of spacebased lidar data: an overview of the CALIPSO retrieval algorithms and data products, in: Laser Radar Techniques for Atmospheric Sensing, edited by: Singh, U. N., Vol. 5575 of Proceedings of the Society of Photo-Optical Instrumentation Engineers (SPIE), 16–30, doi:10.1117/12.572024, 2004. 5273

Winker, D. M., Pelon, J., Coakley, J. A., Ackerman, S. A., Charlson, R. J., Colarco, P. R., Flamant, P., Fu, Q., Hoff, R. M., Kittaka, C., Kubar, T. L., Le Treut, H., McCormick, M. P., Mégie, G., Poole, L., Powell, K., Trepte, C., Vaughan, M. A., and Wielicki, B. A.: The CALIPSO mission: a global 3-D view of aerosols and clouds, B. Am. Meteorol. Soc., 91, 1211–1229, doi:10.1175/2010BAMS3009.1, 2010. 5290

Wylie, D. and Wang, P.: Comparison of cloud frequency data from HIRS and SAGE II, J. Geophys. Res., 102, 29893–29900, 1997. 5273

Wylie, D., Jackson, D., Menzel, W., and Bates, J.: Trends in global cloud cover in two decades of HIRS observations, J. Atmos. Chem., 18, 3021–3031, 2005. 5273

## Improved cirrus detection for SEVIRI and validation with MODIS

F. Ewald et al.

**Table 1.** Met-8/SEVIRI channel numbers and corresponding Terra/MODIS band numbers with effective channel central wavelengths  $\lambda_c$ .

SEVIRI												
Channel	1	2	3	4	5	6	7	8	9	10	11	12
$\lambda_c/\mu\text{m}$	0.64	0.81	1.64	3.92	6.25	7.35	8.70	9.66	10.8	12.0	13.4	0.75
MODIS												
Channel	1	2	6	21–22	27	28	29	30	31	32	33	
$\lambda_c/\mu\text{m}$	0.646	0.857	1.629	3.960	6.752	7.334	8.518	9.737	11.017	12.032	13.359	

[Title Page](#)
[Abstract](#)
[Introduction](#)
[Conclusions](#)
[References](#)
[Tables](#)
[Figures](#)
[⏪](#)
[⏩](#)
[◀](#)
[▶](#)
[Back](#)
[Close](#)
[Full Screen / Esc](#)
[Printer-friendly Version](#)
[Interactive Discussion](#)

**Table 2.** Summary of the six cirrus tests and explanation of the filters used for the MeCiDA from Krebs et al. (2007) (called here MeCiDA1) and changes introduced in the revised cirrus tests that form the current version of the algorithm (called here MeCiDA2). Each individual cirrus test is contributing to the resulting cirrus mask.

	MeCiDA1	Changes in MeCiDA2
	$1a_{n \times n} = [(T_{10.8} - T_{12.0}) - (T_{10.8, \max(n \times n)} - T_{12.0, \max(n \times n)}) > 0.6 \text{ K}]$ and $[T_{7.3, \text{box}(19 \times 19)} - T_{7.3} > 0.5 \text{ K}]$	
Test 1	$1b = [T_{6.2} - T_{7.3} > -12 \text{ K}]$  $1 = [1a_{3 \times 3} \text{ or } 1a_{9 \times 9} \text{ or } 1a_{19 \times 19}] \text{ or } 1b$	$1b = [T_{6.2} - T_{7.3} > (-7.7 - 10.0\mu + 4.5\mu^2) \text{ K}]$
	$2a = [(T_{8.7} - T_{12.0}) - (T_{8.7, \max(19 \times 19)} - T_{12.0, \max(19 \times 19)}) > 1.6 \text{ K}]$ and $[(T_{6.2, \text{box}(19 \times 19)} - T_{6.2}) > 0.5 \text{ K}]$	
Test 2	$2b = (T_{6.2} - T_{7.3}) > -12 \text{ K}$ $2c = (T_{8.7} - T_{10.8}) > 0 \text{ K}$  $2 = [2a \text{ or } 2b \text{ or } 2c]$	$2b = [T_{6.2} - T_{7.3} > (-7.7 - 10.0\mu + 4.5\mu^2) \text{ K}]$
	$3a = [(T_{9.7} - T_{13.4}) - (T_{9.7, \max(19 \times 19)} - T_{13.4, \max(19 \times 19)}) > 3.5 \text{ K}]$ and $[(T_{7.3, \text{box}(19 \times 19)} - T_{7.3}) > 0.5 \text{ K}]$	
Test 3	$3b = (T_{6.2} - T_{7.3}) > -12 \text{ K}$  $3 = [3a \text{ or } 3b]$	$3b = [T_{6.2} - T_{7.3} > (-7.7 - 10.0\mu + 4.5\mu^2) \text{ K}]$
	$4a = [(T_{7.3, \text{box}(15 \times 15)} - T_{7.3}) > 0.5 \text{ K}]$ and $[T_{7.3, \text{gauss}(15 \times 15)} > 0.5 \text{ K}]$	
Test 4	$4b = T_{13.4} < 233 \text{ K}$  $4 = [4a \text{ or } 4b]$	$4a = [(T_{7.3, \text{box}(15 \times 15)} - T_{7.3}) > 0.5 \text{ K}]$ and $[T_{7.3, \text{gauss}(15 \times 15)} > 0.5 \text{ K}]$ and $[T_{13.4} < (219.3 + 49.6\mu - 21.7\mu^2) \text{ K}]$ $4b = T_{13.4} < [T_{13.4} < (199.3 + 49.6\mu - 21.7\mu^2) \text{ K}]$
	$5a = [(T_{6.2} - T_{7.3})_{\text{box}(15 \times 15)} - (T_{6.2} - T_{7.3}) > 1 \text{ K}]$ and $[(T_{6.2} - T_{7.3})_{\text{gauss}(15 \times 15)} > 1 \text{ K}]$ and $[T_{13.4} < 253 \text{ K}]$	
Test 5	$5b = [T_{13.4} < 233 \text{ K}]$  $5 = [5a \text{ or } 5b]$	$5a = [(T_{6.2} - T_{7.3})_{\text{box}(15 \times 15)} - (T_{6.2} - T_{7.3}) > 1 \text{ K}]$ and $[(T_{6.2} - T_{7.3})_{\text{gauss}(15 \times 15)} > 1 \text{ K}]$ and $[T_{13.4} < (219.3 + 49.6\mu - 21.7\mu^2) \text{ K}]$ $5b = [T_{13.4} < (199.3 + 49.6\mu - 21.7\mu^2) \text{ K}]$
	$6a = [(T_{9.7} - T_{13.4}) > -7 \text{ K}]$  and $[T_{13.4} < 258 \text{ K}]$	
Test 6	$6b = T_{13.4} < 243 \text{ K}$  $6 = [6a \text{ or } 6b]$	$6a = [T_{9.7} - T_{10.8} > (-16.0 + 11.3\mu - 1.2\mu^2) \text{ K}]$ $\quad + \Delta T_{\text{corr}}^{\text{O}_3}$ and $T_{13.4} < (224.3 + 49.6\mu - 21.7\mu^2) \text{ K}]$ $6b = T_{13.4} < (209.3 + 49.6\mu - 21.7\mu^2) \text{ K}]$
Filters	$T_{12.0, \max(n \times n)}$ denotes the maximum brightness temperature in an area of $n \times n$ pixels centred around the pixel under consideration. $T_{7.3, \text{box}(n \times n)}$ denotes the average brightness temperature in an area of $n \times n$ pixels centred around the pixel under consideration. $(T_{6.2} - T_{7.3})_{\text{gauss}(15 \times 15)}$ is a Gaussian filter according to Eqs. (2) and (1). $\mu = \cos \theta$ is the cosine of the satellite zenith angle. $\Delta T_{\text{corr}}^{\text{O}_3}$ is computed according to Sect. 4.3.	

## Improved cirrus detection for SEVIRI and validation with MODIS

F. Ewald et al.

Title Page

Abstract

Introduction

Conclusions

References

Tables

Figures

◀

▶

◀

▶

Back

Close

Full Screen / Esc

Printer-friendly Version

Interactive Discussion

## Improved cirrus detection for SEVIRI and validation with MODIS

F. Ewald et al.

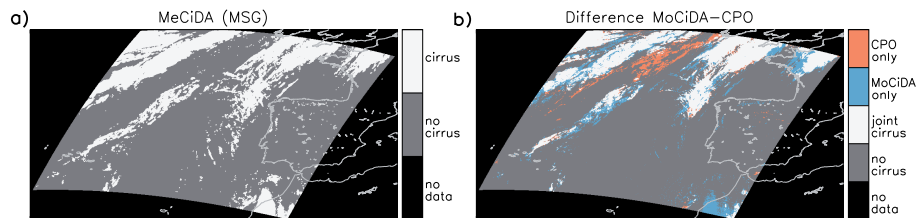
**Table 3.** SEVIRI (i.e. from Krebs et al., 2007) and MODIS threshold value for the MeCiDA1 tests including the BTD  $T_{6.2} - T_{7.3}$ .

Test no.	Test	SEVIRI	MODIS
Test 1,2,3	$T_{6.2} - T_{7.3}$	$> -12\text{K}$	$> -9\text{K}$

[Title Page](#)
[Abstract](#)
[Introduction](#)
[Conclusions](#)
[References](#)
[Tables](#)
[Figures](#)
[⏪](#)
[⏩](#)
[◀](#)
[▶](#)
[Back](#)
[Close](#)
[Full Screen / Esc](#)
[Printer-friendly Version](#)
[Interactive Discussion](#)


## Improved cirrus detection for SEVIRI and validation with MODIS

F. Ewald et al.



**Fig. 1.** Sample cirrus products for 11 January 2009, 12:00 UTC, West of Spain/Portugal. **(a)** Cirrus mask from MeCiDA2 applied to the MSG/SEVIRI slot closest in time. **(b)** Difference between the MoCiDA2 and the CPO cirrus masks (both extracted from MODIS data): red and blue identify cirrus pixels that are detected by CPO or MoCiDA2 alone, white means cirrus pixels that are detected by both algorithms, while grey corresponds to cirrus free pixels.

Title Page

Abstract

Introduction

Conclusions

References

Tables

Figures

◀

▶

◀

▶

Back

Close

Full Screen / Esc

Printer-friendly Version

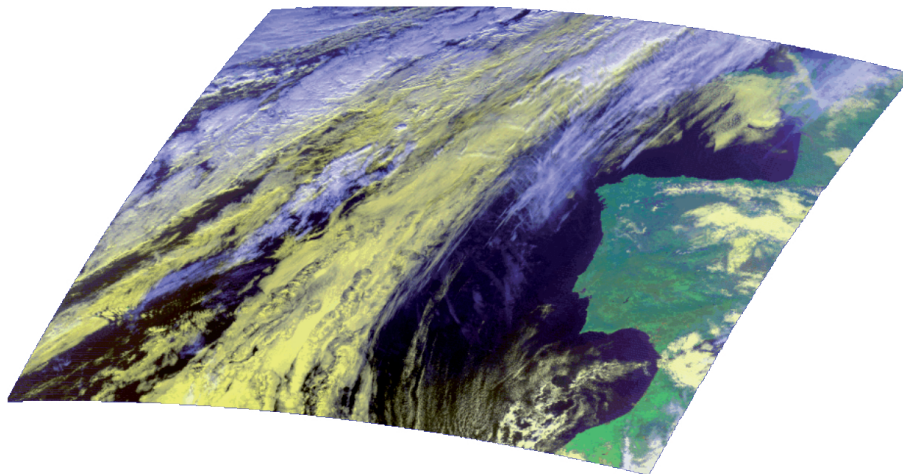
Interactive Discussion



**Improved cirrus  
detection for SEVIRI  
and validation with  
MODIS**

F. Ewald et al.

MODIS → MSG Projection



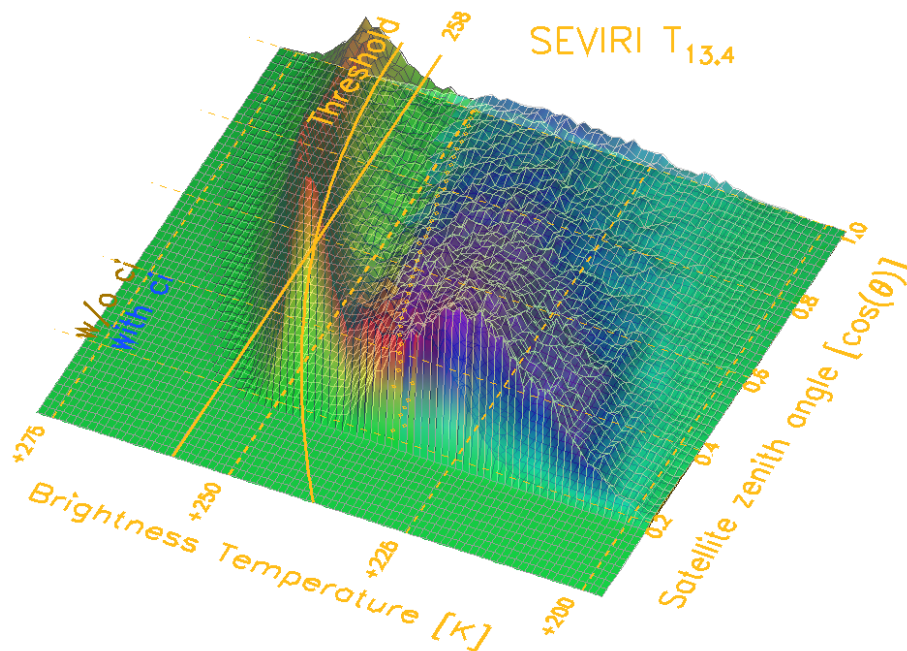
**Fig. 2.** MODIS false colour composite in MSG/SEVIRI projection for 11 January 2009, 12:00 UTC, West of Spain/Portugal.

[Title Page](#)[Abstract](#)[Introduction](#)[Conclusions](#)[References](#)[Tables](#)[Figures](#)[◀](#)[▶](#)[◀](#)[▶](#)[Back](#)[Close](#)[Full Screen / Esc](#)[Printer-friendly Version](#)[Interactive Discussion](#)



## Improved cirrus detection for SEVIRI and validation with MODIS

F. Ewald et al.

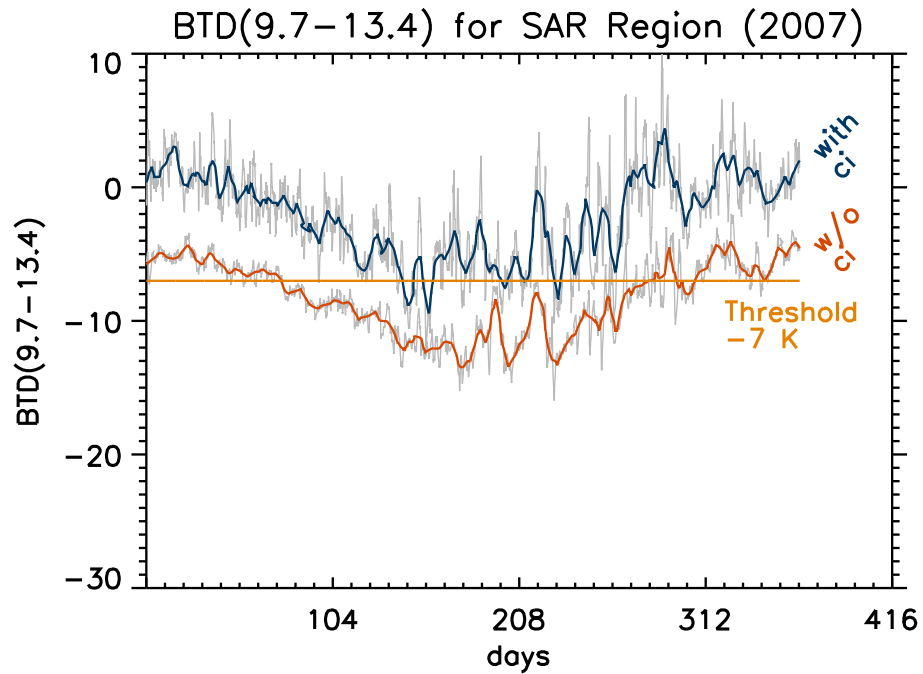


**Fig. 3.** 2-D-histogram of simulated BT of the SEVIRI channel centred at 13.4  $\mu\text{m}$  as a function of the cosine of the satellite zenith angle  $\mu = \cos\theta$ . In addition, the fixed threshold used in MeCiDA Test 6 of 258 K is plotted together with the new  $\mu$  dependent threshold function.

[Title Page](#)[Abstract](#)[Introduction](#)[Conclusions](#)[References](#)[Tables](#)[Figures](#)[◀](#)[▶](#)[◀](#)[▶](#)[Back](#)[Close](#)[Full Screen / Esc](#)[Printer-friendly Version](#)[Interactive Discussion](#)

## Improved cirrus detection for SEVIRI and validation with MODIS

F. Ewald et al.



**Fig. 4.** Mean daily BTD  $T_{9.7} - T_{13.4}$  for those SEVIRI pixels that have been detected as cirrus covered (blue) or cirrus free (red) by MeCiDA Tests 1–5 over SAR as a function of time during the year 2007. Grey curves represent the same BTD but with the full temporal resolution of 15 min.

Title Page

Abstract	Introduction
Conclusions	References
Tables	Figures

⏪	⏩
◀	▶
Back	Close

Full Screen / Esc

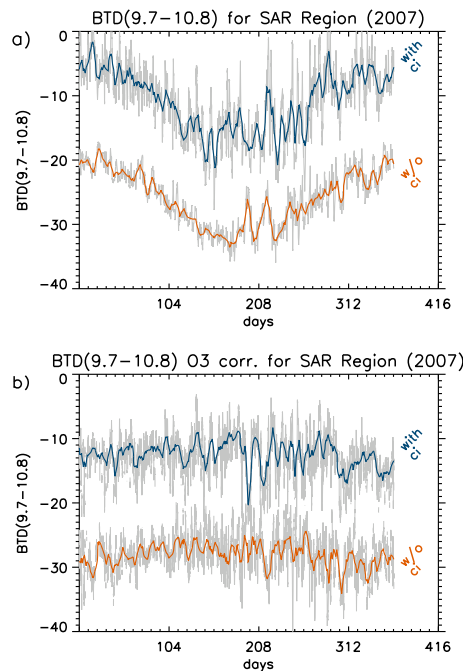
Printer-friendly Version

Interactive Discussion



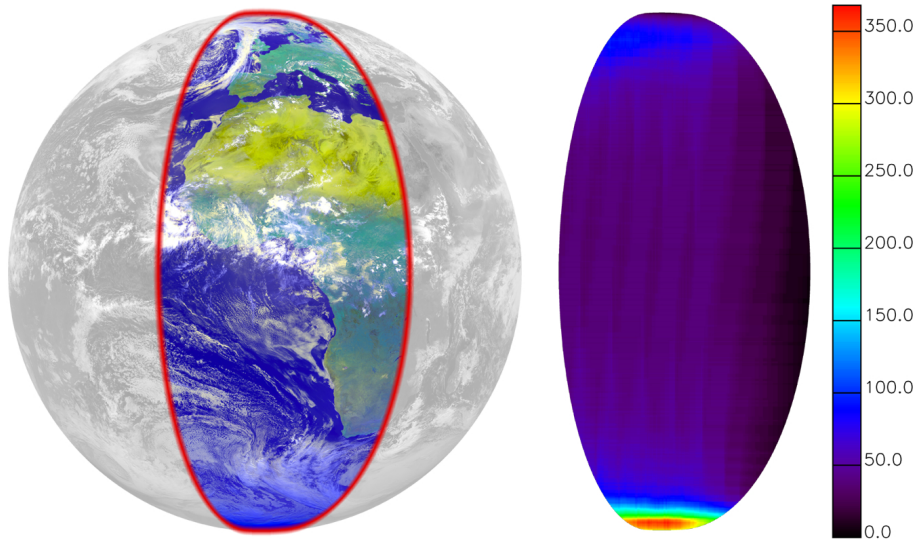
## Improved cirrus detection for SEVIRI and validation with MODIS

F. Ewald et al.



**Fig. 5.** (a) Daily mean of  $T_{9.7} - T_{10.8}$  for MeCiDA Test 1–5 cirrus clouds (blue) and cirrus free pixels (red) averaged over the SAR region as a function of day of the year in 2007. (b) Daily mean of  $T_{9.7} - T_{10.8}$  after correction of the ozone annual cycle for MeCiDA Test 1–5 cirrus clouds (blue) and cirrus free pixels (red) averaged over the SAR region as a function of day of the year in 2007. Grey curves represent the same BTDs but with the full temporal resolution of 15 min.

[Title Page](#)[Abstract](#)[Introduction](#)[Conclusions](#)[References](#)[Tables](#)[Figures](#)[◀](#)[▶](#)[◀](#)[▶](#)[Back](#)[Close](#)[Full Screen / Esc](#)[Printer-friendly Version](#)[Interactive Discussion](#)



**Fig. 6.** Selected region for comparison between cirrus products (left). Numbers of synchronous observations from SEVIRI and MODIS in Januar 2008 (right).

**Improved cirrus detection for SEVIRI and validation with MODIS**

F. Ewald et al.

Title Page

Abstract Introduction

Conclusions References

Tables Figures

◀ ▶

◀ ▶

Back Close

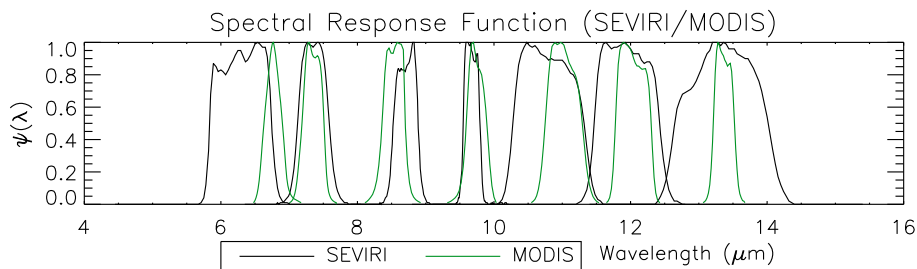
Full Screen / Esc

Printer-friendly Version

Interactive Discussion

**Improved cirrus detection for SEVIRI and validation with MODIS**

F. Ewald et al.

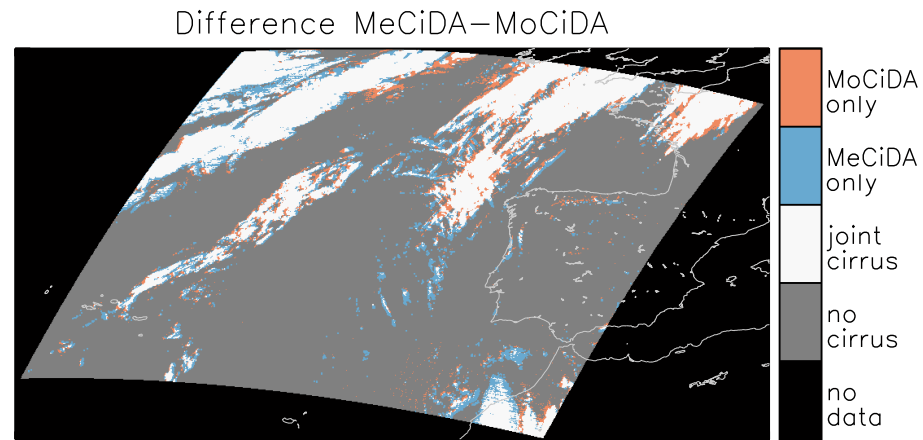


**Fig. 7.** Spectral response functions  $\psi$  of the thermal channels of SEVIRI and MODIS as a function of wavelength  $\lambda$ .

[Title Page](#)[Abstract](#)[Introduction](#)[Conclusions](#)[References](#)[Tables](#)[Figures](#)[◀](#)[▶](#)[◀](#)[▶](#)[Back](#)[Close](#)[Full Screen / Esc](#)[Printer-friendly Version](#)[Interactive Discussion](#)

## Improved cirrus detection for SEVIRI and validation with MODIS

F. Ewald et al.

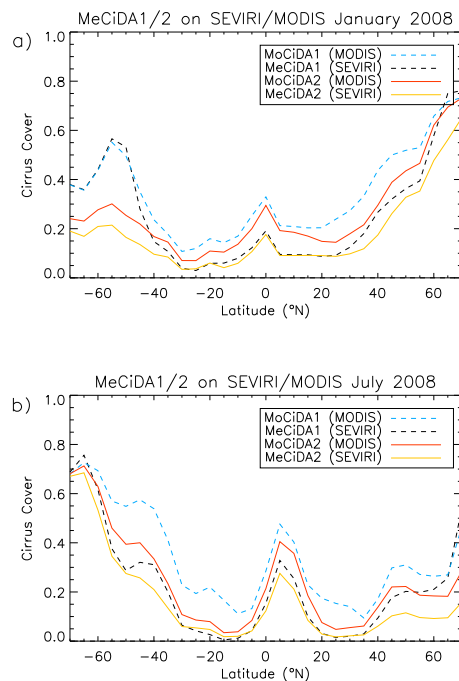


**Fig. 8.** Sample cirrus products for 11 January 2009, 12:00 UTC, West of Spain/Portugal. Difference between the MeCiDA2 and MoCiDA2 cirrus masks: red and blue identify cirrus pixels that are detected by MeCiDA2 or MoCiDA2 alone, white means cirrus pixels that are detected by both algorithms, while grey corresponds to cirrus free pixels.

[Title Page](#)  
[Abstract](#)   [Introduction](#)  
[Conclusions](#)   [References](#)  
[Tables](#)   [Figures](#)  
[◀](#)   [▶](#)  
[◀](#)   [▶](#)  
[Back](#)   [Close](#)  
[Full Screen / Esc](#)  
[Printer-friendly Version](#)  
[Interactive Discussion](#)

## Improved cirrus detection for SEVIRI and validation with MODIS

F. Ewald et al.

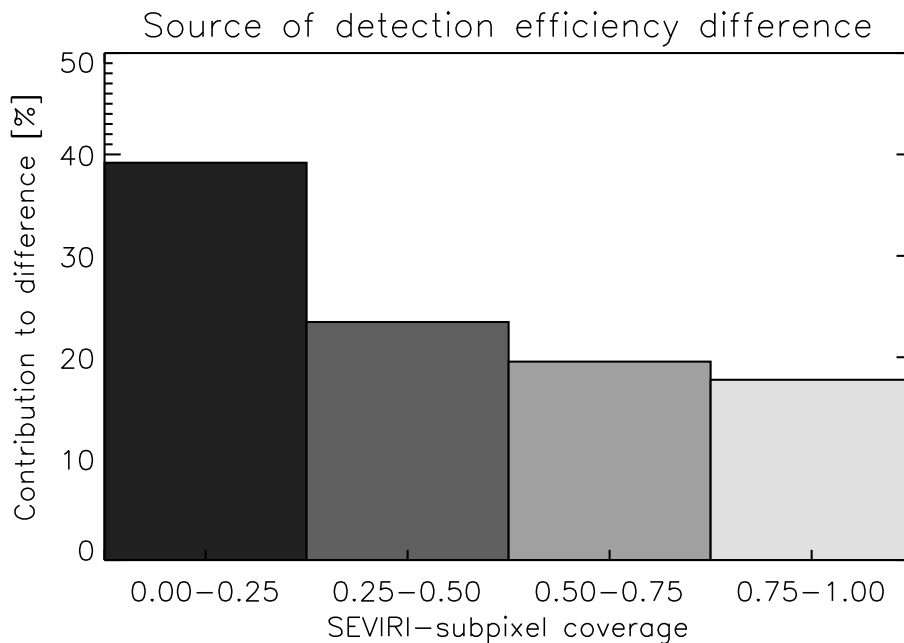


**Fig. 9.** Mean cirrus cloud cover during January 2008 (a) and July 2008 (b) over the selected region derived from SEVIRI (black/yellow) and MODIS (turquoise/red) using MeCiDA and MoCiDA, before (dashed lines) and after (solid lines) the enhancements.

[Title Page](#)[Abstract](#)[Introduction](#)[Conclusions](#)[References](#)[Tables](#)[Figures](#)[◀](#)[▶](#)[◀](#)[▶](#)[Back](#)[Close](#)[Full Screen / Esc](#)[Printer-friendly Version](#)[Interactive Discussion](#)

**Improved cirrus  
detection for SEVIRI  
and validation with  
MODIS**

F. Ewald et al.



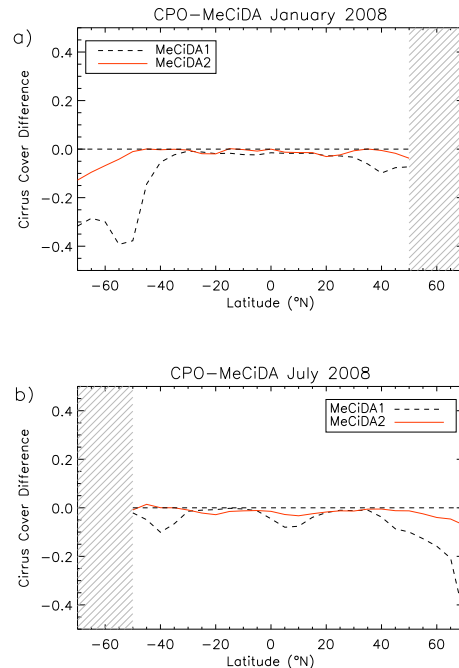
**Fig. 10.** Contribution of subpixel effects to the observed differences between MeCiDA2 and MoCiDA2.

[Title Page](#)[Abstract](#)[Introduction](#)[Conclusions](#)[References](#)[Tables](#)[Figures](#)[⏪](#)[⏩](#)[◀](#)[▶](#)[Back](#)[Close](#)[Full Screen / Esc](#)[Printer-friendly Version](#)[Interactive Discussion](#)



## Improved cirrus detection for SEVIRI and validation with MODIS

F. Ewald et al.



**Fig. 11.** Difference in mean cirrus cloud cover during January 2008 **(a)** and July 2008 **(b)** over the selected region between MeCiDA on SEVIRI and CPO on MODIS before (dashed line) and after (solid line) the enhancements. This comparison was only carried out for daylight granules, due to the usage of solar channels by the CPO product (hatched area excluded).

[Title Page](#)[Abstract](#)[Introduction](#)[Conclusions](#)[References](#)[Tables](#)[Figures](#)[◀](#)[▶](#)[◀](#)[▶](#)[Back](#)[Close](#)[Full Screen / Esc](#)[Printer-friendly Version](#)[Interactive Discussion](#)