

**Super pressure  
balloon response to  
gravity waves**

R. A. Vincent and  
A. Hertzog

This discussion paper is/has been under review for the journal Atmospheric Measurement Techniques (AMT). Please refer to the corresponding final paper in AMT if available.

# The response of super pressure balloons to gravity wave motions

R. A. Vincent<sup>1</sup> and A. Hertzog<sup>2</sup>

<sup>1</sup>Physics Department, University of Adelaide, Adelaide 5005, Australia

<sup>2</sup>Laboratoire de Meteorologie Dynamique, École Polytechnique, Palaiseau, France

Received: 2 December 2013 – Accepted: 2 December 2013 – Published: 13 December 2013

Correspondence to: R. A. Vincent (robert.vincent@adelaide.edu.au)

Published by Copernicus Publications on behalf of the European Geosciences Union.

Title Page

Abstract

Introduction

Conclusions

References

Tables

Figures

⏪

⏩

◀

▶

Back

Close

Full Screen / Esc

Printer-friendly Version

Interactive Discussion



## Super pressure balloon response to gravity waves

R. A. Vincent and  
A. Hertzog

Title Page

Abstract

Introduction

Conclusions

References

Tables

Figures



Back

Close

Full Screen / Esc

Printer-friendly Version

Interactive Discussion

experiences buoyancy forces that act to restore it, so it undergoes natural buoyancy oscillations (NBO) about its EDS. Furthermore, the EDS itself will oscillate in the presence of gravity (buoyancy) waves (GW). By analysing the governing equation of motion through numerical integration Massman (1978) explored the nature of both these factors, including the amplitude and phase response of an SPB to GW-induced sinusoidal variations of the EDS. Nastrom (1980) extended this work by considering the simultaneous wave-induced variations of density and vertical wind. He developed an analytical relationship between the amplitude and phase of a SPB in the presence of a sinusoidal gravity wave. Massman (1981) demonstrated how SPB can be used to study gravity wave activity in the Southern Hemisphere upper troposphere and lower stratosphere. The advantage of using SPB to study gravity waves is that, because the balloons drift with the background wind, they measure the intrinsic frequency (frequency relative to a moving reference frame). It is the intrinsic frequency that appears naturally in the Navier–Stokes equations that determine wave properties, so SPB have an advantage over either ground- or space-based sensors that measure frequency in a ground-based frame (Alexander et al., 2010).

The French Space Agency, CNES, developed and applied 8.5 m and 10 m diameter SPB and, more recently, developed 12 m diameter balloons that can carry payloads of up to 40 kg. These balloons are significantly larger than those used in previous studies and have long flight times of the order of months. A mixture of 8 and 10 m diameter SPB were used to study motions and transport in the Antarctic stratosphere during the Stratéole/Vorcore campaign in 2005 (Hertzog et al., 2007). The long duration of SPB flights during Vorcore proved invaluable in studies of atmospheric gravity waves and the geographical variation of wave sources (Vincent et al., 2007; Boccara et al., 2008; Hertzog et al., 2008; Walterscheid et al., 2012). In the subsequent Concordiasi campaign in 2010, held during the Antarctic late winter and spring, 12 m diameter SPB were used exclusively (Rabier et al., 2010).

A limitation of the Vorcore observations of gravity waves by SPB was the effective 15 min sampling interval imposed by the data transmission rate. The corresponding

**Super pressure  
balloon response to  
gravity waves**R. A. Vincent and  
A. Hertzog

Title Page

Abstract

Introduction

Conclusions

References

Tables

Figures



Back

Close

Full Screen / Esc

Printer-friendly Version

Interactive Discussion



Nyquist period of about 30 min was considerably longer than the approximately 5 min short period cut-off to the gravity wave spectrum due to the Brunt–Väisälä frequency in the lower stratosphere. In subsequent SPB campaigns this limitation was overcome by the implementation of a new communications system which allows a time resolution of about 30 s. Improved time resolution is particularly important for SPB studies in the tropics where convection is predicted to generate waves over a wide range of scales and periods, but with wavelengths between 5 and 50 km and periods between 10 and 60 min being especially prominent (Piani et al., 2000; Beres, 2004; Lane and Moncrieff, 2008).

This paper consists of two parts. In the first part we investigate the response of SPB to gravity wave motions by extending the analysis of Nastrom (1980) of the balloon equation of motion. We introduce a quasi-analytic method for analysing the SPB response to an atmospheric wave. When an SPB responds to a gravity-wave induced displacement of the EDS the equation of motion is such that there is a phase shift between the balloon and the EDS displacement. This phase shift is a factor in the retrieval of important GW parameters, including the intrinsic phase speed i.e. the speed relative to the background wind. Amplitudes and phases derived from the simplified technique are compared with the numerical calculations of the equation of motion of the SPB and it is shown that they agree well. There is a specific emphasis on the response of the newer 12 m SPB, although the results are quite applicable to the smaller diameter balloons. In the second part of the paper we test how well the improved instrumentation on the 12 m SPB is able to detect GW motions and retrieve wave parameters. For this aspect we carried out a large number of statistical realizations that covered the full spectrum of GW frequencies. The computational efficiency of the analytic technique means that it is very suitable for this analysis.

## 2 Theory

Following Nastrom (1980), the governing equation of motion in the vertical direction for a balloon floating in the atmosphere is

$$(M_B + \eta M_a) \frac{\partial^2 \zeta'_b}{\partial t^2} = -g(M_B - M_a) - \frac{1}{2} \rho_a C_d A_B \left( \frac{\partial \zeta'_b}{\partial t} - w' \right) \left| \frac{\partial \zeta'_b}{\partial t} - w' \right| + (M_B + \eta M_a) \frac{\partial w'}{\partial t} \quad (1)$$

where the symbols are defined in Table 1.

Physically, the terms on the right hand side of Eq. (1) can be attributed to the three non-negligible forces acting on the balloon. The first term is the buoyancy force, which acts whenever the balloon is displaced vertically to restore it to its EDS. The second term is the drag force, which acts to resist the motion of the balloon. The third term comes from a dynamic force supplied to the balloon by the surrounding atmosphere when it is in motion. Any other forces acting on the balloon, such as skin friction drag, aerodynamic lift and small scale turbulence are assumed to be small in comparison. The left hand side of the equation is then the net force acting on the balloon.

Equation (1) can be simplified to

$$\frac{\partial^2 \zeta'_b}{\partial t^2} = -\omega_B^2 \zeta'_b + \frac{2}{3} g R - A \left( \frac{\partial \zeta'_b}{\partial t} - w' \right) \left| \frac{\partial \zeta'_b}{\partial t} - w' \right| + \frac{\partial w'}{\partial t} \quad (2)$$

where  $R$  is a wave-induced relative density perturbation and  $A$  is a constant dependent on balloon parameters (Nastrom, 1980). The natural buoyancy oscillation (NBO) frequency  $\omega_B$  is the frequency with which a constant-volume balloon will oscillate about its EDS, and is given by

$$\omega_B^2 = \frac{2g}{3T} \left( \frac{\partial T}{\partial z} + \frac{g}{R_a} \right) \quad (3)$$

### Super pressure balloon response to gravity waves

R. A. Vincent and  
A. Hertzog

Title Page

Abstract

Introduction

Conclusions

References

Tables

Figures

◀

▶

◀

▶

Back

Close

Full Screen / Esc

Printer-friendly Version

Interactive Discussion



with temperature  $T$ , vertical temperature gradient  $\partial T / \partial z$  and atmospheric gas constant  $R_a$ . A balloon of radius  $r$  and drag coefficient  $C_d$  gives  $A$  as

$$A = \frac{C_d}{4r} \quad (4)$$

The first two terms of Eq. (2) originate from the buoyancy term and the third and fourth terms come from the drag and dynamic terms, respectively. This simplification assumes that the balloon is always near to its EDS, so that  $M_a \approx M_B$  at all times. It is also assumed that the balloon is perfectly spherical and that the Boussinesq approximation holds. See Nastrom (1980) for further details.

If the EDS is disturbed by a GW of intrinsic frequency  $\hat{\omega}$  and vertical velocity amplitude  $w_o$ , so that the instantaneous vertical velocity is  $w' = w_o e^{-i\hat{\omega}t}$ , then the wave-induced fractional density perturbation is given by the polarization relation (e.g., Hines, 1960) as

$$R = \frac{\rho'}{\bar{\rho}} = i \frac{N^2}{g\hat{\omega}} w' \quad (5)$$

where  $\bar{\rho}$  is the ambient density,  $N$  is the Brunt–Väisälä frequency, defined as

$$N^2 = \frac{g}{T} \left( \frac{g}{c_p} + \frac{\partial T}{\partial z} \right) \quad (6)$$

and  $c_p$  is specific heat capacity.

For typical values of stratospheric vertical temperature gradients ( $|dT/dz| < 10 \text{ K km}^{-1}$ )  $\omega_B$  is always greater than  $N$ . Hence the natural buoyancy oscillations are always higher in frequency than the highest frequency gravity waves.

## Super pressure balloon response to gravity waves

R. A. Vincent and  
A. Hertzog

Title Page

Abstract

Introduction

Conclusions

References

Tables

Figures

◀

▶

◀

▶

Back

Close

Full Screen / Esc

Printer-friendly Version

Interactive Discussion



### 3 Models

#### 3.1 Numerical model

For a GW of given intrinsic frequency and amplitude, Eq. (2) can be solved numerically to derive  $\zeta'_b$  as a function of time. As an example, consider a case study where the balloon parameters are typical of a 12 m diameter SPB used during the Concordiasi campaign. It is assumed that the atmospheric conditions used are similar to those experienced in Antarctic lower stratosphere in early spring. Table 2 gives the basic atmospheric and balloon parameters. For the purposes of illustration a gravity wave was used with a vertical wind perturbation amplitude of  $w_o = 1 \text{ ms}^{-1}$  and intrinsic period  $\hat{\tau} = 15 \text{ min}$  or angular frequency of  $\hat{\omega} = 6.98 \times 10^{-3} \text{ rad s}^{-1}$ . This produces a fractional density perturbation of  $5.85 \times 10^{-3}$ .

Figure 1 shows the result of numerically solving Eq. (2) using a fourth order Runge–Kutta method. The red line represents the vertical position of the balloon plotted against time. The blue line represents the balloon displacement derived using an analytic method described below.

While the numerical solution is almost sinusoidal it is apparent that higher frequency components are also present. The power spectral analysis shown in Fig. 1 illustrates the absence of even harmonics and the dominance of the first harmonic over the other odd harmonics. The third harmonic is approximately ten percent in magnitude of the first harmonic and the fifth harmonic less than five percent. Higher harmonics are less than one percent of the first harmonic. This result supports the analysis of Nastrom (1980) that shows that only odd harmonics are present in the vertical displacement, with the first harmonic being dominant.

The harmonic content shown in Fig. 1 is typical of the response to short period waves. However, the amplitude of the harmonics decreases as the wave period increases. At a period of 30 min for example, the third harmonic has an amplitude of less than 3 % of the fundamental.

## Super pressure balloon response to gravity waves

R. A. Vincent and  
A. Hertzog

Title Page

Abstract

Introduction

Conclusions

References

Tables

Figures



Back

Close

Full Screen / Esc

Printer-friendly Version

Interactive Discussion



### 3.2 Analytic model

Figure 1 suggests that a linear relationship is a reasonable approximation to the balloon's response to a gravity wave. Hence we now consider the balloon and its environment as a quasi-linear system, treating the gravity wave as the input and the balloon response as the output signal of this system. Using linear system theory there will exist a transfer function (complex frequency response) relating the output to the input. The function is of the form:

$$\frac{\zeta'_b}{\zeta'} = \underline{Z} = |\underline{Z}| e^{i\phi} \quad (7)$$

where  $|\underline{Z}|$  and  $\phi$  are, respectively, the absolute value and phase of the transfer function,  $\underline{Z}$ , and  $\zeta'_b$  is the vertical variation of the balloon about its EDS due to the gravity wave. Here the phase,  $\phi$ , is relative to the time of maximum wave displacement.

Now consider a sinusoidal GW for which the complex amplitude is  $\zeta' = \zeta_0 e^{-i\hat{\omega}t}$ , where  $\zeta_0$  is the wave vertical displacement amplitude. The vertical wind and density perturbation in terms of  $\zeta'$  are, respectively,

$$w' = \frac{\partial \zeta'}{\partial t} = -i\hat{\omega}\zeta_0 e^{-i\hat{\omega}t} = -i\hat{\omega}\zeta', \quad (8)$$

$$R = \frac{N^2}{g}\zeta'. \quad (9)$$

Substituting Eqs. (8) and (9) into Eq. (2) and evaluating the derivatives of  $\zeta'_b$  and  $\zeta'$  gives

$$-\hat{\omega}^2 \zeta'_b = -\omega_B^2 \zeta'_b + \frac{2}{3} N^2 \zeta' - A (-i\hat{\omega}\zeta'_b + i\hat{\omega}\zeta') | -i\hat{\omega}\zeta'_b + i\hat{\omega}\zeta' | - \hat{\omega}^2 \zeta' \quad (10)$$

## Super pressure balloon response to gravity waves

R. A. Vincent and  
A. Hertzog

Title Page

Abstract

Introduction

Conclusions

References

Tables

Figures

⏪

⏩

◀

▶

Back

Close

Full Screen / Esc

Printer-friendly Version

Interactive Discussion





From Eq. (7) and substituting for  $\zeta'_b$  while retaining only the first harmonic in the non-linear drag term leads to

$$\underline{Z} = \frac{\frac{2}{3}N^2 - \hat{\omega}^2 - iA\hat{\omega}^2\zeta_0 Y}{\omega_B^2 - \hat{\omega}^2 - iA\hat{\omega}^2\zeta_0 Y} \quad (11)$$

where  $Y \equiv |1 - \underline{Z}|$ .

A value for  $\underline{Z}$  can be calculated iteratively using an initial value of  $Y = 1$ .  $|\underline{Z}|$  converges to a fractional difference of less than  $10^{-4}$  within 2 or 3 iterations for  $\hat{\omega}^2 \ll \omega_B^2$  (i.e. periods greater than about 10 min) and within 6 steps for  $\hat{\omega} \sim \omega_B$ . Hence, the SPB response to any gravity wave can be obtained using relationship Eq. (7), as illustrated in Fig. 1 where the blue line is the analytic solution. It is apparent that the analytic solution slightly overestimates the numerical solution, but the difference is no more than a few meters.

## 4 Analysis

Further insights into the response of large diameter SPB to wave-induced motions are gained by considering both the numerical and analytic approaches. Here we use the same balloon parameters and atmospheric conditions given in Sect. 3 and derive the response as a function of a number of gravity wave parameters.

Firstly, the value of  $w_0$  was varied over a range from 0.1 to 2.0  $\text{ms}^{-1}$  for the three different GW intrinsic periods of  $\hat{\tau} = 15, 30$  and 60 min, respectively. Figure 2 shows the amplitude ratio,  $|\underline{Z}|$ , and phase computed using both the numerical and analytic methods. For all three periods it is apparent that the two methods give amplitude ratios that do not differ by more than 5% and phases that differ by no more than a few degrees.

Similar results are displayed in Fig. 3. Here the amplitude and phase response derived from the numerical and analytic methods are plotted as a function of wave period for values of  $w_0$  that were fixed at values 0.5, 1.0 and 1.5  $\text{ms}^{-1}$ . The amplitude and

## Super pressure balloon response to gravity waves

R. A. Vincent and  
A. Hertzog

Title Page

Abstract

Introduction

Conclusions

References

Tables

Figures

⏪

⏩

◀

▶

Back

Close

Full Screen / Esc

Printer-friendly Version

Interactive Discussion



phase start to vary markedly as the wave period approaches the buoyancy period of about 5 min. Nevertheless, the relative amplitudes derived by the two methods agree well. Similarly, the phases agree to within at least 5°.

The analytic model also works for wave packets. Figure 4 shows the numerical and analytic solutions for a wave packet of a wave with frequency  $\hat{\omega}$  and a Gaussian envelope defined as

$$\zeta = \zeta_0 e^{-t^2/2t_g^2} \cos(\hat{\omega}t). \quad (12)$$

Here, the wave period is  $\hat{\tau} = 15$  min and the “width” parameter  $t_g = \hat{\tau}$ , so the packet has about 5 oscillations. Again, the numerical response shows some influence of the odd harmonics, as demonstrated in the lower panel of Fig. 4, but otherwise there is good agreement between both solutions.

One benefit of the analytic approach is that it gives insight into the SPB response as a function of wave frequency. For example, from Eq. (11) it is apparent that for  $\hat{\omega}^2 \ll N^2$  that  $|\underline{Z}| \rightarrow 2N^2/3\omega_B^2 \equiv |Z|_{\text{EDS}}$ . This limiting value, when the balloon is on its EDS, has a numerical value of  $|Z|_{\text{EDS}} \sim 0.25$  with the temperature gradient used here. Similarly, the phase limit is  $\phi \rightarrow 0$ . These are the limiting values evident in Figs. 2 and 3 and they correspond to the behavior of a perfect isopycnic balloon.

By manipulating Eq. (11) it is straightforward to show that

$$\tan \phi = \frac{(\frac{2}{3}N^2 - \omega_B^2)A\hat{\omega}^2\zeta_0 Y}{(\frac{2}{3}N^2 - \hat{\omega}^2)(\omega_B^2 - \hat{\omega}^2) + (A\hat{\omega}^2\zeta_0 Y)^2}. \quad (13)$$

Since  $2/3N^2 < \omega_B^2$  the numerator in Eq. (13) is negative. The denominator is always positive, which means that  $\phi$  is always negative and the balloon displacement lags the wave displacement. These results show that a SPB starts to depart substantially from its EDS for wave periods less than about 10 min (i.e. for  $\hat{\omega} \gtrsim N/2$ ).

**Super pressure balloon response to gravity waves**

R. A. Vincent and  
A. Hertzog

Title Page

Abstract

Introduction

Conclusions

References

Tables

Figures

◀

▶

◀

▶

Back

Close

Full Screen / Esc

Printer-friendly Version

Interactive Discussion



Two approximations give further insight into balloon behavior. First, in the low frequency limit when  $\hat{\omega}^2 \ll N^2$

$$\tan \phi \rightarrow \frac{(\frac{2}{3}N^2 - \omega_B^2)A\hat{\omega}^2 \zeta_0 Y}{\frac{2}{3}N^2 \omega_B^2}, \quad (14)$$

5 which shows that the phase is proportional to  $\hat{\omega}^2 \zeta_0 = \hat{\omega} w_0$ , all other parameters remaining constant. Hence the phase departures become greater for larger wave amplitudes and shorter periods, as seen in Fig. 2.

Second, when  $\hat{\omega} \sim N$ , then

$$\tan \phi \approx \frac{(\frac{2}{3}N^2 - \omega_B^2)}{A\hat{\omega}^2 \zeta_0 Y} \quad (15)$$

so now the phase departure is greater for smaller amplitude waves, as observed in Fig. 3.

Equations (14) and (15) also show that  $\tan \phi \propto A \propto r^{-1}$  when  $\hat{\omega}^2 \ll N^2$  and  $\tan \phi \propto A^{-1} \propto r$  when  $\hat{\omega} \sim N$ . So at lower frequencies the phase shifts will be greater for smaller balloons for a given wave amplitude, while the opposite is true when the wave frequency is near  $N$ . Finally, without going into details, it is straightforward to show that for  $\hat{\omega} \sim N$  that  $|\underline{Z}| \propto r$ .

The findings discussed above have ramifications for SPB measurements of gravity waves and the retrieval of important wave parameters, such as momentum flux. This issue is discussed further in the next section.

## 5 Simulations and retrieval of gravity wave parameters

Boccara et al. (2008) described a methodology by which SPB observations made during the Vorcore campaign could be analysed to obtain gravity wave characteristics. To

### Super pressure balloon response to gravity waves

R. A. Vincent and  
A. Hertzog

Title Page

Abstract

Introduction

Conclusions

References

Tables

Figures

⏪

⏩

◀

▶

Back

Close

Full Screen / Esc

Printer-friendly Version

Interactive Discussion



## Super pressure balloon response to gravity waves

R. A. Vincent and  
A. Hertzog

Title Page

Abstract

Introduction

Conclusions

References

Tables

Figures

◀

▶

◀

▶

Back

Close

Full Screen / Esc

Printer-friendly Version

Interactive Discussion

test the methodology a series of Monte Carlo-type simulations were made that mimicked the SPB observations of GW-induced perturbations in pressure and horizontal balloon displacement. It was assumed that waves occurred in packets and a wavelet analysis technique was used to detect the packets in space and time and so to estimate the wave parameters.

In the Boccara et al. (2008) simulations, waves were allowed to propagate in random directions in the horizontal, but it was assumed that all waves propagated energy and momentum upward. Using the associated errors in the measured meteorological parameters and by repeating the simulations many times they were able to estimate the uncertainties and biases in the retrieved GW parameters, such as momentum flux. Briefly, it was found that, the horizontal direction of wave propagation was accurately retrieved but that momentum fluxes were somewhat underestimated.

Here we make use of the techniques described in Sect. 3 above to accurately model the SPB displacements and repeat the Boccara et al. (2008) simulations, but with the measurement parameters and uncertainties appropriate to the Concordiasi campaign SPB observations. There were important differences between the Vorcore and Concordiasi observations which make the later measurements of wave fluxes more accurate, viz.:

- Observations were made at 30 s intervals in Concordiasi, but only at 15 min intervals in Vorcore. Hence, in Concordiasi the full spectrum of GW motions from the between the Brunt–Vaisala ( $\sim 5$  min) and inertial ( $\sim 13$  h) periods could be studied, whereas in Vorcore the measurements were restricted to periods greater than 1 h (Hertzog et al., 2008).
- More sensitive GPS measurements were available on the SPB during Concordiasi than in Vorcore, with Table 3 summarizing the instrumental uncertainties. Most importantly, it was possible to measure directly the vertical displacement of the balloons with an accuracy improved by a factor of 10 compared to the previous campaign. Having direct measurements of vertical displacement means that

momentum fluxes can be derived without using the indirect and less accurate method used in Boccara et al. (2008), as discussed below.

## 5.1 Simulations

To test our retrievals of gravity wave parameters a large number of simulated SPB observations was made and then analysed and the results compared with the original input parameters. Each simulation produced a notional 10 day time series with a basic 30 s time sample period. The balloons were assumed to drift eastward with a constant zonal wind speed of  $10 \text{ ms}^{-1}$  at a latitude of  $60^\circ \text{ S}$ , so that, without any wave perturbations, there was a steady change with time in the zonal position, but not in the meridional.

Time series were of the SPB observables: pressure ( $\bar{p} + p'_T$ ), temperature ( $\bar{T} + T'_T$ ), zonal and meridional position ( $\bar{x} + x', y'$ ) and vertical balloon displacement ( $\zeta'_b$ ) were then synthesised. Here, an overbar indicates the ambient value while the primed value indicates the wave-induced perturbation. It should be noted that the pressure and temperature perturbations are a combination of the relevant wave perturbation and of the pressure and temperature changes due to the vertical displacement of the balloon in the presence of background gradients i.e.

$$p'_T = p' + \frac{d\bar{p}}{dz} \zeta'_b \quad (16)$$

$$T'_T = T' + \frac{d\bar{T}}{dz} \zeta'_b \quad (17)$$

Wave packets for a general wave parameter  $\psi'$  were derived with the form

$$\psi' = \text{Re} \left( \underline{\psi} e^{-\frac{t^2}{2t_g}} e^{i(kx + ly + mz - \hat{\omega}t)} \right) \quad (18)$$

### Super pressure balloon response to gravity waves

R. A. Vincent and  
A. Hertzog

Title Page

Abstract

Introduction

Conclusions

References

Tables

Figures

◀

▶

◀

▶

Back

Close

Full Screen / Esc

Printer-friendly Version

Interactive Discussion



where  $\text{Re}$  means the real part,  $\underline{\psi}$  is the complex wave perturbation amplitude derived from the gravity wave polarization relationships,  $l, k$  and  $m$  are the zonal, meridional and vertical wavenumber, respectively. The basic methodology for each simulation is:

1. First, choose  $\hat{\omega}$  from a uniform random distribution in the range  $f < \hat{\omega} < N$ .
2. Then choose the intrinsic phase speed,  $\hat{c}$ , and direction of propagation,  $\theta$  (anticlockwise from east) from uniform random distributions in the ranges  $0 \leq \hat{c} \leq 100 \text{ ms}^{-1}$  and  $0 \leq \theta < 360^\circ$ . The zonal and meridional wavenumbers are then derived from  $k = k_h \cos \theta$  and  $l = k_h \sin \theta$ , where  $k_h = \hat{\omega} / \hat{c}$ .
3. The vertical wavenumber is derived from the dispersion equation

$$|m| = \sqrt{\frac{N^2 - \hat{\omega}^2}{\hat{\omega}^2 - f^2} k_h^2 - \frac{1}{4H^2}}, \quad (19)$$

where  $H$  is the density scale height. In contrast to Boccara et al. (2008), the sign of  $m$  is set randomly, so that  $-|m|$  ( $+|m|$ ) means a wave with an upward (downward) group velocity.

4. The complex wave amplitudes are then computed. In order to make the simulations as realistic as possible, the horizontal perturbation velocity aligned along the direction of propagation,  $u'_{\parallel}$ , was first derived at the appropriate  $\hat{\omega}$  based on the mean horizontal wind spectrum derived from the actual SPB observations. Other wave parameters,  $u', v', w', p', T'$  are then derived from the GW polarization relations (Fritts and Alexander, 2003, 2012).
5. The vertical displacement of the SPB,  $\zeta'_b$ , is then computed from the wave vertical displacement,  $\zeta' = iw' / \hat{\omega}$ , using either of the methods discussed in Sect. 3.
6. Finally, the total pressure and temperature values were computed from Eqs. (16) and (17) and time series of all observables computed and saved for later analysis.

## Super pressure balloon response to gravity waves

R. A. Vincent and  
A. Hertzog

Title Page

Abstract

Introduction

Conclusions

References

Tables

Figures

◀

▶

◀

▶

Back

Close

Full Screen / Esc

Printer-friendly Version

Interactive Discussion



The above procedure was repeated 1000 times so that the retrievals of wave parameters could be tested over the complete spectrum of wave frequencies and propagation directions.

## 5.2 Retrievals

5 The formulae used to retrieve the wave characteristics from the balloon observations are based on those of Boccara et al. (2008). However, their work only dealt with hydrostatic waves and used only pressure measurements to infer the balloon vertical displacements. The two improvements achieved during the recent Concordiasi campaign (i.e., higher sampling rate and better precision of GPS vertical positions) enable  
 10 us to relax these constraints, and extend the previous formulae. In the following description of the wave characteristics retrieval algorithm, we focus on its novel features and only briefly mention those that have not changed, for which Boccara et al. (2008) should be consulted.

As stated previously, the balloon observables are the 3-D position, pressure ( $p$ ), and  
 15 temperature ( $T$ ). At first, the zonal and meridional velocities ( $u$  and  $v$ , respectively) are computed by centered finite differences from the horizontal positions. The density ( $\rho$ ) is obtained using the perfect gas law:

$$\rho = \frac{p}{R_a T}. \quad (20)$$

20 A flight-mean density ( $\bar{\rho}$ ) and pressure ( $\bar{p}$ ) are computed, and the total pressure perturbation is obtained from the latter as  $p'_T = p - \bar{p}$ . Similarly, the perturbations in zonal and meridional velocities ( $u'$  and  $v'$ , respectively) are obtained as departures from the flight mean values. The Eulerian pressure perturbation ( $p'$ ) is then estimated from the total pressure perturbation:

$$25 \quad p' = p'_T + \bar{\rho} g \zeta'_b, \quad (21)$$

## Super pressure balloon response to gravity waves

R. A. Vincent and  
A. Hertzog

Title Page

Abstract

Introduction

Conclusions

References

Tables

Figures

◀

▶

◀

▶

Back

Close

Full Screen / Esc

Printer-friendly Version

Interactive Discussion



## Super pressure balloon response to gravity waves

R. A. Vincent and  
A. Hertzog

Title Page

Abstract

Introduction

Conclusions

References

Tables

Figures

◀

▶

◀

▶

Back

Close

Full Screen / Esc

Printer-friendly Version

Interactive Discussion

which is the reciprocal of Eq. (16) assuming hydrostatic equilibrium for the background atmosphere. Note here that the balloon vertical displacement ( $\zeta'_b$ ) is simply the departure from the flight-mean altitude. In particular, no assumption is made at this stage about the balloon flying at constant density.

A complex Morlet wavelet transform (Torrence and Compo, 1998) is then applied to all timeseries ( $u'$ ,  $v'$ ,  $\zeta'_b$ ,  $\rho'_T$ ,  $\rho'$ ). From now on, all the equations in this section refer to the complex amplitudes of the wavelet coefficients, which are denoted with a tilde over the perturbations (e.g.  $\tilde{u}$ ). These coefficients correspond to the decomposition of the wave signals in small  $\Delta\hat{\omega} - \Delta t$  blocks in the intrinsic frequency/time domain. The wavelet set of frequencies are chosen to match the range of gravity-wave intrinsic frequencies (i.e., from  $f$  to  $N$ ).

As in Boccara et al. (2008),  $\theta$  is determined as the angle for which the modulus of the horizontal wind perturbation projected on that direction is maximized.  $\theta$  is thus found with a  $180^\circ$  ambiguity, which is resolved later on.

The intrinsic phase speed in the wave direction of propagation is readily inferred from the polarization relation (e.g., Fritts and Alexander, 2012):

$$\tilde{p} = \bar{\rho} \hat{c} \delta_- \tilde{u}_{\parallel} \quad (22)$$

where  $\delta_- = 1 - f^2/\hat{\omega}^2$ . Hence,  $\hat{c}$  is estimated as:

$$\hat{c} = \frac{1}{\bar{\rho} \delta_-} \frac{\text{Re}(\tilde{p} \tilde{u}_{\parallel}^*)}{\tilde{u}_{\parallel}^2} \quad (23)$$

where the  $\tilde{u}_{\parallel}^*$  denotes the complex conjugate of  $\tilde{u}_{\parallel}$ .

To compute the wave momentum flux, we assume that the balloon vertical displacement is that of a perfect isopycnic tracer. As previously discussed, this will be a source of error when the balloon departs from this ideal behavior, i.e. when  $\hat{\omega} \rightarrow N$ . Yet this assumption enables us to relate the balloon vertical displacements to those of air parcels.



In particular, the Lagrangian component of the pressure disturbance ( $\frac{d\bar{\rho}}{dz} \zeta'_b$ ) can then be related to the Eulerian value:

$$\frac{d\bar{\rho}}{dz} \zeta'_b = \left( \text{im}H - \frac{1}{2} \right) \left( 1 + \frac{\hat{\omega}^2}{N^2 - \hat{\omega}^2} \right) \bar{\rho} \quad (24)$$

5 Note that  $H$  is the density scale height. This equation is obtained in the same manner and is equivalent to Eq. (9) in Boccara et al. (2008), but includes in the second bracket an additional term associated with non-hydrostatic waves. Similarly, we use the full non-hydrostatic polarization relation between the horizontal and vertical velocity disturbances:

$$10 \quad \tilde{w} = - \left( \frac{\hat{\omega}^2 - f^2}{N^2 - \hat{\omega}^2} \right) \frac{m + i/2H}{k_h} \tilde{u}_{\parallel} \quad (25)$$

which, with the help of Eq. (24), enables us to relate the wave momentum flux from the balloon observables:

$$15 \quad \text{Im}(\bar{\rho}_T \tilde{u}_{\parallel}^*) = -\bar{\rho}H \frac{N^2}{\hat{\omega}} \text{Re}(\tilde{u}_{\parallel}^* \tilde{w}) \quad (26)$$

where  $\text{Im}(z)$  stands for the imaginary part of  $z$ . Equation (26) turns out to be the same equation as the hydrostatic version of Boccara et al. (2008). We require here that the momentum flux be positive, which resolves the  $180^\circ$  ambiguity in  $\theta$ , i.e. a sign switch of  $\tilde{u}_{\parallel}$ .

20 The vertical wavenumber of the wave packets can be inferred from a combination of Eqs. (22) and (25):

$$m = -\bar{\rho}^2 \hat{c} \delta_- \left( \frac{N^2 - \hat{\omega}^2}{\hat{\omega}} \right) \frac{\text{Re}(\tilde{u}_{\parallel}^* \tilde{w})}{\bar{\rho}^2} \quad (27)$$

## Super pressure balloon response to gravity waves

R. A. Vincent and  
A. Hertzog

Title Page

Abstract

Introduction

Conclusions

References

Tables

Figures

◀

▶

◀

▶

Back

Close

Full Screen / Esc

Printer-friendly Version

Interactive Discussion





start to breakdown when packet amplitudes fall below some critical value. The procedures described above allow the limitations of the SPB momentum flux measurements and the uncertainties of other wave parameter to be explored.

In order to test the various factors that influence the accuracy of the SPB flux measurements a series of preliminary investigations were conducted. Outcomes of trials that do not contain instrumental noise indicate the influence of the wavelet analysis technique and of the retrieval algorithm. Repeating the analysis of the same dataset, but with noise now included, then shows the effects of instrumental noise. Results for one such comparison are illustrated in Fig. 5. Here a wavepacket of the form

$$u'_{\parallel} = u_0 e^{-\hat{t}^2/2\hat{\tau}^2} \cos(\hat{\omega}t) \quad (31)$$

was used, where  $\hat{t} = 2\pi/\hat{\omega}$ . Other wave parameters were derived via the GW polarization relations as the packet amplitude,  $u_0$ , was changed systematically from 0.001 to 10  $\text{ms}^{-1}$ . In this example values of  $\hat{t} = 60 \text{ min}$ ,  $\hat{c} = 40 \text{ ms}^{-1}$  and  $\theta = 300^\circ$  were used, but the conclusions are quite general.

Figure 5a shows that  $u'w'$  is determined well for values of  $u_0 \gtrsim 0.05 \text{ ms}^{-1}$  for trials both with and without noise. In the case of  $\hat{c}$  and of  $\theta$  the same situation applies for the no noise case, but the effects of instrumental noise become apparent for values of  $u_0 \lesssim 0.2 \text{ ms}^{-1}$ . Similar outcomes were found for other wave parameters, such as wavelength, which indicates that all wave parameters can be successfully retrieved if the velocity amplitudes are above a threshold of  $u_0 \sim 0.2 \text{ ms}^{-1}$ , although  $u'w'$  can be reliably determined to lower values.

This threshold was then applied to the full analysis. In the results discussed below 1000 simulations were used. Deriving and then retrieving data from this number of simulations is quite time consuming, so the analytic method was used to determine  $\zeta'_b$ , since the results are similar to the more time consuming numerical technique. Figures 6 and 7 show plots of retrievals of GW parameters from datasets that either include instrumental noise (lower panels) or no noise (upper panels). Results color coded in red and blue denote waves with  $m < 0$  and  $m > 0$ , respectively.

## Super pressure balloon response to gravity waves

R. A. Vincent and  
A. Hertzog

Title Page

Abstract

Introduction

Conclusions

References

Tables

Figures



Back

Close

Full Screen / Esc

Printer-friendly Version

Interactive Discussion



Simulations of momentum flux show very good comparisons between the input and output values at all periods greater than  $\sim 10\text{--}20$  min (Fig. 6a and d). The effects of instrumental noise are minimal. However, it is clear that there are systematic differences between the input and retrieved values at short periods. To understand why, consider Eq. (26), which can be expressed using Eq. (15) from Boccara et al. (2008), as

$$\text{Re}(\tilde{u}_{\parallel}^* \tilde{w}) = -\frac{1}{\bar{\rho}g} \frac{(g/R + \partial\bar{T}/\partial z)}{(g/c_p + \partial\bar{T}/\partial z)} \text{Im}(\tilde{\rho}_T \tilde{u}_{\parallel}^*), \quad (32)$$

which in turn can be expressed as

$$\begin{aligned} \text{Re}(\tilde{u}_{\parallel}^* \tilde{w}) &= -\frac{1}{\bar{\rho}g} \frac{3\omega_B^2}{2N^2} \text{Im}(\tilde{\rho}_T \tilde{u}_{\parallel}^*) \\ &= -\frac{1}{\bar{\rho}g|Z|_{\text{EDS}}} \text{Im}(\tilde{\rho}_T \tilde{u}_{\parallel}^*) \end{aligned} \quad (33)$$

where  $|Z|_{\text{EDS}}$  was defined in Sect. 4. So the systematic deviations in retrieved flux at short periods mark the departure of the balloon off its EDS.

The retrievals of phase speed and direction are also excellent, especially in the non-noisy situations (Fig. 6b and c), but they show some systematic differences when wave frequencies are near  $f$  and  $N$ , especially when instrumental noise is included (Fig. 6e and f). For  $\theta$ , when  $\hat{\omega} \sim f$  the wind perturbation hodograph is almost circular, which makes the precise determination of direction of propagation more difficult. This accounts for the small spread in values of  $\theta$  near  $f$ . While the changes in  $\theta$  are small (no more than a few degrees), the variations in  $\hat{c}$  are proportionately larger at both ends of the spectrum. Figure 7 shows that similar systematic deviations from input values are evident at short and long periods in other important wave parameters.

There are a number of reasons why the retrieved values may show a bias at both short and inertial periods. Firstly, the retrieval analysis assumes that the SBP is moving

**Super pressure balloon response to gravity waves**

R. A. Vincent and  
A. Hertzog

<a href="#">Title Page</a>	
<a href="#">Abstract</a>	<a href="#">Introduction</a>
<a href="#">Conclusions</a>	<a href="#">References</a>
<a href="#">Tables</a>	<a href="#">Figures</a>
<a href="#">◀</a>	<a href="#">▶</a>
<a href="#">◀</a>	<a href="#">▶</a>
<a href="#">Back</a>	<a href="#">Close</a>
<a href="#">Full Screen / Esc</a>	
<a href="#">Printer-friendly Version</a>	
<a href="#">Interactive Discussion</a>	



on an isopycnic surface, but the SPB departs significantly from its EDS at short periods, as illustrated in Fig. 3. In particular, it is the phase variations in  $\underline{Z}$  that vary most rapidly with frequency for  $N > \hat{\omega} > N/2$ , and produce the systematic bias.

A second, more subtle, effect is caused by the use of wave packets in the simulations. Packets described by Eq. (31) have a width in frequency space of  $\Delta\omega \sim \hat{\omega}$ . When either  $\hat{\omega} \sim N$  or  $\hat{\omega} \sim f$  the wave packets will project onto some wavelet coefficients associated with frequencies greater than  $N$  or less than  $f$ . Furthermore, in this situation factors such as  $(N^2 - \hat{\omega}^2)$ ,  $(\hat{\omega}^2 - f^2)$  or  $\delta_-$ , which appear in almost all expressions used to retrieve the wave parameters, reverse sign thereby accentuating the effect. Nevertheless, these “non-gravity wave” coefficients are retained in the retrieval process provided that the central frequency of the wave packet is located between  $N$  and  $f$ . If they are discarded then a significant fraction of the wave momentum flux is lost.

Another factor in the degradation of performance near  $N$  is the effect of instrumental noise (e.g. Fig. 6e) acting in concert with the change in wave amplitude with frequency in the simulations. As noted in (iv) above, the starting value of  $u_{\parallel}$  was derived from the observed spectrum of horizontal kinetic energy, which scales as  $\sim \hat{\omega}^{-2}$ . Hence,  $u_{\parallel}$ , is smaller at higher frequencies, shorter periods. Furthermore, the KE spectrum itself was derived from the average over all flights, which means that wave amplitudes for specific wave packets at a given frequency are probably underestimated, and are therefore more likely to be noisier than they would be in practice. A simple test in which the wave amplitudes input into the retrieval process were increased by a factor of 3 confirmed the latter hypothesis. It showed that the random variations at short periods evident in, say, Fig. 6e had almost disappeared.

Finally, it is stressed that the important momentum flux parameter is the one least influenced by noise. This supports the simulations shown in Fig. 5a, where values of  $u'w'$  are recovered well down to small values of  $u_0$ . Momentum flux and wave propagation direction are also the two parameters that do not contain frequency dependent terms such as  $\delta_-$ , which explains the retrieval of these parameters over a wider frequency range.

## Super pressure balloon response to gravity waves

R. A. Vincent and  
A. Hertzog

[Title Page](#)[Abstract](#)[Introduction](#)[Conclusions](#)[References](#)[Tables](#)[Figures](#)[⏪](#)[⏩](#)[◀](#)[▶](#)[Back](#)[Close](#)[Full Screen / Esc](#)[Printer-friendly Version](#)[Interactive Discussion](#)

## Super pressure balloon response to gravity waves

R. A. Vincent and  
A. Hertzog

Title Page

Abstract

Introduction

Conclusions

References

Tables

Figures

◀

▶

◀

▶

Back

Close

Full Screen / Esc

Printer-friendly Version

Interactive Discussion



Table 4 summarizes the statistics of the retrievals of important wave parameters. Except for the intrinsic and ground-based period ratios, the results for the whole wave spectrum and the more restricted frequency range  $N/2 \gtrsim \hat{\omega} \gtrsim 1.5f$  are included. For the reasons discussed above, it is the latter frequency range that provides the more realistic results. For the wave periods the median values of the retrieved to input values are included as well as the mean values. For the intrinsic period the median and means are identical and show that the recovered values slightly underestimate the true values. The mean values of the ground-based periods are biased by some outliers, and the median values give a more accurate indication of the accuracy of the retrieved values. Overall, the wave parameters are well recovered.

## 6 Conclusions

Super pressure balloons provide the only direct way to measure momentum fluxes and other important wave parameters in terms of intrinsic frequency and phase speed. Building on the work of Nastrom (1980) and others we analyze the response of an SPB to vertical displacements induced by gravity waves. Using the known uncertainties of the various instruments carried on the latest versions of SPB developed by CNES we estimate the accuracy to which fluxes and other important wave parameters can be measured as a function of wave amplitude. The analysis is particularly focussed on SPB operating in the stratosphere.

Both numerical and quasi-analytic techniques are used, with the analytic technique giving particular insight into the SPB response as a function of wave frequency. It is shown that the response is well behaved for intrinsic wave frequencies lower than about  $N/2$ . At low frequencies the ratio of the balloon vertical displacement to the wave displacement has a limiting value determined solely by atmospheric temperature and its gradient. Numerically the value is about 0.25 for conditions in the Antarctic springtime stratosphere. At frequencies higher than  $\sim N/2$  the balloon starts to depart significantly from its isopycnic surface or EDS.

## Super pressure balloon response to gravity waves

R. A. Vincent and  
A. Hertzog

Title Page

Abstract

Introduction

Conclusions

References

Tables

Figures

⏪

⏩

◀

▶

Back

Close

Full Screen / Esc

Printer-friendly Version

Interactive Discussion



Following Boccara et al. (2008) a statistical analysis of the simulated response of 12 m diameter SPB to gravity wave packets propagating in the Antarctic stratosphere is used to show that momentum flux is measured with high accuracy for  $\hat{\omega} \lesssim N/2$ , as is the direction of wave propagation. Momentum fluxes can be accurately measured down to values of about  $10^{-4}$  mPa (Fig. 5a). As newer instruments are installed, including more accurate GPS measurements of displacement, reductions in this noise floor are possible. Other wave parameters such as intrinsic phase speed and horizontal and vertical wavelengths are also recovered with good accuracy, although the optimum frequency range is  $N/2 \gtrsim \hat{\omega} \gtrsim 1.5f$  due to factors that complicate the retrieval process when  $\hat{\omega} \sim f$ .

An important outcome is that the retrieval process is independent of the vertical direction of wave propagation propagation. This means that it will be possible to derive the net momentum flux when the analysis is applied to real data, such as that acquired during the 2010 Concordiasi campaign.

*Acknowledgements.* R. A. Vincent gratefully acknowledges support from LMD when visiting A. Hertzog during the course of this research. He also thanks Chris Pietsch for contributions to the numerical solution of SPB motions. A. Hertzog would like to thank Francis Dalaudier for insightful comments on an earlier version of the manuscript, as well as Étienne Vignon who contributed to the derivation of retrieval formulae during his internship at LMD. We acknowledge CNES support for long-duration balloon activities.

## References

- Alexander, M. J.: Interpretations of observed climatological patterns in stratospheric gravity wave variance, *J. Geophys. Res.*, 103, 8627–8640, 1998. 10814
- Alexander, M. J. and Barnet, C.: Using satellite observations to constrain parameterizations of gravity wave effects for global models, *J. Atmos. Sci.*, 64, 1652–1665, 2007. 10814
- Alexander, M. J., Geller, M., McLandress, C., Polavarapu, S., Preusse, P., Sassi, F., Sato, K., Ern, M., Hertzog, A., Kawatani, Y., Pulido, M., Shaw, T., Sigmond, M., Vincent, R., and Watanabe, S.: Recent developments in gravity wave effects in climate models and the global dis-

## Super pressure balloon response to gravity waves

R. A. Vincent and  
A. Hertzog

Title Page

Abstract

Introduction

Conclusions

References

Tables

Figures

◀

▶

◀

▶

Back

Close

Full Screen / Esc

Printer-friendly Version

Interactive Discussion

- tribution of gravity wave momentum flux from observations and models, *Q. J. Roy. Meteor. Soc.*, 136, 1103–1124, 2010. 10799, 10814
- Beres, J. H.: Gravity wave generation by a three-dimensional thermal forcing, *J. Atmos. Sci.*, 61, 1805–1815, 2004. 10800
- 5 Boccara, G., Hertzog, A., Vincent, R. A., and Vial, F.: Estimation of gravity-wave momentum fluxes and phase speeds from quasi-Lagrangian stratospheric balloon flights, 1: Theory and simulations, *J. Atmos. Sci.*, 65, 3042–3055, 2008. 10799, 10807, 10808, 10809, 10810, 10811, 10812, 10813, 10816, 10819
- Fritts, D. C. and Alexander, M. J.: Gravity wave dynamics and effects in the middle atmosphere, *Rev. Geophys.*, 41, 1003, doi:10.1029/2001RG000106, 2003. 10810
- 10 Fritts, D. C. and Alexander, M. J.: Correction to “Gravity wave dynamics and effects in the middle atmosphere”, *Rev. Geophys.*, 50, RG3004, doi:10.1029/2012RG000409, 2012. 10810, 10812
- Hertzog, A., Cocquerez, P., Basdevant, C., Boccara, G., Bordereau, J., Brioit, B., Cardonne, A., Guilbo, R., Ravissot, A., Schmitt, E., Valdivia, J.-N., Venel, S., and Vial, F.: Stratéole/Vorcore – long-duration superpressure balloons to study the Antarctic lower stratosphere during the 2005 winter, *J. Atmos. Ocean. Tech.*, 24, 2048–2061, 2007. 10799
- 15 Hertzog, A., Boccara, G., Vincent, R. A., Vial, F., and Cocquerez, P.: Estimation of gravity-wave momentum fluxes and phase speeds from quasi-lagrangian stratospheric balloon flights. 2: Results from the Vorcore campaign in Antarctica, *J. Atmos. Sci.*, 65, 3056–3070, 2008. 10799, 10808
- Hines, C. O.: Internal atmospheric gravity waves at ionospheric heights, *Can. J. Phys.*, 38, 1441–1481, 1960. 10802
- Lane, T. P. and Moncrieff, M. W.: Stratospheric gravity waves generated by multiscale tropical convection, *J. Atmos. Sci.*, 65, 2598–2614, 2008. 10800
- 25 Massman, W. J.: On the nature of vertical oscillations of constant volume balloons, *J. Appl. Meteorol.*, 17, 1351–1356, 1978. 10799
- Massman, W. J.: An investigation of gravity waves on a global scale using TWERLE data, *J. Geophys. Res.*, 86, 4072–4082, 1981. 10799
- 30 Nastrom, G. D.: The response of superpressure balloons to gravity waves, *J. Appl. Meteorol.*, 19, 1013–1019, 1980. 10799, 10800, 10801, 10818



## Super pressure balloon response to gravity waves

R. A. Vincent and  
A. Hertzog

Title Page

Abstract

Introduction

Conclusions

References

Tables

Figures

⏪

⏩

◀

▶

Back

Close

Full Screen / Esc

Printer-friendly Version

Interactive Discussion



Piani, C., Durran, D., Alexander, M. J., and Holton, J. R.: A numerical study of three-dimensional gravity waves triggered by deep tropical convection and their role in the dynamics of the QBO, *J. Atmos. Sci.*, 57, 3689–3702, 2000. 10800

Rabier, F., Bouchard, A., Brun, E., Doerenbecher, A., Guedj, S., Guidard, V., Karbou, F., Peuch, V.-H., El Amraoui, L., Puech, D., Genthon, C., Picard, G., Town, M., Hertzog, A., Vial, F., Cocquerez, P., Cohn, S. A., Hock, T., Fox, J., Cole, H., Parsons, D., Powers, J., Romberg, K., VanAndel, J., Deshler, T., Mercer, J., Haase, J. S., Avallone, L., Kalnajs, L., Mechoso, C. R., Tangborn, A., Pellegrini, A., Frenot, Y., Thepaut, J.-N., McNally, A., Balsamo, G., and Steinle, P.: The CONCORDIASI project in Antarctica, *B. Am. Meteorol. Soc.*, 91, 69–86, 2010. 10799

The TWERLE Team: The TWERL Experiment, *B. Am. Meteorol. Soc.*, 58, 930–948, 1977. 10798

Torrence, C. and Compo, G. P.: A practical guide to wavelet analysis, *B. Am. Meteorol. Soc.*, 79, 61–78, 1998. 10812

Vincent, R. A., Hertzog, A., Boccara, G., and Vial, F.: Balloon-borne measurements of gravity-wave momentum fluxes in the polar stratosphere, *Geophys. Res. Lett.*, 34, L19804, doi:10.1029/2007GL031072, 2007. 10799

Walterscheid, R. L., Galinas, L. J., Mechoso, C. R., and Schubert, G.: Evaluation of momentum and sensible heat fluxes in constant density coordinates: application to super-pressure balloon data during the VORCORE campaign, *J. Geophys. Res.*, 117, D09105, doi:10.1029/2011jd016731, 2012. 10799

## Super pressure balloon response to gravity waves

R. A. Vincent and  
A. Hertzog

**Table 1.** Definition of terms used in the text.

Symbol	Definition
$M_B$	Mass of balloon system
$M_a$	Mass of the air displaced by the balloon system
$\eta$	Added mass coefficient (1/2 for a sphere in a perfect fluid)
$\zeta'_b$	Vertical displacement the balloon from its EDS
$\rho_a$	Density of ambient atmosphere
$C_d$	Drag coefficient
$A_B$	Cross-sectional area of balloon
$w'$	Vertical wind velocity.

Title Page

Abstract

Introduction

Conclusions

References

Tables

Figures

⏪

⏩

◀

▶

Back

Close

Full Screen / Esc

Printer-friendly Version

Interactive Discussion



## Super pressure balloon response to gravity waves

R. A. Vincent and  
A. Hertzog

**Table 2.** Atmospheric and balloon parameters in the Antarctic lower stratosphere.

Parameter	Value
$\bar{T}$	200 K
$d\bar{T}/dz$	$-1.60 \times 10^{-3} \text{ K m}^{-1}$
$N^2$	$4 \times 10^{-4} \text{ s}^{-2}$
$\omega_B^2$	$9.7 \times 10^{-4} \text{ s}^{-2}$
$\bar{\rho}$	$0.105 \text{ kg m}^{-3}$
$\bar{p}$	6000 Pa
$C_d$	0.5
$r$	6.0 m
$A$	$0.0208 \text{ m}^{-1}$

[Title Page](#)
[Abstract](#)
[Introduction](#)
[Conclusions](#)
[References](#)
[Tables](#)
[Figures](#)
[◀](#)
[▶](#)
[◀](#)
[▶](#)
[Back](#)
[Close](#)
[Full Screen / Esc](#)
[Printer-friendly Version](#)
[Interactive Discussion](#)

## Super pressure balloon response to gravity waves

R. A. Vincent and  
A. Hertzog

**Table 3.** SPB measurement uncertainties.

Parameter	Symbol	Uncertainty
Zonal displacement	$\sigma_x$	0.75 m
Meridional displacement	$\sigma_y$	0.75 m
Vertical displacement	$\sigma_z$	1.5 m
Zonal velocity	$\sigma_u$	$0.025 \text{ m s}^{-1}$
Meridional velocity	$\sigma_v$	$0.025 \text{ m s}^{-1}$
Pressure	$\sigma_p$	0.1 Pa
Temperature	$\sigma_T$	0.3 K

Title Page

Abstract

Introduction

Conclusions

References

Tables

Figures

◀

▶

◀

▶

Back

Close

Full Screen / Esc

Printer-friendly Version

Interactive Discussion

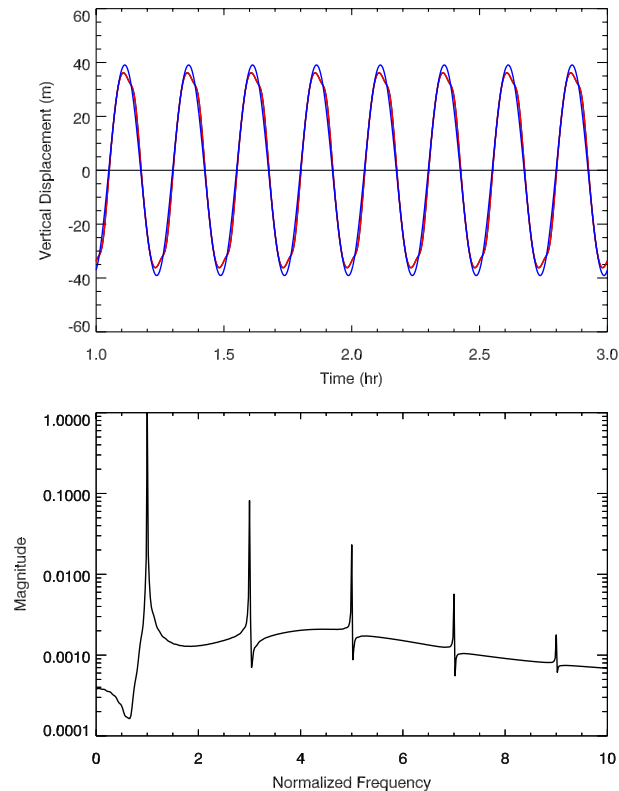
## Super pressure balloon response to gravity waves

R. A. Vincent and  
A. Hertzog

**Table 4.** Mean values of simulated parameters and their standard deviations. Here,  $\Delta\hat{c}$ ,  $\Delta\theta$ ,  $\Delta(\rho_0 u' w')$  and  $\Delta c_g$  are the differences between the respective simulated and input values. The other quantities are the ratios of the simulated to input values. The  $\hat{\tau}$  ratio denotes the ratio of the retrieved intrinsic wave period to the input value and the  $\tau_g$  ratio is the ratio of the retrieved to input ground-based period. Figures in brackets are median values. The statistics are provided for the full GW frequency range ( $N > \hat{\omega} > 1.5f$ ), unless otherwise stated, and both up and down going waves are included in the averages.

Parameter	Without Noise		With Noise	
	Mean	Std. Dev.	Mean	Std. Dev.
$\Delta\hat{c}$ ( $\text{ms}^{-1}$ )	−3.6	11.1	−3.7	12.2
$\Delta\hat{c}$ ( $\text{ms}^{-1}$ ) ( $N/2 > \hat{\omega} > 1.5f$ )	−0.22	0.35	0.01	2.1
$\Delta\theta$ (deg)	−0.73	13.8	−2.8	22.4
$\Delta\theta$ (deg) ( $N/2 > \hat{\omega} > 1.5f$ )	0.00	0.2	−0.82	12.1
$\Delta(\rho_0 u'_{\parallel} w')$ (mPa)	$6 \times 10^{-4}$	$5 \times 10^{-3}$	$2 \times 10^{-4}$	$7 \times 10^{-3}$
$\Delta(\rho_0 u'_{\parallel} w')$ (mPa) ( $N/2 > \hat{\omega} > 1.5f$ )	$-5 \times 10^{-5}$	$1 \times 10^{-3}$	$-1 \times 10^{-4}$	$4 \times 10^{-3}$
$\Delta c_g$ ( $\text{ms}^{-1}$ )	−3.8	11.3	−4.0	12.2
$\Delta c_g$ ( $\text{ms}^{-1}$ ) ( $N/2 > \hat{\omega} > 1.5f$ )	−0.43	1.5	−0.12	2.5
$\lambda_h$ ratio	2.2	40	1.1	3.6
$\lambda_h$ ratio ( $N/2 > \hat{\omega} > 1.5f$ )	0.97	0.11	1.1	2.0
$\lambda_z$ ratio	2.8	45	3.3	96
$\lambda_z$ ratio ( $N/2 > \hat{\omega} > 1.5f$ )	1.05	0.12	1.07	12.3
$\hat{\tau}$ ratio	0.93 (0.93)	0.04	0.93 (0.93)	0.09
$\tau_g$ ratio	1.48 (0.93)	15	1.44 (0.93)	10
% of momentum flux in right direction	98		97	

[Title Page](#)
[Abstract](#)
[Introduction](#)
[Conclusions](#)
[References](#)
[Tables](#)
[Figures](#)
[⏪](#)
[⏩](#)
[◀](#)
[▶](#)
[Back](#)
[Close](#)
[Full Screen / Esc](#)
[Printer-friendly Version](#)
[Interactive Discussion](#)


**Super pressure  
balloon response to  
gravity waves**R. A. Vincent and  
A. Hertzog

**Fig. 1.** (Top) Vertical displacements of a 12 m diameter superpressure balloon induced by a gravity wave with period 15 min and vertical wind amplitude of  $1 \text{ ms}^{-1}$ . Results are plotted for the interval 1 to 3 h after the simulation was turned on to avoid transient effects near  $t = 0$ . The red curve shows the numerical simulation while the blue curve shows results from the analytic method. (Bottom) Normalized power spectrum of the numerically simulated SPB vertical displacements shown in top panel.

Title Page

Abstract

Introduction

Conclusions

References

Tables

Figures

◀

▶

◀

▶

Back

Close

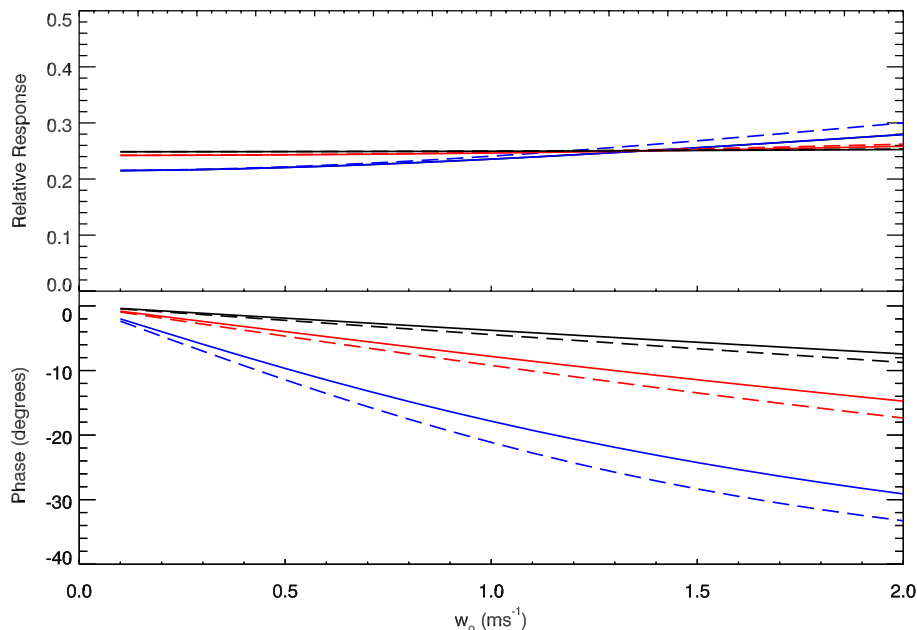
Full Screen / Esc

Printer-friendly Version

Interactive Discussion

## Super pressure balloon response to gravity waves

R. A. Vincent and  
A. Hertzog

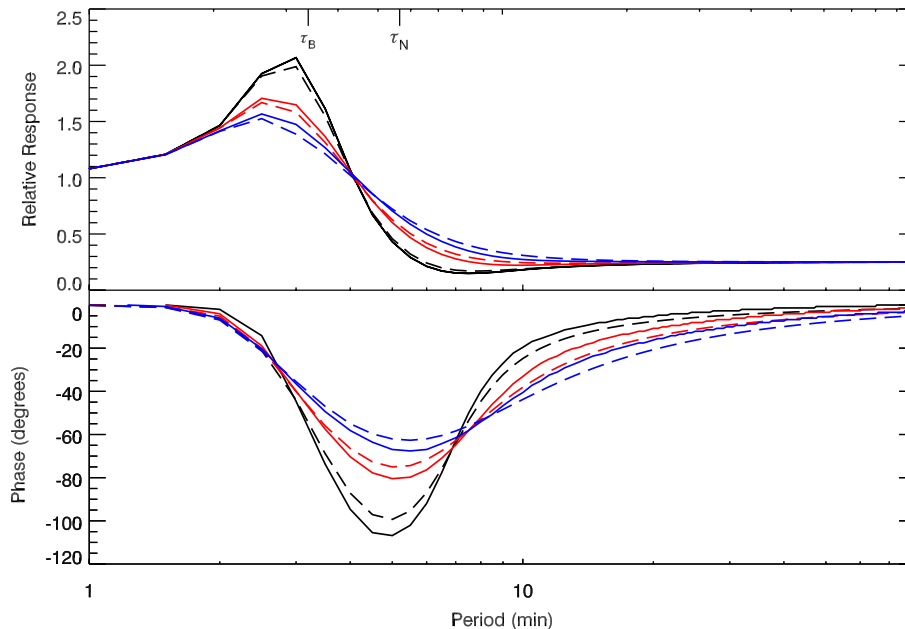


**Fig. 2.** Comparison of the analytical solution (dashed) with the numerical solution (solid) for the response of a 12 m diameter SPB to gravity waves with different values of vertical velocity amplitude and periods of 15 min (blue), 30 min (red) and 60 min (black). The top panel shows the balloon displacement normalized to wave displacement ( $\zeta'_o/\zeta_o$ ) and the bottom panel the relative phase,  $\phi$ .

[Title Page](#)
[Abstract](#)
[Introduction](#)
[Conclusions](#)
[References](#)
[Tables](#)
[Figures](#)
[⏪](#)
[⏩](#)
[◀](#)
[▶](#)
[Back](#)
[Close](#)
[Full Screen / Esc](#)
[Printer-friendly Version](#)
[Interactive Discussion](#)


## Super pressure balloon response to gravity waves

R. A. Vincent and  
A. Hertzog



**Fig. 3.** As for Fig. 2, but for the SPB response as a function of wave period for waves with vertical velocity amplitudes of  $w_0$  equal to 0.5 (black), 1.0 (red) and  $1.5 \text{ ms}^{-1}$  (blue). The symbols  $\tau_B$  and  $\tau_N$  indicate the buoyancy and Brunt periods, respectively.

[Title Page](#)
[Abstract](#)
[Introduction](#)
[Conclusions](#)
[References](#)
[Tables](#)
[Figures](#)
[◀](#)
[▶](#)
[◀](#)
[▶](#)
[Back](#)
[Close](#)
[Full Screen / Esc](#)
[Printer-friendly Version](#)
[Interactive Discussion](#)



**Super pressure  
balloon response to  
gravity waves**R. A. Vincent and  
A. Hertzog

Title Page

Abstract

Introduction

Conclusions

References

Tables

Figures

◀

▶

◀

▶

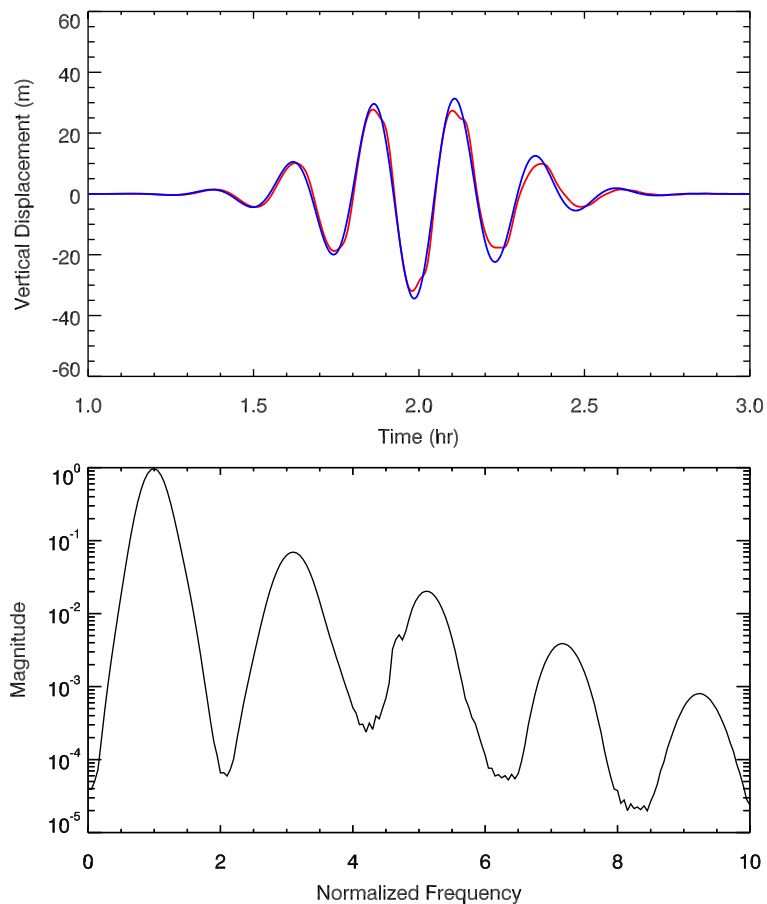
Back

Close

Full Screen / Esc

Printer-friendly Version

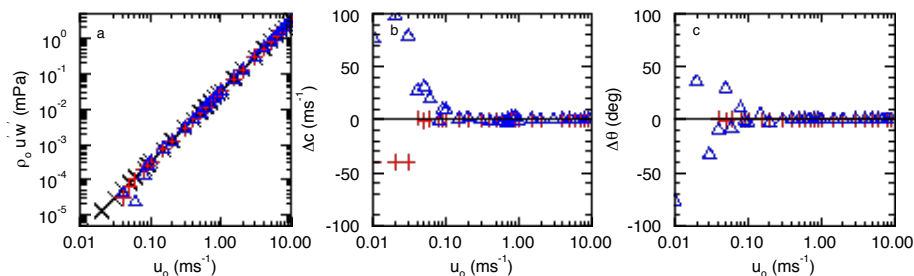
Interactive Discussion



**Fig. 4.** As for Fig. 1, but for the SPB response to a gravity wave packet defined by Eq. (12).

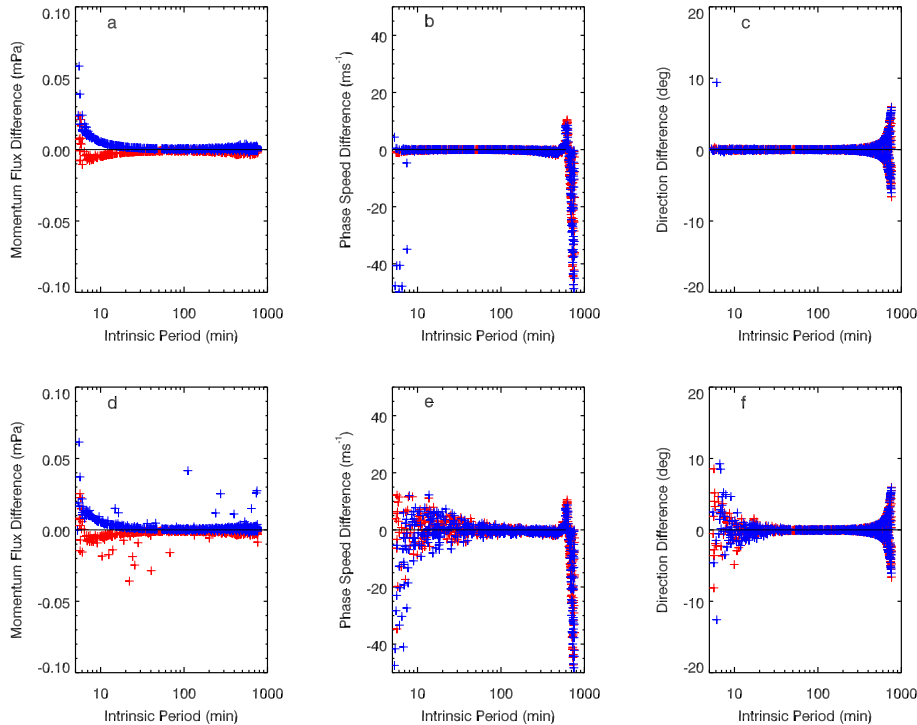
## Super pressure balloon response to gravity waves

R. A. Vincent and  
A. Hertzog



**Fig. 5.** **(a)** Values of momentum flux in mPa plotted as a function of wave packet amplitude,  $u_0$ . The  $\times$  symbols represent the input values, the red + indicate the retrieved values without instrumental noise and the blue triangles show the retrieved values with noise. **(b)** As for **(a)**, but for  $\Delta c = \hat{c}_{\text{sim}} - \hat{c}_{\text{in}}$ . **(c)** As for **(a)**, but for  $\Delta\theta = \theta_{\text{sim}} - \theta_{\text{in}}$ .

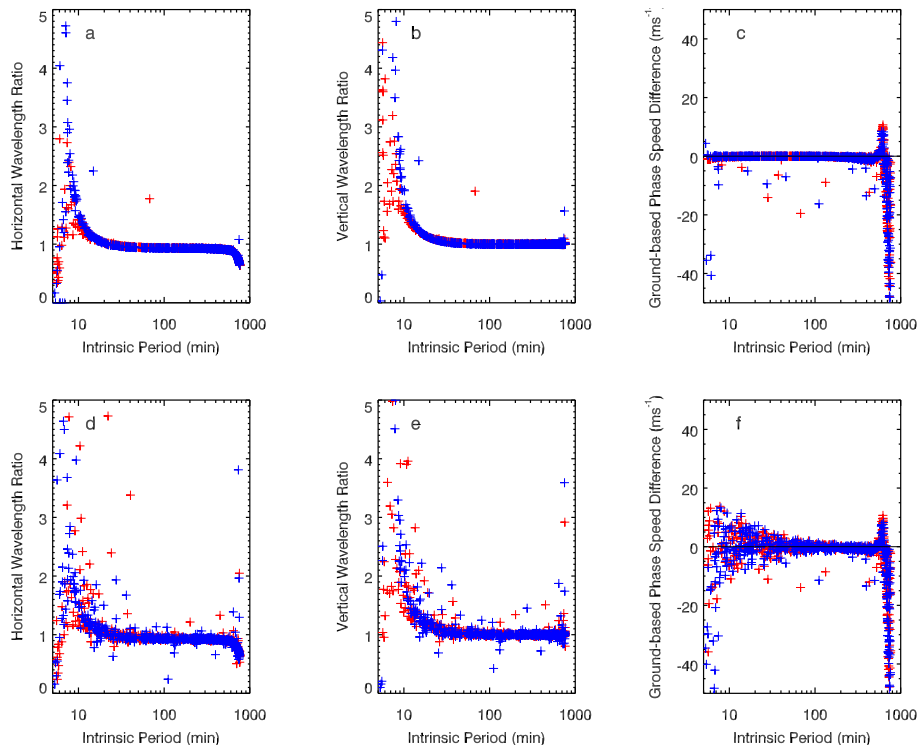
[Title Page](#)
[Abstract](#)
[Introduction](#)
[Conclusions](#)
[References](#)
[Tables](#)
[Figures](#)
[◀](#)
[▶](#)
[◀](#)
[▶](#)
[Back](#)
[Close](#)
[Full Screen / Esc](#)
[Printer-friendly Version](#)
[Interactive Discussion](#)



**Fig. 6.** Difference between computed and input values of momentum flux ( $\rho_0 u' w'_{\text{sim}} - \rho_0 u' w'_{\text{in}}$ ) as a function of intrinsic period for **(a)** without instrumental noise and **(d)** with noise. Panels **(b)** and **(e)** are as for **(a)** and **(d)** but for the difference between the computed and input intrinsic phase speeds ( $\Delta c = \hat{c}_{\text{sim}} - \hat{c}_{\text{in}}$ ). Panels **(c)** and **(f)** are as for **(a)** and **(d)**, but for the difference between computed and input values of direction of propagation ( $\Delta \theta = \theta_{\text{sim}} - \theta_{\text{in}}$ ). In all panels, red (blue) values correspond to waves propagating energy upward (downward).

## Super pressure balloon response to gravity waves

R. A. Vincent and  
A. Hertzog



**Fig. 7.** As for Fig. 6, but for (a) and (d) the ratio of simulated to input horizontal wavelength ( $(\lambda_h)_{sim}/(\lambda_h)_{in}$ ). (b) and (e) for vertical wavelength ratio ( $(\lambda_z)_{sim}/(\lambda_z)_{in}$ ). (c) and (f) difference between simulated and input ground-based horizontal phase speed ( $cg_{sim} - cg_{in}$ ).