



**Six years of TES  
tropospheric ozone  
retrievals validated**

W. W. Verstraeten et al.

This discussion paper is/has been under review for the journal Atmospheric Measurement Techniques (AMT). Please refer to the corresponding final paper in AMT if available.

# Validation of six years of TES tropospheric ozone retrievals with ozonesonde measurements: implications for spatial patterns and temporal stability in the TES bias

W. W. Verstraeten<sup>1,2</sup>, K. F. Boersma<sup>1,2</sup>, J. Zörner<sup>2,\*</sup>, M. A. F. Allaart<sup>1</sup>,  
K. W. Bowman<sup>3</sup>, and J. R. Worden<sup>3</sup>

<sup>1</sup>Royal Netherlands Meteorological Institute, Climate Observations, De Bilt, The Netherlands

<sup>2</sup>Eindhoven University of Technology, Fluid Dynamics, Eindhoven, The Netherlands

<sup>3</sup>Jet Propulsion Laboratory (CalTech), Pasadena, California, USA

\* now at: Max-Planck-Institute for Chemistry, Mainz, Germany

Received: 21 December 2012 – Accepted: 28 January 2013 – Published: 4 February 2013

Correspondence to: W. W. Verstraeten (w.w.verstraeten@tue.nl)

Published by Copernicus Publications on behalf of the European Geosciences Union.

Title Page

Abstract

Introduction

Conclusions

References

Tables

Figures

◀

▶

◀

▶

Back

Close

Full Screen / Esc

Printer-friendly Version

Interactive Discussion



## Abstract

In this analysis, Tropospheric Emission Spectrometer (TES) V004 nadir ozone profiles are validated with more than 4400 coinciding ozonesonde measurements taken across the world from the World Ozone and Ultraviolet Radiation Data Centre (WOUDC) during the period 2005–2010. The TES observation operator was applied to the sonde data to ensure a consistent comparison between TES and ozonesonde data, i.e. without the influence of the a priori  $O_3$  profile needed to regulate the retrieval. Generally, TES V004 ozone retrievals are biased high by 2–7 ppbv in the troposphere, consistent with validation results from earlier studies. Because of two degrees of freedom for signal in the troposphere, we can distinguish between upper and lower troposphere mean biases, respectively ranging from  $-0.4$  to  $+13.3$  ppbv for the upper troposphere and  $+3.9$  to  $+6.0$  ppbv for the lower troposphere. Focusing on the 464 hPa retrieval level, broadly representative for free tropospheric ozone, we find differences in the TES biases for the Tropics ( $+3$  ppbv), sub-tropics ( $+5$  ppbv), and northern ( $+7$  ppbv) and southern mid-latitudes ( $+4$  ppbv). The relatively long-term record (6 yr) of TES-ozonesonde comparisons, allowed us to quantify temporal variations in TES biases in free tropospheric ozone, at 464 hPa. We find that there are no discernable biases in each of these latitudinal bands; temporal variations in the bias are typically within the uncertainty of the difference between TES and ozone-sondes. Establishing these bias patterns is important in order to make meaningful use of TES  $O_3$  data in applications such as model evaluation, trend analysis, or data assimilation.

## 1 Introduction

Satellite measurements provide a relatively new perspective on global tropospheric ozone ( $O_3$ ) distributions and their changes in time. The Tropospheric Emission Spectrometer (TES) on board the EOS-Aura satellite provides retrievals of three-dimensional global distributions of tropospheric ozone since the second half of 2004

AMTD

6, 1239–1267, 2013

### Six years of TES tropospheric ozone retrievals validated

W. W. Verstraeten et al.

Title Page

Abstract

Introduction

Conclusions

References

Tables

Figures



Back

Close

Full Screen / Esc

Printer-friendly Version

Interactive Discussion



**Six years of TES  
tropospheric ozone  
retrievals validated**

W. W. Verstraeten et al.

Title Page

Abstract

Introduction

Conclusions

References

Tables

Figures

◀

▶

◀

▶

Back

Close

Full Screen / Esc

Printer-friendly Version

Interactive Discussion



(Beer et al., 2006; Beer, 2001). TES measures upwelling radiances in the infrared part of the spectrum and uses the absorption by ozone around  $9.6\ \mu\text{m}$  to infer the vertical distribution of ozone with 4–6 degrees of freedom for signal (DOFs), including 1–2 in the troposphere as compared to 0.5 to 1 DOFS for UV/VIS sensors (e.g. Liu et al., 2010; Zhang et al., 2010). Despite its limited coverage (global in a month) compared to its European counterpart IASI (global coverage in 1–2 days) (Clerbaux et al., 2009) that is available since 2007, the 6-yr record makes TES in principle a suitable sensor to investigate multi-annual changes in tropospheric ozone from space.

Here we validate the TES  $\text{O}_3$  data for their observational performance and fitness for model evaluation and to investigate whether their quality has improved after retrieval updates from version 2 to version 4/5 using a relatively long-term dataset. Another aim of our study is to revisit the assertion by Nassar et al. (2008) that biases in TES do not appear to depend on location or season. Such statements about the quality are important in view of the need for optimal bias corrections when using the TES  $\text{O}_3$  data in model evaluation studies. Another important quality indicator of the TES  $\text{O}_3$  data is whether any biases are constant in time or reflect some degree of instrument degradation. This is especially important for those users interested in using the TES  $\text{O}_3$  data for trend analyses.

Initial validation of TES  $\text{O}_3$  data was carried out by Worden et al. (2007), who compared a limited number of early-mission retrievals to ozonesonde measurements (taken between September–November 2004), using the first version of TES nadir  $\text{O}_3$  data (V001). A more elaborated validation analysis of version 2 (V002) data was conducted by Nassar et al. (2008) who examined approximately 1600 TES and ozonesonde coincidences from October 2004 to October 2006. Apart from comparisons with ozonesondes, Richards et al. (2008) used aircraft observations during the Intercontinental Chemical Transport Experiment-B (INTEX-B) to validate TES tropospheric ozone profiles and Osterman et al. (2008) evaluated TES measurements with OMI derived total, stratospheric, and tropospheric ozone columns. The results of these validation studies all pointed to TES tropospheric  $\text{O}_3$  concentrations overestimating the reference data, with

**Six years of TES  
tropospheric ozone  
retrievals validated**

W. W. Verstraeten et al.

Title Page

Abstract

Introduction

Conclusions

References

Tables

Figures

◀

▶

◀

▶

Back

Close

Full Screen / Esc

Printer-friendly Version

Interactive Discussion



an average high bias of 3–11 ppbv. Boxe et al. (2010) performed a study in which the Aura TES instrument took several measurements corresponding to ozonesonde launches timed to match the Aura overpass. Their study confirmed the previously quantified bias between TES and ozonesonde, and also showed that the calculated random error of the TES ozone estimates are consistent with the actual error (RMS difference between TES ozone estimate and sonde).

Our purpose is to extend the TES versus ozonesonde comparison exercise from Worden et al. (2007) and Nassar et al. (2008) by using version 4 (V004) data ranging from 2005 to 2010 and by using ozonesondes extracted from the Woudc database (<http://www.woudc.org/>). A proper comparison between TES and ozonesondes requires that the vertical resolution and sensitivity of TES are taken into account by applying the TES observation operator to the sonde data (the TES-averaging kernel and a priori constraint). This operation ensures a vertical profile for the sonde data that represents what TES would estimate if the sonde profile can be considered representative for the true atmospheric state (Rodgers and Connor, 2003). Differences between TES ozone profiles and ozonesonde profiles with the TES operator are compared for different latitudinal zones and TES – sonde ozone biases are estimated. We also evaluate the temporal stability of the ozone biases by testing the null hypothesis of the slope of a fitted linear regression to the compiled time series of the TES-sonde bias for the period 2005–2010.

## 2 Tropospheric ozone retrieval from TES

TES is an infrared Fourier-transform spectrometer (Beer et al., 2001; Beer, 2006) onboard the NASA Earth Observing System Aura (EOS-Aura) platform operating from the second half of 2004. The Aura satellite is in a near-polar, sun-synchronous orbit with equator crossing times of 13:40 local mean solar time for the ascending part of the orbit. TES is predominantly nadir viewing and measures radiance spectra of the Earth-atmosphere at frequencies between 650 and 2250  $\text{cm}^{-1}$  (3.3–15.4  $\mu\text{m}$ ) with

## Six years of TES tropospheric ozone retrievals validated

W. W. Verstraeten et al.

Title Page

Abstract

Introduction

Conclusions

References

Tables

Figures

◀

▶

◀

▶

Back

Close

Full Screen / Esc

Printer-friendly Version

Interactive Discussion



a spectral resolution of  $0.1 \text{ cm}^{-1}$ . Along with ozone profiles, atmospheric temperature, and concentrations of water vapour, also other atmospheric and surface variables are derived from TES radiance spectra. The nadir vertical profiles are spaced  $1.6^\circ$  apart along the orbit track and have a footprint of approximately  $5 \times 8 \text{ km}^2$  (Beer et al., 2001; Beer, 2006). TES retrievals (described in detail by Bowman et al., 2006; Clough et al., 2006; Kulawik et al., 2006a) are based on iteratively fitting of radiative transfer forward model simulations – which relates the atmospheric state to radiance values using atmospheric temperature and constituent profiles as well as the surface properties – to observed radiances at the TES sensor. The measured at-sensor radiance values contain information on upwelling radiation, attenuated surface emission and reflected downwelling radiation. In order to retrieve the concentration of species like ozone in the atmospheric profile, a cost function is solved, such that differences between simulated and observed radiances, and between the retrieved and initial guess (a priori) state vectors are minimized. The state vector, containing surface pressure, gridded temperature, constituents mixing ratios (including  $\text{O}_3$ ), nadir viewing angle, instrument line shape and others, specifies the elements of the state of the atmosphere being measured and of the instrument characteristics. Non-linear spectral fitting of retrieval parameters is applied based upon a Levenberg-Marquardt minimization algorithm described in Bowman et al. (2006).

The a priori  $\text{O}_3$  profile information is taken from monthly mean simulations from the MOZART model (Brosseur et al., 1998) and averaged over  $10^\circ \times 60^\circ$  grids (latitude by longitude). Thus, TES retrievals contain a mixture of observed information where TES sensitivity is high, and assumed a priori information where TES sensitivity is low. Using the concept of averaging kernel (AK) the vertical sensitivity of TES retrieved ozone can be evaluated. The averaging kernel defines the relative contribution of each element of the true state to the retrieved estimate at a particular pressure level (Rodgers, 2000). The trace of the averaging kernel matrix defines the number of degrees of freedom (DOF) for signal. The DOFs are not constant for all TES retrievals but depend on the temperature contrast between surface and atmosphere, the retrieved state (Bowman

**Six years of TES  
tropospheric ozone  
retrievals validated**

W. W. Verstraeten et al.

Title Page

Abstract

Introduction

Conclusions

References

Tables

Figures

◀

▶

◀

▶

Back

Close

Full Screen / Esc

Printer-friendly Version

Interactive Discussion



et al., 2006), and cloud optical depth (Kulawik et al., 2006b; Eldering et al., 2008). In general, the TES vertical resolution for ozone profiles is 6–7 km, corresponding to ~1–2 degrees of freedom in the troposphere with the highest number of DOF for the clear-sky tropics and subtropics where TES can distinguish between lower and upper tropospheric ozone (Jourdain et al., 2007). A more formal description of the averaging kernel is given in Sect. 4. Worden et al. (2007) showed that TES errors are dominated by the TES radiance noise and the interference from other species in the retrieval, with error budgets of up to 15–20 %.

Figure 1 shows the seasonal mean (June–July–August, hereafter JJA) global distribution of tropospheric ozone (at 464 hPa) averaged for the period 2005–2010 as retrieved by TES when using a global and annual mean (MOZART) a priori O<sub>3</sub> profile. Using a universal a priori O<sub>3</sub> profile, instead of the MOZART a priori that changes incrementally every 60° longitude and 10° latitude, removes the structure to the retrieval that is not actually measured. Reprocessing the TES profiles using a universal a priori is based on the method described in Zhang et al. (2006) by adding to the original ozone retrievals the difference of both (MOZART 10° × 60° and MOZART global mean) a priori profiles multiplied by the difference of the unity and averaging kernel matrix. In Fig. 1, we see relatively low ozone values over the tropical oceans, where ozone is generally destroyed through photolysis and subsequent reactions with water vapour (e.g. Crutzen, 1979). In contrast, ozone concentrations are high over and downwind of polluted regions with strong precursor emissions, i.e. NO<sub>x</sub>, volatile organic compounds (VOCs), ample sunlight, and favourable dynamical conditions such as the Mediterranean, the Middle East, eastern China, and central Africa (e.g. Liu et al., 2009; Worden et al., 2009).

### 3 Ozone data from WOUDC

Vertical profiles of ozone concentrations are routinely measured in situ from balloon sondes launched from stations around the world, typically between 10:00–12:00 UTC,

but also at other times ( $\sim 05:30$ ,  $\sim 24:00$  UTC, etc.). The sondes provide measurements of ozone, temperature, pressure, and humidity up to 35 km altitude with a vertical resolution of approximately 150 m. Here we take all ozone profiles measured from 2005 to 2010 that have been reported to the World Ozone and Ultraviolet Radiation Data Centre (WOUDC, <http://www.woudc.org>). WOUDC contains the largest amount of data on ozone and surface ultraviolet radiation measured by instruments mounted on ground-based, shipborne or airborne platforms. The majority of sonde measurements originate from Europe and North America, but sondes are also launched from a few stations in South America, Asia and Africa.

WOUDC ozone profiles have been measured with the electrochemical concentration cell (ECC) (Komhyr, 1969) and Brewer Mast (BM) sondes. Recent comparisons between tropospheric  $O_3$  measured by ECC and BM sondes confirmed the level of agreement to within 5% and indicated that the observed differences between the sonde types are not significant at a 90% confidence level (Stübi et al., 2008). Logan et al. (2012) reported mean biases of  $0.9 \pm 2.8$  ppbv (one sigma) in the lower troposphere (681–580 hPa) between sonde data and MOZAIC time series at Frankfurt and Munich (1999–2008). In the higher troposphere (501–430 hPa) the biases are larger ( $1.7 \pm 3.8$  ppb) for the same time period (Logan et al., 2012). Generally, WOUDC ozone data are sufficiently accurate and, irrespective of the sensor type, can be used to validate the TES ozone retrievals.

## 4 TES averaging kernel, coincidence criteria and TES data screening

### 4.1 Application of the TES averaging kernel

The TES estimate of the ozone profile,  $\widehat{x}_{\text{TES}}$ , is written as (Bowman et al., 2002):

$$\widehat{x}_{\text{TES}} = x_a + \mathbf{A}[x_{\text{true}} - x_a] + \varepsilon \quad (1)$$

## Six years of TES tropospheric ozone retrievals validated

W. W. Verstraeten et al.

Title Page

Abstract

Introduction

Conclusions

References

Tables

Figures

◀

▶

◀

▶

Back

Close

Full Screen / Esc

Printer-friendly Version

Interactive Discussion



## Six years of TES tropospheric ozone retrievals validated

W. W. Verstraeten et al.

Title Page

Abstract

Introduction

Conclusions

References

Tables

Figures

◀

▶

◀

▶

Back

Close

Full Screen / Esc

Printer-friendly Version

Interactive Discussion



with  $x_a$  the a priori ozone profile (as predicted by the MOZART CTM),  $\mathbf{A}$  the averaging kernel that provides the sensitivity of the retrieval to the true ozone profile  $x_{\text{true}}$ , and  $\varepsilon$  an error term representing the propagation of spectral noise and the interference effects from other absorbing species into the retrieved state. The estimate,  $\widehat{x}_{\text{TES}}$ , as well as the true state and prior are in units of log (VMR).

Since the original sonde data are provided on various irregular pressure grids, all sonde data are interpolated to a fine level pressure grid (800 levels from 1260 hPa to 0.46 hPa). Subsequently a mapping matrix is used to interpolate the sonde data to the 67-level pressure grid (from 1212 to 0.1 hPa) used in the TES retrievals. The profile  $x_{\text{sonde}}$  measured by the ozonesonde, interpolated vertically to the TES vertical pressure grid is then:

$$x_{\text{sonde}} = x_{\text{true}} + \delta \quad (2)$$

with  $\delta$  describing the sonde errors which are assumed to be uncorrelated, i.e. diagonal only covariance (Worden et al., 2007). We then apply the TES averaging kernel to represent the ozone profile estimate that TES would retrieve if the instrument would observe the same air mass as probed by the sonde.

$$\widehat{x}_{\text{sonde}} = x_a + \mathbf{A}[x_{\text{sonde}} - x_a] \quad (3)$$

The difference between TES and the sonde profile estimates is given by:

$$\widehat{x}_{\text{TES}} - \widehat{x}_{\text{sonde}} = \mathbf{A}[x_{\text{true}} - x_{\text{sonde}}] + \varepsilon \quad (4)$$

and this comparison is now independent of assumptions on the a priori profiles, making it a useful metric to identify other biases in the TES ozone profiles. Since the errors from the sonde profiles are much smaller ( $\delta$  is  $\pm 5\%$ ) than the TES retrieval errors, we can safely assume that the TES sonde difference (Eq. 4) is primarily an indicator of errors in the TES retrieval, as long as TES and sonde sampled very similar atmospheric air masses.



## Six years of TES tropospheric ozone retrievals validated

W. W. Verstraeten et al.

Title Page

Abstract

Introduction

Conclusions

References

Tables

Figures

◀

▶

◀

▶

Back

Close

Full Screen / Esc

Printer-friendly Version

Interactive Discussion



Figure 2 illustrates a typical vertical profile of the TES averaging kernel showing how the ozone retrieved at one specific pressure level is influenced by the total ozone profile over De Bilt, the Netherlands on 14 July 2005 (11:23 UTC) for a clear day with a DOF of 3.98. This AK indicates that the sensitivity in the troposphere peaked well below 464 hPa (at approximately 600 hPa). The right panel of Fig. 2 shows the corresponding ozone profile retrieved by TES, the a priori ozone profile used in the TES retrieval, the ozone profile measured by the sonde launched from De Bilt on 14 July 2005, and the sonde estimate as TES would have observed it in the absence of any spatial or temporal sampling differences. We see that the ozone profiles from TES and from the sonde smoothed with the TES AK correspond closely, and deviate substantially from the a priori. The vertical detail in the original sonde profile is obviously smoothed by the AK. Only at the very lowest atmospheric layers (1000–800 hPa), TES reverts back to its a priori values, reflecting the low sensitivity to O<sub>3</sub> near the surface, but at 464 hPa TES retrievals are still sensitive to free tropospheric ozone.

### 4.2 TES – sonde coincidence criteria and TES data screening

Conducting a proper evaluation of TES measurements with ozonesonde data as reference, requires data pairs from both the satellite and sonde that return information from very similar air parcels. We follow the temporal and spatial coincidence criteria of  $\pm 300$  km and  $\pm 9$  h proposed by Nassar et al. (2008), as these criteria are sufficiently loose to provide a large number of profiles for a statistically meaningful comparison, but sufficiently strict to warrant a high probability that TES and sonde sampled similar air masses. Worden et al. (2007), Osterman (2007), Nassar et al. (2008), Boxe and Worden (2010) all suggested to restrict the temporal and spatial separation of both measurements in order to obtain a sufficient number of data pairs for statistical comparison. Worden et al. (2007), validating V001 TES data, used criterions of 600 km for spatial and  $\pm 48$  h for the temporal separation which resulted in a total of 55 TES-sonde data pairs. Since more TES and sonde data were available for the validation study of V002 TES data, conducted by Nassar et al. (2008), more rigid constraints

**Six years of TES  
tropospheric ozone  
retrievals validated**

W. W. Verstraeten et al.

Title Page

Abstract

Introduction

Conclusions

References

Tables

Figures

◀

▶

◀

▶

Back

Close

Full Screen / Esc

Printer-friendly Version

Interactive Discussion



could be applied by using a maximum range of 300 km and a maximum time difference of  $\pm 9$  h resulting in approximately 1600 coincidences. We also used these criteria for validating V004 TES data with WOUDC sonde ozone data. Figure 3 (left panel) presents a map of ozonesonde stations with their coinciding TES retrievals, showing that most TES-sonde pairs occur in the northern mid-latitudes because this region has the largest number of sonde launches (and stations). Before the coincidence criteria can be applied, the TES data is subject to screening since clouds and suboptimal ozone retrievals degrade the quality of the TES  $O_3$  measurements. Profiles with thick high clouds in the field of view were removed because these obscure the infrared emission from the lower troposphere, greatly reducing TES sensitivity. Profiles with a cloud top pressure less than 750 hPa (cloud top height above  $\pm 2.5$  km) and with an effective (cloud) optical depth larger than 2.0, are considered to be obscured by clouds. Moreover, TES retrievals with a radiance root mean square error (RMS) of more than 1.75 are also excluded from the analysis (Osterman, 2007), reflecting a too large difference between observed and simulated radiances (e.g. a not well-minimized cost function). Applying all these constraints in the TES ozone master quality flag resulted in a total of 4460 “good” coincidences for the full time range of the study from 2005 to 2010.

## 5 Comparison of TES and sonde ozone measurements

Previous versions of TES ozone retrievals have been compared to ozonesondes and aircraft-based measurements over relatively short periods showing that TES  $O_3$  measurements profiles are generally biased high by 3–10 ppb in the troposphere (Worden et al., 2007; Nassar et al., 2008; Osterman et al., 2008; Richards et al., 2008). Here, we focus on validating version 4 (V004) TES  $O_3$  data retrieved for the six-year period from 2005 to 2010. We define the TES bias as the mean difference between collocated TES and ozonesonde data pairs over a certain area of interest. We will return to the validity of this definition later.

## Six years of TES tropospheric ozone retrievals validated

W. W. Verstraeten et al.

Title Page

Abstract

Introduction

Conclusions

References

Tables

Figures

◀

▶

◀

▶

Back

Close

Full Screen / Esc

Printer-friendly Version

Interactive Discussion



Figure 4 presents TES-sonde ozone (profile) differences for a number of latitude zones taking into account all coincidences within the six-year (2005–2010) period, irrespective of season. We follow the comparison approach by Nassar et al. (2008) and show in the left panels the absolute ozone differences (TES-sonde) in the troposphere (1000–300 hPa). The right panels show the relative differences  $((\text{TES} - \text{sonde}) \times 100/\text{sonde})$  for the full ozone profile (1000–1 hPa). Figure 4 shows that TES is generally biased high within the troposphere over all latitude zones by up to 10 ppbv, corresponding to relative differences up to +15%. The TES bias varies as a function of pressure. For the cold Antarctic and Arctic, TES appears to be unbiased with respect to the sondes in the lower troposphere, but this actually reflects the next-to-zero sensitivity of TES to ozone in the lower atmosphere for situations with low brightness temperature. In such cases, the TES retrieval mostly provides the a priori information in the lower troposphere (see Eq. 1 and Fig. 2). The TES bias and standard deviations increase with altitude for the polar and northern mid-latitude regions, probably because of low tropopause levels (suppressing the DOFs for tropospheric ozone), and strong variability in lower stratospheric and upper tropospheric ozone in those regions (because of stratosphere-troposphere exchange). In contrast, over the tropics, where stratospheric ozone has generally little influence on UT ozone concentrations, the bias in the UT is much smaller than in higher latitudes.

In line with the suggestion by Nassar et al. (2008), we now analyse the TES bias for two vertical regimes, the lower troposphere (LT, 1000 to 500 hPa) and the upper troposphere (UT, 500 hPa to tropopause). The 1–2 degrees of freedom for signal in the troposphere should make such an analysis meaningful. From a linear regression of all TES vs. sonde  $\text{O}_3$  data pairs in the lower troposphere, we find generally better agreement between TES and ozonesondes for the Tropics (slope = 1.3,  $r = 0.8$ , bias = + 5 ppbv) than for the mid-latitude regions (slope = 1.5,  $r = 0.7$ , bias = + 7 ppbv) (for more details see Zörner, 2012). This suggests that TES retrievals are more sensitive to lower tropospheric ozone over the Tropics, where the thermal contrast is generally higher, than over mid-latitudes. A similar analysis for TES and sonde  $\text{O}_3$  data

pairs shows much better correlation between the TES and sonde measurements in the upper troposphere ( $r > 0.84$  and slopes  $< 1.25$  for all regions) than for the lower troposphere (Zörner, 2012). This is indicative of the higher TES sensitivity to upper tropospheric ozone (as witnessed also by the averaging kernels in Fig. 2).

Our results confirm those found in previous validation exercises for earlier TES versions with fewer available validation data. Nassar et al. (2008) reported biases in UT O<sub>3</sub> for TES V002 data ranging from +3 to +10 ppbv excluding the Arctic and Antarctic zones where TES sensitivity is low. As discussed earlier, errors in the ozonesonde measurements are very likely smaller than 5 % (Smit et al., 2007). The sonde data are unlikely to systematically underestimate ozone, so that they cannot explain the TES high bias found in this study. This is supported by Richards et al. (2008), who used a completely independent measurement technique, but arrived at similar conclusions that TES tropospheric ozone is biased high by +7 ppbv (over western hemisphere mid-latitudes). The mean TES-ozonesonde differences are not driven by the mismatches in space and time between TES and ozonesonde either, but these are probably important in explaining the standard deviation around the mean differences. We suggest that the mean differences between TES and ozonesondes reported in this study, apart from TES sensitivity, are related to instrumental artifacts, spectroscopy or forward model errors, and consequent retrieval difficulties in TES. This may also explain why the bias has not appreciably decreased between successive versions of TES retrieval algorithms.

The idea that thermal contrast is driving the sensitivity and the quality of the TES retrievals led us to analyse the TES bias as a function of season in the northern mid-latitudes. We find some support for this because of better correlation ( $r = 0.5$ – $0.6$ ) between TES and sonde LT ozone in the warm spring (March–April–May, MAM) and summer (June–July–August, JJA) seasons than in the cold winter (December–January–February, DJF ( $r = 0.3$ )). Although the absolute bias remains +5 ppbv irrespective of season, the relative errors are smaller in the summer (high ozone concentrations at the

## Six years of TES tropospheric ozone retrievals validated

W. W. Verstraeten et al.

Title Page

Abstract

Introduction

Conclusions

References

Tables

Figures

◀

▶

◀

▶

Back

Close

Full Screen / Esc

Printer-friendly Version

Interactive Discussion



northern hemisphere) than in the winter (low concentrations) reflecting higher signal-to-noise ratios in summer.

We now turn our attention to the 464 hPa retrieval level, where TES generally shows good sensitivity to O<sub>3</sub> in the troposphere, with little influence from stratospheric O<sub>3</sub> in all regions and seasons except for the winter at the Northern mid-latitudes. At 464 hPa, the TES sensitivity to free tropospheric O<sub>3</sub> is substantial at all regions. The 464 hPa kernel is sufficiently sharp to limit the influence of lower stratospheric ozone above, but still broad enough to include O<sub>3</sub> contributions from the lower troposphere (Fig. 2). This makes 464 hPa the appropriate level for evaluating the skill of O<sub>3</sub> simulations by chemistry transport models, and for the analysis of trends in free tropospheric ozone. Figure 5 indicates that the TES-sonde bias is clearly smallest +3 (±2) ppbv in the Tropics, and increases with latitude to +7 (±1) ppbv for mid-latitudes, possibly reflecting the generally weaker vertical sensitivity to tropospheric ozone (the lower DOFs) at higher latitudes. The TES mean biases in the Tropics and in the northern mid-latitudes are different to within their standard errors ( $\sigma_{\text{mean}} = \sigma / \sqrt{N}$ ), but it is difficult to make a statistically meaningful distinction between the sub-tropics and mid-latitudes. Nevertheless, the results shown in Fig. 5 indicate that we can construct a TES bias correction that depends on latitude.

Despite the fact that Fig. 5 does not suggest much support for a seasonally dependent bias correction (no clear pattern in the seasonal mean (absolute) bias, and large standard errors for most regions), a strong need exists to correct TES for the observed bias if for instance ozone series from global chemistry transport models are evaluated with TES observations. One way to do this is to subtract the mean bias values for individual latitude zones as indicated in Table 1, and in Figs. 5 and 6 (see next section) from the TES measurements. Worden et al. (2008) applied a similar correction by lowering the TES observations by 15 % to account for the known high bias of TES compared with ozonesondes in their study area (45° N–45° S). Another approach is to use the suggested linear relationship between the O<sub>3</sub> concentrations measured by co-incident sondes and TES retrievals in order to analyse the nature of the bias. There

## Six years of TES tropospheric ozone retrievals validated

W. W. Verstraeten et al.

Title Page

Abstract

Introduction

Conclusions

References

Tables

Figures

◀

▶

◀

▶

Back

Close

Full Screen / Esc

Printer-friendly Version

Interactive Discussion



## Six years of TES tropospheric ozone retrievals validated

W. W. Verstraeten et al.

Title Page

Abstract

Introduction

Conclusions

References

Tables

Figures

◀

▶

◀

▶

Back

Close

Full Screen / Esc

Printer-friendly Version

Interactive Discussion



is considerable support for such a method because of the observed linear relationship between TES and sonde ozone concentrations reported by Nassar et al. (2008) and confirmed in this study. Assuming that the (kernel convolved) sonde measurements are a close approximation of the “true” ozone concentrations at 464 hPa, we perform a reduced major axis regression (Clarke et al., 1980) of the TES data (at 464 hPa) to the sonde data, and interpret the regression coefficients (intercept and slope) as correction factors to the TES data ( $x_{\text{sonde}} = a + bx_{\text{TES}}$ ). The regression coefficients  $a$  and  $b$ , could be used to correct TES ozone retrievals for situations without coinciding ozonesondes. Table 2 gives an overview of correction functions based on the linear regression between sonde and TES ozone data at the 464 hPa pressure level. Using the slopes and intercepts of Table 2, and inserting the TES values, the corrected TES values are moving more closely to the sonde values reducing the mean biases with a value up till 80 % of the number before the correction was applied. The results in Table 2 suggest that the bias in the Tropics and Sub-tropics is mostly additive in nature (slopes: 0.94 to 1.01; intercepts:  $-5.1$  to  $-0.4$  ppbv), in contrast to the northern and southern mid-latitudes where the bias has both an additive (intercepts:  $+2.9$  to  $+7.6$  ppbv) as well as a multiplicative (slopes: 0.78 to 0.87) component. The greater impact of the multiplicative component at higher latitudes might be caused by the reduced vertical sensitivity compared to the Tropics.

## 6 Robustness of the TES-sonde bias in time

We will now investigate the robustness of the TES bias over the six-year time period covered in this study. In order to use TES retrievals to study year-to-year changes in tropospheric ozone, the long-term stability of the satellite retrievals must first be assured. Here we investigate the stability of the TES ozone bias at 464 hPa in the northern mid-latitudes, where sufficient validation data is available. From a linear regression fitted to the compiled time series (of monthly means) of the TES-sonde biases for the complete period 2005–2009 (for 2010, not enough data was available to compute monthly

## Six years of TES tropospheric ozone retrievals validated

W. W. Verstraeten et al.

Title Page

Abstract

Introduction

Conclusions

References

Tables

Figures

⏪

⏩

◀

▶

Back

Close

Full Screen / Esc

Printer-friendly Version

Interactive Discussion



means for each month), we test for the presence of a trend in the TES bias. Figure 6 shows the result of a simple (unweighted) linear regression to the monthly mean TES biases for the northern mid-latitudes at 464 hPa. The TES bias changes over time as  $y = 6.9 - 0.01x$  where the intercept is high (+6.9 ppbv), and the slope is close to zero ( $-0.01 \text{ ppbv month}^{-1}$ ). For comparison, a 12-month running mean is also shown in Fig. 6, and this running mean bias is highly consistent with the regression-based estimate of the trend. The p-value is 0.49, i.e. much higher than 0.05, so that the null hypothesis (slope equals zero) should be accepted. This demonstrates that the TES bias does not increase over longer time periods, which supports the notion of temporal stability of the TES retrievals thanks to the instrumental and calibration stability (Connor et al., 2011). The +6.9 ppbv intercept of the fitted linear regression confirms the mean bias shown in Fig. 5 (+6.6 ppbv) for northern mid-latitudes, and provides confidence in our assertion that TES is systematically and persistently biased high by approximately 7 ppbv for the northern mid-latitudes. Since the amount of data pairs for the monthly mean biases is not sufficient to assess the trends in the other regions in a similar manner, we use seasonal mean biases for the other latitude zones. Table 1 list the slopes and intercepts from linear regressions to seasonally averaged TES-sonde biases for the period 2005–2010 at the 464 hPa pressure level for all latitude zones, and for completeness we also include the trend results for the northern mid-latitudes based on the seasonal mean biases. For none of the regions we find trends in the TES bias that differ substantially from the null hypothesis. In any case, the p-values show that none of the slopes are significant to the extent that the null hypothesis (no trend in the TES bias) can be rejected. We therefore conclude that the bias in TES ozone retrievals is stable over the 2005–2010 period, and that the TES V004 record is appropriate for analysing year-to-year changes (or “trends”) in tropospheric ozone, at least for the 464 hPa level.

## 7 Conclusions

Tropospheric Emission Spectrometer (TES) V004 nadir ozone profiles were validated with more than 4400 coinciding ozonesonde measurements taken across the world and during the period 2005–2010. We applied the TES operator (averaging kernel and vector constraints) to the sonde data to ensure that the influence of the TES a priori profile cancels from the comparison, and find that TES V004 ozone retrievals are generally biased high by 2–7 ppbv in the troposphere, consistent with validation results from earlier studies. Because TES has up to two degrees of freedom for signal in the troposphere, we distinguish upper troposphere and lower troposphere mean biases. The lower troposphere ozone biases ranged from +3.9 to +6.0 ppbv, excluding the Arctic and Antarctic where sensitivity was very low and hence no valid results could be drawn. In the upper troposphere, TES ozone biases range from –0.4 to +13.3 ppbv. Because our results are highly consistent with the findings of Nassar et al. (2008), who validated TES V002 retrievals, we conclude that V004 retrievals have not improved much over V002, at least not in terms of improved accuracy. Focusing on the 464 hPa retrieval level, broadly representative for tropospheric ozone, we find significant differences between the TES biases for the Tropics, sub-tropics, and mid-latitudes. The TES bias is generally smallest (+3 ppbv) and mostly additive over the Tropics, and highest over the northern mid-latitudes (+7 ppbv, with an additive as well as a multiplicative component), possibly reflecting better retrieval sensitivity (enhanced brightness temperature) and less influence from stratosphere-troposphere exchange in the Tropics. Establishing such a bias pattern is important in order to make meaningful use of TES O<sub>3</sub> data in applications such as model evaluation, trend analysis, or data assimilation. The relatively long-term record of TES-ozonesonde comparisons, allowed us for the first time to conduct a time series analysis of the monthly and annual mean TES biases in free tropospheric ozone, at 464 hPa. For none of the regions we found any significant trend ( $p > 0.05$ ) over time. Based on the data pairs linear regression corrections were proposed for free tropospheric ozone retrieved from TES for all the data and per

## Six years of TES tropospheric ozone retrievals validated

W. W. Verstraeten et al.

Title Page

Abstract

Introduction

Conclusions

References

Tables

Figures



Back

Close

Full Screen / Esc

Printer-friendly Version

Interactive Discussion





latitude zone. For the Northern mid-latitudes, where enough data pairs were available, seasonal corrections were computed. Thanks to (i) the good correlation between TES and ozonesondes, (ii), the robust bias patterns, and (iii) the fact that the time series of the TES-sonde ozone biases are not changing over time, it can be concluded that TES is an appropriate instrument for trend analysis of free tropospheric ozone time series.

*Acknowledgements.* This research was funded by the Netherlands Organisation for Scientific Research, NWO Vidi grant 864.09.001. We thank all those responsible for the WOUDC measurements and archives for making the ozonesonde data readily available and accessible for this work.

## References

- Beer, R.: TES on the Aura Mission: scientific objectives, measurements and analysis overview, *IEEE T. Geosci. Remote*, 44, 1102–1105, 2006.
- Beer, R., Glavich, T. A., and Rider, D. M.: Tropospheric emission spectrometer for the Earth Observing System's Aura satellite, *Appl. Optics*, 40, 2356–2367, 2001.
- Bowman, K. W., Steck, T., Worden, H. M., Worden, J., Clough, S., and Rodgers, C.: Capturing time and vertical variability of tropospheric ozone: a study using TES nadir retrievals, *J. Geophys. Res.*, 107, 4723, doi:10.1029/2002JD002150, 2002.
- Bowman, K. W., Rodgers, C. D., Kulawik, S. S., Worden, J., Sarkissian, E., Osterman, G., Steck, T., Lou, M., Eldering, A., Shephard, M., Worden, H., Lampel, M., Clough, S., Brown, P., Rinsland, C., Gunson, M., and Beer, R.: Tropospheric emission spectrometer: retrieval method and error analysis, *IEEE T. Geosci. Remote*, 44, 1297–1307, doi:10.1109/TGRS.2006.871234, 2006.
- Boxe, C. S., Worden, J. R., Bowman, K. W., Kulawik, S. S., Neu, J. L., Ford, W. C., Osterman, G. B., Herman, R. L., Eldering, A., Tarasick, D. W., Thompson, A. M., Doughty, D. C., Hoffmann, M. R., and Oltmans, S. J.: Validation of northern latitude Tropospheric Emission Spectrometer stare ozone profiles with ARC-IONS sondes during ARCTAS: sensitivity, bias and error analysis, *Atmos. Chem. Phys.*, 10, 9901–9914, doi:10.5194/acp-10-9901-2010, 2010.

## Six years of TES tropospheric ozone retrievals validated

W. W. Verstraeten et al.

Title Page

Abstract

Introduction

Conclusions

References

Tables

Figures



Back

Close

Full Screen / Esc

Printer-friendly Version

Interactive Discussion



## Six years of TES tropospheric ozone retrievals validated

W. W. Verstraeten et al.

Title Page

Abstract

Introduction

Conclusions

References

Tables

Figures

◀

▶

◀

▶

Back

Close

Full Screen / Esc

Printer-friendly Version

Interactive Discussion



- Brasseur, G. P., Hauglustaine, D. A., Walters, S., Rasch, P. J., Müller, J. F., Granier, C., and Tie, X. X.: MOZART, a global chemical transport model for ozone and related chemical tracers: 1. Model description, *J. Geophys. Res.*, 103, 28265–28289, doi:10.1029/98JD02397, 1998.
- 5 Chan, C., Li, Y., Tang, J., Leung, Y., Wu, M., Chan, L. Y., Chang, C., and Liu, S.: An analysis on abnormally low ozone in the upper troposphere over subtropical east Asia in spring 2004, *Atmos. Environ.*, 41, 3556–3564, 2007.
- Clarke, M. R. B.: The reduced major axis of a bivariate sample, *Biometrika*, 67, 441–446, 1980.
- Clerbaux, C., Boynard, A., Clarisse, L., George, M., Hadji-Lazaro, J., Herbin, H., Hurtmans, D.,  
10 Pommier, M., Razavi, A., Turquety, S., Wespes, C., and Coheur, P.-F.: Monitoring of atmospheric composition using the thermal infrared IASI/MetOp sounder, *Atmos. Chem. Phys.*, 9, 6041–6054, doi:10.5194/acp-9-6041-2009, 2009.
- Clough, S., Shepard, M., Worden, J. R., Brown, P. D., Worden, H. M., Lou, Rodgers, C., Rinsland, A., Goldman, C., Brown, L., Eldering, A., Kulawik, S. S., Cady-Pereira, K., Osterman, G.,  
15 and Beer, R.: Forward model and Jacobians for Tropospheric Emission Spectrometer retrievals, *IEEE T. Geosci. Remote*, 44, 1308–1323, 2006.
- Connor, T. C., Shephard, M. W., Payne, V. H., Cady-Pereira, K. E., Kulawik, S. S., Luo, M., Osterman, G., and Lampel, M.: Long-term stability of TES satellite radiance measurements, *Atmos. Meas. Tech.*, 4, 1481–1490, doi:10.5194/amt-4-1481-2011, 2011.
- 20 Crutzen, P.: The role of NO and NO<sub>2</sub> in the chemistry of the troposphere and stratosphere, in: *Annual Review of Earth and Planetary Sciences*, vol. 7 (A79-37176 15-42), Annual Reviews, Inc., Palo Alto, CA, 443–472, 1979.
- Eldering, A., Kulawik, S. S., Worden, J., Bowman, K., and Osterman, G.: Implementation of cloud retrievals for TES atmospheric retrievals: 2. Characterization of cloud  
25 top pressure and effective optical depth retrievals, *J. Geophys. Res.*, 113, D16S37, doi:10.1029/2007JD008858, 2008.
- Jourdain, L., Worden, H. M., Bowman, K., Li, Q. B., Eldering, A., Kulawik, S. S., Osterman, G., Boersma, K. F., Fisher, B., Rinsland, C. P., Beer, R., and Gunson, M.: Tropospheric vertical distribution of tropical Atlantic ozone observed by TES during the northern African biomass  
30 burning season, *Geophys. Res. Lett.*, 34, L04810, doi:10.1029/2006GL028284, 2007.
- Komhyr, W. D.: Electrochemical concentration cells for gas analysis, *Ann. Geophys.*, 25, 203–210, 1969,  
<http://www.ann-geophys.net/25/203/1969/>.

**Six years of TES  
tropospheric ozone  
retrievals validated**

W. W. Verstraeten et al.

[Title Page](#)[Abstract](#)[Introduction](#)[Conclusions](#)[References](#)[Tables](#)[Figures](#)[◀](#)[▶](#)[◀](#)[▶](#)[Back](#)[Close](#)[Full Screen / Esc](#)[Printer-friendly Version](#)[Interactive Discussion](#)

Kulawik, S. S., Osterman, G., Jones, D. B. A., and Bowman, K. W.: TES atmospheric profile retrieval characterization: an orbit of simulated observations, *IEEE T. Geosci. Remote*, 44, 1324–1332, doi:10.1109/TGRS.2006.871207, 2006a.

5 Kulawik, S. S., Worden, J., Eldering, A., Bowman, K., Gunson, M., Osterman, G. B., Zhang, L., Clough, S., Shephard, M. W., and Beer, B.: Implementation of cloud retrievals for Tropospheric Emission Spectrometer (TES) atmospheric retrievals: part 1. Description and characterization of errors on trace gas retrievals, *J. Geophys. Res.*, 111, D24204, doi:10.1029/2005JD006733, 2006b.

10 Liu, J. J., Jones, D. B. A., Worden, J. R., Noone, D., Parrington, M., and Kar, J.: Analysis of the summertime buildup of tropospheric ozone abundances over the Middle East and North Africa as observed by the Tropospheric Emission Spectrometer instrument, *J. Geophys. Res.*, 114, D05304, doi:10.1029/2008JD010993, 2009.

15 Liu, X., Bhartia, P. K., Chance, K., Spurr, R. J. D., and Kurosu, T. P.: Ozone profile retrievals from the Ozone Monitoring Instrument, *Atmos. Chem. Phys.*, 10, 2521–2537, doi:10.5194/acp-10-2521-2010, 2010.

Logan, J. A.: An analysis of ozonesonde data for the troposphere: recommendations for testing 3-D models and development of a gridded climatology for tropospheric ozone, *J. Geophys. Res.*, 104, 16115–16149, doi:10.1029/1998JD100096, 1999.

20 Logan, J. A., Staehelin, J., Megretskaia, I. A., Cammas, J.-P., Thouret, V., Claude, H., De Backer, H., Steinbacher, M., Scheel, H. E., Stübi, R., Fröhlich, M., and Derwent, R.: Changes in ozone over Europe: analysis of ozone measurements from sondes, regular aircraft (MOZAIC) and alpine surface sites, *J. Geophys. Res.*, 117, D09301, doi:10.1029/2011JD016952, 2012.

25 Nassar, R., Logan, J. A., Worden, H. M., Megretskaia, I. A., Bowman, K. W., Osterman, G. B., Thompson, A. M., Tarasick, D. W., Austin, S., Claude, H., Dubey, M. K., Hocking, W. K., Johnson, B. J., Joseph, E., Merrill, J., Morris, G. A., Newchurch, M., Oltmans, S. J., Posny, F., Schmidlin, F., Vömel, H., Whiteman, D. N., and Witte, J. C.: Validation of tropospheric emission spectrometer (TES) nadir ozone profiles using ozonesonde measurements, *J. Geophys. Res.*, 113, D15S17, doi:10.1029/2007JD008819, 2008.

30 Osterman, G.: TES Validation Report (Version F04\_04 Data), Jet Propulsion Laboratory, California Institute of Technology, Pasadena, CA, USA, 2007.

Osterman, G., Kulawik, S. S., Worden, H. M., Richards, N. A. D., Fisher, B. M., Eldering, A., Shephard, M. W., Froidevaux, L., Labow, G., Luo, M., Herman, R. L., Bowman, K. W., and

## Six years of TES tropospheric ozone retrievals validated

W. W. Verstraeten et al.

Title Page

Abstract

Introduction

Conclusions

References

Tables

Figures

◀

▶

◀

▶

Back

Close

Full Screen / Esc

Printer-friendly Version

Interactive Discussion



Thompson, A. M.: Validation of Tropospheric Emission Spectrometer (TES) measurements of the total, stratospheric and tropospheric column abundance of ozone, *J. Geophys. Res.*, 113, D15S16, doi:10.1029/2007JD008801, 2008.

Richards, N. A. D., Osterman, G. B., Browell, E. V., Hair, J. W., Avery, M., and Li, Q.: Validation of tropospheric emission spectrometer ozone profiles with aircraft observations during the intercontinental chemical transport experiment – b, *J. Geophys. Res.*, 113, D16S29, doi:10.1029/2007JD008815, 2008.

Rodgers, C. D.: *Inverse Methods for Atmospheric Sounding: Theory and Practice*, World Sci., London, 2000.

Rodgers, C. D. and Connor, B. J.: Intercomparison of remote sounding instruments, *J. Geophys. Res.*, 108, 4116, doi:10.1029/2002JD002299, 2003.

Smit, H. G. J., Straeter, W., Johnson, B., Oltmans, S., Davies, J., Tarasick, D. W., Hoegger, B., Stubi, R., Schmidlin, F., Northam, T., Thompson, A., Witte, J., Boyd, I., and Posny, F.: Assessment of the performance of ECCozonesondes under quasi-flight conditions in the environmental simulation chamber: insights from the Juelich Ozone Sonde Intercomparison Experiment (JOSIE), *J. Geophys. Res.*, 112, D19306, doi:10.1029/2006JD007308, 2007.

Stübi, R., Levrat, G., Hoegger, B., Viatte, P., Staehelin, J., and Schmidlin, F. J.: In-flight comparison of brewer-mast and electrochemical concentration cell ozonesondes, *J. Geophys. Res.*, 113, D13302, doi:10.1029/2007JD009091, 2008.

Worden, H. M., Logan, J. A., Worden, J. R., Beer, R., Bowman, K., Clough, S. A., Eldering, A., Fisher, B. M., Gunson, M. R., Herman, R. L., Kulawik, S. S., Lampel, M. C., Luo, M., Megretskaia, I. A., Osterman, G. B., and Shephard, M. W.: Comparisons of tropospheric emission spectrometer (TES) ozone profiles to ozonesondes: methods and initial results, *J. Geophys. Res.*, 112, D03309, doi:10.1029/2006JD007258, 2007.

Worden, H. M., Bowman, K. W., Worden, J. R., Eldering, A., and Beer, E.: Satellite measurements of the clear-sky greenhouse effect from tropospheric ozone, *Nat. Geosci.*, 1, 305–308, doi:10.1038/ngeo182, 2008.

Worden, J., Jones, D. B. A., Liu, J., Parrington, M., Bowman, K., Stajner, I., Beer, R., Jiang, J., Thouret, V., Kulawik, S., Li, J.-F. L., Verma, S., and Worden, H.: Observed vertical distribution of tropospheric ozone during the Asian summertime monsoon, *J. Geophys. Res.*, 114, D13304, doi:10.1029/2008JD010560, 2009.

WOUDC: *User Guide to the WMO/GAW World Ozone Data Centre – Version 3.0*, 2007.

**Six years of TES  
tropospheric ozone  
retrievals validated**

W. W. Verstraeten et al.

Title Page

Abstract

Introduction

Conclusions

References

Tables

Figures



Back

Close

Full Screen / Esc

Printer-friendly Version

Interactive Discussion



- Zhang, L., Jacob, D. J., Bowman, K. W., Logan, J. A., Turquety, S., Hudman, R. C., Li, Q., Beer, R., Worden, H. M., Worden, J. R., Rinsland, C. P., Kulawik, S. S., Lampel, M. C., Shephard, M. W., Fisher, B. M., Eldering, A., and Averyet, M. A.: Continental outflow of ozone pollution as determined by O<sub>3</sub>-CO correlations from the TES satellite instrument, *Geophys. Res. Lett.*, 33, L18804, doi:10.1029/2006gl026399, 2006.
- 5 Zhang, L., Jacob, D. J., Liu, X., Logan, J. A., Chance, K., Eldering, A., and Bojkov, B. R.: Intercomparison methods for satellite measurements of atmospheric composition: application to tropospheric ozone from TES and OMI, *Atmos. Chem. Phys.*, 10, 4725–4739, doi:10.5194/acp-10-4725-2010, 2010.
- 10 Zörner, J.: Evaluating Spaceborne Tropospheric Ozone Time Series with Sonde Data, M.Sc.-Thesis, Faculty of Bioscience-Engineering, Katholieke Universiteit Leuven, Leuven, Belgium, 2012.

## Six years of TES tropospheric ozone retrievals validated

W. W. Verstraeten et al.

**Table 1.** Slope and intercept of a (unweighted) linear regression fit to the seasonal mean TES-sonde biases per latitude zone at the 464 hPa pressure level for the period 2005–2010. The standard error (SE) is also given for the slope ( $\text{ppbv season}^{-1}$ ) and the intercept (ppbv). The mean annual bias (ppbv) is also shown.

Region	Slope $\pm$ SE [ppbv $\text{season}^{-1}$ ]	Intercept $\pm$ SE [ppbv]	P-value	Mean Bias
Northern mid-latitudes	$-0.12 \pm 0.11$	$7.6 \pm 1.3$	0.00	6.3
Northern sub-tropics	$-0.26 \pm 0.30$	$6.3 \pm 3.5$	0.09	3.7
Tropics	$0.17 \pm 0.16$	$1.0 \pm 2.0$	0.62	2.8
Southern mid-latitudes	$0.29 \pm 0.23$	$0.7 \pm 2.7$	0.79	4.1

[Title Page](#)
[Abstract](#)
[Introduction](#)
[Conclusions](#)
[References](#)
[Tables](#)
[Figures](#)
[◀](#)
[▶](#)
[◀](#)
[▶](#)
[Back](#)
[Close](#)
[Full Screen / Esc](#)
[Printer-friendly Version](#)
[Interactive Discussion](#)


## Six years of TES tropospheric ozone retrievals validated

W. W. Verstraeten et al.

**Table 2.** Slope, intercept and  $R^2$  for a reduced major axis regression fit of sonde ozone ( $y$ ) as a function of TES ozone ( $x$ ) for different latitude zone at the 464 hPa pressure level for the period 2005–2010. The fitted slope is indicative of the multiplicative component of the TES bias, and the intercept of the additive component. The bias is the mean of  $(y-x)$ .

Region		Slope	Intercept [ppbv]	$R^2$	Bias [ppbv]	$n$
All data	All	0.87	2.89	0.55	−4.8	4460
	MAM	0.88	3.65	0.75	−3.7	1159
	JJA	0.81	5.06	0.69	−6.2	1061
	SON	0.84	4.29	0.74	−5.0	1069
	DJF	0.90	1.29	0.75	−4.3	1210
Northern mid-latitude	All	0.78	7.58	0.39	−6.6	1970
	MAM	0.82	5.27	0.65	−6.5	508
	JJA	0.67	15.08	0.44	−7.8	459
	SON	0.71	10.53	0.57	−6.5	476
	DJF	0.79	6.46	0.59	−5.8	539
Northern sub-tropics Tropics	All	1.01	−5.05	0.68	−4.6	188
	All	0.94	−0.43	0.78	−3.4	416
Southern mid-latitude	All	0.88	2.34	0.64	−3.7	75

Title Page

Abstract

Introduction

Conclusions

References

Tables

Figures

◀

▶

◀

▶

Back

Close

Full Screen / Esc

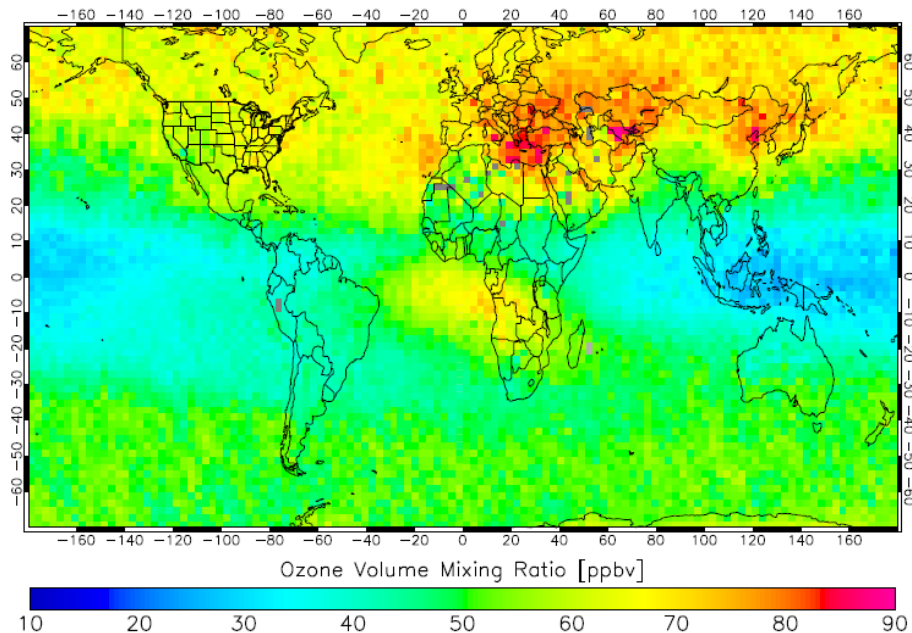
Printer-friendly Version

Interactive Discussion



## Six years of TES tropospheric ozone retrievals validated

W. W. Verstraeten et al.



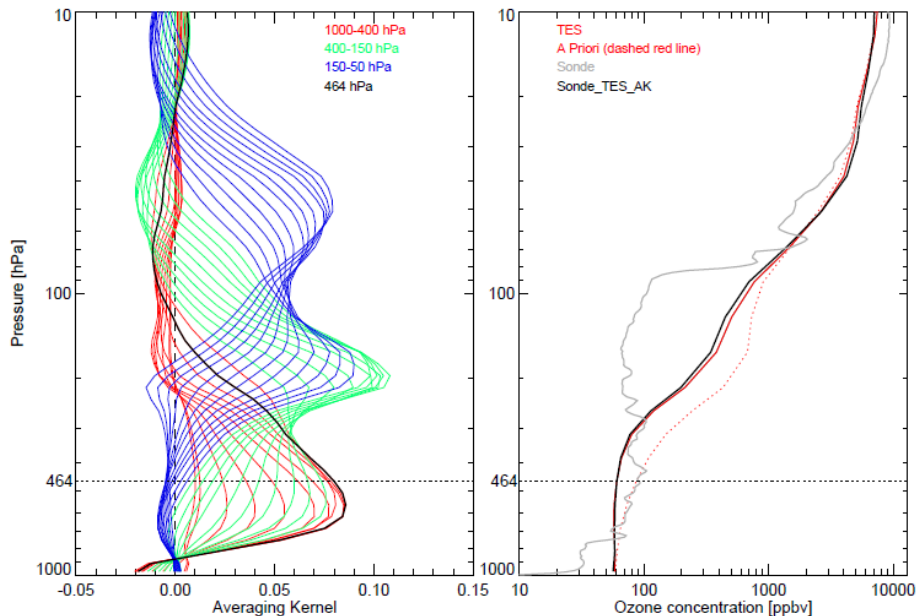
**Fig. 1.** Seasonal average (June-July-August) of tropospheric ozone concentrations at 464 hPa as observed by TES between 2005 and 2010 averaged on a  $3^\circ \times 2^\circ$  (longitude  $\times$  latitude) grid. The effect of the variable MOZART a priori has been removed by reprocessing the TES retrievals with one global and annual mean (MOZART) a priori  $O_3$  profile following the method by Zhang et al. (2006). TES retrievals with residual clouds and errors have been excluded following the standard TES quality flags, leaving typically 50 data points in each grid cell.

[Title Page](#)[Abstract](#)[Introduction](#)[Conclusions](#)[References](#)[Tables](#)[Figures](#)[◀](#)[▶](#)[◀](#)[▶](#)[Back](#)[Close](#)[Full Screen / Esc](#)[Printer-friendly Version](#)[Interactive Discussion](#)



## Six years of TES tropospheric ozone retrievals validated

W. W. Verstraeten et al.

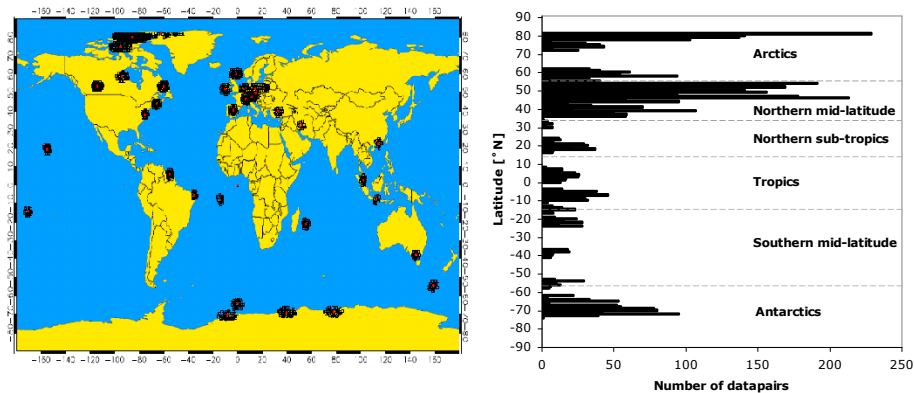


**Fig. 2.** Left panel: typical averaging kernel of the vertical ozone profile as provided by TES over De Bilt, the Netherlands (latitude: 52.10°, longitude: 5.18°, altitude: 9 m, 14 July 2005, 11:23 UTC) for a clear day (DOF = 3.98, with high sensitivity from the 1000–400 hPa range). Right panel: corresponding ozone profiles observed by the ozonesonde lunched at De Bilt (grey), retrieved by TES (red), and the ozonesonde profile as TES would observe it (after application of the TES AK), in black. The dashed red line indicates the MOZART a priori O<sub>3</sub> profile as used in the TES retrieval.

[Title Page](#)[Abstract](#)[Introduction](#)[Conclusions](#)[References](#)[Tables](#)[Figures](#)[◀](#)[▶](#)[◀](#)[▶](#)[Back](#)[Close](#)[Full Screen / Esc](#)[Printer-friendly Version](#)[Interactive Discussion](#)

## Six years of TES tropospheric ozone retrievals validated

W. W. Verstraeten et al.

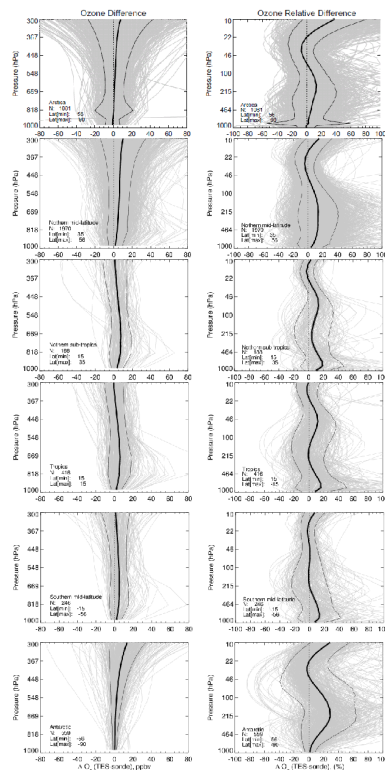


**Fig. 3.** Left panel: location of the worldwide ozonesonde profiles of WOUDC (red dots) used in this analysis together with their coincident TES measurements (squares). Right panel: distribution of the amount of TES-ozonesonde matchups available for this study as a function of latitude. The dashed grey lines indicate the regions used in this study to evaluate the TES biases in more detail.

[Title Page](#)[Abstract](#)[Introduction](#)[Conclusions](#)[References](#)[Tables](#)[Figures](#)[◀](#)[▶](#)[◀](#)[▶](#)[Back](#)[Close](#)[Full Screen / Esc](#)[Printer-friendly Version](#)[Interactive Discussion](#)

## Six years of TES tropospheric ozone retrievals validated

W. W. Verstraeten et al.



**Fig. 4.** Absolute TES-sonde differences (left panels) and relative differences (right panels) for six latitude zones. Individual difference profiles are shown in grey, the mean difference and 1 standard deviation profiles are overlaid in black.  $N$  is the number of valid profiles after flagging TES data.

Title Page

Abstract

Introduction

Conclusions

References

Tables

Figures

◀

▶

◀

▶

Back

Close

Full Screen / Esc

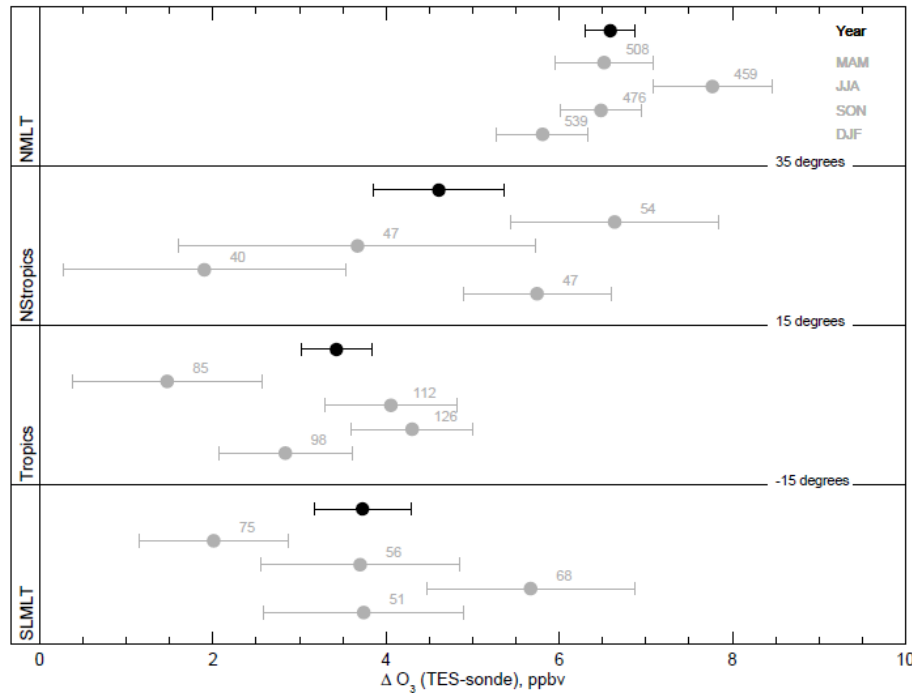
Printer-friendly Version

Interactive Discussion



## Six years of TES tropospheric ozone retrievals validated

W. W. Verstraeten et al.



**Fig. 5.** Mean 2005–2010 TES bias in ozone at 464 hPa per latitude zone (black symbols) and their standard errors (including data pairs numbers and standard errors). Grey symbols indicate the seasonal mean biases and their standard errors. NMLT: Northern mid-latitudes; NSTropics: Northern sub-tropics; SLMLT: Southern lower and mid-latitudes.

Title Page

Abstract Introduction

Conclusions References

Tables Figures

◀ ▶

◀ ▶

Back Close

Full Screen / Esc

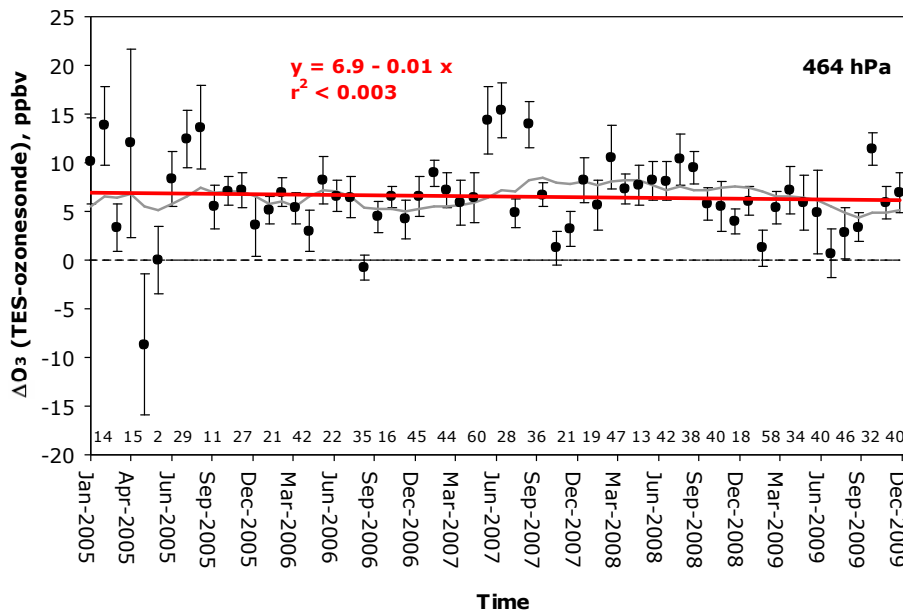
Printer-friendly Version

Interactive Discussion



## Six years of TES tropospheric ozone retrievals validated

W. W. Verstraeten et al.



**Fig. 6.** Time series of the monthly mean bias between TES and sonde free tropospheric ozone for the northern mid-latitudes at 464 hPa in the period 2005–2009. Black symbols indicate the monthly mean bias (TES-ozonesonde) and their standard error. The red line shows the result of a (unweighted) linear regression analysis to the monthly mean biases. The inset (in red) shows the result of the linear regression to the bias (intercept: +6.9 ppbv, slope:  $-0.01 \text{ ppbv month}^{-1}$ ). The grey line indicates the 12-month running mean of the TES-ozonesonde bias. The numbers close to the x-as represent the amount of data-pairs given for each two months.

Title Page

Abstract

Introduction

Conclusions

References

Tables

Figures

◀

▶

◀

▶

Back

Close

Full Screen / Esc

Printer-friendly Version

Interactive Discussion

