

This discussion paper is/has been under review for the journal Atmospheric Measurement Techniques (AMT). Please refer to the corresponding final paper in AMT if available.

Ten years of MIPAS measurements with ESA Level 2 processor V6 – Part I: retrieval algorithm and diagnostics of the products

P. Raspollini¹, B. Carli¹, M. Carlotti², S. Ceccherini¹, A. Dehn¹¹, B. M. Dinelli³, A. Dudhia⁴, J.-M. Flaud⁵, M. López-Puertas⁷, F. Niro⁶, J. J. Remedios⁸, M. Ridolfi², H. Sembhi⁸, L. Sgheri⁹, and T. von Clarmann¹⁰

¹Istituto di Fisica Applicata “N. Carrara” (IFAC) del Consiglio Nazionale delle Ricerche (CNR), Firenze, Italy

²University of Bologna, Bologna, Italy

³Istituto di Scienza dell’Atmosfera e del Clima (ISAC) del Consiglio Nazionale delle Ricerche (CNR), Bologna, Italy

⁴Atmospheric, Oceanic and Planetary Physics, Clarendon Laboratory, Oxford University, UK

⁵Laboratoire Interuniversitaire des Systèmes Atmosphériques (LISA) CNRS, Univ. Paris 12 et 7, France

⁶SERCO SpA c/o European Space Agency ESA-ESRIN, Frascati, Italy

⁷Instituto de Astrofísica de Andalucía (CSIC), Granada, Spain

Title Page

Abstract

Introduction

Conclusions

References

Tables

Figures

◀

▶

◀

▶

Back

Close

Full Screen / Esc

Printer-friendly Version

Interactive Discussion



⁸Earth Observation Science, Department of Physics and Astronomy,
University of Leicester, UK

⁹Istituto per le Applicazioni del Calcolo (IAC) del Consiglio Nazionale delle Ricerche (CNR),
Section of Florence, Italy

¹⁰Karlsruhe Institute of Technology (KIT), Institute for Meteorology and Climate Research
(IMK), Karlsruhe, Germany

¹¹ESA-ESRIN, Frascati, Italy

Received: 4 December 2012 – Accepted: 28 December 2012 – Published: 15 January 2013

Correspondence to: P. Raspollini (p.raspollini@ifac.cnr.it)

Published by Copernicus Publications on behalf of the European Geosciences Union.

Ten years of MIPAS

P. Raspollini et al.

Title Page

Abstract

Introduction

Conclusions

References

Tables

Figures



Back

Close

Full Screen / Esc

Printer-friendly Version

Interactive Discussion



Abstract

The MIPAS instrument on the ENVISAT satellite has provided vertical profiles of the atmospheric composition on a global scale for almost ten years. The MIPAS mission is divided in two phases, the full resolution phase, from 2002 to 2004, and the optimized resolution phase, from 2005 to 2012, which is characterized by a finer vertical and horizontal sampling attained through a reduction of the spectral resolution.

While the description and characterization of the products of the ESA processor for the full resolution phase has been already described in previous papers, in this paper we focus on the performances of the latest version of the ESA processor, named ML2PP V6, which has been used for reprocessing the entire mission. The ESA processor had to perform the operational near real time analysis of the observations and its products needed to be available for data assimilation. Therefore, it has been designed for fast, continuous and automated analysis of observations made in quite different atmospheric conditions and for a minimum use of external constraints in order to avoid biases in the products.

The dense vertical sampling of the measurements adopted in the second phase of the MIPAS mission resulted in sampling intervals finer than the instantaneous field of view of the instrument. Together with the choice of a retrieval grid aligned with the vertical sampling of the measurements, this made ill-conditioned the retrieval formalism of the MIPAS operational processor. This problem has been handled with minimal changes to the original retrieval approach but with significant improvements nonetheless. The Levenberg-Marquardt method, already present in the retrieval scheme for its capability to provide fast convergence for non-linear problems, is now also exploited for the reduction of the ill-conditioning of the inversion. An expression specifically designed for the regularizing Levenberg-Marquardt method has been implemented for the computation of the covariance matrices and averaging kernels of the retrieved products. The regularization of the Levenberg-Marquardt method is controlled by the convergence criteria and is deliberately kept weak. The resulting oscillations of the retrieved

AMTD

6, 461–518, 2013

Ten years of MIPAS

P. Raspollini et al.

Title Page

Abstract

Introduction

Conclusions

References

Tables

Figures

⏪

⏩

◀

▶

Back

Close

Full Screen / Esc

Printer-friendly Version

Interactive Discussion



profile are a-posteriori damped by an innovative self-adapting Tikhonov regularization. The convergence criteria and the weakness of the self-adapting regularization ensure that minimum constraints are used and the best vertical resolution obtainable from the measurements is achieved in all atmospheric conditions.

Random and systematic errors, as well as vertical and horizontal resolution are compared in the two phases of the mission for all products, namely: temperature, H₂O, O₃, HNO₃, CH₄, N₂O, NO₂, CFC-11, CFC-12, N₂O₅ and ClONO₂. The use in the two phases of the mission of different optimized sets of spectral intervals ensures that, despite the different spectral resolutions, comparable performances are obtained in the whole MIPAS mission in terms of random and systematic errors, while the vertical resolution and the horizontal resolution are significantly better in the case of the optimized resolution measurements.

1 Introduction

The Michelson Interferometer for Passive Atmospheric Sounding (MIPAS) is a limb-viewing Fourier transform spectrometer that sounded the emission of the Earth atmosphere in the spectral range from 685 to 2410 cm⁻¹ on board the ESA Envisat satellite (Fischer et al., 2008).

Its unique observation of the atmospheric emission has provided a continuous (day-night) and regularly spaced sampling which exhaustively characterizes the chemical and physical processes occurring in the atmosphere from 6 to 70 km altitude, for observations made in nominal mode, and up to 170 km for observations made in special modes.

The satellite was launched on the 1 March 2002, and in the first two years of operation (from July 2002 to March 2004) MIPAS acquired, nearly continuously, measurements at full spectral resolution (Full Resolution (FR) measurements, characterized by the spectral sampling of 0.025 cm⁻¹). On the 26 March 2004 FR measurements were interrupted because of anomalies in the velocity of the interferometer drive unit

Ten years of MIPAS

P. Raspollini et al.

Title Page

Abstract

Introduction

Conclusions

References

Tables

Figures

⏪

⏩

◀

▶

Back

Close

Full Screen / Esc

Printer-friendly Version

Interactive Discussion



Ten years of MIPAS

P. Raspollini et al.

of MIPAS and the analysis of instrument reliability and performance recommended the use of a shorter interferometric sweep, corresponding to both a lower spectral resolution (0.0625 cm^{-1}) and a shorter measurement time (1.8 s instead of 4.5 s). Test measurements with reduced spectral resolution were successfully performed in August/September 2004 and, accordingly, the reduction in the measurement time was exploited to make more frequent observations both in the vertical (limb) domain and in the horizontal domain (along the orbit).

With these changes, which provide, for the operational data products, an optimized compromise between spectral and spatial resolutions (Optimized Resolution, OR), MIPAS restarted operations on the 9 January 2005 with a duty cycle shorter than 40 %. Since then, due to the recovering performance of the drive unit, the duty cycle was progressively increased until the 1 December 2007 when a 100 % duty cycle was again attained. MIPAS was successfully operated with this full duty cycle until the 8 April 2012, when an ENVISAT anomaly occurred resulting into the loss of communication between ground and satellite and the end of MIPAS observations (ESA, 2012a).

MIPAS was one of the first Envisat instruments to be fully operational after the launch, providing very high quality Level 1 and Level 2 products. While the ESA operational near real time analysis provided from the very beginning vertical profiles of temperature and of Volume Mixing Ratio (VMR) of H_2O , O_3 , HNO_3 , CH_4 , N_2O and NO_2 from pole to pole, approximately following the orbital track, three other main scientific algorithms have been developed to process MIPAS data. These are the Geofit Multi-Target Retrieval (GMTR) (Carlotti et al., 2006; Dinelli et al., 2010), based on the Optimal Estimation approach (Rodgers, 2000) and performing a two-dimensional analysis of MIPAS measurements, explicitly handling horizontal inhomogeneities; the algorithm obtained by the joint effort of the Institut für Meteorologie und Klimaforschung (IMK) at Forschungszentrum Karlsruhe and the Instituto de Astrofísica de Andalucía (IAA) (von Clarmann et al., 2003b, 2009b), using Tikhonov regularization, capable of handling deviations from Local Thermodynamic Equilibrium (Non-LTE) and taking into account an horizontal gradient of temperature along the line of sight; and the algorithm MORSE

Title Page

Abstract

Introduction

Conclusions

References

Tables

Figures

◀

▶

◀

▶

Back

Close

Full Screen / Esc

Printer-friendly Version

Interactive Discussion



Ten years of MIPAS

P. Raspollini et al.

Title Page	
Abstract	Introduction
Conclusions	References
Tables	Figures
⏪	⏩
◀	▶
Back	Close
Full Screen / Esc	
Printer-friendly Version	
Interactive Discussion	



developed at Oxford University (Dudhia, 2008; Moore and Remedios, 2010), based on the Optimal Estimation approach (Rodgers, 2000) and using the Reference Forward Model (Dudhia, 2005). The four retrieval algorithms differ for some assumptions in the forward model, for the spectral intervals used for the analysis and for the retrieval approach, and a profitable cross-fertilization has occurred among them. Studies have been performed for the FR measurements proving that in general consistent results for the operational species are obtained by the different algorithms (see Fischer et al., 2008; von Clarmann et al., 2003a), while studies on the OR measurements are currently ongoing and will be reported in later publications. Other retrieval schemes, used principally for the retrieval of CFCs from MIPAS measurements, are OPERA (Moore and Remedios, 2008) and JURASSIC (Hoffmann et al., 2008), which use optimal estimation on spectrally integrated radiances.

This paper is focused on the ESA processor, that was used during the ENVISAT mission for both the near real time analysis, whose requirement is the distribution of the products within three hours from the measurement time, and for the off-line analysis, performed on consolidated Level 1 data, that benefits from a posteriori knowledge related to calibration, auxiliary data and precise orbit information. The capacity of operating in near real time made the MIPAS ESA dataset particularly suitable for the use in operational data assimilation systems. Indeed, near real time MIPAS ozone profiles were actively assimilated at ECMWF (European Centre for Medium-Range Weather Forecasts) from October 2003 until the end of March 2004 (Dethof, 2003), and, after the interruption in 2004, from the 8 December 2011 until the 8 April 2012. The assimilation of MIPAS ozone data at ECMWF was proven to substantially improve the quality of the ECMWF ozone analyses (Dragani, 2012; Thépaut et al., 2012), in particular the good vertical resolution of MIPAS in the stratosphere could provide a very useful constraint on the ozone analyses.

The description and characterization of the ESA processor's products of the full resolution phase was already described in (Ridolfi et al., 2000; Raspollini et al., 2006). In this paper we focus on the performances of the latest version of the ESA processor

ML2PP (MIPAS Level 2 Prototype Processor) V6, which has been used for reprocessing the entire MIPAS mission, i.e. including both phases. The complete ML2PP V6 database has been released in 2012 (ESA, 2012b), data access is provided via fast registration at <https://earth.esa.int/web/guest/data-access/browse-data-products>.

ML2PP V6 dataset contains the upgrades that were needed after the change of the operating mode in 2005 both in the algorithm, to cope with the finer altitude sampling of the OR measurements, and in the spectral intervals selected for each retrieval, to cope with the reduced spectral resolution. Since the retrieval is performed at the grid of the measured tangent altitudes and this grid is significantly smaller, for the OR measurements, than the MIPAS Instantaneous Field of View (IFOV, 3 km) in the upper troposphere and lower stratosphere, the retrieval of the OR measurements resulted in an ill-conditioned problem and required a regularization approach that was not previously needed for the analysis of the FR measurements. Furthermore, in order to get similar random and systematic errors and computation time in the two phases of the mission, spectral intervals specifically optimized for the two phases of the mission were used.

Even if the whole MIPAS mission has now been reprocessed with the same algorithm, the different vertical and horizontal samplings and the different spectral intervals used in the two phases of the mission represent a discontinuity in the measurements whose impact on the products has been carefully investigated. This analysis is split in two parts. The first part, covered by this paper, makes an overview of the choices made for the inversion of the OR measurements starting from the retrieval approach designed for the FR measurements. The paper is then focused on the description of the upgraded diagnostics used for the characterization of the Level 2 products and the comparison of the performances in the two phases of the mission in terms of random and systematic errors and spatial resolution. The second part, covered by a companion paper, will study whether the discontinuity in MIPAS measurements in the two phases has an impact on the bias of the products between the two phases of the mission.

Ten years of MIPAS

P. Raspollini et al.

Title Page

Abstract

Introduction

Conclusions

References

Tables

Figures



Back

Close

Full Screen / Esc

Printer-friendly Version

Interactive Discussion



2 Characteristics of the two phases of MIPAS mission

In both phases of the mission different measurement modes are used to observe different processes in the atmosphere with either better sampling or better altitude coverage.

The nominal mode (NOM) is the basic mode used to study chemistry and transport and to provide a database for climatology, trend analyses and near real time applications. It is designed to cover the upper troposphere, the stratosphere and the lower mesosphere (boundaries 6–70 km).

The Upper Troposphere–Lower Stratosphere (UT-LS) measurement mode, called UTLS-1, is tailored to studies of atmospheric processes in the UT-LS region (including the tropical tropopause layer). It provides a trade-off between vertical and horizontal resolution as well as vertical coverage, ensuring a fine vertical and along-track sampling between the upper troposphere and the middle stratosphere.

The Middle Atmosphere (MA) mode covers most of the stratosphere, the mesosphere and the lower thermosphere (from 18 to 102 km). This mode is dedicated to studying linkages between the upper atmosphere and the stratosphere, i.e. the global circulation and transport of CO and NO_x from the mesosphere down to the stratosphere in polar winter hemispheres, as well as Solar Proton Events affecting both the upper atmosphere and the stratosphere. This mode is also used to monitor the quality of operational retrievals that neglect deviations from Local Thermodynamic Equilibrium (Non-LTE).

The Upper Atmosphere (UA) mode covers the altitude region from 42 to 172 km with 35 scans. This mode is mainly dedicated to measurements of high-altitude NO and temperature.

Table 1 summarizes the characteristics of FR measurements and OR measurement modes. For FR measurements details are provided only for the NOM mode, which is the most used one in the first phase. For OR measurements details are provided for the NOM, UTLS-1, MA and UA measurement modes. UTLS-1 mode was the prevalent mode in the years 2005 and 2006. Then, since December 2007, when MIPAS returned

AMTD

6, 461–518, 2013

Ten years of MIPAS

P. Raspollini et al.

Title Page

Abstract

Introduction

Conclusions

References

Tables

Figures

⏪

⏩

◀

▶

Back

Close

Full Screen / Esc

Printer-friendly Version

Interactive Discussion



Ten years of MIPAS

P. Raspollini et al.

to the 100% duty cycle, regular observations were made with a period of 10 days, consisting of 8 days of NOM mode measurements, 1 day of MA mode and 1 day of UA mode.

In OR measurements, NOM and UTLS-1 modes are characterized by a floating-altitude measurement grid. This means that the limb sounding grid is shifted rigidly with the lowest measured altitude t varying with the latitude, θ , according to: $t = A + B \cos(2\theta) - C \cos(90^\circ - \text{abs}(\theta))$. In this equation $A = 12$ km, $B = 0$ and $C = 7$ km for the NOM mode and $A = 8.5$ km, $B = 3$ km and $C = 0$ for the UTLS-1 mode. The floating-altitude sampling grid is meant to follow roughly the tropopause height along the orbit with the requirement to collect at least one spectrum within the troposphere while avoiding too many spectra affected by clouds.

For a detailed description of all measurement modes used in the two phases of the mission see also Oelhaf (2008), while for a detailed calendar of MIPAS measurements see Dudhia (2008).

MIPAS ML2PP V6 dataset covers all described measurement modes, although MA and UA modes are analyzed by the ESA processor only up to 70 km, since above this altitude the impact of Non-LTE cannot be neglected and Non-LTE effects are not handled in the forward model of the ESA processor. Analysis of MA and UA modes on the full altitude range are performed with the IMK-IAA algorithm García-Comas et al. (2012); Bermejo-Pantaleon et al. (2011), while the analysis of UTLS-1 mode with IMK processor is described in Chauhan et al. (2009).

3 Upgrades in the code

The measurements of the first phase of the MIPAS mission were originally reprocessed by the ESA Instrument Processing Facilities (IPF) V4.1 and V4.2, based on the Optimized Retrieval Model (ORM) code described in Ridolfi et al. (2000) and in Raspollini et al. (2006). These measurements were also validated with respect to correlative

[Title Page](#)
[Abstract](#)
[Introduction](#)
[Conclusions](#)
[References](#)
[Tables](#)
[Figures](#)
[⏪](#)
[⏩](#)
[◀](#)
[▶](#)
[Back](#)
[Close](#)
[Full Screen / Esc](#)
[Printer-friendly Version](#)
[Interactive Discussion](#)


measurements (Ridolfi et al., 2007; Cortesi et al., 2007; Wang et al., 2007; Payan et al., 2009; Wetzel et al., 2007 all contained in a MIPAS Special Issue, 2006).

The main features of the algorithm originally designed for the analysis of the FR measurements are:

- 5 (1) Use of microwindows (MWs), i.e. selected spectral intervals containing relevant information on target parameters and minimizing the systematic errors, which arise chiefly from approximations in the forward model and instrument errors (Dudhia, 2002; von Clarmann et Echle, 1998).

- 10 (2) The forward model computes the radiative transfer integral properly taking into account the atmospheric vertical inhomogeneities but assuming homogeneity in the horizontal direction. Atmosphere is assumed to be in Local Thermodynamic Equilibrium (LTE) and in hydrostatic equilibrium. The characteristics of the instrument (Instrument Line Shape (ILS) and IFOV) are accurately modeled. The impact of unaccounted atmospheric effects (Non-LTE, interfering species, etc.) is minimized through the MW selection. Scattering is not included in the radiative transfer integral, and the spectra affected by thicker clouds, identified by the cloud filtering algorithm (Spang et al., 2002, 2004, and Raspollini et al., 2006), are not included in the analysis.

- 15 (3) The altitude grid of the retrieval is identified by the tangent points of the limb-measurements. Only for some species characterized by a low information content, a retrieval grid coarser than the measurement grid is used in order to avoid a too large ill-conditioning.

- 20 (4) For each scan, sequential retrieval of the target species is performed (first H_2O , then O_3 , HNO_3 , CH_4 , N_2O and NO_2) after the simultaneous retrieval of the pressure corresponding to the tangent altitudes and the related temperature values (ρT retrieval).

- 25

Ten years of MIPAS

P. Raspollini et al.

Title Page

Abstract

Introduction

Conclusions

References

Tables

Figures

◀

▶

◀

▶

Back

Close

Full Screen / Esc

Printer-friendly Version

Interactive Discussion



Ten years of MIPAS

P. Raspollini et al.

Title Page

Abstract

Introduction

Conclusions

References

Tables

Figures

◀

▶

◀

▶

Back

Close

Full Screen / Esc

Printer-friendly Version

Interactive Discussion



- (5) MW-dependent continuum absorption cross-section profiles and MW-dependent, but height-independent offset calibration values are jointly retrieved with either VMR or pT retrieval.
- (6) Initial guess of the target species is determined using the profiles retrieved in the previous scan of the orbit appropriately combined with climatological and ECMWF profiles (if available).
- (7) Assumed profiles of the interfering species are given, whenever available, by the profiles retrieved in the previous retrievals (either the previous scan or the previous retrievals of the same scan) appropriately combined with climatological and ECMWF profiles (if available).
- (8) Global fit analysis (Carlotti, 1988) is performed, consisting of the simultaneous fit of the whole limb scanning sequence of the spectra acquired at different tangent altitudes.
- (9) Non-linear least squares fit is used with Levenberg-Marquardt minimization and regularizing method (Levenberg, 1944; Marquardt, 1963; Hanke, 1997).

In the following sections, the main changes to the retrieval algorithm are described relative to the algorithm for FR measurements reported in Ridolfi et al. (2000) and in Raspollini et al. (2006). These include the adaptations to the Levenberg-Marquardt method, already utilized in the original FR algorithm, to avoid the ill-conditioning of the retrieval approach and an a posteriori self-adapting Tikhonov regularization technique. Diagnostics of the products specifically studied for the regularizing Levenberg-Marquardt method is also included as well as upgrades to the auxiliary data. Finally, new products are described.

3.1 The regularizing Levenberg-Marquardt method

The ESA processor, being specifically designed for the near real time analysis of MIPAS measurements, had to be capable of operating in an automatic way for a long

period. These requirements, together with the choice of making a minimal use of external constraints in order to avoid biases in the retrieved profiles, guided our design of the retrieval approach.

Let \mathbf{y} be the m -dimensional vector of observations with error covariance matrix \mathbf{S}_y and $\mathbf{f}(\mathbf{x})$ the forward model, a non-linear function of the n -dimensional atmospheric state vector \mathbf{x} . Due to nonlinearities, the problem is solved in a context of Newtonian iterations where $\mathbf{f}(\mathbf{x})$ is linearized:

$$\mathbf{f}(\mathbf{x}) = \mathbf{f}(\mathbf{x}_i) + \mathbf{K}_i(\mathbf{x} - \mathbf{x}_i), \quad (1)$$

with i index of iteration and \mathbf{K}_i Jacobian matrix $\frac{\partial \mathbf{f}}{\partial \mathbf{x}}$ calculated at the linearization point \mathbf{x}_i . The least squares solution of the inverse problem minimizes the cost function

$$\chi^2 = (\mathbf{y} - \mathbf{f}(\mathbf{x}))^T \mathbf{S}_y^{-1} (\mathbf{y} - \mathbf{f}(\mathbf{x})). \quad (2)$$

Minimization of χ^2 leads to the Gauss-Newton (GN) iteration:

$$\mathbf{x}_{i+1} = \mathbf{x}_i + \left(\mathbf{K}_i^T \mathbf{S}_y^{-1} \mathbf{K}_i \right)^{-1} \mathbf{K}_i^T \mathbf{S}_y^{-1} (\mathbf{y} - \mathbf{f}(\mathbf{x}_i)). \quad (3)$$

In our application we modify Eq. (3) exploiting the Levenberg–Marquardt (Marquardt, 1963; Levenberg, 1944) method:

$$\mathbf{x}_{i+1} = \mathbf{x}_i + \left(\mathbf{K}_i^T \mathbf{S}_y^{-1} \mathbf{K}_i + \alpha_i \mathbf{D}_i \right)^{-1} \mathbf{K}_i^T \mathbf{S}_y^{-1} (\mathbf{y} - \mathbf{f}(\mathbf{x}_i)), \quad (4)$$

where \mathbf{D}_i is chosen to be a diagonal matrix with elements equal to those in the diagonal of $\mathbf{K}_i^T \mathbf{S}_y^{-1} \mathbf{K}_i$.

The parameter α_i is adjusted according to a damping–undamping strategy, see e.g. Lampton et al. (2004). The iterations start with a small α_0 . At each iteration, if the new state \mathbf{x}_{i+1} provides a reduction of the chi-square ($\chi^2(\mathbf{x}_{i+1}) < \chi^2(\mathbf{x}_i)$), then \mathbf{x}_{i+1} is accepted and α_{i+1} is selected such that $\alpha_{i+1} < \alpha_i$. If the state \mathbf{x}_{i+1} provides an increase

Title Page

Abstract

Introduction

Conclusions

References

Tables

Figures

◀

▶

◀

▶

Back

Close

Full Screen / Esc

Printer-friendly Version

Interactive Discussion



Ten years of MIPAS

P. Raspollini et al.

Title Page

Abstract

Introduction

Conclusions

References

Tables

Figures

◀

▶

◀

▶

Back

Close

Full Screen / Esc

Printer-friendly Version

Interactive Discussion



of the chi-square ($\chi^2(\mathbf{x}_{i+1}) > \chi^2(\mathbf{x}_i)$), then \mathbf{x}_{i+1} is rejected and the iteration is repeated with a larger value of α_j . The iteration is performed until a final iteration criterion is fulfilled (see below).

The Levenberg-Marquardt method has two distinct effects. The first effect is the reduction of the correction applied to the state vector at each iteration, while the correction vector itself is rotated from the GN step direction obtained from Eq. (4) with $\alpha_j = 0$ towards the opposite direction of the gradient of $\chi^2(\mathbf{x})$, i.e. the steepest descent direction. It follows that, with a large enough α_j , the χ^2 of the iterates monotonically decreases. By reducing the step-length, the Levenberg-Marquardt method avoids making a too large correction, taking the solution outside of the linear approximation range.

The second effect, that has been highly exploited for the analysis of the OR measurements due to the increased ill-conditioning of the retrieval problem, is that the inversion of the possibly ill-conditioned matrix $\mathbf{K}_j^T \mathbf{S}_y^{-1} \mathbf{K}_j$ is avoided and replaced by the inversion of the matrix $\mathbf{K}_j^T \mathbf{S}_y^{-1} \mathbf{K}_j + \alpha_j \mathbf{D}_j$ which is better conditioned. This is particularly important when the cost function to be minimized has nearly flat valleys or, that is equivalent, there are subsets of the state space where the cost function has a nearly constant minimum value. The regularizing effect of the Levenberg-Marquardt method is discussed in Hanke (1997); Engl (2000); Doicu et al. (2004); Pujol (2007); Doicu et al. (2010); Hochbruck (2010); Jin (2010); Böckmann et al. (2011).

The regularizing Levenberg-Marquardt method is, according to Hanke (1997), a *semiconvergent* method. Since the regularizing effect decreases with the number of iterations, the noise error increases, and the iterates may not converge in the \mathbf{x} -space.

The *final iteration criteria* of the Levenberg-Marquardt iterations should be implemented taking into account two conflicting requirements. On one hand we must avoid stopping the iterations too early, with values of χ^2 too far from the minimum. On the other hand, the iterations must be stopped before the noise error becomes too large.

In the literature mentioned above, the consistency criterion is favored as a final iteration criterion, i.e. the iteration is stopped as soon as the χ^2 is only slightly larger than its expected minimal value of 1. For MIPAS this criterion cannot be applied because

we do not have a reliable expectation value for the minimum of the reduced χ^2 as a consequence of the variability of the systematic errors.

Instead, we use dedicated final iteration criteria.

The Level 2 processor originally used for the analysis of the FR measurements terminated the retrieval iterations (see Raspollini et al., 2006) when at least one of the following two conditions was fulfilled:

- (1) The relative difference between the actual χ^2 and its predicted value in the assumption of linear forward model is smaller than a pre-defined threshold t_1 .
- (2) The maximum inter-iteration relative correction to the target profile vector is less than a pre-defined threshold t_2 .

In ML2PP V6 the final iteration criteria have been further improved in order to better handle the conflicting requirements in the case of the ill-conditioned retrievals encountered with OR observations. In particular, in ML2PP V6 the condition (1) on the relative difference between χ^2 and linear χ^2 , being a necessary, but not sufficient, condition to guarantee that a local minimum has been reached, is checked only if the actual χ^2 is less than a pre-defined threshold t_5 , while two other conditions have been added, the fulfillment of one of the four being sufficient to stop the retrieval. The two additional conditions are:

- (3) The relative inter-iteration change of χ^2 is less than a threshold t_3 . This condition is checked only if the actual χ^2 is less than the threshold t_5 .
- (4) The n -dimensional state vector \mathbf{x}_i at the current iteration (i) is compatible with the state vector \mathbf{x}_{i-1} at the previous iteration, within a fraction t_4 of its error bars represented by the Covariance Matrix (CM) \mathbf{S}_i (see Eq. 7).

$$\sqrt{\frac{(\mathbf{x}_i - \mathbf{x}_{i-1})^T \mathbf{S}_i^{-1} (\mathbf{x}_i - \mathbf{x}_{i-1})}{n}} < t_4. \quad (5)$$

Title Page

Abstract

Introduction

Conclusions

References

Tables

Figures

⏪

⏩

◀

▶

Back

Close

Full Screen / Esc

Printer-friendly Version

Interactive Discussion



Ten years of MIPAS

P. Raspollini et al.

Title Page

Abstract

Introduction

Conclusions

References

Tables

Figures

◀

▶

◀

▶

Back

Close

Full Screen / Esc

Printer-friendly Version

Interactive Discussion



The two new added final iteration criteria allow to reduce, on average, the number of iterations by 18 %, while the resulting average χ^2 does not increase. The average number of iterations for pT retrieval is about 4, while it is on average about 3–3.5 for the other retrievals with the exception of NO₂, for which the number of iterations is generally 1 or 2.

Both the chosen thresholds and the fact that the iteration is stopped when one of the final iteration criteria is fulfilled ensure that iterations not achieving a significative reduction of the χ^2 are avoided. Because of the ill-conditioning, failing to stop the iterations may produce an unwanted increase of the noise error in the solution, and may result in oscillating profiles. On the other hand, slightly oscillating profiles due to ill-conditioning guarantees that a weak constraint has been used and are therefore tolerable, also considering that the adaptive a posteriori regularization will reduce these oscillations (see Sect. 3.3).

3.2 Diagnostics of the Levenberg-Marquardt solution

In ill-conditioned retrievals the Levenberg-Marquardt solution depends, to some degree, on both the initial guess of the state vector and the pathway followed by the iterative minimization procedure. The same dependence exists also for the CM and the Averaging Kernels (AKs, for their definition see Sect. 4.2) of the Levenberg-Marquardt solution.

For a proper calculation of the CM and AKs of the Levenberg-Marquardt solution, ML2PP V.6 uses an algorithm (Ceccherini and Ridolfi, 2010) in which all the retrieval iterations and the Levenberg-Marquardt damping are rigorously taken into account. This is particularly important in the retrieval of OR measurements, since, due to the ill-conditioning of the problem, the Levenberg-Marquardt parameter can be significantly different from zero.

To summarize the equations used, let i be the iteration count and c its value at convergence. For $i = 0, \dots, c$, we define the sequence of gain matrices:

$$(\mathbf{T}_i)_{jk} \equiv \frac{\partial(\mathbf{x}_i)_j}{\partial \mathbf{y}_k}. \quad (6)$$

With this definition, the CM \mathbf{S}_c and the AK \mathbf{A}_c of the Levenberg-Marquardt solution \mathbf{x}_c are given by:

$$\mathbf{S}_c = \mathbf{T}_c \mathbf{S}_y \mathbf{T}_c^T \quad (7)$$

$$\mathbf{A}_c = \mathbf{T}_c \mathbf{K}_c. \quad (8)$$

Matrices \mathbf{T}_i can be obtained by deriving the Levenberg-Marquardt iterative formula (Eq. 4). Considering that the initial guess \mathbf{x}_0 does not depend on the observations \mathbf{y} , we obtain the following recursive expression:

$$\begin{cases} \mathbf{T}_0 = \mathbf{0} \\ \mathbf{T}_{i+1} = \left(\mathbf{K}_i^T \mathbf{S}_y^{-1} \mathbf{K}_i + \alpha_i \mathbf{D}_i \right)^{-1} \mathbf{K}_i^T \mathbf{S}_y^{-1} + \left(\mathbf{I} - \left(\mathbf{K}_i^T \mathbf{S}_y^{-1} \mathbf{K}_i + \alpha_i \mathbf{D}_i \right)^{-1} \mathbf{K}_i^T \mathbf{S}_y^{-1} \mathbf{K}_i \right) \mathbf{T}_i. \end{cases} \quad (9)$$

It can be easily shown that in well-conditioned retrievals reaching the exact numerical convergence the CM and the AK calculated with Eqs. (7), (8) and (9) coincide with those calculated assuming the last iteration as a GN iteration ($\alpha_c = 0$). On the other hand, in ill-conditioned retrievals and/or in retrievals stopped with a physically meaningful final iteration criterion, the Levenberg-Marquardt solution and its diagnostic tools deviate from those predicted by the GN formulas. Additional tests and discussions on this algorithm can be found in Ceccherini and Ridolfi (2010). The use of this procedure ensures that in ML2PP V6 both CM and AK matrices are properly computed even when the Levenberg-Marquardt procedure terminates with a Levenberg-Marquardt parameter significantly different from zero.

Title Page

Abstract

Introduction

Conclusions

References

Tables

Figures

◀

▶

◀

▶

Back

Close

Full Screen / Esc

Printer-friendly Version

Interactive Discussion



3.3 A posteriori regularization

As noted in Sect. 3.1, the profiles retrieved using only the Levenberg-Marquardt regularization often exhibit unphysical oscillations. In the Level 2 ESA processor ML2PP V6 these oscillations are damped with a Tikhonov (Tikhonov, 1963) regularization scheme applied, a posteriori, to the Levenberg-Marquardt solution. The expression for the a posteriori regularized solution is:

$$\mathbf{x} = \left(\mathbf{S}_c^{-1} + \lambda \mathbf{R} \right)^{-1} \left(\mathbf{S}_c^{-1} \mathbf{x}_c + \lambda \mathbf{R} \mathbf{x}_a \right) \quad (10)$$

The regularization matrix \mathbf{R} is obtained using the first derivative operator, and \mathbf{x}_a is an a priori profile, which, in our case, is the null vector. This type of regularization is also used by the MIPAS IMK scientific processor von Clarmann et al. (2003b) and von Clarmann et al. (2009b), but contrary to their approach, where the regularization is performed during the iterations and the same regularization strength λ is used for all profiles, the ESA processor performs the a posteriori regularization and determines, for each profile, the optimal regularization strength λ on the basis of the so called *error consistency* (EC) method, first introduced in Ceccherini (2005). This method selects the scalar λ on the basis of the requirement that the regularized and un-regularized profiles should be compatible within the random error of the regularized profile, adapting its strength on the basis of the measurement error. This criterion leads to an analytical formula for the calculation of the regularization parameter λ :

$$\lambda = \sqrt{\frac{n}{(\mathbf{x}_a - \mathbf{x}_c)^T \mathbf{R} \mathbf{S}_c \mathbf{R} (\mathbf{x}_a - \mathbf{x}_c)}}, \quad (11)$$

where \mathbf{S}_c is the CM of the profile retrieved with the regularizing Levenberg-Marquardt method (Eq. 7).

As shown in Ceccherini (2005), this regularization parameter provides a significant but rather weak regularization. The existence of an analytical expression makes the

Title Page

Abstract

Introduction

Conclusions

References

Tables

Figures

◀

▶

◀

▶

Back

Close

Full Screen / Esc

Printer-friendly Version

Interactive Discussion



Ten years of MIPAS

P. Raspollini et al.

Title Page

Abstract

Introduction

Conclusions

References

Tables

Figures

◀

▶

◀

▶

Back

Close

Full Screen / Esc

Printer-friendly Version

Interactive Discussion



EC method particularly suitable for implementation in operational retrievals, where the regularization is applied, without direct user supervision, to large sets of profiles with variable noise errors. Figure 1 represents the time evolution of the regularization strength for the ozone retrieval from January 2007 to December 2008 for different latitude bands. The regularization strength presents significant latitudinal and seasonal behaviour, that, according to Eq. (10), is anti-correlated with the retrieval error of the profile obtained with the regularizing Levenberg-Marquardt method.

The possibility of adapting the regularization strength to each observation makes the bias introduced by the regularization always comparable with the random error.

After the a posteriori regularization the CM and AK matrices, computed in Eqs. (7) and (8), are updated according to:

$$\mathbf{S} = \left(\mathbf{S}_c^{-1} + \lambda \mathbf{R} \right)^{-1} \mathbf{S}_c^{-1} \left(\mathbf{S}_c^{-1} + \lambda \mathbf{R} \right)^{-1} \quad (12)$$

$$\mathbf{A} = \left(\mathbf{S}_c^{-1} + \lambda \mathbf{R} \right)^{-1} \mathbf{S}_c^{-1} \mathbf{A}_c. \quad (13)$$

The performance of the EC method on MIPAS retrievals was extensively studied in terms of achieved vertical resolution, noise error, and effectiveness in damping oscillations. The results of these investigations are illustrated in Ceccherini et al. (2007a). The choice of applying the regularization after convergence of the Levenberg-Marquardt iterations rather than using the Tikhonov constraint during the iterations was motivated by the fact that in this way we obtain a slightly shorter computing time and the convergence point is affected by a weaker constraint, being the convergence determined without the Tikhonov regularization.

Since the strength of the regularization is driven by a single scalar parameter λ independent of altitude, the EC method is not suitable to regularize the water vapor profile for which the VMR and its absolute retrieval error change by two orders of magnitude across the MIPAS retrieval range (6–70 km). An attempt was made to fix this problem by

Ten years of MIPAS

P. Raspollini et al.

Title Page

Abstract

Introduction

Conclusions

References

Tables

Figures

◀

▶

◀

▶

Back

Close

Full Screen / Esc

Printer-friendly Version

Interactive Discussion



applying the regularization to the logarithm of the water VMR profile, that is equivalent to considering the relative error instead of the absolute one. However, this approach fails when, because of the retrieval errors, a negative value of the water vapor VMR is retrieved. The constraining of the negative retrieved values to 10^{-10} parts per million per volume (ppmv), as described in Sect. 3.6.1, did not help, because for this small value the approximation of the linear error propagation from the profile to the logarithm of the profile fails. In ML2PP V.6 this problem with water vapor VMR regularization is temporarily avoided by disabling the a posteriori regularization in water vapor retrievals. In the future ESA processor releases this problem will be tackled with a more sophisticated, self-adapting and altitude-dependent regularization scheme first proposed in Ridolfi and Sgheri (2009) and subsequently optimized for the near real time retrieval processors in Ridolfi and Sgheri (2011).

3.4 Upgrades in the auxiliary data

In addition to the changes in the algorithm, the analysis of the OR measurements required also new auxiliary data. The main change was made in the MW database, i.e. the database of the spectral intervals selected for the retrieval containing the best information on the target species and being less affected by systematic errors. The MW selection is based on the minimization of the total error, including both random and systematic errors (see Sect. 4.1). The change of the spectral resolution modifies the contribution of each of these errors and leads to a different optimized selection of MWs in the two phases of the mission. Furthermore, the MWs for the analysis of the OR measurements were selected using some modified estimation of these errors, according to the improved knowledge on some MIPAS instrument errors as described in Sect. 4.1.

Tables 2, 3 and 4 list the MWs selected for each species for the analysis of FR and OR measurements. The MWs used for the analysis of the FR measurements are the same as described in Raspollini et al. (2006). The spectral intervals analyzed in the OR measurements are 3–4 times, depending on the different species, wider than those of

the old operation mode, even if, because of the reduced spectral resolution, the number of measured spectral points is only 1.2–1.6 times greater. Some points of these MWs are masked (i.e. are not used in the retrieval), and the masks are different at different altitudes. In general the two sets of MWs have only a small number of spectral points in common.

The use of two separate set of MWs, further than the change in the measurement scenario, represents a discontinuity between the two phases of the mission, whose impact on the retrieval performances is investigated in terms of random and systematic error and spatial resolution in the subsequent sections, while the possible presence of bias between the two phases of the mission due to the different systematic errors affecting the two sets of MWs will be investigated in a subsequent companion paper.

Further changes in the auxiliary data involve the MIPAS dedicated spectroscopic database. ML2PP V6 uses V3.2 of the spectroscopic database. With respect to V3.1 described in Raspollini et al. (2006), V3.2 includes updates in NH_3 , OCS , NO , H_2O_2 , HNO_3 , as well as updated pressure broadening (and its temperature dependence) of H_2O at 948.26288 cm^{-1} .

The used climatological profile dataset (IG2 V4.1) is described in Remedios et al. (2007).

3.5 New products

Starting with ML2PP V6.0, four additional target species, namely CFC-11, ClONO_2 , N_2O_5 and CFC-12, have been operationally processed. These species are retrieved individually in this order after the retrieval of the original target species. With the addition of these new target species not only more variables of the atmospheric chemistry are determined providing a more comprehensive overview of the overall atmospheric composition, but also a better understanding of the observed spectrum is attained, since the use of the retrieved profiles of these species, instead of the IG2, as assumed profiles in the retrieval of the other target species reduces the errors due to the mutual interference of the species.

Ten years of MIPAS

P. Raspollini et al.

Title Page

Abstract

Introduction

Conclusions

References

Tables

Figures

⏪

⏩

◀

▶

Back

Close

Full Screen / Esc

Printer-friendly Version

Interactive Discussion



Ten years of MIPAS

P. Raspollini et al.

Title Page	
Abstract	Introduction
Conclusions	References
Tables	Figures
◀	▶
◀	▶
Back	Close
Full Screen / Esc	
Printer-friendly Version	
Interactive Discussion	



The analysis performed by the other MIPAS algorithms on these species, for either a part of the mission or the total mission, are reported in Dudhia (2008); Höpfner et al. (2004); Kellmann et al. (2012) and Mengistu Tsidu et al. (2004). CFC species are crucial for ozone depletion in the upper stratosphere and in the polar regions due to the chlorine released by their photolytic decomposition in the stratosphere; furthermore, since CFCs and most of their replacements are strong infrared absorbers, they contribute significantly to the anthropogenic greenhouse effect. Continuous measurements of these long-lived trace gases are useful to validate transport in atmospheric models. The study of the trends of these species during the whole MIPAS mission is important in order to verify the decrease of CFC-11 and CFC-12 in the atmosphere due to the Montreal and successive protocols (Kellmann et al., 2012). Concerning CIONO₂ and N₂O₅ molecules, they are important reservoir species for nitrogen and chlorine in the stratosphere and play, therefore, an important role in the stratospheric ozone chemistry.

For some of the new species (especially N₂O₅) the observed features are characterized by broad unresolved bands that are strongly correlated with the fitted atmospheric continuum. Furthermore, the MWs that are used for the retrieval are located in a small spectral region, where the continuum can be assumed approximately constant. In this case, the approach originally used of retrieving a continuum profile for each microwindow has been changed with the possibility of fitting, for selectable species, a single continuum profile common for all the MWs, as also described in Mengistu Tsidu et al. (2004). This new approach is used for the retrieval of N₂O₅.

3.6 Other minor changes and caveats

For completeness in the following subsections we describe another minor change implemented in ML2PP V6 and a caveat.

3.6.1 Negative VMRs

In the previous versions of the ESA Level 2 processor the VMR profiles were constrained to be greater than 10^{-10} ppmv after each iteration for all species. This constraint was introduced in order to avoid possible overflow errors in the radiative transfer calculation. However, when the random errors are comparable with the retrieved values of VMR it prevents the occurrence of negative values in the retrieval. This operation is physically justified but it may introduce a positive bias in the statistical distribution of the results. Biases emerged during the comparison of MIPAS FR measurements with correlative measurements, for example for CH₄ and N₂O at high altitudes: from the comparison of a sample of 131 coincident profiles of CH₄ in the 70° N–80° N latitude band of MIPAS and ACE-FTS measurements a positive bias (100 · (MIPAS-ACE)/MIPAS) up to 80 % ± 8 % was estimated above 60 km for MIPAS (De Mazière et al., 2008). A similar positive bias is found in MIPAS ESA N₂O profiles with respect to ACE-FTS (Strong et al., 2008). A method for estimating the bias due to the positive constraint of the profiles is proposed in Funke et al. (2008).

In order to avoid the positive bias in the statistical distribution of the results without reducing the robustness of the code, in ML2PP V6 the constraint to the VMR to be not smaller than 10^{-10} ppmv has been maintained during the iterations but it is now removed at the last iteration.

The need to allow for negative values of the VMRs was identified also for other codes and other species (von Clarmann et al., 2006).

3.6.2 Altitude bias

The MIPAS ESA Level 2 processor retrieves the pressure at the tangent levels and the temperature corresponding to this pressure. The spacing between two consecutive tangent altitudes is determined from these quantities using the hydrostatic equilibrium law constrained by the engineering information on the distance between two contiguous tangent altitudes. The location of the altitude grid is determined using the lowest

Title Page

Abstract

Introduction

Conclusions

References

Tables

Figures

⏪

⏩

◀

▶

Back

Close

Full Screen / Esc

Printer-friendly Version

Interactive Discussion



tangent altitude, assumed to be equal to the corresponding engineering value, as a reference point. In this way the tangent altitudes retrieved by the Level 2 processor are affected by a constant bias equal to the error of the engineering measurement at the lowest altitude, that may be as large as 1.5 km.

No correction of this bias is made in ML2PP V6, but the potential bias in the lowest retrieved tangent altitude has been estimated with a method that takes into account the height and pressure relation provided by the ECMWF atmospheric model high resolution 10-day forecast data (ECMWF, 2009). By minimizing the function given by the sum of the square differences between each of three selected retrieved tangent altitudes (that are function of the lowest engineering tangent altitude) and the corresponding ECMWF value determined by interpolating the ECMWF altitude–pressure grid at the MIPAS pressure levels, the found correction applied to the lowest retrieved tangent altitude (computed on four days of measurements in the four seasons) has a mean value of 80 m and a standard deviation of 310 m.

This correction is planned to be included in future versions of MIPAS ESA processor. Whenever possible the recommendation is to use the tangent pressure as the independent variable to represent retrieved VMR profiles. The use of ECMWF information, although with different mathematics, is made also in the IMK processor (von Clarmann et al., 2003b).

4 Characterization of the Level 2 products in the two phases of the mission

In this section the quality of the products obtained by ML2PP V6 in the two phases of the mission is compared in terms of precision, accuracy and spatial resolution (both vertical and horizontal). It has to be highlighted that, even if the a posteriori regularization is not necessary in the analysis of the FR measurements, it was decided to use it in order to have more consistent products on the whole MIPAS mission, also considering that the a posteriori regularization does not change the convergence point and is completely reversible.

Ten years of MIPAS

P. Raspollini et al.

Title Page

Abstract

Introduction

Conclusions

References

Tables

Figures



Back

Close

Full Screen / Esc

Printer-friendly Version

Interactive Discussion



4.1 Accuracy and precision

The accuracy of the retrieved profiles is described in terms of the noise error and of the forward model errors.

The noise error is the mapping of the measurement noise in the retrieved profile and its CM \mathbf{S} is computed using Eq. (12). The CM of the un-regularized retrieval \mathbf{S}_c that appears in Eq. (12) is given by Eq. (7). The CM of the observations \mathbf{S}_y that appears in Eq. (7) is calculated using the radiometric measurement noise (expressed in terms of Noise Equivalent Spectral Radiance NESR) provided by the Level 1 processor, and takes into account the correlation between spectral points due to the apodization process (Raspollini et al., 2006; Ceccherini et al., 2007b). The noise error depends on the sensitivity of the measurements to the target parameters, in turn driven by the temperature profile. Given the large seasonal variability of the temperature profile, especially at latitudes far from the tropics, a large seasonal variability is also observed in the noise error. An example is shown for ozone in Fig. 2, where both the absolute (left plot) and percent (right plot) noise error profiles, averaged in the latitude band 65°S – 90°S , are reported for the four seasons of year 2008. The largest absolute errors are in general observed in the austral winter where the temperatures are coldest. A large relative error is present in the austral spring at the altitudes where ozone depletion occurs, but this is an effect of the significant decrease of ozone rather than a large change in the error.

The forward model errors are given by the propagation in the retrieved profiles of the uncertainties present in instrument and atmospheric model parameters and of the approximations in the forward model itself (Dudhia, 2002).

The uncertainties in the instrument and the atmospheric model parameters that have been used to estimate the systematic errors of the retrieved profile are the same as used for the FR measurements and have already been reported in Raspollini et al. (2006): with respect to these values the only changes involve the uncertainty in the width of the apodized instrument line shape, where a value of 0.2 % instead of 2 % has

Title Page

Abstract

Introduction

Conclusions

References

Tables

Figures

◀

▶

◀

▶

Back

Close

Full Screen / Esc

Printer-friendly Version

Interactive Discussion



been assumed for the data, and the radiance calibration errors in MIPAS bands C and D (Fischer et al., 2008), for which the estimated error was changed from 2% to 1%, based on a more accurate estimate of the errors made in the instrument line shape model and in the calibration.

Among the forward model errors, some are random, like the propagation of temperature and pressure noise errors on the VMR profiles (pT propagation error, Raspollini and Ridolfi, 2000), some are systematic, such as the spectroscopic errors. Others have a value and a variability that may depend on either the time or spatial scale of the profiles that are considered for the statistical analysis.

Here we estimate the single scan random error, for VMR retrievals, by quadratically summing the average single scan noise error and the average single scan error in VMR profiles due to the pT propagation error. The latter is computed by averaging, for a selected set of orbits, the diagonal elements of the CM of the pT propagation error relative to each VMR retrieval, that is contained in the ESA Level 2 output files.

The contribution to the random error coming from the pT propagation error profile is generally not negligible with respect to the noise error. Figure 3 provides an example for O_3 of the different contributions to the random error for both FR and OR measurements. In this case the contribution to the random error at low altitudes mainly comes from the pT propagation error, while at high altitudes the noise error and the pT propagation error contribute in equal manner to the random error.

The systematic error contribution to the total error budget of the retrieved profiles has been computed as the square root of the quadratic sum of all forward model errors, except for pT propagation error.

Figure 4 shows the percent random and systematic single scan error profiles of the O_3 VMR, computed taking into account the contributions described above, for both FR (left plot) and OR (right plot) measurements. Corresponding figures for pressure and temperature, as well as for the VMR of the other species, are reported in the supplementary material to the online publication. The random error profiles, obtained by averaging the noise error on either one season or one year of measurements and

Ten years of MIPAS

P. Raspollini et al.

[Title Page](#)[Abstract](#)[Introduction](#)[Conclusions](#)[References](#)[Tables](#)[Figures](#)[⏪](#)[⏩](#)[◀](#)[▶](#)[Back](#)[Close](#)[Full Screen / Esc](#)[Printer-friendly Version](#)[Interactive Discussion](#)

Ten years of MIPAS

P. Raspollini et al.

Title Page

Abstract

Introduction

Conclusions

References

Tables

Figures

◀

▶

◀

▶

Back

Close

Full Screen / Esc

Printer-friendly Version

Interactive Discussion



including the contribution of the pT error propagation error, are shown for five reference atmospheres, i.e. middle latitude day-time (day), mid-latitude night-time (ngt), polar summer day-time (sum), polar winter night-time (win), equatorial day-time (equ). The estimate of the systematic error profiles is shown for the same reference atmospheres, which are also used for the MW selection (Remedios et al., 2007). Random errors for the global atmosphere (glw) are obtained by averaging the random error profiles of a year of measurements, systematic errors for the global atmosphere are obtained by a composite of results for the five reference atmospheres, with twice the weight given to results from the polar winter case, to ensure that this atmosphere, that is significantly different from the other four, is properly represented. The random error profiles change significantly for different atmospheric conditions, the polar winter atmosphere being characterized by the largest errors. The increase of the random error in polar winter conditions is particularly evident for CH₄ (see Fig. 5), since it reaches 40 % for FR measurements and 15 % for OR measurements around 30 km in South Pole winter conditions, while for the other latitudes and other conditions the random error does not exceed 10 % below 55 km. A similar increase in the random error in polar winter conditions is visible also for other species, especially H₂O, N₂O, NO₂ and CFC-12 (not shown here, but reported in the Supplement).

Also the systematic errors show a dependence on the atmospheric conditions.

Figures 6 and 7 show, for FR and OR measurements respectively, the global yearly mean of the percent single scan random error profile for all analyzed species (top panels) and the corresponding single scan systematic error profile of the global atmosphere (bottom panels). The random error varies between 5 and 20 %, apart, for some species, near the boundaries of the corresponding retrieval range. Similar random errors are obtained for all species in the two phases of the mission, thanks to the selection of a larger number of spectral points in the retrievals from OR measurements.

Also the systematic errors vary between 5 and 20 %, although for some species larger errors are obtained near the boundaries of the retrieval range. The systematic

errors of FR and OR measurements are on the whole comparable, even though slightly larger errors are usually obtained for OR measurements.

We should also mention that, because we now apply a regularization, the random errors of the FR measurements reported here are smaller than those obtained in the previous processing (see Raspollini et al., 2006). Accordingly, the vertical resolution of FR measurements is here degraded.

4.2 Vertical resolution

Further than the CM, the AK matrix, that is the retrieval response to variations of the atmospheric status, is needed to characterize the retrieved profile. ML2PP V6 computes the AK matrix for each retrieved profile, and this is contained in the Level 2 output files. Figures 8 and 9 show all the rows of the ozone AK matrix for two representative scans from FR measurements and OR measurements respectively. In the figures it is also indicated the number of degrees of freedom for the considered scan, given by the trace of the AK matrix. Typical values for ozone are, in absence of clouds, 14 for FR measurements and 21 for OR measurements. Corresponding figures with the AKs of the other species are reported in the supplementary material to the online publication. For altitudes lower than 30 km the peaks of FR AKs are closer to 1 than those of OR AKs, indicating that for OR measurements a larger constraint is applied in this altitude range, as expected considering the different ill-conditioning of the retrievals. Nevertheless, the vertical resolution of the profile is significantly better in OR measurements in this altitude range. Indeed, the vertical resolution, further than depending on the constraint of the retrieval and on the IFOV size, is driven by the vertical retrieval grid which is taken equal, for most species, to the measurement grid and is, therefore, finer for OR measurement. The vertical resolution has been estimated as the ratio between the area subtended by the AK and its diagonal value. This quantity, that also in the case of an undersampled distribution is easily calculated, is an approximate estimation of the full width at half maximum (FWHM) of the AK rows, coinciding with it in case of a triangular form of the AK. Figure 10 shows the vertical resolution profile (averaged

Title Page

Abstract

Introduction

Conclusions

References

Tables

Figures

⏪

⏩

◀

▶

Back

Close

Full Screen / Esc

Printer-friendly Version

Interactive Discussion



Ten years of MIPAS

P. Raspollini et al.

[Title Page](#)[Abstract](#)[Introduction](#)[Conclusions](#)[References](#)[Tables](#)[Figures](#)[Back](#)[Close](#)[Full Screen / Esc](#)[Printer-friendly Version](#)[Interactive Discussion](#)

on one orbit) and retrieval grid step for O_3 profile for two representative orbits of FR (green curves) and OR measurements (red curves). These quantities are to be compared with the IFOV of approximately 3 km measured at tangent altitude point. In the OR measurements the use of a finer measurement grid step allows to obtain an improved vertical resolution, which in troposphere and lower stratosphere is often smaller than the IFOV of the instrument.

The same considerations are valid for the profiles of the other species. Figures 11 and 12 show the vertical resolution profiles of the various species respectively for FR and OR measurements. For FR measurements the vertical resolution of all species is between 3 and 5 km in the altitude range 10 to 40 km, and significantly larger above. For OR measurements the vertical resolution varies between 1.5 and 4 km in the altitude range 10 to 40 km for all species except CH_4 , N_2O , CFC-12 and CFC-11. For these four species similar performances are obtained in the two phases of the mission because the retrieval of OR measurements is performed on a grid coarser than the measurement grid below 20 km, and hence the retrieval grids are comparable in the two phases of the mission. In particular, the VMR was retrieved on every two points of the measurement grid for CH_4 in the altitude range 6–29 km, for N_2O in the altitude range 6–21 km, for CFC-11 in the altitude range 6–18 km, for CFC-12 in the altitude range 6–18 km and also for NO_2 in the altitude range 46–71 km.

The water vapor profile is characterized in the two phases of the mission by the best vertical resolution of all the other species, because no regularization is applied (see Sect. 3.3).

4.3 Horizontal resolution

The operational retrieval assumes local horizontal homogeneity of the atmosphere, i.e. the vertical profiles are retrieved assuming, at each limb scan, the atmosphere as made of homogeneous spherical shells (Raspollini et al., 2006; Ridolfi et al., 2000).

The state of the real atmosphere, however, changes as a function of the polar coordinate in the limb-scan plane, i.e. the spherical shells used for the discretization of

Ten years of MIPAS

P. Raspollini et al.

Title Page

Abstract

Introduction

Conclusions

References

Tables

Figures

◀

▶

◀

▶

Back

Close

Full Screen / Esc

Printer-friendly Version

Interactive Discussion



the radiative transfer are not homogeneous. Besides being responsible for an error in the retrieved profiles (Kiefer et al., 2010), this inhomogeneity affects the horizontal resolution of the limb measurements and causes a so-called *smoothing error* (Rodgers, 2000) in the horizontal domain. This horizontal smoothing must be considered in quantitative applications, e.g. in comparisons of measurements to modeled data and in the data assimilation (e.g. Lahoz et al., 2007; Ide et al., 1997), whenever the model grid is significantly finer than the horizontal resolution of the measurement. Similar considerations apply to the comparison with measurements of different horizontal resolution (e.g. Ridolfi et al., 2007).

A set of horizontal averaging kernels (HAKs), characterizing the horizontal smoothing of MIPAS measurements, has been computed as described in von Clarmann et al. (2009). This set includes HAKs for the MIPAS IG2 atmospheres (Version 4.1, Remedios et al., 2007), i.e. six latitude bands and four seasons for each year and for both FR and OR measurements. The HAKs were calculated assuming the measurement characteristics corresponding to the nominal measurement modes of both the FR and the OR scenarios (see Table 1).

For all the considered cases, the HAKs have a single maximum, therefore it is meaningful to quantify their horizontal spread with the FWHM. We compute this quantity using the same method used for the estimation of the vertical resolution (see Sect. 4.2).

The FWHM of the HAKs shows quite small variations as a function of both latitude and season, therefore here we show only the FWHM relating to a single month (July) and the average over the six latitude bands. Figures 13 (for FR) and 14 (for OR) show the FWHM of HAKs as a function of altitude. Each plot contains lines related to temperature and to the VMR of six MIPAS species, as indicated in the plot's key.

In general, below about 40 km the FWHM of the FR HAKs is between 200 and 300 km for all MIPAS products; and those corresponding to OR are slightly smaller. Above 40 km, the FR HAKs is between 300 and 600 km, while those of OR are significantly better, still below 300 km except at the uppermost altitude.

Ten years of MIPAS

P. Raspollini et al.

Title Page	
Abstract	Introduction
Conclusions	References
Tables	Figures
⏪	⏩
◀	▶
Back	Close
Full Screen / Esc	
Printer-friendly Version	
Interactive Discussion	



Since the horizontal sampling step of MIPAS limb scans is about 510 km for FR measurements and about 410 km for OR measurements (see Table 1), in both cases the atmosphere turns out to be horizontally undersampled at most altitudes. Because of this undersampling, the horizontal resolution of MIPAS measurements in the nominal mode is better quantified by the horizontal sampling (see Table 1) rather than by the FWHM of the HAKs.

Another interesting feature of the MIPAS HAKs is the horizontal shift (or displacement) existing between the geolocation of the tangent point and the point where most of the information comes from. While the retrieved profiles are assumed as geolocated at the tangent points of the limb scan from which they are retrieved, most of the information contributing to the retrieved values comes from air-masses shifted towards the satellite with respect to the tangent points. This shift is positively correlated to the opacity of the atmosphere in the spectral region used for the retrieval, and hence it is important in case of large opacity of the MWs used in the retrieval and in presence of significant horizontal variability of the atmosphere. In these conditions the shift may reach, for temperature, the value of 150–200 km. Further details on this shift can be found in von Clarmann et al. (2009a); Carlotti and Magnani (2009); Carlotti et al. (2012).

5 Conclusions

With almost ten years of measurements, MIPAS products constitute an extended and valuable dataset, important for studies of trends, climatology, and in general for the study of the physics and chemistry of the atmosphere. MIPAS mission is divided in two phases, the so-called FR phase, in the first two years of operation (from July 2002 to March 2004) when the instrument acquired, nearly continuously, measurements at full spectral resolution (sampled at 0.025 cm^{-1}), and the so-called OR phase (from January 2005 to April 2012), in which the instrument operated with a reduced spectral resolution

(0.0625 cm^{-1}), but improved spatial resolution, that is with more frequent observations both in the vertical (limb) domain and in the horizontal domain (along the orbit).

The ESA processor has been specifically designed for operating in near real time, and hence for working automatically in different atmospheric conditions, aimed to use the minimum amount of a priori information that may introduce a bias in the profiles.

The algorithm, originally designed for the scenario of the FR measurements, required some modifications for the analysis of the OR measurements, to fully exploit the dense vertical sampling of the OR measurements with a proper handling of the ill-conditioned problem coming from the use of a retrieval grid finer than the IFOV of the instrument.

Looking for self-adapting constraints, the ill-conditioned problem of the OR measurements is handled with the regularizing Levenberg-Marquardt approach during the iterations and an a posteriori regularization with a self-adapting constraint dependent on the random error of each profile. An accurate method specifically designed for the regularizing Levenberg-Marquardt approach is used for the computation of the diagnostic quantities (CM and AK). The innovative solutions implemented in ESA processor and discussed in the paper can be useful for the analysis of future limb-sounding missions.

An overview of the performance of the ESA processor ML2PP V6, used for the re-analysis of the entire MIPAS mission, is presented for all the operational species, i.e. H_2O , O_3 , HNO_3 , CH_4 , N_2O , NO_2 , CFC-11, CFC-12, N_2O_5 , ClONO_2 , further than temperature, and a comparison between the two phases has been carried out. The performed analysis shows that the random and systematic error performances, thanks to the redundant information on the target species present in MIPAS spectra and the consequent use of dedicated MWs in the two phases (larger spectral intervals being used for OR measurements), are generally comparable in the two phases. The single scan random error varies between 5 and 20 % for most species and most altitudes. For the weakest species, near the boundaries of the retrieval range, the percent random error may be significantly larger than these values. The systematic errors are generally larger than the random errors, especially for the OR measurements.

Ten years of MIPAS

P. Raspollini et al.

Title Page

Abstract

Introduction

Conclusions

References

Tables

Figures

⏪

⏩

◀

▶

Back

Close

Full Screen / Esc

Printer-friendly Version

Interactive Discussion



Ten years of MIPAS

P. Raspollini et al.

Title Page

Abstract Introduction

Conclusions References

Tables Figures

⏪ ⏩

◀ ▶

Back Close

Full Screen / Esc

Printer-friendly Version

Interactive Discussion



The profiles from OR measurements are characterized by an improved horizontal sampling (about 510 km for FR measurements, about 410 km for OR measurements) and an improved vertical resolution (varying, in the altitude range 10–40 km, between 3 and 5 km for FR measurements, between 1.5 and 4 km for OR measurements) for most species.

In general, for the species we have analyzed, the OR measurements provide higher quality products than FR measurements.

The random errors, as well as the systematic errors, are dependent on the latitude and season. This justifies the efforts spent in including self-adapting regularization schemes in the retrieval algorithm. The minimal use of external constraints, that are prone to introduce biases in the solution, makes ESA processor products suitable for the climatological studies.

The use of different MWs in the two phases and in general the change in the measurement scenario impose some caution when using the full ten year dataset to extract trends. This issue will be further investigated in a subsequent companion paper.

Supplementary material related to this article is available online at:
<http://www.atmos-meas-tech-discuss.net/6/461/2013/amtd-6-461-2013-supplement.pdf>.

Acknowledgements. This work has been performed under the ESA Study “Support to MIPAS Level 2 product validation”, contract ESA-ESRIN no. 21719/08/I-OL. The authors are grateful to the Astrium team that developed the industrial prototype ML2PP using the ORM code as reference, to Thorsten Fehr and Rolf von Kulhmann for the coordination of the MIPAS Quality Working Group activities and to Michael Kiefer for the work done within the MIPAS Quality Working Group.

References

- Bermejo-Pantaleón, D., Funke, B., López-Puertas, M., García-Comas, M., Stiller, G. P., von Clarmann, T., Linden, A., Grabowski, U., Höpfner, M., Kiefer, M., Glatthor, N., Kellmann, S., and Lu, G.: Global observations of thermospheric temperature and nitric oxide from MIPAS spectra at 5.3 μm , *J. Geophys. Res.*, 116, A10313, doi:10.1029/2011JA016752, 2011 469
- 5 Böckmann, C., Kammanee, A., and Brauns, S.: Logarithmic convergence rate of Levenberg-Marquardt method with application to an inverse potential problem, *J. Inverse and Ill-Posed P.*, 19, 345–367, doi:10.1515/JIIP.2011.034, 2011. 473
- Carlotti, M.: Global-fit approach to the analysis of limb-scanning atmospheric measurements, *Appl. Optics*, 27, 3250–3254, 1988. 471
- 10 Carlotti, M. and Magnani, L.: Two-dimensional sensitivity analysis of MIPAS observations, *Opt. Expr.*, 17, 5340–5357, 2009. 490
- Carlotti, M., Brizzi, G., Papandrea, E., Prevedelli, M., Ridolfi, M., Dinelli, B. M., and Magnani, L.: GMTR: two-dimensional geofit multitarget retrieval model for Michelson Interferometer for Passive Atmospheric Sounding/environmental satellite observations, *Appl. Optics*, 45, 716–727, 2006. 465
- 15 Carlotti, M., Arnone, E., Castelli, E., Dinelli, B. M., and Papandrea, E.: Position error in profiles retrieved from MIPAS observations with a 1-D algorithm, *Atmos. Meas. Tech. Discuss.*, 5, 6519–6551, doi:10.5194/amtd-5-6519-2012, 2012. 490
- 20 Ceccherini, S.: Analytical determination of the regularization parameter in the retrieval of atmospheric vertical profiles, *Opt. Lett.*, 30, 2554–2556, 2005. 477
- Ceccherini, S. and Ridolfi, M.: Technical Note: Variance-covariance matrix and averaging kernels for the Levenberg-Marquardt solution of the retrieval of atmospheric vertical profiles, *Atmos. Chem. Phys.*, 10, 3131–3139, doi:10.5194/acp-10-3131-2010, 2010. 475, 476
- 25 Ceccherini, S., Belotti, C., Carli, B., Raspollini, P., and Ridolfi, M.: Technical Note: Regularization performances with the error consistency method in the case of retrieved atmospheric profiles, *Atmos. Chem. Phys.*, 7, 1435–1440, doi:10.5194/acp-7-1435-2007, 2007a. 478
- Ceccherini, S., Belotti, C., Carli, B., and Raspollini, P.: Use of apodization in quantitative spectroscopy, *Opt. Lett.*, 32, 1329–1331, 2007b. 484
- 30 Chauhan, S., Höpfner, M., Stiller, G. P., von Clarmann, T., Funke, B., Glatthor, N., Grabowski, U., Linden, A., Kellmann, S., Milz, M., Steck, T., Fischer, H., Froidevaux, L., Lambert, A., Santee, M. L., Schwartz, M., Read, W. G., and Livesey, N. J.: MIPAS reduced spectral res-

AMTD

6, 461–518, 2013

Ten years of MIPAS

P. Raspollini et al.

Title Page

Abstract

Introduction

Conclusions

References

Tables

Figures

⏪

⏩

◀

▶

Back

Close

Full Screen / Esc

Printer-friendly Version

Interactive Discussion



Ten years of MIPAS

P. Raspollini et al.

olution UTLS-1 mode measurements of temperature, O₃, HNO₃, N₂O, H₂O and relative humidity over ice: retrievals and comparison to MLS, *Atmos. Meas. Tech.*, 2, 337–353, doi:10.5194/amt-2-337-2009, 2009. 469

5 Cortesi, U., Lambert, J. C., De Clercq, C., Bianchini, G., Blumenstock, T., Bracher, A., Castelli, E., Catoire, V., Chance, K. V., De Mazière, M., Demoulin, P., Godin-Beekmann, S., Jones, N., Jucks, K., Keim, C., Kerzenmacher, T., Kuellmann, H., Kuttippurath, J., Iarlori, M., Liu, G. Y., Liu, Y., McDermid, I. S., Meijer, Y. J., Mencaraglia, F., Mikuteit, S., Oelhaf, H., Piccolo, C., Pirre, M., Raspollini, P., Ravegnani, F., Reburn, W. J., Redaelli, G., Remedios, J. J., Sembhi, H., Smale, D., Steck, T., Taddei, A., Varotsos, C., Vigouroux, C., Waterfall, A., Wetzel, G., and Wood, S.: Geophysical validation of MIPAS-ENVISAT operational ozone data, *Atmos. Chem. Phys.*, 7, 4807–4867, doi:10.5194/acp-7-4807-2007, 2007. 470

10 De Mazière, M., Vigouroux, C., Bernath, P. F., Baron, P., Blumenstock, T., Boone, C., Brogniez, C., Catoire, V., Coffey, M., Duchatelet, P., Griffith, D., Hannigan, J., Kasai, Y., Kramer, I., Jones, N., Mahieu, E., Manney, G. L., Piccolo, C., Randall, C., Robert, C., Senten, C., Strong, K., Taylor, J., Tétard, C., Walker, K. A., and Wood, S.: Validation of ACE-FTS v2.2 methane profiles from the upper troposphere to the lower mesosphere, *Atmos. Chem. Phys.*, 8, 2421–2435, doi:10.5194/acp-8-2421-2008, 2008. 482

15 Dethof, A.: Assimilation of ozone retrievals from the MIPAS instrument on board ENVISAT, ECMWF technical memorandum No. 428, available at: <http://www.ecmwf.int/publications/library/do/references/list/14> (last access: 11 January 2013), 2003. 466

20 Dinelli, B. M., Arnone, E., Brizzi, G., Carlotti, M., Castelli, E., Magnani, L., Papandrea, E., Prevedelli, M., and Ridolfi, M.: The MIPAS2D database of MIPAS/ENVISAT measurements retrieved with a multi-target 2-dimensional tomographic approach, *Atmos. Meas. Tech.*, 3, 355–374, doi:10.5194/amt-3-355-2010, 2010. 465

25 Doicu, A., Schreier, F., and Hess, M.: Iterative regularization methods for atmospheric remote sensing, *J. Quant. Spectrosc. Ra.*, 83, 47–61, 2004. 473

Doicu, A., Trautmann, T., and Schreier, F.: Numerical Regularization for Atmospheric Inverse Problems, Springer, Berlin, 2010. 473

30 Dragani, R.: Monitoring and assimilation of SCIAMACHY, GOMOS and MIPAS retrievals at ECMWF. Annual Report for ESA contract 21519/08/I-OL – CCN No. 1: technical support for global validation of ENVISAT data products, 2012. 466

Dudhia, A., Jay, V. L., and Rodgers, C. D.: Microwindow selection for high-spectral-resolution sounders, *Appl. Optics*, 41, 3665–3673, 2002. 470, 484

Title Page

Abstract

Introduction

Conclusions

References

Tables

Figures

◀

▶

◀

▶

Back

Close

Full Screen / Esc

Printer-friendly Version

Interactive Discussion



Ten years of MIPAS

P. Raspollini et al.

Title Page

Abstract

Introduction

Conclusions

References

Tables

Figures

◀

▶

◀

▶

Back

Close

Full Screen / Esc

Printer-friendly Version

Interactive Discussion



- Dudhia, A.: Reference Forward Model, available at: <http://www.atm.ox.ac.uk/RFM> (last access: 11 January 2013), 2005. 466
- Dudhia, A.: MIPAS-related section of the web-site of the Oxford University, available at: www.atm.ox.ac.uk/group/mipas (last access: 11 January 2013), 2008. 466, 469, 481
- 5 ECMWF: Set I: Atmospheric Model high resolution 10-day forecast (HRES), available at: <http://www.ecmwf.int/products/catalogue/l.html> (last access: 11 January 2013), 2009. 483
- Engl, H. W., Hanke, M., and Neubauer, A.: Regularization of Inverse Problems, Mathematics and Its Applications, Vol. 44, Kluwer Academic Publishers, The Netherlands, 2000. 473
- ESA, ESA news 9 May 2012: available at: http://www.esa.int/esaCP/SEM1SXSWT1H_index_0.html (last access: 11 January 2013), 2012a. 465
- 10 ESA, ML2PP V6 dataset: available at: https://earth.esa.int/web/guest/missions/esa-operational-eo-missions/envisat/news/-/asset_publisher/x9cY/content/mipas-level-2-dataset-processed-with-ml2pp-v6-0-is-available-at-d-pac (last access: 11 January 2013), 2012b. 467
- 15 Fischer, H., Birk, M., Blom, C., Carli, B., Carlotti, M., von Clarmann, T., Delbouille, L., Dudhia, A., Ehhalt, D., Endemann, M., Flaud, J. M., Gessner, R., Kleinert, A., Koopman, R., Langen, J., López-Puertas, M., Mosner, P., Nett, H., Oelhaf, H., Perron, G., Remedios, J., Ridolfi, M., Stiller, G., and Zander, R.: MIPAS: an instrument for atmospheric and climate research, *Atmos. Chem. Phys.*, 8, 2151–2188, doi:10.5194/acp-8-2151-2008, 2008. 464, 466, 485
- 20 Funke, B., López-Puertas, M., Garcia-Comas, M., Stiller, G. P., von Clarmann, T., and Glatthor, N.: Mesospheric N₂O enhancements as observed by MIPAS on Envisat during the polar winters in 2002–2004, *Atmos. Chem. Phys.*, 8, 5787–5800, doi:10.5194/acp-8-5787-2008, 2008. 482
- 25 García-Comas, M., Funke, B., López-Puertas, M., Bermejo-Pantaleón, D., Glatthor, N., von Clarmann, T., Stiller, G., Grabowski, U., Boone, C. D., French, W. J. R., Leblanc, T., López-González, M. J., and Schwartz, M. J.: On the quality of MIPAS kinetic temperature in the middle atmosphere, *Atmos. Chem. Phys.*, 12, 6009–6039, doi:10.5194/acp-12-6009-2012, 2012. 469
- 30 Hanke, M.: A regularizing Levenberg-Marquardt scheme, with applications to inverse ground-water filtration problems, *Inverse Problems*, 13, 79–95, 1997. 471, 473

Ten years of MIPAS

P. Raspollini et al.

[Title Page](#)[Abstract](#)[Introduction](#)[Conclusions](#)[References](#)[Tables](#)[Figures](#)[◀](#)[▶](#)[◀](#)[▶](#)[Back](#)[Close](#)[Full Screen / Esc](#)[Printer-friendly Version](#)[Interactive Discussion](#)

- Hochbruck, M. and Honig, M.: On the convergence of a regularizing Levenberg-Marquardt scheme for nonlinear ill-posed problems, *Numer. Math.*, 115, 71–79, doi:10.1007/s00211-009-0268-9, 2010. 473
- Hoffmann, L., Kaufmann, M., Spang, R., Müller, R., Remedios, J. J., Moore, D. P., Volk, C. M., von Clarmann, T., and Riese, M.: Envisat MIPAS measurements of CFC-11: retrieval, validation, and climatology, *Atmos. Chem. Phys.*, 8, 3671–3688, doi:10.5194/acp-8-3671-2008, 2008. 466
- Höpfner, M. von Clarmann, T., Fischer, H., Glatthor N., Grabowski, U., Kellmann, S., Kiefer, M., Linden, A., Mengistu Tsidu, G., Milz, M., Steck, T., Stiller, G. P., Wang, D.-Y., Funke, B.: First spaceborne observations of antarctic stratospheric ClONO₂ recovery: austral spring 2002, *J. Geophys. Res.*, 109, D11308, doi:10.1029/2004JD004609, 2004. 481
- Ide, K., Courtier, P., Ghil, M., and Lorenc, A. C.: Unified notation for data assimilation: operational, sequential and variational, *J. Meteorol. Soc. Jpn.*, 75, 181–189, 1997. 489
- Jin, Q.: On a regularized Levenberg-Marquardt method for solving nonlinear inverse problems, *Numer. Math.*, 115, 229–259, 2010. 473
- Kellmann, S., von Clarmann, T., Stiller, G. P., Eckert, E., Glatthor, N., Höpfner, M., Kiefer, M., Orphal, J., Funke, B., Grabowski, U., Linden, A., Dutton, G. S., and Elkins, J. W.: Global CFC-11 (CCl₃F) and CFC-12 (CCl₂F₂) measurements with the Michelson Interferometer for Passive Atmospheric Sounding (MIPAS): retrieval, climatologies and trends, *Atmos. Chem. Phys.*, 12, 11857–11875, doi:10.5194/acp-12-11857-2012, 2012. 481
- Kiefer, M., Arnone, E., Dudhia, A., Carlotti, M., Castelli, E., von Clarmann, T., Dinelli, B. M., Kleinert, A., Linden, A., Milz, M., Papandrea, E., and Stiller, G.: Impact of temperature field inhomogeneities on the retrieval of atmospheric species from MIPAS IR limb emission spectra, *Atmos. Meas. Tech.*, 3, 1487–1507, doi:10.5194/amt-3-1487-2010, 2010. 489
- Lahoz, W. A., Errera, Q., Swinbank, R., and Fonteyn, D.: Data assimilation of stratospheric constituents: a review, *Atmos. Chem. Phys.*, 7, 5745–5773, doi:10.5194/acp-7-5745-2007, 2007. 489
- Lampton M: Damping-undamping strategies for the Levenberg-Marquardt nonlinear least-squares method, *Comput. Phys.*, 11, 110–115, 1997. 472
- Levenberg, K.: A method for the solution of certain problems in least squares, *Q. Appl. Math.*, 2, 164–168, 1944. 471, 472
- Marquardt, D. W.: An algorithm for the least-squares estimation of nonlinear parameters, *SIAM, J. Appl. Math.*, 11, 431–441, 1963. 471, 472

Ten years of MIPAS

P. Raspollini et al.

[Title Page](#)[Abstract](#)[Introduction](#)[Conclusions](#)[References](#)[Tables](#)[Figures](#)[⏪](#)[⏩](#)[◀](#)[▶](#)[Back](#)[Close](#)[Full Screen / Esc](#)[Printer-friendly Version](#)[Interactive Discussion](#)

- Mengistu Tsidu, G., von Clarmann, T., Stiller, G. P., Höpfner, M., Fischer, H., Glatthor, N., Grabowski, U., Kellmann, S., Kiefer, M., Linden, A., Milz, M., Steck, T., Wang, D. Y., Funke, B.: Stratospheric N₂O₅ in the austral spring 2002 as retrieved from limb emission spectra recorded by the Michelson Interferometer for Passive Atmospheric Sounding (MIPAS), *J. Geophys. Res.*, 109, D18301, doi:10.1029/2004JD004856, 2004. 481
- MIPAS (Michelson Interferometer for Passive Atmosphere Sounding): Potential of the experiment, data processing and validation of results, edited by: Hartogh, P. and Espy, P. J., *ACP Special Issues*, 2006. 470
- Moore, D. P. and Remedios, J. J.: Growth rates of stratospheric HCFC-22, *Atmos. Chem. Phys.*, 8, 73–82, doi:10.5194/acp-8-73-2008, 2008. 466
- Moore, D. P. and Remedios, J. J.: Seasonality of Peroxyacetyl nitrate (PAN) in the upper troposphere and lower stratosphere using the MIPAS-E instrument, *Atmos. Chem. Phys.*, 10, 6117–6128, doi:10.5194/acp-10-6117-2010, 2010. 466
- Oelhaf, H.: MIPAS mission plan, ENVI-SPPA-EOPG-TN-07-0073, Version 4.3, 2008. 469
- Pujol, J.: The solution of nonlinear inverse problems and the Levenberg-Marquardt method, *Geophysics*, 72, W1–W16, 2007. 473
- Payan, S., Camy-Peyret, C., Oelhaf, H., Wetzel, G., Maucher, G., Keim, C., Pirre, M., Huret, N., Engel, A., Volk, M. C., Kuellmann, H., Kuttippurath, J., Cortesi, U., Bianchini, G., Mencaraglia, F., Raspollini, P., Redaelli, G., Vigouroux, C., De Mazière, M., Mikuteit, S., Blumenstock, T., Velazco, V., Notholt, J., Mahieu, E., Duchatelet, P., Smale, D., Wood, S., Jones, N., Piccolo, C., Payne, V., Bracher, A., Glatthor, N., Stiller, G., Grunow, K., Jeseck, P., Te, Y., and Butz, A.: Validation of version-4.61 methane and nitrous oxide observed by MIPAS, *Atmos. Chem. Phys.*, 9, 413–442, doi:10.5194/acp-9-413-2009, 2009. 470
- Raspollini, P. and Ridolfi, M.: Mapping of temperature and line of sight errors in constituent retrievals for MIPAS/ENVISAT measurements, *Atmos. Environ.*, 34, 5329–5336, 2000. 485
- Raspollini, P., Belotti, C., Burgess, A., Carli, B., Carlotti, M., Ceccherini, S., Dinelli, B. M., Dudhia, A., Flaud, J.-M., Funke, B., Höpfner, M., López-Puertas, M., Payne, V., Piccolo, C., Remedios, J. J., Ridolfi, M., and Spang, R.: MIPAS level 2 operational analysis, *Atmos. Chem. Phys.*, 6, 5605–5630, doi:10.5194/acp-6-5605-2006, 2006. 466, 469, 470, 471, 474, 479, 480, 484, 487, 488
- Remedios, J. J., Leigh, R. J., Waterfall, A. M., Moore, D. P., Sembhi, H., Parkes, I., Greenhough, J., Chipperfield, M.P., and Hauglustaine, D.: MIPAS reference atmospheres and com-

Ten years of MIPAS

P. Raspollini et al.

parisons to V4.61/V4.62 MIPAS level 2 geophysical data sets, *Atmos. Chem. Phys. Discuss.*, 7, 9973–10017, doi:10.5194/acpd-7-9973-2007, 2007. 480, 486, 508

Ridolfi, M. and Sgheri, L.: A self-adapting and altitude-dependent regularization method for atmospheric profile retrievals, *Atmos. Chem. Phys.*, 9, 1883–1897, doi:10.5194/acp-9-1883-2009, 2009. 479

Ridolfi, M. and Sgheri, L.: Iterative approach to self-adapting and altitude-dependent regularization for atmospheric profile retrievals, *Opt. Express*, 19, 26696–26709, 2011. 479

Ridolfi, M., Carli, B., Carlotti, M., von Clarmann, T., Dinelli, B. M., Dudhia, A., Flaud, J. M., Höpfner, M., Morris, P. E., Raspollini, P., Stiller, G., and Wells, R. J.: Optimized forward model and retrieval scheme for MIPAS near-real-time data processing, *Appl. Optics*, 39, 1323–1340, 2000. 466, 469, 471, 488

Ridolfi, M., Blum, U., Carli, B., Catoire, V., Ceccherini, S., Claude, H., De Clercq, C., Fricke, K. H., Friedl-Vallon, F., Iarlori, M., Keckhut, P., Kerridge, B., Lambert, J.-C., Meijer, Y. J., Mona, L., Oelhaf, H., Pappalardo, G., Pirre, M., Rizi, V., Robert, C., Swart, D., von Clarmann, T., Waterfall, A., and Wetzel, G.: Geophysical validation of temperature retrieved by the ESA processor from MIPAS/ENVISAT atmospheric limb-emission measurements, *Atmos. Chem. Phys.*, 7, 4459–4487, doi:10.5194/acp-7-4459-2007, 2007. 470, 489

Rodgers, C. D.: *Inverse Methods for Atmospheric Sounding: Theory and Practice*, Atmospheric, Oceanic and Planetary Physics, World Scientific, Singapore, 2000. 465, 466, 489

Spang, R., Eidmann, G., Riese, M., Preusse, P., Offermann, D., Pfister, L., and Wang, P. H.: CRISTA observations of cirrus clouds around the tropopause, *J. Geophys. Res.*, 107, 8174, doi:10.1029/2001JD000698, 2002.

Spang, R., Remedios, J. J., and Barkley, M.: Colour indices for the detection and differentiation of cloud types in infra-red limb emission spectra, *Adv. Space Res.*, 33, 1041–1047, 2004.

Strong, K., Wolff, M. A., Kerzenmacher, T. E., Walker, K. A., Bernath, P. F., Blumenstock, T., Boone, C., Catoire, V., Coffey, M., De Mazière, M., Demoulin, P., Duchatelet, P., Dupuy, E., Hannigan, J., Höpfner, M., Glatthor, N., Griffith, D. W. T., Jin, J. J., Jones, N., Jucks, K., Kuellmann, H., Kuttippurath, J., Lambert, A., Mahieu, E., McConnell, J. C., Mellqvist, J., Mikuteit, S., Murtagh, D. P., Notholt, J., Piccolo, C., Raspollini, P., Ridolfi, M., Robert, C., Schneider, M., Schrems, O., Semeniuk, K., Senten, C., Stiller, G. P., Strandberg, A., Taylor, J., Tétard, C., Toohey, M., Urban, J., Warneke, T., and Wood, S.: Validation of ACE-FTS N₂O measurements, *Atmos. Chem. Phys.*, 8, 4759–4786, doi:10.5194/acp-8-4759-2008, 2008. 482

Title Page

Abstract

Introduction

Conclusions

References

Tables

Figures

◀

▶

◀

▶

Back

Close

Full Screen / Esc

Printer-friendly Version

Interactive Discussion



Ten years of MIPAS

P. Raspollini et al.

Title Page

Abstract

Introduction

Conclusions

References

Tables

Figures

◀

▶

◀

▶

Back

Close

Full Screen / Esc

Printer-friendly Version

Interactive Discussion



Thépaut, J.-N., Dragani, R., Abdalla, S., and Engelen, R.: Assimilation of ENVISAT data for numeric weather prediction, environmental monitoring and reanalysis applications, Proceedings of IGARSS 2012, 2012. 466

Tikhonov, A.: On the solution of incorrectly stated problems and method of regularization, Dokl. Akad. Nauk SSSR, 151, 501–504, 1963. 477

von Clarmann, T. and Echle, G.: Selection of optimized microwindows for atmospheric spectroscopy, Appl. Optics, 37, 7661–7669, 1998. 470

von Clarmann, T., Ceccherini, S., Doicu, A., Dudhia, A., Funke, B., Grabowski, U., Hilgers, S., Jay, V., Linden, A., López-Puertas, M., Martin-Torres, F.-J., Payne, V., Reburn, J., Ridolfi, M., Schreier, F., Schwarz, G., Siddans, T., and Steck, T.: A blind test retrieval experiment for infrared limb emission spectrometry, J. Geophys. Res., 108, 4746, doi:10.1029/2003JD003835, 2003a. 466

von Clarmann, T., Glatthor, N., Grabowski, U., Höpfner, M., Kellmann, S., Kiefer, M., Linden, A., Mengistu Tsidu, G., Milz, M., Steck, T., Stiller, G. P., Wang, D. Y., Fischer, H., Funke, B., Gil-López, S., and López-Puertas, M.: Retrieval of temperature and tangent altitude pointing from limb emission spectra recorded from space by the Michelson Interferometer for Passive Atmospheric Sounding (MIPAS), J. Geophys. Res., 108, 4736, doi:10.1029/2003JD003602, 2003b. 465, 477, 483

von Clarmann, T., Glatthor, N., Grabowski, U., Höpfner, M., Kellmann, S., Linden, A., Mengistu Tsidu, G., Milz, M., Steck, T., Stiller, G. P., Fischer, H., and Funke, B.: Global stratospheric HOCl distributions retrieved from infrared limb emission spectra recorded by the Michelson Interferometer for Passive Atmospheric Sounding (MIPAS), J. Geophys. Res., 111, D05311, doi:10.1029/2005JD005939, 2006. 482

von Clarmann, T., De Clercq, C., Ridolfi, M., Höpfner, M., and Lambert, J.-C.: The horizontal resolution of MIPAS, Atmos. Meas. Tech., 2, 47–54, doi:10.5194/amt-2-47-2009, 2009a. 490

von Clarmann, T., Höpfner, M., Kellmann, S., Linden, A., Chauhan, S., Funke, B., Grabowski, U., Glatthor, N., Kiefer, M., Schieferdecker, T., Stiller, G. P., and Versick, S.: Retrieval of temperature, H₂O, O₃, HNO₃, CH₄, N₂O, ClONO₂ and ClO from MIPAS reduced resolution nominal mode limb emission measurements, Atmos. Meas. Tech., 2, 159–175, doi:10.5194/amt-2-159-2009, 2009b. 465, 477

Wang, D. Y., Höpfner, M., Blom, C. E., Ward, W. E., Fischer, H., Blumenstock, T., Hase, F., Keim, C., Liu, G. Y., Mikuteit, S., Oelhaf, H., Wetzel, G., Cortesi, U., Mencaraglia, F., Bianchini, G., Redaelli, G., Pirre, M., Catoire, V., Huret, N., Vigouroux, C., De Mazière, M.,

Mahieu, E., Demoulin, P., Wood, S., Smale, D., Jones, N., Nakajima, H., Sugita, T., Urban, J., Murtagh, D., Boone, C. D., Bernath, P. F., Walker, K. A., Kuttippurath, J., Kleinböhl, A., Toon, G., and Piccolo, C.: Validation of MIPAS HNO₃ operational data, *Atmos. Chem. Phys.*, 7, 4905–4934, doi:10.5194/acp-7-4905-2007, 2007. 470

- 5 Wetzell, G., Bracher, A., Funke, B., Goutail, F., Hendrick, F., Lambert, J.-C., Mikuteit, S., Piccolo, C., Pirre, M., Bazureau, A., Belotti, C., Blumenstock, T., De Mazière, M., Fischer, H., Huret, N., Ionov, D., López-Puertas, M., Maucher, G., Oelhaf, H., Pommereau, J.-P., Ruhnke, R., Sinnhuber, M., Stiller, G., Van Roozendael, M., and Zhang, G.: Validation of MIPAS-ENVISAT NO₂ operational data, *Atmos. Chem. Phys.*, 7, 3261–3284, doi:10.5194/acp-7-3261-2007, 2007. 470
- 10

AMTD

6, 461–518, 2013

Ten years of MIPAS

P. Raspollini et al.

Title Page

Abstract

Introduction

Conclusions

References

Tables

Figures

◀

▶

◀

▶

Back

Close

Full Screen / Esc

Printer-friendly Version

Interactive Discussion



Table 1. Characteristics of FR and OR measurements for the most used measurement modes of the two phases of the mission.

FR measurements		(from June 2002 to March 2004)		Spectral resolution: 0.025 cm ⁻¹	
Horizontal sampling			Vertical sampling		
550 km	3 km step 6–42 km	5 km step 42–52 km	8 km step 52–68 km		
OR measurements		(from January 2005 to April 2012)		Spectral resolution: 0.0625 cm ⁻¹	
Horizontal sampling			Vertical sampling		
NOM mode					
410 km	1.5 km step 6–21 km	2 km step 21–31 km	3 km step 31–46 km	4 km step 46–62 km	4.5 km step 62–71 km
UTLS-1 mode					
290 km	1.5 km step 8–21.5 km	2 km step 21.5–27.5 km	3 km step 27.5–33.5 km	4.5 km step 33.5–51.5 km	
MA mode					
430 km			3 km step 18–102 km		
UA mode					
375 km	3 km step 42–102 km	5 km step 102–172 km			

[Title Page](#)[Abstract](#)[Introduction](#)[Conclusions](#)[References](#)[Tables](#)[Figures](#)[◀](#)[▶](#)[◀](#)[▶](#)[Back](#)[Close](#)[Full Screen / Esc](#)[Printer-friendly Version](#)[Interactive Discussion](#)

Table 2. Spectral intervals selected for the retrieval of pressure and temperature, H₂O, O₃ and HNO₃ in the two phases of the mission.

FR			OR		
MW	Spectral interval [cm ⁻¹]	Altitude range [km]	MW	Spectral interval [cm ⁻¹]	Altitude range [km]
pT					
PT_0039	685.7–685.825	33–47	PT_0365	703.375–703.875	21–37
PT_0001	686.4–689.4	30–68	PT_0366	719.0625–720.625	27–66
PT_0037	694.8–695.1	27–36	PT_0361	740.9375–743.9375	15–70
PT_0038	700.475–701.1	21–30	PT_0362	791.625–792.25	9–21
PT_0004	728.3–729.125	15–27	PT_0363	937.5–940.5	6–23
PT_0006	741.975–742.25	15–24	PT_0364	942.31–944.62	6–27
PT_0002	791.375–792.875	6–33			
H ₂ O					
H2O_0002	807.85–808.45	9–18	H2O_0333	953.6875–956.6875	6–40
H2O_0022	946.65–947.7	6–18	H2O_0331	1223.75–1226.25	7.5–18
H2O_0007	1645.525–1646.2	27–60	H2O_0334	1387.5625–1390.5	12–70
H2O_0001	1650.025–1653.025	15–68	H2O_0335	1391.75–1394.75	12–54
			H2O_0332	1649.875–1652.875	15–66
O ₃					
O3_0021	763.375–766.375	6–68	O3_0334	729.25–732.25	15–42
O3_0013	1039.375–1040.325	52–68	O3_0335	756.625–759.625	9–36
O3_0001	1122.8–1125.8	6–68	O3_0343	1043–1046	27–68
			O3_0333	1117–1120	6–42
			O3_0331	1123.5625–1126.5625	9–68
HNO ₃					
HNO3_0001	876.375–879.375	6–42	HNO3_0332	836.875–839.875	6–42
HNO3_0006	885.1–888.1	6–42	HNO3_0334	859.5625–862.5625	9–42
			HNO3_0341	877.0–880.0	6–42
			HNO3_0333	893.625–896.625	6–42
			HNO3_0335	918.9375–921.9375	9–42

[Title Page](#)[Abstract](#)[Introduction](#)[Conclusions](#)[References](#)[Tables](#)[Figures](#)[◀](#)[▶](#)[◀](#)[▶](#)[Back](#)[Close](#)[Full Screen / Esc](#)[Printer-friendly Version](#)[Interactive Discussion](#)

Table 3. Spectral intervals selected for the retrieval of CH₄, N₂O and NO₂ in the two phases of the mission.

FR			OR		
MW	Spectral interval [cm ⁻¹]	Altitude range [km]	MW	Spectral interval [cm ⁻¹]	Altitude range [km]
CH ₄					
CH4_0012	1227.175–1230.175	6–60	CH4_0334	1219.0625–1222.0625	9–21
CH4_0001	1350.875–1353.875	12–68	CH4_0331	1228.4375–1231.4375	6–60
			CH4_0335	1233.8125–1236.8125	6–18
			CH4_0333	1281.5625–1284.5625	12–41
			CH4_0332	1304.5625–1307.5625	21–18
N ₂ O					
N2O_0012	1233.275–1236.275	6–27	N2O_0332	1230.375–1233.3125	6–21
N2O_0001	1272.05–1275.05	12–60	N2O_0333	1233.5625–1235.8125	9–33
			N2O_0335	1256.6875–1259.5625	9–30
			N2O_0331	1271.625–1274.625	15–60
			N2O_0334	1276.3125–1279.3125	15–60
NO ₂					
NO2_0012	1607.275–1610.275	24–68	NO2_0333	1570.5–1573.5	24–27
NO2_0003	1613.725–1616.6	24–68	NO2_0334	1602.5–1605.5	24–60
NO2_0013	1622.55–1623.475	24–30	NO2_0335	1608.625–1611.625	24–48
			NO2_0332	1613.5–1616.5	24–68
			NO2_0331	1626.0–1629.0	24–68

Title Page

Abstract

Introduction

Conclusions

References

Tables

Figures

⏪

⏩

◀

▶

Back

Close

Full Screen / Esc

Printer-friendly Version

Interactive Discussion



Table 4. Spectral intervals selected for the retrieval of CFC-11, CFC-12, N₂O₅ and ClONO₂ in the two phases of the mission.

FR			OR		
MW	Spectral interval [cm ⁻¹]	Altitude range [km]	MW	Spectral interval [cm ⁻¹]	Altitude range [km]
CFC-11					
F11.0103	839.625–842.625	6–33	F11.0333	824.875–827.0	7.5–21
F11.0101	842.65–845.65	6–33	F11.0335	835.0625–838.0625	6–18
F11.0105	846.45–849.45	9–33	F11.0334	839.875–842.875	7.5–16.5
F11.0102	849.475–852.475	6–33	F11.0332	842.9375–845.9375	6–34
F11.0104	853.075–856.075	6–33	F11.0331	849.5–852.5	13.5–34
CFC-12					
F12.0103	918.375–921.375	6–39	F12.0335	857.5–860.5	6–40
F12.0101	921.4–924.4	6–39	F12.0334	917.9375–920.9375	6–40
F12.0104	924.425–927.425	12–39	F12.0331	921.0–924.0	6–40
F12.0105	929.125–932.125	6–39	F12.0333	933.625–936.625	6–37
F12.0102	1159.7–1162.7	6–39	F12.0332	937.0625–940.0625	12–40
ClONO ₂					
CLNO.0101	778.525–781.525	18–42	CLNO.0331	777.4375–780.4375	18–37
CLNO.0105	805.4–808.4	18–39	CLNO.0333	807.375–810.375	15–34
CLNO.0103	808.425–811.425	15–36	CLNO.0335	1724.0–1727.00	13.5–40
CLNO.0102	1290.625–1293.625	15–42	CLNO.0332	1736.6875–1739.6875	13.5–43
CLNO.0104	1303.35–1306.35	15–42	CLNO.0334	1743.8125–1746.1875	13.5–31
N ₂ O ₅					
N2O5.0121	1220.0750–1223.075	15–42	N2O5.0355	1220.0–1223.0	15–46
N2O5.0125	1272.05–1275.05	15–42	N2O5.0351	1225.25–1228.25	15–46
N2O5.0123	1225.75–1228.75	15–42	N2O5.0353	1230.3125–1233.3125	15–40
N2O5.0124	1238.8250–1241.8250	15–42	N2O5.0352	1237.4375–1240.4375	18–46
N2O5.0122	1243.45–1246.45	15–42	N2O5.0354	1244.5625–1247.5625	16.5–46

[Title Page](#)[Abstract](#)[Introduction](#)[Conclusions](#)[References](#)[Tables](#)[Figures](#)[⏪](#)[⏩](#)[◀](#)[▶](#)[Back](#)[Close](#)[Full Screen / Esc](#)[Printer-friendly Version](#)[Interactive Discussion](#)

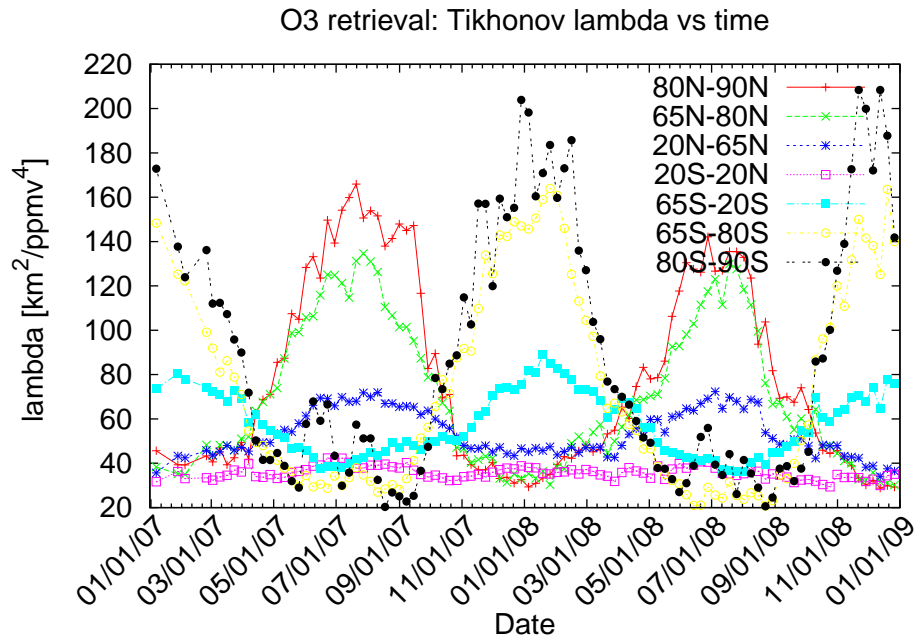


Fig. 1. Time evolution of the regularization strength used in Ozone retrieval from January 2007 to December 2008 for the different latitude bands indicated in the legend. Points represent weekly means.

[Title Page](#)[Abstract](#)[Introduction](#)[Conclusions](#)[References](#)[Tables](#)[Figures](#)[◀](#)[▶](#)[◀](#)[▶](#)[Back](#)[Close](#)[Full Screen / Esc](#)[Printer-friendly Version](#)[Interactive Discussion](#)

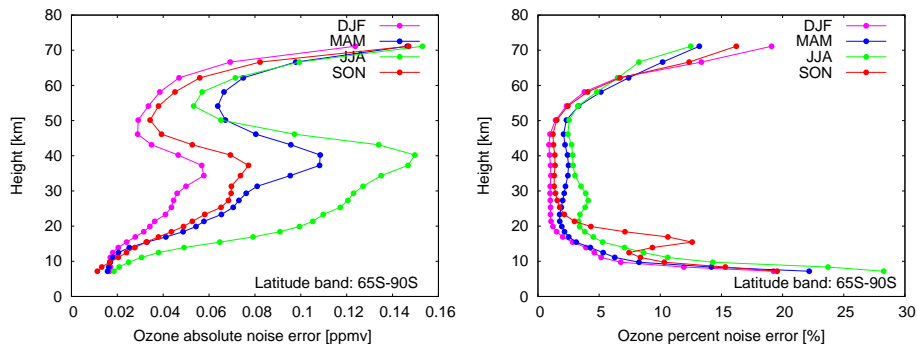


Fig. 2. Absolute (left plot) and percent (right plot) noise error of O₃ profile averaged on all profiles of the 65° S–90° S latitude band in the four seasons of year 2008 (December 2007, January and February 2008 (DJF), March, April and May 2008 (MAM), June, July and August 2008 (JJA), September, October and November 2008 (SON)).

[Title Page](#)[Abstract](#)[Introduction](#)[Conclusions](#)[References](#)[Tables](#)[Figures](#)[◀](#)[▶](#)[◀](#)[▶](#)[Back](#)[Close](#)[Full Screen / Esc](#)[Printer-friendly Version](#)[Interactive Discussion](#)

Ten years of MIPAS

P. Raspollini et al.

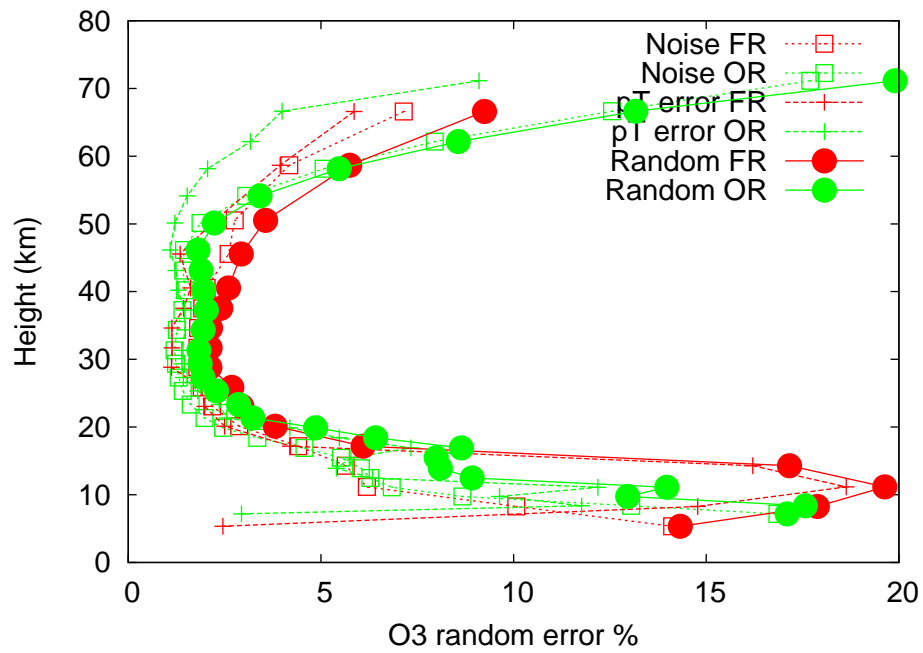


Fig. 3. Contribution of noise error and pressure and temperature propagation error to the random error of O₃ for FR measurements (red curves) and OR measurements (green curves). All errors are in percentage.

Title Page

Abstract	Introduction
Conclusions	References
Tables	Figures

◀	▶
◀	▶
Back	Close

Full Screen / Esc

Printer-friendly Version

Interactive Discussion



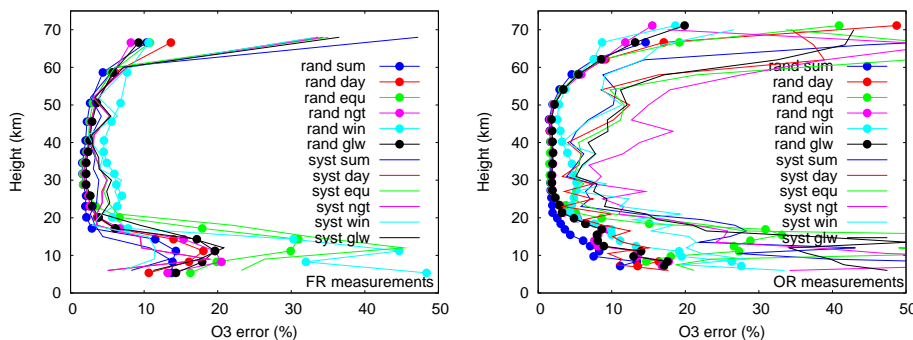


Fig. 4. Percent single scan random and systematic errors of O_3 profile retrieved from FR (left plot) and OR (right plot) measurements. Both the average random error profiles and the estimated systematic error profiles are provided for the following five reference atmospheres: middle latitude day-time (day), mid-latitude night-time (ngt), polar summer day-time (sum), polar winter night-time (win) and equatorial day-time atmospheres (equ) (Remedios et al., 2007). Random errors for the global atmosphere (glw) are obtained by averaging the random error profiles of a year of measurements, systematic errors for the global atmosphere are obtained by a composite of results for the five reference atmospheres, with twice the weight given to results from the polar winter case.

[Title Page](#)
[Abstract](#)
[Introduction](#)
[Conclusions](#)
[References](#)
[Tables](#)
[Figures](#)
[◀](#)
[▶](#)
[◀](#)
[▶](#)
[Back](#)
[Close](#)
[Full Screen / Esc](#)
[Printer-friendly Version](#)
[Interactive Discussion](#)

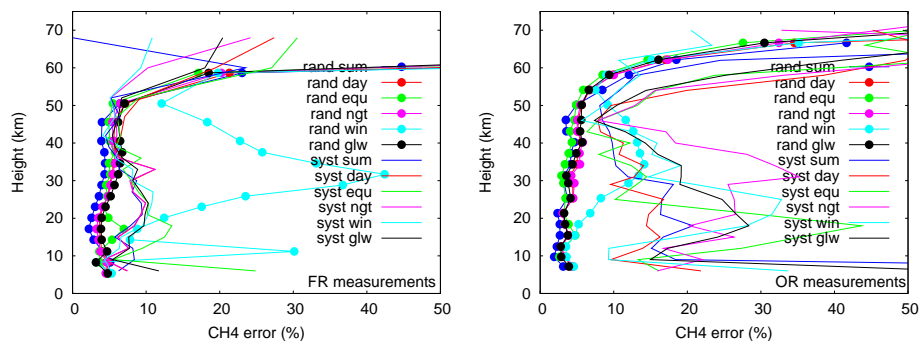



Fig. 5. Percent single scan random and systematic errors of CH_4 profile retrieved from FR measurements (left plot) and OR measurements (right plot). For the description of the reference atmospheres for which random and systematic errors are provided refer to Fig. 4.

[Title Page](#)
[Abstract](#)
[Introduction](#)
[Conclusions](#)
[References](#)
[Tables](#)
[Figures](#)
[◀](#)
[▶](#)
[◀](#)
[▶](#)
[Back](#)
[Close](#)
[Full Screen / Esc](#)
[Printer-friendly Version](#)
[Interactive Discussion](#)

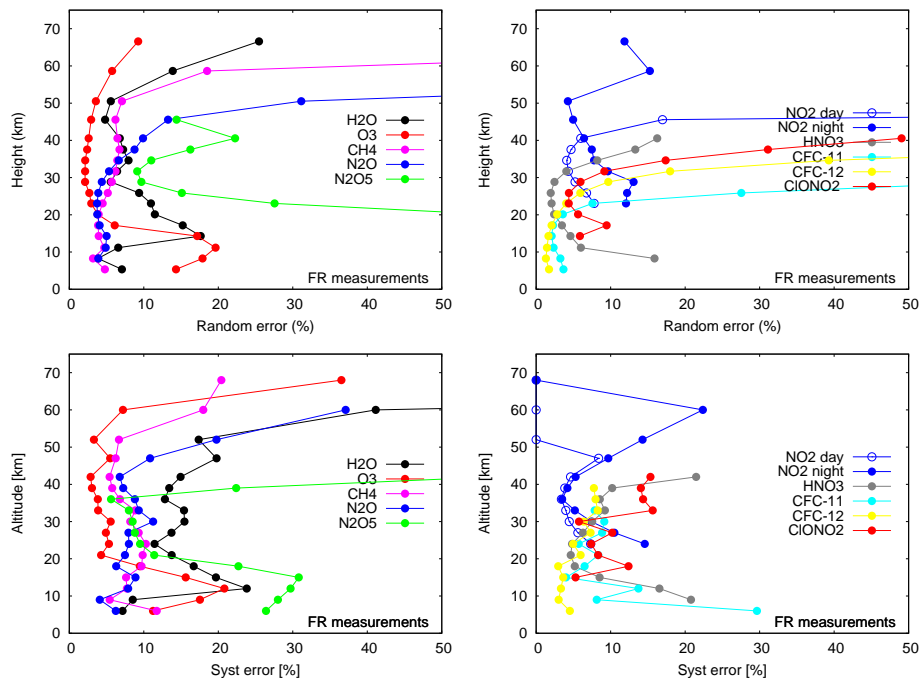



Fig. 6. Top panels: percent yearly mean of single scan random error profiles retrieved from FR measurements for the species indicated in the plots' keys. Bottom panels: corresponding percent single scan systematic error profiles relative to the global atmosphere.

Title Page

Abstract

Introduction

Conclusions

References

Tables

Figures

◀

▶

◀

▶

Back

Close

Full Screen / Esc

Printer-friendly Version

Interactive Discussion



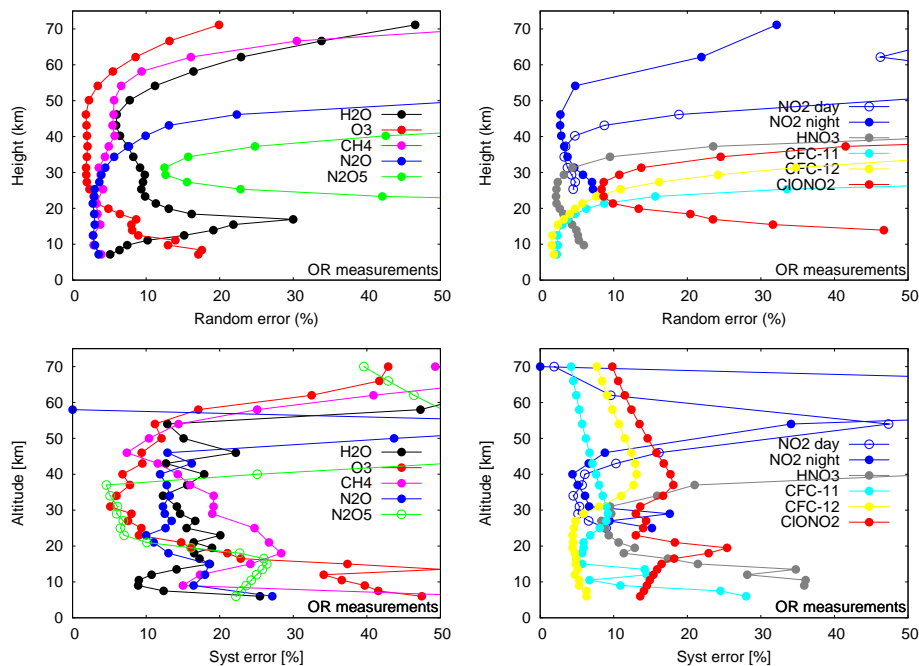


Fig. 7. Top panels: percent yearly mean of single scan random error profiles retrieved from OR measurements for the species indicated in the plots' keys. Bottom panels: corresponding percent single scan systematic error profiles relative to the global atmosphere.

[Title Page](#)
[Abstract](#)
[Introduction](#)
[Conclusions](#)
[References](#)
[Tables](#)
[Figures](#)
[◀](#)
[▶](#)
[◀](#)
[▶](#)
[Back](#)
[Close](#)
[Full Screen / Esc](#)
[Printer-friendly Version](#)
[Interactive Discussion](#)

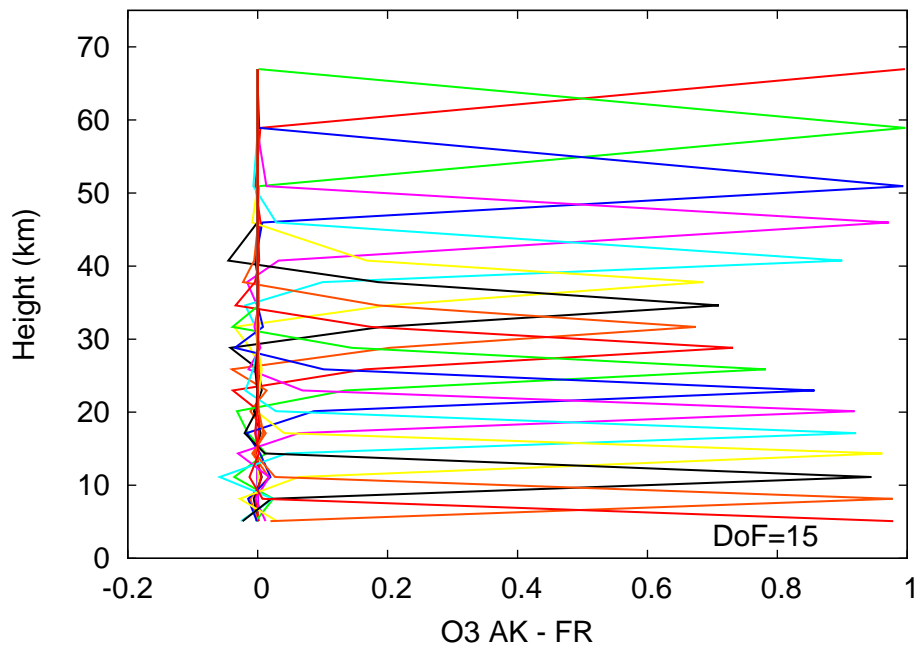
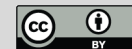



Fig. 8. O₃ AKs for a representative scan of the FR measurements.

Title Page	
Abstract	Introduction
Conclusions	References
Tables	Figures
◀	▶
◀	▶
Back	Close
Full Screen / Esc	
Printer-friendly Version	
Interactive Discussion	



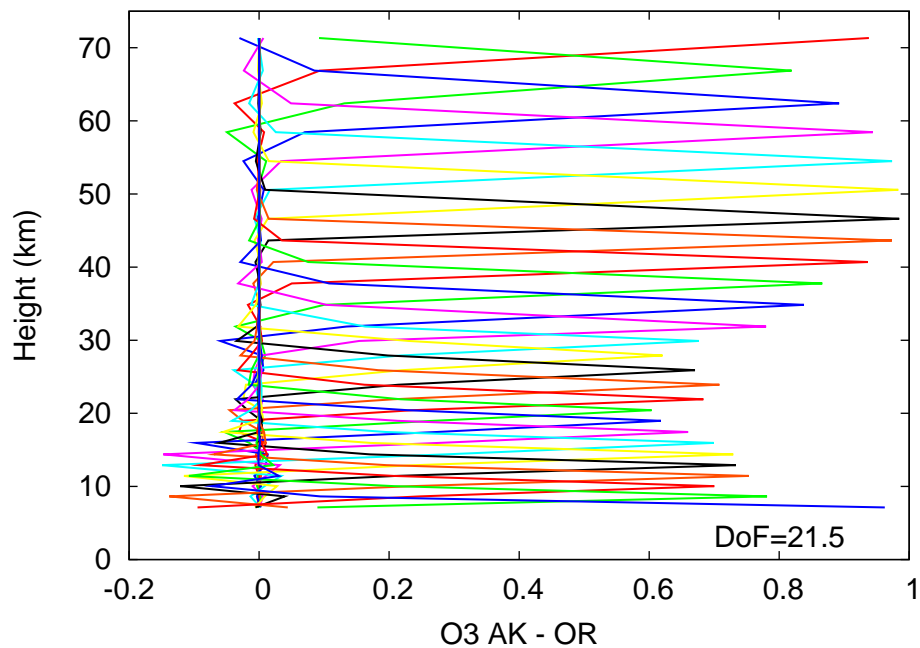


Fig. 9. O₃ AK for a representative scan of the OR measurements.

Title Page

Abstract

Introduction

Conclusions

References

Tables

Figures

◀

▶

◀

▶

Back

Close

Full Screen / Esc

Printer-friendly Version

Interactive Discussion



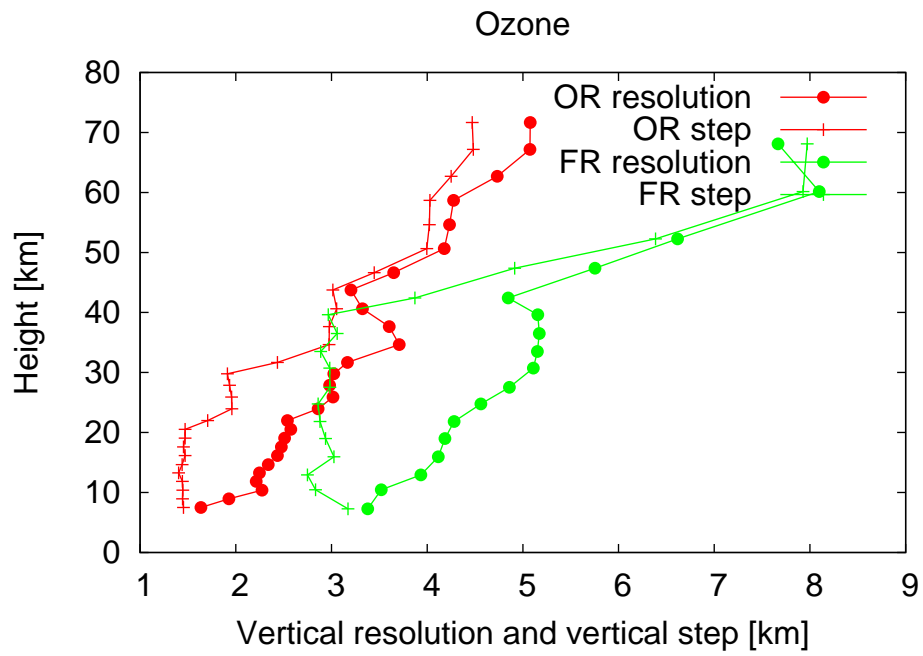


Fig. 10. Vertical resolution profile and vertical retrieval steps for ozone profile retrieved from FR measurements (green curves) and OR measurements (red curves), as indicated in the plot's key.

Title Page

Abstract Introduction

Conclusions References

Tables Figures

◀

▶

◀

▶

Back

Close

Full Screen / Esc

Printer-friendly Version

Interactive Discussion



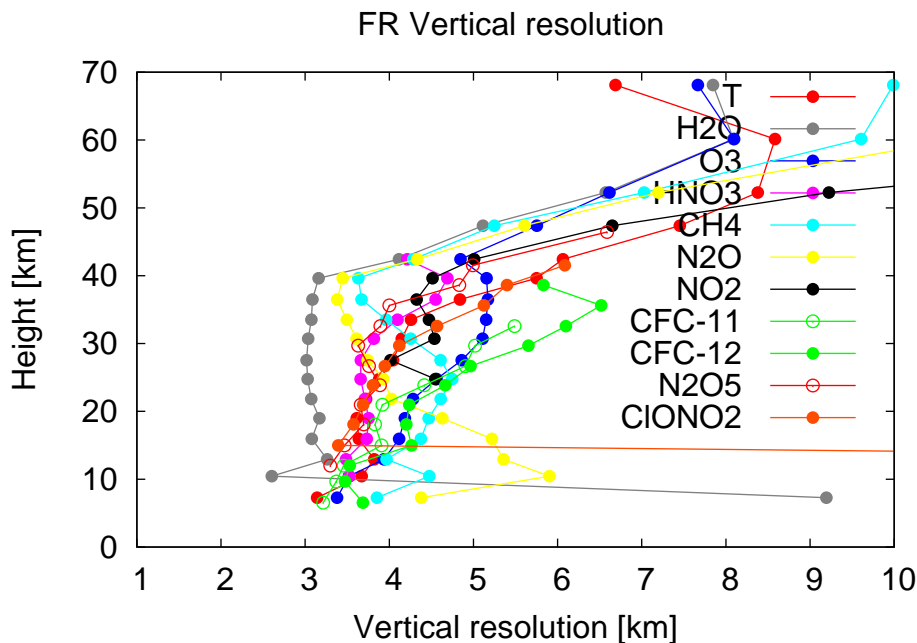


Fig. 11. Vertical resolution profile of T , H_2O , O_3 , HNO_3 , CH_4 , N_2O , NO_2 , CFC-12, CFC-11, $ClONO_2$ and N_2O_5 retrieved from FR measurements.

[Title Page](#)[Abstract](#)[Introduction](#)[Conclusions](#)[References](#)[Tables](#)[Figures](#)[◀](#)[▶](#)[◀](#)[▶](#)[Back](#)[Close](#)[Full Screen / Esc](#)[Printer-friendly Version](#)[Interactive Discussion](#)

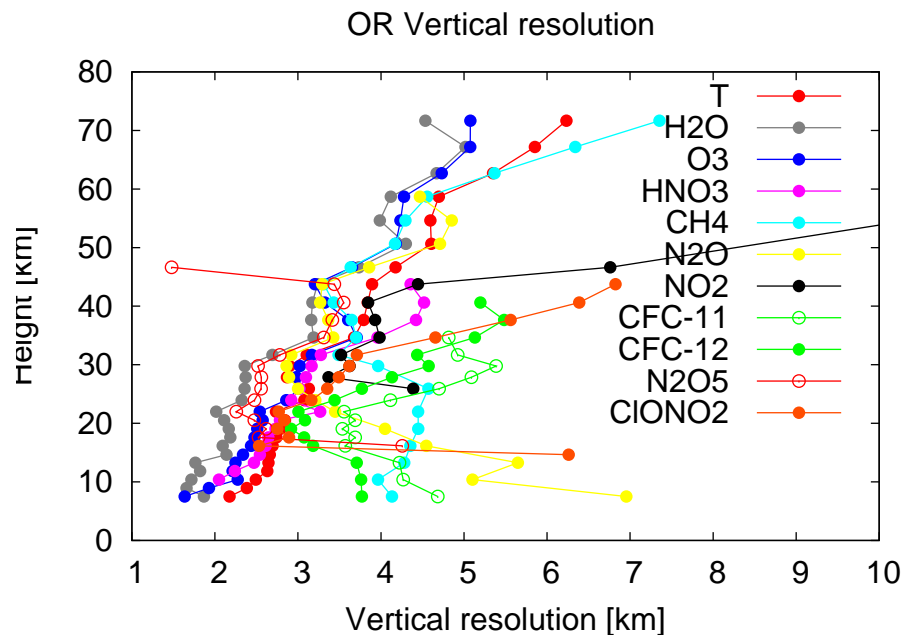


Fig. 12. Vertical resolution profile of T , H_2O , O_3 , HNO_3 , CH_4 , N_2O , NO_2 , CFC-12, CFC-11, $ClONO_2$ and N_2O_5 retrieved from OR measurements.

Title Page

Abstract Introduction

Conclusions References

Tables Figures

◀ ▶

◀ ▶

Back Close

Full Screen / Esc

Printer-friendly Version

Interactive Discussion



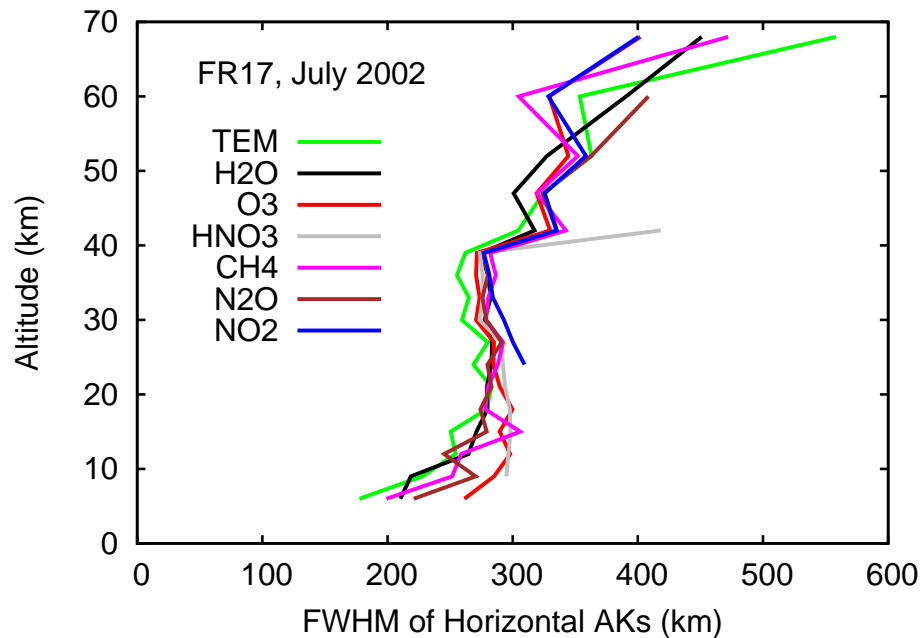


Fig. 13. FWHM of FR horizontal AKs relating to Temperature, and the VMR of H₂O, O₃, HNO₃, CH₄, N₂O, NO₂. The assumed atmosphere is the one from IG2, July 2002.

Title Page

Abstract	Introduction
Conclusions	References
Tables	Figures

◀	▶
◀	▶
Back	Close

Full Screen / Esc

Printer-friendly Version

Interactive Discussion



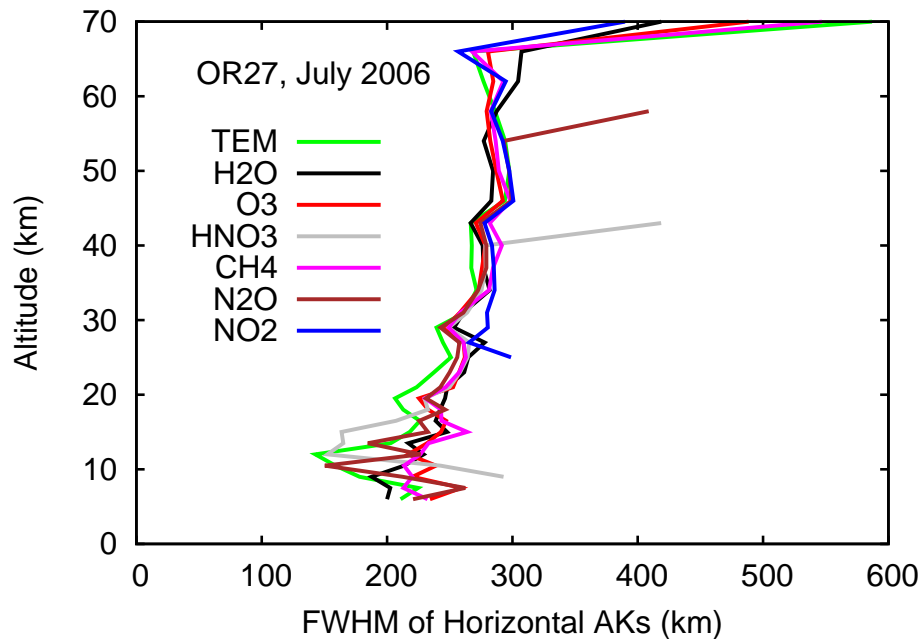


Fig. 14. FWHM of OR horizontal AKs relating to Temperature, and the VMR of H₂O, O₃, HNO₃, CH₄, N₂O, NO₂. The assumed atmosphere is the one from IG2, July 2006.

[Title Page](#)[Abstract](#)[Introduction](#)[Conclusions](#)[References](#)[Tables](#)[Figures](#)[◀](#)[▶](#)[◀](#)[▶](#)[Back](#)[Close](#)[Full Screen / Esc](#)[Printer-friendly Version](#)[Interactive Discussion](#)