

Interactive comment on “Applying receptor models Unmix and PMF on real data set of elements in PM for sources evaluation of the sea coastal side region (Southeast Adriatic Sea)” by D. Đorđević et al.

D. Đorđević et al.

dragadj@chem.bg.ac.rs

Received and published: 29 November 2013

Dear Editor,

Please find the corrected Manuscript according to Reviewer 1, together with answers according to their comments.

In the corrected Manuscript we have highlighted the parts with corrections.

The authors are very grateful to reviewers efforts to help us to improve our manuscript.

C3507

With best regards Dragana Dordevic

Please also note the supplement to this comment:

<http://www.atmos-meas-tech-discuss.net/6/C3507/2013/amtd-6-C3507-2013-supplement.pdf>

Interactive comment on Atmos. Meas. Tech. Discuss., 6, 4941, 2013.



Fig. 1.

C3509

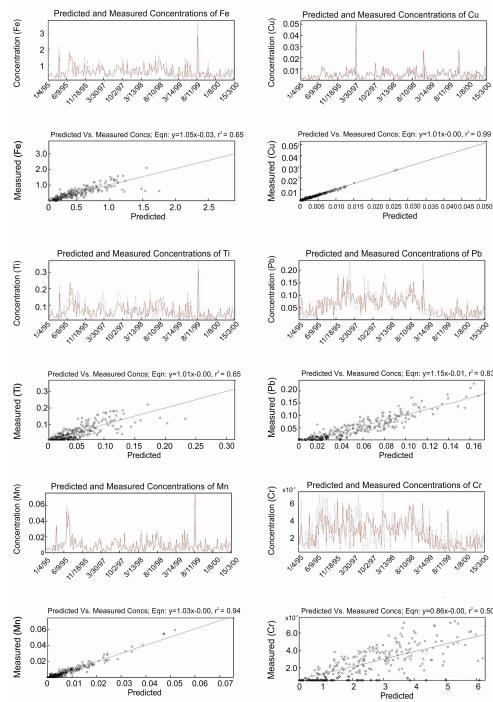


Fig. 2.

C3510

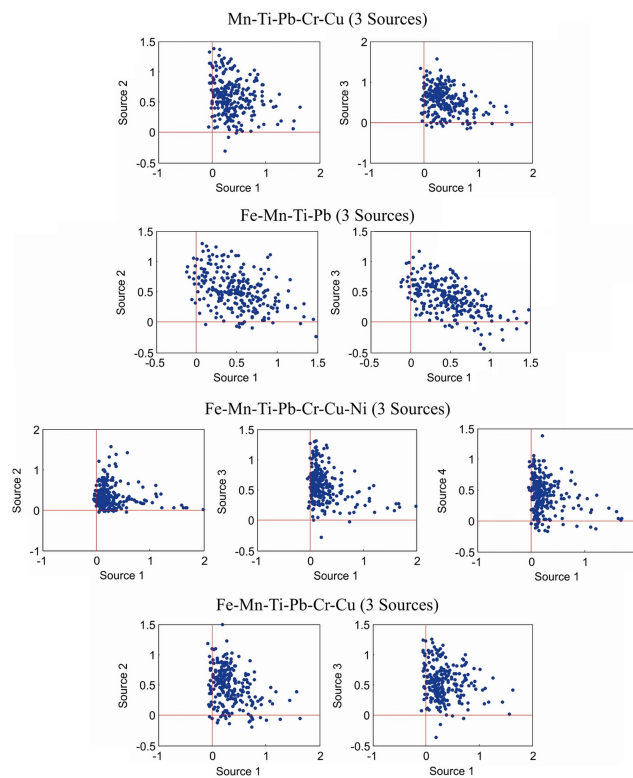


Fig. 3.

C3511

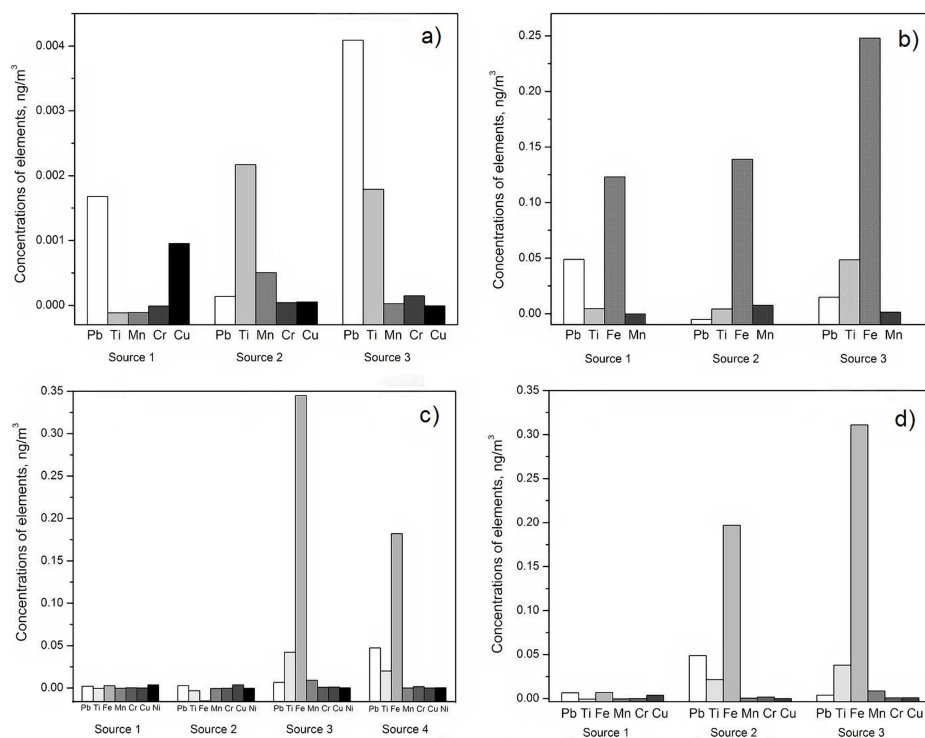


Fig. 4.

C3512

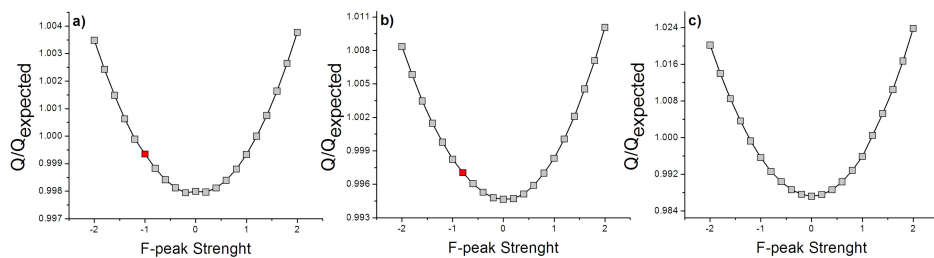


Fig. 5.

C3513

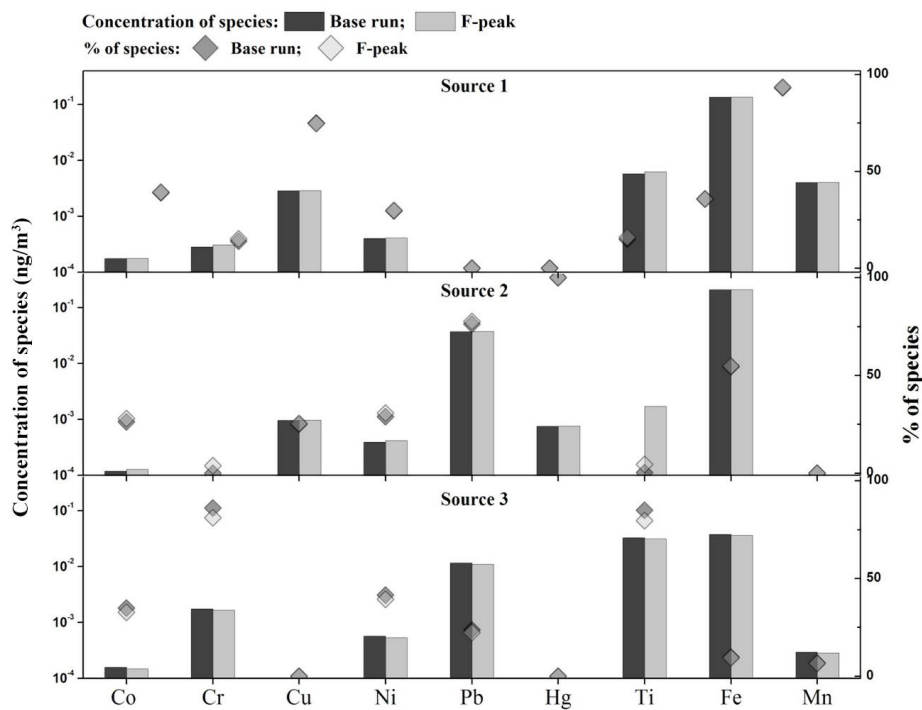


Fig. 6.

C3514

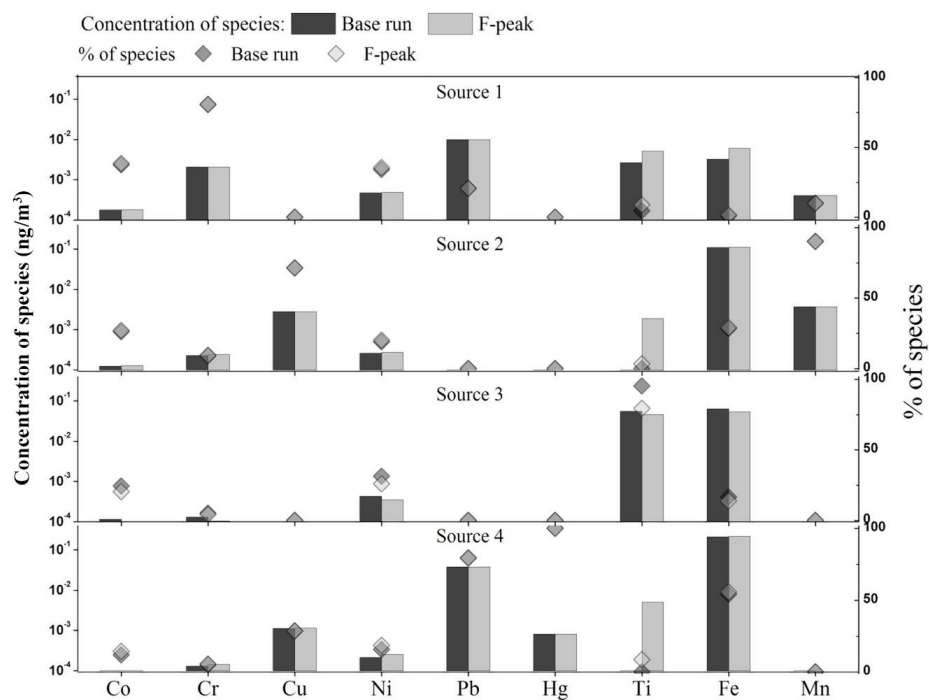


Fig. 7.

C3515

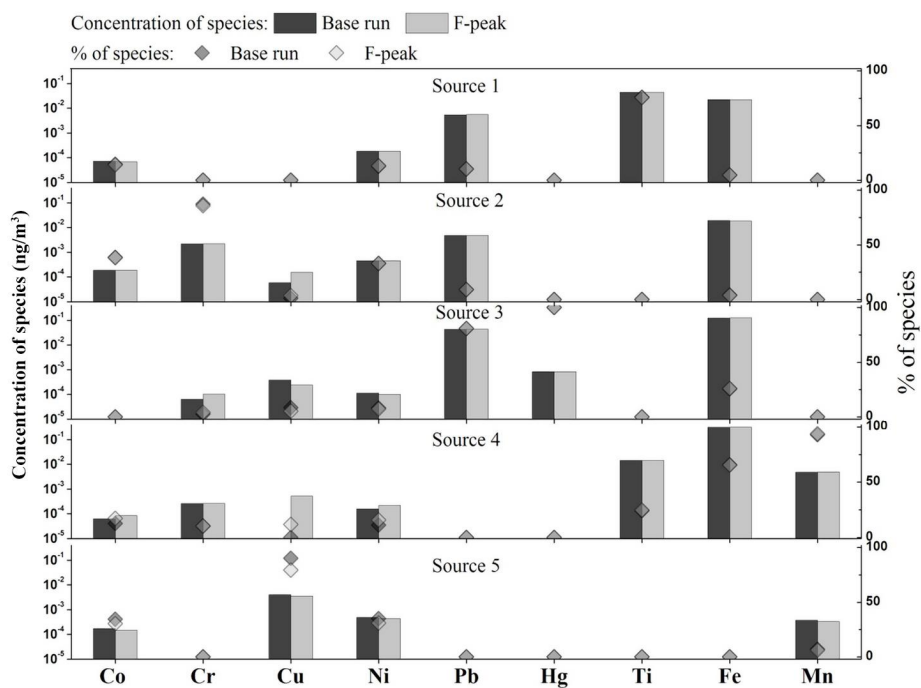


Fig. 8.

C3516