



Interactive
Comment

Interactive comment on “Applying receptor models Unmix and PMF on real data set of elements in PM for sources evaluation of the sea coastal side region (Southeast Adriatic Sea)” by D. Đorđević et al.

D. Đorđević et al.

dragadj@chem.bg.ac.rs

Received and published: 29 November 2013

Dear Editor,

Please find the corrected Manuscript amt-2013-50 according to the Reviewer 2 comments together with the answers one by one on their comments at the end of the manuscript.

The authors are very grateful to reviewers efforts to help us to improve our work.

Full Screen / Esc

Printer-friendly Version

Interactive Discussion

Discussion Paper



With best regards

Dragana

Please also note the supplement to this comment:

<http://www.atmos-meas-tech-discuss.net/6/C3527/2013/amtd-6-C3527-2013-supplement.pdf>

Interactive comment on Atmos. Meas. Tech. Discuss., 6, 4941, 2013.

AMTD

6, C3527–C3536, 2013

Interactive
Comment

Full Screen / Esc

Printer-friendly Version

Interactive Discussion

Discussion Paper

C3528





Fig. 1. Sampling site and prevailing wind directions

Full Screen / Esc

Printer-friendly Version

Interactive Discussion

Discussion Paper



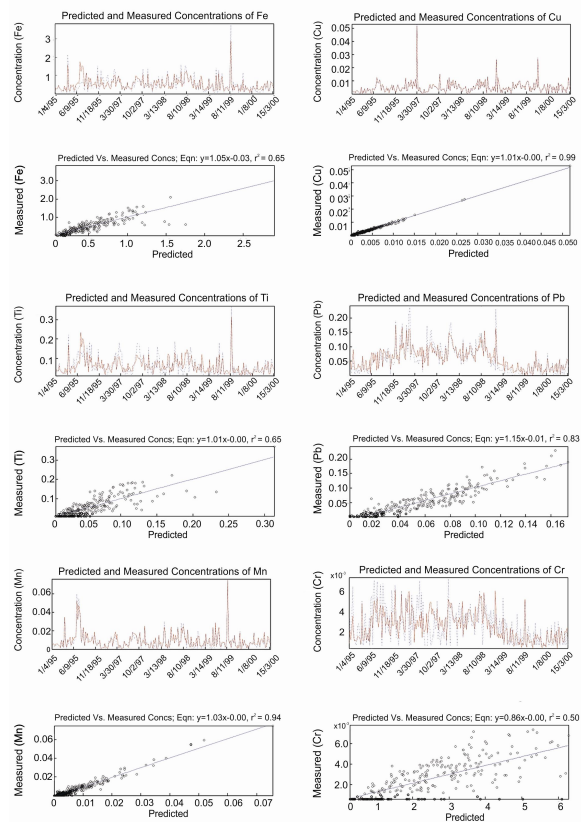


Fig. 2. Predicted and measured concentrations

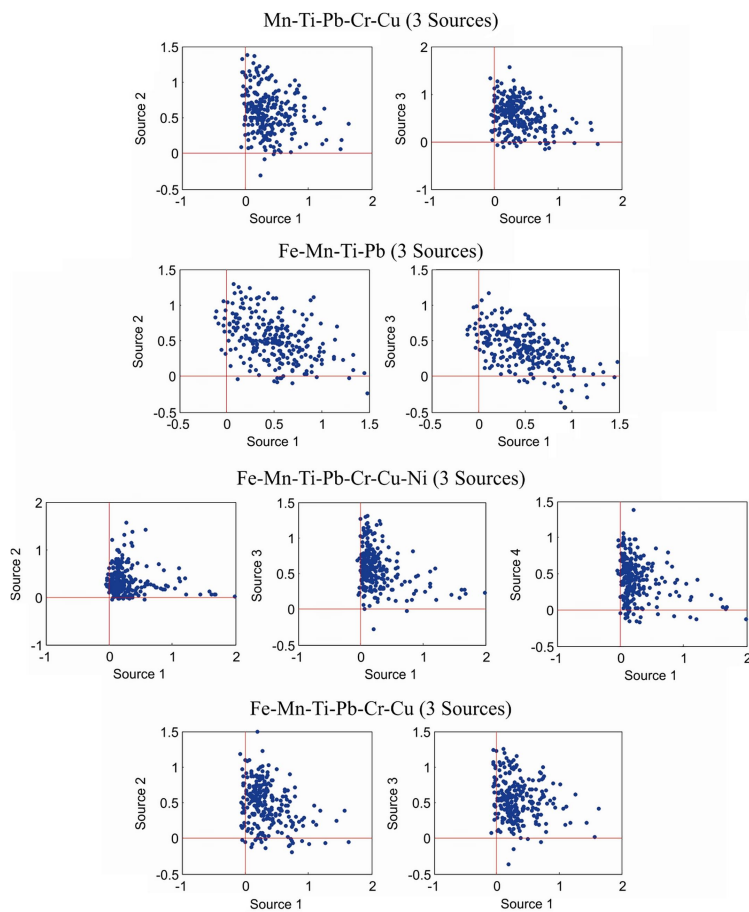


Fig. 3. Edge plots for chosen solutions that satisfy the conditions of Min S/N and Min R2

[Full Screen / Esc](#)[Printer-friendly Version](#)[Interactive Discussion](#)[Discussion Paper](#)

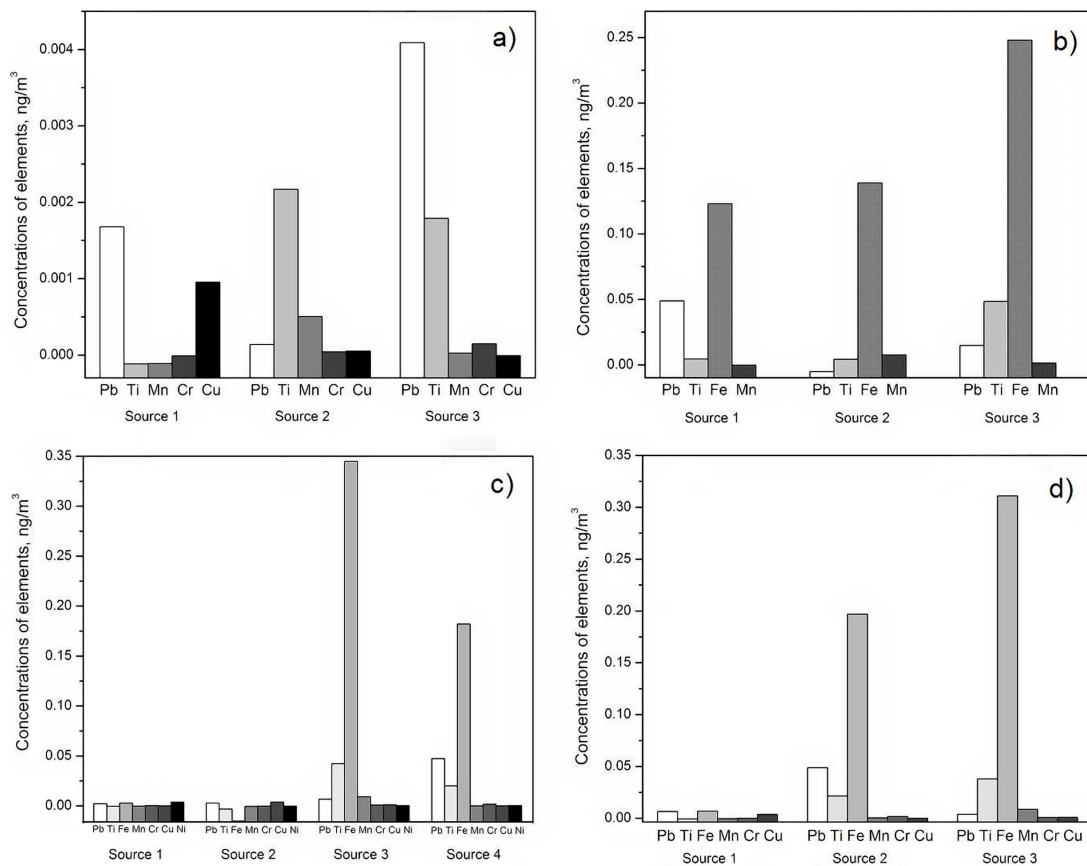


Fig. 4. Source profiles for selected solutions that are in accordance with the Unmix criteria

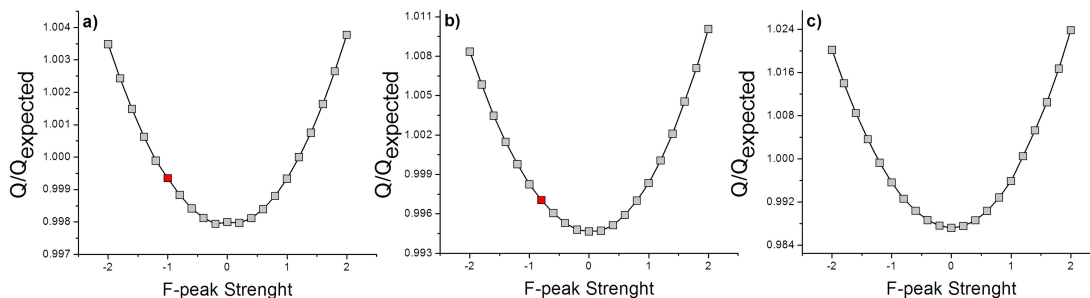


Fig. 5. F-peak analysis for three a), four b) and five c) source solutions. The red mark represents the value of F-peak Strength, at which the rotational ambiguity disappears.

[Full Screen / Esc](#)[Printer-friendly Version](#)[Interactive Discussion](#)[Discussion Paper](#)

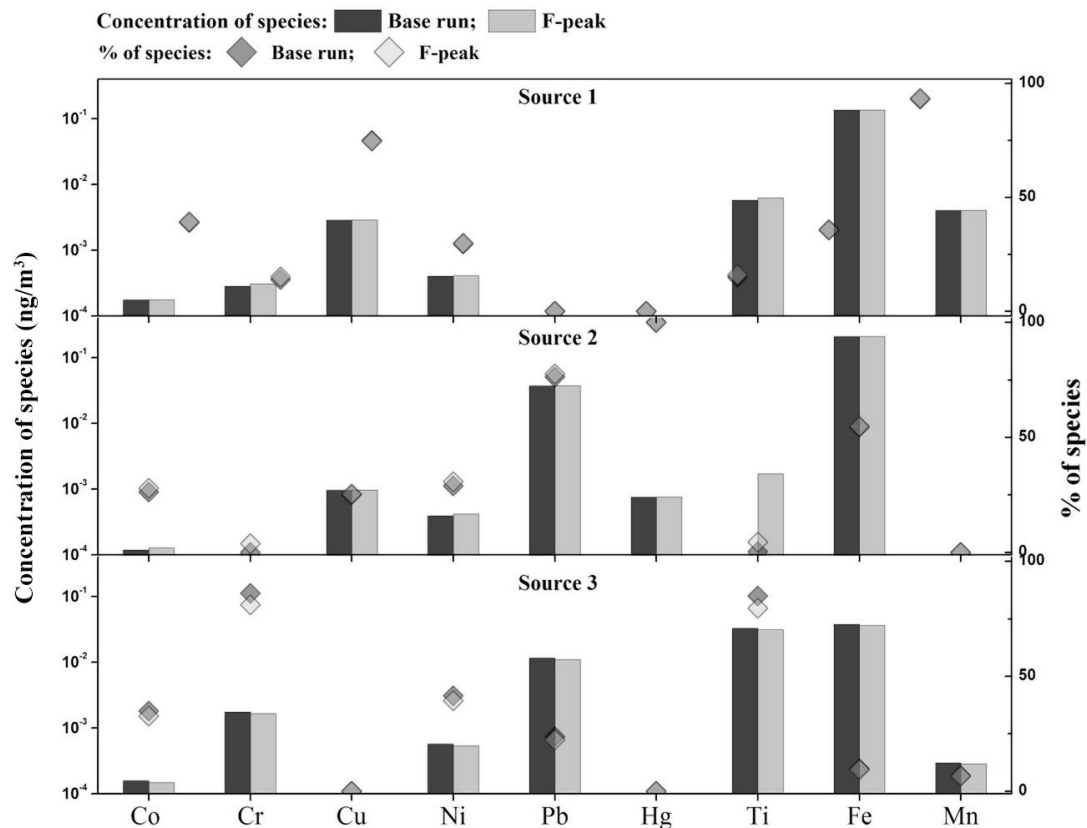


Fig. 6. Profiles in the case of three sources solutions. Comparison of base run profile and F-peak run profile with the strength of -1.2 (disappearance of rotational ambiguity).

Interactive
Comment

Full Screen / Esc

Printer-friendly Version

Interactive Discussion

Discussion Paper

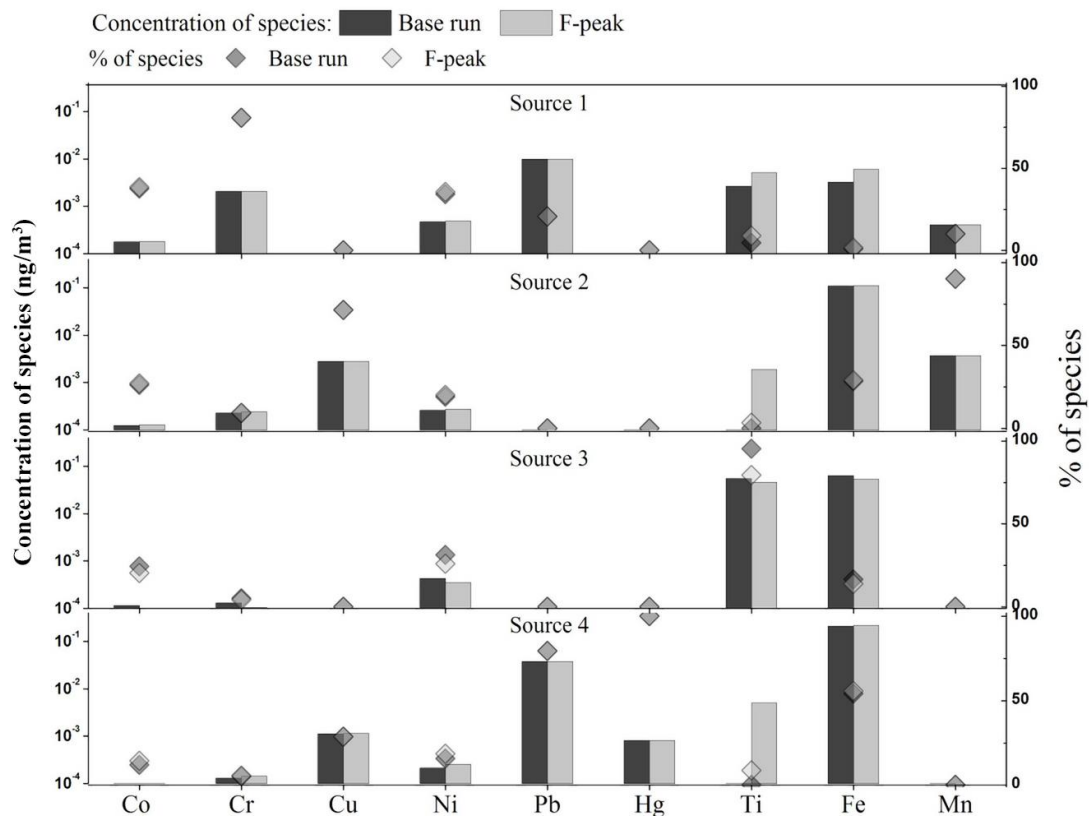


Fig. 7. Profiles in the case of three sources solutions. Comparison of base run profile and F-peak run profile with the strength of -0.8 (disappearance of rotational ambiguity).

Interactive
Comment

Full Screen / Esc

Printer-friendly Version

Interactive Discussion

Discussion Paper

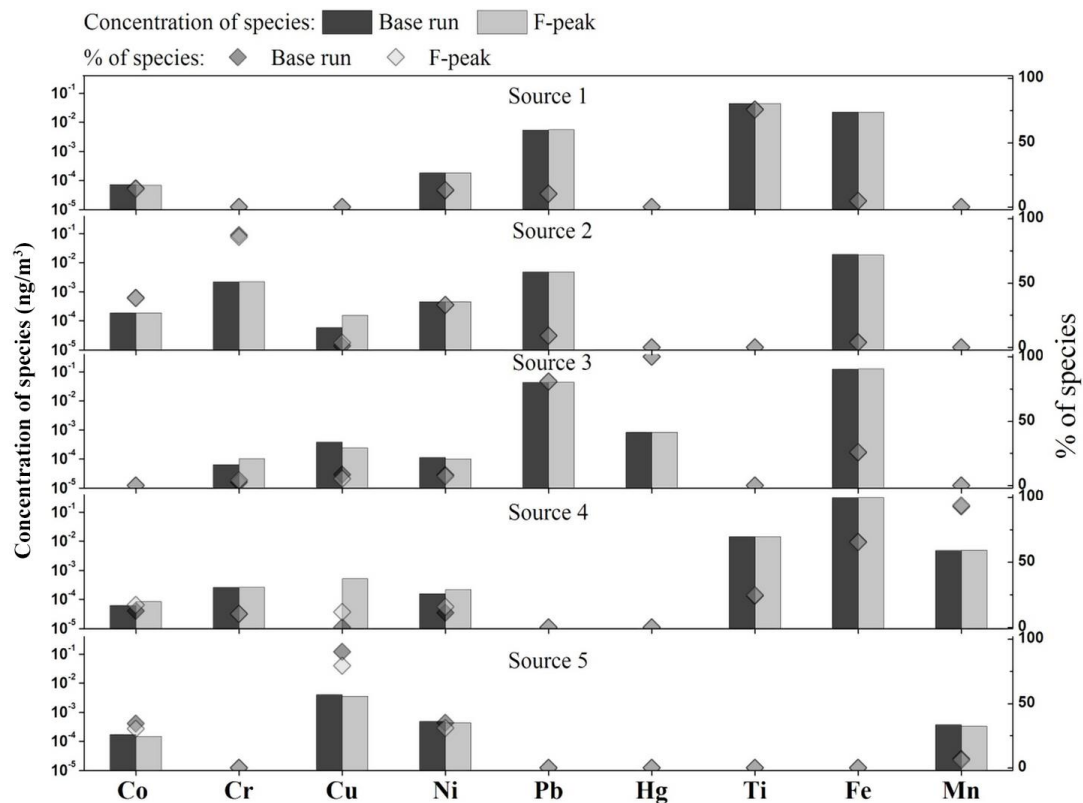


Fig. 8. Profiles in the case of three sources solutions. Comparison of base run profile and F-peak run profile with the strength of -2.0 where it can be seen that F-peak Strength does not affect the existing

Interactive
Comment

Full Screen / Esc

Printer-friendly Version

Interactive Discussion

Discussion Paper