



This discussion paper is/has been under review for the journal Atmospheric Measurement Techniques (AMT). Please refer to the corresponding final paper in AMT if available.

# Validation of SCIAMACHY HDO/H<sub>2</sub>O measurements using the TCCON and NDACC-MUSICA networks

R. A. Scheepmaker<sup>1</sup>, C. Frankenberg<sup>2</sup>, N. M. Deutscher<sup>3,4</sup>, M. Schneider<sup>5,6</sup>, S. Barthlott<sup>5</sup>, T. Blumenstock<sup>5</sup>, O. E. Garcia<sup>6</sup>, F. Hase<sup>5</sup>, N. Jones<sup>4</sup>, E. Mahieu<sup>7</sup>, J. Notholt<sup>3</sup>, V. Velazco<sup>4</sup>, J. Landgraf<sup>1</sup>, and I. Aben<sup>1</sup>

<sup>1</sup>SRON Netherlands Institute for Space Research, Utrecht, the Netherlands

<sup>2</sup>Jet Propulsion Laboratory (JPL), California Institute of Technology, Pasadena, CA, USA

<sup>3</sup>Institute for Environmental Physics, University of Bremen, Bremen, Germany

<sup>4</sup>Centre for Atmospheric Chemistry, University of Wollongong, Wollongong, Australia

<sup>5</sup>Karlsruhe Institute of Technology (KIT), Institute for Meteorology and Climate Research (IMK-ASF), Karlsruhe, Germany

<sup>6</sup>Izaña Atmospheric Research Centre (IARC), Agencia Estatal de Meteorología (AEMET), Santa Cruz de Tenerife, Spain

<sup>7</sup>Institute of Astrophysics and Geophysics, University of Liège, Liège, Belgium

## Validation of SCIAMACHY HDO/H<sub>2</sub>O measurements

R. A. Scheepmaker et al.

Title Page

Abstract

Introduction

Conclusions

References

Tables

Figures



Back

Close

Full Screen / Esc

Printer-friendly Version

Interactive Discussion



Received: 20 October 2014 – Accepted: 4 November 2014 – Published: 27 November 2014

Correspondence to: R. A. Scheepmaker (r.a.scheepmaker@sron.nl)

Published by Copernicus Publications on behalf of the European Geosciences Union.

**AMTD**

7, 11799–11851, 2014

**Validation of  
SCIAMACHY  
HDO/H<sub>2</sub>O  
measurements**

R. A. Scheepmaker et al.

Title Page

Abstract

Introduction

Conclusions

References

Tables

Figures



Back

Close

Full Screen / Esc

Printer-friendly Version

Interactive Discussion





is also detected by SCIAMACHY. This asymmetry points to a transition in the source region temperature or location of the water vapor, and shows the added information that HDO/H<sub>2</sub>O measurements provide, if used in combination with variations in humidity.

## 1 Introduction

The hydrological cycle plays a key role in the uncertainty of climate change. More specifically, water vapor plays an important role, since it is the strongest natural greenhouse gas. Water vapor is involved in positive feedback mechanisms (Soden et al., 2005; Randall et al., 2007) as well as in cloud formation processes of which the feedback mechanisms are still poorly understood (Boucher et al., 2013). Observations of water vapor isotopologues, such as HDO, can be used to improve our understanding, as phase changes leave distinct isotopic signatures in the water vapor (Dansgaard, 1964; Craig and Gordon, 1965). Improving global general circulation models (GCMs) to correctly capture these signatures will lead to a better representation of the many interacting processes that control tropospheric humidity (Jouzel et al., 1987), which will eventually lead to more robust climate projections.

Global satellite measurements, as well as ground-based Fourier Transform Spectrometer (FTS) measurements of HDO have become available in recent years. The measurements of HDO are normally expressed as a ratio of the HDO abundance to the abundance of the main isotopologue H<sub>2</sub><sup>16</sup>O (from here on referred to as H<sub>2</sub>O). We use the standard “delta-notation” for the fractionation of column-averaged HDO relative to Vienna Standard Mean Ocean Water (VSMOW):

$$\overline{\delta D} = \left( \frac{\text{VCD}(\text{HDO})/\text{VCD}(\text{H}_2\text{O})}{R_s} - 1 \right) \times 1000\text{‰}, \quad (1)$$

in which VCD stands for the Vertical Column Density and  $R_s = 3.1152 \times 10^{-4}$  is the HDO abundance of VSMOW (Craig, 1961). The bar in the notation  $\overline{\delta D}$  indicates that

## Validation of SCIAMACHY HDO/H<sub>2</sub>O measurements

R. A. Scheepmaker et al.

Title Page

Abstract

Introduction

Conclusions

References

Tables

Figures

◀

▶

◀

▶

Back

Close

Full Screen / Esc

Printer-friendly Version

Interactive Discussion



it represents a column-averaged value of  $\delta D$ . In the remainder of this work, however, the column averaging is always implied and we will simply use the notation  $\delta D$ .

Certain measurements directly retrieve  $\delta D$ , as well as the separate total columns HDO and H<sub>2</sub>O, while other measurements retrieve HDO and H<sub>2</sub>O separately, and calculate  $\delta D$  a posteriori. The first satellite retrievals of HDO (and a posteriori calculated  $\delta D$ ) were taken by the Interferometric Monitor for Greenhouse gases (IMG, Zakharov et al., 2004), followed by the SCanning Imaging Absorption SpectroMeter for Atmospheric CHartography (SCIAMACHY, Frankenberg et al., 2009). The first direct retrievals of  $\delta D$  were taken by the Thermal Emission Spectrometer (TES, Worden et al., 2007), followed by the Infrared Atmospheric Sounding Interferometer (IASI, Herbin et al., 2009; Schneider and Hase, 2011; Lacour et al., 2012; Wiegeler et al., 2014). From the ground, very precise measurements of atmospheric HDO are obtained with FTS instruments, organized in networks such as the Total Carbon Column Observing Network (TCCON, Wunch et al., 2011, retrieval of HDO and H<sub>2</sub>O among other trace gases) and the Network for Detection of Atmospheric Composition Change (NDACC, formerly the Network for Detection of Stratospheric Change (NDSC), Kurylo and Solomon, 1990, retrieval of  $\delta D$ , HDO and H<sub>2</sub>O among other trace gases). These different observations greatly complement each other, as the satellite measurements have near global coverage but at relatively low precision and accuracy, while the FTS measurements have higher precision and accuracy, but only for about 20–30 locations (and often less for older periods of coinciding satellite measurements). First comparisons between measurements of the ratio HDO/H<sub>2</sub>O in the middle-to-lower troposphere and GCMs have been performed, and show the great potential for long time series of tropospheric HDO/H<sub>2</sub>O ratio measurements to help in the improvement of the models and to gain a better understanding of the hydrological cycle (Risi et al., 2010; Yoshimura et al., 2011; Risi et al., 2012b, a).

With new satellite HDO datasets available, such as from the Greenhouse gases Observing Satellite (GOSAT, Frankenberg et al., 2013; Boesch et al., 2013), or currently being developed, such as from the Tropospheric Monitoring Instrument (TROPOMI,

**Validation of  
SCIAMACHY  
HDO/H<sub>2</sub>O  
measurements**

R. A. Scheepmaker et al.

Title Page

Abstract

Introduction

Conclusions

References

Tables

Figures



Back

Close

Full Screen / Esc

Printer-friendly Version

Interactive Discussion



**Validation of  
SCIAMACHY  
HDO/H<sub>2</sub>O  
measurements**

R. A. Scheepmaker et al.

[Title Page](#)[Abstract](#)[Introduction](#)[Conclusions](#)[References](#)[Tables](#)[Figures](#)[◀](#)[▶](#)[◀](#)[▶](#)[Back](#)[Close](#)[Full Screen / Esc](#)[Printer-friendly Version](#)[Interactive Discussion](#)

Veefkind et al., 2012), long and global time series of tropospheric  $\delta D$  are becoming a reality. It is crucial, though, that these datasets are properly validated to ensure consistency and intercomparability and to better identify their potential advantages and shortcomings. In this respect it is also important to demonstrate that  $\delta D$  adds information that is not contained in H<sub>2</sub>O measurements alone, and that the satellite datasets are capable of adding this information. A clear example of such activities is the project MUSICA (Multi-Platform remote Sensing of Isotopologues for investigating the Cycle of Atmospheric water), which consists of a ground-based (NDACC) and a space-based (IASI) remote sensing component and aims at providing quasi-global and homogeneous tropospheric H<sub>2</sub>O and  $\delta D$  data (Schneider et al., 2012). Recent MUSICA efforts include extensive theoretical data characterisation, continuous in situ measurements, aircraft campaigns and comparisons between ground- and space-based data (Schneider et al., 2014; Wiegele et al., 2014).

Here, we present an updated version of the SCIAMACHY  $\delta D$  dataset. The European Space Agency's Environmental Research Satellite (ENVISAT) mission, with the SCIAMACHY instrument on board, ended 8 April 2012. The original SCIAMACHY  $\delta D$  dataset, however, covers the years 2003–2005 (Frankenberg et al., 2009). The next available global  $\delta D$  dataset, with a high sensitivity in the lower troposphere, is from GOSAT, which started measurements in 2009 (Frankenberg et al., 2013; Boesch et al., 2013). As a first step in our effort to acquire longer and overlapping time series of  $\delta D$ , including a better data characterisation, we have expanded the SCIAMACHY  $\delta D$  time series with two additional years to cover the period 2003–2007. Although this time series is not long enough to reach overlap with GOSAT, it is long enough to allow for sufficient measurements coinciding with data from ground-based FTS stations to perform a first validation and to study if the measurements of HDO add information to the measurements of H<sub>2</sub>O alone. Assuming the ground-based FTS measurements remain consistent, they could yield a transfer between SCIAMACHY and GOSAT.

The updated SCIAMACHY  $\delta D$  dataset is introduced in Sect. 2. In Sect. 3 we describe the TCCON and NDACC ground-based FTS datasets that we use as the baseline for

**Validation of  
SCIAMACHY  
HDO/H<sub>2</sub>O  
measurements**

R. A. Scheepmaker et al.

Title Page

Abstract

Introduction

Conclusions

References

Tables

Figures

◀

▶

◀

▶

Back

Close

Full Screen / Esc

Printer-friendly Version

Interactive Discussion



our validation study. The spatial and temporal co-location algorithm is explained in Sect. 4. In Sect. 5 we present time series of the differences between the SCIAMACHY and ground-based  $\delta D$  measurements and we discuss the bias, standard deviation and other statistics. Mean seasonalities in  $\delta D$ , the relationship between  $\delta D$  and humidity and the added information of  $\delta D$  are discussed in Sect. 6. We provide a summarizing discussion and the conclusions of our work in Sect. 7.

## 2 SCIAMACHY HDO/H<sub>2</sub>O data

### 2.1 Retrieval algorithm description

The SCIAMACHY HDO/H<sub>2</sub>O dataset and its retrieval algorithm were first described in Frankenberg et al. (2009). Scheepmaker et al. (2013) further improved the original dataset and incorporated updated water spectroscopy. The retrieval is based on nadir short-wave infrared (SWIR) spectra in the 2.3  $\mu\text{m}$  range (channel 8 of SCIAMACHY). In a microwindow ranging from 4212 to 4248  $\text{cm}^{-1}$  (2354 to 2374 nm) the total vertical columns of the species H<sub>2</sub>O, HDO, H<sub>2</sub><sup>18</sup>O, CO and CH<sub>4</sub> are fitted simultaneously. The retrieval approach follows Rodgers (2000) and uses an Iterative Maximum A-Posteriori (IMAP) algorithm, similar to the SCIAMACHY CH<sub>4</sub> retrievals (Frankenberg et al., 2005, 2011). No atmospheric scattering or clouds are taken into account, which means that we need to filter for clouds using a posteriori filter criteria (described below). Since the final product consists of the ratio of the retrieved total columns of HDO and H<sub>2</sub>O, certain light-path modifications due to scattering and remaining instrumental effects that modify the HDO and H<sub>2</sub>O columns in similar ways are expected to cancel out (Boesch et al., 2013). SCIAMACHY observes backscattered sunlight that has passed through the atmosphere at least twice, which results in a high sensitivity to water vapor in the lower troposphere where the concentration is highest. The spatial footprint of a single measurement is 120 km  $\times$  30 km, with a local overpass time of 10 a.m. at the equator (mean local solar time).

**Validation of  
SCIAMACHY  
HDO/H<sub>2</sub>O  
measurements**

R. A. Scheepmaker et al.

Title Page

Abstract

Introduction

Conclusions

References

Tables

Figures

◀

▶

◀

▶

Back

Close

Full Screen / Esc

Printer-friendly Version

Interactive Discussion



As mentioned earlier, the values for  $\delta D$  are calculated a posteriori from the retrieved HDO and H<sub>2</sub>O columns. Although the output of the retrieval consists of total HDO and H<sub>2</sub>O columns, the algorithm assumes five retrieval layers (equidistant in pressure), of which only the bottom layer is used to fit the partial column density. Measured variations in the HDO and H<sub>2</sub>O concentrations higher in the atmosphere (where their concentration is low) will be ascribed to the lowest layer. This so-called “bottom-scaling” approach assures that the sensitivity to real changes in atmospheric HDO and H<sub>2</sub>O are comparable in the lower troposphere. We will show this in more detail in terms of the total column averaging kernels in Sect. 2.3 below, where we also show the sensitivity to variations in the choice of retrieval layers. Differences between the HDO and H<sub>2</sub>O retrieval sensitivities at higher layers, however, as well as cross-dependencies between HDO and H<sub>2</sub>O (e.g. how actual atmospheric H<sub>2</sub>O affects retrieved HDO and vice versa) could introduce issues in the derived  $\delta D$ , if not properly corrected for by use of the full averaging kernels (Schneider et al., 2012). Unfortunately, full averaging kernels (including the cross-correlations) are not accessible in the current retrieval setup. It is therefore possible that the derived  $\delta D$  not only reflects actual atmospheric  $\delta D$ , but partly also actual atmospheric H<sub>2</sub>O. Besides these cross-dependency effects, which act on a layer-by-layer basis, we also expect some effects from taking column-averaged values. For example, we could observe some variability in column-averaged  $\delta D$ , even if the vertical distribution of  $\delta D$  were to remain constant, due to variability in the vertical distribution of H<sub>2</sub>O. These caveats have to be considered throughout this work. These caveats also apply to the TCCON data, that will be described in Sect. 3, but not to the MUSICA data (which have been corrected for cross-dependencies using the full averaging kernels).

## 2.2 Updated data product

The new HDO/H<sub>2</sub>O product, from here on referred to as IMAP v2.0, has been updated with respect to the original product (IMAP v1.0, including the updates described in Scheepmaker et al., 2013). First of all, we have used consolidated level 1b files from



**Validation of  
SCIAMACHY  
HDO/H<sub>2</sub>O  
measurements**

R. A. Scheepmaker et al.

Title Page

Abstract

Introduction

Conclusions

References

Tables

Figures

◀

▶

◀

▶

Back

Close

Full Screen / Esc

Printer-friendly Version

Interactive Discussion



the Instrument Processing Facility version 7.04-W. Compared to the previous version 7.03-U, the updated files incorporate improved auxiliary files, fixing incorrect in-flight calibration information. The auxiliary information is used as input in the *nadc\_tools* instrument calibration software package, developed at SRON<sup>1</sup>, which was also updated

with some minor bug fixes. The *nadc\_tools* package is used for dark current corrections of the data (among other calibrations).

The output format of the HDO/H<sub>2</sub>O product has been changed to the more user-friendly netCDF4 format and the filter criteria have been updated. Measurements that satisfy the following criteria are deemed suitable for further study and have received a quality flag (QF) of 1:

- $VCD_{H_2O}/VCD_{H_2O,apriori} > 0.7$
- $0.9 < VCD_{CH_4}/VCD_{CH_4,apriori} < 1.1$
- No. of iterations  $< 5$
- Residual RMS of the spectral fit  $< 5\%$

The first two criteria act as a simple cloud filter. The subscript “apriori” refers to the vertical column densities derived from the modelled a priori input profiles from the European Centre for Medium-range Weather Forecasts (ECMWF, for H<sub>2</sub>O) or the Chemistry Transport Model TM4 (for CH<sub>4</sub> (Meirink et al., 2006)). If more strict (cloud) filtering is preferred, we suggest users add the following criterion:

- $0.9 < VCD_{H_2O}/VCD_{H_2O,apriori} < 1.1$

For a description of the other fields included in the netCDF files we refer the reader to the Product Specification Document (PSD) that is provided with the dataset. The SCIAMACHY HDO/H<sub>2</sub>O ratio product can be requested via [www.sciamachy.org](http://www.sciamachy.org).

<sup>1</sup><http://www.sron.nl/~richardh/SciADC/>

## Validation of SCIAMACHY HDO/H<sub>2</sub>O measurements

R. A. Scheepmaker et al.

Title Page

Abstract

Introduction

Conclusions

References

Tables

Figures

◀

▶

◀

▶

Back

Close

Full Screen / Esc

Printer-friendly Version

Interactive Discussion



The extension of the data product beyond the original 2003–2005 time period is complicated due to various instrument issues with the channel 8 detector (Gloude-  
mans et al., 2005). First of all, there is a growing ice layer on the detector window,  
affecting the instrument spectral line shape (ISLS) in a variable manner. Secondly, the  
detectors, particularly those used for the SCIAMACHY channels 6+ to 8, are degrad-  
ing with time. The indium-gallium-arsenide (InGaAs, EPITAXX, New Jersey) detector  
material of channels 6+ to 8 is doped with higher amounts of indium, which leads to  
an increased level of infra-red sensitivity, but also to a higher dark current and suscep-  
tibility to radiation damage (Kleipool et al., 2007). This radiation damage can manifest  
itself in different ways. We see a general increase with time in the amount of pixels  
that suffer from higher noise levels, and in the occurrence of dark currents that start to  
alternate between different modes (i.e. random telegraph signal, or RTS, resulting in  
bad pixels). Some pixels show a combination of higher noise and RTS. Other pixels  
become completely unresponsive and are labeled dead. These degradation issues are  
especially problematic for channel 8, due to the intrinsic low signal-to-noise ratio in this  
channel.

Nevertheless, we have extended the  $\delta D$  data product through 2007 by using the  
same fixed dead/bad pixel mask as used for 2003–2005, and a description of the ISLS  
that accounts for variability due to the ice layer between 2003–2007 (both taken from  
Frankenberg et al., 2009). Extension of the dataset to the end of the ENVISAT mission  
in 2012 would require a detailed analysis of the detector pixel degradation and ice  
layer in our retrieval window, which is not within the scope of the current validation  
study. By extending the dataset through 2007, however, we remain fairly consistent  
with respect to the original dataset, while simultaneously creating enough overlap with  
ground-based FTS data to allow for a validation. This validated dataset can serve as  
the baseline for more elaborate future extensions.

In Fig. 1 we show a world map of the 2003–2007 averaged  $\delta D$  distribution (top left,  
QF = 1). The new v2.0 dataset shows the same global  $\delta D$  patterns as the previous  
dataset: a latitudinal gradient with the highest values at the equator and decreasing

## Validation of SCIAMACHY HDO/H<sub>2</sub>O measurements

R. A. Scheepmaker et al.

Title Page

Abstract

Introduction

Conclusions

References

Tables

Figures



Back

Close

Full Screen / Esc

Printer-friendly Version

Interactive Discussion



values towards the poles, a continental gradient with  $\delta D$  decreasing further inland (best visible in North America) and an altitude gradient, with  $\delta D$  decreasing over high mountain ranges, such as the South American Andes or the Himalayas. A few small-scale features are more pronounced in IMAP v2.0, e.g. the depletion patterns above Saharian mountain ranges, such as the Tibesti Mountains in northern Chad and the Hoggar Mountains in Algeria. Also Lake Victoria in Tropical Africa shows a clear depletion pattern amidst the enhanced  $\delta D$  values of the surrounding rain forest (which are due to non-fractionating transpiration of the vegetation). Note that the measurements above oceans rely on light reflected off low-level clouds or sunglint, as the ocean itself is too dark in the near-infrared.

In the bottom-left panel of Fig. 1 we show the mean single sounding error. The standard error in the mean  $\delta D$  (not shown), decreases with the number of measurement ( $N$ ) as  $1/\sqrt{N}$  and is only a few per mil for the 2003–2007 average. The mean single sounding error, however, is close to 80‰ for most areas, and increases to  $\sim 100\%$  above very high and arid regions (such as the Tibetan Plateau and Greenland) or towards very high latitudes, where the signal becomes very low due to low solar zenith angles. Similar to this spatial variability, there is also a temporal variability in the mean single sounding error. Above a fixed location, the driest time periods will have the lowest H<sub>2</sub>O and HDO signals, and therefore the largest single sounding errors. This shows that one has to be careful when applying noise estimates in the filtering or weighting of the data, as spatial or temporal sampling biases against the lowest HDO signals (highest depletions) might be introduced. Therefore, we use non-weighted averages and do not use any error estimates in the filtering of the data.

### 2.3 Dependency on prior assumptions

The retrieval algorithm uses variable a priori information from ECMWF for the profiles of H<sub>2</sub>O. The a priori HDO profile is derived from the H<sub>2</sub>O profile by assuming a depletion of  $\delta D = -100\%$  at the lowest layer, increasing to  $\delta D = -500\%$  at the highest layer. Even though the prior information is variable, the left-hand panel of Fig. 2 shows that

## Validation of SCIAMACHY HDO/H<sub>2</sub>O measurements

R. A. Scheepmaker et al.

Title Page

Abstract

Introduction

Conclusions

References

Tables

Figures



Back

Close

Full Screen / Esc

Printer-friendly Version

Interactive Discussion

the prior column-averaged  $\delta D$  is roughly constant at  $-150\%$ . The small variations in  $\delta D$  can be explained by small variations in the scale height of H<sub>2</sub>O. A larger scale height, for example, gives more weight to the higher, and therefore more depleted, HDO layer, resulting in a slightly lower prior column-averaged  $\delta D$ . This also illustrates the issue mentioned in Sect. 2.1 of how variations in the vertical distribution of H<sub>2</sub>O can affect column-averaged  $\delta D$ , even though the  $\delta D$  profile remains the same. The right-hand panel of Fig. 2 shows how the prior  $\delta D$  has been changed by the retrieval. The retrieval of H<sub>2</sub>O and HDO introduces strong variations in the a posteriori calculated  $\delta D$ , which are uncorrelated to the prior information. This shows that the variations in a posteriori  $\delta D$  contain new information and are not simply the result of variations in the a priori H<sub>2</sub>O in combination with the fixed depletion profile. Additionally, we have tested that the a posteriori calculated  $\delta D$  is not very sensitive to the choice of a priori  $\delta D$  depletion profile, by assuming a constant HDO profile with zero depletion. This resulted in some additional scatter in the a posteriori  $\delta D$ , but without introducing any bias with respect to the standard retrieval (not shown).

Figure 3 (left panel) shows the impact in terms of total column averaging kernels of a bottom-scaling retrieval relative to a profile-scaling retrieval. A profile-scaling retrieval keeps the shape of the a priori H<sub>2</sub>O and HDO profiles constant by fitting a single scaling factor that applies to all five layers. This typically results in an H<sub>2</sub>O column averaging kernel being  $> 1.0$  in the bottom layer, meaning that the retrieval is too sensitive to real atmospheric H<sub>2</sub>O variations in this layer. The bottom-scaling retrieval, on the other hand, ascribes all measured H<sub>2</sub>O variations to the bottom layer, and is therefore perfectly sensitive to real atmospheric H<sub>2</sub>O variations in this layer (i.e. the averaging kernel is 1.0 in this layer). Since HDO is a much weaker absorber than H<sub>2</sub>O, the HDO column averaging kernels are practically equal for both scaling approaches and show almost no variation with altitude.

The right-hand side panel of Fig. 3 shows the impact of a profile-scaling retrieval relative to a bottom-scaling retrieval in terms of the a posteriori derived  $\delta D$ . Overall, the retrieval is quite robust against this change in the layering setup: the highest density of

**Validation of  
SCIAMACHY  
HDO/H<sub>2</sub>O  
measurements**

R. A. Scheepmaker et al.

Title Page

Abstract

Introduction

Conclusions

References

Tables

Figures



Back

Close

Full Screen / Esc

Printer-friendly Version

Interactive Discussion



datapoints is found on the one-to-one line. The few outliers with very large shifts in  $\delta D$  are scenes where both retrieval setups retrieve H<sub>2</sub>O columns lower than the a priori column (not shown). The  $> 1.0$  averaging kernel for the lowest layer of the profile-scaling setup explains why this approach leads to an even lower H<sub>2</sub>O column compared to bottom-scaling (while the HDO columns remain similar). This translates into a positive shift in the ratio HDO/H<sub>2</sub>O. This is another example of how differences in the retrieval sensitivity of HDO and H<sub>2</sub>O can impact the derived  $\delta D$ . By using the bottom-scaling approach in our retrieval algorithm we limit this impact, since the averaging kernels for HDO and H<sub>2</sub>O are very similar in the bottom layer where most of the water vapor resides.

## 2.4 Offset correction

An offset in the humidity total column, i.e. the total column that would be measured under perfectly dry conditions, will lead to a humidity-dependent shift in  $\delta D$  (since a constant offset has a relatively larger impact on smaller total columns). Multiplicative correction factors for the H<sub>2</sub>O and HDO columns, on the other hand, will lead to a constant shift in  $\delta D$ , which is easier to correct. Correcting for an offset in the H<sub>2</sub>O and HDO columns will have a similar impact on the dataset as applying a noise filter (namely larger shifts in  $\delta D$  for drier areas), except that it will not introduce sampling biases, since all measurements are corrected, and none are rejected.

Since the existence of humidity-dependent biases can potentially hamper the correct use of the  $\delta D$  dataset, we have tested if the SCIAMACHY  $\delta D$  retrievals are affected by offsets in the H<sub>2</sub>O and HDO columns, and what the impact of a correction for these offsets would be on the validation of  $\delta D$ . Frankenberg et al. (2013) found offsets in the H<sub>2</sub>O and HDO total columns from GOSAT, significantly affecting the  $\delta D$  retrievals. Similar to their method for estimating the offset above Antarctica, we estimate the offset by selecting all 2003–2007 data in a box above Greenland (60–90° latitude, –15 to –60° longitude). Like Antarctica, Greenland is a high-altitude region at high latitude, which results in very dry total columns. In Fig. 4 we show a two dimensional density

## Validation of SCIAMACHY HDO/H<sub>2</sub>O measurements

R. A. Scheepmaker et al.

Title Page

Abstract

Introduction

Conclusions

References

Tables

Figures

◀

▶

◀

▶

Back

Close

Full Screen / Esc

Printer-friendly Version

Interactive Discussion



distribution of the retrieved H<sub>2</sub>O and HDO total columns as a function of the a priori H<sub>2</sub>O total column from ECMWF. The HDO total column has already been divided by the VSMOW abundance of  $3.1153 \times 10^{-4}$ . The assumption is that both the H<sub>2</sub>O and HDO columns should be zero at an a priori H<sub>2</sub>O column of zero (even though at nonzero columns the ratio between the H<sub>2</sub>O and HDO columns can be variable). The data have been filtered according to the QF = 1 criteria mentioned above, except for the criterion  $VCD_{H_2O}/VCD_{H_2O,apriori} > 0.7$ , as this would lead to a bias against the driest H<sub>2</sub>O columns while the corresponding HDO column would not be affected. We performed a linear regression between  $0-0.8 \times 10^{22}$  molec cm<sup>-2</sup> and define the offset as the Y-intercept of this regression. This gives us H<sub>2</sub>O and HDO offsets of  $6.8 \times 10^{20}$  and  $-5.7 \times 10^{20}$  molec cm<sup>-2</sup>, respectively. Subtracting these offsets from the H<sub>2</sub>O and HDO columns before we calculate  $\delta D$  gives an offset corrected  $\delta D$ , of which the world map is shown in the top-right of Fig. 1. The bottom-right panel shows the difference with the uncorrected world map. It clearly shows that, as expected, the offset correction has the largest impact on the driest regions, such as the Atacama desert and the Tibetan plateau. In these regions the offset correction can induce shifts in the 2003–2007 averaged  $\delta D$  of up to  $\sim 120\%$ , while the impact at the more temperate regions is  $\sim 40\%$ . As a robustness test we have also determined the offsets using data above Antarctica. This resulted in slightly larger offsets ( $9.5 \times 10^{20}$  molec cm<sup>-2</sup> for H<sub>2</sub>O and  $-2.4 \times 10^{20}$  molec cm<sup>-2</sup> for HDO) but no significant difference in the impact on  $\delta D$ .

It is difficult to validate the impact of the offset correction for the driest areas, as either no FTS stations exist in these regions, or the stations have a very sparse sampling throughout the year and limited SCIAMACHY coverage due to their high latitudes and resulting high SZAs (such as for the dry high (ant-)arctic stations at Eureka, Ny Ålesund and Arrival Heights). The corrected values of  $\delta D$  for these areas, however, are more consistent with the simulations from isotope-enabled general circulation models such as IsoGSM (Yoshimura et al., 2011) and LMDZ (Risi et al., 2012b), suggesting that the world map of the offset corrected dataset is more realistic. Since it is expected that the

## Validation of SCIAMACHY HDO/H<sub>2</sub>O measurements

R. A. Scheepmaker et al.

Title Page

Abstract

Introduction

Conclusions

References

Tables

Figures

◀

▶

◀

▶

Back

Close

Full Screen / Esc

Printer-friendly Version

Interactive Discussion



offset correction has a relatively larger impact on the driest months in the regions where ground-based FTS data does exist, we consider both the non-corrected, and the offset corrected SCIAMACHY data in the remainder of this validation study, and we test if the offset correction leads to a better dataset. In Sect. 7 we come to a recommendation on which dataset to use.

### 3 Ground-based FTS data

Our validation dataset is based on ground-based FTS stations from two different networks with different retrieval approaches: TCCON and NDACC. The NDACC data are produced within the framework of the MUSICA project. Six stations from both networks were selected, with data available between 2003 and 2007. Two stations, Bremen and Lauder, are part of both networks, albeit with different temporal coverage. Below we describe the TCCON and MUSICA datasets separately.

#### 3.1 TCCON

The TCCON network consists of about 20 operational ground-based FTS stations that use direct solar spectra in the near-infrared to measure the column-averaged abundances of various atmospheric constituents, including H<sub>2</sub>O and HDO. We have used version GGG2012 of the TCCON data from the stations at Ny Ålesund (Spitsbergen), Bremen (Germany), Park Falls (USA), Pasadena (Jet Propulsion Laboratory or JPL, USA), Darwin (Australia) and Lauder (New Zealand) (also see Table 1). The TCCON measurements and their calibrations using aircraft profiles are described in detail by Wunch et al. (2011) and, more specific to  $\delta D$ , by Boesch et al. (2013). A characterisation of a posteriori calculated  $\delta D$  from TCCON-like measurements is presented by Rokotyan et al. (2014). The HDO and H<sub>2</sub>O columns are independently retrieved in the near-infrared wavelength region by scaling a priori profiles of the Volume Mixing Ratio (VMR). The a priori profiles are taken from re-analysis data from the National Cen-



## Validation of SCIAMACHY HDO/H<sub>2</sub>O measurements

R. A. Scheepmaker et al.

Title Page

Abstract

Introduction

Conclusions

References

Tables

Figures



Back

Close

Full Screen / Esc

Printer-friendly Version

Interactive Discussion



ters for Environmental Prediction (NCEP). The HDO a priori profile is inferred from the H<sub>2</sub>O profile with an H<sub>2</sub>O dependent fractionation (−40‰ at 1 % H<sub>2</sub>O VMR, decreasing to −600‰). Since the a priori profiles are highly variable and close to the true atmospheric profiles, the H<sub>2</sub>O and HDO retrieval products will be strongly correlated with the a priori. Since  $\delta D$  is not retrieved directly but calculated a posteriori, the TCCON retrievals suffer from the same caveats as mentioned in Sect. 2.1 for the SCIAMACHY retrievals, regarding the averaging kernels of H<sub>2</sub>O, HDO and their cross-dependencies.

15 15 spectral microwindows are used for H<sub>2</sub>O and 6 for HDO, of which 2 are partly overlapping with the spectral window used for the SCIAMACHY retrievals. The spectroscopic parameters used by TCCON are different from the ones used by the SCIAMACHY retrievals. For the SCIAMACHY HDO/H<sub>2</sub>O retrievals the H<sub>2</sub>O line list compiled by Scheepmaker et al. (2013) was used, while for TCCON a compilation of parameters from various sources was used, where the selection was based on the performance of the spectral fit at each absorption line (Wunch et al., 2011).

15 20 Wunch et al. (2010) have calibrated the TCCON data using aircraft profiles, from which a correction factor of 1.031 was determined for the total column H<sub>2</sub>O. All TCCON H<sub>2</sub>O columns were already divided by this factor. Since no correction factor was applied to HDO (this could not be determined from the aircraft measurements), the H<sub>2</sub>O correction would introduce a bias in the ratio HDO/H<sub>2</sub>O. We have therefore first removed the H<sub>2</sub>O correction, by multiplying the H<sub>2</sub>O columns by a factor 1.031, before deriving  $\delta D$  according to Eq. (1). This implicitly assumes that the (spectroscopic) errors that the factor corrects for are approximately similar for HDO and H<sub>2</sub>O, so that their effect cancels once the ratio is taken. We have tested that not removing the TCCON H<sub>2</sub>O correction would lead to an increase in the SCIAMACHY  $\delta D$  bias of  $\sim 30\%$ , as expected.

25 The average measurement precision of the a posteriori calculated  $\delta D$  varies between 12–20‰ for the six TCCON stations used in this study.



## 3.2 MUSICA

The ground-based component of the project MUSICA (Schneider et al., 2012) consists of several FTS stations operating within the NDACC network. From here on we refer to this dataset simply as “MUSICA”. MUSICA uses high-resolution direct-solar FTS spectra in the mid-infrared to retrieve column-averaged abundances and profiles of H<sub>2</sub>O, HDO and also  $\delta D$ . Ten spectral microwindows are used for H<sub>2</sub>O and HDO, and the spectroscopic parameters come from a combination of HITRAN 2008 (Rothman et al., 2009) and Schneider et al. (2011). Contrary to the a posteriori  $\delta D$  calculation of TC-CON, MUSICA performs a direct retrieval of  $\delta D$ . The a priori profile information for H<sub>2</sub>O is based on radiosonde measurements at different locations. The a priori  $\delta D$  profile is based on the measurements by Ehhalt (1974). For every ground station the a priori information is held constant, so all the observed variability in H<sub>2</sub>O and  $\delta D$  is due to the measured spectra. The retrieval algorithm is described in detail by Schneider et al. (2012). Schneider et al. (2014) have performed a first empirical validation of the H<sub>2</sub>O and  $\delta D$  products using aircraft profiles, from which a bias in  $\delta D$  was estimated of about 30‰ close to the surface, increasing to about 70‰ above 5 km altitude. This would translate into a high bias in the column-averaged  $\delta D$  of roughly 35‰. The measurement precision is estimated to be around 10‰.

We have used the 2012 version of the MUSICA data (column-averaged values for H<sub>2</sub>O and  $\delta D$  only) from the stations at Kiruna (Sweden), Bremen (Germany), Jungfrau-joch (Switzerland), Izaña (Tenerife, Spain), Wollongong (Australia) and Lauder (New Zealand) (also see Table 1). Since the MUSICA project uses data from the already existing NDACC network, time series for some stations go back to the mid 1990s, while the earliest TCCON data are from 2004. The MUSICA data therefore has more temporal overlap with the 2003–2007 SCIAMACHY data. The measurement frequency, however, is lower for MUSICA, which means that per overpassing SCIAMACHY measurement the number of co-located FTS measurements is also significantly lower.

### Validation of SCIAMACHY HDO/H<sub>2</sub>O measurements

R. A. Scheepmaker et al.

Title Page

Abstract

Introduction

Conclusions

References

Tables

Figures



Back

Close

Full Screen / Esc

Printer-friendly Version

Interactive Discussion



## 4 Spatial and temporal co-locating algorithm

For co-locating the SCIAMACHY data with the ground-based FTS data, we first selected all SCIAMACHY measurements within a 500 km radius of the FTS stations. The measurements were filtered according to the  $QF = 1$  criteria from Sect. 2.2, and in addition some outliers were removed by demanding:  $-600‰ < \delta D < 300‰$ . Compared to other atmospheric trace gases, the diurnal variation of water vapor can be very large. We therefore added a temporal matching criterion of  $\pm 2$  h to our co-locating algorithm. For every SCIAMACHY measurement within the 500 km radius, we take the average  $\delta D$  of all FTS measurements within a  $\pm 2$  h time window of the SCIAMACHY measurement. In Table 1 we give an overview of all the FTS stations used. The last two columns show the resulting number of SCIAMACHY measurements with at least one spatially and temporally co-located FTS measurement ( $N_{\text{scia}}$ ) and the average number of FTS measurements per co-located SCIAMACHY measurement ( $\langle N_{\text{fts}} \rangle$ ). The matched pairs of individual SCIAMACHY measurements with averaged FTS measurements form the basis for our bias determination.

## 5 Time series and bias determination

### 5.1 Time series

Figures 5 and 6 show the entire 2003–2007 time series of  $\delta D$  measurements from TCCON and MUSICA, respectively (dark grey dots and magenta curve), together with all the spatially co-located SCIAMACHY  $\delta D$  measurements (light grey dots and blue curve). To clearly show all the available data per station, no temporal constraints have been applied to the datapoints in these figures. A few stations show very sparse sampling throughout the year, either due to their high latitude and resulting high SZAs (e.g. Ny Ålesund and Kiruna), or due to their location close to oceans which have a very low surface albedo (Lauder). The MUSICA stations Jungfraujoch and Izaña are high-

### Validation of SCIAMACHY HDO/H<sub>2</sub>O measurements

R. A. Scheepmaker et al.

Title Page

Abstract

Introduction

Conclusions

References

Tables

Figures



Back

Close

Full Screen / Esc

Printer-friendly Version

Interactive Discussion



altitude stations and will therefore measure a lower column averaged  $\delta D$  as a result of  $\delta D$  decreasing with altitude (the so-called altitude effect). The co-located SCIAMACHY measurements for these high-altitude stations consist mostly of reflected sunlight from nearby lower surfaces, which results in the observed strong positive bias in  $\delta D$ .

For every station we have determined various statistics, which are printed at the top and bottom of the figures and will be explained below. These statistics are based on the spatially and temporally co-located datapoints, from the algorithm as described in Sect. 4. A summary of the statistics is given in Table 2, including the values before and after correcting for the offset.

### 5.1.1 Bias

The bias is defined as the mean of the 2003–2007 SCIAMACHY–FTS  $\delta D$  differences. Without the offset correction we find significant negative biases above all ground stations (except the mountain stations). The weighted average of the bias for all six TCCON stations and the four low-altitude MUSICA stations is  $-35 \pm 1.6\%$  and  $-69 \pm 3.9\%$ , respectively. The uncertainties denote standard errors in the mean. The station-to-station standard deviations are 30% (TCCON) and 15% (MUSICA). The offset correction introduces an average reduction of the bias of 27%, consistent with the world map that showed the impact of the offset correction in Fig. 1. After the offset correction, the average bias above the TCCON and MUSICA stations is  $-8.4 \pm 1.6\%$  and  $-42 \pm 3.9\%$ , respectively, with station-to-station standard deviations of 26% (TCCON) and 21% (MUSICA).

### 5.1.2 Standard deviation

The standard deviation of the SCIAMACHY–FTS differences is defined as  $\sigma$ , and has an average value of 115–120% for single SCIAMACHY measurements (shown in the bottom two lines of Table 2). For 30 day averages  $\sigma$  is reduced by a factor  $\sim 1.5$ –3. The offset correction does not lead to reduction of  $\sigma$ .

## Validation of SCIAMACHY HDO/H<sub>2</sub>O measurements

R. A. Scheepmaker et al.

Title Page

Abstract

Introduction

Conclusions

References

Tables

Figures



Back

Close

Full Screen / Esc

Printer-friendly Version

Interactive Discussion



**Validation of  
SCIAMACHY  
HDO/H<sub>2</sub>O  
measurements**

R. A. Scheepmaker et al.

Title Page

Abstract

Introduction

Conclusions

References

Tables

Figures



Back

Close

Full Screen / Esc

Printer-friendly Version

Interactive Discussion



The standard deviation is larger than the mean measurement noise error in SCIAMACHY  $\delta D$  (typically between 40–60‰ above the FTS stations). Partly this is explained by the measurement noise error underestimating the true error, since it is based on the measured spectrum and does not include any errors due to calibration. Also, we are not taking the statistical uncertainty of the FTS measurements into account, nor the remaining systematic effects present in the co-location window of  $\pm 2$  h and a distance  $< 500$  km. Within this window, local humidity can show strong temporal and spatial variations, leading to strong variations in  $\delta D$  and increased  $\sigma$ . We have tested that for some stations  $\sigma$  can indeed be reduced by stricter co-location criteria. However, the sample size also reduces with stricter criteria, causing that overall we do not observe a clear trend of lower biases and  $\sigma$  for more strict co-locations.

### 5.1.3 Reduced chi-square

The reduced chi-square  $\chi_v^2$  is a parameter that can be used in the comparison of two datasets, taking into account the statistical errors of the data. We use the following definition of  $\chi_v^2$ :

$$\chi_v^2 = \frac{1}{n-1} \sum_{i=1}^n \frac{[\delta D_{\text{scia},i} - \delta D_{\text{fts},i} - \text{bias}]^2}{\sigma_{\text{scia},i}^2 + \sigma_{\text{fts},i}^2}. \quad (2)$$

The summation is over all ( $n$ ) co-located measurements per station, where  $\sigma_{\text{scia}}^2$  and  $\sigma_{\text{fts}}^2$  denote the uncertainty in  $\delta D$  from SCIAMACHY and the FTS measurements, respectively (not to be confused with  $\sigma$  that denotes the standard deviation of the SCIAMACHY–FTS differences). For the TCCON data,  $\sigma_{\text{fts}}^2$  could be determined from the given uncertainties (precision) in the dry-air mole fractions of H<sub>2</sub>O and HDO. For the MUSICA data no uncertainties in total column  $\delta D$  (nor H<sub>2</sub>O and HDO) were provided, so we assumed a constant  $\sigma_{\text{fts}} = 10\%$ . The average  $\chi_v^2$  we find for TCCON and MUSICA is 3.9 and 5.0, respectively (printed in Figs. 5 and 6 and summarized in Table 2).

## Validation of SCIAMACHY HDO/H<sub>2</sub>O measurements

R. A. Scheepmaker et al.

Title Page

Abstract

Introduction

Conclusions

References

Tables

Figures



Back

Close

Full Screen / Esc

Printer-friendly Version

Interactive Discussion



Consistent with our observations of the standard deviation in Sect. 5.1.2, this shows that either additional differences are present within the co-location window (due to the variability of water vapor), or that our uncertainties are underestimated. We note that a doubling of the SCIAMACHY  $\delta D$  uncertainty would lead to  $\chi_v^2 \approx 1.1\text{--}1.4$  (meaning that with these larger uncertainties the observed spread in the differences is practically consistent with the statistical uncertainty of the measurements). Alternatively,  $\chi_v^2 \approx 1$  could be reached with adding a separate noise term with  $\sigma \approx 90\%$ , suggesting that this would be the additional variability of water vapor in the co-location window, if it was the single cause for the additional spread in the observed differences.

The Izaña station shows the highest  $\chi_v^2$  of 12, which can be explained by its location close to the Sahara (with a very high albedo), which results in many co-located SCIAMACHY measurements from above the Sahara with very small uncertainties.

Finally, the values of  $\chi_v^2$  in Table 2 show no improvement due to the offset correction.

### 5.1.4 Correlation coefficient

The last statistical parameter we show in Figs. 5 and 6 and Table 2 is the linear Pearson correlation coefficient “ $r$ ”. Before the offset correction, the average correlation coefficients for TCCON and MUSICA are 0.25 and 0.21, respectively. The offset correction has a negative impact on the correlation, reducing the average coefficients by 0.06. Again, the variability in humidity present in the co-location window could explain why the individual SCIAMACHY data are only reasonably correlated with the FTS data. The correlation improves when we take monthly averages, as we will present in Sect. 6.1.

Overall, and considering all statistical parameters, we can conclude that the uncorrected SCIAMACHY  $\delta D$  product is low biased by  $-35 \pm 30\%$  compared to TCCON and  $-69 \pm 15\%$  compared to MUSICA, where the uncertainties are the station-to-station standard deviations. Considering these averages, it seems that the bias with respect to MUSICA is larger than the bias with respect to TCCON. However, considering the individual Bremen and Lauder stations (which participate in both networks) either the reverse is true (Bremen shows a lower bias with respect to MUSICA instead of TC-

CON) or the TCCON and MUSICA biases agree within the estimated errors (Lauder). This suggests that the differences in biases between TCCON and MUSICA might be related to the differences in the location of the stations. We study this further in the next section. The offset correction reduces the bias on average by 27%, but does not lead to a reduction of  $\sigma$ , nor to an improvement of the correlation coefficient.

## 5.2 Latitudinal dependence of the bias

As mentioned above, the averaged bias with respect to MUSICA is larger than with respect to TCCON, while for the two individual stations that participate in both networks the bias with respect to MUSICA is either consistent with TCCON, or even smaller. Since the MUSICA and TCCON stations are spread across different geographical locations, this could be the result of a selection effect in combination with a latitudinal bias.

In Fig. 7 we show the bias at all the FTS stations (except the two high-altitude stations) as a function of latitude. For the two stations participating in both networks (Bremen and Lauder), the weighted average of their biases is used. The figure shows evidence for a latitudinal dependent bias, both for the offset corrected and uncorrected dataset. The bias at the higher latitudes can be up to 30 to 60% larger than at the lower latitudes. Although the offset correction leads to a larger shift in  $\delta D$  at higher latitudes, this gradient is not sufficient to remove the latitudinal dependency of the bias.

Three of the four stations at low to moderate latitudes ( $-40$  to  $+50^\circ$ ) are TCCON stations with relatively small error bars. The only MUSICA station in this latitudinal range is Wollongong which has the largest error bar on the bias. The other three MUSICA stations are at higher latitudes where the SCIAMACHY  $\delta D$  bias is larger. This explains why the weighted mean bias over all stations is smallest with respect to TCCON, even though the bias at Lauder and Bremen is either comparable or smaller with respect to MUSICA. It also shows that, in order to accurately determine a latitudinal bias of SCIAMACHY  $\delta D$  using the combination of both TCCON and MUSICA networks, more

### Validation of SCIAMACHY HDO/H<sub>2</sub>O measurements

R. A. Scheepmaker et al.

Title Page

Abstract

Introduction

Conclusions

References

Tables

Figures



Back

Close

Full Screen / Esc

Printer-friendly Version

Interactive Discussion



information on the differences between TCCON and MUSICA  $\delta D$  is necessary, including more elaborate cross-validations and their latitudinal dependencies.

## 6 Seasonality

As a result of Rayleigh distillation (i.e. the preferential condensation of the heavier isotopologues due to their lower vapor pressure), seasonal variations in  $\delta D$  are primarily tracing variations in humidity. Small departures from this humidity- $\delta D$  correlation, however, could provide new insights into secondary processes of the hydrological cycle. In Sect. 6.1 we first test if the SCIAMACHY  $\delta D$  measurements can accurately represent local seasonalities of  $\delta D$ . In Sect. 6.2 we combine  $\delta D$  with humidity and study asymmetries in the primary seasonal correlation with humidity.

### 6.1 Monthly means

We show monthly means for all stations in Figs. 8 and 9. Since we now focus on the mean seasonality, we have relaxed the temporal co-location constraint of matching every FTS measurement within  $\pm 2$  h to a SCIAMACHY measurement. Instead, we selected all available FTS measurements between 2003–2012, which were taken in a  $\pm 2$  h window around the mean SCIAMACHY overpass time. The mean overpass time for a specific ground station was estimated from all available 2003–2007 SCIAMACHY measurements within a 500 km radius of the station. This results in much more available data and therefore more accurate monthly means, while still sampling the same window in the diel humidity cycle. For SCIAMACHY all available measurements between 2003–2007 within a 500 km radius of the FTS station were used, and we required a minimum of 10 measurements for any month to be used as a monthly mean.

Figures 8 and 9 show that the SCIAMACHY  $\delta D$  measurements reproduce the shape of the mean seasonalities quite well for most ground stations. This is also visible in the

## Validation of SCIAMACHY HDO/H<sub>2</sub>O measurements

R. A. Scheepmaker et al.

[Title Page](#)[Abstract](#)[Introduction](#)[Conclusions](#)[References](#)[Tables](#)[Figures](#)[Back](#)[Close](#)[Full Screen / Esc](#)[Printer-friendly Version](#)[Interactive Discussion](#)









## Validation of SCIAMACHY HDO/H<sub>2</sub>O measurements

R. A. Scheepmaker et al.

Title Page

Abstract

Introduction

Conclusions

References

Tables

Figures



Back

Close

Full Screen / Esc

Printer-friendly Version

Interactive Discussion



the stations of Bremen, Park Falls, Darwin, Jungfraujoch, Izaña and Wollongong. For reasons unknown, JPL is the only station for which SCIAMACHY observes a reversed pattern compared to FTS, of lower  $\delta D$  values from April–June compared to September–November. Nevertheless, the general behaviour of asymmetrical spring and fall transitions is captured fairly well. These asymmetries between the seasons point to differences in the distance or temperature of the source of the water vapor and show that the SCIAMACHY  $\delta D$  measurements add additional information to the measurements of humidity alone.

The FTS stations of Jungfraujoch and Izaña show much more depleted  $\delta D$  and humidities than SCIAMACHY due to their high altitude, but the SCIAMACHY observations seem to correctly connect to their Rayleigh curves, including the decreasing slope towards higher humidities. The SCIAMACHY observations above the stations Ny Ålesund, Kiruna, and Lauder show incomplete seasonal cycles due to their geographical locations, and are therefore less useful to study the seasonal asymmetries. Also, the first  $\delta D$  observations above these stations in local spring are all overestimated compared to observations later in the season (also visible in the monthly means in Figs. 8 and 9). This leads to the negative correlation coefficients in the monthly means, and the wrong orientation (too low or even negative slopes) of the  $\delta D$  vs. humidity curves. It is possible that these overestimations are caused by sampling biases due to the high latitudes. Within the 500 km co-location radius, the lower latitudes will generally have higher humidities with higher  $\delta D$ . Early in the season these lower latitudes will preferentially be sampled by SCIAMACHY due to their lower SZAs and therefore stronger signals. Such a sampling bias could also explain why SCIAMACHY overestimates the lowest humidities (and  $\delta D$ ) for Park Falls. SCIAMACHY's underestimation of the very high humidities measured at Darwin, on the other hand, might result from a sampling bias against very cloudy and humid conditions in local summer. While the FTS instruments can measure under such conditions in between the clouds, SCIAMACHY needs less cloud contaminated (and thus less humid) conditions for a measurement to successfully pass the filter criteria.

**Validation of  
SCIAMACHY  
HDO/H<sub>2</sub>O  
measurements**

R. A. Scheepmaker et al.

Title Page

Abstract

Introduction

Conclusions

References

Tables

Figures

◀

▶

◀

▶

Back

Close

Full Screen / Esc

Printer-friendly Version

Interactive Discussion



It is important to notice that the seasonal asymmetry is not present yet in the a priori information. Figures 10 and 11 show that the prior SCIAMACHY  $\delta D$  vs. humidity curve is constant at about  $-150\%$ . Although the prior TCCON  $\delta D$  varies throughout the season depending on humidity, there is no clear difference between the spring and fall transition yet. This shows that the asymmetry of both SCIAMACHY and TCCON is a result of the retrieval and that their posterior correlation has been improved compared to their a priori correlation. The same holds for MUSICA, as their a priori total column  $\delta D$  is constant for every station and their a priori total column humidity varies only slightly with surface pressure. Figure 11 shows that the posterior  $\delta D$  vs. humidity curves are very similar for TCCON and MUSICA, even though their prior information is completely different. The TCCON curves are correlated with the prior information, but especially for Lauder it can be seen that the retrieval has added information, enhancing the seasonal asymmetry and bringing it very close to the asymmetry as seen by MUSICA. For example, the spring transition in Lauder (months 8–12) shows lower  $\delta D$  than the fall transition in the a priori, while this pattern is reversed by the retrieval.

A simultaneous validation in two dimensions ( $\delta D$  and humidity) introduces the complication of possible biases in two dimensions as well. For the SCIAMACHY humidity measurements we have used the total column H<sub>2</sub>O retrievals. Since these are not ratio retrievals, certain instrumental artefacts and light path modifications (such as scattering from the clouds remaining after filtering) might not cancel out. As a very simple humidity validation exercise we have compared the retrieved H<sub>2</sub>O columns with the H<sub>2</sub>O columns from ECMWF in Fig. 14. The figure shows a high correlation ( $r = 0.96$ ) but also somewhat underestimated columns (the linear regression has a slope of 0.87). The H<sub>2</sub>O profiles from ECMWF are also used as a priori information for the H<sub>2</sub>O retrievals. This explains why in the  $\delta D$  vs. humidity diagrams the retrieved SCIAMACHY humidities remain close to their a priori. A similar high correlation between prior and posterior H<sub>2</sub>O holds for TCCON, but not for MUSICA, as the latter uses a priori H<sub>2</sub>O information based on a constant mixing ratio. For SCIAMACHY and TCCON, the slope in the  $\delta D$  vs. humidity diagram could therefore easily be affected by the choice of the H<sub>2</sub>O

prior. The retrieval of HDO, however, can add significant information independently of its prior assumptions (this was also shown by Fig. 2 in Sect. 2.3). The seasonal asymmetry introduced by this information is therefore a more robust metric of hydrological changes than the slope of the curve itself.

## 7 Conclusions and discussion

We have presented a validation study of the SCIAMACHY HDO/H<sub>2</sub>O ratio product using high-accuracy, ground-based FTS measurements. After updating the SCIAMACHY product with two additional years, the 2003–2007 time series of the HDO/H<sub>2</sub>O ratio partially overlaps with time series of six stations of the TCCON network and six stations of the NDACC-MUSICA network. After co-locating the data spatially within 500 km and temporally within  $\pm 2$  h, we find an average bias of  $-35 \pm 1.6$ ‰ using TCCON and  $-69 \pm 3.9$ ‰ using MUSICA stations (uncertainties denoting standard errors in the mean and assuming that the FTS measurements are the truth). The station-to-station standard deviations are 30 and 15 ‰, respectively. Above the high-altitude stations of Izaña and Jungfraujoch we find considerable positive biases, which are expected from the depletion of HDO with altitude and the fact that SCIAMACHY is biased towards the lower-altitude areas surrounding mountains due to its spatial footprint of 120 km  $\times$  30 km.

Throughout this work we have also studied the impact of an offset correction on the retrieved total columns HDO and H<sub>2</sub>O. An offset correction is expected to affect mostly the driest areas, which also have the largest uncertainties in  $\delta D$ , but without introducing sampling biases (as would be the case with weighting or filtering by the uncertainty). The offset correction we derived reduces the overall bias in  $\delta D$  by about 27 ‰ and leads to a much larger increase of  $\delta D$  above very dry and elevated areas. The impact at these elevated and remote areas seems justified in comparison with model data. However, its validity could not be confirmed using ground-based data. Above the FTS stations, the offset correction seems to overcorrect the driest months

## Validation of SCIAMACHY HDO/H<sub>2</sub>O measurements

R. A. Scheepmaker et al.

Title Page

Abstract

Introduction

Conclusions

References

Tables

Figures



Back

Close

Full Screen / Esc

Printer-friendly Version

Interactive Discussion



and is thereby reducing the overall correlation. Depending on the study, or area of interest, it might therefore be better to use a constant bias correction instead. The latitudinal dependency suggests a bias of  $-30\%$  for latitudes between  $-20$  to  $+50^\circ$ , and a bias of about  $-70\%$  at higher latitudes.

The latitudinal dependency of the bias also explains why the average bias determined using MUSICA (with more stations at higher latitudes compared to TCCON) is larger than the average bias determined using TCCON, even though we find smaller biases with MUSICA at the combined stations of Bremen and Lauder. The retrieval setups of MUSICA and TCCON are considerably different (including different algorithms, wavelength regions, spectroscopy, a priori inputs and calibrations), which seems to result in lower  $\delta D$  from MUSICA, compared to TCCON. To confirm this, we encourage more validations of the FTS networks using aircraft profiles, and a more dedicated intercomparison between  $\delta D$  from both networks. This should become increasingly feasible as more data become available for more recent years, also for stations that participate in both networks. Schneider et al. (2014) have performed a first validation of the MUSICA station at Izaña, using aircraft profiles, which suggests a high bias in column-averaged  $\delta D$  of about  $35\%$ . This could mean that the SCIAMACHY bias we find is actually overestimated by a similar amount. The aforementioned comparison to TCCON and more aircraft validations at different sites would be useful to confirm this.

Regardless of any bias, the SCIAMACHY HDO/H<sub>2</sub>O ratio captures local seasonal variabilities quite well, with correlation coefficients between 0.4–0.9 for the stations with complete seasonalities. The added benefit of  $\delta D$  measurements, compared to measurements of water vapor alone, becomes particularly clear when combined in  $\delta D$ -vs-humidity diagrams. We showed that SCIAMACHY can observe asymmetries in the seasonal evolution of  $\delta D$  vs. humidity, in line with the observations from the FTS networks, and which point towards a shifting pattern of water vapor source region or temperature between seasons. We also showed that this information is not present yet in the prior, even though in the case of SCIAMACHY and TCCON the prior is variable and already quite close to the truth. Therefore, the information was clearly added by

## Validation of SCIAMACHY HDO/H<sub>2</sub>O measurements

R. A. Scheepmaker et al.

Title Page

Abstract

Introduction

Conclusions

References

Tables

Figures



Back

Close

Full Screen / Esc

Printer-friendly Version

Interactive Discussion



**Validation of  
SCIAMACHY  
HDO/H<sub>2</sub>O  
measurements**

R. A. Scheepmaker et al.

Title Page

Abstract

Introduction

Conclusions

References

Tables

Figures

◀

▶

◀

▶

Back

Close

Full Screen / Esc

Printer-friendly Version

Interactive Discussion



the retrieval. We have to consider, though, that in the a posteriori calculation of  $\delta D$ , the SCIAMACHY and TCCON retrievals could not be corrected for cross-dependencies between HDO and H<sub>2</sub>O, nor for their difference in retrieval sensitivity at higher layers (the bottom-scaling approach was adopted to optimize this sensitivity in the most important lowest layer). This means that to some extent, variations in the calculated  $\delta D$  could have been due to variations in H<sub>2</sub>O, instead of variations in the true  $\delta D$ . This might explain some of the remaining differences in observed  $\delta D$  between SCIAMACHY, TCCON and MUSICA, in addition to expected differences due to measurement noise and imperfect matching of the datasets. The aforementioned caveats show that retrieving ratios such as HDO/H<sub>2</sub>O are challenging and that it is beneficial to retain the full averaging kernels, including cross correlations.

There have been a few other studies that compared SCIAMACHY or other satellite retrievals of the ratio HDO/H<sub>2</sub>O with isotope-enabled GCMs or ground-based FTS measurements. Werner et al. (2011) have compared the SCIAMACHY data with modelled  $\delta D$  values from the ECHAM5-wiso model, and found unexplained differences in  $\delta D$  of about 30% for low latitudes, up to 50% for higher latitudes (up to 60°). Our results show that these differences can almost entirely be attributed to the low bias of SCIAMACHY  $\delta D$ . Risi et al. (2012b) have compared a large number of isotopic datasets with each other and with the Laboratoire de Météorologie Dynamique-Zoom (LMDZ) general circulation model. Consistent with our results, they find the HDO/H<sub>2</sub>O ratio measured by SCIAMACHY too low compared to the measurements of TCCON and MUSICA. Their listed differences between TCCON or MUSICA and SCIAMACHY (their Table 6) are roughly comparable to our results (our Table 2), even though they did not use truly co-located datapoints, but focussed more on zonal averages. From their analysis, however, a latitudinal gradient (or “meridional bias”) in the differences between FTS and SCIAMACHY is not very apparent, leading them to conclude that the observed latitudinal gradient in the differences between observations and LMDZ is a shortcoming in the model. A latitudinal dependent bias correction of the SCIAMACHY data, as we proposed above, would actually weaken this LMDZ meridional bias. This

highlights once more the importance of further cross-validations between TCCON and MUSICA  $\delta D$ , including their latitudinal dependencies, in order to better constrain the latitudinal bias of SCIAMACHY and the models.

Finally, Boesch et al. (2013) have made a comparison between TCCON and the recent HDO/H<sub>2</sub>O observations of GOSAT. Interestingly, their estimated bias in  $\delta D$  retrieved from GOSAT (about  $-30$  to  $-70\%$ ) is very similar to our findings for SCIAMACHY, even though there are considerable differences in the retrieval setup (e.g. in the spectral fitting window and the assumed profile layers). The standard deviation of the GOSAT–TCCON differences are almost half of what we find for the SCIAMACHY–TCCON differences, showing the improved precision of HDO/H<sub>2</sub>O retrievals of GOSAT compared to SCIAMACHY. The similarity in the biases gives us confidence in the prospect of using the combination of both instruments to measure long and global time series of tropospheric HDO/H<sub>2</sub>O in the future. Such time series will likely be further extended with measurements from the TROPOMI instrument onboard ESA’s Sentinel-5 Precursor mission, planned to be launched in 2016 (Veefkind et al., 2012).

*Acknowledgements.* This research was funded by the Netherlands Space Office as part of the User Support Programme Space Research under project GO-AO/16. US funding for TCCON comes from NASA’s Terrestrial Ecology Program, grant number NNX11AG01G, the Orbiting Carbon Observatory Program, the Atmospheric CO<sub>2</sub> Observations from Space (ACOS) Program and the DOE/ARM Program. The Darwin TCCON site was built at Caltech with funding from the OCO project, and is operated by the University of Wollongong, with travel funds for maintenance and equipment costs funded by the OCO-2 project. We acknowledge funding to support Darwin from the Australian Research Council, Projects LE0668470, DP0879468, DP110103118 and LP0562346, while Nicholas Deutscher is supported by Australian Research Council grant DE140100178. The Lauder TCCON programme is funded by New Zealand Foundation of Research Science and Technology contracts CO1X0204, CO1X0703 and CO1X0406 and NIWA’s Atmosphere Research Programme 3 (2011/13 Statement of Corporate Intent). The Bremen and Ny Ålesund FTS sites acknowledge funding support by the Senate of Bremen. MUSICA is funded by the European Research Council under the European Community’s Seventh Framework Programme (FP7/2007-2013)/ERC Grand agreement number 256961. The observational program at Jungfraujoch has been supported by the F.R.S.-FNRS and the

**Validation of  
SCIAMACHY  
HDO/H<sub>2</sub>O  
measurements**

R. A. Scheepmaker et al.

Title Page

Abstract

Introduction

Conclusions

References

Tables

Figures



Back

Close

Full Screen / Esc

Printer-friendly Version

Interactive Discussion









## Validation of SCIAMACHY HDO/H<sub>2</sub>O measurements

R. A. Scheepmaker et al.

Title Page

Abstract

Introduction

Conclusions

References

Tables

Figures

◀

▶

◀

▶

Back

Close

Full Screen / Esc

Printer-friendly Version

Interactive Discussion



Frankenberg, C., Aben, I., Bergamaschi, P., Dlugokencky, E. J., van Hees, R., Houweling, S., van der Meer, P., Snel, R., and Tol, P.: Global column-averaged methane mixing ratios from 2003 to 2009 as derived from SCIAMACHY: trends and variability, *J. Geophys. Res.-Atmos.*, 116, 4302, doi:10.1029/2010JD014849, 2011. 11805

5 Frankenberg, C., Wunch, D., Toon, G., Risi, C., Scheepmaker, R., Lee, J.-E., Wennberg, P., and Worden, J.: Water vapor isotopologue retrievals from high-resolution GOSAT shortwave infrared spectra, *Atmos. Meas. Tech.*, 6, 263–274, doi:10.5194/amt-6-263-2013, 2013. 11803, 11804, 11811

10 Gloudemans, A. M. S., Schrijver, H., Kleipool, Q., van den Broek, M. M. P., Straume, A. G., Lichtenberg, G., van Hees, R. M., Aben, I., and Meirink, J. F.: The impact of SCIAMACHY near-infrared instrument calibration on CH<sub>4</sub> and CO total columns, *Atmos. Chem. Phys.*, 5, 2369–2383, doi:10.5194/acp-5-2369-2005, 2005. 11808

15 Herbin, H., Hurtmans, D., Clerbaux, C., Clarisse, L., and Coheur, P.-F.: H<sub>2</sub><sup>16</sup>O and HDO measurements with IASI/MetOp, *Atmos. Chem. Phys.*, 9, 9433–9447, doi:10.5194/acp-9-9433-2009, 2009. 11803

Jouzel, J., Russell, G. L., Suozzo, R. J., Koster, R. D., White, J. W. C., and Broecker, W. S.: Simulations of the HDO and H<sub>2</sub><sup>18</sup>O atmospheric cycles using the NASA/GISS general circulation model: the seasonal cycle for present-day conditions, *J. Geophys. Res.*, 92, 14739–14760, doi:10.1029/JD092iD12p14739, 1987. 11802

20 Kleipool, Q. L., Jongma, R. T., Gloudemans, A. M. S., Schrijver, H., Lichtenberg, G. F., van Hees, R. M., Maurellis, A. N., and Hoogeveen, R. W. M.: In-flight proton-induced radiation damage to SCIAMACHY's extended-wavelength InGaAs near-infrared detectors, *Infrared Phys. Techn.*, 50, 30–37, doi:10.1016/j.infrared.2006.08.001, 2007. 11808

25 Kurylo, M. and Solomon, S.: Network for the detection of stratospheric change: a status and implementation report, NASA, Upper Atmosphere Research Program, NOAA Climate and Global Change Program, Washington DC, 1990. 11803

Lacour, J.-L., Risi, C., Clarisse, L., Bony, S., Hurtmans, D., Clerbaux, C., and Coheur, P.-F.: Lacour, J.-L., Risi, C., Clarisse, L., Bony, S., Hurtmans, D., Clerbaux, C., and Coheur, P.-F.: Mid-tropospheric  $\delta D$  observations from IASI/MetOp at high spatial and temporal resolution, *Atmos. Chem. Phys.*, 12, 10817–10832, doi:10.5194/acp-12-10817-2012, 2012. 11803

30 Meirink, J. F., Eskes, H. J., and Goede, A. P. H.: Sensitivity analysis of methane emissions derived from SCIAMACHY observations through inverse modelling, *Atmos. Chem. Phys.*, 6, 1275–1292, doi:10.5194/acp-6-1275-2006, 2006. 11807

## Validation of SCIAMACHY HDO/H<sub>2</sub>O measurements

R. A. Scheepmaker et al.

Title Page

Abstract

Introduction

Conclusions

References

Tables

Figures



Back

Close

Full Screen / Esc

Printer-friendly Version

Interactive Discussion



Randall, D., Wood, R., Bony, S., Colman, R., Fichet, T., Fyfe, J., Kattsov, V., Pitman, A., Shukla, J., Srinivasan, J., Stouffer, R., Sumi, A., and Taylor, K.: Climate models and their evaluation, in: *Climate Change 2007: The Physical Science Basis. Contribution of Working Group I to the Fourth Assessment Report of the Intergovernmental Panel on Climate Change*, edited by: Solomon, S., Qin, D., Manning, M., Chen, Z., Marquis, M., Averyt, K. B., Tignor, M., and Miller, H. L., Cambridge University Press, Cambridge, UK, New York, NY, USA, 2007. 11802

Risi, C., Bony, S., Vimeux, F., Frankenberg, C., Noone, D., and Worden, J.: Understanding the Sahelian water budget through the isotopic composition of water vapor and precipitation, *J. Geophys. Res.*, 115, D24110, doi:10.1029/2010JD014690, 2010. 11803, 11823

Risi, C., Noone, D., Worden, J., Frankenberg, C., Stiller, G., Kiefer, M., Funke, B., Walker, K., Bernath, P., Schneider, M., Bony, S., Lee, J., Brown, D., and Sturm, C.: Process-evaluation of tropospheric humidity simulated by general circulation models using water vapor isotopic observations: 2. Using isotopic diagnostics to understand the mid and upper tropospheric moist bias in the tropics and subtropics, *J. Geophys. Res.-Atmos.*, 117, D05304, doi:10.1029/2011JD016623, 2012a. 11803

Risi, C., Noone, D., Worden, J., Frankenberg, C., Stiller, G., Kiefer, M., Funke, B., Walker, K., Bernath, P., Schneider, M., Wunch, D., Sherlock, V., Deutscher, N., Griffith, D., Wennberg, P. O., Strong, K., Smale, D., Mahieu, E., Barthlott, S., Hase, F., García, O., Notholt, J., Warneke, T., Toon, G., Sayres, D., Bony, S., Lee, J., Brown, D., Uemura, R., and Sturm, C.: Process-evaluation of tropospheric humidity simulated by general circulation models using water vapor isotopologues: 1. Comparison between models and observations, *J. Geophys. Res.-Atmos.*, 117, D05303, doi:10.1029/2011JD016621, 2012b. 11803, 11812, 11828

Rodgers, C. D.: *Inverse Methods for Atmospheric Sounding – Theory and Practice*, World Scientific Publishing Co. Pte. Ltd., Singapore, 2000. 11805

Rokotyan, N. V., Zakharov, V. I., Griбанov, K. G., Schneider, M., Bréon, F.-M., Jouzel, J., Imasu, R., Werner, M., Butzin, M., Petri, C., Warneke, T., and Notholt, J.: A posteriori calculation of  $\delta^{18}\text{O}$  and  $\delta D$  in atmospheric water vapour from ground-based near-infrared FTIR retrievals of  $\text{H}_2^{16}\text{O}$ ,  $\text{H}_2^{18}\text{O}$ , and  $\text{HD}^{16}\text{O}$ , *Atmos. Meas. Tech.*, 7, 2567–2580, doi:10.5194/amt-7-2567-2014, 2014. 11813

Rothman, L. S., Gordon, I. E., Barbe, A., Benner, D. C., Bernath, P. F., Birk, M., Boudon, V., Brown, L. R., Campargue, A., Champion, J.-P., Chance, K., Coudert, L. H., Dana, V.,

## Validation of SCIAMACHY HDO/H<sub>2</sub>O measurements

R. A. Scheepmaker et al.

Title Page

Abstract

Introduction

Conclusions

References

Tables

Figures

◀

▶

◀

▶

Back

Close

Full Screen / Esc

Printer-friendly Version

Interactive Discussion



Devi, V. M., Fally, S., Flaud, J.-M., Gamache, R. R., Goldman, A., Jacquemart, D., Kleiner, I.,  
Lacome, N., Lafferty, W. J., Mandin, J.-Y., Massie, S. T., Mikhailenko, S. N., Miller, C. E.,  
Moazzen-Ahmadi, N., Naumenko, O. V., Nikitin, A. V., Orphal, J., Perevalov, V. I., Perrin, A.,  
Predoi-Cross, A., Rinsland, C. P., Rotger, M., Šimečková, M., Smith, M. A. H., Sung, K.,  
5 Tashkun, S. A., Tennyson, J., Toth, R. A., Vandaele, A. C., and Vander Auwera, J.: The HI-  
TRAN 2008 molecular spectroscopic database, *J. Quant. Spectrosc. Ra.*, 110, 533–572,  
doi:10.1016/j.jqsrt.2009.02.013, 2009. 11815

Scheepmaker, R. A., Frankenberg, C., Galli, A., Butz, A., Schrijver, H., Deutscher, N. M.,  
Wunch, D., Warneke, T., Fally, S., and Aben, I.: Improved water vapour spectroscopy in the  
10 4174–4300 cm<sup>-1</sup> region and its impact on SCIAMACHY HDO/H<sub>2</sub>O measurements, *Atmos.*  
*Meas. Tech.*, 6, 879–894, doi:10.5194/amt-6-879-2013, 2013. 11805, 11806, 11814

Schneider, M. and Hase, F.: Optimal estimation of tropospheric H<sub>2</sub>O and δD with IASI/METOP,  
*Atmos. Chem. Phys.*, 11, 11207–11220, doi:10.5194/acp-11-11207-2011, 2011. 11803

Schneider, M., Hase, F., Blavier, J.-F., Toon, G. C., and Leblanc, T.: An empirical study on the  
15 importance of a speed-dependent Voigt line shape model for tropospheric water vapor profile  
remote sensing, *J. Quant. Spectrosc. Ra.*, 112, 465–474, doi:10.1016/j.jqsrt.2010.09.008,  
2011. 11815

Schneider, M., Barthlott, S., Hase, F., González, Y., Yoshimura, K., García, O. E., Sepúlveda, E.,  
Gomez-Pelaez, A., Gisi, M., Kohlhepp, R., Dohe, S., Blumenstock, T., Wiegele, A., Christ-  
20 ner, E., Strong, K., Weaver, D., Palm, M., Deutscher, N. M., Warneke, T., Notholt, J., Leje-  
une, B., Demoulin, P., Jones, N., Griffith, D. W. T., Smale, D., and Robinson, J.: Ground-based  
remote sensing of tropospheric water vapour isotopologues within the project MUSICA,  
*Atmos. Meas. Tech.*, 5, 3007–3027, doi:10.5194/amt-5-3007-2012, 2012. 11804, 11806,  
11815, 11823

Schneider, M., González, Y., Dyroff, C., Christner, E., Wiegele, A., Barthlott, S., García, O. E.,  
Sepúlveda, E., Hase, F., Andrey, J., Blumenstock, T., Guirado, C., Ramos, R., and Ro-  
25 dríguez, S.: Empirical validation and proof of added value of MUSICA's tropospheric δD  
remote sensing products, *Atmos. Meas. Tech. Discuss.*, 7, 6917–6969, doi:10.5194/amt-d-7-  
6917-2014, 2014. 11804, 11815, 11827

Soden, B. J., Jackson, D. L., Ramaswamy, V., Schwarzkopf, M. D., and Huang, X.:  
30 The radiative signature of upper tropospheric moistening, *Science*, 310, 841–844,  
doi:10.1126/science.1115602, 2005. 11802

## Validation of SCIAMACHY HDO/H<sub>2</sub>O measurements

R. A. Scheepmaker et al.

Title Page

Abstract

Introduction

Conclusions

References

Tables

Figures



Back

Close

Full Screen / Esc

Printer-friendly Version

Interactive Discussion



- Veefkind, J. P., Aben, I., McMullan, K., Förster, H. F., de Vries, J., Otter, G., Claas, J., Eskes, H. J., de Haan, J. F., Kleipool, Q., van Weele, M., Hasekamp, O., Hoogeveen, R., Landgraf, J., Snel, R., Tol, P., Ingmann, P., Voors, P., Kruizinga, P. B., Vink, R., Visser, H., and Levelt, P. F.: TROPOMI on the ESA Sentinel-5 Precursor: a GMES mission for global observations of the atmospheric composition for climate, air quality and ozone layer applications, *Remote Sens. Environ.*, 120, 70–83, doi:10.1016/j.rse.2011.09.027, 2012. 11804, 11829
- Werner, M., Langebroek, P. M., Carlsen, T., Herold, M., and Lohmann, G.: Stable water isotopes in the ECHAM5 general circulation model: toward high-resolution isotope modeling on a global scale, *J. Geophys. Res.-Atmos.*, 116, D15109, doi:10.1029/2011JD015681, 2011. 11828
- Wiegele, A., Schneider, M., Hase, F., Barthlott, S., García, O. E., Sepúlveda, E., González, Y., Blumenstock, T., Raffalski, U., Gisi, M., and Kohlhepp, R.: The MUSICA MetOp/IASI H<sub>2</sub>O and  $\delta D$  products: characterisation and long-term comparison to NDACC/FTIR data, *Atmos. Meas. Tech.*, 7, 2719–2732, doi:10.5194/amt-7-2719-2014, 2014. 11803, 11804
- Worden, J., Noone, D., Bowman, K., Beer, R., Eldering, A., Fisher, B., Gunson, M., Goldman, A., Herman, R., Kulawik, S. S., Lampel, M., Osterman, G., Rinsland, C., Rodgers, C., Sander, S., Shephard, M., Webster, C. R., and Worden, H.: Importance of rain evaporation and continental convection in the tropical water cycle, *Nature*, 445, 528–532, doi:10.1038/nature05508, 2007. 11803
- Wunch, D., Toon, G. C., Wennberg, P. O., Wofsy, S. C., Stephens, B. B., Fischer, M. L., Uchino, O., Abshire, J. B., Bernath, P., Biraud, S. C., Blavier, J.-F. L., Boone, C., Bowman, K. P., Browell, E. V., Campos, T., Connor, B. J., Daube, B. C., Deutscher, N. M., Diao, M., Elkins, J. W., Gerbig, C., Gottlieb, E., Griffith, D. W. T., Hurst, D. F., Jiménez, R., Keppel-Aleks, G., Kort, E. A., Macatangay, R., Machida, T., Matsueda, H., Moore, F., Morino, I., Park, S., Robinson, J., Roehl, C. M., Sawa, Y., Sherlock, V., Sweeney, C., Tanaka, T., and Zondlo, M. A.: Calibration of the Total Carbon Column Observing Network using aircraft profile data, *Atmos. Meas. Tech.*, 3, 1351–1362, doi:10.5194/amt-3-1351-2010, 2010. 11814
- Wunch, D., Toon, G. C., Blavier, J.-F. L., Washenfelder, R. A., Notholt, J., Connor, B. J., Griffith, D. W. T., Sherlock, V., and Wennberg, P. O.: The Total Carbon Column Observing Network, *Philos. T. R. Soc. A*, 369, 2087–2112, doi:10.1098/rsta.2010.0240, 2011. 11803, 11813, 11814
- Yoshimura, K., Frankenberg, C., Lee, J., Kanamitsu, M., Worden, J., and Röckmann, T.: Comparison of an isotopic atmospheric general circulation model with new quasi-global satel-

lite measurements of water vapor isotopologues, J. Geophys. Res.-Atmos., 116, D19118, doi:10.1029/2011JD016035, 2011. 11803, 11812

Zakharov, V. I., Imasu, R., Griбанov, K. G., Hoffmann, G., and Jouzel, J.: Latitudinal distribution of the deuterium to hydrogen ratio in the atmospheric water vapor retrieved from IMG/ADEOS data, Geophys. Res. Lett., 31, 12104, doi:10.1029/2004GL019433, 2004. 11803

5

## Validation of SCIAMACHY HDO/H<sub>2</sub>O measurements

R. A. Scheepmaker et al.

Title Page

Abstract

Introduction

Conclusions

References

Tables

Figures



Back

Close

Full Screen / Esc

Printer-friendly Version

Interactive Discussion



## Validation of SCIAMACHY HDO/H<sub>2</sub>O measurements

R. A. Scheepmaker et al.

**Table 1.** Overview of the FTS stations used in the validation study for the period 2003–2007.  $N_{\text{scia}}$  is the number of SCIAMACHY measurements which were co-located with at least one FTS measurement within a 500 km radius and a two hour time window.  $\langle N_{\text{fts}} \rangle$  is the average number of FTS datapoints per co-located SCIAMACHY measurement.

Site	Network	Latitude	Longitude	Altitude [m]	First measurement	$N_{\text{scia}}$	$\langle N_{\text{fts}} \rangle$
Ny Ålesund	TCCON	78.92° N	11.92° E	20	16 Mar 2005	509	29.8
Kiruna	MUSICA	67.84° N	20.41° E	419	25 Mar 1996	272	1.63
Bremen	TCCON	53.10° N	8.85° E	27	24 Mar 2005	261	26.1
Bremen	MUSICA	53.10° N	8.85° E	27	21 Jul 2004	90	1.93
Jungfraujoch	MUSICA	46.55° N	7.98° E	3580	28 Jan 1996	571	1.10
Park Falls	TCCON	45.95° N	90.27° W	442	2 Jun 2004	1280	51.2
JPL	TCCON	34.20° N	118.18° W	390	1 Jul 2007	1078	129
Izaña	MUSICA	28.30° N	16.48° W	2367	10 Jan 2001	1523	1.13
Darwin	TCCON	12.42° S	130.89° E	30	31 Aug 2005	1348	65.7
Wollongong	MUSICA	34.41° S	150.88° E	30	8 Aug 2007	47	2.19
Lauder	TCCON	45.04° S	169.68° E	370	28 Jun 2004	165	94.7
Lauder	MUSICA	45.04° S	169.68° E	370	6 Sep 1997	212	1.10

Title Page

Abstract

Introduction

Conclusions

References

Tables

Figures



Back

Close

Full Screen / Esc

Printer-friendly Version

Interactive Discussion



## Validation of SCIAMACHY HDO/H<sub>2</sub>O measurements

R. A. Scheepmaker et al.

**Table 2.** Results of the SCIAMACHY-FTS comparisons, before and after the SCIAMACHY offset correction. The last two rows show the weighted mean of the bias (including error in the mean) for all six TCCON stations and the four low-altitude MUSICA stations. The values within brackets are the station-to-station standard deviation. The other values in the last two rows are unweighted averages for all six TCCON and MUSICA stations.

Site	Network	Altitude [m]	Before offset correction				After offset correction			
			Bias [%]	$\sigma$ [%]	$\chi^2_\nu$	$r$	Bias [%]	$\sigma$ [%]	$\chi^2_\nu$	$r$
Ny Ålesund	TCCON	20	-86 ± 5.2	118	4.0	0.24	-45 ± 5.5	125	4.3	0.13
Kiruna	MUSICA	419	-70 ± 5.8	96	4.2	0.19	-41 ± 6.0	99	4.1	0.13
Bremen	TCCON	27	-70 ± 8.0	129	3.3	0.14	-40 ± 8.3	134	3.4	0.066
Bremen	MUSICA	27	-41 ± 15	138	3.7	0.14	-1.1 ± 16	148	4.1	0.00070
Jungfraujoch	MUSICA	3580	116 ± 6.1	146	4.6	0.17	147 ± 6.2	148	4.9	0.11
Park Falls	TCCON	442	-30 ± 3.2	115	3.6	0.43	0.38 ± 3.3	118	3.7	0.35
JPL	TCCON	390	-34 ± 3.6	119	5.3	0.36	-5.0 ± 3.6	118	4.9	0.34
Izaña	MUSICA	2367	46 ± 2.9	113	12	0.21	70 ± 2.9	113	12	0.19
Darwin	TCCON	30	-18 ± 2.6	94	3.7	0.31	-0.13 ± 2.6	94	3.7	0.28
Wollongong	MUSICA	30	-62 ± 17	115	1.8	0.20	-28 ± 17	117	1.9	0.17
Lauder	TCCON	370	-86 ± 8.8	113	3.3	0.0071	-59 ± 8.9	115	3.3	-0.018
Lauder	MUSICA	370	-74 ± 5.8	84	3.4	0.32	-49 ± 5.8	85	3.2	0.32
TCCON			-35 ± 1.6 (30)	115	3.9	0.25	-8.4 ± 1.6 (26)	117	3.9	0.19
MUSICA (bias excl. Izaña and Jungfraujoch)			-69 ± 3.9 (15)	115	5.0	0.21	-42 ± 3.9 (21)	118	5.0	0.15

## Validation of SCIAMACHY HDO/H<sub>2</sub>O measurements

R. A. Scheepmaker et al.

Title Page

Abstract

Introduction

Conclusions

References

Tables

Figures

◀

▶

◀

▶

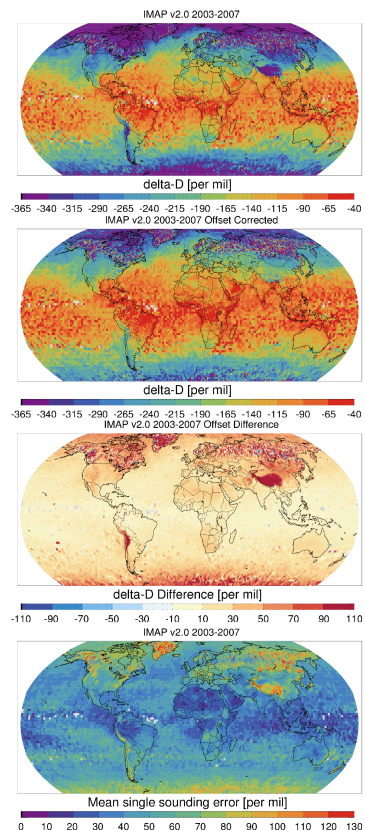
Back

Close

Full Screen / Esc

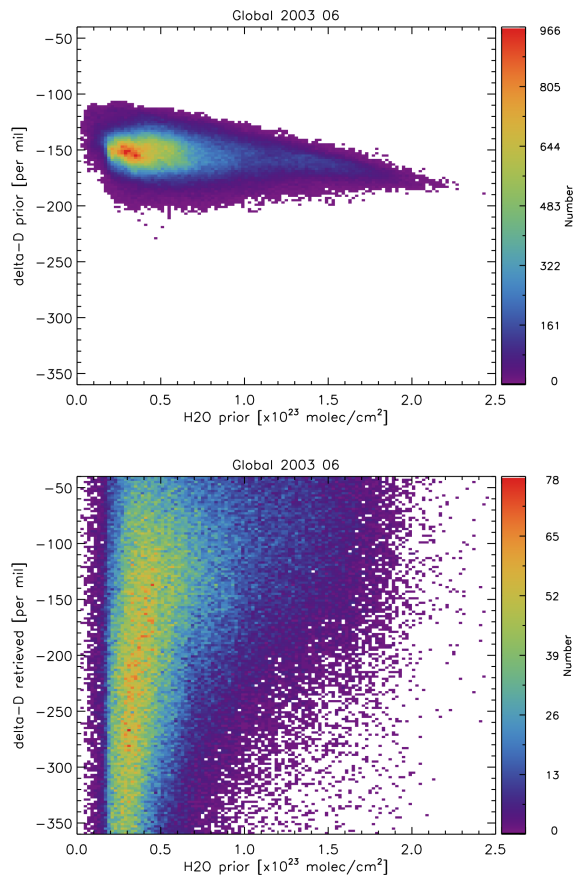
Printer-friendly Version

Interactive Discussion



**Figure 1.** Top: map of the new IMAP v2.0 2003–2007  $\delta D$  dataset. The resolution is  $1^\circ \times 1^\circ$  over land and  $2^\circ \times 2^\circ$  over water (non-weighted average of at least 2 retrievals per grid cell). Second: the same map after the offset correction. Third: difference between the map with and without the offset correction for the years 2003–2007. Bottom: mean single sounding error.

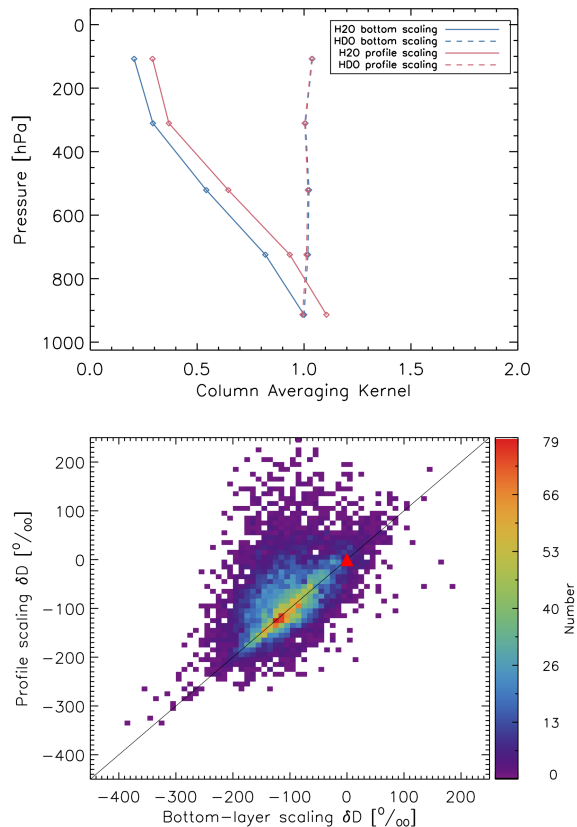




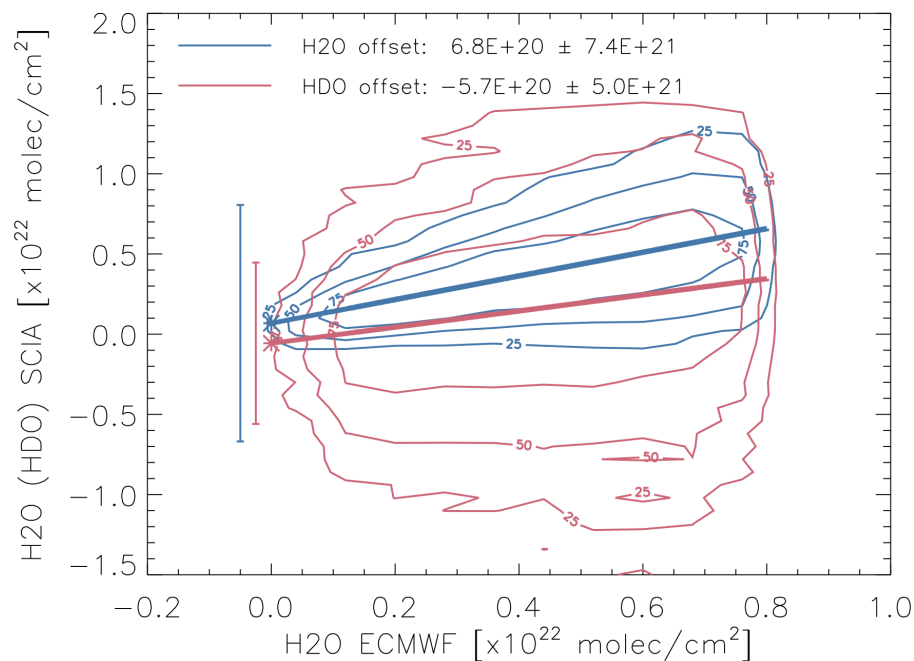
**Figure 2.** Top: density distribution of the a priori column-averaged  $\delta D$ , based on variable  $\text{H}_2\text{O}$  profiles and a fixed HDO depletion profile. Bottom: density distribution of the a posteriori  $\delta D$ , derived from the retrieval of total column  $\text{H}_2\text{O}$  and HDO. Both panels use all measurements in June 2003.

Validation of  
SCIAMACHY  
HDO/H<sub>2</sub>O  
measurements

R. A. Scheepmaker et al.



**Figure 3.** Top: typical column averaging kernels of a bottom layer scaling retrieval (blue) and a profile scaling retrieval (magenta). Bottom: impact of the profile scaling approach with respect to a bottom layer scaling approach, for a month of measurements above the Sahara. Both approaches assumed no prior depletion profile for  $\delta D$  (the red triangle shows the a priori  $\delta D$  of 0‰).



**Figure 4.** Cumulative density distributions (showing the 25, 50 and 75 percentiles) of H<sub>2</sub>O (blue) and HDO (magenta, divided by the VSMOW abundance of  $3.1153 \times 10^{-4}$ ) total columns measured by SCIAMACHY, vs. the H<sub>2</sub>O columns from ECMWF, for a box over Greenland. The thick lines show linear regressions, with their lower-left starting points, indicated by the asterisks, being the constant offsets. The errorbars are shifted to the left for readability, and denote the uncertainty in the offset.

**Validation of  
SCIAMACHY  
HDO/H<sub>2</sub>O  
measurements**

R. A. Scheepmaker et al.

Title Page

Abstract

Introduction

Conclusions

References

Tables

Figures

◀

▶

◀

▶

Back

Close

Full Screen / Esc

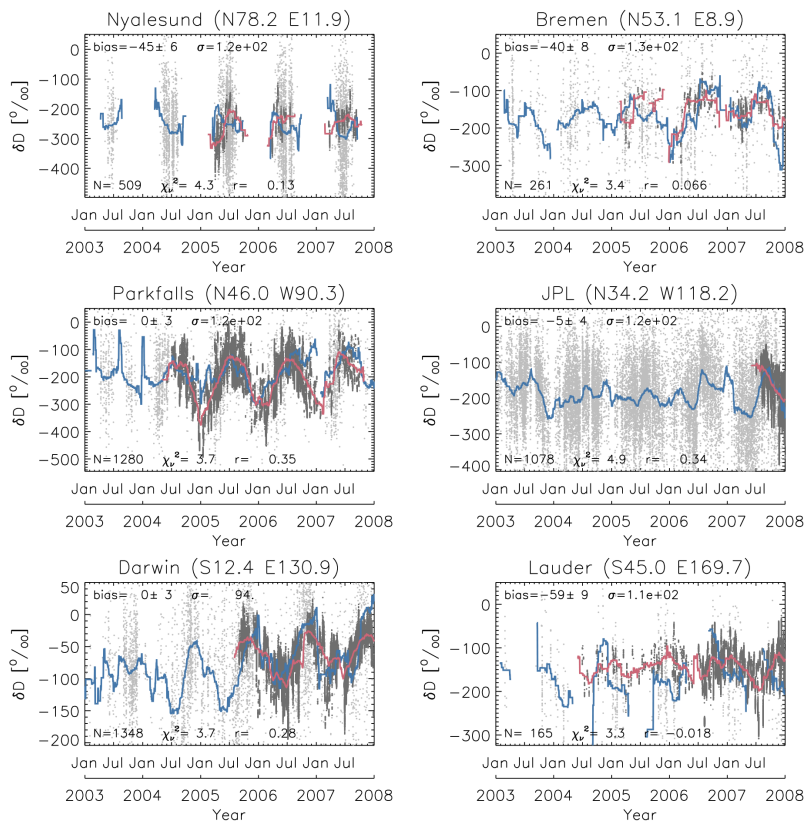
Printer-friendly Version

Interactive Discussion



## Validation of SCIAMACHY HDO/H<sub>2</sub>O measurements

R. A. Scheepmaker et al.



**Figure 5.** Time series of  $\delta D$  from six TCCON stations (dark grey dots and magenta curve) compared with  $\delta D$  from SCIAMACHY within a 500 km radius (light grey dots and blue curve, offset corrected). The curves are 60 day running averages. For the statistics an additional temporal constraint of  $\pm 2$  h was used, but no temporal constraint has been applied to the plotted datapoints.

## Validation of SCIAMACHY HDO/H<sub>2</sub>O measurements

R. A. Scheepmaker et al.

Title Page

Abstract

Introduction

Conclusions

References

Tables

Figures



Back

Close

Full Screen / Esc

Printer-friendly Version

Interactive Discussion

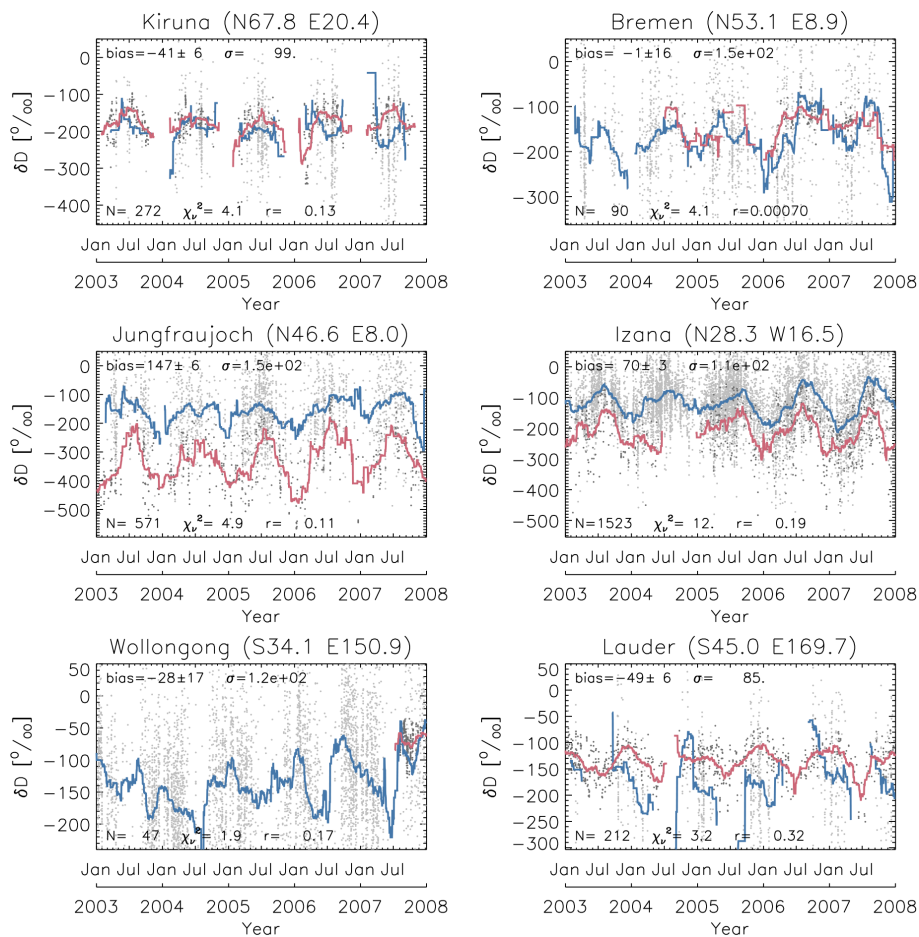
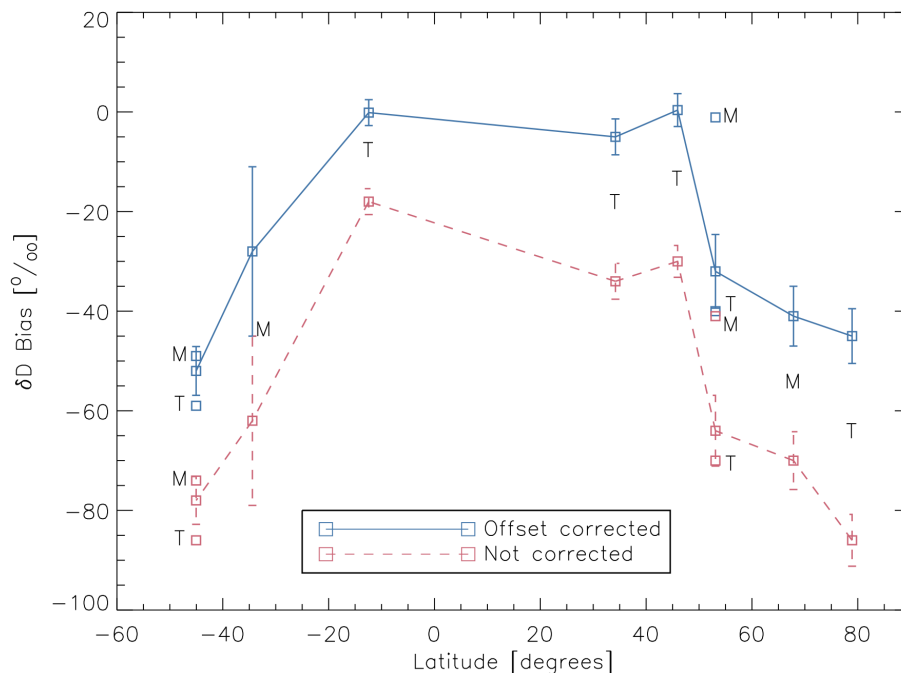


Figure 6. Same as Fig. 5 but now for the MUSICA stations.

## Validation of SCIAMACHY HDO/H<sub>2</sub>O measurements

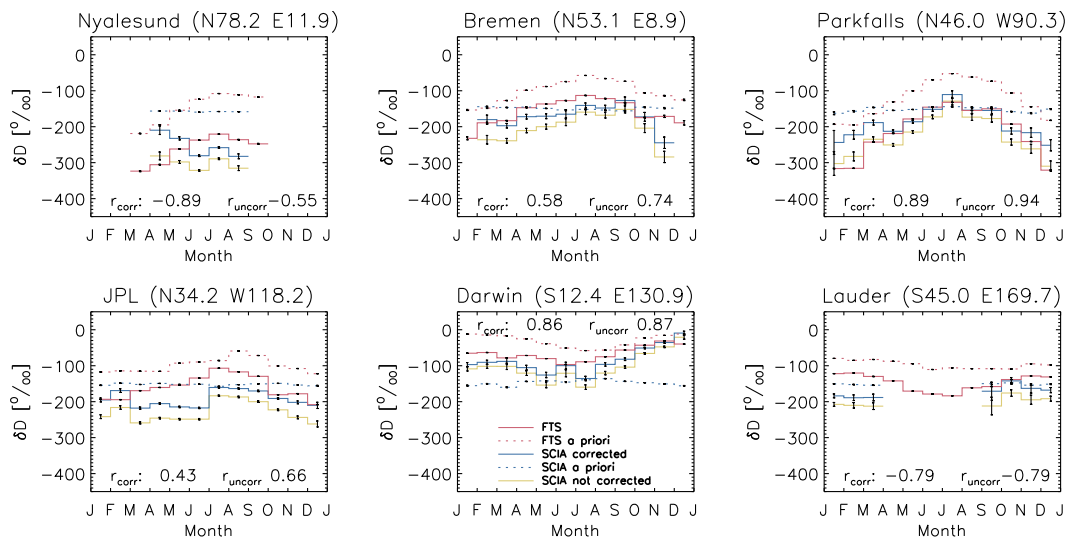
R. A. Scheepmaker et al.



**Figure 7.** Bias as a function of latitude for all low-altitude TCCON and MUSICA stations. The letters “T” and “M” indicate a TCCON and MUSICA station, respectively. For Lauder (−45°) and Bremen (+53°) the results from both networks are shown separately, but the curve follows the weighted average of both networks.

## Validation of SCIAMACHY HDO/H<sub>2</sub>O measurements

R. A. Scheepmaker et al.



**Figure 8.** Monthly means for the TCCON stations. FTS data within  $\pm 2$  h of the mean SCIAMACHY overpass time was used, from all available years. SCIAMACHY data is for 2003–2007. Error bars denote standard errors of the mean.  $r_{\text{corr}}$  and  $r_{\text{uncorr}}$  refer to the correlation coefficients between the FTS data and respectively the offset corrected and uncorrected SCIAMACHY data.

Title Page

Abstract

Introduction

Conclusions

References

Tables

Figures

◀

▶

◀

▶

Back

Close

Full Screen / Esc

Printer-friendly Version

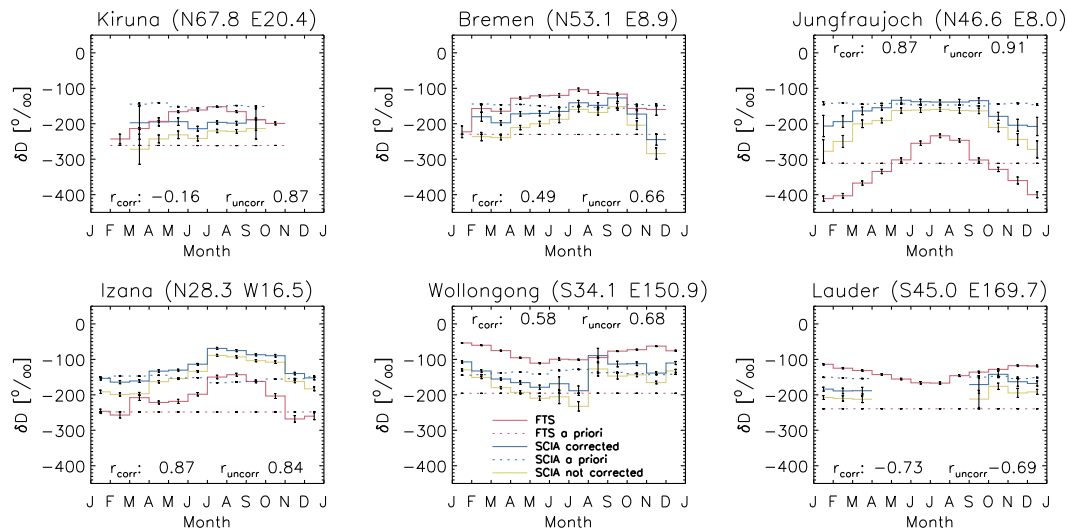
Interactive Discussion





## Validation of SCIAMACHY HDO/H<sub>2</sub>O measurements

R. A. Scheepmaker et al.



**Figure 9.** Same as Fig. 8 but now for the MUSICA stations.

Title Page

Abstract

Introduction

Conclusions

References

Tables

Figures

◀

▶

◀

▶

Back

Close

Full Screen / Esc

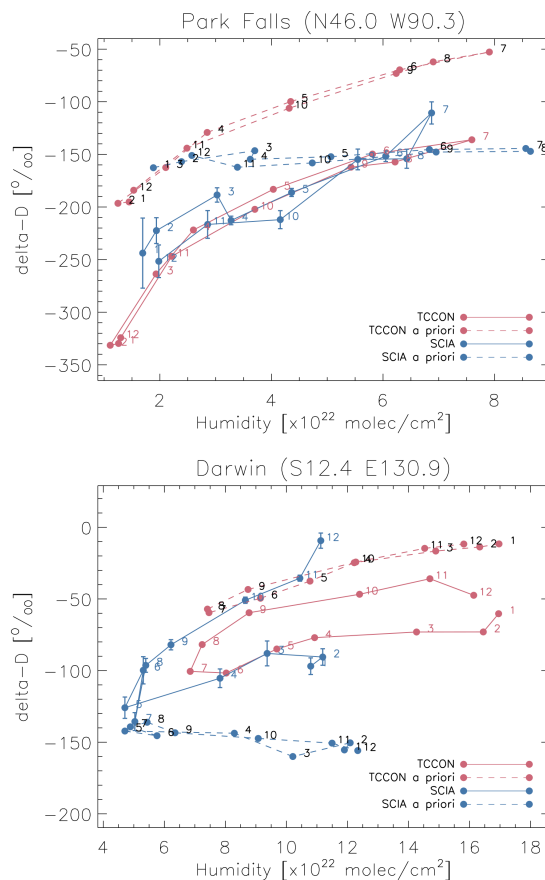
Printer-friendly Version

Interactive Discussion



## Validation of SCIAMACHY HDO/H<sub>2</sub>O measurements

R. A. Scheepmaker et al.



**Figure 10.** Monthly means of  $\delta D$  as a function of humidity for the TCCON stations Park Falls (top) and Darwin (bottom), compared to spatially co-located SCIAMACHY measurements. Subsequent months are numbered and connected by lines. The prior information is shown with dashed lines and black numbers.

Title Page

Abstract Introduction

Conclusions References

Tables Figures

◀ ▶

◀ ▶

Back Close

Full Screen / Esc

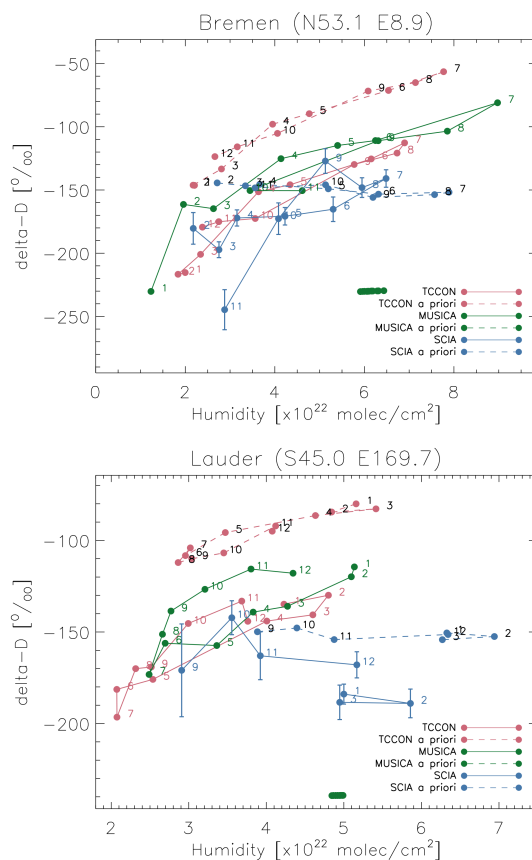
Printer-friendly Version

Interactive Discussion



## Validation of SCIAMACHY HDO/H<sub>2</sub>O measurements

R. A. Scheepmaker et al.



**Figure 11.** Same as Fig. 10 but now for the two stations participating in both TCCON and MUSICA networks.

Title Page

Abstract

Introduction

Conclusions

References

Tables

Figures

◀

▶

◀

▶

Back

Close

Full Screen / Esc

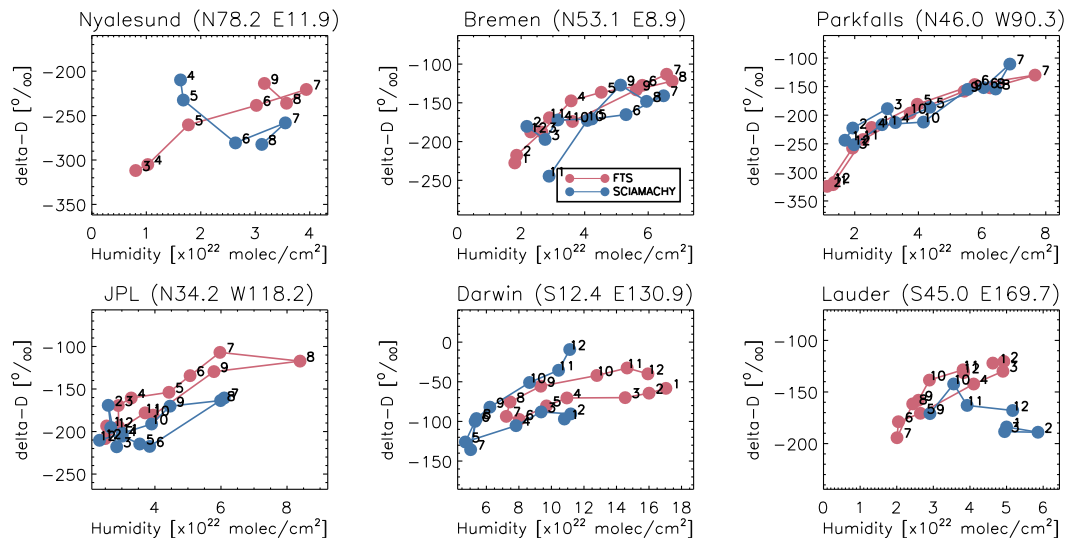
Printer-friendly Version

Interactive Discussion



## Validation of SCIAMACHY HDO/H<sub>2</sub>O measurements

R. A. Scheepmaker et al.



**Figure 12.** Monthly means of  $\delta D$  as a function of humidity for the six TCCON stations (magenta), compared to spatially co-located SCIAMACHY measurements (blue, corrected for the offset). Subsequent months (numbered) are connected by lines.

Title Page

Abstract

Introduction

Conclusions

References

Tables

Figures

◀

▶

◀

▶

Back

Close

Full Screen / Esc

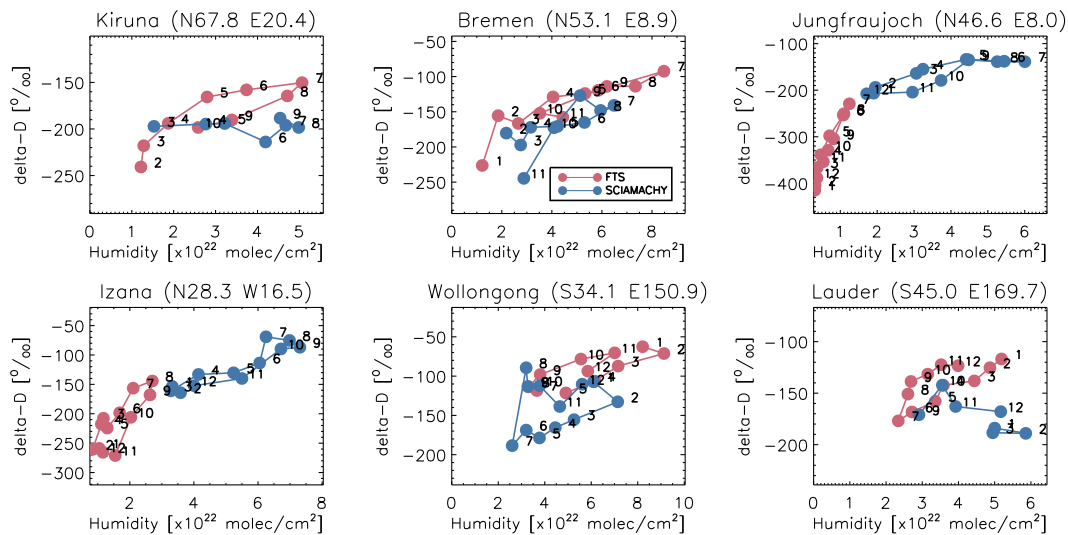
Printer-friendly Version

Interactive Discussion



## Validation of SCIAMACHY HDO/H<sub>2</sub>O measurements

R. A. Scheepmaker et al.



**Figure 13.** Same as Fig. 12 but now for the MUSICA stations.

Title Page

Abstract

Introduction

Conclusions

References

Tables

Figures



Back

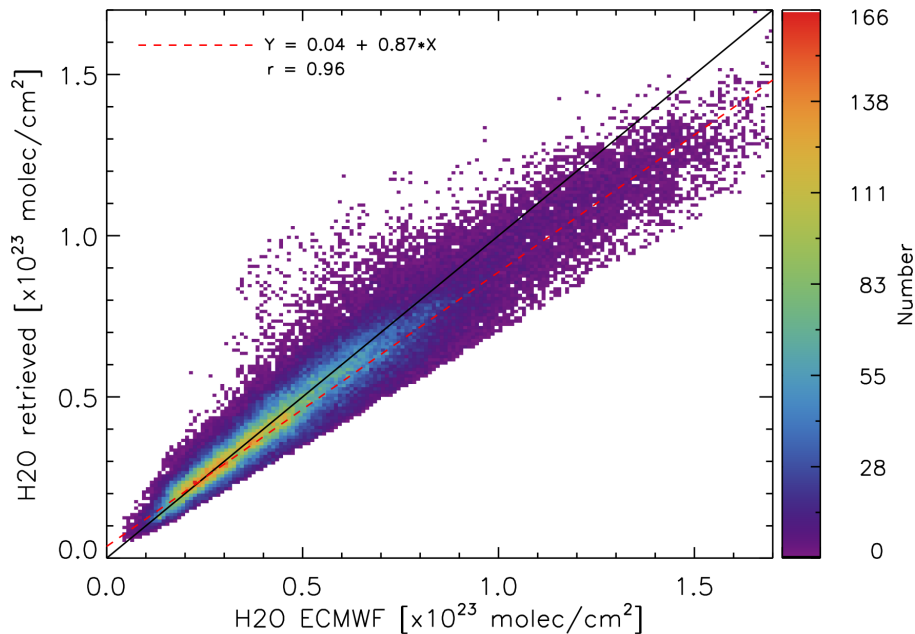
Close

Full Screen / Esc

Printer-friendly Version

Interactive Discussion





**Figure 14.** Correlation diagram of the H<sub>2</sub>O total columns retrieved by SCIAMACHY vs. the coinciding H<sub>2</sub>O total columns from ECMWF, for all measurements in 2003 above the Sahara (latitude 15 to 30°, longitude -15 to 30°). The red dashed line shows a linear regression, while “r” indicates the linear Pearson’s correlation coefficient.

**Validation of  
SCIAMACHY  
HDO/H<sub>2</sub>O  
measurements**

R. A. Scheepmaker et al.

Title Page

Abstract

Introduction

Conclusions

References

Tables

Figures

◀

▶

◀

▶

Back

Close

Full Screen / Esc

Printer-friendly Version

Interactive Discussion

