

This discussion paper is/has been under review for the journal Atmospheric Measurement Techniques (AMT). Please refer to the corresponding final paper in AMT if available.

# Tropical tropospheric ozone column retrieval for GOME-2

P. Valks<sup>1</sup>, N. Hao<sup>1</sup>, S. Gimeno Garcia<sup>1</sup>, D. Loyola<sup>1</sup>, M. Dameris<sup>2</sup>, P. Jöckel<sup>2</sup>, and A. Delcloo<sup>3</sup>

<sup>1</sup>Institut für Methodik der Fernerkundung (IMF), Deutsches Zentrum für Luft- und Raumfahrt (DLR), Oberpfaffenhofen, Germany

<sup>2</sup>Institut für Physik der Atmosphäre (IPA), Deutsches Zentrum für Luft- und Raumfahrt (DLR), Oberpfaffenhofen, Germany

<sup>3</sup>Royal Meteorological Institute of Belgium (RMI), Brussels, Belgium

Received: 19 December 2013 – Accepted: 16 January 2014 – Published: 28 January 2014

Correspondence to: P. Valks (pieter.valks@dlr.de)

Published by Copernicus Publications on behalf of the European Geosciences Union.

## Tropical tropospheric ozone column retrieval for GOME-2

P. Valks et al.

Title Page

Abstract

Introduction

Conclusions

References

Tables

Figures

◀

▶

◀

▶

Back

Close

Full Screen / Esc

Printer-friendly Version

Interactive Discussion



## Abstract

This paper presents the operational retrieval of tropical tropospheric ozone columns (TOC) from the Second Global Ozone Monitoring Experiment (GOME-2) instruments using the convective-cloud-differential (CCD) method. The retrieval is based on total ozone and cloud property data provided by the GOME Data Processor (GDP) 4.7, and uses above-cloud and clear-sky ozone column measurements to derive a monthly mean TOC between 20° N and 20° S. Validation of the GOME-2 TOC with several tropical ozonesonde sites shows good agreement, with a high correlation between the GOME-2 and sonde measurements, and small biases within ~ 3 DU. The TOC data have been used in combination with tropospheric NO<sub>2</sub> measurements from GOME-2 to analyse the effect of the 2009–2010 El Niño–Southern Oscillation (ENSO) on the tropospheric ozone distribution in the tropics. El-Niño induced dry conditions in September–October 2009 resulted in relatively high tropospheric ozone columns over the southern Indian Ocean and northern Australia, while La Niña conditions in September–October 2010 resulted in a strong increase in tropospheric NO<sub>2</sub> in South America, and enhanced ozone in the eastern Pacific and South America. Comparisons of the GOME-2 tropospheric ozone data with simulations of the ECHAM/MESSy Atmospheric Chemistry (EMAC) model for 2009 El Nino conditions, illustrate the usefulness of the GOME-2 TOC measurements in evaluating chemistry climate models. Evaluation of CCMs with appropriate satellite observations helps to identify strengths and weaknesses of the model systems, providing a better understanding of driving mechanisms and adequate relations and feedbacks in the Earth atmosphere, and finally leading to improved models.

## Tropical tropospheric ozone column retrieval for GOME-2

P. Valks et al.

Title Page

Abstract

Introduction

Conclusions

References

Tables

Figures



Back

Close

Full Screen / Esc

Printer-friendly Version

Interactive Discussion



## 1 Introduction

Ozone in the tropical troposphere plays various important roles. It plays a key role in the global oxidizing power of the atmosphere as the main source of OH, the most important oxidant in the troposphere (Thompson, 1992). Near the surface, excessive amounts of ozone are toxic to ecosystems, animals and man. Upper tropospheric ozone acts as a greenhouse gas by absorbing long-wave terrestrial radiation (Lacis et al., 1990; Foster and Shine, 1997).

Satellite observations offer the possibility to measure the distribution of tropospheric ozone over large areas and to study its large-scale temporal and spatial variability. This is of great importance, since ozone which is formed over regions where large amounts of ozone precursors are emitted, can be transported over great distances and affects areas far from the source (Thompson et al., 2001).

Tropical tropospheric ozone has been inferred from a number of instruments, including GOME (Burrows et al., 1999), SCIAMACHY (Bovensmann et al., 1999), IASI (Clerbaux et al., 2009), OMI (Levelt et al., 2006) and MLS (Waters et al., 2006). Several techniques have been used to retrieve tropospheric ozone columns, such as the tropospheric ozone residual (TOR) method using OMI total ozone and MLS stratospheric ozone column measurements (Ziemke et al., 2006), the direct retrieval of tropospheric ozone (e.g. Liu et al., 2010; Miles et al., 2014; Tuinder et al., 2013; Safieddine et al., 2013), and limb-nadir-matching observations from SCIAMACHY (Ebojje et al., 2013). Recently, also the multi-spectral retrieval of IASI thermal infrared and GOME-2 ultra-violet measurements has been demonstrated (Cuesta et al., 2013).

In this paper, we describe the retrieval of the tropospheric ozone column (TOC) from GOME-2 measurements for the tropical region using the convective-cloud-differential (CCD) method. The original CCD method developed by Ziemke et al. (1998) uses TOMS (for the period 1979–2005) and OMI (for 2004 onwards) total ozone measurements over bright, high-altitude clouds in the tropical western Pacific to obtain an above-cloud stratospheric ozone amount. In this region, bright clouds are often

AMTD

7, 727–768, 2014

### Tropical tropospheric ozone column retrieval for GOME-2

P. Valks et al.

Title Page

Abstract

Introduction

Conclusions

References

Tables

Figures



Back

Close

Full Screen / Esc

Printer-friendly Version

Interactive Discussion



## Tropical tropospheric ozone column retrieval for GOME-2

P. Valks et al.

Title Page

Abstract

Introduction

Conclusions

References

Tables

Figures

◀

▶

◀

▶

Back

Close

Full Screen / Esc

Printer-friendly Version

Interactive Discussion



associated with strong convective outflows and cloud tops in the upper troposphere. The tropical TOC is derived at cloud-free pixels by subtracting the stratospheric ozone amount from TOMS and OMI total ozone, assuming a zonally invariant stratospheric column. An improved CCD method for the tropics has been developed by Valks et al. (2003) that is based on total ozone and cloud measurements from GOME. In contrast to TOMS, GOME is able to determine cloud fraction, cloud pressure and cloud albedo (optical thickness) by using measurements in the visible and near-infrared wavelength region. The CCD method has been further developed for the retrieval of tropical TOCs from GOME-2 within the framework of EUMETSAT's Satellite Application Facility on Ozone and Atmospheric Chemistry Monitoring (O3M-SAF). The GOME-2 instrument (Callies et al., 2000), launched aboard the MetOp-A and -B satellites, observes about 4 times smaller ground pixels than its predecessor GOME and provides an almost global coverage on a daily basis. Tropical TOCs have been retrieved for the period 2007–2013 using both GOME-2/A and GOME-2/B measurements. We assess the accuracy of the GOME-2 tropical TOCs with ozonesonde measurements from the Southern Hemisphere Additional Ozonesondes (SHADOZ) network (Thompson et al., 2003a), and we study the effect of the 2009–2010 El Niño–Southern Oscillation (ENSO) on the tropospheric ozone distribution. Furthermore, we examine the tropospheric NO<sub>2</sub> distribution in the tropics from GOME-2 measurements. Tropospheric NO<sub>2</sub> columns provide valuable information on NO<sub>x</sub> emissions, and are useful to understand the effect of temporal and spatial variations in NO<sub>x</sub> emissions on the tropical tropospheric ozone distribution in the tropics. Finally, we illustrate the use of GOME-2 tropospheric ozone measurements in evaluating the Chemistry-Climate Model (CCM) EMAC (Jöckel et al., 2010). This exercise provides some insights of possibilities using this comprehensive data set helping to assess the quality of model results; it is the foundation to improve our understanding of processes driving atmospheric changes.

This paper is organized as follows. First, we give an overview of the GOME-2 satellite instrument and the operational data processing. Section 3 describes the GOME-2 total ozone and cloud products as used in the CCD algorithm, and the GOME-2

tropospheric NO<sub>2</sub> columns examined in this study. In Sect. 4, the retrieval of tropical TOCs from GOME-2 with the CCD method is described, and the validity of the method is analysed. In Sect. 5, exemplary results of the GOME-2 TOCs are shown, and the effect of the 2009–2010 ENSO on the tropical tropospheric ozone and NO<sub>2</sub> distribution is examined. Section 6 focuses on the validation of the GOME-2 tropical TOCs with ozonesonde measurements, and in Sect. 7 the potential of GOME-2 tropospheric ozone measurements in evaluating EMAC chemistry-climate model simulations is analysed. The paper ends with summary and concluding remarks.

## 2 The GOME-2 instrument

The Second Global Ozone Monitoring Experiment (GOME-2) instruments were launched on-board the MetOp-A and MetOp-B satellites in October 2006 and September 2012 respectively, and are part of the EUMETSAT Polar System (EPS). The MetOp satellites are flying on a sun-synchronous orbit with an equator crossing time of 09:30 LT (descending node) and a repeat cycle of 29 days. The GOME-2 instruments continue the long-term monitoring of atmospheric trace gases, including O<sub>3</sub> and NO<sub>2</sub>, started by GOME (launched on ESA's ERS-2 platform in 1995) and continued with SCIAMACHY (launched on ESA's ENVISAT platform in 2002). GOME-2 is an improved version of the GOME instrument on the ERS-2 satellite (Callies et al., 2000; Munro et al., 2006). It is a nadir-scanning UV-VIS-NIR spectrometer with four main optical channels, covering the spectral range between 240 and 790 nm with a spectral resolution between 0.26 nm and 0.51 nm (FWHM). Additionally, two polarisation components are measured with polarisation measurements devices (PMDs) at 30 broad-band channels covering the full spectral range.

The default swath width of the GOME-2 scan is 1920 km, which enables global coverage in about 1.5 days. The along-track dimension of the instantaneous field of view is ~ 40 km, while the across-track dimension depends on the integration time used for each channel. For the default 1920 km swath and the default integration time of

## Tropical tropospheric ozone column retrieval for GOME-2

P. Valks et al.

Title Page

Abstract

Introduction

Conclusions

References

Tables

Figures



Back

Close

Full Screen / Esc

Printer-friendly Version

Interactive Discussion



**Tropical tropospheric  
ozone column  
retrieval for GOME-2**

P. Valks et al.

Title Page

Abstract

Introduction

Conclusions

References

Tables

Figures

◀

▶

◀

▶

Back

Close

Full Screen / Esc

Printer-friendly Version

Interactive Discussion



187.5 ms, the ground pixel size is 80 km × 40 km (across-track × along-track) in the forward scan. Owing to a non-linear movement of the scan mirror, the ground pixel size remains nearly constant over the full scan. Since July 2013, the two GOME-2 instruments are operated in tandem providing global coverage on a daily basis: GOME-2 on MetOp-A is measuring with a reduced swath width of 960 km and a smaller ground pixel size of 40 km × 40 km (forward scan), while GOME-2 on MetOp-B is measuring in default mode (i.e. 1920 km swath and ground pixel size of 80 km × 40 km).

## 2.1 Data processing

The GOME-2 tropical TOC described in this paper is a level-3 product, and has been developed by the German Aerospace Center (DLR) in the framework of EUMETSAT's Satellite Application Facility on Ozone and Atmospheric Chemistry Monitoring (O3M-SAF). The focus of the O3M-SAF is to process, archive, validate and disseminate atmospheric data products of ozone, NO<sub>2</sub> and other trace gases, aerosols and surface ultraviolet radiation (<http://o3msaf.fmi.fi>).

The first step in the processing chain is the production of calibrated and geo-located level 1 radiances (level 0-to-1 processing). Level 1 products are generated operationally in the Core Ground Segment (CGS) at EUMETSAT headquarters in Darmstadt, Germany, and are broadcasted via the EUMETCast system to the O3M-SAF processing facility in DLR, Germany. The DLR multi-mission payload ground segment system (Heinen et al., 2009) controls the reception, processing, archiving, ordering and dissemination of the GOME-2 trace gas column products. The GOME-2 level 1 products are processed with the UPAS (Universal Processor for UV/VIS Atmospheric Spectrometers) system, a new generation system for the operational processing of trace gas and cloud property products (Valks et al., 2013).

The GOME-2 level-2 and -3 products are available via the GOME portal at DLR (<http://atmos.caf.dlr.de/gome2>), and can also be ordered via the O3M-SAF portal (<http://o3msaf.fmi.fi>) and EUMETSAT portal (<http://navigator.eumetsat.int>).

### 3 GOME-2 trace gases and cloud measurements

#### 3.1 GOME-2 total ozone

The total ozone columns are retrieved from the ratio of the earthshine and sunshine spectra measured by GOME-2 and utilizing the characteristic ozone spectral absorption features in a part of the Huggins ozone absorption band (325–335 nm). The retrieval is performed with the GOME Data Processor (GDP) version 4.7 (Loyola et al., 2011; Hao et al., 2014) the latest incarnation of the GDP 4 algorithm (Van Roozendael et al., 2006). The algorithm employs the two-step Differential Optical Absorption Spectroscopy (DOAS) method (Platt and Stutz, 2008), with slant column fitting followed by air mass factor conversion to the vertical column density. The slant column fitting is based on Beer's law for trace gas absorption, and includes a polynomial closure term to deal with broadband signatures over the 325–335 nm fitting window. The fitting includes amplitudes for the effective temperature of the ozone absorption, NO<sub>2</sub> absorption and for spectral interference signatures (instrumental under-sampling, Ring-effect filling-in of solar Fraunhofer features), and a provision for earthshine/solar spectra wavelength registration offsets. In the retrieval, the use of Daumont–Brion–Malicet ozone cross-sections (Malicet et al., 1995; Brion et al., 1998), convolved with the GOME-2 instrument slit function (Siddans et al., 2006) provides the most consistent and stable results for GOME-2 (Hao et al., 2014).

Air mass factors are calculated on-line with the multiple-scattering radiative transfer code LIDORT (Spurr, 2008). Optical property setups for the air mass factor computations are based on the TOMS V8 ozone profile climatology classified by total column (McPeters et al., 2007), and the assumption of a Rayleigh scattering atmosphere. The air mass factors are computed at a single wavelength of 325.5 nm (Van Roozendael et al., 2006). The vertical column  $V$  and the air mass factors are adjusted iteratively to

AMTD

7, 727–768, 2014

## Tropical tropospheric ozone column retrieval for GOME-2

P. Valks et al.

Title Page

Abstract

Introduction

Conclusions

References

Tables

Figures

◀

▶

◀

▶

Back

Close

Full Screen / Esc

Printer-friendly Version

Interactive Discussion







## 3.2 GOME-2 tropospheric NO<sub>2</sub> column

The tropospheric NO<sub>2</sub> algorithm for GOME-2, as implemented in the GOME Data Processor (GDP) version 4.7 consists of several retrieval steps, as described in Valks et al. (2011). First, the DOAS method is used to determine NO<sub>2</sub> slant column densities from calibrated GOME-2 (ir)radiance data in the 425–450 nm wavelength range, and initial total NO<sub>2</sub> columns are computed using an air mass factor based on a stratospheric NO<sub>2</sub> profile climatology. Then a spatial filtering method is used to obtain the stratospheric NO<sub>2</sub> component from the initial total NO<sub>2</sub> column. After the stratosphere-troposphere separation, the tropospheric NO<sub>2</sub> column can be determined by subtracting the stratospheric component from the total NO<sub>2</sub> slant column, and applying a tropospheric air mass factor. For the tropospheric air mass factor computation, monthly average NO<sub>2</sub> profiles from the MOZART-2 chemistry transport model are used, determined for the satellite overpass time. GOME-2 derived cloud properties, determined with the OCRA and ROCINN algorithms (see next section) are used to calculate the air mass factors for scenarios in the presence of clouds. For this study, monthly mean tropospheric NO<sub>2</sub> fields on a 1° × 1° grid have been calculated from orbit-based (level-2) GOME-2 data with cloud radiance fractions ≤ 0.5, as provided by the GDP 4.7.

## 3.3 Cloud properties

The OCRA and ROCINN algorithms (Loyola et al., 2007) are used for obtaining GOME-2 cloud information: OCRA provides the radiometric cloud fraction using the broadband polarization UVN measurements, and ROCINN provides effective cloud pressure and cloud albedo from measurements in and adjacent to the oxygen A-band around 760 nm.

With GOME-2, several improvements have been incorporated in the cloud algorithms. The initial ROCINN algorithm was based on scalar radiative transfer calculations in the oxygen A-band, without taking into account scattering by molecules and particles. ROCINN version 2.0, as used for GOME-2, is based on vector radiative

AMTD

7, 727–768, 2014

## Tropical tropospheric ozone column retrieval for GOME-2

P. Valks et al.

Title Page

Abstract

Introduction

Conclusions

References

Tables

Figures

◀

▶

◀

▶

Back

Close

Full Screen / Esc

Printer-friendly Version

Interactive Discussion





## Tropical tropospheric ozone column retrieval for GOME-2

P. Valks et al.

Title Page

Abstract

Introduction

Conclusions

References

Tables

Figures

◀

▶

◀

▶

Back

Close

Full Screen / Esc

Printer-friendly Version

Interactive Discussion



the monthly-mean pressures of tropical convective cloud are between 200 and 400 hPa in the highly convective areas over the Indian Ocean and western Pacific. These results confirm the good agreement between the cloud properties derived from ROCINN using GOME/ERS-2 and ISCCP (Loyola et al., 2010). These cloud levels are more than hundred hPa below the tropopause, which is located around 100 hPa in the tropics. This is in agreement with other studies that suggest that most convective cloud tops do not extend up to the tropopause, but to the bottom of the tropical transition layer (Folkins et al., 1999; Fueglistaler et al., 2009), several kilometres below the tropopause. Furthermore, the effective (also called optical centroid) cloud pressure derived from VIS and NIR (oxygen A-band) satellite measurements using the Lambertian cloud model lies well below the physical cloud top pressure (Joiner et al., 2012; Ziemke et al., 2009a). The bottom panels of Fig. 2 show the frequency distributions of the cloud albedos as derived by ROCINN. The retrieved GOME-2 cloud albedos are mostly between 0.6 and 0.85, illustrating the high reflectivity of tropical convective clouds in the visible wavelength range.

## 4 Tropical tropospheric ozone retrieval from GOME-2

### 4.1 GOME-2 CCD method

The tropical TOC have been retrieved from GOME-2 measurements using the convective-cloud-differential (CCD) method. In the first step, cloudy GOME-2 measurements with cloud fraction  $f \geq 0.8$ , cloud albedo  $a_c \geq 0.75$ , and cloud top pressure  $p_c \leq 300$  hPa are used to determine the above-cloud ozone column (above  $\sim 200$  hPa, including the ozone column in the stratosphere and the tropical transition layer), as illustrated in Fig. 3. The cloudy GOME-2 measurements are selected from tropical measurements over the highly convective eastern Indian Ocean and the western Pacific ( $70^\circ$  E– $170^\circ$  W), where the greatest frequency of high level and high albedo clouds is found. The above-cloud ozone column is determined using Eq. (3).

**Tropical tropospheric  
ozone column  
retrieval for GOME-2**

P. Valks et al.

Title Page

Abstract

Introduction

Conclusions

References

Tables

Figures

◀

▶

◀

▶

Back

Close

Full Screen / Esc

Printer-friendly Version

Interactive Discussion



As described in the previous section, the GOME-2 cloud pressures for the tropical convective clouds, as determined with OCRA/ROCINN, are between 200 and 400 hPa. To be able to calculate a consistent tropospheric ozone column with the CCD method, above-cloud ozone columns are derived for a fixed pressure level of 200 hPa. To that end, a small correction has been made for the difference between the cloud pressure level and the 200 hPa level (typically 0–2 DU), assuming a constant (small) ozone volume mixing ratio of 5 ppbv (see Sect. 4.2). After this correction, the stratospheric ozone columns are monthly averaged for 1.25° latitude bands between 20° N and 20° S. Hereby, it is assumed that the stratospheric ozone column is independent of longitude in a given latitude band. The number of cloudy GOME-2 pixels with  $f \geq 0.8$  and  $p_c \leq 350$  hPa varies between 150–800 per month for each (1.25°) latitude band. Although this number is less than 2% of all the GOME-2 measurements, it is sufficiently large to provide an adequate statistical mean for the stratospheric ozone column. Because of the seasonal migration of the ITCZ, the region of tropical air shows a seasonal displacement as well. Periodically, sub-tropical air is present in the outer latitude bands (15–20° N or 15–20° S), resulting in a small number of deep-convective cloud tops and an increased zonal variation in the derived stratospheric ozone column, especially within in the 15–20° N latitude band. In those cases, the northern (or southern) boundary for the GOME-2/CCD analysis will be limited to lower latitudes.

In the second step, cloud-free GOME-2 measurements ( $f \leq 0.1$ ) are used to determine the total ozone column. In case of cloud-free pixels, GOME-2 is able to detect both, ozone in the stratosphere and in the troposphere. About half of the total number of GOME-2 measurements in the tropics is cloud-free ( $f \leq 0.1$ ). The total ozone columns are monthly averaged on a 1.25° latitude by 2.5° longitude grid. In a last step, the zonal mean stratospheric ozone column is subtracted from the gridded total ozone values, resulting in the monthly mean TOC.

## 4.2 Variability in stratospheric and upper tropospheric ozone

An important assumption made in the CCD method is that the stratospheric ozone column is independent of longitude in the tropics. This assumption is based upon results of many years of ozone measurements from satellites and ozonesondes, as described below.

In Valks et al. (2003) comparisons of the CCD method for the GOME/ERS-2 instrument with stratospheric ozone columns based on ozonesonde data from the SHADOZ network have been made. The monthly-mean stratospheric ozone columns derived with the GOME-CCD method have been compared with ozonesonde measurements for eight tropical sites. A good agreement was found for these sites: the biases between the stratospheric ozone columns derived from GOME and the ozonesonde measurements are within the 3 DU range and the RMS differences at the sonde sites lie between 4 and 7 DU. A similar comparison for GOME-2/MetOp-A using SHADOZ ozonesonde data for the period 2007–2012 (see Sect. 6) reveals comparable biases within the 3 DU range and RMS differences between 3 and 7 DU (not shown). Comparisons of the TOMS/CCD method with SAGE II stratospheric ozone data have been made by Ziemke et al. (2005). For the tropical region between 20° N–20° S, the bias between the TOMS and SAGE stratospheric column is in the 1–4 DU range, while the RMS differences average around 4–5 DU. In Ziemke et al. (2009a, 2010) comparisons have been made between the OMI stratospheric column derived from a cloud slicing method and MLS stratospheric ozone. They found a very good agreement with a small mean difference of 1–3 DU and a zonal RMS difference of 2–3 DU. These studies show that the assumption that the monthly-mean stratospheric ozone column is invariant with longitude has sufficient validity to derive a tropical tropospheric ozone column with the CCD method that contains valuable information about the tropospheric ozone variability.

Another important assumption made in the original CCD method (Ziemke et al., 1998) is that UV measuring instruments such as GOME-2 only measure the ozone above the tops of highly reflective clouds, and that Eq. (3) can be used to determine

AMTD

7, 727–768, 2014

### Tropical tropospheric ozone column retrieval for GOME-2

P. Valks et al.

Title Page

Abstract

Introduction

Conclusions

References

Tables

Figures

◀

▶

◀

▶

Back

Close

Full Screen / Esc

Printer-friendly Version

Interactive Discussion



## Tropical tropospheric ozone column retrieval for GOME-2

P. Valks et al.

Title Page

Abstract

Introduction

Conclusions

References

Tables

Figures

◀

▶

◀

▶

Back

Close

Full Screen / Esc

Printer-friendly Version

Interactive Discussion



the above-cloud ozone column. However, radiative transfer simulations show that there is also UV photon penetration and ozone absorption within deep convective clouds (Kokhanovsky and Rozanov, 2008; Ziemke et al., 2009a). The tropospheric ozone sensitivity at UV wavelengths for deep convective clouds is largest within the upper portion of these clouds. To analyse the effect of the ozone absorption within deep convective clouds on the accuracy of the GOME-2/CCD method, the ozone column above highly reflective clouds ( $a_c \geq 0.75$ ) over the eastern Indian Ocean and western Pacific has been determined as a function of cloud pressure (as provided by ROCINN). This makes it possible to use the ensemble cloud slicing technique to estimate ozone mixing ratios inside convective clouds (Ziemke et al., 2009a). Figure 4 shows four examples of the retrieved above-cloud ozone columns from GOME-2 measurements in October 2007 and March 2008. Here, the cloud pressure ranges from 175 to 700 hPa, however the above cloud column does not increase significantly for larger cloud top pressures. Using the ensemble cloud slicing technique, a small mean concentration of about 4–7 ppbv is found for the ozone inside the high reflective clouds in these regions of the tropical eastern Indian Ocean and western Pacific. Cloud slicing retrievals for other months show similar results: in general, very low (and even near-zero) ozone concentrations are found in the middle-to-upper troposphere over much of this tropical region. These analyses indicate that the GOME-2/CCD method will provide an accurate estimate of the tropical stratospheric column because the ozone mixing ratio inside deep convective clouds in the eastern Indian Ocean and western Pacific is exceedingly small.

### 5 Tropical tropospheric ozone and NO<sub>2</sub> distributions

With the CCD method, monthly mean tropospheric ozone columns have been calculated on a 1.25° latitude by 2.5° longitude grid for the tropical region from January 2007 to December 2013, using GOME-2 data from both MetOp-A and MetOp-B. The GOME-2 tropical TOC can be used in combination with GOME-2 tropospheric

NO<sub>2</sub> measurements to analyse the tropospheric ozone distribution in the tropics, as illustrated in the following examples.

Figure 5 shows the tropical NO<sub>2</sub> and tropospheric ozone columns from GOME-2/MetOp-B for October 2013. This figure illustrates the effect of lightning and soil NO<sub>x</sub> sources, biomass burnings as well as dynamical processes on the tropical tropospheric ozone and NO<sub>2</sub> distribution. During the southern biomass burning season in August–October, fires produced large amounts of NO<sub>2</sub> over Southern Africa and South America as can be seen in the top plate. Also visible are the NO<sub>x</sub> emissions over densely populated areas and mega cities, such as Mexico City, Jakarta and Bangkok. (Note that the contribution of lightning NO<sub>x</sub> emissions to the tropospheric NO<sub>2</sub> column shown in Fig. 5 is limited since only GOME-2 measurements with small cloud fractions have been used (see Sect. 3.2), and because of the unbalanced partitioning of lightning NO<sub>x</sub> between NO and NO<sub>2</sub> in the upper troposphere at the GOME-2 overpass time). The bottom plate of Fig. 5, shows that large tropospheric ozone columns are found over the southern Atlantic and southern Africa, while low tropospheric ozone concentrations are found over the tropical Pacific. The enhanced tropospheric ozone over the southern tropical Atlantic is mainly a result of dynamical processes, with permanent radiative subsidence over the quasi-stationary South Atlantic anticyclone area, allowing ozone production during downward transport. The Atlantic ozone maximum in September–November can be explained by a combination of lightning and soil NO<sub>x</sub> sources, a maximum intensity of fires over Africa and South America, as well as a maximum in long-range transport (Sauvage et al., 2007; Martin et al., 2007; Ziemke et al., 2009b). The low ozone values over the Pacific can largely be attributed to convective lifting of low amounts of ozone clean air from the lower troposphere (including the pollution-free marine boundary) into the middle and upper troposphere (e.g. Solomon et al., 2005).

The El Niño–Southern Oscillation (ENSO) causes significant perturbations to both the oceanic and atmospheric circulations. These changes in circulation impact the temperature and moisture fields over the tropical Pacific and have a significant impact on the chemical composition of the troposphere (Chandra et al., 2009; Lee et al., 2010).

**Tropical tropospheric  
ozone column  
retrieval for GOME-2**

P. Valks et al.

Title Page

Abstract

Introduction

Conclusions

References

Tables

Figures

◀

▶

◀

▶

Back

Close

Full Screen / Esc

Printer-friendly Version

Interactive Discussion



## Tropical tropospheric ozone column retrieval for GOME-2

P. Valks et al.

Title Page

Abstract

Introduction

Conclusions

References

Tables

Figures



Back

Close

Full Screen / Esc

Printer-friendly Version

Interactive Discussion



The 2009–2010 ENSO influences on the large scale circulation and the variations in biomass burning emissions resulted in distinct differences between the tropospheric  $\text{NO}_2$  and ozone distributions in the tropics, as illustrated in Fig. 6. The top panels show the tropospheric  $\text{NO}_2$  and ozone distributions as measured by GOME-2/MetOp-A for 5 October 2009. El-Niño induced dry conditions resulted in an increase in biomass burnings in Northern Australia and Indonesia in September–October 2009, while biomass burning decreased in South America. This is clearly visible, for example, in the monthly global fire maps from the ATSR (Along-Trace Scanning Radiometer) satellite instrument (Arino et al., 2011). Figure 6 shows that the increase in the emissions of  $\text{NO}_x$  and other ozone precursors resulted in enhanced  $\text{NO}_2$  over northern Australia, and in relatively high tropospheric ozone columns over the southern tropical Indian Ocean and northern Australia, while the tropospheric ozone columns over the western part of South America are relatively small. The El Niño induced dynamical changes also result in enhanced ozone in the Indian Ocean and western Pacific, and reduced ozone in the eastern Pacific (Chandra et al., 2009; Ziemke et al., 2010). The bottom panels of Fig. 6 show the GOME-2 tropospheric  $\text{NO}_2$  and ozone distributions for September 2010. The La Niña conditions in September–October 2010 resulted in an increase of biomass burnings in South America and a reduction in fires in Indonesia and northern Australia. As can be seen in Fig. 6, the La Niña induced changes in biomass burnings and dynamics resulted in a strong increase in tropospheric  $\text{NO}_2$  in South America, and enhanced ozone over the eastern Pacific and South America, and reduced ozone over the western Pacific and Indian Ocean.

## 6 Comparisons with ozonesonde measurements

The accuracy of the CCD method has been assessed by comparing the GOME-2 TOC for the period 2007–2012 with tropical ozonesonde measurements from the SHADOZ network (Version 5), see Thompson et al. (2003a) and <http://croc.gsfc.nasa.gov/shadoz>. Measurements have been used from eight sites: American Samoa ( $14^\circ \text{S}$ ,





## Tropical tropospheric ozone column retrieval for GOME-2

P. Valks et al.

Title Page

Abstract

Introduction

Conclusions

References

Tables

Figures



Back

Close

Full Screen / Esc

Printer-friendly Version

Interactive Discussion



It should be noted that the temporal and geographical variability of the tropospheric ozone column is large and there is usually only one sonde measurement each week. The uncertainty in the monthly-averaged TOC from sondes can therefore be quite large, as can be seen from the occasionally large  $1\sigma$  intervals in Fig. 7. A further complication for the interpretation of the TOC with ozonesondes, is the fact that GOME-2 provides an average value over a relatively large region, while the ozonesondes represent wind-advected measurements along trajectory paths. Therefore, the satellite vs. ozonesonde comparisons are more useful to evaluate seasonal cycles and climatological means, and large variability such as inter-annual changes in the TOC induced by ENSO.

## 7 Comparisons with chemistry-climate simulations

An important application of satellite tropospheric ozone data is the evaluation of chemistry-climate models (CCMs) (e.g. Oman et al., 2013; Loyola et al., 2009). CCMs are numerical tools which are used to study connections between atmospheric chemistry and climate. They are composed of two basic parts: an Atmospheric General Circulation Model (AGCM) and a Chemistry Model which are interactively coupled. The simulated concentrations of the radiatively active gases are used in the calculations of heating and cooling rates. Changes in the abundance of these gases due to chemistry and advection influence heating and cooling rates and, consequently, variables describing atmospheric dynamics such as temperature and wind. CCMs are important tools for the assessment of the past, present and future of changes of climate and chemical composition. The validation of atmospheric model systems with observed data regarding their possibilities to describe atmospheric changes is necessary, providing a foundation for prognostic studies.

Since the spatial scales of the satellite and model ozone fields are comparable, we analyse the usefulness of tropical TOC data derived with the CCD method in evaluating CCMs. Here, we compare the GOME-2 tropospheric ozone data with simulations of the

ECHAM/MESSy Atmospheric Chemistry (EMAC) model, and analyse the variability in the TOC and the ozone response to 2009 El Niño conditions.

## 7.1 EMAC model

EMAC is a numerical chemistry and climate simulation system that includes sub-models describing tropospheric and middle atmosphere processes and their interaction with oceans, land and human influences (Jöckel et al., 2010). It uses the second version of the Modular Earth Submodel System (MESSy2) to link multi-institutional computer codes. The core atmospheric model is the 5th generation European Centre Hamburg general circulation model (ECHAM5, Roeckner et al., 2006). For the present study we applied EMAC (ECHAM5 version 5.3.02, MESSy version 2.41) in the T42L90MA-resolution, i.e. with a spherical truncation of T42 (corresponding to a quadratic Gaussian grid of approx.  $2.8^\circ$  by  $2.8^\circ$  in latitude and longitude) with 90 vertical hybrid pressure levels up to 0.01 hPa. The simulation spans the years 1998 to 2009, the model dynamics (vorticity, divergence, temperature and logarithm of surface pressure) was nudged by Newtonian relaxation towards operational analysis data from ECMWF. This technique allows the direct comparison of model results with observations, since the observed (resp. assimilated) synoptic scale meteorology is reproduced by the model (Jöckel et al., 2006). The gas phase chemistry is calculated by the submodel MECCA (Sander et al., 2011) with a comprehensive stratospheric and tropospheric chemistry mechanism including NMHC chemistry (up to C4 plus isoprene). Aqueous phase chemistry and wet-scavenging are simulated by the submodel SCAV (Tost et al., 2006), dry deposition by the submodel DRYDEP (Kerkweg et al., 2006a), primary emissions by the submodels ONLEM, OFFLEM and TNUDGE (Kerkweg et al., 2006b). Monthly anthropogenic emissions representative for the year 2000 have been used for all simulated years from Lamarque et al. (2010). Monthly biomass burning emissions for the years 1998 to 2009 have been taken from the Global Fire Emission Database (GFED v3.1; Van der Werf et al., 2010). For this study, we used monthly average tropospheric ozone columns calculated from 5 hourly model output.

## Tropical tropospheric ozone column retrieval for GOME-2

P. Valks et al.

Title Page

Abstract

Introduction

Conclusions

References

Tables

Figures



Back

Close

Full Screen / Esc

Printer-friendly Version

Interactive Discussion



## 7.2 Tropospheric ozone variations

In Fig. 7 also the respective results of EMAC are displayed for the three stations Natal, Ascension Island, and American Samoa. Despite an offset towards higher tropospheric ozone columns (mean biases of 3–6 DU), the model describes well seasonal cycles and the inter-annual fluctuations in accordance with observations. It indicates, however, that there might be some deficiencies in the chosen emission data sets which are subject to large uncertainties (e.g., Pozzer et al., 2007).

For comparison with the GOME-2 tropical TOC distribution for October 2009 shown in Fig. 6 (upper right figure), simulation results derived from EMAC are presented in Fig. 8. Generally, there is good agreement of the spatial patterns of high and low ozone values; especially in the southern tropical region, high tropical ozone is reproduced by EMAC in the eastern Atlantic, east Southern Africa, and over the Pacific, west of Australia. Pronounced low ozone values are found in the inner tropics in the Western Pacific. EMAC simulates high tropospheric ozone columns in the northern tropics in the region of the Near East and India which are not present in the GOME-2 data. An upcoming exercise regarding this inconsistency between model and satellite observations in this region is to study in more detail and clarify possible reasons: do we have problems/uncertainties with respect to the prescribed emissions/boundary conditions in EMAC, or are there indications for difficulties with the deduced values derived from the GOME-2 measurements here?

To evaluate the response of the 2009 El Niño conditions on the observed and simulated tropospheric ozone distribution, we calculated the difference between the GOME-2 tropical TOC in October 2009 and October 2008 (Fig. 9, top panel), as well as the simulated difference (lower panel). Both the GOME-2 and EMAC ozone difference maps show enhanced ozone in the Indian Ocean and western Pacific, and reduced ozone in the eastern Pacific, as a result of the El Niño induced dynamical changes in 2009. Although the basic difference pattern assessed from observed and model data are satisfactory in agreement, there are clear differences with respect to the absolute

AMTD

7, 727–768, 2014

### Tropical tropospheric ozone column retrieval for GOME-2

P. Valks et al.

Title Page

Abstract

Introduction

Conclusions

References

Tables

Figures

◀

▶

◀

▶

Back

Close

Full Screen / Esc

Printer-friendly Version

Interactive Discussion



difference values between these two October episodes in 2008 and 2009. It gives some indications for EMAC problems regarding to reproduce particular events. Clarifying this problem will need further investigations with EMAC.

Ziemke et al. (2010) derived an Ozone ENSO index (OEI) to analyse the response of tropical tropospheric ozone to the perturbation in atmospheric dynamics that is due to the ENSO signature in tropical sea-surface temperature (SST). The OEI is obtained by averaging gridded TOC over two broad equal-area regions in the Indian Ocean/western Pacific (15° N–15° S, 70–140° E) and eastern Pacific (15° N–15° S, 110–180° W), then taking their difference (western minus eastern Pacific TOC) and applying a 3 month running average. Figure 10 shows the OEI derived from the GOME-2 TOC data for the period 2007–2012, and from the EMAC model data for 2007–2009. The Nino 3.4 index based upon sea-surface temperature anomalies in the eastern Pacific is shown as well. There is good agreement between the GOME-2 and EMAC OEI time-series, and a high correlation with the Nino 3.4 index is found (0.90 for the GOME-2 OEI; 0.81 for the EMAC OEI). During El Niño, the positive phase of ENSO, the OEI anomaly is positive, corresponding to increased ozone over the western region and decreased ozone over the eastern region, while La Niña has the opposite effect. The positive response in the OEI during the 2009 El Niño is  $\sim 4$  DU. A similar negative anomaly is found during 2010 La Niña conditions. A linear regression reveals that a +1.0 K change in Nino 3.4 index corresponds to +2.0 DU change in the OEI for both the observed and simulated data. Similar results were obtained by Oman et al. (2011, 2013) using OMI, MLS and TES satellite measurements, and GEOS chemistry climate model simulations.

These analyses demonstrate the clear ozone response to ENSO observed in GOME-2 TOC measurements, which can be reproduced in the EMAC model simulations. This requires both a realistic response of the circulation to the SST and realistic simulated horizontal and vertical ozone gradients.

## Tropical tropospheric ozone column retrieval for GOME-2

P. Valks et al.

Title Page

Abstract

Introduction

Conclusions

References

Tables

Figures

◀

▶

◀

▶

Back

Close

Full Screen / Esc

Printer-friendly Version

Interactive Discussion



## 8 Summary and conclusions

In this paper, we have described the retrieval of tropical tropospheric ozone columns (TOC) from GOME-2 measurements using the convective-cloud-differential (CCD) method. The GOME-2/CCD method is based on cloud and total ozone measurements provided by the GOME Data Processor (GDP) 4.7. The cloud parameters (cloud fraction, cloud pressure and albedo) derived with the OCRA/ROCINN algorithms indicate that the effective cloud pressure level of most tropical convective clouds is between 200 and 400 hPa. Cloud slicing analyses using GOME-2 total ozone and cloud data show that generally very low ozone amounts are found inside the high reflective tropical clouds in the eastern Indian Ocean and western Pacific. This is an important prerequisite for the CCD method, which uses above-cloud and clear-sky ozone column measurements to derive the monthly mean tropospheric TOC. Comparisons with ozonesonde measurements from the SHADOZ network show that the assumption of the GOME-2/CCD method of a zonally invariant stratospheric ozone column has good validity in the tropics.

Monthly mean TOC have been calculated on a 1.25° latitude by 2.5° longitude grid (between 20° N and 20° S) for January 2007 to December 2013, using GOME-2 data from both MetOp-A and MetOp-B. The tropical TOC data have been used in combination with GOME-2 tropospheric NO<sub>2</sub> measurements to analyse the variability in the tropospheric ozone in the tropics. The 2009–2010 ENSO influences on the large scale circulation and biomass burnings had a significant impact on the tropospheric NO<sub>2</sub> and ozone distribution. El-Niño induced dry conditions in September–October 2009 resulted in relatively high tropospheric ozone columns over the southern Indian Ocean and northern Australia, while La Niña conditions in September–October 2010 resulted in a strong increase in tropospheric NO<sub>2</sub> in South America, and enhanced ozone in the eastern Pacific and South America.

Validation of the GOME-2 tropical TOC with six SHADOZ ozonesonde sites in the tropical Pacific and Indian Ocean and two ozonesonde sites in the tropical Atlantic

AMTD

7, 727–768, 2014

### Tropical tropospheric ozone column retrieval for GOME-2

P. Valks et al.

Title Page

Abstract

Introduction

Conclusions

References

Tables

Figures

◀

▶

◀

▶

Back

Close

Full Screen / Esc

Printer-friendly Version

Interactive Discussion



show good agreement, with a high correlation between the GOME-2 and sonde measurements. The bias is generally within 3 DU and the RMS differences between 3 and 5 DU.

The first use of the GOME-2 tropical TOC comparing it with respective simulation results derived from the CCM EMAC is impressive, indicating the potential for further investigations. It will help not only to identify model uncertainties, but it will improve our knowledge of atmospheric short- and long-term variability including the identification of trends. It indicates that this data set provides a significant contribution and substantial input for research projects, like the current EC StratoClim FP7 project (Stratospheric and upper tropospheric processes for better climate predictions) to investigate chemistry-climate connections. Such comprehensive data sets and related investigations provide an important contribution for international assessment reports, for instance the UNEP/WMO Scientific Assessment of Ozone Depletion: 2014 (to be published in WMO, 2015) and the Climate Assessment Report of IPCC (5AR of IPCC, 2013). Moreover, it provides significant input for climate services and an important contribution to monitor the Earth atmosphere (UNEP-WCMC program).

The GOME-2 tropical TOC product has been developed in the framework of EUMETSAT's Satellite Application Facility on Ozone and Atmospheric Chemistry Monitoring (O3M-SAF), and is generated at the O3M-SAF processing facility in DLR. GOME-2 TOC product will be available via the GOME portal at DLR (<http://atmos.caf.dlr.de/gome2>). GOME-2 products can also be ordered at the Help Desk of the O3M-SAF hosted by the Finnish Meteorological Institute (FMI) ([o3msaf@fmi.fi](mailto:o3msaf@fmi.fi)). The GOME-2 Algorithm Theoretical Basis Document (ATBD), Product User Manual (PUM), Validation Reports, as well as quick-look images and links to related services are available at the DLR-GOME portal (<http://atmos.caf.dlr.de/gome2>).

The tropical TOC dataset based on the CCD method will be extended with the GOME/ERS-2 and SCIAMACHY/ENVISAT time period in the framework of the ESA CCI programme phase II. In the same way, the CCD method will be applied to the next

## AMTD

7, 727–768, 2014

### Tropical tropospheric ozone column retrieval for GOME-2

P. Valks et al.

Title Page

Abstract

Introduction

Conclusions

References

Tables

Figures

◀

▶

◀

▶

Back

Close

Full Screen / Esc

Printer-friendly Version

Interactive Discussion



generation of European atmospheric composition missions starting with the TROPOMI sensor on-board the Sentinel 5 Precursor satellite to be launched in 2015.

*Acknowledgements.* Development of the GOME-2 tropospheric ozone column products and their validation has been funded by the O3M-SAF project with EUMETSAT and national contributions. We thank EUMETSAT for the ground-segment interfacing work with the O3M-SAF systems and for the provision of GOME-2 level 1 products.

The service charges for this open access publication have been covered by a Research Centre of the Helmholtz Association.

## References

- Antón, M. and Loyola, D.: Influence of cloud properties on satellite total ozone observations. *J. Geophys. Res.*, 116, D03208, doi:10.1029/2010JD014780, 2011.
- Arino, O., Casadio, S., and Serpe, D.: Global night-time fire season timing and fire count trends using the ATSR instrument series, *Remote Sens. Environ.*, 116, 226–238, doi:10.1016/j.rse.2011.05.025, 2011.
- Bovensmann, H., Burrows, J. P., Buchwitz, M., Frerick, J., Rozanov, V. V., Chance, K. V., and Goede, A. P. H.: SCIAMACHY: mission objectives and measurement modes, *J. Atmos. Sci.*, 56, 127–150, doi:10.1175/1520-0469(1999)056<0127:SMOAMM>2.0.CO;2, 1999.
- Brion, J., Chakir, A., Charbonnier, J., Daumont, D., Parisse, C., and Malicet, J.: Absorption spectra measurements for the ozone molecule in the 350–830 nm region, *J. Atmos. Chem.*, 30, 291–299, 1998.
- Burrows, J., Weber, M., Buchwitz, M., Rozanov, V., Ladstätter-Weißenmayer, A., Richter, A., Debeek, R., Hoogen, R., Bramstedt, K., Eichmann, K.-U., and Eisinger, M.: The Global Ozone Monitoring Experiment (GOME): mission concept and first scientific results, *J. Atmos. Sci.*, 56, 151–175, 1999.
- Callies, J., Corpaccioli, E., Eisinger, M., Hahne, A., and Lefebvre, A.: GOME-2 – MetOp's second generation sensor for operational ozone monitoring, *ESA Bull.-Eur. Space*, 102, 28–36, 2000.

## Tropical tropospheric ozone column retrieval for GOME-2

P. Valks et al.

Title Page

Abstract

Introduction

Conclusions

References

Tables

Figures

◀

▶

◀

▶

Back

Close

Full Screen / Esc

Printer-friendly Version

Interactive Discussion





## Tropical tropospheric ozone column retrieval for GOME-2

P. Valks et al.

Title Page

Abstract

Introduction

Conclusions

References

Tables

Figures

◀

▶

◀

▶

Back

Close

Full Screen / Esc

Printer-friendly Version

Interactive Discussion



Chandra, S., Ziemke, J. R., Duncan, B. N., Diehl, T. L., Livesey, N. J., and Froidevaux, L.: Effects of the 2006 El Niño on tropospheric ozone and carbon monoxide: implications for dynamics and biomass burning, *Atmos. Chem. Phys.*, 9, 4239–4249, doi:10.5194/acp-9-4239-2009, 2009.

5 Clerbaux, C., Boynard, A., Clarisse, L., George, M., Hadji-Lazaro, J., Herbin, H., Hurtmans, D., Pommier, M., Razavi, A., Turquety, S., Wespes, C., and Coheur, P.-F.: Monitoring of atmospheric composition using the thermal infrared IASI/MetOp sounder, *Atmos. Chem. Phys.*, 9, 6041–6054, doi:10.5194/acp-9-6041-2009, 2009.

10 Cuesta, J., Eremenko, M., Liu, X., Dufour, G., Cai, Z., Höpfner, M., von Clarmann, T., Sellitto, P., Foret, G., Gaubert, B., Beekmann, M., Orphal, J., Chance, K., Spurr, R., and Flaud, J.-M.: Satellite observation of lowermost tropospheric ozone by multispectral synergism of IASI thermal infrared and GOME-2 ultraviolet measurements over Europe, *Atmos. Chem. Phys.*, 13, 9675–9693, doi:10.5194/acp-13-9675-2013, 2013.

15 Ebojje, F., von Savigny, C., Ladstätter-Weissenmayer, A., Rozanov, A., Weber, M., Eichmann, K., Bötzel, S., Rahpoe, N., Bovensmann, H., and Burrows, J. P.: Tropospheric column amount of ozone retrieved from SCIAMACHY limb-nadir-matching observations, *Atmos. Meas. Tech. Discuss.*, 6, 7811–7865, doi:10.5194/amtd-6-7811-2013, 2013.

20 Folkens, I., Loewenstein, M., Podolske, J., Oltmans, S., and Proffitt, M.: A barrier to vertical mixing at 14 km in the tropics: evidence from ozonesondes and aircraft measurements, *J. Geophys. Res.*, 104, 22095–22101, 1999.

Foster, P. M. and Shine, K. P.: Radiative forcing and temperature trends from stratospheric ozone changes, *J. Geophys. Res.*, 102, 10841–10856, 1997.

Fueglistaler, S., Dessler, A. E., Dunkerton, T. J., Folkens, I., Fu, Q., and Mote, P. W.: Tropical tropopause layer, *Rev. Geophys.*, 47, RG1004, doi:10.1029/2008RG000267, 2009.

25 Hao, N., Koukoulis, M., Inness, A., Valks, P., Loyola, D., Zimmer, W., Balis, D., Zyrichidou, I., Van Roozendaal, M., Lerot, C., and Spurr, R. J. D.: GOME-2 total ozone columns from MetOp-A/MetOp-B and assimilation in the MACC system, *Atmos. Meas. Tech. Discuss.*, submitted, 2014.

30 Heinen, T., Kiemle, S., Buckl, B., Mikusch, E., and Loyola, D.: The geospatial service infrastructure for DLR's national remote sensing data library, *IEEE J. Sel. Top. Appl.*, 2, 260–269, 2009.

Jöckel, P., Tost, H., Pozzer, A., Brühl, C., Buchholz, J., Ganzeveld, L., Hoor, P., Kerkweg, A., Lawrence, M. G., Sander, R., Steil, B., Stiller, G., Tanarhte, M., Taraborrelli, D.,

## Tropical tropospheric ozone column retrieval for GOME-2

P. Valks et al.

Title Page

Abstract

Introduction

Conclusions

References

Tables

Figures

◀

▶

◀

▶

Back

Close

Full Screen / Esc

Printer-friendly Version

Interactive Discussion



van Aardenne, J., and Lelieveld, J.: The atmospheric chemistry general circulation model ECHAM5/MESSy1: consistent simulation of ozone from the surface to the mesosphere, *Atmos. Chem. Phys.*, 6, 5067–5104, doi:10.5194/acp-6-5067-2006, 2006.

Jöckel, P., Kerkweg, A., Pozzer, A., Sander, R., Tost, H., Riede, H., Baumgaertner, A., Gro-  
5 mov, S., and Kern, B.: Development cycle 2 of the Modular Earth Submodel System (MESSy2), *Geosci. Model Dev.*, 3, 717–752, doi:10.5194/gmd-3-717-2010, 2010.

Joiner, J., Vasilkov, A. P., Gupta, P., Bhartia, P. K., Veefkind, P., Sneep, M., de Haan, J., Polon-  
sky, I., and Spurr, R.: Fast simulators for satellite cloud optical centroid pressure retrievals;  
10 evaluation of OMI cloud retrievals, *Atmos. Meas. Tech.*, 5, 529–545, doi:10.5194/amt-5-529-2012, 2012.

Kerkweg, A., Buchholz, J., Ganzeveld, L., Pozzer, A., Tost, H., and Jöckel, P.: Technical  
Note: An implementation of the dry removal processes DRY DEPosition and SEDImentation  
in the Modular Earth Submodel System (MESSy), *Atmos. Chem. Phys.*, 6, 4617–4632,  
doi:10.5194/acp-6-4617-2006, 2006a.

Kerkweg, A., Sander, R., Tost, H., and Jöckel, P.: Technical note: Implementation of prescribed  
15 (OFFLEM), calculated (ONLEM), and pseudo-emissions (TNUDGE) of chemical species  
in the Modular Earth Submodel System (MESSy), *Atmos. Chem. Phys.*, 6, 3603–3609,  
doi:10.5194/acp-6-3603-2006, 2006b.

Kokhanovsky, A. and Rozanov, V.: The uncertainties of satellite DOAS total ozone retrieval for  
20 a cloudy sky, *Atmos. Res.*, 87, 27–36, 2008.

Lacis, A. A., Wuebbles, D. J., and Logan, J. A. A.: Radiative forcing of climate by changes in  
the vertical distributions of ozone, *J. Geophys. Res.*, 95, 9971–9981, 1990.

Lamarque, J.-F., Bond, T. C., Eyring, V., Granier, C., Heil, A., Klimont, Z., Lee, D., Liousse, C.,  
Mieville, A., Owen, B., Schultz, M. G., Shindell, D., Smith, S. J., Stehfest, E., Van Aar-  
denne, J., Cooper, O. R., Kainuma, M., Mahowald, N., McConnell, J. R., Naik, V., Riahi, K.,  
25 and van Vuuren, D. P.: Historical (1850–2000) gridded anthropogenic and biomass burn-  
ing emissions of reactive gases and aerosols: methodology and application, *Atmos. Chem.  
Phys.*, 10, 7017–7039, doi:10.5194/acp-10-7017-2010, 2010.

Lee, S., Shelow, D. M., Thompson, A. M., and Miller, S. K.: QBO and ENSO variability  
30 in temperature and ozone from SHADOZ, 1998–2005, *J. Geophys. Res.*, 115, D18105,  
doi:10.1029/2009JD013320, 2010.

## Tropical tropospheric ozone column retrieval for GOME-2

P. Valks et al.

Title Page

Abstract

Introduction

Conclusions

References

Tables

Figures

◀

▶

◀

▶

Back

Close

Full Screen / Esc

Printer-friendly Version

Interactive Discussion



- Levelt, P. F., van den Oord, G. H. J., Dobber, M. R., Mälkki, A., Visser, H., de Vries, J., Stammes, P., Lundell, J. O. V., and Saari, H.: The Ozone Monitoring Instrument, *IEEE T. Geosci. Remote*, 44, 1093–1101, doi:10.1109/TGRS.2006.872333, 2006.
- 5 Liu, X., Bhartia, P. K., Chance, K., Spurr, R. J. D., and Kurosu, T. P.: Ozone profile retrievals from the Ozone Monitoring Instrument, *Atmos. Chem. Phys.*, 10, 2521–2537, doi:10.5194/acp-10-2521-2010, 2010.
- Loyola, D., Thomas, W., Livschitz, Y., Ruppert, T., Albert, P., and Hollmann, R.: Cloud properties derived from GOME/ERS-2 backscatter data for trace gas retrieval, *IEEE T. Geosci. Remote*, 45, 2747–2758, 2007.
- 10 Loyola, D., Coldewey-Egbers, M., Dameris, M., Garny, H., Stenke, A., Van Roozendael, M., Lerot, C., Balis, D., and Koukouli, M.: Global long-term monitoring of the ozone layer – a prerequisite for predictions, *Int. J. Remote Sens.*, 30, 4295–4318, doi:10.1080/01431160902825016, 2009.
- Loyola, D., Thomas, W., Spurr, R., and Mayer, B.: Global patterns in daytime cloud properties derived from GOME backscatter UV-VIS measurements, *Int. J. Remote Sens.*, 31, 4295–4318, 2010.
- 15 Loyola, D., Koukouli, M. E., Valks, P., Balis, D. S., Hao, N., Van Roozendael, M., Spurr, R. J. D., Zimmer, W., Kiemle, S., Lerot, C., and Lambert, J.-C.: The GOME-2 total column ozone product: retrieval algorithm and ground-based validation, *J. Geophys. Res.*, 116, D07302, doi:10.1029/2010JD014675, 2011.
- 20 Malicet, C., Daumont, D., Charbonnier, J., Parisse, C., Chakir, A., and Brion, J.: Ozone UV spectroscopy, II. Absorption cross-sections and temperature dependence, *J. Atmos. Chem.*, 21, 263–273, 1995.
- Martin, R. V., Sauvage, B., Folkins, I., Sioris, C. E., Boone, C., Bernath, P., and Ziemke, J.: Space-based constraints on the production of nitric oxide by lightning, *J. Geophys. Res.*, 25 112, D09309, doi:10.1029/2006JD007831, 2007.
- McPeters, R. D., Labow, G. J., and Logan, J. A.: Ozone climatological profiles for satellite retrieval algorithms, *J. Geophys. Res.*, 112, D05308, doi:10.1029/2005JD006823, 2007.
- Miles, G., et al.: Validation of GOME-2 tropospheric ozone profiles derived using optimal estimation, *Atmos. Meas. Tech. Discuss.*, in preparation, 2014.
- 30 Munro, R., Eisinger, M., Anderson, C., Callies, J., Corpaccioli, E., Lang, R., Lefebvre, A., Livschitz, Y., and Perez Albinana, A.: GOME-2 on MetOp: from in-orbit verification to routine

## Tropical tropospheric ozone column retrieval for GOME-2

P. Valks et al.

Title Page

Abstract

Introduction

Conclusions

References

Tables

Figures

◀

▶

◀

▶

Back

Close

Full Screen / Esc

Printer-friendly Version

Interactive Discussion



operations, in: Proceedings of EUMETSAT Meteorological Satellite Conference, Helsinki, Finland, 12–16 June 2006, 2006.

Oman, L., Ziemke, J., Douglass, A., Waugh, D., Lang, C., Rodriguez, J., and Nielsen, J.: The response of tropical tropospheric ozone to ENSO, *Geophys. Res. Lett.*, 38, L13706, doi:10.1029/2011GL047865, 2011.

Oman, L., Douglass, A., Ziemke, J., Rodriguez, J., Waugh, D., and Nielsen, J.: The ozone response to ENSO in Aura satellite measurements and a chemistry-climate simulation, *J. Geophys. Res.*, 118, 965–976, doi:10.1029/2012JD018546, 2013.

Platt, U. and Stutz, J.: *Differential Optical Absorption Spectroscopy, Principles and Applications, Physics of Earth and Space Environments*, Springer, ISBN 978-3-540-21193-8, 2008.

Pozzer, A., Jöckel, P., Tost, H., Sander, R., Ganzeveld, L., Kerkweg, A., and Lelieveld, J.: Simulating organic species with the global atmospheric chemistry general circulation model ECHAM5/MESSy1: a comparison of model results with observations, *Atmos. Chem. Phys.*, 7, 2527–2550, doi:10.5194/acp-7-2527-2007, 2007.

Roeckner, E., Brokopf, R., Esch, M., Giorgetta, M., Hagemann, S., Kornblueh, L., Manzini, E., Schlese, U., and Schulzweida, U.: Sensitivity of simulated climate to horizontal and vertical resolution in the ECHAM5 atmosphere model, *J. Climate*, 19, 3771–3791, 2006.

Rossow, W. B. and Schiffer, R. A.: *Advances in understanding clouds from ISCCP*, *B. Am. Meteorol. Soc.*, 80, 2261–2287, 1999.

Safieddine, S., Clerbaux, C., George, M., Hadji-Lazaro, J., Hurtmans, D., Coheur, P.-F., Wespes, C., Loyola, D., Valks, P., and Hao, N.: Tropospheric ozone and nitrogen dioxide measurements in urban and rural regions as seen by IASI and GOME-2, *J. Geophys. Res.*, 118, 10555–10566, 2013.

Sander, R., Baumgaertner, A., Gromov, S., Harder, H., Jöckel, P., Kerkweg, A., Kubistin, D., Regelin, E., Riede, H., Sandu, A., Taraborrelli, D., Tost, H., and Xie, Z.-Q.: The atmospheric chemistry box model CAABA/MECCA-3.0, *Geosci. Model Dev.*, 4, 373–380, doi:10.5194/gmd-4-373-2011, 2011.

Sauvage, B., Martin, R. V., van Donkelaar, A., and Ziemke, J. R.: Quantification of the factors controlling tropical tropospheric ozone and the South Atlantic maximum, *J. Geophys. Res.*, 112, D11309, doi:10.1029/2006JD008008, 2007.

Siddans, R., Latter, B. G., Kerridge, B. J., Smeets, J., Otter, G., and Slijkhuis, S.: *Analysis of GOME-2 Slit Function Measurements: Final Report Eumetsat Contract No. EUM/CO/04/1298/RM*, 2006.

## Tropical tropospheric ozone column retrieval for GOME-2

P. Valks et al.

Title Page

Abstract

Introduction

Conclusions

References

Tables

Figures

◀

▶

◀

▶

Back

Close

Full Screen / Esc

Printer-friendly Version

Interactive Discussion



Solomon, S., Thompson, D. W. J., Portmann, R. W., Oltmans, S. J., and Thompson, A. M.: On the distribution and variability of ozone in the tropical upper troposphere: implications for tropical deep convection and chemical-dynamical coupling, *Geophys. Res. Lett.*, 32, L23813, doi:10.1029/2005GL024323, 2005.

5 Spurr, R.: LIDORT and VLIDORT: linearized pseudo-spherical scalar and vector discrete ordinate radiative transfer models for use in remote sensing retrieval problems, in: *Light Scattering Reviews*, vol. 3, edited by: Kokhanovsky, A., Springer, 2008.

Thompson, A. M.: The oxidizing capacity of the earth's atmosphere: probable past and future changes, *Science*, 256, 1157–1165, 1992.

10 Thompson, A. M., Witte, J. C., Hudson, R. D., Guo, H., Herman, J. R., and Fujiwara, M.: Tropical tropospheric ozone and biomass burning, *Science*, 291, 2128–2132, 2001.

Thompson, A. M., Witte, J. C., McPeters, R. D., Oltmans, S. J., Schmidlin, F. J., Logan, J. A., Fujiwara, M., Kirchhoff, V. W. J. H., Posny, F., Coetzee, G. J. R., Hoegger, B., Kawakami, S., Ogawa, T., Johnson, B. J., Vömel H., and Labow, G.: Southern Hemisphere Additional Ozonesondes (SHADOZ) 1998–2000 tropical ozone climatology: 1. Comparison with Total Ozone Mapping Spectrometer (TOMS) and ground-based measurements, *J. Geophys. Res.*, 108, 8238, doi:10.1029/2001JD000967, 2003a.

Thompson, A. M., Witte, J. C., Oltmans, S. J., Schmidlin, F. J., Logan, J. A., Coetzee, G. J. R., Hoegger, B., Kirchhoff, V. W. J. H., Ogawa, T., Kawakami, S., Posny, F., Fortuin, J. P. F., Kelder, H. M., and Fujiwara, M.: Southern Hemisphere Additional Ozonesondes (SHADOZ) 1998–2000 tropical ozone climatology: 2. Tropospheric variability and the zonal wave-one, *J. Geophys. Res.*, 108, 8241, doi:10.1029/2002JD002241, 2003b.

20 Tost, H., Jöckel, P., Kerkweg, A., Sander, R., and Lelieveld, J.: Technical note: A new comprehensive SCAVenging submodel for global atmospheric chemistry modelling, *Atmos. Chem. Phys.*, 6, 565–574, doi:10.5194/acp-6-565-2006, 2006.

Tuinder, O., van Oss, R., de Haan, J., and Delcloo, A.: Algorithm Theoretical Basis Document for the NRT and Off-line GOME-2 Ozone Profile Products, O3MSAF/KNMI/ATBD/001, Iss.1.15, available at: [http://o3msaf.fmi.fi/docs/atbd/Algorithm\\_Theoretical\\_Basis\\_Document\\_NOP\\_OOP\\_Jun\\_2013.pdf](http://o3msaf.fmi.fi/docs/atbd/Algorithm_Theoretical_Basis_Document_NOP_OOP_Jun_2013.pdf) (last access: 24 January 2014), June 2013.

30 Valks, P. J. M., Koelemeijer, R. B. A., van Weele, M., van Velthoven, P., Fortuin, J. P. F., and Kelder, H.: Variability in tropical tropospheric ozone: analysis with Global Ozone Monitoring Experiment observations and a global model, *J. Geophys. Res.*, 108, 4328, doi:10.1029/2002JD002894, 2003.

## Tropical tropospheric ozone column retrieval for GOME-2

P. Valks et al.

Title Page

Abstract

Introduction

Conclusions

References

Tables

Figures

◀

▶

◀

▶

Back

Close

Full Screen / Esc

Printer-friendly Version

Interactive Discussion



Valks, P., Pinardi, G., Richter, A., Lambert, J.-C., Hao, N., Loyola, D., Van Roozendael, M., and Emmadi, S.: Operational total and tropospheric NO<sub>2</sub> column retrieval for GOME-2, *Atmos. Meas. Tech.*, 4, 1491–1514, doi:10.5194/amt-4-1491-2011, 2011.

Valks, P., Loyola, D., Hao, N., Rix, M., and Slijkhuis, S.: Algorithm Theoretical Basis Document for GOME-2 Total Column Products of Ozone, Minor Trace Gases and Cloud Properties (GDP 4.7 for O3M-SAF OTO and NTO), DLR/GOME-2/ATBD/01, Iss./Rev.: 2/H, available at: [http://o3msaf.fmi.fi/docs/atbd/Algorithm\\_Theoretical\\_Basis\\_Document\\_NTO\\_OTO\\_May\\_2013.pdf](http://o3msaf.fmi.fi/docs/atbd/Algorithm_Theoretical_Basis_Document_NTO_OTO_May_2013.pdf) (last access: 24 January 2014), May 2013.

van der Werf, G. R., Randerson, J. T., Giglio, L., Collatz, G. J., Mu, M., Kasibhatla, P. S., Morton, D. C., DeFries, R. S., Jin, Y., and van Leeuwen, T. T.: Global fire emissions and the contribution of deforestation, savanna, forest, agricultural, and peat fires (1997–2009), *Atmos. Chem. Phys.*, 10, 11707–11735, doi:10.5194/acp-10-11707-2010, 2010.

Van Roozendael, M., Loyola, D., Spurr, R., Balis, D., Lambert, J.-C., Livschitz, Y., Valks, P., Ruppert, T., Kenter, P., and Fayt, C.: Reprocessing the 10-year GOME/ERS-2 total ozone record for trend analysis: the new GOME Data Processor Version 4.0, Algorithm Description, *J. Geophys. Res.*, 111, D14311, doi:10.1029/2005JD006375, 2006.

Waliser, D. E. and Gautier, C.: A Satellite-derived Climatology of the ITCZ, *J. Climate*, 6, 2162–2174, 1993.

Waters, J. W., Froidevaux, L., Harwood, R. S., Jarnot, R. F., Pickett, H. M., Read, W. G., Siegel, P. H., Cofield, R. E., Filipiak, M. J., Flower, D. A., Holden, J. R., Lau, G. K., Livesey, N. J., Manney, G. L., Pumphrey, H. C., Santee, M. L., Wu, D. L., Cuddy, D. T., Lay, R. R., Loo, M. S., Perun, V. S., Schwartz, M. J., Stek, P. C., Thurstans, R. P., Boyles, M. A., Chandra, K. M., Chavez, M. C., Chen, G.-S., Chudasama, B. V., Dodge, R., Fuller, R. A., Girard, M. A., Jiang, J. H., Jiang, Y., Knosp, B. W., LaBelle, R. C., Lam, J. C., Lee, K. A., Miller, C., Oswald, J. E., Patel, N. C., Pukala, D. M., Quintero, O., Scaff, D. M., Van Snyder, W., Tope, M. C., Wagner, P. A., and Walch, M. J.: The Earth Observing System Microwave Limb Sounder (EOS MLS) on the Aura satellite, *IEEE T. Geosci. Remote*, 44, 1075–1092, 2006.

Ziemke, J. R., Chandra, S., and Bhartia, P. K.: Two new methods for deriving tropospheric column ozone from TOMS measurements: the assimilated UARS MLS/HALOE and convective-cloud differential techniques, *J. Geophys. Res.*, 103, 22115–22127, 1998.

Ziemke, J. R., Chandra, S., and Bhartia, P. K.: A 25 yr data record of atmospheric ozone in the Pacific from Total Ozone Mapping Spectrometer (TOMS) cloud slicing: implications

for ozone trends in the stratosphere and troposphere, *J. Geophys. Res.*, 110, D15105, doi:10.1029/2004JD005687, 2005.

Ziemke, J. R., Chandra, S., Duncan, B. N., Froidevaux, L., Bhartia, P. K., Levelt, P. F., and Waters, J. W.: Tropospheric ozone determined from Aura OMI and MLS: evaluation of measurements and comparison with the Global Modeling Initiative's Chemical Transport Model, *J. Geophys. Res.*, 111, D19303, doi:10.1029/2006JD007089, 2006.

Ziemke, J. R., Joiner, J., Chandra, S., Bhartia, P. K., Vasilkov, A., Haffner, D. P., Yang, K., Schoeberl, M. R., Froidevaux, L., and Levelt, P. F.: Ozone mixing ratios inside tropical deep convective clouds from OMI satellite measurements, *Atmos. Chem. Phys.*, 9, 573–583, doi:10.5194/acp-9-573-2009, 2009a.

Ziemke, J. R., Chandra, S., Duncan, B. N., Schoeberl, M. R., Torres, O., Damon, M. R., and Bhartia, P. K.: Recent biomass burnings in the tropics and related changes in tropospheric ozone, *Geophys. Res. Lett.*, 36, L15819, doi:10.1029/2009GL039303, 2009b.

Ziemke, J. R., Chandra, S., Oman, L. D., and Bhartia, P. K.: A new ENSO index derived from satellite measurements of column ozone, *Atmos. Chem. Phys.*, 10, 3711–3721, doi:10.5194/acp-10-3711-2010, 2010.

## AMTD

7, 727–768, 2014

### Tropical tropospheric ozone column retrieval for GOME-2

P. Valks et al.

Title Page

Abstract

Introduction

Conclusions

References

Tables

Figures

◀

▶

◀

▶

Back

Close

Full Screen / Esc

Printer-friendly Version

Interactive Discussion



## Tropical tropospheric ozone column retrieval for GOME-2

P. Valks et al.

**Table 1.** Statistical comparison between GOME-2 and ozonesonde TOCs based on monthly ensemble averages for eight SHADOZ sites. Included for each site are the measurement period, the mean TOC from GOME-2 and the ozonesondes, the bias and RMS difference between the two, and the correlation coefficient  $R$ . The ozone column values are in DU.

Ozonesonde site	Period	GOME-2	Sonde	Bias	Diff RMS	$R$
Samoa (14° S, 171° W)	01.07–12.12	16.3	18.0	−1.7	3.6	0.75
Hilo (20° N, 155° W)	01.07–12.12	28.2	26.1	+2.1	4.7	0.81
Natal (5° S, 35° W)	01.07–05.11	26.0	26.9	−0.9	3.4	0.89
Ascension Isl. (8° S, 14° W)	01.07–07.10	29.4	30.8	−1.4	3.9	0.85
Nairobi (1° S, 37° E)	01.07–12.12	23.4	21.8	+1.6	3.3	0.61
La Reunion (21° S, 55° E)	07.07–12.12	24.4	28.7	−4.3	6.2	0.73
Kuala Lumpur (3° N, 102° E)	01.07–04.10	17.1	18.9	−1.8	3.2	0.32
Watakosek (8° S, 113° E)	01.07–12.12	17.1	20.8	−3.7	5.6	0.54

Title Page

Abstract

Introduction

Conclusions

References

Tables

Figures

◀

▶

◀

▶

Back

Close

Full Screen / Esc

Printer-friendly Version

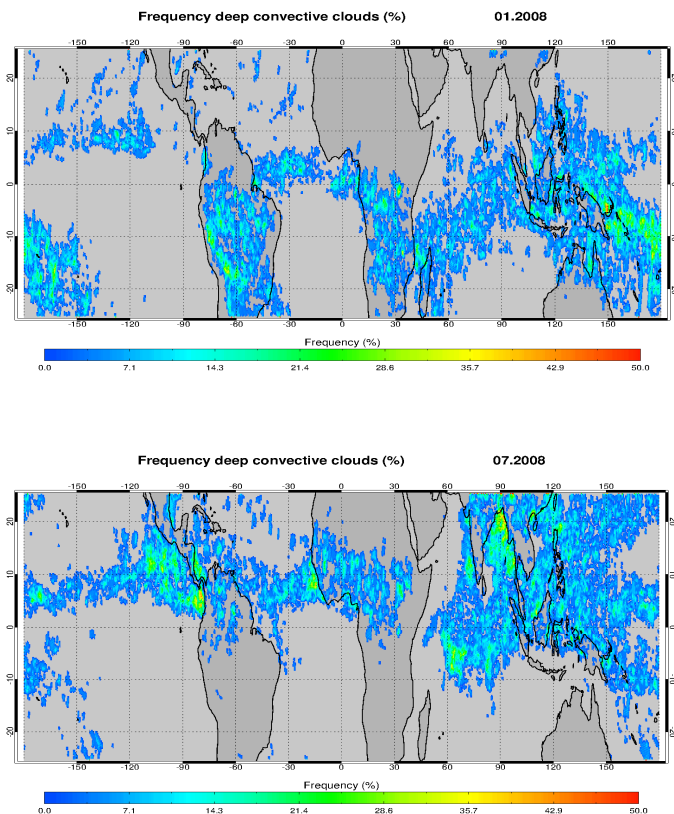
Interactive Discussion





## Tropical tropospheric ozone column retrieval for GOME-2

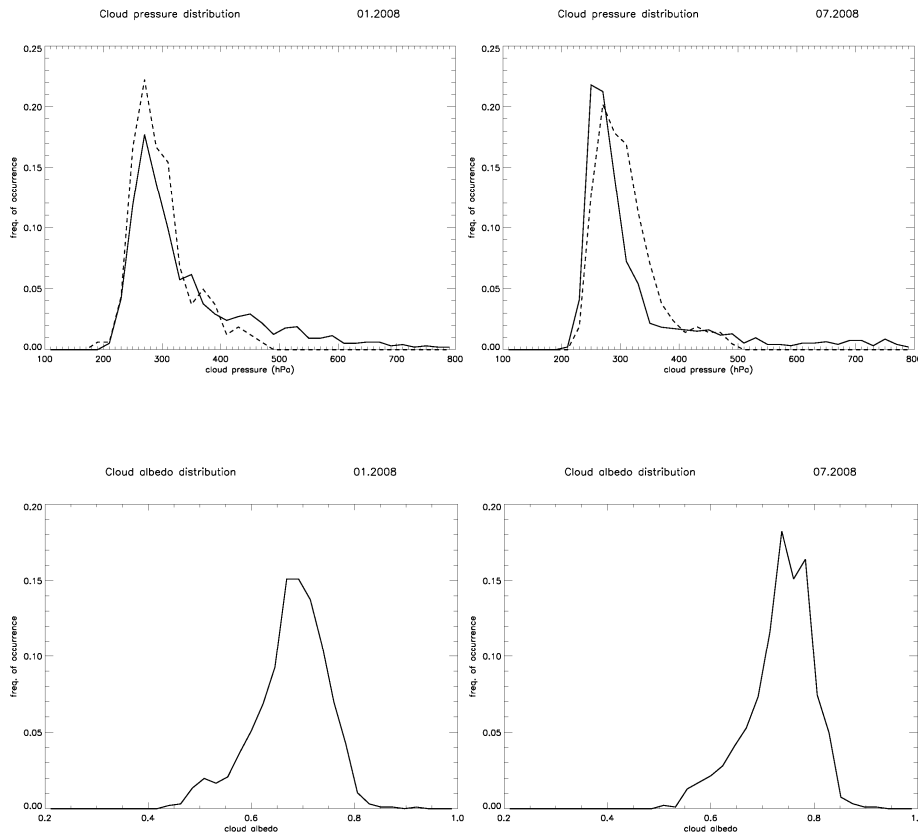
P. Valks et al.



**Fig. 1.** Frequency of occurrence of deep-convective clouds as derived from GOME-2 oxygen A band measurements using the OCRA/ROCINN algorithm. Results are shown for (top) January 2008 and (bottom) July 2008. Clouds are classified as deep convective if their tops are above the 300 hPa level, the cloud albedo larger than 0.75, and their cloud fraction exceeds 0.8.

Tropical tropospheric  
ozone column  
retrieval for GOME-2

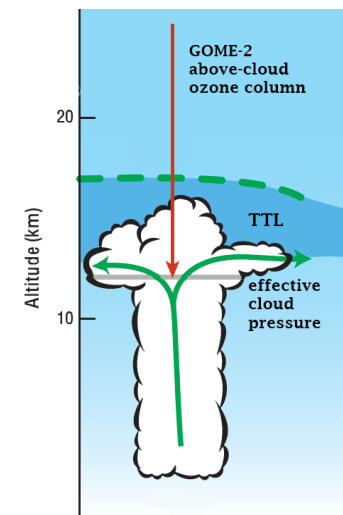
P. Valks et al.



**Fig. 2.** Histograms of ROCINN cloud pressures (top) and cloud albedos (bottom) for the area  $12.5^{\circ}\text{S}$ – $12.5^{\circ}\text{N}/70^{\circ}\text{E}$ – $170^{\circ}\text{W}$ . Cloud top pressure from ISCCP-D2 have been plotted as well (dashed line). The ROCINN and ISCCP cloud data have been spatially averaged on a  $2.5^{\circ}$  latitude by  $2.5^{\circ}$  longitude grid, and then the relative number of grid cells has been plotted as a function of cloud pressure and cloud albedo. Results are shown for (left) January 2008 and (right) July 2008.

## Tropical tropospheric ozone column retrieval for GOME-2

P. Valks et al.

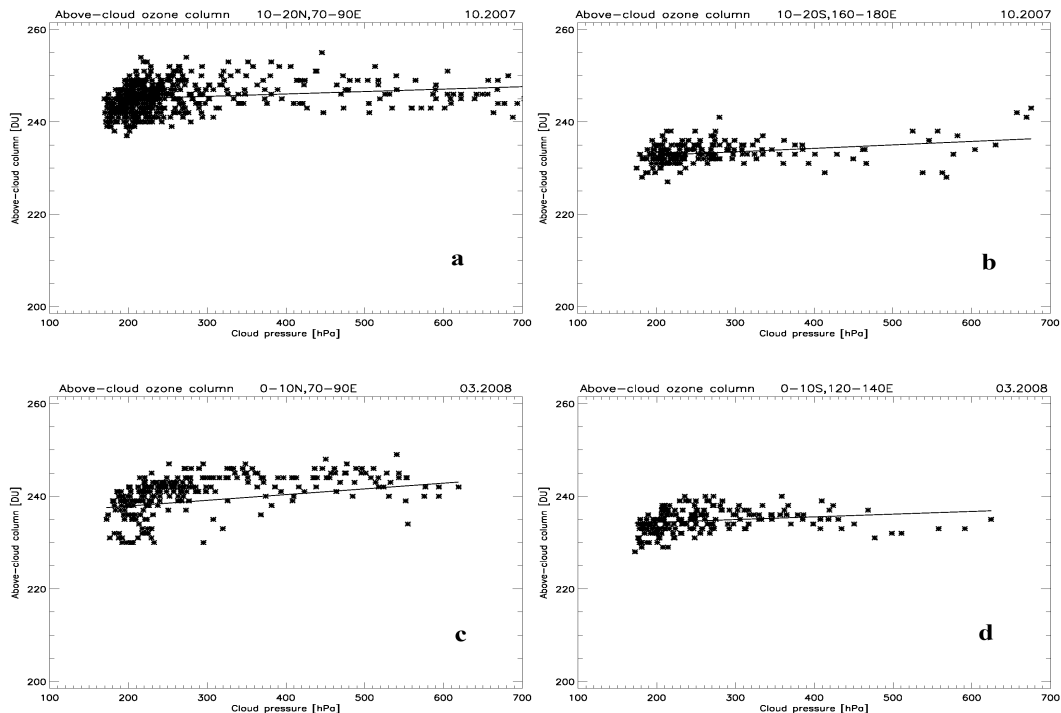


**Fig. 3.** Schematic illustration of above-cloud ozone column measurements from GOME-2 for the tropics as used in the CCD technique. For tropical deep convective clouds, the effective cloud pressures as determined with GOME-2 are usually between 9.5–12.5 km. TTL denotes the tropical transition layer below the tropopause (dashed green line). GOME-2 measurements with cloud fraction  $\geq 0.8$ , cloud albedo  $\geq 0.75$  and cloud pressure  $\leq 300$  hPa are used to determine the above-cloud ozone column.

[Title Page](#)[Abstract](#)[Introduction](#)[Conclusions](#)[References](#)[Tables](#)[Figures](#)[◀](#)[▶](#)[◀](#)[▶](#)[Back](#)[Close](#)[Full Screen / Esc](#)[Printer-friendly Version](#)[Interactive Discussion](#)

Tropical tropospheric  
ozone column  
retrieval for GOME-2

P. Valks et al.



**Fig. 4.** Scatter plot of the GOME-2 ozone column above highly reflective clouds (cloud albedo  $\geq 0.75$ ) as a function of the GOME-2 cloud-top pressure (as provided by ROCINN) for 1–3 October 2007 (top) and 1–3 March 2008 (bottom). The regions are: 10–20° N/70–90° E (**a**), 10–20° S/160–180° E (**b**), 0–10° N/70–90° E (**c**) and 0–10° S/120–140° E (**d**). From the regression fittings, mean ozone concentrations of 4–7 ppbv are found in the middle-to-upper troposphere of these regions.

Title Page

Abstract

Introduction

Conclusions

References

Tables

Figures

◀

▶

◀

▶

Back

Close

Full Screen / Esc

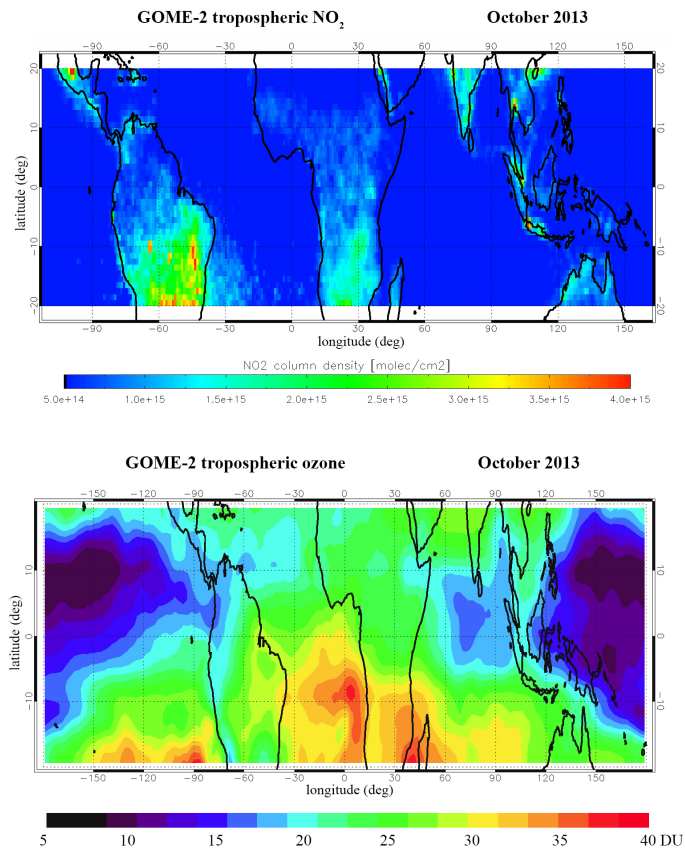
Printer-friendly Version

Interactive Discussion



Tropical tropospheric  
ozone column  
retrieval for GOME-2

P. Valks et al.

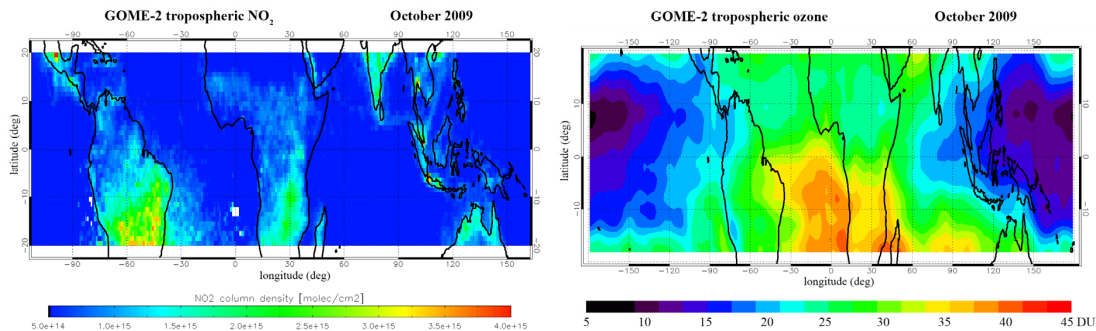


**Fig. 5.** Tropospheric NO<sub>2</sub> (top) and ozone columns (bottom) as measured by GOME-2/MetOp-B for October 2013.

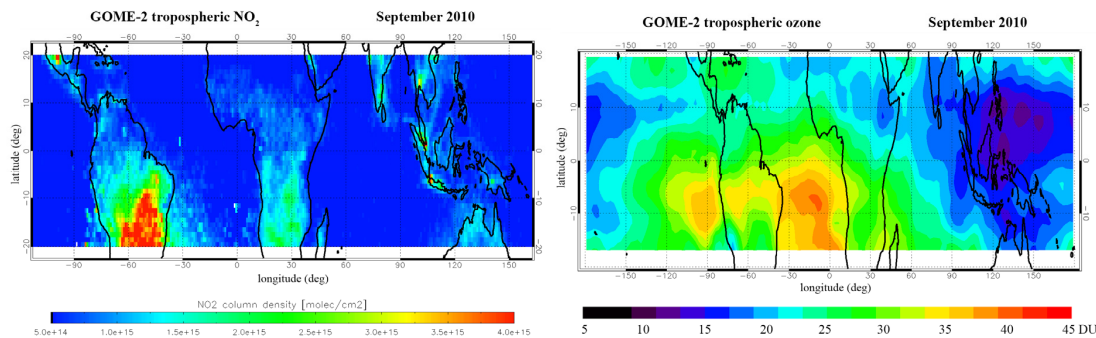
## Tropical tropospheric ozone column retrieval for GOME-2

P. Valks et al.

### October 2009



### September 2010



**Fig. 6.** Tropospheric NO<sub>2</sub> (left) and ozone columns (right) as measured by GOME-2/MetOp-A in October 2009 (top) and September 2010 (bottom).

[Title Page](#)

[Abstract](#) | [Introduction](#)

[Conclusions](#) | [References](#)

[Tables](#) | [Figures](#)

[◀](#) | [▶](#)

[◀](#) | [▶](#)

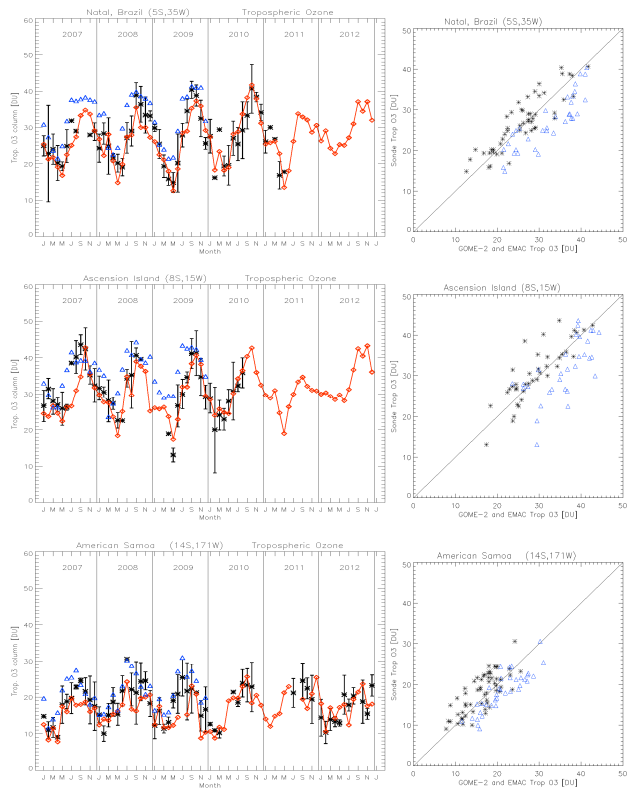
[Back](#) | [Close](#)

[Full Screen / Esc](#)

[Printer-friendly Version](#)

[Interactive Discussion](#)





**Fig. 7.** Tropospheric ozone columns for (top) Natal ( $5^{\circ}$  S,  $35^{\circ}$  W), (middle) Ascension ( $8^{\circ}$  S,  $14^{\circ}$  W) and (bottom) Samoa ( $14^{\circ}$  S,  $171^{\circ}$  W) for the period January 2007–December 2012. The asterisks denote the integrated ozonesonde measurements (monthly ensemble average) with  $1\sigma$  error bars. The red diamonds denote the tropospheric ozone columns derived with the GOME-2/CCD method; the blue triangles are tropospheric ozone columns from the EMAC model (see Sect. 7). Scatter plots of ozonesonde vs. GOME-2 (black) and EMAC (blue) monthly mean TOCs for the three sites are shown on the right.

Tropical tropospheric ozone column retrieval for GOME-2

P. Valks et al.

Title Page

Abstract

Introduction

Conclusions

References

Tables

Figures

◀

▶

◀

▶

Back

Close

Full Screen / Esc

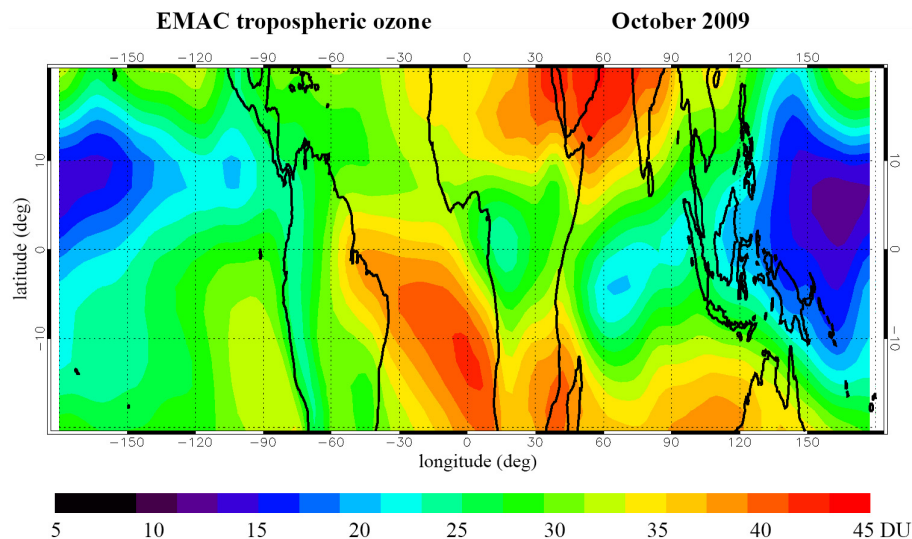
Printer-friendly Version

Interactive Discussion



**Tropical tropospheric  
ozone column  
retrieval for GOME-2**

P. Valks et al.

**Fig. 8.** Tropospheric ozone columns calculated with the EMAC model for October 2009.

Title Page

Abstract

Introduction

Conclusions

References

Tables

Figures



Back

Close

Full Screen / Esc

Printer-friendly Version

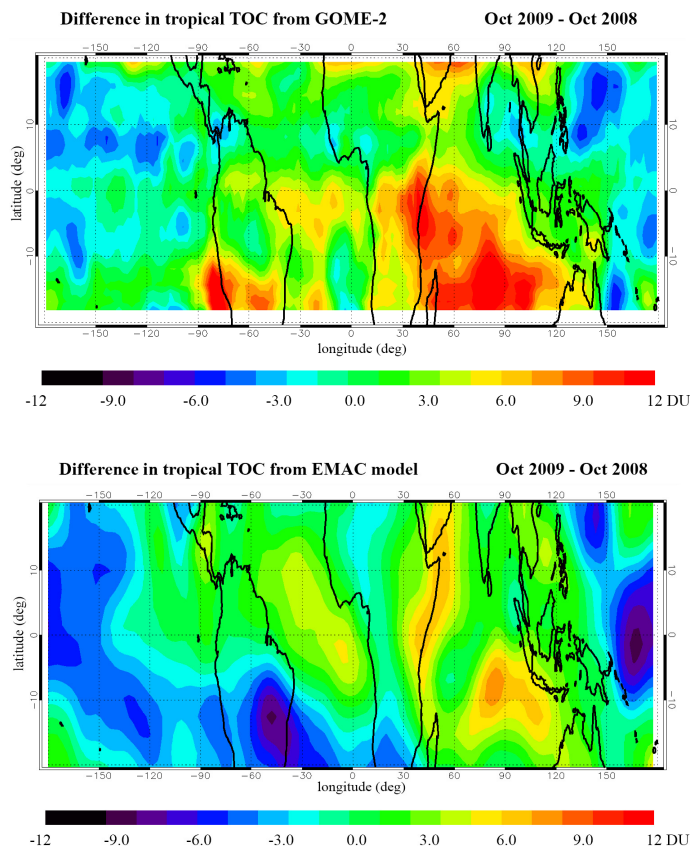
Interactive Discussion





Tropical tropospheric  
ozone column  
retrieval for GOME-2

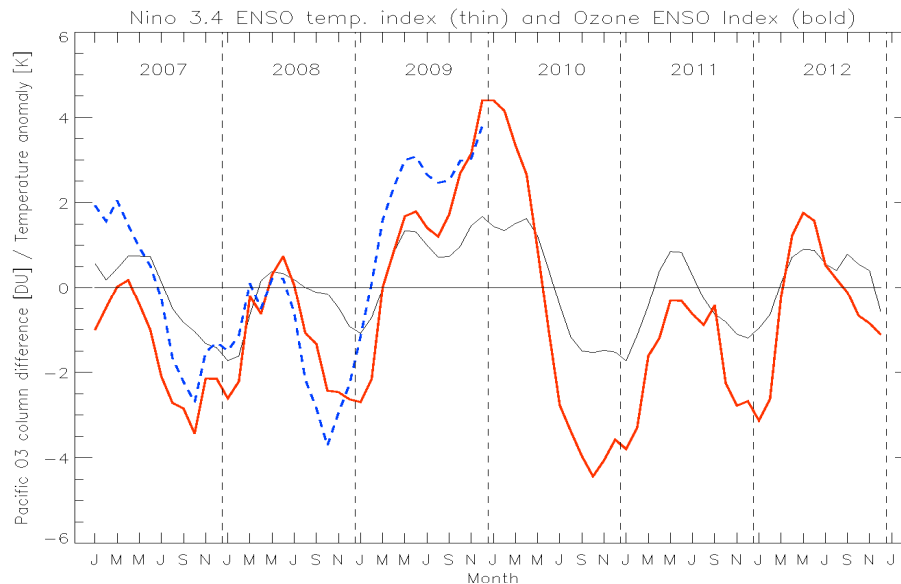
P. Valks et al.



**Fig. 9.** Difference between the tropical TOC in October 2009 and 2008: (top) difference in the TOC derived with the GOME-2/CCD method and (bottom) difference in the TOC calculated with the EMAC model.

## Tropical tropospheric ozone column retrieval for GOME-2

P. Valks et al.



**Fig. 10.** Time series of the Ozone ENSO Index (bold lines) vs. Nino 3.4 SST index (thin black line). The solid red line denotes the OEI derived from the GOME-2 TOC data, the dashed blue line shows the OEI derived from EMAC simulations.

Title Page

Abstract

Introduction

Conclusions

References

Tables

Figures

◀

▶

◀

▶

Back

Close

Full Screen / Esc

Printer-friendly Version

Interactive Discussion

