



**Generation of  
BAROCLIM and its  
use in RO retrievals**

B. Scherllin-Pirscher  
et al.

# Generation of a Bending Angle Radio Occultation Climatology (BAROCLIM) and its use in radio occultation retrievals

B. Scherllin-Pirscher<sup>1</sup>, S. Syndergaard<sup>2</sup>, U. Foelsche<sup>1</sup>, and K. B. Lauritsen<sup>2</sup>

<sup>1</sup>Wegener Center for Climate and Global Change (WEGC) and Institute for Geophysics, Astrophysics, and Meteorology/Institute of Physics (IGAM/IP), University of Graz, Graz, Austria

<sup>2</sup>Danish Meteorological Institute, Copenhagen, Denmark

Received: 24 July 2014 – Accepted: 25 July 2014 – Published: 8 August 2014

Correspondence to: B. Scherllin-Pirscher (barbara.pirscher@uni-graz.at)

Published by Copernicus Publications on behalf of the European Geosciences Union.

Title Page

Abstract

Introduction

Conclusions

References

Tables

Figures



Back

Close

Full Screen / Esc

Printer-friendly Version

Interactive Discussion



## Abstract

In this paper, we introduce a bending angle radio occultation climatology (BAROCLIM) based on Formosat-3/COSMIC (F3C) data. This climatology represents the monthly-mean atmospheric state from 2006 to 2012. Bending angles from radio occultation (RO) measurements are obtained from the accumulation of the change in the ray-path direction of Global Positioning System (GPS) signals. Best quality of these near-vertical profiles is found from the middle troposphere up to the mesosphere. Beside RO bending angles we also use data from the Mass Spectrometer and Incoherent Scatter Radar (MSIS) model to expand BAROCLIM in a spectral model, which (theoretically) reaches from the surface up to infinity. Due to the very high quality of BAROCLIM up to the mesosphere, it can be used to detect deficiencies in current state-of-the-art analysis and reanalysis products from numerical weather prediction (NWP) centers. For bending angles derived from European Centre for Medium-Range Weather Forecasts (ECMWF) analysis fields from 2006 to 2012, e.g., we find a positive bias of 0.5 % to 1 % at 40 km, which increases to more than 2 % at 50 km. BAROCLIM can also be used as a priori information in RO profile retrievals. In contrast to other a priori information (i.e., MSIS) we find that the use of BAROCLIM better preserves the mean of raw RO measurements. Global statistics of statistically optimized bending angle and refractivity profiles also confirm that BAROCLIM outperforms MSIS. These results clearly demonstrate the utility of BAROCLIM.

## 1 Introduction

Global data sets of the lower and middle atmosphere (troposphere to upper mesosphere) provide important information to understand atmospheric dynamics of the Earth's climate system. Observational data as well as analysis/reanalysis data and atmospheric models are used, e.g., to study specific atmospheric phenomena such as MJO (Madden Julian Oscillation) (e.g. Zhang, 2005), ENSO (El Niño–Southern

AMTD

7, 8193–8231, 2014

## Generation of BAROCLIM and its use in RO retrievals

B. Scherllin-Pirscher  
et al.

Title Page

Abstract

Introduction

Conclusions

References

Tables

Figures

◀

▶

◀

▶

Back

Close

Full Screen / Esc

Printer-friendly Version

Interactive Discussion



Oscillation) (e.g., Angell, 1981; Scherllin-Pirscher et al., 2012), or the QBO (Quasi Biennial Oscillation) (e.g., Baldwin et al., 2001). Long-term observational records, reanalysis data sets, and atmospheric models can also be used to investigate atmospheric climate change (IPCC, 2013).

Simple empirical atmospheric models are of high utility if a quick but reasonable estimate of the atmospheric state is of main interest. This is of importance, e.g., for simulation studies in the field of atmospheric remote sensing or within the retrieval of atmospheric parameters from remote sensing measurements. For this purpose several research communities use early empirical models like CIRA (Committee on Space Research (COSPAR), International Reference Atmosphere) (Fleming et al., 1990) or Mass Spectrometer and Incoherent Scatter Radar (MSIS) (Hedin, 1991; Picone et al., 2002).

Published in the early sixties, the CIRA model was the earliest comprehensive climatological model of the atmosphere, which contains information up to the thermosphere. This model is based on observational data like radiosondes, rocket data, and satellite observations. Its fourth version CIRA-86 includes thermosphere models as well as tables of monthly-mean zonal-mean temperature, pressure, geopotential height, and zonal wind from the surface to an altitude of 120 km. The most recent CIRA version (CIRA-2012) contains updated versions of empirical models of the Earth's upper atmosphere (above 120 km) (CIRA, 2012).

Recent MSIS model versions (MSIS-90 and NRLMSIS-00) provide information on atmospheric composition, total mass density, and temperature from the ground up to the exosphere also using observations from ground, rockets, and satellites. The MSIS model output depends on time (day of year, universal time, local solar time), location (altitude, latitude, longitude), geomagnetic activity (represented by the magnetic index  $A_p$ ), and solar activity (represented by the 10.7 cm solar radiation flux,  $F_{10.7}$ ).

An overview on principal features of a number of global and regional models of the middle atmosphere and thermosphere is given by AIAA (2004), summarizing their model content, uncertainties, and limitations. Randel et al. (2004) compared

## Generation of BAROCLIM and its use in RO retrievals

B. Scherllin-Pirscher  
et al.

Title Page

Abstract

Introduction

Conclusions

References

Tables

Figures

◀

▶

◀

▶

Back

Close

Full Screen / Esc

Printer-friendly Version

Interactive Discussion



## Generation of BAROCLIM and its use in RO retrievals

B. Scherllin-Pirscher  
et al.

Title Page

Abstract

Introduction

Conclusions

References

Tables

Figures

◀

▶

◀

▶

Back

Close

Full Screen / Esc

Printer-friendly Version

Interactive Discussion



middle-atmosphere climatologies from approximately 10 km to 80 km including historical measurements from rocketsonde winds and temperatures (1970 to 1989), lidar temperature data (1990s), global meteorological analyses, and satellite data and found notable differences between these data sets. Some biases found in atmospheric analyses were caused by the low vertical resolution of these data as well as the low vertical resolution of some assimilated satellite measurements.

Since 2004 research initiatives tried to understand and eliminate errors of previous middle atmosphere models, building new, state-of-the-art analysis and reanalysis products. However, there are still uncertainties and differences in current reanalysis products, and the SPARC (Stratosphere-troposphere Processes And their Role in Climate) Reanalysis/analysis Intercomparison Project (S-RIP, Fujiwara et al., 2012) aims at understanding and reasonably interpreting these differences and contributing to future reanalysis improvements in the middle atmosphere.

In this study, we aim at compiling and investigating a global climatological model from recent high resolution radio occultation (RO) bending angles. The RO method (Melbourne et al., 1994; Kursinski et al., 1997) is an active limb sounding technique, which utilizes radio signals continuously broadcast by Global Positioning System (GPS) satellites. The measured quantity is the phase change of the GPS signal as a function of time, which is a measure for physical atmospheric parameters, in particular bending angle and radio refractivity, from which density, pressure, geopotential height, temperature, and humidity profiles can be derived with very high accuracy (though in the lower moist troposphere auxiliary information is necessary to separate dry air and moist air contributions to the refractivity). Precise and stable oscillators aboard the GPS satellites ensure measurement stability and consistency between various RO missions, without the need for instrument dependent calibrations (Hajj et al., 2004; Schreiner et al., 2007; Foelsche et al., 2011).

First RO profiles of the Earth's atmosphere were provided by the GPS/MET experiment in intermittent periods from 1995 and 1997 (Rocken et al., 1997). Since 2001, RO data have been continuously available from a number of RO satellite missions:

CHAMP RO measurements from 2001 to 2008 are supplemented with measurements from SAC-C (launched in 2000), GRACE (2002), Metop-A (2006), TerraSAR-X (2007), C/NOFS (2008), OceanSat-2 (2009), Tandem-X (2010), SAC-D (2011), Megha-Tropiques (2011), Metop-B (2012), FY-3C (2013), and KOMPSAT-5 (2013) as well as from the first six-satellite RO constellation Formosat-3/COSMIC (F3C; launched in 2006).

Atmospheric profiles from RO are used for data assimilation in numerical weather prediction (NWP) (e.g., Healy and Thépaut, 2006; Cucurull and Derber, 2008), and in atmospheric and climate research (see Anthes, 2011; Steiner et al., 2011, for reviews). Most studies utilize RO profiles in the upper troposphere and lower stratosphere (UTLS) region, i.e., the altitude range from approximately 5 km to 35 km, where RO profiles of pressure, geopotential height, and temperature are known to be of best quality (Scherllin-Pirscher et al., 2011b).

The top altitude of RO measurements depends on the instrument settings, but is at least 80 km (e.g., Metop-A and Metop-B). For F3C it is usually about 120 km or higher. However, at these altitudes, individual RO profiles are dominated by measurement noise and ionospheric disturbances, because neutral atmospheric density gradients are small. To derive refractivity profiles via the Abel integral transform (Fjeldbo et al., 1971), and since noisy and erroneous information from high altitudes propagates downwards in the retrieval process, bending angles are combined with a priori information, e.g., from a climatology, usually applying statistical optimization (Rodgers, 2000; Healy, 2001; Gorbunov, 2002; Gobiet and Kirchengast, 2004; Lohmann, 2005).

Formally, the upper limit in the Abel integral transform is infinity (Fjeldbo et al., 1971). If a climatology is used for statistical optimization, it is therefore necessary that it is able to provide a good measure of the bending angle to very high altitudes. Usually, the climatology is used as an extrapolation above the altitude range where the statistical optimization is performed (or some other form of extrapolation is necessary for high accuracy purposes). However, biases in the a priori information are inevitable. At high enough altitudes biases are non-negligible (in a fractional sense), and affect the quality

## Generation of BAROCLIM and its use in RO retrievals

B. Scherllin-Pirscher  
et al.

[Title Page](#)[Abstract](#)[Introduction](#)[Conclusions](#)[References](#)[Tables](#)[Figures](#)[◀](#)[▶](#)[◀](#)[▶](#)[Back](#)[Close](#)[Full Screen / Esc](#)[Printer-friendly Version](#)[Interactive Discussion](#)

of derived atmospheric profiles (Ho et al., 2012; Steiner et al., 2013). Therefore high quality a priori information is of particular importance.

Ao et al. (2012) and Gleisner and Healy (2013) introduced a new approach to derive GPS RO climatological products. Instead of averaging individual refractivity profiles, they calculated monthly-mean bending angles and computed mean refractivity as the Abel inversion of the mean bending angle. Ao et al. (2012) showed that the maximum altitude through which the F3C measurements are useful increased substantially, which leads to a reduced bias in climatological averages of refractivity. The main drawback of this approach, however, is that it can only be used to obtain mean atmospheric fields and is not applicable to individual RO profiles.

The generation of the bending angle radio occultation climatology (BAROCLIM) described in this paper is mainly based on the work by Foelsche and Scherllin-Pirscher (2012) and Scherllin-Pirscher (2013). Section 2 gives a detailed description of the RO data set as well as of reference data used in this study. In Sect. 3 we present the method used to construct BAROCLIM and in Sect. 4 we discuss potential systematic errors and evaluate the model by comparing it to reference data from NWP analysis fields provided by the European Centre for Medium-Range Weather Forecasts (ECMWF). In Sect. 5 we show that BAROCLIM can further be used as a priori information for statistical optimization in RO profile retrievals. Conclusions are drawn in Sect. 6.

## 2 Data

For the generation of BAROCLIM, we used ionosphere-corrected bending angles as a function of impact altitude (impact parameter with the local radius of curvature and geoid undulation subtracted). These profiles were retrieved with the Wegener Center for Climate and Global Change (WEGC) Occultation Processing System version 5.6 (OPSV5.6) (Schwärz et al., 2013) and interpolated on a regular 200 m grid.

### Generation of BAROCLIM and its use in RO retrievals

B. Scherllin-Pirscher  
et al.

Title Page

Abstract

Introduction

Conclusions

References

Tables

Figures



Back

Close

Full Screen / Esc

Printer-friendly Version

Interactive Discussion











Generic Occultation Performance Simulator (EGOPS) (Fritzer et al., 2012) and the Radio Occultation Processing Package (ROPP) (Culverwell, 2013).

To validate BAROCLIM we used operational ECMWF analysis fields at T42 horizontal resolution (comparable to RO horizontal resolution) and 91 vertical levels. Profiles were extracted at mean RO event location of those F3C measurements, which were used to construct BAROCLIM. We applied a forward model to derive ECMWF bending angles from refractivity.

We will show in Sect. 5 that BAROCLIM can be used as a priori information for the statistical optimization in the processing of RO measurements. To investigate the performance of BAROCLIM as a priori information, we used level 1a data from CHAMP, GRACE-A, SAC-C, and F3C from January 2008 and July 2008 (level 1a data were again provided by UCAR/CDAAC; CHAMP data version was 2009.2650, other satellites had consistent data version 2010.2640) and applied the WEGC OPSv5.6 retrieval using BAROCLIM and MSIS as a priori information for bending angle initialization. Retrieved atmospheric profiles were then compared to operationally retrieved OPSv5.6 profiles, which used ECMWF short-range forecasts as a priori in the statistical optimization (Schwärz et al., 2013).

### 3 BAROCLIM generation

Figure 1 summarizes the steps of the BAROCLIM generation. Using ionosphere-corrected bending angles as a function of impact altitude on a regular 200 m grid, we first applied a quality control (QC) to identify and exclude bad profiles before averaging bending angles in latitude and altitude and calculating monthly-mean 10° zonal-mean bending angles. These long-term monthly means include data from 6 or 7 years. Since we aimed at generating a BAROCLIM spectral model, which (theoretically) reaches from the surface to infinity, we extended mean RO profiles with MSIS. We refer to these bending angles as the BAROCLIM discrete model. The BAROCLIM spectral model

## Generation of BAROCLIM and its use in RO retrievals

B. Scherllin-Pirscher  
et al.

Title Page

Abstract

Introduction

Conclusions

References

Tables

Figures

◀

▶

◀

▶

Back

Close

Full Screen / Esc

Printer-friendly Version

Interactive Discussion



was then constructed by expansion into Chebychev polynomials and zonal harmonics. Below we describe these steps in detail.

### 3.1 Quality control of individual profiles

Bending angles, which are very noisy and/or contain unphysical values, can strongly affect the quality of a bending angle climatology. To avoid entering these profiles in BAROCLIM, we only used OPSv5.6 profiles, which passed the external QC performed at WEGC (Schwärz et al., 2013). This external QC comprises bending angle, refractivity, and temperature profiles, which are compared to co-located profiles from ECMWF analysis fields. The profile is flagged bad if the difference between the RO and the ECMWF profile is larger than 20 % in bending angle, 10 % in refractivity, and/or 25 K in temperature. However, since these quality checks are only performed in the upper troposphere and lower stratosphere region up to 35 km, profiles passing the external QC can still be very noisy in the upper stratosphere and above.

The inspection of individual bending angle profiles indeed revealed that it is imperative to perform an additional QC. We therefore introduced a threefold approach for an additional outlier rejection. In a first step we rejected all profiles with bending angles smaller than  $-40 \mu\text{rad}$  or larger than  $+40 \mu\text{rad}$  in the altitude range from 50 km to 80 km. In this altitude range, neutral atmospheric bending angles are usually smaller than  $20 \mu\text{rad}$  and bending angles smaller/larger than  $\pm 40 \mu\text{rad}$  result from very strong (unphysical) noise, possibly sometimes related to ionospheric scintillations (Zeng and Sokolovskiy, 2010).

To also detect very bad profiles below 50 km, we rejected all profiles with bending angles smaller than  $-20 \mu\text{rad}$  below 50 km in a second step. Profiles, which were flagged bad by these QC mechanisms were outlier profiles, which could damage the quality of BAROCLIM.

Inspecting remaining bending angle profiles after application of step 1 and 2 we still found non-negligible data noise at high altitudes and therefore applied a third QC. We used all remaining profiles and calculated mean bending angles and standard

## Generation of BAROCLIM and its use in RO retrievals

B. Scherllin-Pirscher  
et al.

Title Page

Abstract

Introduction

Conclusions

References

Tables

Figures

◀

▶

◀

▶

Back

Close

Full Screen / Esc

Printer-friendly Version

Interactive Discussion



deviations for 10° latitude bands for long-term monthly means, and rejected all profiles with bending angles outside of four standard deviations ( $4\sigma$ ) from the mean in the altitude range from the surface to 100 km. Figure 2 shows F3C profiles for the month of January before and after application of this  $4\sigma$ -criterion. This figure reveals that application of this final QC results in a considerable decrease in standard deviation.

Table 1 gives an overview on the number of profiles provided by UCAR/CDAAC, retrieved at WEGC, and passing BAROCLIM QC. The number of bending angle profiles for a given month used to generate BAROCLIM is always larger than 200 000, except for June, when it is slightly below. In some months, however, the number is even larger than 260 000. These numbers are large enough and sufficient to obtain a smooth BAROCLIM up to about 60 km.

### 3.2 Average over high quality profiles

The optimal horizontal extent of the regions to calculate a typical climatological mean from high quality measurements is a trade-off between a sufficiently large number of profiles and atmospheric variability. Our experience of building atmospheric climatologies utilizing RO data (e.g., Foelsche et al., 2008; Scherllin-Pirscher et al., 2011a) showed that 10° zonal bands were a reasonable choice for calculating mean atmospheric profiles from RO data. These bands range from 90° S to 90° N resulting in 18 zonal bands.

The mean number of profiles per 10° latitudinal band varied between 11 000 (June) and 15 000 (October). However, the latitudinal distribution of RO events is not uniform, which is due to the orbit characteristics of the GPS and F3C satellites (orbit inclinations of 55° and 72°, respectively). The largest number of RO measurements per latitude band is obtained at mid-latitudes, where more than 20 000 profiles enter BAROCLIM. A smaller number of measurements per latitude band is obtained at low (approximately 8000 profiles) and high latitudes (between 2000 and 4000 profiles). We judged that 8000 tropical profiles are sufficient to calculate mean profiles because atmospheric variability at high altitudes is small at low latitudes. We also considered

## Generation of BAROCLIM and its use in RO retrievals

B. Scherllin-Pirscher  
et al.

Title Page

Abstract

Introduction

Conclusions

References

Tables

Figures



Back

Close

Full Screen / Esc

Printer-friendly Version

Interactive Discussion



2000 high-latitude profiles to be sufficient due to the decrease of zonal surface area with increasing latitude. Thus, 2000 profiles are enough to represent a small area.

Long-term monthly-mean bending angles for 10° zonal bands for January and July are shown in Fig. 3 together with their standard error of the mean  $\sigma_{\text{mean}} = \sigma / \sqrt{N}$  ( $\sigma$  is the standard deviation and  $N$  is here the number of observations used to estimate the mean – not to be confused with refractivity). Bending angles are negative (white areas) somewhat above an altitude of 80 km, and the standard error of the mean is larger than 10 % above 70 km in the winter hemisphere at high latitudes. While negative mean bending angles might be caused by residual systematic ionospheric errors (see Danzer et al., 2013), the high standard error of the mean (in a fractional sense) is a result of the decreasing bending angle with altitude. Below 60 km to 70 km, however, mean bending angles are rather smooth and the standard error of the mean generally does not exceed 2 %.

### 3.3 BAROCLIM discrete model

Because of the generally decreasing bending angle with altitude the mean bending angle (Fig. 3) is error dominated above 80 km. Therefore we combined the mean bending angles with a priori information to generate a model that is useful also above the mesosphere. A priori information profiles can be obtained from already existing climatological models or profile data sets. Current state-of-the-art analysis, reanalysis, or forecast products from NWP centers do not reach high enough in the atmosphere (the ECMWF model top, e.g., is at 0.01 hPa corresponding approximately to 80 km) and can therefore not be used for extension to higher altitudes.

Since already readily available, we decided to use the modified MSIS climatology as a priori information. In order to make maximum use of the information content of the RO data, and since the MSIS-90 climatology might be biased at high altitudes, we did not necessarily take the MSIS profile as representative for a given latitude band and month. Instead we performed a search in the spectral model of the MSIS bending angle climatology on a regular 5° × 10° latitude-longitude grid through all months from

## Generation of BAROCLIM and its use in RO retrievals

B. Scherllin-Pirscher  
et al.

Title Page

Abstract

Introduction

Conclusions

References

Tables

Figures

◀

▶

◀

▶

Back

Close

Full Screen / Esc

Printer-friendly Version

Interactive Discussion





## Generation of BAROCLIM and its use in RO retrievals

B. Scherllin-Pirscher  
et al.

Title Page

Abstract

Introduction

Conclusions

References

Tables

Figures

◀

▶

◀

▶

Back

Close

Full Screen / Esc

Printer-friendly Version

Interactive Discussion



individual profiles (even if profiles are tracked all the way to the surface) depends on the bending angle. For the ray grazing the surface in one occultation event with a large bending angle, the impact altitude is larger than for the ray grazing the surface in another occultation event with smaller bending angle. It thus becomes dubious to talk about bending angle at the lowest impact altitude for the mean profile.

Being aware that MSIS is a dry air climatology (no humidity is included in this model) and accepting that BAROCLIM will not reflect real atmosphere conditions at the lowest altitudes, we decided to use this model for extending BAROCLIM down to the surface. BAROCLIM is therefore, like MSIS, a dry air model, being clearly wrong in regions where moisture is usually abundant, but for technical reasons smooth bending angles in the lower troposphere close to the surface are necessary when generating the BAROCLIM spectral model.

To extend mean RO bending angles down to the surface, we first extracted the MSIS profile for the given month and latitude and searched for the best fit in longitude. We then applied a cosine transition with the mean RO bending angle. Since the amount of water vapor in the lower troposphere depends on latitude, we performed RO-MSIS transition between 5 km and 10 km from 60° S/N to 90° S/N, between 7 km and 12 km from 30° S/N to 60° S/N, and between 10 km and 15 km from 30° S to 30° N.

To sum up, our BAROCLIM discrete model is available for every month (January to December), has a horizontal resolution of 10°-zonal bands, and a vertical gridding of 200 m. It relies 100 % on RO data from the upper troposphere up to 60 km. Above 80 km and below 5, 7, or 10 km (depending on latitude), it consists of data-driven adjusted MSIS profiles.

### 3.4 BAROCLIM spectral model

For fast and easy access to BAROCLIM at any latitude and impact altitude, and to make the functionality similar to the MSIS bending angle and refractivity spectral models in EGOPS and ROPP, we expanded the BAROCLIM discrete model in Chebychev polynomials and zonal harmonics. Since the bending angle scale height is more finely

structured than the smooth, almost exponentially decreasing bending angle, we expanded a function into Chebychev polynomials, which depends on the bending angle scale height.

First we introduced the variable  $z = h - h_{\text{surf}}$  ( $z \geq 0$ ), where  $h$  is impact altitude and  $h_{\text{surf}}$  is the lowest possible impact altitude corresponding to a hypothetical ray grazing the surface. The lowest impact altitude was estimated from the MSIS climatology using  $h_{\text{surf}} = N_{\text{surf}}^{\text{MSIS}} 10^{-6} R_E$ , where  $R_E = 6371$  km is the mean radius of the Earth and  $N_{\text{surf}}^{\text{MSIS}}$  is MSIS refractivity at the surface extracted at the specific month and latitude and at longitude  $\lambda = 0^\circ$ . The bending angle  $\alpha(z)$  was then extracted from the BAROCLIM discrete model by interpolation to a number of discrete impact heights evaluating  $z(x) = 100(\ln 2 - \ln(1-x))$  at  $k_{\text{max}}$  values of  $x$  given by  $x_k = \cos(\pi(k - \frac{1}{2})/k_{\text{max}})$  ( $k = 1, \dots, k_{\text{max}}$ ). This mapping yields a finer vertical spacing at low altitudes and coarser vertical spacing at higher altitudes. Having  $\alpha(z)$  at these discrete impact heights, the bending angle scale height  $H_S(z)$  was calculated as

$$H_S(z) = \frac{z}{\ln(\alpha_{\text{surf}}/\alpha(z))}, \quad (1)$$

where  $\alpha_{\text{surf}}$  is the bending angle at  $z = 0$  (also extracted from the BAROCLIM discrete model).

Chebychev coefficients,  $c_j$ , were obtained from

$$c_j = \frac{2}{k_{\text{max}}} \sum_{k=1}^{k_{\text{max}}} G(x_k) \cos\left(\frac{\pi(j-1)(k-\frac{1}{2})}{k_{\text{max}}}\right), \quad (2)$$

where

$$G(x) = H_S(z(x)) - (mz(x) + b), \quad (3)$$

and  $m$  and  $b$  are slope and intercept of a straight line fit to the scale height at high altitudes. Finally,  $j = 1, \dots, k_{\text{max}}$  and  $k_{\text{max}}$  is the number of extracted Chebychev coefficients for  $k_{\text{max}} - 1$  Chebychev polynomials (Press et al., 1986).

## Generation of BAROCLIM and its use in RO retrievals

B. Scherllin-Pirscher  
et al.

Title Page

Abstract

Introduction

Conclusions

References

Tables

Figures

◀

▶

◀

▶

Back

Close

Full Screen / Esc

Printer-friendly Version

Interactive Discussion





The Chebychev coefficients were then expanded into zonal harmonics. Besides the Chebychev coefficients, also  $h_{\text{surf}}$ ,  $\alpha_{\text{surf}}$ ,  $m$ , and  $b$  were expanded into zonal harmonics.

In general, zonal harmonics coefficients  $A_n$  are obtained from a given function  $f(y)$ , where normally  $y = \cos \theta$  ( $\theta$  is co-latitude (polar distance)) as (see e.g., Spiegel, 1979)

$$A_n = \frac{2n+1}{2} \int_{-1}^{+1} f(y) P_n(y) dy, \quad (4)$$

where  $P_n$  are Legendre Polynomials,  $n = 1, \dots, n_{\text{max}}$ , and  $n_{\text{max}}$  is the number of extracted zonal harmonics coefficients. In our case  $f(y)$  was either  $c_j$ ,  $h_{\text{surf}}$ ,  $\alpha_{\text{surf}}$ ,  $m$ , or  $b$ . Thus, the final output of the BAROCLIM spectral model was  $n_{\text{max}}$  zonal harmonics coefficients of  $k_{\text{max}}$  Chebychev coefficients, surface impact altitude, surface bending angle, and slope and intercept of the straight line.

To reconstruct the bending angle from the BAROCLIM spectral model for a given impact altitude and latitude, we first applied Clenshaw's recurrence formula (Press et al., 1986) for zonal harmonics to obtain the Chebychev coefficients  $c_j$  as well as  $h_{\text{surf}}$ ,  $\alpha_{\text{surf}}$ ,  $m$ , and  $b$ . We also applied Clenshaw's recurrence formula to reconstruct  $G(x)$  (where  $x = 1 - 2 \exp(-z/100)$ ) before reconstructing bending angles using

$$\alpha(z) = \alpha_{\text{surf}} \exp\left(-\frac{z}{H_S(z)}\right). \quad (5)$$

More details on the expansion of BAROCLIM into Chebychev polynomials and zonal harmonics as well as their reconstruction can be found in Scherllin-Pirscher (2013).

To settle on the order of the Chebychev polynomials and the degree of the zonal harmonics, we calculated differences between the bending angles from the BAROCLIM discrete model and the BAROCLIM spectral model for different choices of  $k_{\text{max}}$  and  $n_{\text{max}}$  aiming at minimizing these differences. Since the BAROCLIM discrete model has a horizontal resolution of  $10^\circ$ -zonal bands (18 zonal bands), we found minimum differences for 18 zonal harmonics coefficients. Concerning the order of the Chebychev

## Generation of BAROCLIM and its use in RO retrievals

B. Scherllin-Pirscher  
et al.

Title Page

Abstract

Introduction

Conclusions

References

Tables

Figures

◀

▶

◀

▶

Back

Close

Full Screen / Esc

Printer-friendly Version

Interactive Discussion



polynomials we found reasonable good agreement between the BAROCLIM discrete model and the BAROCLIM spectral model for 64 Chebychev coefficients. When using 128 Chebychev coefficients the spectral model even reproduces the sharp tropical tropopause. For this reason we decided to use 128 Chebychev coefficients when reconstructing the bending angle, but lower vertical resolution bending angles can be reconstructed using a smaller number of Chebychev coefficients. This could be useful for applications where computational speed is more important than high vertical resolution.

Figure 4 shows (as an example for the month of January) the BAROCLIM spectral model for 128 Chebychev coefficients and 18 zonal harmonics coefficients. The left right panel of Fig. 4 shows that differences between the BAROCLIM discrete model and the BAROCLIM spectral model are, in general, within 0.5 % up to 60 km (a closer inspection of the differences reveals that it is even within 0.3 % in most places). Larger differences are found close to the 60 km altitude level (transition height of RO-only data and statistically optimized RO data) and above 80 km where the absolute amount of the bending angle is so small that even very small differences yield a noticeable percentage value.

## 4 Evaluation of BAROCLIM

### 4.1 Error sources

Atmospheric climatological fields of RO data are affected by (i) random statistical errors, (ii) systematic errors, and (iii) sampling errors (Scherllin-Pirscher et al., 2011a). Random statistical errors include, e.g., receiver thermal noise, clock stability/differencing errors, ionospheric noise, and statistical velocity errors (see e.g., Ramsauer and Kirchengast, 2001). Random statistical errors diminish by averaging over a large number of profiles. Since BAROCLIM is based on a very large number of quality

## Generation of BAROCLIM and its use in RO retrievals

B. Scherllin-Pirscher  
et al.

Title Page

Abstract

Introduction

Conclusions

References

Tables

Figures

◀

▶

◀

▶

Back

Close

Full Screen / Esc

Printer-friendly Version

Interactive Discussion



controlled RO soundings, all contributions from statistical errors are negligible, except at the highest altitudes (cf. Fig. 3).

Systematic errors are more important for BAROCLIM. From the RO measurement and retrieval perspective, these errors include systematic errors in orbit determination, local multipath, residual ionospheric errors, and errors due to assumptions in the RO retrieval. Systematic errors of BAROCLIM also include contributions due to the additional use of MSIS at high and low altitudes.

Schreiner et al. (2009) investigated the uncertainty of UCAR/CDAAC precise orbit determination (POD) of F3C satellites and found a velocity error of  $0.17 \text{ mm s}^{-1}$ , which approximately corresponds to an F3C bending angle error of  $0.05 \mu\text{rad}$  (1 % at 60 km). Due to the lack of an alternative measurement system onboard of F3C, Schreiner et al. (2009) could not give an estimate of the orbit accuracy. If we assume that half of the F3C velocity error is attributable to a systematic error component, the corresponding BAROCLIM error will be 0.5 % at 60 km.

Errors due to local multipath depend on the spacecraft size and on the reflection coefficient (Rocken et al., 2008). For F3C these local multipath errors are estimated to be smaller than  $0.05 \text{ mm s}^{-1}$  (Rocken et al., 2008), which corresponds to  $0.015 \mu\text{rad}$  in bending angle when using velocity error to bending angle error conversion given by Schreiner et al. (2009). This error corresponds to 0.3 % at 60 km.

Systematic residual ionospheric errors are important for BAROCLIM. In general, ionospheric residual errors depend on the level of ionization at high altitudes, which again depends on local time (i.e., day- versus nighttime conditions due to solar insolation) as well as on solar activity (Kursinski et al., 1997; Schreiner et al., 2011; Danzer et al., 2013). Danzer et al. (2013) showed that this error rarely exceeds  $0.1 \mu\text{rad}$  from mid 2006 to end of 2011. When averaging over this time period, it is even smaller than  $0.05 \mu\text{rad}$ . Giving a conservative estimate and assuming a  $0.1 \mu\text{rad}$  residual ionospheric error from mid 2006 to 2012 (solar activity increased in 2012), which corresponds to 2 % at 60 km, this error is the most important systematic error source of BAROCLIM.

## Generation of BAROCLIM and its use in RO retrievals

B. Scherllin-Pirscher  
et al.

Title Page

Abstract

Introduction

Conclusions

References

Tables

Figures

◀

▶

◀

▶

Back

Close

Full Screen / Esc

Printer-friendly Version

Interactive Discussion



Systematic errors due to assumptions in the retrieval process (such as spherical symmetry) are assumed to be small at high altitudes (Rocken et al., 2008).

Another BAROCLIM systematic error component results from the additional use of the MSIS model at low (tropospheric) and high (mesospheric and above) altitudes.

Large systematic BAROCLIM errors in the troposphere are due to the absence of atmospheric water vapor in the MSIS model. For this reason BAROCLIM is not generally useful for tropospheric studies. Systematic errors from MSIS a priori information used at high altitudes (below 70 km) are assumed to be small due to the way MSIS was used (finding a bending angle profile that fits the mean RO data at high altitudes).

Finally, errors in BAROCLIM are caused by discrete sampling times and locations of RO measurements (sampling error, see e.g., Foelsche et al., 2008; Scherllin-Pirscher et al., 2011a). The sampling error depends on the number of profiles and atmospheric variability and can be estimated from reference data that reflect true spatial and temporal variability. Using 6 to 7 years of RO data for BAROCLIM with more than 200 000 profiles per month (exception: June with 198 177 profiles), the BAROCLIM sampling error is negligible.

## 4.2 Comparison to ECMWF

In December 2006 ECMWF started assimilating RO data in its operational assimilation system (Healy, 2007), which implies that ECMWF analyses and RO measurement data are not independent anymore. Healy et al. (2005) and Healy and Thépaut (2006) showed that assimilation of RO data significantly improved the forecast skill of the ECMWF operational system in the upper troposphere and lower stratosphere. Foelsche et al. (2009) found reduced biases in mean ECMWF analysis fields at least up to 30 km after ECMWF started assimilating RO. However, even though the assimilation is performed up to 50 km (von Engeln et al., 2009), a large RO observational error assumed in the assimilation at high altitudes limits the impact of RO data in this region. Systematic differences between the BAROCLIM spectral model and mean ECMWF

## Generation of BAROCLIM and its use in RO retrievals

B. Scherllin-Pirscher  
et al.

Title Page

Abstract

Introduction

Conclusions

References

Tables

Figures

◀

▶

◀

▶

Back

Close

Full Screen / Esc

Printer-friendly Version

Interactive Discussion



analysis profiles therefore do not only provide valuable information about the quality of BAROCLIM but also on the quality of ECMWF analyses, especially at high altitudes.

Figure 5 shows that the differences are small ( $< 0.5\%$ ) in the upper troposphere and lower stratosphere region between approximately 10 km and 35 km. Besides this good agreement, striking features, which are very similar in all months are (i) large negative differences in the troposphere, (ii) a band of positive differences (mostly  $< 1\%$ ) above approximately 35 km, and (iii) large positive differences ( $> 2\%$ ) above 50 km.

Large negative tropospheric differences are caused by BAROCLIM being a dry air model. Neglecting atmospheric humidity yields unrealistically small bending angles in regions where humidity is high. Positive BAROCLIM minus ECMWF analysis differences above 35 km ( $< 1\%$ ) and above 50 km ( $> 2\%$ ) are most likely attributable to biases in ECMWF analyses rather than to BAROCLIM. This hypothesis is supported by comparisons of MIPAS (Michelson Interferometer for Passive Atmospheric Sounding onboard the European environmental satellite ENVISAT) and MLS (Microwave Limb Sounder onboard the US Aura satellite) measurements, which consistently show negative MIPAS/MLS minus ECMWF temperature differences above approximately 2 hPa (Chauhan et al., 2009). A negative temperature bias corresponds to a positive refractivity bias, which in turn corresponds to a positive bending angle bias (see e.g., Scherllin-Pirscher et al., 2011b) as shown in Fig. 5.

This comparison clearly shows that BAROCLIM is of very high quality at least up to 60 km and has the potential to validate middle-atmosphere data.

## 5 Use of BAROCLIM in RO profile retrievals

The intended aim of BAROCLIM was its use as a priori information in RO profile retrievals. We therefore evaluated its performance by processing occultation data from different RO missions and comparing retrieved atmospheric profiles obtained with different a priori information.

### Generation of BAROCLIM and its use in RO retrievals

B. Scherllin-Pirscher  
et al.

Title Page

Abstract

Introduction

Conclusions

References

Tables

Figures

◀

▶

◀

▶

Back

Close

Full Screen / Esc

Printer-friendly Version

Interactive Discussion



As mentioned in Sect. 2, we used level 1a RO data provided by UCAR/CDAAC for all missions and applied the WEGC OPSv5.6 retrieval to obtain ionosphere-corrected bending angles. As bending angle a priori information for statistical optimization we used BAROCLIM and MSIS profiles co-located to RO events (termed “BAROCLIM-Col” and “MSIS-Col”, respectively) and BAROCLIM and MSIS profiles, which best fit the ionosphere-corrected bending angle (termed “BAROCLIM-SF” and “MSIS-SF”, respectively, where SF means “searched” and “fit”). This best-fit algorithm was similar to the “enhanced IGAM high-altitude retrieval scheme” described by Gobiet and Kirchengast (2004), searching for the best-fitting MSIS/BAROCLIM profile between 35 km and 55 km and performing linear regression to find a multiplication factor to refine the fit to the data from 45 km to 65 km. For comparison, we also included operationally retrieved OPSv5.6 profiles (Schwärz et al., 2013), which use ECMWF short-range forecasts as a priori information (termed “OPSv5.6”).

To assess the performance of BAROCLIM in RO profile retrievals we calculated monthly statistics of raw ionosphere-corrected bending angles minus optimized bending angles. Since the purpose of statistical optimization is to reduce random errors, while preserving the mean, the mean difference between raw and optimized bending angles is an indicator of the quality of the background climatology.

Figure 6 shows mean results for January and July 2008 for CHAMP, GRACE-A, SAC-C, and F3C. Since noise of individual ionosphere-corrected raw bending angle profiles is high in the middle and upper stratosphere, difference profiles have a very large standard deviation. We did not include this information in the plot but note that it reaches approximately 15 % between 45 km (CHAMP) and 50 km (F3C).

Figure 6 shows that while bending angle systematic differences of BAROCLIM-SF, BAROCLIM-Col, and OPSv5.6 are very close to zero for all satellites and both months, MSIS-Col and MSIS-SF data are slightly negatively biased above 40 km and 50 km, respectively. Largest differences (> 5 % above 55 km) can be found for MSIS-Col. Zero differences below 30 km impact altitude are due to the WEGC OPS retrieval, which performs statistical optimization only above this height.

## Generation of BAROCLIM and its use in RO retrievals

B. Scherllin-Pirscher  
et al.

[Title Page](#)
[Abstract](#)
[Introduction](#)
[Conclusions](#)
[References](#)
[Tables](#)
[Figures](#)
[◀](#)
[▶](#)
[◀](#)
[▶](#)
[Back](#)
[Close](#)
[Full Screen / Esc](#)
[Printer-friendly Version](#)
[Interactive Discussion](#)


## Generation of BAROCLIM and its use in RO retrievals

B. Scherllin-Pirscher  
et al.

Title Page

Abstract

Introduction

Conclusions

References

Tables

Figures

◀

▶

◀

▶

Back

Close

Full Screen / Esc

Printer-friendly Version

Interactive Discussion



Figure 7 shows how differences propagate from statistically optimized bending angle to refractivity using either MSIS-SF, BAROCLIM-SF, or OPSv5.6. Since bending angle and refractivity differences shown in Fig. 7 are calculated against ECMWF analyses, zero difference does not necessarily mean that it is close to the truth (cf. Fig. 5 and the discussion there about). Bending angle and refractivity systematic differences are very similar for all satellites with differences amongst the satellites being, in general, smaller than 1.5 % up to 60 km. Comparison of the three methods reveals distinctively larger differences in bending angle and refractivity. While BAROCLIM-SF profiles are close to operationally retrieved OPSv5.6 profiles in the entire altitude range, MSIS-SF clearly performs worse compared to the other methods. Difference between MSIS-SF and ECMWF profiles reaches 3 % at approximately 55 km in bending angle and refractivity.

Contrary to systematic differences, the magnitude of the standard deviation features distinct satellite dependent characteristics. Since CHAMP data noise is larger compared to the other satellites, OPS uses more weight of the a priori information, which results in smoother profiles and smaller standard deviation above 40 km. When comparing standard deviations of the three methods, larger standard deviations are found for the two search and fit algorithms than for OPSv5.6.

## 6 Summary, conclusions, and outlook

In this study, we used radio occultation (RO) data from the Formosat-3/COSMIC (F3C) mission from August 2006 to December 2012 (more than 6 years of data) to compile a bending angle radio occultation climatology (BAROCLIM). After careful quality control we calculated “long-term” monthly means for 10°-zonal bands from the surface up to 100 km. Since mean RO profiles become more noisy above 60 km (in a fractional sense) and are error dominated above 80 km, we used a priori information from the Mass Spectrometer and Incoherent Scatter Radar (MSIS) climatology and applied statistical optimization from 60 km to 80 km to extend BAROCLIM into the thermosphere. We also used the MSIS model to obtain smooth bending angles in the troposphere



and performed a cosine transition to mean RO profiles in the middle troposphere. This implies that BAROCLIM is a dry air model in the troposphere. However, BAROCLIM relies on RO data from the upper troposphere up to 60 km and also contains RO-derived information higher up.

We showed that BAROCLIM is of very high quality in the stratosphere and lower mesosphere, where systematic biases are small. In this altitude range differences between BAROCLIM and ECMWF (European Centre for Medium-Range Weather Forecasts) analyses (forward modeled to bending angle) rather show deficiencies in ECMWF analyses than in BAROCLIM. At 40 km, e.g., we find BAROCLIM minus ECMWF analysis bending angle differences of about 0.5 % to 1.0 % and sometimes more. Above 50 km, this difference even exceeds 2 %. This is generally consistent with findings by Chauhan et al. (2009), using other types of satellite measurements.

A main application of BAROCLIM is its use as a priori information in RO profile retrievals. We evaluated BAROCLIM by comparing retrieved RO profiles initialized with different a priori information provided by BAROCLIM, MSIS, and ECMWF. These comparisons showed that RO bending angles initialized with BAROCLIM are close to raw (un-optimized) bending angles. This means that BAROCLIM-initialized bending angles preserve the mean of the raw measurements, while MSIS-initialized bending angles are slightly negatively biased. Comparison of retrieved RO profiles to ECMWF analyses also indicated that BAROCLIM outperforms MSIS. These results confirmed the capability of BAROCLIM to be used in RO profile retrievals.

The main advantage of BAROCLIM compared to the average bending angle approach proposed by Ao et al. (2012) and Gleisner and Healy (2013) is that utilization of BAROCLIM yields individual RO profiles rather than climatological fields and individual RO profiles are known to provide accurate information of, e.g., tropopause characteristics (e.g., Schmidt et al., 2005; Rieckh et al., 2014), occurrence of multiple tropopauses (e.g., Schmidt et al., 2006), or the height of the atmospheric boundary layer (e.g., von Engel et al., 2005).

## Generation of BAROCLIM and its use in RO retrievals

B. Scherllin-Pirscher  
et al.

Title Page

Abstract

Introduction

Conclusions

References

Tables

Figures

◀

▶

◀

▶

Back

Close

Full Screen / Esc

Printer-friendly Version

Interactive Discussion



## Generation of BAROCLIM and its use in RO retrievals

B. Scherllin-Pirscher  
et al.

Title Page

Abstract

Introduction

Conclusions

References

Tables

Figures

◀

▶

◀

▶

Back

Close

Full Screen / Esc

Printer-friendly Version

Interactive Discussion



Our current BAROCLIM spectral model does not include profiles of particular atmosphere conditions arising, e.g., during and after sudden stratospheric warmings (SSW). Since several major and minor SSW events occurred since 2006 it is possible to include such profiles in BAROCLIM. Another BAROCLIM update could comprise its inversion to refractivity, density, pressure, and temperature so that these parameters could be used for other applications as well.

*Acknowledgements.* We want to thank Gottfried Kirchengast (WEGC) for valuable scientific discussions. We are also grateful to UCAR/CDAAC for the provision of level 1a RO data and WEGC for the provision of level 1b RO data. Special thanks to M. Schwärz and J. Fritzer (WEGC) for the contributions in OPS system development and operations. Furthermore, we thank ECMWF (Reading, UK) for providing analysis data. B. Scherllin-Pirscher and U. Foelsche were partly funded by GRAS SAF (visiting scientist project VS14) and ROM SAF (visiting scientist project VS19), and by the Austrian Science Fund (FWF) under grants P22293-N21 (BENCHCLIM) and T620-N29 (DYNOC). S. Syndergaard and K. B. Lauritsen have been supported by the ROM SAF (Radio Occultation Meteorology Satellite Application Facility) which is an operational RO processing center under EUMETSAT.

## References

- AIAA: Guide to Reference and Standard Atmosphere Models, ANSI/AIAA G-003B-2004, American Institute of Aeronautics and Astronautics, 2004. 8195
- Angell, J. K.: Comparison of variations in atmospheric quantities with sea surface temperature variations in the equatorial eastern Pacific, Mon. Weather Rev., 109, 230–243, 1981. 8195
- Anthes, R. A.: Exploring Earth's atmosphere with radio occultation: contributions to weather, climate and space weather, Atmos. Meas. Tech., 4, 1077–1103, doi:10.5194/amt-4-1077-2011, 2011. 8197
- Anthes, R. A., Bernhardt, P. A., Chen, Y., Cucurull, L., Dymond, K. F., Ector, D., Healy, S. B., Ho, S.-P., Hunt, D. C., Kuo, Y.-H., Liu, H., Manning, K., McCormick, C., Meehan, T. K., Randel, W. J., Rocken, C., Schreiner, W. S., Sokolovskiy, S. V., Syndergaard, S., Thompson, D. C., Trenberth, K. E., Wee, T.-K., Yen, N. L., and Zeng, Z.: The COSMIC/FORMOSAT-

3 mission: early results, B. Am. Meteorol. Soc., 89, 313–333, doi:10.1175/BAMS-89-3-313, 2008. 8205

Ao, C. O., Mannucci, A. J., and Kursinski, E. R.: Improving GPS radio occultation stratospheric refractivity retrievals for climate benchmarking, Geophys. Res. Lett., 39, L12701, doi:10.1029/2012GL051720, 2012. 8198, 8215

Baldwin, M. P., Gray, L. J., Dunkerton, T. J., Hamilton, K., Haynes, P. H., Randel, W. J., Holton, J. R., Alexander, M. J., Hirota, I., Horinouchi, T., Jones, D. B. A., Kinnnersley, J. S., Marquardt, C., Sato, K., and Takahashi, M.: The quasi-biennial oscillation, Rev. Geophys., 39, 179–229, 2001. 8195

Chauhan, S., Höpfner, M., Stiller, G. P., von Clarmann, T., Funke, B., Glatthor, N., Grabowski, U., Linden, A., Kellmann, S., Milz, M., Steck, T., Fischer, H., Froidevaux, L., Lambert, A., Santee, M. L., Schwartz, M., Read, W. G., and Livesey, N. J.: MIPAS reduced spectral resolution UTLS-1 mode measurements of temperature, O<sub>3</sub>, HNO<sub>3</sub>, N<sub>2</sub>O, H<sub>2</sub>O and relative humidity over ice: retrievals and comparison to MLS, Atmos. Meas. Tech., 2, 337–353, doi:10.5194/amt-2-337-2009, 2009. 8212, 8215

CIRA: COSPAR International Reference Atmosphere–2012, CIRA-2012, Models of the Earth's Upper Atmosphere, Technical report, chapters 1 to 3, CIRA, available at: [http://spaceweather.usu.edu/files/uploads/PDF/COSPAR\\_INTERNATIONAL\\_REFERENCE\\_ATMOSPHERE-CHAPTER-1\\_3%28rev-01-11-08-2012%29.pdf](http://spaceweather.usu.edu/files/uploads/PDF/COSPAR_INTERNATIONAL_REFERENCE_ATMOSPHERE-CHAPTER-1_3%28rev-01-11-08-2012%29.pdf) (last access: July 2014), 2012. 8195

Cucurull, L. and Derber, J. C.: Operational implementation of COSMIC observations into NCEP's global data assimilation system, Weather Forecast., 23, 702–711, doi:10.1175/2008WAF2007070.1, 2008. 8197

Culverwell, I.: The Radio Occultation Processing Package (ROPP) – An Overview, Version 7.0 (ROPP-7 v7.0), ROM SAF CDOP-2, ROM SAF, Ref: SAF/ROM/METO/UG/ROPP/001, July 2013, available at: <http://www.romsaf.org> (last access: July 2014), 2013. 8201

Danzer, J., Scherllin-Pirscher, B., and Foelsche, U.: Systematic residual ionospheric errors in radio occultation data and a potential way to minimize them, Atmos. Meas. Tech., 6, 2169–2179, doi:10.5194/amt-6-2169-2013, 2013. 8204, 8210

Fjeldbo, G., Kliore, A. J., and Eshleman, V. R.: The neutral atmosphere of Venus as studied with the Mariner V radio occultation experiments, Astron. J., 76, 123–140, doi:10.1086/111096, 1971. 8197

## AMTD

7, 8193–8231, 2014

### Generation of BAROCLIM and its use in RO retrievals

B. Scherllin-Pirscher  
et al.

Title Page

Abstract

Introduction

Conclusions

References

Tables

Figures

◀

▶

◀

▶

Back

Close

Full Screen / Esc

Printer-friendly Version

Interactive Discussion



## Generation of BAROCLIM and its use in RO retrievals

B. Scherllin-Pirscher  
et al.

Title Page

Abstract

Introduction

Conclusions

References

Tables

Figures

◀

▶

◀

▶

Back

Close

Full Screen / Esc

Printer-friendly Version

Interactive Discussion



Fleming, E. L., Chandra, S., Barnett, J. J., and Corney, M.: Zonal mean temperature, pressure, zonal wind, and geopotential height as functions of latitude, COSPAR International Reference Atmosphere: 1986, Part II: Middle Atmosphere Models, Adv. Space Res., 10, 11–59, 1990. 8195

5 Foelsche, U. and Scherllin-Pirscher, B.: Development of bending angle climatology from RO data, CDOP visiting scientist report 14, GRAS SAF, Ref: SAF/GRAS/DMI/REP/VS14/001, July 2012, available at: <http://www.romsaf.org> (last access: July 2014), 2012. 8198

Foelsche, U., Borsche, M., Steiner, A. K., Gobiet, A., Pirscher, B., Kirchengast, G., Wickert, J., and Schmidt, T.: Observing upper troposphere-lower stratosphere climate with radio occultation data from the CHAMP satellite, Clim. Dynam., 31, 49–65, doi:10.1007/s00382-007-0337-7, 2008. 8203, 8211

10 Foelsche, U., Pirscher, B., Borsche, M., Steiner, A. K., Kirchengast, G., and Rocken, C.: Climatologies based on radio occultation data from CHAMP and Formosat-3/COSMIC, in: New Horizons in Occultation Research: Studies in Atmosphere and Climate, edited by: Steiner, A. K., Pirscher, B., Foelsche, U., and Kirchengast, G., Springer, 181–194, doi:10.1007/978-3-642-00321-9\_15, 2009. 8211

15 Foelsche, U., Scherllin-Pirscher, B., Ladstädter, F., Steiner, A. K., and Kirchengast, G.: Refractivity and temperature climate records from multiple radio occultation satellites consistent within 0.05 %, Atmos. Meas. Tech., 4, 2007–2018, doi:10.5194/amt-4-2007-2011, 2011. 8196, 8199

Fritzer, J., Kirchengast, G., and Pock, M.: EGOPS 5.6/DDD, End-to-End Generic Occultation Performance Simulation and Processing System Version 5.6 (EGOPS 5.6)/Detailed Design Document, WEGC-IGAM/UniGraz technical report for ESA/ESTEC no. 2/2012, doc-id: WEGC-EGOPS-2012-TR-02, issue 1.1, WEGC and IGAM, 2012. 8201

25 Fujiwara, M., Polavarapu, S., and Jackson, D.: A proposal of the SPARC reanalysis/analysis intercomparison project, SPARC Newsletter, 38, 14–17, 2012. 8196

Gleisner, H. and Healy, S. B.: A simplified approach for generating GNSS radio occultation refractivity climatologies, Atmos. Meas. Tech., 6, 121–129, doi:10.5194/amt-6-121-2013, 2013. 8198, 8215

30 Gobiet, A. and Kirchengast, G.: Advancements of Global Navigation Satellite System radio occultation retrieval in the upper stratosphere for optimal climate monitoring utility, J. Geophys. Res., 109, D24110, doi:10.1029/2004JD005117, 2004. 8197, 8205, 8213

## Generation of BAROCLIM and its use in RO retrievals

B. Scherllin-Pirscher  
et al.

Title Page

Abstract

Introduction

Conclusions

References

Tables

Figures

◀

▶

◀

▶

Back

Close

Full Screen / Esc

Printer-friendly Version

Interactive Discussion



Gobiet, A., Kirchengast, G., Manney, G. L., Borsche, M., Retscher, C., and Stiller, G.: Retrieval of temperature profiles from CHAMP for climate monitoring: intercomparison with Envisat MIPAS and GOMOS and different atmospheric analyses, *Atmos. Chem. Phys.*, 7, 3519–3536, doi:10.5194/acp-7-3519-2007, 2007. 8205

5 Gorbunov, M. E.: Canonical transform method for processing radio occultation data in the lower troposphere, *Radio Sci.*, 37, 1076, doi:10.1029/2000RS002592, 2002. 8197, 8199

Gorbunov, M. E. and Lauritsen, K. B.: Analysis of wave fields by Fourier integral operators and their application for radio occultations, *Radio Sci.*, 39, RS4010, doi:10.1029/2003RS002971, 2004. 8199

10 Gorbunov, M. E., Benzon, H.-H., Jensen, A. S., Lohmann, M. S., and Nielsen, A. S.: Comparative analysis of radio occultation processing approaches based on Fourier integral operators, *Radio Sci.*, 39, RS6004, doi:10.1029/2003RS002916, 2004. 8199

Hajj, G. A., Ao, C. O., Iijima, B. A., Kuang, D., Kursinski, E. R., Mannucci, A. J., Meehan, T. K., Romans, L. J., de la Torre Juarez, M., and Yunk, T. P.: CHAMP and SAC-  
15 C atmospheric occultation results and intercomparisons, *J. Geophys. Res.*, 109, D06109, doi:10.1029/2003JD003909, 2004. 8196

Healy, S.: Operational assimilation of GPS radio occultation measurements at ECMWF, *ECMWF Newsletter*, 111, 6–11, 2007. 8211

Healy, S. B.: Radio occultation bending angle and impact parameter errors caused by horizontal refractive index gradients in the troposphere: a simulation study, *J. Geophys. Res.*, 106,  
20 11875–11889, doi:10.1029/2001JD900050, 2001. 8197

Healy, S. B. and Thépaut, J. N.: Assimilation experiments with CHAMP GPS radio occultation measurements, *Q. J. Roy. Meteor. Soc.*, 132, 605–623, doi:10.1256/qj.04.182, 2006. 8197, 8211

25 Healy, S. B., Jupp, A. M., and Marquardt, C.: Forecast impact experiment with GPS radio occultation measurements, *Geophys. Res. Lett.*, 32, L03804, doi:10.1029/2004GL020806, 2005. 8211

Hedin, A. E.: Extension of the MSIS thermosphere model into the middle and lower atmosphere, *J. Geophys. Res.*, 96, A2, doi:10.1029/90JA02125, 1991. 8195, 8200

30 Ho, S.-P., Hunt, D., Steiner, A. K., Mannucci, A. J., Kirchengast, G., Gleisner, H., Heise, S., von Engeln, A., Marquardt, C., Sokolovskiy, S., Schreiner, W., Scherllin-Pirscher, B., Ao, C., Wickert, J., Syndergaard, S., Lauritsen, K., Leroy, S., Kursinski, E. R., Kuo, Y.-H., Foelsche, U., Schmidt, T., and Gorbunov, M.: Reproducibility of GPS radio occultation data for climate

## Generation of BAROCLIM and its use in RO retrievals

B. Scherllin-Pirscher  
et al.

Title Page

Abstract

Introduction

Conclusions

References

Tables

Figures

◀

▶

◀

▶

Back

Close

Full Screen / Esc

Printer-friendly Version

Interactive Discussion



monitoring: Profile-to-profile inter-comparison of CHAMP climate records 2002 to 2008 from six data centers, *J. Geophys. Res.*, 117, D18111, doi:10.1029/2012JD017665, 2012. 8198, 8199

Hocke, K., Igarashi, K., and Tsuda, T.: High-resolution profiling of layered structures in the lower stratosphere by GPS occultation, *Geophys. Res. Lett.*, 30, 1426, doi:10.1029/2002GL016566, 2003. 8199

Høeg, P., Hauchecorne, A., Kirchengast, G., Syndergaard, S., Belloul, B., Leitinger, R., and Rothleitner, W.: Derivation of atmospheric properties using a radio occultation technique, *DMI Sci. Rep.* 95-4, Danish Meteorological Institute, Copenhagen, Denmark, 1995. 8200

IPCC: Climate Change 2013: The Physical Science Basis. Contribution of Working Group I to the Fifth Assessment Report of the Intergovernmental Panel on Climate Change, Cambridge University Press, Cambridge, United Kingdom and New York, NY, USA, 2013. 8195

Kursinski, E. R., Hajj, G. A., Schofield, J. T., Linfield, R. P., and Hardy, K. R.: Observing Earth's atmosphere with radio occultation measurements using the Global Positioning System, *J. Geophys. Res.*, 102, 23429–23465, doi:10.1029/97JD015669, 1997. 8196, 8210

Lohmann, M.: Application of dynamical error estimation for statistical optimization of radio occultation bending angles, *Radio Sci.*, 40, RS3011, doi:10.1029/2004RS003117, 2005. 8197

Melbourne, W. G., Davis, E. S., Duncan, C. B., Hajj, G. A., Hardy, K. R., Kursinski, E. R., Meehan, T. K., Young, L. E., and Yunck, T. P.: The application of spaceborne GPS to atmospheric limb sounding and global change monitoring, *JPL Publication*, 94–18, 147 pp., 1994. 8196, 8199

Picone, J. M., Hedin, A. E., Drob, D. P., and Aikin, A. C.: NRLMSISE-00 empirical model of the atmosphere: statistical comparisons and scientific issues, *J. Geophys. Res.*, 107, A12, doi:10.1029/2002JA009430, 2002. 8195

Press, W. H., Flannery, B. P., Teukolsky, S. A., and Vetterling, W. T.: Numerical Recipes: The Art of Scientific Computing, Cambridge University Press, New York, NY, USA, 1986. 8207, 8208

Ramsauer, J. and Kirchengast, G.: Sensitivity of atmospheric profiles retrieved from GNSS radio occultation data to instrumental errors, *Igam/ug technical report for esa/estec no. 6/2001*, Institute for Geophysics, Astrophysics, and Meteorology, University of Graz, 2001. 8209

Randel, W., Udelhofen, P., Fleming, E., Geller, M., Gelman, M., Hamilton, K., Karoly, D., Ortland, D., Pawson, S., Swinbank, R., Wu, F., Baldwin, M., Chanin, M.-L., Keckhut, P., Labitzke, K., Remsberg, E., Simmons, A., and Wu, D.: The SPARC intercom-

## Generation of BAROCLIM and its use in RO retrievals

B. Scherllin-Pirscher  
et al.

Title Page

Abstract

Introduction

Conclusions

References

Tables

Figures

◀

▶

◀

▶

Back

Close

Full Screen / Esc

Printer-friendly Version

Interactive Discussion



parison of middle-atmosphere climatologies, J. Climate, 17, 986–1003, doi:10.1175/1520-0442(2004)017<0986:TSIOMC>2.0.CO;2, 2004. 8195

Rieckh, T., Scherllin-Pirscher, B., Ladstädter, F., and Foelsche, U.: Characteristics of tropopause parameters as observed with GPS radio occultation, Atmos. Meas. Tech. Discuss., 7, 4693–4727, doi:10.5194/amtd-7-4693-2014, 2014. 8215

Rocken, C., Anthes, R., Exner, M., Hunt, D., Sokolovskiy, S., Ware, R., Gorbunov, M., Schreiner, W., Feng, D., Herman, B., Kuo, Y.-H., , and Zuo, X.: Analysis and validation of GPS/MET data in the neutral atmosphere, J. Geophys. Res., 102, 29849–29866, doi:10.1029/97JD02400, 1997. 8196

Rocken, C., Sokolovskiy, S., Schreiner, W., Hunt, D., Ho, S.-P., Kuo, Y.-H., and Foelsche, U.: Climate monitoring with radio occultation data: systematic error sources, presentation at the GPS RO climate applications workshop, 2008. 8210, 8211

Rodgers, C. D.: Inverse methods for atmospheric sounding: theory and practice, in: Series on Atmospheric Oceanic and Planetary Physics, vol. 2, World Scientific Publishing Company, Singapore, 2000. 8197

Scherllin-Pirscher, B.: Further development of BAROCLIM and implementation in ROPP, ROM SAF CDOP-2 visiting scientist report 19, ROM SAF, Ref: SAF/ROM/DMI/REP/VS19/001, June 2013, available at: <http://www.romsaf.org> (last access: July 2014), 2013. 8198, 8208

Scherllin-Pirscher, B., Kirchengast, G., Steiner, A. K., Kuo, Y.-H., and Foelsche, U.: Quantifying uncertainty in climatological fields from GPS radio occultation: an empirical-analytical error model, Atmos. Meas. Tech., 4, 2019–2034, doi:10.5194/amt-4-2019-2011, 2011a. 8203, 8209, 8211

Scherllin-Pirscher, B., Steiner, A. K., Kirchengast, G., Kuo, Y.-H., and Foelsche, U.: Empirical analysis and modeling of errors of atmospheric profiles from GPS radio occultation, Atmos. Meas. Tech., 4, 1875–1890, doi:10.5194/amt-4-1875-2011, 2011b. 8197, 8212

Scherllin-Pirscher, B., Deser, C., Ho, S.-P., Chou, C., Randel, W., and Kuo, Y.-H.: The vertical and spatial structure of ENSO in the upper troposphere and lower stratosphere from GPS radio occultation measurements, Geophys. Res. Lett., 39, L20801, doi:10.1029/2012GL053071, 2012. 8195

Schmidt, T., Heise, S., Wickert, J., Beyerle, G., and Reigber, C.: GPS radio occultation with CHAMP and SAC-C: global monitoring of thermal tropopause parameters, Atmos. Chem. Phys., 5, 1473–1488, doi:10.5194/acp-5-1473-2005, 2005. 8215



## Generation of BAROCLIM and its use in RO retrievals

B. Scherllin-Pirscher  
et al.

Title Page

Abstract

Introduction

Conclusions

References

Tables

Figures

◀

▶

◀

▶

Back

Close

Full Screen / Esc

Printer-friendly Version

Interactive Discussion



Schmidt, T., Beyerle, G., Heise, S., Wickert, J., and Rothacher, M.: A climatology of multiple tropopauses derived from GPS radio occultations with CHAMP and SAC-C, *Geophys. Res. Lett.*, 33, L04808, doi:10.1029/2005GL024600, 2006. 8215

Schreiner, W., Rocken, C., Sokolovskiy, S., Syndergaard, S., and Hunt, D.: Estimates of the precision of GPS radio occultations from the COSMIC/FORMOSAT-3 mission, *Geophys. Res. Lett.*, 34, L04808, doi:10.1029/2006GL027557, 2007. 8196

Schreiner, W., Kuo, Y.-H., Ho, S.-P., Sokolovskiy, S., and Hunt, D.: Use of GNSS Radio Occultation data for Climate Applications, world Climate Research Program Conference, 24–28 October 2011, Denver, Colorado USA, available at: <http://www.cosmic.ucar.edu/groupAct/references/WCRP-2011-Schreiner-Final.pdf> (last access: July 2014), 2011. 8210

Schreiner, W. S., Rocken, C., Sokolovskiy, S., and Hunt, D.: Quality assessment of COSMIC/FORMOSAT-3 GPS radio occultation data derived from single- and double-difference atmospheric excess phase processing, *GPS Solut.*, 14, 13–22, doi:10.1007/s10291-009-0132-5, 2009. 8199, 8210

Schwärz, M., Scherllin-Pirscher, B., Kirchengast, G., Schwarz, J., Ladstädter, F., Fritzer, J., and Ramsauer, J.: Multi-Mission Validation by Satellite Radio Occultation, Final report for ESA/ESRIN No. 01/2013, WEGC, 2013. 8198, 8201, 8202, 8213

Sokolovskiy, S., Rocken, C., Hunt, D., Schreiner, W., Johnson, J., Masters, D., and Esterhuizen, S.: GPS profiling of the lower troposphere from space: inversion and demodulation of the open-loop radio occultation signals, *Geophys. Res. Lett.*, 33, L14816, doi:10.1029/2006GL026112, 2006. 8199

Spiegel, M. R. (Ed.): *Handbuch für Mathematik: Formeln und Tabellen, Theorie und Anwendung*, Schaum's Outline, McGraw-Hill, Düsseldorf, New York, St. Louis, 1979. 8208

Steiner, A. K., Lackner, B. C., Ladstädter, F., Scherllin-Pirscher, B., Foelsche, U., and Kirchengast, G.: GPS radio occultation for climate monitoring and change detection, *Radio Sci.*, 46, RS0D24, doi:10.1029/2010RS004614, 2011. 8197

Steiner, A. K., Hunt, D., Ho, S.-P., Kirchengast, G., Mannucci, A. J., Scherllin-Pirscher, B., Gleisner, H., von Engel, A., Schmidt, T., Ao, C., Leroy, S. S., Kursinski, E. R., Foelsche, U., Gorbunov, M., Heise, S., Kuo, Y.-H., Lauritsen, K. B., Marquardt, C., Rocken, C., Schreiner, W., Sokolovskiy, S., Syndergaard, S., and Wickert, J.: Quantification of structural uncertainty in climate data records from GPS radio occultation, *Atmos. Chem. Phys.*, 13, 1469–1484, doi:10.5194/acp-13-1469-2013, 2013. 8198, 8199

- Syndergaard, S.: Retrieval Analysis and Methodologies in Atmospheric Limb Sounding Using the GNSS Radio Occultation Technique, Danish Meteorological Institute, Copenhagen, Denmark, 1999. 8199
- Syndergaard, S.: Modeling the impact of the Earth's oblateness on the retrieval of temperature and pressure profiles from limb sounding, *J. Atmos. Sol.-Terr. Phys.*, 60, 171–180, doi:10.1016/S1364-6826(97)00056-4, 1998. 8199
- von Engel, A., Teixeira, J., Wickert, J., and Buehler, S. A.: Using CHAMP radio occultation data to determine the top altitude of the Planetary Boundary Layer, *Geophys. Res. Lett.*, 32, L06815, doi:10.1029/2004GL022168, 2005. 8215
- von Engel, A., Healy, S., Marquardt, C., Andres, Y., and Sancho, F.: Validation of operational GRAS radio occultation data, *Geophys. Res. Lett.*, 36, L17809, doi:10.1029/2009GL039968, 2009. 8211
- Vorob'ev, V. V. and Krasil'nikova, T. G.: Estimation of the accuracy of the atmospheric refractive index recovery from Doppler shift measurements at frequencies used in the NAVSTAR system, *Izv. Atmos. Ocean. Phys.*, 29, 602–609, 1994. 8199
- Zeng, Z. and Sokolovskiy, S.: Effect of sporadic E clouds on GPS radio occultation signals, *Geophys. Res. Lett.*, 37, L18817, doi:10.1029/2010GL044561, 2010. 8202
- Zhang, C.: Madden–Julian Oscillation, *Rev. Geophys.*, 43, RG2003, doi:10.1029/2004RG000158, 2005. 8194

## Generation of BAROCLIM and its use in RO retrievals

B. Scherllin-Pirscher  
et al.

Title Page

Abstract

Introduction

Conclusions

References

Tables

Figures

◀

▶

◀

▶

Back

Close

Full Screen / Esc

Printer-friendly Version

Interactive Discussion



## Generation of BAROCLIM and its use in RO retrievals

B. Scherllin-Pirscher  
et al.

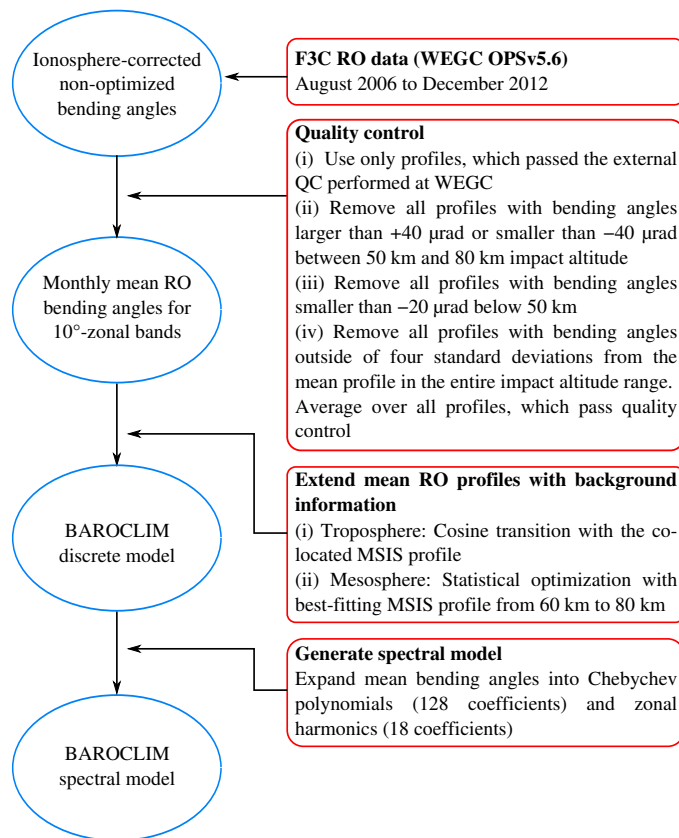
**Table 1.** Number of level 1a F3C data provided by UCAR/CDAAC (first column), number of bending angles profiles retrieved at WEGC (second column), and number of profiles, which passed BAROCLIM quality control (last column). Numbers are shown for every month, adding up the data from August 2006 to December 2012.

	Level 1a	retrieved OPS	after QC
Jan	415 105	307 422	227 815
Feb	396 271	300 670	229 848
Mar	406 435	314 581	230 580
Apr	425 836	336 706	262 513
May	396 528	296 595	222 382
Jun	378 260	273 553	198 177
Jul	422 674	327 990	238 146
Aug	453 726	357 431	268 882
Sep	429 306	335 284	264 264
Oct	435 833	345 237	270 381
Nov	411 974	314 380	240 132
Dec	485 333	360 227	263 235

[Title Page](#)
[Abstract](#)
[Introduction](#)
[Conclusions](#)
[References](#)
[Tables](#)
[Figures](#)
[◀](#)
[▶](#)
[◀](#)
[▶](#)
[Back](#)
[Close](#)
[Full Screen / Esc](#)
[Printer-friendly Version](#)
[Interactive Discussion](#)


## Generation of BAROCLIM and its use in RO retrievals

B. Scherllin-Pirscher  
et al.



**Figure 1.** Flowchart of the BAROCLIM generation.

Title Page

Abstract

Introduction

Conclusions

References

Tables

Figures

◀

▶

◀

▶

Back

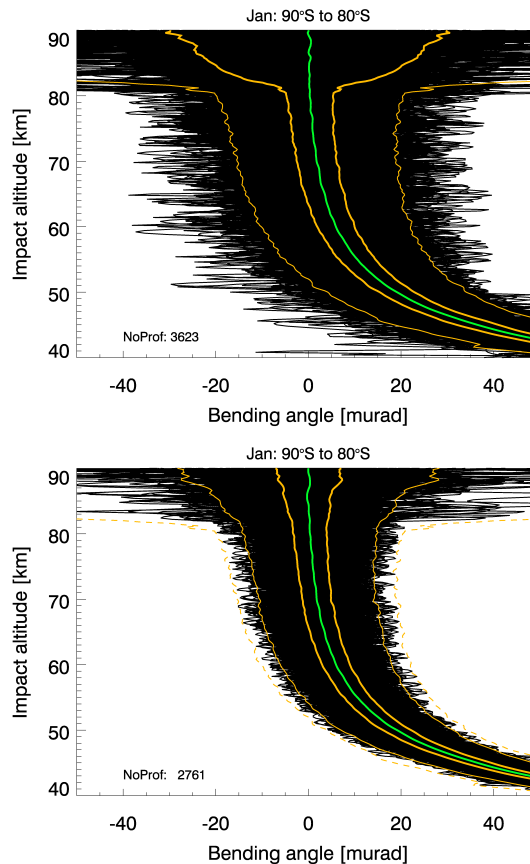
Close

Full Screen / Esc

Printer-friendly Version

Interactive Discussion





**Figure 2.** F3C bending angles (in  $\mu\text{rad}$ ) in January in the latitude band from  $80^\circ\text{S}$  to  $90^\circ\text{S}$  before (top) and after (bottom) the application of the  $4\sigma$ -outlier rejection criterion. The thick green line shows the mean of all profiles, the thick yellow lines one standard deviation, and the thin yellow lines 4 standard deviations. The dashed lines in the lower panel indicates the thin yellow lines in the upper panel.

## Generation of BAROCLIM and its use in RO retrievals

B. Scherllin-Pirscher  
et al.

Title Page

Abstract

Introduction

Conclusions

References

Tables

Figures

◀

▶

◀

▶

Back

Close

Full Screen / Esc

Printer-friendly Version

Interactive Discussion

# Generation of BAROCLIM and its use in RO retrievals

B. Scherllin-Pirscher  
et al.

Title Page

Abstract

Introduction

Conclusions

References

Tables

Figures

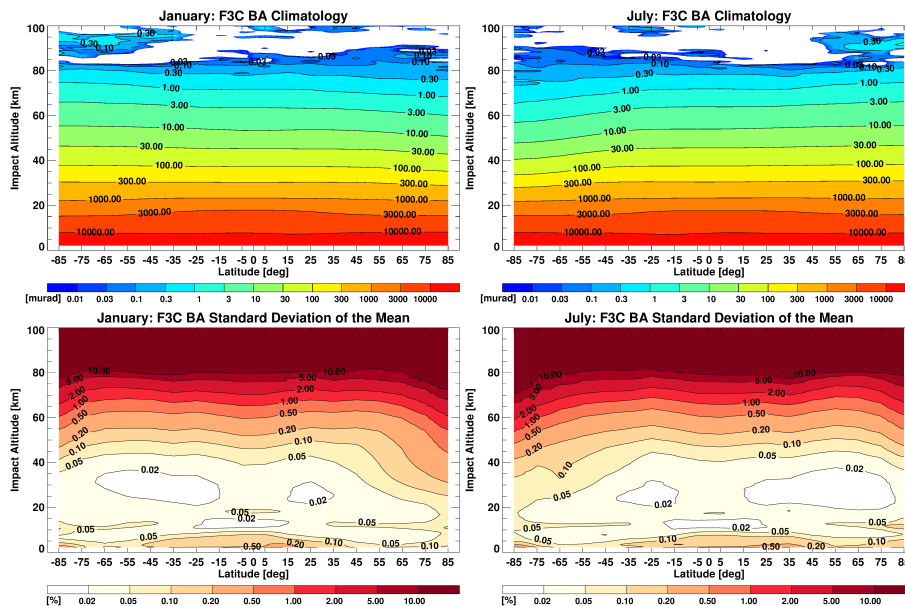
Back

Close

Full Screen / Esc

Printer-friendly Version

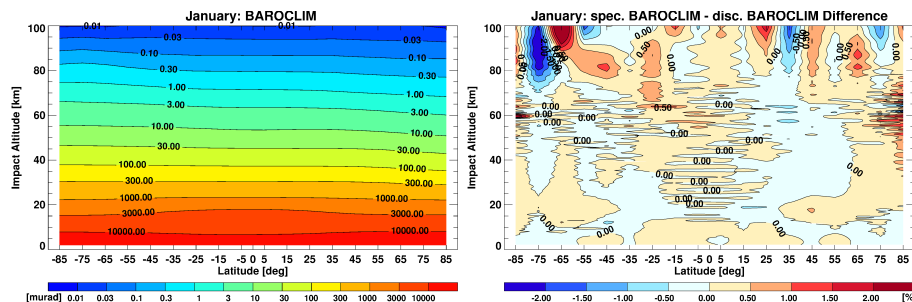
Interactive Discussion



**Figure 3.** Mean F3C bending angles (in  $\mu\text{rad}$ ) (top) and their standard deviation (in percent) of the mean (bottom) in January (left) and July (right) as a function of latitude and impact altitude up to 100 km.

## Generation of BAROCLIM and its use in RO retrievals

B. Scherllin-Pirscher  
et al.



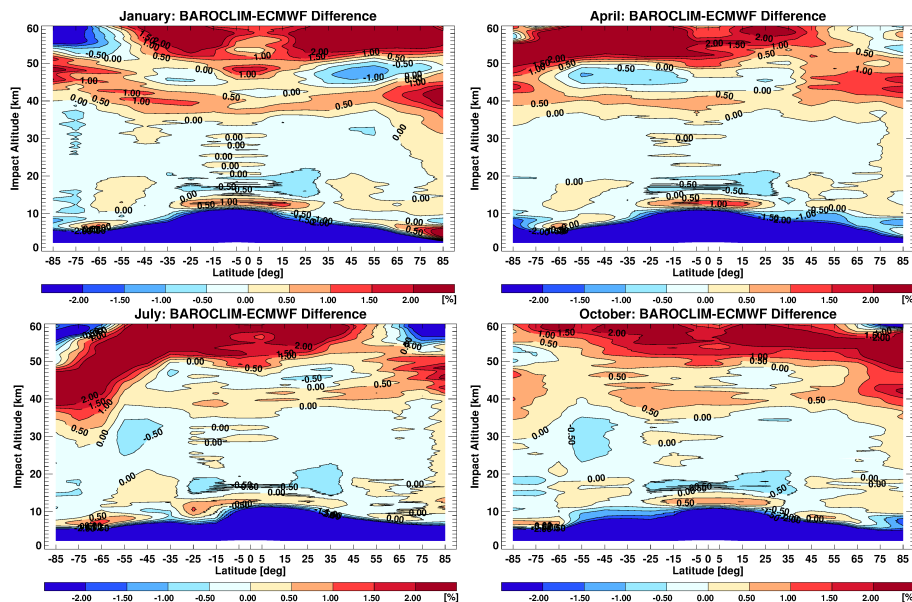
**Figure 4.** BAROCLIM spectral model (calculated with 128 Chebychev coefficients and 18 zonal harmonics coefficients) as a function of latitude and impact altitude for January (left) and difference between the BAROCLIM spectral model and the BAROCLIM discrete model (right).

[Title Page](#)[Abstract](#)[Introduction](#)[Conclusions](#)[References](#)[Tables](#)[Figures](#)[◀](#)[▶](#)[◀](#)[▶](#)[Back](#)[Close](#)[Full Screen / Esc](#)[Printer-friendly Version](#)[Interactive Discussion](#)



# Generation of BAROCLIM and its use in RO retrievals

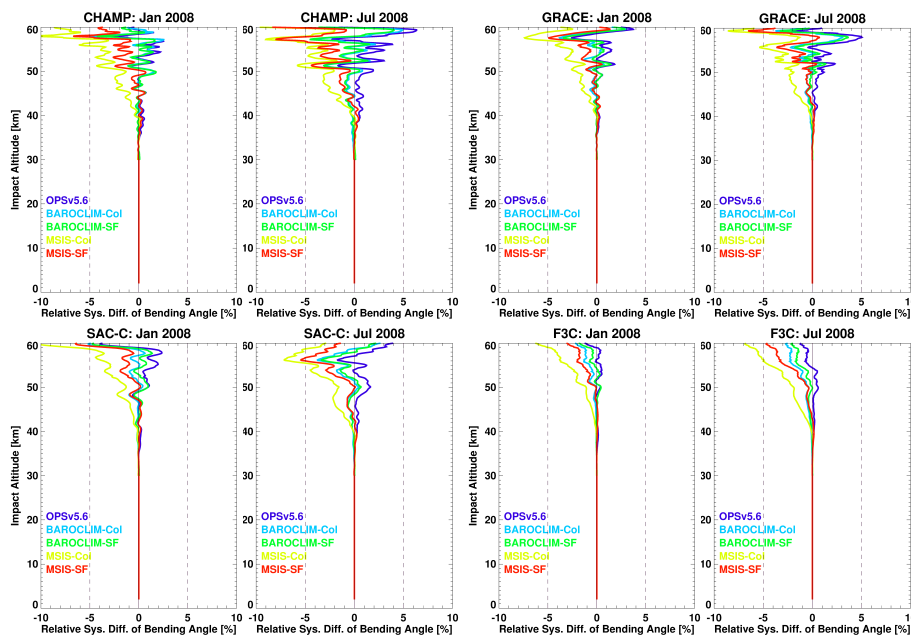
B. Scherllin-Pirscher  
et al.

[Title Page](#)[Abstract](#)[Introduction](#)[Conclusions](#)[References](#)[Tables](#)[Figures](#)[Back](#)[Close](#)[Full Screen / Esc](#)[Printer-friendly Version](#)[Interactive Discussion](#)

**Figure 5.** Systematic difference between the BAROCLIM spectral model and ECMWF analyses forward modeled to bending angle as a function of latitude and impact altitude up to 60 km for January (top left), April (top right), July (bottom left) and October (bottom right).

# Generation of BAROCLIM and its use in RO retrievals

B. Scherllin-Pirscher  
et al.

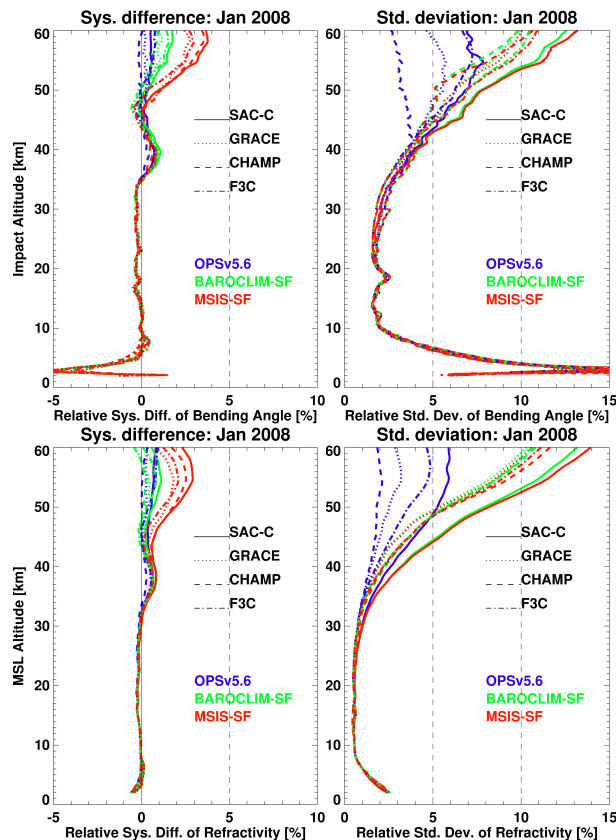


**Figure 6.** Global statistics of systematic difference between raw and statistically optimized RO bending angles for CHAMP, GRACE-A, SAC-C, and F3C for January 2008 and July 2008. Different colors indicate different a priori information used in the retrieval.

[Title Page](#)
[Abstract](#)
[Introduction](#)
[Conclusions](#)
[References](#)
[Tables](#)
[Figures](#)
[◀](#)
[▶](#)
[◀](#)
[▶](#)
[Back](#)
[Close](#)
[Full Screen / Esc](#)
[Printer-friendly Version](#)
[Interactive Discussion](#)


# Generation of BAROCLIM and its use in RO retrievals

B. Scherllin-Pirscher  
et al.



**Figure 7.** Global statistics of systematic difference (left) and standard deviation (right) between RO retrievals and ECMWF analyses for January 2008. The top panels show (statistically optimized) bending angle, and bottom panels refractivity. Different line types indicate retrievals for SAC-C, GRACE-A, CHAMP, and F3C. Different colors different indicate a priori information used in the retrieval.

[Title Page](#)
[Abstract](#)
[Introduction](#)
[Conclusions](#)
[References](#)
[Tables](#)
[Figures](#)
[◀](#)
[▶](#)
[◀](#)
[▶](#)
[Back](#)
[Close](#)
[Full Screen / Esc](#)
[Printer-friendly Version](#)
[Interactive Discussion](#)
