

Interactive
Comment

Interactive comment on “Comparing the cloud vertical structure derived from several methods based on measured atmospheric profiles and active surface measurements” by M. Costa-Surós et al.

M. Costa-Surós et al.

montse.costa@udg.edu

Received and published: 4 June 2014

We want to mention that in the final version of the paper, in response to a comment of an earlier referee (who sent the comments before the manuscript was accepted for AMTD), we will change one case study (Case 4, Figure 6), because we prefer to show a multilayer case in the paper. Thus, instead of showing the case of 20/01/09, where there were only high clouds, we will present the case of 05/10/09 (RS launch time 23.28 h UTC, GOES infrared image at 00.15 h UTC of the next day), which shows a low cloud

Full Screen / Esc

Printer-friendly Version

Interactive Discussion

Discussion Paper



layer and a high cloud layer (see the new figure below). Based on the scrutiny of the GOES image, this multilayer case was included in the final dataset. For this case, the result of ZHA10 method (and also of ZHA10i, ZHA10iLR, and ZHA10LRnew) was classified as “perfect agreement”. Some comments on the new figure will substitute accordingly the comments on the figure that will be removed.

Montse Costa-Surós (on behalf of other authors)

Interactive comment on Atmos. Meas. Tech. Discuss., 7, 3681, 2014.

Full Screen / Esc

Printer-friendly Version

Interactive Discussion

Discussion Paper



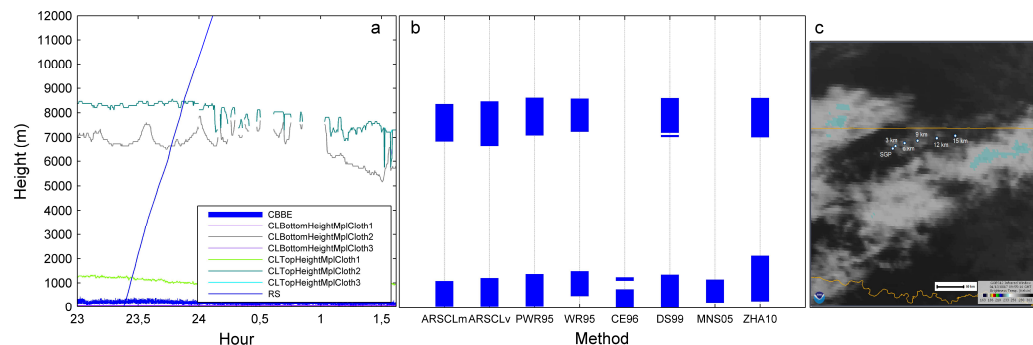


Fig. 1.