

Airmass analysis for AOD (440 nm) and PM₁₀ data

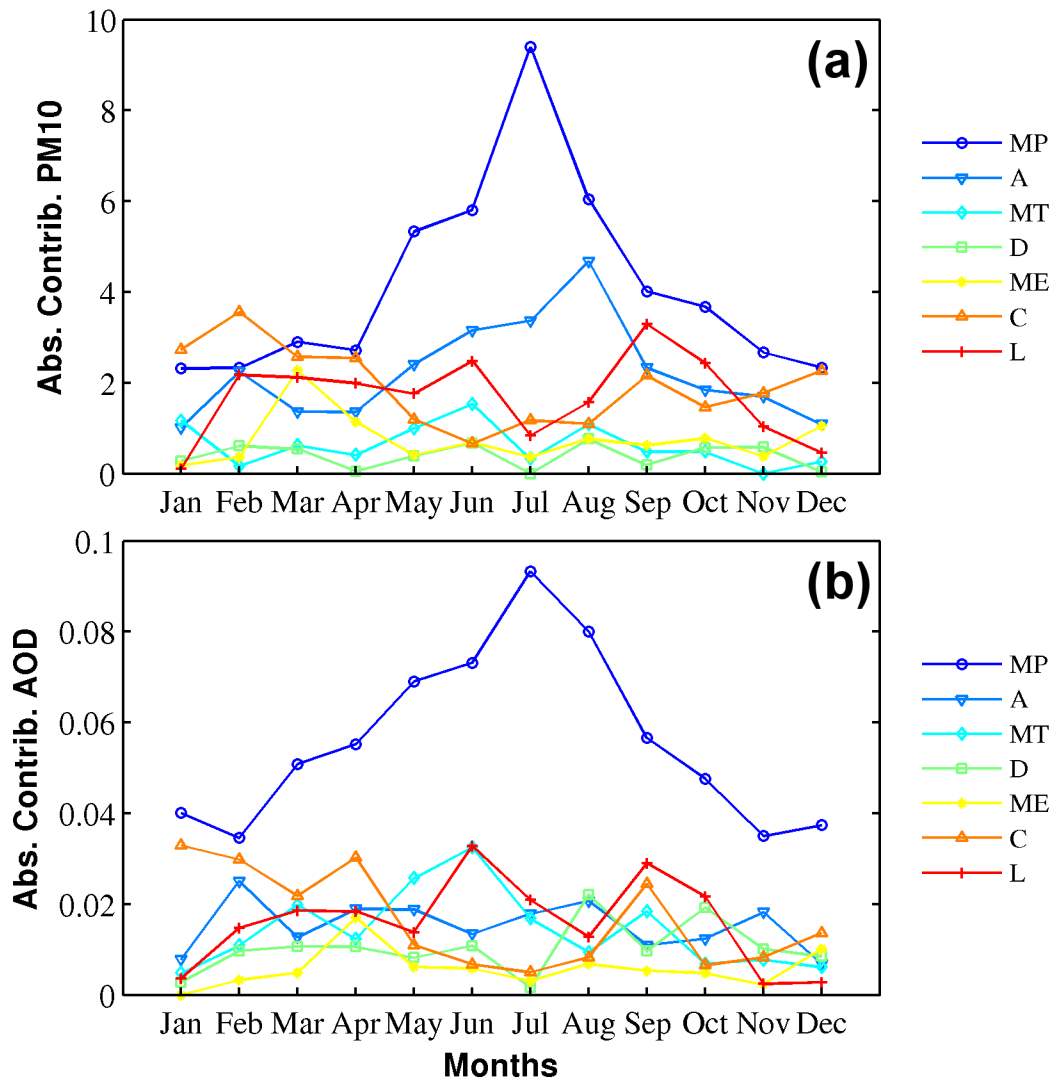


Fig. 1: Climatological annual cycle for the absolute contribution of the different types of airmasses to (a) the AOD and (b) PM₁₀. The 7 types of airmasses used are: Local (L), Continental (C), Mediterranean (ME), Tropical Continental (CT), Tropical Maritime (MT), Polar Maritime (MP) and Arctic (A)

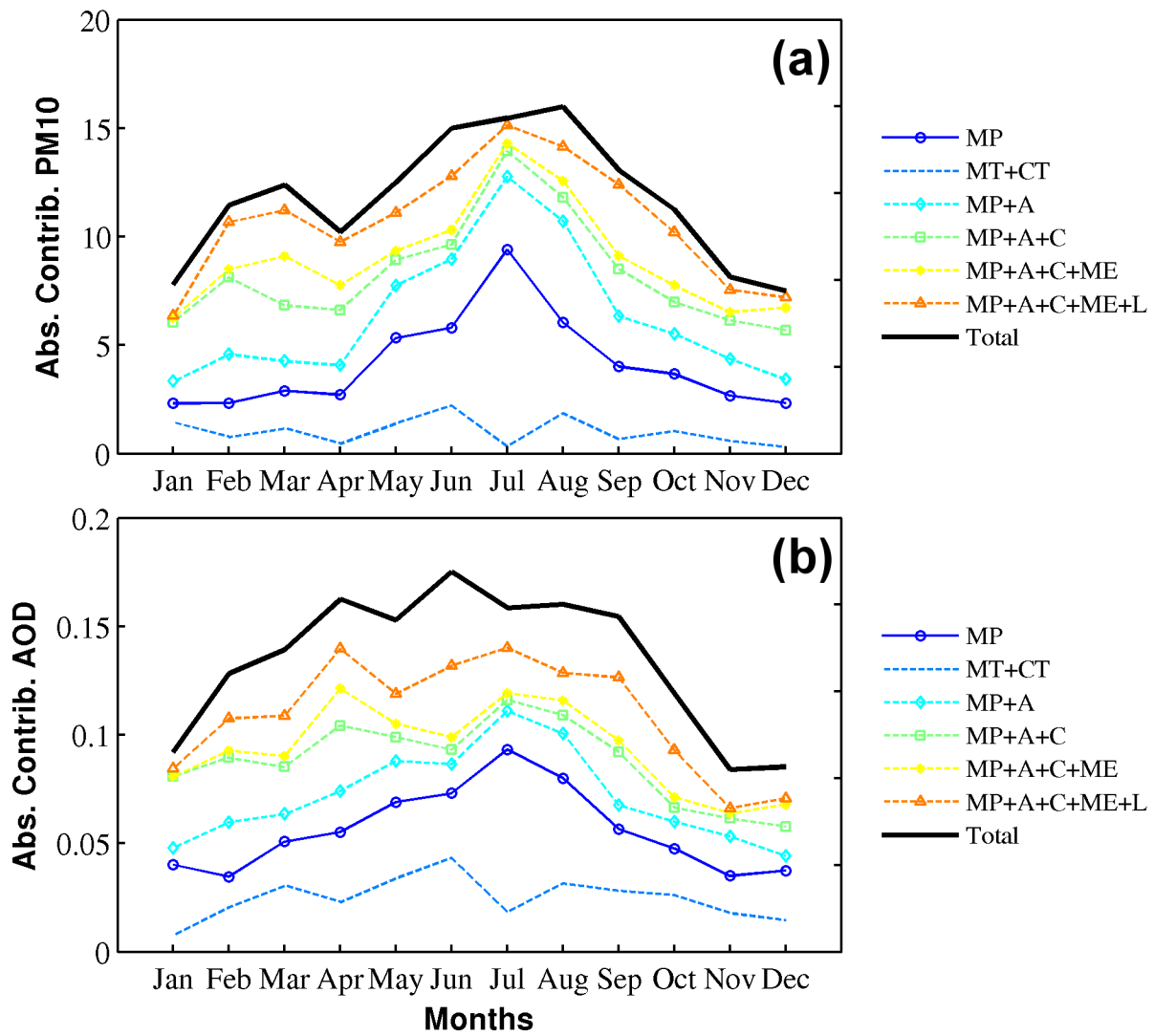


Fig. 2: Same as Fig. 1 but with accumulated cycles i.e. successive additions of different airmass groups.

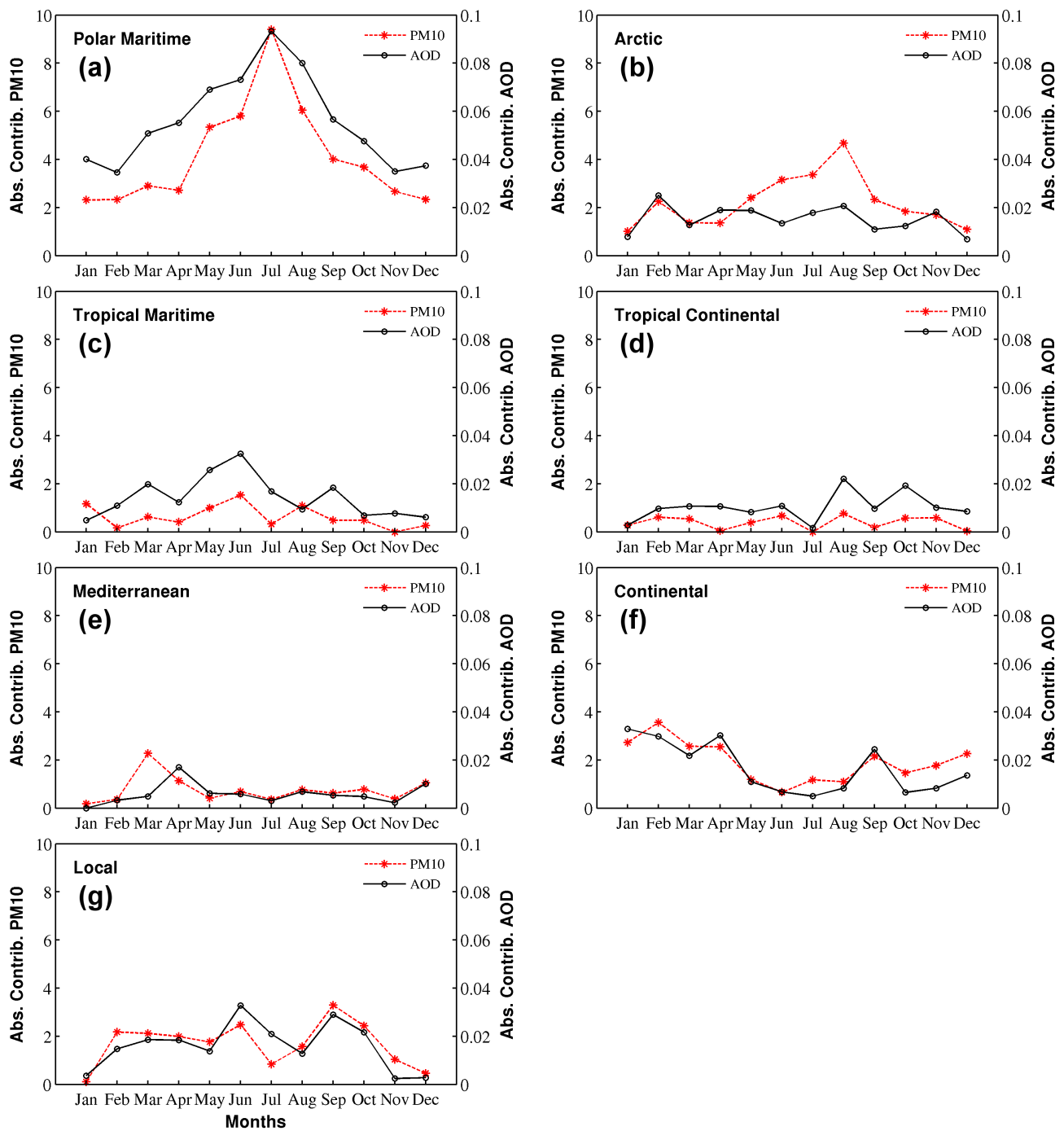


Fig. 3: Climatological annual cycle for the absolute contribution to both AOD and PM_{10} of the different airmass types : (a) Polar Maritime, (b) Arctic, (c) Tropical Maritime, (d) Tropical Continental, (e) Mediterranean, (f) Continental and (g) Local.