

Vertical variability of
DSD

F. Mercier et al.

4-D-VAR assimilation of disdrometer data and radar spectral reflectivities for rain drop size distribution and vertical wind retrievals

F. Mercier, A. Chazottes, L. Barthès, and C. Mallet

Université de Versailles-Saint-Quentin, LATMOS-IPSL, CNRS-INSU,
Laboratoire Atmosphères, Milieux, Observations Spatiales, Université Paris-Saclay, France

Received: 12 October 2015 – Accepted: 24 October 2015 – Published: 25 November 2015

Correspondence to: F. Mercier (francois.mercier@latmos.ipsl.fr)

Published by Copernicus Publications on behalf of the European Geosciences Union.

Title Page

Abstract

Introduction

Conclusions

References

Tables

Figures



Back

Close

Full Screen / Esc

Printer-friendly Version

Interactive Discussion



Abstract

This paper presents a novel approach for retrieving the vertical raindrop size distribution (DSD) profiles and vertical winds during light rain events. It consists in coupling K band Doppler spectra and ground disdrometer measurements (raindrop fluxes) in a 2-D numerical model propagating the DSD from the clouds to the ground level. The coupling is made via a 4-D-VAR data assimilation algorithm. The model is, up to now, limited to the fall of droplets under gravity, modulated by the effects of vertical winds. Since evaporation, coalescence/break-up and horizontal air motion are not taken into account, we limit the study to light, stratiform rain events in which these phenomena appear negligible.

We firstly use simulated data sets (data assimilation twin experiment) to show that the algorithm is able to retrieve the DSD profiles and vertical winds. It also demonstrates the ability of the algorithm to deal with the atmospheric turbulence (broadening of the Doppler spectra) and the instrumental noise. The method is then applied to a real case study which happened in the south-west of France during the autumn 2013. The data set collected during a long, quiet event (6h duration, rain rate between 2 and 7 mm h⁻¹) comes from an optical disdrometer and a 24 GHz vertically pointing Doppler radar. We show that the algorithm is able to explain the observations and supplies DSD and vertical wind profiles realistic compared to what could be expected for such a rain event.

A perspective for this study is to apply it to extended data sets for a more thorough validation. Other data sets would also help to parameterize more phenomena needed in the model (evaporation, coalescence/break-up) to apply the algorithm to convective rain and to evaluate the adequacy of the model's parameterization.

Vertical variability of DSD

F. Mercier et al.

Title Page

Abstract

Introduction

Conclusions

References

Tables

Figures



Back

Close

Full Screen / Esc

Printer-friendly Version

Interactive Discussion



1 Introduction

The knowledge of the raindrop size distribution (DSD) both at ground and throughout the vertical atmospheric profile is an important topic. In remote sensing, parameters of the $Z-R$ relationship, allowing to convert a radar reflectivity into a rain rate, depend on rain microphysics. These parameters are generally based on a particular DSD distribution and are supposed constant through the entire atmospheric column. In practice, rain rates estimated from reflectivity through the $Z-R$ relationship can vary at least by a factor of two depending on the DSD (List, 1988). In telecommunications, and especially for a ground to space telecommunication, rain induced attenuation also depends on rain microphysics, especially in the Ku band and beyond. More generally the observation of vertical DSD profiles is fundamental to address many questions regarding the numerous processes involved during a rain event. A large number of investigations have been conducted in order to model the vertical evolution of the DSD during rain for different meteorological situations (List and McFarquhar, 1990; Brown Jr, 1993; Hu, 1995; Prat and Barros, 2007a, b; Barros et al., 2008; Mcfarquhar, 2010). The parameterization of the different phenomena occurring during a droplet fall is a complex task due to the great number of processes involved. Among them, some are considered as predominant, notably a raindrop can breakup, coalesce or evaporate. It is also subject to sorting by gravity along with updraft, downdraft, and horizontal wind. All these processes, playing an important role in the nature of the DSD, are the subject of numerous studies. More specifically, raindrop sorting induced by vertical drafts can play an important role in the vertical DSD variability. For instance, Kollias et al. (2001) shows that updraft structures can cause horizontal and vertical sorting of raindrops with a lack of large raindrops (> 3 mm) in the updraft core and an increase at the periphery. Moreover, concerning evaporation, drizzle can never reach the ground in specific meteorological situations (VanZanten et al., 2005). On the other hand, Mcfarquhar (2010) summarizes the main results on models concerning the coalescence and break-up processes. However, he explains that these models, built on laboratory or simulation experiments gen-

Vertical variability of DSD

F. Mercier et al.

Title Page

Abstract

Introduction

Conclusions

References

Tables

Figures



Back

Close

Full Screen / Esc

Printer-friendly Version

Interactive Discussion



Vertical variability of DSD

F. Mercier et al.

Title Page

Abstract

Introduction

Conclusions

References

Tables

Figures



Back

Close

Full Screen / Esc

Printer-friendly Version

Interactive Discussion



erally suffer from a lack of validation under real conditions. Nevertheless, a very large number of direct or indirect observations of DSD are available whether on the ground, from disdrometers (among others, Joss and Waldvogel, 1967; Kruger and Krajewski, 2002; Delahaye et al., 2006), or at various heights, from the use of Doppler radars (Kollias et al., 2002; Peters et al., 2005). Several studies have been carried out to compare these different observations (Bringi et al., 2003; Tokay et al., 2009; Schleiss and Smith, 2015). However, the combination of these sources of information about the DSD is a difficult task given their very different natures. It is even more demanding when you add the different spatio-temporal scales and the various locations of the measurements.

In order to improve vertical DSD profile retrievals, this study establishes a framework allowing the assimilation at fine scale (< 5 min, 100 m) of heterogeneous observations in a dynamic model. The developed method allows the use of observations from different instruments, each with its own spatio-temporal resolution. Compared to direct observation retrievals, merging data in a dynamic model includes spatio-temporal consistency to the DSD retrievals. Moreover, it could help to assess and improve model parameterization.

In this paper, we will focus on disdrometer and vertical-radar-reflectivity collocated observations. The data are merged through the use of a 4-D-VAR assimilation algorithm. The evolution in time and space of the DSD is based on the Hu and Srivastava (1995) propagation model (see Eq. 1). Even though this model includes breakup, coalescence and evaporation along with both horizontal and vertical air motions, we work with a simplified version. In this work some hypotheses are made in order to do so. Thus the study is limited to a simple meteorological context (stratiform event of light rain) allowing a thorough validation of the approach. Some experiments are also done to underline the limits of this simple model.

The paper is organized as follows. In Sect. 2, we discuss each term of the Hu and Srivastava (1995) propagation model, namely: wind, collision and evaporation terms. Then some model simplifications are retained considering some hypotheses. General principles behind 4-D-VAR data assimilation are presented and a focus is made on the

Vertical variability of DSD

F. Mercier et al.

Title Page

Abstract

Introduction

Conclusions

References

Tables

Figures



Back

Close

Full Screen / Esc

Printer-friendly Version

Interactive Discussion



cost function and regularization terms. Disdrometer and radar observation operators are then given. Finally we describe the algorithm used to retrieve the DSD and vertical wind fields from radar and disdrometer data. Then, in Sect. 3, the instruments available and the case study are described. In Sect. 4, through a twin experiment (i.e. on simulated data), we explore the impact of observation errors in addition to non-modeled phenomena on the algorithm performances as well as the quality of the retrievals. Section 5 gives some results obtained in a stratiform real case study. Finally, Sect. 6 concludes the study. Perspectives are also drawn concerning the improvements needed to extend the application of the method to a more general context.

2 Assimilation method

The aim of this work consists in retrieving information about the drop size distribution (DSD) vertical profiles by linking the measurements made by different instruments at different scales and heights. To carry out this relationship, we will use a dynamic model which propagates the DSD through space and time (mentioned below as “propagation model”). In this section, firstly, we explicit the corresponding partial differential equation (PDE) model used, the associated discretization scheme, and the unknowns of our model. Then, we explain how the 4-D-VAR data assimilation algorithm combines the data available through the model to retrieve its unknowns. The second part of this section details this algorithm.

2.1 Propagation model

2.1.1 Complete propagation model

The DSD, noted N , is the number of raindrops by unit of volume and diameter (unit: m^{-4}). It is a function of time, position and diameter. The PDE governing the evolution

of N during the fall of droplets has the form (Hu and Srivastava, 1995):

$$\frac{\partial N}{\partial t} + \text{div}[(v\mathbf{u}_z + \mathbf{W})N] + \frac{\partial}{\partial D} \left(\tau \frac{dD}{dm} N \right) = I. \quad (1)$$

The first term of Eq. (1) represents the instantaneous variation of N . The second term is the spatial advection of droplets: \mathbf{W} is the 3-D wind field and v is the terminal velocity of droplets under gravity (which acts along the downward vertical axis \mathbf{u}_z). In this study, the parameter v is supposed to depend only on the diameter D , according to the Atlas et al. (1973) relation:

$$v(D) = 9.65 - 10.3e^{-600D}, \quad (2)$$

with D in m and v in m s^{-1} . This relation appears to be in good agreement with Gunn and Kinzer (1949) measurements (which are often used as a reference) in the diameter range [0.6–5.8 mm] (Atlas et al., 1973). The third term of Eq. (1) represents the evaporation. τ is the net rate of change of droplets masses (unit kg s^{-1}) and dD/dm is the derivative of the diameter-mass relation for spheric drops (unit m kg^{-1}). The last term I represents the collision effects (drop mass changes not due to evaporation).

2.1.2 Discussion of the different terms of the PDE

In this section, we successively analyze the different terms of Eq. (1). We explain why, in this study, the model can be reduced to only the vertical advection of drops under gravity and vertical wind. This allows us to put aside the effects of evaporation, horizontal wind, and collisions in the propagation model.

3-D wind \mathbf{W}

The vertical wind is considered to add an offset to the terminal velocity of drops. Besides, the knowledge of the real droplet vertical speed is critical to have information

Vertical variability of DSD

F. Mercier et al.

Title Page

Abstract

Introduction

Conclusions

References

Tables

Figures

◀

▶

◀

▶

Back

Close

Full Screen / Esc

Printer-friendly Version

Interactive Discussion



Vertical variability of DSD

F. Mercier et al.

Title Page

Abstract

Introduction

Conclusions

References

Tables

Figures



Back

Close

Full Screen / Esc

Printer-friendly Version

Interactive Discussion



about the DSD from the return power spectra of a vertically pointing Doppler radar. This question has been widely treated in the literature (Lhermitte, 1988; Giangrande et al., 2012; Tridon et al., 2013) and it shows that we have to take the vertical wind into account to properly deal with Doppler radar data.

The horizontal wind is the main force which makes the droplets move in the horizontal plane. However, with only a vertically-pointing radar and colocalized ground point measurements of the DSD, it is not possible to record the horizontal variability of the DSD. Consequently, we suppose that N , as a function of the diameter (this dependency will be implicit later), varies only with time and height (we limit the study to a (z, t) plane). This assumption is consistent if the horizontal air motions are weak or if the DSD is homogeneous in the horizontal plane. (Of course the DSD can be inhomogeneous with height). To ensure that this restriction is physically consistent, we will only treat quiet, stratiform light rain events (see the case study analysis in Sect. 3.3).

Evaporation (3rd term of Eq. 1)

The evaporation is mathematically modeled as a term of advection along the mass of droplets coordinate. The advection speed (parameter τ of Eq. 1) depends on the drop diameter, and on several meteorological variables, including pressure, temperature and, mainly, humidity. Seifert (2008) proposes a parameterization of this term.

According to this parameterization and for long cold stratiform rain events similar to the one treated in this study (see Sect. 3.3), we verified (not shown) that evaporation can be neglected.

Collisions (4th term of Eq. 1)

Collisions between drops can lead to coalescence (two drops producing one drop) or break-up (two drops producing at least two drops). Coalescence/break-up phenomena are generally assumed to be an important factor governing the DSD temporal evolution (Mcfarquhar, 2010; Prat et al., 2012), even if some studies reconsider this assumption

Vertical variability of DSD

F. Mercier et al.

Title Page

Abstract

Introduction

Conclusions

References

Tables

Figures

◀

▶

◀

▶

Back

Close

Full Screen / Esc

Printer-friendly Version

Interactive Discussion



(Villiermaux and Bossa, 2009; Villiermaux and Eloi, 2011). The phenomena have been widely investigated. Numerous parameterizations have been proposed. Among them, some characterize the ability of 2 drops to coalesce, depending on the energy involved in the collision (Low and List, 1982b; Brazier-Smith et al., 1972 or Straub et al., 2010).

Others are more interested by the distribution of resulting drops in case of break-up. (The resulting distributions can be based on laboratory experiments: Low and List, 1982a, b, or on numerical fluid dynamics models: Schlottke et al., 2010; Beheng, 2010.)

Since our first objective is to retrieve DSD profiles using data assimilation, we restrict ourselves to a simple framework, and we do not take into account the collisions between drops. Moreover, among the wide literature mentioned above, many authors show that the coalescence/break-up processes are negligible for low rain rates (List et al., 1987; Prat and Barros, 2007a; Barthes and Mallet, 2013). Thus, this paper will focus only on a light rain event (see Sect. 3.3).

2.1.3 Simplified propagation model

According to the previous discussion, the PDE modelling the vertical evolution of DSD, with its dependencies on time t , height z and diameter D , has finally the form:

$$\frac{\partial N}{\partial t}(t, z, D) + \frac{\partial}{\partial z} \left([v(D) + w(t, z)] N(t, z, D) \right) = 0 \quad (3)$$

with w the vertical wind (component of \mathbf{W} along \mathbf{u}_z).

This PDE is discretized on a (time/height/diameter) Arakawa C-grid (Arakawa and Lamb, 1977), meaning that N is evaluated at the grid-box centers while w is evaluated at the grid-box faces. For this discretization of the PDE, we use the finite difference scheme of Smolarkiewicz (1983), developed for advective problems in atmospheric modelling requiring to deal with a large number of variables. For this scheme, the

Courant–Friedrichs–Lewy stability condition is:

$$\Delta t \sqrt{\frac{(v+w)^2}{\Delta z^2}} < \frac{1}{\sqrt{2}} \quad (4)$$

with Δt and Δz the time and height steps, respectively. In order to be consistent with radar observations (see Sect. 3.1), we choose $\Delta z = 100$ m. Then, according to the usual range of drop terminal velocities ($v \in [0; 10]$ m s⁻¹) and of stratiform vertical wind speeds ($w \in \pm 2$ m s⁻¹), we choose $\Delta t = 5$ s. The number of time and height discretization steps are noted NT and NZ, respectively. In order to have a good coverage of the range of diameters, they are discretized from $D_{\min} = 0.2$ mm to $D_{\max} = 7.5$ mm, with a diameter step $\Delta D = 0.1$ mm. The resulting number of diameter bins ND is thus equal to 73.

We note $\tilde{\mathbf{N}} = (\tilde{\mathbf{N}}_i^n)_{n \in [1:NT], i \in [1:NZ]}$ the discretized DSD field. $\tilde{\mathbf{N}}_i^n$ indicates a specific discretized DSD at grid point (n, i) , namely, at time $t^n = t^0 + n\Delta t$ and height $z_i = z_0 - i\Delta z$. Similarly, the notations $\tilde{\mathbf{w}}$ and $\tilde{\mathbf{v}}$ stand respectively for the discretized wind field and terminal velocity vector.

The unknowns of such a model are:

1. The initial (t^0) DSD field (initial condition): $(\tilde{\mathbf{N}}_i^0)_{i \in [1:NZ]}$. However, if we suppose that the model starts running before the beginning of the rain event, we can suppose that this initial field is 0 everywhere. This is the assumption used hereafter.
2. The top (z_0) DSD field (boundary condition): $(\tilde{\mathbf{N}}_0^n)_{n \in [1:NT]}$. This corresponds to NT DSD bins, leading to NT \times ND unknowns.
3. The vertical wind time-height field $\tilde{\mathbf{w}}$ (which is, in our case, a parameter of the model) represents NT \times NZ unknowns.

In order to reduce the dimension of the problem and thus to substantially reduce the number of degrees of freedom, we have to add some a priori information. Since the

Vertical variability of DSD

F. Mercier et al.

Title Page

Abstract

Introduction

Conclusions

References

Tables

Figures



Back

Close

Full Screen / Esc

Printer-friendly Version

Interactive Discussion



density of raindrops in the atmosphere is often supposed to be gamma, we parameterize the top DSD $(\tilde{N}_0^n)_{n \in [1:NT]}$ under a gamma form:

$$N(D) = \alpha \cdot f(D; \theta, k) \quad (5)$$

with α the total volumetric number of droplets (unit m^{-3}), and f the gamma probability density function (unit m^{-1}):

$$f(D; \theta, k) = \frac{D^{k-1}}{\Gamma(k)\theta^k} e^{-\frac{D}{\theta}} \quad (6)$$

with k the shape coefficient and θ the scale coefficient.

Thanks to this parameterization, for each time step n , we limit the top DSD $(\tilde{N}_0^n)_{n \in [1:NT]}$ determination to the choice of 3 parameters and so divide the resulting number of unknowns by almost 25 (from 73 to 3). We note $\tilde{\mathbf{x}}$ the corresponding 3 parameters field (dimension: $3 \times NT$): $\tilde{\mathbf{x}} = (\tilde{\mathbf{x}}^n)_{n \in [1:NT]}$. Concerning the implementation of the algorithm, at each time step n , $\tilde{\mathbf{x}}^n$ is directly converted into a top DSD \tilde{N}_0^n using Eqs. 5 and 6, so that the propagation model can use it as an input data.

Finally, the problem is reduced to the determination of the parameter field $\tilde{\mathbf{x}}$ along with the vertical wind field $\tilde{\mathbf{w}}$, resulting in a total number of unknowns of $(NZ + 3) \times NT$.

2.2 Data assimilation algorithm

2.2.1 General principles

In the previous section, we have seen that the model propagates the top DSD $(\tilde{N}_0^n)_{n \in [1:NT]}$ through space and time according to the vertical wind $\tilde{\mathbf{w}}$. Besides the numerical model, we have a full set of observations at various heights and times (from radar and disdrometer, see Sects. 3.1 and 3.2).

The retrieval of the top DSD and of the vertical wind is thus carried out through the use of variational data assimilation which coarsely consists in minimizing the distance

Title Page

Abstract

Introduction

Conclusions

References

Tables

Figures

◀

▶

◀

▶

Back

Close

Full Screen / Esc

Printer-friendly Version

Interactive Discussion



between the model and the observations (see Fig. 1 which details our contextualized assimilation process).

In this study, the well-known 4-D-VAR data assimilation algorithm is used to allow the fusion of observations thanks to our propagation model. Detailed descriptions of its theoretical principles can be found in Kalnay (2003); Bocquet (2005), or online on the European Centre for Medium-Range Weather Forecasts (ECMWF) website: <http://www.ecmwf.int/sites/default/files/Data%20assimilation%20concepts%20and%20methods.pdf>.

To perform a 4-D-VAR assimilation, we still have to build a 4-D-VAR cost function which is crucial since it is used to evaluate the gap between the observations and the top DSD $(\tilde{N}_0^n)_{n \in [1:NT]}$ propagated by the model to different times and heights. The numerical minimization of the cost function allows to retrieve a set of unknowns (namely, $\tilde{\mathbf{x}}$ and $\tilde{\mathbf{w}}$) which are able to explain the observations.

In the data assimilation context, the cost function has usually the form:

$$J(\tilde{\mathbf{N}}) = J_b(\tilde{\mathbf{N}}) + J_o(\tilde{\mathbf{N}}), \quad (7)$$

with $\tilde{\mathbf{N}}$ the discretized DSD as previously defined. J_o is the observation term of the cost function, presented later. J_b is the background term (also called first guess) of the cost function. This last term keeps the solution in the vicinity of a given a priori state. In our case, we suppose that there is no background available. Moreover, we add regularization and penalization terms in order to provide an admissible answer.

The cost function finally used has the form:

$$J(\tilde{\mathbf{x}}, \tilde{\mathbf{w}}) = J_o(\tilde{\mathbf{x}}, \tilde{\mathbf{w}}) + J_r(\tilde{\mathbf{x}}, \tilde{\mathbf{w}}) + J_x(\tilde{\mathbf{x}}) + J_w(\tilde{\mathbf{w}}), \quad (8)$$

where the cost function is the sum of a regularization term J_r along with two penalization terms J_x , dedicated to $\tilde{\mathbf{x}}$ the DSD parameter field, and J_w , dedicated to $\tilde{\mathbf{w}}$ the wind field. These three terms will be discussed and explained in Sect. 2.2.4.

Vertical variability of DSD

F. Mercier et al.

Title Page

Abstract

Introduction

Conclusions

References

Tables

Figures



Back

Close

Full Screen / Esc

Printer-friendly Version

Interactive Discussion



2.2.2 Observation term of the cost function J_o

J_o , the observation term of the cost function, has the form:

$$J_o(\tilde{\mathbf{N}}) = \frac{1}{2} \sum_{n \in [1:NT]} \sum_{i \in [1:NZ]} \left\| \mathbf{y}_i^n - \mathbf{H}_{i,n} \tilde{\mathbf{N}}_i^n \right\|^2. \quad (9)$$

For a given grid point (n, i) , \mathbf{y}_i^n is the vector composed of the observations from radar and disdrometer. $\mathbf{H}_{i,n}$ is the operator projecting the DSD on the observation space. Note that, here, the covariance matrix of the observation error is the identity.

At time t^n , using the vertical wind field $\tilde{\mathbf{w}}$, the model has propagated the top DSD $\tilde{\mathbf{N}}_0^{n'}$ from times $t^{n'} < t^n$. We note M_i^n the numerical model propagating all the necessary top DSD $\tilde{\mathbf{N}}_0^{n'}$ to compute $\tilde{\mathbf{N}}_i^n$, the DSD at time t^n and height z_i . Then, we have:

$$\tilde{\mathbf{N}}_i^n = M_i^n(\tilde{\mathbf{x}}, \tilde{\mathbf{w}}). \quad (10)$$

With $\tilde{\mathbf{x}}$ the 3 DSD parameters field as defined above (see Sect. 2.1.3). Consequently, the cost function J_o can be expressed as a function of the unknowns $\tilde{\mathbf{x}}$ and $\tilde{\mathbf{w}}$ only:

$$J_o(\tilde{\mathbf{x}}, \tilde{\mathbf{w}}) = \frac{1}{2} \sum_{n \in [1:NT]} \sum_{i \in [1:NZ]} \left\| \mathbf{y}_i^n - \mathbf{H}_i^n M_i^n(\tilde{\mathbf{x}}, \tilde{\mathbf{w}}) \right\|^2. \quad (11)$$

2.2.3 Observation operator \mathbf{H}

The observation operator, \mathbf{H} , can be considered as an aggregation of 2 sub-operators \mathbf{H}_{dis} and \mathbf{H}_{dop} , modeling the disdrometer and radar observations, respectively.

For disdrometer measurements, we build an operator \mathbf{H}_{dis} able to convert the propagation model ground ($i = \text{NZ}$) discretized DSD $(\tilde{\mathbf{N}}_{\text{NZ}}^n)_{n \in [1:NT]}$ into disdrometer like measurements (i.e. drop histograms in our case). A disdrometer records a flux of droplets

crossing a given area (A , in m^2). Then, at time t^n and for drops in the diameter class ρ , this operator has the form:

$$\mathbf{H}_{\text{dis}}(\tilde{N}_{\text{NZ},\rho}^n) = \tilde{N}_{\text{NZ},\rho}^n \cdot A \cdot (v_\rho + \tilde{w}_{\text{NZ}}^n) \Delta t \Delta D \quad (12)$$

For radar measurements, we build an operator \mathbf{H}_{dop} converting model DSD into Doppler radar like measurements. Radars operating in a vertically pointing mode provide the distribution of the radar return power according to the Doppler velocity (Giangrande et al., 2010). The retrieval of the DSD directly from these Doppler spectra is an inverse problem (Kollias et al., 2002) mixing various phenomena. Here we build a “direct” operator which acts in reverse order (from DSD to Doppler spectra). It takes into account vertical air motion and rain attenuation. At a given time and location, this operator can be computed according to the 3 following steps:

1. Calculate the theoretical non attenuated and non noisy spectra $F(v)$ (s m^{-2}) from a DSD $N(D)$:

$$F(v) = \sigma(D)N(D)\frac{dD}{dv}(v), \quad (13)$$

where, given a drop diameter D , $\sigma(D)$ is the backscattering cross-section (unit m^2), calculated for the radar frequency according to the Mie scattering theory (Ulaby et al., 1982). dD/dv is the derivative of the diameter-velocity relation.

2. Then deduce the final attenuated spectra $F_a(v)$, encompassing both the effects of the attenuation and of the vertical air motion w .

$$F_a(v) = F(v + w)e^{-2\int_0^z K(r)dr}. \quad (14)$$

The exponential part of Eq. (14) adds the effect of rain attenuation (see for instance Peters et al., 2005), with $K(z)$ the attenuation coefficient at height z (unit m^{-1}), calculated through: $K(z) = \int_D \sigma_{\text{ext}}(D)N(D,z)dD$, with $\sigma_{\text{ext}}(D)$ the extinction cross-section (Mie theory).

Vertical variability of DSD

F. Mercier et al.

Title Page

Abstract

Introduction

Conclusions

References

Tables

Figures

◀

▶

◀

▶

Back

Close

Full Screen / Esc

Printer-friendly Version

Interactive Discussion



Vertical variability of
DSD

F. Mercier et al.

Title Page

Abstract

Introduction

Conclusions

References

Tables

Figures

◀

▶

◀

▶

Back

Close

Full Screen / Esc

Printer-friendly Version

Interactive Discussion



3. Finally, for minimization purposes, F_a is converted in a logarithmic scale, resulting in a logarithmic bounded attenuated spectra $Z(v)$:

$$Z(v) = \ln(10^{10}F_a(v) + 1). \quad (15)$$

We recall that the operator run on the computer is necessarily a discretized version of what is presented here.

2.2.4 Regularization and penalization terms

In this section, we present a brief description of the penalization term J_r as well as the two regularization terms J_x and J_w of the cost function (see Eq. 8):

1. J_r : we have seen in Sect. 2.1.3 that the time step of the model is set to 5s. It means that $\tilde{\mathbf{x}}$ and $\tilde{\mathbf{w}}$ have to be retrieved at this resolution. However, the minimal resolution of the instruments is generally superior to this value (10s in our case, see Sects. 3.1 and 3.2). Then, J_r avoids the assimilation algorithm producing high frequency fluctuations on both of the unknowns $\tilde{\mathbf{x}}$ and $\tilde{\mathbf{w}}$ by giving lower cost to smooth fields.
2. J_x allows to proceed to the minimization under constraints for $\tilde{\mathbf{x}}$, the three DSD parameters penalization term. Because the instruments used are not able to record the complete drops diameter range, it is used to avoid the assimilation algorithm producing unphysical DSD. To this end, we add this penalization term which avoids the components of the $\tilde{\mathbf{x}}$ DSD parameters field to go out of predefined ranges: $[0; 8000] \text{ m}^{-3}$ for α ; $[0; 3]$ for k ; $[0; 10^{-3}] \text{ m}$ for θ .
3. J_w : the vertical wind field $\tilde{\mathbf{w}}$ modifies the advection velocities and shifts the Doppler spectra. Then, the vertical wind is mainly controlled (in the assimilation algorithm) by the Doppler spectra. If no spectra are available for a given vertical layer, the assimilation algorithm could produce unphysical temporal fluctuations of

the vertical wind which would not imply significant extra cost without the term J_w . Since there may be no Doppler spectra available at given heights (see Sect. 3.1), we use J_w , the wind penalization term, to force the vertical wind to stay close to 0 by adding extra-cost to strong vertical winds.

2.2.5 Minimization of the cost function and parameter estimation

The numerical minimization of the cost function $J(\tilde{\mathbf{x}}, \tilde{\mathbf{w}})$ goes through the calculation of its gradient. Note that all the regularization terms are easily differentiable. The gradient of the observation term (J_o) of the cost function is:

$$\nabla J_o(\tilde{\mathbf{x}}, \tilde{\mathbf{w}}) = \sum_{n \in [1:NT]} \sum_{i \in [1:NZ]} {}^t \mathbf{M}_i^{nT} \mathbf{H}_i^n (y_i^n - \mathbf{H}_i^n M_i^n(\tilde{\mathbf{x}}, \tilde{\mathbf{w}})), \quad (16)$$

with ${}^t \mathbf{M}_i^n$ the adjoint of the linearized version of the operator M_i^n .

We use the YAO software (Thiria et al., 2006; Nardi et al., 2009), developed by the LOCEAN (Laboratoire d’Oceanographie et du Climat). It provides a simple method for deriving the adjoint of the model. For the numerical minimization itself, it is coupled with M1QN3 (Gilbert and Lemaréchal, 2006), a quasi-Newton algorithm to solve unconstrained optimization problems. Once the propagation model implemented, it allows the use of observations to compute realistic estimations for the unknowns.

3 Measuring instruments and case study

In this section, we firstly give the characteristics of the two instruments used in this study, namely a Doppler 24 GHz radar, and a disdrometer. Then, we present the characteristics of the case study treated.

Title Page

Abstract

Introduction

Conclusions

References

Tables

Figures

◀

▶

◀

▶

Back

Close

Full Screen / Esc

Printer-friendly Version

Interactive Discussion



3.1 Micro-Rain Radar (MRR)

The first instrument used in this study is a micro-rain radar (MRR, Peters et al., 2005), developed by METEK GmbH, Germany, and belonging to Météo France. The MRR is a 24 GHz frequency modulated, continuous wave (FM-CW) vertically pointing Doppler radar, with a small transmit power (50 mW) and a beamwidth of 2° . The raw return power spectrum is processed by the MRR, see METEK (1998), which supplies the spectral reflectivities. In our assimilation process, only the spectral reflectivities will be used as observations (noted F_{MRR}).

The MRR software also supplies DSD estimations (obtained through an inversion algorithm of the Doppler spectra, including attenuation correction) and estimations of different moments of the DSD (liquid water content, rain rate, reflectivity factor). Those quantities, mentioned as “MRR products”, will be used as a comparison framework for the DSD N retrieved by our algorithm.

The radar gates have a 100 m length width. The MRR provides data up to a 3100 m height. The minimal temporal resolution is 10 s. This fine temporal resolution will allow us to integrate the observations over various time periods. This integration time will be referred later as “observation window”. The Doppler velocities used range from 0.56 up to 9.54 m s^{-1} , with a step of 0.19 m s^{-1} . According to the maker recommendations (METEK, 1998), the MRR records for the 2 first radar gates ($< 200 \text{ m}$) will not be used in the assimilation process.

3.2 Dual-beam spectropluviometer (DBS)

The DBS is an optical disdrometer developed by the LATMOS, whose main advantage is its ability to cover a very large range of raindrop diameters (Delahaye et al., 2006). Its collecting area is 0.01 m^2 . For each recorded drop, the DBS supplies a triplet (time of arrival/spherical equivalent diameter/fall velocity), allowing the measurement of drop flux time series, noted N_{DBS} , used as observations in the assimilation algorithm. We

Vertical variability of DSD

F. Mercier et al.

Title Page

Abstract

Introduction

Conclusions

References

Tables

Figures



Back

Close

Full Screen / Esc

Printer-friendly Version

Interactive Discussion



apply a diameter threshold at 0.4 mm and so will only conserve the drops above this diameter.

3.3 Case study data set

The two instruments described above have been deployed in Ardèche (south-west of France), during the autumn 2013, in the context of the HyMeX campaign (HYdrological cycle in the Mediterranean EXperiment, see for instance Bousquet et al., 2014). Figure 2 presents a topographic map of the area. The two instruments (DBS and MRR) were colocalized at Le Pradel (44.6° N, 4.5° E), in a mountainous area called the Cevennes-Vivarais, subject to so-called Cévenol rain events (Molinié et al., 2012). However, for the purpose described in Sect. 2.1.2, we will not work on intense rain events, but rather on a stratiform event of light rain which occurred on 12 October 2013.

This event occurred at Le Pradel in the afternoon, from 16:30 to 21:30 UTC. It is a long rain event characterized by low but regular rain rates at the ground level (the disdrometer was used to record 2 min rain rates always between 1 and 6 mm h⁻¹, see Fig. 3, red line). The event is also quite homogeneous. All the Météo France automatic weather stations located around Le Pradel (see Fig. 2) record consistent cumulative rainfall: 11.5 mm at Le Pradel, 12 mm at Aubenas, and 12.9 mm at Berzème. From the MRR (Fig. 4, left) and DBS (Fig. 3, red) measurements, we can distinguish two distinct phases in the event. Until 18:15, there is very light rain, with only small drops (rain rates around 2 mm h⁻¹ and very low reflectivities and characteristic velocities). After 18:15, there are short periods with higher rain rates (4–5 mm h⁻¹) and, mainly, higher reflectivities and falling velocities (up to 35 dBZ and 8 m s⁻¹).

The temperature was quite low: around 8.5°C at the ground level (Le Pradel station, 278 m height). Assuming a gradient of -1°C/150 m, we found a freezing level at 1550 m, which is consistent with the MRR records (on Fig. 4, left, we see the bright band around 1500 m). As a consequence, the fall height of the drops in our assimilation algorithm will be set to 1400 m in order to avoid bright band problems (the propa-

Vertical variability of DSD

F. Mercier et al.

Title Page

Abstract

Introduction

Conclusions

References

Tables

Figures



Back

Close

Full Screen / Esc

Printer-friendly Version

Interactive Discussion



**Vertical variability of
DSD**

F. Mercier et al.

Title Page

Abstract

Introduction

Conclusions

References

Tables

Figures



Back

Close

Full Screen / Esc

Printer-friendly Version

Interactive Discussion



gation model is not able to treat the melting layer). Note that the blank strip on the right of Fig. 4 is explained by this choice. The 10m horizontal southerly wind recorded by Météo France at Berzème station is low during the event, ranging from 1.0 to 2.3 m s^{-1} , and the humidity rates are always close to 100% (97% at Berzème station, 99% at Aubenas', see Fig. 2). This rules in favor of the choice to neglect horizontal wind and evaporation effect in the propagation model (Sect. 2.1.2).

For this case study, the number of time and height discretization steps (NT and NZ, see Sect. 2.1.3) is set to 4900 and 15, respectively.

4 Simulated data (Twin experiment)

We have seen in the last section that the case study chosen to apply our retrieval algorithm is consistent with the propagation model underlying hypothesis. (It assumes DSD driven by gravity and vertical wind alone. Thus the effects of evaporation, collisions and horizontal wind are discarded). However, other phenomena remain unaccounted for in the model. Since this could impair the ability of the model to satisfactorily manage our real case study, we have to assess the impact of two of these phenomena (instrumental noise and turbulence) on the assimilation retrievals. This is done, in this section, by performing a twin experiment, whose principle is described below.

4.1 Description of the twin experiment process

Twin experiments consist in applying the assimilation process to simulated data with properties analogous to real data.

Figure 5 schematically summarizes all the successive steps of our twin experiment (i.e. to simulate realistic observations and to run the assimilation). Firstly, we simulate realistic series of top DSD parameters and vertical winds (step a on Fig. 5). These parameters are what we would like to retrieve with the algorithm. In Sect. 4.2, we will explain how these fields are simulated. Then, these series are propagated through

Vertical variability of DSD

F. Mercier et al.

Title Page

Abstract

Introduction

Conclusions

References

Tables

Figures

◀

▶

◀

▶

Back

Close

Full Screen / Esc

Printer-friendly Version

Interactive Discussion



space and time using the propagation model (step b) and “true” (namely, by supposing the model perfect) DBS and MRR data are produced through the use of the observation operators (step c). All the fields obtained through this process (DSD and vertical wind, as well as observations like Doppler spectra) are mentioned below as “true”.

Then, from these fields, we simulate realistic MRR and DBS observations by adding model and instrumental errors (instrumental noise and turbulence, see Sect. 4.3), which cannot be directly produced by the propagation model (step d) since they are not present in the model despite their effects on the measurements. These data are mentioned below as “observed”. The process used to simulate these observed fields is detailed in Sect. 4.3.

Finally, the assimilation algorithm estimates an optimal set of unknowns explaining these observations (step e). Assimilated $\tilde{\mathbf{x}}$ and $\tilde{\mathbf{w}}$ fields are then propagated by the model (step f) and the observation operators (step g). All these retrieved fields are mentioned below as “assimilated”. They will be compared to true and observed fields. The results of this data assimilation twin experiment are detailed in Sect. 4.4.

This twin experiment demonstrates the ability of the assimilation algorithm to produce coherent DSD fields. It also shows how it indirectly handles the turbulence, underlining its efficiency despite the presence of non modeled phenomena. Note that in this section, all the observations (MRR spectra F_{MRR} and DBS DSD N_{DBS}) are integrated over a 2 min observation window (if not, it will be explicitly specified).

4.2 Simulation of top DSD parameters ($\tilde{\mathbf{x}}$) and vertical wind field ($\tilde{\mathbf{w}}$)

First, we have to simulate realistic time series of top DSD parameters ($\tilde{\mathbf{x}}$). To do this, we use the rain rates recorded on the ground by the DBS during the case study presented above (Sect. 3.3). From each of the successive disdrometer rain rates, we calculate the 2 parameters of an exponential DSD according to Marshall and Palmer (1948). This time series of Marshall–Palmer DSD (special case of gamma DSD) is our simulated top DSD $(\tilde{N}_0^n)_{n \in [1:\text{NT}]}$, which is used as input in the propagation model.

Vertical variability of DSD

F. Mercier et al.

Title Page

Abstract

Introduction

Conclusions

References

Tables

Figures

◀

▶

◀

▶

Back

Close

Full Screen / Esc

Printer-friendly Version

Interactive Discussion



We also need a time-height field of vertical winds \tilde{w} , (resolution 5 s, 100 m) to run the propagation model and simulate observations. We have seen that our algorithm is, up to now, limited to stratiform quiet rain events. For this kind of events, vertical winds range in $\pm 2 \text{ m s}^{-1}$, with temporal correlations around 2–5 min and spatial correlations around 500–1000 m (Giangrande et al., 2010). Here is the process used to simulate such a field. (1) We create a 5 s/100 m field of independent, normally distributed, random variables. (2) We average this field over a mobile (2 min/500 m) window. (3) We scale the field to get winds ranging in $\pm 2 \text{ m s}^{-1}$. In the end, we obtain a wind field with triangular correlations corresponding to the expected values. Figure 7 (top, on the left) shows a part of the vertical wind field used in the twin experiment (i.e., on simulated data). Note that the winds are positive downward.

4.3 Simulation of realistic observations

We detail in this section the process used to simulate realistic observations (addition of turbulence effects and instrumental noise). The purpose of this step is to build observations consistent with what is expected from real measurements.

4.3.1 Radar Doppler spectra

We want to simulate Doppler spectra as they would be recorded by a MRR in realistic conditions. For this purpose, we run the propagation model and save the attenuated reflectivities calculated by the algorithm (observation operator) from the DSD (variable $F_a(v)$, see Eq. 14). Then, for each spectrum, we apply the following process. (1) Addition of the atmospheric turbulence impact. Turbulence can be seen as a fine scale modulation of the vertical wind. For a time and location, the effective vertical air motion is the sum of the mean vertical wind (defined above and taken into account in the propagation model) and of a random variable, modeling the turbulence (not taken into account). Mathematically, the impact of turbulence on the Doppler spectra can be modeled as the convolution of the Doppler spectra with a gaussian function (Tridon et al.,

2013). So, the turbulence is added to our spectra by applying a discretized version of the convolution operator:

$$F_t(v) = F_a(v) * \frac{1}{\sqrt{2\pi}\sigma_t} e^{-\frac{v^2}{2\sigma_t^2}}, \quad (17)$$

with $*$ the convolution operator and σ_t the width of the turbulence spectrum. We use $\sigma_t = 0.7 \text{ ms}^{-1}$, considered a realistic but large value (Peters et al., 2005; Tridon et al., 2013) implying the use of a significant spectral broadening. (2) Addition of instrumental gaussian white noise (intensity 1 dB) to F_t . On Fig. 6, on the right, the dotted lines show observed Doppler spectra at different heights.

4.3.2 Disdrometer

We simulate the records of a ground disdrometer. For this purpose, we run the propagation model and save the discretized DSD in the grid box just above the ground. For a given time and diameter class ρ , we note n_ρ the corresponding number of drops in a given box. Then, for each of these n_ρ drops, we choose a diameter (following a uniform law in the interval $[\rho; \rho + 1]\Delta D + D_0$) and a velocity. This velocity is the theoretical Atlas velocity for the diameter modulated by a gaussian white noise (as presented previously) representing the atmospheric turbulence. The height of the drop is finally uniformly drawn in the interval $[0; 100]$ m (height range of the grid box).

At the end, we check which drops, among the n_ρ , will touch the ground during the time interval Δt (and so will be seen by the disdrometer). The drops touching the ground are recorded as observed by the disdrometer. This process is a way to mimic the natural variability of rain and to run in a stochastic way the observation operator defined by Eq. (12).

Vertical variability of DSD

F. Mercier et al.

Title Page

Abstract

Introduction

Conclusions

References

Tables

Figures



Back

Close

Full Screen / Esc

Printer-friendly Version

Interactive Discussion



4.4 Results – robustness of the algorithm

In this section, we firstly assess the ability of the assimilation process to reproduce the observations. Then, we compare the true and assimilated DSD \tilde{N} and wind fields \tilde{w} . Finally, we investigate how the model response is impacted by the size of the observations window. First of all, we have to introduce the numerical indicators needed after to perform this investigation.

4.4.1 Error Indicators

In this section, we define the indicators used to quantitatively evaluate the performance of the algorithm. Choosing error indicators is rather sensitive to the range of values under study. For fields with magnitude far from 0 and ranging in small intervals, we use relative indicators without any risk of giving too much importance to very low (close to 0) data. We define the two following indicators: the Mean Absolute Percentage Error (MAPE), and the relative bias (rbias), defined by:

$$\text{MAPE}(\%) = 100 \cdot \frac{1}{P} \sum_{i=1}^P \frac{|A_i - B_i|}{|A_i|}, \quad (18)$$

$$\text{rbias}(\%) = 100 \cdot \frac{\sum_{i=1}^P (A_i - B_i)}{\sum_{i=1}^P A_i}, \quad (19)$$

where A and B are the respective reference and evaluated fields rearranged in vector forms. P stands for the dimension of the vectors.

Fields having very low or negative values render the 2 previous indicators inappropriate. For these fields, we use the Mean Absolute Error (MAE), defined by:

$$\text{MAE} = \frac{1}{P} \sum_{i=1}^P |A_i - B_i|. \quad (20)$$

Title Page

Abstract

Introduction

Conclusions

References

Tables

Figures



Back

Close

Full Screen / Esc

Printer-friendly Version

Interactive Discussion



4.4.2 Observations reproduction

In the following analysis, we use the denominations “true”, “observed” and “assimilated” (see Sect. 4.1 and Fig. 5). Table 1 gives the MAPE and the relative biases between true, observed and assimilated characteristic velocities and spectral widths.

We recall (Sect. 4.3.1) that the atmospheric turbulence, which broadens the Doppler spectra, is included in the observations but not in the true data. Consequently, for the observed spectra, we obtain spectral widths significantly larger (+12%) than for the true ones.

The assimilated spectra are also broadened compared to the true ones. But to a lesser extent (spectral width 9.5% larger). They are slightly less broadened than the observed spectra (−2.3%). We also note that the MAPE and r bias have almost the same absolute values (Table 1, 3rd and 4th rows). This means that the sign of the differences between the 2 compared fields are the same for almost all the grid points. This implies that all spectra are broadened by turbulence independently of time and height.

On the contrary, the characteristic velocity is not significantly affected by the addition of turbulence impact on observed fields (bias −0.36%, MAPE 0.40%). Consequently, the characteristic velocities are correctly reproduced by the algorithm (biases and MAPE inferior to 2%).

To reproduce the turbulence broadening, the algorithm can act on the 2 unknown fields $\tilde{\mathbf{x}}$ and $\tilde{\mathbf{w}}$. Firstly, it can affect the DSD shape, by adding small and large droplets and removing drops of intermediate diameters. But because the DSD is directly controlled on the ground by the disdrometer (observation N_{DBS}), it forces the algorithm to well reproduce the ground DSD $(\tilde{N}_{\text{NZ}}^n)_{n \in [1:\text{NT}]}$. Between true and assimilated disdrometer observations, we find a MAE (see Table 1, last row) of 27 mm^{-1} , while it is 42 mm^{-1} between truth and observations (the mean number of drops being 689 mm^{-1}). Since this solution (modification of DSD shapes) is too costly, the algorithm uses the second solution, which consists in using the fast modulations of the vertical wind $\tilde{\mathbf{w}}$ at fine res-

Vertical variability of DSD

F. Mercier et al.

Title Page

Abstract

Introduction

Conclusions

References

Tables

Figures



Back

Close

Full Screen / Esc

Printer-friendly Version

Interactive Discussion



Vertical variability of DSD

F. Mercier et al.

Title Page

Abstract

Introduction

Conclusions

References

Tables

Figures



Back

Close

Full Screen / Esc

Printer-friendly Version

Interactive Discussion



olution. We have seen that all the observations are integrated over a 2 min observation window (Sect. 3.1), while the wind is retrieved at the 5 s model resolution, resulting in 2 min averagings consistent with the turbulence broadening. This phenomenon can be seen in the 3rd column of Table 2, which shows the MAE between true and assimilated wind fields for an observation window of 2 min and for various field resolutions (spreading from 10 s to 8 min). We can see that the MAE of the 10 s resolution wind fields is large (0.46 ms^{-1}) compared to the true absolute mean value (0.34 ms^{-1} , see last row of Table 2) but it significantly decreases for resolutions greater than 2 min. This means that there are fluctuations at the 5 s model resolution which do not correspond to the physics. They are numerical artefacts produced by the model which uses any degree of freedom available to reproduce the broadening observed in the measurements.

An example of Doppler spectra at a 2 min resolution is given in the right part of Fig. 6. In this plot, examples of vertical profiles of Doppler spectra are shown. On the observed and assimilated spectra, we can clearly see the turbulence broadening, absent in true ones. Since this last result (broadening on assimilated spectra) is due to a turbulence reproduction (using the wind resolution) and not to a modification of the DSD, the good behavior of the assimilation algorithm for realistic stratiform rain is thus assessed.

4.4.3 Wind and DSD reproduction

Even if we confirmed the ability of the assimilation algorithm to handle the turbulence, we still have to control some other rain characteristic quantities.

As in the previous section, we compare in Table 2 the MAE between true and assimilated fields for an observation window of 2 min and for various resolutions. The quantities Z_e and D_m (moments of the DSD, see caption of Table 2) are very well reproduced by the assimilation algorithm, with MAE very small compared to the true absolute mean values (for instance, at 2 min field resolution, MAE of 0.80 dB and $24.7 \mu\text{m}$ compared to true absolute mean values of 27.6 dBZ and 1.12 mm, respectively).

The results are slightly less satisfactory for the LWC (10.0 vs. $142 \mu\text{g m}^{-3}$) and, mostly, for N_0 (241 vs. 1070). This is due to the fact that the number of drops is mainly

Vertical variability of DSD

F. Mercier et al.

Title Page

Abstract

Introduction

Conclusions

References

Tables

Figures



Back

Close

Full Screen / Esc

Printer-friendly Version

Interactive Discussion



driven by the number of very small drops (< 0.4 mm), which are not seen by the disdrometer. Moreover, with their very low backscattering cross-section, they have almost no weight in the cost function. They are consequently not effectively controlled. However, we can note that these drops represent a very low mass of water and that their non control is not critical. (Moreover, since the top DSD is parameterized, we cannot obtain unreasonable values.)

We have seen that the 2 min MAE for the wind field is quite satisfactory (meaning that the global trends of the wind field have been reproduced by the algorithm). But we would also like to know if the wind patterns are well reproduced. Figure 7 shows extracts of the true and assimilated wind fields, as well as the mean and standard deviations of these fields according to the height (radar gate) and the temporal auto-correlation functions. The top images confirm a satisfactory reproduction of the wind fields. We also see that the correlation time, the absolute mean values and the standard deviations are well reproduced by the assimilation, even if the standard deviation results are more dubious for the two lowest radar gates, where no Doppler spectra are available (as seen in Sect. 3.1).

The rain rates are also satisfactory for resolutions over 2 min (Table 2, column 4), with a MAE of 0.14 mm h^{-1} with a mean value of 2.18 mm h^{-1} .

4.4.4 Impact of the observations window

In this last paragraph, we quickly assess the influence of the integration time of the observations (observation window, see Sect. 3.1). Table 2 presents the MAE between different fields depending on the observations window: 10 s or 2 min. We have seen that a 2 min observations window allows the algorithm to use the 5 s model resolution to reproduce the turbulence spectral broadening by adding artificial synthetic fluctuations. If the observation window is reduced to 10 s, no room is left for fluctuation. Consequently, the MAE for the wind are smaller with 10 s observations window for fine resolutions (for instance, 0.21 vs. 0.46 m s^{-1} at 10 s).

Because the model fits, at best, the 10 s resolution, it is natural that it does less good at the 2 min resolution and hence beyond.

The results are globally the same for the other parameters of Table 2. Because the algorithm cannot use the wind $\tilde{\mathbf{w}}$ to adjust the assimilated spectra to the observed broadened ones, it has no choice but to fit the observations through a change of the top DSD (excess of small and large drops) in order to produce the best compromise at the cost level. This effect is visible on the N_0 column of Table 2: the results are worse for a 10 s observation window whatever the resolution (excess of small droplets). We can also note that the spectra are significantly noisier at 10 s, implying a tougher minimization.

Finally, we conclude that an observation window of 2 min is a better choice than 10 s. It allows the algorithm to handle the turbulence and limit the instrumental noise influence. Thus the assimilation in the next section will be run with a 2 min observation window.

5 Results for real case study

In this section, we apply the assimilation algorithm to the real data case study described in Sect. 3.3. Again, we show that the assimilation algorithm is efficient (able to fuse different observations) for this case study. We then show that it produces spatio-temporally coherent wind and DSD fields.

5.1 Observation reproduction

We use again the indicators introduced in Sect. 4.4.1 (see Table 3). Firstly, we note that the disdrometer observations N_{DBS} are well reproduced. The MAE between observed and assimilated data is 102 mm^{-1} , while the mean observed number of drops is 1080 mm^{-1} . These results are very similar to results of the previous simulated study, meaning that the algorithm successfully reproduces the disdrometer observations. Fig-

Vertical variability of DSD

F. Mercier et al.

Title Page

Abstract

Introduction

Conclusions

References

Tables

Figures



Back

Close

Full Screen / Esc

Printer-friendly Version

Interactive Discussion



ure 3 shows the ground rain rates as calculated from the disdrometer observations (red) and as reproduced by the assimilation algorithm (blue). It confirms that the algorithm is efficient for ground data. We will later come back to the remaining differences between the 2 rain rate time series.

Table 3 also presents results concerning the MRR observations. Even if the MAPE for the characteristic velocity W_c and spectral width SW are larger than the ones on simulated data, they remain satisfactory (mean error of 4.4 and 14 %, respectively).

The 3 columns on the right of Table 3 present these results at different heights and help us to analyze the vertical structure of MRR observations and assimilated data. When considering reflectivity η (0 order moment, second row), we see that there is globally no bias between observed and assimilated reflectivities (-0.017 dB). However, the assimilation process overestimates the reflectivities at the top ($+0.60$ dB) and underestimates the reflectivities close to the ground (-0.40 dB), while there is no significant bias at middle heights (-0.12 dB). Since the model propagates the drops from the top to the bottom, without diameter change, besides the attenuation, no phenomenon taken into account can produce a height-decreasing of the mean reflectivity at the event scale. This means that the MRR observations display more reflectivity decreasing with height than what can be explained by the model attenuation. This phenomenon is confirmed by the left part of Fig. 4. We clearly see that the rain rate (top) and reflectivity factor (middle) display a significant decrease with height for the MRR products. This phenomenon cannot be reproduced by our algorithm (right part of Fig. 4) which more or less (depending on the wind field, see Sect. 5.3 below) conserves these quantities with height. We also see that the algorithm reaches a compromise between the different heights, so that the assimilated reflectivities (and hence the rain rates and other DSD parameters, displayed in Fig. 4) are globally (compared to MRR products) slightly overestimated on the top and underestimated on the ground. This would also explain why, on Fig. 3, assimilated rain rates peaks are generally underestimated compared to disdrometer data. Figure 8 shows the bottom DSD (continuous lines) for the MRR products (200–300 m, red), the observed DBS measurements (on the ground, in

**Vertical variability of
DSD**

F. Mercier et al.

Title Page

Abstract

Introduction

Conclusions

References

Tables

Figures

◀

▶

◀

▶

Back

Close

Full Screen / Esc

Printer-friendly Version

Interactive Discussion



**Vertical variability of
DSD**

F. Mercier et al.

Title Page

Abstract

Introduction

Conclusions

References

Tables

Figures



Back

Close

Full Screen / Esc

Printer-friendly Version

Interactive Discussion



black) as well as the assimilated ones (on the ground, in blue). For the intermediate diameters ([0.7; 2.5] mm, corresponding to the range which mainly impacts the rain rate and the reflectivity factor at low rain rates), the assimilation underestimates the number of drops. This could be explained by the MRR observed spectra, at the top, which induce a significantly lower number of drops (Fig. 8, red dotted marked line). The origin of this variation of reflectivity with height for the MRR observations is not clear. It could be a calibration problem (height dependent transfer function TF, see METEK, 1998), as well as the effects of the horizontal wind or of some microphysical phenomena (coalescence/break-up). Anyway, the assimilation algorithm appears able to merge the different data available to produce a solution making a good compromise solution. It produces results embedding the spatio-temporal coherence brought by the propagation model.

We can also note that the very small drops (< 0.4 mm) are loosely constrained and that the corresponding results are then dubious (Fig. 8). The disdrometer does not cover these diameters and the MRR does not receive a lot of energy for the corresponding Doppler velocities, so that the MRR observed spectra seem less coherent. Consequently, the assimilation algorithm produces a very large number of small drops (more than an exponential law would) without any physical justification associated.

For large drops (> 2.5 mm), we note (Fig. 8) that the disdrometer provides observed ground DSD N_{DBS} which are not followed by the assimilation, probably because they are not consistent with the MRR observed spectra. However, large drops are very rare for this light rain event, so that the presence or absence of a particular drop can significantly affect the tail of the disdrometer DSD. Moreover, the terminal velocity of these drops is $> 7.3 \text{ m s}^{-1}$, so that disdrometer measurements with 2 min observation window correspond to very large probed volumes (corresponding to a height of around 850 m, crossed in 2 min for a 7.3 m s^{-1} drop) which absolutely do not match the MRR probed volumes (100 m height). Because large drops are rare for this event, we nevertheless chose to work with a 2 min observation window. Naturally, for convective events, this choice could be questioned, at least for the disdrometer (we have seen in Sect. 4.4.4

that a decrease of the observation window width for the Doppler spectra decreases the ability of this algorithm to handle the turbulence).

5.2 Wind

Figure 9up presents the 2 min vertical winds as retrieved by the algorithm from 19:30 to 20:30.

We remind that there are no Doppler spectra available for the two lowest gates (0–200 m), so that the wind retrievals for these 2 heights are loosely controlled by the algorithm, since the wind also acts on the vertical advection of drops and so on the disdrometer records.

The structure of the assimilated wind field is consistent with what we could expect for such an event. The correlation characteristic time and height are around 1 min and 300 m for the 10 s wind field (which can be used by the algorithm to handle the turbulence as explained in Sect. 4.4.4) and around 3 min and 500 m for the 2 min field. These results, as well as the wind range ($\pm 1.5 \text{ m s}^{-1}$) are consistent with the results of Kollias et al. (2002) or Giangrande et al. (2010), for instance. Even if we cannot validate the retrieved field using independent measurements in this study, we could nevertheless notice that our method produces the same wind field structures whatever the algorithm initialization.

We also have an overall mean wind of $+0.004 \text{ m s}^{-1}$, a slightly insignificant downward air motion. We get slight downward air motion in the upper layers of the atmosphere (mean wind around $+0.15 \text{ m s}^{-1}$ above 700 m) and slight upward air motion closer to the ground (around -0.2 m s^{-1} between 200 and 500 m). The 2 min standard deviation is quite constant with height and around 0.25 m s^{-1} .

5.3 DSD

We have seen (Sect. 5.1) that, in average, the MRR products (rain rate, reflectivity factor) are consistent with our assimilated data. There is nevertheless a vertical de-

Vertical variability of DSD

F. Mercier et al.

Title Page

Abstract

Introduction

Conclusions

References

Tables

Figures



Back

Close

Full Screen / Esc

Printer-friendly Version

Interactive Discussion



creasing tendency on MRR products, which cannot be reproduced by the algorithm, given that the propagation model produces vertically coherent fields (Fig. 4). However, in this section, we focus on the structure of the assimilated DSD fields, independently of the MRR products.

We have seen that the algorithm conserves well the reflectivity factor during a drop fall. It results in diagonal structures on the time-height plane (see Fig. 4, middle, right). The slope of a diagonal structure reflects the velocity fall. We can see that the reflectivity field is consistent with the characteristic velocity field (bottom, right): the lower the velocity, the lower the slope of the reflectivity diagonal structure.

Now we will also assess if these structures are retrieved for some important moments of the DSD. Figure 9 shows the mean volume diameter D_m , and the number of drops N_0 , resulting from the assimilated DSD \tilde{N} . We note that the retrieved values for D_m (0.5–1.5 mm) are reasonable for light stratiform rain (see Fig. A4 in Peters et al., 2005). D_m is also quite well conserved with height, but the patterns seem noisier than for the reflectivity. So does it for the rain rate field (Fig. 4). This is a consequence of the vertical wind, which modifies the vertical advection and so the DSD. The vertical wind has a greater impact, relatively, on small drops than on large ones (given their smaller terminal velocity). So the low order moments, mainly driven by the small drops, are more affected than the high order moments. This is particularly clear for N_0 . We have seen that the algorithm, underconstrained for these diameters, produces a very large number of very small drops (< 0.4 mm, i.e. with terminal velocities $< 1.5 \text{ ms}^{-1}$) (see Fig. 8). Consequently: (1) the vertical consistency of N_0 is low. (2) The slope of the diagonal patterns of the N_0 time-height field is low (because N_0 is driven by small drops, with low terminal velocities). (3) Patches of raindrops are formed by upward winds (see Fig. 9), and these patches disappear as soon as the wind in the lower layers turns downward. For instance, around 19:55, there is an upward wind between 100 and 400 m, which results in a patch of drops between 300 and 500 m. We can also note that even if the absolute values of N_0 are dubious, these patches are probably real, since they are driven by the wind.

Vertical variability of DSD

F. Mercier et al.

Title Page

Abstract

Introduction

Conclusions

References

Tables

Figures



Back

Close

Full Screen / Esc

Printer-friendly Version

Interactive Discussion



Vertical variability of DSD

F. Mercier et al.

Title Page	
Abstract	Introduction
Conclusions	References
Tables	Figures
◀	▶
◀	▶
Back	Close
Full Screen / Esc	
Printer-friendly Version	
Interactive Discussion	



Because the DSD for this event are globally exponential (see Fig. 8), it is reasonable to estimate a DSD slope (Fig. 9, bottom). And because this slope is calculated over the entire range of diameters, the retrieved slope field is vertically consistent (less significantly affected by the wind). We also note that the retrieved slopes are consistent with the results of Giangrande et al. (2010) (Fig. 8 in this paper) on a similar case study.

6 Conclusions

We have built a 4-D-VAR data assimilation algorithm for retrieving vertical DSD profiles and vertical wind under the bright band from observations coming from a micro rain radar (MRR) and a co-located disdrometer, and associated to a vertical propagation model. In this paper, we focused on the data assimilation algorithm (the algorithm finely handles measurements of various natures collected at different resolutions). We consequently chose to use a simple propagation model taking only into account gravity and vertical wind. Because of the limitations of the model, the retrieval algorithm is fit to study stratiform, light rain events.

The algorithm has been firstly applied to simulated data, in a twin experiment context. On simulated observations, despite the addition of instrumental noise and turbulence effects, we showed that it is able to retrieve DSD fields along with vertical wind patterns and intensities thanks to radar Doppler spectra and disdrometer drop fluxes. In particular, the algorithm appears able to handle the turbulence impact on Doppler spectra even if the turbulence is not explicitly implemented in the propagation model.

The good behavior of the algorithm is assessed on a light rain event during which co-localized MRR and optical disdrometer were used in the south of France during the HyMeX campaign. According to this work, the algorithm appears able to make the best of the two instrument data. In particular, we noticed (suspicious) vertical trends on the MRR products which cannot be reproduced by the propagation model due to its conservative nature. However, despite this trend the assimilation algorithm is able to produce a good compromise between the observations at different heights. The vertical

Vertical variability of DSD

F. Mercier et al.

Title Page

Abstract

Introduction

Conclusions

References

Tables

Figures



Back

Close

Full Screen / Esc

Printer-friendly Version

Interactive Discussion



retrieved wind field, although not independently validated, is spatially and temporally coherent and consistent with what can be expected for a rain event such as the one studied here. The DSD fields also appeared spatially coherent and self-consistent. By combining ground and radar data the presented algorithm is therefore able to retrieve the vertical wind field and to improve the DSD profile retrieval.

Independent information on the vertical wind and/or on the DSD are nevertheless necessary to estimate the performances of the algorithm. For this purpose, we could use wind profilers (see for instance Williams, 2012, which retrieves vertical wind in rain from 2 profilers). Another possibility would be to use the methods developed by Giangrande et al. (2010) or Tridon and Battaglia (2015), which retrieve vertical winds and DSD from K band and/or W band Doppler spectra. We could also study the impact on the quality of the retrievals of the addition of other frequencies directly in the assimilation process.

Some improvements are needed to provide an algorithm suitable for various weather situations (tropical rain and convective events, for instance). In our model, we discarded horizontal motions. This hypothesis is valid only if there is no significant horizontal wind or at least if the DSD is sufficiently homogeneous in the horizontal plane. It will be necessary to evaluate more precisely the impact of such an hypothesis. Another possibility would consist in taking into account the horizontal wind by extending the model with an additional spatial dimension. In our case, this can be done with the use of the YAO assimilation tool that provides a simple way to do it.

Other processes such as evaporation, coalescence/break-up have to be implemented in the propagation model. This enhanced model would allow to investigate the relative importance of the different physical phenomena (wind, evaporation, collisions, ...), and therefore to determine which are really essential for the assimilation algorithm. It would also help to better parameterize the algorithm through its ability to explain the observations.

Finally, the method is well suited for merging observations of different types each with its own temporal and spatial resolution. Indeed, when merging new observations,

only the observation operator has to be completed. For instance we could use more disdrometers located in the vicinity or the reflectivity at a different frequency from another radar. Any kind of sensors which observe geophysical parameters playing a rule during the fall of raindrops could be also easily introduced in the assimilation algorithm (ground wind, pressure, humidity).

Acknowledgements. This work was supported by the French Programme National de T ed etection Spatiale 759 (PNTS, <http://www.insu.cnrs.fr/pnts>), grant no. PNTS-2013-01, and by the IPSL (Institut Pierre-Simon Laplace). The authors wish to thank Jean-Marie Donier from the "Centre National de Recherches M eteorologiques – Groupe d' tude de l'Atmosph ere M eteorologique" (CNRM-GAME) for supplying us with the MRR data. We also thank the LO-CEAN team for providing us the YAO software.

References

- Arakawa, A. and Lamb, V. R.: Computational design of the basic dynamical processes of the UCLA general circulation model, *Methods in Computational Physics*, 17, 173–265, 1977. 12390
- Atlas, D., Srivastava, R., and Sekhon, R. S.: Doppler radar characteristics of precipitation at vertical incidence, *Rev. Geophys.*, 11, 1–35, 1973. 12388
- Barros, A. P., Prat, O. P., Shrestha, P., Testik, F. Y., and Bliven, L. F.: Revisiting low and list (1982): evaluation of raindrop collision parameterizations using laboratory observations and modeling, *J. Atmos. Sci.*, 65, 2983–2993, 2008. 12385
- Barthes, L. and Mallet, C.: Vertical evolution of raindrop size distribution: impact on the shape of the DSD, *Atmos. Res.*, 119, 13–22, 2013. 12390
- Beheng, K.: The evolution of raindrop spectra: a review of microphysical essentials, in: *Rainfall: State of the Science*, 29–48, 2010. 12390
- Bocquet, M.: Introduction aux principes et m ethodes de l'assimilation de donn ees en g eophysique, *Notes de cours de l'ENSTA*, 2005. 12393
- Bousquet, O., Berne, A., Delano e, J., Dufournet, Y., Gourley, J., Van-Baelen, J., Augros, C., Besson, L., Boudevillain, B., Caumont, O., Defer, E., Grazioli, J., Jorgensen, D. J., Kirstetter, P.-E., Ribaud, J.-F., Beck, J., Delrieu, G., Ducrocq, V., Scipion, D., Schwarzenboeck, A., and

Vertical variability of DSD

F. Mercier et al.

Title Page

Abstract

Introduction

Conclusions

References

Tables

Figures



Back

Close

Full Screen / Esc

Printer-friendly Version

Interactive Discussion



Vertical variability of DSD

F. Mercier et al.

Title Page

Abstract

Introduction

Conclusions

References

Tables

Figures



Back

Close

Full Screen / Esc

Printer-friendly Version

Interactive Discussion



Zwibel, J.: Multiple-frequency radar observations collected in southern France during the field phase of the hydrometeorological cycle in the Mediterranean experiment (Hymex), *B. Am. Meteorol. Soc.*, 96, 267–282, doi:10.1175/BAMS-D-13-00076.1, 2015. 12399

Brazier-Smith, P., Jennings, S., and Latham, J.: The interaction of falling water drops: coalescence, *P. R. Soc. A*, 326, 393–408, 1972. 12390

Bringi, V., Chandrasekar, V., Hubbert, J., Gorgucci, E., Randeu, W., and Schoenhuber, M.: Raindrop size distribution in different climatic regimes from disdrometer and dual-polarized radar analysis, *J. Atmos. Sci.*, 60, 354–365, 2003. 12386

Brown Jr, P. S.: Analysis and parameterization of the combined coalescence, breakup, and evaporation processes, *J. Atmos. Sci.*, 50, 2940–2951, 1993. 12385

Delahaye, J.-Y., Barthès, L., Golé, P., Lavergnat, J., and Vinson, J.-P.: A dual-beam spectropluviometer concept, *J. Hydrol.*, 328, 110–120, 2006. 12386, 12398

Giangrande, S. E., Luke, E. P., and Kollias, P.: Automated retrievals of precipitation parameters using non-Rayleigh scattering at 95 GHz, *J. Atmos. Ocean. Tech.*, 27, 1490–1503, 2010. 12395, 12402, 12411, 12413, 12414

Giangrande, S. E., Luke, E. P., and Kollias, P.: Characterization of vertical velocity and drop size distribution parameters in widespread precipitation at ARM facilities, *J. Appl. Meteorol. Clim.*, 51, 380–391, 2012. 12389

Gilbert, J. C. and Lemaréchal, C.: The Module M1QN3, INRIA Rocquencourt & Rhone-Alpes, available at: <https://who.rocq.inria.fr/Jean-Charles.Gilbert/preprint/u01-m1qn3.pdf>, 2006. 12397

Gunn, R. and Kinzer, G. D.: The terminal velocity of fall for water droplets in stagnant air, *J. Meteorol.*, 6, 243–248, 1949. 12388

Hu, Z.: The role of raindrop coalescence and breakup in rainfall modeling, *Atmos. Res.*, 37, 343–359, 1995. 12385

Hu, Z. and Srivastava, R.: Evolution of raindrop size distribution by coalescence, breakup, and evaporation: theory and observations, *J. Atmos. Sci.*, 52, 1761–1783, 1995. 12386, 12388

Joss, J. and Waldvogel, A.: Ein Spektrograph für Niederschlagstropfen mit automatischer Auswertung, *Pure Appl. Geophys.*, 68, 240–246, 1967. 12386

Kalnay, E.: Atmospheric Modeling, Data Assimilation, and Predictability, Cambridge University Press, Cambridge, UK, 341 pp., 2003. 12393

Kollias, P., Albrecht, B., and Marks Jr, F.: Raindrop Sorting Induced by Vertical Drafts, *Geophys. Res. Lett.*, 28, 2787–2790, 2001. 12385

Vertical variability of DSD

F. Mercier et al.

Title Page

Abstract

Introduction

Conclusions

References

Tables

Figures



Back

Close

Full Screen / Esc

Printer-friendly Version

Interactive Discussion



- Kollias, P., Albrecht, B., and Marks Jr, F.: Why Mie? Accurate observations of vertical air velocities and raindrops using a cloud radar, *B. Am. Meteorol. Soc.*, 83, 1471–1483, 2002. 12386, 12395, 12411
- Kruger, A. and Krajewski, W. F.: Two-dimensional video disdrometer: a description, *J. Atmos. Ocean. Tech.*, 19, 602–617, 2002. 12386
- Lhermitte, R. M.: Observation of rain at vertical incidence with a 94 GHz Doppler radar: an insight on Mie scattering, *Geophys. Res. Lett.*, 15, 1125–1128, 1988. 12389
- List, R.: A linear radar reflectivity-rainrate relationship for steady tropical rain, *J. Atmos. Sci.*, 45, 3564–3572, 1988. 12385
- List, R. and McFarquhar, G. M.: The role of breakup and coalescence in the three-peak equilibrium distribution of raindrops, *J. Atmos. Sci.*, 47, 2274–2292, 1990. 12385
- List, R., Donaldson, N., and Stewart, R.: Temporal evolution of drop spectra to collisional equilibrium in steady and pulsating rain, *J. Atmos. Sci.*, 44, 362–372, 1987. 12390
- Low, T. B., and List, R.: Collision, coalescence and breakup of raindrops. Part I: Experimentally established coalescence efficiencies and fragment size distributions in breakup, *J. Atmos. Sci.*, 39, 1591–1606, doi:10.1175/1520-0469(1982)039%3C1591:CCABOR%3E2.0.CO%3B2, 1982a. 12390
- Low, T. B., and List, R.: Collision, coalescence and breakup of raindrops. Part II: Parameterization of fragment size distributions, *J. Atmos. Sci.*, 39, 1607–1619, 1982b. 12390
- Marshall, J. S. and Palmer, W. M. K.: The distribution of raindrops with size, *J. Meteorol.*, 5, 165–166, 1948. 12401
- Mcfarquhar, G. M.: Raindrop size distribution and evolution, in: *Rainfall: State of the Science*, edited by: Testik, F. Y., and Gebremichael, M., American Geophysical Union, 49–60, available at: <http://onlinelibrary.wiley.com/doi/10.1029/2010GM000971/summary> (last access: 12 November 2015), 2010. 12385, 12389
- METEK: MMR, Physical Basis, Available from METEK GmbH, Fritz-Straßmann-Straße 4, D-25337 Elmshorn, Germany, 1998. 12398, 12410
- Molinié, G., Ceresetti, D., Anquetin, S., Creutin, J. D., and Boudévillain, B.: Rainfall regime of a mountainous Mediterranean Region: Statistical analysis at short time steps, *J. Appl. Meteorol. Clim.*, 51, 429–448, 2012. 12399
- Nardi, L., Sorrow, C., Badran, F., and Thiria, S.: YAO: a software for variational data assimilation using numerical models, in: *Computational Science and Its Applications – ICCSA 2009*,

Vertical variability of DSD

F. Mercier et al.

Title Page

Abstract

Introduction

Conclusions

References

Tables

Figures



Back

Close

Full Screen / Esc

Printer-friendly Version

Interactive Discussion



Springer, Berlin Heidelberg, Germany, 621–636, doi:10.1007/978-3-642-02457-3_53, 2009. 12397

Peters, G., Fischer, B., Münster, H., Clemens, M., and Wagner, A.: Profiles of raindrop size distributions as retrieved by microrain radars, *J. Appl. Meteorol.*, 44, 1930–1949, 2005. 12386, 12395, 12398, 12403, 12412

Prat, O. P. and Barros, A. P.: Exploring the use of a column model for the characterization of microphysical processes in warm rain: results from a homogeneous rainshaft model, *Adv. Geosci.*, 10, 145–152, doi:10.5194/adgeo-10-145-2007, 2007a. 12385, 12390

Prat, O. P. and Barros, A. P.: A robust numerical solution of the stochastic collection-breakup equation for warm rain, *J. Appl. Meteorol. Clim.*, 46, 1480–1497, 2007b. 12385

Prat, O. P., Barros, A. P., and Testik, F. Y.: On the influence of raindrop collision outcomes on equilibrium drop size distributions, *J. Atmos. Sci.*, 69, 1534–1546, 2012. 12389

Schleiss, M. and Smith, J.: A method to estimate the 3D+ time structure of the raindrop size distribution using radar and disdrometer data, *J. Hydrometeorol.*, 16, 1222–1242, 2015. 12386

Schlottke, J., Straub, W., Beheng, K. D., Gomaa, H., and Weigand, B.: Numerical investigation of collision-induced breakup of raindrops. Part I: Methodology and dependencies on collision energy and eccentricity, *J. Atmos. Sci.*, 67, 557–575, 2010. 12390

Seifert, A.: On the parameterization of evaporation of raindrops as simulated by a one-dimensional rainshaft model, *J. Atmos. Sci.*, 65, 3608–3619, 2008. 12389

Smolarkiewicz, P. K.: A simple positive definite advection scheme with small implicit diffusion, *Mon. Weather Rev.*, 111, 479–486, 1983. 12390

Straub, W., Beheng, K. D., Seifert, A., Schlottke, J., and Weigand, B.: Numerical investigation of collision-induced breakup of raindrops. Part II: Parameterizations of coalescence efficiencies and fragment size distributions, *J. Atmos. Sci.*, 67, 576–588, 2010. 12390

Thiria, S., Badran, F., and Sorrow, C.: YAO: Un logiciel pour les modèles numériques et l'assimilation de données, Rapport technique, LOCEAN, Paris, France, 2006. 12397

Tokay, A., Hartmann, P., Battaglia, A., Gage, K. S., Clark, W. L., and Williams, C. R.: A field study of reflectivity and ZR relations using vertically pointing radars and disdrometers, *J. Atmos. Ocean. Tech.*, 26, 1120–1134, 2009. 12386

Tridon, F. and Battaglia, A.: Dual-frequency radar Doppler spectral retrieval of rain drop size distributions and entangled dynamics variables, *J. Geophys. Res.-Atmos.*, 120, 5585–5601, 2015. 12414

- Tridon, F., Battaglia, A., and Kollias, P.: Disentangling Mie and attenuation effects in rain using a Ka-W dual-wavelength Doppler spectral ratio technique, *Geophys. Res. Lett.*, 40, 5548–5552, 2013. 12389, 12402, 12403
- 5 Ulaby, F. T., Moore, R. K., and Fung, A. K.: *Microwave Remote Sensing Active and Passive – Volume II: Radar Remote Sensing and Surface Scattering and Emission Theory*, Addison-Wesley, Reading, UK, 1982. 12395
- VanZanten, M., Stevens, B., Vali, G., and Lenschow, D.: Observations of drizzle in nocturnal marine stratocumulus, *J. Atmos. Sci.*, 62, 88–106, 2005. 12385
- 10 Villermaux, E. and Bossa, B.: Single-drop fragmentation determines size distribution of raindrops, *Nat. Phys.*, 5, 697–702, 2009. 12390
- Villermaux, E. and Eloi, F.: The distribution of raindrops speeds, *Geophys. Res. Lett.*, 38, L19805, doi:10.1029/2011GL048863, 2011. 12390
- Williams, C. R.: Vertical air motion retrieved from dual-frequency profiler observations, *J. Atmos. Ocean. Tech.*, 29, 1471–1480, 2012. 12414

**Vertical variability of
DSD**F. Mercier et al.

[Title Page](#)[Abstract](#)[Introduction](#)[Conclusions](#)[References](#)[Tables](#)[Figures](#)[Back](#)[Close](#)[Full Screen / Esc](#)[Printer-friendly Version](#)[Interactive Discussion](#)

Vertical variability of
DSD

F. Mercier et al.

Table 2. For the twin experiment: MAE (Eq. 20) between true and assimilated fields for different parameters: vertical wind; rain rate, RR; reflectivity factor, Z_e ; mean volume diameter, D_m ; liquid water content, LWC; number of drops, N_0 . The indicators are presented for 2 observation windows (10s, in italics, and 2min) and for different temporal field resolutions (from 10s to 8min). The absolute bias is also presented, as well as the absolute values of the means of the true fields. In each case, the best result (lowest MAE) has been bolded if it happened in the case of 2min observations window.

Field resolution	obs. window	wind (ms^{-1})	RR (mm h^{-1})	Z_e (dBZ)	D_m (μm)	LWC ($\mu\text{g m}^{-3}$)	N_0 (m^{-3})
10s	10s	<i>0.21</i>	<i>0.27</i>	<i>0.96</i>	<i>28.5</i>	<i>14.5</i>	<i>337</i>
	2min	0.46	0.51	1.05	43.0	19.2	257
30s	10s	<i>0.17</i>	<i>0.24</i>	<i>0.94</i>	<i>27.4</i>	<i>14.2</i>	<i>334</i>
	2min	0.40	0.34	0.92	33.4	14.8	251
1min	10s	<i>0.17</i>	<i>0.24</i>	<i>0.91</i>	<i>26.4</i>	<i>13.8</i>	<i>330</i>
	2min	0.29	0.17	0.83	26.2	10.7	246
2min	10s	<i>0.16</i>	<i>0.23</i>	<i>0.87</i>	<i>25.0</i>	<i>13.5</i>	<i>323</i>
	2min	0.14	0.14	0.80	24.7	10.0	241
4min	10s	<i>0.15</i>	<i>0.22</i>	<i>0.81</i>	<i>23.3</i>	<i>13.1</i>	<i>311</i>
	2min	0.12	0.13	0.77	23.5	9.54	234
8min	10s	<i>0.14</i>	<i>0.22</i>	<i>0.74</i>	<i>21.8</i>	<i>12.8</i>	<i>296</i>
	2min	0.098	0.12	0.72	22.4	9.13	225
abs. bias	10s	<i>0.10</i>	<i>0.20</i>	<i>0.69</i>	<i>22.6</i>	<i>13.0</i>	<i>305</i>
	2min	0.054	0.087	0.71	22.7	8.67	212
true absolute mean		0.34	2.18	27.6	1120	142	1070

Title Page

Abstract

Introduction

Conclusions

References

Tables

Figures

◀

▶

◀

▶

Back

Close

Full Screen / Esc

Printer-friendly Version

Interactive Discussion



Vertical variability of
DSD

F. Mercier et al.

Table 3. For the real case study: comparison between observations and assimilation for 3 moments of the MRR Doppler spectra: order 0 (reflectivity η); order 1 (characteristic velocity W_c); order 2 (spectral width SW). For η , MAE (Eq. 20) and bias are presented. For W_c and SW, MAPE (Eq. 18), rbias (Eq. 19) and mean value of the observed field are presented. The results are shown for every heights, as well as for 3 different height ranges. Positive bias mean over-estimation by the assimilation compared to the observations. Comparisons between observed and assimilated DBS measurements are also presented.

		every gates	top (1100–1400 m)	middle (700–1000 m)	bottom (200–500 m)
η	MAE (dB)	1.2	1.8	0.86	1.1
	bias (dB)	-0.017	+0.60	-0.12	-0.40
W	MAPE (%)	4.4	5.7	3.5	4.4
	rbias (%)	-0.39	-1.5	+0.16	-0.15
	mean(obs) (ms^{-1})	5.11	5.28	5.18	4.87
SW	MAPE (%)	14	14	12	17
	rbias (%)	+5.9	+3.1	+3.5	+12
	mean(obs) (ms^{-1})	1.20	1.25	1.22	1.11
DBS	MAE (number of drops: mm^{-1})	102			
	mean(obs) (number of drops: mm^{-1})	1080			

Title Page

Abstract

Introduction

Conclusions

References

Tables

Figures

I ◀

▶ I

◀

▶

Back

Close

Full Screen / Esc

Printer-friendly Version

Interactive Discussion



Vertical variability of DSD

F. Mercier et al.

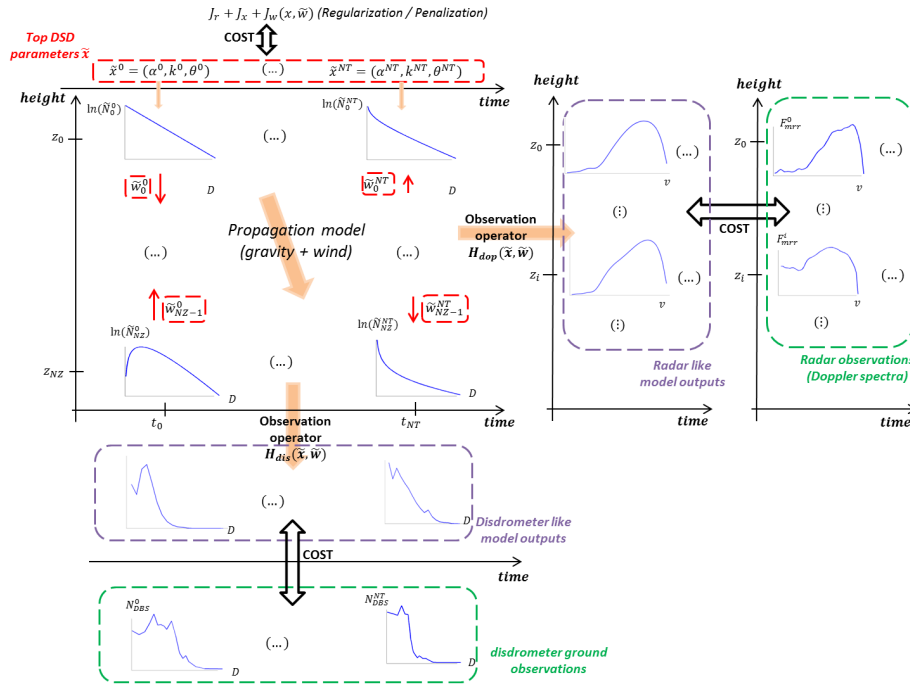


Figure 1. Diagram of the assimilation algorithm. The unknowns of the problem (top DSD parameters and vertical winds) are circled in red. The top DSD parameters are converted into bin DSD and propagated through space and time, under gravity and vertical wind, by the propagation model. Radar and disdrometer observations (circled in green) are available at different places and times. Observation operators are used to convert the model DSD into observations like data (circled in purple). Then, the gap between these data and the observations is the value of the observation term of the cost function. Regularization and penalization terms are added in the cost function. Then, we use a numerical minimizer to estimate a set of unknowns which minimize the cost function. The notations are the ones defined in Sect. 2.



Vertical variability of
DSD

F. Mercier et al.



Figure 2. Location of the studied area in the south-east of France, on a topographic map. The two instruments used in the assimilation algorithm (MRR and DBS, see Sect. 3.1 and 3.2) are located at Le Pradel, 278m height. The 3 automatic Météo France weather stations of Le Pradel (same place), Aubenas (7.5km westward, 180m height) and Berzème (7.5km on the north-east, 650m height) are also shown.

Title Page

Abstract

Introduction

Conclusions

References

Tables

Figures

◀

▶

◀

▶

Back

Close

Full Screen / Esc

Printer-friendly Version

Interactive Discussion



**Vertical variability of
DSD**

F. Mercier et al.

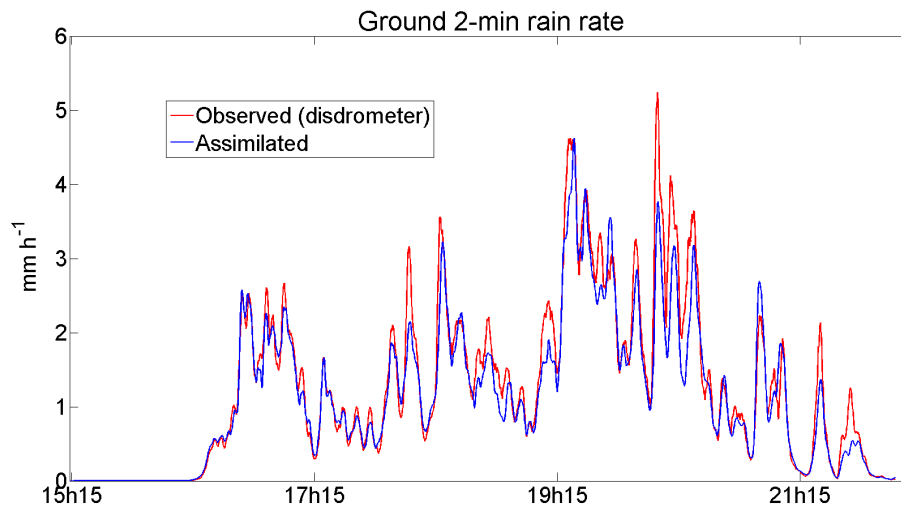


Figure 3. For the real case study of the 12 October 2013, 2 min rain rates as measured by the DBS (red) and as reproduced by the 4-D-VAR assimilation algorithm (blue).

[Title Page](#)[Abstract](#)[Introduction](#)[Conclusions](#)[References](#)[Tables](#)[Figures](#)[◀](#)[▶](#)[◀](#)[▶](#)[Back](#)[Close](#)[Full Screen / Esc](#)[Printer-friendly Version](#)[Interactive Discussion](#)

Vertical variability of
DSD

F. Mercier et al.

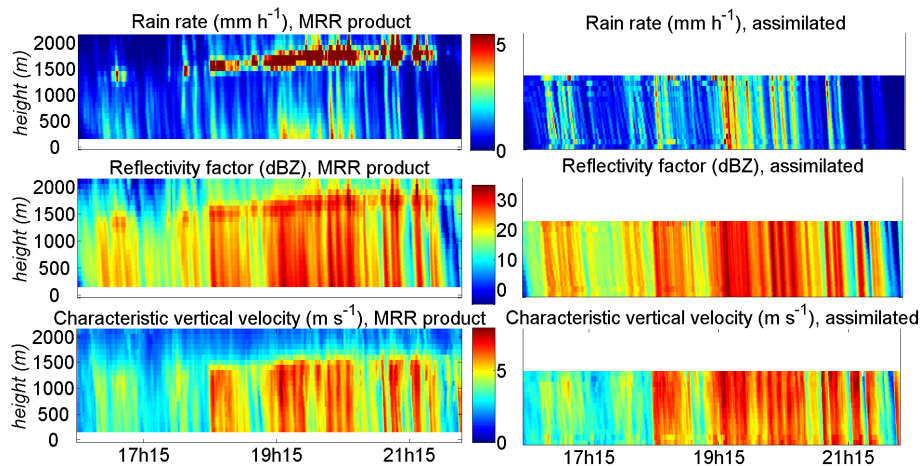


Figure 4. For the real case study: rain rate (up), reflectivity factor (middle) and characteristic velocity (bottom) for MRR products (left) and assimilated fields (right).

[Title Page](#)[Abstract](#)[Introduction](#)[Conclusions](#)[References](#)[Tables](#)[Figures](#)[◀](#)[▶](#)[◀](#)[▶](#)[Back](#)[Close](#)[Full Screen / Esc](#)[Printer-friendly Version](#)[Interactive Discussion](#)

Vertical variability of DSD

F. Mercier et al.

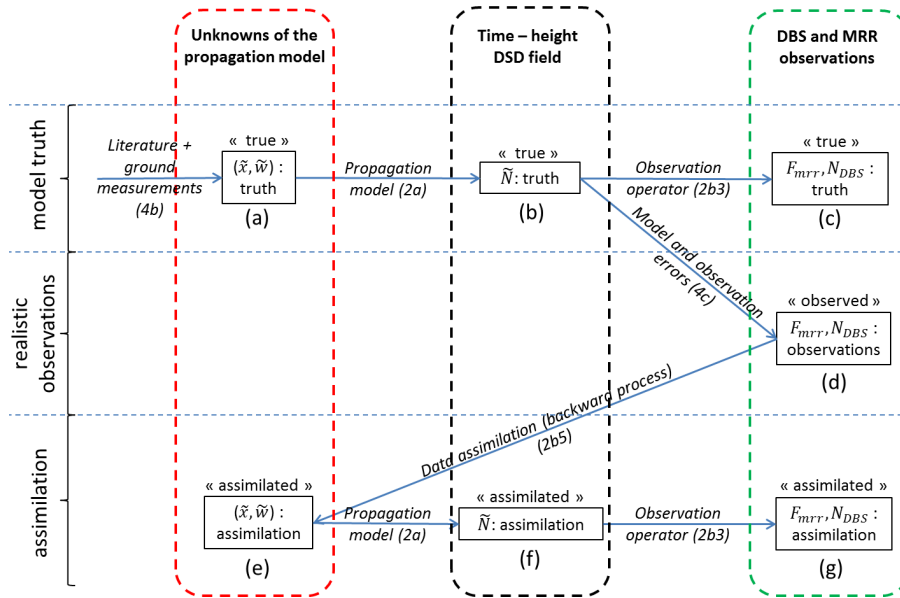


Figure 5. Diagram summarizing the twin experiment process (encompassing the observation simulation). See Sect. 4.1 for the description of the scheme. The sections of the paper in which the different simulation processes are detailed are indicated in brackets below the arrows.

Title Page	
Abstract	Introduction
Conclusions	References
Tables	Figures
◀	▶
◀	▶
Back	Close
Full Screen / Esc	
Printer-friendly Version	
Interactive Discussion	



Vertical variability of
DSD

F. Mercier et al.

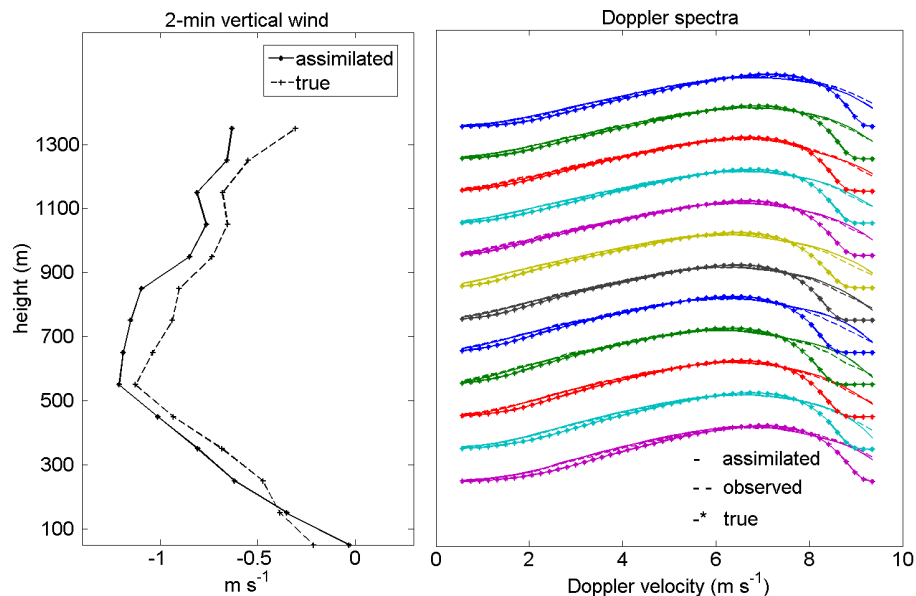


Figure 6. For the twin experiment: vertical wind and Doppler spectra vertical profiles for a given time. (left): vertical wind (positive downward) according to the height. Dashed line is the true wind; solid line is the assimilated wind. (right): Doppler spectra for the successive radar gates from gate 4 (bottom) up to gate 15 (up). Marked lines are the true spectra, dashed lines the observed spectra (with turbulence and instrumental noise) and solid lines the assimilated spectra.

[Title Page](#)[Abstract](#)[Introduction](#)[Conclusions](#)[References](#)[Tables](#)[Figures](#)[◀](#)[▶](#)[◀](#)[▶](#)[Back](#)[Close](#)[Full Screen / Esc](#)[Printer-friendly Version](#)[Interactive Discussion](#)

Vertical variability of DSD

F. Mercier et al.

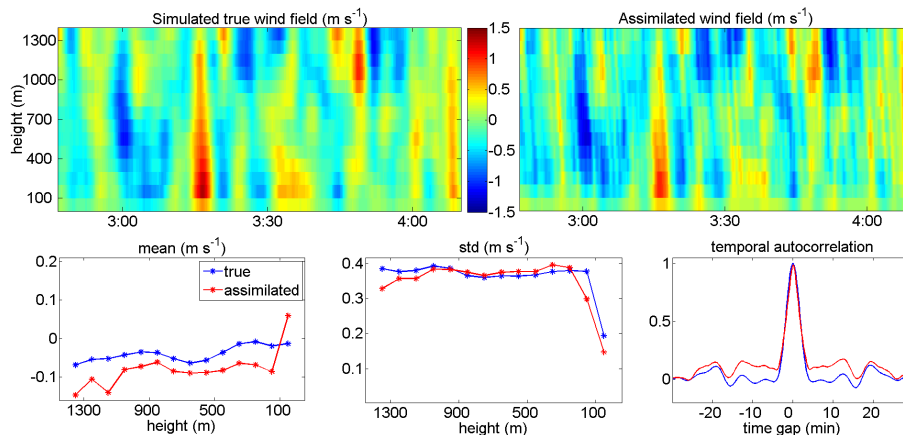


Figure 7. For the twin experiment: ability of the assimilation algorithm to retrieve the wind field characteristics. (up, left): true wind field; (up, right): assimilated wind field; (bottom, left): mean values of these two fields according to the height: blue: truth; red: assimilation; (bottom, middle): the same for the standard deviation; (bottom, right): temporal normalized autocorrelation function of the two wind fields. The wind is positive downward.

Title Page

Abstract

Introduction

Conclusions

References

Tables

Figures



Back

Close

Full Screen / Esc

Printer-friendly Version

Interactive Discussion



Vertical variability of
DSD

F. Mercier et al.

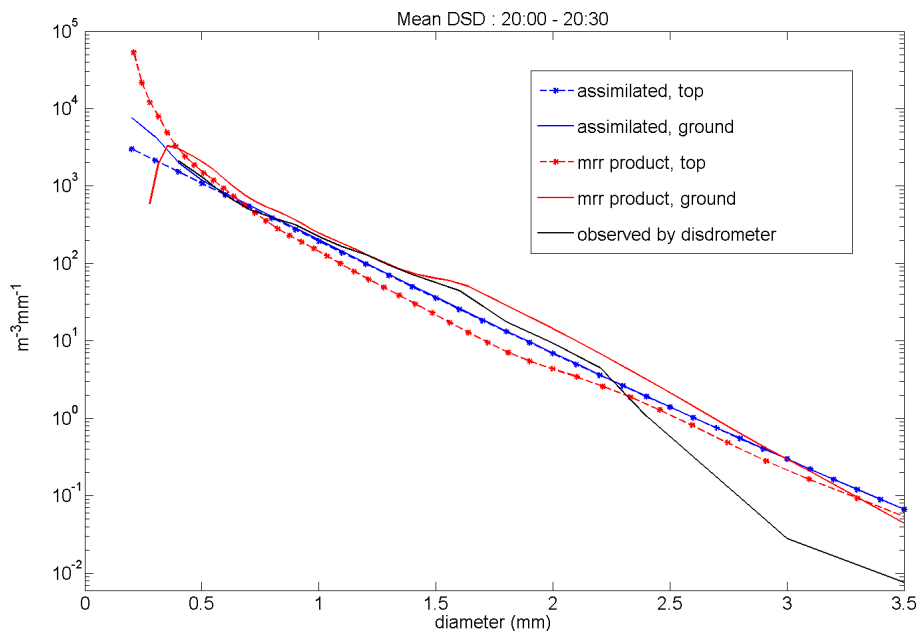


Figure 8. For the real case study: mean DSD between 20:00 and 20:30 evaluated on the ground (continuous lines) from: disdrometer data (black) and assimilation outputs (blue) and from MRR on the lowest radar gate available (the 3rd one) (continuous, red). The same, evaluated on the top (dotted marked lines) from MRR data (red) and assimilation outputs (blue).

[Title Page](#)[Abstract](#)[Introduction](#)[Conclusions](#)[References](#)[Tables](#)[Figures](#)[◀](#)[▶](#)[◀](#)[▶](#)[Back](#)[Close](#)[Full Screen / Esc](#)[Printer-friendly Version](#)[Interactive Discussion](#)

Vertical variability of DSD

F. Mercier et al.

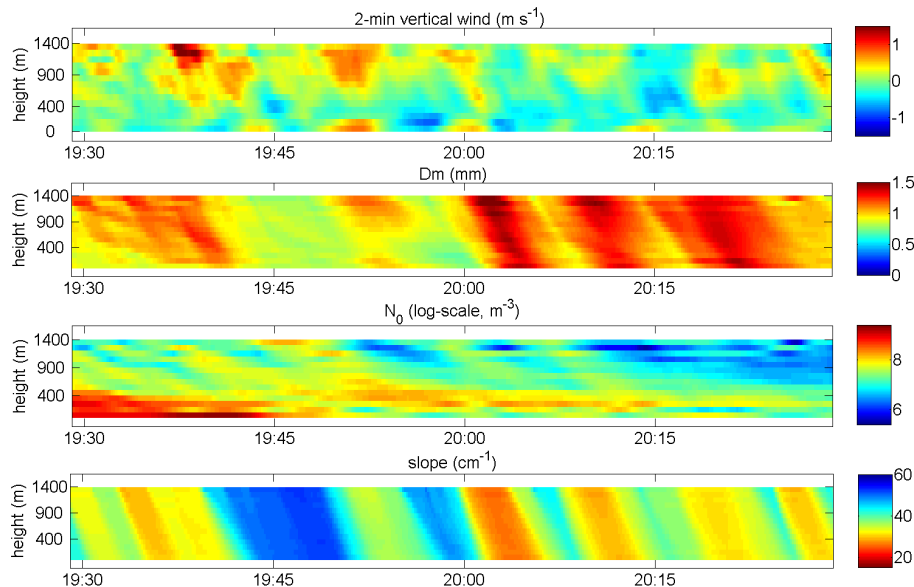


Figure 9. For the real case study: time-height fields of different assimilated parameters induced by DSD field \tilde{N} or wind \tilde{w} . Top: 2 min vertical wind field (positive downward). Middle high: mean volume diameter D_m . Middle low: number of drops N_0 (moment of order 0 of the DSD). Bottom: slope of the DSD, evaluated as the slope of the linear regression of the logarithm of the DSD on the diameters.

