

This discussion paper is/has been under review for the journal Atmospheric Measurement Techniques (AMT). Please refer to the corresponding final paper in AMT if available.

Orbiting Carbon Observatory-2 (OCO-2) cloud screening algorithms; validation against collocated MODIS and CALIOP data

T. E. Taylor¹, C. W. O'Dell¹, C. Frankenberg^{2,3}, P. Partain¹, H. Q. Cronk¹, A. Savtchenko⁴, R. R. Nelson⁵, E. J. Rosenthal⁵, A. Y. Chang³, B. Fisher³, G. Osterman³, R. H. Pollock³, D. Crisp³, A. Eldering³, and M. R. Gunson³

¹Cooperative Institute for Research in the Atmosphere, Fort Collins, CO, USA

²California Institute of Technology, Division of Geology and Planetary Sciences, Pasadena, USA

³Jet Propulsion Laboratory, California Institute of Technology, Pasadena, CA, USA

⁴ADNET, NASA Goddard Space Flight Center, Greenbelt, Maryland, USA

⁵Department of Atmospheric Science, Colorado State Univ., Fort Collins, CO, USA

Received: 22 October 2015 – Accepted: 5 November 2015 – Published: 4 December 2015

Correspondence to: T. E. Taylor (tommy.taylor@colostate.edu)

Published by Copernicus Publications on behalf of the European Geosciences Union.

Title Page

Abstract

Introduction

Conclusions

References

Tables

Figures

◀

▶

◀

▶

Back

Close

Full Screen / Esc

Printer-friendly Version

Interactive Discussion



Abstract

The objective of the National Aeronautics and Space Administration's (NASA) Orbiting Carbon Observatory-2 (OCO-2) mission is to retrieve the column-averaged carbon dioxide (CO_2) dry air mole fraction (X_{CO_2}) from satellite measurements of reflected sunlight in the near-infrared. These estimates can be biased by clouds and aerosols within the instrument's field of view (FOV). Screening of the most contaminated soundings minimizes unnecessary calls to the computationally expensive Level 2 (L2) X_{CO_2} retrieval algorithm. Hence, robust cloud screening methods have been an important focus of the OCO-2 algorithm development team. Two distinct, computationally inexpensive cloud screening algorithms have been developed for this application. The A-Band Preprocessor (ABP) retrieves the surface pressure using measurements in the $0.76 \mu\text{m}$ O₂ A-band, neglecting scattering by clouds and aerosols, which introduce photon path-length (PPL) differences that can cause large deviations between the expected and retrieved surface pressure. The Iterative Maximum A-Posteriori (IMAP) Differential Optical Absorption Spectroscopy (DOAS) Preprocessor (IDP) retrieves independent estimates of the CO_2 and H_2O column abundances using observations taken at $1.61 \mu\text{m}$ (weak CO_2 band) and $2.06 \mu\text{m}$ (strong CO_2 band), while neglecting atmospheric scattering. The CO_2 and H_2O column abundances retrieved in these two spectral regions differ significantly in the presence of cloud and scattering aerosols. The combination of these two algorithms, which key off of different features in the spectra, provides the basis for cloud screening of the OCO-2 data set.

To validate the OCO-2 cloud screening approach, collocated measurements from NASA's Moderate Resolution Imaging Spectrometer (MODIS), aboard the Aqua platform, were compared to results from the two OCO-2 cloud screening algorithms. With tuning to allow throughputs of $\approx 30\%$, agreement between the OCO-2 and MODIS cloud screening methods is found to be $\approx 85\%$ over four 16-day orbit repeat cycles in both the winter (December) and spring (April–May) for OCO-2 nadir-land, glint-land and glint-water observations.

OCO-2 cloud screening validation

T. E. Taylor et al.

Title Page

Abstract

Introduction

Conclusions

References

Tables

Figures



Back

Close

Full Screen / Esc

Printer-friendly Version

Interactive Discussion



OCO-2 cloud screening validation

T. E. Taylor et al.

Title Page

Abstract

Introduction

Conclusions

References

Tables

Figures



Back

Close

Full Screen / Esc

Printer-friendly Version

Interactive Discussion



No major, systematic, spatial or temporal dependencies were found, although slight differences in the seasonal data sets do exist and validation is more problematic with increasing solar zenith angle and when surfaces are covered in snow and ice and have complex topography. To further analyze the performance of the cloud screening algorithms, an initial comparison of OCO-2 observations was made to collocated measurements from the Cloud-Aerosol Lidar with Orthogonal Polarization (CALIOP) aboard the Cloud-Aerosol Lidar and Infrared Pathfinder Satellite Observations (CALIPSO). These comparisons highlight the strength of the OCO-2 cloud screening algorithms in identifying high, thin clouds but suggest some difficulty in identifying some clouds near the surface, even when the optical thicknesses are greater than 1.

1 Introduction

NASA's OCO-2 satellite was launched on 2 July, 2014 into a sun-synchronous orbit. After an initial on-orbit satellite bus checkout period, it was inserted into the 705 km Afternoon Constellation, known as the A-Train (L'Ecuyer and Jiang, 2010). From that orbit, it will collect measurements of reflected solar radiation in tandem with the other A-Train sensors such as MODIS-Aqua, CloudSat and CALIOP (Xiong et al., 2009; Stephens et al., 2002; Winker et al., 2010). The OCO-2 instrument, described in detail in Crisp et al. (2008), contains three co-bore-sighted imaging spectrometers, fed by a common telescope. The light is dispersed via gratings to form two dimensional images of spectra onto a 1024 pixel \times 1024 pixel focal plane array. The three spectral bands, centered at 0.76 μm (O_2 A-band), 1.61 μm (weak CO_2 band) and 2.06 μm (strong CO_2 band), with resolving powers of 18 000, 21 000 and 21 000, respectively, were chosen to provide high precision retrievals of X_{CO_2} .

The orientation of the satellite bus rotates with latitude to align the optical elements at a constant orientation relative to the principle scattering plane defined by the earth-sun-satellite geometry. With an integration time of 0.33 s, each OCO-2 frame is approximately 2.3 km along-track. The cross-track width of the swath varies from \approx 0.1 km,

**OCO-2 cloud
screening validation**

T. E. Taylor et al.

Title Page

Abstract

Introduction

Conclusions

References

Tables

Figures



Back

Close

Full Screen / Esc

Printer-friendly Version

Interactive Discussion



when the spectrometer slits are oriented along the orbit track, to 10.6 km at nadir, when the spectrometer slits are oriented perpendicular to the ground track. Cross-track frames are subdivided into eight equal footprints, each being approximately 1.3 km wide at nadir.

For scenes containing significant amounts of cloud or aerosol, the OCO-2 L2 X_{CO_2} retrieval algorithm fails to converge, thus wasting valuable processing time. More importantly, contamination at even modestly low optical thicknesses ($\lesssim 0.3$) can introduce scene-dependent biases in the X_{CO_2} (Butz et al., 2011; O'Dell et al., 2012; Guerlet et al., 2013), hindering the ability to accurately determine the sources and sinks on regional scales – the primary objective of OCO-2. It is therefore necessary to provide reliable cloud screening on all of the approximately one million OCO-2 measurements collected each day.

The OCO-2 sampling approach was designed to mitigate the chances of introducing systematic biases in the retrieved X_{CO_2} values (Bösch et al., 2006, 2011; Crisp et al., 2008). Two primary mitigation strategies related to cloud screening are the satellite's multiple observation modes and the small native footprint size of the instrument's FOV.

As discussed in Miller et al. (2007), nadir viewing observations, with the instrument bore sighted directly beneath the satellite orbit track, minimizes the FOV of individual footprints. However, nadir viewing yields low signal to noise ratios (SNR) over water surfaces, which are very dark in the CO_2 channels, making accurate X_{CO_2} retrievals nearly impossible over much of the globe. Observations in glint viewing mode, with the bore sight oriented towards the point of specular reflection, maximizes the SNR, but yields larger footprint sizes and longer atmospheric optical paths. This increases the likelihood of cloud contamination within the FOV.

The operational viewing strategy of OCO-2 in the early phase of the mission (September 2014 through June 2015) alternated between nadir-only and glint-only observations on successive 16-day ground track repeat cycles. However, on 2 July 2015 (the one year launch anniversary), the nominal sequence was modified to alternate between nadir and glint observations on successive orbits.

OCO-2 cloud screening validation

T. E. Taylor et al.

Title Page

Abstract

Introduction

Conclusions

References

Tables

Figures



Back

Close

Full Screen / Esc

Printer-friendly Version

Interactive Discussion



The OCO-2 spacecraft can also point the instrument boresight at a stationary surface location in the target observation mode, acquiring thousands of observations as it flies overhead. Target sites include validation targets, such as the Total Carbon Column Observing Network (TCCON) stations, which return precise X_{CO_2} estimates using direct observations of the solar disk that can be compared to the OCO-2 X_{CO_2} estimates to identify biases (Wunch et al., 2010, 2011). Anywhere from zero to three orbits each day are designated as a target orbit, with acquisition made only if the skies are predicted to be relatively clear and the local target solar zenith angle (SZA) is less than approximately 55° . However, these target data have not been used in this validation study of the global nadir and glint mode data (Wunch et al., 2015).

Prior to the launch of OCO-2, the algorithm development team had the benefit of working with the Japanese Greenhouse gas Observation Satellite (GOSAT) data set (Kuze et al., 2009; Yoshida et al., 2011). Analysis of the ABP cloud screening algorithm performance, similar to that presented here, was published in Taylor et al. (2012). That study concluded that the ABP, alone, yielded agreement with the MODIS cloud screening around 80 % (90 %) of the time over land (ocean) surfaces. The IDP algorithm was not available at that time.

This study presents the first comparisons between OCO-2, MODIS-Aqua and CALIOP cloud screening results for a series of measurements collected during the first year of OCO-2 operations. Because these sensors are all in the A-Train, this comparison yields far more collocated samples than the GOSAT comparison reported in (Taylor et al., 2012). The collocation data set for the MODIS comparison is comprised of four 16-day repeat cycles, two in nadir and two in glint viewing, over both a winter (December) and spring (April–May) time range (approximately 50 million soundings in total). For CALIOP, the comparison is performed on the May nadir-land observations. This provides a statistically robust global analysis of the OCO-2 cloud screening performance.

The work presented here is organized as follows; In Sect. 2, the two OCO-2 cloud screening algorithms are described and their performance on simulated data is sum-

OCO-2 cloud screening validation

T. E. Taylor et al.

Title Page

Abstract

Introduction

Conclusions

References

Tables

Figures



Back

Close

Full Screen / Esc

Printer-friendly Version

Interactive Discussion



marized. Section 3 briefly discusses the OCO-2 B7 data used in this study and introduces the collocated MODIS and CALIOP products. Section 4 provides detailed analysis of the cloud screening validation procedure, including optimization of algorithm tuning and the direct comparison against both MODIS and CALIOP. Finally, summary conclusions are given in Sect. 5.

2 OCO-2 Aerosol and Cloud Screening Algorithms

The OCO-2 A-Band Preprocessor (ABP) and the Iterative Maximum A-Posteriori Differential Optical Absorption Spectroscopy Preprocessor (IDP) algorithms are applied to the full OCO-2 data set as part of the operational data processing system. Since OCO-2 collect almost one million soundings per day, both algorithms are made computationally efficient by neglecting atmospheric scattering by clouds and aerosols in the radiative transfer forward model. ABP does account for Rayleigh scattering by air molecules, which is non-negligible in the O₂ A-band, while IDP neglects all sources of scattering. By assuming clear-sky conditions, deviations of retrieved variables from expected values allow for the identification of scenes contaminated by cloud and aerosol. Brief descriptions of both algorithms are given below. In addition, we provide a detailed discussion of the merits of combining the two into a single cloud and aerosol filter and directly compare the performance on a set of simulated radiances.

2.1 The A-Band Preprocessor (ABP)

The ABP algorithm employs Bayesian optimal estimation (Rodgers, 2000) to retrieve surface pressure and surface albedo from high resolution spectra in the 0.76 μm O₂ A-band, which contain a signature due to the absorption of reflected sunlight by oxygen molecules. Using some prior knowledge of the expected values, the retrieved parameters can be interpreted to provide information on cloud and aerosol contamination within the FOV of the satellite sensor.

OCO-2 cloud screening validation

T. E. Taylor et al.

Title Page

Abstract

Introduction

Conclusions

References

Tables

Figures

◀

▶

◀

▶

Back

Close

Full Screen / Esc

Printer-friendly Version

Interactive Discussion



The radiative transfer forward model (FM) assumes clear-sky conditions (molecular Rayleigh scattering only), such that differences between the modeled and measured radiances are often apparent when the scene contains cloud or aerosol. Estimates of the surface pressure from this algorithm, differenced against values from the nearest 3, 6, 9 or 12 h European Centre for Medium-Range Weather Forecasts (ECMWF) forecasts, interpolated to the observation, are calculated as; $\Delta\rho_{s,\text{cld}} = \rho_s - \rho_{s,a}$. This variable, along with the surface albedo (α) and the χ^2 goodness-of-fit statistic are used to identify changes in the expected optical path length, allowing scenes to be flagged as cloudy or clear. The ABP algorithm was applied to early GOSAT data in Taylor et al. (2012), with further analysis performed on realistic GOSAT simulations given in O'Dell et al. (2012). More detail about this algorithm as applied to OCO-2 can be found in O'Dell et al. (2014). Simulations have demonstrated the ability of the ABP to reliably determine scenes contaminated with mid- or high-altitude clouds, although it sometimes has trouble detecting low level clouds, even when they are optically thick (O'Dell et al., 2012).

2.2 The IMAP-DOAS Preprocessor (IDP)

The IDP algorithm performs independent, single-band non-scattering retrievals of the CO_2 and H_2O column abundances using radiances measured in the $1.61\ \mu\text{m}$ (weak) and $2.06\ \mu\text{m}$ (strong) CO_2 (R_{CO_2}) and H_2O ($R_{\text{H}_2\text{O}}$) column abundances are computed as;

$$R_{\text{gas}} = \frac{\text{VCD}_{\text{gas}}^{\text{W}}}{\text{VCD}_{\text{gas}}^{\text{S}}}, \quad (1)$$

where VCD represents the vertical column density of the retrieved gas (CO_2 or H_2O) in the weak and strong absorption bands.

Clouds and aerosols modify the optical path length in the two bands differently, producing column abundance ratios significantly different from unity (Frankenberg, 2014).

**OCO-2 cloud
screening validation**

T. E. Taylor et al.

Title Page

Abstract

Introduction

Conclusions

References

Tables

Figures



Back

Close

Full Screen / Esc

Printer-friendly Version

Interactive Discussion



There are two fundamental reasons why the ratio deviates from unity in the presence of scattering; First, for most terrestrial surfaces, surface albedos in the 1.6 μm band are most often higher than at 2.0 μm . This yields a variable fractional contribution of scattered light to the OCO-2. Secondly, band strengths are highly variable, resulting in different sensitivities to atmospheric scattering. If no scattering is assumed in the retrieval, a deviation from unity in the ratio thus indicates a substantial variation in the photon path-length (PPL) distribution between the two bands, while, in the absence of scattering, this ratio approaches unity. Details of the basic IDP retrieval algorithm mechanics can be found in Frankenberg et al. (2005). In contrast to the ABP, which is more sensitive to the altitude of the effective scattering layer, the IDP is more sensitive to spectrally dependent variations associated with the surface in the presence of clouds and aerosols, or with the scattering properties of these particles, especially aerosols.

2.3 Combing ABP and IDP on simulated data

Following the methodology described in O'Dell et al. (2012), the effectiveness of the combined ABP and IDP filters was tested using simulated OCO-2 and GOSAT measurements. These studies document observable differences in the cloud screening results between OCO-2 and GOSAT and quantify the relative reliability of the ABP for identifying high, thin cloud. They also provide predictions of the performance of the combined ABP and IDP algorithms.

A large set of simulations for both OCO-2 and GOSAT were created via the CSU orbit simulator model (O'Brien et al., 2009), which has realistic distributions of clouds, aerosols, surface types, and viewing geometries for both missions. The OCO-2 orbit geometry was adopted for both instruments. The simulation data set consists of 96 orbits spanning three days in both June and December to cover a full range of solar zenith angles and viewing conditions. Soundings with a sub-satellite point over land were set to nadir viewing geometry, while those over water were set to view the specular glint spot. A temporal sampling rate of 1 Hz was used. Only the instrument model used

to convolve the top-of-atmosphere (TOA) reflected radiances differs between the two sets of simulations.

The major differences in the OCO-2 and GOSAT instruments are polarization sensitivity, spectral resolution, Instrument Line Shape (ILS) and the noise models. Full details on the specific sensors and calibration procedures can be found in Crisp et al. (2008); O'Dell et al. (2011); Day et al. (2011); Rosenberg et al. (2015); Lee et al. (2015) and Bösch et al. (2015) for OCO-2 and Kuze et al. (2009) and Yoshida et al. (2010) for GOSAT.

O'Dell et al. (2012) found that 20–40 % of thick, low water clouds or aerosol layers with total optical depth (TOD) $\gtrsim 1$ can be missed by the ABP for GOSAT simulated observations over land. The culprit appears to be a nearly-complete cancellation of PPL shortening and lengthening, which can occur for certain combinations of cloud top pressure, cloud optical depth, solar zenith angle and the O₂ A-band surface albedo (e.g., see Sect. 2 of Taylor and O'Brien, 2009). This may be related to the “critical albedo” phenomenon described in Seidel and Popp (2012). In general, these cancellation effects can also occur in the weak and strong CO₂ bands, but are unlikely to occur in all three spectral regions simultaneously.

Panel (a) of Fig. 1 shows differences between the surface pressure retrieved by the ABP and the model a priori values, $\Delta p_{s,\text{cld}}$, as a function of the model cloud plus aerosol optical depth (TOD) for $\approx 30\,000$ synthetic soundings in nadir viewing mode over land in the month of June. The soundings are colored by the cloud relative height, defined as the height at which the partial-column TOD at 760 nm reaches the smaller of 50 % of the TOD or unity, where the integration begins at the top of the atmosphere. This is a unitless quantity, as it is normalized by the surface pressure, i.e. hPa/hPa. Values near zero (blue colors) represent high cloud or aerosol layers, while values near unity (red colors) represent low cloud or aerosol layers. The horizontal black lines in the figure show thresholds used to separate cloudy scenes from clear-sky.

For the OCO-2 instrument model, the value of $\Delta p_{s,\text{cld}}$ diverges from zero at a lower TOD for the high clouds (blue colors) than it does for low clouds (red colors). This is

**OCO-2 cloud
screening validation**

T. E. Taylor et al.

Title Page

Abstract

Introduction

Conclusions

References

Tables

Figures



Back

Close

Full Screen / Esc

Printer-friendly Version

Interactive Discussion



an indicator of the ABP's ability to detect high, optically thin clouds due to strong PPL modification. However, the ABP has more difficulty identifying low clouds, even some that are optically thick, as seen by the large number of bright red data points with small $\Delta p_{s, \text{cld}}$ at high TOD. This is due to their relatively small effect on PPLs.

Results (not shown) were quantitatively similar for GOSAT, although the divergence of $\Delta p_{s, \text{cld}}$ from zero for high cloud occurs at higher values of TOD than it does for the OCO-2 instrument model. This suggests a lower sensitivity in the O₂ A-band, implying that the ABP is more sensitive to contamination by optically thin scattering layers for OCO-2 than for GOSAT. Further tests (not shown) indicate that this is not due to the difference in polarization response between the two instruments. Because their spectral ranges and resolutions are similar, the difference could be due to the OCO-2 noise model, which provides higher SNR in the absorption line cores relative to the continuum than does the spectrally uniform noise model of GOSAT. Another explanation for the improved OCO-2 sensitivity to thin clouds may be the much quicker fall of in the ILS wings, which should lead to deeper line cores despite the narrower full width at half max (FWHM) of the GOSAT ILS.

The IDP R_{CO_2} and $R_{\text{H}_2\text{O}}$ vs. the TOD are shown in panels (b) and (c) of Fig. 1. Here, the color represents the ratio of the 1.61 μm to the 2.06 μm retrieved effective albedos, $R_\alpha = \alpha_{1.61 \mu\text{m}} / \alpha_{2.06 \mu\text{m}}$. For low TOD ($\lesssim 0.1$), R_{CO_2} and $R_{\text{H}_2\text{O}}$ are close to unity for all R_α . However, for larger TOD cases, R_{CO_2} and $R_{\text{H}_2\text{O}}$ tend to deviate from unity, almost exclusively in the positive direction. This is a consequence of the lower surface albedo over land in the strong CO₂ band relative to the weak CO₂ band, resulting in more PPL shortening as photons forward-scattered through a cloud layer are more likely to be absorbed by the surface. Thus, strong CO₂ band IDP retrievals tend to estimate a smaller gas column (of either CO₂ or H₂O) than those in the weak CO₂ band, yielding weak/strong ratios greater than unity.

As R_α diverge from unity (move from blue to red colors in the plots), IDP R_{CO_2} and $R_{\text{H}_2\text{O}}$ also diverge from unity for lower values of the model TOD, thus allowing for more

OCO-2 cloud
screening validation

T. E. Taylor et al.

Title Page

Abstract

Introduction

Conclusions

References

Tables

Figures



Back

Close

Full Screen / Esc

Printer-friendly Version

Interactive Discussion



effective screening. In other words, when there is significant albedo contrast in the scene, the IDP has higher fidelity in identifying contamination by cloud and aerosol.

Figure 2 compares the fraction of soundings identified as clear by ABP only (blue), IDP only (green) and the combined set (black) for the OCO-2 June nadir-land simulated observations. The total number of scenes and the percent identified as clear are labeled on each panel for the three cloud screening combinations in the corresponding colors. Cloud screening yields are shown for (a) all scenes, (b) high clouds only and (c) low clouds. The values of the selected screening variables are provided in Table 1.

The top panel indicates general agreement between the two cloud screening algorithms in the all-scenes case. For example, when $TOD = 0.25$, about 50 % of the scenes are being identified as clear by both ABP and IDP. The combination of ABP and IDP provides a more aggressive screening than a single filter, as seen by the lower fraction of scenes identified as clear at any given TOD. This indicates that ABP and IDP are triggered by different features in the spectra and are not flagging identical soundings. All three filter combinations exhibit a smooth decay toward zero fraction passing with increasing TOD, except for a noticeable “hump” in the fraction identified as clear when $TOD \simeq 3$, i.e., a misidentification of cloudy scenes as clear.

To investigate these misclassifications in more detail, the same analysis was performed on two sounding subsets; high-clouds shown in panel (b) and low clouds in panel (c) of Fig. 2. Here, high (low) cloud is defined as cases where 95 % of the TOD resides in the top 40 % (bottom 30 %) of the atmosphere. About 4 and 18 % of the soundings were classified as high cloud and low cloud cases, respectively.

At $TOD = 0.25$, the percent identified as clear is 0, 4 and 0 % for the ABP, IDP and combined cloud screens, respectively. This is consistent with previous results (Taylor et al., 2012; O’Dell et al., 2012) that show the ABP filter to be extremely effective at screening high clouds.

The lower panel of Fig. 2 shows that a large fraction of the optically thick, low clouds are not being identified by the ABP. For example, when $TOD = 1.0$, the OCO-2 clear-yields are 83, 64 and 61 % for ABP, IDP and combined cloud screens, respectively.

OCO-2 cloud screening validation

T. E. Taylor et al.

Title Page

Abstract

Introduction

Conclusions

References

Tables

Figures



Back

Close

Full Screen / Esc

Printer-friendly Version

Interactive Discussion



**OCO-2 cloud
screening validation**

T. E. Taylor et al.

Title Page

Abstract

Introduction

Conclusions

References

Tables

Figures

◀

▶

◀

▶

Back

Close

Full Screen / Esc

Printer-friendly Version

Interactive Discussion



This supports the findings for GOSAT presented in O'Dell et al. (2012) and confirms that ABP alone is unlikely to detect low clouds observed by OCO-2. However, combining the two filters yields a reduction of about a third in the number of low-altitude, cloud contaminated scenes with $TOD = 1$, compared to using the ABP alone. As shown in O'Dell et al. (2012), the remaining cloud contaminated scenes do not exhibit PPL modifications in any band, and therefore may yield unbiased X_{CO_2} retrievals.

In summary, combining the ABP and IDP cloud filters in tandem yields a robust cloud and aerosol screener that is more effective at identifying scenes with both high- and low-altitude scattering material than either algorithm alone. Results from these two preprocessors are used in the sounding selection process for the OCO-2 L2 X_{CO_2} retrieval algorithm.

3 OCO-2, MODIS and CALIOP collocated data sets

The A-Train is comprised of six satellites flying in tight formation that provide near-simultaneous observations from fourteen sensors (L'Ecuyer and Jiang, 2010). The OCO-2 reference ground track (RGT) is identical to the CloudSat RGT, which is displaced 217.3 km east of the World Reference System (WRS)-2 track and has an equator crossing time of 13:30 on the ascending node. This ground track was chosen so that, when OCO-2 is in the nadir observation mode, the surface footprints of the spectrometers are centered on the same ground track as the CloudSat radar and CALIPSO lidar.

Of particular interest for the validation of OCO-2 cloud screening are measurements made by MODIS-Aqua and CALIOP, which pass over an Earth ground target approximately 7.5 min after OCO-2. The wide swath (2330 km cross-track) of the MODIS instrument provides complete collocation with the narrow ground track (< 10 km) of OCO-2. The MODIS cloud mask product is well-characterized and easy to interpret (Ackerman et al., 1998, 2008), while the CALIOP cloud layered product provides unique

information on the vertical distribution of clouds, albeit with a narrow ground track of only $\approx 333\text{m}$ native resolution (Winker et al., 2007; Vaughn et al., 2009).

A variety of MODIS-Aqua and CALIOP products, subsetted to the OCO-2 ground tracks, are being produced by the Cooperative Institute for Research in the Atmosphere (CIRA) Data Processing Center (DPC) at Colorado State University in collaboration with the A-Train Data Depot (ATDD) at the Goddard Earth Sciences Data and Information Services Center (GES-DISC). These products are being used for a variety of tasks such as spectral vicarious calibration of the instrument and detailed cloud and aerosol analysis. They will be made available to researchers upon request. The work presented here uses these collocated MODIS-Aqua and CALIOP products to provide validation of the OCO-2 B7 cloud and aerosol screening for four sets of 16-day orbit repeat cycles in both nadir and glint viewing modes, as summarized in Table 2.

Figure 3 provides an example of the collocation of MODIS pixels to OCO-2 footprints. The OCO-2 spacecraft, and hence spectrometer slit, rotates as a function of latitude, producing frames that are nearly perpendicular (parallel) to the direction of motion near the equator (poles). Panel (a) provides spatial context of the narrow ($\approx 10\text{km}$) swath of OCO-2 relative to part of the very wide ($\approx 2330\text{km}$) MODIS swath. This particular scene is across the Libyan desert in northern Africa on 13 August 2015 (orbit 5930), at which latitudes the OCO-2 slit is aligned non-perpendicular to the motion of the spacecraft, providing a swath width somewhat reduced from the 10 km maximum near the equator. Panel (b) zooms in on a portion of Panel (a) to show the relative size of the OCO-2 footprints against this typical scene of scattered clouds. In both panels, the individual OCO-2 footprints are labeled as cloudy (black) or clear (blue) based on the results from the combined ABP and IDP cloud screening algorithms. Detailed explanation of the collocation technique is provided in the following section.

An analysis of the full OCO-2 B7 data set spanning 6 September 2014 to 1 August 2015 (orbit numbers 958 to 5762) showed that, on average, slightly more than one third (36 %) of the nadir-land soundings pass the ABP operational cloud flag on a per-orbit basis. For nadir-water, glint-land and glint-water observations, the mean

OCO-2 cloud screening validation

T. E. Taylor et al.

Title Page

Abstract

Introduction

Conclusions

References

Tables

Figures



Back

Close

Full Screen / Esc

Printer-friendly Version

Interactive Discussion



OCO-2 cloud screening validation

T. E. Taylor et al.

Title Page

Abstract

Introduction

Conclusions

References

Tables

Figures

◀

▶

◀

▶

Back

Close

Full Screen / Esc

Printer-friendly Version

Interactive Discussion



per-granule pass rates are 1.9, 26.9 and 23.0 %, respectively. The small yield for nadir-water soundings is predominately due to low signal-to-noise ratios, not just because they are cloudy. The few that do pass are both clear-sky and with geometry that allows high SNR values. These soundings make up a very small fraction of the full OCO-2 data set and will not be considered further in the current analysis. The ABP and IDP cloud screening algorithms used for the operational B7 data set are identifying approximately 20 % of the one million daily soundings as clear. Of those soundings that are passed to the L2 retrieval algorithm, approximately 80 % are sufficiently cloud free to yield X_{CO_2} estimates that converge.

3.1 Collocation methodology

The ATDD generates collocated MODIS L1B and L2 atmospheric products for many of the satellites in the A-Train constellation using the algorithm described in Savtchenko et al. (2008). The main difference in the creation of the OCO-2 product relative to other A-Train sensors is the preparation of the reference track for ingest into the collocation algorithm. In the case of CloudSat, it is most convenient to use the Two-line Elements of the spacecraft to compute 15 min of CloudSat ground track for every MODIS 5 min granule. However, the OCO-2 flight modes make this simple approach unattainable. Instead, the geolocation and time information of the central OCO-2 footprint must be extracted from an OCO-2 L1B science granule. Based on that time, an “OpenSearch” request is formulated and sent to the MODIS Processing System (LAADS). Upon acquiring the corresponding MODIS 5 min granules (typically 9 per OCO-2 granule), a work order is logged with the GES-DISC to push MODIS granules through the processing system. In most cases, part of the processing involves extrapolation of the OCO-2 track using the great arc model. The extrapolation is sufficiently accurate to extend the ground track of the OCO-2 footprint so that the resulting reference ground track fully transects the acquired MODIS granules. The resulting output are MODIS-like 5 min HDF-EOS files that contain all the MODIS geolocation and science data for a given product within ± 50 km of the OCO-2 ground target.

OCO-2 cloud screening validation

T. E. Taylor et al.

Title Page

Abstract

Introduction

Conclusions

References

Tables

Figures



Back

Close

Full Screen / Esc

Printer-friendly Version

Interactive Discussion



Supplemental collocation of the OCO-2 soundings is performed at the DPC for MODIS L1A 1 km satellite and scene information, L1B half-km radiances, 1 and 5 km cloud properties, and the 10 km aerosol product as well as the CALIOP 1 km cloud layer product and the 5 km cloud and aerosol layered products. As is done at the ATDD, the date and time information is extracted from the OCO-2 L1B files to determine the corresponding MODIS and CALIOP granules. Then any product-specific preprocessing is performed and a pixel-by-pixel matching to the OCO-2 geolocation is done. Note that, in the case of MODIS products, the information from all 5 min granules corresponding to a given OCO-2 granule are outputted to a single file, such that there is a one-to-one file correspondence between the original OCO-2 granule and the collocated MODIS products.

The resultant DPC output HDF-5 files contain geolocation and science data within ± 50 km of the OCO-2 ground target for MODIS and all geolocation and data for CALIOP. They also contain the geolocation and time information for OCO-2 along with the x and y MODIS or CALIOP pixel location for each match-up, as well as information that allows users to trace back to the original MODIS and OCO-2 files including file names, subset start pixel index and collection label. This configuration allows user customization of the match-up process, such as distance-dependent pixel searching.

3.2 MODIS cloud mask

In this work, we define a hybrid MODIS cloud mask by combining the standard cloud mask (Ackerman et al., 1998; Frey et al., 2008) with the $1.38 \mu\text{m}$ cirrus reflectance value (Gao et al., 2002), both contained in the MYD06 cloud product. This follows the procedure first described in Taylor et al. (2012). Each OCO-2 footprint, i.e. a scene, is assigned a reference state of either clear or cloudy based on the following MODIS cloud criteria. First, a subset is formed of all 1 km MODIS pixels with center latitude and longitudes falling within 2 km of the center latitude and longitude of an OCO-2 footprint. All scenes in which all of the MODIS pixels are labeled as confident or probably clear and with cirrus reflectance, \mathcal{R} , less than 0.01, are defined as clear-sky. If either of

OCO-2 cloud screening validation

T. E. Taylor et al.

Title Page

Abstract

Introduction

Conclusions

References

Tables

Figures



Back

Close

Full Screen / Esc

Printer-friendly Version

Interactive Discussion



these conditions are violated, then the reference state of the scene is considered to be cloudy. We limit the analysis to MODIS pixels with viewing zenith angle $< 30^\circ$, to avoid oblique lines of sight which can introduce errors (Maddux et al., 2010). No limit is placed on the SZA.

There is a temporal discrepancy between the overpass time of OCO-2 and MODIS of about 7.5 min, during which the geometrical and optical properties of clouds are subject to small changes and/or drifting in or out of the scene. However, errors in the validation procedure are mitigated by enforcing the 2 km radial search ($\approx 12.5 \text{ km}^2$) when matching MODIS pixels to the OCO-2 footprints. This conservative search requirement has the added benefit of mitigating sub-FOV cloud effects, which the ABP has been shown to have difficulty identifying via simulations created using a three dimensional radiative transfer model (Merrelli et al., 2015). The effect was shown to lead to biases of up to several parts per million in X_{CO_2} , dependent on the cloud size, surface albedo and illumination geometry, for tropospheric liquid water clouds.

The search criteria produces about ten matching MODIS pixels per OCO-2 sounding. Tests were performed to ensure that the agreement between OCO-2 and MODIS cloud flags are not overly sensitive to the choice of the search radius, the cirrus reflectance or the sensor zenith angle.

Using the custom cloud mask described above, the MODIS cloudy-sky fraction was calculated from the collocated data set for the four 16-day repeat cycles used in this analysis. Figure 4 presents the results for the December and April–May data sets. The soundings are binned in 4° by 4° lat/lon boxes, revealing both the total global extent of the analyzed data set as well as the large spatially coherent cloudy and clear areas. Extensive portions of the globe, especially the higher latitudes, are cloud covered a large fraction of the time ($> 80\%$), while the Sahara and other dry land regions have low cloud fraction. In general, the subtropical oceans have cloud fractions ranging from about 50 to 100 %. The global mean fraction of cloudy scenes is around 80 %, in close agreement with that reported in Fig. 13 of Miller et al. (2007).

3.3 CALIOP layered data

The CALIOP collocated product used in this work is comprised of 233 orbits, spanning days 7 to 22 May 2015. For each OCO-2 sounding, the CALIOP data point with the closest latitude and longitude to the OCO-2 footprint was selected. In this analysis, we limited the data to soundings falling within 5 km to minimize the differences in the observed atmospheric and surface conditions. This provided a mean FOV difference of 3.0 km (and about 7 min due to difference in overpass times) for the collection. Two useful cloud metrics, derived from these CALIOP data, were used to analyze the performance of the OCO-2 cloud screening algorithms.

The sum of the cloud and aerosol optical depths at 532 nm, taken from the 5 km cloud and aerosol layered products, respectively, provided the reference total optical depth ($TOD_{532\text{nm}}$) corresponding to each collocated OCO-2 sounding. The effective cloud top pressure (p_c) for each CALIOP collocation was calculated by integrating $TOD_{532\text{nm}}$ vertically through the atmosphere (starting at the top) until $TOD_{532\text{nm}} > 1$ was achieved. The pressure value at the center of that layer was then assumed to represent p_c . This value was then normalized by the ECMWF model surface pressure (taken from the ABP prior), to give the normalized effective cloud top pressure, \bar{p}_c . Thus, low altitude clouds correspond to p_c values near unity, while clouds higher in the atmosphere are represented by \bar{p}_c values near zero. This quantity is similar to, but slightly different than the cloud relative height that was described for the simulations in Sect. 2.3.

Expressions for determining \bar{p}_c are given as;

$$TOD(p_c) = 1 = \sum_{p(\text{TOA})}^{p_c} TOD \Delta p, \quad \bar{p}_c = p_c / p_s, \quad (2)$$

where p_s gives the surface pressure.

There is a spectral mismatch when comparing the CALIOP measurements at 532 nm, to the OCO-2 cloud screening results, which use measurements taken at 760, 1610 and 2060 nm. It is possible that this could lead to disagreements in classifying

Title Page

Abstract

Introduction

Conclusions

References

Tables

Figures



Back

Close

Full Screen / Esc

Printer-friendly Version

Interactive Discussion



scenes as either cloudy or clear, especially for small aerosol types that have large Angstrom coefficients. Some errors will exist in the agreement between the two sensors reported in the current study due to this spectral mismatch, as well as the small spatial and temporal discrepancies described above.

4 Validation of OCO-2 cloud screening algorithms

4.1 Contingency table analysis

Direct comparison of the OCO-2 cloud screening algorithm results to MODIS are analyzed using contingency tables (CT), which provide compact summary statistics for comparing large, predictive data sets. This analysis follows that given in Taylor et al. (2012) on GOSAT data. For each sounding, there are four classification possibilities; The cloud screening algorithms can agree that the scene is clear or cloudy; true positives (TP) and true negatives (TN), respectively. Soundings can also be classified as false positives (FP), when MODIS indicates cloud but OCO-2 identifies the scene as clear, or false negatives (FN), when MODIS indicates clear but OCO-2 cloud. The classification of scenes by MODIS will be referred to as the “reference” state, while scene classification by the OCO-2 preprocessors will be termed the “predicted” state.

Each CT value can be interpreted in terms of a rate, calculated as;

$$\begin{aligned} \text{True Positive Rate;} & \quad \text{TPR} = N_{\text{TP}}/N_{\text{clear}}, \\ \text{False Negative Rate;} & \quad \text{FNR} = N_{\text{FN}}/N_{\text{clear}}, \\ \text{False Positive Rate;} & \quad \text{FPR} = N_{\text{FP}}/N_{\text{cloud}}, \\ \text{True Negative Rate;} & \quad \text{TNR} = N_{\text{TN}}/N_{\text{cloud}}, \end{aligned} \quad (3)$$

where, N_{TP} , N_{FN} , N_{FP} and N_{TN} are the number of collocated TP, FN, FP and TN soundings, respectively, and N_{clear} and N_{cloud} give the number of reference clear and cloudy atmospheres, respectively.

OCO-2 cloud screening validation

T. E. Taylor et al.

Title Page

Abstract

Introduction

Conclusions

References

Tables

Figures



Back

Close

Full Screen / Esc

Printer-friendly Version

Interactive Discussion



OCO-2 cloud screening validation

T. E. Taylor et al.

Title Page

Abstract

Introduction

Conclusions

References

Tables

Figures

◀

▶

◀

▶

Back

Close

Full Screen / Esc

Printer-friendly Version

Interactive Discussion



Three useful diagnostic variables can be calculated from the CT values;

$$\begin{aligned}
 \text{Throughput;} & & & = N_{\text{TP}} + N_{\text{FP}}, \\
 \text{Agreement;} & & & = (N_{\text{TP}} + N_{\text{TN}})/N_{\text{total}}, \\
 \text{Positive Predictive Value; PPV} & & & = N_{\text{TP}}/(N_{\text{TP}} + N_{\text{FP}}),
 \end{aligned} \tag{4}$$

where $N_{\text{total}} = N_{\text{clear}} + N_{\text{cloud}} = N_{\text{TP}} + N_{\text{FN}} + N_{\text{FP}} + N_{\text{TN}}$ is the total number of collocated scenes.

The throughput gives the fraction of the total number of collocated scenes that are identified as clear by the OCO-2 cloud screening algorithms. The agreement gives the fraction of scenes that are correctly predicted by the OCO-2 cloud screening algorithms, relative to the MODIS reference state. The positive predictive value (PPV) gives the fraction of the reference clear soundings, i.e., the MODIS clear soundings, also predicted clear by the OCO-2 preprocessors.

4.2 Optimization of the cloud screening algorithm thresholds for the MODIS comparison

We now use CT analysis to explore the optimization of the OCO-2 ABP and IDP cloud screening algorithms by calculating an ensemble of CT diagnostics given in Eq. (4) for varying values of the cloud screening thresholds. This analysis was performed using the OCO-2 data sets that were introduced in Sect. 3.

Systematic variations in the threshold values are expected to alter the diagnostic values. The objective is to develop filters such that a tightening (i.e., narrowing) of the thresholds generally yields an increase in the agreement and the PPV, while simultaneously decreasing the throughput. Given filters that satisfy these rules, an aggressive cloud screening can be achieved by tightening the thresholds. Conversely, if the design goal is to filter only the most grossly contaminated scenes while maximizing the throughput at the expensive of the agreement, then the filtering thresholds can be set to relatively loose values. For OCO-2, our design goal is to pass approximately

OCO-2 cloud screening validation

T. E. Taylor et al.

Title Page

Abstract

Introduction

Conclusions

References

Tables

Figures

◀

▶

◀

▶

Back

Close

Full Screen / Esc

Printer-friendly Version

Interactive Discussion



25–30 % of soundings without introducing spatial sampling biases. This value corresponds to 5–10 % more than the clear-sky fraction observed by MODIS. This inflation over the MODIS number is necessary since some of the passed soundings are actually cloudy. It is crucial that as many of the scenes as possible are correctly classified, while limiting the number of false negative cases (MODIS clear, OCO-2 cloudy), as once sounding have been identified as cloudy by either ABP or IDP, they are never to be run in the L2 X_{CO_2} retrieval algorithm.

The left column of Fig. 5 shows contour plots of the throughput, agreement and PPV for the May nadir-land OCO-2 soundings as a function of the $\Delta p_{\text{s,clid}}$ and the χ^2 scaling factor, the two primary screening thresholds for the ABP algorithm. The tradeoff in trying to maximize all three diagnostic parameters simultaneously is evident. In general, as the agreement and PPV increase with tighter choices of $\Delta p_{\text{s,clid}}$ and χ^2 , the throughput decreases. For this particular data set, setting $\Delta p_{\text{s,clid}}$ to 20 hPa and χ^2 scale factor to 5 (the operational settings of the OCO-2 ABP since launch are 25 hPa and χ^2 scale factor = 20) allows a throughput \simeq 40 %, with agreement \simeq 78 % and PPV \simeq 55 %.

The inclusive ranges of the IDP R_{CO_2} and $R_{\text{H}_2\text{O}}$ values are described by a center point plus and minus a halfwidth value. The middle and right columns of Fig. 5 show results from the optimization testing for IDP R_{CO_2} and $R_{\text{H}_2\text{O}}$ halfwidth vs. center point values, respectively. Values of 0.99 ± 0.04 and 0.99 ± 0.2 for nadir-land were selected for R_{CO_2} and $R_{\text{H}_2\text{O}}$, respectively, as shown in Table 1. These values were then implemented in the cloud screen comparison to MODIS that will be detailed in Sect. 4.3. Note that the results for the glint-land and glint-water viewing scenarios differed slightly compared to the nadir-land results, as shown in Table 1. Furthermore, slight differences were observed between the winter and spring data sets, indicating that the thresholds values should be carefully selected to minimize over-filtering of the data.

4.3 Validation of OCO-2 cloud screening algorithms against MODIS

After optimization of the cloud screening thresholds, contingency tables were generated using the combined ABP and IDP algorithms. The analysis was performed separately for each of the three viewing scenarios; nadir-land, glint-land and glint-water using the data sets for the four 16-day repeat cycles referenced in Table 2. The results of the CT analysis are displayed in Table 3.

Overall, the results are very encouraging. The throughputs using the combined ABP and IDP cloud screenings range from 20% for the spring glint-water data to 31% for the spring glint-land data. Agreement with MODIS for the six data sets ranges from a low of 79% for spring glint-land to 88% for spring glint-water. Finally, the positive predictive values range from 46% for winter land (both nadir and glint) to 67% for spring nadir-land.

The roughly 15–20% of scenes that are in disagreement can be explained by a number of factors, one being the stringent MODIS search criteria for defining the reference scene as clear or cloudy. In some cases, one or two of the approximately ten MODIS pixels that are matched to a single OCO-2 footprint may be labeled as probably or confidently cloudy. This causes the reference scene to be defined as cloudy, although the OCO-2 footprint itself may be observing clear-sky. In addition, an OCO-2 footprint can potentially miss sub-FOV clouds as demonstrated by Merrelli et al. (2015). These very same scenes would presumably have been identified as cloudy by MODIS, which has a smaller spatial footprint. Finally, the OCO-2 “cloud-mask” does not discriminate aerosol vs. cloud. Therefore, some aerosol-laden clear scenes will be correctly identified by MODIS as clear, and correctly identified by OCO-2 as cloudy, because of this difference in definition.

Another fundamental reason for disagreement between the OCO-2 cloud screening algorithms and MODIS is that the comparisons are in reference to MODIS as truth, an assumption that is not void of uncertainties. There are errors inherent in comparing cloud screening between satellite sensors with very different instrument characteristics

OCO-2 cloud screening validation

T. E. Taylor et al.

Title Page

Abstract

Introduction

Conclusions

References

Tables

Figures



Back

Close

Full Screen / Esc

Printer-friendly Version

Interactive Discussion



OCO-2 cloud screening validation

T. E. Taylor et al.

Title Page

Abstract

Introduction

Conclusions

References

Tables

Figures



Back

Close

Full Screen / Esc

Printer-friendly Version

Interactive Discussion



and specifications which are not viewing exactly the same scene with the same viewing geometry at the same time. Furthermore, the cloud screen threshold values were selected to be relatively loose. As was discussed in Sect. 4.2, tighter thresholds generally increase PPV, but reduce the throughput.

5 The contingency table analysis given in Table 3 indicates the good agreement for the reference cloudy scenes (TNR \simeq 80–90 %) vs. the lower agreement for the reference clear scenes (TPR \simeq 65–75 %). This suggests that the OCO-2 cloud screening algorithms, as configured in this study, are more sensitive to contamination by cloud and aerosol than is MODIS.

10 An investigation of the eight OCO-2 footprints per frame via CT statistics reveals no strong footprint-dependence. The range of variability for all of the CT values across footprints is always well under 2 % and is generally closer to 1 %, which is essentially within the noise.

15 It is critical to avoid spatial sampling biases in the measurement of X_{CO_2} , as these can yield serious errors in flux inversion estimates (Liu et al., 2014). To this end, it is desirable for the OCO-2 cloud screening algorithms to pass as many of the clear-sky scenes as possible in persistently cloudy regions such as the convective tropics. There is only a modest penalty if the cloud screening thresholds are set too loosely, and some cloudy scenes are passed, as most will be identified and rejected by the
20 OCO-2 L2 retrieval algorithm.

To assess the spatial distributions of the contingency table values in the current analysis, the combined glint and nadir data sets were gridded into 4° latitude by 4° longitude bins, and the fractions that agree and disagree in each bin were calculated. The results are presented in Fig. 6, which shows the winter data in the left column and the spring data on the right. The top panels show that the global agreement of \simeq 85 %
25 in both seasons (and for all viewing geometries) contains large, spatially correlated regions with > 90 % agreement over much of the total land mass as well as the northern Atlantic, northern Pacific, eastern Indian and Southern oceans. Other regions generally

have cloud screening agreement $\approx 70\text{--}80\%$, with a few areas agreeing less than 60% of the time, such as certain ocean regions, and northern Africa in April–May.

The middle and bottom panels of Fig. 6 show the two types of disagreement in the cloud screeners, false negatives (MODIS clear, OCO-2 cloudy) and false positives (MODIS cloudy, OCO-2 clear), respectively. The false negative errors tend to occur over tropical and subtropical oceans. The reason for this disagreement is unclear, but seems to imply that these are very thin cloud cases to which OCO-2 is more sensitive than is MODIS. The false positive errors, shown in the lower panels, are heavily concentrated over the Sahara and Tibetan plateau land regions, where some grid cells exceed 50% of scenes in disagreement in spring. These are very likely to be driven by desert dust and topographic features, as discussed below.

Differences in the spatial patterns are evident when comparing the winter and spring data, although the global statistical agreements are very similar (86% for winter vs. 85% for spring). There are three obvious difference features over land, each of which may be manifestations of distinct issues. One major difference in the seasonal cloud screening agreement is seen over the Arabian peninsula, where the fraction of false negatives increased from near 0% in winter to $40\text{--}50\%$ or more in spring. These misclassifications appear to be driven by a high aerosol loading. Specifically, the MODIS cloud mask correctly identifies these scenes as clear, but a single case study of the MODIS Deep-Blue derived AODs (Hsu et al., 2013) revealed that sometimes these scenes are heavily aerosol laden. As stated above, the OCO-2 screening algorithms do not discriminate between aerosol and cloud, and hence identify any scenes that are contaminated by cloud and/or aerosol.

The second significant temporal difference feature over land is seen over the Sahara, where the fraction of false positive scenes (MODIS cloudy, OCO-2 clear) increases from about 25% to more than 50% from winter to spring. Observations from the Total Ozone Mapping Spectrometer (TOMS) indicate increased dust loads over this region during the warmer months (peak in June and July), with a minimum in October and November (Engelstaedter et al., 2006). The reason for the disagreement here is un-

OCO-2 cloud screening validation

T. E. Taylor et al.

Title Page

Abstract

Introduction

Conclusions

References

Tables

Figures



Back

Close

Full Screen / Esc

Printer-friendly Version

Interactive Discussion



clear, though it seems unlikely that MODIS would be incorrectly identifying dust-laden scenes as cloudy, while OCO-2 identifies them as clear. These cases warrant further investigation to identify the source of this discrepancy.

Finally, the distribution of the false positive scenes over the Tibetan plateau decreases in spatial extent from winter to spring but becomes more concentrated in the eastern edge. This phenomena may be driven by the extreme topography and/or snow cover of this region, though at this point it is not clear which of the two cloud screeners (MODIS or OCO-2) is in error.

The spatial change in the agree/disagree distribution from winter to spring is less pronounced over ocean compared to land. The most distinct signal is a tracking of the sub solar point as it moves northward between the seasons. This would indicate a largely SNR driven issue, i.e., as the SNR of OCO-2 increases, so too does the sensitivity to very mild scattering effects. Most of the disagreements over ocean are of the false negative type (MODIS clear, OCO-2 cloudy), which, as stated previously, could be due to a more sensitive cloud identification by OCO-2 relative to MODIS.

In general, the global patterns in the cloud screening agreements between winter and spring look much the same, indicating that there does not appear to be strong seasonally-dependent sampling biases in the OCO-2 cloud screened data set. The spatial and temporal differences have, for the most part, been explained, although a rigorous analysis and verification of the proposed hypotheses has yet to be made.

4.4 Validation of OCO-2 cloud screening algorithms against CALIPSO

The next step in our validation of the OCO-2 cloud screening algorithms was to assess the cloud screening performance against collocated CALIOP measurements. The CALIOP TOD_{532nm} and the normalized effective cloud top pressure (\bar{p}_c), introduced in Sect. 3.3, were used. CALIOP is more sensitive to low optical thicknesses than is MODIS, and provides information on the vertical structure of scattering layers, allowing for a more quantitative analysis of the OCO-2 cloud screening abilities and a basis for investigating soundings for which the OCO-2 and MODIS cloud screenings differ.

OCO-2 cloud screening validation

T. E. Taylor et al.

Title Page

Abstract

Introduction

Conclusions

References

Tables

Figures



Back

Close

Full Screen / Esc

Printer-friendly Version

Interactive Discussion



OCO-2 cloud screening validation

T. E. Taylor et al.

Title Page

Abstract

Introduction

Conclusions

References

Tables

Figures



Back

Close

Full Screen / Esc

Printer-friendly Version

Interactive Discussion



Figure 7 demonstrates the performance of the OCO-2 cloud screening relative to CALIOP data for the May nadir-land observations. The analysis is restricted to nadir observations because the small swath of CALIOP does not allow for collocation with OCO-2 in glint viewing mode. The top panel shows the percent of soundings identified as clear (right ordinate) against the CALIOP $TOD_{532\text{ nm}}$ for the ABP-only (blue), the IDP-only (green) and combined ABP and IDP (pink). The cloud screening thresholds were set to similar, but not identical, values as those reported in Sect. 4.2. The histogram of the number of soundings at each $TOD_{532\text{ nm}}$ is shown against the left ordinate. The distribution of CALIOP $TOD_{532\text{ nm}}$ ranges from 0.01 to 10, at which point the instrument saturates. For this particular data set, approximately half of the total number of scenes have $TOD_{532\text{ nm}} > 1$. Note that scenes with CALIOP $TOD_{532\text{ nm}} = 0$ were not used in this analysis.

The three panels show the results for all scenes (top), high clouds only (middle) and low clouds only (bottom), where high (low) is defined as cases where 95 % of the CALIOP $TOD_{532\text{ nm}}$ resides in the top 40 % (bottom 30 %) of the atmosphere. Approximately 25 % of the scenes are classified as high cloud while approximately 40 % are classified as low cloud.

For each of the cloud distribution data sets (total, high and low) the fraction of scenes identified as clear is anti-correlated with the CALIOP $TOD_{532\text{ nm}}$ for all three cloud screening combinations, as expected. That is, as the TOD increases, the fraction of scenes identified as clear decreases.

For the all-clouds case (top panel), the ABP and IDP give very similar performance when CALIOP $TOD_{532\text{ nm}} < 1$, while for $TOD_{532\text{ nm}} > 1$ the ABP and IDP each have a spike in the clear-sky rate. One hypothesis is that there's a "sweet spot" where the clouds are just thick enough to cause multiple scattering effects, which result in a path length indistinguishable from perfectly clear scenes. That is, the preprocessors think they're seeing the surface and thus mistakenly identify the scene as clear. The combined effect of the two filters is to screen out more than 80 % of the optically thick scenes.

**OCO-2 cloud
screening validation**

T. E. Taylor et al.

Title Page

Abstract

Introduction

Conclusions

References

Tables

Figures



Back

Close

Full Screen / Esc

Printer-friendly Version

Interactive Discussion



We would expect that at very low true optical depths ($OD < 0.1$), nearly all scenes would be identified by OCO-2 as clear, and conversely that OCO-2 would identify as cloudy nearly all optically thick scenes ($OD > 1$). This indeed was the case for simulations, as shown previously in Fig. 2. However, OCO-2 labels as cloudy about 50% of the scenes with $0.0 < \text{CALIOP TOD}_{532\text{ nm}} < 0.1$. This is likely due to imperfect collocation between OCO-2 and CALIOP, as the distance between observations of the two sensors can be as large as 5 km and a temporal discrepancy of about 7 min exists between the local overpass times of the two satellites. In addition, the smaller CALIOP ground footprint ($\approx 0.02\text{ km}^2$) compared to OCO-2 (≈ 0.2 to 3 km^2 , depending on latitude) means that CALIOP is more likely to observe scenes free of cloud in broken cloud fields.

To access the performance of the cloud screening algorithms as a function of cloud height, the same analysis was conducted separately on the high-cloud and low-cloud populations as demonstrated in the lower panels of Fig. 7. It is evident that both ABP and IDP cloud screeners pass as clear only a small fraction ($< 5\%$) of the high clouds with $\text{TOD}_{532\text{ nm}} > 1$. However, it fails to identify many of the scenes with thick, low clouds. Exactly the same behavior was identified for ABP in the simulation-based studies described in Sect. 2.3 and shown in Fig. 2.

To further assess scenes with relatively high optical thicknesses that are erroneously passing the OCO-2 cloud screening algorithms, a subset of the data was created to include only those soundings with $\text{CALIOP TOD}_{532\text{ nm}} > 1$. The performance of the OCO-2 cloud screening algorithms on this subset of soundings was analyzed against the effective cloud top pressures to demonstrate the behavior as a function of scattering height. The results from this analysis are shown in Fig. 8, which shows the frequency distribution and the fraction of scenes identified as clear as a function of the CALIOP normalized cloud top pressure (\bar{p}_c , defined by Eq. 2 in Sect. 3.3). The pink trace shows results for the combined ABP and IDP filters while the blue and green traces shows results utilizing the ABP-only and IDP-only, respectively.

At $\bar{p}_c \approx 0.95$ (low altitude clouds), about 60% of the scenes are identified as clear by both the ABP-only and IDP-only, while combining the two reduces the pass rate to about 40% for these low, optically thick scenes. In contrast, when $\bar{p}_c < 0.4$ (high altitude clouds), the pass rate of the combined cloud screening algorithms is less than 1%.

These results are confirmation that the ABP, which relies on PPL modification to detect cloud, is unable to discern cloud near the surface, even when the optical thickness is large. Conversely, ABP is very adept at picking out very thin scattering layers when they are located high in the atmosphere due to the strong PPL modification. Again, both of these behaviors were first identified in simulations as seen in Fig. 2, and have now been confirmed with real data. Thus taken together, the ABP and IDP filters appear to provide a very robust cloud screening approach for OCO-2 that identifies most of the optically thick clouds.

5 Conclusions

In this work, we have shown that the OCO-2 cloud screening preprocessors perform well in comparison to the MODIS-Aqua cloud mask on a large, global data set consisting of four 16-day orbit track repeat cycles in both nadir and glint viewing modes. Overall, the OCO-2 cloud screening algorithms are meeting the need for prescreening the data before further processing in the L2 X_{CO_2} retrieval algorithm. We have demonstrated that the ABP and IDP algorithms can be sufficiently tuned to pass $\approx 30\%$ of the data while maintaining overall agreement of 80–90% with the MODIS cloud mask.

The primary objective of the ABP and IDP cloud screening algorithms is to accurately identify and discard cloudy soundings that are unlikely to yield accurate estimates of X_{CO_2} . However, it is also important that these screens are not so aggressive that they eliminate clear soundings in partially cloudy regions, because this could introduce sampling biases in CO_2 source/sink inversion models. We find that the OCO-2 cloud screening algorithms are passing soundings over all portions of the globe, although higher latitudes and higher solar zenith angles tend to be problematic, due to

OCO-2 cloud screening validation

T. E. Taylor et al.

Title Page

Abstract

Introduction

Conclusions

References

Tables

Figures



Back

Close

Full Screen / Esc

Printer-friendly Version

Interactive Discussion



snow and ice covered surfaces and lower signal to noise ratios, respectively, both of which make reliable cloud identification and X_{CO_2} retrievals difficult.

We find that approximately 5 % of soundings are being identified as clear by MODIS and cloudy by OCO-2, while approximately 10 % of the soundings are identified as cloudy by MODIS and clear by OCO-2. The former disagreement type is likely due to the enhanced sensitivity of OCO-2 to atmospheric scattering as compared to MODIS, or due to the presence of aerosol (which OCO-2 sees but the MODIS cloud-mask does not), while the latter condition is partially attributed to the moderately loose OCO-2 cloud screening thresholds applied in this work. Some of both types of disagreements are likely to be caused by minor spectral, spatial and temporal mis-matches in comparing different satellite sensors.

Simulations of OCO-2 observations suggest that the ABP reliably identifies optically thin high clouds. This conclusion is confirmed by comparisons with collocated CALIOP data. In addition, we confirmed the ABP's limitation for identifying low altitude clouds, even those with total optical depths well above what can be analyzed to yield accurate X_{CO_2} retrievals. However, the combination of the ABP with the IDP reduces the number of the low, thick clouds that are being erroneously identified as clear.

Detailed studies uncovered no significant time-dependent or footprint-dependent features in the OCO-2 cloud screening algorithms. Although the operational sounding selection plan for OCO-2 is constantly evolving, it will continue to rely in part on the cloud screening results provided by the ABP and IDP, which have been shown here to be in reasonably good agreement with both MODIS and CALIOP. Finally, we note that though OCO-2 was designed primarily to measure atmospheric CO_2 , it is clear that the instrument is very sensitive to scattering in the atmosphere by clouds and aerosols, and thus future cloud and/or aerosol studies may benefit from an examination of how OCO-2's unique capabilities can contribute.

Acknowledgements. The CSU contribution to this work was supported by JPL subcontract 1439002. A portion of the research described in this paper was carried out at the Jet Propulsion

OCO-2 cloud screening validation

T. E. Taylor et al.

Title Page

Abstract

Introduction

Conclusions

References

Tables

Figures



Back

Close

Full Screen / Esc

Printer-friendly Version

Interactive Discussion



Laboratory, California Institute of Technology, under a contract with the National Aeronautics and Space Administration.

We would like to acknowledge the hard work of many individuals on the OCO-2 algorithm and data processing teams, who's efforts helped make this work possible. The list (in alphabetical order) includes (but is not limited to); Charlie Avis, Lars Chapsky, Lan Dang, Robert Granat, Richard Lee, Lukas Mandrake, James McDuffie, Vijay Natraj, Fabian Oyafuso, Vivienne Payne, Rob Rosenberg, Mike Smyth, Paul Wennberg, Debra Wunch and Jia Zong, all at JPL.

We would also like to acknowledge the contributions made by the GOSAT JAXA and NIES teams that made this research possible.

In addition we thank the computer support staff at CSU, Natalie Tourville and Michael Hiatt.

References

- Ackerman, S. A., Strabala, K. I., Menzel, W. P., Frey, R. A., Moeller, C. C., and Gumley, L. E.: Discriminating clear sky from clouds with MODIS, *J. Geophys. Res.*, 103, D07206, doi:10.1029/1998JD200032, 1998. 12674, 12677
- Ackerman, S. A., Holz, R., Frey, R., Eloranta, E., Maddux, B., and McGill, M.: Cloud detection with MODIS, Part II: validation, *J. Atmos. Ocean. Tech.*, 25, 1073–1086, doi:10.1175/2007JTECHA1053.1, 2008. 12674
- Bösch, H., Toon, G. C., Sen, B., Washenfelder, R. A., Wennberg, P. O., Buchwitz, M., de Beek, R., Burrows, J. P., Crisp, D., Christi, M., Connor, B. J., Natraj, V., and Yung, Y. L.: Space-based near-infrared CO₂ measurements: testing the orbiting carbon observatory retrieval algorithm and validation concept using SCIAMACHY observations over Park Falls, Wisconsin, *J. Geophys. Res.*, 111, D23302, doi:10.1029/2006JD007080, 2006. 12666
- Bösch, H., Baker, D., Crisp, D., and Miller, C.: Global characterization of CO₂ column retrievals from shortwave-infrared satellite observations of the Orbiting Carbon Observatory-2 mission, *Remote Sens.*, 3, 270–304, doi:10.3390/rs3020270, 2011. 12666
- Bösch, H., Brown, L., Castano, R., Christi, M., Connor, B., Crisp, D., Eldering, A., Fisher, B., Frankenberg, C., Gunson, M., Granat, R., McDuffie, J., Miller, C., Natraj, V., O'Brien, D., O'Dell, C., Osterman, G., Oyafuso, F., Payne, V., Polonsky, I., Smyth, M., Spurr, R., Thompson, D., and Toon, G.: Orbiting Carbon Observatory (OCO)-2 level 2 full physics, Algorithm Theoretical Basis Document, D-55207, 1–85, Jet Propulsion Laboratory, avail-

OCO-2 cloud screening validation

T. E. Taylor et al.

Title Page

Abstract

Introduction

Conclusions

References

Tables

Figures



Back

Close

Full Screen / Esc

Printer-friendly Version

Interactive Discussion



OCO-2 cloud screening validation

T. E. Taylor et al.

Title Page

Abstract

Introduction

Conclusions

References

Tables

Figures



Back

Close

Full Screen / Esc

Printer-friendly Version

Interactive Discussion



able at: http://disc.sci.gsfc.nasa.gov/OCO-2/documentation/oco-2-v6/OCO2_L2_ATBD.V6.pdf, last access: 20 November 2015. 12671

Butz, A., Guerlet, S., Hasekamp, O., Schepers, D., Galli, A., Aben, I., Frankenberg, C., Hartmann, J., Tran, H., Kuze, A., Aleks, G. K., Toon, G., Wunch, D., Wennberg, P., Deutscher, N., Griffith, D., Macatangay, R., Messerschmidt, J., Notholt, J., and Warneke, T.: Toward accurate CO₂ and CH₄ observations from GOSAT, *Geophys. Res. Lett.*, 38, L14812, doi:10.1029/2011GL047888, 2011. 12666

Crisp, D., Miller, C., and DeCola, P.: NASA Orbiting Carbon Observatory; measuring the column averaged carbon dioxide mole fraction from space, *J. Appl. Remote Sens.*, 2, 023508, doi:10.1117/1.2898457, 2008. 12665, 12666, 12671

Day, J. O., O'Dell, C. W., Pollock, R., Bruegge, C. J., Rider, D., Crisp, D., and Miller, C. E.: Preflight spectral calibration of the Orbiting Carbon Observatory, *IEEE T. Geosci. Remote*, 49, 2793–2801, doi:10.1109/TGRS.2011.2107745, 2011. 12671

Engelstaedter, S., Tegan, I., and Washington, R.: North African dust emissions and transport, *Earth-Sci. Rev.*, 79, 73–100, doi:10.1016/j.earscirev.2006.06.004, 2006. 12685

Frankenberg, C.: OCO-2 IMAP-DOAS preprocessor, Algorithm Theoretical Basis Document D-81519, Jet Propulsion Laboratory, available at: http://disc.sci.gsfc.nasa.gov/OCO-2/documentation/oco-2-v5/IMAP_OCO2_ATBD_prelaunch.pdf (last access: 20 November 2015), 2014. 12669

Frankenberg, C., Platt, U., and Wagner, T.: Iterative maximum a posteriori (IMAP)-DOAS for retrieval of strongly absorbing trace gases: Model studies for CH₄ and CO₂ retrieval from near infrared spectra of SCIAMACHY onboard ENVISAT, *Atmos. Chem. Phys.*, 5, 9–22, doi:10.5194/acp-5-9-2005, 2005. 12670

Frey, R. A., Ackerman, S. A., Liu, Y., Strabala, K. I., Zhang, H., Key, J. R., and Wang, X.: Cloud detection with MODIS, Part I: improvements in the MODIS cloud mask for collection 5, *J. Atmos. Ocean. Tech.*, 25, 1057–1072, doi:10.1175/2008JTECHA1052.1, 2008. 12677

Gao, B., Yang, P., Han, W., Li, R.-R., and Wiscombe, W.: An algorithm using visible and 1.38- μ m channels to retrieve cirrus cloud reflectances from aircraft and satellite data, *IEEE T. Geosci. Remote*, 40, 1659–1688, doi:10.1109/TGRS.2002.802454, 2002. 12677

Guerlet, S., Butz, A., Schepers, D., Basu, S., Hasekamp, O. P., Kuze, A., Yokota, T., Blavier, J., Deutscher, N. M., Griffith, D. W., Hase, F., Kyro, E., Morino, I., Sherlock, V., Sussmann, R., Galli, A., and Aben, I.: Impact of aerosol and thin cirrus on retrieving and validating

OCO-2 cloud screening validation

T. E. Taylor et al.

Title Page

Abstract

Introduction

Conclusions

References

Tables

Figures



Back

Close

Full Screen / Esc

Printer-friendly Version

Interactive Discussion



X_{CO_2} from GOSAT shortwave infrared measurements, *J. Geophys. Res.*, 118, 4887–4905, doi:10.1002/jgrd.50332, 2013. 12666

Hsu, N., Jeong, M.-J., Bettenhausen, C., Sayer, A., Hansell, R., Seftor, C., Huang, J., and Tsay, S.-C.: Enhanced deep blue aerosol retrieval algorithm: the second generation, *J. Geophys. Res.*, 118, 9296–9315, doi:10.1002/jgrd.50712, 2013. 12685

Kuze, A., Suto, H., Nakajima, M., and Hamazaki, T.: Thermal and near infrared sensor for carbon observation Fourier-transform spectrometer on the greenhouse gases observing satellite for greenhouse gases monitoring, *Appl. Optics*, 48, 6716–6733, 2009. 12667, 12671

L'Ecuyer, T. and Jiang, J.: Touring the atmosphere aboard the A-Train, *Phys. Today*, 63, 36–41, doi:10.1063/1.3463626, 2010. 12665, 12674

Lee, R. A. M., O'Dell, C. W., Wunch, D., Roehl, C., Osterman, G. B., Blavier, J.-F., Rosenberg, R., Chapsky, L., Frankenberg, C., Hunyadi-Lay, S. L., Fisher, B. M., Rider, D. M., Crisp, D., and Pollock, R.: Preflight spectral calibration of the Orbiting Carbon Observatory-2, in preparation, 2015. 12671

Liu, J., K., B., Lee, M., Henze, D., Bousseres, N., Brix, H., Collatz, G., Menemenlis, D., Ott, L., Pawson, S., Jones, D., and Nassar, R.: Carbon monitoring system flux estimation and attribution: impact of ACOS-GOSAT XCO₂ sampling on the inference of terrestrial biospheric sources and sinks, *Tellus B*, 66, 22486, doi:10.3402/tellusb.v66.22486, 2014. 12684

Maddux, B., Ackerman, S., and Platnick, S.: Viewing geometry dependencies in MODIS cloud products, *J. Atmos. Ocean. Tech.*, 27, 1519–1528, doi:10.1175/2010JTECHA1432.1, 2010. 12678

Merrelli, A., Bennartz, R., O'Dell, C. W., and Taylor, T. E.: Estimating bias in the OCO-2 retrieval algorithm caused by 3-D radiation scattering from unresolved boundary layer clouds, *Atmos. Meas. Tech.*, 8, 1641–1656, doi:10.5194/amt-8-1641-2015, 2015. 12678, 12683

Miller, C., Crisp, D., DeCola, P., Olsen, S., Randerson, J., Michalak, A., Alkhaled, A., Rayner, P., Jacob, D., Suntharalingam, P., Jones, D., Denning, A., Nicholls, M., Doney, S., Pawson, S., Boesch, H., Connor, B., Fung, I., O'Brien, D., Salawitch, R., Sander, S., Sen, B., Tans, P., Toon, G., Wennberg, P., Wofsy, S., Yung, Y., and Law, R.: Precision requirements for space-based X_{CO_2} data, *J. Geophys. Res.*, 112, D10314, doi:10.1029/2006JD007659, 2007. 12666, 12678

O'Brien, D. M., Polonsky, I., O'Dell, C., and Carheden, A.: Orbiting Carbon Observatory (OCO), Algorithm Theoretical Basis Document, the OCO simulator, Technical Report, Cooperative Institute for Research in the Atmosphere, Colorado State University, USA, 2009. 12670

OCO-2 cloud screening validation

T. E. Taylor et al.

Title Page

Abstract

Introduction

Conclusions

References

Tables

Figures



Back

Close

Full Screen / Esc

Printer-friendly Version

Interactive Discussion



O'Dell, C., Taylor, T. E., and Eldering, A.: OCO-2 oxygen-A Band cloud screening algorithm (ABO2), Algorithm Theoretical Basis Document, D-81520, Jet Propulsion Laboratory, available at: http://disc.sci.gsfc.nasa.gov/OCO-2/documentation/oco-2-v5/oco2_abo2_atbd_prelaunch_4.pdf (last access: 20 November 2015), 2014. 12669

O'Dell, C. W., Day, J. O., Pollock, R., Bruegge, C. J., O'Brien, D. M., Castano, R., Tkatcheva, I., Miller, C. E., and Crisp, D.: Preflight radiometric calibration of the Orbiting Carbon Observatory, *IEEE T. Geosci. Remote*, 49, 2438–2447, doi:10.1109/TGRS.2010.2090887, 2011. 12671

O'Dell, C. W., Connor, B., Bösch, H., O'Brien, D., Frankenberg, C., Castano, R., Christi, M., Eldering, D., Fisher, B., Gunson, M., McDuffie, J., Miller, C. E., Natraj, V., Oyafuso, F., Polonsky, I., Smyth, M., Taylor, T., Toon, G. C., Wennberg, P. O., and Wunch, D.: The ACOS CO₂ retrieval algorithm – Part 1: description and validation against synthetic observations, *Atmos. Meas. Tech.*, 5, 99–121, doi:10.5194/amt-5-99-2012, 2012. 12666, 12669, 12670, 12671, 12673, 12674

Rodgers, C. D.: *Inverse Methods For Atmospheric Sounding: Theory and Practice*, World Scientific Publishing, Singapore, 2000. 12668

Rosenberg, R., Maxwell, S., Johnson, B. C., Chapsky, L., Lee, R., and Pollock, R.: Preflight radiometric calibration of the Orbiting Carbon Observatory-2, in preparation, 2015. 12671

Savtchenko, A., Kummerer, A., Smith, P., Gopalan, A., Kempler, S., and Leptoukh, G.: A-Train data depot – bringing atmospheric measurements together, *IEEE T. Geosci. Remote*, 46, 2788–2795, 2008. 12676

Seidel, F. C. and Popp, C.: Critical surface albedo and its implications to aerosol remote sensing, *Atmos. Meas. Tech.*, 5, 1653–1665, doi:10.5194/amt-5-1653-2012, 2012. 12671

Stephens, G. L., Vane, D. G., Boain, R. J., Mace, G. G., Sassen, K., Wang, Z., Illingworth, A. J., O'Connor, E. J., Rossow, W. B., Durden, S. L., Miller, S. D., Austin, R. T., Benedetti, A., Mitrescu, C.: The Cloudsat mission and the A-train: a new dimension of space-based observations of clouds and precipitation, *B. Am. Meteorol. Soc.*, December, 1771–1790, 2002. 12665

Taylor, T. E. and O'Brien, D. M.: A neural network cloud screening algorithm, Part I: a synthetic case over land surfaces using micro-windows in O₂ and CO₂ near infrared absorption bands with nadir viewing, *J. Appl. Remote Sens.*, 3, 033548, doi:10.1117/1.3239515, 2009. 12671

Taylor, T. E., O'Dell, C. W., O'Brien, D. M., Kikuchi, N., Yokota, T., Nakajima, T. Y., Ishida, H., Crisp, D., and Nakajima, T.: Comparison of cloud-screening methods applied to GOSAT near-

OCO-2 cloud screening validation

T. E. Taylor et al.

Title Page

Abstract

Introduction

Conclusions

References

Tables

Figures



Back

Close

Full Screen / Esc

Printer-friendly Version

Interactive Discussion



infrared spectra, IEEE T. Geosci. Remote, 50, 295–309, doi:10.1109/TGRS.2011.2160270, 2012. 12667, 12669, 12673, 12677, 12680

Vaughn, M. A., Powell, K. A., Kuehn, R. E., Young, S. A., Winker, D. M., Hostetler, C. A., Hunt, W. H., Liu, Z., McGill, M. J., and Getzewich, B. J.: Fully automated detection of cloud and aerosol layers in the CALIPSO lidar measurements, J. Atmos. Ocean. Tech., 26, 2034–2050, doi:10.1175/2009JTECHA1228.1, 2009. 12675

Winker, D. M., Hunt, W. H., and McGill, M. J.: Initial performance assesement of CALIOP, Geophys. Res. Lett., 34, L19803, doi:10.1029/2007GL030135, 2007. 12675

Winker, D. M., Pelon, J., Jr, J. C., Ackerman, S., Charlson, R., Colarco, P., Flamant, P., Fu, Q., Hoff, R., Kittaka, C., Kubar, T., Treut, H. L., McCormick, M., Megie, G., Poole, L., Powell, K., Trepte, C., Vaughan, M., and Wielicki, B.: The CALIPSO mission, B. Am. Meteorol. Soc., 91, 1211–1229, doi:10.1175/2010BAMS3009.1, 2010. 12665

Wunch, D., Toon, G. C., Wennberg, P. O., Wofsy, S. C., Stephens, B. B., Fischer, M. L., Uchino, O., Abshire, J. B., Bernath, P., Biraud, S. C., Blavier, J.-F. L., Boone, C., Bowman, K. P., Browell, E. V., Campos, T., Connor, B. J., Daube, B. C., Deutscher, N. M., Diao, M., Elkins, J. W., Gerbig, C., Gottlieb, E., Griffith, D. W. T., Hurst, D. F., Jiménez, R., Keppel-Aleks, G., Kort, E. A., Macatangay, R., Machida, T., Matsueda, H., Moore, F., Morino, I., Park, S., Robinson, J., Roehl, C. M., Sawa, Y., Sherlock, V., Sweeney, C., Tanaka, T., and Zondlo, M. A.: Calibration of the Total Carbon Column Observing Network using aircraft profile data, Atmos. Meas. Tech., 3, 1351–1362, doi:10.5194/amt-3-1351-2010, 2010. 12667

Wunch, D., Wennberg, P. O., Toon, G. C., Connor, B. J., Fisher, B., Osterman, G. B., Frankenberg, C., Mandrake, L., O'Dell, C., Ahonen, P., Biraud, S. C., Castano, R., Cressie, N., Crisp, D., Deutscher, N. M., Eldering, A., Fisher, M. L., Griffith, D. W. T., Gunson, M., Heikkinen, P., Keppel-Aleks, G., Kyrö, E., Lindenmaier, R., Macatangay, R., Mendonca, J., Messerschmidt, J., Miller, C. E., Morino, I., Notholt, J., Oyafuso, F. A., Rettinger, M., Robinson, J., Roehl, C. M., Salawitch, R. J., Sherlock, V., Strong, K., Sussmann, R., Tanaka, T., Thompson, D. R., Uchino, O., Warneke, T., and Wofsy, S. C.: A method for evaluating bias in global measurements of CO₂ total columns from space, Atmos. Chem. Phys., 11, 12317–12337, doi:10.5194/acp-11-12317-2011, 2011. 12667

Wunch, D., Osterman, G., Fisher, B., Naylor, B., Roehl, C., O'Dell, C., Viatte, C., Eldering, A., and Wennberg, P.: Target-mode measurements from the Orbiting Carbon Observatory (OCO-2), in preparation, 2015. 12667

Xiong, X., Chiang, K., Sun, J., Barnes, W., Guenther, B., and Salomonson, V.: NASA EOS terra and aqua MODIS on-orbit performance, *Adv. Space Res.*, 43, 413–422, doi:10.1016/j.asr.2008.04.008, 2009. 12665

5 Yoshida, Y., Eguchi, N., Ota, Y., Kikuchi, N., Nobuta, K., Aoki, T., and Yokota, T.: CO₂ and CH₄ column amounts retrieval from GOSAT TANSO-FTS SWIR, Algorithm Theoretical Basis Document, NIES GOSAT Project, 2010. 12671

10 Yoshida, Y., Ota, Y., Eguchi, N., Kikuchi, N., Nobuta, K., Tran, H., Morino, I., and Yokota, T.: Retrieval algorithm for CO₂ and CH₄ column abundances from short-wavelength infrared spectral observations by the Greenhouse gases observing satellite, *Atmos. Meas. Tech.*, 4, 717–734, doi:10.5194/amt-4-717-2011, 2011. 12667

OCO-2 cloud screening validation

T. E. Taylor et al.

Title Page

Abstract

Introduction

Conclusions

References

Tables

Figures



Back

Close

Full Screen / Esc

Printer-friendly Version

Interactive Discussion



OCO-2 cloud screening validation

T. E. Taylor et al.

Table 1. Settings of the ABP and IDP cloud screening thresholds used for the OCO-2 and GOSAT simulated data sets discussed in Sect. 2.3 and the real OCO-2 data used in Sect. 4.2.

	OCO-2 simulated	GOSAT simulated	OCO-2 real nadir-land	OCO-2 real glint-land	OCO-2 real glint-water
$\Delta p_{s,\text{cld}}$ (hPa)	30.0	10.0	20.0	20.0	75.0
χ^2 scale factor	5.0	2.0	5.0	5.0	5.0
R_{CO_2} center	1.0	1.0	0.99	0.99	0.98
R_{CO_2} halfwidth	± 0.022	± 0.015	± 0.04	± 0.04	± 0.045
$R_{\text{H}_2\text{O}}$ center	1.02	1.02	0.99	0.99	0.99
$R_{\text{H}_2\text{O}}$ halfwidth	± 0.10	± 0.10	± 0.2	± 0.2	± 0.12

Title Page

Abstract

Introduction

Conclusions

References

Tables

Figures

◀

▶

◀

▶

Back

Close

Full Screen / Esc

Printer-friendly Version

Interactive Discussion



OCO-2 cloud screening validation

T. E. Taylor et al.

Title Page

Abstract

Introduction

Conclusions

References

Tables

Figures



Back

Close

Full Screen / Esc

Printer-friendly Version

Interactive Discussion



Table 2. Summary of OCO-2 B7 data set to which MODIS and CALIOP collocation were performed. Note that, each OCO-2 frame contains 8 footprints, i.e., 8 soundings.

Index	View Mode	Start Date	End Date	NumDays	NumOrbits	NumFrames
1	Glint	01 Dec 2014	12 Dec 2014	12	153	1 347 996
2	Nadir	13 Dec 2014	28 Dec 2014	16	228	1 857 425
3	Glint	04 Apr 2015	18 Apr 2015	15	198	1 650 609
4	Nadir	11 May 2015	21 May 2015	11	147	1 128 696

OCO-2 cloud screening validation

T. E. Taylor et al.

Table 3. Contingency tables for the comparison of the OCO-2 cloud screening preprocessors to MODIS cloud mask. Results are shown for the three main viewing scenarios for both the winter (December) and spring (April–May) data sets.

Viewing	Reference clear atmospheres				Reference cloudy atmospheres				Throughput	Agreement	PPV		
	Total cases	Predicted clear		Predicted cloudy		Total cases	Predicted clear					Predicted cloudy	
		N_{TP}	TPR	N_{FN}	FNR		N_{FP}	FPR					N_{TN}
Winter (Dec)													
Nadir-land	95 800	71 927	75.1 %	23 873	24.9 %	558 988	83 006	14.8 %	475 982	85.2 %	23.7 %	83.7 %	46.4 %
Glint-land	68 531	49 585	72.4 %	18 946	27.6 %	308 045	57 035	18.5 %	251 010	81.5 %	28.3 %	79.8 %	46.5 %
Glint-water	140 732	110 450	78.5 %	30 282	21.5 %	686 024	72 816	10.6 %	613 208	89.4 %	22.2 %	87.5 %	60.3 %
Spring (Apr–May)													
Nadir-land	78 378	51 401	65.6 %	26 977	34.4 %	228 610	25 906	11.3 %	202 704	88.7 %	25.2 %	82.8 %	66.5 %
Glint-land	87 096	65 027	74.7 %	22 069	25.3 %	356 946	71 232	20.0 %	285 714	80.0 %	30.7 %	79.0 %	47.7 %
Glint-water	200 970	144 083	71.7 %	56 887	28.3 %	955 550	82 524	8.6 %	873 026	91.4 %	19.6 %	87.9 %	63.6 %

[Title Page](#)
[Abstract](#)
[Introduction](#)
[Conclusions](#)
[References](#)
[Tables](#)
[Figures](#)

[Back](#)
[Close](#)
[Full Screen / Esc](#)
[Printer-friendly Version](#)
[Interactive Discussion](#)

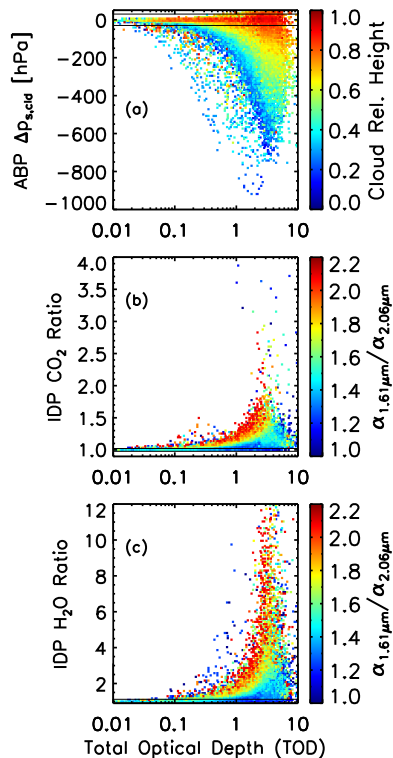



Figure 1. Scatter plots of **(a)** $\Delta p_{s,cloud}$, **(b)** CO_2 ratio (R_{CO_2}) and **(c)** H_2O ratio (R_{H_2O}) vs. the total optical depth for OCO-2 simulations over land for the month of June. In panel **(a)**, each sounding is colored according to the cloud relative height (see text), while in panels **(b)** and **(c)**, each sounding is colored according to the ratio of the 1.6 to the 2.0 μm retrieved effective albedo. The horizontal black lines show the selected threshold values presented in Table 1.

OCO-2 cloud screening validation

T. E. Taylor et al.

Title Page	
Abstract	Introduction
Conclusions	References
Tables	Figures
◀	▶
◀	▶
Back	Close
Full Screen / Esc	
Printer-friendly Version	
Interactive Discussion	



OCO-2 cloud screening validation

T. E. Taylor et al.

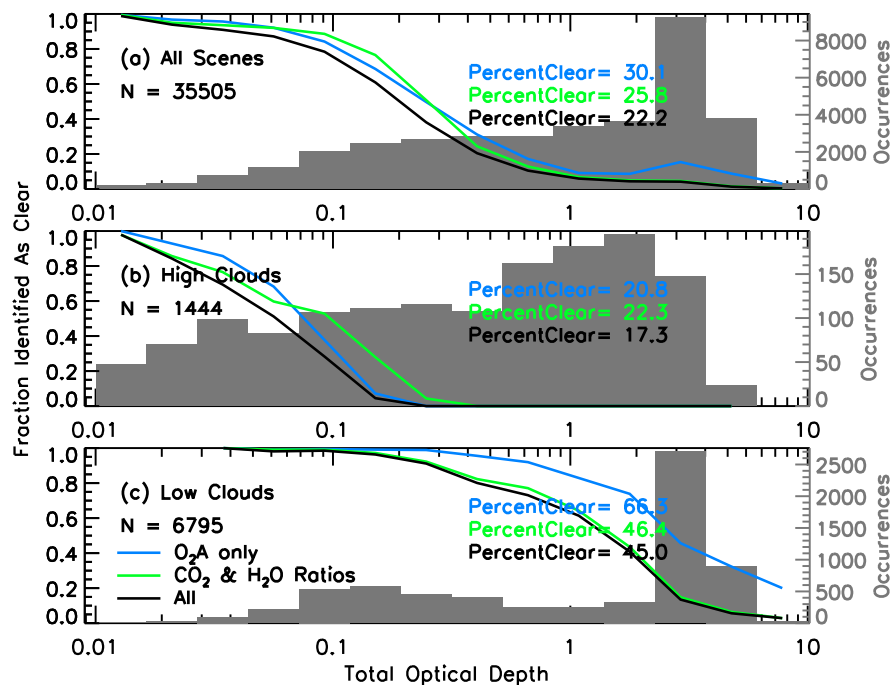


Figure 2. The fraction of simulated OCO-2 soundings identified as clear by the ABP screen alone (blue), by the R_{CO_2} plus $R_{\text{H}_2\text{O}}$ (green), and by all three filters combined (black), plotted as a function of the total cloud plus aerosol optical depth (TOD) at 760 nm. The frequency histogram of the TOD is plotted in gray against the right ordinate. Panel (a) shows all cloud cases, while panel (b) shows only those scenes where 95% of the OD resides in the upper 40% of the atmosphere (i.e., high clouds) and panel (c) shows cases where 95% of the OD resides in the lowest 30% of the atmosphere (i.e., low clouds layers). Only the June nadir-land data is shown.

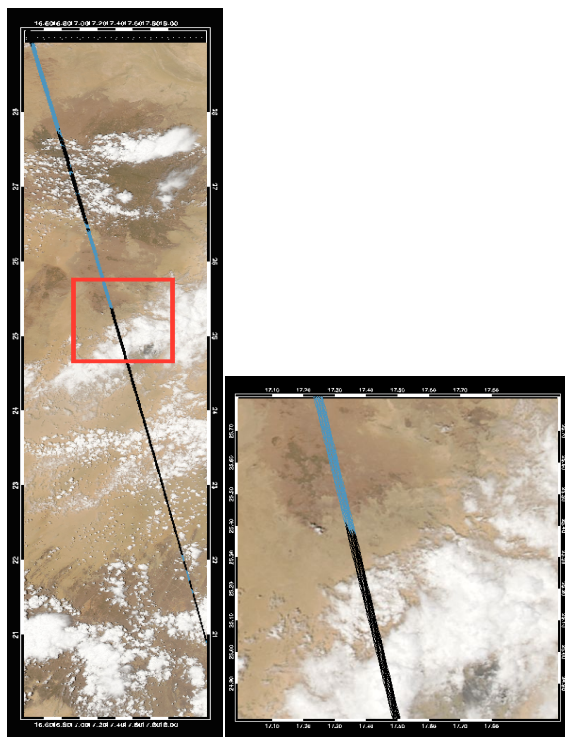


Figure 3. Demonstration of the collocation of MODIS to OCO-2 for orbit number 5930 (13 August 2015) in nadir viewing mode over central Africa. Panel (a) shows data spanning 20°–29° N latitude and 16.4–18.5° E longitude (450 frames in \approx 150 s). Panel (b) shows a zoomed in portion of the granule (the red box in panel (a)) to reveal the relative width of an OCO-2 frame, which is comprised of 8 cross-track footprints, each approximately 2 km by 2 km, in relation to a typical scattered cloud deck observed by MODIS. The pixels are colored black (cloudy) or blue (clear) based on the combined ABP and IDP cloud screening algorithm results.

OCO-2 cloud screening validation

T. E. Taylor et al.

Title Page	
Abstract	Introduction
Conclusions	References
Tables	Figures
◀	▶
◀	▶
Back	Close
Full Screen / Esc	
Printer-friendly Version	
Interactive Discussion	



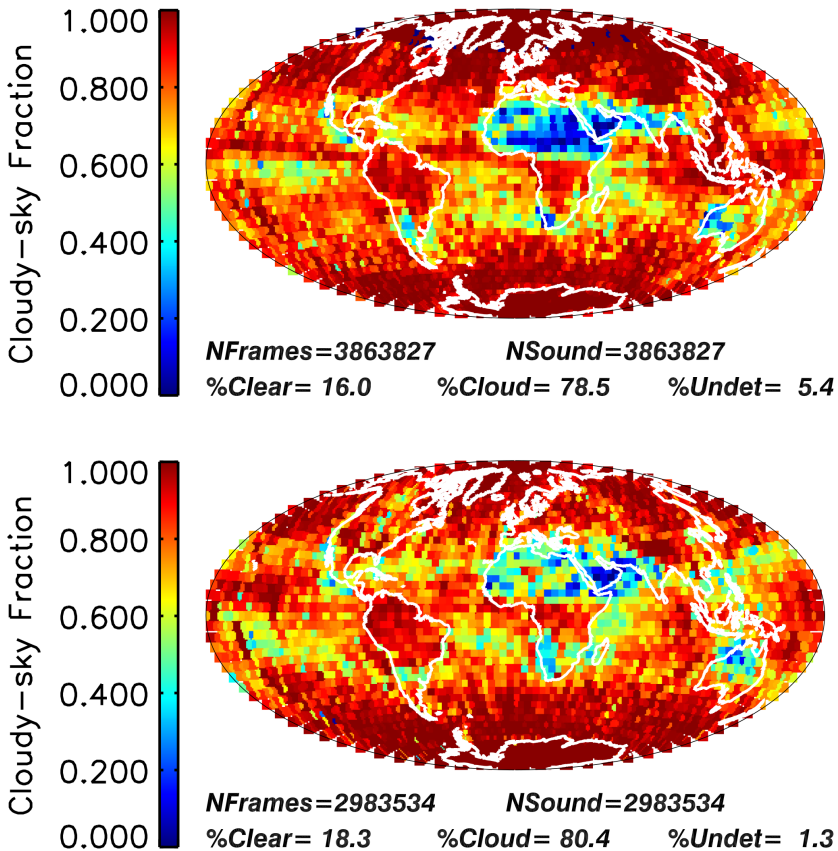


Figure 4. Cloudy-sky fraction calculated from the MODIS/OCO-2 collocated cloud mask described in Sect. 3.2 for the December combined glint and nadir data sets (top) and the April-May data (bottom). Data is binned in 4° by 4° lat/lon boxes.

OCO-2 cloud screening validation

T. E. Taylor et al.

Title Page	
Abstract	Introduction
Conclusions	References
Tables	Figures
◀	▶
◀	▶
Back	Close
Full Screen / Esc	
Printer-friendly Version	
Interactive Discussion	



OCO-2 cloud screening validation

T. E. Taylor et al.

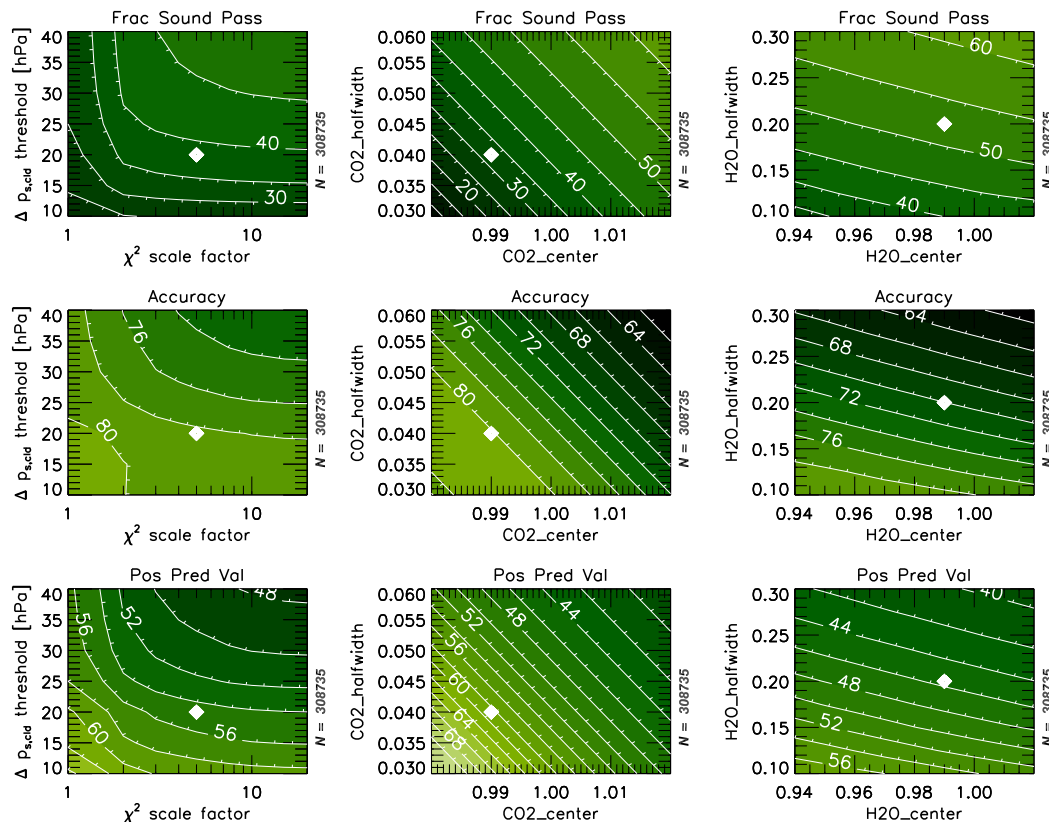


Figure 5. Contour plots of the May nadir-land data showing the fraction of soundings passing (top row), agreement (middle row) and positive predictive value (bottom row) for variations in the ABP $\Delta p_{\text{s,clد}}$ vs. χ^2 scale factor (left column), IDP R_{CO_2} (middle column) and $R_{\text{H}_2\text{O}}$ (right column). Contours are drawn at increments of 5% for the fraction passing, and 2% for the agreement and positive predictive values. The white diamond represents the threshold settings adopted for the analysis presented in this work.

OCO-2 cloud screening validation

T. E. Taylor et al.

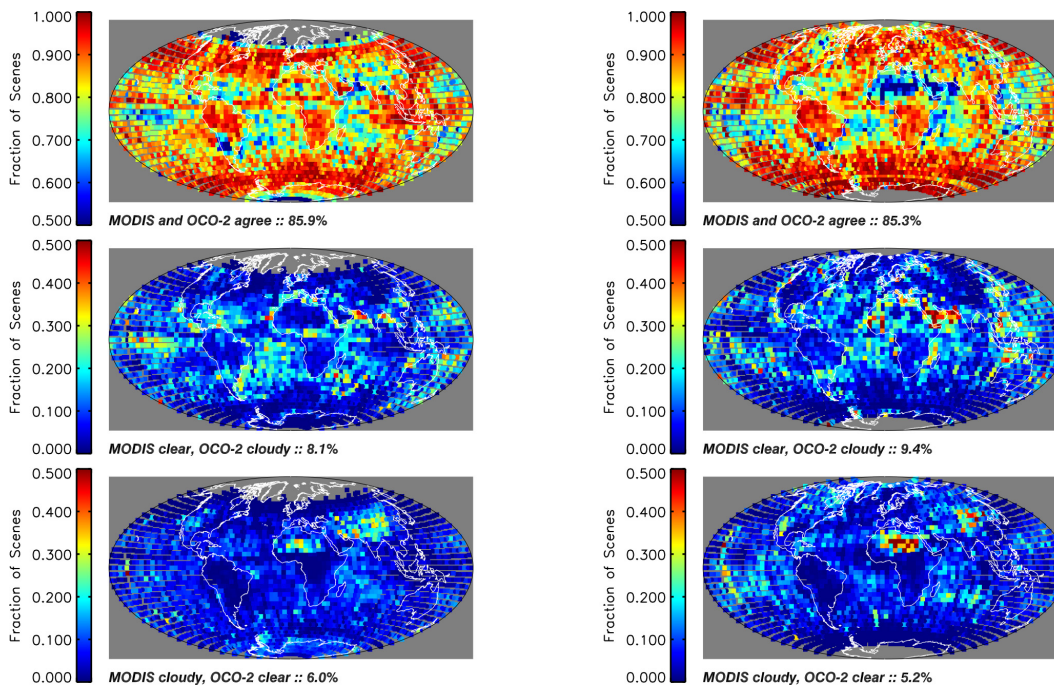


Figure 6. Combined glint and nadir gridded contingency table data for December (left column) and April–May (right column). Data are binned on a 4° by 4° lat/lon grid. Scenes for which MODIS and OCO-2 cloud screenings agree are shown in the top panel, while the two types of disagreement – MODIS clear, OCO-2 cloudy and vice versa – are shown in the two lower rows, respectively. The color scales span the range 50–100 % for the “agree” panels and 0–50 % for the “disagree” panels.

Title Page

Abstract

Introduction

Conclusions

References

Tables

Figures

◀

▶

◀

▶

Back

Close

Full Screen / Esc

Printer-friendly Version

Interactive Discussion



OCO-2 cloud screening validation

T. E. Taylor et al.

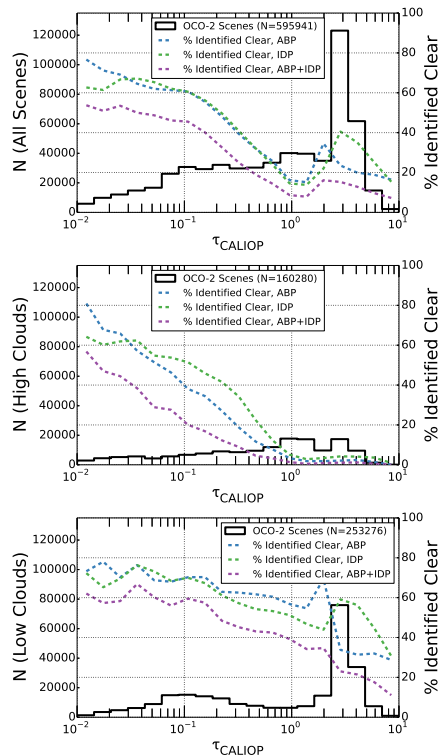


Figure 7. Comparison of OCO-2 cloud screening to CALIOP optical depth measurements for collocated soundings. Histograms of the number of OCO-2 soundings are shown as black solid trace against the left ordinate, and percent of soundings identified as clear vs. the CALIPSO optical depth are shown against the right ordinate. Only the May nadir-land viewing data was used. Each panel shows results for the combined ABP + IDP (pink), the ABP only (blue) and IDP only (green). The top panel uses the total number of scenes, while the middle and lower panel use only the high-cloud and low-cloud scenes, respectively, where high and low clouds are defined in the text.

Title Page

Abstract

Introduction

Conclusions

References

Tables

Figures



Back

Close

Full Screen / Esc

Printer-friendly Version

Interactive Discussion



OCO-2 cloud screening validation

T. E. Taylor et al.

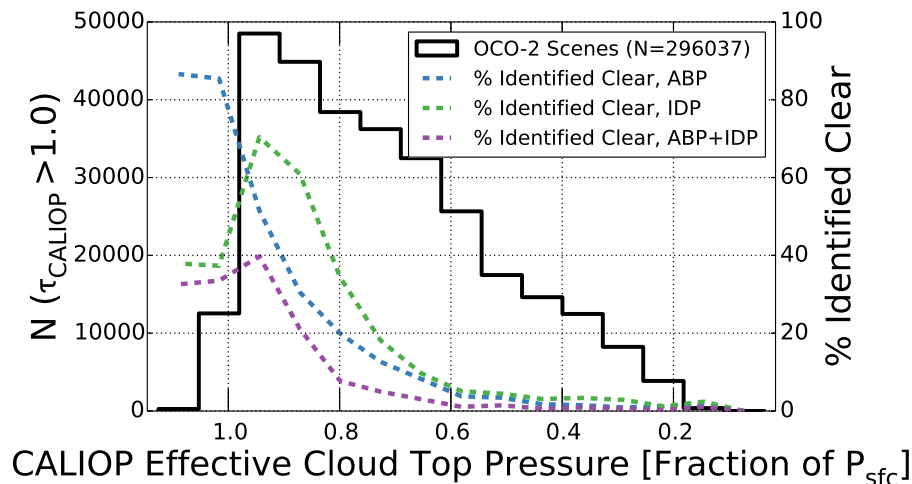


Figure 8. Histogram of the number of OCO-2 soundings with CALIOP optical depth > 1 (solid trace against the left ordinate) and percent of soundings (dotted traces against the right ordinate) identified as clear vs. the CALIOP effective cloud top pressure (defined in the text) for the May nadir-land viewing data. The results for the combined ABP+IDP are shown in pink, the ABP only in blue and IDP only in green.

Title Page

Abstract

Introduction

Conclusions

References

Tables

Figures



Back

Close

Full Screen / Esc

Printer-friendly Version

Interactive Discussion

