

Abstract

Since the launch of the Greenhouse Gases Observing Satellite (GOSAT) in 2009, retrieval algorithms designed to infer the column-averaged dry-air mole fraction of carbon dioxide (X_{CO_2}) from hyperspectral near-infrared observations of reflected sunlight have been greatly improved. They now generally include the scattering effects of clouds and aerosols, as early work found that absorption-only retrievals, which neglected these effects, often incurred unacceptably large errors, even for scenes with optically thin cloud or aerosol layers. However, these “full-physics” retrievals tend to be computationally expensive and may incur biases from trying to deduce the properties of clouds and aerosols when there are none present. Additionally, algorithms are now available that can quickly and effectively identify and remove most scenes in which cloud or aerosol scattering plays a significant role.

In this work, we test the hypothesis that non-scattering, or “clear-sky”, retrievals may perform as well as full-physics retrievals for sufficiently clear scenes. Clear-sky retrievals could potentially avoid errors and biases brought about by trying to infer properties of clouds and aerosols when none are present. Clear-sky retrievals are also desirable because they are orders of magnitude faster than full-physics retrievals. Here we use a simplified version of the Atmospheric Carbon Observations from Space (ACOS) X_{CO_2} retrieval algorithm that does not include the scattering and absorption effects of clouds or aerosols. It was found that for simulated Orbiting Carbon Observatory-2 (OCO-2) measurements, the clear-sky retrieval had errors comparable to those of the full-physics retrieval. For real GOSAT data, the clear-sky retrieval had nearly indistinguishable error characteristics over land, but roughly 30–60 % larger errors over ocean, depending on filtration level, compared to the full-physics retrieval. In general, the clear-sky retrieval had X_{CO_2} root-mean-square (RMS) errors of less than 2.0 ppm when adequately filtered through the use of the Data Ordering through Genetic Optimization (DOGO) system. These results imply that non-scattering X_{CO_2} retrievals are potentially much more accurate than previous literature suggests, when employing fil-

Clear-sky carbon dioxide satellite retrievals

R. R. Nelson et al.

Title Page

Abstract

Introduction

Conclusions

References

Tables

Figures



Back

Close

Full Screen / Esc

Printer-friendly Version

Interactive Discussion



tering methods to remove measurements in which scattering can cause significant errors. Additionally, the computational benefits of non-scattering retrievals means they may be useful for certain applications that require large amounts of data but have less stringent error requirements.

1 Introduction

Recently, space-based instruments such as the Greenhouse Gases Observing Satellite (GOSAT; Yokota et al., 2009) and the Orbiting Carbon Observatory-2 (OCO-2; Crisp et al., 2008) have been launched with the goal of providing accurate global measurements of greenhouse gas concentrations, including carbon dioxide (CO₂). Only approximately half of the anthropogenically emitted CO₂ stays in the atmosphere. The remaining molecules are absorbed by the land and ocean, but where this absorption takes place is still highly uncertain, especially over land surfaces (Le Quéré et al., 2009). Carbon flux models, designed to answer important questions about Earth's carbon sources and sinks and their interaction with the atmosphere, are heavily dependent on the density and quality of CO₂ measurements (Rayner and O'Brien, 2001; Baker et al., 2010; Chevallier et al., 2007, 2009). Global coverage of CO₂ measurements will improve the accuracy of their results, but only if the space-based measurements are of sufficiently high accuracy themselves. Specifically, it has been shown that a precision of better than about 0.5 % (~ 2 ppm for CO₂) for space-based measurements is needed to gain more information about the carbon cycle compared to only having access to ground-based measurements (Miller et al., 2007). In terms of a bias between the measured CO₂ and the true amount present in the atmosphere, even a regional bias of a few tenths of a ppm may be detrimental to carbon flux models (Chevallier et al., 2007; Basu et al., 2013). Thus, it is critically important to minimize errors and biases in satellite measurements of CO₂ in order to be able to correctly answer questions about the carbon cycle.

Clear-sky carbon dioxide satellite retrievals

R. R. Nelson et al.

Title Page

Abstract

Introduction

Conclusions

References

Tables

Figures



Back

Close

Full Screen / Esc

Printer-friendly Version

Interactive Discussion



Clear-sky carbon dioxide satellite retrievals

R. R. Nelson et al.

Title Page

Abstract

Introduction

Conclusions

References

Tables

Figures



Back

Close

Full Screen / Esc

Printer-friendly Version

Interactive Discussion



When retrieving the column-averaged dry-air mole fraction of carbon dioxide, or X_{CO_2} , from space-based instruments, one of the primary issues is the presence of clouds and aerosols. These contaminants can introduce large errors into a retrieval because they tend to modify the light path in ways that are difficult to quantify. In order to accurately measure the number of molecules of CO_2 in the column of air, the length of the light path must be known. If clouds and aerosols are present they can scatter the reflected sunlight in multiple directions, which can drastically alter the length of the light path seen by the sensor and result in significant errors when calculating X_{CO_2} . Neglecting scattering when measuring scenes containing clouds and aerosols can lead to substantial errors in X_{CO_2} . These errors are often in excess of 1% (~ 4 ppm of CO_2) and can be tens of ppm for scenes with thick cloud or aerosol layers (O'Brien and Rayner, 2002; Aben et al., 2007; Butz et al., 2009).

A common method used to avoid these large X_{CO_2} errors caused by light path modification is to parameterize clouds and aerosols explicitly within the X_{CO_2} retrieval. This often includes adding one or more scattering particle types to the retrieval along with variables that describe their optical and/or physical properties (e.g. optical depth, height of scattering layer, single scatter albedo) (Butz et al., 2009; Yokota et al., 2009; Crisp et al., 2010; Reuter et al., 2013; Parker et al., 2011). These particle types and corresponding properties are intended to represent typical clouds and aerosols found in the atmosphere. However, adding cloud and aerosol parameters to the retrieval algorithm can result in new issues such as creating an under-constrained problem or inducing nonlinearity in the forward model (Nelson, 2015). Further, it has been shown that these “full-physics” retrievals may incur biases from attempting to account for clouds and aerosols when none are present (O'Dell et al., 2012). For ideal, extremely clear scenes, this becomes an issue because the addition of a cloud and aerosol parameterization may be detrimental rather than beneficial. Additionally, a comparison of retrieved full-physics optical depths from build 3.4 (B3.4) of the NASA Atmospheric CO_2 Observations from Space (ACOS) X_{CO_2} retrieval algorithm (O'Dell et al., 2012; Crisp et al., 2010) to optical depths measured from the highly accurate AEROSOL ROBOTIC

NETwork (AERONET; Holben et al., 1998), shown in Fig. 1, revealed that the aerosol optical depths retrieved by the full-physics retrieval were not well correlated with the AERONET measurement for a particular scene.

The aforementioned problems associated with the full-physics retrieval algorithm motivated a study of a simplified non-scattering, or “clear-sky”, retrieval to test the hypotheses that it could provide comparably accurate X_{CO_2} measurements, given appropriate filtering of scenes contaminated by clouds and aerosols. These clear-sky retrievals are simple and highly linear because they assume no scattering or absorption effects caused by clouds or aerosols. Thus, clear-sky retrievals may avoid introducing unwanted biases when clouds and aerosols are not present. Recent work by Butz et al. (2013) has demonstrated that, for simulated measurements over ocean, a clear-sky retrieval can theoretically be used when scenes containing significant light path perturbations are removed. Correspondingly, this approach is now used in the operational RemoTeC retrieval (Guerlet et al., 2013; Butz et al., 2009).

Clear-sky retrievals are also desirable because of their high computational efficiency relative to full-physics retrievals. This is primarily because of the computational expense associated with calculating scattering from clouds and aerosols. The current operational ACOS algorithm takes roughly 10 min per measurement and OCO-2 collects about 10^6 measurements per day. This restricts the number of measurements able to be fully processed. The use of a clear-sky retrieval would thus, with current computational limits, allow for approximately one to two orders of magnitude more data to be processed. Additionally, the use of clear-sky retrievals would make it possible to perform repeated tests on large sets of data in significantly less time than if full-physics retrievals were used.

We begin by testing our hypothesis on simulated OCO-2 measurements then extend our analysis to real GOSAT measurements. We use various pre-filtering techniques to remove scenes obviously containing clouds and aerosols and employ the Data Ordering through Genetic Optimization (DOGO) system (Mandrake et al., 2013; Mandrake, 2015) to filter out additional contaminated measurements and improve the quality of

Clear-sky carbon dioxide satellite retrievals

R. R. Nelson et al.

[Title Page](#)[Abstract](#)[Introduction](#)[Conclusions](#)[References](#)[Tables](#)[Figures](#)[Back](#)[Close](#)[Full Screen / Esc](#)[Printer-friendly Version](#)[Interactive Discussion](#)

Clear-sky carbon dioxide satellite retrievals

R. R. Nelson et al.

[Title Page](#)[Abstract](#)[Introduction](#)[Conclusions](#)[References](#)[Tables](#)[Figures](#)[Back](#)[Close](#)[Full Screen / Esc](#)[Printer-friendly Version](#)[Interactive Discussion](#)

Pathfinder Satellite Observations (CALIPSO; Winker et al., 2009), which currently flies in approximately the same polar orbit as OCO-2 as part of the Afternoon-Train (L'Ecuyer and Jiang, 2010). Land surfaces included albedos and bi-directional reflectance distribution functions (BRDF) from the Moderate-resolution Imaging Spectroradiometer (MODIS), while ocean surfaces were modeled as specular reflectors (Cox and Munk, 1954) with a foam component based on wind speed taken from ECMWF.

The GOSAT dataset contained retrievals on 25 000 real measurements made from April 2009 to December 2012. We included both ocean and land scenes and attempted to represent the majority of surface types across the globe without being regionally biased. Measurements were only included in the dataset if they had a corresponding X_{CO_2} validation source (see Sect. 4.1).

4 Methodology

In this section we discuss methods of characterizing the X_{CO_2} errors in the retrievals, the pre-filtering used to initially remove heavily contaminated measurements, and post-filtering through the use of the DOGO system to further improve the quality of the dataset by removing additional contaminated scenes.

4.1 X_{CO_2} validation sources

To evaluate the accuracy of the X_{CO_2} retrievals, a “true” X_{CO_2} value was needed. For the OCO-2 retrievals, the truth was known because the measurements were synthetically created. For the GOSAT retrievals, we considered the truth to be either a Total Carbon Column Observing Network (TCCON) measurement (Wunch et al., 2011a) co-located in time and space using the technique described in Guerlet et al. (2013) or the average of seven CO_2 models that assimilate ground-based and aircraft CO_2 measurements and were required to agree within 1.0 ppm for a given GOSAT measurement location and time. This ensured we had sufficient ocean validation because TCCON stations

Clear-sky carbon dioxide satellite retrievals

R. R. Nelson et al.

[Title Page](#)[Abstract](#)[Introduction](#)[Conclusions](#)[References](#)[Tables](#)[Figures](#)[Back](#)[Close](#)[Full Screen / Esc](#)[Printer-friendly Version](#)[Interactive Discussion](#)

ror while two rules selects the best combination of two parameters in reducing the error. A larger number of rules results in a greater reduction in error for a given throughput, but typically only two to five rules are needed to maximize this reduction (Mandrake et al., 2013). In this study we used four rules and found that increasing the number of rules did not further reduce errors. DOGO was run separately for both clear-sky and full-physics retrievals as well as for land and ocean surfaces because it was hypothesized that different filtering parameters might be selected for each retrieval and surface type combination.

5 X_{CO_2} retrieval comparison

In the previous section we described our use of pre-filtering with the ABP and IDP and post-filtering with DOGO to produce a dataset with biases and outliers minimized to the greatest extent possible. Here we apply and evaluate our technique and examine the performance of the clear-sky X_{CO_2} retrieval compared to the full-physics X_{CO_2} retrieval for simulated OCO-2 and real GOSAT data. We evaluate the effectiveness of DOGO at reducing RMS errors, investigate the impact of cloud and aerosol optical depths on the OCO-2 simulations, and examine regional biases in the datasets by binning retrievals into the standard Atmospheric Tracer Transport Model Intercomparison Project-3 (TransCom-3) regions (Gurney et al., 2003).

5.1 Summary of OCO-2 error statistics

We begin by evaluating the performance of the clear-sky retrieval on OCO-2 simulations. Figure 4 demonstrates the effectiveness of DOGO at reducing X_{CO_2} RMS errors as a function of throughput. The initial reduction in error at high throughputs is dramatic, as the algorithm is easily able to identify and remove highly contaminated scenes. All datasets begin to plateau at approximately 50–80 % throughput as DOGO has already removed the obviously contaminated scenes and is now selecting the best of what re-

Clear-sky carbon dioxide satellite retrievals

R. R. Nelson et al.

[Title Page](#)[Abstract](#)[Introduction](#)[Conclusions](#)[References](#)[Tables](#)[Figures](#)[Back](#)[Close](#)[Full Screen / Esc](#)[Printer-friendly Version](#)[Interactive Discussion](#)

aerosol layers as well as their interaction with the surface. However, the X_{CO_2} RMS errors become more comparable at lower throughputs, with the clear-sky retrieval error coming within a tenth of a ppm of the full-physics retrieval error at a throughput of 30 %. This is consistent with our hypothesis that when scenes contaminated by clouds or aerosols are removed, the clear-sky retrieval can perform as well as the full-physics retrieval. However, to demonstrate this explicitly, we must show that DOGO is indeed filtering out those scenes containing appreciable amounts of clouds and aerosols.

Because we know the true profiles of clouds and aerosols used to create these simulated OCO-2 measurements, this is straightforward. Figure 5 shows the binned X_{CO_2} RMS error vs. the true total optical depth (the sum of the true aerosol, ice cloud, and water cloud optical depths from CALIPSO, used to create the synthetic measurements) for clear-sky retrievals (left panel) and full-physics retrievals (right panel) over ocean. Yellow corresponds to 100 % throughput, green to 80 % throughput, and blue to 30 % throughput. At 100 % throughput, there are a significant number of thick ($\tau > 1.0$) cloud or aerosol scenes present, along with a secondary peak of thinner cloud or aerosol scenes. These thick scenes are primarily water clouds near the surface that the ABP was unable to identify and remove. In general, the 100, 80, and 30 % throughput X_{CO_2} RMS errors for clear-sky and full-physics retrievals over ocean are nearly equivalent, which agrees with our analysis of the ocean retrievals plotted in Fig. 4. For high optical depth scenes at 100 % throughput, the RMS error of the data is large (over 8 ppm for both retrieval types). This indicates that, as hypothesized, both retrieval types have large errors for scenes containing thick cloud or aerosol layers. Going from 100 % throughput (yellow) to 80 % throughput (green), DOGO greatly reduces the number of these high optical depth scenes, which corresponds to the steep initial decline of the ocean retrieval RMS errors in Fig. 4. This is impressive because, as was explained in Sect. 4.3, DOGO is not allowed to use the true optical depth as a filter, indicating that it is using other parameters to infer the amount of clouds and aerosols in a given scene. For example, the IDP filters are often selected by DOGO, which indicates that they are functioning as anticipated and properly identifying scenes containing clouds

Clear-sky carbon dioxide satellite retrievals

R. R. Nelson et al.

[Title Page](#)[Abstract](#)[Introduction](#)[Conclusions](#)[References](#)[Tables](#)[Figures](#)[Back](#)[Close](#)[Full Screen / Esc](#)[Printer-friendly Version](#)[Interactive Discussion](#)

and aerosols. At 80% throughput, the full-physics retrieval has slightly smaller RMS errors than the clear-sky retrieval for scenes containing a moderate amount of clouds or aerosols ($0.1 < \tau < 1.0$). This supports our hypothesis that the full-physics retrieval's parameterization of clouds and aerosols is helpful for these types of scenes and that the clear-sky retrieval struggles because it is unable to account for the light path modifications caused by these contaminants. When only 30% of the ocean data remains (blue histogram), primarily low optical depth scenes ($\tau < 0.3$) remain and the clear-sky retrieval performs about as well as the full-physics retrieval in terms of both precision and bias, as the RMS errors are nearly identical. Additionally, the precision and bias were analyzed separately (not shown) and found to be similar. One might think that even slightly contaminated scenes ($\tau \sim 0.1$ – 0.3) should have been removed for the 30% throughput case, but DOGO's goal is to minimize the X_{CO_2} RMS error, not simply to remove scenes with high optical depths.

A similar analysis was performed for land scenes, with the results displayed in Fig. 6. As was seen over ocean in Fig. 5, at larger throughputs, higher optical depths correspond to larger RMS errors in the X_{CO_2} data. The clear-sky retrieval struggles with these high optical depth scenes, but also has relatively large RMS errors (~ 3 ppm) for moderate to small optical depths. As the throughput decreases, the RMS error becomes smaller and more uniform over the entire range of optical depths for both retrieval types. Interestingly, at a throughput of 30% some high optical depth scenes ($\tau > 1.0$) for the clear-sky retrieval over land still remain. However, the RMS error is still optimally reduced by DOGO and only $\sim 10\%$ worse than the full-physics retrieval. For the full-physics dataset, DOGO chooses to remove nearly all of these thick cloud or aerosol scenes. This suggests that the clear-sky retrieval is less sensitive to some high optical depth scenes over land, perhaps due to complex light path cancellation effects.

In addition to the statistical analysis of the full dataset, spatial errors in the OCO-2 retrieval datasets were analyzed to see if regional variability existed and if there were regions where the clear-sky retrieval had relatively small errors compared to the full-physics retrieval. These regional X_{CO_2} RMS errors for the simulated OCO-2 datasets

Clear-sky carbon dioxide satellite retrievals

R. R. Nelson et al.

Title Page

Abstract

Introduction

Conclusions

References

Tables

Figures



Back

Close

Full Screen / Esc

Printer-friendly Version

Interactive Discussion



ever, even at low throughputs (less than 60 %), the clear-sky retrieval dataset still has RMS errors roughly 30–60 % larger than those of the full-physics retrieval. This is in contrast to our simulation-based OCO-2 results, suggesting that additional unknown real-world mechanisms not included in the simulations may limit the ability of the clear-sky retrieval on real measurements over ocean surfaces. It is also possible that, despite promising results from our simulation-based tests, our filtering technique is unable to sufficiently remove scenes contaminated by clouds and aerosols over ocean surfaces. Another striking feature in this result is how effective the full-physics retrieval performs over ocean, even for highly contaminated scenes. At 100 % throughput, it still has RMS errors less than 2 ppm, implying that the more homogeneous nature of the ocean surface allows for the full-physics algorithm to successfully capture the influence of cloud and aerosol scattering effects.

Over land, the clear-sky retrieval (dashed orange line) has errors similar to the full-physics retrieval (solid orange line) when only modestly filtered by DOGO (throughput of $\sim 80\%$), which qualitatively reproduces our simulation-based results. The slopes of the initial decreases in RMS error over land are steeper than those for ocean. This may suggest that DOGO is more effective at initially removing contaminated or low quality measurements over land surfaces, despite having access to and using similar filtering variables. This may be due to photons scattering multiple times between cloud or aerosol layers and the surface and producing a more distinguishable signal for DOGO to filter on than for ocean surfaces, where photons are much less likely to scatter off the surface multiple times (due to glint angle geometry).

The X_{CO_2} RMS errors for the TransCom regions are shown in Fig. 9. The left panel shows the RMS error for the GOSAT full-physics retrieval dataset while the right panel shows the same but for the GOSAT clear-sky dataset. The datasets shown were post-filtered using DOGO with a throughput of 30 %. Over ocean, the clear-sky retrievals (right) consistently have regional X_{CO_2} RMS errors 40–60 % larger than the full-physics retrievals (left). The results over land surfaces are more variable. While the global mean difference in RMS error over land at 30 % throughput is 0.1 ppm, or $\sim 10\%$, this differ-

ence, when regionally analyzed, can be positive or negative. Certain regions, such as Northern Africa, have lower full-physics retrieval RMS errors but others, such as South America, have slightly lower clear-sky retrieval RMS errors. This regional variability could be due to heterogeneous surface characteristics or cloud and aerosol compositions compared to the relatively uniform ocean. Thus, we can not say with confidence that clear-sky retrievals perform better or worse over land surfaces for real GOSAT data without further investigation, but in general the two retrievals are surprisingly equivalent over land.

6 Conclusions

In this study we evaluated the performance of non-scattering, or “clear-sky”, X_{CO_2} retrievals from hyperspectral near-infrared measurements of reflected sunlight by comparing them to “full-physics” X_{CO_2} retrievals, which include scattering by clouds and aerosols. From our statistical analysis, we conclude that clear-sky X_{CO_2} retrievals typically do not perform as well as full-physics X_{CO_2} retrievals when no filtering is applied, consistent with previous findings. However, with the application of pre- and post-filters to remove low quality measurements contaminated by clouds and aerosols using only information contained in the near-infrared measurements themselves, our OCO-2 simulation-based tests demonstrate that clear-sky retrievals are of similar or only slightly reduced quality compared to the full-physics retrieval, depending on filtration level. This finding holds for real GOSAT observations over land, but not over ocean surfaces. For GOSAT measurements over land, the clear-sky retrieval has errors similar to those of the full-physics retrieval. For GOSAT measurements over ocean surfaces, the clear-sky retrieval has X_{CO_2} RMS errors 30–60% larger than those of the full-physics retrieval when the datasets are modestly filtered. The source of this extra error in the clear-sky retrieval applied to real GOSAT ocean measurements is unclear at this point and requires further study. Analysis of real OCO-2 measurements, which were unavailable during the time of this work, may help answer this question.

Clear-sky carbon dioxide satellite retrievals

R. R. Nelson et al.

Title Page

Abstract

Introduction

Conclusions

References

Tables

Figures



Back

Close

Full Screen / Esc

Printer-friendly Version

Interactive Discussion



Clear-sky carbon dioxide satellite retrievals

R. R. Nelson et al.

Title Page

Abstract

Introduction

Conclusions

References

Tables

Figures



Back

Close

Full Screen / Esc

Printer-friendly Version

Interactive Discussion



For OCO-2 simulations and real GOSAT measurements over both land and ocean surfaces, the clear-sky retrieval has X_{CO_2} RMS errors less than 2.0 ppm when the dataset is sufficiently filtered. In addition, clear-sky retrievals can be one to two orders of magnitude faster than full-physics retrievals, as scattering by clouds and aerosols can be completely ignored. For sensors that collect enormous volumes of data, such as OCO-2, this could allow for significantly more data to be processed. Thus, clear-sky X_{CO_2} retrievals may be useful for certain applications that require a larger number of retrievals but have less stringent error requirements. Further, estimates of parameters, such as surface albedo, from a clear-sky retrieval could serve as a useful first-guess for the full-physics retrieval. The faster processing and more accurate first-guess values could be of even greater utility to future satellite missions that will likely make even more measurements than OCO-2.

Acknowledgements. The authors would like to thank Natalie Tourville, Scott Denning, and Chris Kummerow of Colorado State University for their contributions to this work. Funding sources for this research include the NASA Jet Propulsion Laboratory (NASA JPL OCO-2 Subcontract #1 439 002) and the American Meteorological Society (AMS) Graduate Fellowship Program.

References

- Aben, I., Hasekamp, O., and Hartmann, W.: Uncertainties in the space-based measurements of CO_2 columns due to scattering in the Earth's atmosphere, *J. Quant. Spectrosc. Ra.*, 104, 450–459, doi:10.1016/j.jqsrt.2006.09.013, 2007. 13042
- Baker, D. F., Bösch, H., Doney, S. C., O'Brien, D., and Schimel, D. S.: Carbon source/sink information provided by column CO_2 measurements from the Orbiting Carbon Observatory, *Atmos. Chem. Phys.*, 10, 4145–4165, doi:10.5194/acp-10-4145-2010, 2010. 13041, 13048
- Basu, S., Guerlet, S., Butz, A., Houweling, S., Hasekamp, O., Aben, I., Krummel, P., Steele, P., Langenfelds, R., Torn, M., Biraud, S., Stephens, B., Andrews, A., and Worthy, D.: Global CO_2 fluxes estimated from GOSAT retrievals of total column CO_2 , *Atmos. Chem. Phys.*, 13, 8695–8717, doi:10.5194/acp-13-8695-2013, 2013. 13041

Clear-sky carbon dioxide satellite retrievals

R. R. Nelson et al.

Title Page

Abstract

Introduction

Conclusions

References

Tables

Figures



Back

Close

Full Screen / Esc

Printer-friendly Version

Interactive Discussion



- Butz, A., Hasekamp, O. P., Frankenberg, C., and Aben, I.: Retrievals of atmospheric CO₂ from simulated space-borne measurements of backscattered near-infrared sunlight: accounting for aerosol effects, *Appl. Optics*, 48, 3322–3336, doi:10.1364/AO.48.003322, 2009. 13042, 13043
- 5 Butz, A., Guerlet, S., Hasekamp, O. P., Kuze, A., and Suto, H.: Using ocean-glint scattered sunlight as a diagnostic tool for satellite remote sensing of greenhouse gases, *Atmos. Meas. Tech.*, 6, 2509–2520, doi:10.5194/amt-6-2509-2013, 2013. 13043, 13051
- Chevallier, F., Bréon, F.-M., and Rayner, P. J.: Contribution of the Orbiting Carbon Observatory to the estimation of CO₂ sources and sinks: Theoretical study in a variational data assimilation framework, *J. Geophys. Res.*, 112, D09307, doi:10.1029/2006JD007375, 2007. 13041
- 10 Chevallier, F., Maksyutov, S., Bousquet, P., Bréon, F.-M., Saito, R., Toshida, Y., and Yokota, T.: On the accuracy of the CO₂ surface fluxes to be estimated from the GOSAT observations, *Geophys. Res. Lett.*, 36, L19807, doi:10.1029/2009GL040108, 2009. 13041
- Chevallier, F., Ciais, P., Conway, T. J., Aalto, T., Anderson, B. E., Bousquet, P., Brunke, E. G., Ciattaglia, L., Esaki, Y., Fröhlich, M., Gomez, A., Gomez-Pelaez, A. J., Haszpra, L., Krummel, P. B., Langenfelds, R. L., Leuenberger, M., Machida, T., Maignan, F., Matsueda, H., Morguí, J. A., Mukai, H., Nakazawa, T., Peylin, P., Ramonet, M., Rivier, L., Sawa, Y., Schmidt, M., Steele, L. P., Vay, S. A., Vermeulen, A. T., Wofsy, S., and Worthy, D.: CO₂ surface fluxes at grid point scale estimated from a global 21 year reanalysis of atmospheric measurements, *J. Geophys. Res.*, 115, D21307, doi:10.1029/2010JD013887, 2010. 13048
- 20 Connor, B. J., Bösch, H., Toon, G., Sen, B., Miller, C., and Crisp, D.: Orbiting Carbon Observatory: inverse method and prospective error analysis, *J. Geophys. Res.*, 113, D05305, doi:10.1029/2006JD008336, 2008. 13044
- Cox, C. and Munk, W.: Measurement of the roughness of the sea surface from photographs of the sun's glitter, *J. Opt. Soc. Am.*, 44, 838–850, doi:10.1364/JOSA.44.000838, 1954. 13047
- 25 Crisp, D., Miller, C. E., and DeCola, P. L.: NASA Orbiting Carbon Observatory: measuring the column averaged carbon dioxide mole fraction from space, *J. Appl. Remote Sens.*, 2, 023508, doi:10.1117/1.2898457, 2008. 13041
- Crisp, D., Bösch, H., Brown, L., Castano, R., Christi, M., Connor, B., Frankenberg, C., McDuffie, J., Miller, C. E., Natraj, V., O'Dell, C., O'Brien, D., Polonsky, I., Oyafuso, F., Thompson, D., Toon, G., and Spurr, R.: OCO (Orbiting Carbon Observatory)-2 Level 2 Full Physics Retrieval Algorithm Theoretical Basis, Tech. Rep. OCO D-65488, Tech. rep., NASA Jet Propulsion Laboratory, California Institute of Technology, Pasadena, CA, version 1.0 Rev 4,
- 30

Clear-sky carbon dioxide satellite retrievals

R. R. Nelson et al.

Title Page

Abstract

Introduction

Conclusions

References

Tables

Figures



Back

Close

Full Screen / Esc

Printer-friendly Version

Interactive Discussion



available at: http://disc.sci.gsfc.nasa.gov/acdisc/documentation/OCO-2_L2_FP_ATBD_v1_rev4_Nov10.pdf (last access: January 2012), 2010. 13042, 13045

Crowell, S., Rayner, P., Zaccheo, S., and Moore, B.: Impacts of atmospheric state uncertainty on O₂ measurement requirements for the ASCENDS mission, *Atmos. Meas. Tech.*, 8, 2685–2697, doi:10.5194/amt-8-2685-2015, 2015. 13045

Feng, L., Palmer, P. I., Yang, Y., Yantosca, R. M., Kawa, S. R., Paris, J.-D., Matsueda, H., and Machida, T.: Evaluating a 3-D transport model of atmospheric CO₂ using ground-based, aircraft, and space-borne data, *Atmos. Chem. Phys.*, 11, 2789–2803, doi:10.5194/acp-11-2789-2011, 2011. 13048

Frankenberg, C., Platt, U., and Wagner, T.: Iterative maximum a posteriori (IMAP)-DOAS for retrieval of strongly absorbing trace gases: Model studies for CH₄ and CO₂ retrieval from near infrared spectra of SCIAMACHY onboard ENVISAT, *Atmos. Chem. Phys.*, 5, 9–22, doi:10.5194/acp-5-9-2005, 2005. 13048

Frankenberg, C., Pollock, R., Lee, R. A. M., Rosenberg, R., Blavier, J.-F., Crisp, D., O'Dell, C. W., Osterman, G. B., Roehl, C., Wennberg, P. O., and Wunch, D.: The Orbiting Carbon Observatory (OCO-2): spectrometer performance evaluation using pre-launch direct sun measurements, *Atmos. Meas. Tech.*, 8, 301–313, doi:10.5194/amt-8-301-2015, 2015. 13046

Guerlet, S., Butz, A., Schepers, D., Basu, S., Hasekamp, O. P., Kuze, A., Yokota, T., Blavier, J.-F., Deutscher, N. M., Griffith, D. W. T., Hase, F., Kyro, E., Morino, I., Sherlock, V., Sussmann, R., Galli, A., and Aben, I.: Impact of aerosol and thin cirrus on retrieving and validating XCO₂ from GOSAT shortwave infrared measurements, *J. Geophys. Res.*, 118, 1–19, doi:10.1002/jgrd.50332, 2013. 13043, 13047

Gurney, K. R., Law, R. M., Denning, A. S., Rayner, P. J., Baker, D., Bousquet, P., Bruhwiler, L., Chen, Y.-H., Ciais, P., Fan, S., Fung, I. Y., Gloor, M., Heimann, M., Higuchi, K., John, J., Kowalczyk, E., Maki, T., Maksyutov, S., Peylin, P., Prather, M., Pak, B. C., Sarmiento, J., Taguchi, S., Takahashi, T., and Yuen, C.-W.: TransCom 3 CO₂ inversion intercomparison: 1. Annual mean control results and sensitivity to transport and prior flux information, *Tellus B*, 55, 555–579, doi:10.1034/j.1600-0889.2003.00049.x, 2003. 13050

Holben, B. N., Eck, T. F., Slutsker, I., Tanré, D., Buis, J., Setzer, A., Vermote, E., Reagan, J. A., Kaufman, Y. J., Nakajima, T., Lavenu, F., Jankowiak, I., and Smirnov, A.: AERONET – a federated instrument network and data archive for aerosol characterization, *Remote Sens. Environ.*, 66, 1–16, doi:10.1016/S0034-4257(98)00031-5, 1998. 13043

Clear-sky carbon dioxide satellite retrievals

R. R. Nelson et al.

Title Page

Abstract

Introduction

Conclusions

References

Tables

Figures



Back

Close

Full Screen / Esc

Printer-friendly Version

Interactive Discussion



Kahn, R., Banerjee, P., and McDonald, D.: Sensitivity of multiangle imaging to natural mixtures of aerosols over ocean, *J. Geophys. Res.*, 106, 18219–18238, doi:10.1029/2000JD900497, 2001. 13046

L'Ecuyer, T. S. and Jiang, J. H.: Touring the atmosphere aboard the A-Train, *Phys. Today*, 63, 36–41, doi:10.1063/1.3463626, 2010. 13047

Le Quéré, C., Raupach, M. R., Canadell, J. G., and Marland, G.: Trends in the sources and sinks of carbon dioxide, *Nat. Geosci.*, 2, 831–836, doi:10.1038/ngeo689, 2009. 13041

Maksyutov, S., Takagi, H., Valsala, V. K., Saito, M., Oda, T., Saeki, T., Belikov, D. A., Saito, R., Ito, A., Yoshida, Y., Morino, I., Uchino, O., Andres, R. J., and Yokota, T.: Regional CO₂ flux estimates for 2009–2010 based on GOSAT and ground-based CO₂ observations, *Atmos. Chem. Phys.*, 13, 9351–9373, doi:10.5194/acp-13-9351-2013, 2013. 13048

Mandrake, L.: DOGO Warn Levels: An Upgrade to Quality Flags for the OCO-2 Data Products, AGU Fall Meeting, 17 December 2015, San Francisco, CA, USA, 2015. 13043, 13049

Mandrake, L., Frankenberg, C., O'Dell, C. W., Osterman, G., Wennberg, P., and Wunch, D.: Semi-autonomous sounding selection for OCO-2, *Atmos. Meas. Tech.*, 6, 2851–2864, doi:10.5194/amt-6-2851-2013, 2013. 13043, 13049, 13050

Miller, C. E., Crisp, D., DeCola, P. L., Olsen, S. C., Randerson, J. T., Michalak, A. M., Alkhaled, A., Rayner, P., Jacob, D. J., Suntharalingam, P., Jones, D. B. A., Denning, A. S., Nicholls, M. E., Doney, S. C., Pawson, S., Bösch, H., Connor, B. J., Fung, I. Y., O'Brien, D., Salawitch, R. J., Sander, S. P., Sen, B., Tans, P., Toon, G. C., Wennberg, P. O., Wofsy, S. C., Yung, Y. L., and Law, R. M.: Precision requirements for space-based X_{CO₂} data, *J. Geophys. Res.*, 112, D10314, doi:10.1029/2006JD007659, 2007. 13041

Nelson, R. R.: The Impact of Aerosols on Space-Based Retrievals of Carbon Dioxide, MSC thesis, Colorado State University, Fort Collins, USA, 2015. 13042

O'Brien, D. M. and Rayner, P. J.: Global observations of the carbon budget 2. CO₂ column from differential absorption of reflected sunlight in the 1.61 μm band of CO₂, *J. Geophys. Res.*, 107, ACH 6–1, doi:10.1029/2001JD000617, 2002. 13042

O'Brien, D. M., Polonsky, I., O'Dell, C., and Carheden, A.: Orbiting Carbon Observatory (OCO), Algorithm Theoretical Basis Document: The OCO Simulator ISSN 0737-5352-85, Tech. rep., Cooperative Institute for Research in the Atmosphere, Colorado State University, Fort Collins, USA, 2009. 13046

O'Dell, C. W., Connor, B., Bösch, H., O'Brien, D., Frankenberg, C., Castano, R., Christi, M., Eldering, D., Fisher, B., Gunson, M., McDuffie, J., Miller, C. E., Natraj, V., Oyafuso, F., Polon-

Clear-sky carbon dioxide satellite retrievals

R. R. Nelson et al.

Title Page

Abstract

Introduction

Conclusions

References

Tables

Figures



Back

Close

Full Screen / Esc

Printer-friendly Version

Interactive Discussion



sky, I., Smyth, M., Taylor, T., Toon, G. C., Wennberg, P. O., and Wunch, D.: The ACOS CO₂ retrieval algorithm – Part 1: Description and validation against synthetic observations, *Atmos. Meas. Tech.*, 5, 99–121, doi:10.5194/amt-5-99-2012, 2012. 13042, 13045, 13046, 13048

Osterman, G., Eldering, A., Avis, C., O'Dell, C., Martinez, E., Crisp, D., Frankenberg, C., and Fisher, B.: ACOS Level 2 Standard Product Data User's Guide, v3.4, Jet Propulsion Laboratory, Pasadena, CA, USA, 2013. 13049

Parker, R., Boösch, H., and Cogan, A.: Algorithm Theoretical Basis Document Version 2 (ATBDv2) The University of Leicester Full-Physics Retrieval Algorithm for the retrieval of XCO₂ and XCH₄, Tech. rep., version 2, University of Leicester, Leicester, UK, 2011. 13042

Peters, W., Jacobson, A. R., Sweeney, C., Andrews, A. E., Conway, T. J., Masarie, K., Miller, J. B., Bruhwiler, L. M. P., Petron, G., Hirsch, A. I., Worthy, D. E. J., van der Werf, G. R., Randerson, J. T., Wennberg, P. O., Krol, M. C., and Tans, P. P.: An atmospheric perspective on North American carbon dioxide exchange: CarbonTracker, *P. Natl. Acad. Sci. USA*, 104, 18925–18930, doi:10.1073/pnas.0708986104, 2007. 13048

Rayner, P. J. and O'Brien, D. M.: The utility of remotely sensed CO₂ concentration data in surface source inversions, *Geophys. Res. Lett.*, 28, 175–178, doi:10.1029/2000GL011912, 2001. 13041

Reuter, M., Bovensmann, H., Buchwitz, M., Burrows, J. P., Heymann, J., Hilker, M., and Schneising, O.: Algorithm Theoretical Basis Document Version 2 (ATBDv2) – The Bremen Optimal Estimation DOAS (BESD) Algorithm for the Retrieval of XCO₂, Tech. rep., Institute of Environmental Physics (IUP) University of Bremen, Bremen, Germany, version 2, 2013. 13042

Rodgers, C. D.: *Inverse Methods for Atmospheric Sounding: Theory and Practice*, World Scientific, Singapore, 2000. 13045

Salstein, D. A., Ponte, R. M., and Cady-Pereira, K.: Uncertainties in atmospheric surface pressure fields from global analyses, *J. Geophys. Res.*, 113, D14107, doi:10.1029/2007JD009531, 2008. 13045

Taylor, T. E., O'Dell, C. W., O'Brien, D. M., Kikuchi, N., Nakajima, T. Y. T. Y., Ishida, H., Crisp, D., and Nakajima, T.: Comparison of cloud-screening methods applied to GOSAT near-infrared spectra, *IEEE T. Geosci. Remote*, 50, 295–309, doi:10.1109/TGRS.2011.2160270, 2012. 13044, 13048

Taylor, T. E., Savtchenko, A., Osterman, G., O'Dell, C. W., Nelson, R. R., Pollock, R. H., Frankenberg, C., Rosenthal, E. J., Crisp, D., Partain, P., Chang, A., Eldering, A., Cronk, H. Q.,

Clear-sky carbon dioxide satellite retrievals

R. R. Nelson et al.

[Title Page](#)[Abstract](#)[Introduction](#)[Conclusions](#)[References](#)[Tables](#)[Figures](#)[Back](#)[Close](#)[Full Screen / Esc](#)[Printer-friendly Version](#)[Interactive Discussion](#)

Fisher, B., and Gunson, M. R.: Orbiting Carbon Observatory-2 (OCO-2) cloud screening; validation against collocated MODIS and CALIOP data, *Atmos. Meas. Tech.*, accepted, 2015. 13044, 13048

Winker, D. M., Vaughan, M. A., Omar, A., Hu, Y., and Powell, K. A.: Overview of the CALIPSO Mission and CALIOP data processing algorithms, *J. Atmos. Ocean. Tech.*, 26, 2310–2323, doi:10.1175/2009JTECHA1281.1, 2009. 13047

Wunch, D., Toon, G. C., Blavier, J. F., Washenfelder, R. A., Notholt, J., Connor, B. J., Griffith, D. W. T., Sherlock, V., and Wennberg, P. O.: The Total Carbon Column Observing Network, *Philos. T. Roy. Soc. A*, 369, 2087–2112, doi:10.1098/rsta.2010.0240, 2011a. 13047

Yokota, T., Yoshida, Y., Eguchi, N., Ota, Y., Tanaka, T., Watanabe, H., and Maksyutov, S.: Global concentrations of CO₂ and CH₄ retrieved from GOSAT: first preliminary results, *Scientific Online Letters on the Atmosphere*, 5, 160–163, doi:10.2151/sola.2009-041, 2009. 13041, 13042

Clear-sky carbon dioxide satellite retrievals

R. R. Nelson et al.

Title Page

Abstract

Introduction

Conclusions

References

Tables

Figures



Back

Close

Full Screen / Esc

Printer-friendly Version

Interactive Discussion



Table 1. Properties of the full-physics and clear-sky X_{CO_2} retrievals.

Type	Bands Used (μm)	Clouds & Aerosols Parameterized	P_{stc}	Source
Full-Physics	0.76, 1.6, 2.0	Yes		O ₂ A-band
Clear-Sky	1.6, 2.0	No		ECMWF

Clear-sky carbon dioxide satellite retrievals

R. R. Nelson et al.

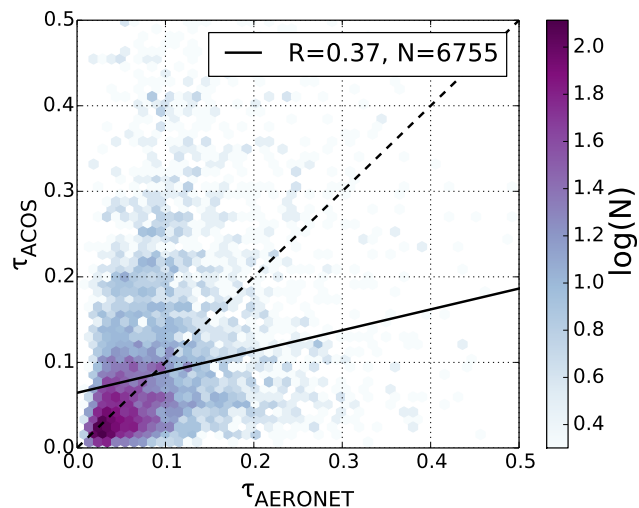


Figure 1. Heat-map of AERONET aerosol optical depth compared to the retrieved ACOS B3.4 aerosol optical depth from GOSAT measurements. A linear fit is shown by the solid black line.

[Title Page](#)[Abstract](#)[Introduction](#)[Conclusions](#)[References](#)[Tables](#)[Figures](#)[Back](#)[Close](#)[Full Screen / Esc](#)[Printer-friendly Version](#)[Interactive Discussion](#)

Clear-sky carbon dioxide satellite retrievals

R. R. Nelson et al.

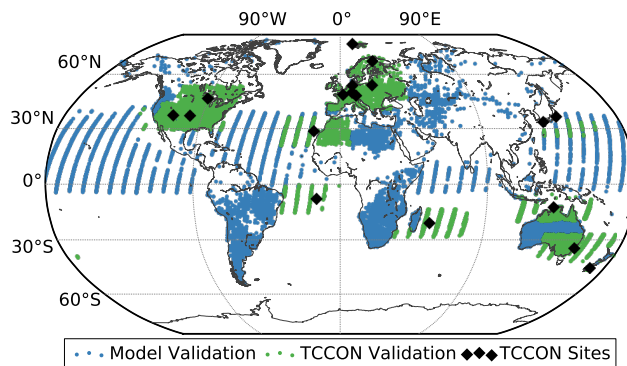


Figure 2. Global distribution and X_{CO_2} validation source of the 25 000 GOSAT measurements.

[Title Page](#)[Abstract](#)[Introduction](#)[Conclusions](#)[References](#)[Tables](#)[Figures](#)[Back](#)[Close](#)[Full Screen / Esc](#)[Printer-friendly Version](#)[Interactive Discussion](#)

Clear-sky carbon dioxide satellite retrievals

R. R. Nelson et al.

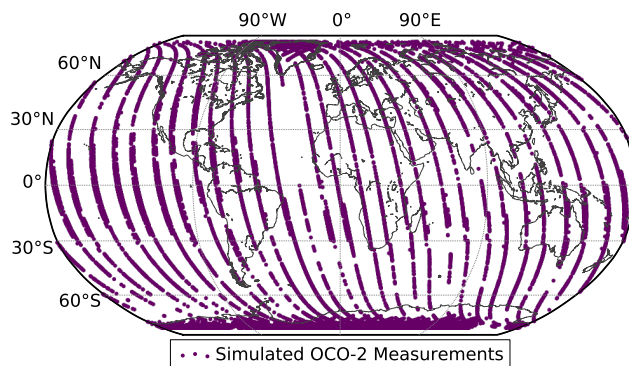


Figure 3. Global distribution of the 44 000 simulated OCO-2 measurements.

[Title Page](#)[Abstract](#)[Introduction](#)[Conclusions](#)[References](#)[Tables](#)[Figures](#)[Back](#)[Close](#)[Full Screen / Esc](#)[Printer-friendly Version](#)[Interactive Discussion](#)

Clear-sky carbon dioxide satellite retrievals

R. R. Nelson et al.

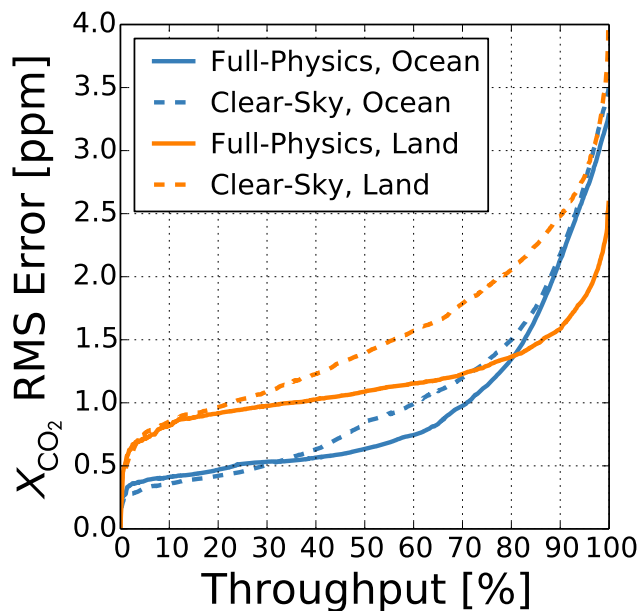


Figure 4. DOGO filters applied to retrievals on simulated OCO-2 measurements for ocean (blue) and land (orange) surfaces for both full-physics (solid) and clear-sky (dashed) retrievals. Four variables were chosen and optimized by the DOGO system. The x axis is throughput, which represents the percentage of data that remains after applying the filter. The y axis is the X_{CO_2} RMS error.

[Title Page](#)[Abstract](#)[Introduction](#)[Conclusions](#)[References](#)[Tables](#)[Figures](#)[◀](#)[▶](#)[◀](#)[▶](#)[Back](#)[Close](#)[Full Screen / Esc](#)[Printer-friendly Version](#)[Interactive Discussion](#)

Clear-sky carbon dioxide satellite retrievals

R. R. Nelson et al.

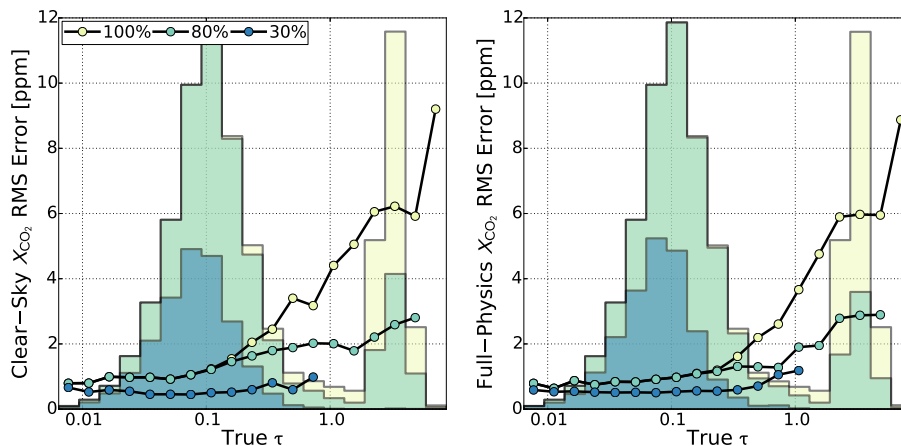


Figure 5. Clear-sky (left) and full-physics (right) X_{CO_2} retrieval RMS errors vs. the true total optical depth for simulated OCO-2 measurements over ocean. The black lines are binned averages of the X_{CO_2} RMS error for 100 % throughput (yellow markers), 80 % throughput (green markers), and 30 % throughput (blue markers). The histograms represent the relative amount of data for each throughput.

Title Page

Abstract

Introduction

Conclusions

References

Tables

Figures



Back

Close

Full Screen / Esc

Printer-friendly Version

Interactive Discussion



Clear-sky carbon dioxide satellite retrievals

R. R. Nelson et al.

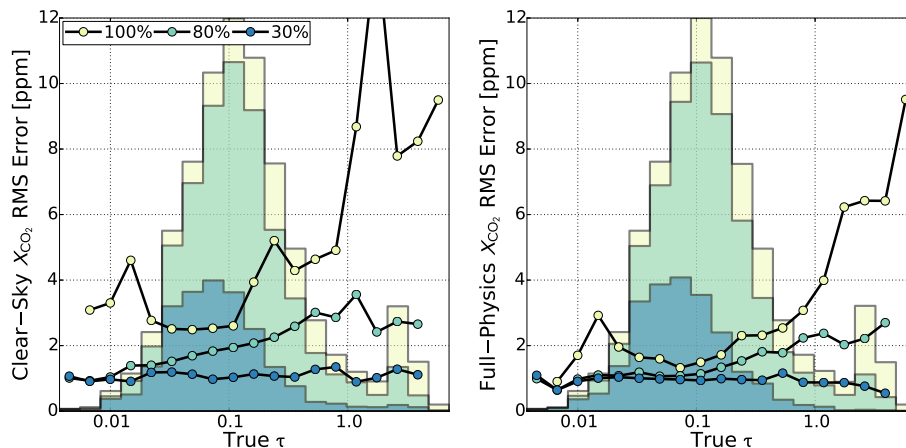


Figure 6. Clear-sky (left) and full-physics (right) X_{CO_2} retrieval RMS errors vs. the true total optical depth for simulated OCO-2 measurements over land. The black lines are binned averages of the X_{CO_2} RMS error for 100% throughput (yellow markers), 80% throughput (green markers), and 30% throughput (blue markers). The histograms represent the relative amount of data for each throughput.

Title Page

Abstract

Introduction

Conclusions

References

Tables

Figures



Back

Close

Full Screen / Esc

Printer-friendly Version

Interactive Discussion



Clear-sky carbon dioxide satellite retrievals

R. R. Nelson et al.

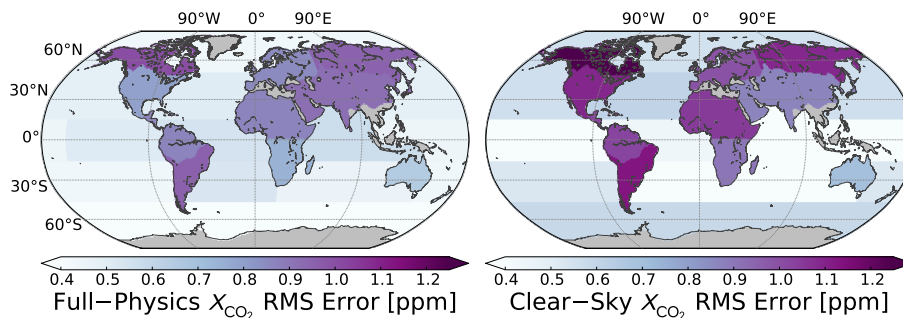


Figure 7. OCO-2 full-physics (left) and clear-sky (right) retrieval X_{CO_2} RMS errors for the TransCom regions with a throughput of 30 %.

[Title Page](#)[Abstract](#)[Introduction](#)[Conclusions](#)[References](#)[Tables](#)[Figures](#)[Back](#)[Close](#)[Full Screen / Esc](#)[Printer-friendly Version](#)[Interactive Discussion](#)

