

Supplement of Atmos. Meas. Tech. Discuss., 8, 65–120, 2015
<http://www.atmos-meas-tech-discuss.net/8/65/2015/>
doi:10.5194/amtd-8-65-2015-supplement
© Author(s) 2015. CC Attribution 3.0 License.



Atmospheric
Measurement
Techniques
Discussions



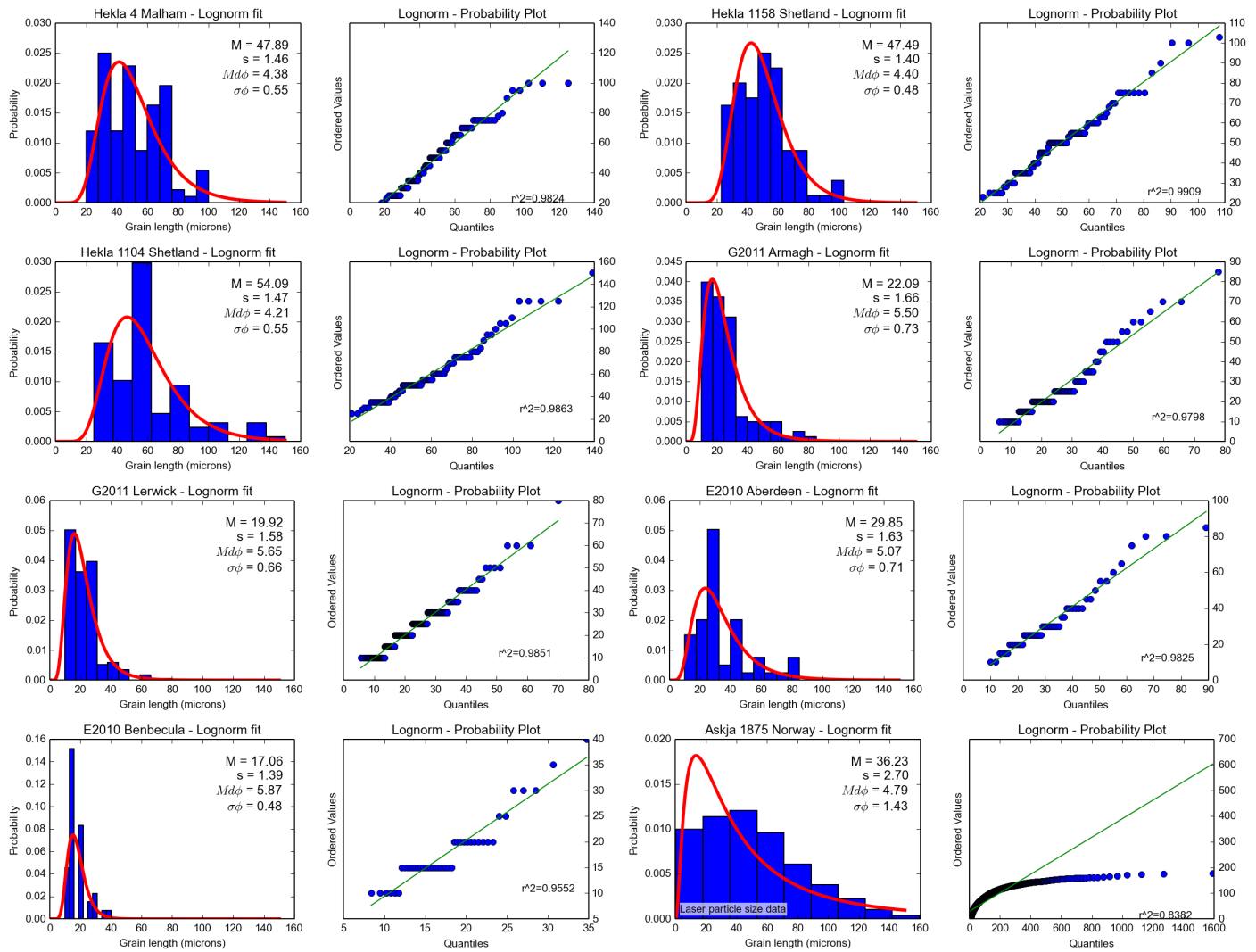
Supplement of

Big grains go far: reconciling tephrochronology with atmospheric measurements of volcanic ash

J. A. Stevenson et al.

Correspondence to: J. A. Stevenson (john.stevenson@ed.ac.uk)

Supplement



Further examples of statistical model fits to distal tephra grain size distributions. Note the poor fit of the lognormal distribution to the laser particle size data.