

**EUMETSAT Meteosat
Surface Albedo
Climate Data Record**

A. Lattanzio et al.

This discussion paper is/has been under review for the journal Atmospheric Measurement Techniques (AMT). Please refer to the corresponding final paper in AMT if available.

Quality assessment and improvement of the EUMETSAT Meteosat Surface Albedo Climate Data Record

A. Lattanzio¹, F. Fell², R. Bennartz³, I. F. Trigo⁴, and J. Schulz¹

¹EUMETSAT, Darmstadt, Germany

²Informus GmbH, Berlin, Germany

³University of Wisconsin-Madison, Space Science and Engineering Center, Madison, USA

⁴Instituto Portugues do Mar e da Atmosfera (IPMA), Lisboa, Portugal

Received: 28 April 2015 – Accepted: 08 June 2015 – Published: 23 July 2015

Correspondence to: A. Lattanzio (alessio.lattanzio@eumetsat.int)

Published by Copernicus Publications on behalf of the European Geosciences Union.

Title Page	
Abstract	Introduction
Conclusions	References
Tables	Figures
◀	▶
◀	▶
Back	Close
Full Screen / Esc	
Printer-friendly Version	
Interactive Discussion	



Abstract

Surface albedo has been identified as an important parameter for understanding and quantifying the Earth's radiation budget. EUMETSAT generated the Meteosat Surface Albedo (MSA) Climate Data Record (CDR) currently comprising up to 24 years (1982–2006) of continuous surface albedo coverage for large areas of the Earth. This CDR has been created within the Sustained and Coordinated Processing of Environmental Satellite Data for Climate Monitoring (SCOPE-CM) framework. The long-term consistency of the MSA CDR is high and meets the Global Climate Observing System (GCOS) stability requirements for desert reference sites. The limitation in quality due to non removed clouds by the embedded cloud screening procedure is the most relevant weakness in the retrieval process. A twofold strategy is applied to efficiently improve the cloud detection and removal. A first step consists on the application of a robust and reliable cloud mask taking advantage of the information contained in the measurements of the infrared and visible bands. Due to the limited information available from old radiometers some clouds can still remain undetected. A second step relies on a post processing analysis of the albedo seasonal variation together with the usage of a background albedo map in order to detect and screen out such outliers. The usage of a reliable cloud mask has a double effect. It enhances the number of high quality retrievals for tropical forest areas sensed under low view angles and removes the most frequently unrealistic retrievals on similar surfaces sensed under high view angles. As expected, the usage of a cloud mask has a negligible impact on desert areas where clear conditions dominate. The exploitation of the albedo seasonal variation for cloud removal has good potentialities but it needs to be carefully addressed. Nevertheless it is shown that the inclusion of cloud masking and removal strategy is a key point for the generation of the next MSA CDR Release.

EUMETSAT Meteosat Surface Albedo Climate Data Record

A. Lattanzio et al.

Title Page

Abstract

Introduction

Conclusions

References

Tables

Figures



Back

Close

Full Screen / Esc

Printer-friendly Version

Interactive Discussion



1 Introduction

Surface albedo has been identified as an important parameter for climate change by the Working group I within the Intergovernmental Panel on Climate Change (IPCC) (Foster et al., 2007). Monitoring this parameter is paramount to understand the climate system (e.g. Henderson-Sellers and Wilson, 1983) because it is a key forcing variable (e.g. Hansen et al., 1997) and it is controlling the surface radiation budget (e.g. Pielke and Avissar, 1990). The Global Climate Observing System (GCOS) formulated scientific requirements for climate observations including a list of relevant parameters, the Essential Climate Variables (ECVs), with associated observation requirements (GCOS-138, 2010). One of the terrestrial ECVs is the land surface albedo. This parameter is defined as the ratio of the radiation flux reflected to the incident radiation flux impinging the surface (Schaepman-Strub et al., 2006). It depends on both the anisotropy of the surface and the atmosphere (e.g. Schaaf et al., 2009). GCOS has specified as satellite derived products for climate change studies two variables corresponding to two opposite extreme conditions: the black-sky albedo (BSA) defined in the absence of a diffuse irradiance component and the white-sky albedo (WSA) defined under pure diffuse irradiance conditions. Throughout this paper we use the variable directional hemispherical reflectance (DHR) to refer to black sky albedo and the variable bi-hemispherical albedo under isotropic illumination (BHR_{iso}) to refer to white sky albedo. Those two parameters can be used to estimate the actual albedo, the blue-sky or BHR under ambient conditions (Pinty et al., 2005). EUMETSAT has undertaken an activity to generate a surface albedo dataset (Meteosat Surface Albedo, MSA) climate data record (CDR), spanning over more than two decades from measurements acquired by the Meteosat Visible and Infrared Imager (MVIS) instrument onboard the Meteosat First Generation (MFG) satellites (EUMETSAT, 2011). EUMETSAT coordinated a study (ALBEDOVAL) for the validation of the MSA CDR. In the validation report (Fell et al., 2012) the full set of results, including comparison with in-situ measurements and satellite retrievals, can be found. This paper focuses on the most relevant positive outcome, i.e. the high tempo-

EUMETSAT Meteosat Surface Albedo Climate Data Record

A. Lattanzio et al.

Title Page

Abstract

Introduction

Conclusions

References

Tables

Figures



Back

Close

Full Screen / Esc

Printer-friendly Version

Interactive Discussion



ral stability and presents a strategy to address the most relevant weakness, i.e. the deficiency in quality due to undetected clouds.

2 Surface albedo retrieval from geostationary satellites

Satellite measurements offer an unique opportunity for documenting and monitoring the spatial surface albedo distribution and in particular its variability at continental scales. Observations acquired by instruments on board geostationary satellites have three major advantages: (i) long term archived data, (ii) capability of a surface sampling under different illumination conditions and (iii) capability of a diurnal sampling of parameters influencing the retrieval such as cloud cover and aerosol load. One drawback is that the retrieval area is limited to a circle with a radius of ca. 65° around the sub satellite point (SSP).

Another characteristic to consider is that the pixel size is not constant but it depends on the angular distance from the satellite SSP. Most of the albedo retrieval strategies rely on the collection of cloud-free observations to define the bidirectional reflectance distribution function (BRDF). This function is used to characterize the surface angular reflectance properties. The MSA algorithm is based on a method proposed by Pinty et al. (2000a). It performs the inversion of a fast Radiative Transfer Model (RTM) ingesting reanalysis total column water vapour and total column ozone data. The method relies on daily accumulation of clear sky radiances acquired in a single visible band (VIS) and on the applicability of the reciprocity principle (Lattanzio et al., 2006). According to this principle the Bidirectional Reflectance Distribution Function (BRDF) does not change when incident and reflected angles are reversed. Measurements acquired under different illumination conditions can then be interpreted as observations taken under different viewing conditions. One key point is that the method applied in the MSA algorithm allows for a joint retrieval of aerosol load and both black and white sky albedo. An assessment of the measurement error and an estimation of the retrieval uncertainty are performed during the processing for each pixel (Govaerts and Lattanzio,

EUMETSAT Meteosat Surface Albedo Climate Data Record

A. Lattanzio et al.

Title Page

Abstract

Introduction

Conclusions

References

Tables

Figures



Back

Close

Full Screen / Esc

Printer-friendly Version

Interactive Discussion



EUMETSAT Meteosat Surface Albedo Climate Data Record

A. Lattanzio et al.

Title Page

Abstract

Introduction

Conclusions

References

Tables

Figures



Back

Close

Full Screen / Esc

Printer-friendly Version

Interactive Discussion



2007). The algorithm is applied to the native instrument visible band resulting in spectral albedo values. In the current release of the MSA CDR the products are generated as 10 days composites, except for the last period of each year, which corresponds to 5 or 6 (leap years) days. The maximum number of available products per year is 37.

5 The MSA retrieval method is general and it has been applied to the Geostationary Operational Environmental Satellite (GOES) and Geostationary Meteorological Satellite (GMS) observations (Govaerts et al., 2008). This activity has been performed within the World Meteorological Organization (WMO) Sustained and Coordinated Processing of Environmental Satellite Data for Climate Monitoring (SCOPE-CM) framework (Lat-
10 tanzio et al., 2013).

3 Requirements and validation

During the past ten years many efforts have been made to establish proper CDR requirements for detecting and assessing climate change. The analysis focused mainly on accuracy and stability (Ohring et al., 2005) and recently also on the necessary
15 length of a dataset for detecting a real change (Loew, 2014). The requirements defined by GCOS for land surface albedo are reported in Table 1. The rationale behind these requirements is to allow the detection of changes in the radiative forcing equivalent to 20% of the expected variation per decade due to greenhouse gases and other forcing, i.e. 0.1 Wm^{-2} per decade (GCOS-154, 2011). A key aspect in the generation of
20 a CDR is the assessment of the uncertainty associated with the geophysical variable retrieved. Such a parameter is essential to determine whether a detected change or trend is statistically significant or within the measurement uncertainty.

EUMETSAT coordinated a study (ALBEDOVAL) for the validation of the MSA CDR performed by a group of independent researchers in Europe and US. The validation
25 focused on four main aspects: (1) uncertainty assessment, (2) temporal consistency, (3) validation against in-situ measurements and (4) comparison with other satellite estimates.

EUMETSAT Meteosat Surface Albedo Climate Data Record

A. Lattanzio et al.

Title Page

Abstract

Introduction

Conclusions

References

Tables

Figures



Back

Close

Full Screen / Esc

Printer-friendly Version

Interactive Discussion



In order to quantify the stability and to assess the quality of the MSA CDR various data sources have been exploited. These include satellites data and in-situ measurements. The subset of validation data suitable for the objective of this paper are listed in Sect. 3.2. A systematic comparison of the MSA with in-situ observations is problematic due to the lack of direct albedo measurements representative of the large areas covered by individual MSA pixels. Most of the FluxNet (Cescatti et al., 2012) or the Baseline Surface Radiation Network (BSRN) sites (Ohmura et al., 1998) providing surface albedo observations are located in rather heterogeneous landscapes and are thus not well suited for MSA validation. In the context of the ALBEDOVAL study, a very limited number of ground sites have been identified as potential candidates for a direct case-based comparison with MSA retrievals. Satellite data used for comparison include products generated with the Moderate Resolution Imaging Spectroradiometer (MODIS) (Schaaf et al., 2002) and with the Multi-angle Imaging SpectroRadiometer (MISR) (Martonchik et al., 1998) instruments. The full set of comparison results can be found in the validation report (Fell et al., 2012).

3.1 MSA data

The MSA CDR has been derived from imagery acquired by the MVIRI radiometer onboard MFG satellites. The MVIRI field of view is centred in the SSP with a radius of ca. 65° . The main mission of these satellites was to provide data for the 0° (0DEG) service area covering most of Europe, Africa, the Middle East, and the Eastern parts of South America. In order to bridge a gap in the availability of GOES, between 1991 and 1995, Meteosat-3 was moved first to 50° W and, in early 1993, to 75° W. These temporary services, called respectively Atlantic Data Coverage (ADC) and Extended-ADC (XADC), had the primary purpose of supporting the monitoring of severe weather events such as hurricanes. Following the requirements of the Indian Ocean Experiment (INDOEX) (Ramanathan et al., 1995), the Indian Ocean Data Coverage (IODC) mission was established and Meteosat-5 has been moved in 1997 to 63° E. MVIRI data acquired at this position are available from middle 1998 to 2007. As a continuation of

the IODC mission, Meteosat-7 has been positioned at 57.5° E from where it acquires data since November 2006. Detailed information about the MSA dataset availability is given in Table 2. The dataset can be requested from the EUMETSAT Data Centre (<https://eoportal.eumetsat.int>) free of charge after registration. Users can request the product in the Binary Universal Form for the Representation of Meteorological data (BUFR) and in Hierarchical Data Format 4 (HDF4) formats. User documentation, consisting of an Algorithm Theoretical Base Document (ATBD), Product User Guide (PUG) and Validation Report (VR), is available for downloading on the EUMETSAT web page.

3.2 Validation data

In-situ measurements and a different satellite derived albedo product have been used for assessing the impact of non removed clouds. Ground measurements from the Southern African Regional Science Experiment (SAFARI) campaign (Privette et al., 2005) have been compared with MSA retrievals over a tropical forest site in Africa. A comparison over a larger area has been performed using the surface albedo dataset (Geiger et al., 2008) generated using imagery acquired from the Spinning Enhanced Visible and Infrared Imager (SEVIRI) radiometer onboard Meteosat Second Generation (MSG) satellites at the EUMETSAT Land Surface Analysis Satellite Application Facility (LSA SAF) (Trigo et al., 2011). The SEVIRI cloud mask takes advantage of the instrument's better spectral resolution and its 15 min temporal frequency increases the chances of gathering clear sky observation. DHR values are estimated at local noon for the MSG SAF dataset and at a default solar zenith angle of 30° in the case of the MSA CDR. As reference for assessing the impact of the uncertainty in the retrieval due to aerosol estimation, 18 stations (in Europe, Africa and the Arabic peninsula) of the AEROSOL ROBOTIC NETWORK (AERONET) (Holben et al., 1998) have been used. The AERONET Aerosol Optical Depth (AOD), which is specified for 675 nm, was referenced to 550 nm (reference wavelength of the MSA AOD) by using the Angstrom coefficient derived from concurrent observations at 870 nm. The so reformatted AERONET values were then averaged to match the 10 day MSA periods.

EUMETSAT Meteosat Surface Albedo Climate Data Record

A. Lattanzio et al.

Title Page

Abstract

Introduction

Conclusions

References

Tables

Figures



Back

Close

Full Screen / Esc

Printer-friendly Version

Interactive Discussion



4 Temporal consistency

The confidence level on the temporal stability of a Data Record is fundamental to assess the existence of temporal trends. One way to assess this aspect is to select a set of stable targets, e.g., desert locations and analyse the white and black sky albedo retrievals over multiple years. The time series for four desert targets are shown in Figs. 1–4. The visible channels of the MVIRI instrument on board the MFG series are slightly different (e.g. Lattanzio et al., 2013) and a spectral conversion is necessary to compare them. The coefficients proposed by Loew and Govaerts (2010) have been applied to convert the spectral albedo into a common broad band (0.3–3.0 μm) value. The individual time series of both ODEG and IODC are very homogeneous. Especially the central Saharan sites “Libya” and “Egypt One” and, to a slightly lesser degree also “Murzuq Desert” appears to be extremely stable (see Table 3). A similar stability is observed for further sites in both arid and non-arid areas (Fell et al., 2012). An exception is represented by the “Omani Desert” site (Fig. 4). In this case a trend towards increasing surface albedo is found, especially for IODC retrievals. The same site is also showing a bias between the ODEG and IODC. The origin for such a bias can very likely be traced back to the different observation geometry. Those differences may lead to systematic deviation in the DHR retrieval that can reach values of up to 10 and up to 20% for BHR_{ISO} . Apart from the specific mentioned cases, the results of the regression analysis shown in Table 3 indicate that the temporal stability of the MSA CDR is generally better than ± 0.01 per decade, matching the GCOS requirements.

5 Uncertainty assessment

The uncertainty assessment focused on the impact of aerosol and undetected clouds. Aerosol retrieval is particularly challenging over bright surfaces because the contributions to the radiometric quantities measured from aerosol and surface albedo show very similar patterns. Undetected clouds lead to a systematic overestimation of sur-

AMTD

8, 7535–7571, 2015

EUMETSAT Meteosat Surface Albedo Climate Data Record

A. Lattanzio et al.

Title Page

Abstract

Introduction

Conclusions

References

Tables

Figures



Back

Close

Full Screen / Esc

Printer-friendly Version

Interactive Discussion



EUMETSAT Meteosat Surface Albedo Climate Data Record

A. Lattanzio et al.

Title Page

Abstract

Introduction

Conclusions

References

Tables

Figures



Back

Close

Full Screen / Esc

Printer-friendly Version

Interactive Discussion



face albedo above both dark and bright surfaces, though the issue is more relevant on tropical forest due to the higher mean cloud coverage. Because the retrieval of surface albedo and AOD is jointly performed, an overestimation (underestimation) of the aerosol contribution leads to an underestimation (overestimation) of the surface contribution. The impact of an incorrect estimation of the aerosol contribution was assessed through the comparison of MSA AOD estimates against measurements taken at AERONET stations. In general there is good agreement between MSA and AERONET AOD, even though MSA is based on a simple continental aerosol model. MSA retrieval is bound to discrete AOD values in the range between 0.1 and 1.0. As a result, MSA will tend overestimating the AOD in cases where the real value is < 0.1. MSA seems to underestimate AOD for values above 0.5. It should be pointed out that this statement is based on a limited number of observations. Statistically, the AODs from IODC and ODEG show a very similar performance against AERONET (see Fig. 5).

In the current MSA implementation no external ancillary cloud mask information is applied. In the first retrieval step, a simple procedure is applied to detect clouds and cloud shadows (Pinty et al., 2000b). This procedure analyses statistically the daily variation of Top of Atmosphere Bi-directional Reflectance Factors (ToA BRF) in order to detect values deviating from the expected values in case of clear sky conditions. The impact of undetected clouds emerges from the comparison between the MSA products with satellite and in-situ measurements. A comparison between MSA and MSG SAF black-sky albedo retrievals for barren and evergreen broadleaf surface types, representative of tropical forest and desert sites is shown respectively in Figs. 6 and 7. The results clearly reveal that the cloud detection procedure is not adequate for patterns with persistent cloud cover during the day such as in the evergreen broadleaf forest areas. This is evident from Fig. 7 where the long tail of high MSA albedo retrievals is not mirrored in the SEVIRI dataset. This effect is absent in the case of barren surface type. On the other hand, the comparison over the latter reveals a conditional bias, with

deviations from the 1 : 1 line increasingly higher for brighter surfaces. Figure 6 also shows that this effect increases with viewing angle.

The MSA dataset has been compared with in-situ measurements acquired during the SAFARI campaign (Privette et al., 2005). This comparison does not focus on the quantitative analysis of the difference in the retrieval but aims to highlight the issue related with not removed cloudy pixels in the case of the MSA CDR. MSA products derived for the ODEG and IODC missions have been analysed for a site located in Mongu (Zambia) for years 2000, 2001, 2002. The BHR (blu-sky albedo) is the quantity measured by the in-situ instrument. Blue sky albedo values are expected to lie between the corresponding BHR_{iso} and DHR one (Pinty et al., 2005). This expected behaviour is confirmed in most of the cases for the ODEG mission (Fig. 8) and for the IODC mission (Fig. 9). The decrease in accuracy and precision of the retrieval in winter, during the rainy season, is expected and is due to undetected clouds in the MSA CDR.

6 Quality improvement

One clear outcome of the validation study is that the most relevant issue impacting the quality of the MSA CDR is the partial failure in detecting clouds. A twofold strategy has been designed for tackling the problem. The first part relies on a robust and reliable Cloud Masking scheme applied during the surface albedo retrieval. The second part of the strategy, referred as Cloud Removal and applicable only after the generation of the complete Data Record, exploits the information in the time domain included in the natural albedo seasonal variation in order to detect and remove outliers.

6.1 Cloud masking

Two different cloud masks have been generated and tested. The first one is derived using a simple method exploiting the MVIRI VIS band only. Analysing all images acquired during a full month a BRF background map for each image acquisition interval

Title Page

Abstract

Introduction

Conclusions

References

Tables

Figures



Back

Close

Full Screen / Esc

Printer-friendly Version

Interactive Discussion



(30 min for MVIRI) is build up. In a second step all MVIRI images for that month are compared with the previously generated background to detect outliers due to cloud coverage (background Cloud Mask, BCK CM) using a simple threshold method. The second cloud mask (CMSAF CM) has been generated as prototype by the Satellite Application Facility on Climate Monitoring CM SAF (Khlopenkov and Trishchenko, 2007; Fontana, 2010). This procedure uses both the visible and the thermal band at 10.8 μm . Common to both methods is that they can be in principle applied to all past and present GEO satellites (MSG, GOES, GMS, MTSAT). This aspect is particularly relevant if considering the application within the SCOPE-CM Framework.

The comparison of albedo estimates obtained with different cloud screening approaches for a tropical rain forest region (Fig. 10) sensed under a small view zenith angle (VZA) shows that the impact of using a cloud mask has significantly reduced the number of DHR values above 0.4. Since vegetated areas are generally characterized by low albedo, DHR above 0.4 are unrealistic and most likely due to undetected clouds. It is worth noting that this effect is more evident when using the CMSAF CM (bottom left panel) than with the simple BCK CM (bottom middle panel). The added value of the CMSAF CM exploiting both the visible and the infrared channels over the simple BCK CM based on the visible channel only is to better constrain the DHR values on the range below 0.4 (bottom right panel). It can also be noted how the pattern of the scatter plot is similar to the comparison shown in Fig. 7 between the MSA CDR (with no cloud mask) and the SEVIRI based albedo dataset. As expected, cloud masking has a very marginal effect on desert region (Fig. 11) where clear sky conditions dominate. The analysis for another tropical rain forest region sensed under large VZA (Fig. 12) shows that the use of a cloud mask efficiently removes unrealistically high albedo values caused by cloud contamination, leading to a significant decrease of the number of retrieved DHR values as shown in Table 4. Again, the effect is much more pronounced when using the CM SAF CM. This result is not surprising as visible only cloud masking at high VZA is likely to fail due to decreased contrast at higher atmospheric path

AMTD

8, 7535–7571, 2015

EUMETSAT Meteosat Surface Albedo Climate Data Record

A. Lattanzio et al.

Title Page

Abstract

Introduction

Conclusions

References

Tables

Figures



Back

Close

Full Screen / Esc

Printer-friendly Version

Interactive Discussion



lengths. The fewer but more reliable retained DHR observations will likely increase the overall quality of the Data Record.

6.2 Cloud removal

The exploitation of a cloud mask for the generation of high quality surface albedo is fundamental and has shown very positive impact on the retrieval. Unfortunately, due to the limited spectral and spatial information provided by MVIRI, a non-negligible number of cloud-affected observations will not be identified as such. Undetected clouds can be removed in a post-processing approach. One strategy is to exploit the information contained in surface albedo time series covering several years. Under normal conditions surface properties remain relatively stable over multiple years, respecting a natural seasonal variation. This assumption might not hold if in a certain year an area had suffered from natural or anthropogenic extreme events (wild fires, flood or droughts). Nevertheless such events can be considered statistically not significant and treated as outliers. The proposed strategy relies on the creation of broadband (0.3–3.0 μm) seasonal DHR maps to be used as a climatological background and it is performed in three steps. In the first step for each pixel i in the processed region of interest (ROI), the time series including all available periods t in the time range 1982 to 2002 (TR) is analysed. Due to the fact that the VIS band of the MVIRI instruments on board the MFG platforms are different (e.g. Lattanzio et al., 2013) a spectral to broadband conversion is necessary for comparing them. The conversion has been performed using the coefficients proposed by Loew and Govaerts (2010). If the broadband DHR value in the time series for the pixel i in the ROI and period t in TR is noted as $\text{DHR}^{\text{BB}}(i, t)$ and referring the temporal mean value as $\overline{\text{DHR}^{\text{BB}}(i)}$ and standard deviation as $\sigma^{\text{BB}}(i)$, the ensemble $\mathcal{L}_n(i)$ of retrievals classified as potentially cloud contaminated and removed as noise for the pixel i satisfies the condition:

$$\mathcal{L}_n(i) = \left\{ \text{DHR}^{\text{BB}}(i, t) > \overline{\text{DHR}^{\text{BB}}(i)} + 3\sigma^{\text{BB}}(i) \right\}; \quad \forall t \in \text{TR}, \quad (1)$$

7546

Title Page

Abstract

Introduction

Conclusions

References

Tables

Figures



Back

Close

Full Screen / Esc

Printer-friendly Version

Interactive Discussion



EUMETSAT Meteosat Surface Albedo Climate Data Record

A. Lattanzio et al.

Title Page

Abstract

Introduction

Conclusions

References

Tables

Figures



Back

Close

Full Screen / Esc

Printer-friendly Version

Interactive Discussion



assuming a normal distribution and an upper cutoff of 3σ . The standard deviation and the mean value can be affected by outliers if they are a significant population in the data distribution. For this reason sometimes the median and mean absolute deviation are used as they are not affected by outliers, resulting in a more selective filter. At this stage the usage of mean and standard deviation has been preferred to limit the retrievals treated as outliers. As a result of this step, intermediate “de-noised” MSA DHR products are created for the full ROI of each period t in TR. These products are a copy of the original MSA dataset but with all retrievals satisfying Eq. (1) removed. In the second step the seasonal DHR background maps are created. The 12 months in the year are grouped in four seasons: DJF (December, January, February), MAM (March, April, May), JJA (June, July, August) and SON (September, October, November). All the “de-noised” retrievals $DHR_d^{BB}(i, t_s)$ in each of the four groups are averaged, using the estimated DHR uncertainty δ_{DHR} (Govaerts and Lattanzio, 2007) as weight. For each pixel i the background value writes:

$$DHR_{bck}^{BB}(i, s) = \frac{\sum_{t_s} DHR_d^{BB}(i, t_s) (1/\delta_{DHR}(i, t_s))}{\sum_{t_s} 1/\delta_{DHR}(i, t_s)}; \quad s = 1, \dots, 4, \quad (2)$$

where s is the season index and t_s is the index running on all periods t included in season s . Retrievals with lower uncertainty will have a higher relevance in the calculation of the average value. An example of such background maps for the same ROI in Africa analysed in Fig. 10 is given in Fig. 13. The third and final step consists in screening the cloudy pixel out from the original MSA products. A simple threshold method has been adopted. For each period t the ensemble $\mathcal{L}_c(t)$ of the retrievals removed because potentially cloud contaminates satisfies the condition:

$$\mathcal{L}_c(t) = \left\{ DHR^{BB}(i, t) > (1 + T) DHR_{bck}^{BB}(i, s) \right\}; \quad \forall i \in ROI, \quad (3)$$

where $DHR_{bck}^{BB}(i, s)$ is the the background value for pixel i and season s (see Eq. 2) and T is the threshold. An example of cloud screening achieved with this method for

AMTD

8, 7535–7571, 2015

EUMETSAT Meteosat Surface Albedo Climate Data Record

A. Lattanzio et al.

- The MSA Data Record agrees well with corresponding values from satellite-derived and ground-based observing systems under many observation conditions, and it presents a high temporal stability.
- There are some quality issues concerning cloud detection and aerosol related effects related to the use of a single continental aerosol type limited to a set of pre-defined load values.
- The strengths underline the already high value of the MSA CDR for climate applications. The weaknesses need to be considered for specific applications and shall be addressed in the context of a future re-processing.

The study has clearly demonstrated that, for historical satellites where less calibration information is available such as MVIRI, the MSA CDR shows a very good temporal stability despite all related caveats (higher sensor noise, lack of documentation). For most of the desert sites analysed the stability satisfies the GCOS requirement. The study has also highlighted some weaknesses needing to be addressed. In particular the presence of undetected clouds affects the overall quality of the Data Record. The current embedded method relying on the statistical analysis of the ToA BRF does not perform well in a situation of persistent cloud coverage. In order to address such drawback a twofold strategy has been designed. A first step consists of the introduction of a reliable cloud mask to remove most of the clouds prior to the generation of the full MSA CDR. Two different Cloud Masks have been used to generate MSA products for a particular period. These two datasets and the original one generated without any external Cloud Mask have been compared. The effect of the cloud mask is negligible in areas where cloud frequency is low (as it is the case of desert regions). The impact on vegetated areas is different according to the viewing geometry. Areas sensed under low view angles show an increase in the total number of retrievals. In the case of high view angles the effect of the cloud mask is to reduce the number of unrealistic high albedo values. In a second step the temporal and seasonal information included in the dataset has been exploited. The applied method shows good potentialities for remov-

Title Page	
Abstract	Introduction
Conclusions	References
Tables	Figures
◀	▶
◀	▶
Back	Close
Full Screen / Esc	
Printer-friendly Version	
Interactive Discussion	



ing spurious cloud contaminated pixels, though such an approach should be carefully assessed because it might lead to remove good retrievals but will provide the users with a more robust and reliable Data Record.

Acknowledgements. A preliminary version of the CM SAF Cloud Fractional Cover (CFC) dataset was provided by MeteoSwiss to EUMETSAT as part of their engagement within the EUMETSAT's Satellite Application Facility on Climate Monitoring (CM SAF) and SCOPE-CM.

References

Cescatti, A., Marcolla, B., Vannan, S. K. S., Pan, J. Y., Roman, M. O., Yang, X., Ciaï, P., Cook, R. B., Law, B. E., Matteucci, G., Migliavacca, M., Moors, E., Richardson, A. D., Seufert, G., and Schaaf, C. B.: Intercomparison of MODIS albedo retrievals and in situ measurements across the global FLUXNET network, *Remote Sens. Environ.* 121, 323–334, 2012. 7540

EUMETSAT: *Meteosat First Generation User Handbook*, available at: <http://www.eumetsat.int/website/home/Data/TechnicalDocuments/index.html?lang=EN>, (last access: July 2015), 40 pp., 2011. 7537

Fang, H., Liang, S., Kim, H.-Y., Townshend, J. R., Schaaf, C. L., Strahler, A. H., and Dickinson, R. E.: Developing a spatially continuous 1km surface albedo data set over North America from Terra MODIS products, *J. Geophys. Res.*, 112, D20206, doi:10.1029/2006JD008377, 2007. 7548

Fell, F., Bennartz, R., Cahill, B., Lattanzio, A., Muller, J.-P., Schulz, J., Shane, N., Trigo, I., and Watson, G.: Evaluation of the Meteosat Surface Albedo Climate Data Record (ALBEDOVAL), Final Report, 119 pp., available at: <http://www.eumetsat.int/website/home/Data/ClimateService/index.html> (last access: July 2015), 2012. 7537, 7540, 7542

Fontana, F.: Evaluation of a probabilistic cloud masking algorithm for climate data record processing: Sparc: a new scene identification algorithm for msg seviri, *Visiting Scientist Report 14*, EUMETSAT Satellite Application Facility on Climate Monitoring, 2010. 7545

Forster, P., Ramaswamy, V., Artaxo, P., Berntsen, T., Betts, R., Fahey, D. W., Haywood, J., Lean, J., Lowe, D. C., Myhre, G., Nganga, J., Prinn, R., Raga, G., Schulz, M., and Van Dorland, R.: Changes in atmospheric constituents and in radiative forcing, in: *Climate Change, The*

EUMETSAT Meteosat Surface Albedo Climate Data Record

A. Lattanzio et al.

Title Page

Abstract

Introduction

Conclusions

References

Tables

Figures



Back

Close

Full Screen / Esc

Printer-friendly Version

Interactive Discussion



EUMETSAT Meteosat Surface Albedo Climate Data Record

A. Lattanzio et al.

Title Page

Abstract

Introduction

Conclusions

References

Tables

Figures



Back

Close

Full Screen / Esc

Printer-friendly Version

Interactive Discussion



Physical Science Basis. Contribution of Working Group I to the Fourth Assessment Report of the Intergovernmental Panel on Climate Change, edited by: Solomon, S. et al., Cambridge Univ. Press, Cambridge, UK, 2007. 7537

5 Geiger, B., Carrer, D., Franchistéguy L., Roujean, J. L., and Meurey, C.: Land surface Albedo derived on a daily basis from Meteosat second generation observations, IEEE T. Geosci. Remote, 46, 3841–3856, 2008. 7541

GCOS: GCOS-138 Implementation Plan for the Global Observing System for Climate in Support of the UNFCCC, GCOS-138, 180 pp., 2010. 7537

10 GCOS: GCOS-154 Systematic Observation Requirements for Satellite-based Products for Climate Supplemental details to the satellite-based component of the Implementation Plan for the Global Observing System for Climate in Support of the UNFCCC – 2011 Update, WMO, Geneva, Switzerland, 2011. 7539, 7554

15 Govaerts, Y. M. and Lattanzio, A.: Retrieval error estimation of surface albedo derived from geostationary large band satellite observations: application to Meteosat-2 and -7 data. J. Geophys. Res., 112, D05102, doi:10.1029/2006JD007313, 2007. 7538, 7547

Govaerts, Y. M. and Lattanzio, A.: Estimation of surface albedo increase during the eighties Sahel drought from Meteosat observations, Global Planet. Change, 64, 139–145, doi:10.1016/j.gloplacha.2008.04.004, 2008. 7548

20 Govaerts, Y. M., Lattanzio, A., Taberner, M., and Pinty, B.: Generating global surface albedo products from multiple geostationary satellites, Remote Sens. Environ., 112, 2804–2816, 2008. 7539

Hansen, J., Sato, M., and Ruedy, R.: Radiative forcing and climate response. J. Geophys. Res., 102, 6831–6864, 1997. 7537

25 Henderson-Sellers, A. and Wilson, M. F.: Surface albedo data for climatic modelling, Rev. Geophys. Space Ge., 21, 1743–1778, 1983. 7537

Holben, B. N., Eck, T. F., Slutsker, I., Tanre, D., Buis, J. P., Setzer, A., Vermote, E., Reagan, J. A., Kaufman, Y., Nakajima, T., Lavenu, F., Jankowiak, I., and Smirnov, A.: AERONET-A federated instrument network and data archive for aerosol characterization, Remote Sens. Environ., 66, 1–16, 1998. 7541

30 Khlopenkov, K. V. and Trishchenko, A. P.: SPARC: new cloud, snow, and cloud shadow detection scheme for historical 1 km AVHRR data over Canada, J. Atmos. Ocean. Tech., 24, 322–343, 2007. 7545

EUMETSAT Meteosat Surface Albedo Climate Data Record

A. Lattanzio et al.

Title Page

Abstract

Introduction

Conclusions

References

Tables

Figures



Back

Close

Full Screen / Esc

Printer-friendly Version

Interactive Discussion



Lattanzio, A., Govaerts, Y. M., and Pinty, B.: Consistency of surface anisotropy characterization with Meteosat observations, *Adv. Space & Earth Res.*, 39, 131–135, doi:10.1016/j.asr.2006.02.049, 2006. ===== Res., 39, 131–135, doi:10.1016/j.asr.2006.02.049, 2006. >>>>>> .r6147 7538

5 Lattanzio, A., Schulz, J., Matthews, J., Okuyama, A., Theodore, B., <<<<<<< .mine Bates, J. J., Knapp, K. R., Kosaka, Y., and Schüller L.: Land surface Albedo from geostationary satellites: a multi-agency collaboration within SCOPE-CM, *B. Am. Meteorol. Soc.*, 94, 205–214, doi:10.1175/BAMS-D-11-00230.1, 2013. ===== Bates, J. J., Knapp, K. R., Kosaka, Y., and Schüller L.: Land surface Albedo from geostationary satellites: a multi-agency collaboration within SCOPE-CM, *B. Am. Meteorol. Soc.*, 94, 205–214, doi:10.1175/BAMS-D-11-00230.1, 2013. >>>>>> .r6147 7539, 7542, 7546

Loew, A.: Terrestrial satellite records for climate studies: how long is long enough? *Theor. Appl. Climatol.*, 115, 427–440, doi:10.1007/s00704-013-0880-6, 2014. 7539

Loew, A. and Govaerts, Y.: Towards multidecadal consistent meteosat surface albedo time series, *Remote Sens.*, 2, 957–967, doi:10.3390/rs2040957, 2010. 7542, 7546, 7558

15 Martonchik, J., Diner, D., Pinty, B., Verstraete, M., Myneni, R., Knyazikhin, Y., and Gordon, H.: Determination of land and ocean reflective, radiative, and biophysical properties using multi-angle imaging, *IEEE T. Geosci. Remote*, 36, 1266–1281, 1998. 7540

Ohmura, A., Dutton, E. G., Forgan, B., Fröhlich, C., Gilgen, H., Hegner, H., Heimo, A., König-Langlo, G., McArthur, B., Müller, G., Philipona, R., Pinker, R., Whitlock, C. H., Dehne, K., and Wild, M.: Baseline Surface Radiation Network (BSRN)/WCRP): new precision radiometry for climate research, *B. Am. Meteorol. Soc.*, 79, 2115–2136, 1998. 7540

Ohring, G., Wielicki, B., Spencer, R., Emery, W. J., and Datla, R.: Satellite instrument calibration for measuring global climate change: report of a workshop, *B. Am. Meteorol. Soc.*, 86, 1303–1313, 2005. 7539

25 Pielke, R. A. and Avissar, R.: Influence of landscape structure on local and regional climate, *Landscape Ecol.*, 4, 133–155, 1990. 7537

Pinty, B., Roveda, F., Verstraete, M. M., Gobron, N., Govaerts, Y., Martonchik, J. V., Diner, D. J., and Kahn, R. A.: Surface albedo retrieval from Meteosat: Part 1: Theory, *J. Geophys. Res.*, 105, 18099–18112, 2000a. 7538

30 Pinty, B., Roveda, F., Verstraete, M. M., Gobron, N., Govaerts, Y., Martonchik, J. V., Diner, D. J., and Kahn, R. A.: Surface albedo retrieval from Meteosat: Part 2: Applications, *J. Geophys. Res.*, 105, 18113–18134, 2000b. 7543

EUMETSAT Meteosat Surface Albedo Climate Data Record

A. Lattanzio et al.

Title Page

Abstract

Introduction

Conclusions

References

Tables

Figures



Back

Close

Full Screen / Esc

Printer-friendly Version

Interactive Discussion



Pinty, B., Lattanzio, A., Martonchik, J. V., Verstraete, M. M., Gobron, N., Taberner, M., Widowski, J.-L., Dickinson, R. E., and Govaerts, Y.: Coupling diffuse sky radiation and surface albedo, *J. Atmos. Sci.*, 62, 2580–2591, 2005. 7537, 7544

Privette, J. L., Mukelabai, M., Hanan, N., and Hao, Z.: SAFARI 2000 Surface Albedo and Radiation Fluxes at Mongu and Skukuza, 2000–2002, Data set, Oak Ridge National Laboratory Distributed Active Archive Center, Oak Ridge, Tennessee, USA, doi:10.3334/ORNDAAC/786, 2005. 7541, 7544

Ramanathan, V., Crutzen, P. J., Coakley, J., Dickerson, R., Heymsfield, A., Kiehl, J., Kley, D., Krishnamurti, T. N., Kuettner, J., Lelieveld, J., Mitra, A. P., Prospero, J., Sadourny, R., Valero, F. P. J., and Woodbridge, E. L.: Indian Ocean Experiment (INDOEX), White Paper, C4, Scripps Institution of Oceanography, UCSD, La Jolla, California 92093–0239, USA, 1995. 7540

Schaaf, C. B., Gao, F., Strahler, A. H., Lucht, W., Li, X. W., Tsang, T., Strugnell, N. C., Zhang, X. Y., Jin, Y. F., Muller, J. P., Lewis, P., Barnsley, M., Hobson, P., Disney, M., Roberts, G., Dunderdale, M., Doll, C., d'Entremont, R. P., Hu, B. X., Liang, S. L., Privette, J. L., and Roy, D.: First operational BRDF, albedo nadir reflectance products from MODIS, *Remote Sens. Environ.*, 83, 135–148, 2002. 7540

Schaaf, C. B., Cihlar, J., Belward, A., Dutton, E., and Verstraete, M.: Albedo and Reflectance Anisotropy, ECV-T8: GTOS Assessment of the Status of the Development of Standards for the Terrestrial Essential Climate Variables, edited by: Sessa, R., FAO, Rome, 2009. 7537

Schaepman-Strub, G., Schaepman, M. E., Painter, T. H., Dangel, S., and Martonchik, J. V.: Reflectance quantities in optical remote sensing – definitions and case studies, *Remote Sens. Environ.*, 103, 27–42, doi:10.1016/j.rse.2006.03.002, 2006. 7537

Trigo, I. F., DaCamara, C. C., Viterbo, P., Roujean, J.-L., Olesen, F., Barroso, C., Camacho-de Coca, F., Carrer, D., Freitas, S. C., García-Haro, J., Geiger, B., Gellens-Meulenberghs, F., Ghilain, N., Meliá, J., Pessanha, L., Siljamo, N., and Arboleda, A.: The satellite application facility on land surface analysis, *Int. J. Remote Sens.*, 32, 2725–2744, doi:10.1080/01431161003743199, 2011. 7541

EUMETSAT Meteosat Surface Albedo Climate Data Record

A. Lattanzio et al.

Title Page

Abstract

Introduction

Conclusions

References

Tables

Figures



Back

Close

Full Screen / Esc

Printer-friendly Version

Interactive Discussion



Table 1. Target requirements for the DHR and BHR_{iso} defined in GCOS-154 (2011).

Variable/Parameter	Temporal Resolution	Accuracy	Stability
Black Sky Albedo	Daily to Weekly	max(5 %; 0.0025)	max(1 %; 0.0001)
White Sky Albedo	Daily to Weekly	max(5 %; 0.0025)	max(1 %; 0.0001)

EUMETSAT Meteosat Surface Albedo Climate Data Record

A. Lattanzio et al.

Title Page	
Abstract	Introduction
Conclusions	References
Tables	Figures
◀	▶
◀	▶
Back	Close
Full Screen / Esc	
Printer-friendly Version	
Interactive Discussion	



Table 2. Overview of MVIRI observations history in standard operation mode. The coverage acronyms refer to Indian Ocean Data Coverage (IODC) and [Extended] Atlantic Data Coverage ([X]ADC). The corresponding sub-satellite points (SSP) are also indicated.

Coverage	SSP	Satellite	Start Date	End Date
ODEG	0°	M2	16 Aug 1981	11 Aug 1988
	0°	M3	11 Aug 1988	25 Jan 1991
	0°	M4	19 Jun 1989	4 Feb 1994
	0°	M5	2 May 1991	13 Feb 1997
	0°	M6	21 Oct 1996	20 Jan 2000
	0°	M7	3 Jun 1998	19 Jul 2006
IODC_63	63° E	M5	1 Jul 1998	16 Apr 2007
IODC_57	57° E	M7	1 Nov 2006	ongoing
ADC	50° W	M3	1 Aug 1991	27 Jan 1993
XADC	75° W	M3	21 Feb 1993	31 May 1995

EUMETSAT Meteosat Surface Albedo Climate Data Record

A. Lattanzio et al.

Table 3. Regression slopes for the four sites shown in Figs. 1–4. Values exceeding $\pm 0.01 \text{ decade}^{-1}$ are in bold. IODC data is restricted to the 63° coverage (MVIRI-5) to avoid potential effects caused by the different observation angles of IODC_63 and IODC_57.

Name	Location	ODEG		IODC	
		BHR _{iso} [1 decade^{-1}]	BHR _{iso} [1 decade^{-1}]	DHR [1 decade^{-1}]	DHR [1 decade^{-1}]
Murzuq desert	24.75° N, 12.50° E	–0.0084	0.0102	–0.0325	0.0099
Lybia	21.50° N, 28.50° E	0.0037	–0.0011	0.0085	–0.0011
Egypt one	27.12° N, 26.10° E	0.0083	–0.0006	0.0071	–0.0006
Omani desert	19.00° N, 55.50° E	0.0170	–0.0437	0.0133	–0.0421

Title Page

Abstract

Introduction

Conclusions

References

Tables

Figures



Back

Close

Full Screen / Esc

Printer-friendly Version

Interactive Discussion



**EUMETSAT Meteosat
Surface Albedo
Climate Data Record**

A. Lattanzio et al.

Title Page

Abstract

Introduction

Conclusions

References

Tables

Figures



Back

Close

Full Screen / Esc

Printer-friendly Version

Interactive Discussion

**Table 4.** Impact of a cloud mask applied to the MSA processing on the number of retrieved pixels (total and higher than a threshold of 0.4).

	Retrieved Pixels			Above threshold (0.4)		
	NO CM	CMSAF CM	BCK CM	NO CM	CMSAF CM	BCK CM
Forest (Africa)	90 %	92 %	91 %	1 %	0 %	0.01 %
Desert	100 %	100 %	100 %	47.9 %	47.7 %	47.9 %
Forest (South America)	51 %	17 %	36 %	15 %	0.03 %	1.2 %

EUMETSAT Meteosat Surface Albedo Climate Data Record

A. Lattanzio et al.

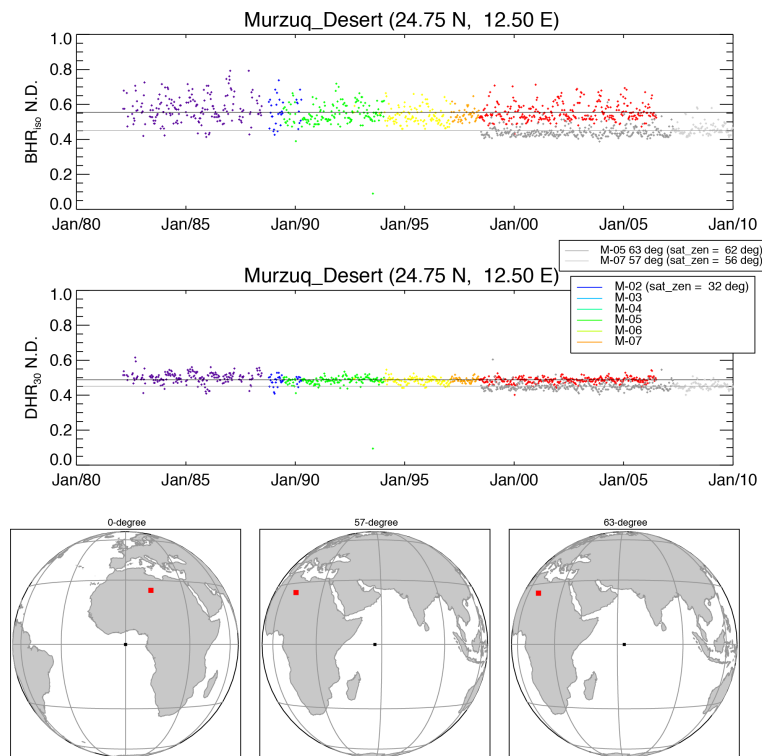


Figure 1. Long-term time series of BHR_{iso} (upper panel) and DHR (middle panel) for the site “Murzuq Desert”. The position of the target site on the respective 0° and IODC filed of view is shown in the bottom panel. The coloured dots refers to 0° coverage, the grey dots to IODC coverage. The dark and light-grey lines show the long-term averages for the two coverages. The spectral to broad band conversion coefficients from Loew and Govaerts (2010) have been applied.

Title Page

Abstract

Introduction

Conclusions

References

Tables

Figures



Back

Close

Full Screen / Esc

Printer-friendly Version

Interactive Discussion



EUMETSAT Meteosat Surface Albedo Climate Data Record

A. Lattanzio et al.

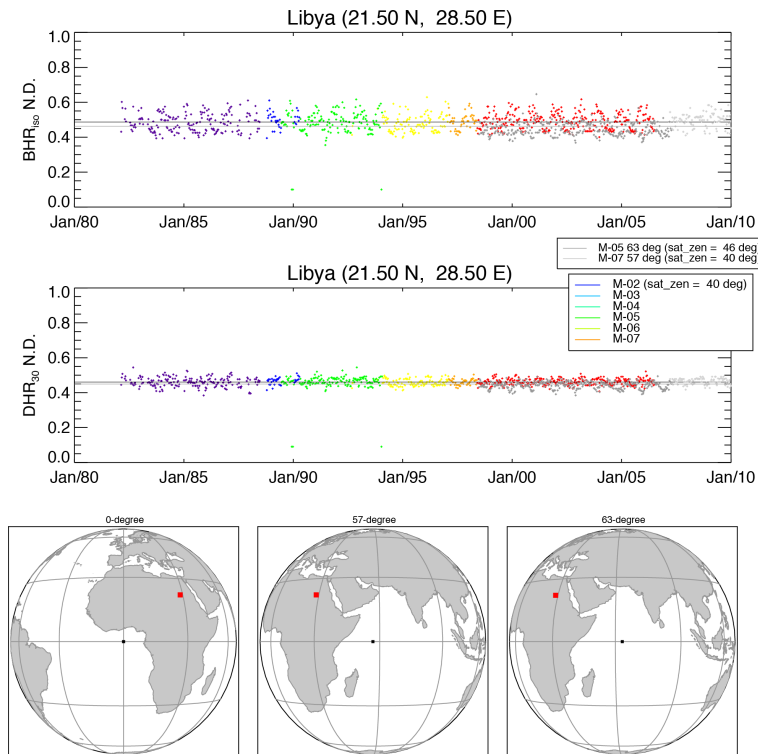


Figure 2. Same as Fig. 1 but for site “Libyan Desert”.

Title Page

Abstract

Introduction

Conclusions

References

Tables

Figures

◀

▶

◀

▶

Back

Close

Full Screen / Esc

Printer-friendly Version

Interactive Discussion



EUMETSAT Meteosat Surface Albedo Climate Data Record

A. Lattanzio et al.

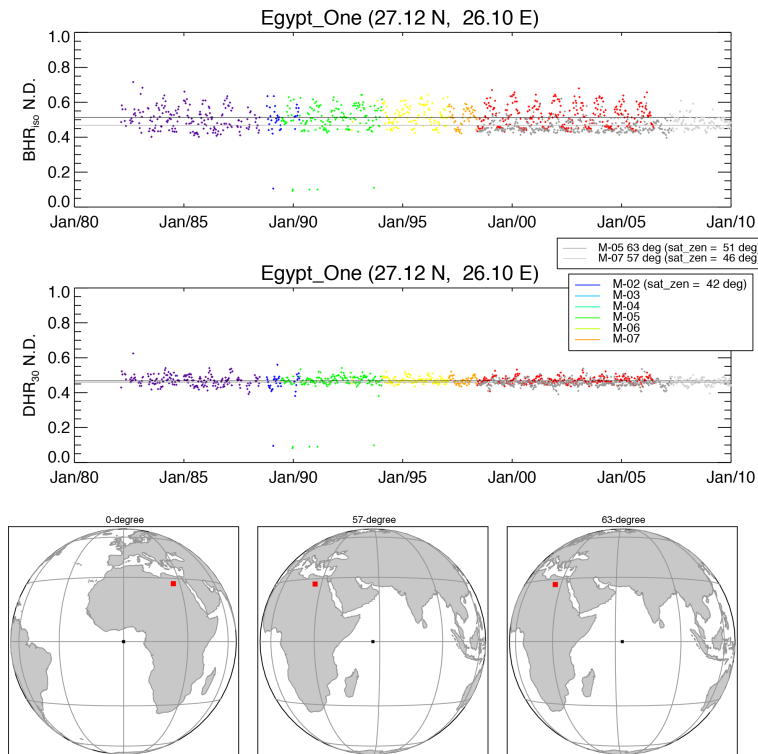


Figure 3. Same as Fig. 1 but for site “Egypt One”.

Title Page

Abstract

Introduction

Conclusions

References

Tables

Figures

◀

▶

◀

▶

Back

Close

Full Screen / Esc

Printer-friendly Version

Interactive Discussion



EUMETSAT Meteosat Surface Albedo Climate Data Record

A. Lattanzio et al.

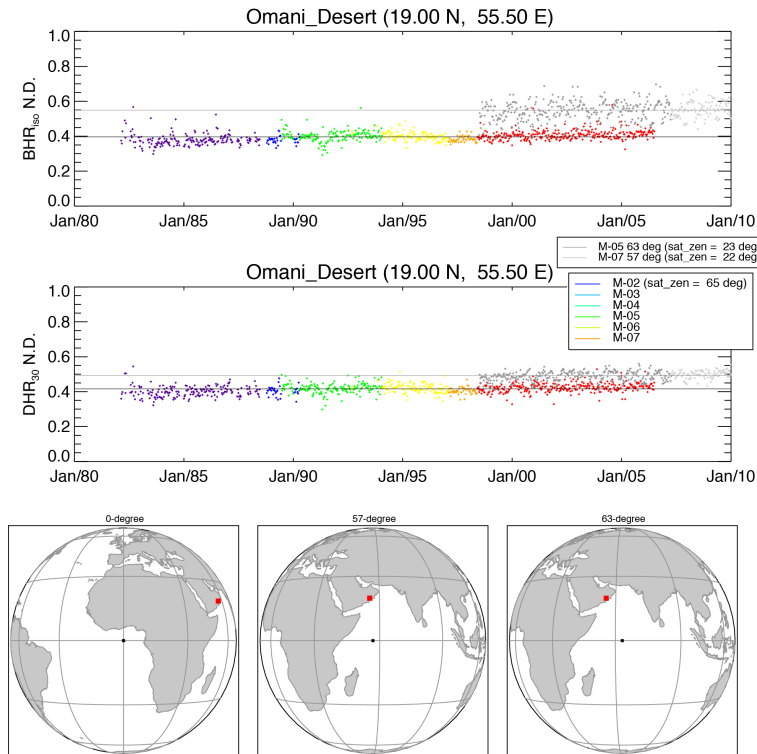


Figure 4. Same as Fig. 1 but for site “Omani Desert”.

Title Page	
Abstract	Introduction
Conclusions	References
Tables	Figures
◀	▶
◀	▶
Back	Close
Full Screen / Esc	
Printer-friendly Version	
Interactive Discussion	



EUMETSAT Meteosat Surface Albedo Climate Data Record

A. Lattanzio et al.

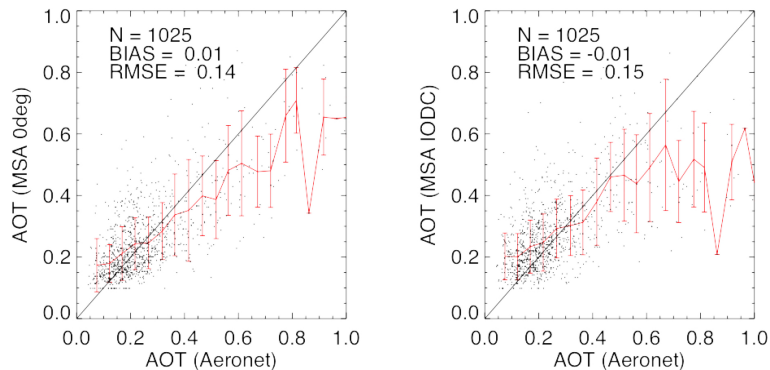


Figure 5. Comparison of AERONET and MSA aerosol optical depth (AOD). Left panel: 0DEG coverage, right panel: IODC_57 and IODC_63.

Title Page

Abstract

Introduction

Conclusions

References

Tables

Figures

⏪

⏩

◀

▶

Back

Close

Full Screen / Esc

Printer-friendly Version

Interactive Discussion



EUMETSAT Meteosat Surface Albedo Climate Data Record

A. Lattanzio et al.

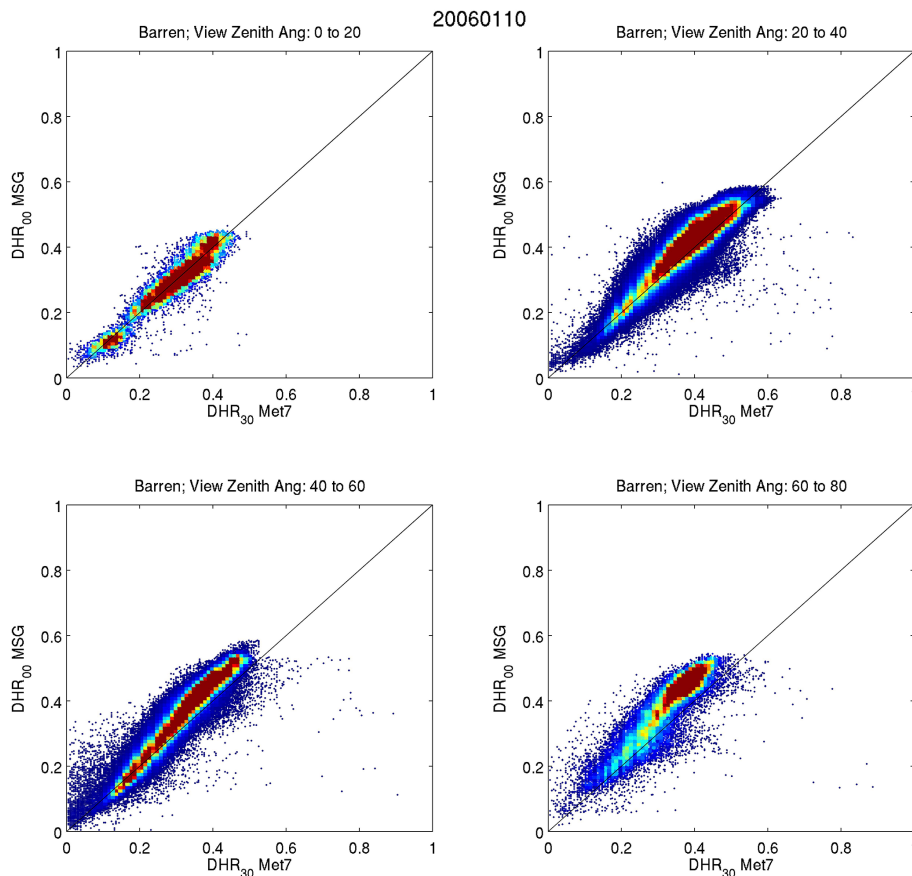


Figure 6. Scatterplots of MSA DHR30 (x axis) vs. SEVIRI DHR (y axis) for pixels classified as “Barren” for the 1–10 January 2006 period. Pixels are grouped according to MSA viewing angle ranges indicated in the top of each panel.

Title Page	
Abstract	Introduction
Conclusions	References
Tables	Figures
◀	▶
◀	▶
Back	Close
Full Screen / Esc	
Printer-friendly Version	
Interactive Discussion	



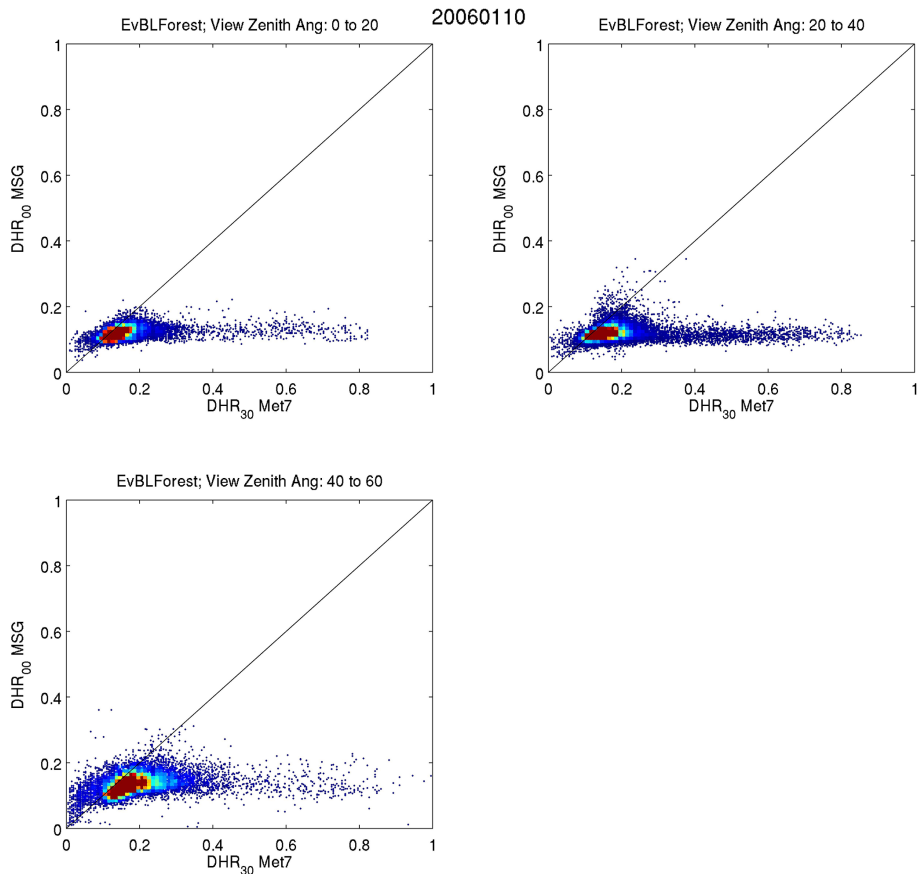


Figure 7. Same as Fig. 6 but for pixels classified as “evergreen broadleaf forest”. The impact of undetected cloud for the MSA CDR is clearly represented by the tail of high albedo values.

EUMETSAT Meteosat Surface Albedo Climate Data Record

A. Lattanzio et al.

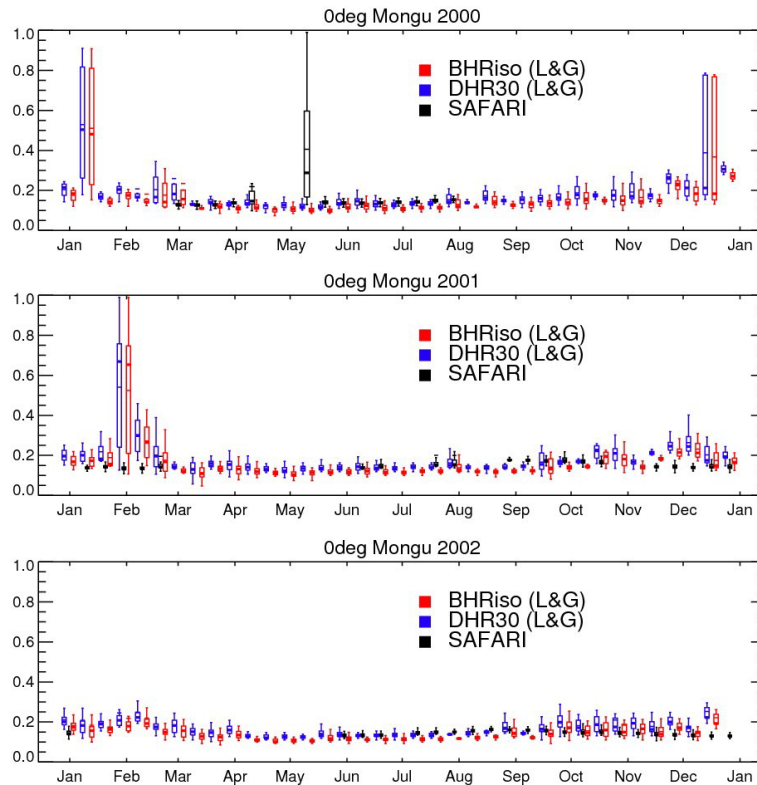


Figure 8. Comparison of MSA vs. in situ albedo observations for the 0DEG mission. The box-and-whisker diagrams represent the spatial variability of the MSA retrievals within a 3×3 window centred at Mongu (Zambia). For the in situ observations (black), the diagrams represent the temporal variability within a ten-day observation period.

[Title Page](#)
[Abstract](#)
[Introduction](#)
[Conclusions](#)
[References](#)
[Tables](#)
[Figures](#)

[Back](#)
[Close](#)
[Full Screen / Esc](#)
[Printer-friendly Version](#)
[Interactive Discussion](#)


EUMETSAT Meteosat Surface Albedo Climate Data Record

A. Lattanzio et al.

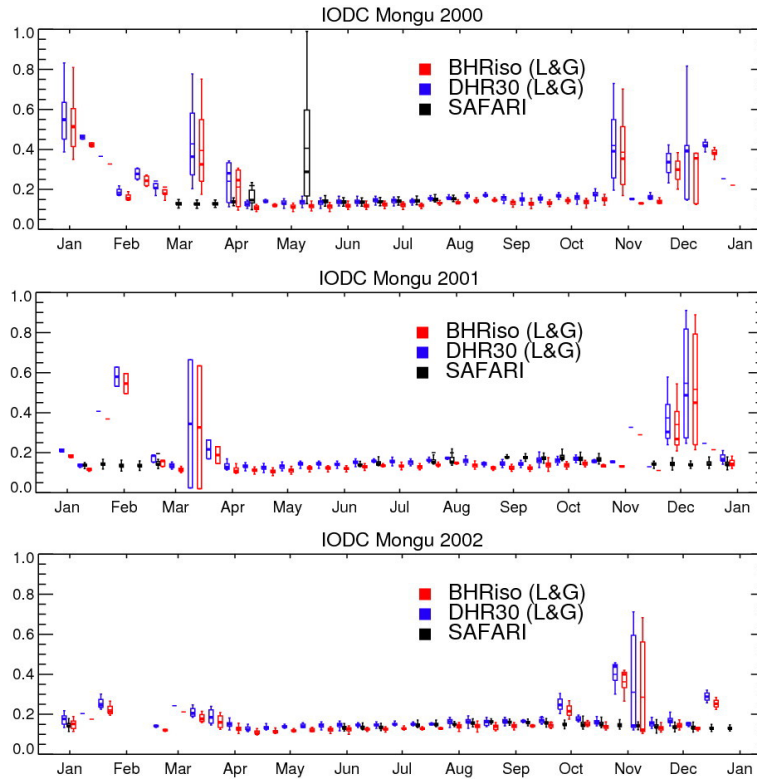


Figure 9. Same as Fig. 8 but for the IODC mission.

Title Page

Abstract

Introduction

Conclusions

References

Tables

Figures

◀

▶

◀

▶

Back

Close

Full Screen / Esc

Printer-friendly Version

Interactive Discussion



EUMETSAT Meteosat Surface Albedo Climate Data Record

A. Lattanzio et al.

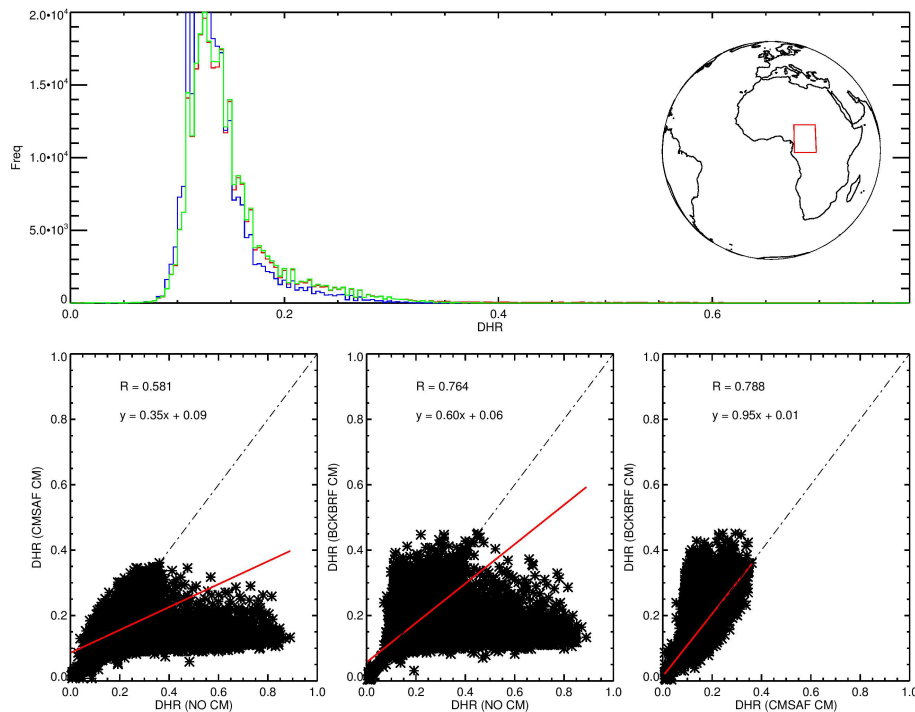


Figure 10. Tropical forest region viewed under a low view zenith angle. Upper panel: distributions of surface albedo retrieved with no cloud mask (NO CM; red), with a single band (VIS) cloud mask (BCK CM; green), and with the cloud mask developed by the CM SAF (CMSAF CM; blue). Lower panels: scatter plots of albedo estimates using the cloud mask scheme indicated in the respective x and y axis.

Title Page

Abstract

Introduction

Conclusions

References

Tables

Figures



Back

Close

Full Screen / Esc

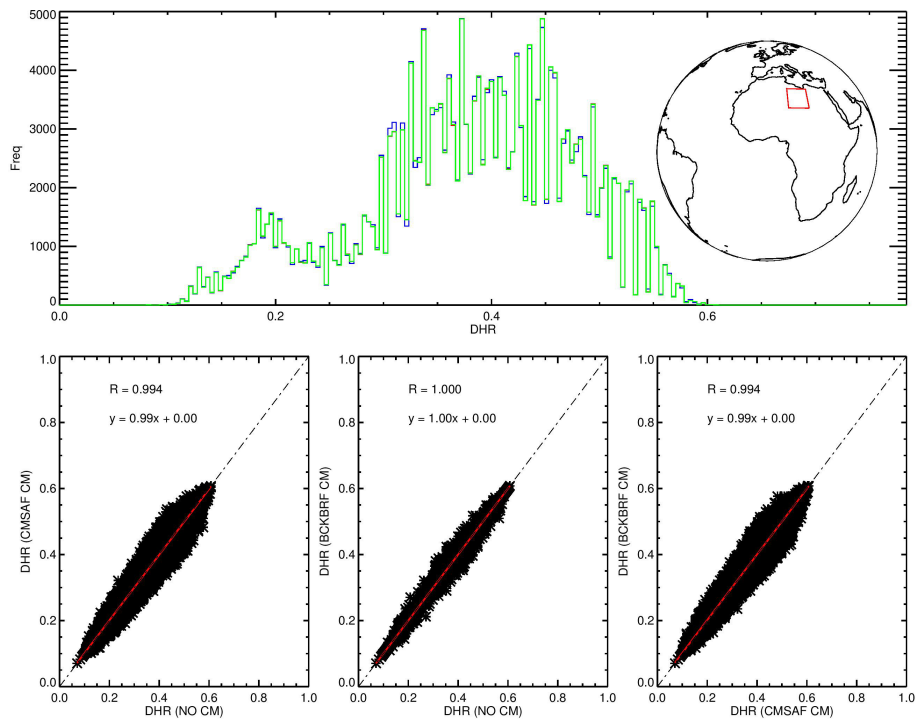
Printer-friendly Version

Interactive Discussion



**EUMETSAT Meteosat
Surface Albedo
Climate Data Record**

A. Lattanzio et al.

**Figure 11.** Same as Fig. 10 but for a desert area.[Title Page](#)[Abstract](#)[Introduction](#)[Conclusions](#)[References](#)[Tables](#)[Figures](#)[Back](#)[Close](#)[Full Screen / Esc](#)[Printer-friendly Version](#)[Interactive Discussion](#)

EUMETSAT Meteosat
Surface Albedo
Climate Data Record

A. Lattanzio et al.

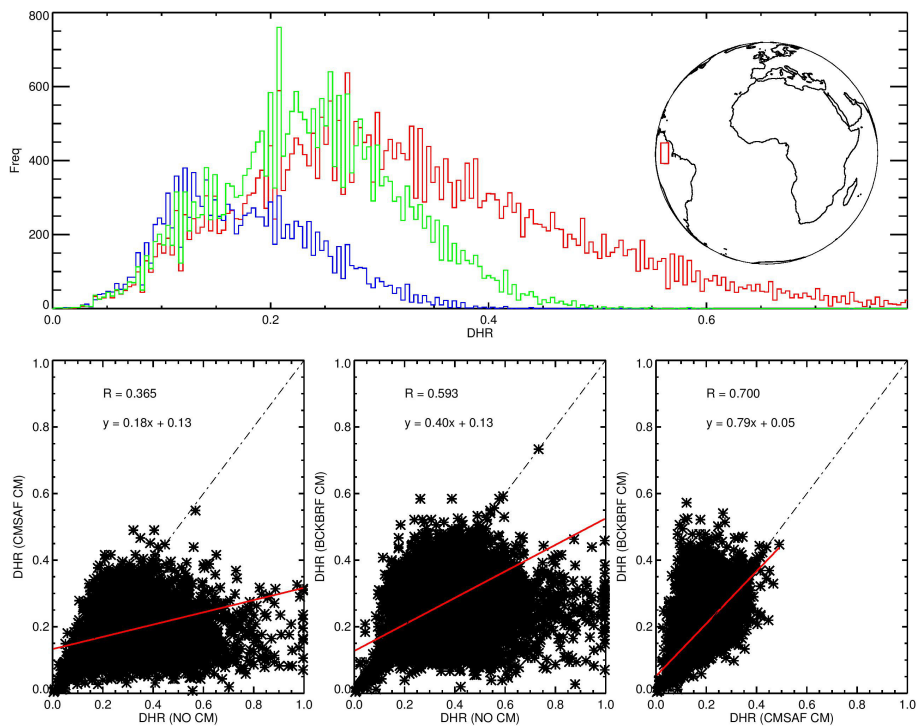


Figure 12. Same as Fig. 10 but for a tropical forest area viewed under high view zenith angle.

[Title Page](#)[Abstract](#)[Introduction](#)[Conclusions](#)[References](#)[Tables](#)[Figures](#)[Back](#)[Close](#)[Full Screen / Esc](#)[Printer-friendly Version](#)[Interactive Discussion](#)

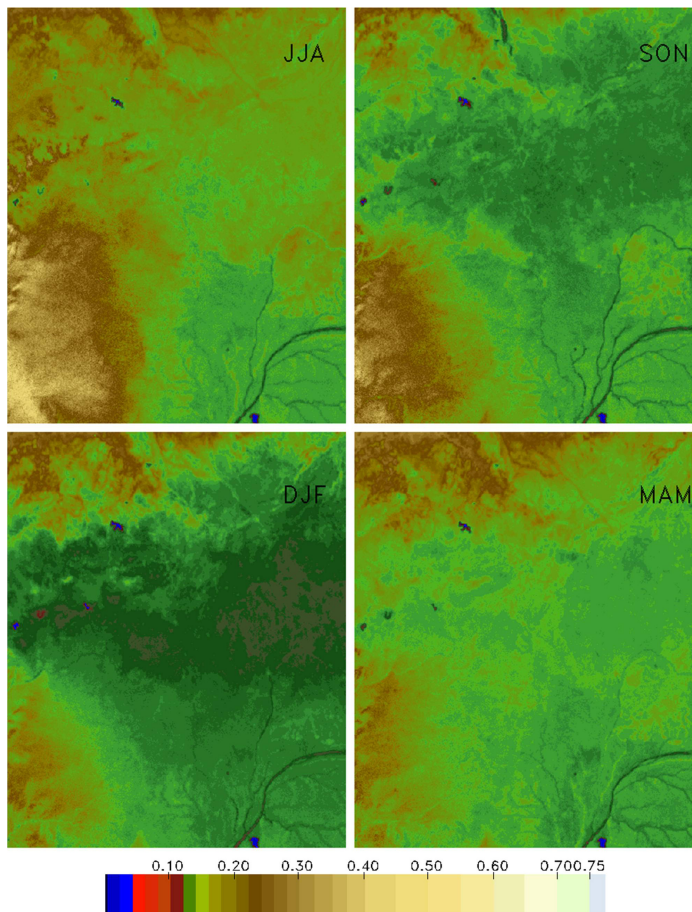


Figure 13. Background albedo maps for the four seasons. DJF (bottom left), MAM (bottom right), JJA (upper left) and SON (upper right).

Title Page

Abstract

Introduction

Conclusions

References

Tables

Figures



Back

Close

Full Screen / Esc

Printer-friendly Version

Interactive Discussion



**EUMETSAT Meteosat
Surface Albedo
Climate Data Record**

A. Lattanzio et al.

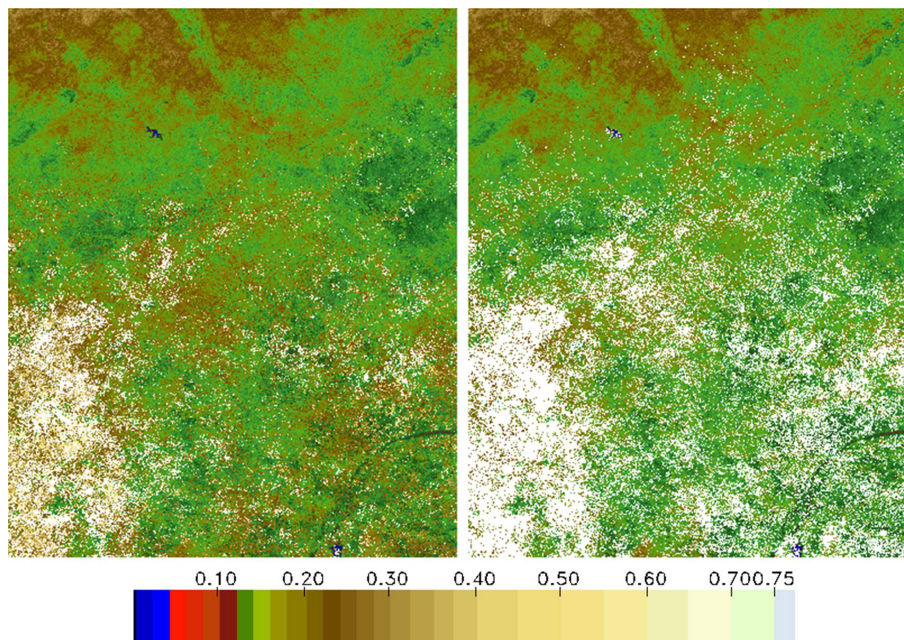


Figure 14. Cloud screening example for Meteosat-7. The period is 1–10 May 2001. The original MSA product is shown on the left panel and the cloud decontaminated one on the right panel.

[Title Page](#)[Abstract](#)[Introduction](#)[Conclusions](#)[References](#)[Tables](#)[Figures](#)[Back](#)[Close](#)[Full Screen / Esc](#)[Printer-friendly Version](#)[Interactive Discussion](#)