

Supplementary Figures S1 – S12 for

5 **A European - wide ²²²Radon and ²²²Radon progeny comparison study**

Dominik Schmithüsen¹, Scott Chambers², Bernd Fischer³, Stefan Gilge⁴, Juha Hatakka⁵, Victor Kazan⁶, Rolf Neubert⁷, Jussi Paatero⁵, Michel Ramonet⁶, Clemens Schlosser⁸, Sabine Schmid⁸, Alex Vermeulen⁹ and Ingeborg Levin¹

10

1: Institut für Umweltphysik (IUP), Heidelberg University, 69120 Heidelberg, Germany

2: Institute for Environmental Research (ANSTO), Lucas Heights, Australia

3: Umweltbundesamt (UBA), Meßstelle Schauinsland, Oberried, Germany

4: Deutscher Wetterdienst, Hohenpeißenberg (HPB), Hohenpeißenberg Germany

15

5: Finnish Meteorological Institution (FMI), Helsinki, Finland

6: Laboratoire des Sciences du Climat et de l'Environnement, LSCE/IPSL, CEA-CNRS-UVSQ, Université Paris-Saclay, Gif-sur-Yvette, France

7: Centrum voor IsotopenOnderzoek (CIO), ESRIG, University of Groningen, Groningen, The Netherlands

8: Bundesamt für Strahlenschutz (BfS), Freiburg, Germany

20

9: Energy research Centre of the Netherlands (ECN), Petten, The Netherlands, now at: ICOS ERIC - Carbon Portal, Lund, Sweden

Correspondence to: Ingeborg Levin (Ingeborg.Levin@iup.uni-heidelberg.de)

25

Cabauw 180m, 2012

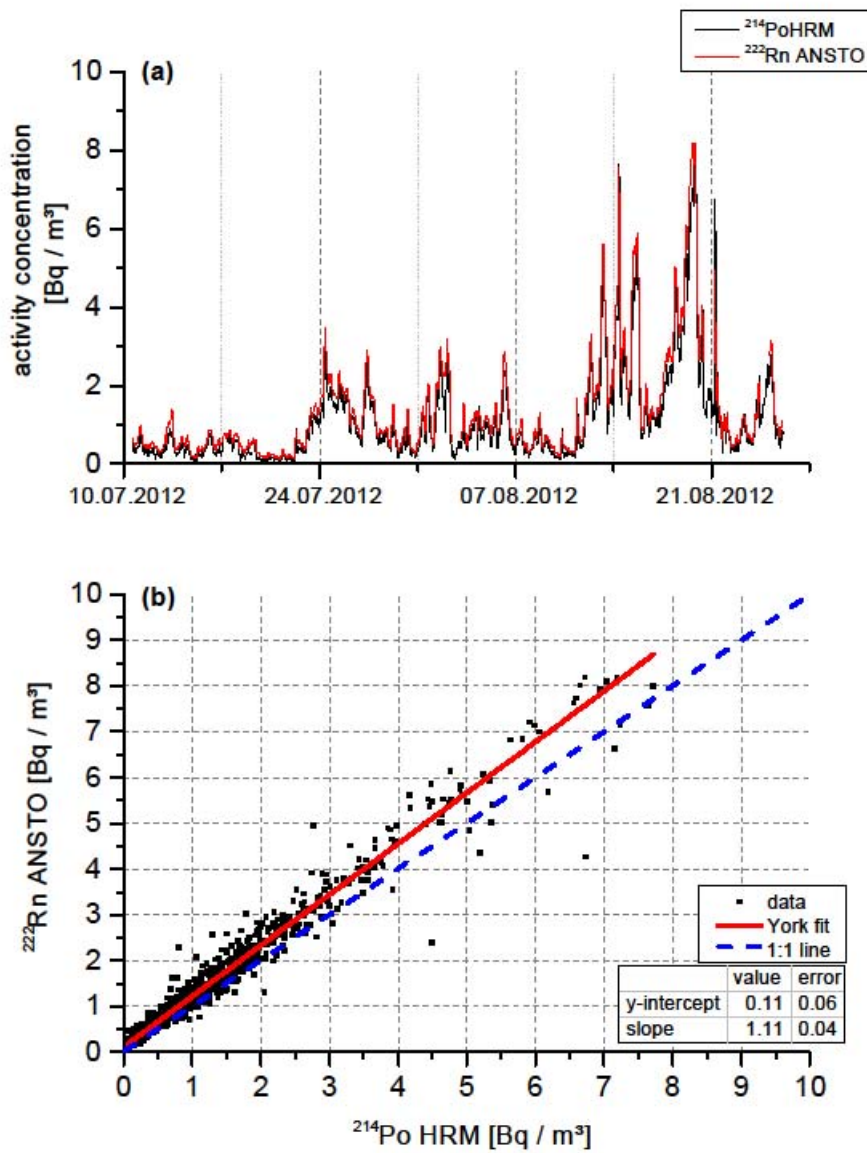


Figure S1: Comparison of Cabauw ANSTO ^{222}Rn at 200m with HRM ^{214}Po at 180m

Cabauw 20m, 2012

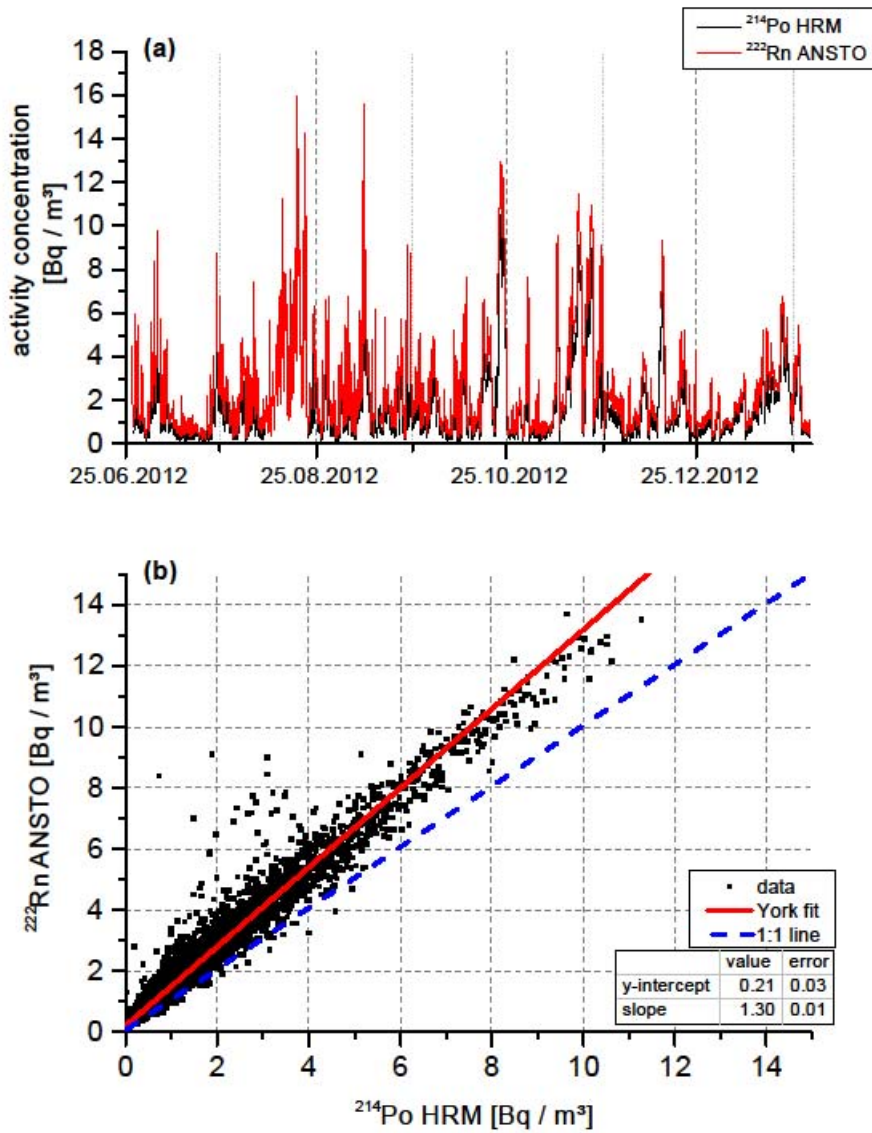


Figure S2: Comparison of Cabauw ANSTO ^{222}Rn with HRM ^{214}Po , both at 20m

Lutjewad 2007

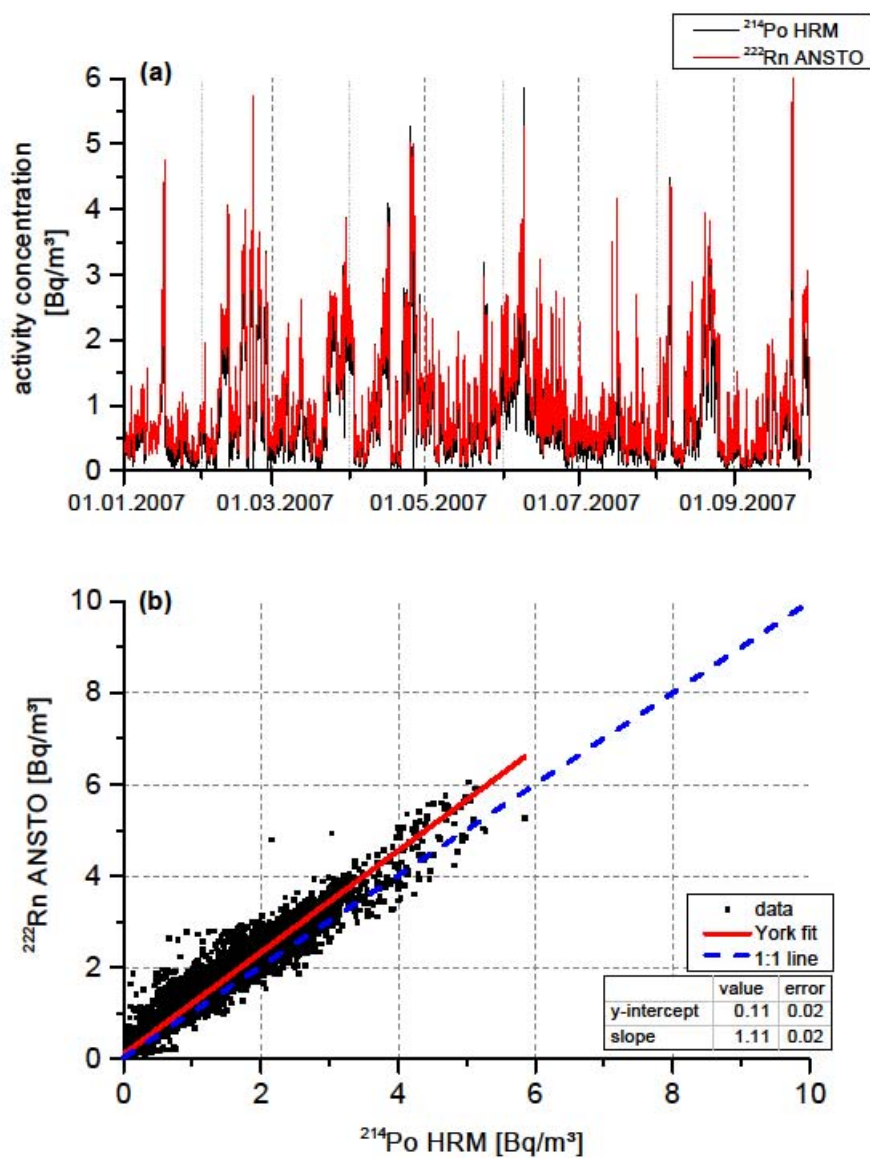


Figure S3: Comparison of Lutjewad ANSTO ²²²Rn with HRM ²¹⁴Po, both at 60m

Heidelberg 2015

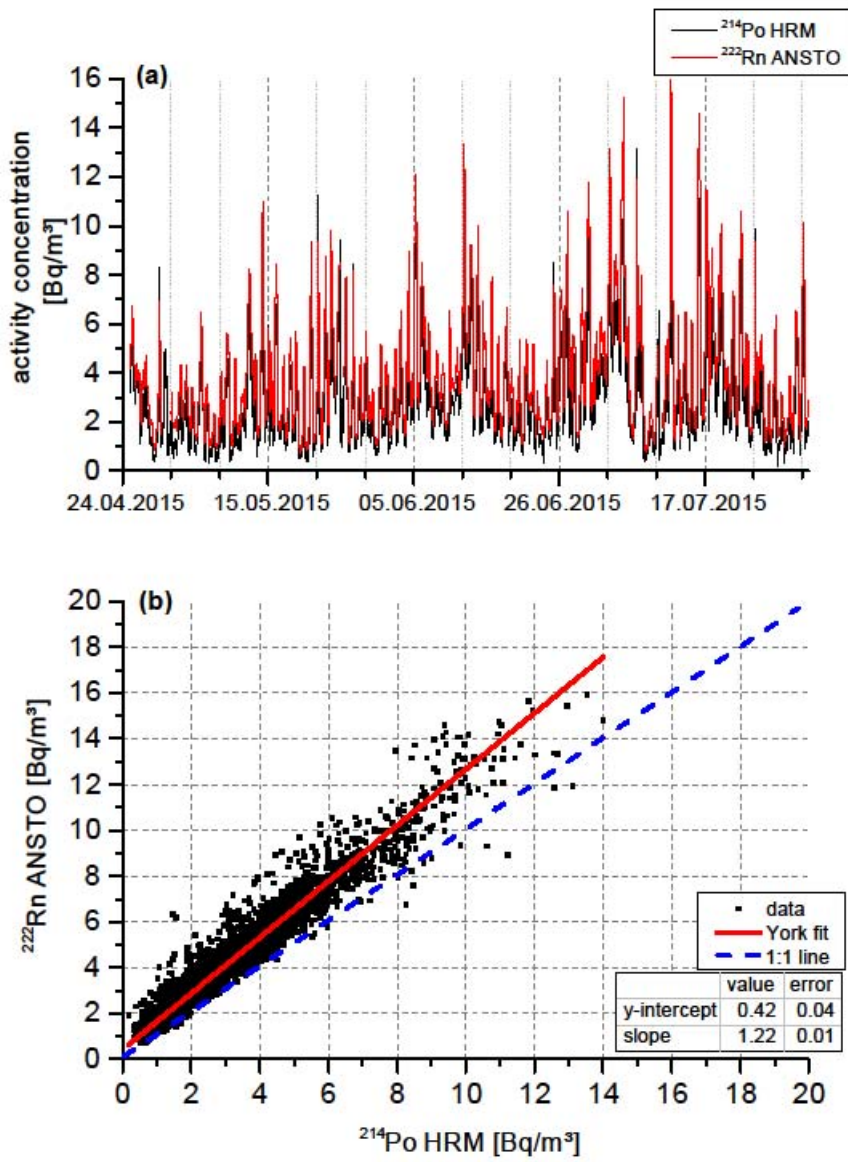


Figure S4: Comparison of Heidelberg ANSTO ²²²Rn with HRM ²¹⁴Po, both at 35m

Pallas 2014

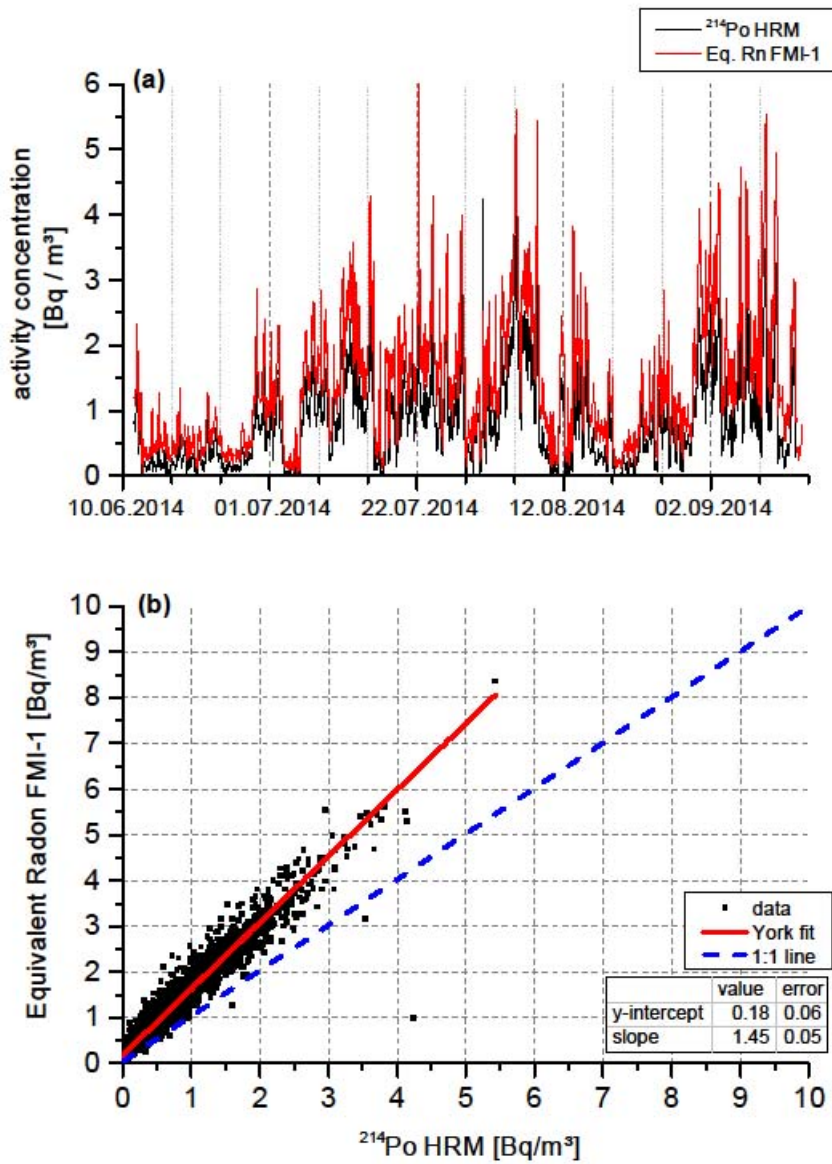


Figure S5: Comparison of Pallas FMI-1 ²¹⁴Pb- and ²¹⁴Bi-based equivalent ²²²Rn with HRM ²¹⁴Po, both at 5m

Helsinki May 2014

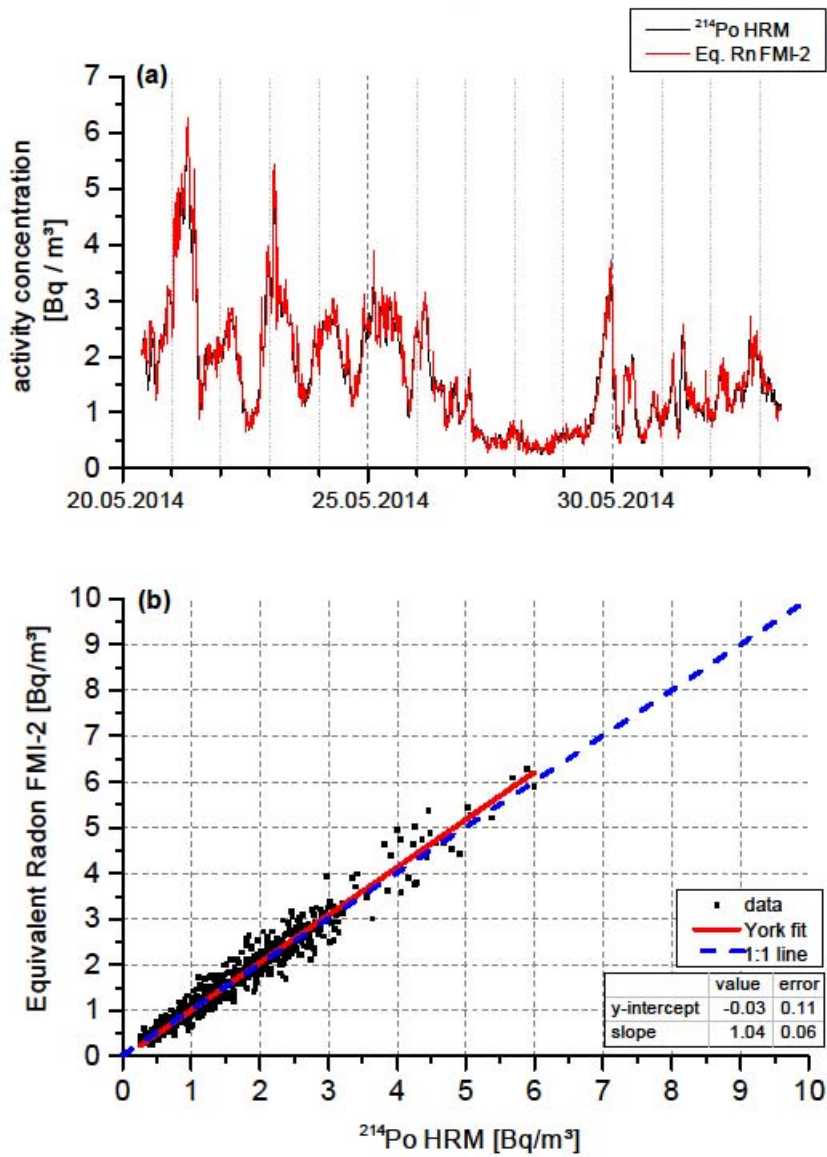


Figure S6: Comparison of Helsinki FMI-2 ²¹⁴Pb- and ²¹⁴Bi-based equivalent ²²²Rn with HRM ²¹⁴Po, both at 27m

Helsinki October 2014

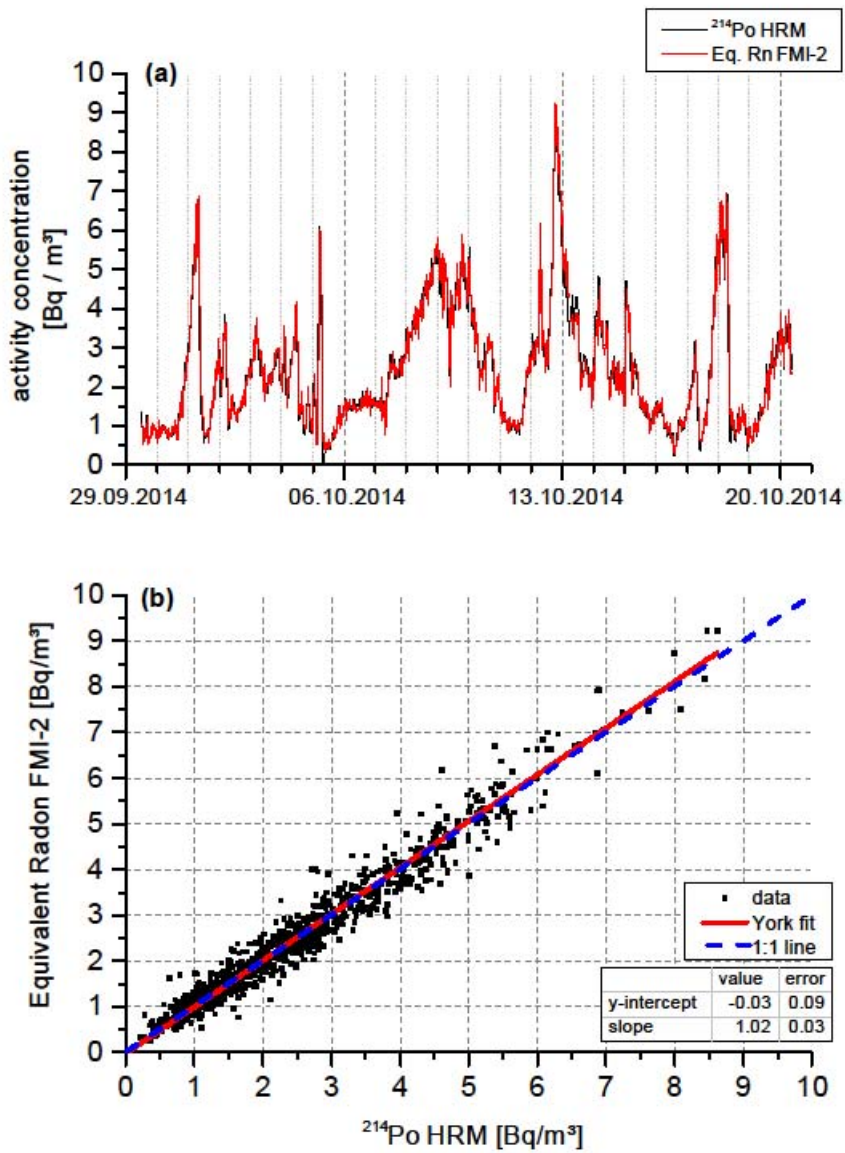


Figure S7: Second comparison of Helsinki FMI-2 ²¹⁴Pb- and ²¹⁴Bi-based equivalent ²²²Rn with HRM ²¹⁴Po, both at 27m

Mace Head 2014

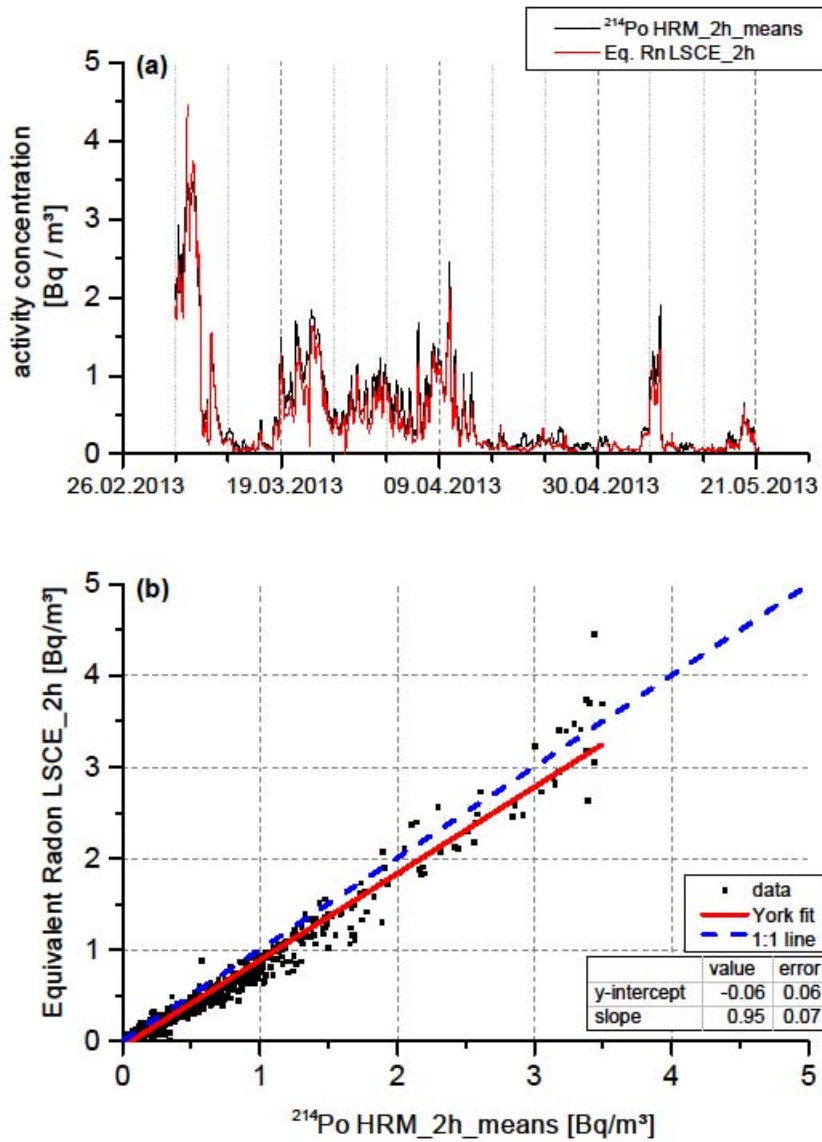


Figure S8: Comparison of Mace Head LSCE ²¹⁸Po- and ²¹⁴Po-based equivalent ²²²Rn with HRM ²¹⁴Po, both at 5m

GIF 2014

(blue data flagged, because of flux problems)

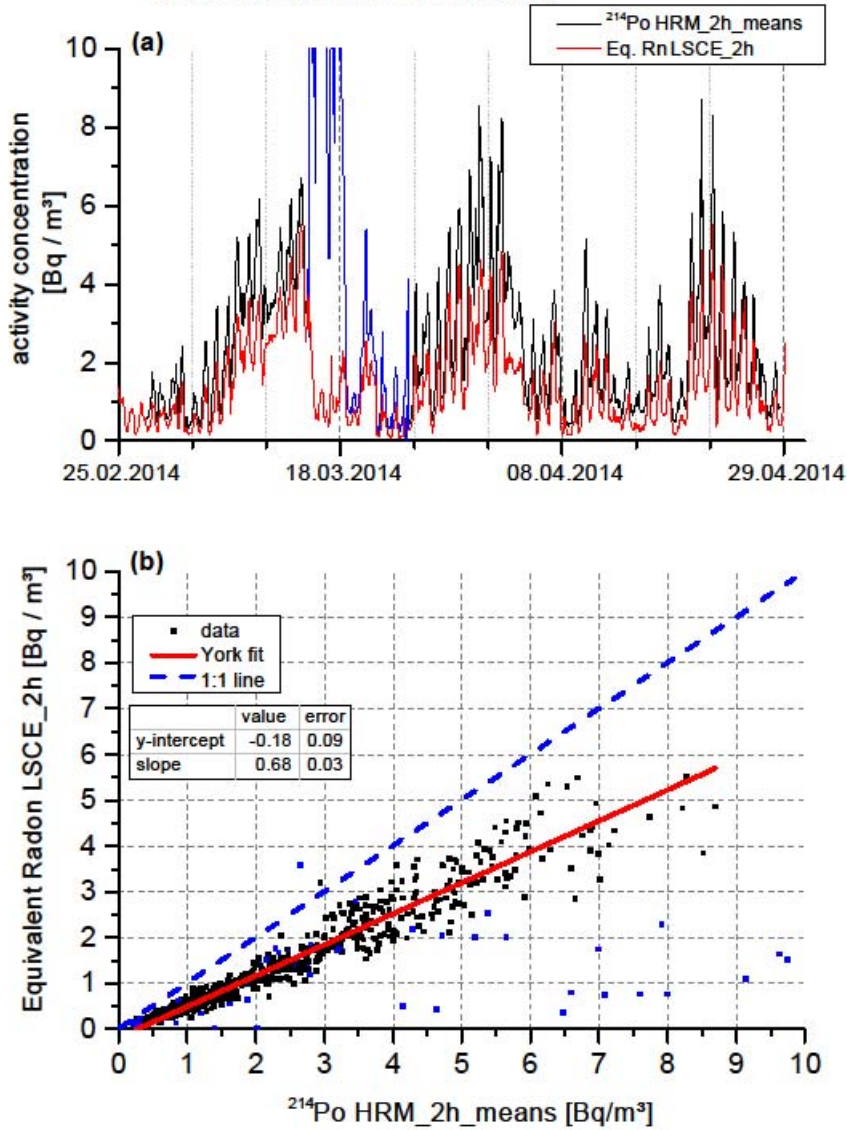


Figure S9: Comparison of Gif-sur-Yvette LSCE ^{218}Po - and ^{214}Po -based equivalent ^{222}Rn with HRM ^{214}Po , both at 2m

BfS 2013, 5_SIL2

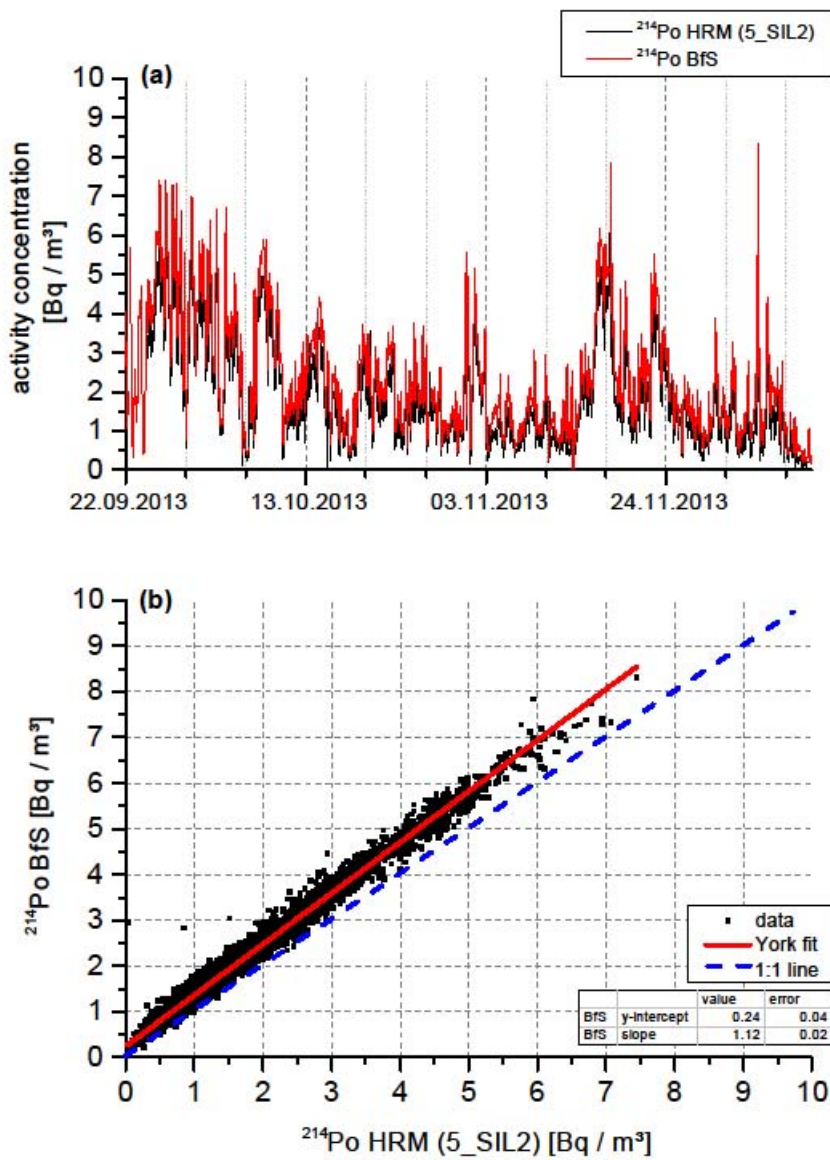


Figure S10: Comparison of Schauinsland BfS ²¹⁴Po with HRM (5_SIL2) ²¹⁴Po, both at 2.5m

BfS 2013, 9_InGOS

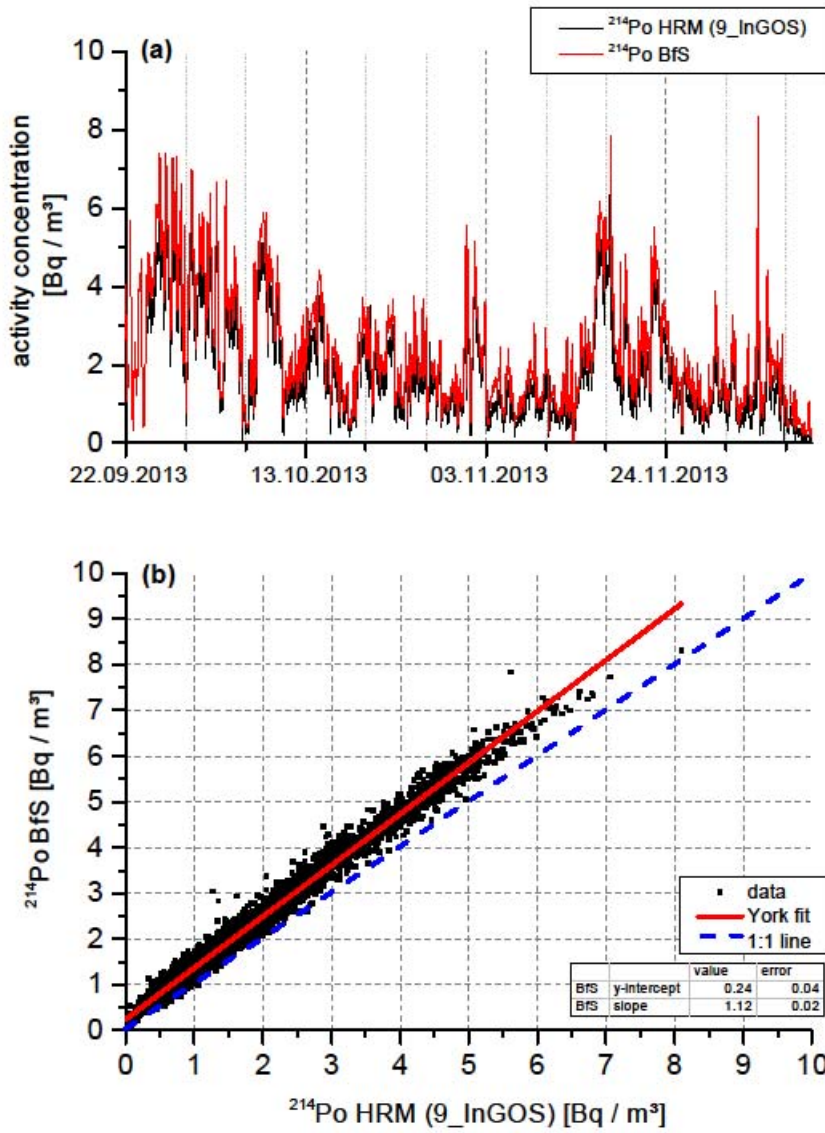


Figure S11: Comparison of Schauinsland BfS ^{214}Po with HRM (9_InGOS) ^{214}Po , both at 2.5m

HPB 2014

(blue data flagged because of frost flowers in the intake line)

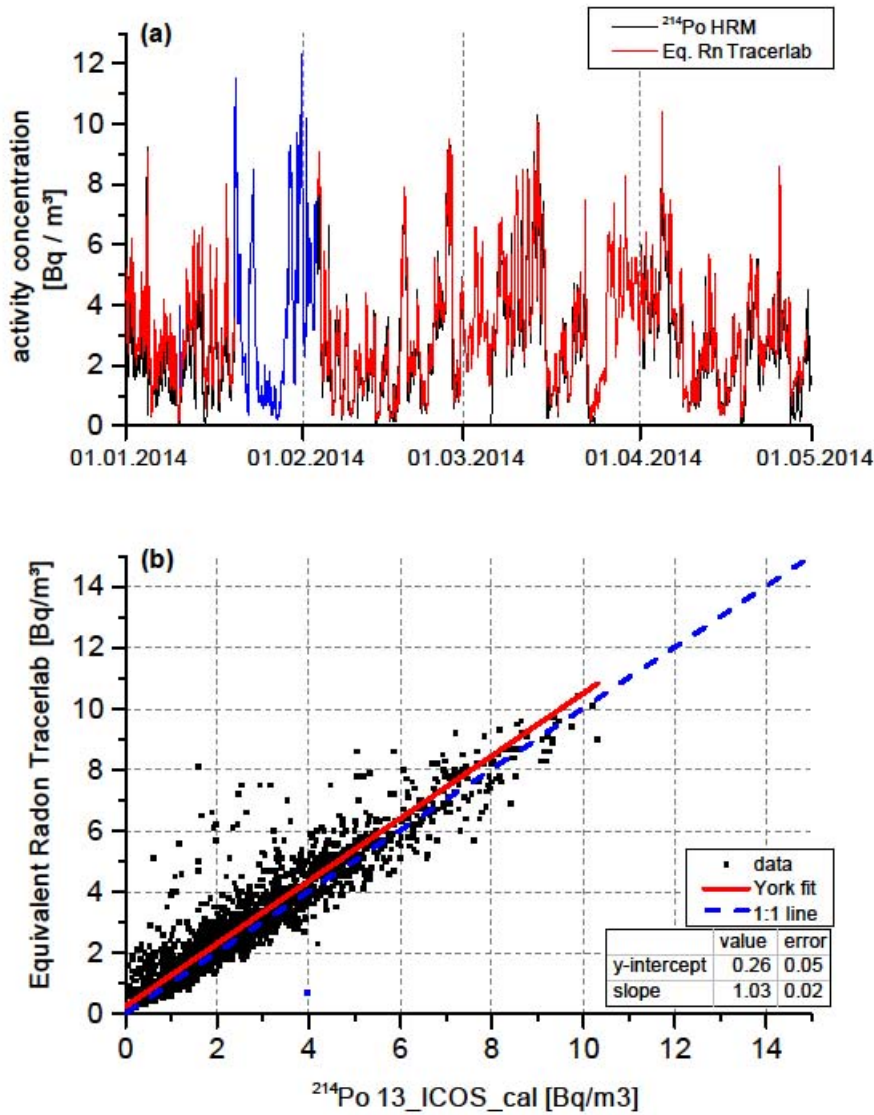


Figure S12: Comparison of Hohenpeißenberg TRACERLAB ²¹⁸Po- and ²¹⁴Po-based equivalent ²²²Rn with HRM ²¹⁴Po, both at 10m