

Interactive comment on “Assessment of the underestimation of snowfall accumulation by tipping bucket gauges used operationally by the Spanish national weather service” by S. T. Buisan et al.

S. T. Buisan et al.

sbuisans@aemet.es

Received and published: 20 July 2016

I discovered that when I changed the page from landscape format to portrait format, the location (red star) of Formigal site moved to the east (Figure 2). The site is really located in the central western Pyrenees. See attached the modified figure.

Sorry for this inconvenience

Interactive comment on Atmos. Meas. Tech. Discuss., doi:10.5194/amt-2016-197, 2016.

Printer-friendly version

Discussion paper



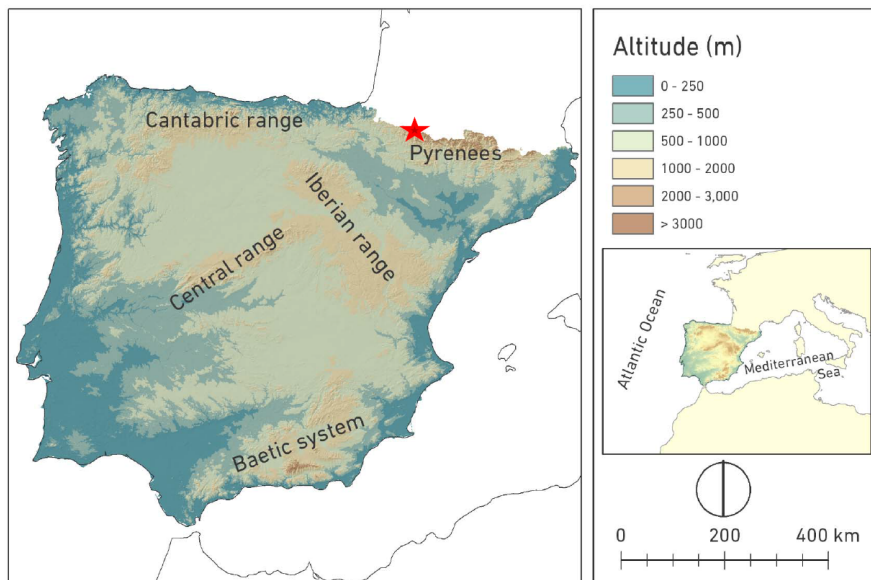


Figure 2. Orography of Spain and location of Formigal-Sarriès site

Fig. 1.