

Manuscript prepared for Atmos. Meas. Tech.
with version 2014/07/29 7.12 Copernicus papers of the L^AT_EX class coperni-
cus.cls.

Date: 16 May 2016

Comparison of OMI NO₂ observations and their seasonal and weekly cycles with ground-based measurements in Helsinki

Iolanda Ialongo¹, Jay Herman², Nick Krotkov², Lok Lamsal^{2,3}, Folkert Boersma^{4,5}, Jari Hovila¹, and Johanna Tamminen¹

¹Earth Observation Unit, Finnish Meteorological Institute, Helsinki, Finland

²Atmospheric Chemistry and Dynamics Laboratory, NASA Goddard Space Flight Center, Greenbelt, Maryland, USA

³GESTAR, Universities Space Research Association, Columbia, Maryland, USA

⁴KNMI - Climate Observations Department, De Bilt, Netherlands

⁵Wageningen University - Meteorology and Air Quality Group, Netherlands

Correspondence to: I. Ialongo (iolanda.ialongo@fmi.fi)

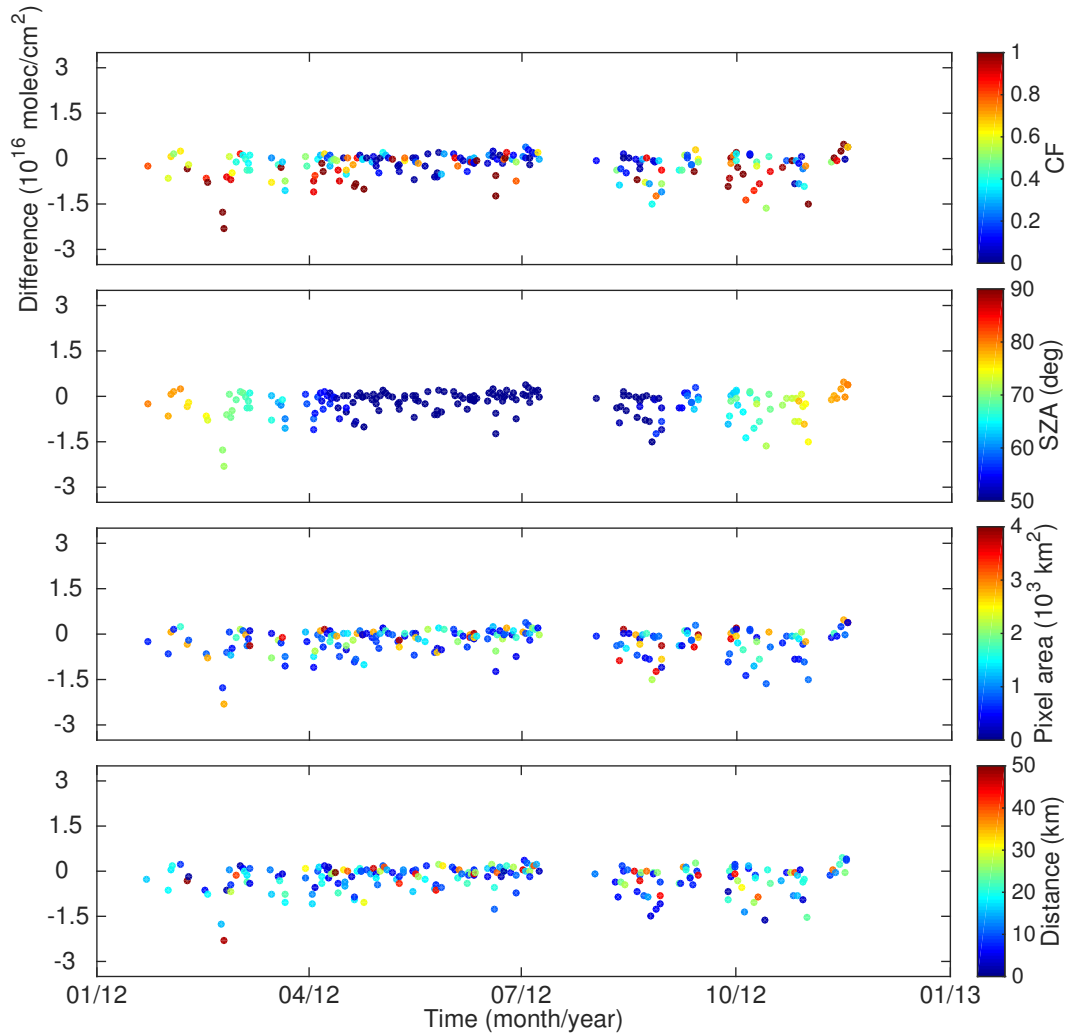


Figure S1. Difference between OMI DOMINO and Pandora NO₂ total column in Helsinki during 2012. The colorscales in the different panels correspond to OMI CF, SZA, pixel area and distance between the actual location of Pandora instrument and the center of OMI pixel.