

In the revision of our paper, we have added more detail per the reviewer's concerns. Most importantly, we made a significant change to the retrieval algorithm in that we no longer have the initial, "tentative" retrieval of cloud optical depth (τ_{cld}) prior to the simultaneous retrieval of τ_{cld} , T_{cldtop} , r_{eff} , T_{sfc} , T_{atm} , H_2O , O_3 and CO_2 . Figures and quantitative comparisons to radiosondes, AIRS-V6 and CloudSat/CALIPSO are updated. Details of this and other specific areas are addressed in the responses below.

General comments:

The authors describe a 1-D variational retrieval of temperature, atmospheric constituent gases, and cloud properties from AIRS observations (AIRS-OE) and co-located operational MODIS cloud property retrievals. Multiple retrieval strategies are employed based on the availability of MODIS cloud properties and their sub-pixel characteristics within an AIRS FOV. The paper fits well within the scope of AMT and provides a sufficient contribution to scientific progress in the field of remote sounding from hyper- spectral IR measurements.

The layout of the paper is logical and the algorithm flow is well described; however, there are significant technical and material deficiencies that need addressed before acceptance to AMT.

For instance, some important details of algorithm settings (e.g., measurement noise) are missing from the text and the authors' description of the retrieval information content/error estimation is sometimes confusing. In addition, the sections on the discussion of results, validation of the AIRS-OE algorithm against matched radiosonde, and comparisons to operational AIRS v6 (and conclusions drawn from the results) are lacking enough detail to fully assess the comparative pros, cons, and skill of the AIRS-OE retrieval relative to existing products.

Specific comments:

"QA" is not defined (pages 13, 14, 15) in the text.

We've changed "QA" to "QC", and spell out this abbreviation in Sec 3.8.

Page 1, Line 20: "higher vertical resolution of retrieved temperature and water vapor" There are other advantages of thermal infrared data – e.g., trace gas sensitivities, sensitivity to aerosol, . . .

We agree, but trace gases were retrieved here only insofar as they improved the temperature, water vapor and cloud retrievals. We didn't get into the advantages of the infrared with respect to trace gases or aerosol because we (mostly) did not retrieve them in this initial effort. We have changed the phrase "The advantage ..." to "An advantage ..."

Page 2, Line 10: . . . the Stand-alone AIRS Radiative Transfer Algorithm, Delta-Four Stream (SARTA-D4S; Ou et al., 2013). There is another extension to the SARTA package

that enables the simulation of outgoing radiance in the presence of cloud and aerosol and that is directly applicable to AIRS studies: DeSouza-Machado, S., Strow, L. L., Imbiriba, B., McCann, K., Hoff, R., Hannon, S., Martins, J., Tanré, D., Deuzé, J., Ducos, F., and Torres, O.: Infrared retrievals of dust using AIRS: comparisons of optical depths and heights derived for a North African dust storm to other collocated EOS A-Train and surface observations, J. Geophys. Res., 115, D15201, doi:10.1029/2009JD012842, 2010.

We didn't reference the DeSouza-Machado et al. (2010) paper since they it was mostly about dust retrieval (something we didn't try in AIRS-OE). However, the referee is correct in that it was a significant extension to the forward modelling in AIRS, and this is noted in the conclusions. We have also made note of the recent DeSouza-Machado et al. paper currently in discussion in AMT.

Page 4, Line 2: How is the radiance noise covariance prescribed? AIRS detector modules have significant correlated noise among channels within each module (e.g., <http://onlinelibrary.wiley.com/doi/10.1256/qj.03.93/pdf>, page 1480 and Tobin, et al., "Hyperspectral data noise characterization using principal component analysis," J. Appl. Remote Sensing, v1, 2006). Does the algorithm account for the correlation in the observation covariance, or does it only use a diagonal matrix? How is the noise estimated or prescribed? Are forward model error components estimated or used in addition to instrument noise? If so, how? Do you use a bias correction between obser- vations minus calculations; if so, how is it estimated?

Only the diagonal error is reported in the AIRS Level 1b data, and we have not estimated off-diagonal elements. This should have been noted, and we thank the reviewer for pointing this out. We have added some comments about this, and a reference to the Tobin et al. paper. We have not put in estimates of the systematic error components for the forward model (this was noted in 3.7.2), but we expanded on this a little and w.r.t. bias corrections, and we note tuning done in SARTA and refer to the validation paper by Strow et al. (2006). We now note that random error from the "clear" part of the forward model is expected to be less than random errors from the observed radiance, but it should be included in future versions.

Page 5, line 35: "use extrapolated cloud absorption and scattering parameters, and may not be reliable." This statement is not clear. I assume that the cloud absorption and scattering parameters are restricted in the Forward Model lookup tables between 5-85 microns, but it is not clear from the text.

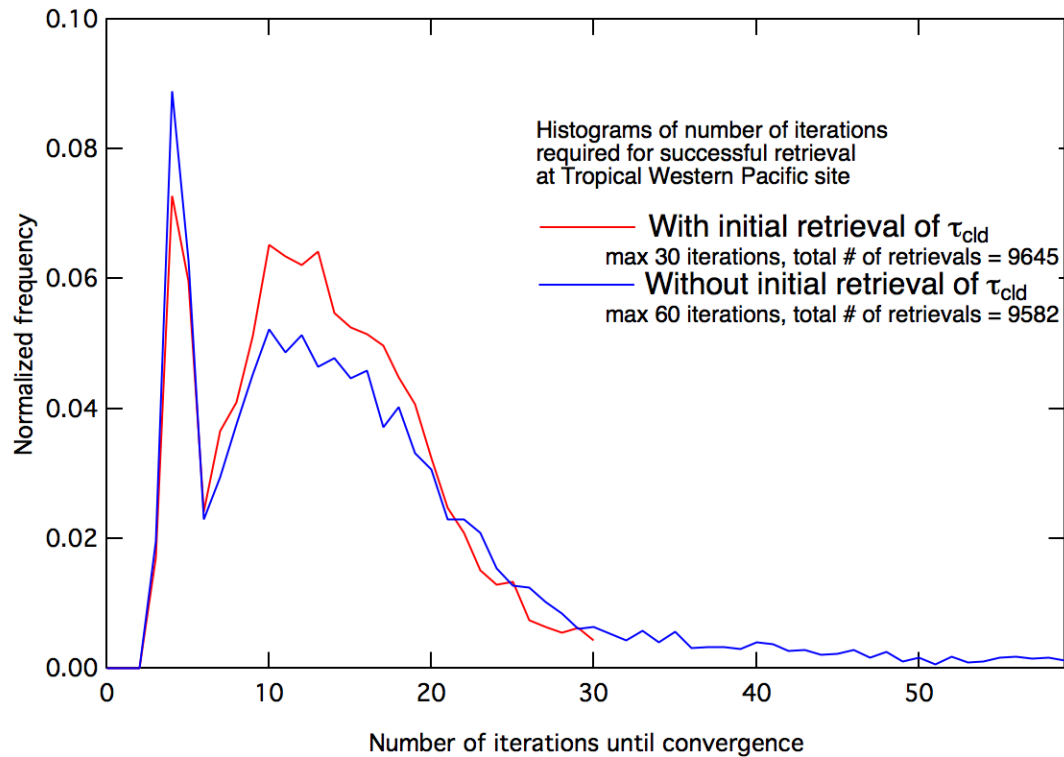
We have changed to line to read, "Lookup tables for cloud absorption and scattering parameters had a particle radii range from 5 to 85 μm ; reported cloud absorbtion and scattering parameters outside this range rely on extrapolated parameters, and results may not be reliable."

Page 8, line 2: "...of uncertainties in the scattering/absorption ratio (Nakajima and King, 1990; Nakajima et al., 1991)" ... perhaps also due to the 4 stream approximation of the forward model employed in this study.

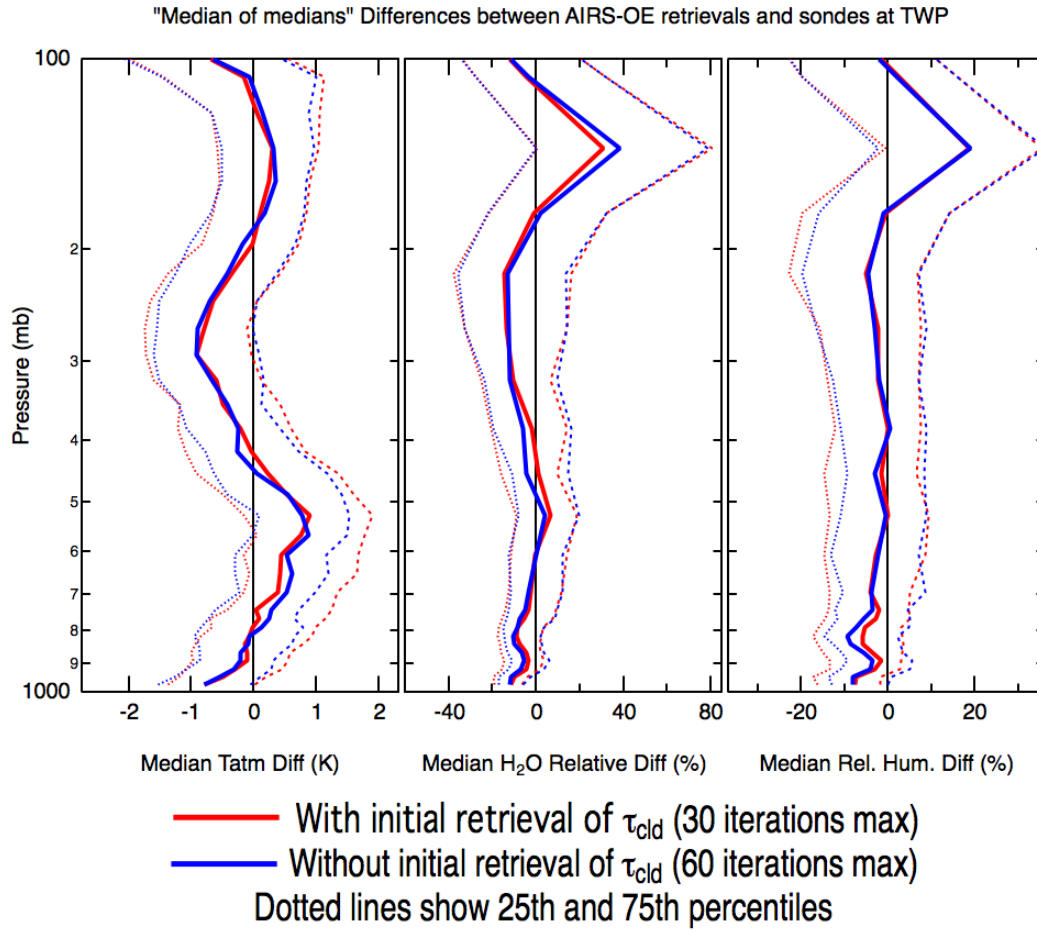
This is possible, but we also encountered difficulties in clear scenes when using the shortwave channels, and so we think it likely that the problems of reflected sunlight contribute substantially to this. Whether this is an issue with just SARTA, or with D4S as well needs investigation. We also did not adjust the noise in the shortwave channels as a function of channel radiance, as illustrated in the Tobin et al. paper. As we used the L1b errors directly (which tend to be less than those of cloud-cleared radiances in the shortwave), we tended to rely more strongly on the accuracy of the forward model in the shortwave (and the fidelity of the reflected sunlight calculation) than would be done in AIRS-V6. Profile biases and failed retrievals when using the shortwave were non-trivial problems that we could not quickly solve, so we decided at this stage of development to avoid the issue altogether and just use longwave channels.

Page 8, Line 13: "...First, leaving other variables fixed, only τ_{cld} is retrieved...The resultant spectral fit from this initial retrieval can be poor." If the spectral fits are poor after this first attempt how is convergence/iteration stopping criteria determined? This particular detail of the algorithm flow seems important and critical to the success or failure of the algorithm to converge to the optimal solution in subsequent steps.

We note that a retrieval can "converge" such that subsequent iterations would not lower the cost function any further; the fit can be poor (as measured by the chiSquare), but better than one calculated directly from the a priori, and that we did not change x_0 in the cost function or the a priori covariance of τ_{cld} from the first step to the simultaneous step – perhaps avoiding the warning in Sec. 5.6.2 of Rodgers [2000]. Nonetheless, we reviewed this aspect of the algorithm, and reprocessed validation data from the TWP, SGP and NSA sites, skipping the initial retrieval of cloud optical depth and going directly to the simultaneous retrieval. We found that to get close to the earlier yields, we had to double the number of allowable iterations. The graph below is a histogram of the number of iterations needed with and without the initial retrieval of cloud optical depth over TWP.



Comparisons against radiosondes (using the “median-of-the-medians” approach) shows effectively no differences at NSA, some differences at SGP, and the largest differences at TWP. The TWP comparisons (below) show small and isolated biases with each other, but we think they are significant enough to call into question whether the initial retrieval of cloud optical depth can lead to an optimal solution.



Given this, and despite the extra processing required, we decided to remove the initial retrieval of cloud optical depth, and reprocess the AIRS data shown in the paper. In reflection of this, we have re-written Sec. 3.6, and modified the block diagram of Figure 2. The retrieval that produced the averaging kernels and row sums in Figures 4 and 5 of the original draft failed under this new processing, so we selected a new retrieval to produce the sample graphics. We thank the reviewer for bringing up this issue and prompting us to study it further.

Page 8, Line 23: "...nearly linear in vicinity of the solution" and a priori? Per the above comment about poor spectral fits after the first attempt, I wonder how well this linear assumption holds for all retrieval strategies employed. The authors should address the potential failure of this assumption and/or reasons why the assumption is valid in greater depth.

The assumption of linearity is perhaps most important in the error characterization. As the a priori covariances are largely ad hoc, we cautioned against the errors being reliable. We thought it best to leave validation of the error characterization, and the linearity assumptions that go with that, to a later study when AIRS-OE is more

refined. We have added a phrase noting that the assumption of linearity has not been tested. In the Summary and Discussion section, we mention adding linearity tests to future versions and point the reader to the section in Rodgers [2000] that expands on this.

Page 9, Line 33: "...on the spectrum" suggest to revise to "measurement spectrum."

Fixed. It now reads "...on the measured spectrum..."

Pages 9-10: How does the vertical resolution of the AIRS-OE algorithm compare to the operational AIRS V6 vertical resolution.

We've have not tested this specifically as it goes beyond the scope of this initial effort. Making an fair comparison between vertical resolution estimates between the two versions has to be performed and documented carefully as the averaging kernels of AIRS-OE and AIRS-V6 (the latter using singular value decomposition) are calculated quite differently.

Page 10, Line 12-13: Continuing the previous comment. "... depend on the amounts of trace gases present, the temperature lapse rate, the particulars of the cloud field" These statements are true for any retrieval strategy (cloud-clearing, cloudy, or clear) from AIRS or any other instrument.

True, but the section walks the reader through a sample averaging kernel for a simultaneous retrieval, and explains how its information can be extracted and used. We thought it helpful to tell the reader less familiar with averaging kernels that they're quite scene-specific.

The authors continue "...since the AIRS-OE retrievals are simultaneous and not sequential. . .," which seems to be a nod to the operational AIRS algorithm. Consider adding a reference (e.g., Maddy, E.S. and C.D. Barnet 2008. Vertical resolution estimates in Version 5 of AIRS operational retrievals. IEEE TGRS. v.46 Section 2A, p. 2377) to back up the first statement and provide contrast the second statement.

Section 3.7.1 now references the Maddy and Barnet paper, but we note that add that the averaging kernels from the AIRS operational retrievals do not work across species.

Page 10, Line 25: How is the noise error covariance defined? See above.

Section 3.3 has been expanded to describe this more fully, and we refer back to that section.

Page 10, Lines 29-30): "...spectral biases or other errors that are correlated across observations" calibration uncertainty, correlated instrument noise (if not included in measurement covariance . . . see previous comments).

The lines relate that we are not calculating systematic error in Eq. 11, and systematic error would be affected by calibration uncertainty. The correlated noise

would more affect random error, and we have noted that it's not there (but eventually will be) in the line below Eq. 10. We added a note that Strow et al. use tuning to fix some of the systematic error coming out of SARTA.

Page 12, Line 23-25: "...The morphology of the AIRS-OE retrieval fields are similar to the a priori, and the morphology of the averaging kernel fields are similar to each other. " This statement is confusing. Please revise for clarity..

We're re-written this to read: "Retrieved quantities have similar fields to their a priori. As indicated by the averaging kernels, sensitivity is enhanced for ice clouds, which is likely because of the higher thermal contrast with the surface."

Page 13, Line 26: "...for each of these..." Consider revising to "for each retrieval quantity"

Done. Thanks.

Page 13, Line 30: "...unphysically high values..." It's unclear whether the authors are referring to unphysically high differences (>100%) or unphysically super-saturated retrievals.

We've changed to read "...unphysically high RH values..."

Section 4.3: Spatial resolution is one of the main differences between AIRS-OE and AIRS V6. Have the authors performed a comparison between quality controlled AIRS-OE averaged onto the AIRS V6 effective footprint (i.e., 3x3 spatial average)? A short discussion of this type of comparison is suggested.

We agree that such a comparison would be interesting, but this is beyond the scope of the current study. Such an analysis would be useful after we ameliorate many of the retrieval's listed shortcomings and move to a more mature code.

Page 13, Line 33: "IGR" should be IQR.

Fixed. Thanks.

Page 14, Lines 11-16: Authors provide a qualitative description of the "a priori" sensitivity of the algorithm. A more detailed quantitative would be informative to the reader.

We're adding in a profile plot of the average row sums of the Tatm and H2O averaging kernels for retrievals using the ECMWF a priori. Plots using the climatology or neural-net a priori were very similar.

Page 14, Line 30: "...lower down..." consider removing.

Removed.

Page 14, Line 33: "...because the water vapor retrieval was too high..." Too high relative to what? Consider revising for clarity. For instance, "because the reported retrieval water vapor was supersaturated."

We've changed the text to read, "We also found that average bias could often be significantly skewed by retrieval outliers – usually because the water vapor retrieval and relative humidity were unphysically high."

Figures 13, 14 and corresponding text: The AIRS-OE a priori statistics (bias and IQR) are generally more well behaved as compared to both the AIRS v6 and AIRS-OE retrievals and in some cases perform better than both physical retrieval algorithms (esp. near surface for temperature). I wonder how much do the cloud/other variable retrievals compensate for other variable/cloud errors. A more detailed analysis and/or discussion of an assessment of AIRS-OE retrieval increments of profile variables as well as surface temperature, and cloud optical properties relative to a priori as compared to Radiosonde and correlative CloudSat/Calipso retrievals should elucidate cross-talk between retrieval parameters is suggested.

We agree that more detailed analyses would be useful, but with the resources given this effort, we could only make limited comparisons against sondes and comparisons to AIRS-V6. As noted in the Summary and Discussion section, there are several non-trivial issues that we have identified against the algorithm that should be fixed for the upcoming versions. A more comprehensive validation and analysis would be warranted as the algorithm matures.

Page 15, line 30: "are low" – how low?

We've changed the line to read: "At NSA between about ~800 and ~220 mb, AIRS-OE temperature biases are low (less than ± 0.25 K) at altitudes above ~800 mb, as are water vapor relative biases (less than $\pm 6\%$)"

Page 16, line 9: "...has an information content analysis... operates both within and across different atmospheric parameters." It is unclear what is meant by "operates both within and across." Do you mean that the information content analysis provides diagnostic information regarding the temperature retrieval, water retrieval, etc. and interactions between temperature and water, temperature and cloud, water and cloud, etc. If so, please revise.

We changed the sentence to add examples: "As AIRS-OE rests on an optimal estimation framework, and includes simultaneous retrieval of profiles and scalar variables, it has an information content analysis that operates both within an atmospheric parameter (e.g., uncertainties in the temperature profile) and across different atmospheric parameters (e.g., uncertainties in water vapor due to uncertainties in temperature)."

Page 16, line 16-17: "... incorporating scattering by dust..." Is the radiative effect of an atmospheric dust signal in AIRS measurements large enough to cause significant degradation in a 1DVAR retrieval? Consider adding a sentence and or reference detailing why this is might be important (e.g., Maddy, E., DeSouza-Machado, S., Nalli, N., Barnet, C., Strow, L., Wolf, W., Xie, H., Gambacorta, A., King, T., Joseph, E., Morris, V., Hannon, S., and Chou, P.: On the effect of dust aerosols on AIRS and IASI operational level 2 products, GRL, 39, L10809, doi:10.1029/2012GL052070, 2012. 446)

Done. Thanks.

Page 16, line 17-18: Again, does the 4-stream RT algorithm limit the use of AIRS shortwave channels? Are there any other specific limitations with forward modeling that need to be addressed before the 4micron band could be utilized? Scattering tables, spectroscopy, etc.?

As noted above, these are non-trivial issues with SARTA (or most any other thermal-IR forward model). At this stage, we hesitate to speculate on exactly what changes are needed in SARTA, or SARTA-D4S to fix issues in the shortwave, although we note modifying the radiance error may help in the retrieval.

Page 16, line 32: "...compare well with operational AIRS-V6. ." how well? how is it distinguished from AIRS v6? There are a number of characteristics (potential advantages and distinguishing features) of the AIRS-OE algorithm as compared to the AIRS v6 algorithm (higher spatial and vertical resolution, potentially better cloud characterization, comparable statistical results, etc.); however, these are scattered within the text and conclusions. It would be helpful to re-organize the conclusions such that these characteristics are emphasized.

We list what we think are the most useful and distinguishing features of AIRS-OE compared to AIRS-V6 in the first paragraph of Section 6, although we have cut the line about robust sensitivity as that needs more validation in more regions. Within this first effort, however, the quantitative comparisons of AIRS-OE and AIRS-V6 against radiosondes indicate that a qualitative phrase like "compares well" is reasonable. We thought we'd end the paper where the initial motivation for this effort began – a better horizontal resolution for temperature and water vapor, which when combined with cloud data, we expect to be useful in many kinds of targeted studies.

Additionally, we found a programming error that led to an undercount of successful AIRS-OE retrievals matched to sondes. This programming error has been corrected.

We thank the reviewer for perceptive comments and good questions.

In response to some concerns of the first reviewer, this revision of our paper has a significant change to the retrieval algorithm in that we removed the initial, “tentative” retrieval of cloud optical depth (τ_{cld}) prior to the simultaneous retrieval of τ_{cld} , T_{cldtop} , r_{eff} , T_{sfc} , T_{atm} , H_2O , O_3 and CO_2 . Changes to results were comparatively minor, but we thought significant enough to modify our algorithm. Conclusions are for the most part unchanged. Figures have been updated, as well as quantitative comparisons to radiosondes, AIRS-V6 and CloudSat/CALIPSO. Please see our response to the first reviewer for more details.

Overall assessment. This manuscript tackles one of the most fundamental issues in the field of hyperspectral IR remote sensing, that is the problem of clouds in an inversion scheme. The text is very well written and provides a way forward to the advancement of the inversion problem. All assumptions in the treatment of the cloud a priori are well explained. This lays out the foundation for a constructive conversation on the future directions that IR retrieval developers may want to consider when it comes to address the presence of clouds in an inversion methodology. I suggest this manuscript to be published, pending minor corrections as outlined below.

Minor comments: 1. The authors should add that, besides not needing absorption and scattering in the forward model, another advantage of cloud clearing is that it also does not require a formal cloud geophysical a priori and its error co-variance; it is computationally fast; it enables full column retrievals. A limitation, besides assuming constant water vapor in the cluster of FOVs, comes from also assuming uniform surface properties over the cluster of FOVs, which can be challenging over coastal regions.

We agree that there are significant differences in the benefits/drawbacks of single-footprint vs. cloud-cleared spectra, which for brevity we did not go into. Instead, we discuss what we thought the most important difference, namely the horizontal resolution, which shows up most significantly in the water vapor and relative humidity.

2. Could the authors explain in few sentences how their work differs from the cited existing methods employed for direct use of cloudy infrared spectra in atmospheric retrievals (Liu, 2009, Blackwell 2005 and Kulawik, 2006a).

We hesitate to do this as differences between AIRS-OE and the Liu, Blackwell and Kulawik methods would be fairly lengthy even if described cogently, and our paper is already quite long. We thought readers would be better served by going to those papers directly, and more important (and perhaps more interesting from the reader’s perspective) to contrast AIRS-OE with the AIRS operational retrieval, AIRS-V6.

3. Can the authors say anything about using a monthly averaged surface emissivity, is this a robust approximation for a given day of the month? Also, have they evaluated the inter-annual variability in the data set to derive a rough assessment of how good of an approximation is to apply the 2003 climatology to the year before? Have they

attempted a comparison with the existing surface emissivity regression solution of AIRS v6?

In Sec. 3.2.3, we note that the emissivity is not retrieved in this version of AIRS-OE, but we noted an emissivity retrieval may happen in future versions. We have added a note about this in comparing AIRS-OE to AIRS-V6 in the introduction. In Sec. 3.7.2, we also note that using a fixed emissivity is an error source that we have not yet quantified. The use of a fixed emissivity can be an admitted deficiency of the algorithm in its current state. At this stage of AIRS-OE development, it may be premature to make a robust evaluation of the emissivity as its calculation may change in future versions.

If not, can they say few words about their motivation to replace the AIRS v6 method? Also, for completeness, they should include this as part of the list of differences with respect to AIRS v6 on page 2 -3

This effort was a proof-of-concept not meant to “replace” AIRS-V6, but rather to provide a means where studies, in particular those of water vapor, can be done on the native resolution of the AIRS infrared observations. In the introductory comparison with AIRS-V6, we’ve noted that AIRS-OE does not retrieve emissivity, although that might change.

4. Do the MODIS cloud parameters come with a formally computed error covariance? Otherwise, what is the source for this?

The MODIS Level 2 files used have quality flags, but do not have an error covariance provided; we do not use the MODIS data directly in the retrieval, but rather a weighted average of them. We have used ad hoc error covariances in the retrieval, as described in Table 1.

5. Was there a specific geophysical regime where the use of the 9.6 micron band was problematic, for example the tropical region, or desert areas? The broader scientific community would benefit from a more detailed explanation of what the sentence “We therefore retrieve O3 only as an “interferent” gas within the 14 μm CO2 region, and avoid the 9.6 μm band” means. Did the authors only use channels in the CO2 band for the retrieval of ozone? If not, can they explain more?

In Sec. 3.5, we have expanded our explanation of why we didn’t use the 9.6 micron band, note that we are not currently retrieving ozone as a “primary” product, and caution against using our O3 retrievals for scientific investigation. In the conclusions section, we briefly discuss extended the retrieval to retrieve ozone using the 9.6 micron band.

6. Section 3.6 Is the approximation of leaving all other variables fixed taken into account in the retrieval equation, for example, similarly to what is done in AIRS v6? Also, in the list of differences from the AIRS v6 approach, the authors stated that this is a simultaneous retrieval approach. Can they more fairly say that this is a two-step sequential approach?

We note in Sec. 3.7.2 the error from parameters not retrieved, and how future versions will incorporate an estimate from these. As noted earlier, and for reasons we have written in the response to the first reviewer, we have revised our procedures to go directly into the simultaneous retrieval.

7. Also about section 3.6, if in within the page limits, can the authors say few words on the convergence criteria, besides mentioning the reference to Bowman et al, 2006? Are those the same as outlined later in the text? If yes, for clarity, the authors should refer the reader to that section.

We've put some numbers on convergence and exit criteria in the solver, but in the interests of brevity, we refer the reader to the Bowman and Moré papers.

8. What enters in the measurement noise covariance term, only instrument noise? Can the authors specify this?

Currently only the diagonal of the instrument noise is in the measurement error covariance term. We discuss expanding this term in future version to include correlated noise and random error from the forward model.

9. As an alternative method to the median of the medians, the authors should try the methodology described in Nalli et al., "Validation of satellite sounder environmental data records: Application to the Cross-track Infrared Microwave Sounding Suite", JGR, 2013, where each layer statistic is weighted by the mean water vapor quantity in the layer. This method was also used in Tobin et al., 2005, JGR and seems to be a well established methodology in the satellite retrieval field.

At this stage of AIRS-OE development (and validation), the difficulty was not so much from statistics skewing for H₂O in dry regions, as discussed by Nalli et al. in their Sec 3.1.2. Given that our retrievals were quite different than those on cloud-cleared radiances, the problem was how to combine retrieval statistics when there are widely differing results because of cloud cover, and still make a fair a comparison to AIRS-V6. An important consideration was how to avoid skewing the statistics so that (near-)clear scenes are would not be overrepresented. The "median of the medians" approach was developed to succinctly indicate how well the AIRS-OE retrieval was doing without getting too granular, and see how it compares to the current AIRS-V6 retrieval. As the retrieval matures, and more data are analyzed, we'll reconsider our validation using something more akin to Nalli et al.

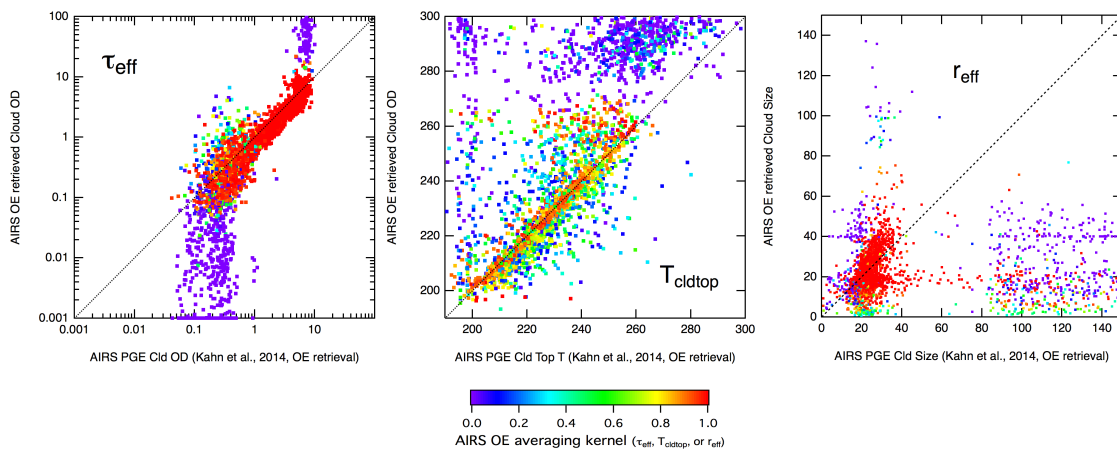
10. Summary and discussion section. How are the authors planning to extend this retrieval method to multi-layer cloud retrievals. Does the MODIS retrieval output contain multi-layer clouds that can be used as a priori?

The MODIS data can tell us if there are clouds at different cloud-top temperatures in the scene, but their vertical extents, particularly at night, are non-trivial issues we would need to work on. We briefly mention using weather prediction for this in the conclusion, as did DeSouza-Machado et al. (2017).

11. Could the authors also consider comparing their cloud retrieval products to the AIRS v6 cloud retrieved products?

We have looked at comparisons between the Kahn et al. (2014) optical estimation retrieval of cirrus (Kahn2014), which uses the AIRS-V6 cloud-top temperature as a priori, against the AIRS-OE retrieval. (Note that the Kahn2014 retrieval does not include liquid water clouds.) We include a comparison figure below. We did not include it for brevity's sake as we felt that validation of the temperature and water vapor (and relative humidity) was more needed, as their increased horizontal resolution was what was new about this work (at least compared to AIRS-V6). We also feel that a detailed cloud comparison needs to go well beyond a simple comparison such as we show below, thus we did not include in the manuscript. We did include the comparison with CloudSat/CALIPSO as an initial check against a completely different instrument suite, however.

Comparisons for Granule 44, Sept 6, 2002 are shown below, colored by the AIRS-OE averaging kernels (AKs) for each parameter. Results for τ_{eff} are well correlated for AKs close to unity, but the AIRS-OE results are biased low ($\sim 25\%$) compared to Kahn2014. Cloud-top temperature shows mostly good agreement for higher AKs. There is more disagreement for effective radius, r_{eff} , but we note that the areas where they differ greatly (Kahn2014 $r_{\text{eff}} > \sim 60$ microns in the lower right), almost all the matchups have Kahn2014 quality flags of 2 ("Do Not Use"). The r_{eff} retrieval is sensitive to the "tilt" of the spectrum, so some of the r_{eff} difference may be related to the spectral range of channels used; the upper range of the Kahn2014 channels is $\sim 1200 \text{ cm}^{-1}$, while AIRS-OE goes to $\sim 1600 \text{ cm}^{-1}$. This will require more investigation, and we will continue to compare results as the AIRS-OE retrieval evolves, and we process more data.



Technical comments: 1. The broader science community might not be familiar with what "L1b" data are. The author should either keep using the "Level 1" definition for radiance data or explain what the "b" stands for.

We've added some language clarifying this in the first paragraph of the introduction.

Additionally, we found a programming error that led to an undercount of successful AIRS-OE retrievals matched to sondes (Figures 14 and 15 in the revised draft). This error has been corrected.

We thank the reviewer for perceptive comments and good questions.

Single-footprint retrievals of temperature, water vapor and cloud properties from AIRS

Fredrick W. Irion¹, Brian H. Kahn¹, Mathias M. Schreier¹, Eric J. Fetzer¹, Evan Fishbein¹, Dejian Fu¹, Peter Kalmus¹, R. Chris Wilson², Sun Wong¹, and Qing Yue¹

¹Jet Propulsion Laboratory, California Institute of Technology, Pasadena, CA 91106, USA.
²Joint Institute for Regional Earth System Science and Engineering, University of California, Los Angeles, CA 90095, USA.

Correspondence to: Fredrick W. Irion (bill.irion@jpl.nasa.gov)

Abstract. Single-footprint Atmospheric Infrared Sounder spectra are used in an optimal estimation-based algorithm (AIRS-OE) for simultaneous retrieval of atmospheric temperature, water vapor, surface temperature, cloud-top temperature, effective cloud optical depth and effective cloud particle radius. In a departure from currently operational AIRS retrievals (AIRS-V6), cloud scattering and absorption are in the radiative transfer forward model, and AIRS single-footprint thermal infrared data are used directly rather than cloud-cleared spectra (which are calculated using 9 adjacent AIRS infrared footprints). Coincident MODIS cloud data are used for cloud a priori. Using single-footprint spectra improves the horizontal resolution of the AIRS retrieval from ~45 km to ~13.5 km at nadir, but as microwave data are not used, retrieval is not made at altitudes below thick clouds. An outline of the AIRS-OE retrieval procedure and information content analysis is presented. Initial comparisons of AIRS-OE to AIRS-V6 results show increased horizontal detail in the water vapor and relative humidity fields in the free troposphere above clouds. Initial comparisons of temperature, water vapor and relative humidity profiles against coincident radiosondes show good agreement. Future improvements to the retrieval algorithm, and to the forward model in particular, are discussed.

1 Introduction

An advantage of hyperspectral nadir measurement in the thermal infrared over the microwave is higher vertical resolution of retrieved temperature and water vapor. Operational instruments such as the Atmospheric Infrared Sounder on the EOS Aqua platform (AIRS; Aumann et al., 2003), the Infrared Atmospheric Sounding Instruments on Metop-A and -B (IASI; Blumstein et al., 2004), and the Cross-track Infrared Sounder on Suomi NPP (CrIS; Han et al., 2013) provide global radiance data for assimilation into weather forecasting and reanalysis models, and profile retrievals for process studies. Perhaps the largest complication for global retrievals (and assimilation) using infrared spectra is near-ubiquitous, highly variable cloud absorption and scattering in the instrument field-of-view (FOV). This is illustrated in Figure 1, which shows sample brightness temperature spectra observed by AIRS in nine adjacent footprints from Level 1b data (that is, radiance data calculated from the raw counts on the AIRS detectors). Most of the variation between the spectra is from differences in cloud-top temperature and cloud optical depth, and to a lesser extent, cloud particle radius as seen on the AIRS footprint. Two general approaches have been used in obtaining profile retrievals from cloudy infrared spectra. The first has been “cloud-clearing,” where the temperature and trace gas fields (including water vapor) are treated as constant across adjacent thermal infrared footprints, and only the cloud field varies. A Level 2 cloud-free infrared spectrum is calculated from these cloudy Level 1b spectra, and then used for profile retrievals over a larger field-of-regard (FOR) (e.g., Susskind et al., 2011.) Cloud-clearing simplifies (and speeds) calculations as the forward model does not incorporate scattering or absorption by clouds. However, by combining retrieval footprints and assuming constant non-cloud quantities, cloud-clearing can mask significant horizontal gradients, particularly in water vapor, which can have a much shorter horizontal length scale than temperature especially in low- and midlatitudes (e.g., Kahn and Teixeira, 2009).

Bill Irion 11/3/2017 12:00 PM
Deleted: Level 1b

Bill Irion 11/3/2017 12:00 PM
Deleted: Level 2

Bill Irion 11/3/2017 12:00 PM
Deleted: Level 2

Bill Irion 11/3/2017 12:00 PM
Deleted: Level 1b

Bill Irion 11/9/2017 4:23 PM
Deleted: C

Bill Irion 10/30/2017 3:24 PM
Deleted: The

The other approach that accounts for clouds is to include cloud absorption and scattering in a retrieval forward model. Advances in efficient cloud scattering algorithms and ever-increasing computing power hold the promise of incorporating explicit cloud effects in forward models for routine, operational retrievals. Several methods and software packages have been developed for the calculation of outgoing radiance in the presence of clouds: Optimal Spectral Sampling (OSS; Moncet et al., 2015), The Havermann-Taylor Fast Radiative Transfer Code (HT-FRTC; Havermann 2006), The Principal Component-based Radiative Transfer Model (PCRTM; Liu, 2005), Discrete Ordinate Algorithm for Radiative Transfer (DISORT; Laszlo et al., 2016), Vector Linearized Discrete Ordinate Radiative Transfer (VLIDORT; Spurr, 2006), the Community Radiative Transfer Model (CRTM; Han et al., 2006), the Radiative Transfer for the Television Infrared Observation Satellite (TIROS) Operational Vertical Sounder algorithm (RTTOV; Saunders et al., 2013), [the Standalone AIRS Radiative Transfer Algorithm \(SARTA\) coupled to the Parameterization of Clouds for Long-Wave Scattering in Atmospheric Models \(PCLSAM\) \(SARTA Two-Slab; DeSouza-Machado et al., 2017\)](#) and, as used in this work, [SARTA + Delta-Four Stream \(SARTA-D4S; Ou et al., 2013\)](#).

While incorporating cloud effects usually makes for a more complicated and computationally expensive radiative transfer calculation, the horizontal resolution of retrieved species can be improved compared to cloud-cleared results. Several methods have been employed for direct use of cloudy infrared spectra in atmospheric retrievals. Among them are combining channel radiances into “super-channels” using empirical orthogonal functions (Liu et al., 2009), neural networks (Blackwell, 2005), and parameterization of frequency-dependent non-scattering optical depths (Kulawik et al., 2006a). [Recently, DeSouza-Machado et al. \(2017\) presented an optimal estimation scheme using their SARTA Two-Slab forward model.](#) Here we describe a new retrieval scheme, Optimal Estimation Retrieval System for AIRS (“AIRS-OE”) that can use the Level 1b radiances of single AIRS footprints, without cloud-clearing, for the retrieval of temperature profiles (T_{atm}), H_2O volume mixing ratio profiles, skin temperatures (T_{sf}), effective cloud optical depths over an AIRS field-of-view (τ_{eff}), cloud-top temperatures (T_{cltop}) and effective particle radii (r_{eff}). CO_2 and O_3 profiles, while not the primary constituents examined or validated here, are also retrieved to improve spectral fitting and temperature results. The goal is to improve the horizontal resolution of retrievals by using the less-processed Level 1b AIRS infrared radiance (at ~ 13.5 km nadir horizontal resolution), rather than the ~ 45 km resolution Level 2 cloud-cleared radiance produced by the currently-operational Version 6 (“AIRS-V6”) retrieval algorithm (Susskind et al., 2003; 2014.) Additional differences of AIRS-OE from the current AIRS-V6 retrieval include:

- (1) Cloud optical depth, effective particle radius, and cloud-top temperature are now explicitly in the forward model, and are retrieved along with temperature and water vapor profiles. A priori cloud information for cloud retrieval is calculated from the MYD06 dataset of the Moderate Resolution Imaging Spectroradiometer (MODIS) instrument, co-located on the EOS-Aqua platform (Platnick et al., 2003, 2017).
- (2) For a priori temperature profiles, skin temperature and water vapor profiles, we use European Center for Medium-Range Weather Forecasting (ECMWF) 6-hour analyses linearly interpolated by time and space to the AIRS observation, where the AIRS-V6 retrieval uses a neural network trained on AIRS radiances and ECMWF re-analyses (Blackwell, 2005). [Emissivity is retrieved in AIRS-V6. For AIRS-OE, emissivity is currently taken from monthly tables \(over land\) and formulae \(over ocean\) and not retrieved \(see Sec. 3.2.3\), although emissivity retrieval may occur in future versions.](#)

Bill Irion 11/9/2017 4:33 PM

Deleted: the Stand-alone AIRS Radiative Transfer Algorithm

Bill Irion 11/29/2017 3:54 PM

Deleted: scattering

Bill Irion 11/28/2017 10:24 AM

Formatted: Font color: Auto

(3) In a departure from the singular-value-decomposition technique of AIRS-V6, which does not use an a priori covariance, the new retrieval uses an optimal estimation scheme (e.g., Rodgers, 2000), similar to that of the nadir-sounding Tropospheric Emission Sounder (TES; Bowman et al., 2006).

(4) Retrievals of atmospheric constituents are made simultaneously, rather than sequentially as in AIRS-V6.

(5) AIRS-OE uses only the thermal infrared data from AIRS, and does not use ~45 km nadir resolution microwave data from the co-located Advanced Microwave Sounding Unit (AMSU). Profiles cannot be retrieved below IR-opaque clouds effectively covering a pixel. However, unlike AIRS-V6, temperature, water vapor etc. are not assumed to be uniform across the nine AIRS footprints in an AMSU field-of-regard (FOR).

In this paper, we give a very brief overview of the AIRS and MODIS instruments, and outline the retrieval and the information content analysis. Some sample cloud property results are presented, and we show an initial comparison with near-coincident measurements by Cloudsat/CALIPSO. We then compare temperature, water vapor and relative humidity results to those of the operational AIRS-V6 retrieval, and with sets of near-coincident high quality radiosondes.

2 Instrument and Spectral Data

The Atmospheric Infrared Sounder (AIRS) instrument is a thermal infrared grating spectrometer, with 2378 channels between 3.7 and 15.4 μm . In sun-synchronous, polar orbit on the EOS Aqua satellite, AIRS delivers approximately 2.9 million spectral observations every 24 hours. AIRS was designed for co-located measurements with the Advanced Microwave Sounding Unit (AMSU) microwave instrument, with nine AIRS observations (each with nadir horizontal resolution of ~13.5 km) in a 3 x 3 grid over a single AMSU observation with a nadir horizontal resolution of ~45 km (Aumann et al., 2003). AIRS was designed to provide global data on weather and climate processes, and is a key antecedent to the IASI and CrIS spectrometers.

As noted, operational Level 2 data from the Moderate Resolution Imaging Spectroradiometer (MODIS) are used as a priori for cloud-top temperature, and during daytime observation, cloud optical depth and particle radius. Co-located with AIRS on EOS-Aqua, MODIS observes in 36 spectral bands from 0.4 to 14.4 μm with horizontal resolutions (depending on band) ranging from 250 m to 1 km at nadir. Details about the MODIS cloud optical properties in the MYD06 data set are found in Platnick et al. (2017). Prior to use, the MODIS cloud data are mapped and weighted over the AIRS footprint as described below in Sec. 3.2.2.

3 AIRS-OE Retrieval overview

Figure 2 shows a simplified block diagram of the AIRS-OE retrieval procedure. For convenience to the reader, blocks are annotated with the Section numbers of this paper where a more detailed description can be found. Input parameters are described below in Sect. 3.1 through 3.5. A brief description of the retrieval itself is in Sect. 3.6, followed by information content analyses (3.7) and quality control filters (3.8).

3.1 Optimal estimation cost function

The mathematical basis for optimal estimation retrievals is described by Rodgers (2000). Implementation is similar to that of TES (Bowman et al, 2006) with significant differences in the treatment of clouds. The retrieval algorithm minimizes the difference between an observed and a forward-modelled radiance, subject to a quadratic constraint, through the cost function:

$$C = (\mathbf{y} - \mathbf{F}(\hat{\mathbf{x}}, \mathbf{b}))\mathbf{S}_\epsilon^{-1}(\mathbf{y} - \mathbf{F}(\hat{\mathbf{x}}, \mathbf{b}))^{-1} + (\hat{\mathbf{z}} - \mathbf{z}_a)\mathbf{S}_a^{-1}(\hat{\mathbf{z}} - \mathbf{z}_a)^{-1} \quad (1)$$

where:

\mathbf{y} is the vector of measured radiances,

Bill Irion 11/29/2017 3:55 PM

Deleted: Aside from an initial retrieval of the cloud optical depth,

Bill Irion 11/29/2017 3:55 PM

Deleted: r

Bill Irion 11/20/2017 3:21 PM

Formatted: Strikethrough

Bill Irion 11/10/2017 10:42 AM

Formatted: Keep with next

$\mathbf{F}(\hat{\mathbf{x}}, \mathbf{b})$ is the forward-model radiance,

$\hat{\mathbf{x}}$ is the “full” state vector, described below,

\mathbf{b} contains additional variables needed (but not retrieved) and observational metadata (e.g., scan angle) for calculating radiances,

$\hat{\mathbf{z}}$ is the “retrieval” state vector, described below,

\mathbf{z}_a is the a priori retrieval state vector,

$\mathbf{S}_\varepsilon^{-1}$ is the inverse radiance noise covariance, and

\mathbf{S}_a^{-1} is the inverse covariance of the a priori \mathbf{z}_a .

(Note that we accent a retrieved quantity with a caret, e.g., $\hat{\mathbf{z}}$, to distinguish it from the “true” quantity, \mathbf{z} .) [The measurement error covariance, \$\mathbf{S}_\varepsilon\$, contains the radiance noise error covariance from the instrument. It can also contain other random radiance error sources, such as those from forward model calculations, although these have not been included in this study. We discuss the measurement error covariance used below in Sec. 3.3.](#) The a priori state vector, \mathbf{z}_a , is also the first guess in a retrieval. The full state vector, $\hat{\mathbf{x}}$, has as many elements for each retrieved profile constituent (T_{atm} , H_2O , O_3 and CO_2) as there are layers in the forward model at or above ground, plus those for retrieved scalar quantities, T_{sfc} , T_{cldtop} , τ_{cld} and r_{eff} . There are a maximum of 100 layers filled in our forward model from the surface upwards, on its fixed pressure grid with level pressures from 1100 to 0.1 mb (as described in Strow et al., 2003). The pressure layers are constructed as the log-mean of the upper and lower pressures levels:

$$P_{\text{layer}} = \frac{P_2 - P_1}{\ln(P_2/P_1)} \quad (2)$$

Following Bowman et al. (2006), the forward-model layer gridding must be fine enough for calculation of the observed radiance, but is usually much finer than the vertical resolution of a retrieved profile. The retrieval state vector, \mathbf{z} , has a reduced number of layers, which varies by constituent, to reflect a lower vertical resolution. (A maximum 42 layers are retrieved for T_{atm} , 28 for H_2O , 10 for CO_2 and 9 for O_3 .) The retrieved state vector, $\hat{\mathbf{z}}$, is mapped to the full state vector, $\hat{\mathbf{x}}$ when the forward model is called to calculate a radiance:

$$\hat{\mathbf{x}} = \mathbf{M}\hat{\mathbf{z}} \quad (3)$$

In our retrieval, the matrix \mathbf{M} performs a piecewise linear interpolation by log pressure from the lower number of layers in $\hat{\mathbf{z}}$ to the higher number of layers in $\hat{\mathbf{x}}$. For gas profiles, τ_{cld} , and r_{eff} , logarithmic quantities are used in the state vector to ensure that their linear values always remain positive as input to the forward model during retrieval iterations. Retrievals for T_{atm} , T_{sfc} , and T_{cldtop} are linear quantities. The state vector thus usually contains both linear and logarithmic elements. Description and determination of the different elements of the cost function are described in the sections below.

3.2 A priori information

3.2.1 Temperature profile, water vapor, surface temperature, ozone and carbon dioxide

Initial guess profiles for T_{atm} , H_2O , T_{sfc} , and surface pressure (the latter remaining fixed during the retrieval) are derived from ECMWF analysis data, at 0.25° and 6 hour resolution, linearly interpolated in time and space to that of the observed footprint, with vertical profiles linearly interpolated by the logarithm of the retrieval pressure gridding. Initial O_3 profiles are calculated from the climatology of McPeters et al. (2007). A priori CO_2 profiles are calculated by formulae developed by G. C. Toon (personal communication), and are similar to those used by the Total Carbon Column Observing Network (Wunch et al., 2011).

Bill Irion 11/29/2017 3:55 PM

Deleted: , except where noted below for cloud optical depth

3.2.2 MODIS cloud a priori information and mapping to AIRS footprint

For a priori data on $T_{\text{cl,top}}$, τ_{cl} and r_{eff} in each AIRS observation, weighted averages of MODIS Level 2 data are made over the AIRS spatial response function (SpatialRF). An average AIRS SpatialRF is first calculated for the observation (see Schreier et al., 2010). The SpatialRF varies by scan angle and spectral channel, and we make a simple average of the SpatialRF using only the channels used in the retrieval. Using formulae described by Pagano et al. (2015), the spatial response is mapped over the target scene with an approximate resolution of 0.5 km at nadir. MODIS data from the MYD06_L2 (Aqua) product are then mapped in the vicinity of the AIRS observation. These data have a horizontal resolution of about 1 km at nadir. The mapped AIRS SpatialRF is then spatially interpolated onto this MODIS horizontal mapping, and normalized to sum to unity.

Once the AIRS and MODIS footprints are colocated, MODIS retrieval fields for (1 km) cloud-top temperature, cloud optical thickness, and cloud effective radius are extracted and mapped (as data are available). Figure 3 illustrates a sample MODIS $T_{\text{cl,top}}$, τ_{cl} and r_{eff} field overlaid by the AIRS SpatialRF. Weighted averages and weighted standard deviations of the MODIS $T_{\text{cl,top}}$ and r_{eff} are then calculated on the interpolated AIRS SpatialRF, excluding MODIS cloud-free pixels. Calculations are similar for τ_{cl} , except cloud-free pixels are included in the averaging calculation as having an optical depth of zero. From the MODIS Cloud_Mask_1km field, we extract and similarly map the cloud mask status (0 = undetermined, 1 = determined), cloud mask cloudiness (0 = confidently cloudy or fill if status flag = 0, 1 = probably cloudy, 2 = probably clear, 3 = confidently clear) and thin cirrus flags (0 = yes or fill if status flag = 0, 1 = no). The weighted averages of these flags over the AIRS scene are used to decide (a) if the scene is clear, (b) a cirrus cloud too thin for a confident MODIS retrieval of its cloud-top temperature is in the scene, but retrieval by AIRS should be attempted using an assumed cloud-top temperature a priori, or (c) retrieval in a cloudy scene will be attempted using the averaged MODIS cloud data as a priori. We categorize AIRS scenes as clear, thin cirrus, or cloudy (noting that MODIS does not report τ_{cl} and r_{eff} at night), and set a priori cloud data accordingly. We describe the criteria for these bins in turn, and the cloud a priori selected for them.

Clear

An AIRS scene is treated as clear if

- (a) the average for the Cloud Mask Status Flag is greater than 0.95, and
- (b) the average Cloud Mask Cloudiness is greater than 2.5, and
- (c) the average Thin Cirrus Flag is greater than 0.9.

In this case, no cloud information is in the retrieval or full state vector, and the retrieval algorithm goes directly to retrieve T_{atm} , T_{sfc} , H_2O , O_3 and CO_2 .

Thin cirrus daytime and nighttime

A scene is considered to have thin cirrus but of unknown temperature if the average Thin Cirrus Flag is ≤ 0.9 and either the following are true:

- (a) Cloud-top temperature cannot be calculated because of missing values, or
- (b) both average cloud mask status > 0.95 and Cloud Mask Cloudiness > 2.8 .

In this case, we assume a default a priori $T_{\text{cl,top}}$ of 230K. For daytime scenes, the initial τ_{cl} is set to 0.1. For nighttime, the initial optical depth thickness is set to 1. For both day and night, we set the initial r_{eff} at 40 μm .

Cloudy scenes daytime and nighttime

A scene is treated as cloudy (ice or water cloud) if the weighted average of the MODIS cloud-top temperature on the AIRS footprint can be calculated. The result is used as the a priori $T_{\text{cl,top}}$. If τ_{cl} can be calculated, it is used as the a priori, but is set to

no less than 1×10^{-3} . If a τ_{cld} cannot be calculated during daytime, then the a priori τ_{cld} is set to 1×10^{-3} . (This lower limit was set to examine retrieval sensitivity for τ_{cld} , which can depend not only on the true τ_{cld} itself, but also the thermal contrast with the ground. Initial tests indicate that the lower limit for any sensitivity to τ_{cld} is ~ 0.005 .) At nighttime, the a priori τ_{cld} is 1. If the weighted average of the MODIS r_{eff} can be calculated, it is used as the a priori. If the average cannot be calculated, or if it is nighttime, the default r_{eff} is $40 \mu\text{m}$. Lookup tables for cloud absorption and scattering parameters had a particle radii range from 5 to $85 \mu\text{m}$; reported cloud absorption and scattering parameters outside this range rely on extrapolated parameters, and results may not be reliable.

3.2.3 Emissivity

Wavelength-dependent surface emissivities are input as fixed parameters, and are not retrieved or modified; this may be revised in future versions of AIRS-OE. For ocean emissivity, we use the National Center for Environmental Prediction – Environmental Modeling Center (NCEP/EMC) Infrared Sea Surface Emissivity (IRSSE) formulae and coefficients (van Delst, 2003), calculated for channel frequency, view angle and wind speed, with the latter estimated from the ECMWF analysis (described above). Land emissivity is from the Cooperative Institute for Meteorological Satellite Studies, University of Wisconsin - Madison Global Infrared Land Surface Emissivity Database (Seemann et al., 2007). These are monthly maps of land emissivity at 10 wavelengths from 3.6 to $14.3 \mu\text{m}$, gridded spatially by 0.05° . This spatial gridding is smaller than the AIRS footprint, so we spatially interpolate the emissivity to the coincident MODIS gridding (described in Sect. 3.1.2 and as illustrated in Fig. 3). If the target scene is a mixed land/ocean surface, we calculate the ocean emissivities (as above) and use them to fill in the ocean parts of the MODIS grid. With the emissivities at the 10 wavelengths on the MODIS gridding, the AIRS SpatialRF is used to calculate weighted averages. Emissivities for each AIRS retrieval channel are then calculated by interpolation by wavelength from these weighted averages. As the emissivity database does not extend prior to calendar year 2003, we (arbitrarily) use the data from 2003 for observations made in 2002.

3.3 A priori covariances

In this initial evaluation of the retrieval described here, a priori covariances (S_a in Eq. 1) are listed in Table 2. The covariances are ad hoc, but guided by previous experience with AIRS and TES retrievals. We recommend caution in applying resultant errors, although they may still be useful in comparing results between retrievals. Note that H_2O , O_3 , CO_2 , τ_{cld} and r_{eff} are retrieved as \log_e quantities, and the covariances of their logarithms are used. Off-diagonal elements of the covariance matrices are created using assumed length scales:

$$\sigma_{ij}^2 = \sigma_i \sigma_j \exp\left(-\frac{|z_i - z_j|}{l}\right) \quad (4)$$

where:

- σ_{ij}^2 is the off-diagonal covariance for layers i and j ,
- σ_i, σ_j are the square roots of the on-diagonal covariances,
- z_i, z_j are the estimated altitudes, and
- l is the assumed length scale.

Bill Irion 10/30/2017 3:27 PM

Deleted:

Bill Irion 10/30/2017 3:28 PM

Deleted: However, any

Bill Irion 10/30/2017 3:29 PM

Deleted: particle radii outside the range of from 5 to $85 \mu\text{m}$ use

Bill Irion 10/30/2017 3:27 PM

Deleted: cloud absorption and scattering parameters

The off-diagonal length scale for temperature and water vapor was kept low (0.5 km) as this tended to reduce unrealistic retrievals at layers below clouds from adversely affecting retrievals above clouds. (This is discussed further in Sect. 3.9 below.) Covariance matrices are calculated individually for each constituent and then “stacked” into a larger matrix for use in the simultaneous retrieval. At present, we are not using covariances between constituents (say, between temperature and water vapor), but this will be investigated for use in later versions.

Measurement error covariance (S_e in Eq. 1) is taken directly from the radiometric noise reported in the AIRS Level 1b product (see Pagano et al., 2003). This is reported channel-by-channel, without correlations between them. For this study, S_e is a diagonal matrix, and we have assumed the noise to be uncorrelated across channels, Gaussian, and not scene-dependent. A study by Tobin et al. (2007), using Principle Component Analysis on AIRS radiance data, showed the contribution from correlated error can be significant depending on the detector array on the AIRS focal plane. (See also Pagano, 2002.) Channel radiance error can be dependent on the channel radiance in the shortwave above $\sim 2200 \text{ cm}^{-1}$, but these channels are not used in this study. Only a minor dependence of the radiance error on channel radiance is observed in the midwave (~ 1200 to 1700 cm^{-1}) and there is effectively no dependence for channels below $\sim 1200 \text{ cm}^{-1}$. Channels exhibiting non-Gaussian “popping” are flagged, and excluded from analysis of an observation (see Weiler et al., 2005).

As noted above in Sec. 3.1, random errors in the calculated radiances from the forward model (briefly described below in Sec. 3.4) are not added into the measurement error covariance as used in this study. The random errors from the “non-cloudy” part of forward model may be smaller than the noise error from the AIRS instrument for most channels (see, for example, Fig. 2 in DeSouza-Machado et al., 2017), but significant random error may be introduced from the calculation of the cloud absorption and emission, and these require further investigation. It is planned that future versions of the algorithm will include estimates of the random error from the forward model, and the correlated (that is, off-diagonal) parts of the radiometric noise covariance.

3.4 Forward model

The forward model is the Standalone AIRS Radiative Transfer Algorithm (SARTA) (Strow et al., 2003; 2006), supplemented with a delta-four-stream (D4S) calculation for cloud transmissivity (Ou et al., 2013). This joint SARTA+D4S forward model has been used to retrieve ice cloud parameters from single-footprint AIRS observations (Kahn et al., 2014), and of three forward models tested, using SARTA+D4S produced the lowest biases in temperature and water vapor compared to coincident sondes in clear scenes. Here, we use this model to additionally retrieve water cloud properties. For ice clouds, scattering parameters are from Baum et al. (2007). For water clouds, we use Mie scattering parameters calculated using formulae from Mishchenko et al. (2002).

Within the SARTA+D4S forward model, SARTA calculates the cloud-free gaseous transmissivities for each pressure layer and retrieval channel given the temperature and gas profiles, emissivity, scan angle, etc. The D4S code calculates the cloud transmissivities for retrieval channels given a cloud-top temperature, optical depth and particle size. As each pressure layer in the forward model is assumed homogeneous, the gaseous transmissivity for each channel is multiplied with that of the cloud to produce a combined transmissivity within a single layer. Note that this assumes the cloud can be modelled to “fit” in one vertical layer, no matter how thick the cloud. The forward model layer selected for this is the tropospheric layer, lowest in pressure, with an atmospheric temperature higher than or equal to the cloud-top temperature (or the next lower-pressure layer if there the absolute difference between the cloud-top temperature and the layer temperature is less).

Only cirrus parameters are used at cloud-top temperatures below 253.15 K, while only Mie cloud parameters are used at temperatures above 273.15 K. Between these temperatures, we use a sliding weight between Mie and cirrus-derived cloud. This approach may overestimate the amount of ice occurrence as the majority of cloud tops within the temperature range of mixed

phase and supercooled clouds (233 - 273 K) is mostly liquid according to lidar estimates of phase (e.g., Hu et al., 2010). This transition of phase was tested by changing the lower boundary of this “mixed phase” range in the retrieval from 253.15 K to 233.15 K, and reprocessing a test granule (#44, Sept. 6, 2002, described below). Changes were scattered and isolated in retrieved T_{atm} , H_2O and relative humidity (the calculation of which is described in Sec. 3.7.3), and were largest in the boundary layer, with about 7% of retrieved relative humidities changing by more than $\pm 5\%$ at ~ 900 mb. For clouds where the MODIS-derived a priori cloud-top temperature was less than 273.15 K, about 9% of T_{cldtop} changed by more than ± 5 K, and 24% of τ_{cld} changed by more than $\pm 10\%$. However, at low to moderate optical depths (≤ 1) these changes tended to happen in regions where there was a high standard deviation in the MODIS-derived average cloud-top temperature over the AIRS FOV (> 20 K), which is more likely to contain a mixture of ice-only, liquid-only and mixed-phase clouds. Put simply, the clouds in such scenes are more complicated to model, and more investigation is warranted.

This forward modelling of temperature, trace gases and cloud properties, while computationally fast, is best suited for optically and geometrically thin clouds, and may not be well suited for thick clouds, or where significant cloud formations occupy different heights within an AIRS pixel. In this initial effort, these scenes often, but not always produce retrievals with poor spectral fits (described below in Sections 3.7.4 and 3.8) and are filtered out in quality control. We discuss possible ways to improve the forward modelling of clouds in Sec. 6., but we note here that in future versions it may be useful to include an “effective Mie cut-off temperature” as a retrieved parameter in the state vector. Put another way, minimization of the cost function, Eq. 1., would be used to modify the temperature range of the transition from supercooled water to ice clouds. This may more effectively model clouds that contain a mixture of cirrus and supercooled water droplets.

3.5 Retrieval channels

Table 2 lists the spectral channels used in AIRS-OE retrievals. This channel list is similar to that for AIRS-V6, except only longwave channels were used ($< 1650 \text{ cm}^{-1}$). We found that using channels in the shortwave region of the AIRS bandpass would often result in retrievals not converging, or producing unrealistic retrieval quantities. This may be partly related to the shortwave channel radiance noise error being too low in scenes where the radiance was high, as described above in Sec. 3.3, with the algorithm failing to “fit” the calculated spectrum within the underestimated noise of these channels. This also may be related to errors in calculating outgoing radiation from reflected sunlight, which remains a challenge in the near-infrared, particularly in cloudy scenes because of uncertainties in the scattering/absorption ratio (Nakajima and King, 1990; Nakajima et al., 1991). For O_3 , we do not use the $9.6 \mu\text{m}$ band as its inclusion often results in a failure for the retrieval to converge. (As noted by Kulawik et al. (2006b) for the TES retrieval, difficulty in finding a global minimum can happen when retrieving all species at once.) However, including ozone in the retrieval (through its weak absorption within the $14 \mu\text{m}$ CO_2 band) but not including the strong $9.6 \mu\text{m}$ band improves the overall fitting, with fewer failed retrievals. Comparisons of H_2O and T_{atm} with validation measurements also improves (not shown). We therefore retrieve O_3 only as an “interferent” gas solely to improve the fitting within the $14 \mu\text{m}$ CO_2 region, and these O_3 retrievals are not recommended for further study.

3.6 Retrieval by minimization of cost function

After setting the different elements of the cost function (Eq. 1) as described above, the retrieval is performed by iteratively minimizing the cost function by modifying the retrieval state vector \mathbf{z} with a combination Gauss-Newton/Levenberg-Marquardt solver. Formulae are described by Bowman et al. (2006), applying the algorithm of Moré (1977). (See also Sarkissian, 2001.)

A simultaneous retrieval of τ_{cld} , T_{cldtop} , T_{eff} , T_{sfc} , T_{atm} , H_2O , O_3 and CO_2 is made. Convergence tests are as described in Sect. IV.B(2) of Bowman et al. (2006), setting the threshold value, ϵ , of 0.2. If a given retrieval cannot converge within a specified

Bill Irion 11/29/2017 3:56 PM

Deleted: 6

Bill Irion 11/29/2017 3:56 PM

Deleted: 1

Bill Irion 11/2/2017 3:49 PM

Deleted: is likely

Bill Irion 11/2/2017 3:59 PM

Deleted:

Bill Irion 11/2/2017 4:29 PM

Deleted: avoid the $9.6 \mu\text{m}$ band.

Bill Irion 11/2/2017 4:29 PM

Formatted: Subscript

Bill Irion 11/21/2017 2:30 PM

Deleted: Computational efficiency is improved by retrieving in two steps.

Bill Irion 11/15/2017 4:47 PM

Formatted: Strikethrough

Bill Irion 11/15/2017 4:53 PM

Deleted: First, leaving other variables fixed, only τ_{cld} is retrieved as this is usually the source of the largest difference between the observed spectra and one calculated from the a priori. The resultant spectral fit from this initial retrieval can be poor, but this retrieval often provides a better first guess for τ_{cld} for the second step. In this second step, the τ_{cld} value is carried over as a first guess (but leaving its a priori value z_0 the same) into a

Bill Irion 10/31/2017 11:05 AM

Deleted: .

number of iterations, or both the level 2 norm of the trust region (“ Δ ” in Moré, 1997) and linearity measure (“ ρ ”) within the Levenberg-Marquardt solver fall below 10^{-3} , the algorithm is halted and flagged as non-convergent. Converged retrievals are analysed for information content and quality-control (QC) checked as described below.

3.7 Information content and error estimation

3.7.1 Averaging kernels

We assume that the retrieval is nearly linear in the vicinity of the solution, although we caution we have not formally evaluated this assumption. The Jacobian is defined as the matrix of derivatives of the outgoing radiance to changes in each element of the state vector,

$$\mathbf{K}_z = \frac{\partial \mathbf{F}(\hat{\mathbf{z}}, \mathbf{b})}{\partial \mathbf{z}} = \frac{\partial \mathbf{F}(\mathbf{M}\hat{\mathbf{z}}, \mathbf{b})}{\partial \mathbf{z}} \quad (5)$$

and is calculated by finite difference for each retrieval iteration. The gain, \mathbf{G}_z , is a measure of the sensitivity of the retrieval, $\hat{\mathbf{z}}$, to changes in the radiance:

$$\mathbf{G}_z = \frac{\partial \hat{\mathbf{z}}}{\partial \mathbf{F}} = (\mathbf{K}_z^T \mathbf{S}_\epsilon^{-1} \mathbf{K}_z + \mathbf{S}_a^{-1})^{-1} \mathbf{K}_z^T \mathbf{S}_\epsilon^{-1} \quad (6)$$

The gain is multiplied by the Jacobian to produce the averaging kernel matrix, \mathbf{A} , which is a measure of the sensitivity of the retrieval vector, $\hat{\mathbf{z}}$, to changes in the true state, \mathbf{z} :

$$\mathbf{A} = \frac{\partial \hat{\mathbf{z}}}{\partial \mathbf{z}} = \frac{\partial \hat{\mathbf{z}}}{\partial \mathbf{F}} \frac{\partial \mathbf{F}}{\partial \mathbf{z}} = (\mathbf{K}_z^T \mathbf{S}_\epsilon^{-1} \mathbf{K}_z + \mathbf{S}_a^{-1})^{-1} \mathbf{K}_z^T \mathbf{S}_\epsilon^{-1} \mathbf{K}_z \quad (7)$$

This is a square matrix dimensioned $n \times n$, where n is the number of elements of the state vector, and as described below, is useful in calculating the error covariance of the retrieval. Each element of the averaging kernel matrix is a measure of the sensitivity for one retrieved member of a state vector (\hat{z}_i) to the changes in the true value of that member (z_i), or to the true value of a different member (z_j). That is,

$$A_{i,j} = \frac{\partial \hat{z}_i}{\partial z_j} \quad (8)$$

Figure 4 shows a sample averaging kernel from a simultaneous retrieval taken during daytime September 6, 2002 at 18.1°N, 133.8°E, over the Pacific Ocean south of Japan (within the same granule depicted in Fig. 1 of Kahn et al., 2014). A thin cirrus cloud is retrieved with a T_{clctop} equal to 220 K (~155 mb) and a τ_{clctop} of 0.42. The axes indicate the retrieval pressure layers for each constituent, and are not set on a regular altitude or pressure scale. T_{atm} , T_{sfc} and T_{clctop} are retrieved as linear quantities, but H_2O , O_3 , CO_2 , and τ_{clctop} and r_{eff} are retrieved as their natural logarithms and their partial derivatives are reported as such. Note that the color scale is restricted to emphasize the weaker sensitivities. The diagonal of the averaging kernel indicates the sensitivity of a constituent to changes of its true self, while (as will be seen) off-diagonals (within the same constituent) have information on the vertical resolution of the retrieval.

A row of the averaging kernel contains measures of the sensitivity of a single element of the state vector to changes in the true values of itself and other elements. Note how in this retrieval, looking across the row for T_{sfc} , the retrieved surface temperature can be sensitive to changes (and errors) in the true surface temperature itself, the lower tropospheric temperature profile, and the cloud-top temperature. There is little to no sensitivity to changes in H_2O , CO_2 , and O_3 . By contrast, most rows for CO_2 indicate retrieval sensitivity to changes in its true self and also changes in all other retrieved constituents.

Bill Irion 11/8/2017 4:57 PM

Deleted: “

Bill Irion 11/8/2017 4:57 PM

Deleted: ”

Bill Irion 11/8/2017 4:57 PM

Deleted: “

Bill Irion 11/8/2017 4:57 PM

Deleted: ”

Bill Irion 11/8/2017 4:56 PM

Formatted: Font:Symbol

Bill Irion 11/8/2017 4:57 PM

Formatted: Font:Symbol

Bill Irion 11/8/2017 4:58 PM

Deleted: a specified threshold

Bill Irion 11/8/2017 4:58 PM

Formatted: Superscript

Bill Irion 11/21/2017 2:31 PM

Deleted: -

Bill Irion 11/3/2017 9:38 AM

Deleted:

Bill Irion 11/29/2017 4:03 PM

Deleted: 26

Bill Irion 11/29/2017 4:04 PM

Deleted: 0.6

Bill Irion 11/29/2017 4:04 PM

Deleted: 210

Bill Irion 11/29/2017 4:04 PM

Deleted: .1

Bill Irion 11/29/2017 4:04 PM

Deleted: 55

Bill Irion 11/29/2017 4:04 PM

Deleted: properties

A column of the averaging kernel contains measures of the sensitivity of the entire retrieval state vector to changes in a single true state vector element. For example, looking up the T_{sfc} column, all constituent retrievals are affected somewhere (even if only weakly) by sensitivity to changes in the true surface temperature. By contrast, looking at the columns for CO_2 , changes in the true CO_2 tend to affect the retrieved CO_2 but not other constituents.

5 The averaging kernel can be subdivided to provide sensitivity data on scalar values (e.g., T_{sfc} and individual cloud properties), or sensitivity and vertical resolution for individual profiles. Figure 5 shows the retrievals, individual averaging kernels and ancillary information for the T_{atm} and H_2O profiles (using the parts of the averaging kernel matrix that are $\partial \hat{T}_{\text{atm}} / \partial T_{\text{atm}}$ and $\partial \ln [\hat{\text{H}_2\text{O}}] / \partial \ln [\text{H}_2\text{O}]$, respectively.) The leftmost panel shows the a priori and retrieved temperature profile, along with the estimated error (discussed below). For clarity, the error is shown as a separate line (with a separate axis) rather than an error bar. The second

10 panel shows the rows of the T_{atm} averaging kernel, along with its row sums. An averaging kernel can be examined to better understand the sensitivities of the measurement and retrieval. Note, for example, that the temperature averaging kernel rows are comparatively low in the boundary layer (≥ 750 mb), indicating lowered sensitivity to changes in the true temperature, but sensitivity increases at altitudes above this in the free troposphere. These changes in sensitivity affect the error (in the leftmost panel) which reaches a minimum in the region ~~about 380~~ about 380 mb. The row sum of an averaging kernel row is a rough, but useful

15 indicator of how much a retrieval relies on the data for its results (see Sec 3.1.5 of Rodgers, 2000). A row sum near unity indicates that the retrieval at that layer relies mostly from the observed spectral data, while a value near zero indicates mostly reliance on the a priori.

While the row sums are indicative of how much information came from the observation, they do not indicate vertical resolution. Indeed, a visual inspection of the temperature averaging kernel rows in the left panel of Figure 5 shows that while the row sums

20 are high in the region between about 300 to 100 mb, the widths of the peaks are much broader than those below at higher pressures. To estimate vertical resolution, we use a simple full-width-at-half-maximum calculation for each averaging kernel row, using a Gaussian fit and assuming a 7 km scale height in converting pressure to altitude. (Other approaches are described in Ch. 3.3 of Rodgers, 2000.) From this fitting approach, shown in the third panel of Figure 5, the vertical resolution is about 1 to 1.5 km from the ground to about 300 mb, above which the resolution of the T_{atm} retrieval quickly degrades. The fitting approach

25 used here is not useful at pressures less than about 200 mb where the rows of the T_{atm} averaging kernel become much flatter, and can be double-peaked when crossing the tropopause.

The right three panels of Figure 5 show the H_2O a priori, retrieval and error, averaging kernel with row sums, and estimated vertical resolution. (As the logarithm of the H_2O volume mixing ratio is retrieved, the upper and lower errors of the retrieval in linear space are slightly different. They are shown as separate lines rather than error bars for clarity.) As with T_{atm} , the averaging

30 kernel at pressures greater than 750 mb indicates lower sensitivity in the boundary layer. Sensitivity improves and is fairly constant between 750 mb up to about 200 mb, above which sensitivity decreases and effectively disappears at 100 mb. The rightmost panel of Figure 5 shows the approximate vertical resolution. The “flattened” averaging kernels near the boundary layer leads to a local maximum in the vertical resolution of ~3.5 km is seen at about 800 mb, but the averaging kernel rows become more sharply defined at lower pressures. This improved definition is reflected in the vertical resolution, which is about 1.8 km at

35 700 mb, and steadily increases above to a maximum of 4.3 km at 175 mb.

Note for an AIRS retrieval, an averaging kernel is scene dependent. Sensitivities at different layers depend on the amounts of trace gases present, the temperature lapse rate, the particulars of the cloud field, the view angle, and the spectral channels employed. Scene dependence has been noted in studying averaging kernels and vertical resolution from the (Version 5) AIRS operational results (Maddy and Barnett, 2008.) Since the AIRS-OE retrievals are simultaneous and not sequential, the averaging

Bill Irion 11/29/2017 4:05 PM
Deleted: broad

Bill Irion 11/29/2017 4:05 PM
Deleted: from about 600 t

Bill Irion 11/29/2017 4:05 PM
Deleted: o

Bill Irion 11/29/2017 4:05 PM
Deleted: 5

Bill Irion 11/21/2017 2:53 PM
Deleted: spectrum

Bill Irion 11/29/2017 4:06 PM
Deleted: 4

Bill Irion 11/29/2017 4:06 PM
Deleted: 6

Bill Irion 11/29/2017 4:06 PM
Deleted: 200

kernel describes dependencies within and between retrievals of different constituents, and can be used to more robustly calculate uncertainties as described below.

3.7.2 Error estimation

The smoothing error covariance measures the uncertainty in the fine structure of the retrieval due to the measurement's limited vertical resolution. However, as we have an averaging kernel from a joint retrieval, the smoothing error also indicates how the uncertainty in one retrieved constituent affects the uncertainty in another:

$$\mathbf{S}_s = (\mathbf{A} - \mathbf{I}_n) \mathbf{S}_a (\mathbf{A} - \mathbf{I}_n)^T \quad (9)$$

(See Sect. V(B) of Bowman et al., 2006, and Sections 3.4 and 4.1 of Rodgers, 2000.)

The retrieval noise error covariance calculates the impact of the radiance noise on the retrieval:

$$\mathbf{S}_m = \mathbf{G}_z \mathbf{S}_\epsilon \mathbf{G}_z^T \quad (10)$$

Again, as noted in Sec. 3.3 and as used here, \mathbf{S}_ϵ is a diagonal matrix; future versions of the retrieval will include off-diagonal components and estimates of the forward model random error to more accurately reflect the error covariance. With substitutions, these terms can be added to provide the covariance of the maximum a posteriori solution:

$$\hat{\mathbf{S}} = (\mathbf{K}_z^T \mathbf{S}_\epsilon^{-1} \mathbf{K}_z + \mathbf{S}_a^{-1})^{-1} \quad (11)$$

with the square roots of the diagonal reported as errors for the state vector. Note also that the total retrieval error does not include any systematic errors from the forward model (e.g., those due to instrumental lineshape errors, spectral biases or other errors that are correlated across observations), although we note the SARTA model is “tuned” to better match outgoing radiances as calculated from coincident measurements and analyses (see Strow et al., 2006). We again emphasize that since our a priori covariances are ad hoc, caution should be observed in using the reported errors.

For this initial version of our algorithm, we have not implemented code to calculate the model parameter error, which contains the uncertainty from parameters affecting the retrieval, but are not retrieved themselves (e.g., surface pressure, emissivity, scan angle, etc.):

$$\mathbf{S}_{mp} = \mathbf{G}_z \mathbf{K}_{Psurf} \mathbf{S}_{a,Psurf} (\mathbf{G}_z \mathbf{K}_{Psurf})^T + \mathbf{G}_z \mathbf{K}_{emis} \mathbf{S}_{a,emis} (\mathbf{G}_z \mathbf{K}_{emis})^T + \dots \quad (12)$$

In this case, the total retrieval error covariance would be the sum of Eqs. (11) and (12):

$$\mathbf{S}_{tot} = \hat{\mathbf{S}} + \mathbf{S}_{mp} \quad (13)$$

The addition of the model parameter error (Eq. 12) is planned for future development.

For constituents retrieved in logarithmic space, the error reported for the i 'th element, ϵ_i , is the error in the logarithm of the retrieved value, \hat{z}_i , with the range [lower, upper] of the retrieval in linear space being:

$$[\exp(\hat{z}_i - \epsilon_i), \exp(\hat{z}_i + \epsilon_i)] \quad (14)$$

3.7.3 Calculation of Relative Humidity and Error

In calculating relative humidity (RH), we use the layer retrievals of temperature and water vapor. Eqs. (2.5) and (2.21) of Wagner and Pr   (2002) are used to determine saturation pressures of water vapor over liquid and ice. At temperatures between 253.15 and 273.15K, we set saturation pressure as a sliding-scale weighted average of those over ice and over water. The relative humidity error calculation uses recalculated RHs adding the errors from the temperature and (separately) the positive, linear

Bill Irion 11/1/2017 4:10 PM

Deleted: systematic

Bill Irion 11/1/2017 4:12 PM

Deleted: as input to, or

Bill Irion 11/29/2017 4:07 PM

Deleted: .

Bill Irion 11/3/2017 11:40 AM

Deleted:

value of the water vapor error (the right-hand side of Eq. 14). We report the relative humidity uncertainty as the root-sum-of-squares of the differences between these re-calculated relative humidities and the reported values.

3.7.4 Chi Square Fitting Parameter

The chi square fitting parameter, χ^2 , is a goodness-of-fit statistic of how well a spectrum's radiance is fitted within the bounds of the radiance error:

$$\chi^2 = \frac{1}{N} \sum_{i=1}^N \left(\frac{y_i - [F(x,b)]_i}{\varepsilon_i} \right)^2 \quad (15)$$

where N is the number of channels, and ε_i is the radiance error in channel i . A $\chi^2 \gg 1$ indicates a poor spectral fit to the observed radiance. While the χ^2 does not directly enter into the error characterization, it is used in quality control as described below.

3.8 Quality control (QC) filtering

Retrievals that do not meet the following three criteria are filtered out:

1. Normal convergence within the maximum specified number of iterations,
2. Chi square fitting parameter, $\chi^2 < 3$, and
3. Retrievals in layers with $T_{\text{atm}} > (T_{\text{cl,top}} - 10 \text{ K})$ require a surface temperature averaging kernel > 0.6 .

The first criterion is to avoid waste of computational resources on poorly- or non-converging retrievals. The second criterion is to avoid reporting profiles with poor spectral fits. This often happens under ice cloud conditions when the cloud optical depth is high (≥ 20); it's likely that the radiative transfer is incorrectly calculated because a cloud is assumed to "fit" in one vertical model layer while in reality, thick clouds extend over many model layers. Poor spectral fits can also often occur when there was a high standard deviation, $\geq 20\text{K}$, of the MODIS 1 km cloud-top temperature weighted over the AIRS spatial response function.

Again, we suspect that this poor fitting is from limitations in our forward model which is limited to one cloud layer; the radiative transfer calculation can be inadequate when there were several cloud tops at different temperatures within the AIRS footprint.

The third criterion is a means to remove layers of a profile that have unphysical values of the relative humidity calculated from the retrieved temperature and water vapor; these are usually in or near the boundary layer. We again note that a cloud's transmissivity is incorporated in only one layer of the forward model vertical pressure grid, no matter how thick the cloud. We

hypothesize that this can lead to erroneous outgoing radiances for temperature and water vapor channels in regions at or below moderately thick clouds, which in turn, produces erroneous Jacobians and averaging kernels. However, surface temperature retrievals appear to more correctly give a low-to-zero averaging kernel under moderate-to-thick cloud optical depths. We therefore require that retrievals at layers below clouds must "see" the surface (determined by the T_{sfc} averaging kernel having a minimum of 0.6). For retrievals above clouds where the surface temperature averaging kernel is less than 0.6, an additional thermal contrast provided by 10 K buffer between the cloud top and the lowest profile layer to pass quality control eliminates more unphysical retrievals. Most, but not all of the retrievals that produce unphysically high relative humidities are eliminated by this method, usually in the boundary layer.

4 Results

For initial examination of cloud, temperature and H₂O profile retrievals for this effort, we use results of an AIRS daytime granule (#44) over the subtropical western Pacific Ocean from September 6, 2002. This is the same granule examined and discussed in detail by Kahn et al. (2014) for AIRS-V6 cloud products. This granule has a large mix of cloud types and weather regimes, including a tropical cyclone to the west, and a mix of low and mid-level clouds from the center to the east and to the south. For an AIRS granule, there are 90 observations on the cross-track, and 135 observations along-track. Here, the yield of retrievals passing quality control for at least some layers is ~56% of 12150 observations. In the following sub-sections, we compare our results to those of different algorithms operating on the same scenes. “MODIS-avg” retrievals are from the MODIS 1 km pixels (MYD06 dataset) in a weighted average over the AIRS SpatialRF, as described above in Sect. 3.2.2.

4.1 Cloud-top temperature, effective cloud optical depth, and effective cloud particle radius

Figure 6 displays cloud-top temperatures (T_{cldtop}), effective optical depths (τ_{eff}), and effective particle radii (r_{eff}) from the a priori (left column) and AIRS-OE retrievals (center column) from the granule described above, along with retrieval averaging kernels (right column). With few exceptions, the a priori are generated from co-located MODIS-avg retrievals. Retrieved quantities have similar fields to their a priori. As indicated by the averaging kernels, sensitivity is enhanced for ice clouds, which is likely because of the higher thermal contrast with the surface. For all clouds as they get thicker, their infrared radiation is more dominant in the window channels, producing a more confident retrieval. An examination (not shown) indicates that the T_{cldtop} averaging kernels reach ~0.5 at cloud optical depths of about 0.4 for ice clouds, and between 1 and 2 for water clouds. (An averaging kernel of 0.5 indicates that roughly half the information of the retrieval is from the spectral data and half is from the a priori.) We do note, however, that the retrievals can fail quality control at or near the thick center of the cyclone, likely for reasons described in Sect. 3.4.

4.2 Comparison with CloudSat/CALIPSO

We make an additional “snapshot” comparison with (multilayer) cloud observations by the combined CloudSat cloud profiling radar (Stephens et al., 2002) and the Cloud-Aerosol Lidar and Infrared Pathfinder Satellite Observations lidar (CALIPSO; Winker et al., 2007), using the 2B-CLDCLASS-LIDAR product (Wang et al., 2013). Figure 7 compares AIRS-OE cloud-top retrievals against near-coincident CloudSat/CALIPSO (CsC) observations, using the same date and region as in Figure 2 of Wang et al. (2016), who compared MODIS cloud classifications and CsC profiles. (As did Wang et al. (2016), the horizontal axis is ordered by decreasing latitude.) The upper two panels show AIRS-OE cloud optical depths and cloud-top temperatures from a daytime July 31, 2009 swath over the Pacific (latitude on the horizontal axis) with the CsC transect overlaid. The third panel shows the vertical extent of the clouds from CsC (in grey). Superimposed are the approximate cloud-top altitudes of the QC-passed AIRS observations (no more than one per AIRS cross-track) closest to the CsC transect. (Note that the distance between the center of an AIRS observation and the closest CsC observation can be up to 7.5 km). The AIRS observations in this panel are colored by the AIRS-OE retrieved cloud optical depth. The bottom panel again shows the CsC cloud layer and AIRS-OE cloud-top altitudes, but colored by the AIRS-OE cloud-top temperature averaging kernel, which can be used as a measure of confidence in the AIRS cloud-top altitude.

Similar to the (1 km footprint) MODIS retrieval on the same transect (see Figure 2 of Wang et al., 2016), AIRS-OE retrieves cloud tops at a lower altitude than CsC for the thicker regions of the cirrus clouds (marked “A” and “B” in Figure 7). This is similar to comparisons of AIRS Version 5 cloud retrievals to CsC by Kahn et al. (2008), citing Holz et al. (2006) in how infrared retrievals of cirrus tend to place the cloud-top 1 to 2 km or more below the physical cloud top. The retrieval does not pass quality

Bill Irion 11/29/2017 4:07 PM

Deleted: In the following figures, to provide a large-scale meteorological context, MODIS-derived data are also shown including those footprints where the AIRS-OE retrieval failed. (

Bill Irion 11/29/2017 4:07 PM

Deleted: 7

Bill Irion 11/29/2017 4:07 PM

Deleted:)

Bill Irion 11/3/2017 3:19 PM

Deleted: The morphology of the AIRS-OE retrieval fields are similar to the a priori, and the morphology of the averaging kernel fields are similar to each other.

Bill Irion 11/3/2017 3:41 PM

Deleted: S

Bill Irion 10/30/2017 10:49 AM

Deleted: QA

control at a few points over the deep convective core, likely because radiance spectra above such deep clouds can be poorly calculated by our forward model. Significant differences in cloud-top altitude are notable along the thin cirrus between about 5° and 12° (“C”), with retrieved optical depths of about unity or less. However, a close examination of the cloud-top temperature and cloud optical depth fields in the upper panels between 10°N and 5°N show that the CloudSat/CALIPSO transect is on the edge of a thin north-south aligned strip of ice cloud, and the center of the closest AIRS observations to the CsC transect were between 2 to 5 km apart, so some sampling bias may be present. Similarities and differences shown in Figure 7 may be broadly similar to previous AIRS/MODIS/CloudSat/CALIPSO comparisons (e.g., Kahn et al., 2007; 2008), but here it illustrates the feasibility of forward-modeling clouds explicitly in a hyperspectral IR retrieval, simultaneous with temperature and trace gases.

4.3 Temperature, water vapor and relative humidity profiles

Figure 8 presents maps of T_{atm} (top row), H_2O (middle row) and a calculated relative humidity (RH; bottom row) at the 918 mb layer for the September 6, 2002 granule discussed above. For comparison, the left column shows results from the operational AIRS-V6 retrievals, interpolated by $\log(\text{pressure})$ to the AIRS-OE retrieval layer. Note that the AIRS-V6 retrievals used cloud-cleared radiances on the AMSU footprint, each point covering an area approximately nine times that of a single AIRS infrared footprint. The second column shows the initial guess for each retrieval quantity, calculated by linear interpolation in time and space and vertically by $\log(\text{pressure})$ from 6 hour ECMWF analyses. The third column shows the AIRS-OE retrievals passing the quality control criteria described in Sec 3.7. The fourth column shows the estimated error of the AIRS-OE retrieval. Note that H_2O is presented in volume mixing ratio, not mass mixing ratio. Comparing AIRS-OE relative humidity to its a priori or AIRS-V6 shows significant local differences in relative humidity, and many unphysically high RH values (> 100%) throughout the region studied. We note, however, that the calculated error for the AIRS-V6 relative humidity at this layer is fairly high, with a median of 28.7% with an interquartile range (IQR, that is, the range between the 25th and 75th percentiles) of 26.0 to 31.8%. The AIRS-OE relative humidity is biased high compared to AIRS-V6, with a median bias of 8.5% (IQR = -1.3 to 19.1%).

At 525mb (Figure 9), qualitative agreement for T_{atm} , H_2O , and RH is improved compared to 918 mb across the ECMWF-derived a priori, AIRS-V6 and AIRS-OE. However, the AIRS-OE retrieval for H_2O begins to depart from the a priori to more closely resemble the AIRS-V6 retrieval. For example, the a priori shows a smaller region of higher water vapor to the east of drier air near 30°N and 135°E (“A”) while AIRS-V6 and AIRS-OE show this region to be larger. The AIRS-OE median relative humidity error is 16.1% (IQR = 12.0 to 19.9%), smaller than that at the 918 mb layer. Regional biases in the H_2O and RH of AIRS-OE compared to AIRS-V6 can again be readily seen, although the median RH bias is reduced to 0.4% (IQR = -4.4 to 6.7%).

At 321 mb (Figure 10), the AIRS-OE temperature field shows a much broader region of cold air than either AIRS-V6 or the a priori (dark blue overlaid by “A”). However, the H_2O and RH fields of AIRS-V6 and AIRS-OE more resemble each other than the a priori, and the additional horizontal resolution of AIRS-OE allows sharper boundaries to be seen between dry and wet regions. Although there are still many missing pixels in AIRS-OE, there is improved definition in the boundaries between lower and higher values of the H_2O volume mixing ratio (“B” in upper left). For relative humidity, note that the region of humid air near 32°N and 140°E in AIRS-V6 (“C”) is more fully resolved as three small but distinct regions in AIRS-OE. The median error of the AIRS-OE relative humidity is 13.1% (IQR = 7.2 to 19.7%). The median bias of the AIRS-OE relative humidity compared to AIRS-V6 is 0.1% (IQR = -4.0 to 7.2%), similar to the 525 mb layer.

As a test of the algorithm’s sensitivity to the infrared spectrum, Figure 11 compares the 321 mb retrieval of relative humidity under different a priori. The left panels show the relative humidities calculated from T_{atm} and H_2O a priori as interpolated from ECMWF analyses (as above), a climatology, and the neural-net a priori of the current AIRS-V6 retrieval scheme. The right

Bill Irion 11/22/2017 3:39 PM

Deleted: all

Bill Irion 11/3/2017 3:44 PM

Deleted: of these

Bill Irion 11/22/2017 2:04 PM

Deleted: 9

Bill Irion 11/22/2017 2:05 PM

Deleted: 9.0

Bill Irion 11/3/2017 2:55 PM

Deleted: G

Bill Irion 11/22/2017 2:05 PM

Deleted: 1

Bill Irion 11/22/2017 2:05 PM

Deleted: 7

Bill Irion 11/29/2017 4:09 PM

Deleted: “curl”

Bill Irion 11/29/2017 4:09 PM

Deleted: through

Bill Irion 11/29/2017 4:09 PM

Deleted: blue color overlaid by

Bill Irion 11/29/2017 4:09 PM

Deleted: more uniform

Bill Irion 11/22/2017 2:07 PM

Deleted: 6

Bill Irion 11/29/2017 4:09 PM

Deleted: those

Bill Irion 11/22/2017 2:07 PM

Deleted: -

Bill Irion 11/22/2017 2:07 PM

Deleted: 5

Bill Irion 11/22/2017 2:07 PM

Deleted: 3

Bill Irion 11/22/2017 2:07 PM

Deleted: 4

Bill Irion 11/22/2017 2:08 PM

Deleted: 2

Bill Irion 11/22/2017 2:08 PM

Deleted: 6

Bill Irion 11/22/2017 2:08 PM

Deleted: 2

Bill Irion 11/22/2017 2:08 PM

Deleted: 6

Bill Irion 11/22/2017 2:08 PM

Deleted: 9

panels show the AIRS-OE relative humidity retrievals from these different a priori. In all cases, MODIS-avg data are used as cloud a priori. While showing some differences in the details, all retrieval relative humidity fields show a similar structure, indicating good sensitivity of the retrieval in the free troposphere over the ocean.

A rough estimation of the sensitivity as a function of pressure is shown Figure 12, using averages of the row sums of the T_{atm} and H_2O averaging kernels from quality control-passed layers. The left panel of the Figure 12 shows these profiles using ECMWF data as a priori. (Results using climatology or the neural net, as in Figure 11, were similar.) Error bars are 1σ standard deviations. The right panel shows the yield of quality control-passed retrievals. Temperature retrievals generally indicate a low-to-moderate sensitivity at the surface, but increase with altitude to about 600 mb, then show high sensitivity upwards through 100mb. Similarly, water vapor sensitivity is low to moderate at the surface, but quickly increases with altitude. Sensitivity is high from about ~850 mb to about 225 mb, above which it markedly decreases and is small across the 100 mb level. The right-hand graph shows yield increasing with altitude, as more retrievals become available above the cloud tops. It should be emphasized that the sensitivity of the retrieval of a constituent, as indicated by the averaging kernel and its row sums, is dependent not only on the strength of the Jacobians (Eq. 5), but also the size of the a priori covariance (Sec. 3.1). As the a priori covariances used in this study are ad hoc, the sensitivity of the AIRS-OE retrieval (as illustrated by, say, Fig. 12) could change as the a priori covariances variances are refined in future versions.

5 Comparison with radiosondes

5.1 MAGIC campaign sondes

AIRS-OE retrievals of temperature and water vapor are compared with radiosonde profiles from the ship-based Marine ARM GPCI Investigation of Clouds (MAGIC) campaign of September, 2012 through October, 2013. Sondes were launched from a Department of Energy Atmospheric Radiation Measurement mobile facility atop a container ship travelling between Honolulu and Los Angeles. An extensive description of the MAGIC field campaign, and comparison of AIRS-V6 and ECMWF ERA-Interim reanalysis water and temperature results with MAGIC has been reported by Kalmus et al. (2015). Figure 13 illustrates the location of the sondes matched to AIRS (launched within 3 hours and 100 km of an AIRS observation), colored by the number of successful retrievals at 321 mb; anywhere from 3 to 105 successful AIRS-OE observations are achieved as matchup to a single sonde.

Whether an AIRS-OE retrieval is successful at a particular pressure layer depends in large extent on the particularities of the cloud cover, and so the number of successful retrievals can vary widely for matched radiosondes. For example, of the 210 MAGIC sondes that were coincident with AIRS observations, an average of 41 ± 26 (1σ) AIRS-OE successful retrievals were made for each sonde at 321 mb, while at 918 mb, an average 29 ± 25 retrievals were made (not shown). Simply taking a global average (or even a global median) of the differences between AIRS retrievals and sonde observations can introduce significant sampling biases, with clear or nearly clear areas over-represented. We also found that average bias could often be significantly skewed by retrieval outliers – usually because the water vapor and relative humidity were unphysically high. Thus, to calculate an overall bias between AIRS-OE and the MAGIC sondes, and compare this to the a priori and AIRS-V6 results, we report the “median of the medians,” calculated in this manner:

- (a) For the ensemble of a priori and QC-passed retrievals for a single sonde, we calculate the median T_{atm} bias, RH bias, and relative bias in H_2O (e.g., $[\text{AIRS} - \text{sonde}] / \text{sonde}$) in %).

Bill Irion 11/27/2017 10:24 AM

Deleted: a robust

Bill Irion 11/21/2017 4:30 PM

Deleted: 2

Bill Irion 11/21/2017 4:29 PM

Deleted: 6

Bill Irion 11/21/2017 4:29 PM

Deleted: 2

Bill Irion 11/3/2017 4:04 PM

Deleted: lower down

Bill Irion 11/21/2017 4:30 PM

Deleted: 30

Bill Irion 11/21/2017 4:30 PM

Deleted: 1

Bill Irion 11/3/2017 4:08 PM

Deleted: from

Bill Irion 11/3/2017 4:06 PM

Deleted: unphysical

Bill Irion 11/14/2017 3:51 PM

Deleted: retrieval

Bill Irion 11/3/2017 4:07 PM

Deleted: was

Bill Irion 11/3/2017 4:06 PM

Deleted: too

Bill Irion 10/30/2017 10:49 AM

Deleted: A

(b) We do the the same as above for AIRS-V6 observations, but only where a successful AIRS-OE retrieval is within an AIRS-V6 footprint, and only layers that have an AIRS-V6 quality control of 0 (best) or 1 (good). As there can be up to nine AIRS-OE retrievals within an AIRS-V6 footprint, an AIRS-V6 retrieval is only entered once in calculating the median to avoid over-counting.

5 Note that these criteria for matching up sondes and AIRS-V6 observations are different from Kalmus et al. (2015), so caution should be taken in comparing results here with that work. Also, since the inclusion of an AIRS-V6 profile in calculations depends on the QC result of an AIRS-OE retrieval, these data should not be taken as validation of AIRS-V6 results. Note also that the AIRS-V6 uses a different a priori than AIRS-OE, and the AIRS-V6 a priori is not shown or compared here.

10 Figure 14 illustrates the median temperature profile differences between the a priori, AIRS-OE, and AIRS-V6 retrievals for T_{atm} , the relative difference for H_2O , and the difference in RH compared to the MAGIC sondes. Thin lines indicate the 25th and 75th percentiles of the distributions. For temperature, AIRS-OE (blue line) shows a negative bias of 0.65K at the surface, and increasing to a maximum of 0.9K at 865mb. The positive bias continues to about 400 mb, and is higher than either the a priori or AIRS-V6. Between 400 mb and 200 mb, the AIRS-OE retrieval is within 0.3K, as are the a priori and AIRS-V6. For water vapor, the (global median) relative bias of AIRS-OE retrievals stays within 10% of the sondes from the surface to about 800 mb, where it increases to about a 20% bias at 525 mb, decreases to a 3% bias at 321 mb, and then increases again, as do the a priori and AIRS-V6 retrievals. For the bias in relative humidity, except for a local minimum of -4% at 840 mb, biases are positive and tend to be within 5% up to 200mb, but this good agreement may be partly due to compensating biases in temperature and water vapor.

5.2 Tropical Western Pacific (TWP), Southern Great Plains (SGP) and North Slope of Alaska (NSA) sondes

20 For these comparisons, we use AIRS observations co-located with high quality radiosondes launched from ground-based sites of the U. S. Department of Energy's Atmospheric Radiation Measurement (ARM) Climate Research Facilities. Inclusion criteria and median bias calculations are similar to those for the MAGIC sondes (Sec. 5.1). Figure 15 illustrates the median temperature biases, water vapor relative biases and relative humidity biases for the ECMWF analysis-derived a priori, and the AIRS-OE and AIRS-V6 retrievals over the TWP site at Nauru, the SGP site in Oklahoma, and the NSA site in Alaska.

25 For temperature, all three sites show AIRS-OE median biases for temperature below ± 1 K, and median relative biases for H_2O to mostly within $\pm 1.5\%$. At TWP, AIRS-OE generally shows larger biases compared to the a priori for temperature, but is similar to the ECMWF-derived a priori for H_2O and relative humidity from about 800 mb up to about 200 mb. At SGP, AIRS-OE shows a of high bias of ~ 0.7 K between the surface to 400 mb, but slightly improves upon the a priori water vapor for most of the troposphere, except near 700mb. AIRS-OE relative humidity biases compare well with the a priori. At NSA between about ~ 800 and ~ 220 mb, AIRS-OE temperature biases are low (less than ± 0.25 K) at altitudes above ~ 800 mb, as are water vapor relative biases (less than $\pm 7\%$). Relative humidities are improved compared to the a priori from the surface to about 400 mb. While again we caution that the results in Figure 15 should not be taken as validation for AIRS-V6, we note that the single footprint retrieval AIRS-OE results generally compare well with the cloud-cleared spectra results of AIRS-V6.

6 Summary and Discussion

35 We have presented a new retrieval scheme for the AIRS instrument, AIRS-OE, which uses MODIS results as cloud parameter a priori, and a forward model that incorporates cloud effects in its radiative transfer. As AIRS-OE directly uses Level 1b spectra in

Bill Irion 10/30/2017 10:49 AM

Deleted: A

Bill Irion 11/21/2017 4:31 PM

Deleted: 3

Bill Irion 11/21/2017 4:32 PM

Deleted: 6

Bill Irion 11/21/2017 4:32 PM

Deleted: 65

Bill Irion 11/22/2017 2:21 PM

Deleted:

Bill Irion 11/27/2017 10:24 AM

Deleted: 4

Bill Irion 11/22/2017 2:21 PM

Deleted: 0

Bill Irion 11/22/2017 2:23 PM

Deleted: does as well or better than

Bill Irion 11/14/2017 3:17 PM

Deleted: to about 200 mb

Bill Irion 11/29/2017 4:10 PM

Deleted: -

Bill Irion 11/27/2017 10:24 AM

Deleted: 4

Bill Irion 11/29/2017 4:10 PM

Deleted: In particular, we note the improvement in relative humidity retrievals throughout most of the troposphere at TWP, and in the boundary layer for SGP and NSA.

Bill Irion 11/27/2017 10:26 AM

Deleted: Level 2 data

retrievals, and not [Level 2](#) cloud-cleared spectra as done in AIRS-V6, it improves the nadir horizontal resolution over AIRS-V6 from ~45 km to ~13.5 km. Focusing on cloud parameters, and temperature and water vapor profiles, we have presented some initial comparisons to currently operational AIRS Version 6 products. The improved horizontal resolution has been shown to provide greater detail in water vapor and relative humidity fields in the free troposphere. As AIRS-OE rests on an optimal estimation framework, and includes simultaneous retrieval of profiles and scalar variables, it has an information content analysis that operates both within [an atmospheric parameter \(e.g., uncertainties in the temperature profile\)](#) and across different atmospheric parameters [\(e.g., uncertainties in water vapor due to uncertainties in temperature\)](#). Initial comparisons against co-incident radiosondes indicate that retrieval biases for temperature and water vapor profiles are at least competitive with AIRS-V6.

Some aspects of this new retrieval need development. More realistic clouds in the forward model, with multiple cloud decks or clouds that extend over several model layers, will likely allow more footprints to be successfully analysed. A better a priori τ_{clid} at nighttime may be made by comparing brightness temperatures in the window channels to the a priori surface temperature, similar to Kulawik et al. (2006a). [Noting the work of DeSouza-Machado et al. \(2017\), it may be useful combining MODIS and numerical weather prediction cloud data to determine an a priori for the cloud-top height, particle size, optical depth \(or liquid/ice column\) and horizontal and vertical extent of cloud in the AIRS FOV.](#) Improved cloud results will hopefully better leverage and compliment the spatial coverage and horizontal resolution of MODIS, and the vertical precision and detail of CloudSat/CALIPSO. A forward model incorporating scattering by dust and other aerosols [\(as previously done for AIRS by DeSouza-Machado et al., 2006; 2010\)](#) would open more regions for analyses. [\(See also Maddy et al., 2012.\)](#) Efforts can be made in better modeling the outgoing daytime radiance of the shortwave channels of AIRS ($> 2200 \text{ cm}^{-1}$) [and improving the radiance noise error estimate, so we can more fully](#) exploit the spectral range of the instrument, particularly near the $4 \mu\text{m}$ CO_2 band. An observation-based a priori covariance (including cross-species covariances), specific to region and season, would provide improved constraints and more realistic retrieval errors. [Adding in retrieval linearity estimates, such as those described in Sec 5.1 of Rodgers \(2000\), would help in flagging those retrievals where the error estimation may be suspect.](#) A method of assigning ground-level snow and ice conditions to observations is needed – possibly from the co-located AMSU microwave instrument or other near-real-time data (see Pope et al., 2014). Addition of effective emissivity retrievals will likely be necessary to improve results over “difficult” regions, such as deserts or mountains. [If the emissivity field is highly variable within the AIRS FOV \(say, on a coastline\), weighting by the MODIS cloud mask can help](#) determine an a priori emissivity as it affects the AIRS observation by taking cloud cover into account. The algorithm could be extended to better retrieve O_3 using its $9.6 \mu\text{m}$ band, as well as retrieve CH_4 , CO and other gases within the AIRS bandpass. Successful implementation of these improvements may be challenging (or at least time-consuming) but could prove useful not just to single-footprint retrieval from AIRS, but to other instruments such as CrIS and IASI.

Since the design stage of the AIRS instrument in the 1990’s, increased computing power and advances in modeling cloudy spectra allow new approaches to utilize the high spectral resolution output of existing infrared sounders. The horizontal resolution gained by avoiding cloud-clearing can provide more nuanced data for water vapor, especially where it is highly variable at smaller spatial scales. Even with the algorithmic liens described, [initial](#) results presented here indicate AIRS-OE retrievals on cloudy infrared spectra can compare well with operational AIRS-V6 retrievals that require cloud-clearing. [Additional](#) improvements in execution speed and data handling [are](#) needed before this work can become operational like AIRS-V6. However, with some 16 billion AIRS infrared spectra since launch in 2002, numerous opportunities are available for targeted studies with this new algorithm.

Bill Irion 11/3/2017 4:26 PM

Deleted: Initial tests indicated a robust retrieval sensitivity using different a priori.

Bill Irion 11/14/2017 3:54 PM

Deleted: .

Bill Irion 11/3/2017 11:48 AM

Deleted: which now limit us in fully

Bill Irion 11/3/2017 11:48 AM

Deleted: ing

Bill Irion 11/2/2017 4:19 PM

Deleted:

Bill Irion 11/3/2017 11:50 AM

Deleted: , and could include some

Bill Irion 11/3/2017 4:54 PM

Deleted: , say,

Bill Irion 11/3/2017 4:55 PM

Deleted: to

Bill Irion 11/3/2017 11:41 AM

Deleted: I

Bill Irion 11/1/2017 4:54 PM

Deleted: may be

Acknowledgments

We thank Kevin Bowman, Sergio DeSouza-Machado, John Gieselman, Michael Gunson, Glynn Hulley, Susan Kulawik, Bjorn Lambrigsten, Evan Manning, Tom Pagano, Edwin Sarkissian, L. Larrabee Strow, Joao Teixeira, Geoff Toon, Tao Wang, and John Worden. We also thank two anonymous reviewers for their knowledgeable and helpful critiques. This research was primarily funded through NASA's "The Science of Terra and Aqua" grant program, and performed at the Jet Propulsion Laboratory, California Institute of Technology, under contract to the National Aeronautics and Space Administration. Copyright 2017 California Institute of Technology. U. S. Government sponsorship acknowledged.

References

- Aumann, H. H., M. T. Chahine, C. Gautier, M.D. Goldberg, E. Kalnay, L. M. McMillin, H. Revercomb, P.W. Rosenkranz, W. L. Smith, D. H. Staelin, L. L. Strow and J. Susskind: AIRS/AMSU/HSB on the Aqua mission: design, science objectives, data products, and processing systems, *IEEE Trans. Geosci. Remote Sens.*, 41, 253-264, 2003.
- Baum, B. A., Yang, P., Nasiri, S., Heidinger, A. K., Heymsfield, A., and Li, J.: Bulk scattering properties for the remote sensing of ice clouds. Part III: High-resolution spectral models from 100 to 3250 cm^{-1} , *J. Appl. Meteorol. Climatol.*, 46, 423-434, 2007.
- Blackwell, W. J.: A neural-network technique for the retrieval of atmospheric temperature and moisture profiles from high spectral resolution sounding data, *IEEE Trans. Geosci. Remote Sens.*, 43(11), 2535 – 2546, 2005.
- Blumstein, D., Chalon, G., Carlier, T., Buil, C., Hébert, Ph., Maciaszek, T., Ponce, G., Phulpin, T., Tournier, B., Siméoni, D., Astruc, P., Clauss, A., Kayal, G., and Jegou, R.: IASI instrument: Technical overview and measured performances, "Infrared Spaceborne Remote Sensing XII", (Marija Strojnik, ed.), Proceedings of SPIE Vol. 5543, SPIE, Bellingham, WA, 2004.
- Bowman, K. W., Rodgers, C. D., Kulawik, S. S., Worden, J., Sarkissian, E., Osterman, G., Steck, T., Luo, M., Eldering, A., Shephard, M., Worden, H., Lampel, M., Clough, S., Brown, P., Rinsland, C., Gunson, M., and Beer, R.: Tropospheric Emission Spectrometer: Retrieval method and error analysis, *IEEE Trans. Geosci. Remote.*, 44, 1297-1307, 2006.
- Han, Y., van Delst, P., Liu, Q., Weng, F., Yan, B., Treadon, R., and Derber J.: JCSDA Community radiative transfer model (CRTM)—Version 1, NOAA NESDIS Technical Report 122, 2005.
- Han, Y., Revercomb, H., Crompt, M., Gu, D., Johnson, D., Mooney, D., Scott, D., Strow, L., Bingham, G., Borg, L., Chen, Y., DeSlover, D., Esplin, M., Hagan, D., Jin, X., Knuteson, R., Motteler, H., Predina, J., Suwinski, L., Taylor, J., Tobin, D., Tremblay, D., Wang, C., Wang, Lihong., Wang, Likun., and Zavyalov, V.: Suomi NPP CrIS measurements, sensor data record algorithm, calibration and validation activities, and record data quality, *J. Geophys. Res. Atmos.*, 118, doi:10.1002/2013JD020344, 2013.
- DeSouza-Machado, S. G., Strow, L. L., Hannon, S. E., and Motteler, H. E., *Infrared dust spectral signatures from AIRS*, *Geophys. Res. Lett.*, 33, L03801, doi:10.1029/2005GL024364, 2006.
- DeSouza-Machado, S. G., Strow, L. L., Imbiriba, B., McCann, K., Hoff, R. M., Hannon, S. E., Martins, J. V., Tanré, D., Deuzé, J. L., Ducos, F., and Torres, O., *Infrared retrievals of dust using AIRS: Comparisons of optical depths and heights derived for a North African dust storm to other collocated EOS A-Train and surface observations*, *J. Geophys. Res.*, 115, D15201, doi:10.1029/2009JD012842, 2010.
- DeSouza-Machado, S., Strow, L. L., Tangborn, A., Huang, X., Chen, X., Liu, X., Wu, W., and Yang, Q: Single footprint retrievals for AIRS using a fast TwoSlab cloud-representation model and all-sky radiative algorithm, *Atmos. Meas. Tech. Discuss.*, <https://doi.org/10.5194/amt-2017-261>, 2017.

Bill Irion 11/1/2017 4:38 PM

Deleted: and

Bill Irion 11/3/2017 9:49 AM

Deleted: in

Bill Irion 11/28/2017 10:24 AM

Formatted: Default Paragraph Font,
Font:(Default) Times New Roman

- Haverman, S., Smith, W.L., Aoki, L.A., Rattan, T.R.: The Development of a Fast Radiative Transfer Model Based on an Empirical Orthogonal Functions (EOF) Technique, in "Multispectral, Hyperspectral, and Ultraspectral Remote Sensing Technology: Techniques and Applications". Proceedings of SPIE Vol. 6405, DOI: 10.1117/12.693995, 2006.
- Hu, Y., Rodier, S., Xu, K., Sun, W., Huang, J., Lin, B., Zhai, P., and Josset, D.: Occurrence, liquid water content, and fraction of supercooled water clouds from combined CALIOP/IIR/MODIS measurements, *J. Geophys. Res.*, 115, D00H34, doi:10.1029/2009JD012384, 2010.
- Kahn, B. H., Chahine, M. T., Stephens, G. L., Mace, G. G., Marchand, R. T., Wang, Z., Barnet, C. D., Eldering, A., Holz, R. E., Kuehn, R. E., and Vane, D. G.: Cloud type comparisons of AIRS, CloudSat and CALIPSO cloud height and amount, *Atmos. Chem. Phys.*, 8, 1231-1248, 2008.
- Kahn, B. H., Irion, F. W., Dang, V. T., Manning, E. M., Nasiri, S. L., Naud, C. M., Blaisdell, J. M., Schreier, M. M., Yue, Q., Bowman, K. W., Fetzer, E. J., Hulley, G. C., Liou, K. N., Lubin D., Ou, S. C., Susskind, J., Takano, Y., B. Tian, B., and Worden, J. R.: The Atmospheric Infrared Sounder version 6 cloud products, *Atmos. Chem. Phys.*, 14, 399-426, 2014.
- Kahn, B. H. and J. Teixeira: A Global Climatology of Temperature and Water Vapor Variance Scaling from the Atmospheric Infrared Sounder, *J. Climate*, 22, 5558-5576, 2009.
- Kahn, B. H., Schreier, M. M., Yue, Q., Fetzer, E. J., Irion, F. W., Platnick, S., Wang, C., Nasiri, S. L., and L'Ecuyer, T. S.: Pixel-scale assessment and uncertainty analysis of AIRS and MODIS ice cloud optical thickness and effective radius, *J. Geophys. Res. Atmos.*, 120, 11,669–11,689, doi:10.1002/ 2015JD023950, 2015.
- Kulawik, S. S., Worden, J., Eldering, A., Bowman, K., Gunson, M., Osterman, G. B., Zhang, L., Clough, S. A., Shephard, M. W., and Beer, R.: Implementation of cloud retrievals for Tropospheric Emission Spectrometer (TES) atmospheric retrievals: Part 1. Description and characterization of errors on trace gas retrievals, *J. Geophys. Res.*, 111, D24204, doi:10.1029/2005JD006733, 2006a.
- Kulawik, S. S., Osterman, G., Jones, D. B. A., and Bowman, K. W.: Calculation of altitude-dependent Tikhonov constraints for the TES nadir retrievals, *IEEE T. Geosci. Remote.*, 44, 1334-1342, 2006b.
- Laszlo, I., Stamnes, K., Wiscombe, W. J., and Tsay, S.-C.: The Discrete Ordinate Algorithm, DISORT for Radiative Transfer, in "Light Scattering Reviews, Vol. 11" (A. Kokhanovsky, ed.), Springer-Verlag, Berlin, 2016.
- Liu, X., W., Smith, L., Zhou, D. K., and Larar, A.: A principal component-based radiative transfer forward model (PCRTM) for hyperspectral instruments, *Proc. SPIE Int. Soc. Opt. Eng.*, 5666, 96-105, 2005.
- Liu, X., Zhou, D. K., Larar, A. M., Smith, W. L., Schluessel, P., Newman, S. M., Taylor, J. P., and Wu, W.: Retrieval of atmospheric profiles and cloud properties from IASI spectra using super-channels, *Atmos. Chem. Phys.*, 9, 9121-9142, 2009.
- Maddy, E. S. and Barnet, C. D., [Vertical Resolution Estimates in Version 5 of AIRS Operational Retrievals, IEEE Trans. Geosci. Remote Sens.](#), 46, 2375-2384, 2008.
- Maddy, E. S., DeSouza-Machado, S. G., Nalli, N. R., Barnet, C. D., Strow, L. L., Wolf, W. W., Xie, H., Gambacorta, A., King, T. S., Joseph, E., Morris, V., Hannon, S. E., and Schou, P., [On the effect of dust aerosols on AIRS and IASI operational level 2 products, Geophys. Res. Lett.](#), 39, L10809, doi:10.1029/2012GL052070, 2012.
- McPeters, R. D., Labow, G. J., and Logan, J. A.: Ozone climatological profiles for satellite retrieval algorithms, *J. Geophys. Res.*, 112, D05308, doi:10.1029/2005JD006823, 2007.
- Mishchenko, M. I., Travis, L. D., and Lacis, A. A.: "Scattering, Absorption, and Emission of Light by Small Particles", Cambridge University Press, Cambridge, 2002.
- Moncet, J.-L., Uymin, G., Liang, P., and Lipton, A. E.: Fast and accurate radiative transfer in the thermal regime by simultaneous optimal spectral sampling over all channels, *J. Atmos. Sci.*, 72, 2622-2641, 2015.

- Moré, J. J.: The Levenberg-Marquardt algorithm: implementation and theory, in: Numerical analysis (Proc. 7th Biennial Conf., Univ. Dundee, Dundee, 1977), Lecture Notes in Math., Vol. 630, Springer, Berlin, 105–116, 1978.
- Nakajima, T., and King, M. D.: Determination of the optical thickness and effective particle radius of clouds from reflected solar radiation measurements - Part I: Theory, *J. Atmos. Sci.*, 47(15), 1878-1893, 1990.
- 5 Nakajima, T., King, M. D., Spinhirne, J. D., & Radke, L. F.: Determination of the optical thickness and effective particle radius of clouds from reflected solar radiation measurements - Part II: Marine stratocumulus observations, *J. Atmos. Sci.*, 48(5), 728-751, 1991.
- Ou, S. S. C., Kahn, B. H., Liou, K.-N., Takano, Y., Schreier, M. M., and Yue, Q.: Retrieval of cirrus cloud properties from the Atmospheric Infrared Sounder: The k-coefficient approach using cloud-cleared radiances as input, *IEEE T. Geosci. Remote.*, 51,
- 10 1010-1024, 2013.
- [Pagano, T., "Estimation of AIRS correlated noise," AIRS Design File Memo ADFM-614, AIRS Project Office, Jet Propulsion Laboratory, Pasadena CA, 2002.](#)
- [Pagano, T. S., Aumann, H. H., Hagan, D. E., and Overoye, K.: Prelaunch and in-flight radiometric calibration of the Atmospheric Infrared Sounder \(AIRS\), *IEEE T. Geosci. Remote.*, 41, 265-273, 2003.](#)
- 15 Pagano, T. S., Aumann, H. H., Manning, E. M., Elliott, D. A., and Broberg, S. E.: Improving AIRS radiance spectra in high contrast scenes using MODIS, *Proc. SPIE 9607, Earth Observing Systems XX*, doi:10.1117/12.2188311, 2015.
- Platnick, S., King, M. D., Ackerman, S. A., Menzel, W. P., Baum, B. A., Riédi, J. C., and Frey, R. A.: The MODIS cloud products: Algorithms and examples From Terra, *IEEE T. Geosci. Remote Sens.*, 41, 459 – 473, 2003.
- Platnick, S., Meyer, K. G., King, M. D., Wind, G., Amarasinghe, N., Marchant, B., Arnold, G. T., Zhang, Z., Hubanks, P. A.,
- 20 Holz, R. E., Yang, P., Ridgway, W. L., and Riedi, J.: The MODIS Cloud Optical and Microphysical Products: Collection 6 Updates and Examples From Terra and Aqua, *IEEE T. Geosci. Remote Sens.*, 55, 502 – 525, 2017.
- Pope, A., Rees, W. G., Fox, A. J., and Fleming, A.: Open access data in polar and cryospheric remote sensing, *Remote Sens.*, 6, 6183-6220, 2014.
- Rodgers, C. D.: *Inverse Methods for Atmospheric Sounding: Theory and Practice*, World Scientific Publishing, Singapore, 2000.
- 25 Sarkissian, E.: *The Levenberg–Marquardt algorithm for solving the nonlinear least squares problem: Theory, implementation and application*, M.S. thesis, California State University, Los Angeles, 2001.
- Saunders, R., Hocking, J., Rundel, D., Rayer, P., Matricardi, M., Geer, A., Lupu, C., Brunel, P., and Vidot, J.: RTTOV-11 Science and Validation Report, EUMETSAT Satellite Application Facility Document NWPSAF-MO-TV-032, 2013.
- Schreier, M. M., Kahn, B. H., Eldering, A., Elliott, D. A., Fishbein, E., Irion, F. W., and Pagano, T. S.: Radiance comparisons of
- 30 MODIS and AIRS using spatial response information, *J. Atmos. Ocean. Tech.*, 27, doi: 10.1175/2010JTECHA1424.1 , 2010.
- Spurr, R. J. D.: VLIDORT: A linearized pseudo-spherical vector discrete ordinate radiative transfer code for forward model and retrieval studies in multilayer multiple scattering media, *J. Quant. Spec. Rad. Trans.*, 102, 316-342, 2006.
- Strow, L. L., Hannon, S. E., De Souza-Machado, S., Motteler, H. E. and Tobin, D.: An Overview of the AIRS Radiative Transfer Model, *IEEE T. Geosci. Remote.*, 41, 303-313, 2003.
- 35 Strow, L. L., Hannon, S. E., De Souza-Machado, S., Motteler, H. E. and Tobin, D. C.: Validation of the Atmospheric Infrared Sounder radiative transfer algorithm, *J. Geophys. Res.*, 111, D09S06, doi: 10.1029/2005JD006146, 2006.
- Susskind, J., Barnet, C. D., and Blaisdell, J. M.: Retrieval of Atmospheric and Surface Parameters From AIRS/AMSU/HSB Data in the Presence of Clouds, *IEEE T. Geosci. Remote.*, 41, 390-409, 2003.
- Susskind, J., Blaisdell, J. M., Iredell, L., and Keita, F.: Improved temperature sounding and quality control methodology using
- 40 AIRS/AMSU data: The AIRS Science Team Version 5 Retrieval Algorithm, *IEEE T. Geosci. Remote.*, 49, 883-907, 2011.

- Susskind, J., Blaisdell, J. M., Iredell, L.: Improved methodology for surface and atmospheric soundings, error estimates, and quality control procedures: the Atmospheric Infrared Sounder Science Team Version-6 Retrieval Algorithm, *J. Appl. Remote Sens.*, doi: 10.1117/1.JRS.8.084994, 2014.
- 5 Tobin, D. C., Antonelli, P., Rivercomb, H. E., Dutcher, S., Turner, D. D., Taylor, J. K., Knuteson, R. O., and Vinson, K., *Hyperspectral data noise characterization using principle component analysis: application to the Atmospheric Infrared Sounder*, *J. Appl. Remote Sens.*, 1, 013515, doi: 10.1117/1.2757707, 2007.
- van Delst, P.: JCSDA infrared sea surface emissivity model, in *Proceedings of the 13th International TOVS study conference*, Sainte-Adèle, Québec, Canada, 2003.
- 10 Wagner, W., and Pruß, A.: The IAPWS Formulation 1995 for the Thermodynamic Properties of Ordinary Water Substance for General and Scientific Use, *J. Phys. Chem. Ref. Data*, 31, 387-535, 2002.
- Wang, T., Fetzner, E. J., Wong, S., Kahn, B. H., and Yue, Q.: Validation of MODIS cloud mask and multilayer flag using CloudSat-CALIPSO cloud profiles and a cross-reference of their cloud classifications, *J. Geophys. Res. Atmos.*, 131, 11620 – 11635, 2016.
- 15 Weiler, M. H., Overoye, K. R., Stobie, J. A., O’Sullivan, P. B., Gaiser, S. L., Broberg, S. E., and Elliot, D. A.: Performance of the Atmospheric Infrared Sounder (AIRS) in the radiation environment of low-Earth orbit, in “Earth Observing Systems X” (J. J. Butler, ed.), *Proceedings of SPIE* 5882, 588210, doi:10.1117/12.615244, 2005.
- Wunch, D., Toon, G. C., Blavier, J.-F. L., Washenfelder, R. A., Notholt, J., Connor, B. J., Griffith, D. W. T., Sherlock, V., and Wennberg, P. O.: The Total Carbon Column Observing Network, *Phil. Trans. R. Soc. A*, 369, 2087–2112, 2011.

Bill Irion 11/30/2017 11:42 AM

Deleted:

Bill Irion 11/3/2017 9:47 AM

Deleted: I

Bill Irion 11/3/2017 9:47 AM

Formatted: Font:Not Italic

Constituent	Covariance along diagonal	Covariance off diagonal length scale (km)
Temperature profile	$(2K)^2$	0.5
H ₂ O	$[\log(1.4)]^2$ from ground to 100mb then gradually reduced to $[\log(1.01)]^2$ at 50 mb and above	0.5
Surface temperature	$(2K)^2$	N/A
O ₃	$[\log(1.1)]^2$ from ground to 100 mb then gradually increasing to $[\log(1.2)]^2$ at 50 mb and above.	3.0
CO ₂	$[\log(1.02)]^2$	3.5
Cloud optical depth (t)	$[\log(2.)]^2$	N/A
Cloud-top temperature	(4K) ² if cloud-top temperature can be calculated from MODIS (25K) ² if cloud-top temperature cannot be calculated from MODIS, but MODIS data indicate thin cirrus	N/A
Cloud particle size	$[\log(2.)]^2$	N/A

Table 1: A priori covariances used for retrievals.

Table 2: Retrieval Channels (cm ⁻¹)							
662.02	678.57	700.77	718.87	752.09	820.84	1384.47	1513.83
664.51	681.46	701.05	719.17	753.38	839.92	1389.39	1519.07
666.26	681.72	702.74	719.46	753.70	847.14	1392.15	1521.05
666.77	689.49	703.87	719.76	755.00	849.57	1397.13	1524.35
667.27	689.76	704.43	720.94	755.32	880.40	1407.77	1541.77
667.78	691.12	706.13	721.54	758.26	917.30	1419.15	1544.48
668.28	691.39	706.99	721.83	768.88	937.90	1427.22	1547.20
668.54	692.75	707.84	723.03	769.89	948.18	1432.47	1551.30
668.79	693.02	708.70	723.32	773.28	979.13	1436.57	1554.04
669.04	694.12	709.56	724.52	776.36	1121.00	1441.88	1556.10
669.55	694.40	711.00	726.32	778.08	1134.46	1462.09	1560.24
669.81	694.67	711.29	732.61	779.11	1218.49	1468.82	1563.02
670.06	695.77	712.74	734.15	790.33	1225.13	1471.91	1572.09
670.57	696.05	714.19	738.48	793.89	1310.18	1474.38	1586.26
672.10	697.43	714.48	740.03	795.68	1315.47	1479.36	1598.50
673.64	697.71	715.94	742.85	798.92	1340.19	1483.74	1605.05
675.19	698.82	717.40	746.01	801.10	1367.25	1493.21	
676.75	699.10	717.99	747.60	803.65	1376.88	1498.96	
677.01	699.38	718.28	749.20	804.75	1379.58	1500.88	
678.31	699.66	718.58	750.48	811.79	1381.21	1502.16	

Table 2: AIRS retrieval channel frequencies used for this study.

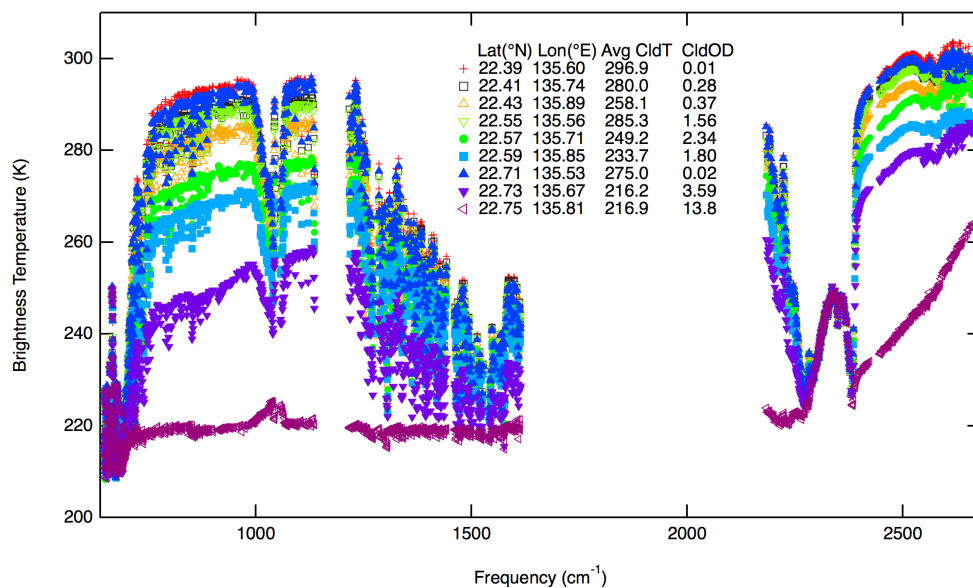


Figure 1: AIRS Level 1b brightness temperature observations of adjacent cloudy spectra. Data are from daytime Granule 44, Sept. 6, 2002. Average cloud-top temperatures and cloud optical depths are estimated from coincident MODIS L2 retrievals, averaged on the AIRS spatial response function (see Sect. 3.2.2 in text.)

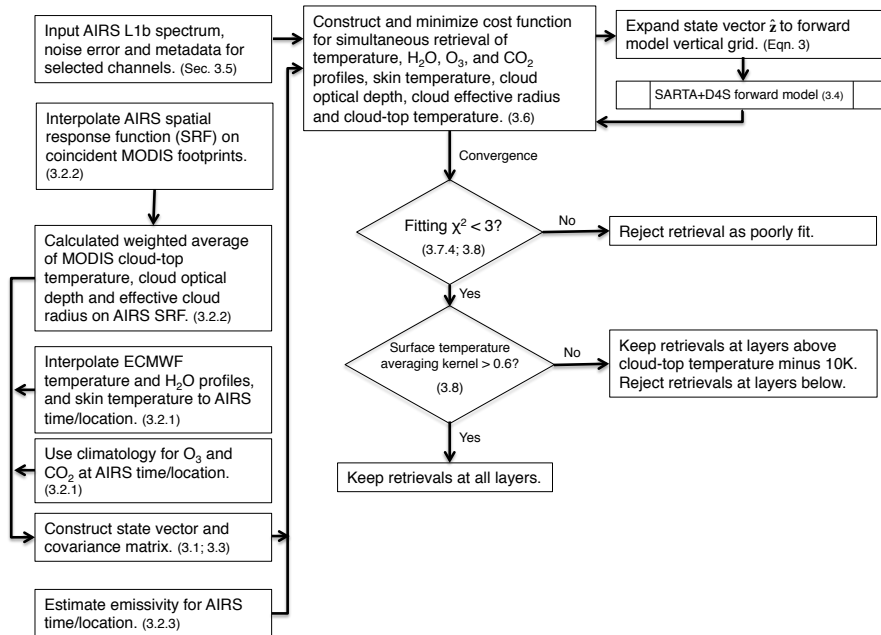


Figure 2: Simplified block diagram of AIRS-OE retrieval algorithm for cloudy scenes. Blocks are annotated with section numbers from this paper for further information.

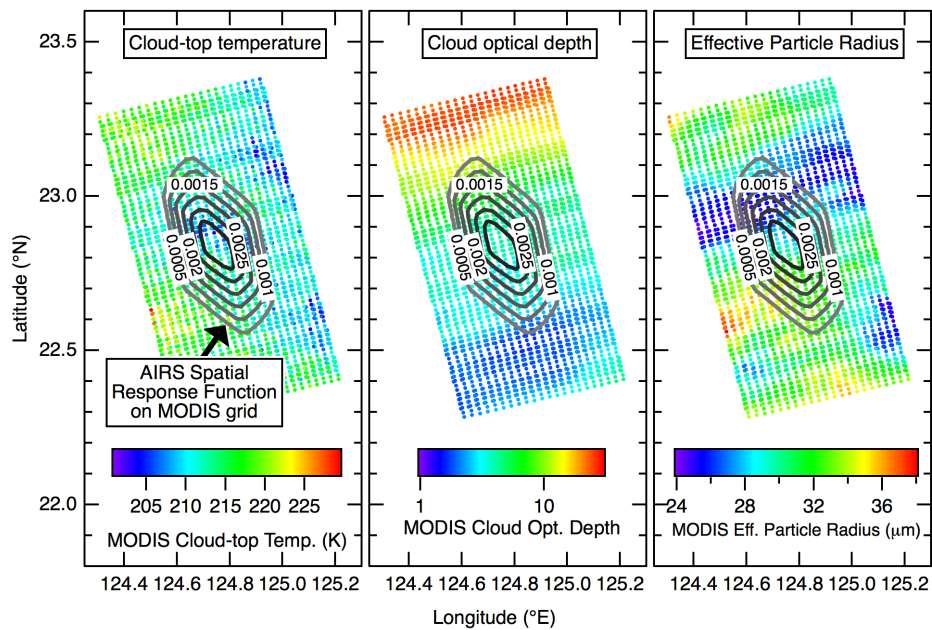


Figure 3: Sample MODIS fields of cloud-top temperature, cloud optical depth and effective particle size overlaid with the AIRS Spatial Response Function (SpatialRF) interpolated to the MODIS grid. Data are daytime observations over ocean from September 6, 2002. For this example, the weighted averages over the AIRS SpatialRF are 211.3 K for cloud-top temperature, 4.26 for optical depth, and 29.5 μm for effective particle radius.

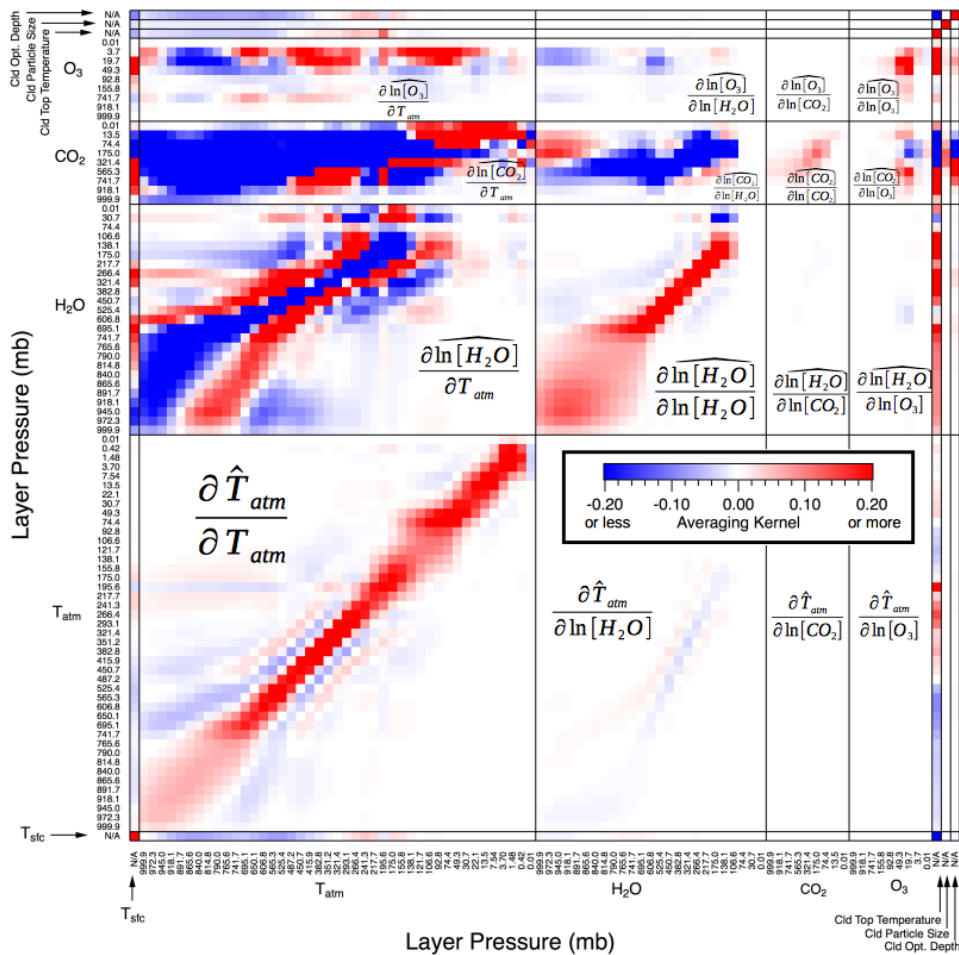


Figure 4: Sample averaging kernel from simultaneous retrieval. A row of the averaging kernel matrix is a measure of the sensitivity of the retrieved value to changes in the “true” value of itself and other parameters, shown in the columns, assuming the retrieval is in a near-linear regime. A column indicates the sensitivity of the retrieved state vector to a change in the true value of a single retrieval parameter. The color scale has been limited to better show the weaker sensitivities.

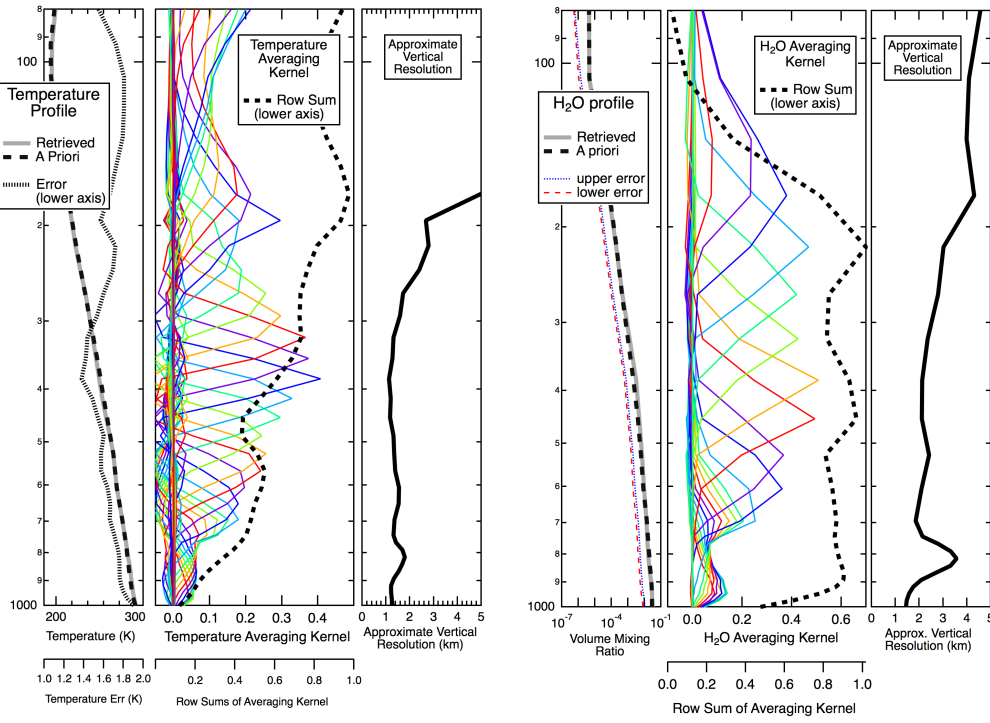
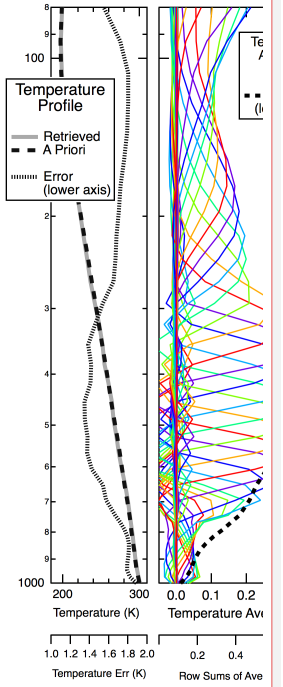


Figure 5: Sample retrieval profiles, errors, averaging kernels, row sums of the averaging kernels, and approximate vertical resolutions for temperature (left panels) and water vapor volume mixing ratio (right panels). Each colored line in the averaging kernel panels is from a partial row of the averaging kernel (e.g., the rows of $\partial \hat{T}_{atm} / \partial T_{atm}$ and $\partial \ln[H_2O] / \partial \ln[H_2O]$, as seen in Fig. 4.)

Bill Irion 11/28/2017 9:52 AM



Deleted:

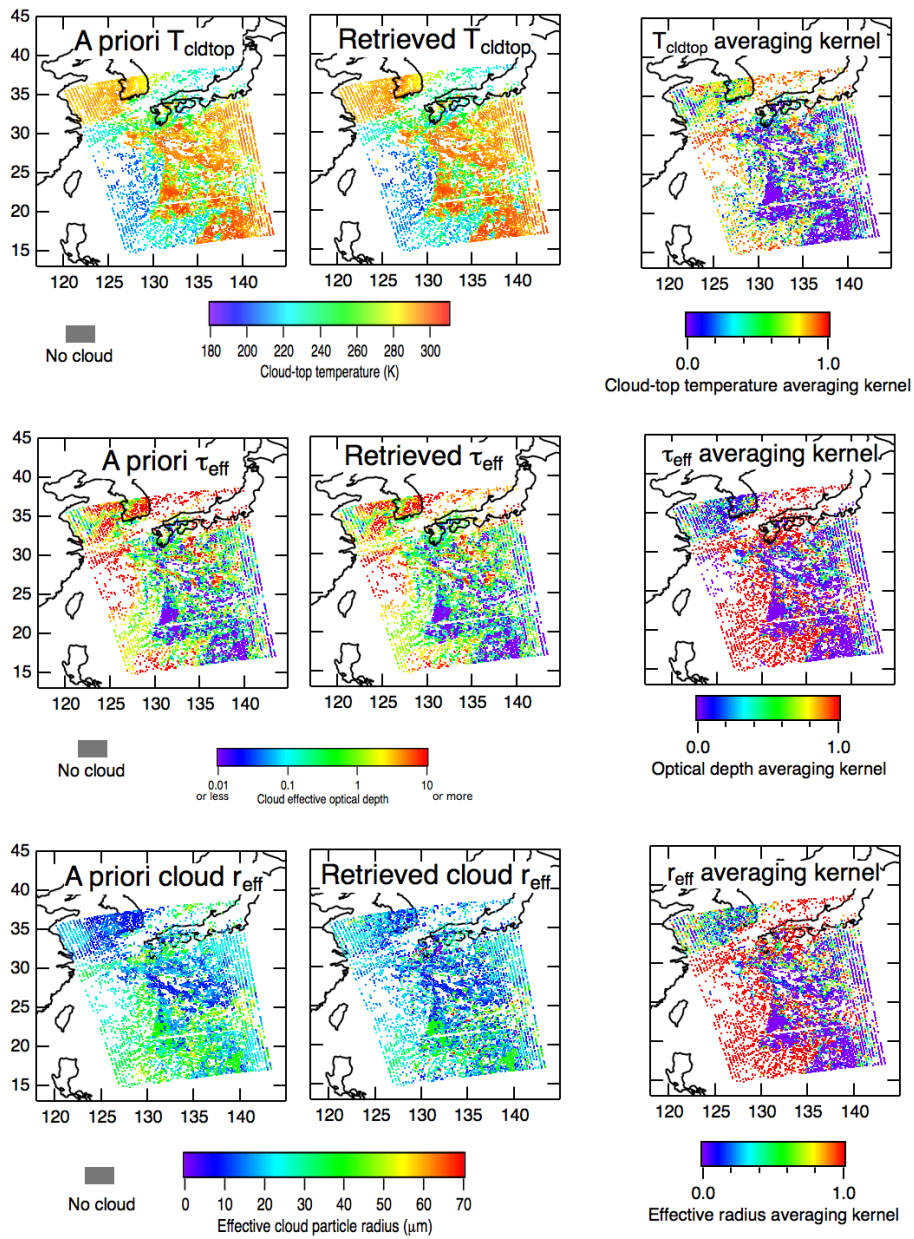


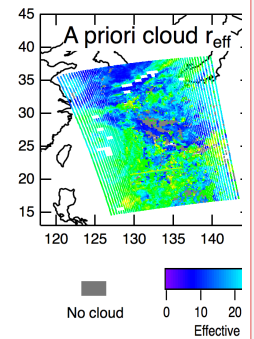
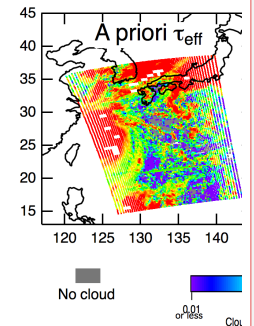
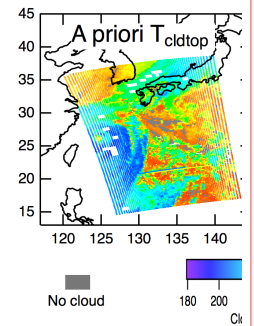
Figure 6: Sample a priori, AIRS-OE retrievals and AIRS-OE averaging kernels of cloud-top temperature (T_{cldtop}), effective optical depth (τ_{eff}) and effective particle radius (r_{eff}). Data are from AIRS (daytime) Granule 44, September 6, 2002.

Formatted: Font:(Default) Arial

Bill Irion 11/20/2017 4:21 PM

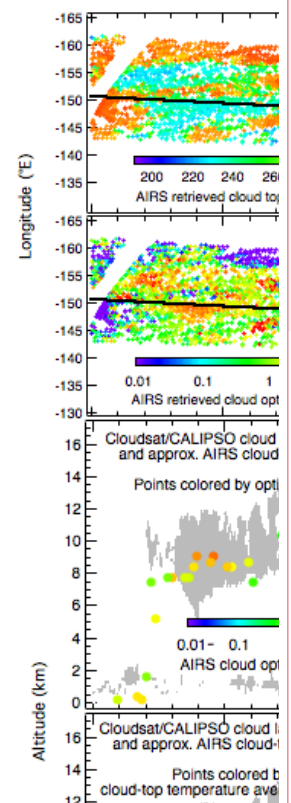
Formatted: Centered

Bill Irion 11/20/2017 3:56 PM



Deleted:

Bill Irion 11/22/2017 3:22 PM



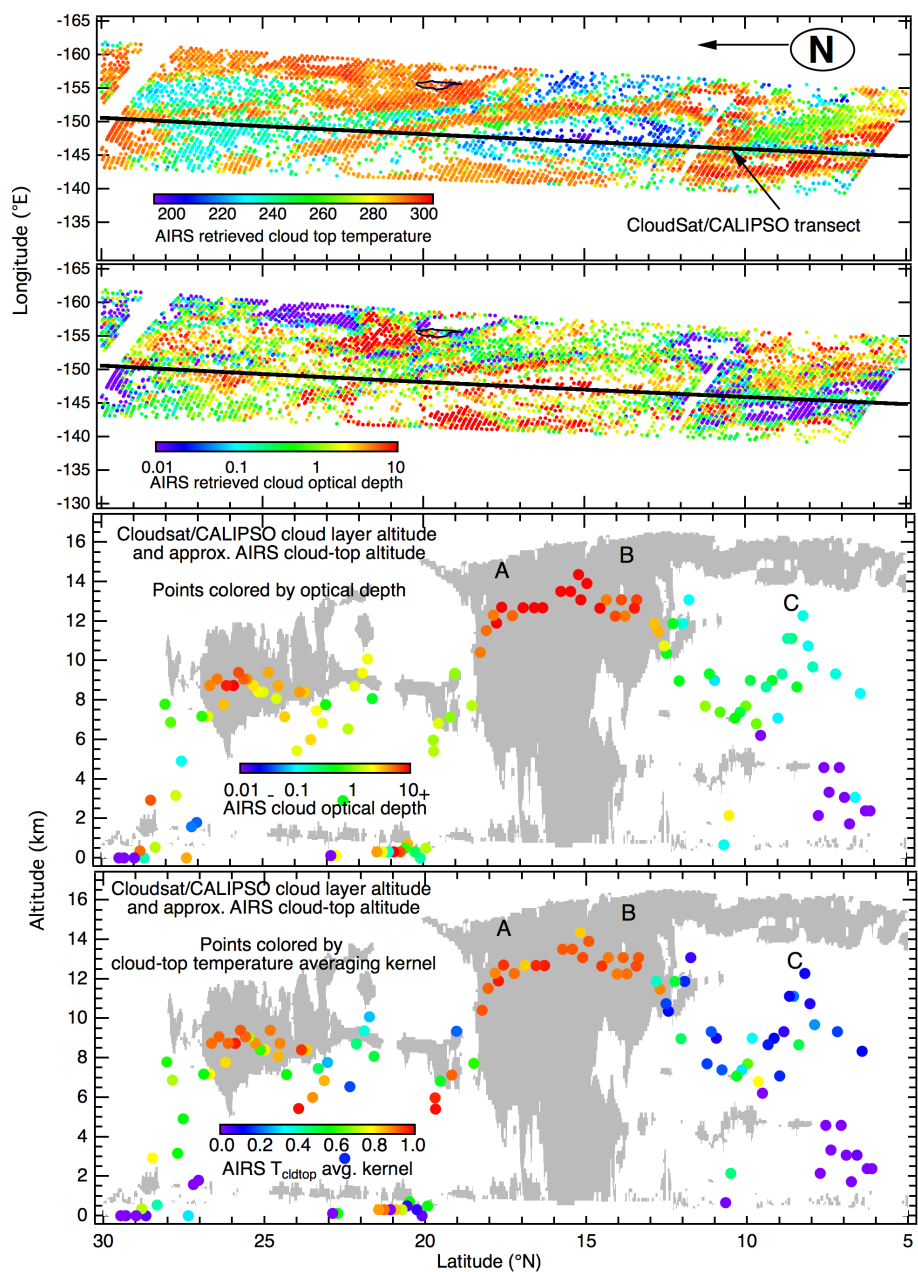


Figure 7: Comparison of AIRS-OE approximate cloud-top altitude with CloudSat/CALIPSO (CsC). Top panel: AIRS-OE cloud-top temperature with CsC transect. Second panel: AIRS-OE cloud optical depth. Third panel: CsC cloud layer altitudes (grey) with approximate AIRS-OE cloud-top altitudes, colored by retrieved optical depth. Bottom panel: Same as third panel, but points colored by cloud-top temperature averaging kernels. Data are from daytime observations, July 31, 2009 over the Pacific ocean.

Unknown

Formatted: Font:9 pt, Bold

Bill Irion 6/16/2017 1:24 PM

Formatted: Font:Bold

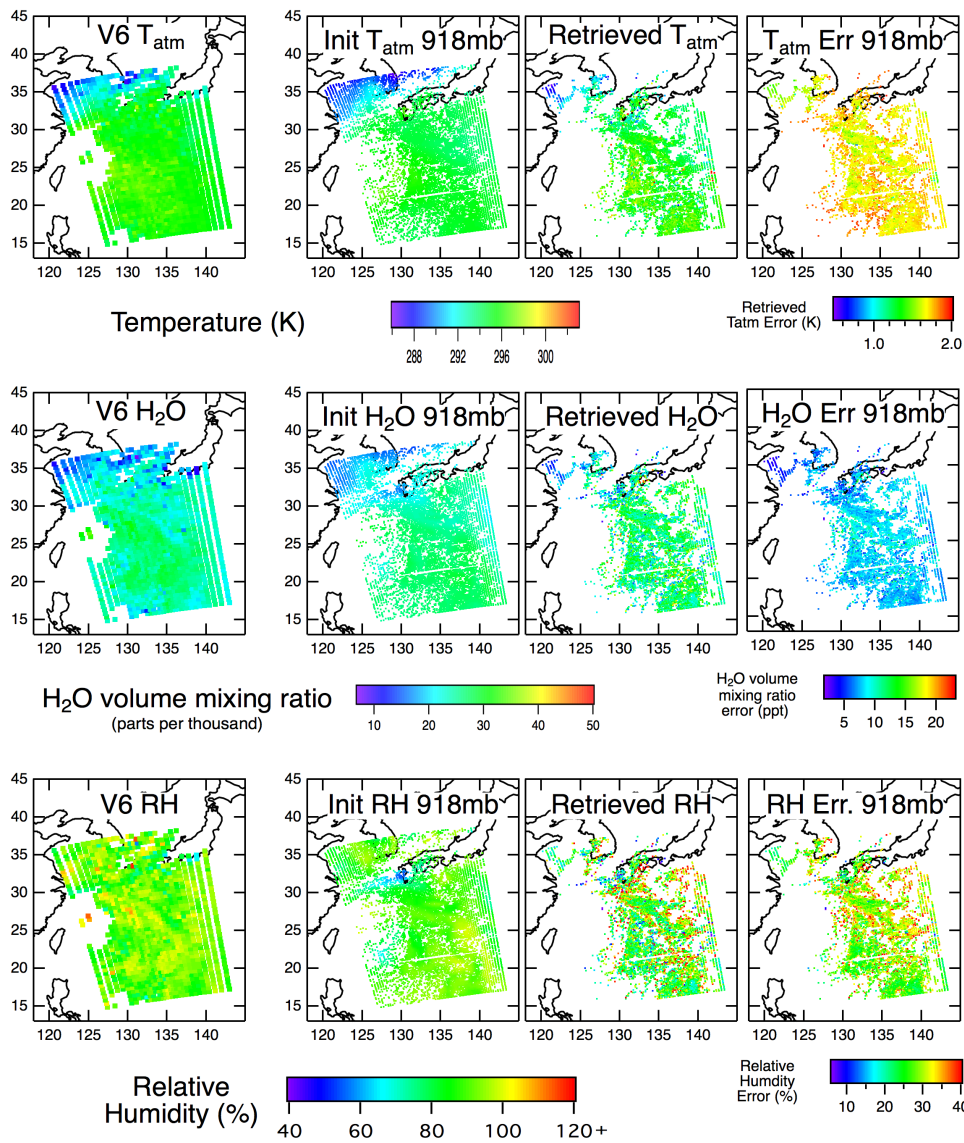
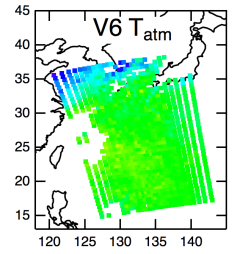
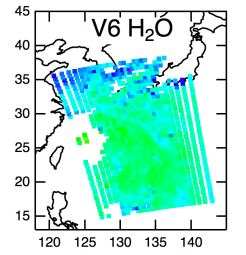


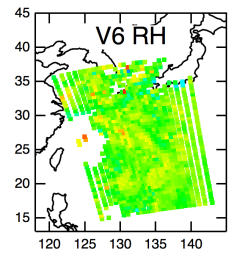
Figure 8: AIRS V6 retrieval, and AIRS-OE a priori, retrievals and errors for temperature, water vapor and relative humidity (RH) at 918 mb for (daytime) Granule 44, September 6, 2002.



Temperature



H₂O volume mixing ratio (p



Relative Humidity (%)

Deleted:

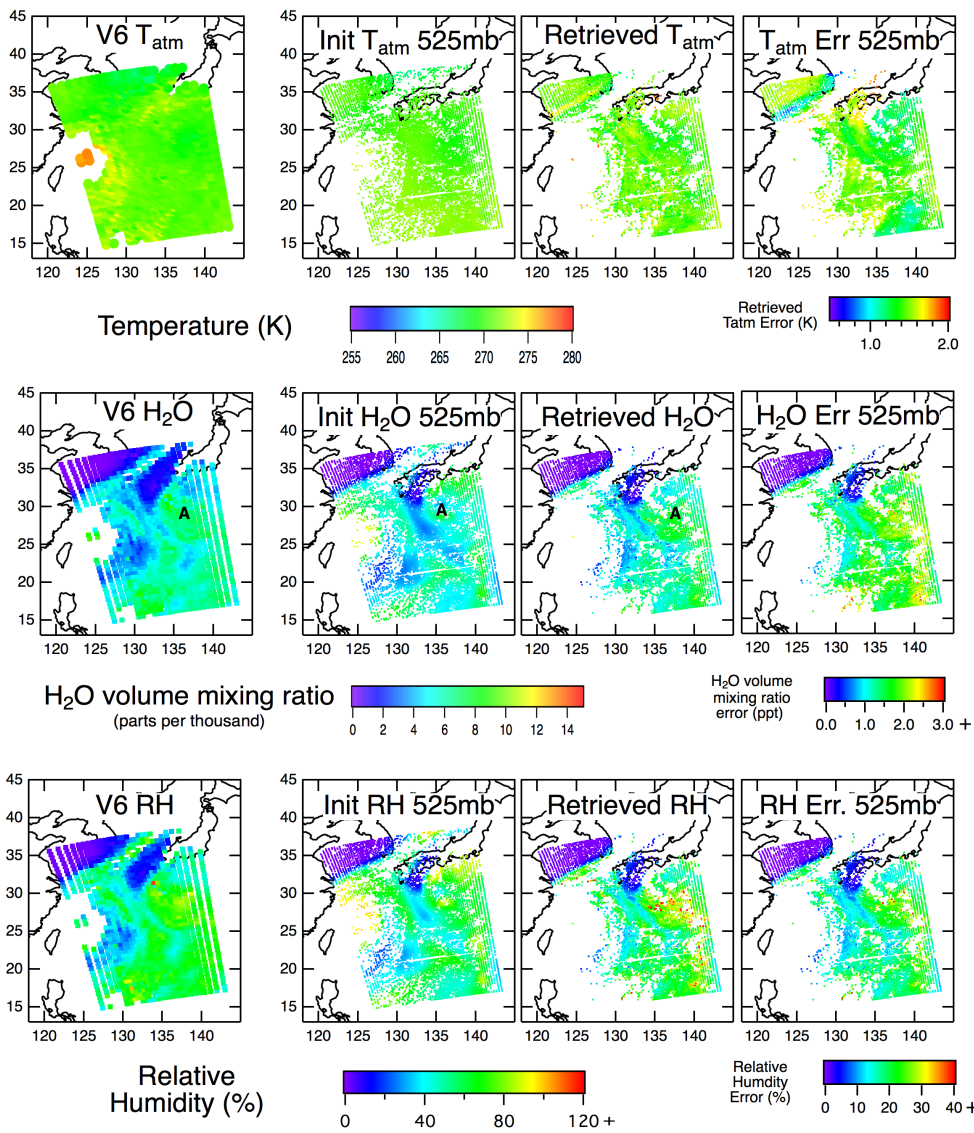
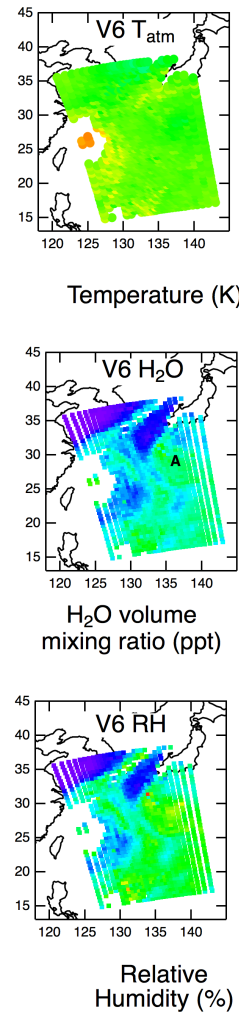


Figure 9: AIRS V6 retrieval, and AIRS-OE a priori, retrievals and estimated errors for temperature, water vapor and relative humidity (RH) at 525 mb for (daytime) Granule 44, September 6, 2002.

Bill Irion 11/20/2017 4:09 PM



Deleted:

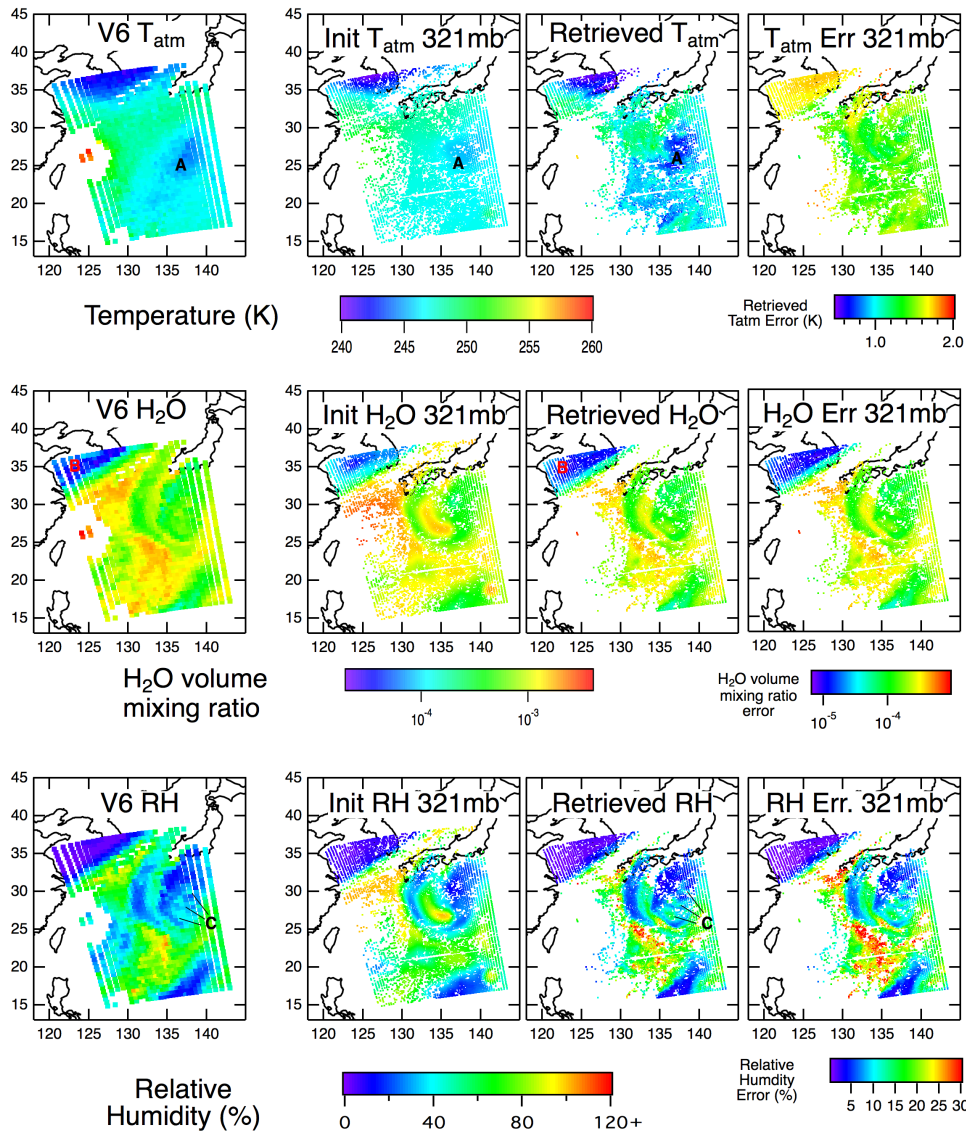
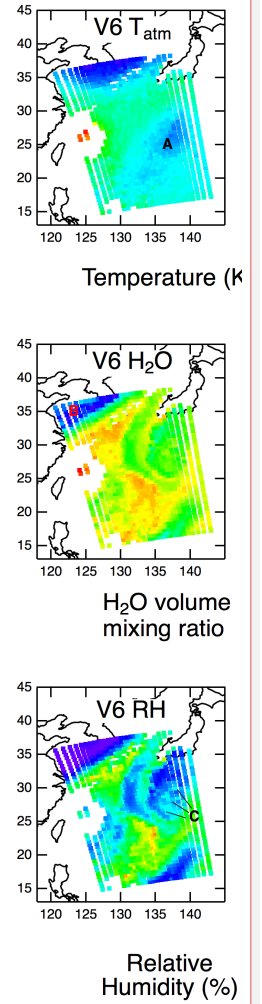


Figure 10: AIRS V6 retrieval, and AIRS-OE a priori, retrievals and errors for temperature, water vapor and relative humidity (RH) at 321 mb for (daytime) Granule 44, September 6, 2002. Note that unlike Figures 8 and 9, water vapor mixing ratio is on a logarithmic scale.



Deleted:

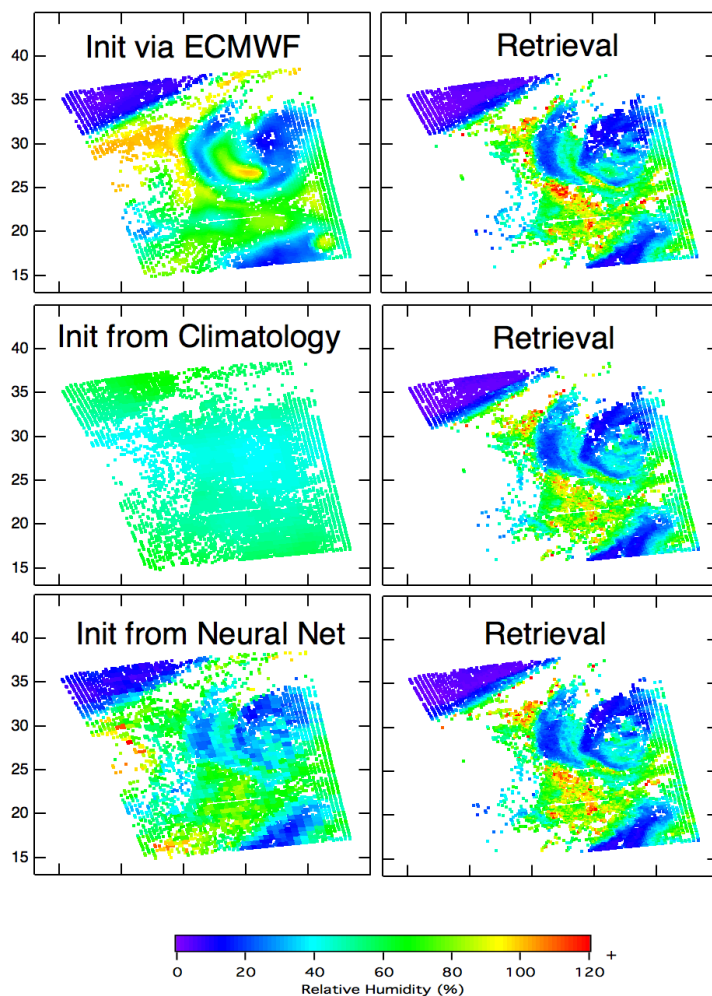
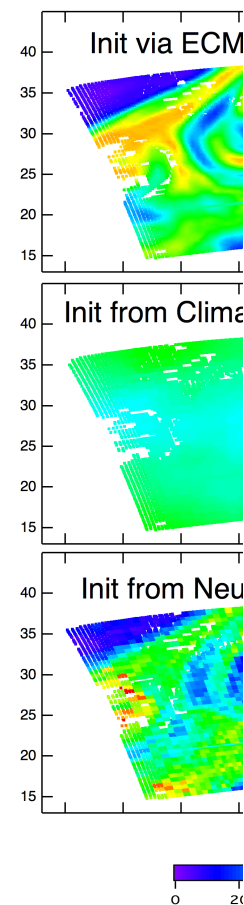


Figure 11: AIRS-OE relative humidity (calculated from retrieved temperature and water vapor) at 318 mb using different a priori. The left panels show the relative humidity calculated from the a priori, while the right panels show the retrieval. The top row uses an ECMWF analysis-derived a priori linearly interpolated in time, space and log pressure to the AIRS observation. The second row uses a climatology. The third row uses the neural-net calculation (on the AIRS-AMSU footprint) that is used with the operational AIRS V6 retrieval. Note that while the different a priori were used for temperature, skin temperature and water vapor, the same MODIS-derived cloud data (cloud-top temperature, cloud optical depth and cloud particle radius) were used as a priori for the cloud retrievals.

Bill Irion 11/20/2017 4:14 PM

Formatted: Centered

Bill Irion 11/20/2017 4:14 PM



Deleted:

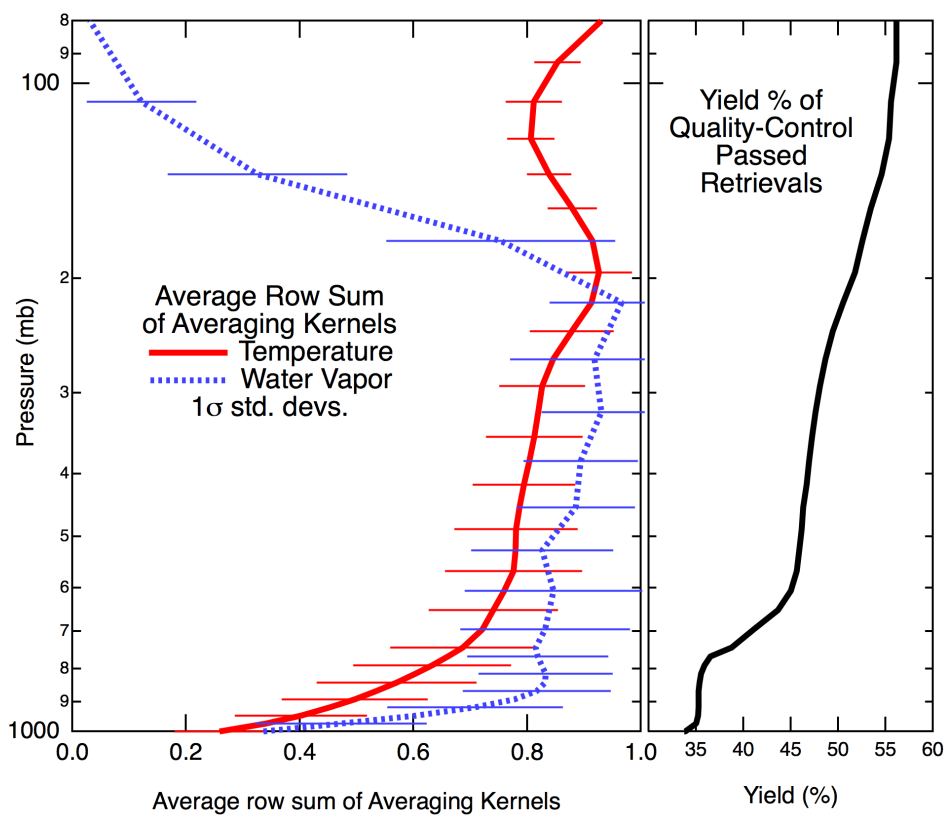


Figure 12: Average row sums of temperature and water vapor averaging kernels (left panel) and percentage yield of quality control-passed retrievals (right panel) for (daytime) Granule 44, September 6, 2002. A priori for temperature and water vapor were from ECMWF. Error bars are 1 σ standard deviations. For clarity, some error bars are not shown.

Bill Irion 11/22/2017 12:02 PM

Formatted: Font:Symbol

Bill Irion 11/20/2017 4:16 PM

Formatted: Justified, Line spacing: 1.5

Bill Irion 11/20/2017 4:16 PM

Formatted: Font:Helvetica, 10 pt, Not Bold

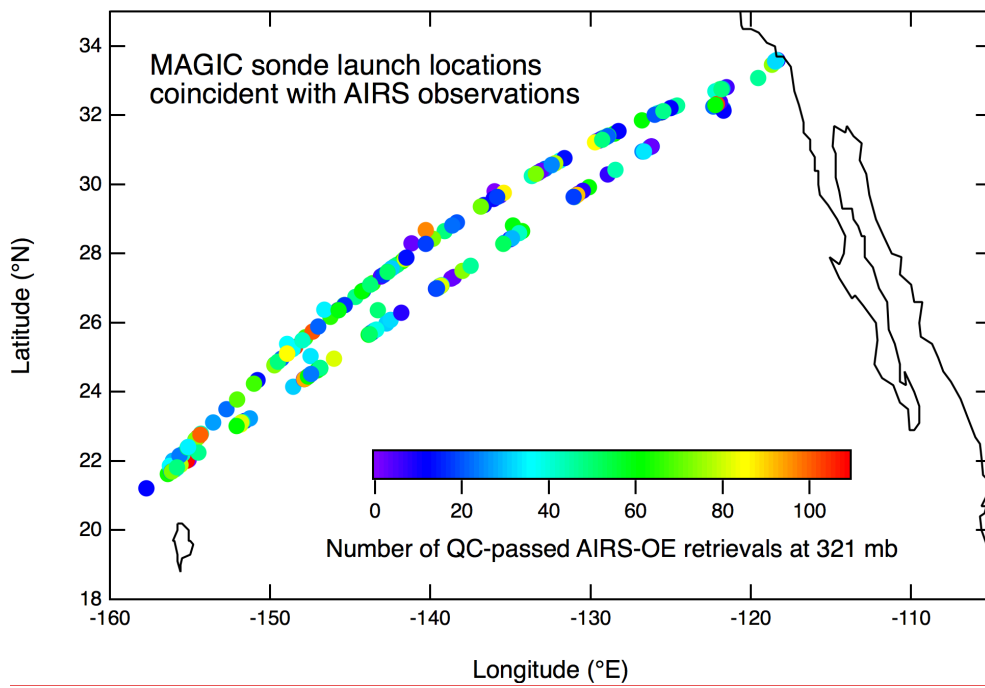
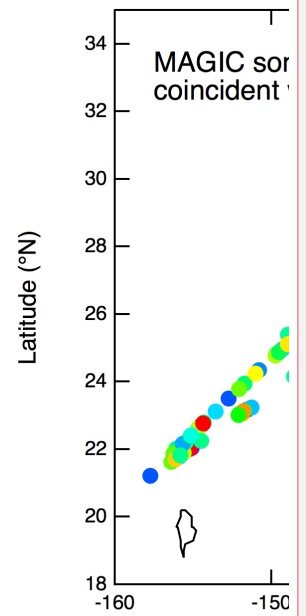


Figure 13: MAGIC sonde launch locations that were matched to coincident AIRS observations. Points are colored by the number of QC-passed AIRS-OE retrievals of water vapor at 321 mb. AIRS observations were within 3 hours and 100 km of sonde launch.

Bill Irion 11/21/2017 4:23 PM



Deleted:

Bill Irion 11/21/2017 4:30 PM

Deleted: 2

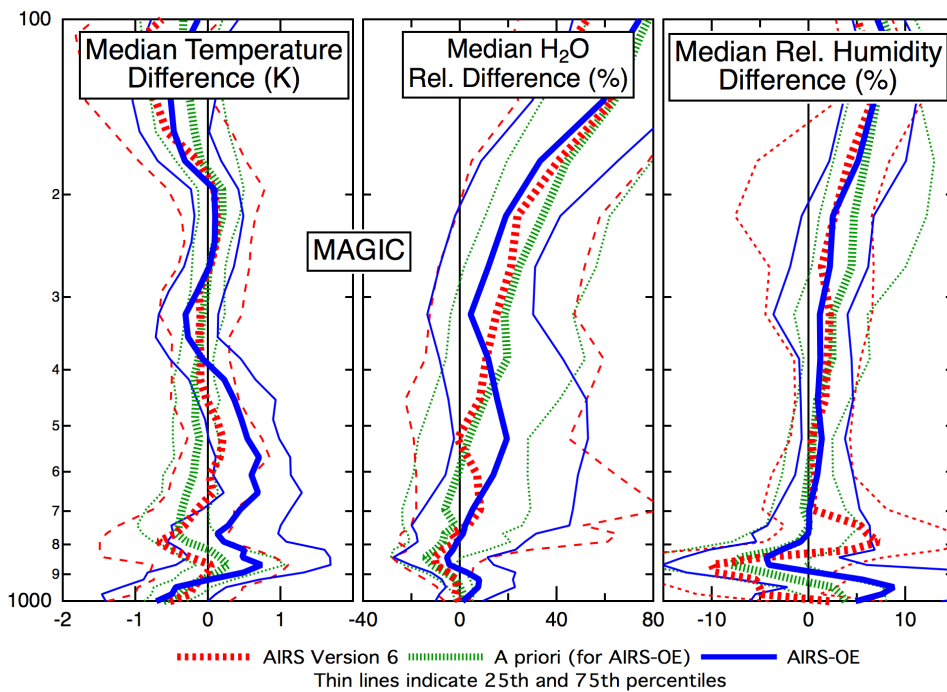
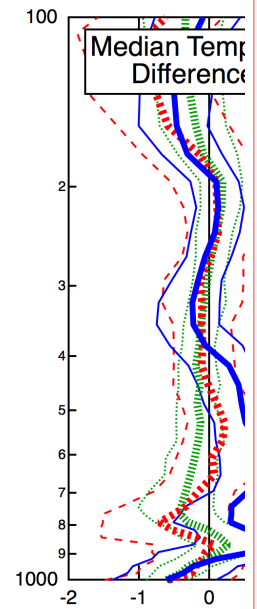


Figure 14: AIRS-OE, AIRS-Version 6 and a priori profile biases from MAGIC radiosondes. Left panel: Median temperature difference (minus sonde). Middle panel: median relative difference in water vapor ($[\text{AIRS} - \text{sonde}] / \text{sonde}$ in %). Right panel: Median difference in relative humidity (in %). Thin lines represent 25th and 75th percentiles. AIRS observations were within 3 hours and 100 km of sonde launch, and only those retrieval layers passing quality control were counted. In total, 8633 AIRS profiles were matched to 210 sonde profiles. See Sec. 5.1 for description of data aggregation before calculation of medians.



Deleted:

Bill Irion 11/21/2017 4:31 PM

Deleted: 3

Bill Irion 11/14/2017 4:29 PM

Deleted: 7879

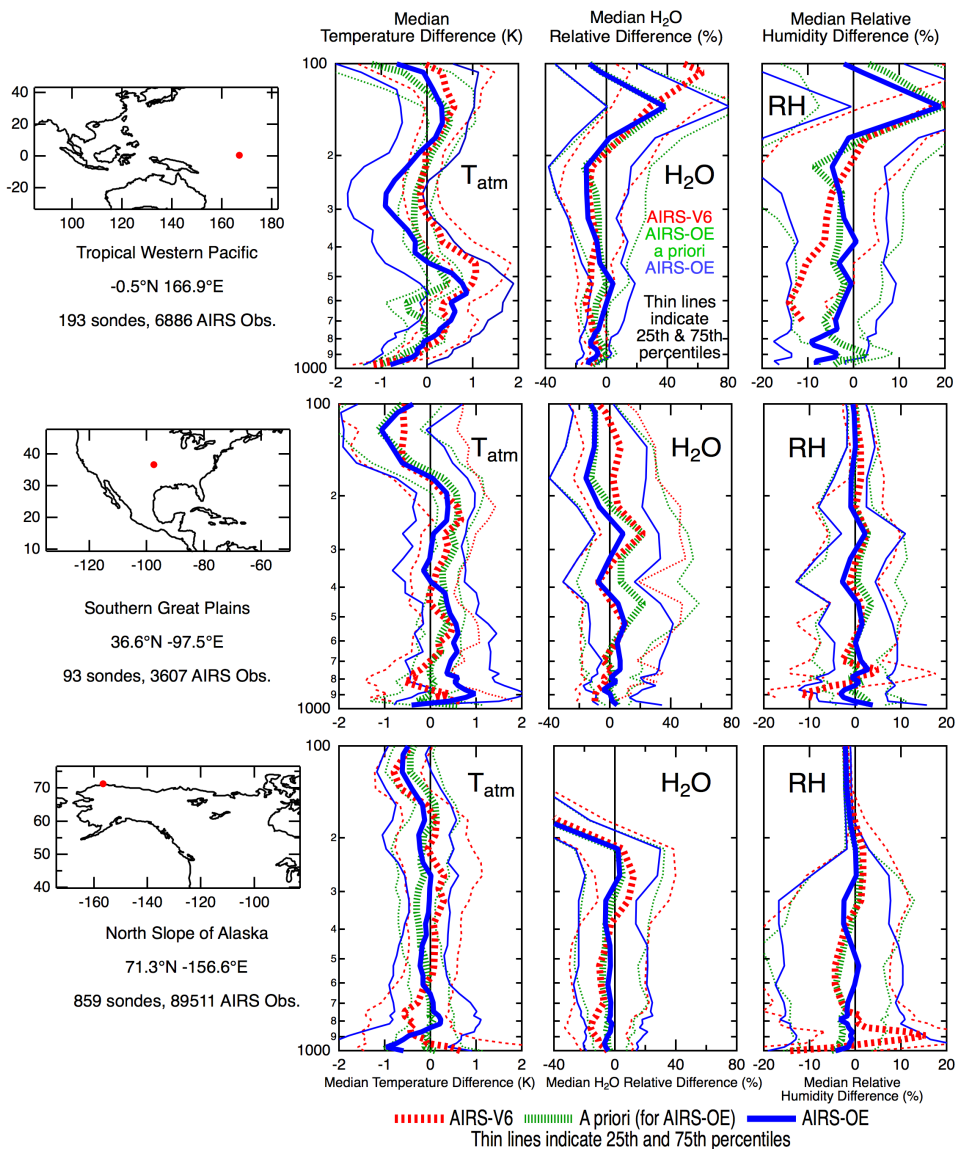
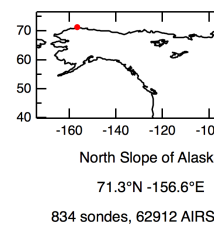
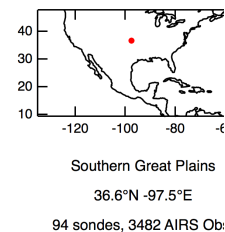
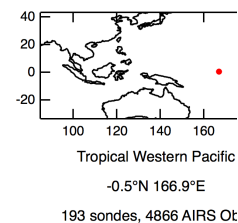


Figure 15: AIRS-OE, AIRS-Version 6 and (AIRS-OE) a priori profile differences from radiosondes launched from the Tropical Western Pacific site (top row), Southern Great Plains (middle row), and North Slope of Alaska (bottom row). Left column: Median temperature differences (minus sonde). Middle column: median relative difference in water vapor ($[\text{AIRS} - \text{sonde}] / \text{sonde}$ in %). Right column: median difference in relative humidity (in %). Thin lines represent 25th and 75th percentiles. AIRS observations were within 3 hours and 100 km of sonde launch and only those retrieved layers passing quality control were counted. The a priori for AIRS-V6 is not shown. See Sec. 5.1 for description of data aggregation before calculation of medians.

Bill Irion 11/22/2017 11:59 AM



Deleted:

Bill Irion 11/22/2017 12:01 PM

Deleted: 4