

Author's Response: amt-2017-229 originally submitted on 07 Jul 2017

Title: Drift corrected Odin-OSIRIS ozone product: algorithm and updated stratospheric ozone trends

Authors: A. Bourassa, C. Roth, D. Zawada, L. Rieger, C. McLinden, D. Degenstein

November 2, 2017

Dear Dr. Godin-Beekmann,

Thank you for continuing the review process of our paper. We believe we have responded satisfactorily to all referee comments in the discussion phase and have revised the manuscript accordingly. You will find below the full response to both reviewers as well as a copy of the manuscript with changes marked in red.

If these corrections do not address your concerns, or should you find anything else requiring attention, please let us know.

Best wishes,

Adam Bourassa and co-authors

Author's Response: amt-2017-229 originally submitted on 07 Jul 2017

Title: Drift corrected Odin-OSIRIS ozone product: algorithm and updated stratospheric ozone trends

Authors: A. Bourassa, C. Roth, D. Zawada, L. Rieger, C. McLinden, D. Degenstein

Thank you to both referees for the helpful reviews. The referee comments are provided below, with [our response in blue](#).

Referee #1:

This is a short but important paper in that it describes the correction to OSIRIS pointing that is needed to make the data useful for trend calculation. The RSAS technique used to monitor the pointing errors is well established and they seem to understand its limitations. They have applied it to the OSIRIS data to determine a more accurate pointing and reprocessed the entire data set. The correction for the long term trend in pointing, the goal of this exercise, is nicely done. Figure 5 shows this very clearly. But the extent to which the scatter is cleaned up, especially in the first two years is remarkable. Can you explain this reduction in scatter?

[We also agree that the reduction in scatter is quite remarkable, and attribute it to the robustness of the RSAS correction. There must exist short time scale \(~daily\) error in the Odin attitude solution that is reliably detected and corrected by the RSAS algorithm. As we note in the paper \(section 3, paragraph 4\): “The overall observed variability at shorter time scales has also decreased significantly in the v5.10 comparison. This effect can be observed in most time periods, but it is most noticeable from 2005 to mid-2007. The reduction in variability of this difference on a daily average scale gives us confidence that the short term variability in the calculated RSAS correction is in fact real and not simply noise or an artefact of the technique.”](#)

Page 2 line 1 - need to note whether the trends Harris et al. refer to are for total column ozone or upper stratosphere.

[Yes, thank you. This statement refers to the upper stratosphere. We have clarified this in the revision.](#)

P2 line 2 - “in upper stratospheric ozone...”

[Correction done.](#)

Figure 3 - a better color scale might show the RSAS offsets more clearly. With this scale you can't tell where the offsets are near zero.

[A good point; we have revised the figure to use a more dynamic color scale that more clearly shows the lower values. See below.](#)

Page 5 last paragraph - is the daily average correction latitude dependent? This needs to be described a bit more clearly.

[The daily average correction is not latitude dependent, and we have now explicitly pointed this out in the text in this paragraph. We now state, “regions with high aerosol extinction or high/low albedo values that are discarded by the RSAS algorithm can have a large extent geographically, but even so there are still typically many valid scans in any given day that are used to construct the daily average. This yields one point per day with no geographical dependence.” However, as noted in the last paragraph of section 4, “because the latitudinal coverage varies throughout the year due to the sun-synchronous terminator orbit,](#)

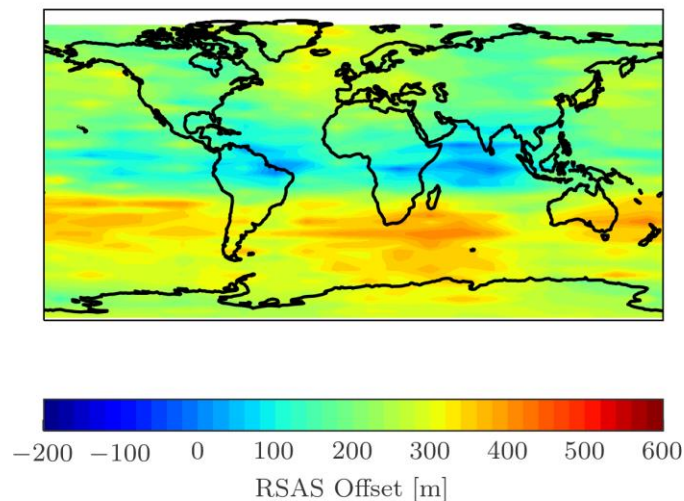
the daily average RSAS pointing correction can manifest with meridional structure even though latitudinal dependence is averaged over any given day.”

It is probably noted in the Bourassa paper, but the pre 1997 trend from SAGE shown in Figure 7 has a comparison issue in the upper stratosphere because SAGE measures near terminator while OSIRIS measures at non-terminator times. This is not an issue for the MLS comparisons.

Yes, the trend results must be treated carefully at the uppermost altitudes due to the photochemical dependence of ozone, although this is the case for essentially all trend analyses that use the SAGE II dataset, see for example the comprehensive results by Sofieva et al., AMT, 2017, and Steinbrecht et al., AMT, 2017. As pointed out by the referee, this is not an issue for the MLS comparisons.

Need to say how the version 5.10 data can be obtained. Provide links please.

The link to the OSIRIS Level 2 products with download instructions is now provided.



New version of Figure 3: Globally binned in latitude and longitude RSAS offsets for time period beginning in 2004 and ending in 2010. Values where the OSIRIS optics temperature is less than 18° C are excluded.

Author's Response: amt-2017-229 originally submitted on 07 Jul 2017

Title: Drift corrected Odin-OSIRIS ozone product: algorithm and updated stratospheric ozone trends

Authors: A. Bourassa, C. Roth, D. Zawada, L. Rieger, C. McLinden, D. Degenstein

Thank you to both referees for the helpful reviews. The referee comments are provided below, with [our response in blue](#).

Referee #2:

Major issue: This study assumes that the initial average and "stable" altitude bias of +200 m until ~2011 as derived from RSAS is a modelling artifact (p.5,1.26) and then assumes that the true bias must be zero, thus offsetting the entire time series of altitude shifts by -200 m (making the initial average bias zero). One argument in favor for doing this was that without altitude corrections the ozone bias from prior data versions with respect to other measurements (Adam's papers) was showing no meridional structure. I find this argument not convincing as we should not favor a certain procedure just to optimize a bias to some external data. It would be certainly better to show that indeed high level clouds introduce a systematic error in RSAS based upon RTM simulation. Alternatively, one could consider to show that by limiting OSIRIS data to cloud free scenes indeed a zero altitude bias can be found (at least on average). Figure 3 is in my regard only a hand waving argument.

[This is a very good point and we have studied this in some detail. We have found that the RSAS correction over the 2004-2010 baseline time period is a monotonically increasing function of retrieved effective surface reflectance \(albedo\). This "effective surface" reflectance also incorporates the effect of clouds on the upwelling radiation. The mean RSAS offset over the 2004-2010 time period and associated standard deviation, is shown in a new figure \(now labelled Figure 4 and shown below\). For low values of albedo, the average RSAS offset is essentially zero \(basically following the reviewer's suggestion to check the result for cloud-free scenes\). The RSAS offset increases to approximately 400 m at high albedo. For a typical albedo of 0.3, the RSAS offset is ~200 m. This shows that for low values of albedo, the RTM simulation and thus the RSAS result is quite robust, and when the albedo increases, the uncertainty in the tropospheric conditions increases leading to a bias in the RTM simulation and the derived RSAS offset. This discussion has been added to the revised version of the paper.](#)

Minor comments:

p.1,1.23: In the list of references profile trend papers are cited, but the Weatherhead paper is a total ozone trend paper. Why is this paper cited?

[Citation removed.](#)

p.2,1.8-10: Which of the three points raised by Harris et al. (2015) are addressed by this paper (probably i and ii), please state them.

[Yes, we have added the statement that "this work contributes to the first two of these three points."](#)

p.4,1.25; change "350 km" to "350 nm".

[Done, thank you for catching this.](#)

p.4,1.26: Why is the match done for radiances at 40 km and not higher? Does the albedo change if other altitudes are used? Please clarify.

Increasing stray light and decreasing signal-to-noise limit the ability to use higher tangent altitudes. This statement has been added to the text.

p.4,l.27: omit "the scan is".

Done.

p.6,l.5: are " albedo, stratospheric aerosol extinction, NO₂, and O₃" retrieved simultaneously or is the same algorithm (with different settings) used to retrieve the various quantities separately. Please specify. You may want to add a reference here.

This is specified in Degenstein et al., 2009, which we now reference here.

p.6,l.5-7: The sentence "No changes were made to the retrievals of the other species other than the pointing correction to the radiances; the impact of this correction on these other species has yet to be assessed." sounds awkward. What are "other species" than listed in the sentence before. You probably meant that the impact of the altitude corrections has only been assessed for ozone so far.

Yes, the statement is now clarified to say exactly that: "The impact of the RSAS correction has only been assessed for ozone so far."

p.6,l.8: The sub phrase "is not equivalent to simply shifting the retrieved ozone profile by the RSAS correction" implies that somebody has used that simple solution. If yes, then please cite the study or explain where this has been done.

This has not been done with a published product to our knowledge; however, we thought it pertinent to point out since a simple shift of the retrieved profile might seem tempting to a naïve observer. In fact, we tried this with the OSIRIS data set and found that the non-linearity of the inversion does impact the results, especially at low altitude.

p.7,l.24ff: The trend results should be compared to more recent results from Steinbrecht et al. (2017) and Sofieva et al. (2017) that are also part of this special issue.

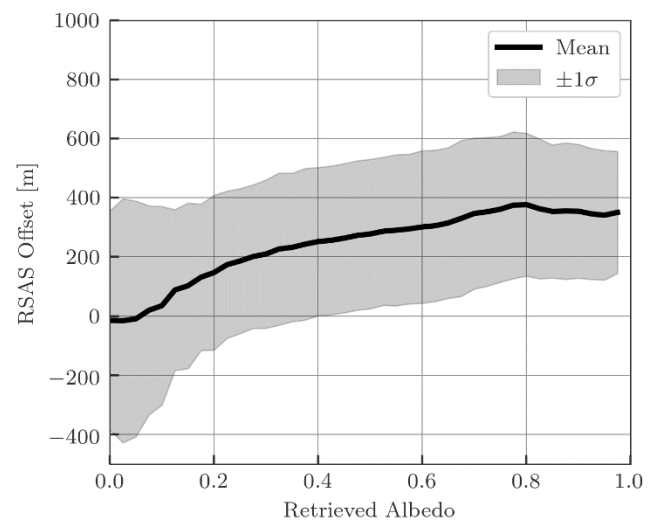
The trend results are very consistent with those presented by Steinbrecht et al., 2017, and Sofieva et al., 2017, which also use this drift-corrected OSIRIS data in combination with SAGE II, OMPS and other limb data records. This is noted in the text.

Figure 3: a better color scale for the contour plot that distinguishes between negative and positive values would be good.

Done. See response to referee #1.

Figure 4: Replace "GEOGRAPHIC AVERAGE FIGURE" in the caption by the correct figure number (guess Fig. 2).

Done. Yes, it's figure 2.



New Figure 4: The dependence of the mean derived RSAS offset (and standard deviation) on retrieved effective surface reflectance over the same 2004-2010 time period.

Drift corrected Odin-OSIRIS ozone product: algorithm and updated stratospheric ozone trends

Adam E. Bourassa¹, Chris Z. Roth¹, Daniel J. Zawada¹, Landon A. Rieger¹, Chris A. McLinden², Douglas A. Degenstein¹

¹Institute of Space and Atmospheric Studies, University of Saskatchewan, Saskatoon, Canada

²Environment and Climate Change Canada, Downsview, Ontario, Canada

Correspondence to: Adam E. Bourassa (adam.bourassa@usask.ca)

Abstract. A small, long-term drift in the Optical Spectrograph and Infrared Imager System (OSIRIS) stratospheric ozone product, manifested mostly since 2012, is quantified and attributed to a changing bias in the limb pointing knowledge of the instrument. A correction to this pointing drift using a predictable shape in the measured limb radiance profile is implemented and applied within the OSIRIS retrieval algorithm. This new data product, version 5.10, displays substantially better both long- and short-term agreement with MLS ozone throughout the stratosphere due to the pointing correction. Previously reported stratospheric ozone trends over the time period 1984–2013, which were derived by merging the altitude/number density ozone profile measurements from the Stratospheric Aerosol and Gas Experiment (SAGE) II satellite instrument (1984–2005) and from OSIRIS (2002–2013) are recalculated using the new OSIRIS version 5.10 product, and extended to 2017. These results still show statistically significant positive trends throughout the upper stratosphere since 1997, but at weaker levels that are more closely in line with estimates from other data records.

1 Introduction

Satellite observations have been used for over three decades to measure, diagnose and ultimately monitor stratospheric ozone variability and long term trends. Limb profiling observations have been of particular interest and importance, and analyses of these measurements have led to height resolved quantification of long term trends in stratospheric ozone and the effect of various drivers of variability including the quasi-biennial oscillation, the solar cycle, and the El Nino Southern Oscillation (for example see [Weatherhead et al., 2000](#), Randel and Wu, 2007; Kyrölä et al., 2013, Bourassa et al., 2014; Harris et al., 2015).

The most recent World Meteorological Organization (WMO) Scientific Assessment on Ozone Depletion (WMO, 2014) used many satellite based limb data sets. Two studies published shortly after (Harris et al., 2015; Tummon et al., 2015) also used these satellite limb data sets. All three works concluded that the statistically significant ozone depletion occurring before approximately the year 2000 was not evident in the post-2000 period. However, the studies diverged on the existence of a statistically significant recovery. Harris et al. (2015) state that “there is a hint of an average positive trend of approximately

2% per decade in mid-latitudes and approximately 3% per decade in the tropics” in the upper stratosphere, while WMO, 2014 conclude that there was a statistically significant increase in upper stratospheric ozone of between 2.5 and 5 percent per decade in the post 2000 timeframe. Tummon et al. (2015) wrote that there was a statistically significant increase in upper stratospheric ozone in the analysis of certain data records but not all. They do conclude, however, that “the mean trend of all
5 data sets is significant and positive in the southern midlatitudes between 5 and 0.5 hPa, in the tropics between 3 and 1 hPa, and in the northern mid-latitudes at just 2 hPa”. In light of these apparently conflicting results as Harris et al. (2015) stated, “the significance will become clearer as (i) more years are added to the observational record, (ii) further improvements are made to the historic ozone record (e.g. through algorithm development), and (iii) the data merging techniques are refined, particularly through a more rigorous treatment of uncertainties.”. These three points serve as goals of the new SPARC
10 activity Long-term Ozone Trends and Uncertainties in the Stratosphere (LOTUS) (<http://www.sparc-climate.org/activities/ozone-trends/>). This work contributes to the first two of these three points.

The original ozone trend work using the Odin-OSIRIS instrument (Murtagh et al., 2002; Llewellyn et al., 2004; McLinden et al., 2012) ozone data was performed by Sioris et al., 2014, and focused only on the tropical lower stratosphere. This was
15 extended by Bourassa et al., 2014 to cover altitudes from 18 km to 50 km over the latitude range 60°S to 60°N. Both of these studies performed a merging of the OSIRIS version 5.07 ozone data product, from 2002-2013, with the version 7 solar occultation profiles obtained by the Stratospheric Aerosol and Gas (SAGE) II satellite instrument, which extend over 1984-2005 (McCormick et al., 1989; Damadeo et al., 2013). The OSIRIS limb scattered sunlight measurements have precision and resolution similar to the SAGE II measurements, and merge in a straightforward fashion due to four years of mission
20 overlap. The merging is also simplified by the fact that for both instruments the inherent product is ozone number density on altitude levels such that complications from conversions from mixing ratio on pressure surfaces do not arise (McLinden and Fioletov, 2011). The conclusion of Bourassa et al. 2014 was that from 1997 to 2013 (the end of the OSIRIS data set analyzed at that point) there was a statistically significant recovery of 3-8% per decade throughout the stratosphere, except in the tropical lower stratosphere, where small but significant negative trends persisted.

25 It was noted by Bourassa et al., 2014, that the derived positive trends were somewhat higher than those reported from a similar merging analysis by Kyrola et al., 2013, using the SAGE II and Global Ozone Monitoring by Occultation of Stars (GOMOS) measurements. They also noted that the long-term stability of OSIRIS up to 2012, was assessed by Adams et al. (2014) using comparisons between OSIRIS, GOMOS, the Microwave Limb Sounder (MLS) and ozonesondes. This analysis
30 showed that the OSIRIS data product did show some regions of positive drift (meaning higher ozone values) with respect to the other data sets, particularly after 2010; however, the global average drifts were < 3% per decade between approximately 18-45 km. Bourassa et al., 2014 chose not to modify the calculated trends to account for the possible drift, and instead, modified the statistical uncertainty by adding 3% per decade in quadrature to the calculated uncertainties from the regression.

More recently, the bias and drift of a large number of satellite limb profile ozone data records, many of which were used for trend estimation, were systematically assessed by Hubert et al., 2016. The stability of each of the limb data records was tested against ground-based ozonesondes and a stratospheric ozone lidar network. This study found that the drift against these ground-based measurements for most limb instruments is smaller than $\pm 5\%$ per decade; however, a small number of the instruments, including OSIRIS, were found to have somewhat higher, significant, long term drifts. The summary concludes that a small positive drift is present in OSIRIS ozone between 20-35 km (smaller than, or close to the defined 5% significance threshold), and a larger drift (up to 8% per decade in some regions) exists at upper stratospheric altitudes. In the most recent years, i.e. since 2014, this drift has become larger and visually apparent in the ozone time series. For example, Fig. 1 shows the OSIRIS version 5.07 ozone time series at 40.5 km, for latitude bins centred at 30 S and 30 N, as well as the MLS ozone time series at the same locations. The reported MLS volume mixing ratio profiles on pressure levels are converted to number density on altitude levels using ECMWF ERA-Interim reanalysis fields (Dee et al., 2011). The vertical dashed line on Fig. 1 shows the end of the data set used for the Bourassa et al., 2014 trend analysis. It is clear that since approximately that point there is a definitive positive drift in the OSIRIS measurements with respect to MLS. There is a smaller, but also noticeable, positive drift starting as early as 2010.

In this work, we identify the source of the drift in the OSIRIS ozone product as a small systematic error in the limb pointing knowledge of the instrument that is nominally determined by on-board star trackers. This error has a seasonal cycle and also has slowly increased in magnitude since approximately 2010. The pointing error is estimated using a variant of a well-known technique for limb scatter altitude registration using the shape of the UV radiance profile. We have implemented this pointing correction into the tangent point registration of the limb radiance profiles and re-processed the entire OSIRIS ozone data product, released as version 5.10, up to the present time using the identical algorithm from the previous version 5.07 (Degenstein et al., 2009) that was used for the trend assessments. The effectiveness of the pointing correction is demonstrated through comparison of the time series with MLS measurements, and revised SAGE II-OSIRIS trend results are presented showing recovery throughout the upper stratosphere that is still statistically significant, but at weaker levels than previously reported.

2 Pointing Correction Technique

The Rayleigh Scattering Attitude Sensor (RSAS) is an instrument that measured the characteristic shape of the limb scattered sunlight radiance profile from Space Shuttle STS-72 (Janz et al., 1996) in order to determine the altitude registration of the tangent points of the instrument lines of sight. This approach, now generally referred to in the community as the RSAS technique, has since been tested and/or used in several variants for many limb scatter measurements including those from the Shuttle Ozone Limb Sounding Experiment (SOLSE) (McPeters et al., 2000), the Limb Ozone Retrieval Experiment (LORE)

(Flittner et al., 2004), SAGE III (Rault, 2005), more recently for the Ozone Mapping and Profiler Suite (OMPS) (Moy et al., 2017).

Briefly, the RSAS technique takes advantage of the fact that the shape of the limb radiance at 350 nm has a characteristic “knee” in the profile near 20 km due to the high optical thickness of the limb line-of-sight. Thus, near and below this altitude the limb radiance is roughly constant and essentially insensitive to the limb pointing. Alternately, above 30 km the atmospheric path is quite optically thin and the limb radiance approximately follows the exponential pressure gradient making it very sensitive to the altitude of the tangent point. Therefore the ratio of radiances from these two altitude regions can be used to compare to a model calculation of the same quantity to test the altitude registration of the profile. The ratio provides a cancellation of the effect of the unknown diffuse upwelling radiance from clouds and the Earth’s surface, and removes the requirement for an absolute calibration of the instrument. Also, this wavelength has essentially zero ozone absorption; however, the technique does have some sensitivity to stratospheric aerosol that can bias the results. See Moy et al., 2017, for a more detailed discussion of the general RSAS technique.

We have used a simple implementation of the RSAS technique for the OSIRIS pointing correction. We define the RSAS ratio for a limb scan as the mean of the logarithm of the measured 350 nm limb radiance for all tangent points falling between 18.5-22.5 km divided by the same for tangent points between 30.5-36.5 km. This same ratio is then calculated with the SASKTRAN radiative transfer model (Bourassa et al., 2008; Zawada et al., 2016) by simulating the limb radiance at the same tangent points as the measurement. The difference between measured and modelled ratios is minimized in a least squares sense by shifting the tangent points of the measured radiance profile by interpolating the logarithm of the measured radiance in altitude.

The radiative transfer calculation is done using the version 5.07 retrieved ozone and stratospheric aerosol profiles as inputs. Temperature and air density are taken from ECMWF ERA-Interim (Dee et al., 2011). Before the RSAS calculation, the albedo is first retrieved for each scan at 350 nm by adjusting the albedo in the radiative transfer model such that measured and modelled radiance match at 40 km tangent altitude. **Increasing stray light and decreasing signal-to-noise limit the ability to use higher tangent altitudes.** The RSAS shift for any given OSIRIS limb scan is not calculated and excluded from the analysis if the retrieved aerosol extinction above 18 km is greater than $3 \times 10^{-4} \text{ km}^{-1}$, which is approximately the level that starts to cause uncertainty in RSAS greater than the inherent measurement noise.

The calculated tangent height shifts for every applicable scan in the entire OSIRIS mission are shown with blue markers in Fig. 2, and the daily average shift is indicated in black. The RSAS analysis shows that a relatively strong annual cycle in the pointing correction on the order of 400 m beginning in April/May of every year when the Odin satellite enters solar eclipse for a fraction of every orbit. During this period, the eclipse geometry causes stronger thermal cycles on the satellite

than during the rest of the year. For example, the OSIRIS optics box temperature is also shown on Fig. 2 and indicates the colder temperatures observed during the summertime eclipse period. Note that the RSAS shift is positively correlated with this temperature. It is likely that these colder temperatures cause thermal contraction that results in an angular offset of the assumed static boresight of OSIRIS with respect to the Odin reference frame and therefore a limb pointing offset.

5

An upward trend in the calculated RSAS shifts is also observed in the later years of the mission, i.e. since approximately 2012, which qualitatively matches the observed drift in OSIRIS ozone shown in Fig. 1. Interestingly the temperature of the optics box also has a trend in the later years of the mission; however, it begins earlier than 2012 and is negatively correlated with the derived RSAS shift. The cause of the thermal drift is related to the slow precession and decay of the Odin orbit and is not well understood. The fact that the sign of the correlation between optics temperature and RSAS shift is opposite with respect to the eclipse period and the long-term thermal drift means that this temperature cannot be used in any predictive sense. Even outside the eclipse period, the correlation is weak (i.e. 0.3 for the months of January). However, we include it here simply to show that the changing thermal environment of the satellite is very likely related to the errors in the pointing knowledge.

15

Prior to ~2011 and outside of the eclipse season the RSAS technique suggests there is a bias in the pointing offset on the order of 200 m. So to better understand the limitations of the RSAS technique we analyse the calculated tangent height offsets between 2004 and 2010 and outside of the eclipse period. ~~Previous studies have detected no time dependent biases in the OSIRIS measurements outside of the eclipse periods for these years, and have also observed no meridional dependence in high altitude ozone biases (Adams et al., 2013; Adams et al., 2014). Therefore, we would expect the average tangent height offset to be zero with no latitudinal structure during this time.~~ When we bin all of the RSAS values in latitude and longitude, there are distinct geographic features with an average offset of ~200 m. This is shown on the map in Fig. 3. The geographic structure is reminiscent of high altitude cloud distributions and likely indicates a deficiency in the assumption of a Lambertian surface for modelling the diffuse upwelling radiation in the presence of clouds. ~~In fact, we have found that the RSAS correction over the 2004-2010 baseline time period is a monotonically increasing function of retrieved albedo, i.e. effective surface reflectance (see Fig. 4). For low values of albedo, the average RSAS offset is essentially zero. The RSAS offset increases to approximately 400 m at high albedo. The retrieved albedo, or “effective surface” reflectance, also incorporates the effect of clouds on the upwelling radiation. This shows that for low values of albedo, the RTM simulation and thus the RSAS result is quite robust, and when the albedo increases, the uncertainty in the tropospheric conditions increases leading to a bias in the RTM simulation and the derived RSAS offset.~~

25

30

Thus, if this observed spatial structure is indeed from a deficiency in the modelling and not part of the true pointing offset of the OSIRIS instrument, we can perform a first order correction for this structure by correcting the derived RSAS shift by the geographic average shown in Fig. 3 as a type of calibration for the technique. Therefore, for every scan’s calculated RSAS

offset, we subtract the 2004-2010 spatial average, essentially forcing the spatial average value to be zero from 2004 to 2010. These corrected RSAS shifts for each scan are then averaged over each day to create the full mission daily RSAS shift that is shown in Fig. 5. Scans with RSAS shift values greater than 1000 m, which is well outside the normal variability, are rejected in the daily average. Also, regions with high aerosol extinction or high/low albedo values that are discarded by the RSAS algorithm can have a large extent geographically, but even so there are still typically many valid scans in any given day that are used to construct the daily average. **This yields one point per day with no geographical dependence.** The final time series of daily average RSAS shift, shown in Fig. 5, is then interpolated to the time of every scan to calculate the offset that is applied to the tangent altitudes for the version 5.10 processing.

3 The version 5.10 ozone product

The version 5.10 ozone product is produced using the same retrieval algorithm as the previously released version 5.07, which includes retrievals of albedo, stratospheric aerosol extinction, NO₂, and ozone (Degenstein et al., 2009). **The impact of the RSAS correction has only been assessed for ozone so far.** Note that it is important that the RSAS pointing correction is applied to the limb radiances before the retrieval, as even though the retrieval algorithm is identical, this is not equivalent to simply shifting the retrieved ozone profile by the RSAS correction. The retrieval is non-linear, particularly in the lower stratosphere, and the altitude registration of the limb radiances must be corrected before the retrieval in order to obtain a self-consistent result.

The only other change from version 5.07 is the change of temperature and air density profiles used in the forward model from ECMWF-operational to ECMWF ERA-Interim. As a global reanalysis, the ERA-Interim product is a highly appropriate choice for this mission reprocessing, as the ~2 month delay in release of the products is not a concern. It has also been encouraged as a standard input for this type of application by the SPARC SI2N working group (<http://igaco-o3.fmi.fi/VDO/>). We do not expect this change to create a large difference between the product versions, so in the interest of efficient utilization of computational resource we implemented this change in the same reprocessing as the RSAS pointing correction.

The effectiveness of the RSAS pointing correction in the version 5.10 product is demonstrated in Fig. 6, which shows the percent difference in daily zonal mean ozone relative to MLS v4.2 for both OSIRIS v5.07 and v5.10 in the tropics at 40.5 km. The v5.07 data exhibits a $(8.97 \pm 0.56) \%$ / decade drift relative to MLS while the RSAS corrected v5.10 shows substantially reduced drift of $(0.69 \pm 0.26) \%$ / decade. Note that here we simply fit a straight line to the time series and did not attempt to fit and/or correct for any annual or interannual cycles. Other latitudes and altitudes show similar behaviour, although in many locations the drift in v5.07 was not as large as that shown in this example.

The overall observed variability at shorter time scales has also decreased significantly in the v5.10 comparison. This effect can be observed in most time periods, but it is most noticeable from 2005 to mid-2007. The reduction in variability of this difference on a daily average scale gives us confidence that the short term variability in the calculated RSAS correction is in fact real and not simply noise or an artefact of the technique.

5

During the summertime orbital eclipse, differences relative to MLS are also greatly reduced, but still present. It is possible that the RSAS technique is underestimating the necessary offset, but this seems unlikely as the overall drift is corrected nearly perfectly and is of the same order of magnitude. A more likely possibility is that the change in optics temperature during eclipse times has a separate effect on the OSIRIS spectral point-spread function which is not being accounted for in the retrieval process. These differences are still under investigation and will be addressed in future versions of the retrieval algorithm.

10

4 Impact on Trends

To examine the impact of the pointing correction on the derived ozone trends from the merged SAGE II version 7 and OSIRIS records we have used the version 5.10 ozone product to perform the same analysis of Bourassa et al., 2014, now extended to 2017. Briefly, the merged and de-biased anomalies, binned as a function of latitude and altitude are fit with a multivariate linear regression model that includes predictor functions including principal components of the quasi-biennial oscillation, the F10.76 solar flux, the El Nino Southern Oscillation index, the tropopause pressure, and a piecewise linear term with inflection point fixed at 1997. For a detailed development and discussion of the regression model see Bourassa et al., 2014. Note that there is no diurnal correction applied to the SAGE II data so the comparison to other trend results must be done with this in mind. Example deseasonalized ozone anomalies for the same two latitude/altitude bins shown in Fig. 1, calculated for both OSIRIS v5.10 and MLS v4.2, are shown in Fig. 7. Note that there is no discernible drift between the two instruments and the short term variability is well matched throughout the data records.

15

20

With the linear regression model, we find very similar results to Bourassa et al., 2014 in terms of the significance of the predictor functions and the capability of the model to explain the overall variability. The correction of the pointing error did, however, have an impact on the calculated linear trends, mostly since 1997. The magnitude of the linear trends for pre- and post-1997 are shown in Fig. 8, with black contours marking steps of 2% per decade. Cross hatching marks regions that are not statistically significant with the AR1 regression.

25

The trends found here in the post-1997 period show 1-3% per decade recovery with significance throughout most of the stratosphere above 25 km, except for a region of essentially zero trend extending through most altitudes between 10 S and 10 N and in the Southern Hemisphere between 25 and 35 km. In most locations these trends are smaller than the 3-8% per

30

decade reported by Bourassa et al., 2014. The overall structure is different as well and displays a reduction in the asymmetrically strong Southern Hemisphere recovery found previously. Note that because the latitudinal coverage varies throughout the year due to the sun-synchronous terminator orbit, the daily average RSAS pointing correction can manifest with meridional structure even though latitudinal dependence is averaged over any given day. The decreasing trend in the tropical lower stratosphere, found previously by Sioris et al., 2014 and Bourassa et al., 2014, remains statistically significant in these updated and pointed corrected results, although with slightly reduced extent. The trend results are very consistent with those presented by Steinbrecht et al., 2017, and Sofieva et al., 2017, which also use this drift-corrected OSIRIS data in combination with SAGE II, OMPS and other limb data records.

5 Summary and Conclusion

The OSIRIS ozone product was one of several satellite limb datasets used in the 2014 WMO ozone assessment and other supporting studies during the same time frame. Overall the conclusions of these studies were varied as to the magnitude and significance of ozone recovery. Trends reported at that time by Bourassa et al., 2014, using merged SAGE II and OSIRIS measurements were between 3-8% per decade throughout most of the stratosphere, which was generally higher than detected by most other instruments.

A positive drift in the OSIRIS ozone measurements, independently identified by Hubert et al., 2016, through comparison with ground-based observations, is attributed here to a systematic error in the pointing knowledge of the OSIRIS limb radiance measurements, affecting the altitude registration of the profile mostly since 2012. A variant of a well-known technique for pointing determination from the shape of the limb radiance profile, called RSAS, is developed and applied to the OSIRIS measurements. The derived correction was then used to generate a new version of the retrieved ozone product, publically released as version 5.10.

Comparisons with MLS ozone show that the drift in version 5.07 is substantially reduced, together with a convincing decrease in the short term differences observed in the two products. The trend calculation of Bourassa et al., 2014, is repeated with the new version 5.10 product and updated to 2017. These results still show statistically significant recovery throughout much of the upper stratosphere, but at reduced levels of 1-3% per decade.

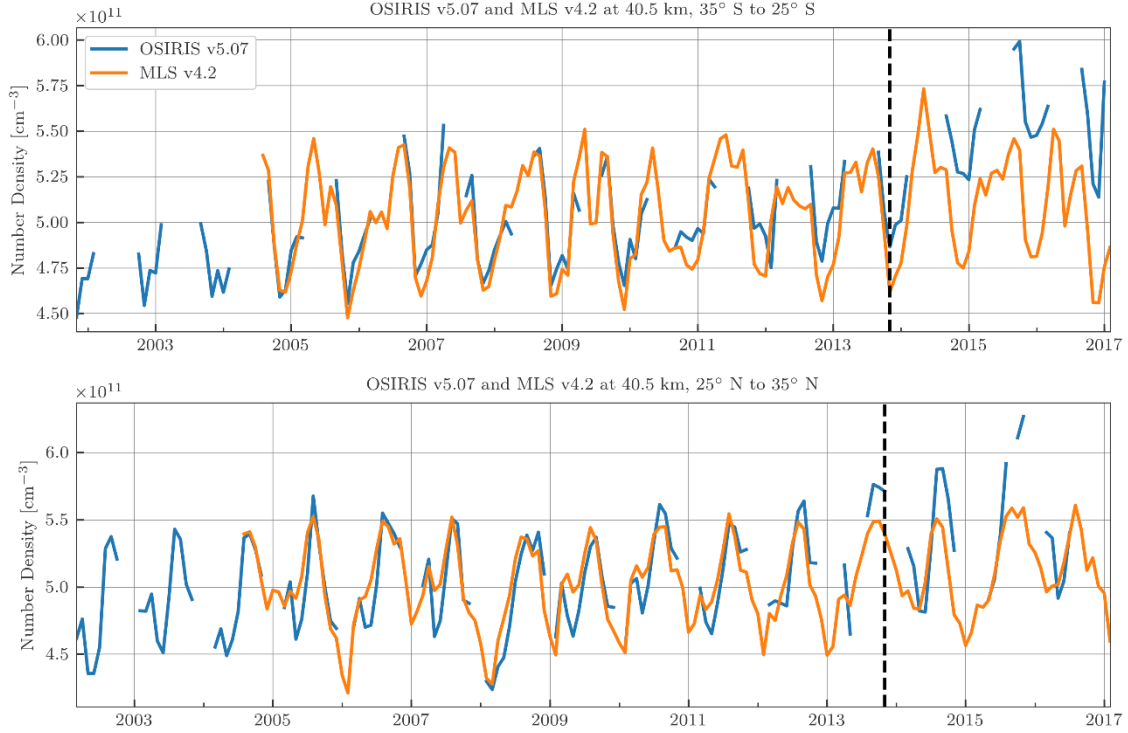


Figure 1: OSIRIS version 5.07 and MLS version 4.2 ozone density at 40.5 km and 35° S to 25° S (top), and 25° N to 35° N (bottom).
The end of the OSIRIS data set used in the Bourassa et al., 2014 trend study is marked with the vertical black dashed line.

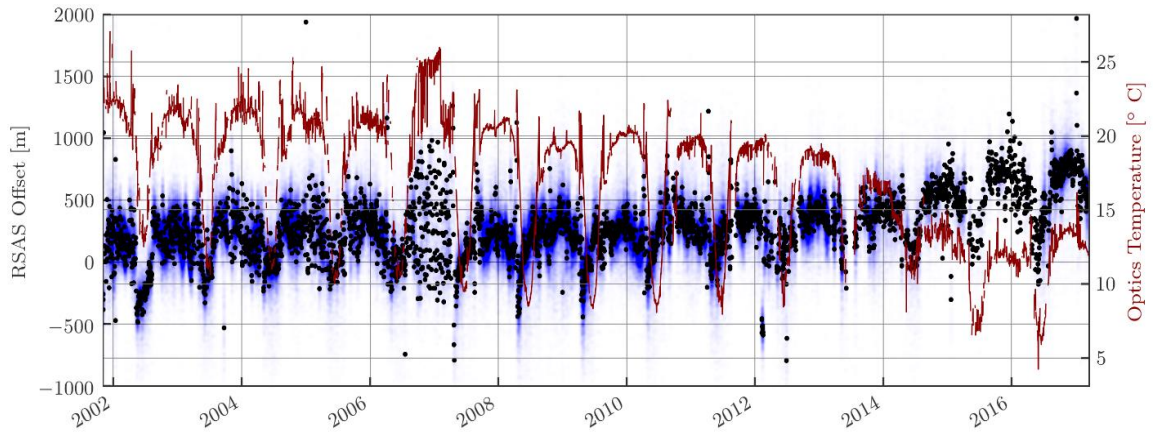


Figure 2: Calculated RSAS tangent height offset for every OSIRIS scan (transparent blue dots) and daily averages (black dots).
The daily average OSIRIS optics box temperature is shown as the red line.

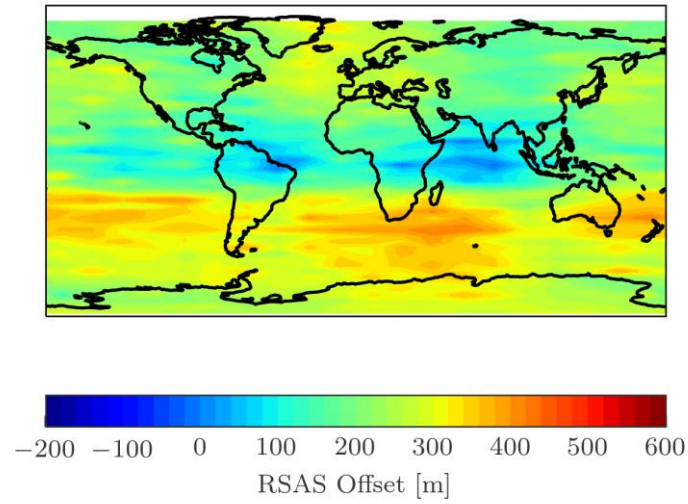


Figure 3: Globally binned in latitude and longitude RSAS offsets for the time period beginning in 2004 and ending in 2010. Values
 5 where the OSIRIS optics temperature is less than 18° C are excluded.

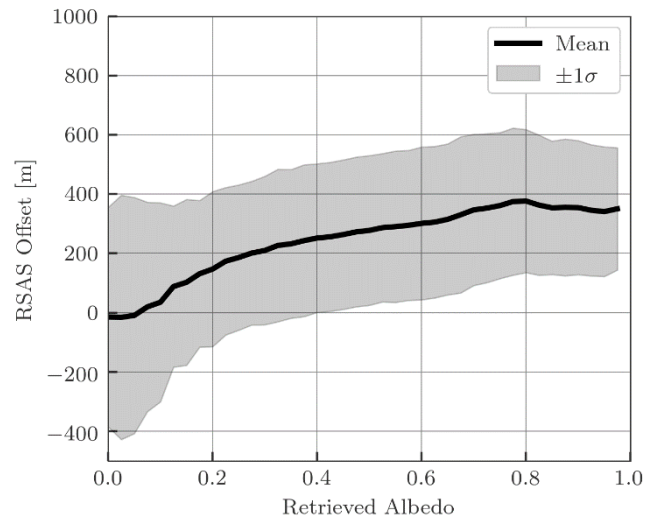


Figure 4: The dependence of the mean derived RSAS offset (and standard deviation) on retrieved effective surface reflectance over
 the same 2004-2010 time period.

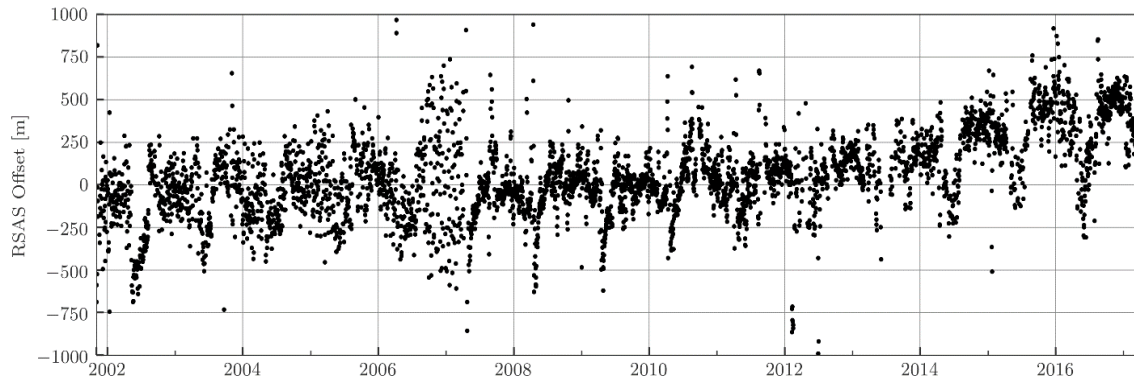
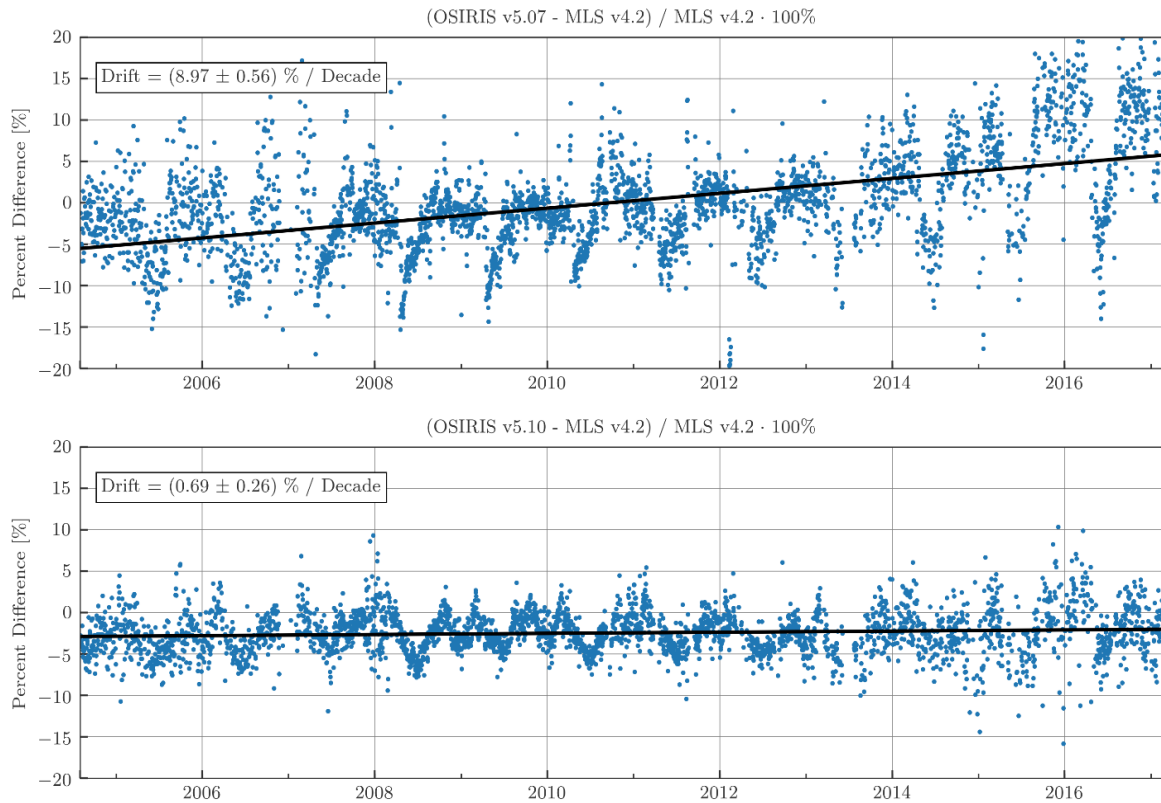


Figure 5: Daily average RSAS tangent height offset after subtracting the geographic average from Fig. 3. This is the final correction that is used in v5.10 data processing.



5

Figure 6: Daily averaged percent difference in zonal mean ozone from 10° S to 10° N at 40.5 km relative to MLS v4.2 for OSIRIS v5.07 (top) and OSIRIS v5.10 (bottom). The MLS v4.2 data is converted to number density on an altitude grid using ERA interim reanalysis pressure and temperature fields. Simple best fit straight line drift estimates are shown in black with uncertainties reported as the 2 σ values.

10

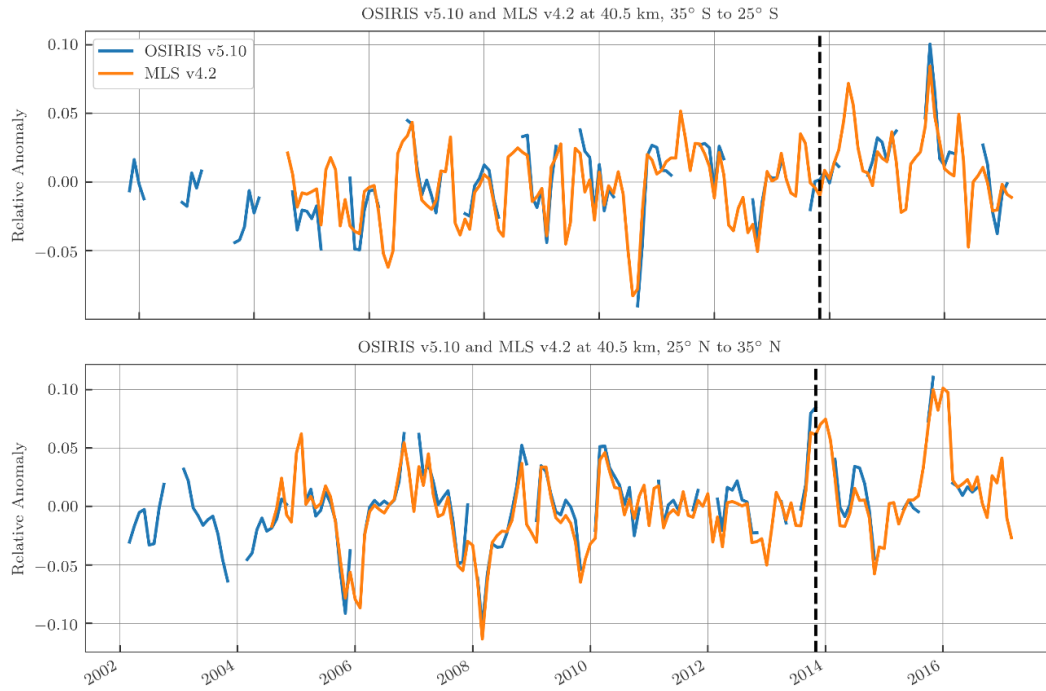


Figure 7: Ozone anomalies used for the trend calculation from pointing corrected OSIRIS version 5.10, together with the same from MLS at the same locations specified in Figure 1.

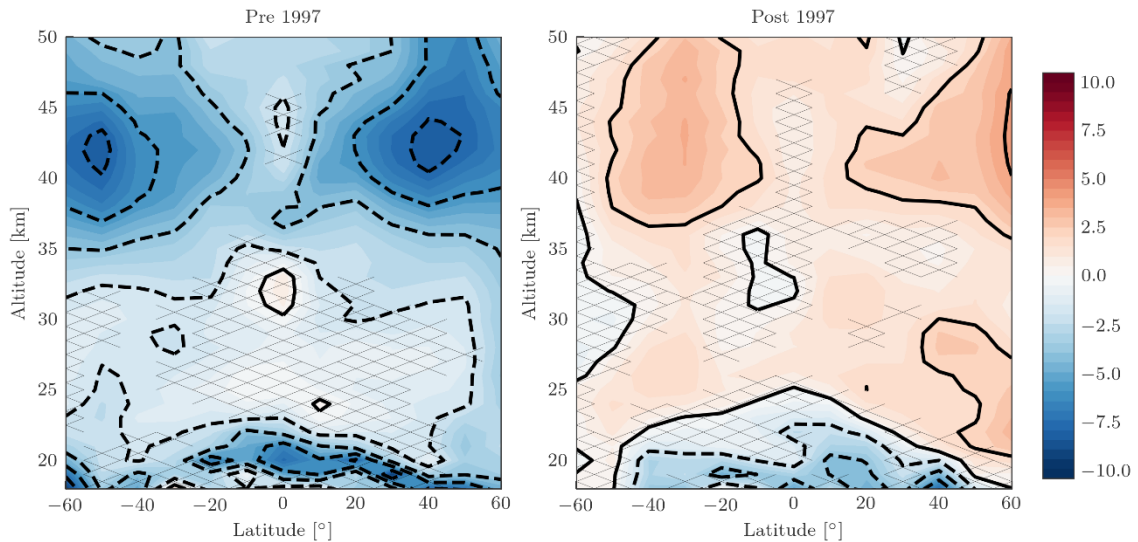


Figure 8: Updated linear ozone trends pre- and post-1997, in percent per decade, following the method of Bourassa et al., 2014, using SAGE II version 7 and the pointing corrected OSIRIS version 5.10 ozone product. The cross-hatching denotes regions that are not statistically significant. Black contours mark steps of 2% per decade.

Data Availability

OSIRIS data are available for download at <http://odin-osiris.usask.ca/?q=node/280>

Acknowledgements

5 This work was supported by the Natural Sciences and Engineering Research Council (Canada) and the Canadian Space Agency (CSA). Odin is a Swedish-led satellite project funded jointly by Sweden (SNSB), Canada (CSA), France (CNES) and Finland (Tekes).

References

- Adams, C., Bourassa, A. E., Bathgate, A. F., McLinden, C. A., Lloyd, N. D., Roth, C. Z., Llewellyn, E. J., Zawodny, J. M., Flittner, D. E., Manney, G. L., Daffer, W. H., and Degenstein, D. A.: Characterization of Odin-OSIRIS ozone profiles with the SAGE II dataset, *Atmos. Meas. Tech.*, 6, 1447-1459, doi:10.5194/amt-6-1447-2013, 2013.
- Adams, C., Bourassa, A. E., Sofieva, V., Froidevaux, L., McLinden, C. A., Hubert, D., Lambert, J.-C., Sioris, C. E., and Degenstein, D. A.: Assessment of Odin-OSIRIS ozone measurements from 2001 to the present using MLS, GOMOS, and ozonesondes, *Atmos. Meas. Tech.*, 7, 49-64, doi:10.5194/amt-7-49-2014, 2014.
- 15 Bourassa, A. E., Degenstein, D. A., & Llewellyn, E. J., SASKTRAN: A spherical geometry radiative transfer code for efficient estimation of limb scattered sunlight. *Journal of Quantitative Spectroscopy and Radiative Transfer*, 109(1), 52-73, 2008.
- 20 Bourassa, A. E., Degenstein, D. A., Randel, W. J., Zawodny, J. M., Kyrölä, E., McLinden, C. A., Sioris, C. E., and Roth, C. Z.: Trends in stratospheric ozone derived from merged SAGE II and Odin-OSIRIS satellite observations, *Atmos. Chem. Phys.*, 14, 6983-6994, doi:10.5194/acp-14-6983-2014, 2014.
- 25 Damadeo, R. P., Zawodny, J. M., Thomason, L. W., and Iyer, N.: SAGE version 7.0 algorithm: application to SAGE II, *Atmos. Meas. Tech.*, 6, 3539-3561, doi:10.5194/amt-6-3539-2013, 2013.
- Degenstein, D. A., Bourassa, A. E., Roth, C. Z., and Llewellyn, E. J.: Limb scatter ozone retrieval from 10 to 60 km using a multiplicative algebraic reconstruction technique, *Atmos. Chem. Phys.*, 9, 6521-6529, doi:10.5194/acp-9-6521-2009, 2009.

- Dee, D. P., Uppala, S. M., Simmons, A. J., Berrisford, P., Poli, P., Kobayashi, S., Andrae, U., Balmaseda, M. A., Balsamo, G., Bauer, P., Bechtold, P., Beljaars, A. C. M., van de Berg, L., Bidlot, J., Bormann, N., Delsol, C., Dragani, R., Fuentes, M., Geer, A. J., Haimberger, L., Healy, S. B., Hersbach, H., Hólm, E. V., Isaksen, I., Kållberg, P., Köhler, M., Matricardi, M., McNally, A. P., Monge-Sanz, B. M., Morcrette, J.-J., Park, B.-K., Peubey, C., de Rosnay, P., Tavolato, C., Thépaut, J.-N., and Vitart, F., The ERA-Interim reanalysis: configuration and performance of the data assimilation system. *Q.J.R. Meteorol. Soc.*, 137: 553–597. doi: 10.1002/qj.828, 2011.
- Flittner, D. E., Hilsenrath, E., Janz, S. J., Loughman, R. P., McPeters, R. D., & Rault, D. F., Retrievals from the Limb Ozone Retrieval Experiment on STS 107. In *Proceedings of SPIE* (Vol. 5542, pp. 215-226), 2004.
- Harris, N. R. P., Hassler, B., Tummon, F., Bodeker, G. E., Hubert, D., Petropavlovskikh, I., Steinbrecht, W., Anderson, J., Bhartia, P. K., Boone, C. D., Bourassa, A., Davis, S. M., Degenstein, D., Delcloo, A., Frith, S. M., Froidevaux, L., Godin-Beekmann, S., Jones, N., Kurylo, M. J., Kyrölä, E., Laine, M., Leblanc, S. T., Lambert, J.-C., Liley, B., Mahieu, E., Maycock, A., de Mazière, M., Parrish, A., Querel, R., Rosenlof, K. H., Roth, C., Sioris, C., Staehelin, J., Stolarski, R. S., Stübi, R., Tamminen, J., Vigouroux, C., Walker, K. A., Wang, H. J., Wild, J., and Zawodny, J. M.: Past changes in the vertical distribution of ozone – Part 3: Analysis and interpretation of trends, *Atmos. Chem. Phys.*, 15, 9965-9982, doi:10.5194/acp-15-9965-2015, 2015.
- Hubert, D., Lambert, J.-C., Verhoelst, T., Granville, J., Keppens, A., Baray, J.-L., Bourassa, A. E., Cortesi, U., Degenstein, D. A., Froidevaux, L., Godin-Beekmann, S., Hoppel, K. W., Johnson, B. J., Kyrölä, E., Leblanc, T., Lichtenberg, G., Marchand, M., McElroy, C. T., Murtagh, D., Nakane, H., Portafaix, T., Querel, R., Russell III, J. M., Salvador, J., Smit, H. G. J., Stebel, K., Steinbrecht, W., Strawbridge, K. B., Stübi, R., Swart, D. P. J., Taha, G., Tarasick, D. W., Thompson, A. M., Urban, J., van Gijssel, J. A. E., Van Malderen, R., von der Gathen, P., Walker, K. A., Wolfram, E., and Zawodny, J. M.: Ground-based assessment of the bias and long-term stability of 14 limb and occultation ozone profile data records, *Atmos. Meas. Tech.*, 9, 2497-2534, doi:10.5194/amt-9-2497-2016, 2016.
- Janz, S. J., Hilsenrath, E., Flittner, D. E., & Heath, D. F., Rayleigh scattering attitude sensor, *Proc. SPIE*, 146-153, 1996.
- Kyrölä, E., M. Laine, V. Sofieva, J. Tamminen, S-M. Päiväranta, S. Tukiainen, J. Zawodny, and L. Thomason, Combined SAGE II-GOMOS ozone profile data set 1984–2011 and trend analysis of the vertical distribution of ozone, *Atmos. Chem. Phys.* 13, 10645–10658, 2013.
- Llewellyn, E.J., N.D. Lloyd, D.A. Degenstein, R.L. Gattinger, S.V. Petelina, A.E. Bourassa, J.T. Wiensz, et al., The OSIRIS instrument on the Odin spacecraft, *Canadian Journal of Physics*, 82, 411-422, doi:10.1139/P04-005, 2004.

- McCormick, M. P., J. M. Zawodny, R. E. Viegas, J. C. Larson, and P. H. Wang, An overview of SAGE I and II ozone measurements, *Planet. Space Sci.*, 37, 1567–1586, doi:10.1016/0032-0633(89)90146-3, 1989.
- McLinden, C. A., A. E. Bourassa, S. Brohede, M. Cooper, D. A. Degenstein, W. J. F. Evans, R. L. Gattinger, C. S. Haley, E. J. Llewellyn, N. D. Lloyd, P. Loewen, R. V. Martin, J. C. McConnell, I. C. McDade, D. Murtagh, L. Rieger, C. von Savigny, P. Sheese, C. E. Sioris, B. Solheim, and K. Strong, OSIRIS: A decade of scattered light, *Bull. Am. Met. Soc.*, 93, 1845-1863, doi: 10.1175/BAMS-D-11-00135.1, 2012.
- McLinden, C. A. and V. Fioletov, Quantifying trends in stratospheric ozone: Complications due to stratospheric cooling, *Geophys. Res. Lett.*, 38, L03808, doi:10.1029/2010GL046012, 2011.
- McPeters, R. D., Janz, S. J., Hilsenrath, E., Brown, T. L., Flittner, D. E., and Heath, D. F., The retrieval of O₃ profiles from limb scatter measurements: Results from the Shuttle Ozone Limb Sounding Experiment. *Geophys. Res. Lett.*, 27(17), 2597-2600, 2000.
- Moy, L., Bhartia, P. K., Jaross, G., Loughman, R., Kramarova, N., Chen, Z., Taha, G., Chen, G., and Xu, P.: Altitude registration of limb-scattered radiation, *Atmos. Meas. Tech.*, 10, 167-178, doi:10.5194/amt-10-167-2017, 2017.
- Murtagh, Donal, Urban Frisk, Frank Merino, Martin Ridal, Andreas Jonsson, Jacek Stegman, Georg Witt et al., An overview of the Odin atmospheric mission, *Can. J. Phys.*, 80, 4:309-319, 2002.
- Randel, W. J. and Wu, F.: A stratospheric ozone profile data set for 1979-2005: Variability, trends, and comparisons with column ozone data, *J. Geophys. Res.*, 112, D06313, doi:10.1029/2006JD007339, 2007.
- Rault, D. F., Ozone profile retrieval from Stratospheric Aerosol and Gas Experiment (SAGE III) limb scatter measurements, *J. Geophys. Res.*, 110(D9), 2005.
- Sioris, C. E., McLinden, C. A., Fioletov, V. E., Adams, C., Zawodny, J. M., Bourassa, A. E., Roth, C. Z., and Degenstein, D. A.: Trend and variability in ozone in the tropical lower stratosphere over 2.5 solar cycles observed by SAGE II and OSIRIS, *Atmos. Chem. Phys.*, 14, 3479-3496, doi:10.5194/acp-14-3479-2014, 2014.
- Sofieva, V. F., Kyrölä, E., Laine, M., Tamminen, J., Degenstein, D., Bourassa, A., Roth, C., Zawada, D., Weber, M., Rozanov, A., Rahpoe, N., Stiller, G., Laeng, A., von Clarmann, T., Walker, K. A., Sheese, P., Hubert, D., van Roozendaal, M., Zehner, C., Damadeo, R., Zawodny, J., Kramarova, N., and Bhartia, P. K.: Merged SAGE II, Ozone_cci and OMPS

ozone profile dataset and evaluation of ozone trends in the stratosphere, *Atmos. Chem. Phys.*, 17, 12533-12552, <https://doi.org/10.5194/acp-17-12533-2017>, 2017.

- Steinbrecht, W., Froidevaux, L., Fuller, R., Wang, R., Anderson, J., Roth, C., Bourassa, A., Degenstein, D., Damadeo, R.,
5 Zawodny, J., Frith, S., McPeters, R., Bhartia, P., Wild, J., Long, C., Davis, S., Rosenlof, K., Sofieva, V., Walker, K.,
Rahpoe, N., Rozanov, A., Weber, M., Laeng, A., von Clarmann, T., Stiller, G., Kramarova, N., Godin-Beekmann, S.,
Leblanc, T., Querel, R., Swart, D., Boyd, I., Hocke, K., Kämpfer, N., Maillard Barras, E., Moreira, L., Nedoluha, G.,
Vigouroux, C., Blumenstock, T., Schneider, M., García, O., Jones, N., Mahieu, E., Smale, D., Kotkamp, M., Robinson, J.,
10 Petropavlovskikh, I., Harris, N., Hassler, B., Hubert, D., and Tummon, F.: An update on ozone profile trends for the period
2000 to 2016, *Atmos. Chem. Phys.*, 17, 10675-10690, <https://doi.org/10.5194/acp-17-10675-2017>, 2017.

- Tummon F, Hassler B, Harris NRP, Staehelin J, Steinbrecht W, Anderson J, Bodeker GE, Bourassa AE, Davis SM,
Degenstein D, Frith SM, Froidevaux L, Kyrölä E, Laine M, Long C, Penckwitt AA, Sioris CE, Rosenlof KH, Roth C, Wang
HJ, Wild J, Intercomparison of vertically resolved merged satellite ozone data sets: interannual variability and long-term
15 trends, *Atmos. Chem. And Phys.*, 15, 3021-3043, 2015.

~~Weatherhead, E. C., Reinsel, G. C., Tiao, G. C., Jackman, C. H., Bishop, L., Hollandsworth Firth, S. M., Deluisi, J., Keller,
T., Oltmans, S. J., Fleming, E. L., Wuebbles, D. J., Kerr, J. B., Miller, A. J., Herman, J., and McPeters, R.: Detecting the
recovery of total column ozone, *J. Geophys. Res.*, 105, 22201–22210, 2000.~~

20

World Meteorological Organization (WMO), Scientific Assessment of Ozone Depletion: 2014, World Meteorological
Organization, Global Ozone Research and Monitoring Project—Report No. 55, 416 pp., Geneva, Switzerland, 2014.

- Zawada, D. J., Dueck, S. R., Rieger, L. A., Bourassa, A. E., Lloyd, N. D., and Degenstein, D. A.: High-resolution and Monte
25 Carlo additions to the SASKTRAN radiative transfer model, *Atmos. Meas. Tech.*, 8, 2609-2623, doi:10.5194/amt-8-2609-
2015, 2015..