

Rainfall retrieval with commercial microwave links in São Paulo, Brazil

Manuel F. Rios Gaona¹, Aart Overeem^{1,2}, Timothy H. Raupach³, Hidde Leijnse², and Remko Uijlenhoet¹

¹Hydrology and Quantitative Water Management Group, Department of Environmental Sciences, Wageningen University, 6708 PB Wageningen, the Netherlands.

²R&D Observations and Data Technology, Royal Netherlands Meteorological Institute, 3731 GA De Bilt, the Netherlands.

³Environmental Remote Sensing Laboratory, École Polytechnique Fédérale de Lausanne, Lausanne, Switzerland.

Correspondence to: Manuel F. Rios Gaona (feliperiosg@gmail.com)

Abstract. In the last decade there has been a growing interest from the hydrometeorological community regarding rainfall estimation from commercial microwave link (CML) networks. Path-averaged rainfall intensities can be retrieved from the signal attenuation between cell phone towers. Although this technique is still in development, it offers great opportunities for the retrieval of rainfall rates at high spatiotemporal resolutions very close to the Earth's surface. Rainfall measurements at high spatiotemporal resolutions are highly valued in urban hydrology, for instance, given the large impact that flash floods exert on society. Flash floods are triggered by intense rainfall events that develop over short time scales.

Here, we present one of the first evaluations of this measurement technique for a subtropical climate. Rainfall estimation for subtropical climates is highly relevant, since many countries with few surface rainfall observations are located in such areas. The test bed of the current study is the Brazilian city of São Paulo. The open-source algorithm RAINLINK was applied to retrieve rainfall intensities from (power) attenuation measurements. The performance of RAINLINK estimates was evaluated for 145 of the 213 CML in the São Paulo metropolitan area for which we received data, for 81 days between October 2014 and January 2015. We evaluated the retrieved rainfall intensities and accumulations from CML against those from a dense automatic gauge network. Results were found to be promising and encouraging when it comes to capturing the city-average rainfall dynamics. Mixed results were obtained for individual CML estimates, which may be related to erroneous metadata.

1 Introduction

Rainfall is the key input in environmental applications such as hydrological modeling, flash-flood and crop growth forecasting, landslide triggering, quantification of fresh water availability, and waterborne disease propagation. Because it is a natural process with a high spatiotemporal variability (Hou et al., 2008; Sene, 2013b), its accurate estimation is a demanding task.

The most common technologies that are currently used to measure rainfall at larger scales are rain gauges, radars and satellites. Each technology presents advantages and drawbacks with regard to the accuracy of rainfall estimates and the spatiotemporal coverage. Rain gauges directly measure the quantity of precipitation that falls on the ground. They offer accurate estimates of rainfall collected at temporal scales from minutes to days. Nevertheless, their rainfall estimates are only representative of their direct vicinity. In addition, in most cases the gauges within a network are unevenly distributed in space. Weather radar (RADIO

Detection And Ranging) offers indirect estimates of rainfall, with horizontal resolutions of ~ 1 km (or even less depending on the radar settings) every ~ 2 to ~ 5 min. They scan distances of ~ 100 – 300 km, which represent an area of $\sim 125,000$ km², if issues of beam blockage are not present. The accuracy of rainfall estimates from radar depends on how well the measurements of backscattered power from hydrometeors are transformed into rain rates. Satellites offer also indirect estimates of rainfall at several spatiotemporal resolutions. For instance, Geostationary Earth Orbit (GEO) satellites (orbiting the Earth at $\sim 36,000$ km) provide observations at resolutions of ~ 10 – 60 min, and 1 – 4 km (Sene, 2013a; Wang, 2013), whereas Low Earth Orbit (LEO) satellites (orbiting the Earth at ~ 800 km) can provide observations at resolutions of ~ 1 km or less. Gridded rainfall products from the Global Precipitation Measurement mission (GPM) offer precipitation estimates between 60°N – 60°S at a spatial resolution of $0.1^\circ \times 0.1^\circ$ every 30 min. The main advantage of satellites above radars and gauges is that they provide global rainfall estimates (oceans included).

Commercial microwave links (CML) represent a technology that in the past decade has gained momentum as an alternative means for rainfall estimation. CML rainfall estimates are more representative of rainfall at the ground surface than those offered by satellites and/or weather radars. Networks of CML are more dense than gauge networks given their worldwide deployment for telecommunication purposes (Overeem et al., 2016b; Kidd et al., 2017). This worldwide spread of CML potentially offers rainfall estimates in places where rain gauges are scarce or poorly maintained, or where ground-based weather radars are not yet deployed or cannot be afforded. The spatiotemporal resolution of rainfall estimates from CML varies from seconds to minutes, and from hundreds of meters to tens of kilometers. For instance, Messer et al. (2012), and Overeem et al. (2016b) use maximum and minimum Received Signal Level (RSL) measurements over 15-min intervals, for CML with (spatial) densities of 0.3 to 3 links per km², and 0.1 to 2.1 km per km², respectively. Messer et al. (2012), and Fencl et al. (2015) provide 1-min rainfall estimates, whereas 1-s retrievals are obtained by Doumounia et al. (2014), and Chwala et al. (2016).

The interaction between attenuation and rainfall has long been studied by the electrical engineering community (from the attenuation perspective), and since the last two and a half decades by the hydrological community (from the rainfall perspective). Hogg (1968), and Crane (1971) review the influence of atmospheric phenomena on mm- and cm-wavelength based satellite communication systems. Later, Hogg and Chu (1975), and Crane (1977) focus exclusively on the role of rainfall in satellite communication, as rainfall is the major source of propagation issues for frequencies above 4 – 10 GHz. Recently, Chakravarty and Maitra (2010), and Badron et al. (2011) study rain-induced attenuation in satellite communication at tropical locations, where the attenuation is severe. Even more recently, Barthès and Mallet (2013), and Mercier et al. (2015) retrieve high-resolution rainfall fields (0.5×0.5 km every 10 sec) from 10.7 - and 12.7 -GHz Earth-space links used in satellite TV transmission, even though at Ku band the estimation of weak rainfall rates is not optimal.

Our main interest here is rainfall estimation from terrestrial links. The idea of rain rate retrieval from attenuation measurements via tomographic techniques is presented by Giuli et al. (1991). Cuccoli et al. (2013), and D’Amico et al. (2016) present reconstructed 2D-rainfall fields from operational ML networks via tomographic techniques. Ruf et al. (1996) use a 35 -GHz dual-polarization link for rainfall estimation at 0.1 – 1 km horizontal resolutions. Holt et al. (2000), Rahimi et al. (2004) and, Upton et al. (2005) estimate path-averaged rainfall from the differential attenuation of dual-frequency links. Minda and Nakamura (2005) use a 50 -GHz link of 820 m to estimate rainfall. At such frequencies (or higher) rainfall estimation is sensitive to

the raindrop size distribution and raindrop temperature. The synergistic use of ML, gauges and radars for rainfall estimation is proposed by Grum et al. (2005), and Bianchi et al. (2013). The first references to rainfall estimates from CML are Messer et al. (2006), and Leijnse et al. (2007). Berne and Uijlenhoet (2007), Leijnse et al. (2010), and Zinevich et al. (2010) study sources of uncertainty in rainfall estimates from CML. Methods for country-wide rainfall fields from CML are developed in Zinevich et al. (2008), and Overeem et al. (2013). Uijlenhoet et al. (2018) give a non-expert summary of the history, theory, challenges, and opportunities toward continental-scale rainfall monitoring via CMLs of cellular communication networks.

In the last decade the use of CML has broadened its spectrum to several other environmental applications beyond rainfall estimation, for instance, melting snow (Upton et al., 2007), water vapour monitoring (David et al., 2009), wind velocity estimation (Messer et al., 2012), dense-fog monitoring (David et al., 2013), urban drainage modelling (Fencl et al., 2013), flash flood early warning in Africa (Hoedjes et al., 2014), and air pollution detection (David and Gao, 2016).

We evaluate the performance of 145 CMLs located in the city of São Paulo, Brazil, in terms of their capacity to retrieve rainfall for the period between 20 October 2014 and 9 January 2015 (~3 months). Rainfall evaluation against data from nearby gauges was coherently possible for 116 links from a network of 213 CMLs. Previously, da Silva Mello et al. (2002) studied the attenuation along ML due to rainfall for São Paulo. They used 6 links (7–43 km) with frequencies between 15 and 18 GHz. Here, we invert the problem by considering the attenuation suffered by such signals to be a valuable source of rainfall information instead of considering rainfall to be a nuisance for the propagation of radio signals. Since CMLs were not intended for rainfall estimation purposes, these devices can be considered a form of opportunistic sensors. They are potentially cost-free as the retrieved rain rates can be regarded as a by-product of power measurements.

As subtropical and tropical regions are the ones most deprived of radar (Heistermann et al., 2013) and gauge networks (Lorenz and Kunstmann, 2012; Kidd et al., 2017), CMLs could serve as complementary (or even alternative) networks for rainfall monitoring. Most of the recent studies concerning rainfall retrieval from CMLs have focused on temperate and Mediterranean climates, e.g., Messer and Sendik (2015); Overeem et al. (2016b). Thus, our evaluation is one of the first which focuses on a subtropical climate, complementing the study of Doumounia et al. (2014), which focused on a semi-arid climate. Focus on accurate rainfall estimation within the subtropics is of high relevance given that in such regions (e.g., São Paulo) intense events develop more often into flash floods and mud slides, which cause damage to property, disruption of business, and occasional casualties (Pereira Filho, 2012).

This paper is organized as follows: Section 2 describes the study area, the datasets (CML, rain gauges, disdrometers), the retrieval algorithm, and the evaluation metrics. The results and related discussion of our major findings are presented alongside in section 3. Summary, conclusions and recommendations are provided in section 4.

2 Study Area, Data and Methods

2.1 Description of Study Area

The city of São Paulo is located ~60 km from the Atlantic Ocean at ~770 masl, where sea breeze fronts commonly push from the SE against prevailing continental NW winds (cold fronts). In general, the incoming sea breeze interacts with the warmer

and drier (urban) heat island of São Paulo, producing very deep convection with heavy rainfall, wind gusts, lightning and hail (Pereira Filho, 2012; Machado et al., 2014; Vemado and Pereira Filho, 2016). de Oliveira et al. (2002) characterize the local climate as typical of subtropical regions of Brazil, with a dry winter (June-August) and a wet summer (December-March). With regard to the climatology of São Paulo¹, February is the warmest month with 22.4° C, and July the coldest with 15.8° C. Climatological averages for temperature and humidity, for November and December (the full two months of the studied period), are 20.2 and 21.1°C, and 78% and 80%, respectively. August is the driest month with 39.6 mm of precipitation, and January the wettest with 237.4 mm, on average. The (climatological) yearly accumulated rainfall is 1,441 mm. Overeem et al. (2016b) report winter time issues in rainfall estimates from CML, i.e. solid and melting precipitation. However, for the subtropical climate of São Paulo, such winter issues are not expected to play a role, which is advantageous for accurate rainfall estimation.

2.2 Data

We received power measurements from two brands of CML: Ericsson (ER) and Huawei (HU). Power levels were registered every 15 min from 01:00 UTC 20 October 2014 to 00:45 UTC 8 January 2015, i.e., 81 days exactly. Their quantization level was 0.1 dB. Minimum and maximum levels of received and transmitted power were available for 66 HU CMLs, whereas only minimum received powers were available for ER 147 CMLs. The ER CMLs are assumed to have constant transmitted power levels. Figure 1 shows the location of these CMLs.

Figure 2 shows the scatter plot of link frequency against link length for all CMLs. In Fig. 2 the CMLs with uncommon or dubious (dub) combinations of length and frequency are denoted by gray markers (grey paths in Fig. 1). Our experience tells us that CMLs with both lengths above 20 km and frequencies above 15 GHz are not common in CML networks (they are highly unlikely from a network design perspective: long links experience more attenuation in rain, and should hence operate at low frequencies to limit this attenuation). The group of markers in the left bottom corner of Fig. 2 is also considered as dubious. Nevertheless, some CMLs around 7 GHz, having link lengths above 10 km, could still be realistic. We decided to only use the group of CMLs with path lengths shorter than 20 km and microwave frequencies above 15 GHz. Hence, 91 ER CMLs (40 link paths) and 54 HU CMLs (55 link paths) are left for the analyses, i.e., 145 CMLs in total (95 link paths). For RAINLINK to work, it is necessary that the power level of the transmitted signal is essentially constant.

Rainfall depths from 152 stations were retrieved from the National Early Warning and Monitoring Centre of Natural Disasters (CEMADEN), Brazil². These 152 stations offer 10-min rainfall depths for the period and region under study (Fig. 1). A gauge validation procedure was necessary due to availability issues and doubts about the quality of the rainfall observations from the CEMADEN gauge network. The validation procedure is as follows: 1) For every gauge (152 in total) the closest two gauges were selected for comparison; 2) For the entire period, 30-min rainfall pairs (dry periods included) were evaluated through the relative bias and the coefficient of correlation for both closest gauges; 3) If the metrics of at least one of the two

¹The climatological data presented here cover the period from 1961 to 1990 and correspond to the station “Mir. de Santana” located in the heart of São Paulo city (−46.6 lon, −23.5 lat, 792 masl). These data are freely available at the INMET (METeorological National Institute) web portal: <http://www.inmet.gov.br/portal/index.php?r=home2/index>.

²Gauge data from Brazil is freely available at <http://www.cemaden.gov.br/mapainterativo/>.

closest gauges are within $\pm 25\%$ for the relative bias, and ≥ 0.6 for the correlation coefficient, the gauge under evaluation was deemed reliable. This selection results in 96 valid gauges out of 152. Comparisons of city-average rainfall were carried out among data from valid (96), and all (152) gauges, and all (145) CMLs (Fig. 4). For comparisons of individual path-averaged estimates of CMLs against gauges, only gauges within 1 or 9 km from the evaluated link paths were selected. For the 1-km case 35 CMLs were compared against 20 gauges, whereas for the 9-km case 116 CMLs were compared against 87 gauges.

Thanks to the CHUVA project (Machado et al., 2014), we retrieved 1-min drop size distributions (DSD) from three Parsivel disdrometers located in the region “Vale do Pariba”, ~ 93 km east of the study area³. These DSD data were collected from 1 November 2011 to 14 March 2012.

2.3 Rainfall Retrieval Algorithm

Rainfall estimation from CMLs is based on power measurements from the electromagnetic signal along a link path, i.e., between transmitter and receiver. Rainfall rates can be retrieved from the decrease in power, which is largely due to the attenuation of the electromagnetic signal by raindrops along the link path. The power-law relation between attenuation and rainfall (along a link path) was established by Atlas and Ulbrich (1977), and Olsen et al. (1978) as:

$$k = aR^b, \tag{1}$$

where k is the specific attenuation [$\text{dB}\cdot\text{km}^{-1}$] along the link path attributed to rainfall and R is the rainfall rate [$\text{mm}\cdot\text{h}^{-1}$]. The coefficient a and exponent b depend on the frequency and polarization of the electromagnetic signal, the DSD, and (to a much lesser extent) on the raindrop temperature. In the frequencies at which CML commonly operate, the exponent b in Eq. (1) is ~ 1.0 . Atlas and Ulbrich (1977) state that the near-linearity between rain rates and specific attenuation (in the 20–40 GHz band) “makes it possible to use the total path loss as a direct measure of \bar{R} [average rain rate] independent of the form of the distribution of R [rain rate] along the path”.

Both the degree to which Eq. (1) holds and the values of a and b are determined by the DSD. In order to study how strongly this relation deviates from other relations found in the literature, we determine values of a and b based on measured DSDs from the São Paulo region. For each 1-min DSD, we compute the corresponding rainfall intensity and specific attenuation of the common frequencies in São Paulo, i.e., from 8 to 23 GHz. Specific attenuation is computed for vertically polarized signals (most CML operate using this polarization) using T-Matrix scattering computations (e.g. Mishchenko, 2000), assuming raindrop oblateness as a function of its volume-equivalent diameter given by Andsager et al. (1999), and an average raindrop temperature of 298.36 K. The values of a and b are subsequently determined in log–log space (orthogonal regression) by a linear fit of $R = ak^b$ to the computed values of R and k . Note that conversely to Eq. (1) $\log(R)$ is the dependent variable in this case.

³DSD data from Parsivel and other disdrometers for the region of São Paulo (and other regions across Brazil) are freely available at <http://chuvaproject.cptec.inpe.br/soschuva/>

Figure 3 shows the power-law relations of 3 microwave frequencies (8, 15, and 23 GHz). This figure also shows the power-law relations derived for rainfall in the Netherlands (Leijnse, 2007, p. 65), and those recommended by the International Telecommunication Union (ITU-R Recommendation P.838-3). It is clear from this figure that there certainly are differences, and that such differences are largest for 8 GHz at high rainfall intensities. For the higher frequencies, such differences are more limited, especially at high rainfall intensities. This is in line with what has been found earlier (e.g. Berne and Uijlenhoet, 2007; Leijnse et al., 2008, 2010).

RAINLINK (Overeem et al., 2016a) is an R package (R Core Team, 2017) in which rain rates and area-wide rainfall maps can be derived from CML attenuation measurements. A very brief description of the algorithm is as follows: 1) wet-dry classification – a link is considered for non-zero rainfall retrievals if the received power jointly decreases with that of nearby links (9-km radius for this study); 2) reference signal level estimation – the median signal level of all dry periods in the previous 24 h is considered as the representative level of dry weather; 3) outlier removal – exclusion of links for which the specific attenuation (accumulated over 24 h) deviates too much from that of nearby links; 4) rainfall retrievals – once attenuation estimates are obtained from the difference between RSL and the reference signal level, a fixed wet antenna attenuation correction is applied (2.3 dB), and subsequently 15-min average rainfall intensities are computed from a weighted average of minimum and maximum rainfall intensities obtained by the (inverse) power law of Eq. (1); and 5) rainfall maps – rainfall intensities are interpolated into rainfall maps through Ordinary Kriging. This latter step was not implemented in this study. Overeem et al. (2016a) give a more detailed and in-depth review and description about all the technicalities within the RAINLINK package.

The ER CMLs only provide minimum power levels. RAINLINK is designed to retrieve rain rates from minimum and maximum power levels. Thus, in order for RAINLINK to compute mean rainfall estimates only from minimum power levels, two steps extra are required: 1) in the input file(s) for RAINLINK, the column with maximum power levels has to receive the values of the column with minimum power levels; 2) the mean path-averaged rainfall intensity, i.e. the output from RAINLINK, is now a maximum rainfall intensity and needs to be multiplied by a conversion factor to obtain the actual mean intensity. This conversion factor needs to be determined by means of a calibration dataset. Here, we use the 1-min rainfall intensities from the three disdrometers from the region of São Paulo to obtain an estimate of such a conversion factor. For each 15-min interval, the minimum rainfall intensity is selected from the lowest intensity of the 15 1-min intensities. 0.38 was found as the conversion factor, by comparing this minimum rainfall intensity against the mean 15-min rainfall intensity from the same disdrometers. ER-CML maximum rainfall intensities are then multiplied by this factor to obtain (actual) mean rainfall intensities.

The 1-min rainfall intensities from the three disdrometers from the region of São Paulo are also employed to estimate the value of α used to convert the minimum and maximum rainfall intensities from the HU CMLs to mean 15-min intensities. The found value, 0.30, is close to the default one in RAINLINK, 0.33, based on Dutch data and used in this study. This confirms the usefulness of the default value of α for application in a subtropical climate.

2.4 Error and Uncertainty Metrics

We evaluated the rainfall estimates from RAINLINK through: 1) the relative bias, 2) the coefficient of variation (CV), and 3) the coefficient of determination (r^2).

For a given CML (dataset), the relative bias is a relative measure of the average error between the RAINLINK estimates $R_{\text{RAINLINK},i}$ and the rain gauge measurements $R_{\text{gauge},i}$ (the latter considered as the ground truth):

$$\text{relative bias} = \frac{\overline{R_{\text{res}}}}{\overline{R_{\text{gauge}}}} = \frac{\sum_{i=1}^n R_{\text{res},i}}{\sum_{i=1}^n R_{\text{gauge},i}}, \quad (2)$$

where $R_{\text{res},i} = R_{\text{RAINLINK},i} - R_{\text{gauge},i}$ and n represents all possible time steps for the period under consideration. $R_{\text{res},i}$ are the residuals, i.e., the difference between $R_{\text{RAINLINK},i}$ and $R_{\text{gauge},i}$. $\overline{R_{\text{res}}}$ and $\overline{R_{\text{gauge}}}$ are the average of the residuals and gauge rainfall measurements (in mm), respectively. The relative bias ranges from -1 to $+\infty$, where 0 represents unbiased rainfall estimates.

The coefficient of variation is a dimensionless measure of dispersion (Haan, 1977), defined in this case as the standard deviation of the residuals $\sqrt{\widehat{\text{Var}}(R_{\text{res}})}$ divided by the mean of the rain gauge measurements, for the evaluated CML:

$$\text{CV} = \frac{\sqrt{\widehat{\text{Var}}(R_{\text{res}})}}{\overline{R_{\text{gauge}}}}. \quad (3)$$

The CV is a measure of uncertainty. It ranges from 0 (a hypothetical case with no uncertainty) to ∞ .

The coefficient of determination is a measure of the strength of the linear dependence between two random variables, RAINLINK estimates and rain gauge measurements in this case. It is defined as the square of the correlation coefficient between $R_{\text{RAINLINK},i}$ and $R_{\text{gauge},i}$:

$$r^2 = \frac{\widehat{\text{Cov}}^2(R_{\text{gauge}}, R_{\text{RAINLINK}})}{\widehat{\text{Var}}(R_{\text{gauge}}) \cdot \widehat{\text{Var}}(R_{\text{RAINLINK}})}, \quad (4)$$

where $\widehat{\text{Var}}(R_{\text{gauge}})$ and $\widehat{\text{Var}}(R_{\text{RAINLINK}})$ are the variance of rain gauge measurements and RAINLINK estimates, respectively; and $\widehat{\text{Cov}}^2(R_{\text{gauge}}, R_{\text{RAINLINK}})$ the squared covariance between these two variables. r^2 ranges from 0 to 1, this latter the case of perfect linear correlation, i.e., all data points would fall on a straight line without any scatter. Perfect linearity does not imply unbiased estimates because the regression line does not have to coincide with the 1:1 line, even if it captures all variability.

The metrics were systematically computed on 30-min paired rainfall depths, using either all rainfall pairs or only pairs where both CML and gauge depths are above 0.0 mm. The latter to account only for significant rainfall events. 30-min aggregation was necessary given the temporal resolutions of the datasets, i.e., 10 min for gauge and 15 min for CML-retrieved data.

3 Results and Discussion

3.1 City-average Rainfall

For each dataset we compute the cumulative city-average rainfall for the studied period (Fig. 4). According to the reference, i.e., the 96 valid gauges, the cumulative rainfall depth in this ~ 3 -month period is ~ 600 mm. The differences in cumulative rainfall

depths between the valid and all (152) rain gauges are small. Such a small difference suggests that the gauge dataset is reliable. For the “PreProcessed” CML dataset no wet-dry classification and no outlier filter are applied. This contributes to cumulative rainfall depths being roughly twice as large as the gauge-based ones. Moreover, the dynamics do not often correspond with that of the gauges, for instance around 1 December 2014. For the “OutFiltered” dataset of 145 CMLs, which includes a wet-dry classification and outlier filter, a much better correspondence is found. The dynamics of the cumulative series agree reasonably well, and an overall underestimation is found, ~ 200 mm at the end of the period, albeit much smaller than the difference between the “PreProcessed” dataset and the reference. The separate performance of the HU and ER CMLs shows that the HU dataset performs quite well with some overestimation, whereas the ER dataset gives a huge underestimation, despite roughly capturing the rainfall dynamics.

10 3.2 Evaluation of 30-min Rainfall

For the studied period, we evaluate the quality of 30-min path-averaged rainfall estimates from individual CMLs against gauges by: 1) time series from rainfall events for the three best performing CMLs; 2) scatter density plots based on data from all CMLs; and 3) metrics for each CML.

Figure 5 shows minimum and maximum received powers and the derived CML rainfall rates at 15-min resolution, as well as the rain rates from the nearest gauge (< 1 km) at 10-min resolution. The upscaled 30-min rainfall rates from both CML and gauges are also shown in Fig. 5. It can be seen that the minimum and maximum received powers are strongly negatively correlated with the gauge rainfall rates. The figure shows that these three CMLs capture reasonably well two of the rainiest events of the studied period. One can see that the stronger the rainfall event is, the larger is the attenuation registered by the CMLs.

Uncertainties in gauge and attenuation measurements themselves are the two sources of error that mainly constrain our evaluation. Our work compares CML rainfall estimates against rain gauge measurements, which are considered here as the “ground truth”. Nonetheless, a gauge is only representative of its surrounding area and does not account for the spatial variability of rainfall along the link path. Representativeness errors will increase for longer link paths and for more intense rainfall events. For subtropical regions where intense rainfall is associated with small convective raincells, da Silva Mello et al. (2014) showed that due to smaller raincells only a part of the link-path contributes to the attenuation, which causes an effective link-rain rate smaller than the one(s) measured by gauges.

The results of Fig. 5 are obtained for short links (< 1.7 km), where representativeness errors will play a smaller role. Overestimations by CMLs may be related to the fact that rain-induced attenuation along the link path may be relatively small compared to the attenuation caused by wet antennas, i.e., the wet antennas could contribute to some of the overestimations.

Figure 6 shows an overall assessment of the CML performance to retrieve 30-min rainfall depths (over the studied period). Scatter density plots are for CML-gauge pairs within 1 km (top panels, a and b) and within 9 km (bottom panels, c and d). The left column (panels a and c) is for all CML-gauge pairs, whereas the right column (panels b and d) only includes rainy intervals, i.e., CML-gauge pairs where both rainfall depths are above 0.0 mm. The rainfall estimates for CML-gauge pairs within 1 km are somewhat better than the ones for 9 km in terms of r^2 and CV, but the relative bias of the latter is smaller than that of

the former. If all CML-gauge pairs are used, on average CMLs underestimate rainfall by 23 – 29%, with high values for CV and low values for r^2 . Assuming that the gauges provide reliable measurements, this performance indicates that the applied wet-dry classification could be sub-optimal. Perhaps a sensitivity analysis of the threshold values in the wet-dry classification could improve this classification. If only rainy intervals are used, i.e., CML-gauge pairs both above 0.0 mm, these lead to a strong reduction in the value of CV, a decrease in the r^2 , and a much smaller relative bias.

A reason for the large discrepancies among the statistics of the scatter density plots (Fig. 6) could be the fact that only minimum (and also maximum for HU CMLs) RSL data is used to compute 15-min rainfall intensities, i.e., a limited temporal sampling. Rios Gaona et al. (2015) compare CML (actual) and gauge-adjusted (simulated) path-average rainfall depths for a 12-day dataset from the Netherlands, based on rainfall pairs for which at least one depth exceeds 0.1 mm. The most prominent difference is their much higher value for r^2 (0.437), which was found for 15-min rainfall. Hence, the sampling strategy is not necessarily the main reason for the low values of r^2 . Given the erroneous metadata found in the CML dataset (Sec. 2.2), which led to discarding CMLs with dubious combinations of path length and frequency, there could be errors in the metadata from selected CMLs too, i.e, wrong location of one of the antennas or wrong frequency. In addition, although a basic assessment of gauge quality has been performed, even records from gauges classified as valid could still contain measurement errors.

The presented results are based on the $R-k$ relation derived from São Paulo data, which is representative for the local rainfall climatology. The results (not shown here) for the different $R-k$ relations are quite similar (Sec. 2.3), which indicates that differences in DSD climatologies play a smaller role. In general, local parameters (i.e., SP) are the best approach for RAINLINK. Nevertheless, the RAINLINK default parameters offer (subtropical, São Paulo) CML estimates of reasonable quality despite the local (temperate) climate for which they were obtained, namely the Netherlands. The ITU parameters often lead to a much higher value of CV, and always to a larger overestimation.

Figure 7 shows the performance of individual CMLs by plotting the values of CV against r^2 , based on CML-gauge pairs both above 0.0 mm (for the studied period). Many CMLs have fairly high values of r^2 . For instance, 43% of the CMLs have a value of r^2 larger than 0.5 (for CML-gauge pairs within 9 km). Here, CML and gauge measurements are totally independent. Thus, it is very likely that the high values of r^2 for a large minority of CMLs indicate that both types of observations contain a true rain signal.

4 Summary, Conclusions and Recommendations

CML networks are an opportunistic technique for rainfall estimation, with the potential to be used worldwide given the spread of CML-based telecommunication systems during the last two decades. Here we presented one of the first evaluations of CML rainfall retrievals for a subtropical climate. Subtropical regions could benefit from this technique given that rainfall events are often more extreme, and usually fewer surface rainfall measurements are collected. We evaluated rainfall retrievals from power measurements for 145 CML from a network located in the city of São Paulo. We used RAINLINK (Overeem et al., 2016a) to retrieve rainfall from these CML.

30-min rainfall estimates from CMLs were evaluated against rainfall measurements from rain gauges for the period from 20 October 2014 to 9 January 2015. Despite the mixed results, the potential of CML technology for rainfall estimation in subtropical climates is confirmed. Especially, given the rainfall dynamics captured by the city-average rainfall (Fig. 4), the good performance of some individual CMLs (Fig. 5), and a high correlation for a large minority of CMLs (Fig. 7). This gives
5 an indication that the RAINLINK package is suitable to retrieve rainfall via CML data from a subtropical climate, even though many of its parameters have not been optimized for such a climate. Since biases propagate in hydrological model predictions, given the low relative bias found for rainy periods (Fig. 6), CML rainfall estimates could be considered as an alternative input in hydrological models.

In order for RAINLINK to capture the rainfall characteristics from the region of São Paulo, we derived a - b coefficients of
10 power-law R - k relations from local DSD data. The a and b coefficients are a function of the polarization and frequency of the link, DSD and raindrop temperature. These local DSD parameters gave the best results, whereas the ITU/NL parameters proved to be very useful and accurate enough when local a - b coefficients cannot be derived. The NL parameters are characteristic for the hydroclimatology of the Netherlands, and are the default set in RAINLINK. They also outperform the ITU parameters.

A more thorough evaluation could be done to study and explain differences between CML and gauge rainfall estimates. For
15 instance, the influence of rainfall variability along link paths could be studied. This can be achieved if local radar measurements are compared against CML estimates, which would allow to better track the rain events and their incidence over the link paths, especially relevant for longer link paths. We did not evaluate the performance of CML-RAINLINK retrievals based on rain rate classes. Nevertheless, this evaluation is highly encouraged as it would shed some light on the suitability of CMLs for hydrological applications, for instance.

We also encourage future work on sensitivity analyses focused on the optimization of RAINLINK parameters to improve
20 the accuracy of rainfall estimates in subtropical regions. Note that the value of α , estimated from local 1-minute disdrometer rainfall intensities, was close to the default value from RAINLINK. Especially the value of A_a and the threshold values for the wet-dry classification and the outlier filter should be investigated. Missing maximum signal level data, and unexpected combinations of link lengths and microwave frequencies, forced us to remove many CMLs from the original dataset. This
25 shows that accurate metadata, such as link coordinates for instance, are essential, as well as the feedback about obtained CML and reference datasets.

CMLs are not the replacement of current standard technologies such as radars, rain gauges (and even satellites), but their
30 opportunistic use is rather valuable as complementary networks for high-resolution rainfall estimation. To conclude, we were able to obtain good results for a minority of CMLs, which confirms the great potential of this technique if the data and metadata are properly stored.

Author contributions. M.F. Rios Gaona sorted, analysed and plotted the data, and wrote most of the paper. T. Raupach processed the Parsivel DSD data. A. Overeem, H. Leijnse, and R. Uijlenhoet analysed the results, gave valuable feedback, and wrote parts of the paper.

Competing interests. The authors manifest not to have competing interests with the Planetary Skin Institute / Italia Mobile, which provided us the CML data.

Acknowledgements. We thank Juan Carlos Castilla-Rubio (from Planetary Skin Institute); the Brazilian Ministry of Science, Technology and Innovation; and Italia Mobile for providing the CML data. This work was financially supported by The Netherlands Organisation for Scientific Research NWO (project ALW-GO-AO/11-15).

References

- Andsager, K., Beard, K. V., and Laird, N. F.: Laboratory Measurements of Axis Ratios for Large Raindrops, *J Atmos Sci*, 56, 2673–2683, [https://doi.org/10.1175/1520-0469\(1999\)056<2673:LMOARF>2.0.CO;2](https://doi.org/10.1175/1520-0469(1999)056<2673:LMOARF>2.0.CO;2), 1999.
- Atlas, D. and Ulbrich, C. W.: Path- and Area-Integrated Rainfall Measurement by Microwave Attenuation in the 1–3 cm Band, *J Appl Meteorol*, 16, 1322–1331, [https://doi.org/10.1175/1520-0450\(1977\)016<1322:PAAIRM>2.0.CO;2](https://doi.org/10.1175/1520-0450(1977)016<1322:PAAIRM>2.0.CO;2), 1977.
- Badron, K., Ismail, A. F., Din, J., and Tharek, A.: Rain induced attenuation studies for V-band satellite communication in tropical region, *J Atmos Sol-terr Phy*, 73, 601–610, <https://doi.org/10.1016/j.jastp.2010.12.006>, 2011.
- Barthès, L. and Mallet, C.: Rainfall measurement from the opportunistic use of an Earth–space link in the Ku band, *Atmos Meas Tech*, 6, 2181–2193, <https://doi.org/10.5194/amt-6-2181-2013>, 2013.
- Berne, A. and Uijlenhoet, R.: Path-averaged rainfall estimation using microwave links: Uncertainty due to spatial rainfall variability, *Geophys Res Lett*, 34, <https://doi.org/10.1029/2007GL029409>, 2007.
- Bianchi, B., Jan van Leeuwen, P., Hogan, R. J., and Berne, A.: A Variational Approach to Retrieve Rain Rate by Combining Information from Rain Gauges, Radars, and Microwave Links, *J Hydrometeorol*, 14, 1897–1909, <https://doi.org/10.1175/JHM-D-12-094.1>, 2013.
- Chakravarty, K. and Maitra, A.: Rain attenuation studies over an earth–space path at a tropical location, *J Atmos Sol-terr Phy*, 72, 135–138, <https://doi.org/10.1016/j.jastp.2009.10.018>, 2010.
- Chwala, C., Keis, F., and Kunstmann, H.: Real-time data acquisition of commercial microwave link networks for hydrometeorological applications, *Atmos Meas Tech*, 9, 991–999, <https://doi.org/10.5194/amt-9-991-2016>, 2016.
- Crane, R. K.: Propagation phenomena affecting satellite communication systems operating in the centimeter and millimeter wavelength bands, *P IEEE*, 59, 173–188, <https://doi.org/10.1109/PROC.1971.8123>, 1971.
- Crane, R. K.: Prediction of the Effects of Rain on Satellite Communication Systems, *P IEEE*, 65, 456–474, <https://doi.org/10.1109/PROC.1977.10498>, 1977.
- Cuccoli, F., Baldini, L., Facheris, L., Gori, S., and Gorgucci, E.: Tomography applied to radiobase network for real time estimation of the rainfall rate fields, *Atmos Res*, 119, 62–69, <https://doi.org/10.1016/j.atmosres.2011.06.024>, 2013.
- da Silva Mello, L., Pontes, M. S., Fagundes, I., Almeida, M. P. C., and Andrade, F. J. A.: Modified rain attenuation prediction method considering the effect of wind direction, *J Microw Optoelectron Electromagn Appl*, 13, 254–267, <https://doi.org/10.1590/S2179-10742014000200012>, 2014.
- da Silva Mello, L. A. R., Costa, E., and de Souza, R. S. L.: Rain attenuation measurements at 15 and 18 GHz, *Electron Lett*, 38, 197–198, <https://doi.org/10.1049/el:20020105>, 2002.
- D’Amico, M., Manzoni, A., and Solazzi, G. L.: Use of Operational Microwave Link Measurements for the Tomographic Reconstruction of 2-D Maps of Accumulated Rainfall, *IEEE Geosci Remote Sens Lett*, 13, 1827–1831, <https://doi.org/10.1109/LGRS.2016.2614326>, 2016.
- David, N. and Gao, H. O.: Using Cellular Communication Networks To Detect Air Pollution, *Environ Sci Technol*, 50, 9442–9451, <https://doi.org/10.1021/acs.est.6b00681>, 2016.
- David, N., Alpert, P., and Messer, H.: Technical Note: Novel method for water vapour monitoring using wireless communication networks measurements, *Atmos Chem Phys*, 9, 2413–2418, <https://doi.org/10.5194/acp-9-2413-2009>, 2009.
- David, N., Alpert, P., and Messer, H.: The potential of commercial microwave networks to monitor dense fog–feasibility study, *J Geophys Res*, 118, 11,750–11,761, <https://doi.org/10.1002/2013JD020346>, 2013.

- de Oliveira, A. P., Machado, A. J., Escobedo, J. F., and Soares, J.: Diurnal evolution of solar radiation at the surface in the city of São Paulo: seasonal variation and modeling, *Theor Appl Climatol*, 71, 231–249, <https://doi.org/10.1007/s007040200007>, 2002.
- Doumounia, A., Gosset, M., Cazenave, F., Kacou, M., and Zougmore, F.: Rainfall monitoring based on microwave links from cellular telecommunication networks: First results from a West African test bed, *Geophys Res Lett*, 41, 6016–6022, <https://doi.org/10.1002/2014GL060724>, 2014.
- Fencl, M., Rieckermann, J., Schleiss, M., Stránský, D., and Bareš, V.: Assessing the potential of using telecommunication microwave links in urban drainage modelling, *Water Sci Technol*, 68, 1810–1818, <https://doi.org/10.2166/wst.2013.429>, 2013.
- Fencl, M., Rieckermann, J., Sýkora, P., Stránský, D., and Bareš, V.: Commercial microwave links instead of rain gauges: fiction or reality?, *Water Sci Technol*, 71, 31–37, <https://doi.org/10.2166/wst.2014.466>, 2015.
- Giuli, D., Toccafondi, A., Gentili, G. B., and Freni, A.: Tomographic Reconstruction of Rainfall Fields through Microwave Attenuation Measurements, *J Appl Meteorol*, 30, 1323–1340, [https://doi.org/10.1175/1520-0450\(1991\)030<1323:TRORFT>2.0.CO;2](https://doi.org/10.1175/1520-0450(1991)030<1323:TRORFT>2.0.CO;2), 1991.
- Google Maps: São Paulo, SP, <http://maps.googleapis.com/maps/api/staticmap?center=-23.513238,-46.632861&zoom=10&size=640x640&scale=2&mapttype=terrain&style=feature:roadlelement:allvisibility:off&style=feature:administrative%7Celement:labels%7Cvisibility:off&style=feature:poi.park%7Celement:all%7Cvisibility:off&sensor=false>, (accessed Aug 5, 2017), 2017.
- Grum, M., Kraemer, S., Verworn, H.-R., and Redder, A.: Combined use of point rain gauges, radar, microwave link and level measurements in urban hydrological modelling, *Atmos Res*, 77, 313–321, <https://doi.org/10.1016/j.atmosres.2004.10.013>, 2005.
- Haan, C. T.: *Statistical Methods in Hydrology*, Iowa State University Press, Ames, USA, 1st edn., ISBN 8-8138-1510-X, 1977.
- Heistermann, M., Jacobi, S., and Pfaff, T.: Technical Note: An open source library for processing weather radar data (wradlib), *Hydrol Earth Syst Sci*, 17, 863–871, <https://doi.org/10.5194/hess-17-863-2013>, 2013.
- Hoedjes, J. C. B., Kooiman, A., Maathuis, B. H. P., Said, M. Y., Becht, R., Limo, A., Mumo, M., Nduhiu-Mathenge, J., Shaka, A., and Su, B.: A Conceptual Flash Flood Early Warning System for Africa, Based on Terrestrial Microwave Links and Flash Flood Guidance, *ISPRS Int J Geo-Inf*, 3, 584–598, <https://doi.org/10.3390/ijgi3020584>, 2014.
- Hogg, D. C.: Millimeter-Wave Communication through the Atmosphere, *Science*, 159, pp. 39–46, <http://www.jstor.org/stable/1723412>, 1968.
- Hogg, D. C. and Chu, T.-S.: The role of rain in satellite communications, *P IEEE*, 63, 1308–1331, <https://doi.org/10.1109/PROC.1975.9940>, 1975.
- Holt, A. R., Goddard, J. W. F., Upton, G. J. G., Willis, M. J., Rahimi, A. R., Baxter, P. D., and Collier, C. G.: Measurement of rainfall by dual-wavelength microwave attenuation, *Electron Lett*, 36, 2099–2101, <https://doi.org/10.1049/el:20001468>, 2000.
- Hou, A. Y., Skofronick-Jackson, G., Kummerow, C. D., and Shepherd, J. M.: *Precipitation: Advances in Measurement, Estimation and Prediction*, chap. Global precipitation measurement, pp. 131–169, Springer Berlin Heidelberg, Berlin, Heidelberg, https://doi.org/10.1007/978-3-540-77655-0_6, 2008.
- Kidd, C., Becker, A., Huffman, G. J., Muller, C. L., Joe, P., Skofronick-Jackson, G., and Kirschbaum, D. B.: So, How Much of the Earth's Surface Is Covered by Rain Gauges?, *Bull Amer Meteor Soc*, 98, 69–78, <https://doi.org/10.1175/BAMS-D-14-00283.1>, <http://dx.doi.org/10.1175/BAMS-D-14-00283.1>, 2017.
- Leijnse, H.: *Hydrometeorological application of microwave links : measurement of evaporation and precipitation*, Ph.D. thesis, Wageningen, the Netherlands, <http://edepot.wur.nl/121940>, Wageningen University thesis nr. 4353, 2007.
- Leijnse, H., Uijlenhoet, R., and Stricker, J. N. M.: Rainfall measurement using radio links from cellular communication networks, *Water Resour Res*, 43, WR005631, <https://doi.org/10.1029/2006WR005631>, 2007.

- Leijnse, H., Uijlenhoet, R., and Stricker, J.: Microwave link rainfall estimation: Effects of link length and frequency, temporal sampling, power resolution, and wet antenna attenuation, *Adv Water Resour*, 31, 1481–1493, <https://doi.org/10.1016/j.advwatres.2008.03.004>, 2008.
- Leijnse, H., Uijlenhoet, R., and Berne, A.: Errors and Uncertainties in Microwave Link Rainfall Estimation Explored Using Drop Size Measurements and High-Resolution Radar Data, *J Hydrometeor*, 11, 1330–1344, <https://doi.org/10.1175/2010JHM1243.1>, 2010.
- 5 Lorenz, C. and Kunstmann, H.: The Hydrological Cycle in Three State-of-the-Art Reanalyses: Intercomparison and Performance Analysis, *J Hydrometeor*, 13, 1397–1420, <https://doi.org/10.1175/JHM-D-11-088.1>, 2012.
- Machado, L. A. T., Silva Dias, M. A. F., Morales, C., Fisch, G., Vila, D., Albrecht, R., Goodman, S. J., Calheiros, A. J. P., Biscaro, T., Kummerow, C., Cohen, J., Fitzjarrald, D., Nascimento, E. L., Sakamoto, M. S., Cunningham, C., Chaboureau, J.-P., Petersen, W. A., Adams, D. K., Baldini, L., Angelis, C. F., Sapucci, L. F., Salio, P., Barbosa, H. M. J., Landulfo, E., Souza, R. A. F., Blakeslee, R. J., Bailey, J., Freitas, S., Lima, W. F. A., and Tokay, A.: The Chuva Project: How Does Convection Vary across Brazil?, *Bull Amer Meteor Soc*, 95, 1365–1380, <https://doi.org/10.1175/BAMS-D-13-00084.1>, 2014.
- 10 Mercier, F., Barthès, L., and Mallet, C.: Estimation of Finescale Rainfall Fields Using Broadcast TV Satellite Links and a 4DVAR Assimilation Method, *J Atmos Oceanic Technol*, 32, 1709–1728, <https://doi.org/10.1175/JTECH-D-14-00125.1>, 2015.
- Messer, H. and Sendik, O.: A New Approach to Precipitation Monitoring: A critical survey of existing technologies and challenges, *IEEE Signal Proc Mag*, 32, 110–122, <https://doi.org/10.1109/MSP.2014.2309705>, 2015.
- 15 Messer, H., Zinevich, A., and Alpert, P.: Environmental Monitoring by Wireless Communication Networks, *Science*, 312, 713, <https://doi.org/10.1126/science.1120034>, 2006.
- Messer, H., Zinevich, A., and Alpert, P.: Environmental sensor networks using existing wireless communication systems for rainfall and wind velocity measurements, *IEEE Instru Meas Mag*, 15, 32–38, <https://doi.org/10.1109/MIM.2012.6174577>, 2012.
- 20 Minda, H. and Nakamura, K.: High Temporal Resolution Path–Average Rain Gauge with 50–GHz Band Microwave, *J Atmos Oceanic Technol*, 22, 165–179, <https://doi.org/10.1175/JTECH-1683.1>, 2005.
- Mishchenko, M. I.: Calculation of the amplitude matrix for a nonspherical particle in a fixed orientation, *Appl Opt*, 39, 1026–1031, <https://doi.org/10.1364/AO.39.001026>, <http://ao.osa.org/abstract.cfm?URI=ao-39-6-1026>, 2000.
- Olsen, R., Rogers, D., and Hodge, D.: The aR^b Relation in the Calculation of Rain Attenuation, *IEEE T Antenn Propag*, 26, 318–329, <https://doi.org/10.1109/TAP.1978.1141845>, 1978.
- 25 Overeem, A., Leijnse, H., and Uijlenhoet, R.: Country-wide rainfall maps from cellular communication networks, *P Natl Acad Sci Usa*, 110, 2741–2745, <https://doi.org/10.1073/pnas.1217961110>, 2013.
- Overeem, A., Leijnse, H., and Uijlenhoet, R.: Retrieval algorithm for rainfall mapping from microwave links in a cellular communication network, *Atmos Meas Tech*, 9, 2425–2444, <https://doi.org/10.5194/amt-9-2425-2016>, 2016a.
- 30 Overeem, A., Leijnse, H., and Uijlenhoet, R.: Two and a half years of country-wide rainfall maps using radio links from commercial cellular telecommunication networks, *Water Resour Res*, 52, 8039–8065, <https://doi.org/10.1002/2016WR019412>, 2016b.
- Pereira Filho, A. J.: A mobile X-POL weather radar for hydrometeorological applications in the metropolitan area of São Paulo, Brazil, *Geosci Instrum Method Data Syst*, 1, 169–183, <https://doi.org/10.5194/gi-1-169-2012>, 2012.
- R Core Team: R: A Language and Environment for Statistical Computing, R Foundation for Statistical Computing, Vienna, Austria, <https://www.R-project.org/>, 2017.
- 35 Rahimi, A., Upton, G., and Holt, A.: Dual–frequency links—a complement to gauges and radar for the measurement of rain, *J Hydrol*, 288, 3–12, <https://doi.org/10.1016/j.jhydrol.2003.11.008>, 2004.

- Rios Gaona, M. F., Overeem, A., Leijnse, H., and Uijlenhoet, R.: Measurement and interpolation uncertainties in rainfall maps from cellular communication networks, *Hydrol Earth Syst Sci*, 19, 3571–3584, <https://doi.org/10.5194/hess-19-3571-2015>, 2015.
- Ruf, C. S., Aydin, K., Mathur, S., and Bobak, J. P.: 35–GHz Dual–Polarization Propagation Link for Rain–Rate Estimation, *J Atmos Oceanic Technol*, 13, 419–425, [https://doi.org/10.1175/1520-0426\(1996\)013<0419:GDPPLF>2.0.CO;2](https://doi.org/10.1175/1520-0426(1996)013<0419:GDPPLF>2.0.CO;2), 1996.
- 5 Sene, K.: Flash Floods: Forecasting and Warning, chap. Precipitation Measurement, pp. 33–70, Springer Netherlands, Dordrecht, https://doi.org/10.1007/978-94-007-5164-4_2, 2013a.
- Sene, K.: Flash Floods: Forecasting and Warning, chap. Rainfall Forecasting, pp. 101–132, Springer Netherlands, Dordrecht, https://doi.org/10.1007/978-94-007-5164-4_4, 2013b.
- Uijlenhoet, R., Overeem, A., and Leijnse, H.: Opportunistic remote sensing of rainfall using microwave links from cellular communication
10 networks, *WIREs Water*, <https://doi.org/10.1002/wat2.1289>, 2018.
- Upton, G., Holt, A., Cummings, R., Rahimi, A., and Goddard, J.: Microwave links: The future for urban rainfall measurement?, *Atmos Res*, 77, 300–312, <https://doi.org/10.1016/j.atmosres.2004.10.009>, 2005.
- Upton, G. J. G., Cummings, R. J., and Holt, A. R.: Identification of melting snow using data from dual–frequency microwave links, *IET MICROW ANTENNA P*, 1, 282–288, <https://doi.org/10.1049/iet-map:20050285>, 2007.
- 15 Vemado, F. and Pereira Filho, A. J.: Severe Weather Caused by Heat Island and Sea Breeze Effects in the Metropolitan Area of São Paulo, Brazil, *Advances in Meteorology*, 2016, 13 pages, <https://doi.org/10.1155/2016/8364134>, Article ID 8364134, 2016.
- Wang, P. K.: *Physics and Dynamics of Clouds and Precipitation*, Cambridge University Press, <https://doi.org/10.1017/CBO9780511794285>, Cambridge Books Online, 2013.
- Zinevich, A., Alpert, P., and Messer, H.: Estimation of rainfall fields using commercial microwave communication networks of variable
20 density, *Adv Water Resour*, 31, 1470–1480, <https://doi.org/10.1016/j.advwatres.2008.03.003>, 2008.
- Zinevich, A., Messer, H., and Alpert, P.: Prediction of rainfall intensity measurement errors using commercial microwave communication links, *Atmos Meas Tech*, 3, 1385–1402, <https://doi.org/10.5194/amt-3-1385-2010>, 2010.

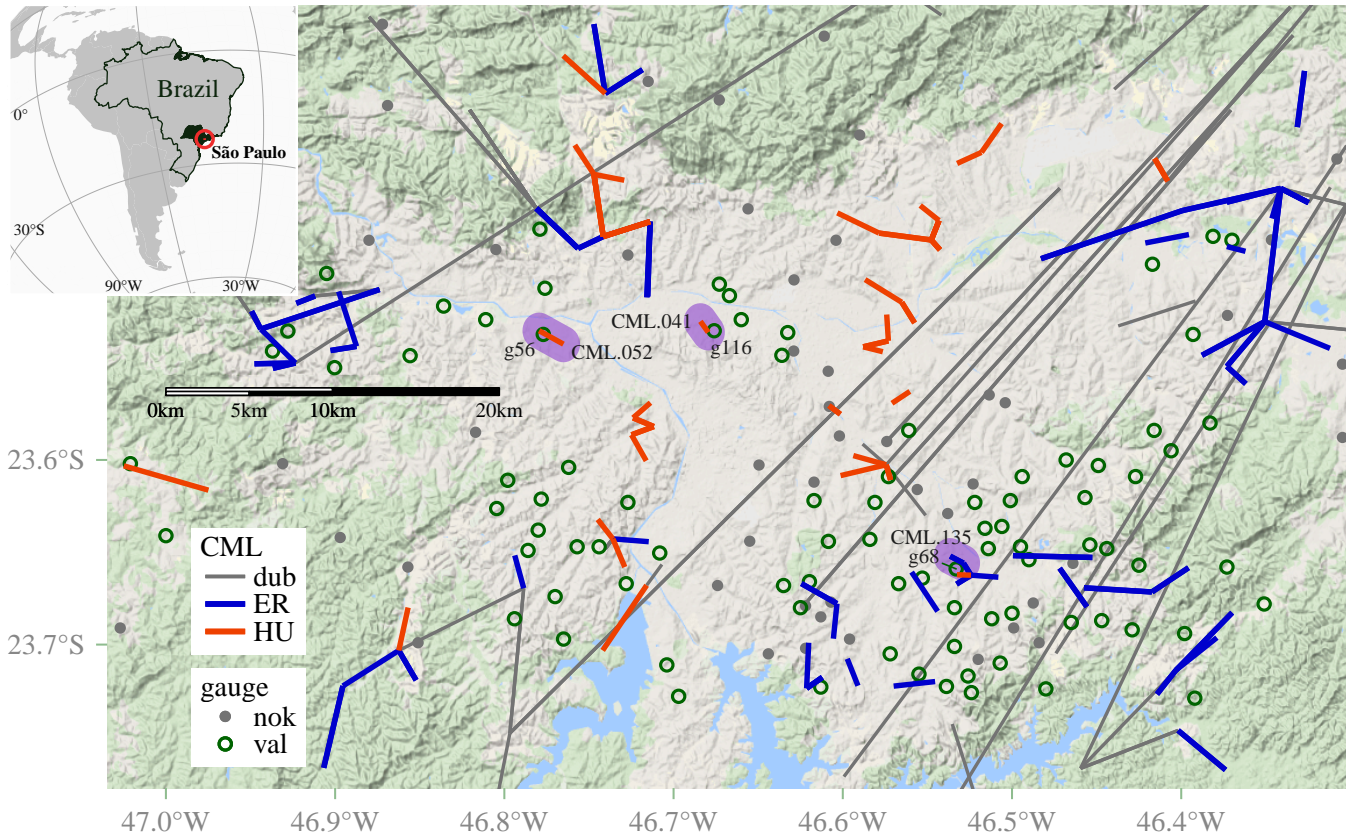


Figure 1. Topology of one CML network in the city of São Paulo, Brazil. 54 Huawei (HU; orange lines) CMLs (40 link paths), and 91 Ericsson (ER; blue lines) CMLs (55 link paths) are shown. The grey link paths (dub) are the 68 CMLs (HU and ER) with frequencies below 15 GHz and link-lengths above 20 km. Such CMLs are not analyzed here due to their dubious configuration. CMLs with frequencies above 15 GHz and link-lengths below 20 km (blue and orange link paths) suggest a very likely power level assignment. The circles are 152 CEMADEN gauges with 10-min resolution available for the studied period (20 October 2014 to 9 January 2015). The 96 green circles (val) represent the valid gauges. A gauge is deemed valid if its coefficient of correlation (r^2) is larger than 0.6 and its relative bias (rB) is lower than $\pm 25\%$ for at least one of the two closest gauges for which it is compared against (see Sec. 2.2). The dots in grey (nok) are the gauges that do not satisfy such thresholds. The 3 CMLs surrounded by a purplish shadow are those CML for which $r^2 \geq 0.6$ and $rB \leq \pm 25\%$ against their respective closest gauge (see also Fig. 5). CML data was provided by the Planetary Skin Institute / Italia Mobile⁴. The geographical location of São Paulo is given in the upper left corner. The DEM was extracted from Google Maps (Google Maps, 2017).

4

⁴We received CML data from a third party. It was not possible to verify on-site the topology of the network shown in Fig. 1, which we suspect not to be accurate given the orientation of the long links.

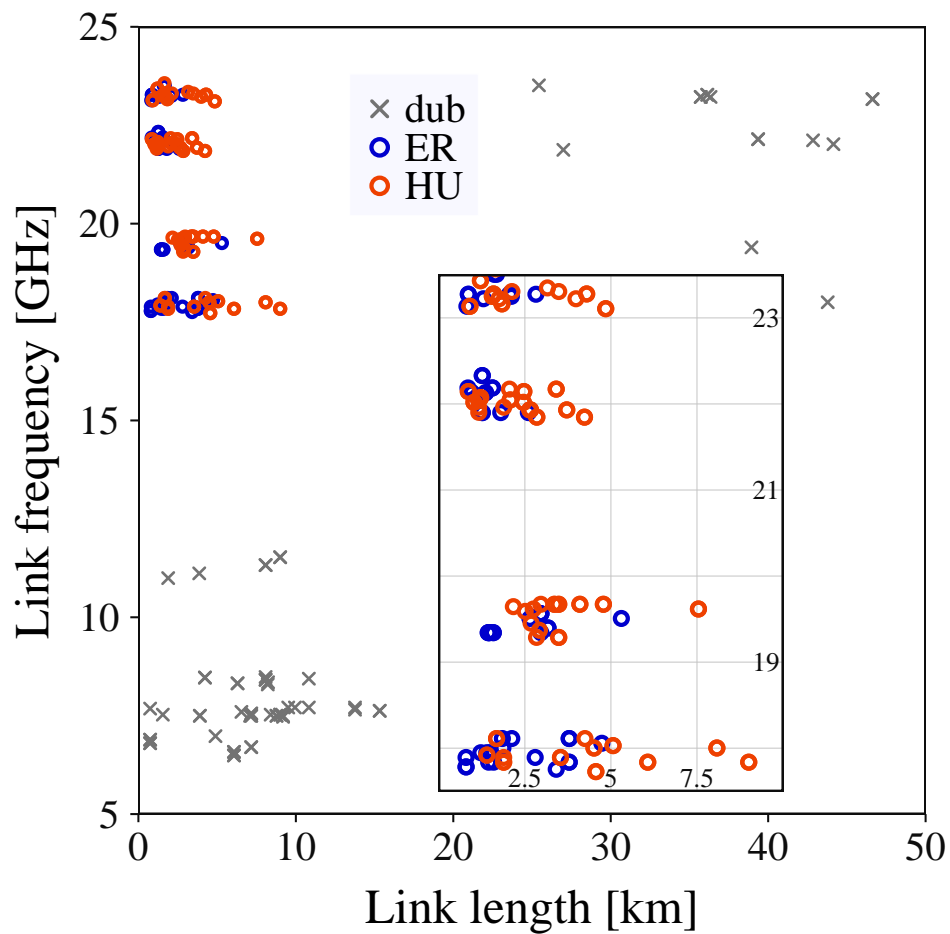


Figure 2. Scatter plot of frequency against link length for all 213 CMLs (149 ER, and 66 HU) shown in Fig. 1. The orange circles are the 54 HU CMLs, the blue circles are the 91 ER CMLs, and the grey markers are those (68) CMLs with frequencies below 15 GHz or link-lengths above 20 km. Inset, there is a zoom into the not-dubious region of frequency vs. link-length commonly found in commercial link networks worldwide.

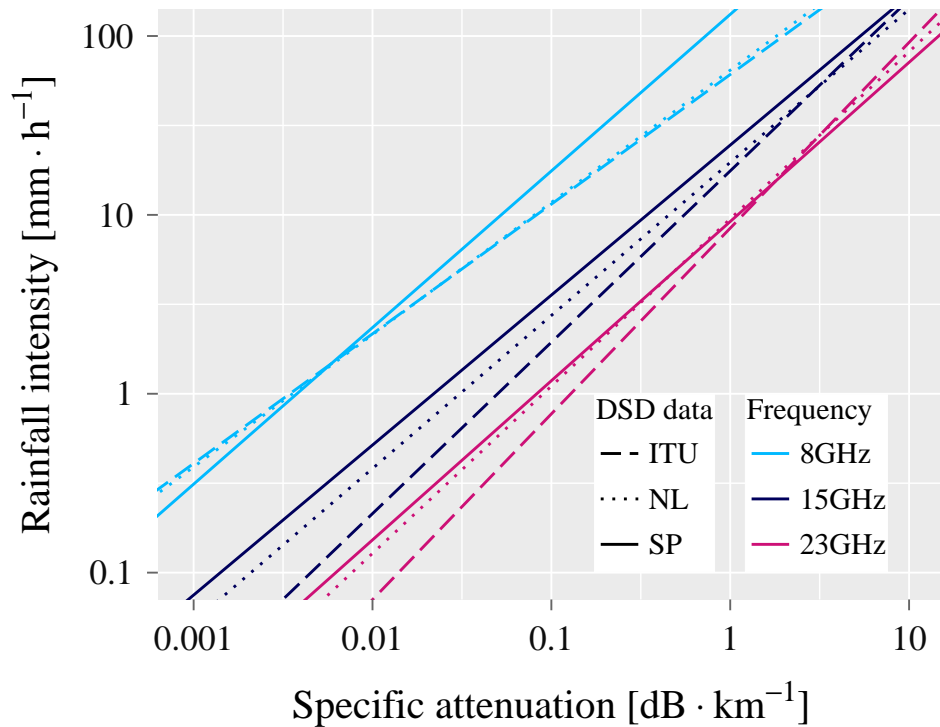


Figure 3. Rainfall intensity against specific attenuation for the a and b parameters of 3 DSD models, i.e, local (SP - continuous line), suggested by ITU-R Recommendation P.838-3 (ITU - dashed line), and RAINLINK's default (NL - dotted line). The $R-k$ relations are presented for 3 frequencies: 8 (cyan), 15 (blue), and 23 GHz (pink).

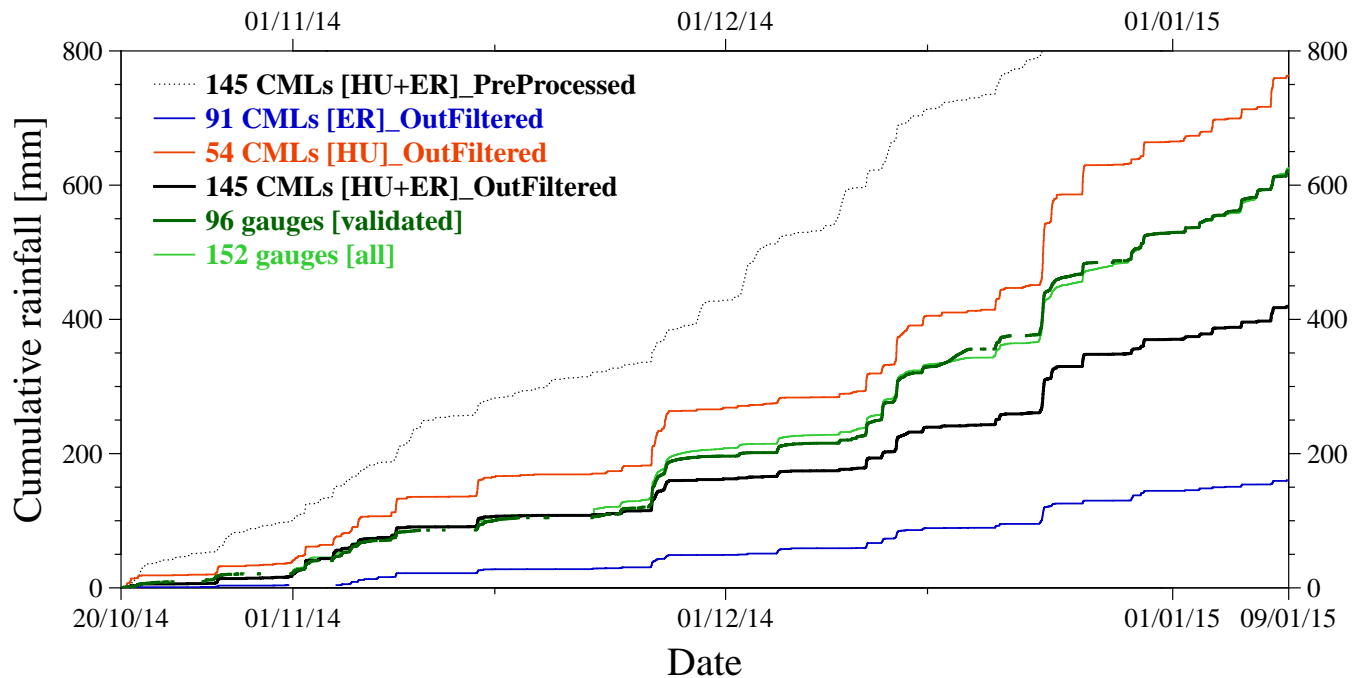


Figure 4. Cumulative time series of 30-min rainfall averaged over the city of São Paulo, Brazil (see Fig. 1) for the period between 20 October 2014 to 9 January 2015. The dotted black line is for the “PreProcessed” RAINLINK approach, i.e., without wet-dry classification and outlier filter; whereas the continuous black line is for the “OutFiltered” RAINLINK approach (with wet-dry classification and outlier filter). Both results (black lines) are obtained from the joint retrieval of Huawei and Ericsson CMLs ([HU + ER]). The blue line is for the ER CMLs only; whereas the orange line is for the HU CMLs. The dark green line is for only the valid gauges (a gauge is deemed valid if its coefficient of correlation (r^2) is larger than 0.6 and its relative bias is within $\pm 25\%$ for at least one of the two closest gauges for which it is compared against (see Sec. 2.2)). The light green line is for all gauges in the CEMADEN network (in the vicinity of São Paulo). In the legend, the numbers indicate the amount of devices (gauges or CML) used in the average. The blank spaces in the cumulative series indicate that no average was possible for that particular time step. It was assumed that no rainfall occurred in such blank spaces; therefore, the curve resumes with its immediate previous value.

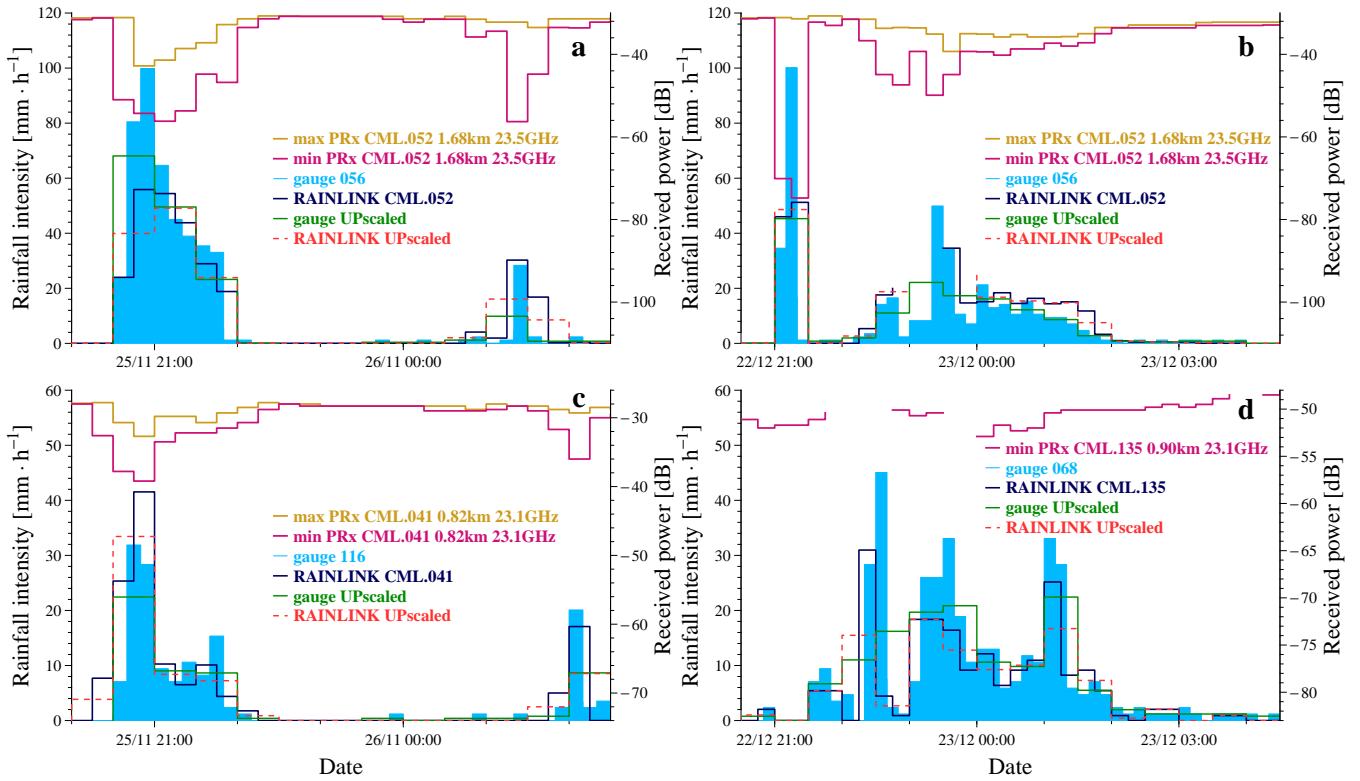


Figure 5. Time series of two rainfall events (November and December 2014, panels a and c, and b and d, respectively) for the three best performing CML, i.e., CML 052 (panels a and b), CML 041 (panel c), and CML 135 (panel d). Their evaluation is done against gauges 56, 116, and 68. CML 135 is an ER link, whereas CML 052 and 041 are HU links (see Fig. 1). Cyan is for 10-min gauge measurements, blue is for 15-min RAINLINK estimates, green is for 30-min upscaled gauges, red is for 30-min upscaled RAINLINK, and pink and gold are for 15-min minimum and maximum received powers, respectively. ER CML only sampled minimum received power. The RAINLINK series are computed for the local DSD parameters (Fig. 3, SP $R-k$ relation).

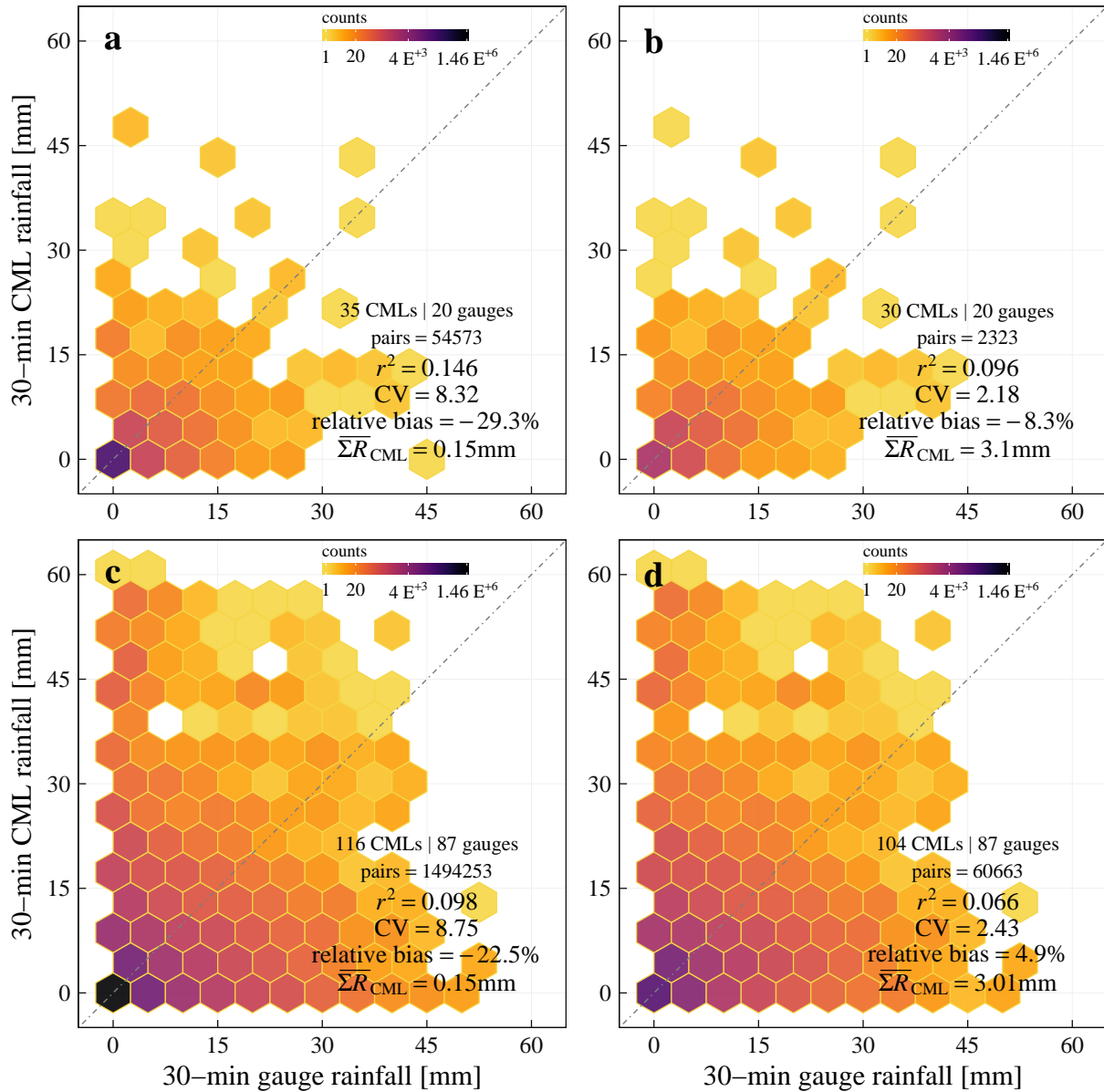


Figure 6. Scatter density plots of half-hourly CML rainfall depths vs. gauge rainfall depths from 20 October 2014 to 9 January 2015. Top row (panels a and b) is for the analysis up to 1 km in the vicinity of the selected CMLs. Bottom row (panels c and d) is for the analysis up to 9.1 km in the vicinity of the selected CMLs. As noted in the inset metrics, the number of CMLs vary given the selection of the vicinity/radius. Left column (panels a and c) is for the analysis of all rainfall pairs, i.e., zeros included. Left column (panels b and d) is for the analysis of those pairs in which both rainfall depths are above zero (i.e., rainy events). The color scale is logarithmic.

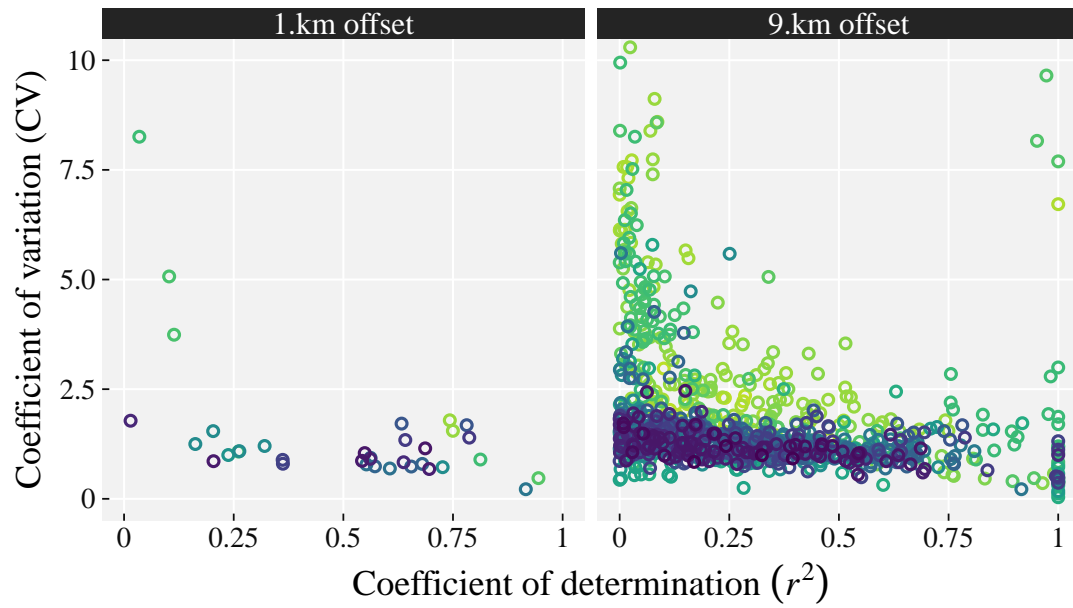


Figure 7. Scatter plot of the performance of individual CMLs against gauges (coefficient of variation against coefficient of determination). The left panel (1.km offset) is for gauges within 1 km from the selected CMLs. The right panel (9.km offset) is for gauges within 9 km from the selected CMLs. Each distinguishable color in the plots represents the metrics of an individual CML, i.e., one color per evaluated CML (regardless its gauge comparison). The metrics are for cases in which both CML and gauge rainfall depths are above 0.0 mm (Fig. 6, right column). RAINLINK estimates are computed for the SP $R-k$ relation.