

The Community Cloud retrieval for Climate (CC4CL). Part I: A framework applied to multiple satellite imaging sensors

Oliver Sus¹, Martin Stengel¹, Stefan Stapelberg¹, Gregory McGarragh², Caroline Poulsen³, Adam C. Povey⁴, Cornelia Schlundt¹, Gareth Thomas³, Matthew Christensen^{2,3}, Simon Proud², Matthias Jerg¹, Roy Grainger⁴, and Rainer Hollmann¹

¹DWD - Deutscher Wetterdienst, Frankfurter Straße 135, 63067 Offenbach, Germany

²Department of Physics, University of Oxford, Clarendon Laboratory, Parks Road, Oxford OX1 3PU, U.K.

³RAL Space - Rutherford Appleton Laboratory, Chilton, Didcot, OX11 0QX, U.K.

⁴National Centre for Earth Observation, Atmospheric, Oceanic and Planetary Physics, University of Oxford, Parks Road, Oxford OX1 3PU, U.K.

Correspondence to: Martin Stengel
martin.stengel@dwd.de

Abstract. We present here the key features of the Community Cloud retrieval for CLimate (CC4CL) processing algorithm. We focus on the novel features of the framework: the optimal estimation approach in general, explicit uncertainty quantification through rigorous propagation of all known error sources into the final product, and the consistency of our long-term, multi-platform time-series provided at various resolutions, from 0.5° to 0.02° .

5 By describing all key input data and processing steps, we aim to inform the user about important features of this new retrieval framework, and its potential applicability to climate studies. We provide an overview of the retrieved and derived output variables. These are analysed for four, partly very challenging, scenes collocated with CALIOP (Cloud-Aerosol lidar with Orthogonal Polarization) observations in the high-latitudes and over the Gulf of Guinea/West Africa.

The results show that CC4CL provides very realistic estimates of cloud top height and cover for optically thick clouds but, where optically thin clouds overlap, returns a height between the two layers. CC4CL is a unique, coherent, multi-instrument cloud property retrieval framework applicable to passive sensor data of several EO missions. Through its flexibility, CC4CL offers the opportunity for combining a variety of historic and current EO missions into one data set, which, compared to single sensor retrievals, is improved in terms of accuracy and temporal sampling.

1 Introduction

15 The European Space Agency has established the ESA Climate Change Initiative program (ESA CCI, 2015; Hollmann et al., 2013) in order to advance knowledge of the climate system through the generation of satellite based data records utilizing European and non-European assets. The CCI project's primary focus is the production of thirteen Essential Climate Variables (ECVs) covering ocean, atmosphere, and land geophysical variables. With these data records, CCI is aiming to fulfil highest climate requirements from the Global Climate Observing System (GCOS). This study presented here is part of the ESA CCI for clouds (ESA Cloud_cci), which has the objective to develop a state-of-the-art open-source community cloud retrieval algorithm

which shall be capable of processing passive satellite imager data covering several decades. Both in part I and part II of this paper, we present the processing framework as developed within ESA Cloud_cci (CC4CL, part I), the detailed mechanisms of the optimal estimation retrieval (part II), and provide an initial assessment of the strengths and weaknesses of derived cloud parameters (part I). With CC4CL, several decades of passive imaging satellite data have been processed and are made available to the user. The resulting climate data records (CDR) are presented in Stengel et al. (2017).

Satellite data are an essential source of information for understanding and predicting climate change. They provide global long-term observations from which geophysical parameters can be derived. These are used for time-series analysis of climate variables, and also for the assimilation into or validation of climate models (Comiso and Hall, 2014; Yang et al., 2013). A paramount goal of these efforts is the comprehensive characterization of the global energy and water budgets (Stephens et al., 2012).

Clouds considerably influence the global energy budget through direct forcing effects (Kiehl and Trenberth, 1997). However, clouds are difficult to quantify, having highly variable composition and spatiotemporal distributions, and produce the largest uncertainty in our understanding of climate change (Norris et al., 2016; IPCC, 2013). Observations from passive imagers do not sufficiently resolve several important cloud properties, such as vertical structure, sub-pixel heterogeneity, the cloud boundary, and the column-integrated ice or liquid water path. Several secondary variables (cloud forward model assumptions, state of surface and atmosphere, viewing geometry, sensor calibration and spectral response uncertainties) further complicate cloud retrievals, and insufficient quantification of their state propagates uncertainties into the derived cloud properties (Hamann et al., 2014). Nonetheless, passive satellite imagers are the most widely used instruments for cloud retrievals as they provide long-term, global coverage at acceptable cost for the user.

There are several satellite-based retrieval frameworks. One of the earliest is the International Cloud Climatology Project (ISCCP) (Rossow and Schiffer, 1999). ISCCP provides data on cloud products for 1983–2009, and introduced a cloud type classification based on cloud optical thickness–cloud top pressure (COT-CTP) joint histograms that is still popular even today. Continuously reprocessed retrieval systems include Pathfinder Atmosphere Extended (PATMOS-x) (Heidinger and Pavolonis, 2009; Heidinger et al., 2012), EUMETSAT Satellite Application Facility on Climate Monitoring (CM SAF) cCloud, Albedo and Radiation (CLARA-A1) (Karlsson et al., 2013), and MODIS Collection 6 (MODIS C6) (Platnick et al., 2017) as well as the CERES-MODIS products (Minnis et al., 2011). These retrievals vary in their ancillary data sources, approaches, and complexity but generally use radiative transfer models and/or derived look-up tables (LUT) to provide a clear-sky reference and for simulating atmospheric and cloud contributions to top of atmosphere (TOA) radiances. Cloud properties are derived using decision trees and thresholding (PPS in CLARA-A1), LUT based inversions (MODIS C6), or optimal estimation theory (PATMOS-X). COT and CER (cloud effective radius) are usually calculated following Nakajima and King (1990). However, the derived microphysical variables are not guaranteed to be radiatively consistent with independently derived cloud parameters, as most of the retrieval methods are separated into solar and thermal methods even though measurements in these spectral regions are not independent of parameters retrieved in the other. For cloud masking, the retrieval frameworks apply various approaches such as Naïve Bayes (PATMOS-X), dynamic thresholding (CLARA-A1), or a battery of threshold tests (MODIS C6). Finally, cloud phase or type is determined as a function of a combined convergence/cloud top temperature (CTT)-test (CLARA-A1),

the Pavolonis et al. (2005) threshold algorithm (PATMOS-X), or a majority vote algorithm that combines four phase tests based on CTT, tri-spectral IR, 1.38 μm , and spectral CER data (Marchant et al., 2016; Baum et al., 2012). Compared to the Advanced Very High Resolution Radiometer (AVHRR), MODIS has several additional spectral channels at shortwave infrared (SWIR) wavelengths that provide cloud microphysical information (Platnick et al., 2017), such that MODIS data provide more information for retrieving cloud products than AVHRR. Still, the MODIS C6 cloud top retrieval loses sensitivity for optically thinner clouds ($\text{COT} < 2$, Menzel et al. (2010); Christensen et al. (2013)). This complicates validation against independent measurements such as those derived from lidar, which explicitly observe the cloud top. Despite some promising results, these studies show that current retrievals underestimate cloud top pressure for optically thin clouds due to the inherent limitation of the spectral information content of passive IR channels.

There are numerous studies that evaluate the performance of the aforementioned retrievals for cloud fraction with weather station data, such as over the Mediterranean (Sanchez-Lorenzo et al., 2017) and contiguous United States (Sun et al., 2015). The results are variable, but generally show that the inter-annual correlation is highest for PATMOS-X (up to a Pearson correlation coefficient $r = 0.94$) and lowest for CLARA-A1 ($r = 0.20 - 0.7$). More importantly, these studies emphasize the difficulty of deriving reliable cloud fraction trends from AVHRR time series, as the retrievals overestimate the change in cloud fraction by as much as an order of magnitude (Sun et al., 2015). There are also several evaluation or validation studies for individual retrieval algorithms. Differences between PATMOS-X microphysical retrievals using MODIS data and the collocated MYD06 product are within retrieval uncertainty (Walther and Heidinger, 2012). CLARA-A2 underestimates global cloud top height (CTH) by 840 m compared to CALIOP. Comparing CLARA-A2 to PATMOS-X, MODIS C6 and ISCCP, global CTP is lower by 4–90 hPa and has an absolute cloud phase bias of lower than 9 % (Karlsson et al., 2016). MODIS C6 CTH bias for low-level boundary layer water clouds is + 197 m compared to CALIOP, and the phase identification has been improved for liquid clouds. However, the phase identification of optically thin ice clouds over warm, bright surfaces remains problematic (Marchant et al., 2016). For MODIS C5, global CTH was underestimated relative to CALIOP by 1.4 km (Holz et al., 2008).

Satellite observations of clouds are available for the last 40 years. However, data need to be carefully processed and analysed in order to derive a consistent long-term data record from several inter-calibrated satellite platforms. There is a trade-off between using the information from a single sensor optimally and using the information from different sensors consistently. The former may provide the most scientifically accurate data but often results in sharp discontinuities as instruments are introduced. Towards the aim of producing a stable, self-consistent climate record, this paper focuses on evaluating data from a range of sources through a unified methodology. Modern sensors provide improved spectral coverage and spatial resolutions and, thus, potentially better cloud retrievals. However, their data records are too short to produce climatologies of at least 30 years, and discontinuities are built into time series when higher resolution satellite data are input to the processing. Major complications of cloud retrievals include optically transparent clouds, multi-layer or overlapping clouds, and effective cloud top height determination. The degree to which these complications can be addressed depends on the nature of the retrieval and the type of input satellite data used. MODIS provides a much larger spectral sampling than the six AVHRR heritage channels. MODIS and atmospheric sounders are clearly superior when detecting cloud height through the application of the “CO2-

slicing” technique. However, when consistent climatologies are to be built, time series length and spatiotemporal resolution limit the choice in retrieval type and input satellite data.

In order to produce the cloud CDR presented here, we used satellite data from MODIS Aqua and Terra (2000–2014) (King et al., 1992), AVHRR on NOAA-7 to NOAA-19 and METOPA (1978–2014) (Jacobowitz et al., 2003), ATSR-2 on ERS-2
5 (1995–2003), and AATSR on ENVISAT (2002–2012). Only the AVHRR-equivalent channels from MODIS and AATSR are used. Hence, the resulting retrieval data are hereafter referred to as the “AVHRR heritage dataset”. Moreover, the resulting time series were carefully validated against well-established climatologies (ISCCP, PATMOS-x, CM SAF, and MODIS Collec-
tion 6), reanalysis and model data (ERA-Interim and EC-Earth), ground-truth synoptic observations, and CALIOP lidar data (Stengel et al., 2017, 2018).

10 The CC4CL core algorithm was developed in a modular fashion and provides open-source access to support distribution and development within the scientific community. Particular attention was paid to allow processing of multiple instruments within a single framework, thus maximising the consistency of cloud products independent of the sensor source. The framework accounts for physical consistency amongst all output variables and radiative consistency amongst all input satellite radiances. This is an improvement over other established retrieval frameworks. These commonly derive COT and CER by adopting
15 the Nakajima and King (1990) approach, but macrophysical products are estimated independently and are thus radiatively inconsistent with the former variables. Here, parameters are retrieved simultaneously, providing a retrieval that is radiatively consistent over the wavelengths of the observations, given that the instrument’s noise characteristics are well known. Another key feature of CC4CL is the production of uncertainty estimates of retrieval parameters (see also Platnick et al. (2017)) through explicit error propagation from input to output data. With these criteria in mind, the Optimal Retrieval of Aerosol and Cloud
20 (ORAC) (Thomas et al., 2009a; Poulsen et al., 2012) was chosen from three competing algorithms in a “round-robin” (i.e. each algorithm is tested against all other algorithms) analysis. All algorithms have proven their maturity for deriving the considered cloud parameters (cloud cover, liquid and ice water path, cloud top height) from AVHRR and MODIS data (Stengel et al., 2015).

In this study, we present the key features of the CC4CL processing algorithm. We particularly focus on discussing the key
25 features of the framework: the optimal estimation approach in general, the explicit uncertainty quantification through rigorous propagation of all known error sources to the final product, and the consistency of our long-term, multi-platform time-series provided at various resolutions, from 0.5° to 0.02° . By describing all key input data and processing steps, we inform the future user about important features of this new processing framework, and its potential applicability in climate studies. We provide an overview of the retrieved and derived output variables. These are initially examined in a detailed analysis of retrieval results that
30 we collocated with CALIOP observations for three scenes in the Arctic and one scene in the Gulf of Guinea/West Africa. The results show that CC4CL produces mixed-layer estimates for cases where optically thin clouds overlap, but provides realistic estimates of cloud top height and cover for optically thick clouds.

2 Data and methods

2.1 Level-1 (L1) satellite data

2.1.1 AVHRR

The Advanced Very High Resolution Radiometer (AVHRR) is a cross-track scanner with a 2900 km swath width, providing almost daily global coverage. The sensor is equipped with six spectral channels (Table 01), out of which only five can be transmitted simultaneously so that either channel 3a or 3b is available. In-flight calibration is performed only for thermal channels, using a stable blackbody and a space view as references. AVHRR has been mounted on several NOAA platforms as well as on EUMETSAT's MetopA/B, all of which are sun-synchronous, polar orbiting satellites. Due to a lack of orbit control technology for all NOAA AVHRR's, there is considerable orbit drift in equatorial crossing times (ECT) both for morning (ECT < 12:00 LST) and afternoon (ECT > 12:00 Local Solar Time (LST)) satellites. To reduce drift-induced changes in retrieved cloud properties, any AVHRR is replaced with its corresponding successor once available (= the AVHRR prime record). Typically, one morning and one afternoon NOAA satellite are in orbit at any time.

For CC4CL, we use Global Area Coverage (GAC) L1c data on a reduced spatial resolution of 1.1 km × 4 km at nadir (Devasthale et al., 2017). The AVHRR GAC L1c data record, including advanced inter-calibration efforts, was produced for ESA Cloud_cci and CMSAF (Schulz et al., 2009; Karlsson et al., 2013). CC4CL processed AVHRR data from 08/1981 (NOAA-7) up to 12/2014 (MetopA + NOAA-19). We applied a filtering technique to channel 3b data, and a database algorithm for splitting midnight orbits and blacklisting.

2.1.2 MODIS

The Moderate Resolution Imaging Spectroradiometer (MODIS) is carried by NASA's Terra and Aqua satellite platforms in a near sun-synchronous polar orbit at 705 km altitude. Due to orbit control, ECT is a constant 10:30 LST for Terra, and 13:30 LST for Aqua. The Aqua satellite is a member of the "A-Train" constellation, which also includes the CALIPSO and CloudSat satellites. MODIS is a cross-track scanner with a 2330 km swath width, producing a complete near-global coverage in less than two days (Xiong et al., 2009).

CC4CL is applied to Collection 6 MOD021km (Terra) and MYD021km (Aqua) L1b input data (NASA LP DAAC, 2015). For the AVHRR-heritage dataset produced here, the NASA Goddard Space Flight Center performed a spectral subsetting of the 36 MODIS channels available (see Table 01 for the channels extracted), and data were directly shipped to ECMWF (European Centre for Medium-Range Weather Forecasts) for archiving. The files are stored in HDF-EOS format at 1km spatial resolution, with the 250 m and 500 m channels having been aggregated to 1 km resolution. MODIS L1b data are organized in granules, each of which contains ~5 minutes of MODIS data or ~203 scan lines. Geolocation information is provided in separate files for Terra (MOD03) and Aqua (MYD03), containing geodetic latitude and longitude and solar/satellite zenith and azimuth angles. L1b data are corrected for all known instrumental effects through on-board calibrator data, and are organized into a viewing

swath matching the geolocation file structure (MODIS Characterization Support Team, 2009). With CC4CL, we processed data from 02/2000 (Terra) or 08/2002 (Aqua) to 12/2014.

2.1.3 ATSR-2 and AATSR

The second and third generation Along Track Scanning Radiometers (ATSR-2 and Advanced ATSR, Merchant et al. (2012)) were launched on ESA's polar orbiting satellites ERS-2 and ENVISAT in 04/1995 and 03/2002, respectively. Both platforms were put into a sun-synchronous orbit at ~780 km altitude, with ECT = 10:30 LST for ERS-2 and ECT = 10:00 for ENVISAT. Both ATSRs are identical in their overall configuration except for data transfer bandwidth (Table 01). ATSR is equipped with on-board calibration capabilities, such as two black-body targets for the thermal channels and a sun-illuminated opal target for the visible/near-infrared channels. ATSR uses a dual-view system: a nadir view, and a forward view scanning the surface at an angle of 55°. The continuous scanning pattern produces a nadir resolution of approximately 1 km × 1 km with a swath width of 512 pixels or ~500 km, providing global coverage every six days.

We used no forward view data for cloud retrievals, as the 3-dimensional cloud structure produces parallax effects which are not accounted for within the current forward model. With CC4CL, we processed ATSR data from launch date until 05/2003 (ERS-2) and 04/2012 (ENVISAT).

2.2 Ancillary data

2.2.1 ERA-Interim

We use ERA-Interim data as first-guess input for the retrieval of surface temperature, and as input to a neural network cloud mask (see Section 3.3.1). ERA-Interim is a reanalysis of the global atmosphere, and is available from 1979 until today (Berrisford et al., 2011; Dee et al., 2011). The atmospheric profile variables are defined at 60 vertical levels. The original horizontal resolution is defined through a T255 spherical-harmonic representation for the basic dynamical fields, and through a reduced Gaussian grid with ~79 km spacing for surface fields. We downloaded ERA-Interim data from the ECMWF's MARS archive at a spatial resolution of 0.72°(the default preprocessing grid resolution), and at a higher resolution of 0.1° for the neural network cloud mask input variables (Table A1). We acquired analysis (i.e. not forecast) data at 6-hourly timesteps. After download, all files were remapped to the CC4CL preprocessor grid through Climate Data Operators (CDO, 2015). This was necessary, as ERA-Interim coordinates are defined at the cell boundaries, whereas they are defined at the cell centres within CC4CL. The reanalysis data are temporally interpolated onto the satellite image's centre time by linearly weighting the files before and after.

ERA-Interim's land-surface model still needs to be improved in terms of its simulation of soil hydrology and snow cover. This affects the utilization of satellite data over land surfaces within ERA-Interim, which has negative effects on the representation of clouds and precipitation (Berrisford et al., 2011). The confidence in temperature trend estimates, however, has improved considerably so that ERA-Interim data have been used as an alternative to observational datasets to monitor climate change (Willett et al., 2010).

2.2.2 Land use

We downloaded United States Geological Service (USGS) Land Use/Land Cover raster data from the global land cover characteristics database (U.S. Geological Survey, 2016). This was necessary, as early AVHRR data are distributed without masking information. The USGS data are used as a land sea mask within the optimal estimation retrieval (Section 3.3.3), as well as a
5 land cover classifier within the cloud mask and the Pavolonis cloud typing scheme (Section 3.3.2). The dataset is defined on a regular lat/lon grid with 0.05° resolution. The USGS land cover classification was primarily derived from 1 km AVHRR Normalized Difference Vegetation Index (NDVI) 10-day composites for April 1992 through March 1993 (U.S. Geological Survey, 2016).

2.2.3 Land surface BRDF

10 MODIS Collection 6 Bidirectional Reflectance Distribution Function (BRDF) data (MCD43C1, Schaaf and Wang (2015)), providing kernel weights for the Ross-Thick/Li-Sparse-Reciprocal BRDF model, are used within the retrieval scheme to set surface albedo and bidirectional reflectance distribution conditions. These data are available every 8 days derived from cloud-cleared 16-day Terra and Aqua measurements, and provided in HDF-EOS format at 0.05° spatial resolution. MCD43C1 data are classified as high-quality given sufficient observations, and otherwise a low quality estimate is produced based on climatology
15 anisotropy models. Validation against albedo measurements made at Baseline Surface Radiation Network (BSRN) sites show that the black-sky and white-sky albedo computed from the single sensor MCD43A1 high-quality product are well within 5 % of the measured albedo, while the low-quality product is within 10 % (Lucht, 1998).

We regridded MCD43C1 data to instrument resolution through bilinear interpolation, and filled missing pixels within the time series with pixel values of the temporally closest 8-day composite file providing valid data. For the pre-MODIS era,
20 we produced a BRDF climatology by averaging all data available for a particular 8-day time slot. MCD43C1 kernel weights are applied to all CC4CL sensors, neglecting differences in spectral response functions. This might result in retrieval biases, particularly in spectral regions that are sensitive to rapidly changing environmental processes such as vegetation growth (near-IR). Note that the use of a climatology would add a discontinuity in the surface time series if there are trends in the surface BRDF and emissivity time series during the MODIS era.

25 2.2.4 Land surface emissivity

For land surface emissivity, we used the Cooperative Institute for Meteorological Satellite Studies (CIMSS) global land surface infrared emissivity database created by the Baseline Fit method (Seemann et al., 2008). These data are derived from the MODIS operational land surface emissivity product (MOD11), to which the fit method is applied for filling spectral gaps between channels. CIMSS emissivity data are available on a monthly basis at ten wavelengths with 0.05° spatial resolution.

30 As for BRDF, we produced a land surface emissivity climatology for the pre-MODIS era by averaging all data available for a particular month.

2.3 Collocating CC4CL Level-2 (L2) data and CALIOP

We resampled CC4CL L2 data to a regular latitude/longitude grid at $0.1^\circ \times 0.1^\circ$ resolution. This resampling is required for an intercomparison of CC4CL L2 data on a common grid. However, note that differences in sensor spatial resolution can lead to significantly different PDFs within a grid box, the effect of which we did not analyse. CALIOP's Level 2 5 km Cloud Layer data were produced by averaging over ~ 14 beams with 70 m diameter taken every 335 m within a 5 km along-track corridor. Thus, CALIOP data have a 70 m across-track \times 5 km along-track spatial resolution (see also Holz et al. (2008)), and the size of the corresponding CC4CL grid box is approximately 11 km (meridional) \times 2.9 to 5.6 km (zonal). As a consequence, the CC4CL grid boxes are larger than the reference CALIOP pixels, but are still small enough to resolve some of the cloud features that CALIOP observes. Note that AVHRR GAC data were produced by averaging 5 neighbouring pixels across-track, but CALIOP data were averaged along-track.

3 The CC4CL retrieval system

3.1 Heritage

In the early stages of the Cloud_cci project, a "Round Robin Exercise" evaluated three different algorithms regarding their applicability for retrieving cloud parameters from satellite data (Stengel et al., 2015), which were 1) the operational processing system of the CM SAF (2015), 2) the Clouds from AVHRR Extended (CLAVR-X) algorithm used to generate the PATMOS-x climatology (Heidinger et al., 2013), and 3) the ORAC retrieval which was previously used to produce the Global Cloud and Aerosol Dataset Produced by the Global Retrieval of ATSR Cloud Parameters and Evaluation (GRAPE) data set (Thomas et al., 2009b; Natural Environment Research Council et al., 2015). All three algorithms were driven with identical MODIS and AVHRR input data and ERA-Interim meteorological background information for five days in 2008. The results were analysed with respect to CloudSat, CALIOP and AMSR-E reference data.

Based on the outcomes of that study (Stengel et al., 2015), ORAC was selected to be the cloud retrieval scheme within CC4CL. Moreover, code modifications were identified and characterized to render ORAC fit for the purpose of ECV production.

3.2 Preprocessing

The CC4CL preprocessor initially defines the dimensions and content of the sensor and preprocessing grids (Figure 01).

The sensor grid has the same extent and resolution as the input orbit or granule. The sensor grid is filled with sensor radiances and angles, time, and geolocation data (section 2.1), whereas surface BRDF (section 2.2.3), snow/ice coverage (from ERA-Interim, section 2.2.1), and surface emissivity (section 2.2.4) are bilinearly interpolated onto that grid. We use BRDF data over land only. For sea pixels, the Cox and Munk ocean surface reflectance model calculates BRDF coefficients as a function of ERA-Interim wind speed. These coefficients also contain foam and underlight components (Sayer et al., 2010). The albedo

of snow/ice covered pixels is set to globally constant values of 0.958 (Ch1, CC4CL ID as in Table 01), 0.868 (Ch2), 0.0364 (Ch3), and 0.0 (Ch4), and is area-weighted in the event of fractional sea/ice cover.

The preprocessing grid is a regular latitude/longitude grid that covers the extent of the sensor grid, but at a coarser resolution of $0.72^\circ \times 0.72^\circ$. It is used to store the average of all sensor angle and surface emissivity values falling within a grid box and spatially interpolated (nearest neighbour) land-use data (section 2.2.2). ERA-Interim variables were transformed before input to the preprocessing grid as described in section 2.2.1. For profile variables, vertical geopotential coordinates are calculated from pressure coordinates.

The preprocessor then calls the cloud mask (section 3.3.1) and cloud typing (section 3.3.2) algorithms. Finally, the Radiative Transfer for TOVS (RTTOV) model is executed on the preprocessing grid data as defined by ERA-Interim surface and profile variables. RTTOV outputs profiles of cloud transmittance both above and below cloud for the shortwave channels and emissivity for the longwave channels. For details on RTTOV and the forward model, see part II of this paper (McGarragh et al., 2017c).

All data are written to NetCDF files. In theory, the main processor would evaluate these inputs twice, assuming different cloud phases (e.g. ice and liquid). In practice, ORAC uses the preprocessed cloud mask and phase to select an appropriate method to reduce processing time.

3.3 CC4CL cloud retrieval

3.3.1 Cloud detection

The CC4CL cloud mask is produced by (1) estimating pseudo CALIOP cloud optical depth (ANNCOD) from L1 measurements with an artificial neural network (ANN), (2) correcting ANNCOD for viewing-angle dependencies, and (3) classifying ANNCOD into binary cloud mask information by thresholding.

CC4CL applies a set of ANN for cloud masking, one for each of the illumination conditions day (solar zenith angle $\theta_0 < 80^\circ$), night ($\theta_0 \geq 90^\circ$), and twilight ($80 \leq \theta_0 < 90^\circ$). The ANNs are multilayer perceptrons with one input layer, one hidden layer with 50 neurons, and one output layer, which produces ANNCOD ranging from 0 to 1. Through incremental testing, we found that 50 neurons was the value for which the trade-off between output quality and computing speed was optimal. For the input layer, input variables are surface temperature, snow/ice cover, and the land/sea mask for all three cloud masks. Regarding sensor data, input channels are Ch1, Ch2, Ch5, Ch6, and Ch5-Ch6 for the day ANN, Ch4, Ch5, Ch6, Ch5-Ch4, and Ch5-Ch6 for the night ANN, and Ch5, Ch6, and Ch5-Ch6 for the twilight ANN.

The various ANNs were trained with NOAA-18 AVHRR L1c data, ancillary information (ECMWF land-sea mask, snow-ice mask, and surface temperature), and cloud optical depth (COD) “truth” data obtained from CALIOP’S 532 nm lidar product (CAL_LID_L2_05kmCLay-Prov-V3-01). AVHRR Ch3a data were generally excluded. We trained the day ANN with all remaining AVHRR channels, but also excluded Ch3b to be consistent with those NOAA platforms that switch between Ch3b transmission at night and Ch3a at day (NOAA-16, NOAA-17, MetopA) For night and twilight conditions, we produced ANNs both with and without Ch3b data input. This was necessary to avoid misclassification of very cold clouds and/or land surfaces

due to Ch3b’s very low signal-to-noise ratio. In addition to the days evaluated in the “Round Robin” comparison, we selected 12 further training days in 2008 that contain collocations between NOAA-18 and CALIOP, represent COD seasonality, and provide global coverage. Prior to training, all CALIOP COD values > 1 were set to unity. Ancillary data input are the ERA-Interim skin temperature, a snow/ice mask derived from ERA-Interim snow depth and sea ice concentration, and the USGS
5 land/sea mask. Finally, we applied a simple correction algorithm to remove a cosine viewing-angle dependency of retrieved ANNCOD. This was necessary, as the maximum viewing angle in the AVHRR training dataset was just 35° . The binary cloud mask is estimated by classification of ANNCOD data into clear and cloudy through a set of threshold values. The thresholds themselves vary depending on illumination and surface conditions, namely land, sea, and snow/ice cover (Table 02), and were quantified through iterative optimization. They are fixed for all sensors and orbits. As the ANN was trained with AVHRR
10 data only, differences in spectral response functions need to be considered before the ANN can be applied to MODIS and AATSR. We derived appropriate coefficients through linear regression analysis between collocated satellite observations for each input channel pair (Table 03), applying a filter on differences in satellite zenith angle ($> 0.5^\circ$), sun zenith angle ($> 1^\circ$), and observation time (> 30 mins). The resulting coefficients were applied to MODIS and AATSR satellite data before ANN input.

15 We estimate cloud mask uncertainty based on the assumption that this uncertainty is inversely proportional to the difference between retrieved ANNCOD and the threshold applied. As a first step, we generated a CALIOP cloud mask by application of a clear/cloudy threshold value of 0.05. The CALIOP cloud mask is then compared with the collocated ANN mask by quantification of a Percent Correct (PEC) score. PEC estimates the ratio between all correctly classified pixels and the number of all pixels analysed. Finally, the “truth” uncertainty is defined as $100 - \text{PEC} \%$. We then established the statistical relationship
20 between this uncertainty and the ANNCOD difference to its threshold. Before application of the approach, we normalised differences (ND) to 1. We found a linear correlation between uncertainty and ND for clear cases given by

$$y = 37.275 \times \text{ND} + 49.2, \quad (1)$$

and a second order polynomial correlation for cloudy cases (Figure 02)

$$y = 54.133 \times (\text{ND} - 1)^2 + 1.862. \quad (2)$$

25 The equations of these regression fits are used within CC4CL to quantify cloud mask uncertainty as a function of ND.

3.3.2 Cloud typing

Cloud phase is determined by application of the Pavlonis cloud typing algorithm (Pavlonis et al., 2005). The Pavlonis algorithm outputs 6 cloud types (Table 04), which we then reclassified into water or ice clouds: liquid = fog/warm liquid/supercooled, ice = opaque ice/cirrus/overlap. For CC4CL, the fog type test was deactivated. The algorithm always uses
30 the 0.65, 11, and 12 μm channel data. It reads 3.75 μm data whenever available, and 1.65 μm otherwise. These two different approaches produce nearly identical results, except for certain thin clouds and cloud edges (Pavlonis et al., 2005). In addition, we introduced two new cloud types within CC4CL. In response to validation studies, we decided to change the phase of ice

clouds whose retrieved CTT is > 273.16 K, the freezing point of water (new cloud type = SWITCHED_TO_WATER), and of water clouds whose CTT < 233.16 K, the lower limit of supercooled water (SWITCHED_TO_ICE).

The Pavolonis algorithm has weaknesses in detecting cirrus clouds at high latitudes, which are often misclassified as opaque ice clouds. Performance is considerably better when the VIIRS algorithm is used, which provides additional channels and threshold tests. However, these cannot be applied to our AVHRR heritage dataset (Pavolonis et al., 2005).

3.3.3 Optimal estimation retrieval of COT, CER and CTP

The optimal estimation retrieval ORAC is a non-linear statistical inversion method based on Bayes' theorem (Rodgers, 2009). A state vector containing all variables to be retrieved is optimized to obtain the best fit between observed TOA radiances and radiances simulated by a forward model. The retrieval problem is that of finding the minimum value of a cost function. This function is based on a χ^2 distribution, which is a combination of the squared deviations between the measurements and the forward model and the retrieved state vector and the a priori state vector, each weighted by their associated uncertainties. The important benefits of ORAC, relative to more traditional retrieval methods, are that cloud parameters are retrieved using information in all satellite channels simultaneously, so that the retrieved parameters provide a robust representation of the short-wave and long-wave radiance effects of the observed cloud. The algorithm estimates the retrieval uncertainty, which quantifies the range of values that are feasible considering the uncertainty in the satellite measurements, ancillary data and ORAC forward model. For a more detailed description of the ORAC algorithm see part II of this publication (McGarragh et al., 2017c).

3.4 Post-processing

For each input pixel, the main processor evaluates these inputs twice, assuming different cloud phases (e.g. ice and liquid). In theory, ORAC could use the preprocessed cloud mask and phase to select an appropriate method to reduce processing time. The postprocessor will then select the appropriate output variables according to the Pavolonis cloud phase. As described in section 3.3.2, the postprocessor changes cloud phase in case retrieved CTT does not match the Pavolonis phase. Finally, output variables are written to primary and secondary NetCDF files (Table 05).

4 L2 data - initial analysis

We first examine CC4CL cloud properties for one sample scene that extends from approximately 100° W to 170° W and 45° N to 75° N over North America. We focus on the consistency of retrieval values derived from different sensors (AVHRR, MODIS, AATSR). This includes pixel-based uncertainties of the key variables (CTP, COT, CER, and cloud mask). We then perform an analysis of retrieved cloud properties, for which CALIPSO data are our reference. This comparison is limited to three high-latitude scenes for which collocations for all sensors with CALIOP are available.

4.1 CC4CL cloud properties

The sample scene (07/22/2008 20:58 LST) is characterized by various cloud types, and the CC4CL cloud mask defines a relatively small fraction as cloud free (Figures 03 to 06). Visually, similar spatial patterns are observed in the three products. The data show that there are more cloud free AVHRR pixels, which is related to the coarser spatial resolution compared to MODIS and AATSR. The LST difference is ≤ 5 minutes, so there is little cloud displacement between observations.

CTP data are approximately normally distributed for all three sensors. Both COT and CER show positive kurtosis and skewness, as values close to 0 are common. CER data are somewhat bimodal, having a primary peak at $\sim 12 \mu\text{m}$ and a secondary peak at $\sim 35 \mu\text{m}$ (Figure 08 and Table 06). These peaks probably correspond to liquid and ice phase clouds, respectively. Mean value differences are not significant between AVHRR and MODIS for CTP, MODIS and AATSR for COT, and AVHRR and AATSR for CER. The standard deviation of differences between two sensors are always lowest for AVHRR minus MODIS (Table 06). Significance tests of mean differences and standard deviations of residuals between sensor retrievals are sensitive to outliers. Although cloud displacement due to observation time differences is probably small, we cannot discard its influence on such outliers. Even though we found no significant relationship between sensor retrieval residuals and observation time difference (not shown), residuals are likely to be smaller and thus possibly insignificant if sensor observation times were identical. Moreover, even modest relative radiometric calibration differences between sensors of a couple percent could cause large retrieval differences, particularly for COT.

4.2 Uncertainties

Median absolute uncertainties are CTP = 26.7 hPa, COT = 6.1, CER = 2.0 μm , and cloud mask = 13.7 % (Figure 07). The median relative retrieval uncertainty (not shown) is relatively low for CTP and CER, but considerably larger for COT (CTP = 4.7 %, COT = 55.0 %, CER = 13.6 %). COT uncertainties increase with COT magnitude, and largest uncertainties are found in cases of opaque cloud coverage and cloud over sea-ice surfaces (Figure 04 middle and Figure 07 topright). CER results are similar to COT, although relative uncertainties are somewhat lower. Cloud-free areas show increased cloud mask uncertainties, particularly over sea-ice surface areas. Note that the cloud mask uncertainties have been quantified as a function of the normalized difference to the cloud mask threshold, whereas relative retrieval uncertainties ($100 \times \text{uncertainty} \div \text{retrieved value}$) are shown for CTP, COT, and CER.

4.3 Comparison with CALIOP

We found collocations between CALIOP, AVHRR, MODIS, and AATSR for three study areas in the Arctic at 07/22/2008 19:15 LST (study area North America 1 = NA1, $n = 120$, Figure 09, RGB channels: red = Ch4 solar component, green = Ch2, blue = Ch1), 07/22/2008 20:58 LST (NA2, $n = 163$, Figure 011), and 07/27/2008 08:10 LST (Siberia = SIB, $n = 116$, Figure 013). These are located within 60° to 75° N latitude, and contain vegetated land, snow-covered land, open ocean, and sea-ice surfaces. For NA1 and SIB, all CALIOP pixels were classified as cloud covered, while for NA2 about half of the pixels are cloud free.

When including AATSR, collocations are restricted to high latitude areas and by the narrow swath of AATSR. We thus decided to include another scene without AATSR data in the Gulf of Guinea/West Africa between 7° S and 12° N at 24/10/2009 13:45 LST (Africa = AFR, n = 1181, Figure 015). There, about ten times more pixels are available than in the other scenes and cloud systems not contained in the Arctic data are observed, such as low-level stratocumulus and deep convection.

5 We divided all study areas into logical sectors, for each of which a characteristic pattern of cloud coverage and type predominates. The analysis is shown for comparisons of CTH (derived from CTP) rather CTP (retrieved) to enable a more intuitive visualization and discussion. CTH is derived using the retrieval's atmospheric profile. An important caveat to note is the difference between physical and radiating cloud top. CALIOP uses an active sensor that is (roughly) sensitive to particle number. It identifies what we call the physical cloud top, denoted by the sharp increase in particle number. The passive radiometers
10 analysed using CC4CL are (roughly) sensitive to the temperature of the cloud, from which the height is calculated. However, TOA radiation is product of emission and scattering processes throughout the atmospheric column (Platnick, 2000). As there is no single height contributing, the retrieved CTT is more accurately described as an effective radiating pressure, being an average of the cloud's temperature profile weighted by the probability that a photon from each level can arrive at the detector. As a rule of thumb, the observed CTT represents the state one optical depth into the cloud. For the purposes of comparison
15 to CALIOP, CC4CL computes a 'corrected' CTH, which adjusts the retrieved CTH to where the physical cloud top would be expected, assuming an adiabatic profile.

4.3.1 Case studies

Case study NA1

Study area NA1 is a completely cloud-covered scene over northern Canada containing clear and ice-covered land and open
20 ocean surfaces (Figures 09 and 010). There are a variety of single and multi-layered clouds. CC4CL correctly classifies all pixels as cloud covered, with a few exceptions in sectors 3 and 4 (Figures 09 and 010). CTH retrievals are consistent between the three sensors, only differing in sector 2. CTH is generally lower than CALIOP's top layer height, unless the latter is optically thick as in sector 4. In the case of a (semi-)transparent cloud top layer, multiple surfaces (several cloud layers, Earth surface) contribute to the observed satellite data. CC4CL CTH is then located closer to, at, or even below the underlying cloud layer
25 (sectors 1, 3 and 2, respectively). For a single-layer cloud with COT > 1, CC4CL and CALIOP CTH agree very well (sector 4). Under such conditions, the retrieval is very accurate. Cloud phase agreement between CC4CL and CALIOP is very variable. It is best for optically thick high ice cloud coverage (sector 1), and worst for low water clouds (sector 4).

Case study NA2

Study area NA2 is located entirely over snow/ice free land in Western Canada. CALIOP cloud coverage is 4.5 %, spatially
30 broken, and variable in height and phase. Clear-sky pixels are mostly identified by CC4CL (69.3 % correct), and cloudy pixels are occasionally missed (78.7 % correct). CC4CL retrievals of thin high clouds and false positive cloudy pixels have low CTH

values (sector 1). Small-scale horizontal variability in CALIOP cloud phase is reflected by CC4CL data, which overestimate the fraction of liquid water clouds in sector 2. CC4CL reproduces CALIOP's spatial variability in CTH, which it slightly underestimates by 0.5–1 km in sector 2. In sector 3 CC4CL considerably underestimates CTH by up to 7 km. Most of these clouds are optically and geometrically thin.

5 Case study SIB

Study area SIB crosses the Novaya Zemlya islands north of Siberia and is defined by a mixture of open ocean and partially snow/ice covered land surfaces. According to both CALIOP and CC4CL, it is completely cloud covered.

In the event of single-layer cloudiness, CC4CL CTH agrees very well with CALIOP (sector 1 and, in particular, sector 3). The CTH difference between CC4CL retrievals increases in the presence of overlapping clouds (sector 2). There are optically thin but vertically thick (~4 km) clouds in sector 2. For these the retrieved CTH is considerably underestimated by ~6 km, which is probably a result of lower layer contributions that “contaminate” the satellite signals. Overall, about 62.3 % of CC4CL pixels agree with CALIOP phase. Phase mismatch occurs in cases of single layer optically thin clouds (sector 2) and, less frequently, stratiform cloudiness (sector 3).

Case study AFR

15 Study area AFR is located over the Gulf of Guinea and Western Africa, containing open ocean and snow/ice free land surfaces. As we excluded AATSR data, about 10 times more pixel collocations with CALIOP are available ($n = 1181$) than for previous cases. Additionally, measurements contain tropical and coastal cloud systems such as extensive low-level stratiform cloudiness and continental deep convection (Figure 015).

In general, the quantitative and qualitative agreement between CC4CL and CALIOP CTH is impressive. CC4CL data track 20 the spatial pattern of continental CTH very well (sector 3), which increases northwards and shows some small scale variability beyond 8° N. However, CC4CL underestimates CTH of vertically thick clouds and instead places the cloud top at a layer's vertical centre. The height of the stratiform cloud field is almost identical for CC4CL and CALIOP, although CTH of near-surface stratiform clouds is overestimated below thin high cirrus (sector 1). For the small layer located at 4 km height at ~ 6.7° S and the thin high cirrus layer around 2° S, MODIS retrieval values differ somewhat from CC4CL AVHRR and CALIOP. 25 Again, the phase of optically thick clouds is retrieved very well, which however is not the case for the thin ice cirrus clouds. Generally, CC4CL using the AVHRR heritage channel dataset are almost entirely insensitive to the very high, thin cloud layer in sector 1 (covering stratiform clouds) and 2 (covering the sea surface). Here, CC4CL is rather driven by contributions from very low clouds or the sea surface.

4.3.2 Summary of case studies

30 The four study areas clearly show that CC4CL retrievals of CTH are very close to CALIOP values for single layer, optically thick clouds. For significant extents of the regions presented, the CTH is accurate to within 240 m. For multi-layer clouds,

CC4CL estimates are almost exclusively located in between CALIOP's top and bottom layer estimates. For these cases, the optimal estimation algorithm processes satellite signals that are likely to contain radiance contributions from multiple cloud layers. The OE then optimizes the fit between modelled and observed radiances by placing the cloud lower in the atmospheric profile, and so the mixed nature of the satellite data leads to an underestimation of CTH. The results shown here are a representative sample from an extensive validation performed within the Cloud_cci project (Stengel et al., 2017).

There is no clear influence of the underlying land type or topography on retrieval values or the cloud mask. However, the limited sample size does not allow for generalizations. For site NA2, CALIOP identified cloud-free pixels, 69.3 % of which were also detected as cloud-free by CC4CL's neural network cloud mask, and with few exceptions as low level water clouds otherwise. In relatively few cases, CC4CL fails to detect clouds seen by CALIOP (% of missed clouds = 9.0 (NA1), 21.3 (NA2), 0.6 (SIB), 3.1 (AFR)). We did not account for fractional cloud coverage, as we set a grid box as cloud covered if any corresponding CC4CL pixel contains cloud information. As a consequence, there are slightly more cloud covered pixels for the spatially higher resolved MODIS and AATSR data than for AVHRR.

The CC4CL phase identification does not agree with any of the three CALIOP cloud flags consistently, which is reasonable given the differences between active and passive observations. After rounding CC4CL values to the nearest integer, the percentage of pixels with equal phase is lowest for the top layer at $COD > 0$ (NA1 = 49.9 %, NA2 = 32.2 %, SIB = 62.3 %, AFR = 53.0 %), but similar for the mid layer $COD > 0.15$ (NA1 = 53.1 %, NA2 = 46.5 %, SIB = 66.4 %, AFR = 94.7 %), and the bottom layer $COD > 1$ (NA1 = 47.3 %, NA2 = 57.4 %, SIB = 66.3 %, AFR = 91.1 %). These values however do show that phase determination performs very well if optically thick clouds dominate, as is the case for study area AFR. When averaged over all layers, phase agreement is largest for site AFR (79.6 %), followed by SIB (65.0 %), and clearly lower for NA1 (50.1 %) and NA2 (45.4 %).

For ice clouds, the most frequently occurring cloud types are cirrus (ID=6) for CALIOP and overlap (ID=8) or cirrus (ID=7) for CC4CL. Water cloud types are more heterogeneous and for CALIOP predominantly low transparent (ID=0), but altostratus (ID=5) and altocumulus (ID=4) are also frequent. CC4CL water clouds are approximately equally distributed amongst water (ID=3) and supercooled (ID=4) cloud types.

The scenes investigated and discussed here are just a small subset of the large variety of global cloudiness. We could only find collocations with AATSR data at high latitudes, where multi-layer cloud coverage is common. Under such difficult conditions, the retrieved CTH is a mixture of all radiatively contributing cloud layers. Please refer to Stengel et al. (2017) for a quantitative, global validation of CC4CL cloud properties.

5 Discussion

5.1 The flexibility of the optimal estimation approach

In general, the retrieved values are insensitive to the specific instrument evaluated. Absolute mean differences are ≤ 21.9 hPa for CTP, ≤ 1.3 for COT, and ≤ 2.1 for CER. These are mostly smaller than the mean retrieval uncertainties themselves. Moreover, the RGB images show that all major patterns of cloud coverage and structure are resolved by all three sensors.

However, AATSR data show larger deviations than the other sensors (Figure 08). It is unlikely that differences in spectral response functions are the reason. MODIS and AATSR heritage channels are relatively close in their spectral response but their retrieval values do differ considerably. Also, even though spectral response differences are largest between MODIS and AVHRR (which results in a reflectance difference of up to 30–40 % (Trishchenko et al., 2002), their retrieval values are much more similar. The difference between AATSR and both AVHRR and MODIS is largest for CER, so microphysical variables, which are derived from reflectance data only, appear to be most affected.”

The differences between mean values (μ_1 and μ_2) are almost always significant (t-Test p-value < 0.1 , $H_0: \mu_1 = \mu_2$). Thus, from a statistical point of view, the samples we analysed for AVHRR, MODIS, and AATSR have been drawn from different populations and are thus statistically inconsistent. In other words, the retrieval system should not produce statistically consistent cloud parameters when driven with spatiotemporally collocated satellite data obtained from three different sensors. However, differences in cloud conditions at the various observation times and sensor spatial resolution explain part of these discrepancies. Moreover, a non-significant t-Test result is possibly too strict a metric for estimating the consistency of retrieval results. There is a range of confounding processes that affect each individual retrieval estimate, such as observation times, spectral responses, calibration deficiencies, and a varying number of cloudy pixels to be compared. We did not quantify the contribution of each of these processes to overall retrieval differences when using different sensor data. Although we expect that spectral response differences are probably negligible, we still find it worth quantifying their impact, which was outside the scope of this paper and the ESA Cloud_cci project. The case studies clearly show that, under optimal conditions for single layer cloud retrievals, CC4CL products are consistent with CALIOP and practically insensitive to sensor characteristics.

We suggest that AVHRR and MODIS data can be used interchangeably, depending on the user’s application, such as model validation, data assimilation applications, or climate studies in general (Liu et al., 2017; Yang et al., 2016). AVHRR data provide long-term data records from 1982, however at a relatively coarse resolution of $5 \text{ km} \times 3 \text{ km}$. The MODIS data record started in 2000, and is thus too short to be considered a climatology. However, L1 data are available at 1 km resolution, and orbit control is guaranteed. With CC4CL, we also produced 0.05° lat/lon daily composites for Europe (data not shown), which is close to MODIS’s original resolution in that area. These data provide a more detailed view on cloud features than AVHRR. In that sense, CC4CL products retrieved from AVHRR and MODIS are complementary. More detailed analysis is required to assess differences in CC4CL output data when applied to AATSR data.

5.2 The value of uncertainty quantification

The retrieval uncertainties prove to be a valuable source of information. On the one hand, they are useful for several user applications, such as model validation, data assimilation applications, or climate studies in general (Liu et al., 2017; Yang et al., 2016). On the other hand, they allow for diagnosis of potential retrieval shortcomings. For example, we see that COT uncertainty scales with COT itself and is thus heteroscedastic (see also Poulsen et al. (2012)). CC4CL COT values are at times unnaturally large, and the associated uncertainty reflects that. Also, it highlights under which conditions the optimal estimator converges to a solution with a relatively large divergence from the measurements, which here are associated with optically thick clouds or underlying snow/ice cover (see also Kahn et al. (2015); Wang et al. (2011)). COT and CER uncertainties are clearly

largest, and reflect the limited information available with which to retrieve these values. For further possible explanations due to assumptions and limitations within the methodology applied, please see part II.

We applied an independent approach to quantify cloud mask uncertainty. It is valuable information, as a neural network does not provide output uncertainty. The approach we adopted here is straightforward. When the NN output, which is a pseudo CALIOP COD, approaches a defined threshold value for cloudiness, the uncertainty increases towards a maximum of 50 %. This maximum value indicates that a cloud mask value is basically random, as it is equally likely to be cloudy or cloud-free. With that in mind, the cloud mask uncertainty data are easy to interpret. For example, we see that sea-ice pixels classified as cloudy to the North of study area NA2 (Figure 07) show uncertainties of 40 - 50 %. This indicates that the NN is sensitive to bright ground cover, which may be confused with clouds. We suggest that users of ESA Cloud_cci data should routinely consult cloud mask uncertainties. If a more conservative cloud mask is required, it can be easily built by setting a maximum value for an acceptable uncertainty level.

5.3 Strengths and weaknesses

The results clearly show that CC4CL retrieves CTH of single layer, optically thick clouds with high accuracy and precision. When compared to CALIOP, the mean deviation for these cases is as low as 10–240 m CTH. This is a promising result, and shows that the optimal estimation framework is robust and appropriate for retrieving cloud properties from AVHRR heritage channels.

In the case of multi-layer clouds, CC4CL is not able to retrieve CTH of the top layer if it is optically thin. The estimate is somewhere between the two cloud pressure values. This is an expected limitation of our framework, and also of other retrieval algorithms using passive sensor data (Holz et al., 2008; Karlsson and Dybbroe, 2010). Poulsen et al. (2012) found that ORAC CTP and CER estimates are robust when the top ice cloud layer is > 5 optical depths, and otherwise they are the weighted average of several cloud layers. The AVHRR heritage channels do not provide sufficient information on retrieving cloud vertical structure. In the case of semi-transparent top-layer clouds, the upwelling signal, whether it stems from a cloud or the Earth's surface, contributes to the total TOA reflectance or brightness temperature. This mixed satellite measurement is input to CC4CL, which retrieves cloud parameters assuming a single cloud layer. As brightness temperatures and reflectances of, e.g., a cold, semi-transparent, bright top-layer cirrus cloud overlapping a warmer, opaque, and darker low-level water cloud, are a mix of several contributing surfaces, so will be the final retrieval value. Any CTH retrieved from AVHRR (heritage) data is the radiatively effective rather than physical cloud top (Karlsson et al., 2013). For CC4CL, we often see that the final CTH estimate is placed between top and lower levels and is thus an underestimate, which is a common problem amongst retrieval algorithms using passive sensor data (Watts et al., 2011; Holz et al., 2008; Karlsson et al., 2013).

Multi-layer cloud property retrievals have been developed (Watts et al., 2011), and we also implemented and tested such an approach within CC4CL (McGarragh et al., 2017b). However, this method requires MODIS channels beyond the AVHRR heritage set, and thus will not be applicable to a full AVHRR reprocessing. For ESA Cloud_cci, a conscious decision was made to trade spectral information for time series continuity. Thus, discontinuities due to changing spectral coverage within the entire dataset are avoided (Stengel et al., 2017). In addition, we introduced corrected estimates of CTP and the derived CTT and CTH

to get closer to the physical or geometrical cloud top. The correction is based on a vertical displacement of CTP along the atmospheric profile based on optical thickness and the cloud's extinction coefficient, which is a function of CER (McGarragh et al., 2017a). The correction is only made for ice phase clouds.

At first glance, estimates of cloud phase appear reasonable when compared to CALIOP. However, we find the best overall agreement of $\sim 65\%$ for the lower layers (cumulative COD > 0.15 or > 1). This is just slightly better than a random guess of cloud phase. Cloud phase is generally difficult to quantify, and estimates of various satellite derived products disagree considerably for that variable (Stengel et al., 2015). An evaluation of MODIS Collection 6 cloud phase yielded a total cloud phase agreement of over 90% with CALIOP. However, as the study is exclusively based on single-phase cloudy pixels, the performance of MODIS C6 as applied to multi-phase pixels is still unknown (Marchant et al., 2016). We also find very high scores for cloud phase determination if restricting the analysis to optically thick, spatially extensive cloud fields such as in study site AFR. There, cloud phase agrees with lower layer CALIOP estimates by as much as 95% .

The key problems for phase determination are vertical stratification and the lack of direct in-situ measurements of cloud phase. CALIOP observations, and also DARDAR (radar lidar, Ceccaldi et al. (2013)), are currently considered to be the most advanced estimates of cloud phase, relying on active measurement principles with depolarization and total attenuated backscatter at multiple wavelengths for additional constraints (Winker et al., 2009; Karlsson and Dybbroe, 2010). However, this assumption is primarily based on the physical theory underlying their retrievals, rather than on a comprehensive validation with independent observations of cloud phase.

Within CC4CL, we apply the Pavolonis algorithm for phase detection (Pavolonis et al., 2005). It was designed using simulated radiance data for varying phase, and further adjusted after analysis with real satellite data. The algorithm itself is a decision tree that contains a set of fixed threshold values for input reflectances and brightness temperatures, and was tuned to AVHRR. Even though we expect differences in phase determination between AVHRR vs. MODIS and AATSR due to varying spectral response functions, these were not large for the three study sites. Pavolonis et al. (2005) state that their product could not be validated due to the lack of direct observations, but rather underwent a consistency check with ground-based, independent estimates.

The relatively low degree of agreement between CC4CL and CALIOP is not satisfying if CALIOP is considered to be the truth. However, we refrain from concluding that the CC4CL phase estimate was unrealistic as, to date, no robust, spatially resolved in-situ observations are available and our comparisons included multi-layered cloud conditions. It is difficult to determine the representative CALIOP cloud layer when validating a passive sensor retrieval. For single layer, optically thick clouds, CC4CL can be compared with any layer exceeding a cumulative optical thickness of 0 or 1. If such a cloud layer was covered by optically and geometrically thin cirrus clouds, the satellite data are still dominated by lower cloud level reflectance and, in particular, emittance. Consequently, Pavolonis cloud phase is not a top layer estimate in such cases. For study area AFR, we also found situations where the NN cloud mask, which was trained with CALIOP data, correctly identifies thin high cirrus as cloud over ocean but the cloud type algorithm failed to identify its ice phase. One potential improvement would be to use the NN to provide an estimate of cloud phase. Initial tests indicated that this approach would indeed improve the (global) agreement with CALIOP, which is to be expected, as the NN is trained with CALIOP data. However, no estimate of cloud type

would be provided. It would also be worth investigating the relationship between the quality of retrieved variables (CTH, COT, CER, cloud phase) and cloud mask uncertainty.

CALIOP data are considered to be the current benchmark of cloud detection, vertical structure, and phase (Winker et al., 2009; Karlsson and Johansson, 2013; Holz et al., 2008), and are – except for the cloud mask – a source of validation with absolute independence from CC4CL. The main limitation of CALIOP though is its narrow view, so that global coverage is very limited. Also, the instrument is only able to probe the full geometrical depth of clouds whose total optical thickness is not larger than about 3–5 (Karlsson and Johansson, 2013). We found no clear relationship between CC4CL CTP uncertainty and the difference between CC4CL CTP and CALIOP CTP (data not shown). This suggests that the AVHRR heritage channels provide independent information on cloud vertical structure that is not clearly related to CALIOP’s CTP estimates. Retrieval uncertainty is estimated using only well-understood error sources (e.g. measurement and forward model error), neglecting errors due to model assumptions (e.g. the complex, real vertical structure). Such errors can be approximated through validation activities and are not currently believed to be significant in most circumstances.

6 Conclusions

We have shown that CC4CL is a robust and flexible framework for producing cloud products from passive satellite sensor data. Differences between retrieved values for collocated satellite data are smaller than estimated uncertainties for AVHRR, MODIS, and AATSR. ESA Cloud_cci data provide climatologies (AVHRR) as well as highly resolved snap-shots for selected regions (e.g. Europe, MODIS). The complete sensor set of CC4CL data forms a unique, coherent, long-term, multi-instrument cloud property product that exploits synergistic capabilities of several EO missions. Compared to single sensor retrievals, CC4CL data are improved in terms of accuracy and spatiotemporal sampling.

CC4CL explicitly estimates retrieval uncertainties according to the principles of error propagation through optimal estimation theory. These uncertainties are a valuable source for model validation, data assimilation, climate studies, or retrieval diagnosis. Cloud mask uncertainty is a novel feature that enables the user to assess product quality and to create individualized cloud masks.

We find that CC4CL is limited by weaknesses that are common to passive sensor cloud product retrievals. In general, an initial comparison against CALIOP data shows that the CTH of optically thin clouds is underestimated. In the case of multi-layer clouds, the retrieved CTH is a mixture of all radiatively contributing cloud layers. The AVHRR heritage channels do not provide sufficient physical information that would allow for detailed retrievals of cloud vertical structure. Moreover, the forward cloud model is structurally incomplete, as it assumes a single-plane cloud layer. A multi-layer cloud property retrieval has been added to CC4CL, but is only applicable to MODIS data.

To account for CTH underestimation, we implemented a correction for CTH that assumes that passive sensor data see beyond the top into the clouds up to a penetration depth of ~ 1 optical depth. Corrected cloud top values are stored as separate variables within CC4CL output files.

Similarly, we find that the cloud phase estimate is only accurate for optimal retrieval conditions (optically thick top clouds). In a subsequent reprocessing of the AVHRR data record, we replaced the Pavolonis et al. (2005) algorithm with a neural network cloud phase estimation with better performance scores.

Under optimal conditions for single layer cloud retrievals, CC4CL products show little sensitivity to sensor characteristics.

- 5 Single layer, optically thick cloud retrievals are very accurate when compared against CALIOP (bias < 240 m), which emphasizes the maturity and robustness of CC4CL. We thus recommend ESA Cloud_cci data to be used for multi-annual studies of cloud parameters and more detailed assessments of regional patterns and diurnal variability.

Acknowledgements. NASA kindly provided MODIS Collection 6 radiance data. ECMWF kindly provided support and assistance with their computing facilities for development and processing. This research/work was supported by the European Space Agency through the

- 10 Cloud_cci project (contract No.: 4000109870/13/I-NB).

References

- Baum, B. A., Menzel, W. P., Frey, R. A., Tobin, D. C., Holz, R. E., Ackerman, S. A., Heidinger, A. K., and Yang, P.: MODIS Cloud-Top Property Refinements for Collection 6, *Journal of Applied Meteorology and Climatology*, 51, 1145–1163, <https://doi.org/10.1175/JAMC-D-11-0203.1>, 2012.
- 5 Berrisford, P., Dee, D., Poli, P., Brugge, R., Fielding, K., Fuentes, M., Kållberg, P., Kobayashi, S., Uppala, S., and Simmons, A.: The ERA-Interim archive Version 2.0, Shinfield Park, Reading, 2011.
- CDO: Climate Data Operators, <http://www.mpimet.mpg.de/cdo>, 2015.
- Ceccaldi, M., Delanoë, J., Hogan, R. J., Pounder, N. L., Protat, A., and Pelon, J.: From CloudSat-CALIPSO to EarthCare: Evolution of the DARDAR cloud classification and its comparison to airborne radar-lidar observations, *Journal of Geophysical Research: Atmospheres*, 118, 7962–7981, <https://doi.org/10.1002/jgrd.50579>, 2013.
- 10 Christensen, M. W., Stephens, G. L., and Lebsack, M. D.: Exposing biases in retrieved low cloud properties from CloudSat: A guide for evaluating observations and climate data, *Journal of Geophysical Research: Atmospheres*, 118, 12,120–12,131, <https://doi.org/10.1002/2013JD020224>, 2013.
- CM SAF: The Satellite Application Facility on Climate Monitoring, <http://www.cmsaf.eu>, accessed: Oct 13, 2015.
- 15 Comiso, J. C. and Hall, D. K.: Climate trends in the Arctic as observed from space, *Wiley Interdisciplinary Reviews: Climate Change*, 5, 389–409, <https://doi.org/10.1002/wcc.277>, 2014.
- Dee, D. P., Uppala, S. M., Simmons, A. J., Berrisford, P., Poli, P., Kobayashi, S., Andrae, U., Balmaseda, M. A., Balsamo, G., Bauer, P., Bechtold, P., Beljaars, A. C. M., van de Berg, L., Bidlot, J., Bormann, N., Delsol, C., Dragani, R., Fuentes, M., Geer, A. J., Haimberger, L., Healy, S. B., Hersbach, H., Hólm, E. V., Isaksen, L., Kållberg, P., Köhler, M., Matricardi, M., McNally, A. P., Monge-Sanz, 20 B. M., Morcrette, J.-J., Park, B.-K., Peubey, C., de Rosnay, P., Tavolato, C., Thépaut, J.-N., and Vitart, F.: The ERA-Interim reanalysis: configuration and performance of the data assimilation system, *Quarterly Journal of the Royal Meteorological Society*, 137, 553–597, <https://doi.org/10.1002/qj.828>, 2011.
- Devasthale, A., Raspaud, M., and Schlundt, C.: PyGAC: an open-source, community-driven Python interface to preprocess more than 30-year AVHRR Global Area Coverage (GAC) data, in preparation, 2017.
- 25 ESA CCI: The ESA Climate Change Initiative, <http://cci.esa.int/>, accessed: Oct 13, 2015.
- Hamann, U., Walther, A., Baum, B., Bennartz, R., Bugliaro, L., Derrien, M., Francis, P. N., Heidinger, A., Joro, S., Kniffka, A., Le Gléau, H., Lockhoff, M., Lutz, H.-J., Meirink, J. F., Minnis, P., Palikonda, R., Roebeling, R., Thoss, A., Platnick, S., Watts, P., and Wind, G.: Remote sensing of cloud top pressure/height from SEVIRI: analysis of ten current retrieval algorithms, *Atmospheric Measurement Techniques*, 7, 2839–2867, <https://doi.org/10.5194/amt-7-2839-2014>, 2014.
- 30 Han, Q., Rossow, W. B., and Lacis, A. A.: Near-Global Survey of Effective Droplet Radii in Liquid Water Clouds Using ISCCP Data, *Journal of Climate*, 7, 465–497, [https://doi.org/10.1175/1520-0442\(1994\)007<0465:NGSOED>2.0.CO;2](https://doi.org/10.1175/1520-0442(1994)007<0465:NGSOED>2.0.CO;2), 1994.
- Heidinger, A. K. and Pavolonis, M. J.: Gazing at Cirrus Clouds for 25 Years through a Split Window. Part I: Methodology, *Journal of Applied Meteorology and Climatology*, 48, 1100, <https://doi.org/10.1175/2008JAMC1882.1>, 2009.
- Heidinger, A. K., Evan, A. T., Foster, M. J., and Walther, A.: A Naive Bayesian Cloud-Detection Scheme Derived from CALIPSO and Applied within PATMOS-x, *Journal of Applied Meteorology and Climatology*, 51, 1129–1144, <https://doi.org/10.1175/JAMC-D-11-02.1>, 35 2012.

- Heidinger, A. K., Foster, M. J., Walther, A., and Zhao, X.: The Pathfinder Atmospheres–Extended AVHRR Climate Dataset, *Bulletin of the American Meteorological Society*, 95, 909–922, <https://doi.org/10.1175/BAMS-D-12-00246.1>, 2013.
- Hollmann, R., Merchant, C. J., Saunders, R., Downy, C., Buchwitz, M., Cazenave, A., Chuvieco, E., Defourny, P., de Leeuw, G., Forberg, R., Holzer-Popp, T., Paul, F., Sandven, S., Sathyendranath, S., van Roozendaal, M., and Wagner, W.: The ESA Climate Change Initiative: Satellite Data Records for Essential Climate Variables, *Bulletin of the American Meteorological Society*, 94, 1541–1552, <https://doi.org/10.1175/BAMS-D-11-00254.1>, 2013.
- Holz, R. E., Ackerman, S. A., Nagle, F. W., Frey, R., Dutcher, S., Kuehn, R. E., Vaughan, M. A., and Baum, B.: Global Moderate Resolution Imaging Spectroradiometer (MODIS) cloud detection and height evaluation using CALIOP, *Journal of Geophysical Research: Atmospheres*, 113, <https://doi.org/10.1029/2008JD009837>, 2008.
- 10 IPCC: Summary for Policymakers, book section SPM, p. 1–30, Cambridge University Press, Cambridge, United Kingdom and New York, NY, USA, <https://doi.org/10.1017/CBO9781107415324.004>, www.climatechange2013.org, 2013.
- Jacobowitz, H., Stowe, L. L., Ohring, G., Heidinger, A., Knapp, K., and Nalli, N. R.: The Advanced Very High Resolution Radiometer Pathfinder Atmosphere (PATMOS) Climate Dataset: A Resource for Climate Research, *Bulletin of the American Meteorological Society*, 84, 785–793, <https://doi.org/10.1175/BAMS-84-6-785>, 2003.
- 15 Kahn, B. H., Schreier, M. M., Yue, Q., Fetzer, E. J., Irion, F. W., Platnick, S., Wang, C., Nasiri, S. L., and L’Ecuyer, T. S.: Pixel-scale assessment and uncertainty analysis of AIRS and MODIS ice cloud optical thickness and effective radius, *Journal of Geophysical Research: Atmospheres*, 120, 11,669–11,689, <https://doi.org/10.1002/2015JD023950>, 2015.
- Karlsson, K.-G. and Dybbroe, A.: Evaluation of Arctic cloud products from the EUMETSAT Climate Monitoring Satellite Application Facility based on CALIPSO-CALIOP observations, *Atmospheric Chemistry and Physics*, 10, 1789–1807, [https://doi.org/10.5194/acp-10-](https://doi.org/10.5194/acp-10-1789-2010)
- 20 1789-2010, 2010.
- Karlsson, K.-G. and Johansson, E.: On the optimal method for evaluating cloud products from passive satellite imagery using CALIPSO-CALIOP data: example investigating the CM SAF CLARA-A1 dataset, *Atmospheric Measurement Techniques*, 6, 1271–1286, <https://doi.org/10.5194/amt-6-1271-2013>, 2013.
- Karlsson, K.-G., Riihelä, A., Müller, R., Meirink, J. F., Sedlar, J., Stengel, M., Lockhoff, M., Trentmann, J., Kaspar, F., Hollmann, R., and
- 25 Wolters, E.: CLARA-A1: a cloud, albedo, and radiation dataset from 28 yr of global AVHRR data, *Atmospheric Chemistry and Physics*, 13, 5351–5367, <https://doi.org/10.5194/acp-13-5351-2013>, 2013.
- Karlsson, K.-G., Sedlar, J., Devasthale, A., Stengel, M., Hanschmann, T., Meirink, J. F., Benas, N., and van Zadelhoff, G.-J.: Validation Report – CM SAF Cloud, Albedo, Radiation data record, AVHRR-based, Edition 2 (CLARA-A2) – Cloud Products, Tech. Rep. 2.3, EUMETSAT Satellite Application Facility on Climate Monitoring, https://doi.org/10.5676/EUM_SAF_CM/CLARA_AVHRR/V002, 2016.
- 30 Kiehl, J. and Trenberth, K. E.: Earth’s annual global mean energy budget, *Bulletin of the American Meteorological Society*, 78, 197–208, 1997.
- King, M., Kaufman, Y., Menzel, W., and Tanre, D.: Remote sensing of cloud, aerosol, and water vapor properties from the moderate resolution imaging spectrometer (MODIS), *Geoscience and Remote Sensing, IEEE Transactions on*, 30, 2–27, <https://doi.org/10.1109/36.124212>, 1992.
- 35 Laszlo, I., Stamnes, K., Wiscombe, W. J., and Tsay, S.-C.: The Discrete Ordinate Algorithm, DISORT for Radiative Transfer, pp. 3–65, Springer Berlin Heidelberg, Berlin, Heidelberg, https://doi.org/10.1007/978-3-662-49538-4_1, 2016.

- Liu, C., Allan, R. P., Mayer, M., Hyder, P., Loeb, N. G., Roberts, C. D., Valdivieso, M., Edwards, J. M., and Vidale, P.: Evaluation of satellite and reanalysis-based global net surface energy flux and uncertainty estimates, *Journal of Geophysical Research: Atmospheres*, 122, 6250–6272, <https://doi.org/10.1002/2017JD026616>, 2017.
- Lucht, W.: Expected retrieval accuracies of bidirectional reflectance and albedo from EOS-MODIS and MISR angular sampling, *Journal of Geophysical Research: Atmospheres*, 103, 8763–8778, <https://doi.org/10.1029/98JD00089>, 1998.
- Marchant, B., Platnick, S., Meyer, K., Arnold, G. T., and Riedi, J.: MODIS Collection 6 shortwave-derived cloud phase classification algorithm and comparisons with CALIOP, *Atmospheric Measurement Techniques*, 9, 1587–1599, <https://doi.org/10.5194/amt-9-1587-2016>, 2016.
- McGarragh, G., Poulsen, C., Christensen, M., Sus, O., Povey, A., Proud, S., and Grainger, R.: On the retrieval of cloud top pressure of semi-transparent clouds: Methods and radiative consistency, To be submitted to: *Journal of the Atmospheric Sciences*, 2017a.
- McGarragh, G., Poulsen, C., Siddans, R., Povey, A., Proud, S., Thomas, G., and Grainger, R.: Optimal Retrieval of Aerosol and Cloud (ORAC): the multilayer cloud retrieval, To be submitted to: *Atmospheric Measurement Techniques*, 2017b.
- McGarragh, G. R., Poulsen, C. A., Thomas, G. E., Povey, A. C., Sus, O., Schlundt, C., Stapelberg, S., Proud, S., Christensen, M. W., Stengel, M., Hollmann, R., and Grainger, R. G.: The Community Cloud retrieval for CLimate (CC4CL). Part II: The optimal estimation approach, To be submitted to: *Atmospheric Measurement Techniques*, 2017c.
- Menzel, W. P., Frey, R. A., and Baum, B. A.: Cloud top properties and cloud phase algorithm theoretical basis document, 2010.
- Merchant, C. J., Embury, O., Rayner, N. A., Berry, D. I., Corlett, G. K., Lean, K., Veal, K. L., Kent, E. C., Llewellyn-Jones, D. T., Remedios, J. J., and Saunders, R.: A 20 year independent record of sea surface temperature for climate from Along-Track Scanning Radiometers, *Journal of Geophysical Research: Oceans*, 117, <https://doi.org/10.1029/2012JC008400>, c12013, 2012.
- Minnis, P., Sun-Mack, S., Young, D. F., Heck, P. W., Garber, D. P., Chen, Y., Spangenberg, D. A., Arduini, R. F., Trepte, Q. Z., Smith, W. L., Ayers, J. K., Gibson, S. C., Miller, W. F., Hong, G., Chakrapani, V., Takano, Y., Liou, K. N., Xie, Y., and Yang, P.: CERES Edition-2 Cloud Property Retrievals Using TRMM VIRS and Terra and Aqua MODIS Data – Part I: Algorithms, *IEEE Transactions on Geoscience and Remote Sensing*, 49, 4374–4400, <https://doi.org/10.1109/TGRS.2011.2144601>, 2011.
- MODIS Characterization Support Team: MODIS Level 1B Product User's Guide, NASA Goddard Space Flight Center, 2009.
- Nakajima, T. and King, M. D.: Determination of the Optical Thickness and Effective Particle Radius of Clouds from Reflected Solar Radiation Measurements. Part I: Theory, *Journal of the Atmospheric Sciences*, 47, 1878–1893, [https://doi.org/10.1175/1520-0469\(1990\)047<1878:DOTOTA>2.0.CO;2](https://doi.org/10.1175/1520-0469(1990)047<1878:DOTOTA>2.0.CO;2), 1990.
- NASA LP DAAC: MOD02 Level-1B Calibrated Geolocation Data Set. Version 6. NASA EOSDIS Land Processes DAAC, USGS Earth Resources Observation and Science (EROS) Center, Sioux Falls, South Dakota, http://modis.gsfc.nasa.gov/data/dataproduct/dataproducts.php?MOD_NUMBER=02, <https://doi.org/http://dx.doi.org/10.5067/MODIS/MOD021KM.006>, accessed: May 25, 2015.
- Natural Environment Research Council, NERC CWVC GRAPE campaign participants, and Grainger, D.: Global Cloud and Aerosol Dataset Produced by the Global Retrieval of ATSR Cloud Parameters and Evaluation (GRAPE) Project as part of the Clouds, Water Vapour and Climate (CWVC) Programme. NCAS British Atmospheric Data Centre, <http://catalogue.ceda.ac.uk/uuid/cf7ae349d16c067cd00d3d2d910bee89>, accessed: Oct 13, 2015.
- Norris, J. R., Allen, R. J., Evan, A. T., Zelinka, M. D., O'Dell, C. W., and Klein, S. A.: Evidence for climate change in the satellite cloud record, *Nature*, 536, 72–75, <https://doi.org/10.1038/nature18273>, 2016.
- Pavolonis, M. J., Heidinger, A. K., and Uttal, T.: Daytime Global Cloud Typing from AVHRR and VIIRS: Algorithm Description, Validation, and Comparisons, *Journal of Applied Meteorology*, 44, 804–826, 2005.

- Platnick, S.: Vertical photon transport in cloud remote sensing problems, *Journal of Geophysical Research: Atmospheres*, 105, 22 919–22 935, <https://doi.org/10.1029/2000JD900333>, 2000.
- Platnick, S., Meyer, K. G., King, M. D., Wind, G., Amarasinghe, N., Marchant, B., Arnold, G. T., Zhang, Z., Hubanks, P. A., Holz, R. E., Yang, P., Ridgway, W. L., and Riedi, J.: The MODIS Cloud Optical and Microphysical Products: Collection 6 Updates and Examples From Terra and Aqua, *IEEE Transactions on Geoscience and Remote Sensing*, 55, 502–525, <https://doi.org/10.1109/TGRS.2016.2610522>, 2017.
- Poulsen, C. A., Siddans, R., Thomas, G. E., Sayer, A. M., Grainger, R. G., Campmany, E., Dean, S. M., Arnold, C., and Watts, P. D.: Cloud retrievals from satellite data using optimal estimation: evaluation and application to ATSR, *Atmospheric Measurement Techniques*, 5, 1889–1910, <https://doi.org/10.5194/amt-5-1889-2012>, 2012.
- Rodgers, C. D.: *Inverse methods for atmospheric sounding: theory and practice*, vol. 2, World Scientific, Singapore, 2009.
- Rossow, W. B. and Schiffer, R. A.: Advances in understanding clouds from ISCCP, *Bulletin of the American Meteorological Society*, 80, 2261–2287, 1999.
- Sanchez-Lorenzo, A., Enriquez-Alonso, A., Calbó, J., González, J.-A., Wild, M., Folini, D., Norris, J. R., and Vicente-Serrano, S. M.: Fewer clouds in the Mediterranean: consistency of observations and climate simulations, *Scientific Reports*, 7, <https://doi.org/10.1038/srep41475>, 2017.
- Sayer, A. M., Thomas, G. E., and Grainger, R. G.: A sea surface reflectance model for (A)ATSR, and application to aerosol retrievals, *Atmospheric Measurement Techniques*, 3, 813–838, <https://doi.org/10.5194/amt-3-813-2010>, 2010.
- Schaaf, C. and Wang, Z.: MCD43C1 MODIS/Terra+Aqua BRDF/AlbedoModel Parameters Daily L3 Global 0.05Deg CMG V006, NASA EOSDIS Land Processes DAAC, <https://doi.org/10.5067/MODIS/MCD43C1.006>, 2015.
- Schulz, J., Albert, P., Behr, H.-D., Caprion, D., Deneke, H., Dewitte, S., Dürr, B., Fuchs, P., Gratzki, A., Hechler, P., Hollmann, R., Johnston, S., Karlsson, K.-G., Manninen, T., Müller, R., Reuter, M., Riihelä, A., Roebeling, R., Selbach, N., Tetzlaff, A., Thomas, W., Werscheck, M., Wolters, E., and Zelenka, A.: Operational climate monitoring from space: the EUMETSAT Satellite Application Facility on Climate Monitoring (CM-SAF), *Atmospheric Chemistry and Physics*, 9, 1687–1709, <https://doi.org/10.5194/acp-9-1687-2009>, 2009.
- Seemann, S. W., Borbas, E. E., Knuteson, R. O., Stephenson, G. R., and Huang, H.-L.: Development of a Global Infrared Land Surface Emissivity Database for Application to Clear Sky Sounding Retrievals from Multispectral Satellite Radiance Measurements, *Journal of Applied Meteorology and Climatology*, 47, 108–123, <https://doi.org/10.1175/2007JAMC1590.1>, 2008.
- Stengel, M., Mieruch, S., Jerg, M., Karlsson, K.-G., Scheirer, R., Maddux, B., Meirink, J., Poulsen, C., Siddans, R., Walther, A., and Hollmann, R.: The Clouds Climate Change Initiative: Assessment of state-of-the-art cloud property retrieval schemes applied to AVHRR heritage measurements, *Remote Sensing of Environment*, 162, 363–379, <https://doi.org/10.1016/j.rse.2013.10.035>, 2015.
- Stengel, M., Stapelberg, S., Sus, O., Schlundt, C., Poulsen, C., Thomas, G., Christensen, M., Carbajal Henken, C., Preusker, R., Fischer, J., Devasthale, A., Willén, U., Karlsson, K.-G., McGarragh, G. R., Proud, S., Povey, A. C., Grainger, D. G., Meirink, J. F., Feofilov, A., Bennartz, R., Bojanowski, J., and Hollmann, R.: Cloud property datasets retrieved from AVHRR, MODIS, AATSR and MERIS in the framework of the Cloud_cci project, *Earth System Science Data Discussions*, 2017, 1–34, <https://doi.org/10.5194/essd-2017-48>, 2017.
- Stengel, M., Stapelberg, S., Schlundt, C., Karlsson, K.-G., Meirink, J. F., Poulsen, C., Bojanowski, J., Stöckli, R., and Hollmann, R.: ESA Cloud CCI - Product Validation and Intercomparison Report, Tech. Rep. 5.1, ESA Climate Change Initiative - Cloud CCI, 2018.
- Stephens, G. L., Li, J., Wild, M., Clayson, C. A., Loeb, N., Kato, S., L'ecuyer, T., Stackhouse Jr, P. W., Lebsock, M., and Andrews, T.: An update on Earth's energy balance in light of the latest global observations, *Nature Geoscience*, 5, 691, 2012.

- Sun, B., Free, M., Yoo, H. L., Foster, M. J., Heidinger, A., and Karlsson, K.-G.: Variability and Trends in U.S. Cloud Cover: IS-CCP, PATMOS-x, and CLARA-A1 Compared to Homogeneity-Adjusted Weather Observations, *Journal of Climate*, 28, 4373–4389, <https://doi.org/10.1175/JCLI-D-14-00805.1>, 2015.
- Thomas, G. E., Carboni, E., Sayer, A. M., Poulsen, C. A., Siddans, R., and Grainger, R. G.: Oxford-RAL Aerosol and Cloud (ORAC): aerosol retrievals from satellite radiometers, in: *Satellite Aerosol Remote Sensing over Land*, edited by Kokhanovsky, A. and de Leeuw, G., Springer Praxis Books, pp. 193–225, Springer, Berlin, Heidelberg, https://doi.org/10.1007/978-3-540-69397-0_7, 2009a.
- Thomas, G. E., Poulsen, C. A., Sayer, A. M., Marsh, S. H., Dean, S. M., Carboni, E., Siddans, R., Grainger, R. G., and Lawrence, B. N.: The GRAPE aerosol retrieval algorithm, *Atmospheric Measurement Techniques*, 2, 679–701, <https://doi.org/10.5194/amt-2-679-2009>, 2009b.
- Trishchenko, A. P., Cihlar, J., and Li, Z.: Effects of spectral response function on surface reflectance and NDVI measured with moderate resolution satellite sensors, *Remote Sensing of Environment*, 81, 1–18, [https://doi.org/10.1016/S0034-4257\(01\)00328-5](https://doi.org/10.1016/S0034-4257(01)00328-5), 2002.
- U.S. Geological Survey: The ESA Climate Change Initiative, https://lta.cr.usgs.gov/glcc/globe_int/, accessed: Sep 2, 2016.
- Walther, A. and Heidinger, A. K.: Implementation of the Daytime Cloud Optical and Microphysical Properties Algorithm (DCOMP) in PATMOS-x, *Journal of Applied Meteorology and Climatology*, 51, 1371–1390, <https://doi.org/10.1175/JAMC-D-11-0108.1>, 2012.
- Wang, C., Yang, P., Baum, B. A., Platnick, S., Heidinger, A. K., Hu, Y., and Holz, R. E.: Retrieval of Ice Cloud Optical Thickness and Effective Particle Size Using a Fast Infrared Radiative Transfer Model, *Journal of Applied Meteorology and Climatology*, 50, 2283–2297, <https://doi.org/10.1175/JAMC-D-11-067.1>, 2011.
- Watts, P. D., Bennartz, R., and Fell, F.: Retrieval of two-layer cloud properties from multispectral observations using optimal estimation, *Journal of Geophysical Research: Atmospheres*, 116, <https://doi.org/10.1029/2011JD015883>, 2011.
- Willett, K., Alexander, L., and Thorne, P.: Global climate, in: *State of the Climate in 2009*, edited by Arndt, D. S., Baringer, M. O., and Johnson, M. R., vol. 91, pp. 19–52, <https://doi.org/10.1175/BAMS-91-7-StateoftheClimate>, 2010.
- Winker, D. M., Vaughan, M. A., Omar, A., Hu, Y., Powell, K. A., Liu, Z., Hunt, W. H., and Young, S. A.: Overview of the CALIPSO mission and CALIOP data processing algorithms, *Journal of Atmospheric and Oceanic Technology*, 26, 2310–2323, <https://doi.org/10.1175/2009JTECHA1281.1>, 2009.
- Xiong, X., Wenny, B. N., and Barnes, W. L.: Overview of NASA Earth Observing Systems Terra and Aqua moderate resolution imaging spectroradiometer instrument calibration algorithms and on-orbit performance, *Journal of Applied Remote Sensing*, 3, 032 501–032 501–25, <https://doi.org/10.1117/1.3180864>, 2009.
- Yang, J., Gong, P., Fu, R., Zhang, M., Chen, J., Liang, S., Xu, B., Shi, J., and Dickinson, R.: The role of satellite remote sensing in climate change studies, *Nature Clim. Change*, 3, 875–883, 2013.
- Yang, Q., Losch, M., Losa, S. N., Jung, T., Nerger, L., and Lavergne, T.: Brief communication: The challenge and benefit of using sea ice concentration satellite data products with uncertainty estimates in summer sea ice data assimilation, *The Cryosphere*, 10, 761–774, <https://doi.org/10.5194/tc-10-761-2016>, 2016.

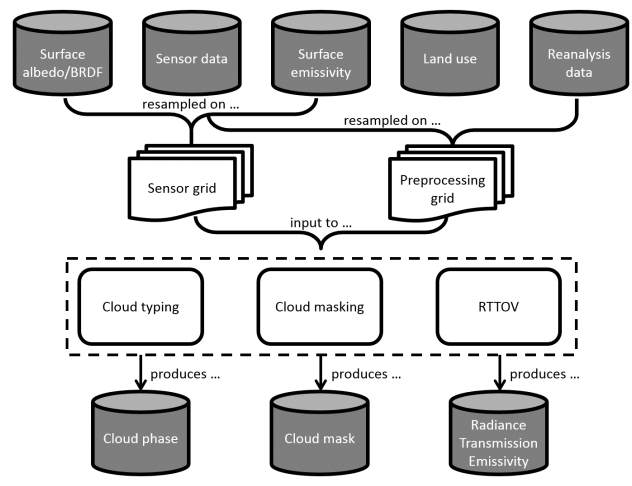


Figure 01. Schematic of the CC4CL preprocessor.

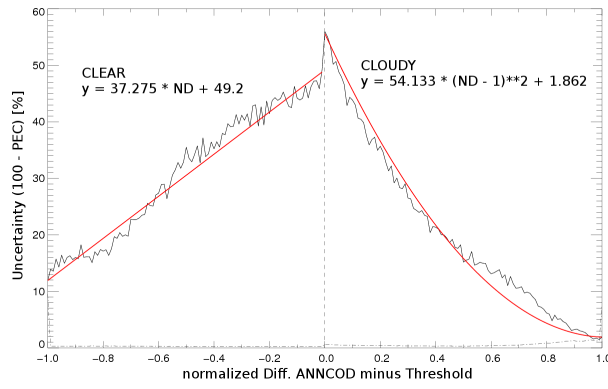


Figure 02. Neural network cloud mask uncertainty as derived from observations.

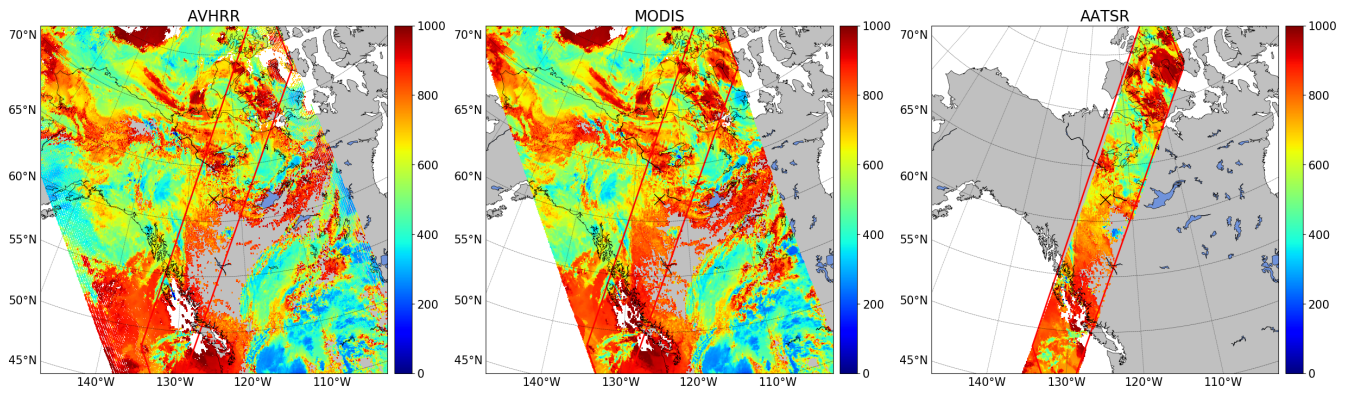


Figure 03. CTP retrieval values for study area NA2 with data from AVHRR (left), MODIS (middle), and AATSR (right).

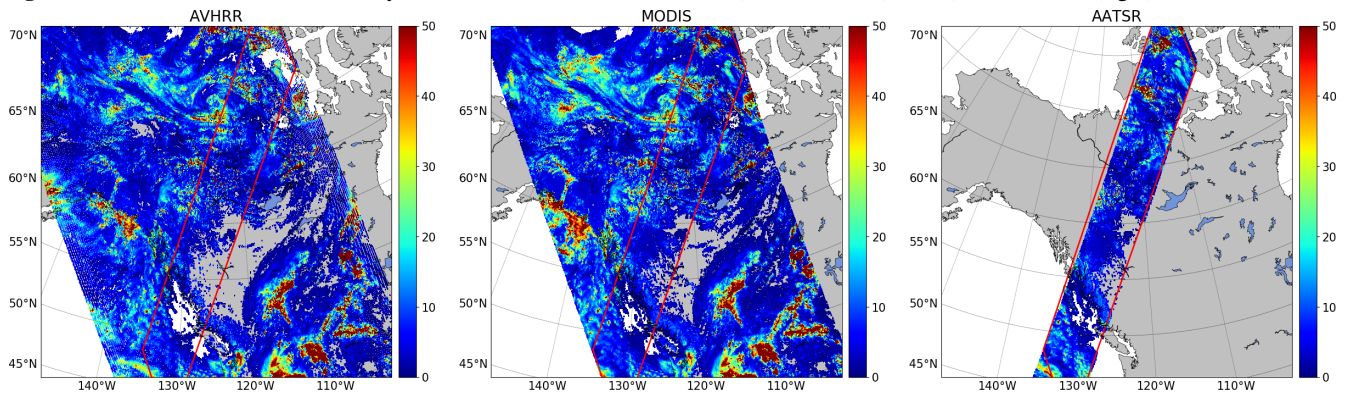


Figure 04. COT retrieval values for study area NA2 with data from AVHRR (left), MODIS (middle), and AATSR (right).

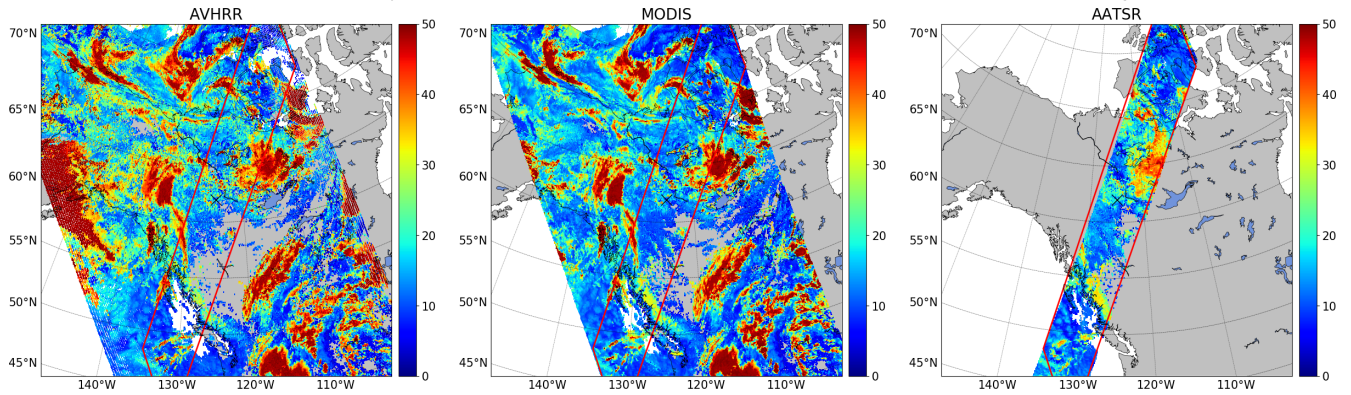


Figure 05. CER retrieval values for study area NA2 with data from AVHRR (left), MODIS (middle), and AATSR (right).

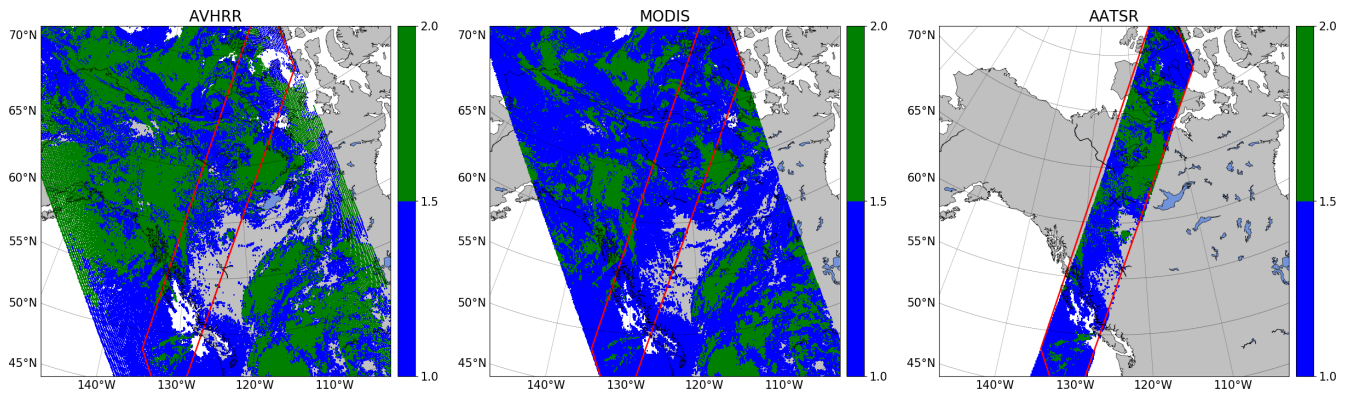


Figure 06. Cloud phase retrieval values for study area NA2 with data from AVHRR (left), MODIS (middle), and AATSR (right).

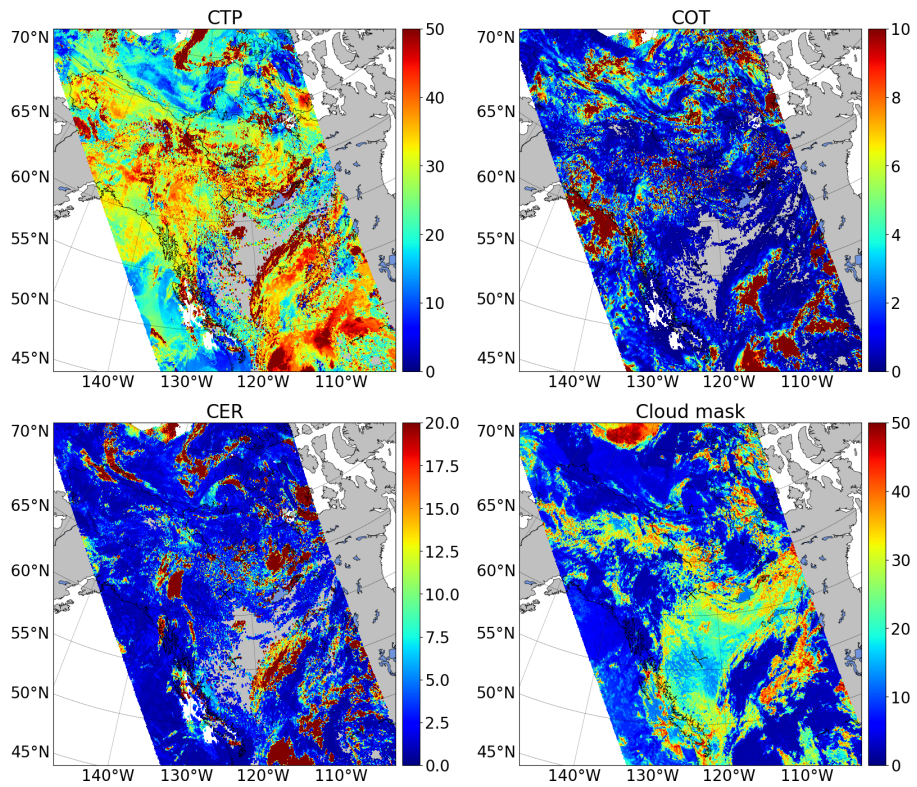


Figure 07. Absolute uncertainties of MODIS AQUA retrieval data for study area NA2 and CTP [hPa], COT, CER [μm], and Cloud mask [%].

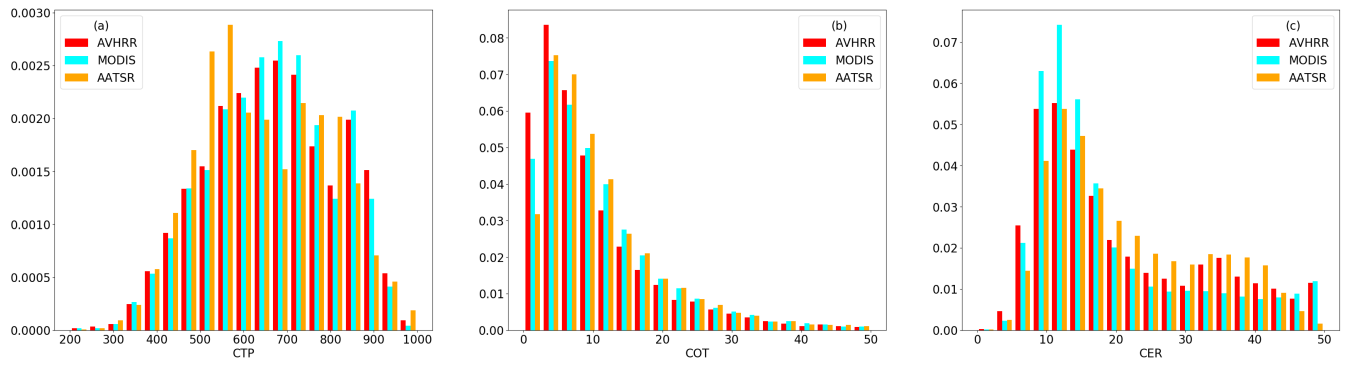


Figure 08. Density histograms of NOAA18 (N18), MODIS AQUA (MYD), and AATSR (ENV) retrieval data for study area NA2 and (a) CTP, (b) COT, and (c) CER.

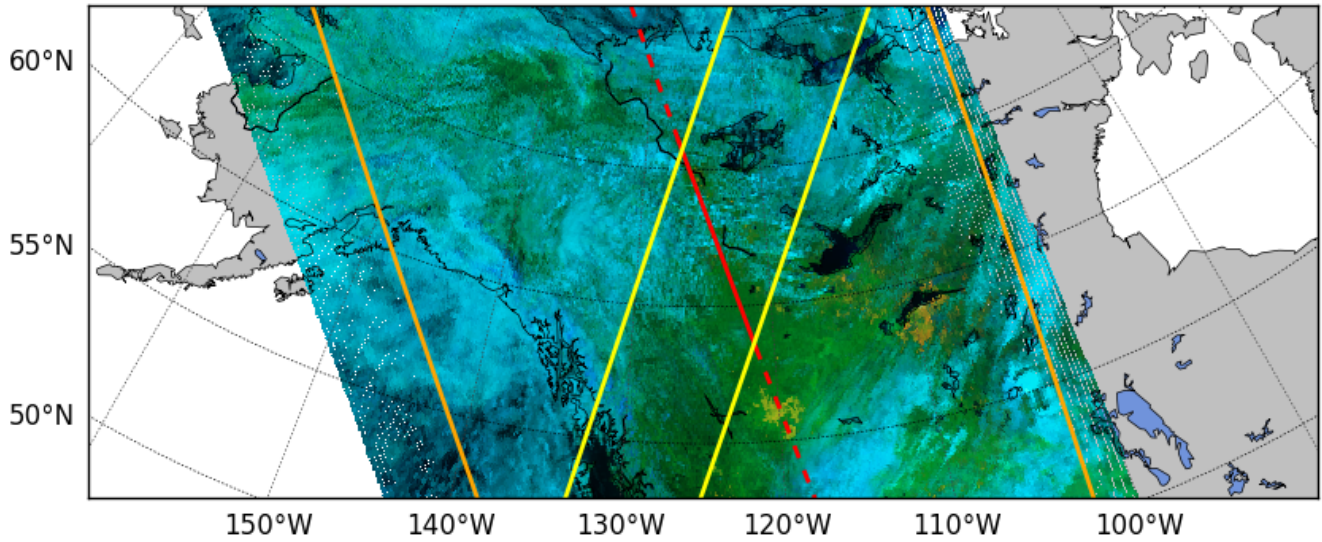


Figure 011. Study area NA2 (North America 2). As Figure 09, but at 07/22/2008, 20:58 LST.

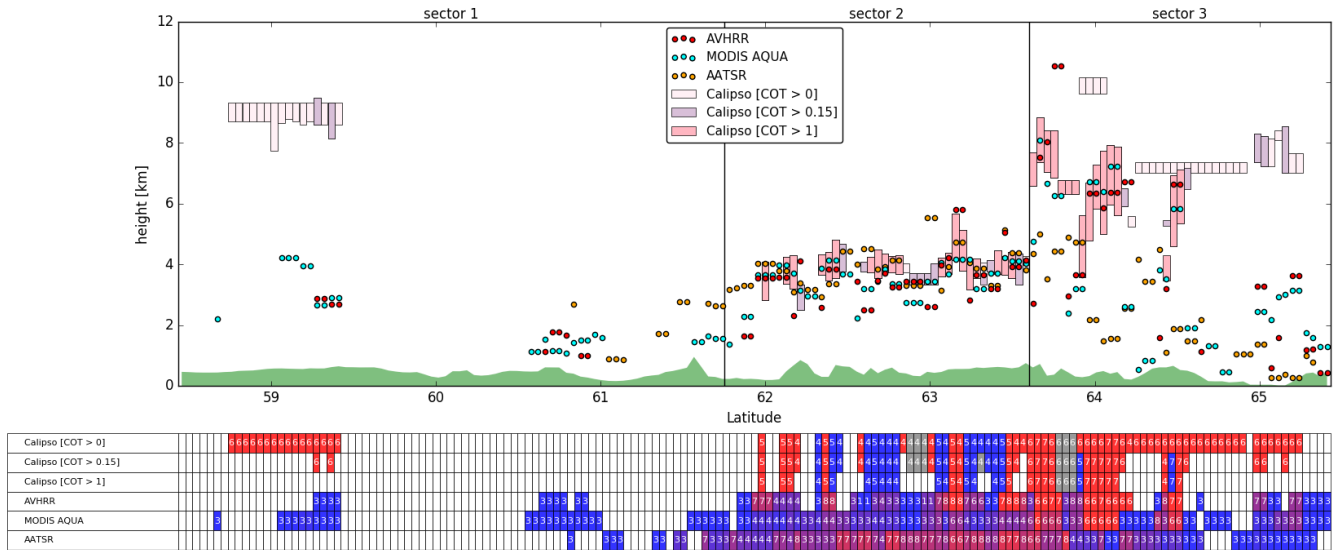


Figure 012. Study area NA2 (North America 2). As Figure 010, but at 07/22/2008, 20:58 LST (n = 163).

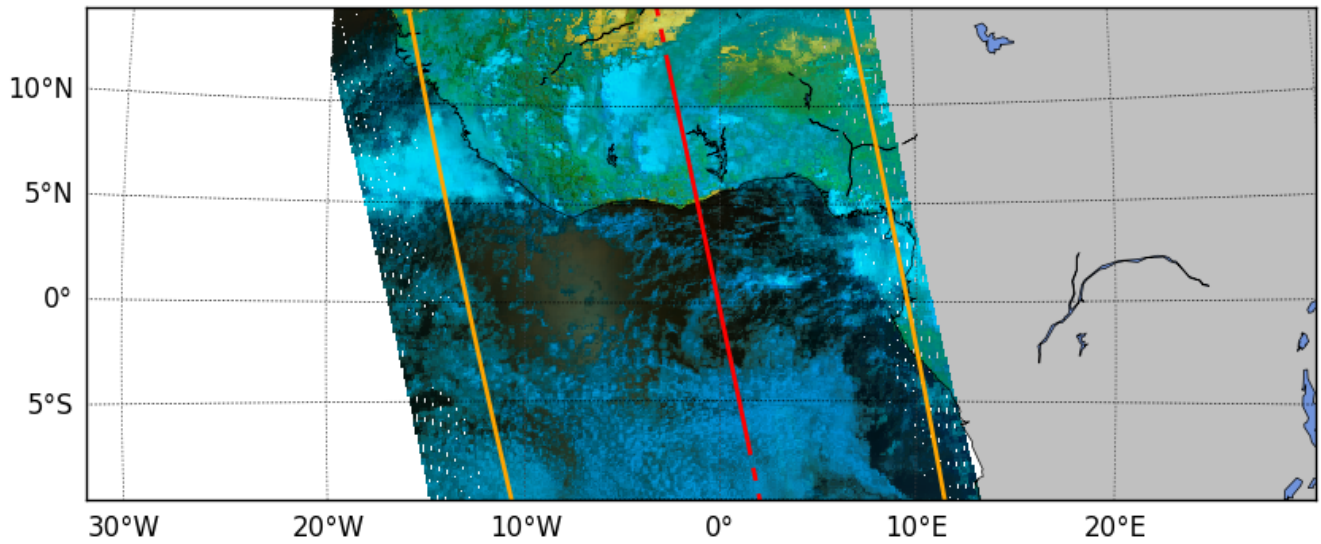
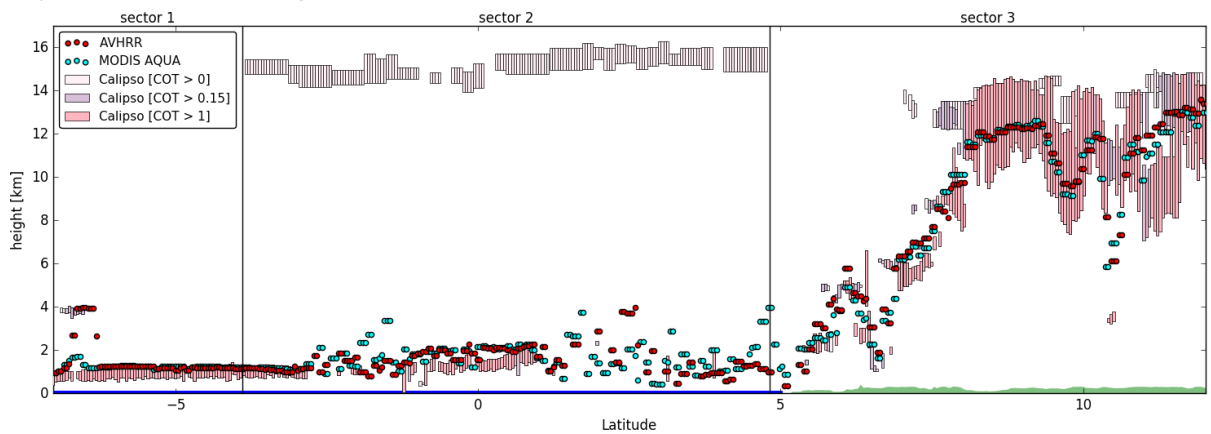


Figure 015. Study area AFR (Africa). As Figure 09, but at 10/24/2009, 13:45 LST.



Calipso [COT > 0]	
Calipso [COT > 0.15]	
Calipso [COT > 1]	
AVHRR	
MODIS AQUA	

Figure 016. Study area AFR (Africa). As Figure 010, but at 10/24/2009, 13:45 LST. Due to space restrictions, no cloud type values are shown in table. n = 1181

Table 01. The CC4CL AVHRR-heritage dataset channel characteristics for AVHRR, AATSR, and MODIS. Instrument noise as applied within CC4CL is in reflectance for CC4CL channels 1-3, and in brightness temperature [K] for channels 4-6.

	CC4CL sensor		channel width (μm)	noise
	ID	ID		
AVHRR	1	1	0.58 – 0.68	0.005
	2	2	0.725 – 1.10	0.005
	3	3a	1.58 – 1.64	0.005
	4	3b	3.55 – 3.93	0.25
	5	4	10.50 – 11.50	0.2
	6	5	11.5 – 12.5	0.2
MODIS	1	1	0.62 – 0.67	0.01
	2	2	0.841 – 0.876	0.01
	3	6	1.628 – 1.652	0.01
	4	20	3.66 – 3.84	0.2
	5	31	10.78 – 11.28	0.2
	6	32	11.77 – 12.27	0.2
AATSR	1	1	0.545 – 0.565	0.005
	2	2	0.649 – 0.669	0.005
	3	4	1.58 – 1.64	0.005
	4	5	3.51 – 3.89	0.25
	5	6	10.4 – 11.3	0.1
	6	7	11.5 – 12.5	0.1

Table 02. Threshold values applied to ANNCOD data for cloud mask classification.

day	night	twilight	land	sea	snow/ice	threshold
x			x			0.2
x			x		x	0.35
x				x		0.1
x				x	x	0.4
	x		x			0.3
	x		x		x	0.35
	x			x		0.2
	x			x	x	0.4
		x	x			0.3
		x	x		x	0.4
		x		x		0.35
		x		x	x	0.4

Table 03. Linear regression coefficients between collocated AVHRR and MODIS/AATSR channels.

CC4CL channel ID	sensor	regression coefficients
1	MODIS	$0.8945 \times \text{ch1} + 2.217$
	AATSR	$0.8542 \times \text{ch1}$
2	MODIS	$0.8336 \times \text{ch2} + 1.749$
	AATSR	$0.7787 \times \text{ch2}$
4	MODIS	$0.9944 \times \text{ch4} + 1.152$
	AATSR	$1.0626 \times \text{ch4} - 15.777$
5	MODIS	$0.9742 \times \text{ch5} + 7.205$
	AATSR	$0.9793 \times \text{ch5} + 5.366$
6	MODIS	$0.9676 \times \text{ch6} + 8.408$
	AATSR	$0.9838 \times \text{ch6} + 4.255$

Table 04. Cloud type classification for CC4CL and CALIOP.

ID	CC4CL	ID	CALIOP
0	clear	0	low transparent
1	switched to water	1	low opaque
2	fog	2	stratocumulus
3	water	3	low broken cumulus
4	supercooled	4	altocumulus
5	switched to ice	5	altostratus
6	opaque ice	6	cirrus
7	cirrus	7	deep convective
8	overlap	8	n/a

Table 05. CC4CL primary and secondary output. NN = neural network, SV = state vector, PP = postprocessed, PV = Pavolonis et al. (2005) algorithm, OE = optimal estimation.

variable name	abbrev.	unit	origin	description
primary variables				
cloud mask	cldmask	1	NN	Binary cloud occurrence classification
cloud type	cldtype	1	PV	Categorical cloud type classification
cloud phase	phflag	1	PV	cloud phase classification
cloud top pressure	ctp	hPa	SV	OE retrieval estimate of cloud top pressure
cloud top pressure unc.	ctp_unc	hPa	SV	OE retrieval unc. of cloud top pressure
cloud effective radius	cer	μm	SV	OE retrieval estimate of cloud effective radius
cloud effective radius unc.	cer_unc	μm	SV	OE retrieval unc. of cloud effective radius
cloud optical thickness	cot	1	SV	OE retrieval estimate of cloud optical thickness
cloud optical thickness unc.	cot_unc	1	SV	OE retrieval unc. of cloud optical thickness
surface temperature	stemp	kelvin	SV	OE retrieval estimate of surface temperature
surface temperature unc.	stemp_unc	kelvin	SV	OE retrieval unc. of surface temperature
secondary variables				
cloud mask unc.	cldmask_unc	1	PP	derived from NN output and threshold distance
cloud top height	cth	km	PP	derived from CTP and atmospheric profile
cloud top height unc.	cth_unc	km	PP	derived from retrieval unc. of CTP
cloud top temperature	ctt	kelvin	PP	derived from CTP and atmospheric profile
cloud top temperature unc.	ctt_unc	kelvin	PP	derived from retrieval unc. of CTP
cloud water path	cwp	g/m^2	PP	derived from CER and COT (Han et al., 1994)
cloud water path unc.	cwp_unc	g/m^2	PP	derived from retrieval unc. of CER and COT
cloud albedo at 0.06 μm	cla	1	PP	derived from CER and COT based on DISORT (Laszlo et al., 2016)
cloud albedo at 0.06 μm unc.	cla_unc	1	PP	derived from retrieval unc. of CER and COT
cloud albedo at 0.08 μm	cla	1	PP	derived from CER and COT based on DISORT (Laszlo et al., 2016)
cloud albedo at 0.08 μm unc.	cla_unc	1	PP	derived from retrieval unc. of CER and COT
cloud effective emissivity	cee	1	PP	derived from 10.8 and 12.0 μm data

Table 06. Statistics of CTP, COT, and CER retrieval values for study area NA2 and AVHRR (first value in each cell), MODIS (second value), and AATSR (third value). Δ values are given for AVHRR minus MODIS (first value in each cell), AVHRR minus AATSR (second value), and MODIS minus AATSR (third value). *t-Test p-value > 0.1 , indicating that differences in mean values are not significant.

	mean	median	stddev	skewness	kurtosis
CTP	667.2, 665.0, 645.2	667.8, 668.1, 632.4	147.5, 142.7, 146.2	-0.2, -0.2, 0.1	-0.4, -0.4, -0.8
Δ CTP	2.2*, 21.9, 19.7	4.2, 22.3, 18.5	63.0, 138.7, 138.9	-0.4, -0.3, -0.3	8.2, 1.0, 0.7
COT	12.3, 13.6, 13.4	7.2, 8.6, 8.8	19.8, 19.7, 17.6	6.6, 5.7, 5.3	60.5, 46.2, 40.8
Δ COT	-1.3, -1.2, 0.2*	-0.6, -1.2, -0.5	16.5, 22.0, 21.3	0.7, 2.4, 1.8	59.6, 41.5, 33.1
CER	21.1, 19.2, 21.3	16.5, 14.4, 18.1	13.0, 12.1, 10.9	1.1, 1.4, 0.6	1.4, 1.2, -0.8
Δ CER	1.9, -0.2*, -2.1	0.5, -1.0, -1.9	7.0, 11.6, 11.3	0.8, 0.8, 0.5	7.9, 4.4, 2.3

Table A1. ERA-Interim variables used within CC4CL. Variables marked with * are available at 0.1° spatial resolution, all others default to 0.72°.

variable name	abbrev.	ID	unit
profile variables			
Geopotential	Z	129	$\text{m}^2 \text{s}^{-2}$
Temperature	T	130	K
Specific humidity	Q	133	kg kg^{-1}
Log. surface pressure	LNSP	152	Pa
Ozone mass mixing ratio	O3	203	kg kg^{-1}
surface and single level variables			
Sea-ice cover*	CI	31	(0-1)
Snow albedo	ASN	32	(0-1)
Sea surface temperature	SSTK	34	K
Total column water vapour	TCWV	137	kg m^{-2}
Snow depth*	SD	141	m of water equivalent
10 metre U wind component	U10M	165	m s^{-1}
10 metre V wind component	V10M	166	m s^{-1}
2 metre temperature	T2M	167	K
Land/sea mask	LSM	172	(0,1)
Skin temperature*	SKT	235	K

Table A2. CC4CL L2 primary output variables. NN = neural network.

variable name	abbrev.	unit
latitude	lat	degree
longitude	lon	degree
solar zenith	solzen	degree
satellite zenith	satzen	degree
relative azimuth	relaz	degree
cloud top pressure	ctp	hPa
cloud top height	cth	kilometer
cloud top temperature	ctt	kelvin
cloud liquid water path	cwp	g/m ²
cloud effective radius	cer	μm
cloud optical thickness	cot	1
NN cloud optical thickness	cccot	1
cloud albedo	cla	1
cloud effective emissivity	cee	1
cloud fraction	cc_total	1
NN cloud mask	cldmask	(0,1)
cloud phase flag	phflag	1
Pavolonis cloud type	cldtype	1
retrieval convergence flag	conv	1
number of retrieval iterations	niter	1
a priori cost at solution	costja	1
measurement cost at solution	costjm	1
quality control flag	qcflag	1
land/sea flag	lsflag	(0,1)
snow/ice mask	siflag	(0,1)
illumination flag	ilflag	1
surface temperature	stemp	kelvin

Table A3. CC4CL L2 secondary output variables. NN = neural network.

variable name	abbrev.	unit
cloud optical thickness a priori	cot_ap	1
cloud optical thickness first guess	cot_fg	1
cloud effective radius a priori	cer_ap	μm
cloud effective radius first guess	cer_fg	μm
cloud top pressure a priori	ctp_ap	hPa
cloud top pressure first guess	ctp_fg	hPa
surface temperature a priori	stemp_ap	kelvin
surface temperature first guess	stemp_fg	kelvin
albedo in channel no X	alb_ch_X	1
reflectance in channel no X	ref_ch_X	1
brightness temperature in channel no X	bt_ch_X	kelvin
firstguess reflectance in channel no X	fg_ref_ch_X	1
firstguess brightness temperature in channel no X	fg_bt_ch_X	kelvin
reflectance residual in channel no X	ref_res_ch_X	1
brightness temperature residual in channel no X	bt_res_ch_X	kelvin
degrees of freedom signal	deg_free	1